

Data Path : Z:\VOASRV\HPCHEM1\MSVOA N\DATA\VN040620\  
 Data File : VN060851.D  
 Acq On : 6 Apr 2020 15:12  
 Operator : JC/MD  
 Sample : L2129-29  
 Misc : 5.00mL/MSVOA N/WATER  
 ALS Vial : 13 Sample Multiplier: 1

Instrument :  
 MSVOA\_N  
 ClientSampleId :  
 TP-2

Quant Time: Apr 07 08:10:42 2020  
 Quant Method : Z:\VOASRV\HPCHEM1\MSVOA\_N\METHODS\82N031820W.M  
 Quant Title : SW846 8260  
 QLast Update : Wed Mar 18 08:49:09 2020  
 Response via : Initial Calibration

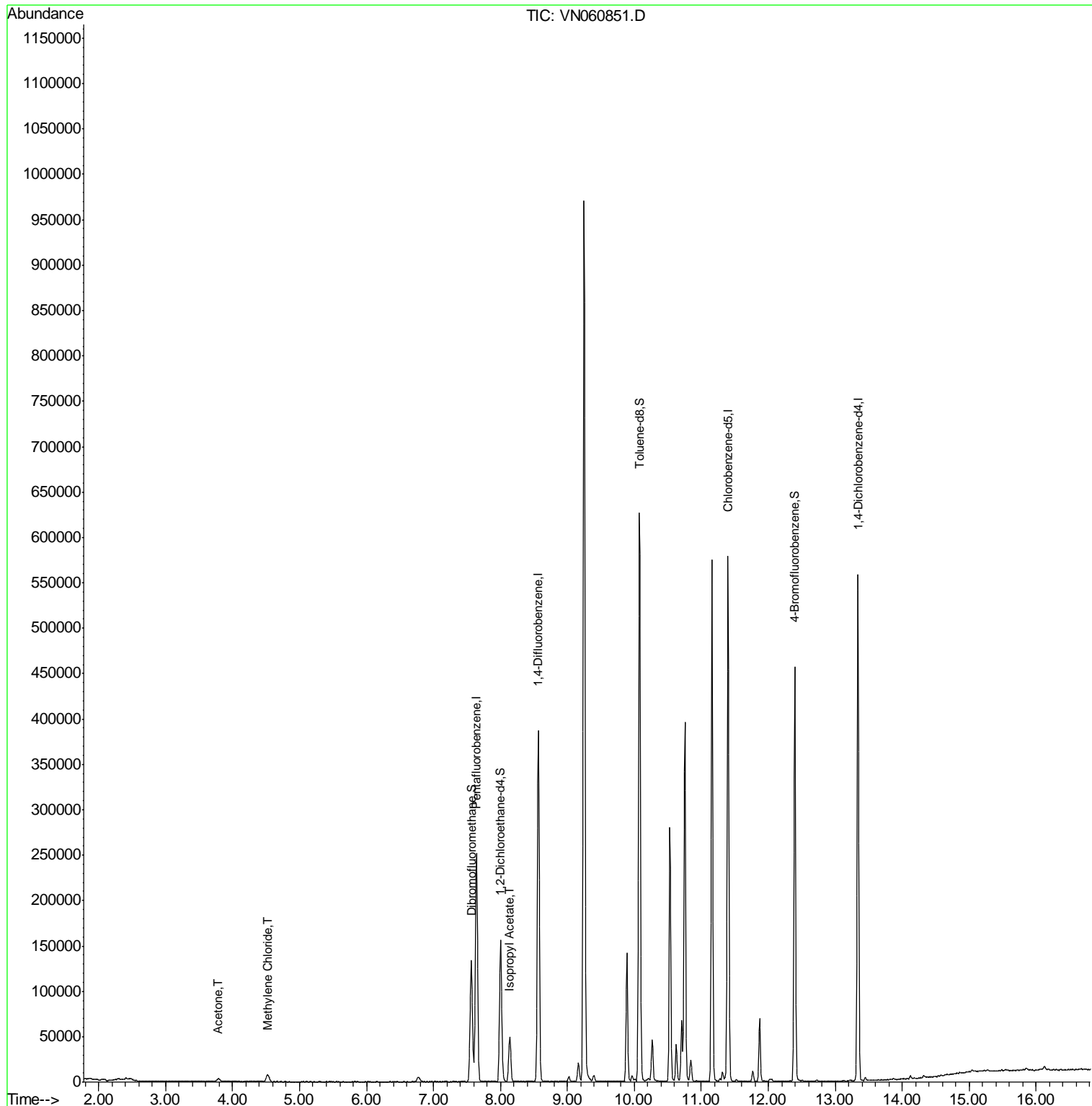
Internal Standards	R.T.	QIon	Response	Conc	Units	Dev(Min)
1) Pentafluorobenzene	7.64	168	205973	50.00	ug/l	0.00
34) 1,4-Difluorobenzene	8.57	114	343526	50.00	ug/l	0.00
63) Chlorobenzene-d5	11.40	117	328659	50.00	ug/l	0.00
72) 1,4-Dichlorobenzene-d4	13.34	152	147564	50.00	ug/l	0.00
System Monitoring Compounds						
33) 1,2-Dichloroethane-d4	8.00	65	134046	47.41	ug/l	0.00
Spiked Amount	50.000		Recovery	=	94.82%	
35) Dibromofluoromethane	7.56	113	103497	49.83	ug/l	0.00
Spiked Amount	50.000		Recovery	=	99.66%	
50) Toluene-d8	10.08	98	429863	50.66	ug/l	0.00
Spiked Amount	50.000		Recovery	=	101.32%	
62) 4-Bromofluorobenzene	12.40	95	160015	51.46	ug/l	0.00
Spiked Amount	50.000		Recovery	=	102.92%	
Target Compounds						
16) Acetone	3.79	43	6481	6.471	ug/l	97
20) Methylene Chloride	4.52	84	6185	2.510	ug/l	100
43) Isopropyl Acetate	8.14	43	61340	10.348	ug/l #	89

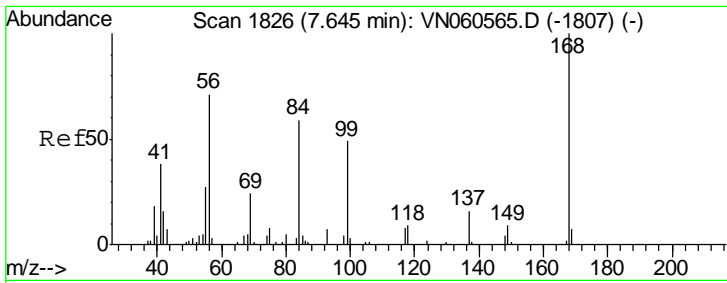
(#) = qualifier out of range (m) = manual integration (+) = signals summed

Data Path : Z:\VOASRV\HPCHEM1\MSVOA N\DATA\VN040620\  
 Data File : VN060851.D  
 Acq On : 6 Apr 2020 15:12  
 Operator : JC/MD  
 Sample : L2129-29  
 Misc : 5.00mL/MSVOA N/WATER  
 ALS Vial : 13 Sample Multiplier: 1

Instrument :  
 MSVOA\_N  
 ClientSampled :  
 TP-2

Quant Time: Apr 07 08:10:42 2020  
 Quant Method : Z:\VOASRV\HPCHEM1\MSVOA\_N\METHODS\82N031820W.M  
 Quant Title : SW846 8260  
 QLast Update : Wed Mar 18 08:49:09 2020  
 Response via : Initial Calibration

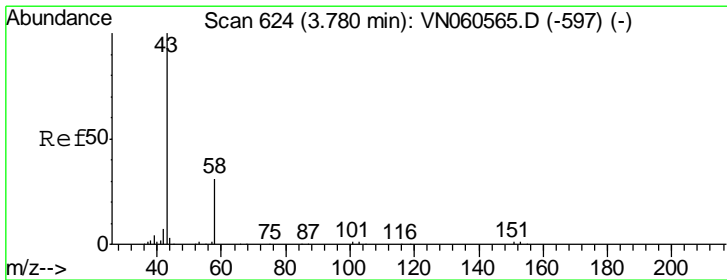
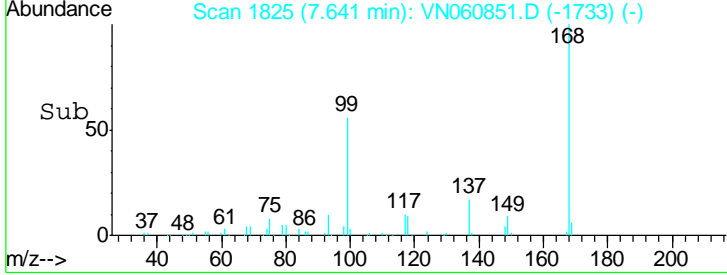
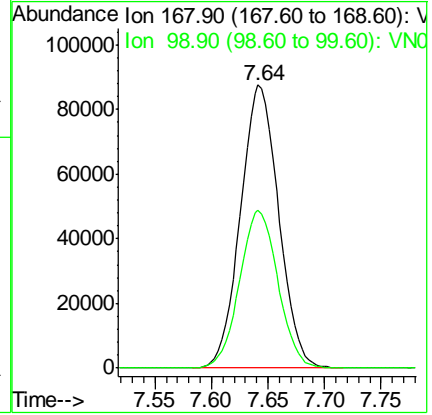
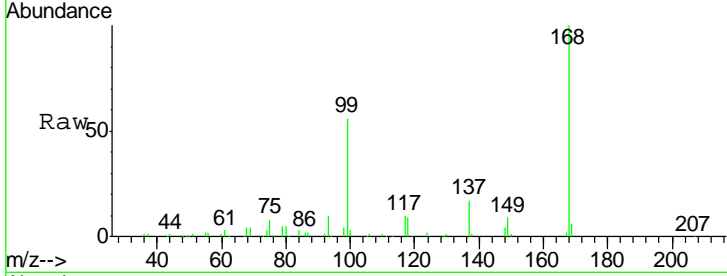




#1  
 Pentafluorobenzene  
 Concen: 50.000 ug/l  
 RT: 7.64 min Scan# 1825  
 Delta R.T. -0.00 min  
 Lab File: VN060851.D  
 Acq: 6 Apr 2020 15:12

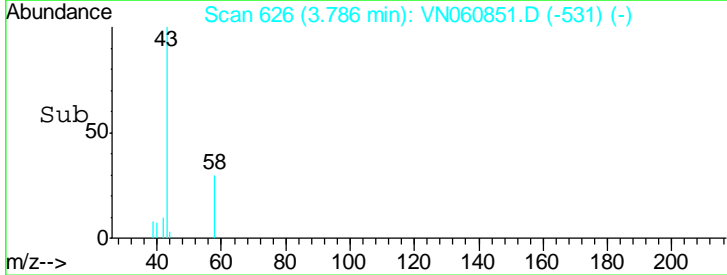
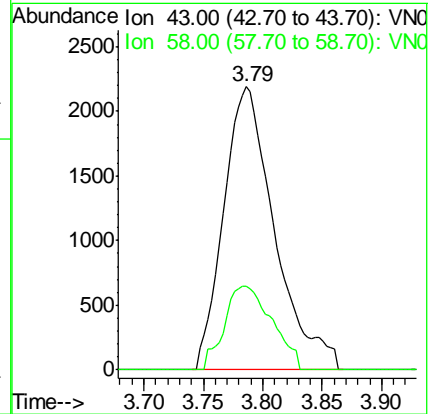
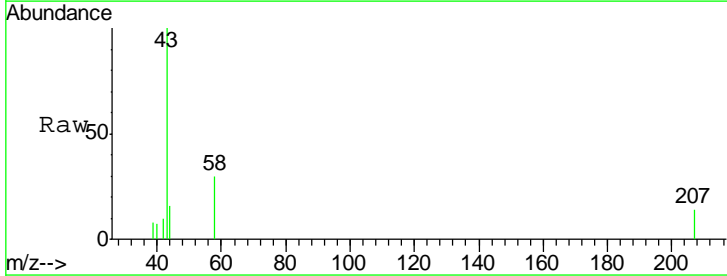
Instrument :  
 MSVOA\_N  
 ClientSampled :  
 TP-2

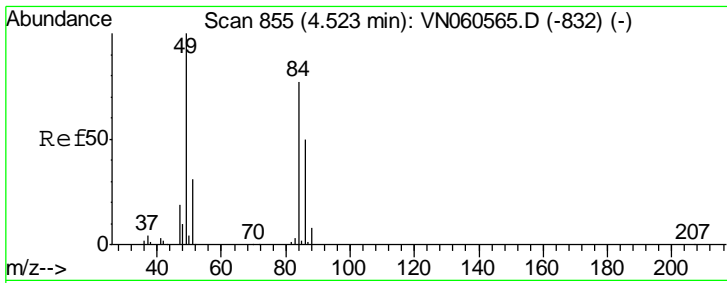
Tgt Ion	Resp	Lower	Upper
168	100		
99	56.0	44.0	66.0



#16  
 Acetone  
 Concen: 6.471 ug/l  
 RT: 3.79 min Scan# 626  
 Delta R.T. 0.01 min  
 Lab File: VN060851.D  
 Acq: 6 Apr 2020 15:12

Tgt Ion	Resp	Lower	Upper
43	100		
58	29.6	25.1	37.7

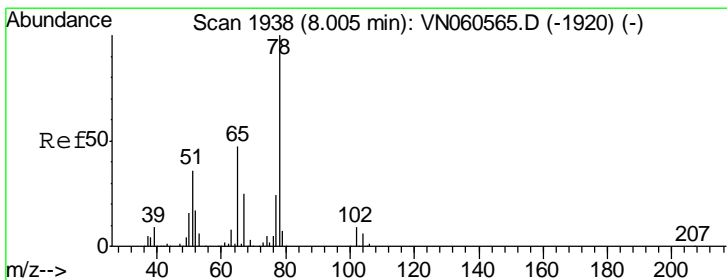
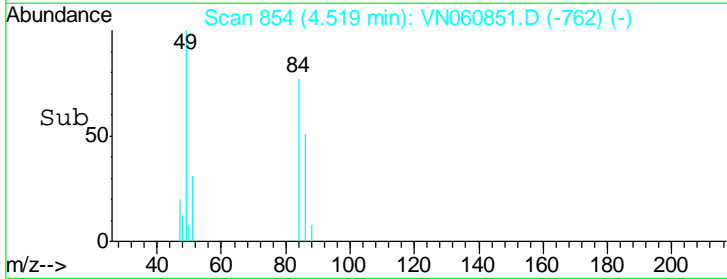
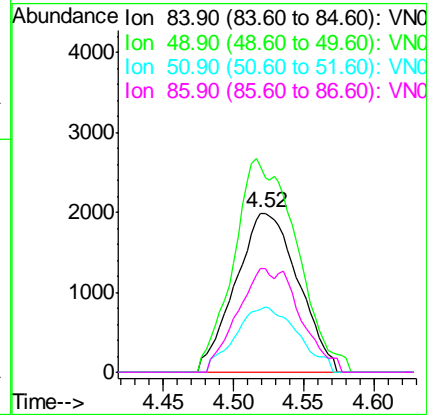
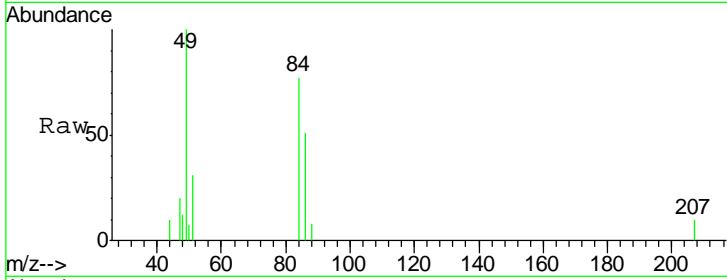




#20  
 Methylene Chloride  
 Concen: 2.510 ug/l  
 RT: 4.52 min Scan# 854  
 Delta R.T. -0.00 min  
 Lab File: VN060851.D  
 Acq: 6 Apr 2020 15:12

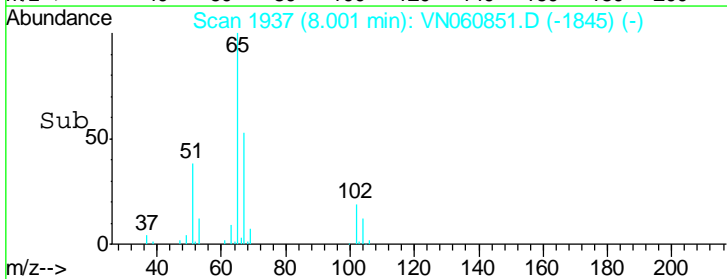
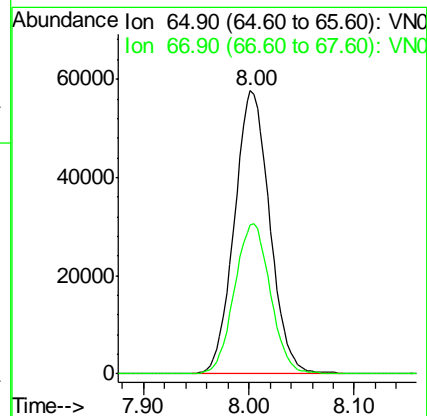
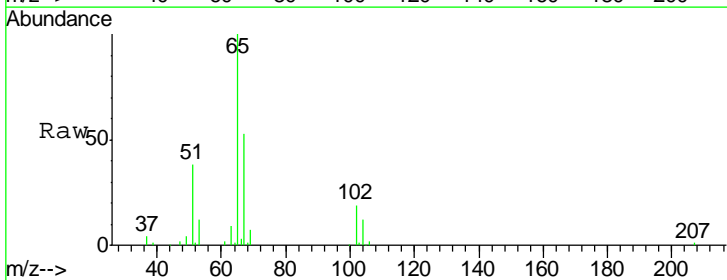
Instrument :  
 MSVOA\_N  
 ClientSampled :  
 TP-2

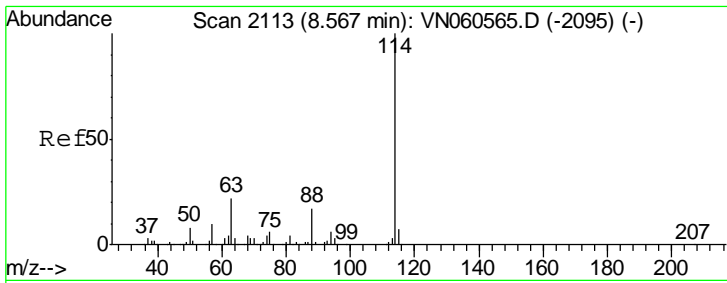
Tgt Ion	Resp	Lower	Upper
84	6185		
49	129.5	103.3	154.9
51	39.5	31.6	47.4
86	65.5	52.0	78.0



#33  
 1,2-Dichloroethane-d4  
 Concen: 47.407 ug/l  
 RT: 8.00 min Scan# 1937  
 Delta R.T. -0.00 min  
 Lab File: VN060851.D  
 Acq: 6 Apr 2020 15:12

Tgt Ion	Resp	Lower	Upper
65	134046		
67	53.9	0.0	107.6

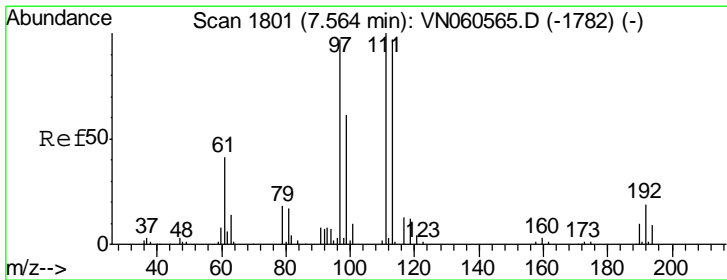
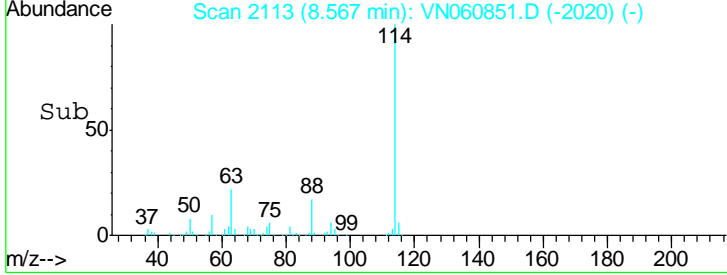
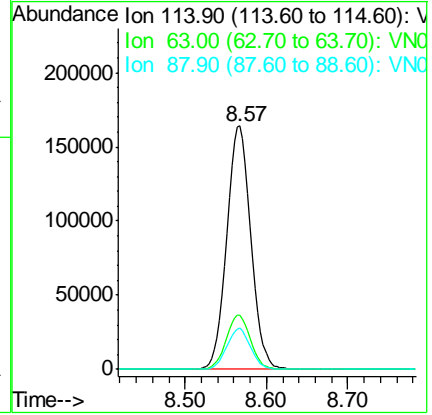
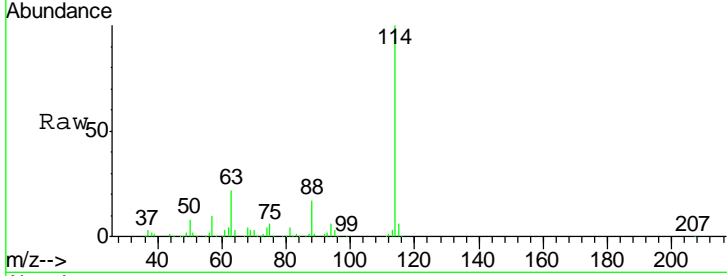




#34  
 1,4-Difluorobenzene  
 Concen: 50.000 ug/l  
 RT: 8.57 min Scan# 2113  
 Delta R.T. -0.00 min  
 Lab File: VN060851.D  
 Acq: 6 Apr 2020 15:12

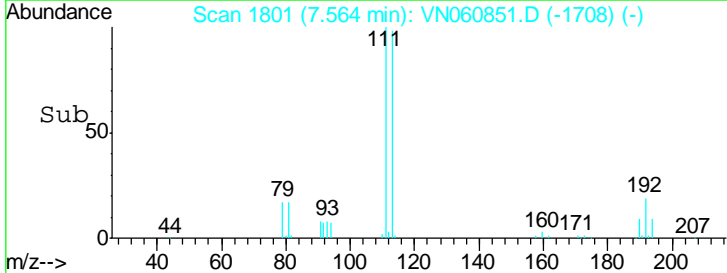
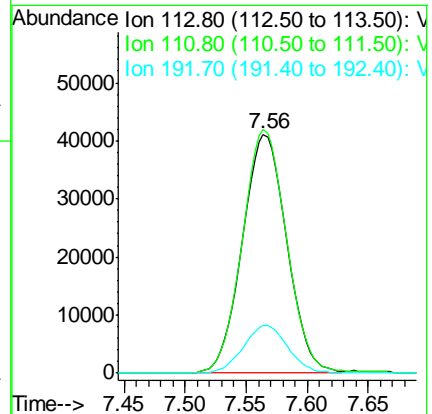
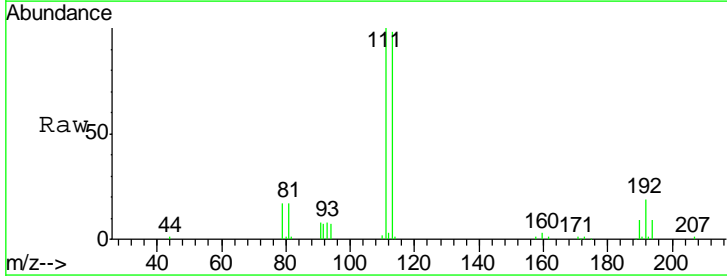
Instrument :  
 MSVOA\_N  
 ClientSampled :  
 TP-2

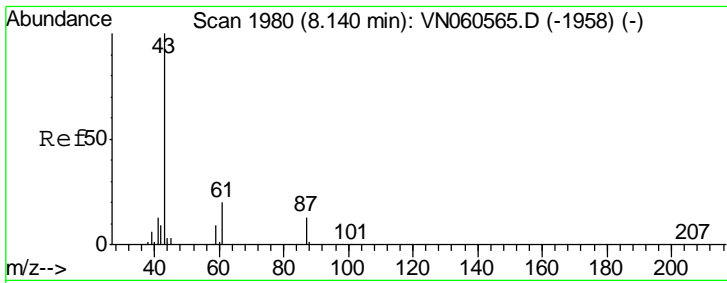
Tgt Ion	Resp	Lower	Upper
114	100		
63	22.3	0.0	43.8
88	16.8	0.0	33.0



#35  
 Dibromofluoromethane  
 Concen: 49.825 ug/l  
 RT: 7.56 min Scan# 1801  
 Delta R.T. -0.00 min  
 Lab File: VN060851.D  
 Acq: 6 Apr 2020 15:12

Tgt Ion	Resp	Lower	Upper
113	100		
111	102.2	82.9	124.3
192	19.9	15.8	23.8

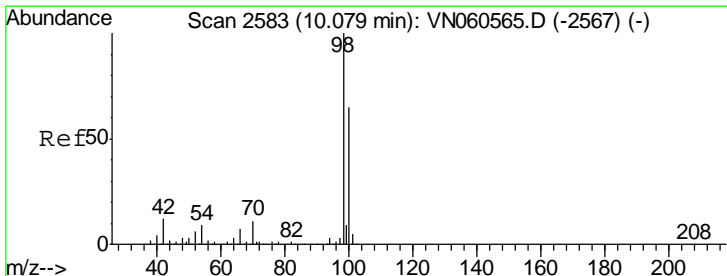
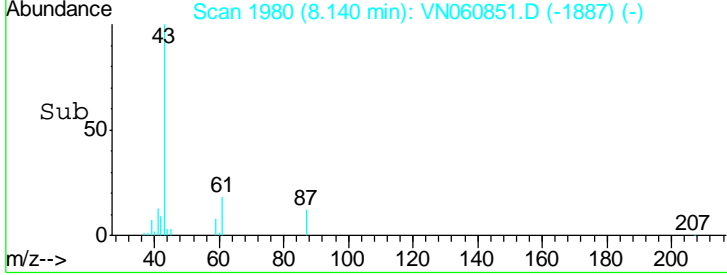
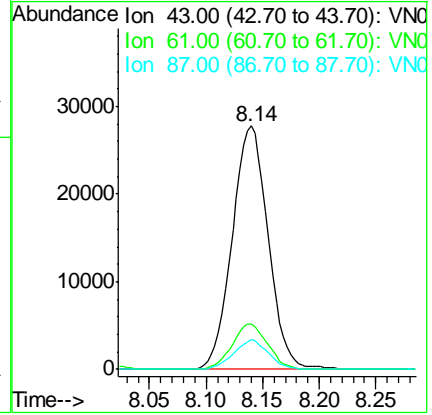
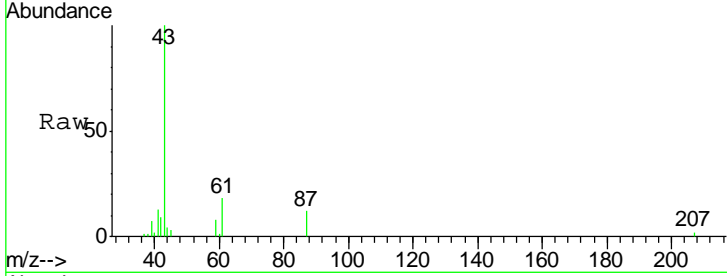




#43  
 Isopropyl Acetate  
 Concen: 10.348 ug/l  
 RT: 8.14 min Scan# 1980  
 Delta R.T. -0.00 min  
 Lab File: VN060851.D  
 Acq: 6 Apr 2020 15:12

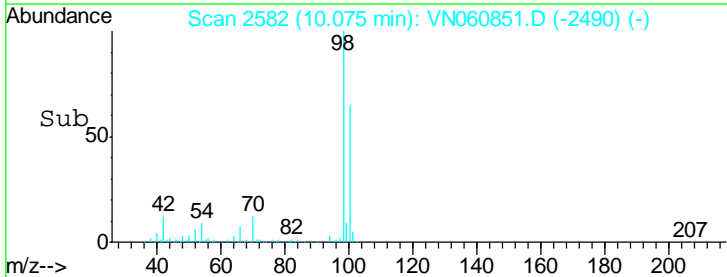
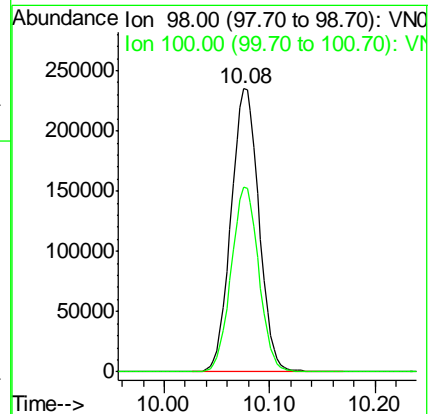
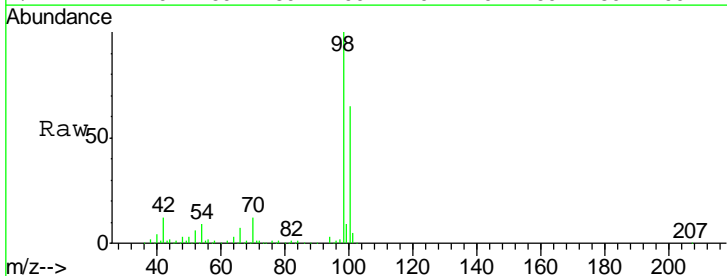
Instrument : MSVOA\_N  
 ClientSampled : TP-2

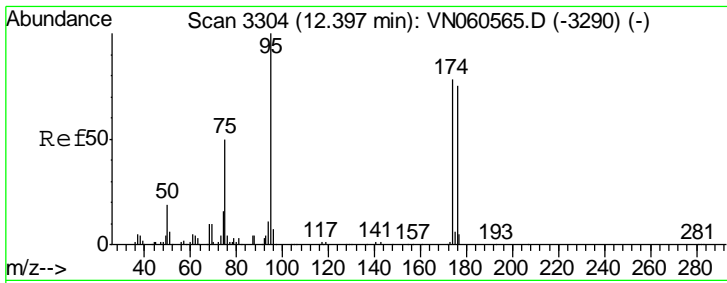
Tgt Ion	Resp	Lower	Upper
43	100		
61	18.2	20.7	31.1#
87	11.7	9.8	14.8



#50  
 Toluene-d8  
 Concen: 50.664 ug/l  
 RT: 10.08 min Scan# 2582  
 Delta R.T. -0.00 min  
 Lab File: VN060851.D  
 Acq: 6 Apr 2020 15:12

Tgt Ion	Resp	Lower	Upper
98	100		
100	64.6	51.8	77.8

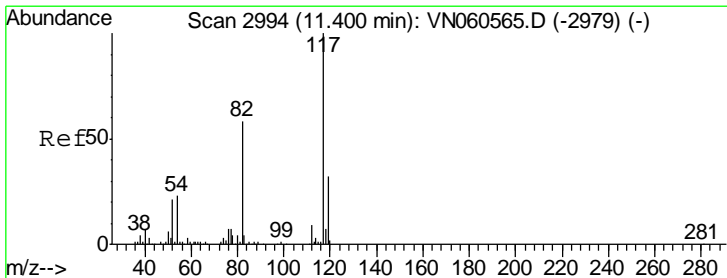
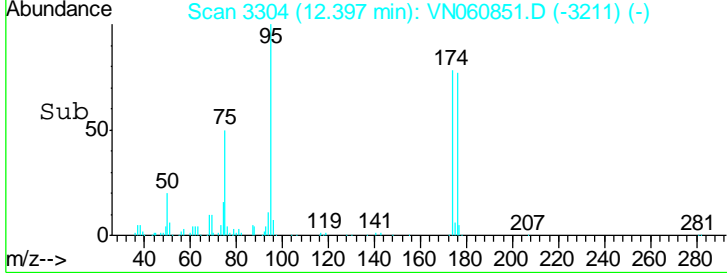
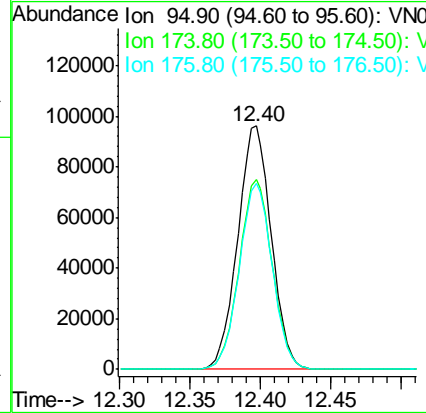
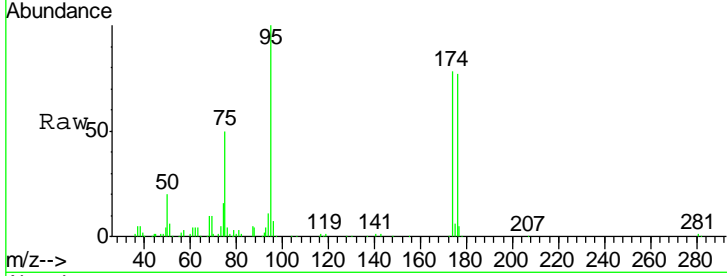




#62  
 4-Bromofluorobenzene  
 Concen: 51.461 ug/l  
 RT: 12.40 min Scan# 3304  
 Delta R.T. -0.00 min  
 Lab File: VN060851.D  
 Acq: 6 Apr 2020 15:12

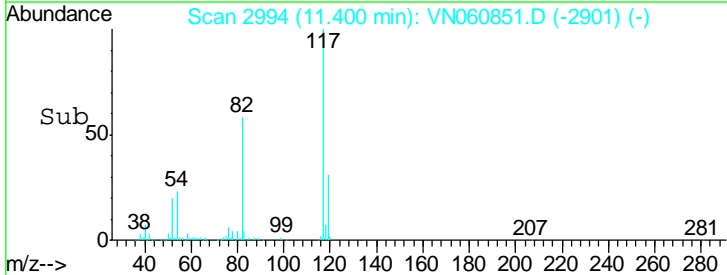
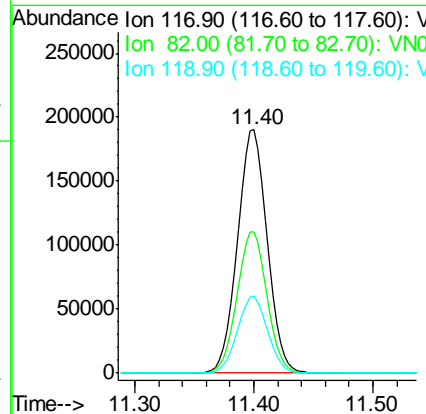
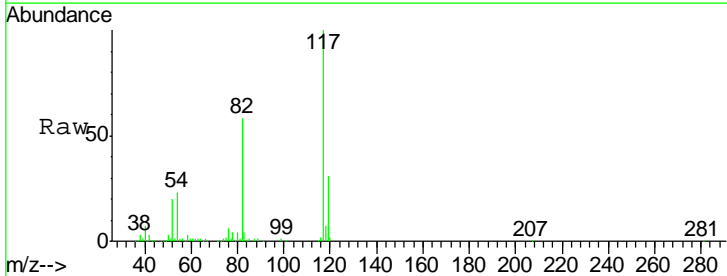
Instrument :  
 MSVOA\_N  
 ClientSampled :  
 TP-2

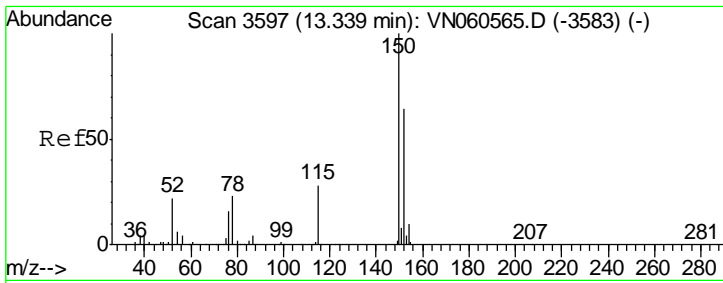
Tgt Ion	Resp	Lower	Upper
95	160015		
174	77.1	0.0	157.6
176	75.3	0.0	150.6



#63  
 Chlorobenzene-d5  
 Concen: 50.000 ug/l  
 RT: 11.40 min Scan# 2994  
 Delta R.T. -0.00 min  
 Lab File: VN060851.D  
 Acq: 6 Apr 2020 15:12

Tgt Ion	Resp	Lower	Upper
117	328659		
82	58.1	46.7	70.1
119	31.5	25.5	38.3





#72  
 1,4-Dichlorobenzene-d4  
 Concen: 50.000 ug/l  
 RT: 13.34 min Scan# 3597  
 Delta R.T. -0.00 min  
 Lab File: VN060851.D  
 Acq: 6 Apr 2020 15:12

Instrument :  
 MSVOA\_N  
 ClientSampled :  
 TP-2

Tot Ion:152 Resp: 147564

Ion	Ratio	Lower	Upper
152	100		
115	60.1	30.2	90.6
150	158.0	0.0	350.2

