

Data Path : Z:\VOASRV\HPCHEM1\MSVOA N\DATA\VN040620\  
 Data File : VN060852.D  
 Acq On : 6 Apr 2020 15:35  
 Operator : JC/MD  
 Sample : L2129-34  
 Misc : 5.00mL/MSVOA N/WATER  
 ALS Vial : 14 Sample Multiplier: 1

Instrument :  
 MSVOA\_N  
 ClientSampleId :  
 TP-5

Quant Time: Apr 07 08:12:34 2020  
 Quant Method : Z:\VOASRV\HPCHEM1\MSVOA\_N\METHODS\82N031820W.M  
 Quant Title : SW846 8260  
 QLast Update : Wed Mar 18 08:49:09 2020  
 Response via : Initial Calibration

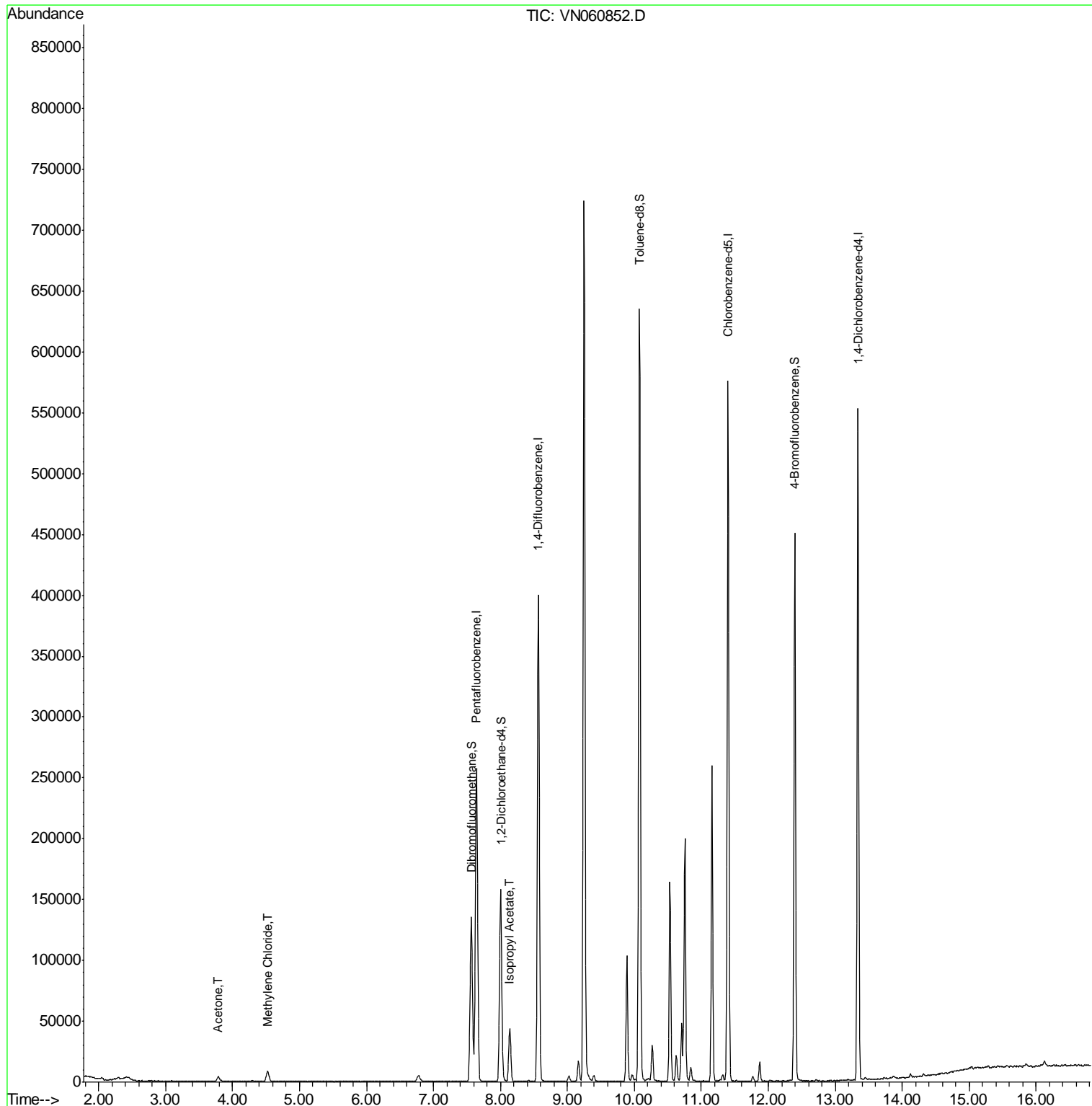
Internal Standards	R.T.	QIon	Response	Conc	Units	Dev(Min)
1) Pentafluorobenzene	7.64	168	213349	50.00	ug/l	0.00
34) 1,4-Difluorobenzene	8.57	114	354088	50.00	ug/l	0.00
63) Chlorobenzene-d5	11.40	117	331100	50.00	ug/l	0.00
72) 1,4-Dichlorobenzene-d4	13.34	152	147929	50.00	ug/l	0.00
System Monitoring Compounds						
33) 1,2-Dichloroethane-d4	8.00	65	134899	46.06	ug/l	0.00
Spiked Amount	50.000		Recovery	=	92.12%	
35) Dibromofluoromethane	7.56	113	105512	49.28	ug/l	0.00
Spiked Amount	50.000		Recovery	=	98.56%	
50) Toluene-d8	10.08	98	437398	50.01	ug/l	0.00
Spiked Amount	50.000		Recovery	=	100.02%	
62) 4-Bromofluorobenzene	12.40	95	161174	50.29	ug/l	0.00
Spiked Amount	50.000		Recovery	=	100.58%	
Target Compounds						
16) Acetone	3.79	43	7355	7.090	ug/l	100
20) Methylene Chloride	4.53	84	6412	2.512	ug/l	91
43) Isopropyl Acetate	8.14	43	53330	8.729	ug/l #	91

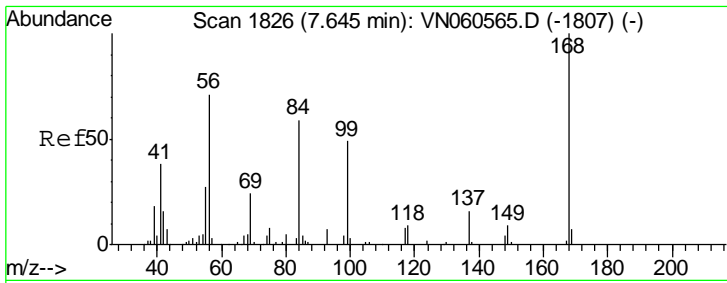
(#) = qualifier out of range (m) = manual integration (+) = signals summed

Data Path : Z:\VOASRV\HPCHEM1\MSVOA N\DATA\VN040620\  
 Data File : VN060852.D  
 Acq On : 6 Apr 2020 15:35  
 Operator : JC/MD  
 Sample : L2129-34  
 Misc : 5.00mL/MSVOA N/WATER  
 ALS Vial : 14 Sample Multiplier: 1

Instrument :  
 MSVOA\_N  
 ClientSampleId :  
 TP-5

Quant Time: Apr 07 08:12:34 2020  
 Quant Method : Z:\VOASRV\HPCHEM1\MSVOA\_N\METHODS\82N031820W.M  
 Quant Title : SW846 8260  
 QLast Update : Wed Mar 18 08:49:09 2020  
 Response via : Initial Calibration

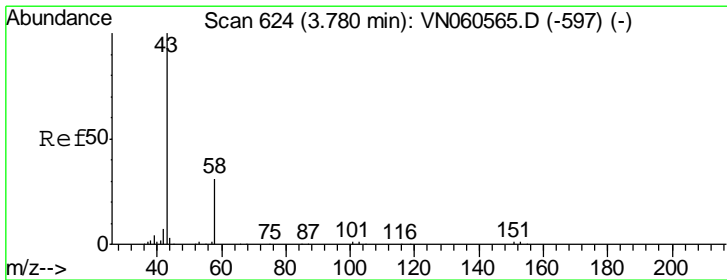
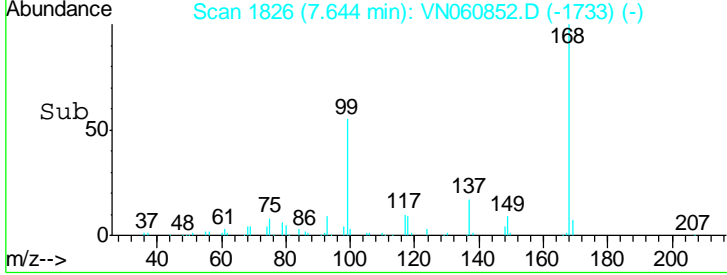
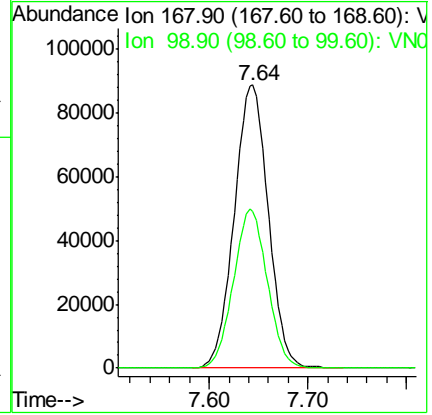
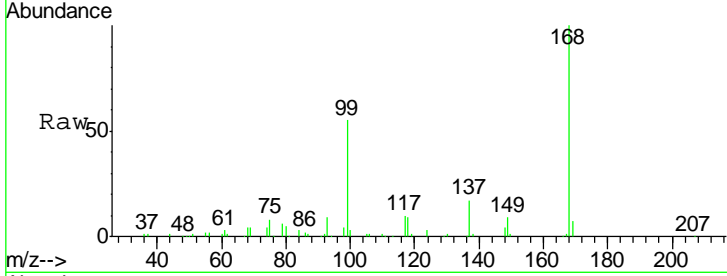




#1  
 Pentafluorobenzene  
 Concen: 50.000 ug/l  
 RT: 7.64 min Scan# 1826  
 Delta R.T. -0.00 min  
 Lab File: VN060852.D  
 Acq: 6 Apr 2020 15:35

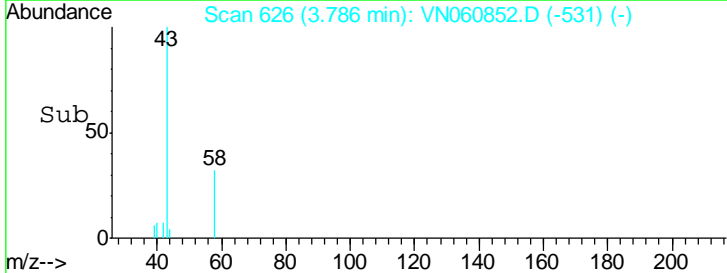
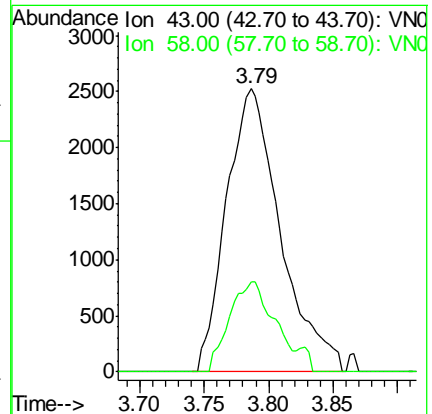
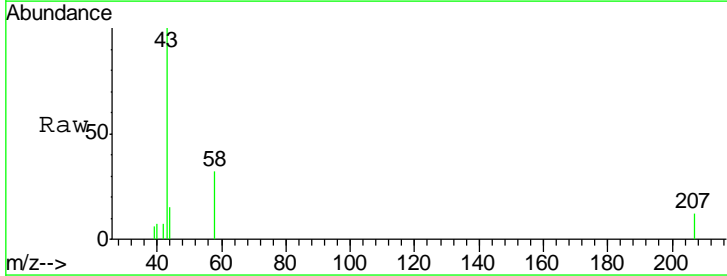
Instrument :  
 MSVOA\_N  
 ClientSampled :  
 TP-5

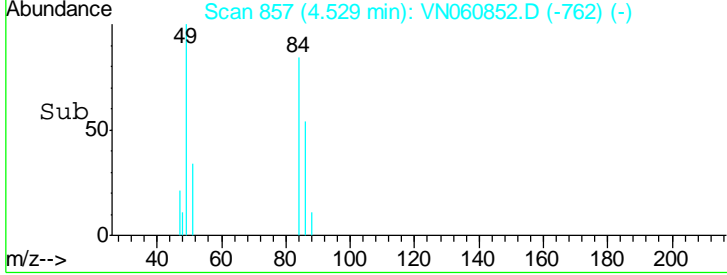
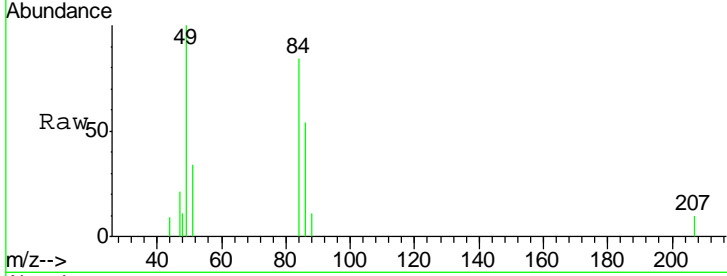
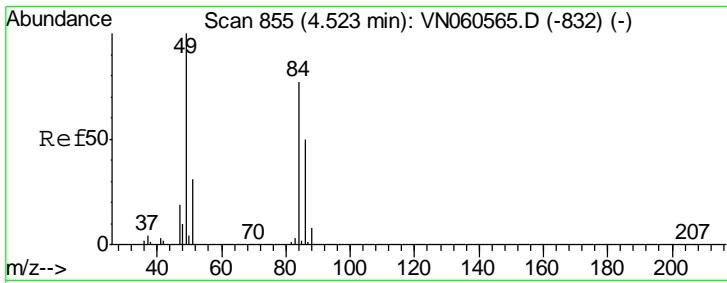
Tgt Ion	Resp	Lower	Upper
168	100		
99	55.3	44.0	66.0



#16  
 Acetone  
 Concen: 7.090 ug/l  
 RT: 3.79 min Scan# 626  
 Delta R.T. 0.01 min  
 Lab File: VN060852.D  
 Acq: 6 Apr 2020 15:35

Tgt Ion	Resp	Lower	Upper
43	100		
58	31.6	25.1	37.7

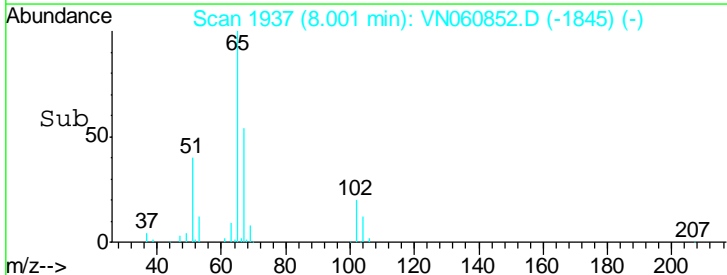
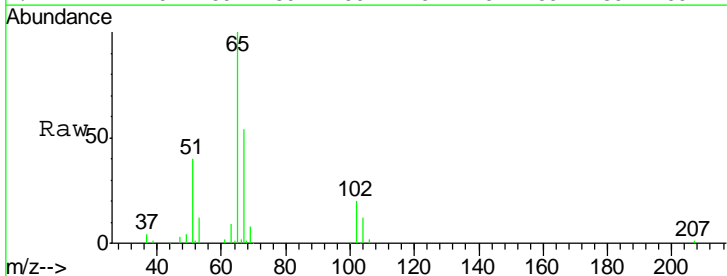
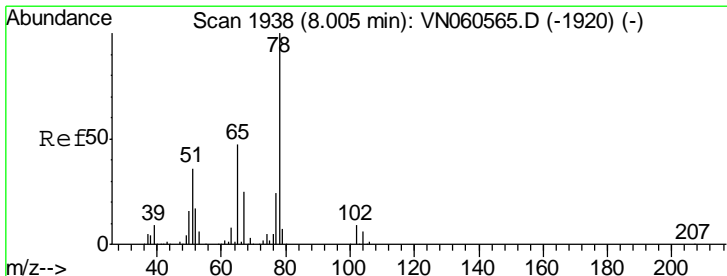
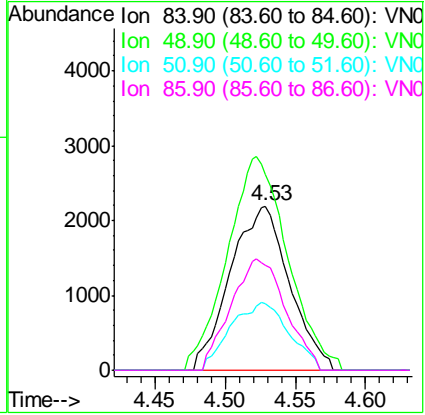




#20  
 Methylene Chloride  
 Concen: 2.512 ug/l  
 RT: 4.53 min Scan# 857  
 Delta R.T. 0.01 min  
 Lab File: VN060852.D  
 Acq: 6 Apr 2020 15:35

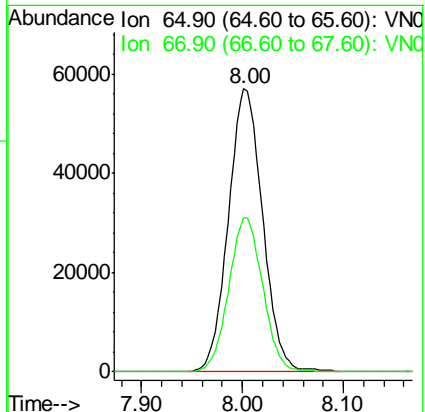
Instrument : MSVOA\_N  
 ClientSampled : TP-5

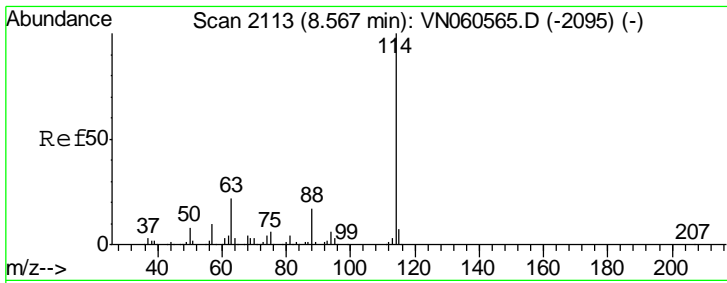
Tgt Ion	Resp	Lower	Upper
84	6412		
49	111.8	103.3	154.9
51	40.8	31.6	47.4
86	63.8	52.0	78.0



#33  
 1,2-Dichloroethane-d4  
 Concen: 46.060 ug/l  
 RT: 8.00 min Scan# 1937  
 Delta R.T. -0.00 min  
 Lab File: VN060852.D  
 Acq: 6 Apr 2020 15:35

Tgt Ion	Resp	Lower	Upper
65	134899		
67	54.0	0.0	107.6

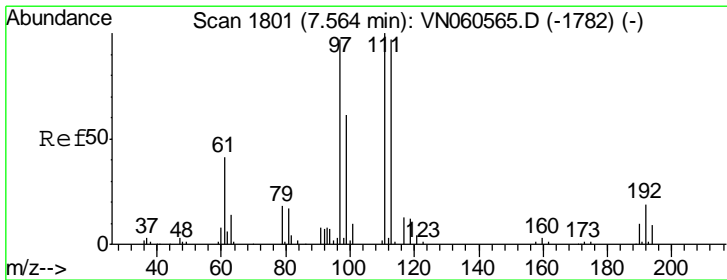
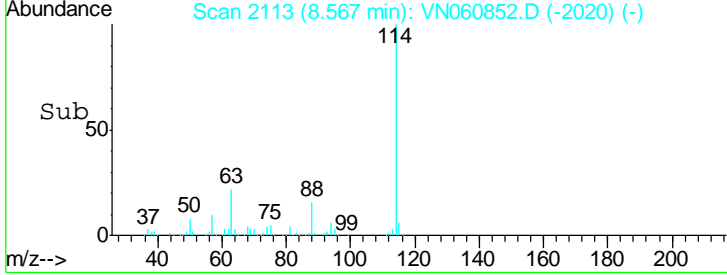
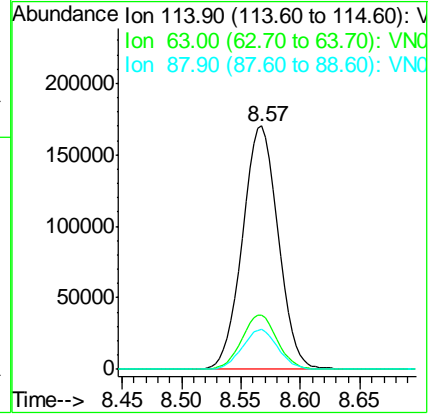
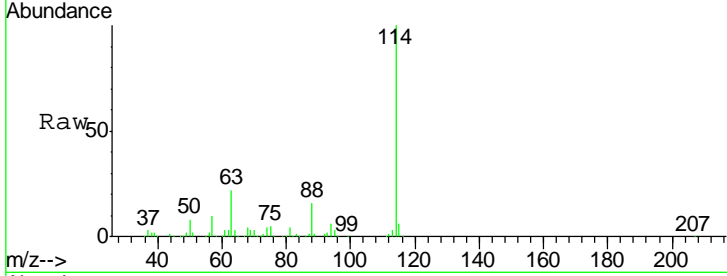




#34  
 1,4-Difluorobenzene  
 Concen: 50.000 ug/l  
 RT: 8.57 min Scan# 2113  
 Delta R.T. -0.00 min  
 Lab File: VN060852.D  
 Acq: 6 Apr 2020 15:35

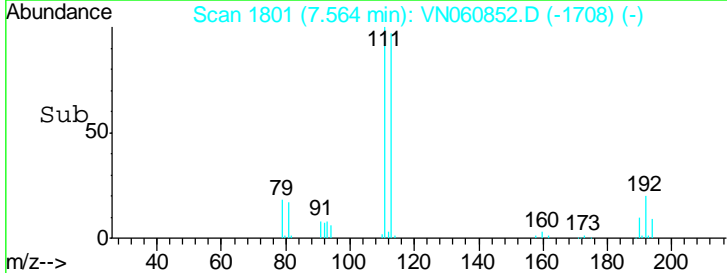
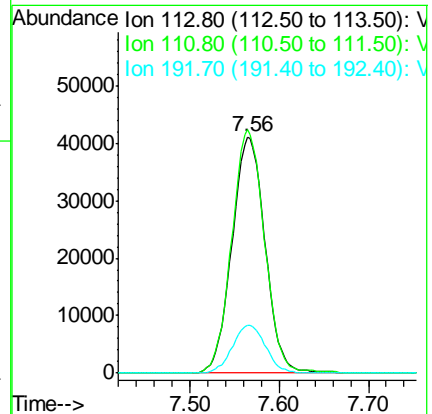
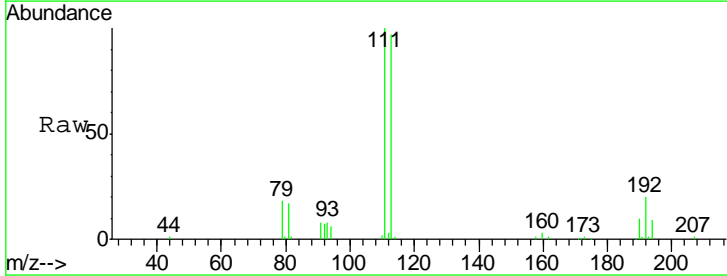
Instrument :  
 MSVOA\_N  
 ClientSampled :  
 TP-5

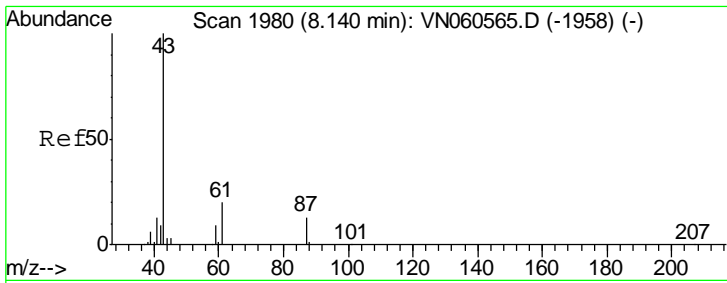
Tgt Ion	Resp	Lower	Upper
114	100		
63	22.3	0.0	43.8
88	16.2	0.0	33.0



#35  
 Dibromofluoromethane  
 Concen: 49.280 ug/l  
 RT: 7.56 min Scan# 1801  
 Delta R.T. -0.00 min  
 Lab File: VN060852.D  
 Acq: 6 Apr 2020 15:35

Tgt Ion	Resp	Lower	Upper
113	100		
111	102.1	82.9	124.3
192	20.2	15.8	23.8

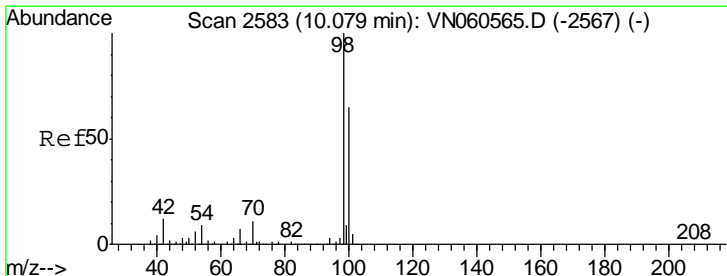
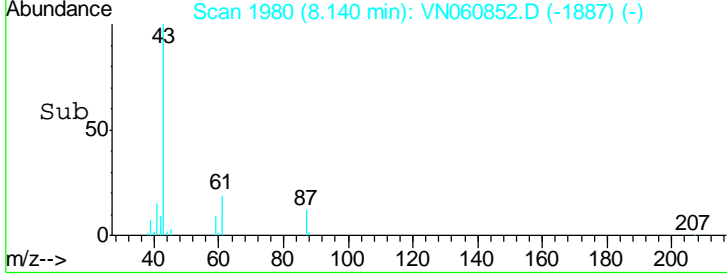
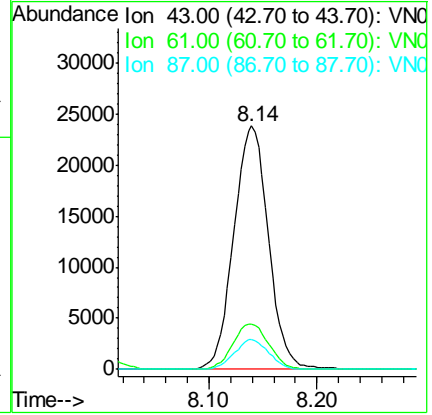
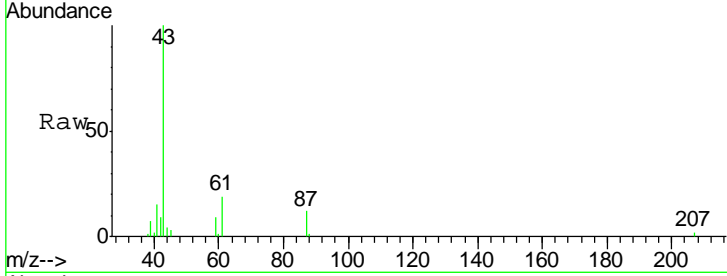




#43  
 Isopropyl Acetate  
 Concen: 8.729 ug/l  
 RT: 8.14 min Scan# 1980  
 Delta R.T. -0.00 min  
 Lab File: VN060852.D  
 Acq: 6 Apr 2020 15:35

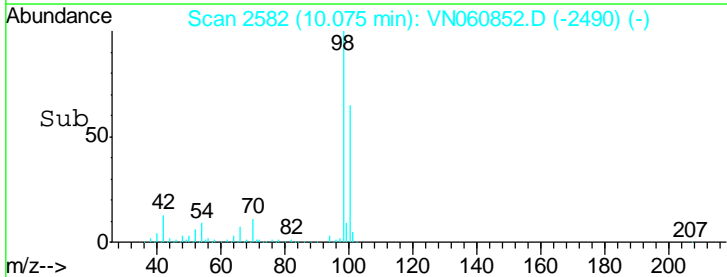
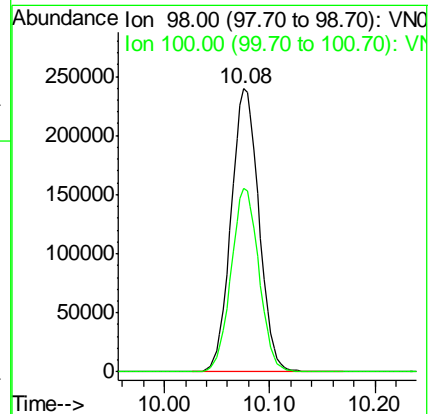
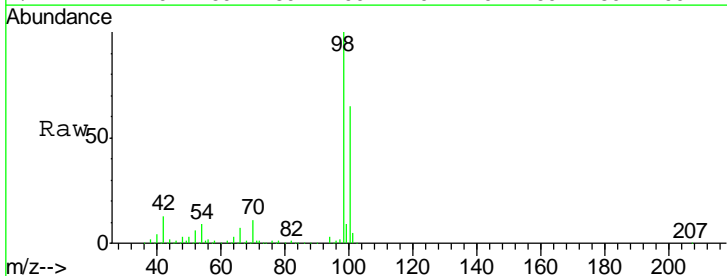
Instrument : MSVOA\_N  
 ClientSampled : TP-5

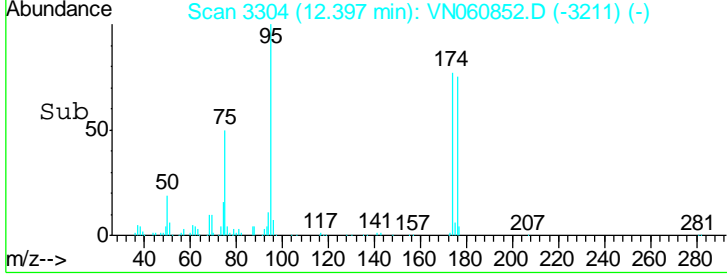
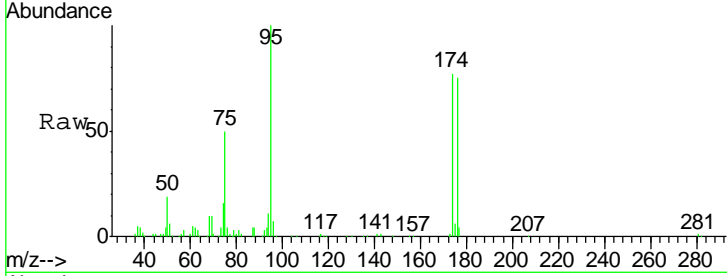
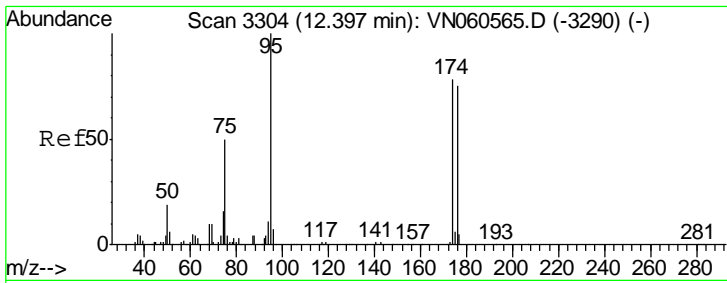
Tgt Ion	Resp	Lower	Upper
43	100		
61	19.2	20.7	31.1#
87	11.9	9.8	14.8



#50  
 Toluene-d8  
 Concen: 50.015 ug/l  
 RT: 10.08 min Scan# 2582  
 Delta R.T. -0.00 min  
 Lab File: VN060852.D  
 Acq: 6 Apr 2020 15:35

Tgt Ion	Resp	Lower	Upper
98	100		
100	64.6	51.8	77.8

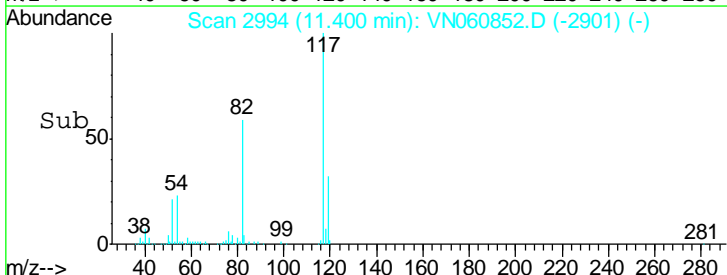
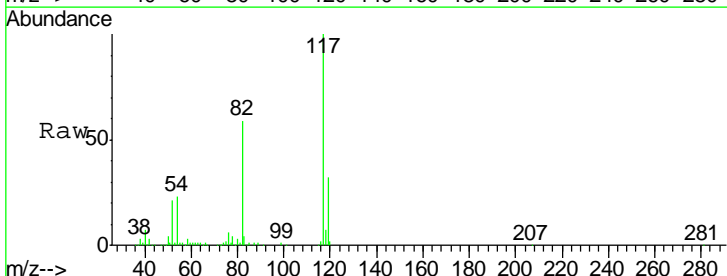
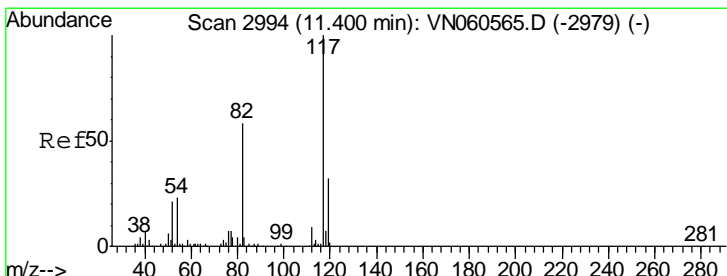
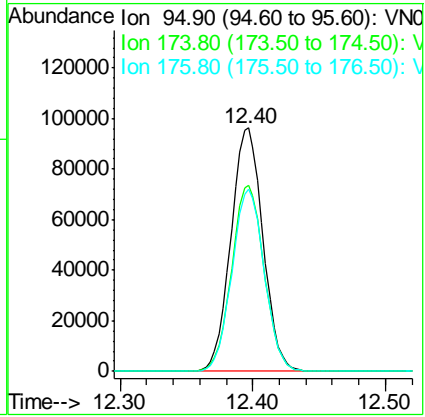




#62  
 4-Bromofluorobenzene  
 Concen: 50.287 ug/l  
 RT: 12.40 min Scan# 3304  
 Delta R.T. -0.00 min  
 Lab File: VN060852.D  
 Acq: 6 Apr 2020 15:35

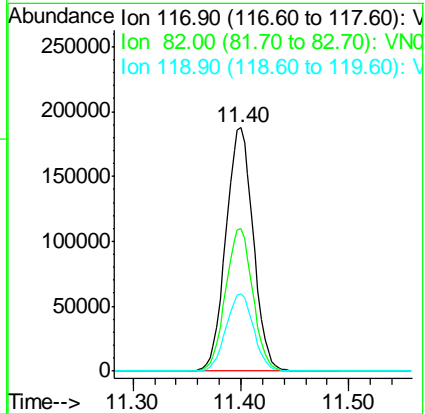
Instrument : MSVOA\_N  
 ClientSampled : TP-5

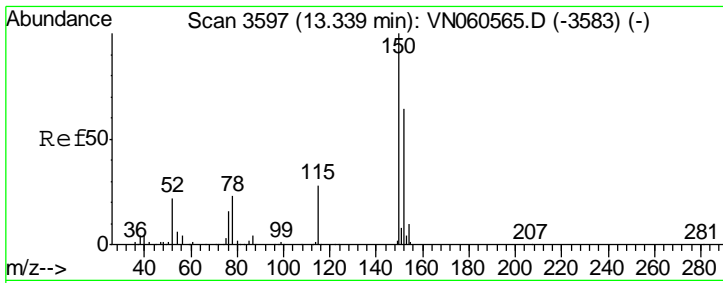
Tgt Ion	Resp	Lower	Upper
95	161174		
174	77.5	0.0	157.6
176	75.3	0.0	150.6



#63  
 Chlorobenzene-d5  
 Concen: 50.000 ug/l  
 RT: 11.40 min Scan# 2994  
 Delta R.T. -0.00 min  
 Lab File: VN060852.D  
 Acq: 6 Apr 2020 15:35

Tgt Ion	Resp	Lower	Upper
117	331100		
82	58.6	46.7	70.1
119	31.7	25.5	38.3





#72  
 1,4-Dichlorobenzene-d4  
 Concen: 50.000 ug/l  
 RT: 13.34 min Scan# 3597  
 Delta R.T. -0.00 min  
 Lab File: VN060852.D  
 Acq: 6 Apr 2020 15:35

Instrument :  
 MSVOA\_N  
 ClientSampled :  
 TP-5

Tot Ion	Resp	Lower	Upper
152	147929		
115	59.6	30.2	90.6
150	155.3	0.0	350.2

