

Data Path : Z:\voasrv\HPCHEM1\MSVOA\_N\Data\VN040622\  
 Data File : VN071891.D  
 Acq On : 06 Apr 2022 19:56  
 Operator : JC\MD  
 Sample : IBLK  
 Misc : 5.0mL/MSVOA\_N/WATER  
 ALS Vial : 22 Sample Multiplier: 1

Instrument :  
 MSVOA\_N  
 ClientSampleId :  
 IBLK

Quant Time: Apr 07 04:30:49 2022  
 Quant Method : Z:\voasrv\HPCHEM1\MSVOA\_N\methods\82N033022W.M  
 Quant Title : SW846 8260  
 QLast Update : Thu Mar 31 01:57:54 2022  
 Response via : Initial Calibration

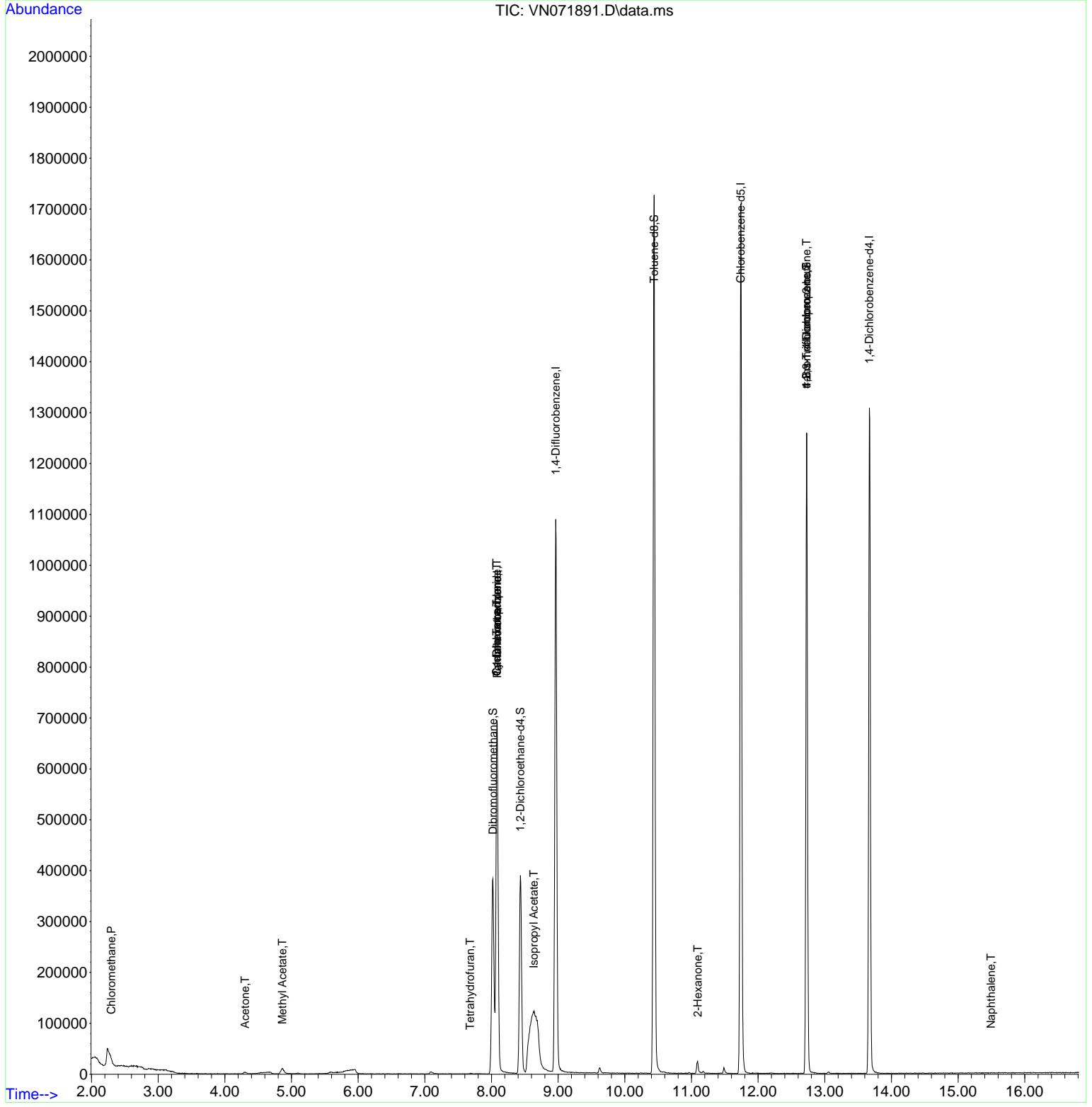
Compound	R.T.	QIon	Response	Conc	Units	Dev(Min)
-----						
Internal Standards						
1) Pentafluorobenzene	8.086	168	580851	50.000	ug/l	0.00
34) 1,4-Difluorobenzene	8.963	114	1024931	50.000	ug/l	0.00
63) Chlorobenzene-d5	11.739	117	1058256	50.000	ug/l	0.00
72) 1,4-Dichlorobenzene-d4	13.668	152	397831	50.000	ug/l	0.00
System Monitoring Compounds						
33) 1,2-Dichloroethane-d4	8.433	65	323972	48.857	ug/l	0.00
Spiked Amount	50.000	Range 61 - 141	Recovery	=	97.720%	
35) Dibromofluoromethane	8.022	113	286193	47.453	ug/l	0.00
Spiked Amount	50.000	Range 69 - 133	Recovery	=	94.900%	
50) Toluene-d8	10.439	98	1267618	51.379	ug/l	0.00
Spiked Amount	50.000	Range 65 - 126	Recovery	=	102.760%	
62) 4-Bromofluorobenzene	12.727	95	441236	55.298	ug/l	0.00
Spiked Amount	50.000	Range 58 - 135	Recovery	=	110.600%	
Target Compounds						
					Qvalue	
3) Chloromethane	2.299	50	1704	0.291	ug/l #	78
16) Acetone	4.304	43	2588	0.913	ug/l #	74
18) Methyl Acetate	4.863	43	23480	1.889	ug/l	99
29) Tetrahydrofuran	7.681	42	576	0.218	ug/l #	38
31) Cyclohexane	8.081	56	9525	1.056	ug/l #	1
36) 1,1-Dichloropropene	8.081	75	40016	4.751	ug/l #	48
38) Carbon Tetrachloride	8.081	117	52506	6.361	ug/l #	16
43) Isopropyl Acetate	8.633	43	384894	25.102	ug/l #	53
59) 2-Hexanone	11.092	43	5404	0.871	ug/l #	46
76) 1,2,3-Trichloropropane	12.727	75	209411	22.722	ug/l #	1
81) trans-1,4-Dichloro-2-b...	12.727	75	209411	70.416	ug/l #	10
95) Naphthalene	15.492	128	138	3.810	ug/l #	69
-----						

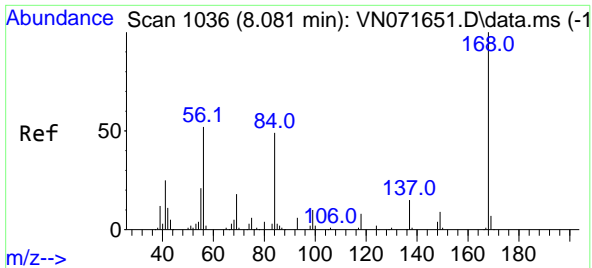
(#) = qualifier out of range (m) = manual integration (+) = signals summed

Data Path : Z:\voasrv\HPCHEM1\MSVOA\_N\Data\VN040622\  
 Data File : VN071891.D  
 Acq On : 06 Apr 2022 19:56  
 Operator : JC\MD  
 Sample : IBLK  
 Misc : 5.0mL/MSVOA\_N/WATER  
 ALS Vial : 22 Sample Multiplier: 1

Instrument :  
 MSVOA\_N  
 ClientSampleId :  
 IBLK

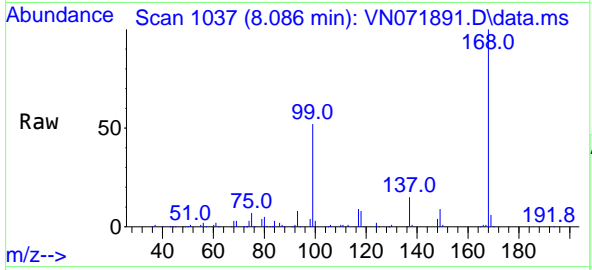
Quant Time: Apr 07 04:30:49 2022  
 Quant Method : Z:\voasrv\HPCHEM1\MSVOA\_N\methods\82N033022W.M  
 Quant Title : SW846 8260  
 QLast Update : Thu Mar 31 01:57:54 2022  
 Response via : Initial Calibration



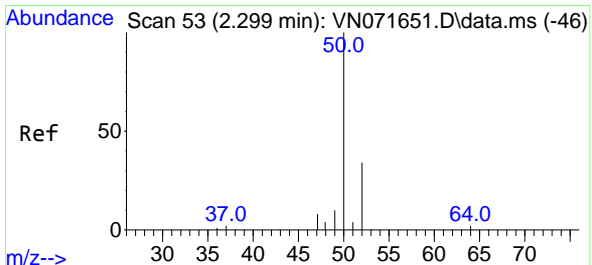
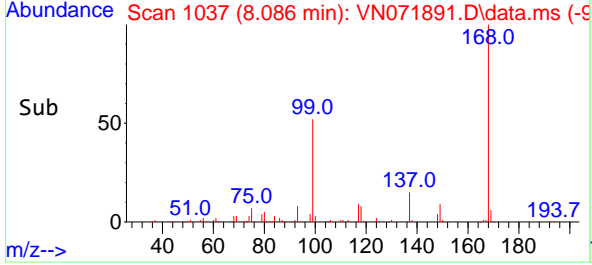
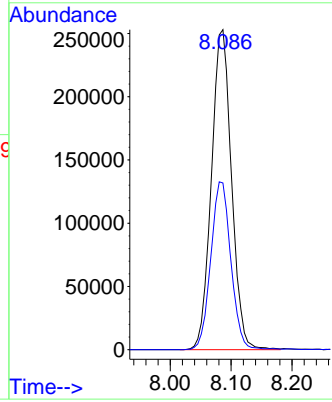


#1  
 Pentafluorobenzene  
 Concen: 50.000 ug/l  
 RT: 8.086 min Scan# 10  
 Delta R.T. 0.005 min  
 Lab File: VN071891.D  
 Acq: 06 Apr 2022 19:56

Instrument :  
 MSVOA\_N  
 ClientSampleId :  
 IBLK

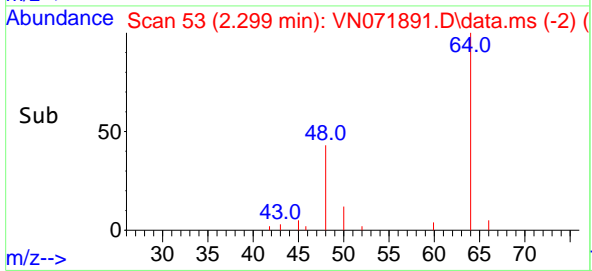
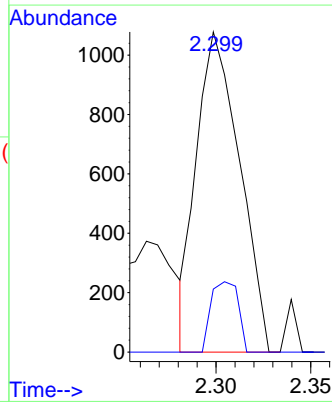
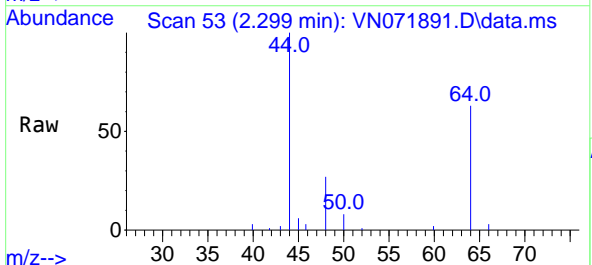


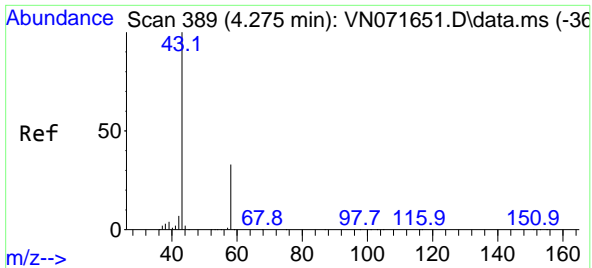
Tgt Ion:168 Resp: 580851  
 Ion Ratio Lower Upper  
 168 100  
 99 52.1 42.3 63.5



#3  
 Chloromethane  
 Concen: 0.291 ug/l  
 RT: 2.299 min Scan# 53  
 Delta R.T. -0.000 min  
 Lab File: VN071891.D  
 Acq: 06 Apr 2022 19:56

Tgt Ion: 50 Resp: 1704  
 Ion Ratio Lower Upper  
 50 100  
 52 19.7 25.7 38.5#

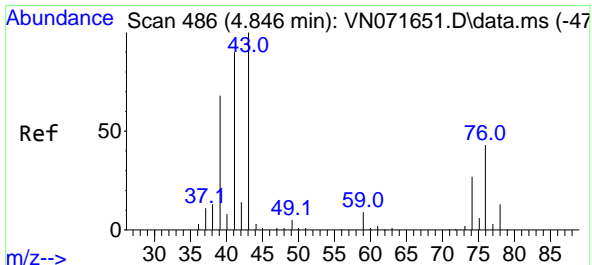
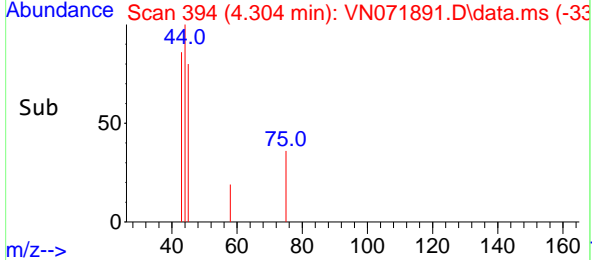
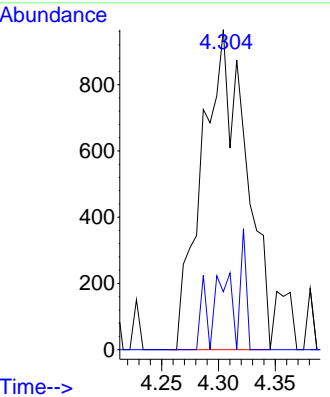
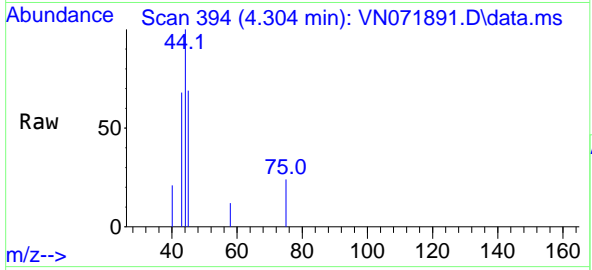




#16  
 Acetone  
 Concen: 0.913 ug/l  
 RT: 4.304 min Scan# 394  
 Delta R.T. 0.029 min  
 Lab File: VN071891.D  
 Acq: 06 Apr 2022 19:56

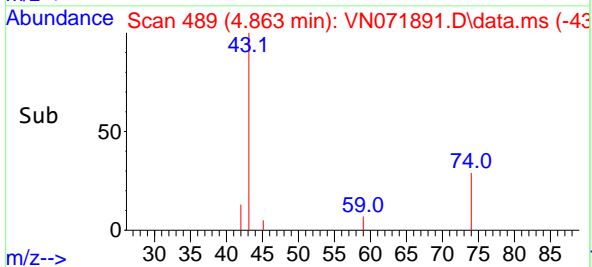
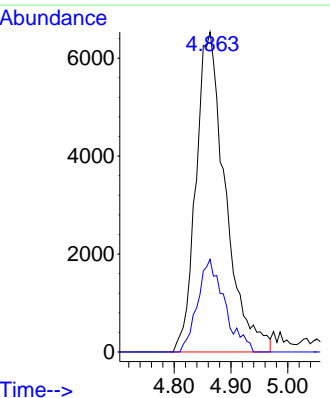
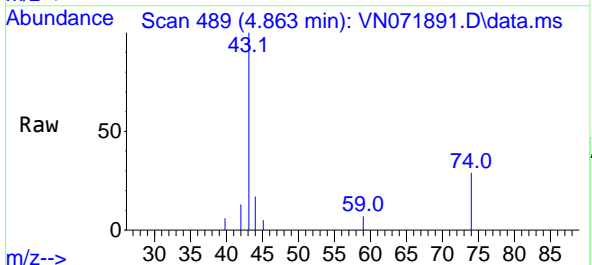
Instrument : MSVOA\_N  
 ClientSampleId : IBLK

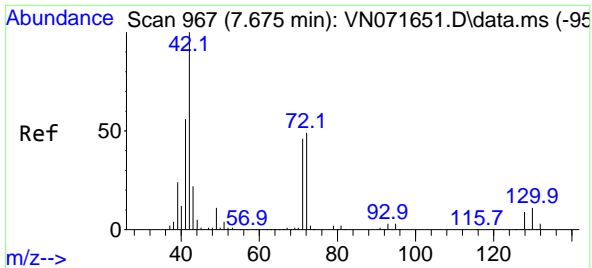
Tgt Ion: 43 Resp: 2588  
 Ion Ratio Lower Upper  
 43 100  
 58 18.1 26.0 39.0#



#18  
 Methyl Acetate  
 Concen: 1.889 ug/l  
 RT: 4.863 min Scan# 489  
 Delta R.T. 0.017 min  
 Lab File: VN071891.D  
 Acq: 06 Apr 2022 19:56

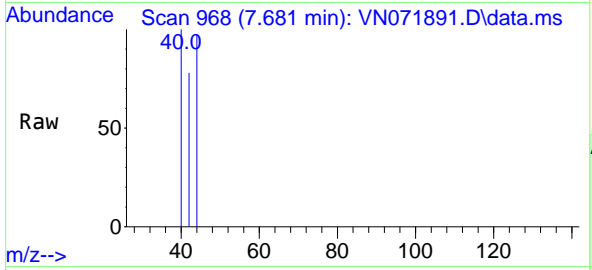
Tgt Ion: 43 Resp: 23480  
 Ion Ratio Lower Upper  
 43 100  
 74 26.7 21.6 32.4





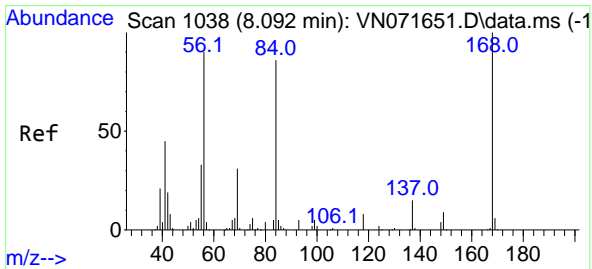
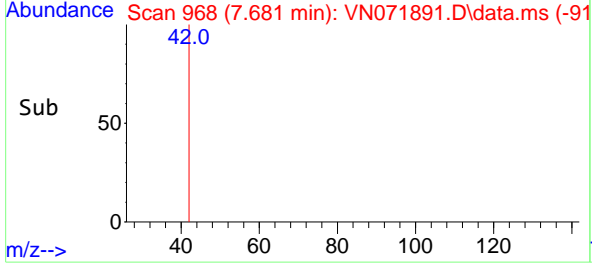
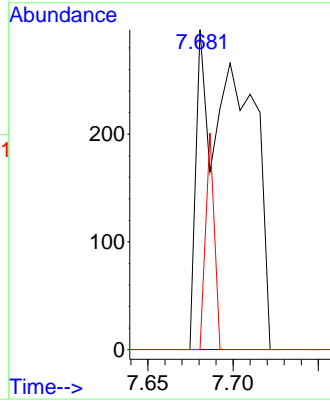
#29  
 Tetrahydrofuran  
 Concen: 0.218 ug/l  
 RT: 7.681 min Scan# 90  
 Delta R.T. 0.006 min  
 Lab File: VN071891.D  
 Acq: 06 Apr 2022 19:56

Instrument :  
 MSVOA\_N  
 ClientSampleId :  
 IBLK

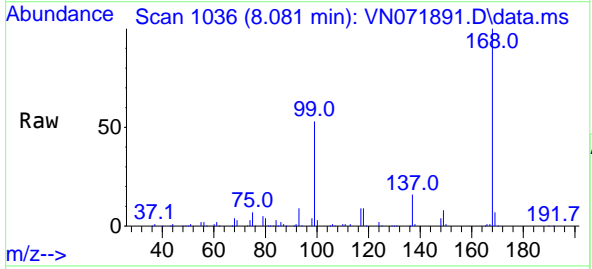


Tgt Ion: 42 Resp: 576

Ion	Ratio	Lower	Upper
42	100		
72	0.0	39.7	59.5#
71	12.3	36.6	55.0#

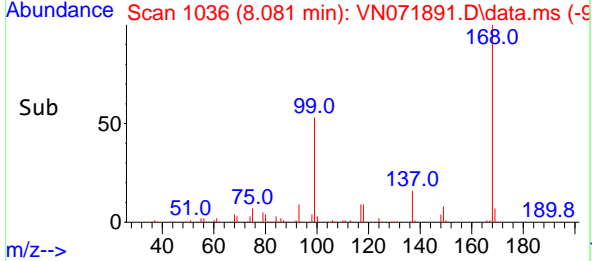
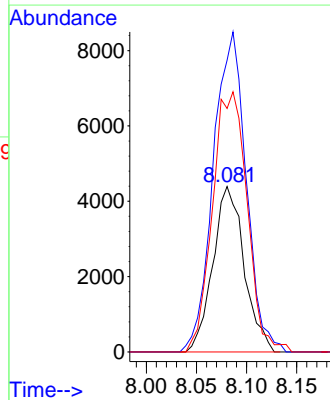


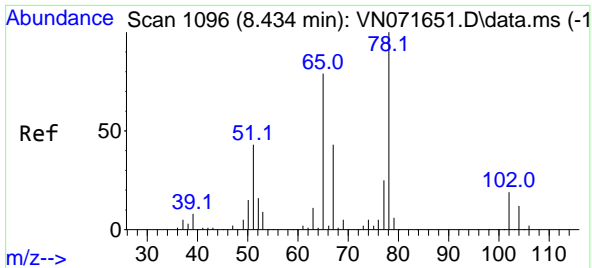
#31  
 Cyclohexane  
 Concen: 1.056 ug/l  
 RT: 8.081 min Scan# 1036  
 Delta R.T. -0.011 min  
 Lab File: VN071891.D  
 Acq: 06 Apr 2022 19:56



Tgt Ion: 56 Resp: 9525

Ion	Ratio	Lower	Upper
56	100		
69	176.3	27.8	41.8#
84	147.2	76.9	115.3#

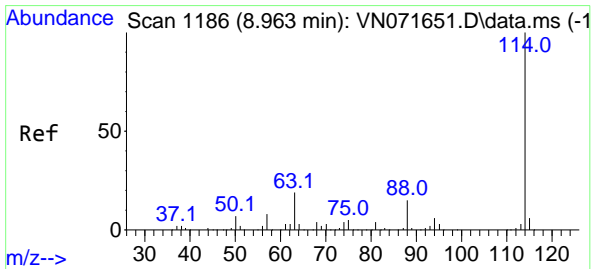
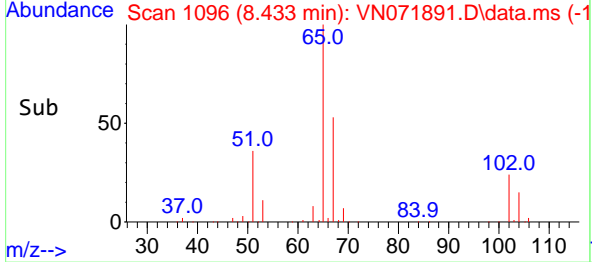
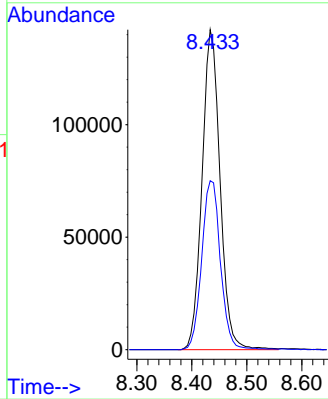
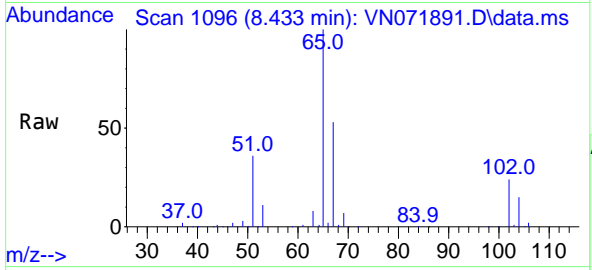




#33  
 1,2-Dichloroethane-d4  
 Concen: 48.857 ug/l  
 RT: 8.433 min Scan# 1096  
 Delta R.T. -0.001 min  
 Lab File: VN071891.D  
 Acq: 06 Apr 2022 19:56

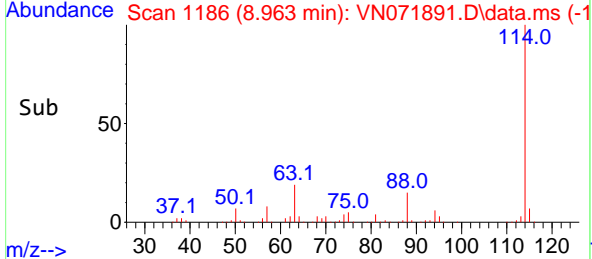
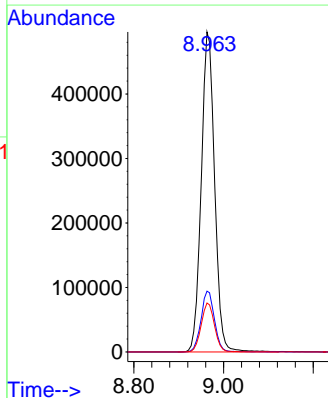
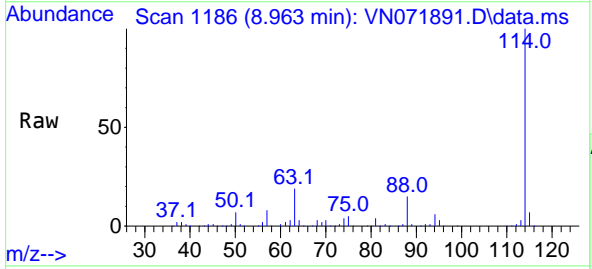
Instrument : MSVOA\_N  
 ClientSampleId : IBLK

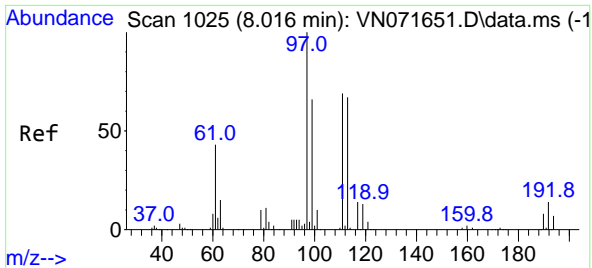
Tgt Ion: 65 Resp: 323972  
 Ion Ratio Lower Upper  
 65 100  
 67 54.9 0.0 104.8



#34  
 1,4-Difluorobenzene  
 Concen: 50.000 ug/l  
 RT: 8.963 min Scan# 1186  
 Delta R.T. -0.000 min  
 Lab File: VN071891.D  
 Acq: 06 Apr 2022 19:56

Tgt Ion: 114 Resp: 1024931  
 Ion Ratio Lower Upper  
 114 100  
 63 19.0 0.0 40.0  
 88 15.3 0.0 32.6



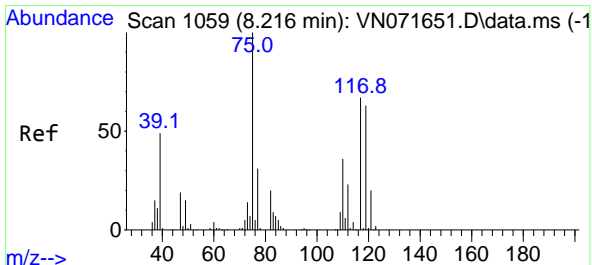
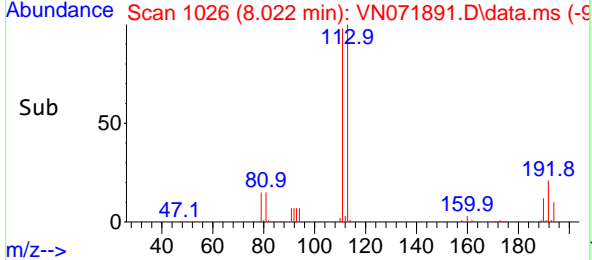
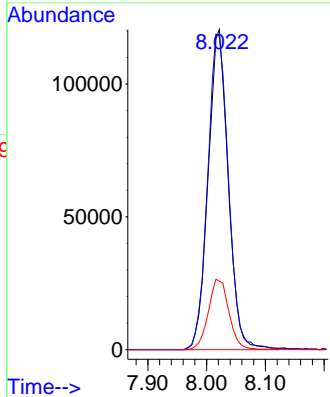
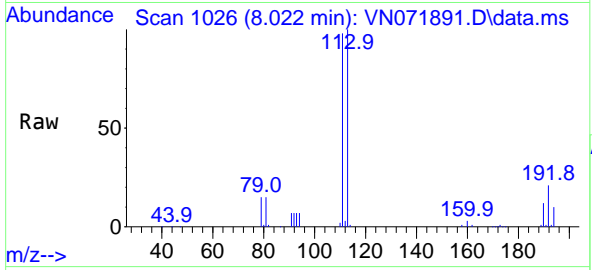


#35  
 Dibromofluoromethane  
 Concen: 47.453 ug/l  
 RT: 8.022 min Scan# 1036  
 Delta R.T. 0.006 min  
 Lab File: VN071891.D  
 Acq: 06 Apr 2022 19:56

Instrument : MSVOA\_N  
 ClientSampleId : IBLK

Tgt Ion: 113 Resp: 286193

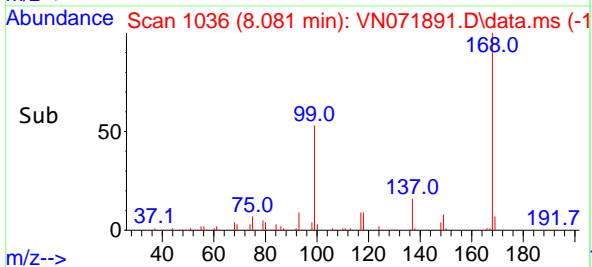
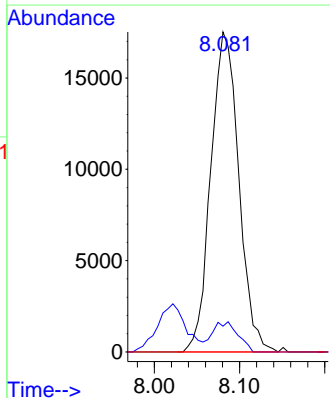
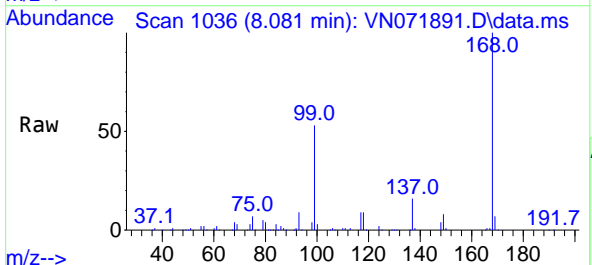
Ion	Ratio	Lower	Upper
113	100		
111	102.7	81.4	122.0
192	22.5	17.0	25.6

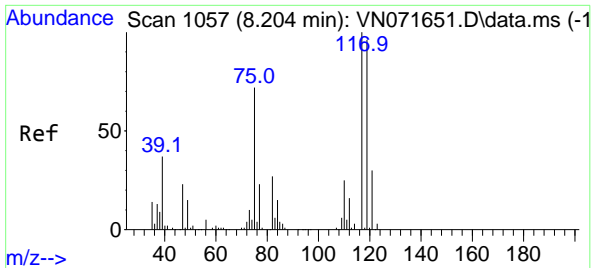


#36  
 1,1-Dichloropropene  
 Concen: 4.751 ug/l  
 RT: 8.081 min Scan# 1036  
 Delta R.T. -0.135 min  
 Lab File: VN071891.D  
 Acq: 06 Apr 2022 19:56

Tgt Ion: 75 Resp: 40016

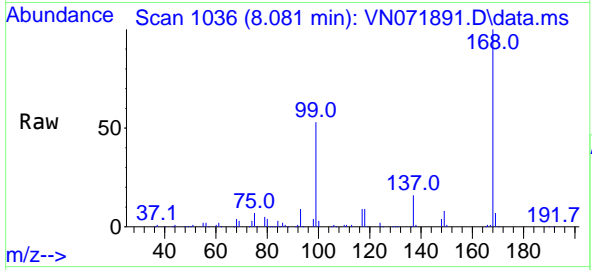
Ion	Ratio	Lower	Upper
75	100		
110	8.6	18.3	54.8#
77	0.0	25.1	37.7#





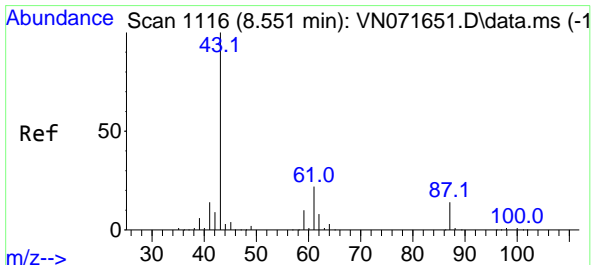
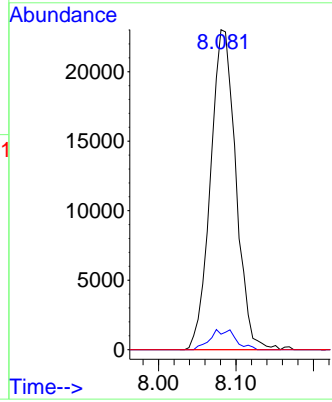
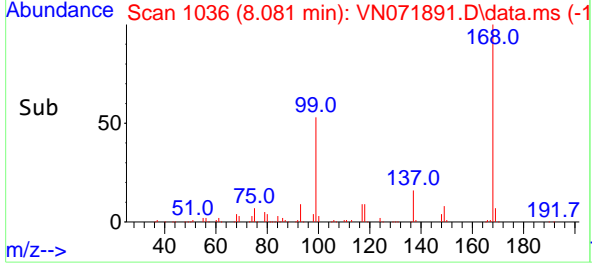
#38  
 Carbon Tetrachloride  
 Concen: 6.361 ug/l  
 RT: 8.081 min Scan# 1130  
 Delta R.T. -0.123 min  
 Lab File: VN071891.D  
 Acq: 06 Apr 2022 19:56

Instrument : MSVOA\_N  
 ClientSampleId : IBLK

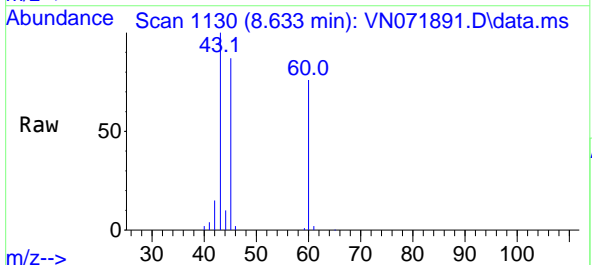


Tgt Ion: 117 Resp: 52506

Ion	Ratio	Lower	Upper
117	100		
119	4.9	75.8	113.8#
121	0.0	24.6	37.0#

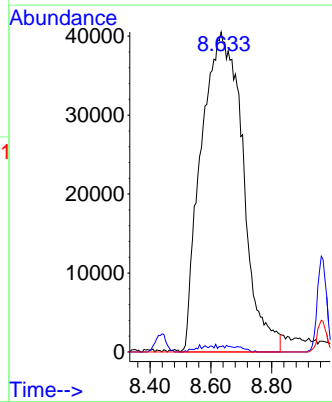
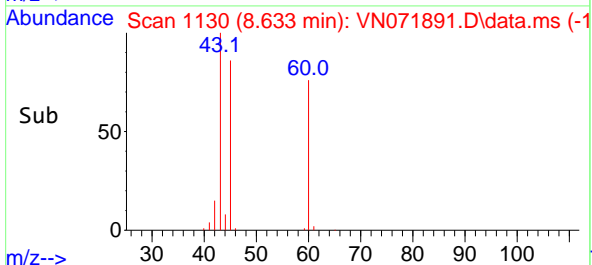


#43  
 Isopropyl Acetate  
 Concen: 25.102 ug/l  
 RT: 8.633 min Scan# 1130  
 Delta R.T. 0.082 min  
 Lab File: VN071891.D  
 Acq: 06 Apr 2022 19:56

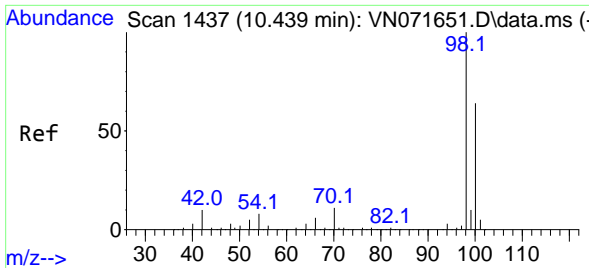


Tgt Ion: 43 Resp: 384894

Ion	Ratio	Lower	Upper
43	100		
61	0.0	21.9	32.9#
87	0.0	12.0	18.0#



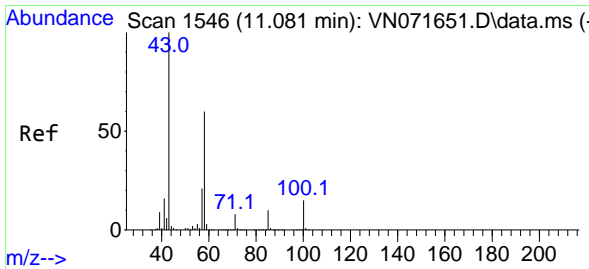
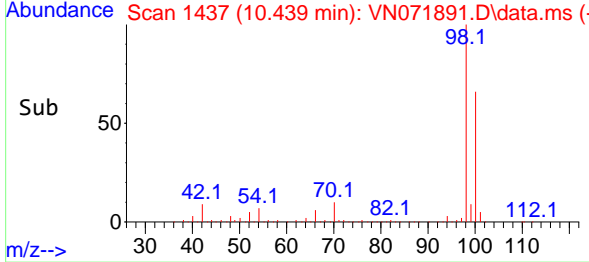
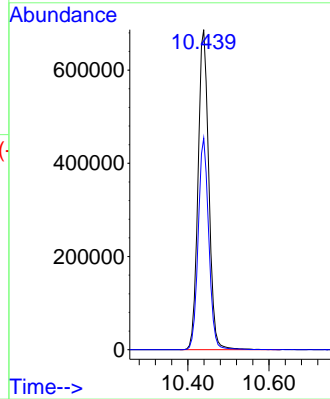
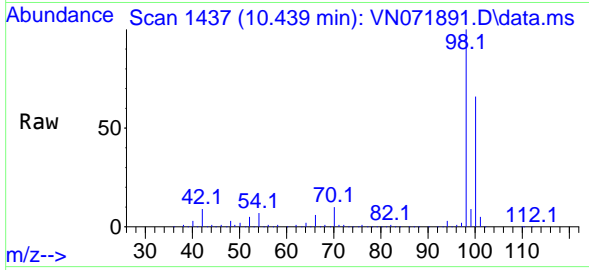




#50  
 Toluene-d8  
 Concen: 51.379 ug/l  
 RT: 10.439 min Scan# 1437  
 Delta R.T. 0.000 min  
 Lab File: VN071891.D  
 Acq: 06 Apr 2022 19:56

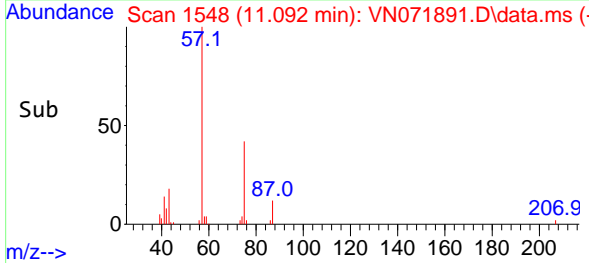
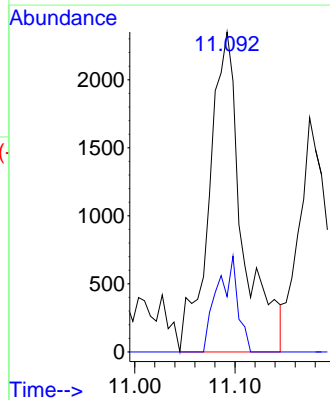
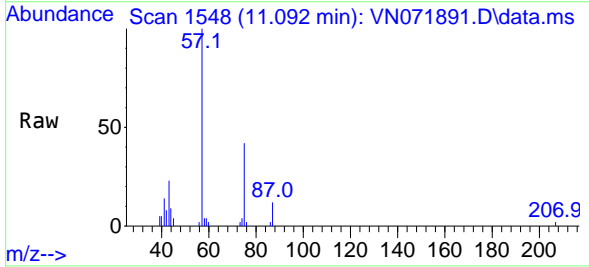
Instrument : MSVOA\_N  
 ClientSampleId : IBLK

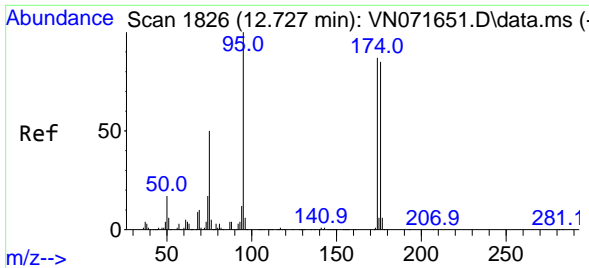
Tgt Ion: 98 Resp: 1267618  
 Ion Ratio Lower Upper  
 98 100  
 100 65.0 52.6 78.8



#59  
 2-Hexanone  
 Concen: 0.871 ug/l  
 RT: 11.092 min Scan# 1548  
 Delta R.T. 0.011 min  
 Lab File: VN071891.D  
 Acq: 06 Apr 2022 19:56

Tgt Ion: 43 Resp: 5404  
 Ion Ratio Lower Upper  
 43 100  
 58 18.4 29.7 89.1#



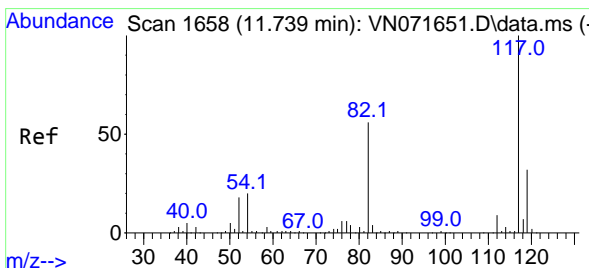
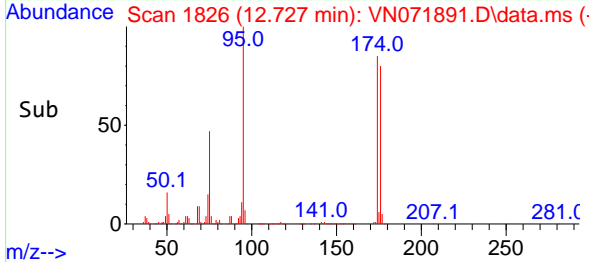
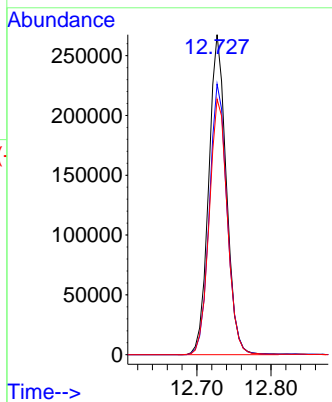
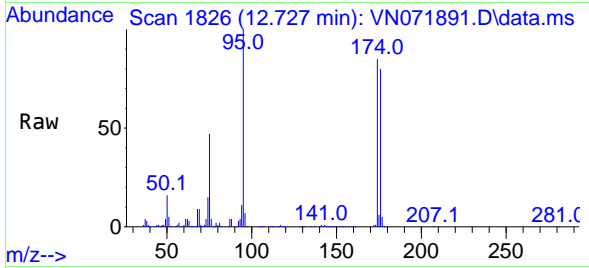


#62  
 4-Bromofluorobenzene  
 Concen: 55.298 ug/l  
 RT: 12.727 min Scan# 1826  
 Delta R.T. 0.000 min  
 Lab File: VN071891.D  
 Acq: 06 Apr 2022 19:56

Instrument : MSVOA\_N  
 ClientSampleId : IBLK

Tgt Ion: 95 Resp: 441236

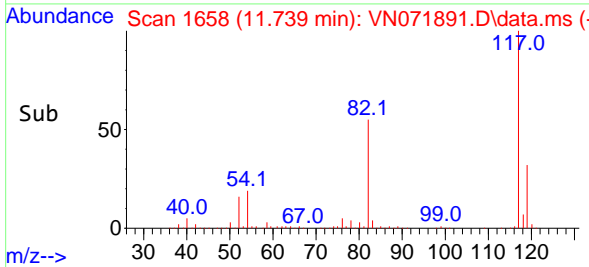
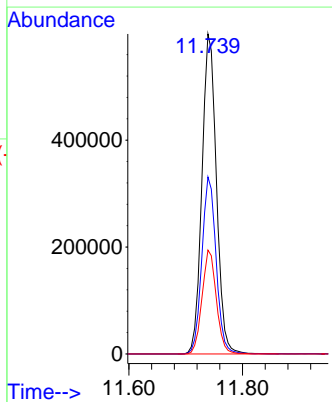
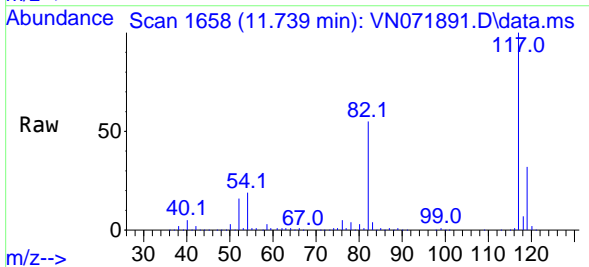
Ion	Ratio	Lower	Upper
95	100		
174	85.0	0.0	167.6
176	82.2	0.0	163.4

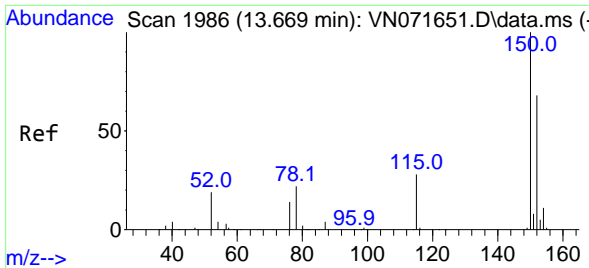


#63  
 Chlorobenzene-d5  
 Concen: 50.000 ug/l  
 RT: 11.739 min Scan# 1658  
 Delta R.T. 0.000 min  
 Lab File: VN071891.D  
 Acq: 06 Apr 2022 19:56

Tgt Ion: 117 Resp: 1058256

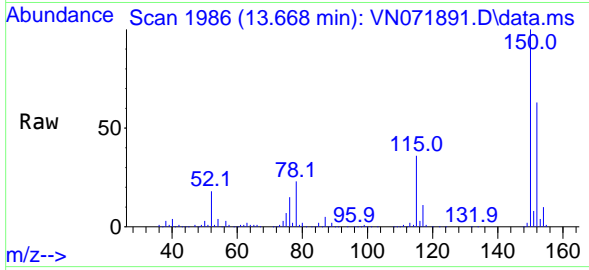
Ion	Ratio	Lower	Upper
117	100		
82	55.3	44.2	66.2
119	32.5	25.4	38.0



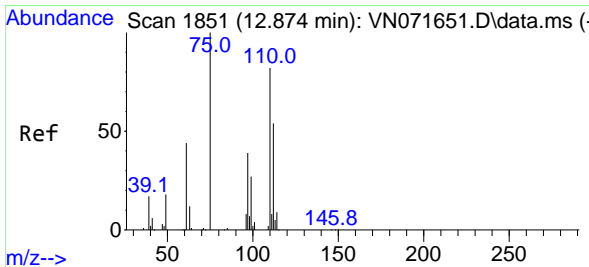
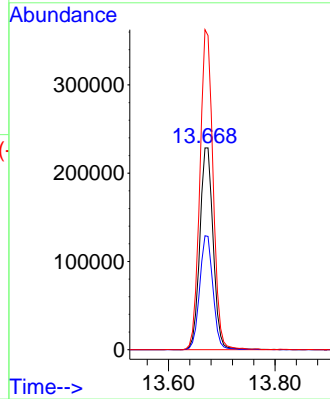
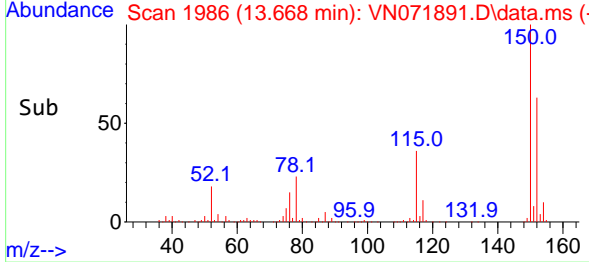


#72  
 1,4-Dichlorobenzene-d4  
 Concen: 50.000 ug/l  
 RT: 13.668 min Scan# 1986  
 Delta R.T. -0.001 min  
 Lab File: VN071891.D  
 Acq: 06 Apr 2022 19:56

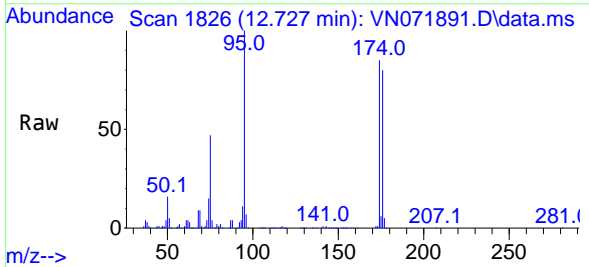
Instrument : MSVOA\_N  
 ClientSampleId : IBLK



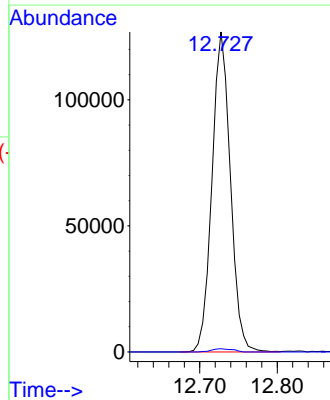
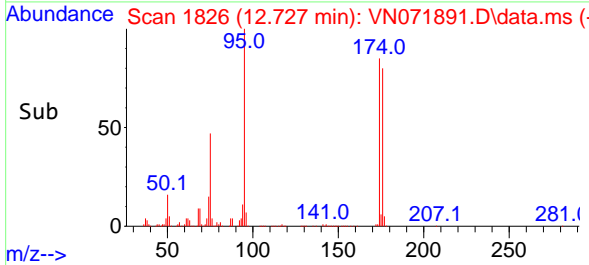
Tgt Ion:152 Resp: 397831  
 Ion Ratio Lower Upper  
 152 100  
 115 56.3 28.9 86.7  
 150 156.4 0.0 356.2

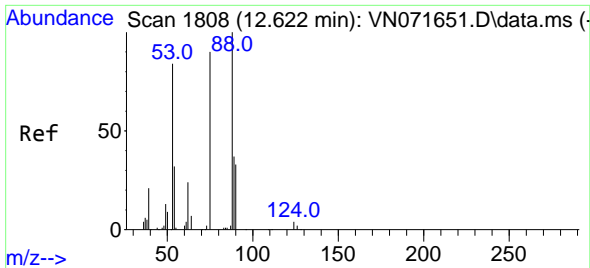


#76  
 1,2,3-Trichloropropane  
 Concen: 22.722 ug/l  
 RT: 12.727 min Scan# 1826  
 Delta R.T. -0.147 min  
 Lab File: VN071891.D  
 Acq: 06 Apr 2022 19:56



Tgt Ion: 75 Resp: 209411  
 Ion Ratio Lower Upper  
 75 100  
 77 1.2 98.5 295.5#

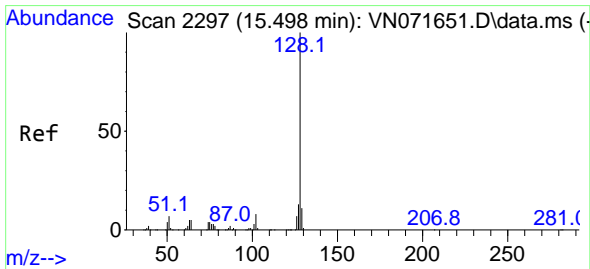
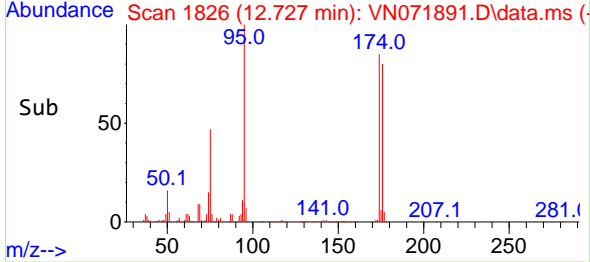
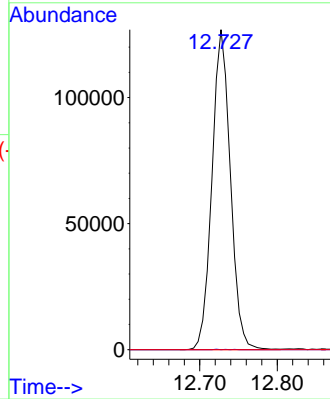
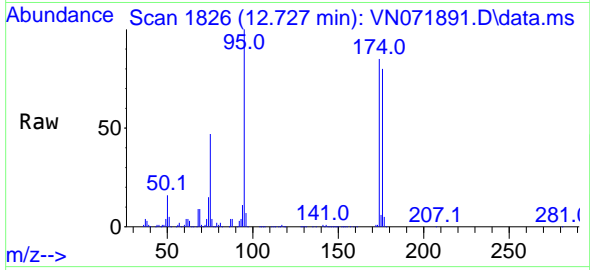




#81  
 trans-1,4-Dichloro-2-butene  
 Concen: 70.416 ug/l  
 RT: 12.727 min Scan# 1808  
 Delta R.T. 0.105 min  
 Lab File: VN071891.D  
 Acq: 06 Apr 2022 19:56

Instrument : MSVOA\_N  
 ClientSampleId : IBLK

Tgt Ion: 75 Resp: 209411  
 Ion Ratio Lower Upper  
 75 100  
 53 0.0 78.0 117.0#  
 89 0.0 37.2 55.8#



#95  
 Naphthalene  
 Concen: 3.810 ug/l  
 RT: 15.492 min Scan# 2296  
 Delta R.T. -0.006 min  
 Lab File: VN071891.D  
 Acq: 06 Apr 2022 19:56

Tgt Ion: 128 Resp: 138  
 Ion Ratio Lower Upper  
 128 100  
 127 0.0 10.3 15.5#  
 129 0.0 8.6 13.0#

