

Data File : VN054985.D
 Acq On : 11 Apr 2019 18:57
 Operator : JC/SP
 Sample : K2379-01
 Misc : 5.00mL/MSVOA_N/WATER
 ALS Vial : 12 Sample Multiplier: 1

Instrument :
 MSVOA_N
 ClientSampleId :
 SPDES-1

Quant Time: Apr 12 08:03:08 2019
 Quant Method : Z:\VOASRV\HPCHEM1\MSVOA_N\METHODS\624N041119W.M
 Quant Title : METHOD 624 VOLATILE ORGANIC ANALYSIS
 QLast Update : Fri Apr 12 07:55:25 2019
 Response via : Initial Calibration

Internal Standards	R.T.	QIon	Response	Conc	Units	Dev(Min)
1) Bromochloromethane	7.20	128	74196	30.00	ug/l	0.00
28) 1,4-Difluorobenzene	8.58	114	390881	30.00	ug/l	0.00
57) Chlorobenzene-d5	11.41	117	313711	30.00	ug/l	0.00

System Monitoring Compounds

27) 1,2-Dichloroethane-d4	8.03	65	169776	30.02	ug/l	0.00
Spiked Amount	30.000	Range	50 - 169	Recovery	=	100.07%
60) 4-Bromofluorobenzene	12.40	95	109013	22.32	ug/l	0.00
Spiked Amount	30.000	Range	56 - 143	Recovery	=	74.40%
63) Toluene-d8	10.09	98	479707	32.16	ug/l	0.00
Spiked Amount	30.000	Range	66 - 137	Recovery	=	107.20%

Target Compounds

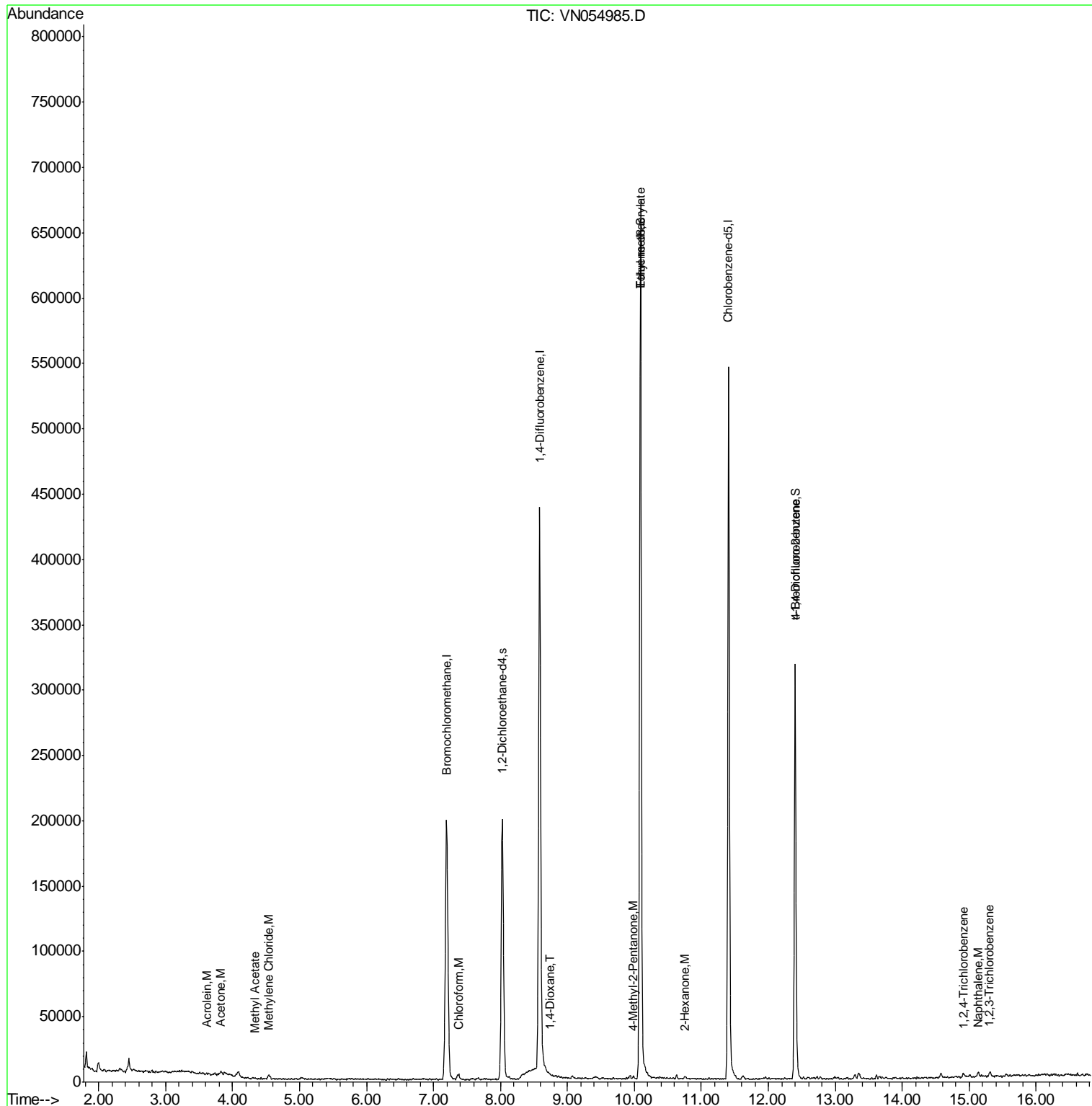
						Qvalue
12) Methyl Acetate	4.33	43	820	0.203	ug/l #	12
13) Acrolein	3.61	56	528	1.488	ug/l	92
15) Acetone	3.82	58	238	0.580	ug/l #	49
18) Methylene Chloride	4.54	84	1669	0.343	ug/l #	69
25) Chloroform	7.37	83	2058	0.245	ug/l	88
45) 1,4-Dioxane	8.74	88	267	6.908	ug/l #	10
51) Ethyl methacrylate	10.10	69	1487	0.326	ug/l	88
58) 4-Methyl-2-Pentanone	9.99	43	781	0.216	ug/l #	87
59) 2-Hexanone	10.76	43	1222	0.532	ug/l #	86
77) t-1,4-Dichloro-2-butene	12.40	75	56539	65.255	ug/l #	1
89) 1,2,4-Trichlorobenzene	14.91	180	936	0.297	ug/l #	81
91) Naphthalene	15.13	128	2994	0.454	ug/l #	90
92) 1,2,3-Trichlorobenzene	15.31	180	1240	0.394	ug/l	72

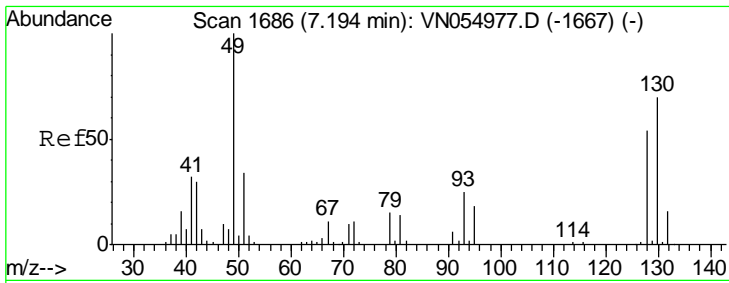
(#) = qualifier out of range (m) = manual integration (+) = signals summed

Data File : VN054985.D
Acq On : 11 Apr 2019 18:57
Operator : JC/SP
Sample : K2379-01
Misc : 5.00mL/MSVOA_N/WATER
ALS Vial : 12 Sample Multiplier: 1

Instrument :
MSVOA_N
Client Sampled :
SPDES-1

Quant Time: Apr 12 08:03:08 2019
Quant Method : Z:\VOASRV\HPCHEM1\MSVOA_N\METHODS\624N041119W.M
Quant Title : METHOD 624 VOLATILE ORGANIC ANALYSIS
QLast Update : Fri Apr 12 07:55:25 2019
Response via : Initial Calibration

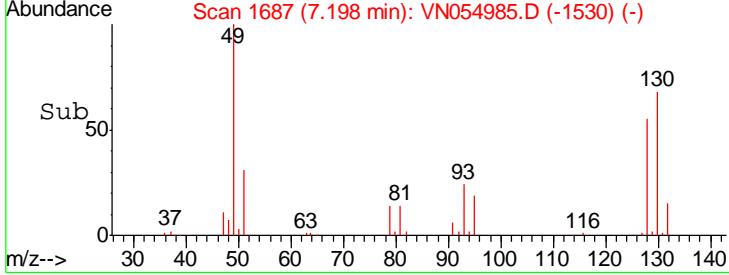
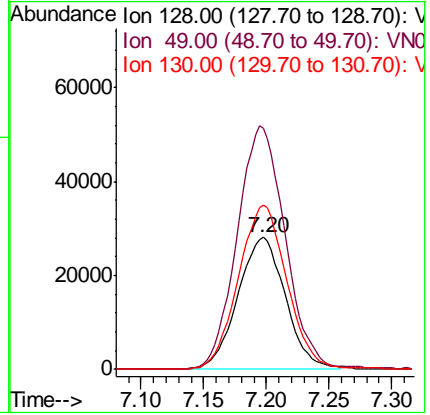
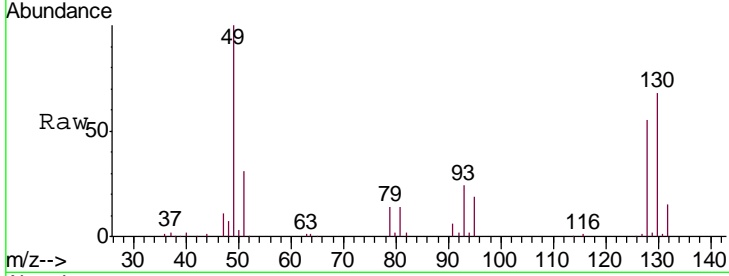




#1
 Bromochloromethane
 Concen: 30.000 ug/l
 RT: 7.20 min Scan# 1687
 Delta R.T. 0.00 min
 Lab File: VN054985.D
 Acq: 11 Apr 2019 18:57

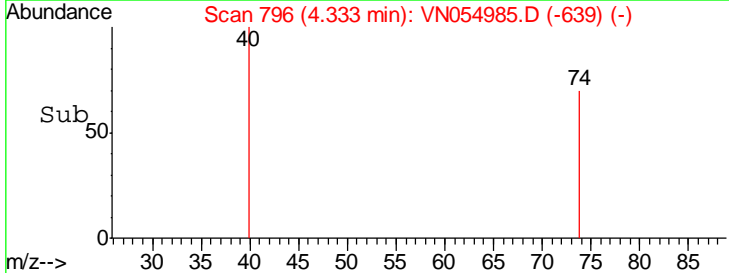
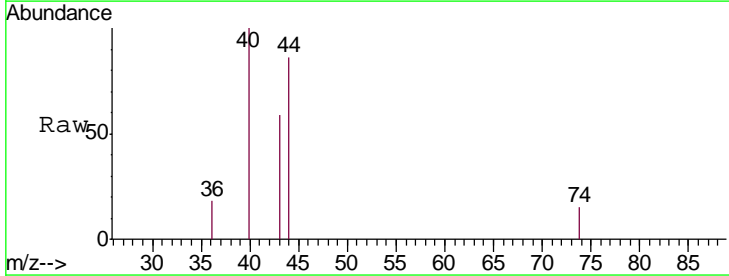
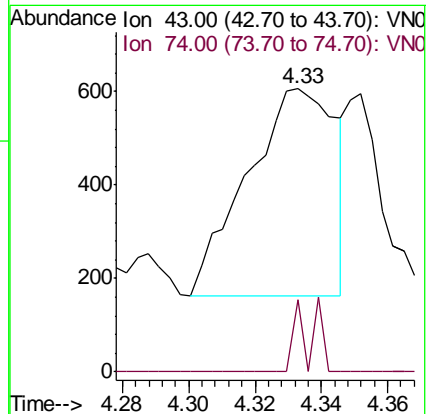
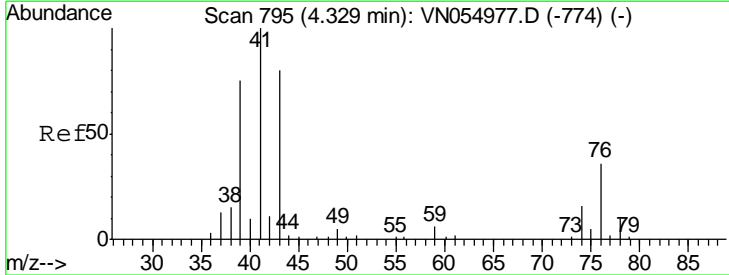
Instrument : MSVOA_N
 ClientSampled : SPDES-1

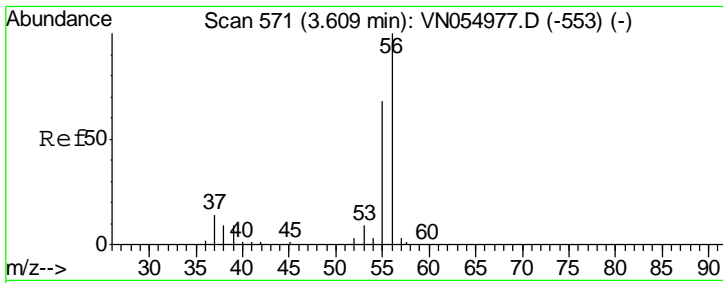
Tgt Ion	Resp	Lower	Upper
128	74196		
49	186.0	0.0	480.3
130	126.5	0.0	322.2



#12
 Methyl Acetate
 Concen: 0.203 ug/l
 RT: 4.33 min Scan# 796
 Delta R.T. 0.00 min
 Lab File: VN054985.D
 Acq: 11 Apr 2019 18:57

Tgt Ion	Resp	Lower	Upper
43	820		
43	100		
74	61.1	16.2	24.4#

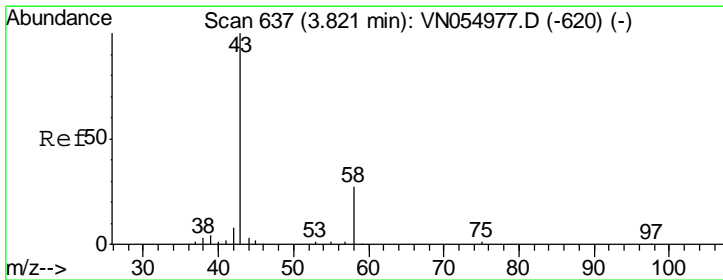
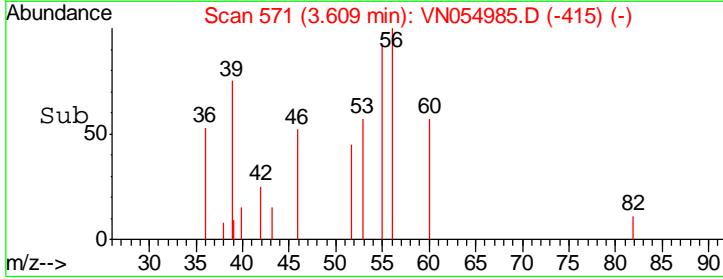
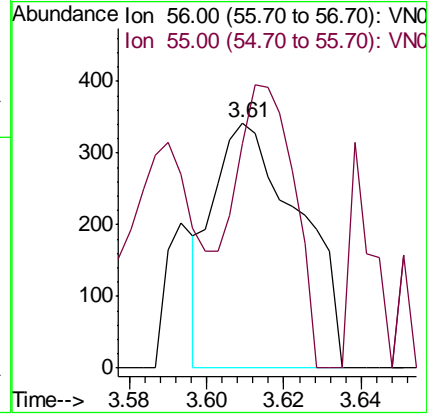
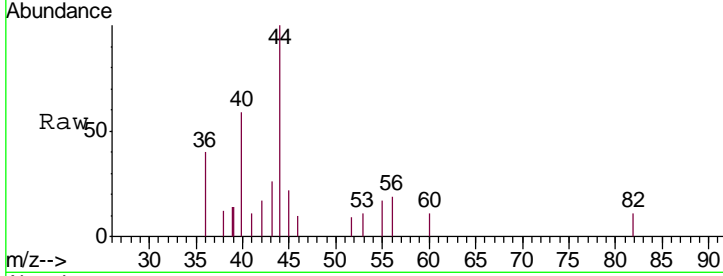




#13
 Acrolein
 Concen: 1.488 ug/l
 RT: 3.61 min Scan# 571
 Delta R.T. 0.00 min
 Lab File: VN054985.D
 Acq: 11 Apr 2019 18:57

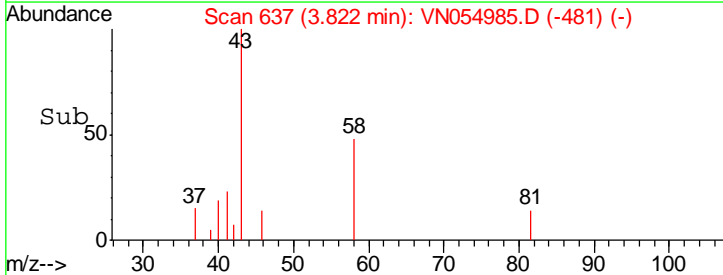
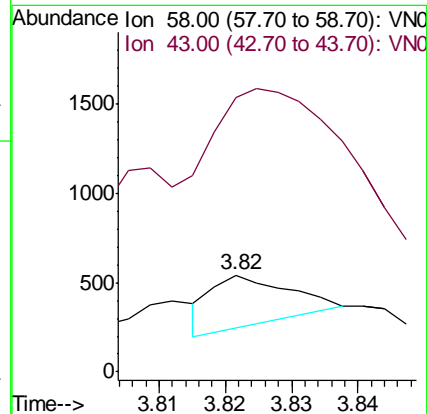
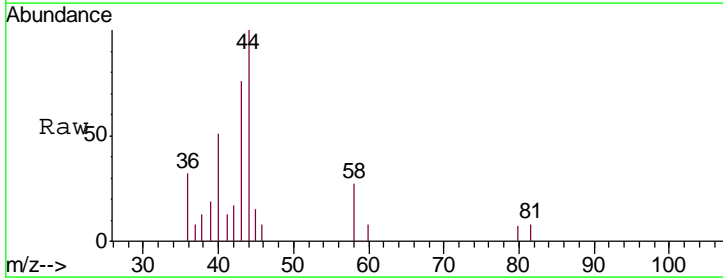
Instrument :
 MSVOA_N
 ClientSampled :
 SPDES-1

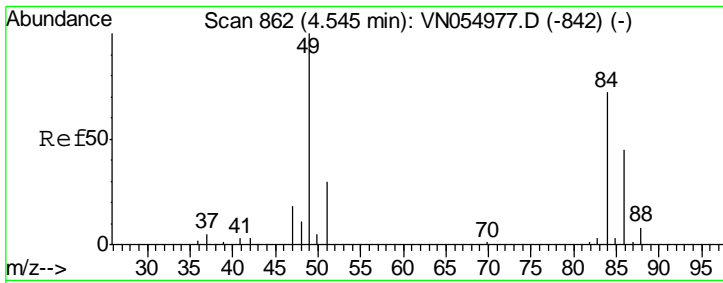
Tgt Ion: 56 Resp: 528
 Ion Ratio Lower Upper
 56 100
 55 77.5 57.0 85.4



#15
 Acetone
 Concen: 0.580 ug/l
 RT: 3.82 min Scan# 637
 Delta R.T. 0.00 min
 Lab File: VN054985.D
 Acq: 11 Apr 2019 18:57

Tgt Ion: 58 Resp: 238
 Ion Ratio Lower Upper
 58 100
 43 256.7 297.2 445.8#

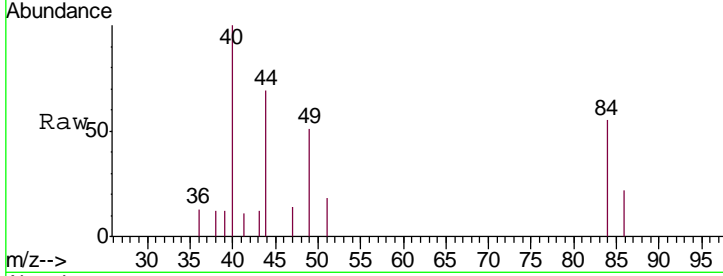




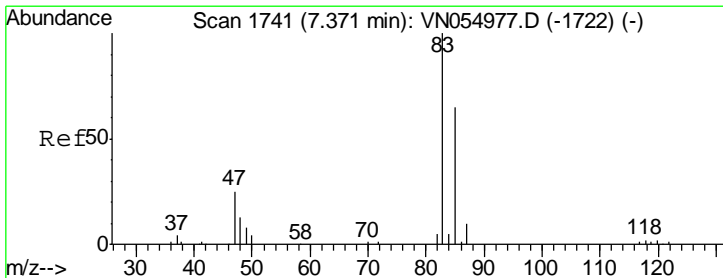
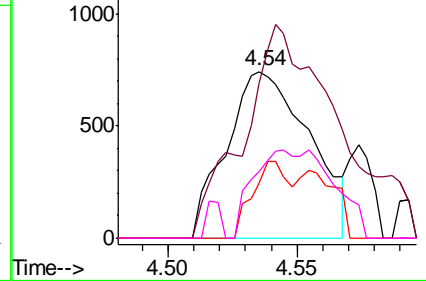
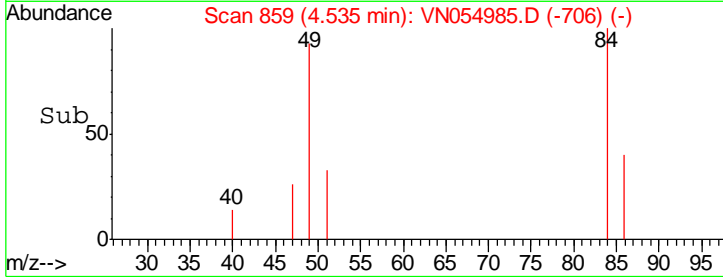
#18
 Methylene Chloride
 Concen: 0.343 ug/l
 RT: 4.54 min Scan# 859
 Delta R.T. -0.01 min
 Lab File: VN054985.D
 Acq: 11 Apr 2019 18:57

Instrument :
 MSVOA_N
 ClientSampled :
 SPDES-1

Tgt Ion	Resp	Lower	Upper
84	1669		
49	92.7	111.0	166.4#
51	33.0	33.4	50.2#
86	39.8	49.5	74.3#

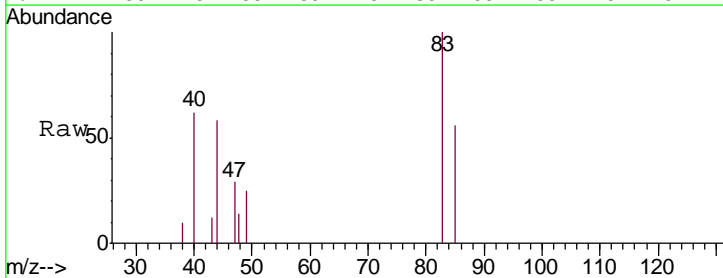


Abundance Ion 84.00 (83.70 to 84.70): VNC
 Ion 49.00 (48.70 to 49.70): VNC
 Ion 51.00 (50.70 to 51.70): VNC
 Ion 86.00 (85.70 to 86.70): VNC

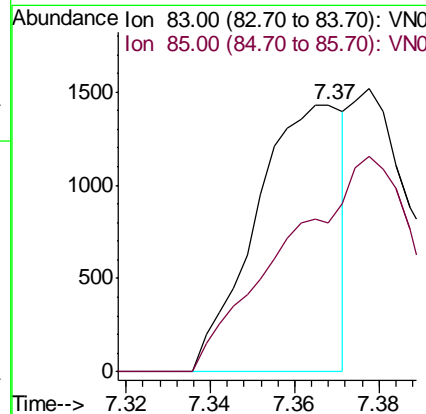
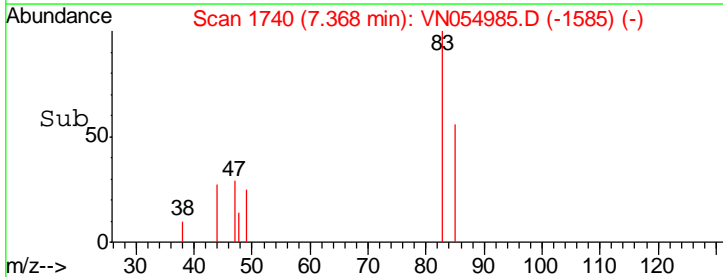


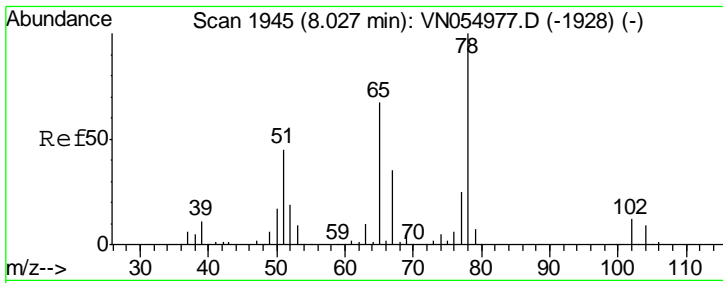
#25
 Chloroform
 Concen: 0.245 ug/l
 RT: 7.37 min Scan# 1740
 Delta R.T. -0.00 min
 Lab File: VN054985.D
 Acq: 11 Apr 2019 18:57

Tgt Ion	Resp	Lower	Upper
83	2058		
85	55.6	51.8	77.8



Abundance Ion 83.00 (82.70 to 83.70): VNC
 Ion 85.00 (84.70 to 85.70): VNC

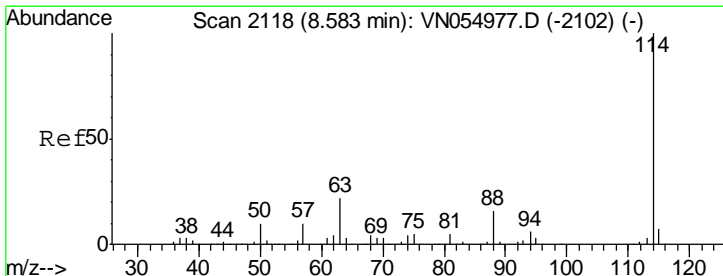
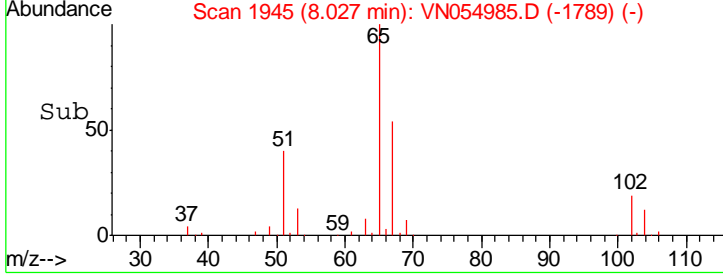
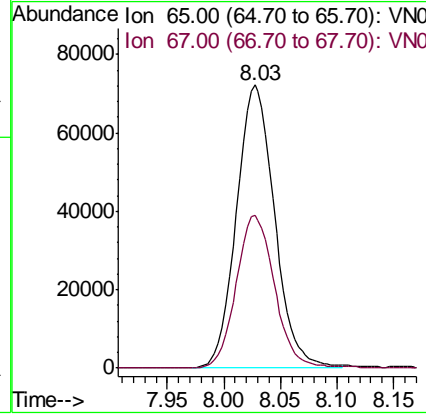
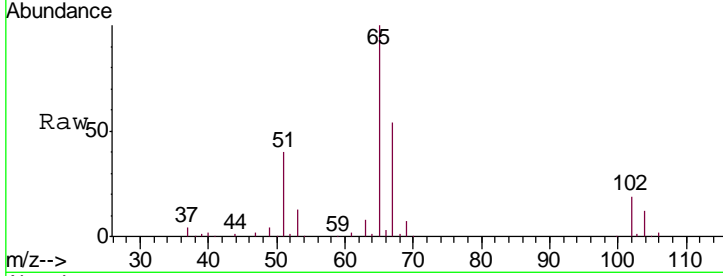




#27
 1,2-Dichloroethane-d4
 Concen: Below ug/l
 RT: 8.03 min Scan# 1945
 Delta R.T. 0.00 min
 Lab File: VN054985.D
 Acq: 11 Apr 2019 18:57

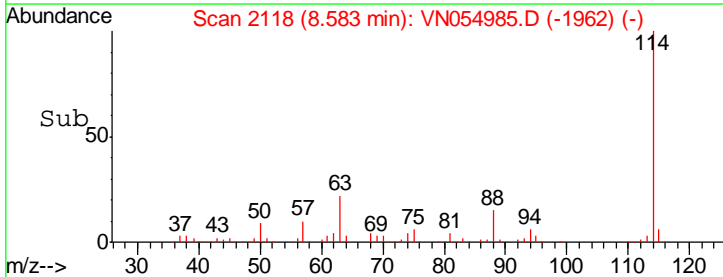
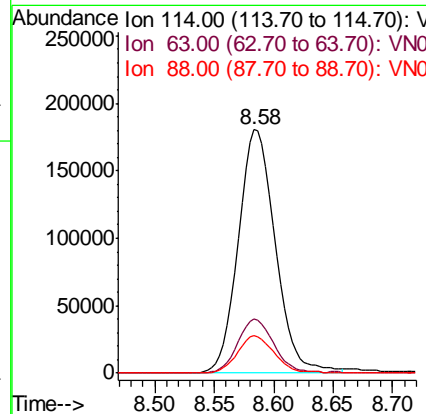
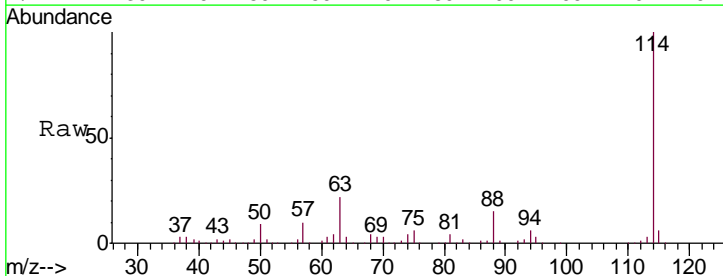
Instrument : MSVOA_N
 ClientSampled : SPDES-1

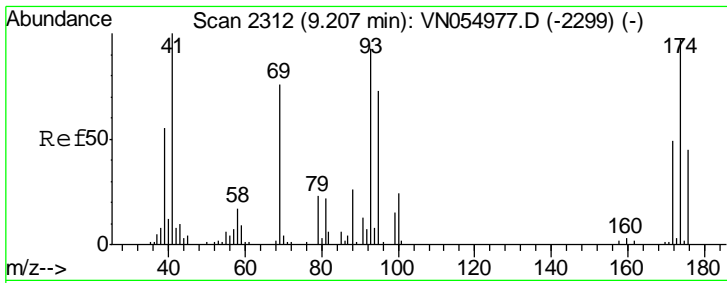
Tgt Ion: 65 Resp: 169776
 Ion Ratio Lower Upper
 65 100
 67 54.2 41.8 62.8



#28
 1,4-Difluorobenzene
 Concen: 30.000 ug/l
 RT: 8.58 min Scan# 2118
 Delta R.T. 0.00 min
 Lab File: VN054985.D
 Acq: 11 Apr 2019 18:57

Tgt Ion: 114 Resp: 390881
 Ion Ratio Lower Upper
 114 100
 63 21.8 17.0 25.4
 88 15.2 12.3 18.5

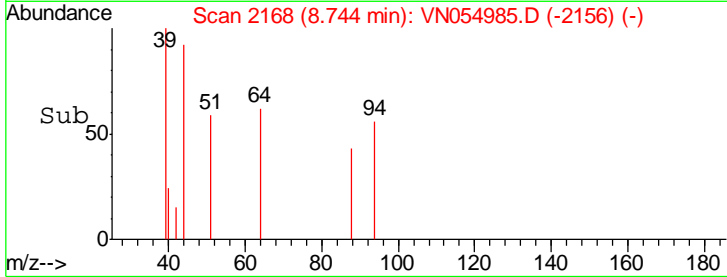
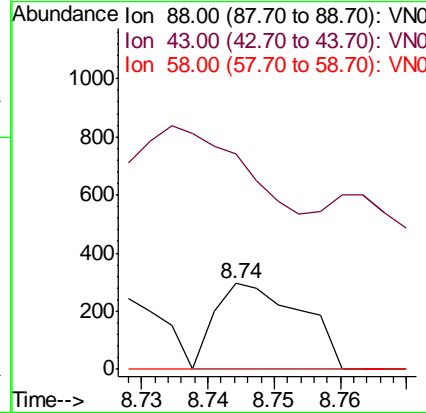
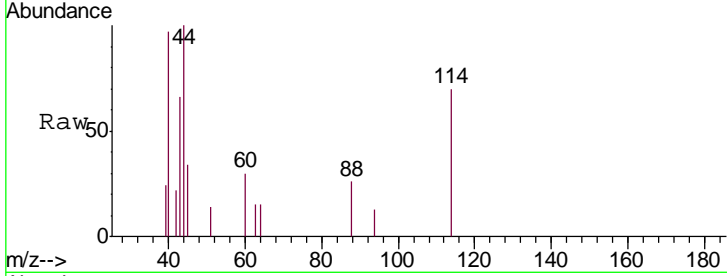




#45
 1,4-Dioxane
 Concen: 6.908 ug/l
 RT: 8.74 min Scan# 2168
 Delta R.T. -0.46 min
 Lab File: VN054985.D
 Acq: 11 Apr 2019 18:57

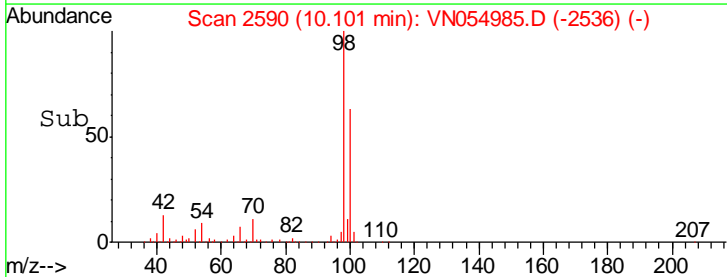
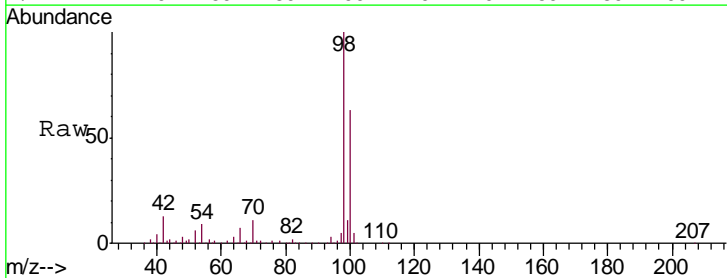
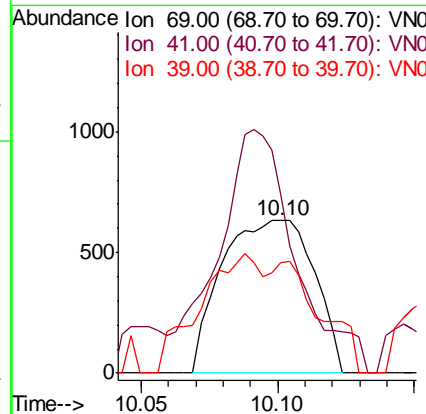
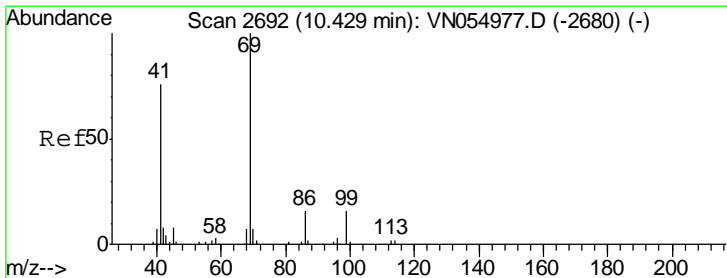
Instrument :
 MSVOA_N
 ClientSampled :
 SPDES-1

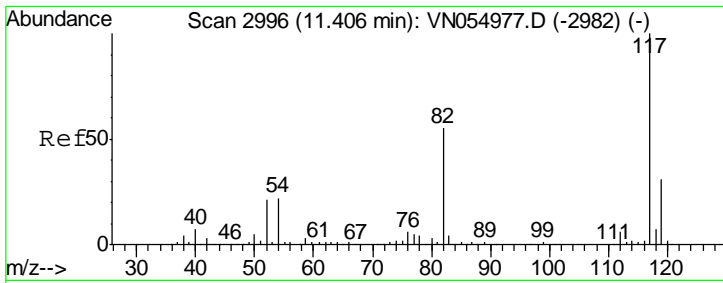
Tgt Ion	Resp	Lower	Upper
88	267		
88	100		
43	103.0	34.5	51.7#
58	0.0	60.3	90.5#



#51
 Ethyl methacrylate
 Concen: 0.326 ug/l
 RT: 10.10 min Scan# 2590
 Delta R.T. -0.33 min
 Lab File: VN054985.D
 Acq: 11 Apr 2019 18:57

Tgt Ion	Resp	Lower	Upper
69	1487		
69	100		
41	90.0	37.9	113.7
39	41.4	19.8	59.4

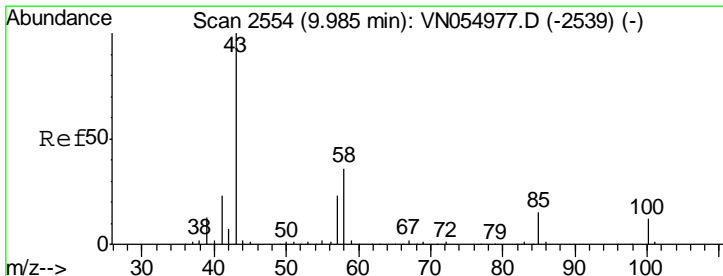
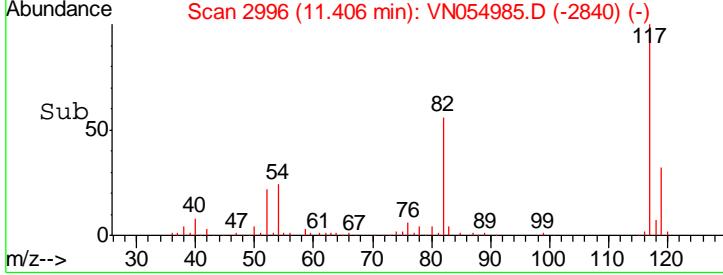
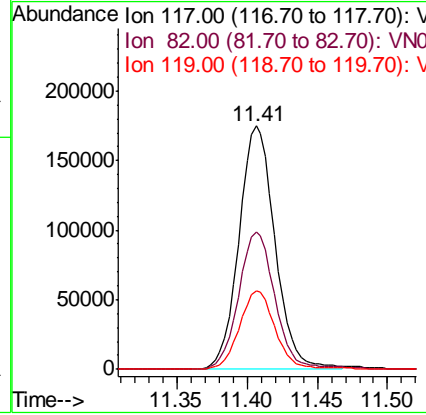
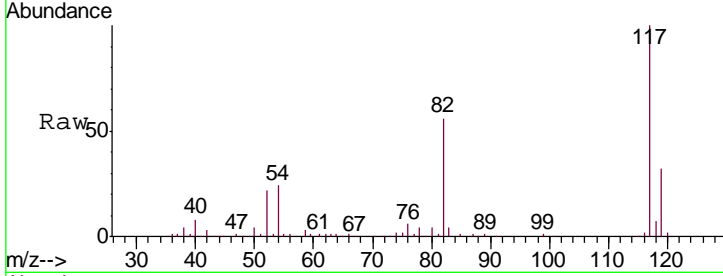




#57
 Chlorobenzene-d5
 Concen: 30.000 ug/l
 RT: 11.41 min Scan# 2996
 Delta R.T. 0.00 min
 Lab File: VN054985.D
 Acq: 11 Apr 2019 18:57

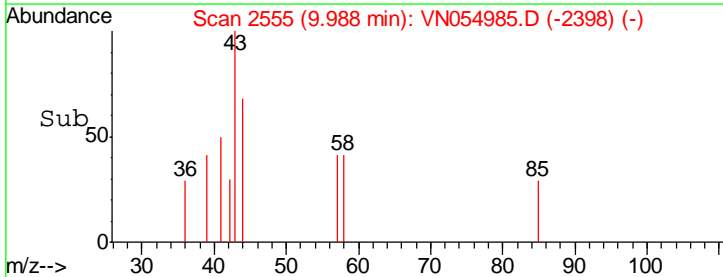
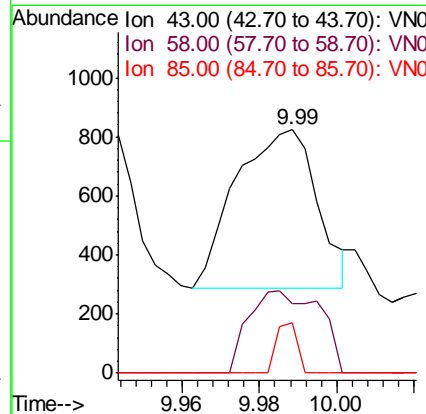
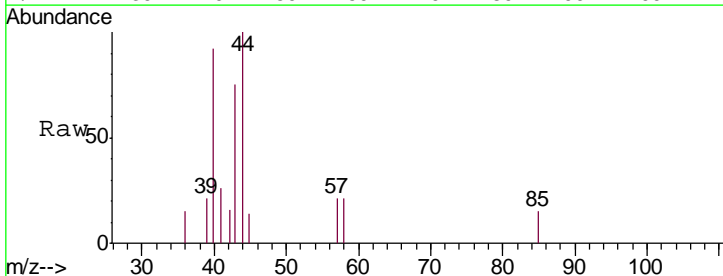
Instrument :
 MSVOA_N
 ClientSampled :
 SPDES-1

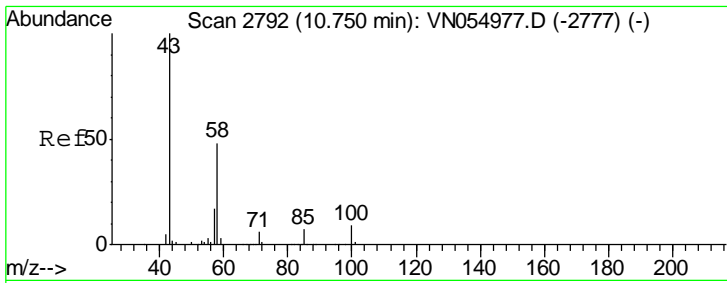
Tgt Ion	Resp	Lower	Upper
117	313711		
82	56.4	45.2	67.8
119	31.6	25.4	38.2



#58
 4-Methyl-2-Pentanone
 Concen: 0.216 ug/l
 RT: 9.99 min Scan# 2555
 Delta R.T. 0.00 min
 Lab File: VN054985.D
 Acq: 11 Apr 2019 18:57

Tgt Ion	Resp	Lower	Upper
43	781		
58	28.8	28.7	43.1
85	8.1	11.8	17.6#



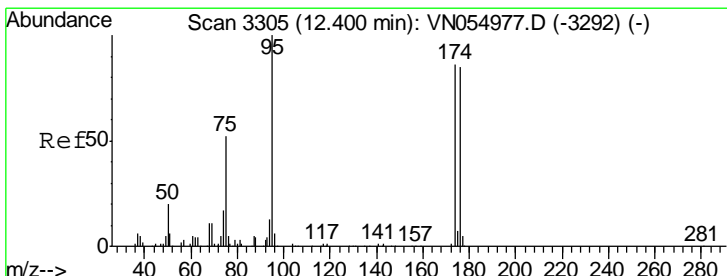
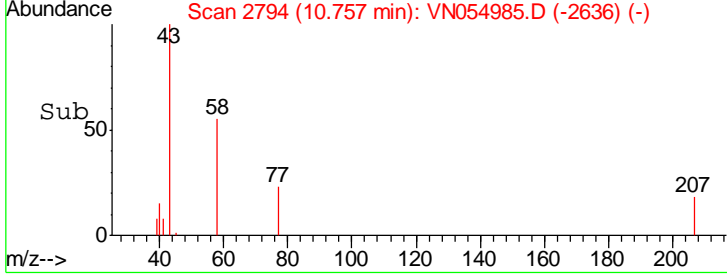
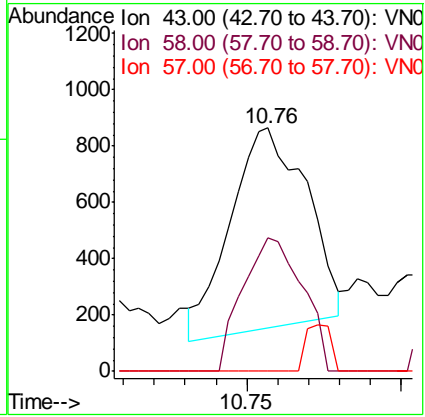
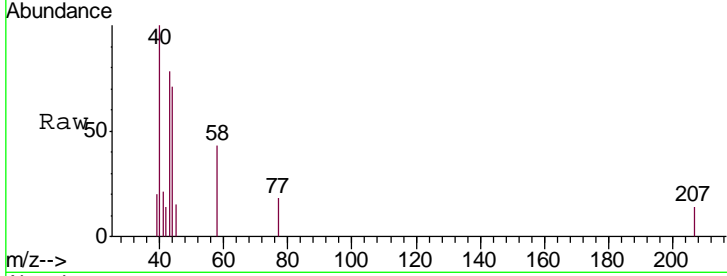


#59
 2-Hexanone
 Concen: 0.532 ug/l
 RT: 10.76 min Scan# 2794
 Delta R.T. 0.01 min
 Lab File: VN054985.D
 Acq: 11 Apr 2019 18:57

Instrument : MSVOA_N
 ClientSampled : SPDES-1

Tgt Ion: 43 Resp: 1222

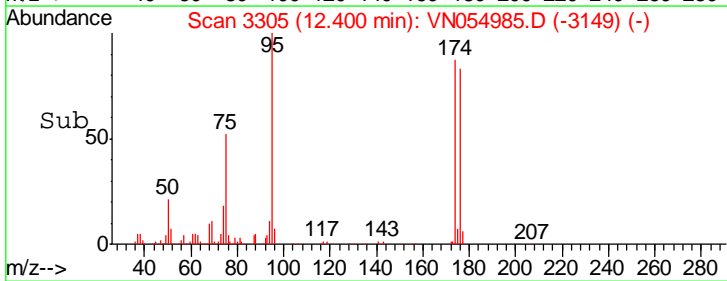
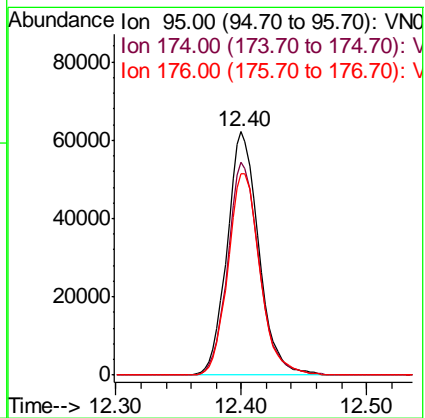
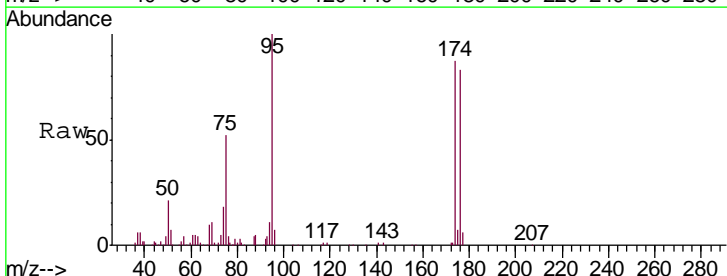
Ion	Ratio	Lower	Upper
43	100		
58	52.3	38.8	58.2
57	0.0	13.8	20.6#

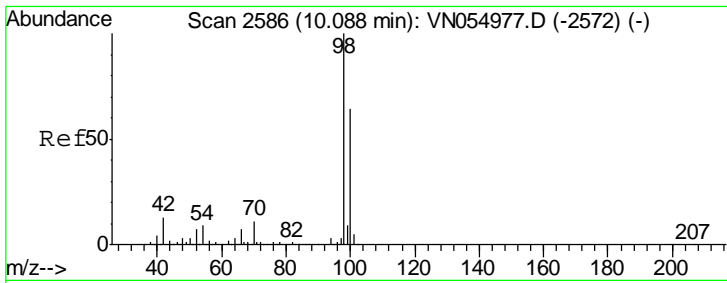


#60
 4-Bromofluorobenzene
 Concen: 0.532 ug/l
 RT: 12.40 min Scan# 3305
 Delta R.T. 0.00 min
 Lab File: VN054985.D
 Acq: 11 Apr 2019 18:57

Tgt Ion: 95 Resp: 109013

Ion	Ratio	Lower	Upper
95	100		
174	87.0	69.4	104.2
176	83.6	67.4	101.2

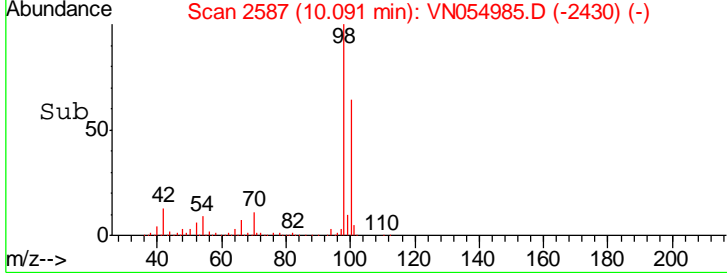
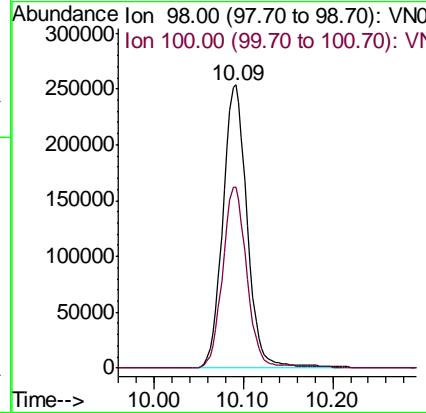
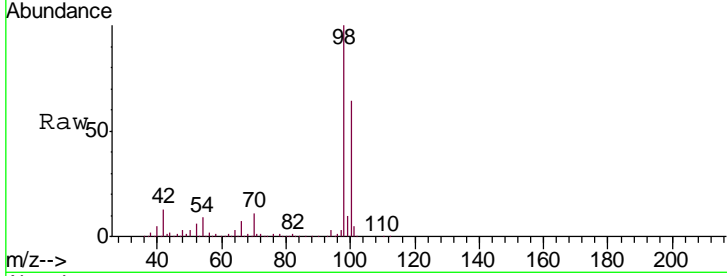




#63
 Toluene-d8
 Concen: Below ug/l
 RT: 10.09 min Scan# 2587
 Delta R.T. 0.00 min
 Lab File: VN054985.D
 Acq: 11 Apr 2019 18:57

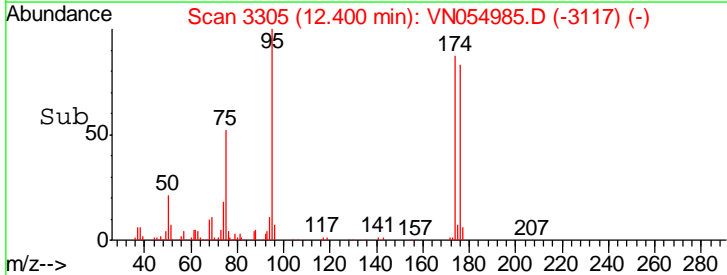
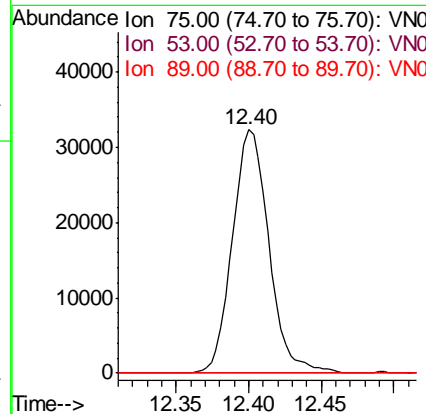
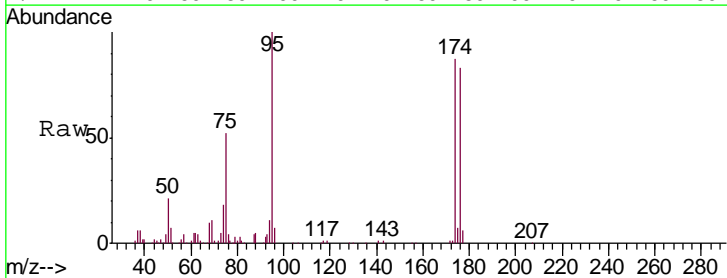
Instrument : MSVOA_N
 ClientSampled : SPDES-1

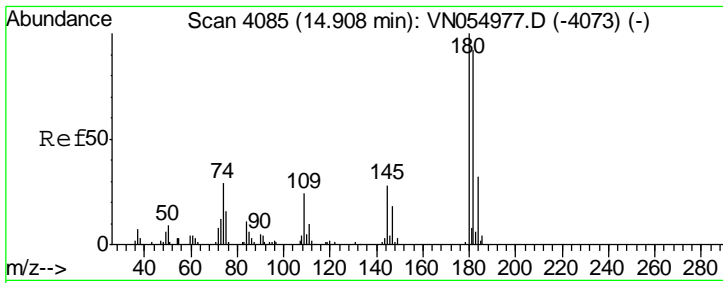
Tgt Ion	Resp	Ion Ratio	Lower	Upper
98	479707	100		
100		62.9	51.1	76.7



#77
 t-1,4-Dichloro-2-butene
 Concen: 65.255 ug/l
 RT: 12.40 min Scan# 3305
 Delta R.T. 0.10 min
 Lab File: VN054985.D
 Acq: 11 Apr 2019 18:57

Tgt Ion	Resp	Ion Ratio	Lower	Upper
75	56539	100		
53		0.0	64.3	192.7#
89		0.0	21.6	65.0#

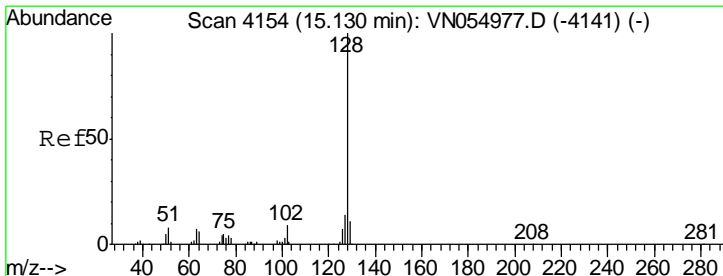
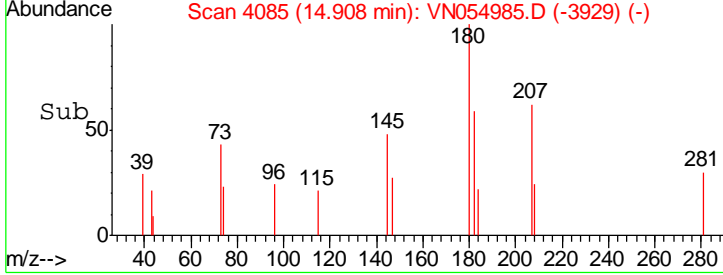
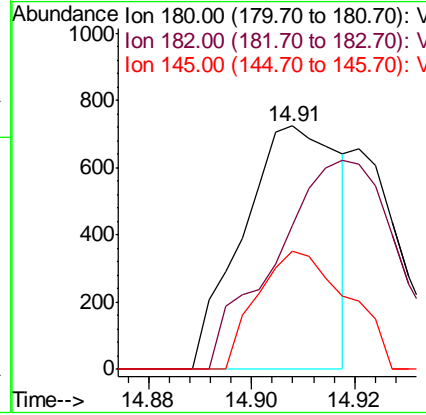
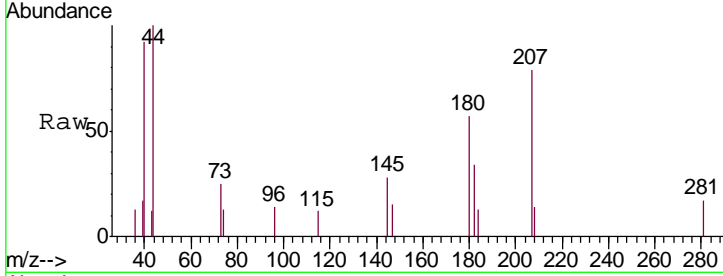




#89
 1,2,4-Trichlorobenzene
 Concen: 0.297 ug/l
 RT: 14.91 min Scan# 4085
 Delta R.T. 0.00 min
 Lab File: VN054985.D
 Acq: 11 Apr 2019 18:57

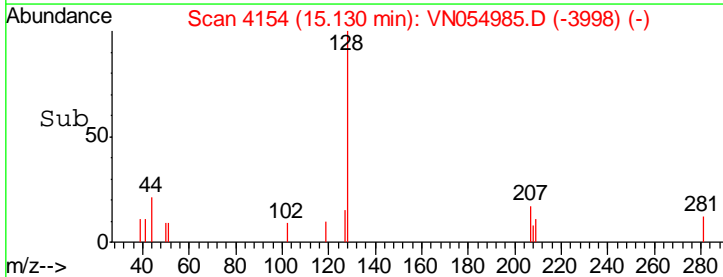
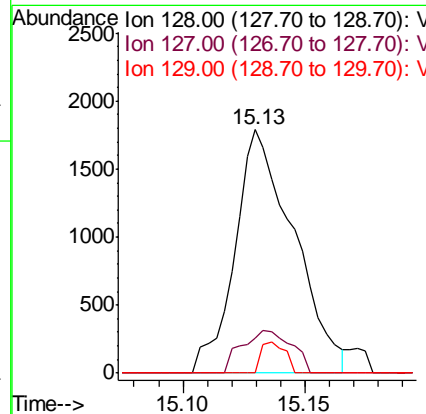
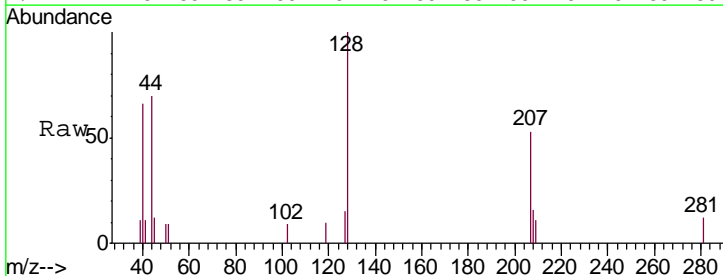
Instrument :
 MSVOA_N
 ClientSampled :
 SPDES-1

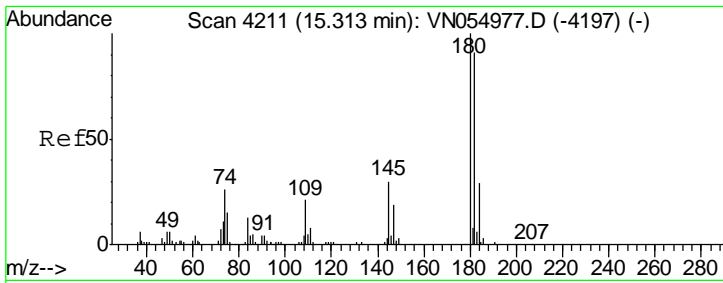
Tgt Ion	Resp	Lower	Upper
180	100		
182	105.8	73.2	109.8
145	45.7	23.2	34.8#



#91
 Naphthalene
 Concen: 0.454 ug/l
 RT: 15.13 min Scan# 4154
 Delta R.T. 0.00 min
 Lab File: VN054985.D
 Acq: 11 Apr 2019 18:57

Tgt Ion	Resp	Lower	Upper
128	100		
127	14.7	10.6	15.8
129	5.0	9.0	13.6#





#92
 1,2,3-Trichlorobenzene
 Concen: 0.394 ug/l
 RT: 15.31 min Scan# 4211
 Delta R.T. 0.00 min
 Lab File: VN054985.D
 Acq: 11 Apr 2019 18:57

Instrument :
 MSVOA_N
 ClientSampled :
 SPDES-1

Tgt Ion	Resp	Lower	Upper
180	1240		
180	100		
182	120.2	0.0	188.2
145	13.2	0.0	61.2

