

Data Path : Z:\voasrv\HPCHEM1\MSVOA\_N\Data\VN041123\  
 Data File : VN077296.D  
 Acq On : 11 Apr 2023 11:47  
 Operator : JC\MD  
 Sample : PB151999TB  
 Misc : 5.0mL/MSVOA\_N/WATER  
 ALS Vial : 7 Sample Multiplier: 1

Instrument :  
 MSVOA\_N  
 ClientSampleId :  
 PB151999TB

Quant Time: Apr 12 04:38:43 2023  
 Quant Method : Z:\voasrv\HPCHEM1\MSVOA\_N\methods\82N040523W.M  
 Quant Title : SW846 8260  
 QLast Update : Thu Apr 06 08:27:03 2023  
 Response via : Initial Calibration

Compound	R.T.	QIon	Response	Conc	Units	Dev(Min)
Internal Standards						
1) Pentafluorobenzene	8.231	168	468228	50.000	ug/l	0.00
34) 1,4-Difluorobenzene	9.101	114	923895	50.000	ug/l	0.00
63) Chlorobenzene-d5	11.872	117	863521	50.000	ug/l	0.00
72) 1,4-Dichlorobenzene-d4	13.795	152	308150	50.000	ug/l	0.00
System Monitoring Compounds						
33) 1,2-Dichloroethane-d4	8.584	65	303178	47.376	ug/l	0.00
Spiked Amount	50.000	Range	74 - 125	Recovery	=	94.760%
35) Dibromofluoromethane	8.172	113	279375	47.236	ug/l	0.00
Spiked Amount	50.000	Range	75 - 124	Recovery	=	94.480%
50) Toluene-d8	10.572	98	1151397	48.358	ug/l	0.00
Spiked Amount	50.000	Range	86 - 113	Recovery	=	96.720%
62) 4-Bromofluorobenzene	12.854	95	395917	49.997	ug/l	0.00
Spiked Amount	50.000	Range	83 - 123	Recovery	=	100.000%
Target Compounds						
						Qvalue
3) Chloromethane	2.372	50	1929	0.260	ug/l #	74
5) Bromomethane	2.978	94	4924	0.676	ug/l #	65
10) Methyl Iodide	4.613	142	3099	0.478	ug/l #	77
11) Tert butyl alcohol	5.525	59	401	0.307	ug/l #	1
13) Acrolein	4.202	56	1022	0.826	ug/l	90
15) Acrylonitrile	5.743	53	608	0.211	ug/l #	31
16) Acetone	4.443	43	54314	23.019	ug/l	97
17) Carbon Disulfide	4.731	76	3072	0.208	ug/l #	75
18) Methyl Acetate	5.043	43	3597	0.400	ug/l #	78
20) Methylene Chloride	5.284	84	56019	8.407	ug/l	97
25) 2-Butanone	7.507	43	7701	2.011	ug/l	93
29) Tetrahydrofuran	7.854	42	2211	0.898	ug/l #	70
31) Cyclohexane	8.225	56	11125	1.119	ug/l #	20
36) 1,1-Dichloropropene	8.225	75	40255	4.602	ug/l #	50
37) Ethyl Acetate	7.566	43	96943	12.386	ug/l	97
38) Carbon Tetrachloride	8.231	117	53006	5.914	ug/l #	14
42) 1,2-Dichloroethane	8.684	62	2961	0.353	ug/l #	73
43) Isopropyl Acetate	8.689	43	450688	31.207	ug/l #	92
48) Methyl methacrylate	9.666	41	10751	1.745	ug/l #	35
49) 1,4-Dioxane	9.689	88	403	2.698	ug/l #	1
51) 4-Methyl-2-Pentanone	10.454	43	21609	2.589	ug/l	98
54) cis-1,3-Dichloropropene	10.360	75	197325	17.482	ug/l #	59
57) 1,3-Dichloropropane	11.201	76	25140	2.171	ug/l #	45
59) 2-Hexanone	11.172	43	372088	59.831	ug/l #	20
68) m/p-Xylenes	12.072	106	2767	0.201	ug/l	98
74) N-amyl acetate	12.495	43	5891	0.519	ug/l #	75
76) 1,2,3-Trichloropropane	12.854	75	206225	28.104	ug/l #	1
79) 2-Chlorotoluene	13.224	91	4049	0.203	ug/l	91
81) trans-1,4-Dichloro-2-b...	12.854	75	206225	63.244	ug/l #	13
82) 4-Chlorotoluene	13.224	91	4049	0.216	ug/l	91
87) 1,3-Dichlorobenzene	13.736	146	2949	0.262	ug/l	87
88) 1,4-Dichlorobenzene	13.819	146	4824	0.434	ug/l #	24
89) n-Butylbenzene	14.066	91	5212	0.269	ug/l	96
91) 1,2-Dichlorobenzene	14.113	146	2765	0.245	ug/l	85
92) 1,2-Dibromo-3-Chloropr...	14.730	75	375	0.211	ug/l #	47
93) 1,2,4-Trichlorobenzene	15.365	180	2964	0.729	ug/l	84

Data Path : Z:\voasrv\HPCHEM1\MSVOA\_N\Data\VN041123\  
Data File : VN077296.D  
Acq On : 11 Apr 2023 11:47  
Operator : JC\MD  
Sample : PB151999TB  
Misc : 5.0mL/MSVOA\_N/WATER  
ALS Vial : 7 Sample Multiplier: 1

Instrument :  
MSVOA\_N  
ClientSampleId :  
PB151999TB

Quant Time: Apr 12 04:38:43 2023  
Quant Method : Z:\voasrv\HPCHEM1\MSVOA\_N\methods\82N040523W.M  
Quant Title : SW846 8260  
QLast Update : Thu Apr 06 08:27:03 2023  
Response via : Initial Calibration

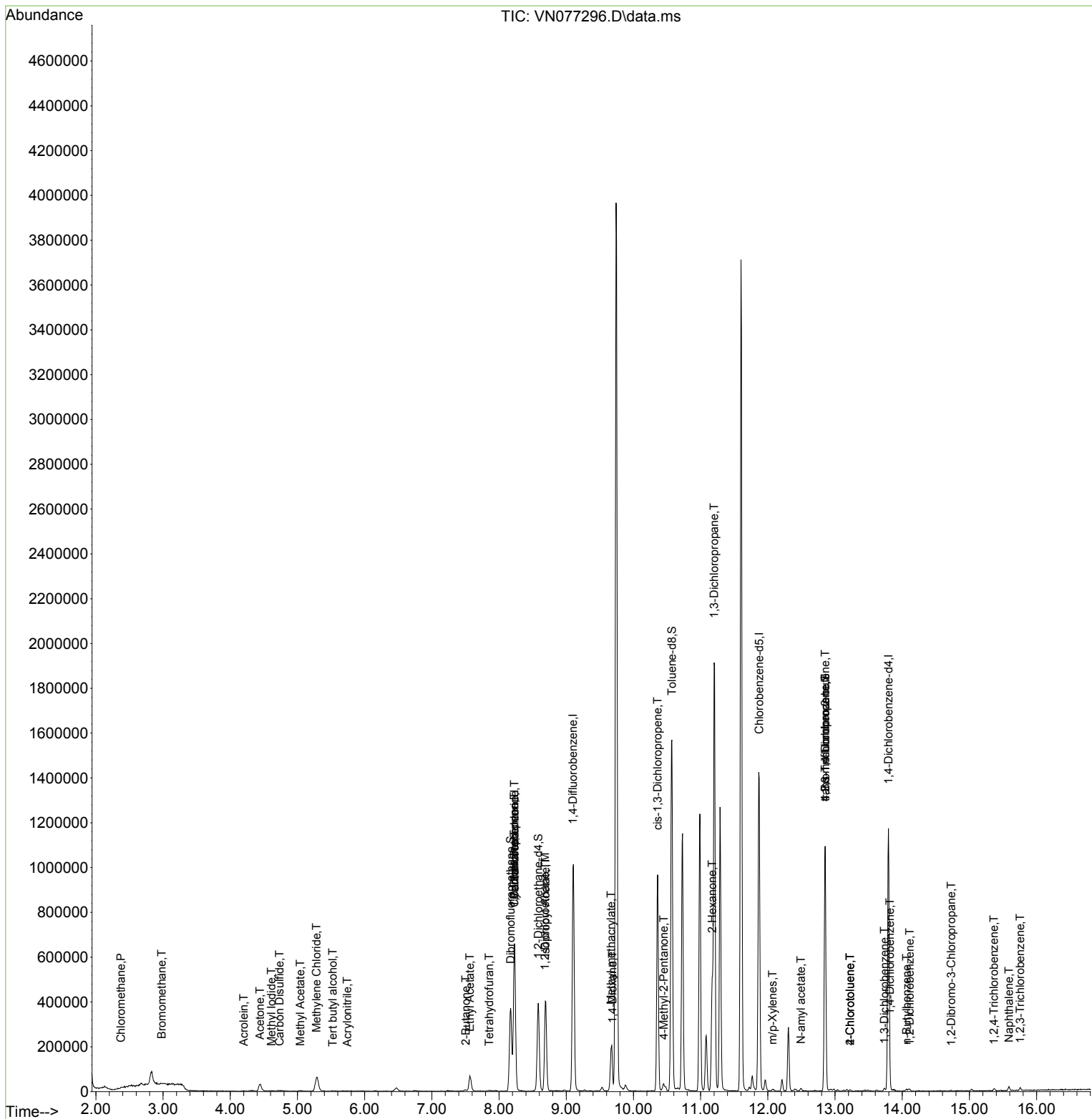
Compound	R.T.	QIon	Response	Conc	Units	Dev(Min)
95) Naphthalene	15.589	128	14130	0.925	ug/l #	93
96) 1,2,3-Trichlorobenzene	15.754	180	3196	0.822	ug/l	84

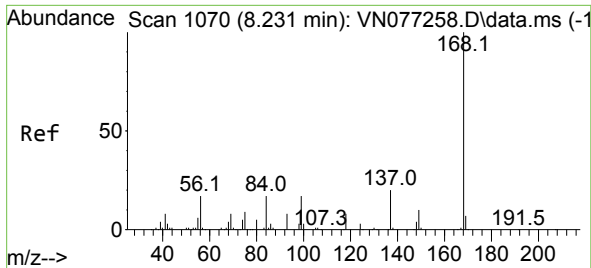
(#) = qualifier out of range (m) = manual integration (+) = signals summed

Data Path : Z:\voasrv\HPCHEM1\MSVOA\_N\Data\VN041123\  
 Data File : VN077296.D  
 Acq On : 11 Apr 2023 11:47  
 Operator : JC\MD  
 Sample : PB151999TB  
 Misc : 5.0mL/MSVOA\_N/WATER  
 ALS Vial : 7 Sample Multiplier: 1

Instrument :  
 MSVOA\_N  
 ClientSampleId :  
 PB151999TB

Quant Time: Apr 12 04:38:43 2023  
 Quant Method : Z:\voasrv\HPCHEM1\MSVOA\_N\methods\82N040523W.M  
 Quant Title : SW846 8260  
 QLast Update : Thu Apr 06 08:27:03 2023  
 Response via : Initial Calibration

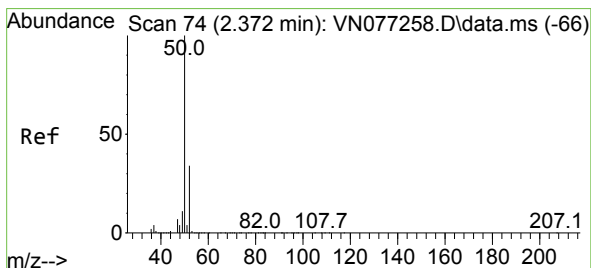
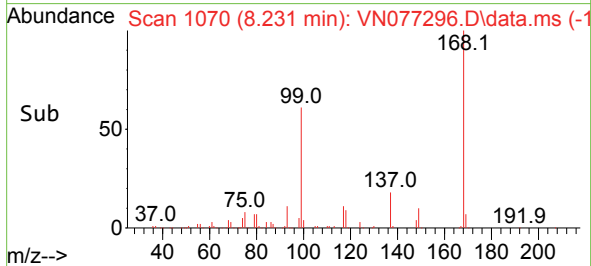
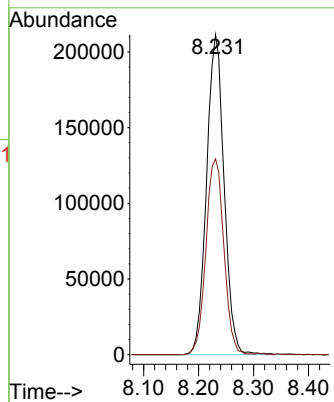
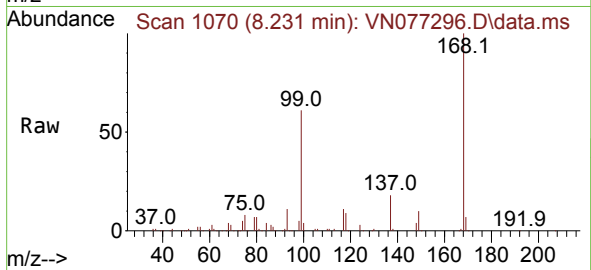




#1  
 Pentafluorobenzene  
 Concen: 50.000 ug/l  
 RT: 8.231 min Scan# 10  
 Delta R.T. -0.000 min  
 Lab File: VN077296.D  
 Acq: 11 Apr 2023 11:47

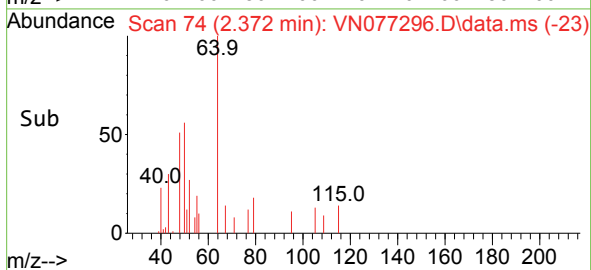
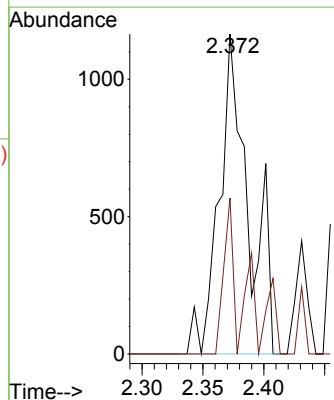
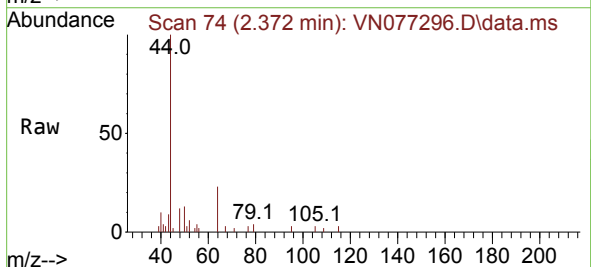
Instrument :  
 MSVOA\_N  
 ClientSampleId :  
 PB151999TB

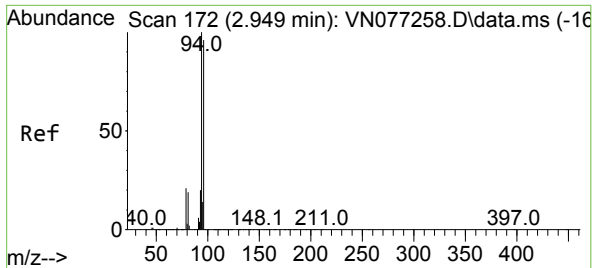
Tgt Ion:168 Resp: 468228  
 Ion Ratio Lower Upper  
 168 100  
 99 61.2 50.6 75.8



#3  
 Chloromethane  
 Concen: 0.260 ug/l  
 RT: 2.372 min Scan# 74  
 Delta R.T. 0.000 min  
 Lab File: VN077296.D  
 Acq: 11 Apr 2023 11:47

Tgt Ion: 50 Resp: 1929  
 Ion Ratio Lower Upper  
 50 100  
 52 48.8 27.3 40.9#

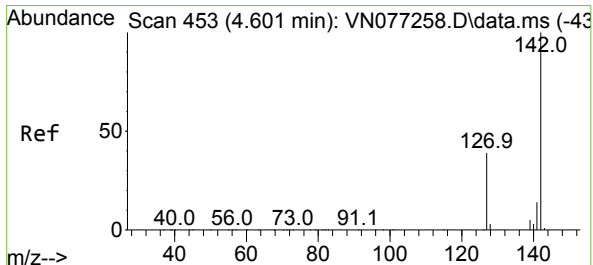
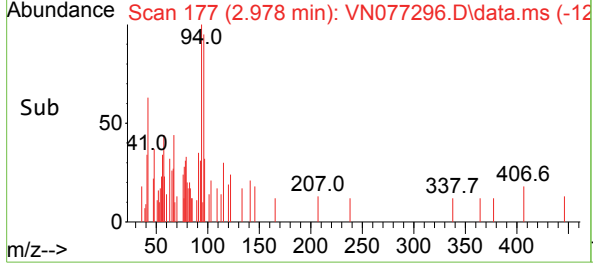
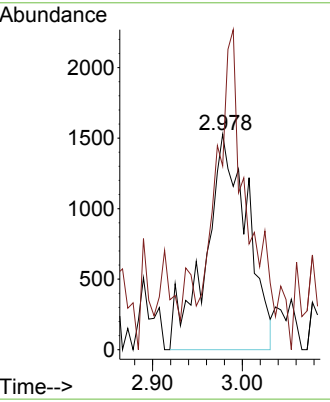
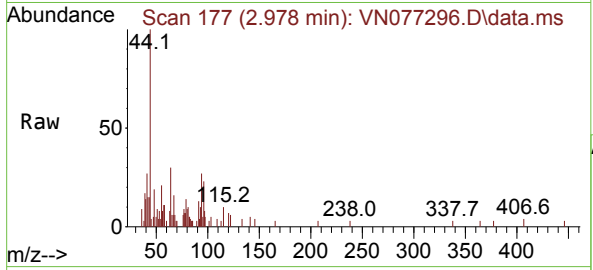




#5  
 Bromomethane  
 Concen: 0.676 ug/l  
 RT: 2.978 min Scan# 11  
 Delta R.T. 0.029 min  
 Lab File: VN077296.D  
 Acq: 11 Apr 2023 11:47

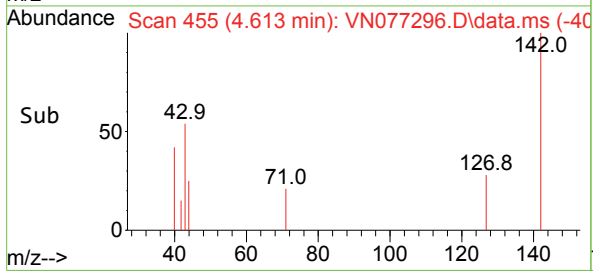
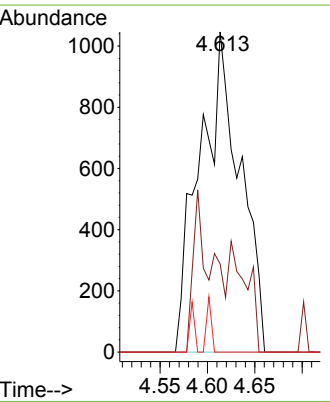
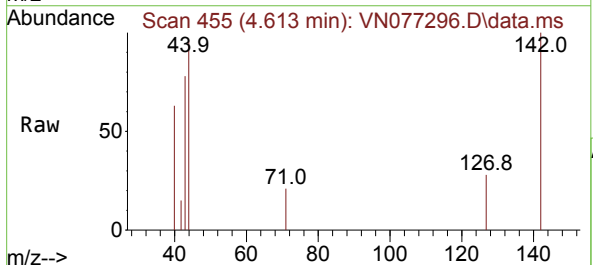
Instrument : MSVOA\_N  
 ClientSampleId : PB151999TB

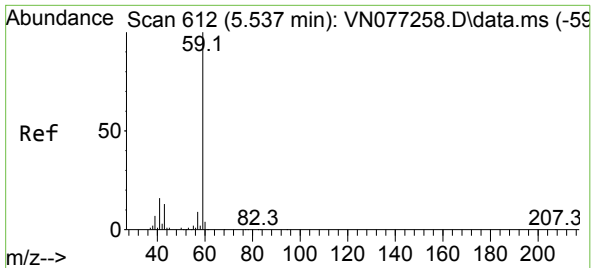
Tgt Ion: 94 Resp: 4924  
 Ion Ratio Lower Upper  
 94 100  
 96 62.1 77.0 115.4#



#10  
 Methyl Iodide  
 Concen: 0.478 ug/l  
 RT: 4.613 min Scan# 455  
 Delta R.T. 0.012 min  
 Lab File: VN077296.D  
 Acq: 11 Apr 2023 11:47

Tgt Ion: 142 Resp: 3099  
 Ion Ratio Lower Upper  
 142 100  
 127 27.5 31.5 47.3#  
 141 0.0 11.4 17.2#

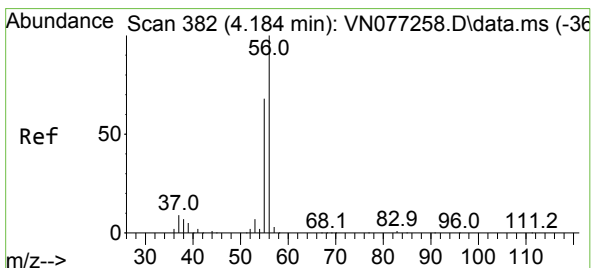
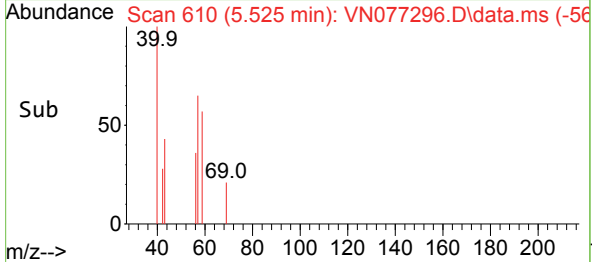
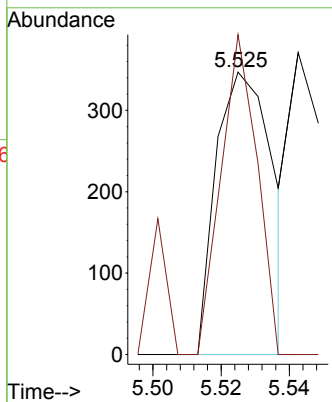
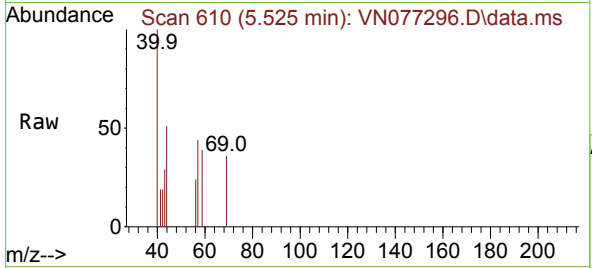




#11  
 Tert butyl alcohol  
 Concen: 0.307 ug/l  
 RT: 5.525 min Scan# 611  
 Delta R.T. -0.012 min  
 Lab File: VN077296.D  
 Acq: 11 Apr 2023 11:47

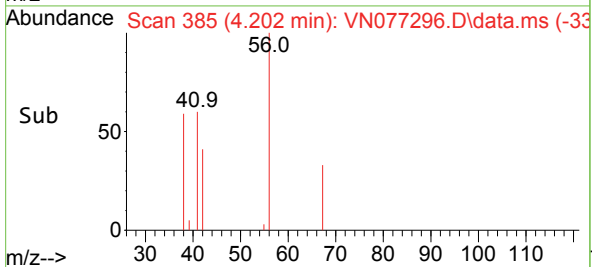
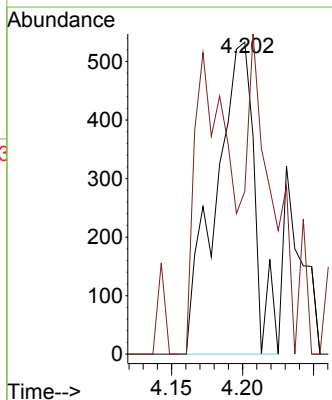
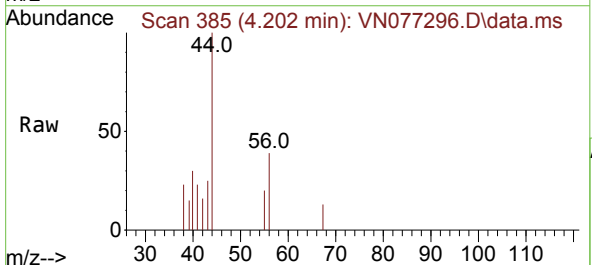
Instrument : MSVOA\_N  
 ClientSampleId : PB151999TB

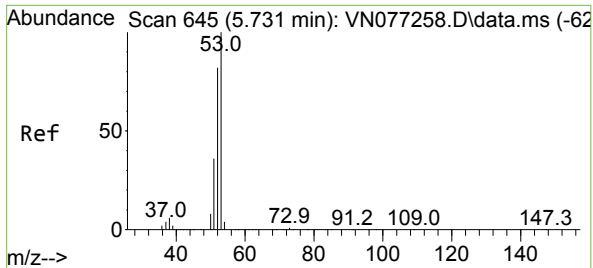
Tgt Ion: 59 Resp: 401  
 Ion Ratio Lower Upper  
 59 100  
 57 72.3 8.3 12.5#



#13  
 Acrolein  
 Concen: 0.826 ug/l  
 RT: 4.202 min Scan# 385  
 Delta R.T. 0.018 min  
 Lab File: VN077296.D  
 Acq: 11 Apr 2023 11:47

Tgt Ion: 56 Resp: 1022  
 Ion Ratio Lower Upper  
 56 100  
 55 75.5 54.2 81.2

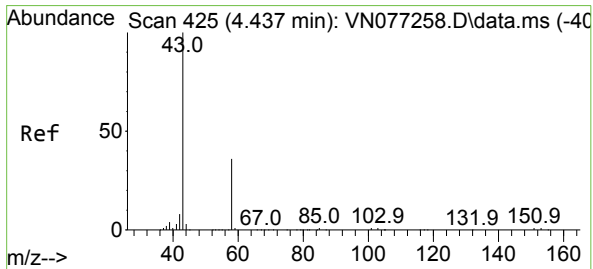
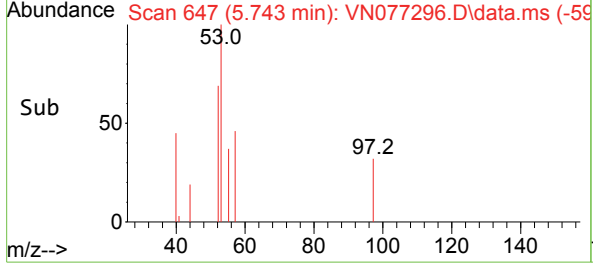
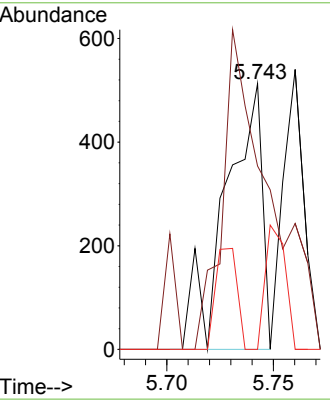
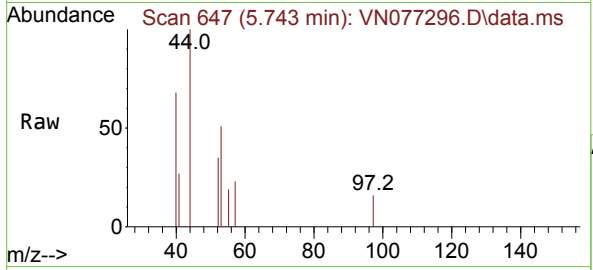




#15  
 Acrylonitrile  
 Concen: 0.211 ug/l  
 RT: 5.743 min Scan# 64  
 Delta R.T. 0.012 min  
 Lab File: VN077296.D  
 Acq: 11 Apr 2023 11:47

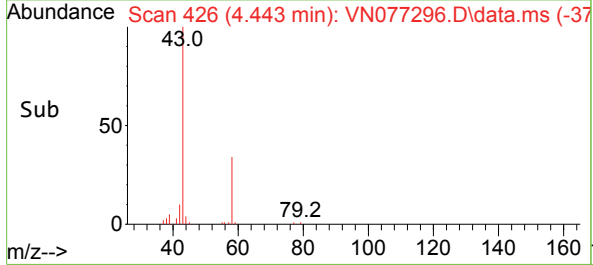
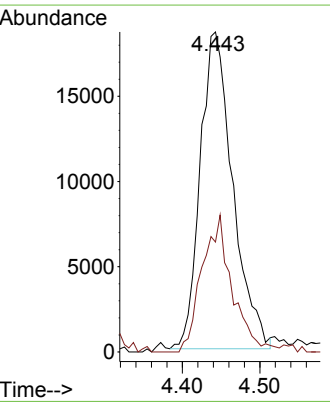
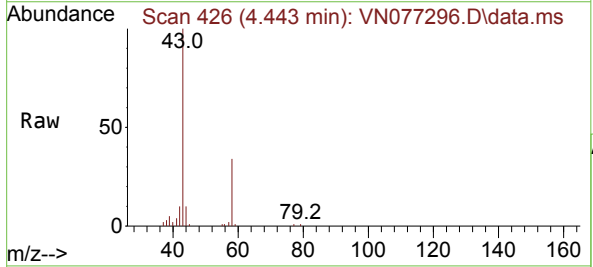
Instrument : MSVOA\_N  
 ClientSampleId : PB151999TB

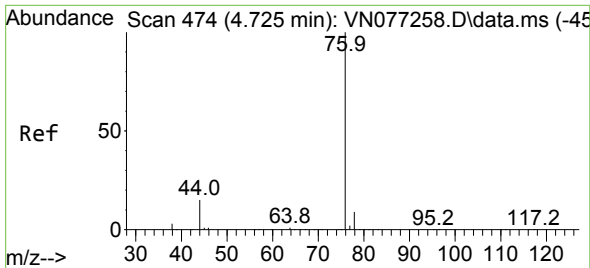
Tgt Ion	Resp	Lower	Upper
53	100		
52	0.0	65.2	97.8#
51	25.8	28.1	42.1#



#16  
 Acetone  
 Concen: 23.019 ug/l  
 RT: 4.443 min Scan# 426  
 Delta R.T. 0.006 min  
 Lab File: VN077296.D  
 Acq: 11 Apr 2023 11:47

Tgt Ion	Resp	Lower	Upper
43	100		
58	34.7	29.0	43.6

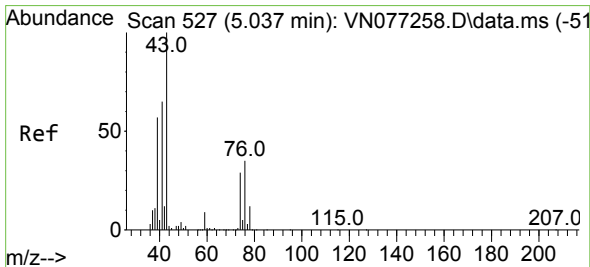
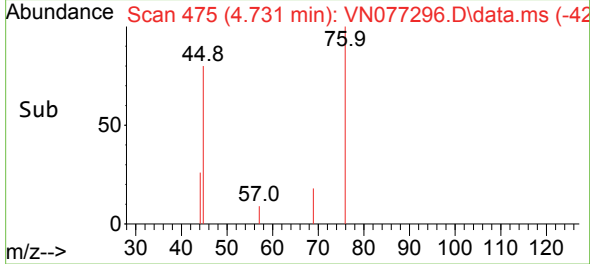
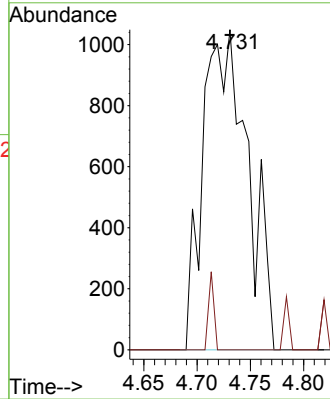
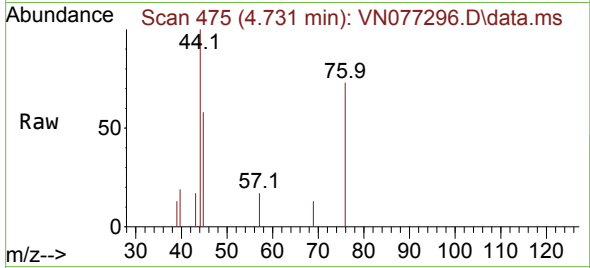




#17  
 Carbon Disulfide  
 Concen: 0.208 ug/l  
 RT: 4.731 min Scan# 41  
 Delta R.T. 0.006 min  
 Lab File: VN077296.D  
 Acq: 11 Apr 2023 11:47

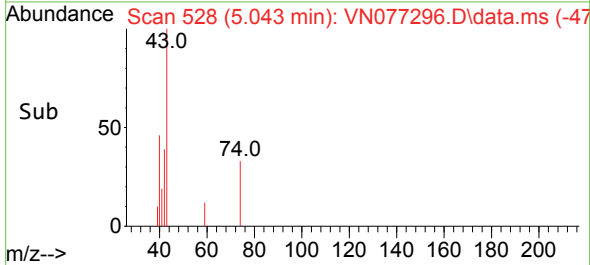
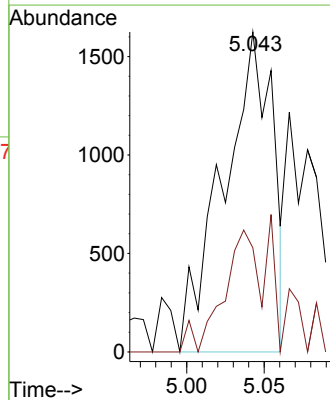
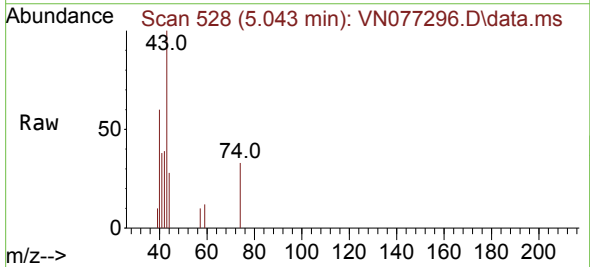
Instrument : MSVOA\_N  
 ClientSampleId : PB151999TB

Tgt Ion: 76 Resp: 3072  
 Ion Ratio Lower Upper  
 76 100  
 78 0.0 7.3 10.9#

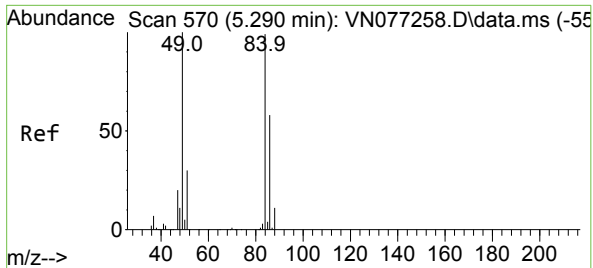


#18  
 Methyl Acetate  
 Concen: 0.400 ug/l  
 RT: 5.043 min Scan# 528  
 Delta R.T. 0.006 min  
 Lab File: VN077296.D  
 Acq: 11 Apr 2023 11:47

Tgt Ion: 43 Resp: 3597  
 Ion Ratio Lower Upper  
 43 100  
 74 41.3 23.4 35.2#

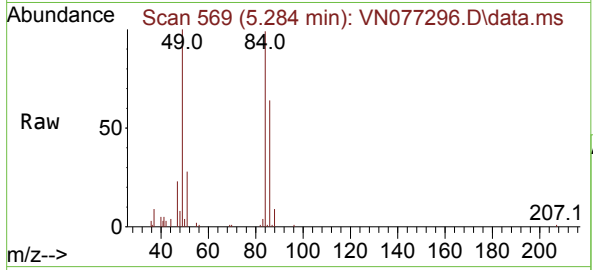






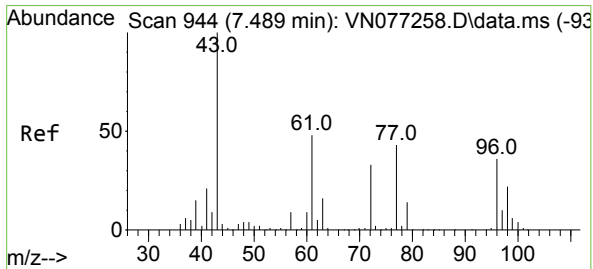
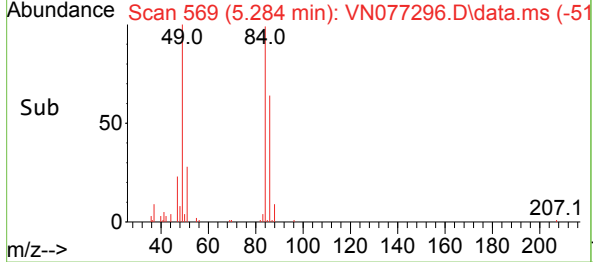
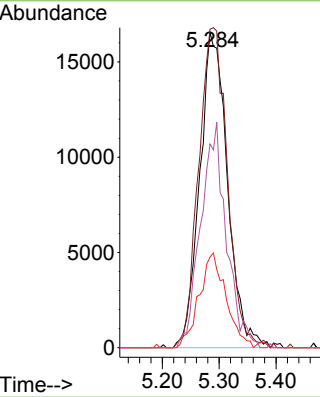
#20  
 Methylene Chloride  
 Concen: 8.407 ug/l  
 RT: 5.284 min Scan# 501  
 Delta R.T. -0.006 min  
 Lab File: VN077296.D  
 Acq: 11 Apr 2023 11:47

Instrument : MSVOA\_N  
 ClientSampleId : PB151999TB



Tgt Ion: 84 Resp: 56019

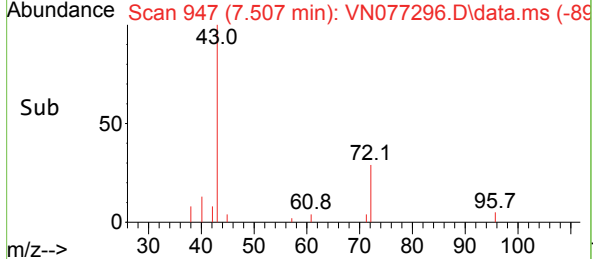
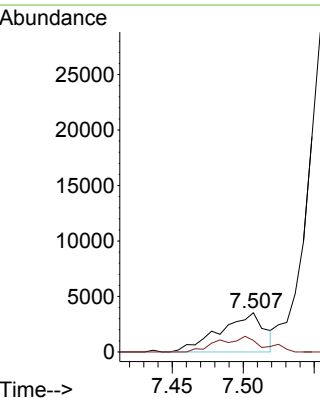
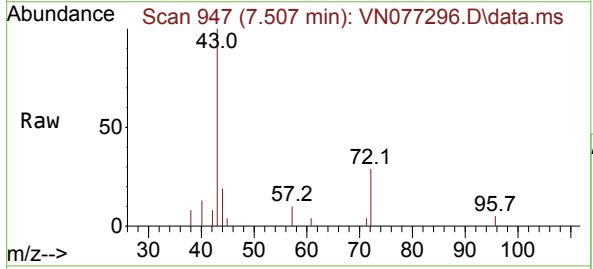
Ion	Ratio	Lower	Upper
84	100		
49	101.1	80.6	121.0
51	28.7	24.4	36.6
86	64.6	47.0	70.6

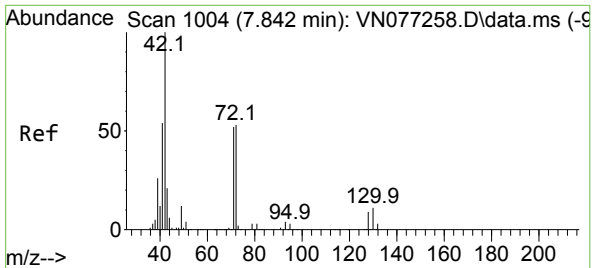


#25  
 2-Butanone  
 Concen: 2.011 ug/l  
 RT: 7.507 min Scan# 947  
 Delta R.T. 0.018 min  
 Lab File: VN077296.D  
 Acq: 11 Apr 2023 11:47

Tgt Ion: 43 Resp: 7701

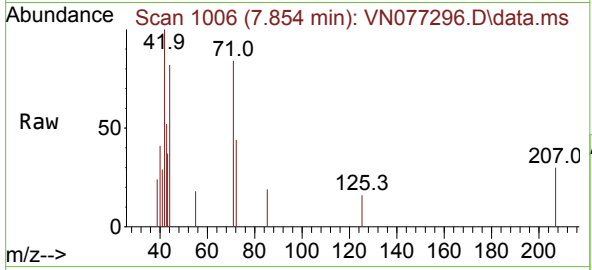
Ion	Ratio	Lower	Upper
43	100		
72	29.5	26.6	39.8



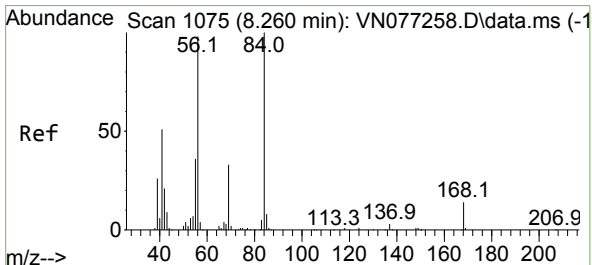
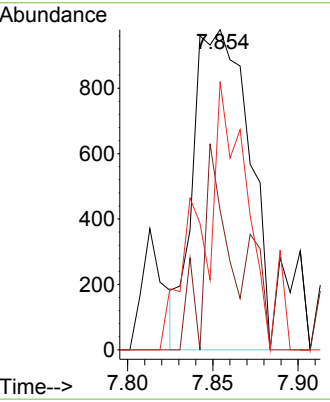
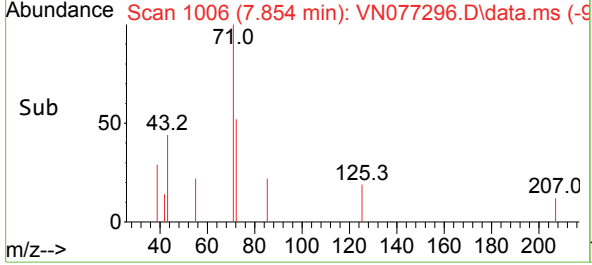


#29  
 Tetrahydrofuran  
 Concen: 0.898 ug/l  
 RT: 7.854 min Scan# 1006  
 Delta R.T. 0.012 min  
 Lab File: VN077296.D  
 Acq: 11 Apr 2023 11:47

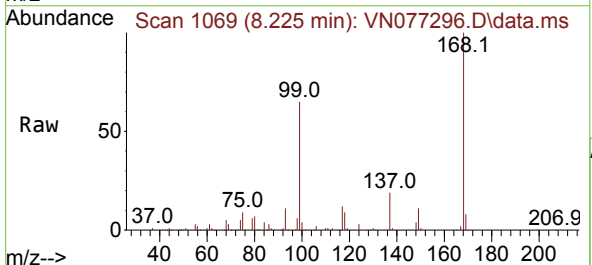
Instrument : MSVOA\_N  
 ClientSampleId : PB151999TB



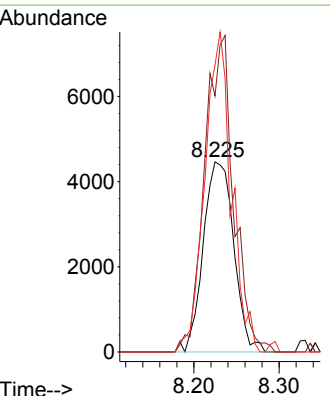
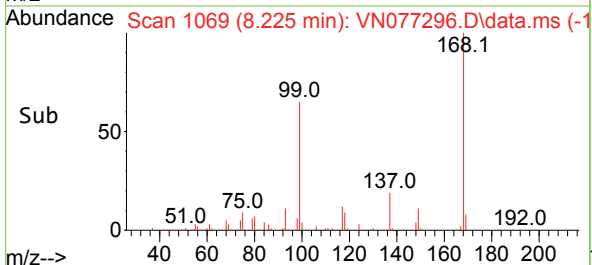
Tgt Ion	Resp	Ion Ratio	Lower	Upper
42	2211	100		
72		28.2	44.6	66.8#
71		66.4	41.3	61.9#

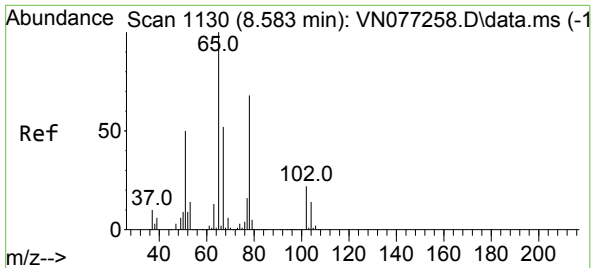


#31  
 Cyclohexane  
 Concen: 1.119 ug/l  
 RT: 8.225 min Scan# 1069  
 Delta R.T. -0.035 min  
 Lab File: VN077296.D  
 Acq: 11 Apr 2023 11:47



Tgt Ion	Resp	Ion Ratio	Lower	Upper
56	11125	100		
69		134.6	26.6	40.0#
84		150.9	81.8	122.8#

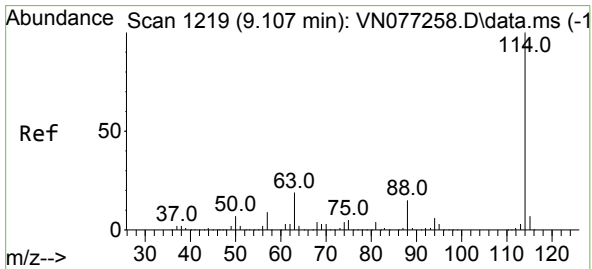
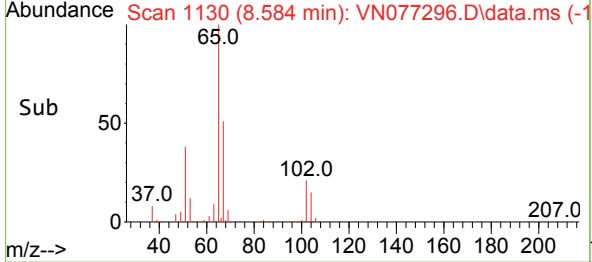
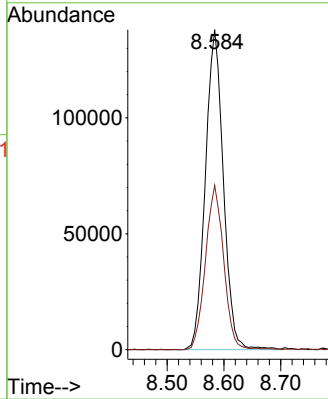
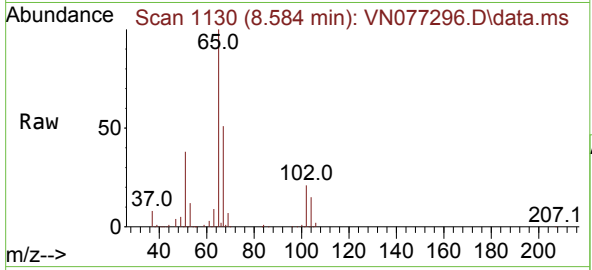




#33  
 1,2-Dichloroethane-d4  
 Concen: 47.376 ug/l  
 RT: 8.584 min Scan# 1130  
 Delta R.T. 0.001 min  
 Lab File: VN077296.D  
 Acq: 11 Apr 2023 11:47

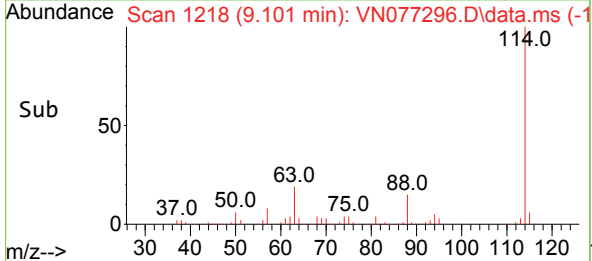
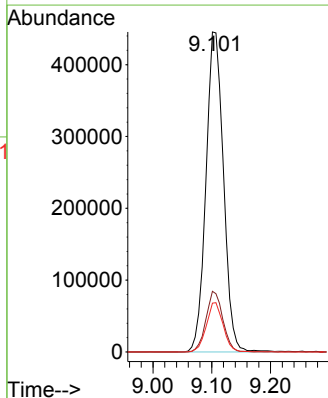
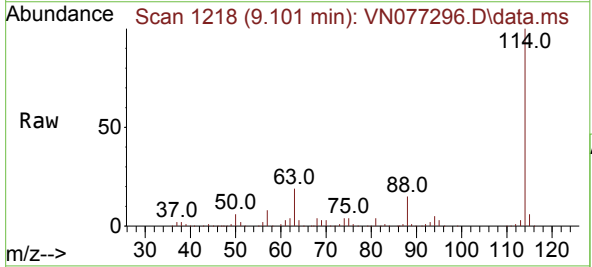
Instrument : MSVOA\_N  
 ClientSampleId : PB151999TB

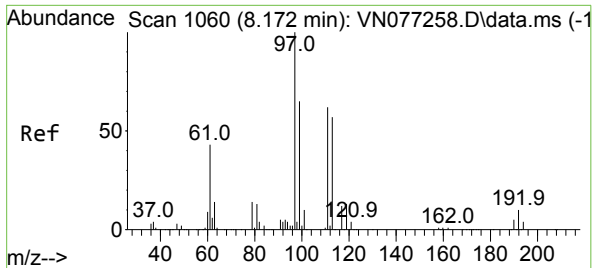
Tgt Ion: 65 Resp: 303178  
 Ion Ratio Lower Upper  
 65 100  
 67 51.7 0.0 108.8



#34  
 1,4-Difluorobenzene  
 Concen: 50.000 ug/l  
 RT: 9.101 min Scan# 1218  
 Delta R.T. -0.006 min  
 Lab File: VN077296.D  
 Acq: 11 Apr 2023 11:47

Tgt Ion:114 Resp: 923895  
 Ion Ratio Lower Upper  
 114 100  
 63 19.0 0.0 37.8  
 88 15.2 0.0 29.4





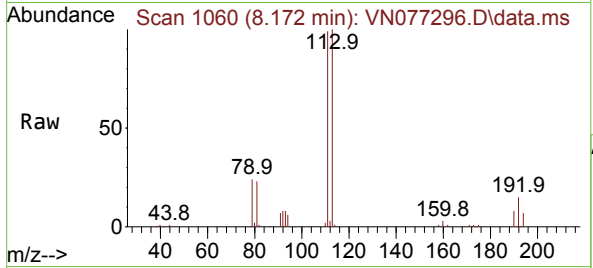
#35  
 Dibromofluoromethane  
 Concen: 47.236 ug/l  
 RT: 8.172 min Scan# 1060  
 Delta R.T. -0.000 min  
 Lab File: VN077296.D  
 Acq: 11 Apr 2023 11:47

Instrument :

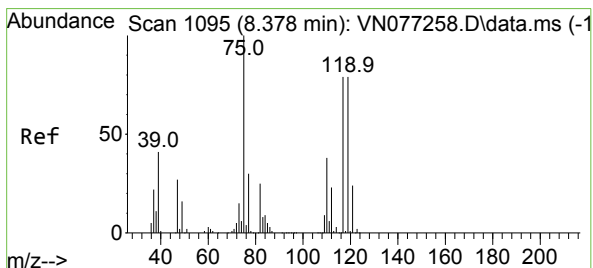
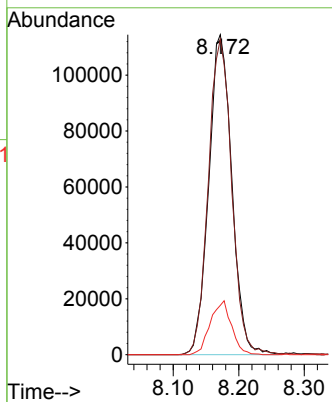
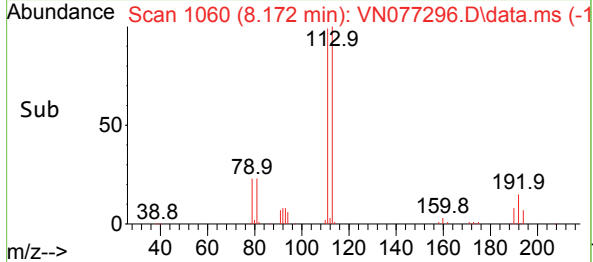
MSVOA\_N

ClientSampleId :

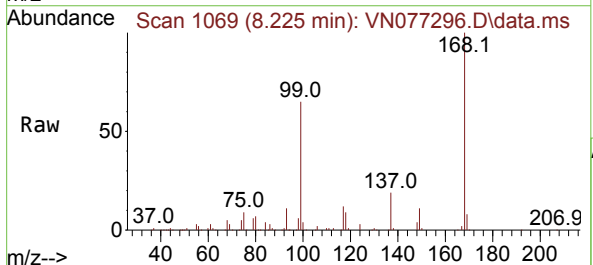
PB151999TB



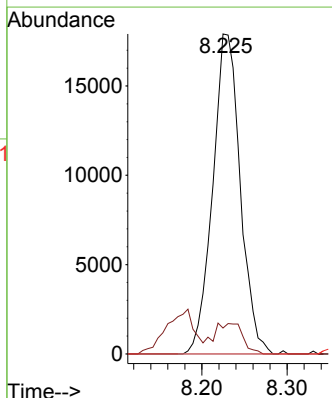
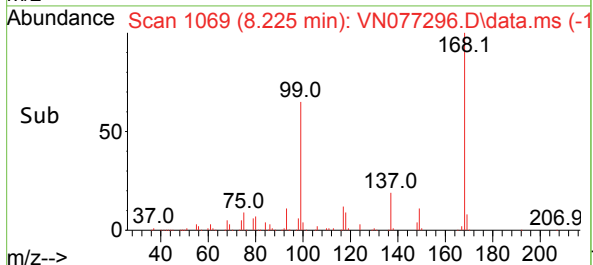
Tgt Ion:113 Resp: 279375  
 Ion Ratio Lower Upper  
 113 100  
 111 99.9 83.4 125.0  
 192 15.5 13.5 20.3

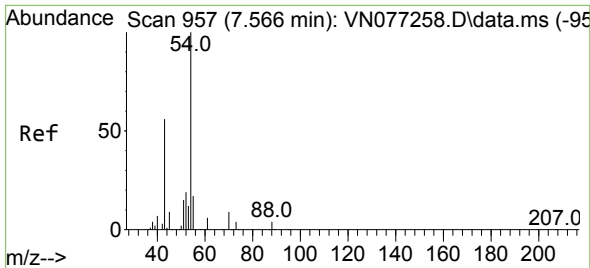


#36  
 1,1-Dichloropropene  
 Concen: 4.602 ug/l  
 RT: 8.225 min Scan# 1069  
 Delta R.T. -0.153 min  
 Lab File: VN077296.D  
 Acq: 11 Apr 2023 11:47



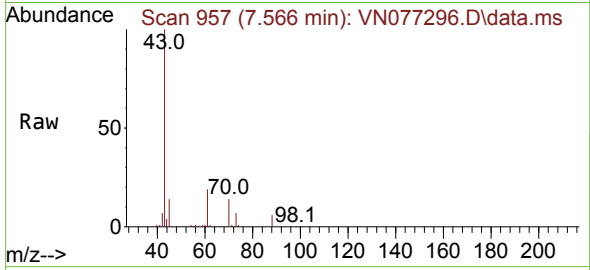
Tgt Ion: 75 Resp: 40255  
 Ion Ratio Lower Upper  
 75 100  
 110 10.2 17.8 53.5#  
 77 0.0 25.0 37.4#



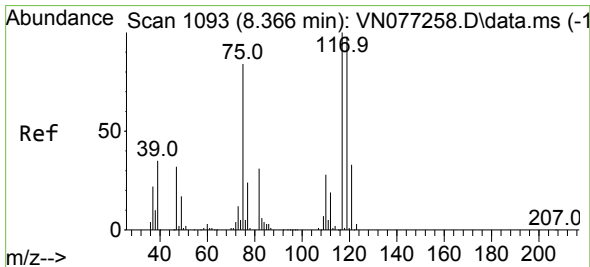
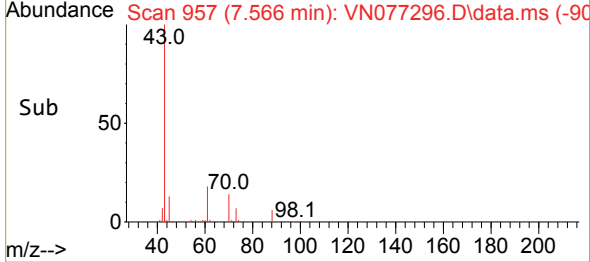
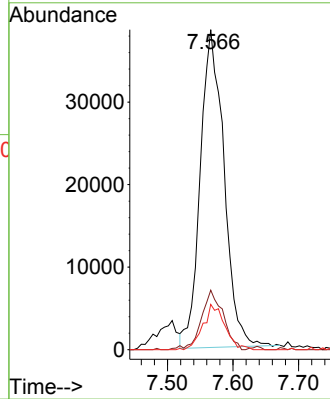


#37  
 Ethyl Acetate  
 Concen: 12.386 ug/l  
 RT: 7.566 min Scan# 91  
 Delta R.T. 0.000 min  
 Lab File: VN077296.D  
 Acq: 11 Apr 2023 11:47

Instrument :  
 MSVOA\_N  
 ClientSampleId :  
 PB151999TB

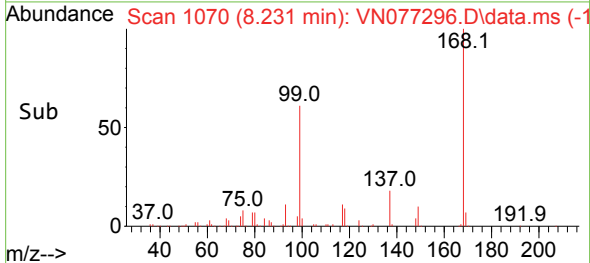
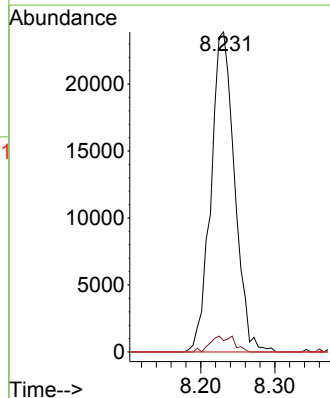
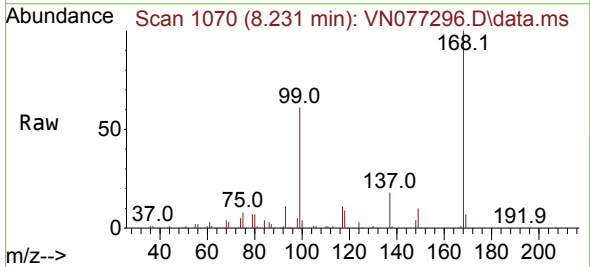


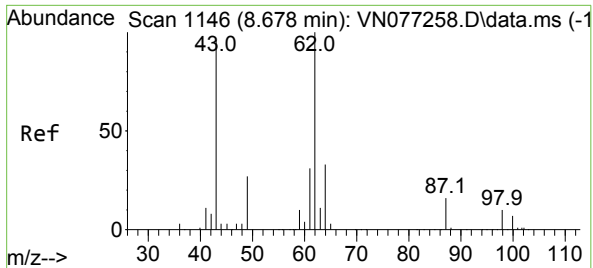
Tgt Ion: 43 Resp: 96943  
 Ion Ratio Lower Upper  
 43 100  
 61 17.2 12.2 18.2  
 70 13.1 10.0 15.0



#38  
 Carbon Tetrachloride  
 Concen: 5.914 ug/l  
 RT: 8.231 min Scan# 1070  
 Delta R.T. -0.135 min  
 Lab File: VN077296.D  
 Acq: 11 Apr 2023 11:47

Tgt Ion: 117 Resp: 53006  
 Ion Ratio Lower Upper  
 117 100  
 119 3.6 78.5 117.7#  
 121 0.0 26.6 40.0#

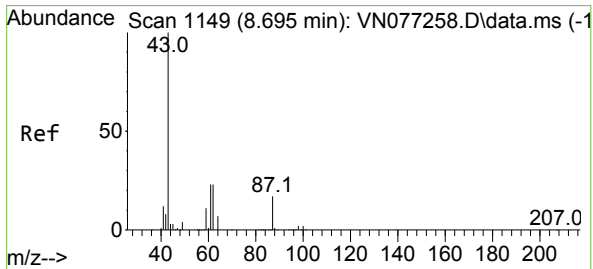
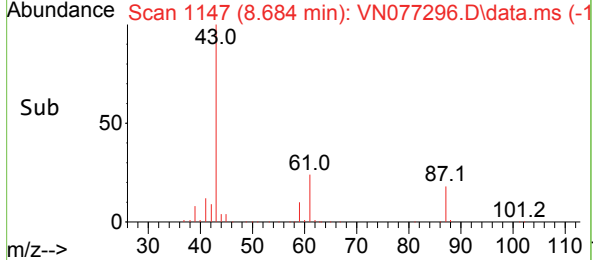
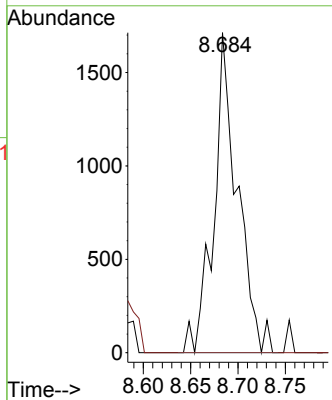
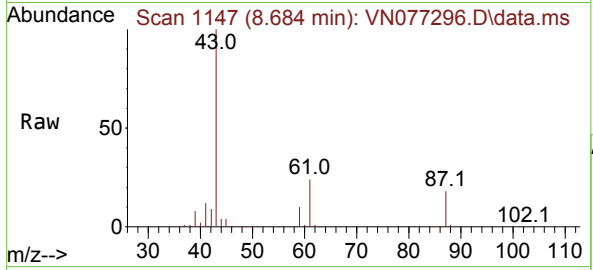




#42  
 1,2-Dichloroethane  
 Concen: 0.353 ug/l  
 RT: 8.684 min Scan# 1147  
 Delta R.T. 0.006 min  
 Lab File: VN077296.D  
 Acq: 11 Apr 2023 11:47

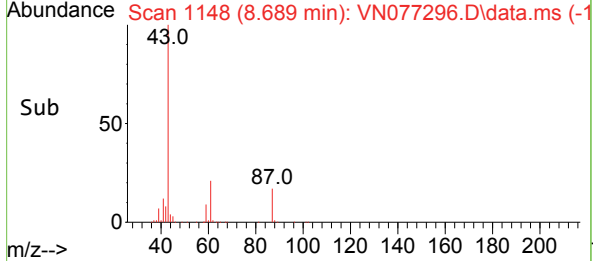
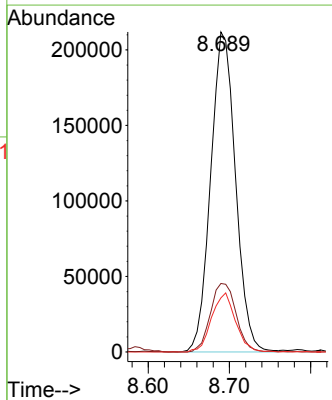
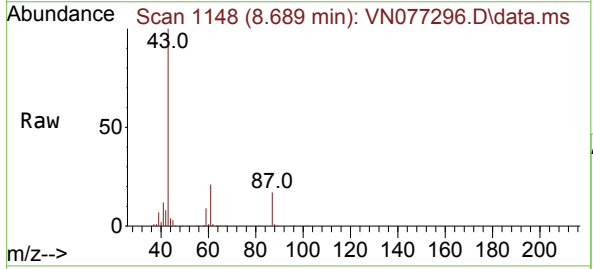
Instrument : MSVOA\_N  
 ClientSampleId : PB151999TB

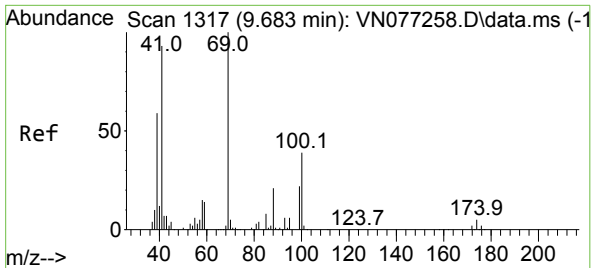
Tgt Ion: 62 Resp: 2961  
 Ion Ratio Lower Upper  
 62 100  
 98 0.0 0.0 20.2



#43  
 Isopropyl Acetate  
 Concen: 31.207 ug/l  
 RT: 8.689 min Scan# 1148  
 Delta R.T. -0.006 min  
 Lab File: VN077296.D  
 Acq: 11 Apr 2023 11:47

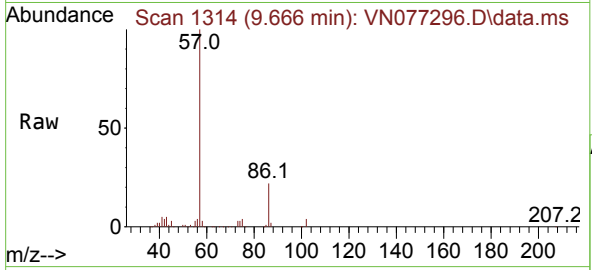
Tgt Ion: 43 Resp: 450688  
 Ion Ratio Lower Upper  
 43 100  
 61 22.2 22.7 34.1#  
 87 17.8 13.6 20.4



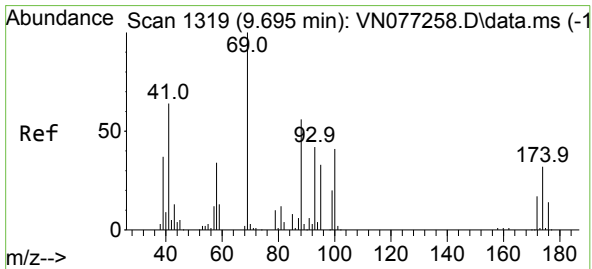
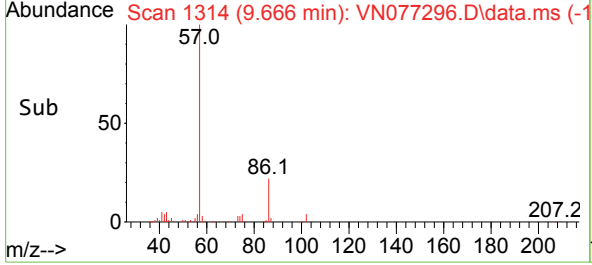
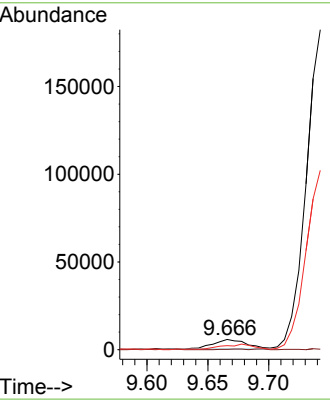


#48  
 Methyl methacrylate  
 Concen: 1.745 ug/l  
 RT: 9.666 min Scan# 11  
 Delta R.T. -0.017 min  
 Lab File: VN077296.D  
 Acq: 11 Apr 2023 11:47

Instrument : MSVOA\_N  
 Client Sample Id : PB151999TB

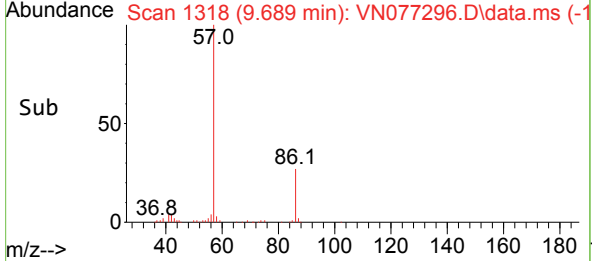
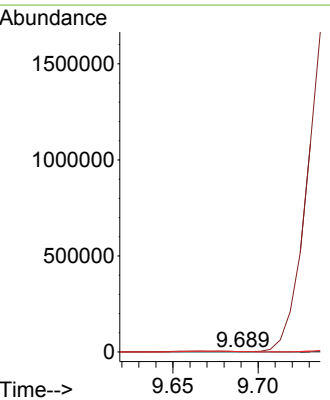
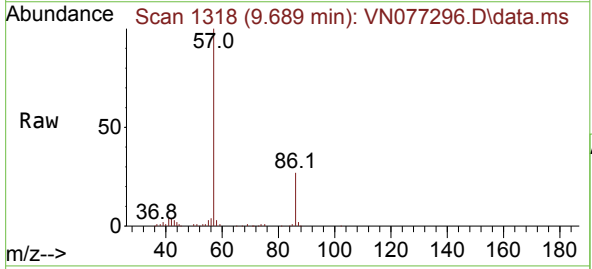


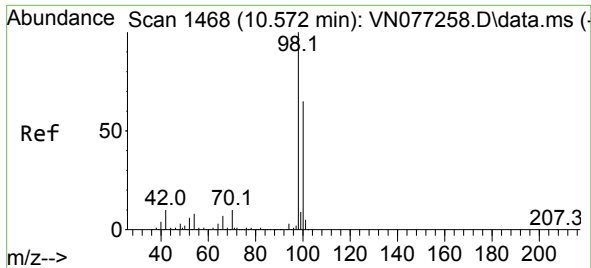
Tgt Ion: 41 Resp: 10751  
 Ion Ratio Lower Upper  
 41 100  
 69 3.7 85.0 127.6#  
 39 58.9 53.5 80.3



#49  
 1,4-Dioxane  
 Concen: 2.698 ug/l  
 RT: 9.689 min Scan# 1318  
 Delta R.T. -0.006 min  
 Lab File: VN077296.D  
 Acq: 11 Apr 2023 11:47

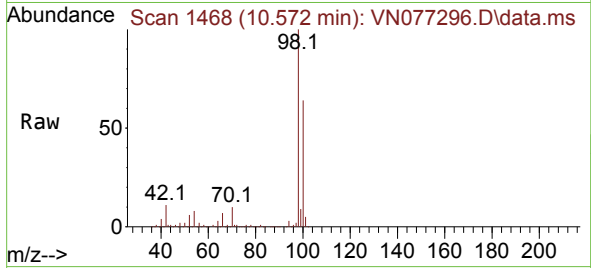
Tgt Ion: 88 Resp: 403  
 Ion Ratio Lower Upper  
 88 100  
 43 0.0 17.0 25.6#  
 58 2249.4 49.8 74.6#



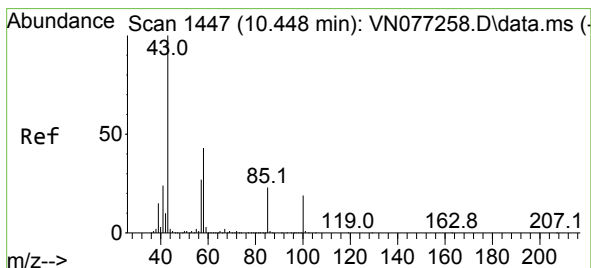
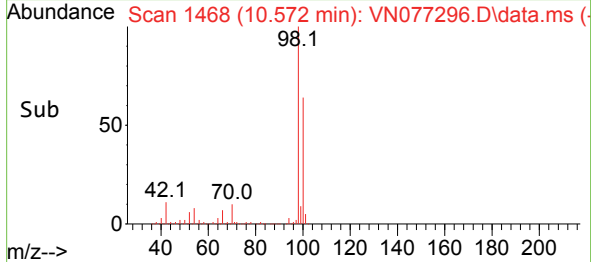
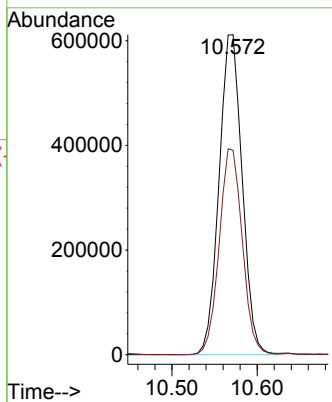


#50  
 Toluene-d8  
 Concen: 48.358 ug/l  
 RT: 10.572 min Scan# 14  
 Delta R.T. -0.000 min  
 Lab File: VN077296.D  
 Acq: 11 Apr 2023 11:47

Instrument : MSVOA\_N  
 ClientSampleId : PB151999TB

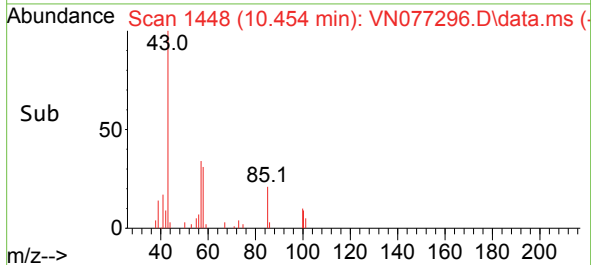
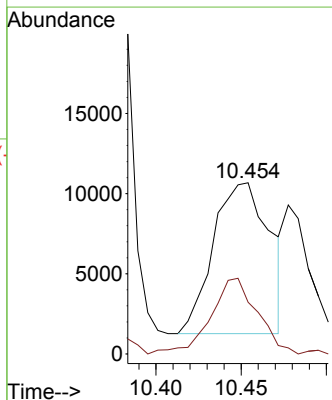
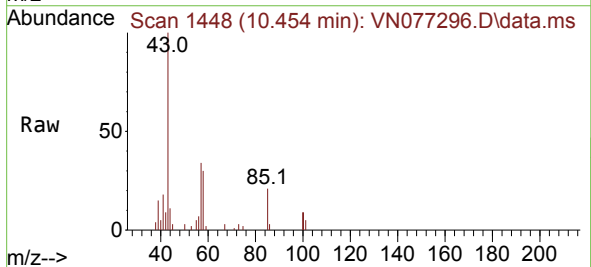


Tgt Ion: 98 Resp: 1151397  
 Ion Ratio Lower Upper  
 98 100  
 100 64.3 51.3 76.9

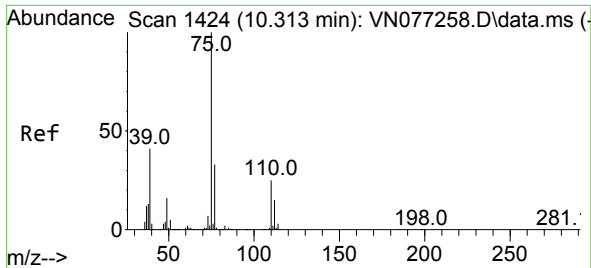


#51  
 4-Methyl-2-Pentanone  
 Concen: 2.589 ug/l  
 RT: 10.454 min Scan# 1448  
 Delta R.T. 0.006 min  
 Lab File: VN077296.D  
 Acq: 11 Apr 2023 11:47

Tgt Ion: 43 Resp: 21609  
 Ion Ratio Lower Upper  
 43 100  
 58 42.2 34.6 52.0





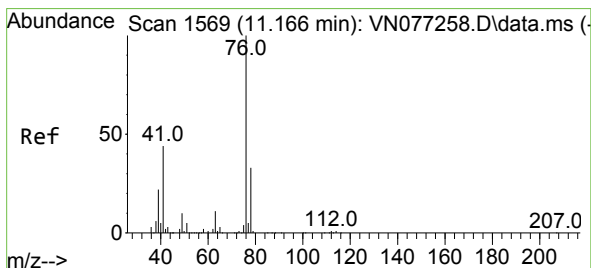
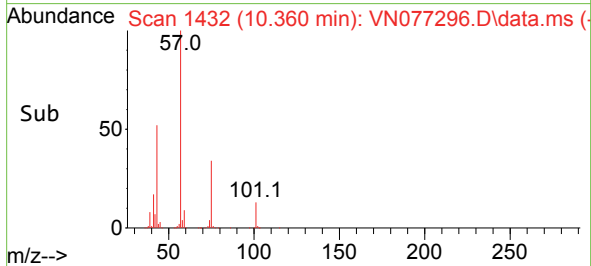
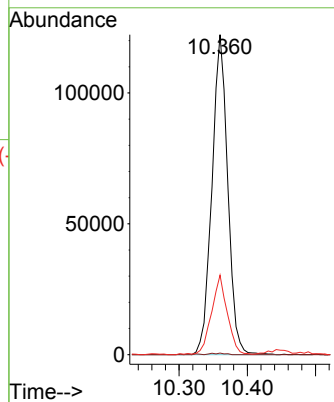
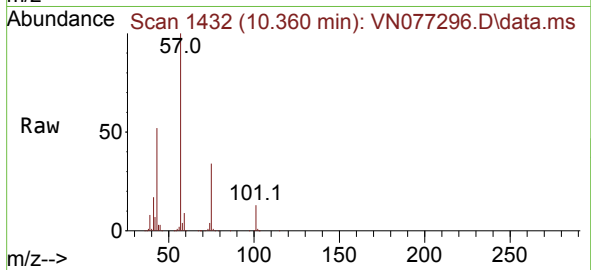


#54  
 cis-1,3-Dichloropropene  
 Concen: 17.482 ug/l  
 RT: 10.360 min Scan# 1424  
 Delta R.T. 0.047 min  
 Lab File: VN077296.D  
 Acq: 11 Apr 2023 11:47

Instrument : MSVOA\_N  
 ClientSampleId : PB151999TB

Tgt Ion: 75 Resp: 197325

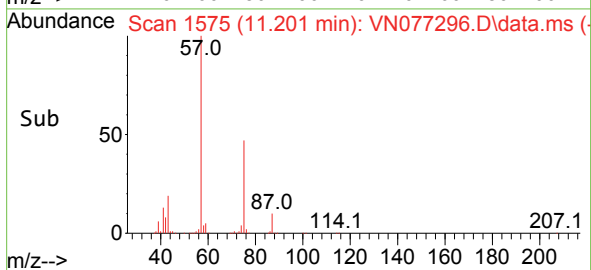
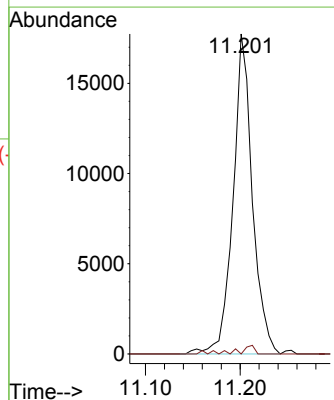
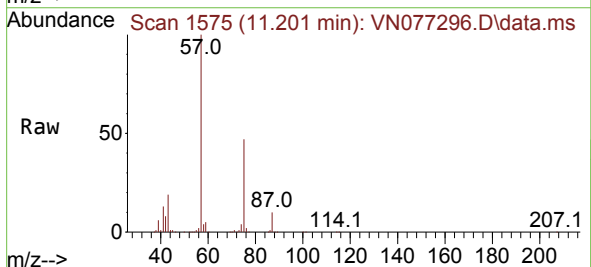
Ion	Ratio	Lower	Upper
75	100		
77	0.5	26.7	40.1#
39	24.5	32.8	49.2#

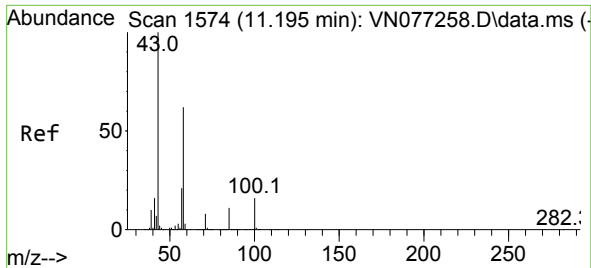


#57  
 1,3-Dichloropropane  
 Concen: 2.171 ug/l  
 RT: 11.201 min Scan# 1575  
 Delta R.T. 0.035 min  
 Lab File: VN077296.D  
 Acq: 11 Apr 2023 11:47

Tgt Ion: 76 Resp: 25140

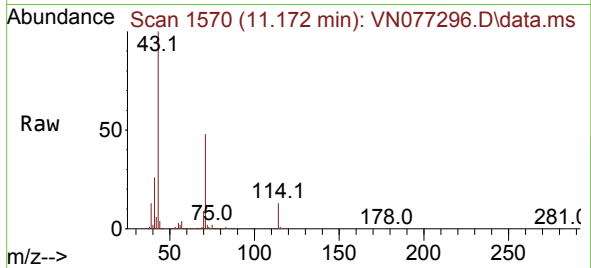
Ion	Ratio	Lower	Upper
76	100		
78	1.9	26.2	39.4#



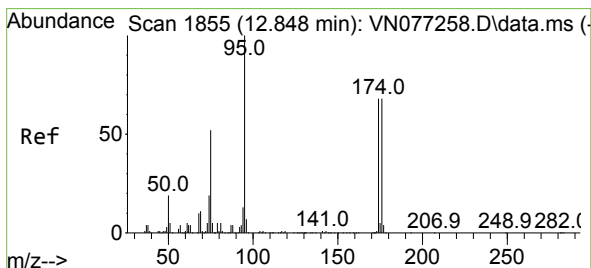
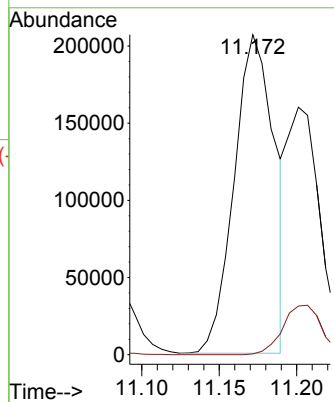
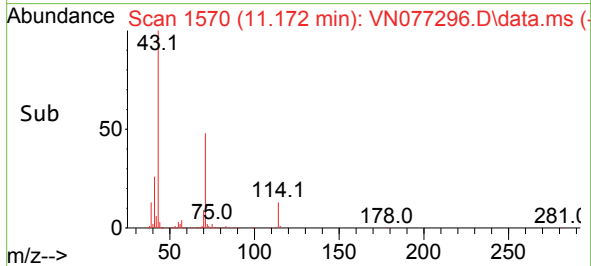


#59  
 2-Hexanone  
 Concen: 59.831 ug/l  
 RT: 11.172 min Scan# 11172  
 Delta R.T. -0.023 min  
 Lab File: VN077296.D  
 Acq: 11 Apr 2023 11:47

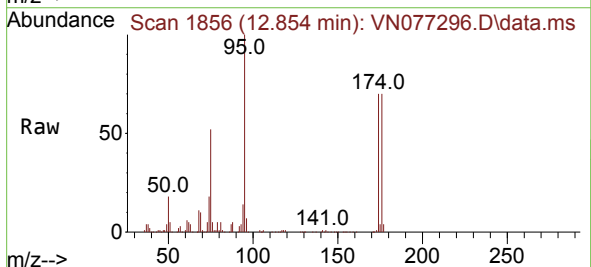
Instrument : MSVOA\_N  
 ClientSampleId : PB151999TB



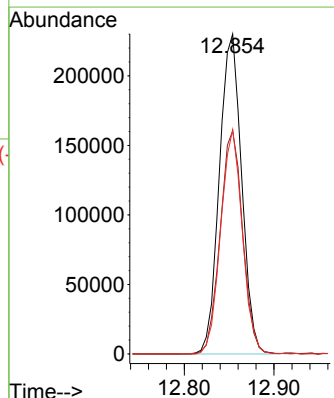
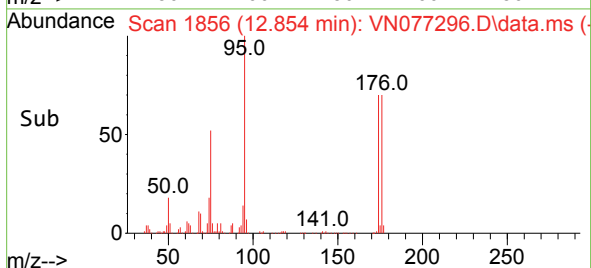
Tgt Ion: 43 Resp: 372088  
 Ion Ratio Lower Upper  
 43 100  
 58 0.0 30.9 92.5#

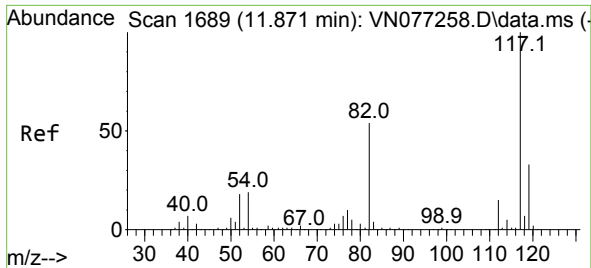


#62  
 4-Bromofluorobenzene  
 Concen: 49.997 ug/l  
 RT: 12.854 min Scan# 1856  
 Delta R.T. 0.006 min  
 Lab File: VN077296.D  
 Acq: 11 Apr 2023 11:47



Tgt Ion: 95 Resp: 395917  
 Ion Ratio Lower Upper  
 95 100  
 174 70.4 0.0 146.8  
 176 68.0 0.0 139.6



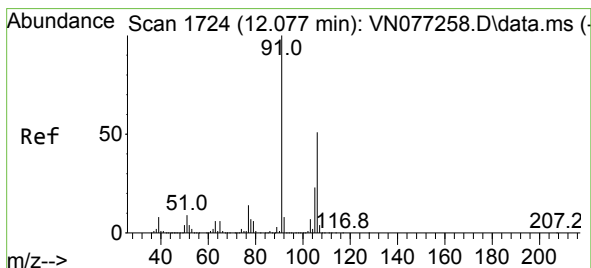
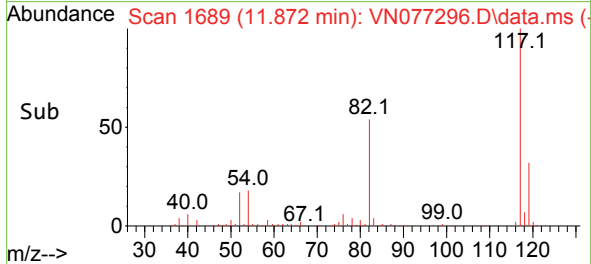
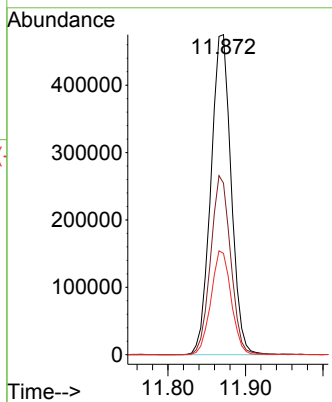
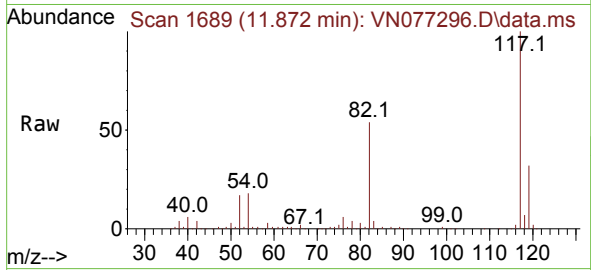


#63  
 Chlorobenzene-d5  
 Concen: 50.000 ug/l  
 RT: 11.872 min Scan# 11  
 Delta R.T. 0.001 min  
 Lab File: VN077296.D  
 Acq: 11 Apr 2023 11:47

Instrument :  
 MSVOA\_N  
 ClientSampleId :  
 PB151999TB

Tgt Ion:117 Resp: 863521

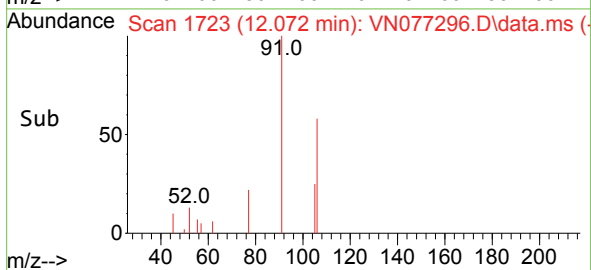
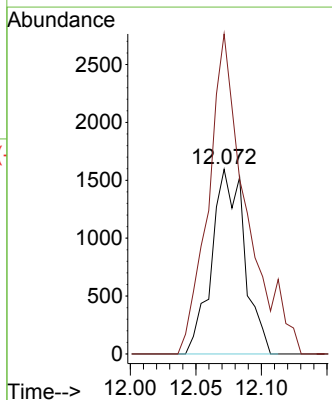
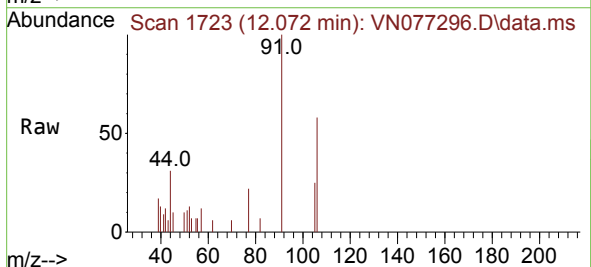
Ion	Ratio	Lower	Upper
117	100		
82	53.5	42.9	64.3
119	31.7	26.2	39.4

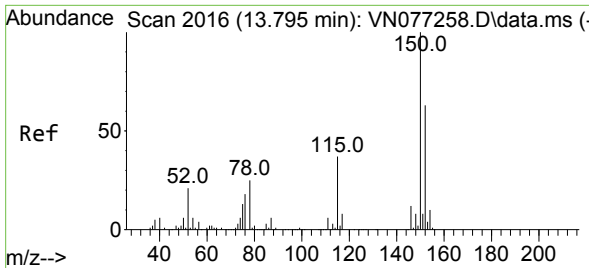


#68  
 m/p-Xylenes  
 Concen: 0.201 ug/l  
 RT: 12.072 min Scan# 1723  
 Delta R.T. -0.005 min  
 Lab File: VN077296.D  
 Acq: 11 Apr 2023 11:47

Tgt Ion:106 Resp: 2767

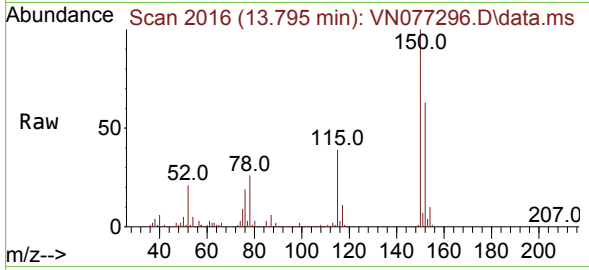
Ion	Ratio	Lower	Upper
106	100		
91	200.8	158.7	238.1



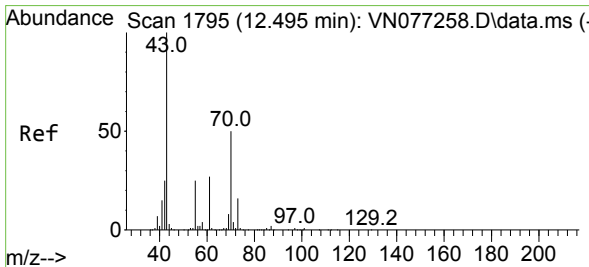
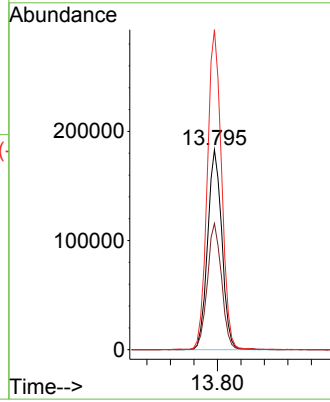
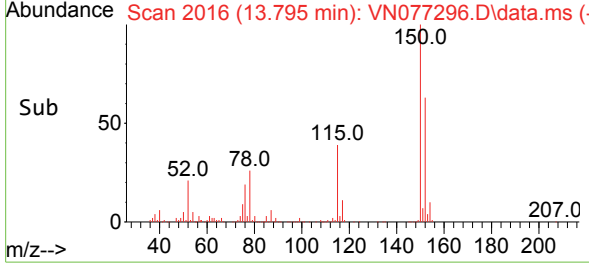


#72  
 1,4-Dichlorobenzene-d4  
 Concen: 50.000 ug/l  
 RT: 13.795 min Scan# 2016  
 Delta R.T. 0.000 min  
 Lab File: VN077296.D  
 Acq: 11 Apr 2023 11:47

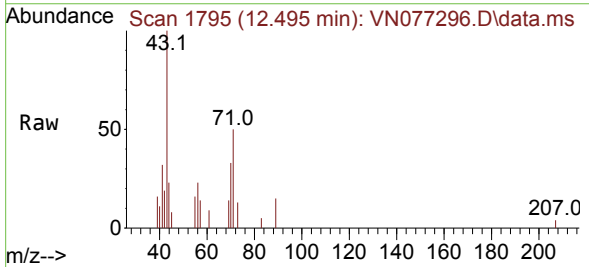
Instrument : MSVOA\_N  
 ClientSampleId : PB151999TB



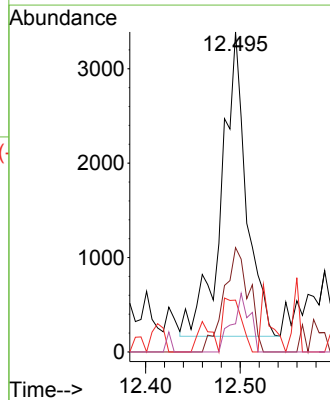
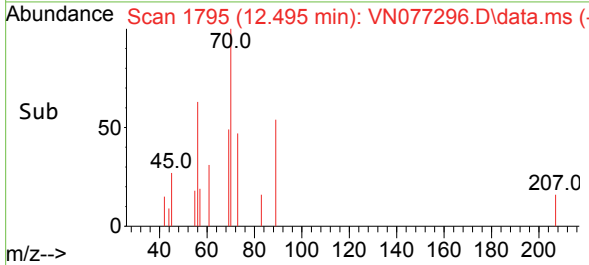
Tgt Ion:152 Resp: 308150  
 Ion Ratio Lower Upper  
 152 100  
 115 63.3 32.1 96.3  
 150 159.6 0.0 354.8

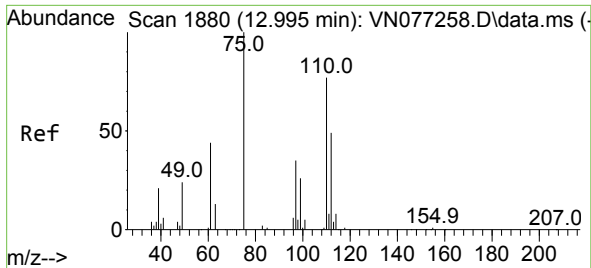


#74  
 N-ethyl acetate  
 Concen: 0.519 ug/l  
 RT: 12.495 min Scan# 1795  
 Delta R.T. 0.000 min  
 Lab File: VN077296.D  
 Acq: 11 Apr 2023 11:47



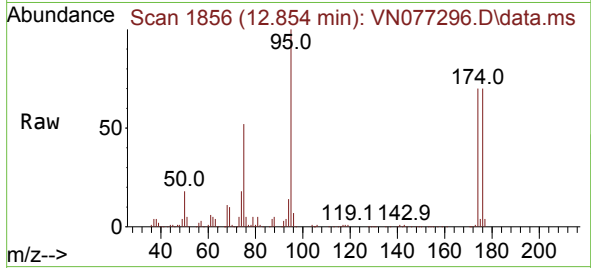
Tgt Ion: 43 Resp: 5891  
 Ion Ratio Lower Upper  
 43 100  
 70 34.1 41.0 61.6#  
 55 13.1 19.3 28.9#  
 61 13.4 22.0 33.0#



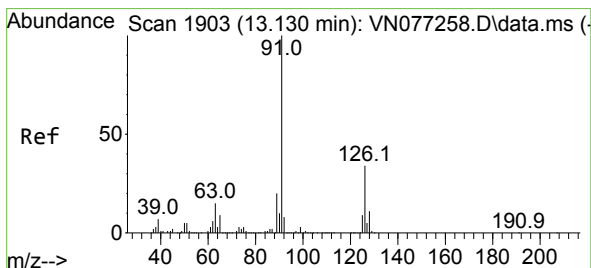
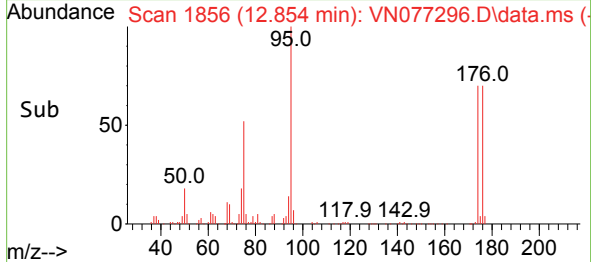
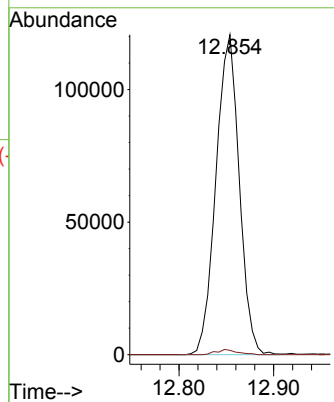


#76  
 1,2,3-Trichloropropane  
 Concen: 28.104 ug/l  
 RT: 12.854 min Scan# 1880  
 Delta R.T. -0.141 min  
 Lab File: VN077296.D  
 Acq: 11 Apr 2023 11:47

Instrument : MSVOA\_N  
 ClientSampleId : PB151999TB

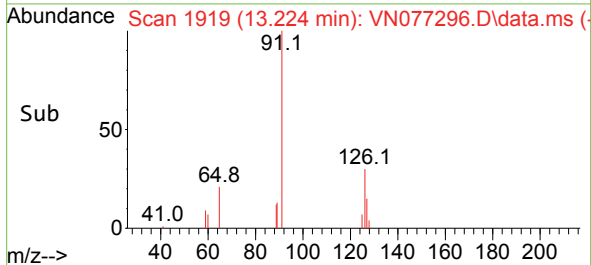
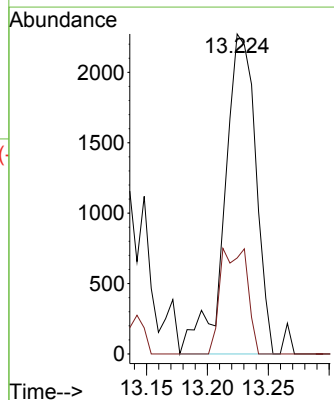
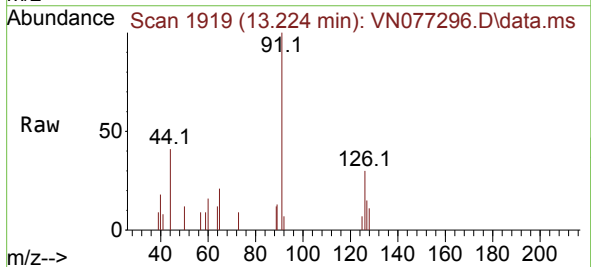


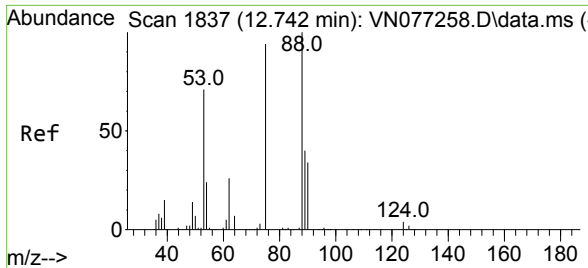
Tgt Ion: 75 Resp: 206225  
 Ion Ratio Lower Upper  
 75 100  
 77 1.5 88.3 264.9#



#79  
 2-Chlorotoluene  
 Concen: 0.203 ug/l  
 RT: 13.224 min Scan# 1919  
 Delta R.T. 0.094 min  
 Lab File: VN077296.D  
 Acq: 11 Apr 2023 11:47

Tgt Ion: 91 Resp: 4049  
 Ion Ratio Lower Upper  
 91 100  
 126 28.5 16.8 50.4



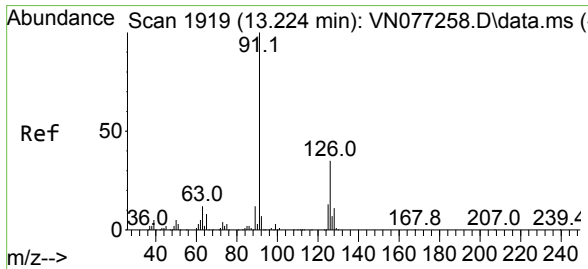
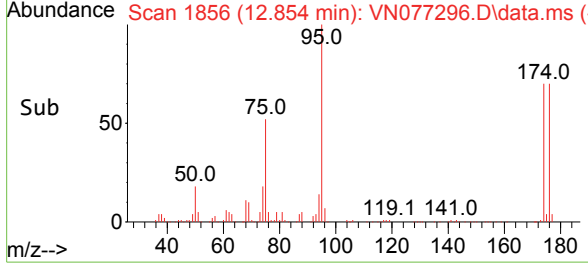
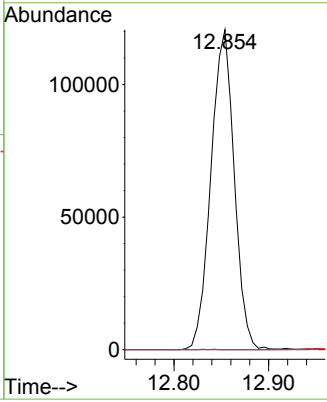
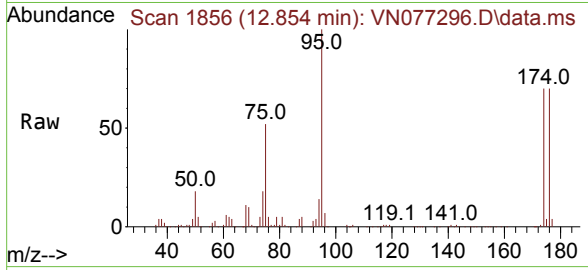


#81  
 trans-1,4-Dichloro-2-butene  
 Concen: 63.244 ug/l  
 RT: 12.854 min Scan# 1856  
 Delta R.T. 0.112 min  
 Lab File: VN077296.D  
 Acq: 11 Apr 2023 11:47

Instrument : MSVOA\_N  
 ClientSampleId : PB151999TB

Tgt Ion: 75 Resp: 206225

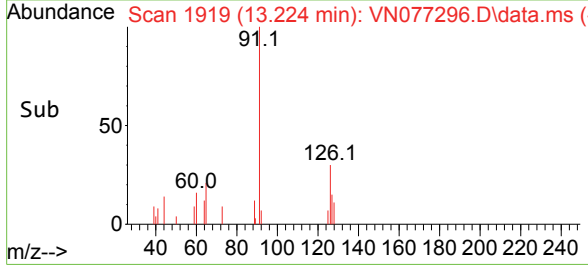
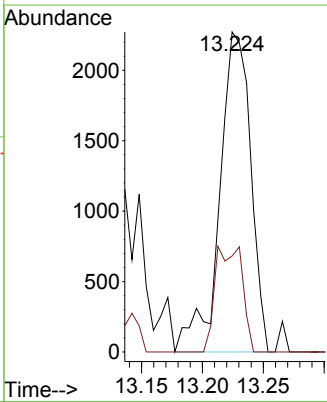
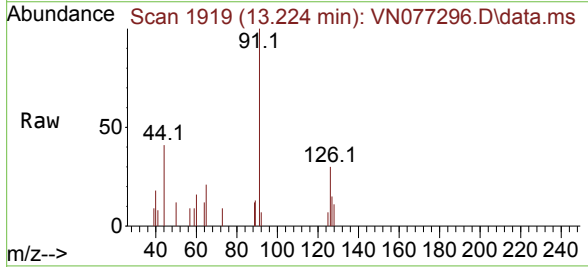
Ion	Ratio	Lower	Upper
75	100		
53	0.0	72.8	109.2#
89	0.0	37.4	56.2#

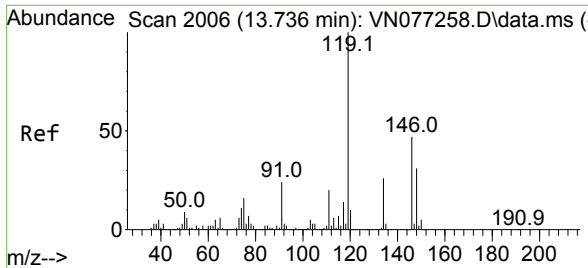


#82  
 4-Chlorotoluene  
 Concen: 0.216 ug/l  
 RT: 13.224 min Scan# 1919  
 Delta R.T. 0.000 min  
 Lab File: VN077296.D  
 Acq: 11 Apr 2023 11:47

Tgt Ion: 91 Resp: 4049

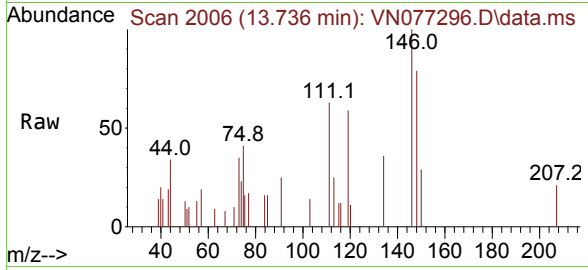
Ion	Ratio	Lower	Upper
91	100		
126	28.5	16.9	50.7





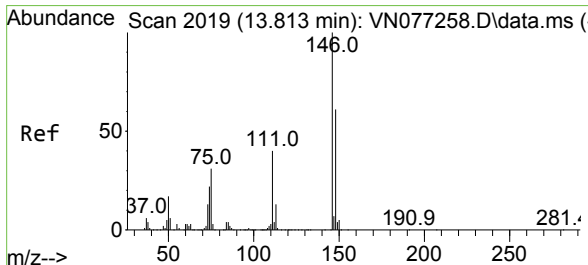
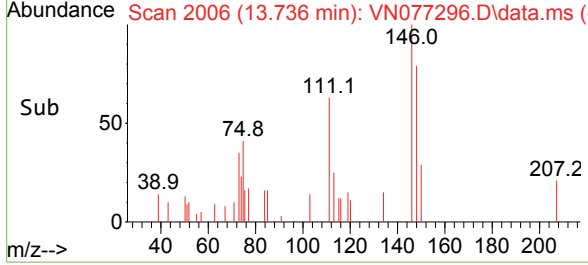
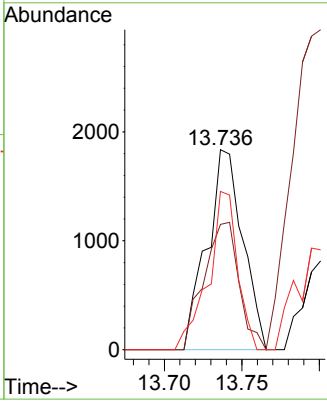
#87  
 1,3-Dichlorobenzene  
 Concen: 0.262 ug/l  
 RT: 13.736 min Scan# 2006  
 Delta R.T. 0.000 min  
 Lab File: VN077296.D  
 Acq: 11 Apr 2023 11:47

Instrument : MSVOA\_N  
 ClientSampleId : PB151999TB



Tgt Ion:146 Resp: 2949

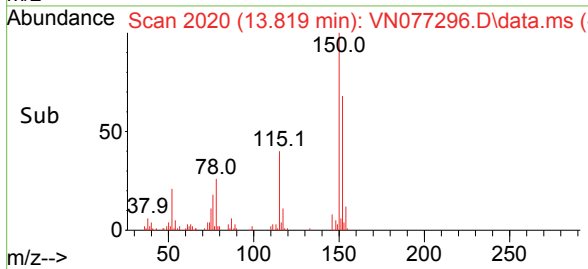
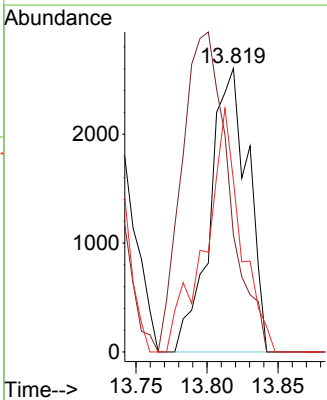
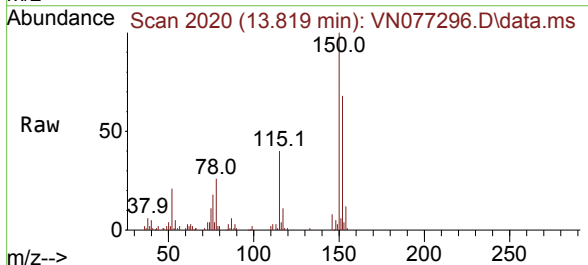
Ion	Ratio	Lower	Upper
146	100		
111	62.7	21.8	65.4
148	64.4	31.7	95.1

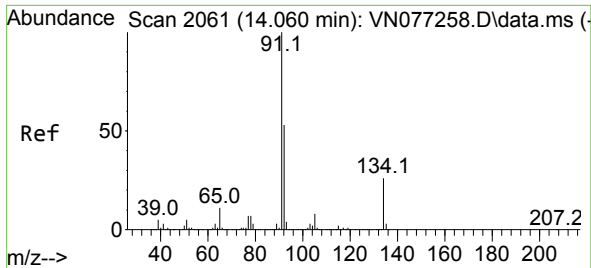


#88  
 1,4-Dichlorobenzene  
 Concen: 0.434 ug/l  
 RT: 13.819 min Scan# 2020  
 Delta R.T. 0.006 min  
 Lab File: VN077296.D  
 Acq: 11 Apr 2023 11:47

Tgt Ion:146 Resp: 4824

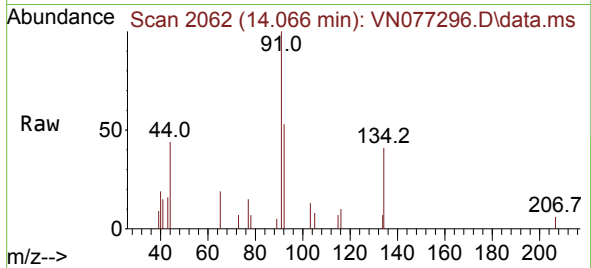
Ion	Ratio	Lower	Upper
146	100		
111	139.4	20.4	61.2#
148	80.7	31.6	95.0



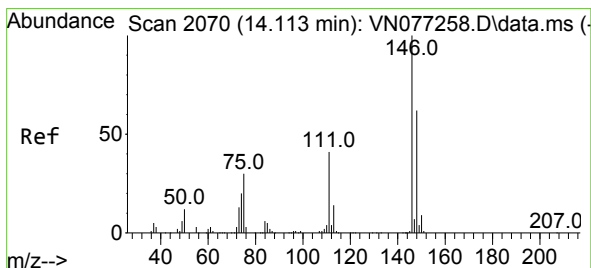
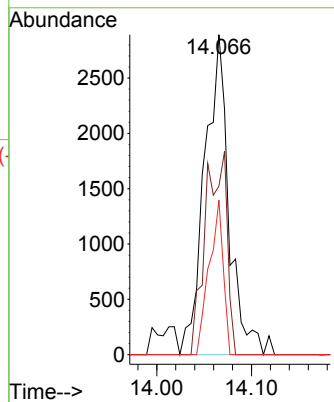
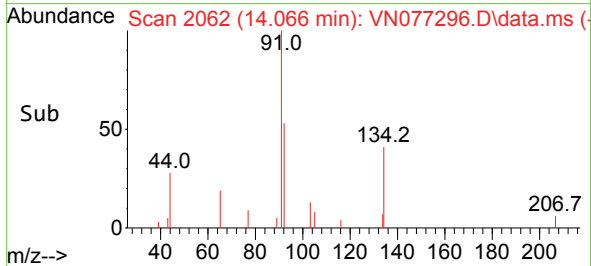


#89  
 n-Butylbenzene  
 Concen: 0.269 ug/l  
 RT: 14.066 min Scan# 2061  
 Delta R.T. 0.006 min  
 Lab File: VN077296.D  
 Acq: 11 Apr 2023 11:47

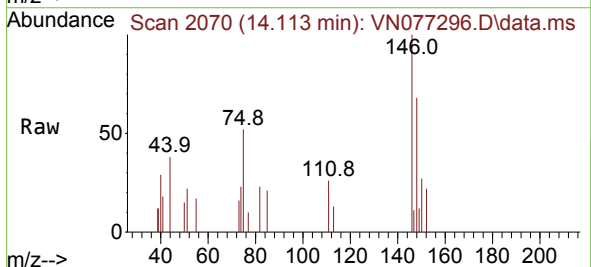
Instrument :  
 MSVOA\_N  
 ClientSampleId :  
 PB151999TB



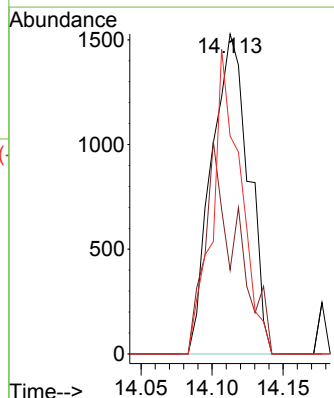
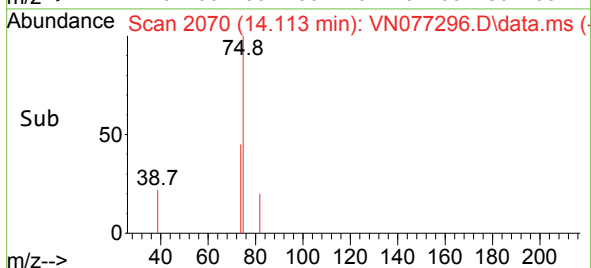
Tgt Ion: 91 Resp: 5212  
 Ion Ratio Lower Upper  
 91 100  
 92 55.8 26.7 80.0  
 134 27.7 12.8 38.3



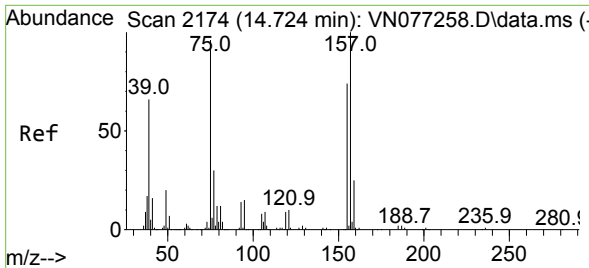
#91  
 1,2-Dichlorobenzene  
 Concen: 0.245 ug/l  
 RT: 14.113 min Scan# 2070  
 Delta R.T. -0.000 min  
 Lab File: VN077296.D  
 Acq: 11 Apr 2023 11:47



Tgt Ion: 146 Resp: 2765  
 Ion Ratio Lower Upper  
 146 100  
 111 56.6 21.9 65.5  
 148 72.6 31.9 95.5

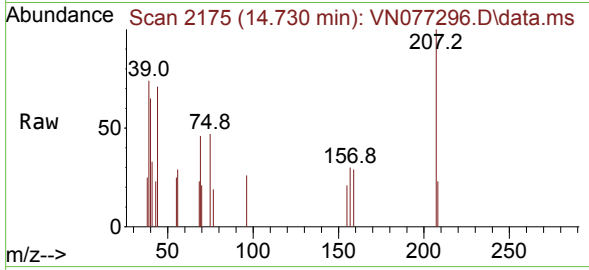




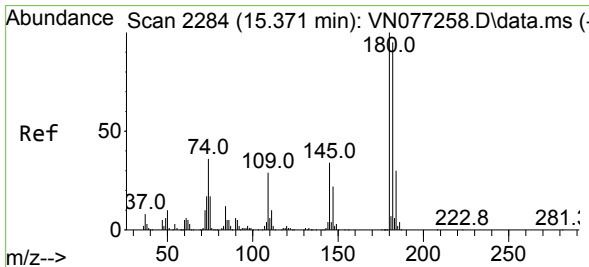
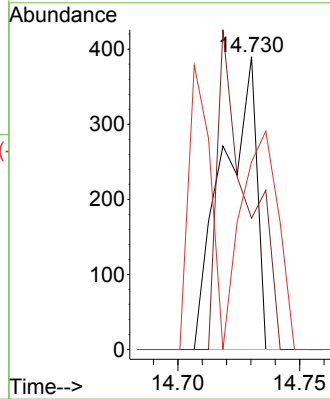
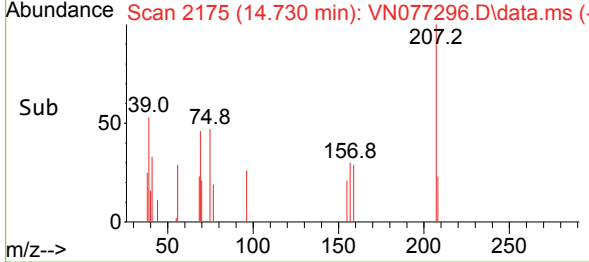


#92  
 1,2-Dibromo-3-Chloropropane  
 Concen: 0.211 ug/l  
 RT: 14.730 min Scan# 2175  
 Delta R.T. 0.006 min  
 Lab File: VN077296.D  
 Acq: 11 Apr 2023 11:47

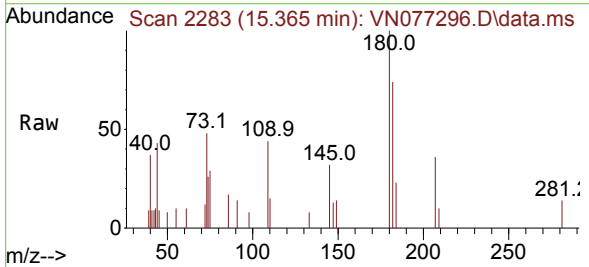
Instrument : MSVOA\_N  
 ClientSampleId : PB151999TB



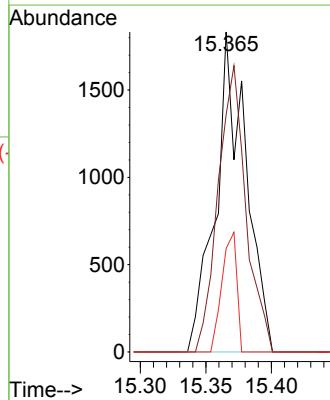
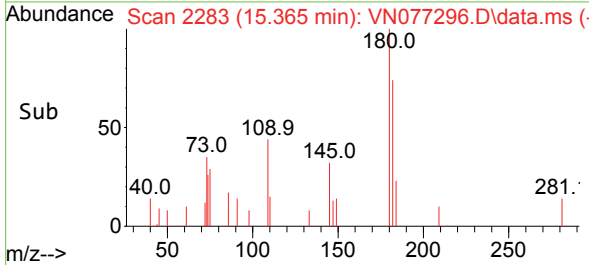
Tgt Ion: 75 Resp: 375  
 Ion Ratio Lower Upper  
 75 100  
 155 0.0 41.0 123.2#  
 157 82.9 54.0 162.0

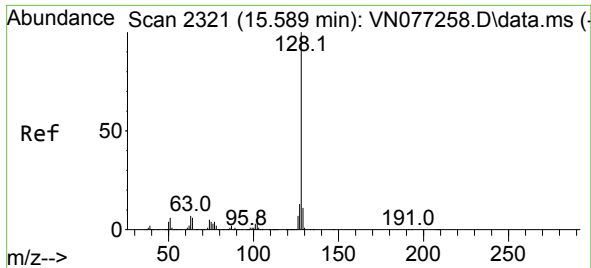


#93  
 1,2,4-Trichlorobenzene  
 Concen: 0.729 ug/l  
 RT: 15.365 min Scan# 2283  
 Delta R.T. -0.006 min  
 Lab File: VN077296.D  
 Acq: 11 Apr 2023 11:47



Tgt Ion: 180 Resp: 2964  
 Ion Ratio Lower Upper  
 180 100  
 182 81.5 46.7 140.0  
 145 18.1 16.6 49.8

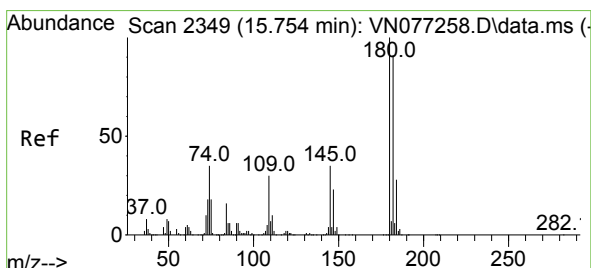
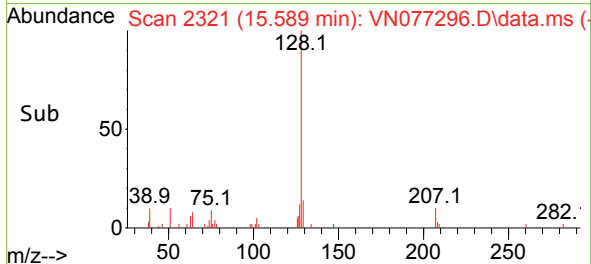
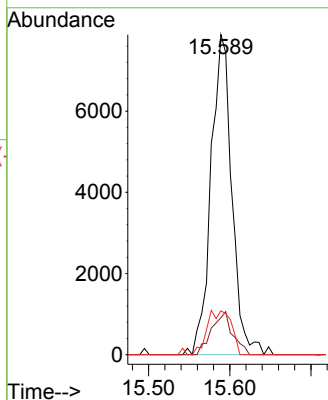
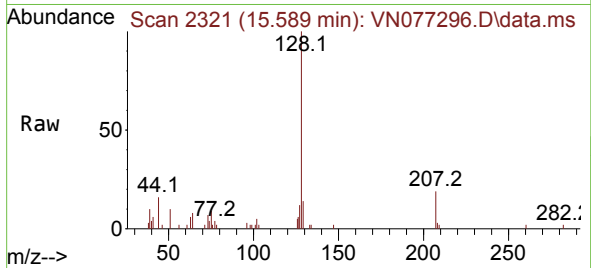




#95  
 Naphthalene  
 Concen: 0.925 ug/l  
 RT: 15.589 min Scan# 21  
 Delta R.T. 0.000 min  
 Lab File: VN077296.D  
 Acq: 11 Apr 2023 11:47

Instrument :  
 MSVOA\_N  
 ClientSampleId :  
 PB151999TB

Tgt Ion	Resp	Lower	Upper
128	14130		
127	13.5	10.2	15.4
129	15.9	8.9	13.3#



#96  
 1,2,3-Trichlorobenzene  
 Concen: 0.822 ug/l  
 RT: 15.754 min Scan# 2349  
 Delta R.T. -0.000 min  
 Lab File: VN077296.D  
 Acq: 11 Apr 2023 11:47

Tgt Ion	Resp	Lower	Upper
180	3196		
182	112.0	46.9	140.8
145	40.5	17.6	52.8

