

Data Path : Z:\voasrv\HPCHEM1\MSVOA\_N\Data\VN041224\  
 Data File : VN081730.D  
 Acq On : 12 Apr 2024 20:07  
 Operator : JC\MD  
 Sample : P2075-01  
 Misc : 5.0mL/MSVOA\_N/WATER  
 ALS Vial : 26 Sample Multiplier: 1

Instrument :  
 MSVOA\_N  
 ClientSampleId :

Quant Time: Apr 13 07:02:50 2024  
 Quant Method : Z:\voasrv\HPCHEM1\MSVOA\_N\methods\82N031824W.M  
 Quant Title : SW846 8260  
 QLast Update : Tue Mar 19 06:00:00 2024  
 Response via : Initial Calibration

Compound	R.T.	QIon	Response	Conc	Units	Dev(Min)
Internal Standards						
1) Pentafluorobenzene	8.224	168	393658	50.000	ug/l	0.00
34) 1,4-Difluorobenzene	9.100	114	697637	50.000	ug/l	0.00
63) Chlorobenzene-d5	11.870	117	638378	50.000	ug/l	0.00
72) 1,4-Dichlorobenzene-d4	13.794	152	282059	50.000	ug/l	0.00
System Monitoring Compounds						
33) 1,2-Dichloroethane-d4	8.577	65	226954	45.208	ug/l	0.00
Spiked Amount	50.000	Range	74 - 125	Recovery	=	90.420%
35) Dibromofluoromethane	8.165	113	192833	43.798	ug/l	0.00
Spiked Amount	50.000	Range	75 - 124	Recovery	=	87.600%
50) Toluene-d8	10.571	98	696145	43.740	ug/l	0.00
Spiked Amount	50.000	Range	86 - 113	Recovery	=	87.480%
62) 4-Bromofluorobenzene	12.853	95	241233	43.016	ug/l	0.00
Spiked Amount	50.000	Range	64 - 133	Recovery	=	86.040%
Target Compounds						
					Qvalue	
4) Vinyl Chloride	2.512	62	1208	0.204	ug/l #	46
8) Diethyl Ether	3.953	74	4606	1.577	ug/l	92
11) Tert butyl alcohol	5.512	59	5110495	5841.516	ug/l	99
13) Acrolein	4.159	56	161	0.205	ug/l #	15
14) Allyl chloride	4.936	41	37228	6.395	ug/l #	32
15) Acrylonitrile	5.518	53	48881	20.885	ug/l #	20
16) Acetone	4.418	43	1670782	1029.820	ug/l	96
17) Carbon Disulfide	4.706	76	78443	5.884	ug/l	98
18) Methyl Acetate	5.012	43	1813	0.362	ug/l #	63
19) Methyl tert-butyl Ether	5.794	73	21429	1.474	ug/l #	89
25) 2-Butanone	7.477	43	2762326	992.658	ug/l #	88
26) 2,2-Dichloropropane	7.435	77	270132	34.378	ug/l #	53
27) cis-1,2-Dichloroethene	7.483	96	3216	0.549	ug/l #	9
28) Bromochloromethane	7.830	49	828	0.224	ug/l #	26
29) Tetrahydrofuran	7.835	42	981883	523.769	ug/l #	74
31) Cyclohexane	8.224	56	9635	1.179	ug/l #	1
36) 1,1-Dichloropropene	8.218	75	36218	4.888	ug/l #	50
37) Ethyl Acetate	7.477	43	2762326	435.378	ug/l #	70
38) Carbon Tetrachloride	8.224	117	43476	5.356	ug/l #	18
40) Benzene	8.606	78	60014	2.770	ug/l	95
41) Methacrylonitrile	7.835	41	575686	171.574	ug/l #	47
42) 1,2-Dichloroethane	8.659	62	4537	0.595	ug/l #	75
43) Isopropyl Acetate	8.682	43	40382	3.840	ug/l #	1
48) Methyl methacrylate	9.682	41	2385	0.492	ug/l #	67
49) 1,4-Dioxane	9.700	88	6648	57.029	ug/l #	94
51) 4-Methyl-2-Pentanone	10.447	43	36669	5.714	ug/l	89
52) Toluene	10.629	92	55463	4.028	ug/l	98
55) 1,1,2-Trichloroethane	10.888	97	4192	0.757	ug/l #	26
56) Ethyl methacrylate	10.794	69	1227	0.734	ug/l #	1
59) 2-Hexanone	11.065	43	17872	3.767	ug/l	74
65) Chlorobenzene	11.894	112	23004	1.524	ug/l	99
67) Ethyl Benzene	11.965	91	73584	2.807	ug/l	99
68) m/p-Xylenes	12.070	106	53330	5.427	ug/l	95
69) o-Xylene	12.400	106	31325	3.247	ug/l	90
70) Styrene	12.406	104	5404	0.347	ug/l #	20
71) Bromoform	12.847	173	1676	0.399	ug/l #	1

Data Path : Z:\voasrv\HPCHEM1\MSVOA\_N\Data\VN041224\  
 Data File : VN081730.D  
 Acq On : 12 Apr 2024 20:07  
 Operator : JC\MD  
 Sample : P2075-01  
 Misc : 5.0mL/MSVOA\_N/WATER  
 ALS Vial : 26 Sample Multiplier: 1

Instrument :  
 MSVOA\_N  
 ClientSampleId :

Quant Time: Apr 13 07:02:50 2024  
 Quant Method : Z:\voasrv\HPCHEM1\MSVOA\_N\methods\82N031824W.M  
 Quant Title : SW846 8260  
 QLast Update : Tue Mar 19 06:00:00 2024  
 Response via : Initial Calibration

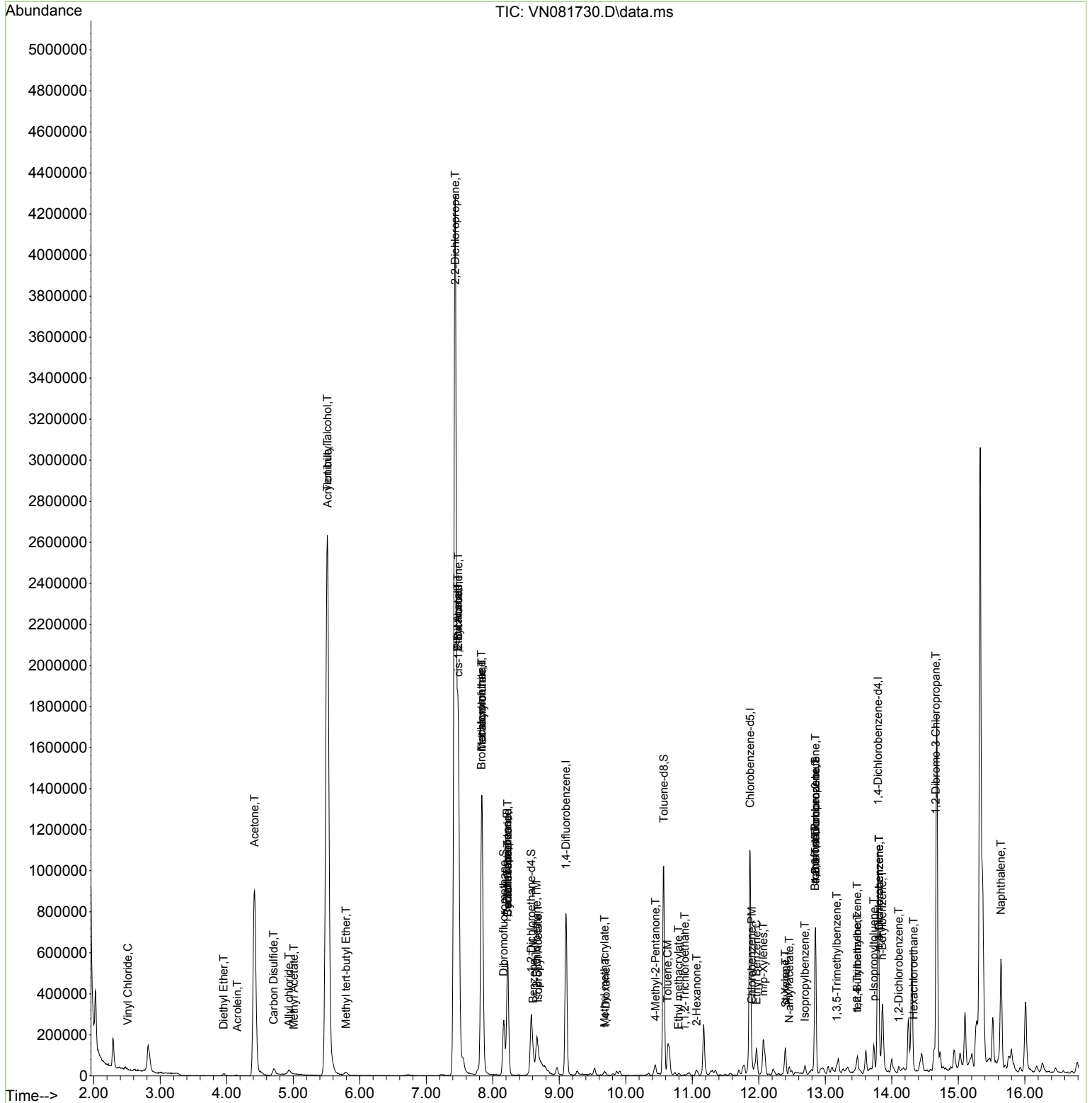
Compound	R.T.	QIon	Response	Conc	Units	Dev(Min)
73) Isopropylbenzene	12.694	105	14569	0.606	ug/l	87
74) N-amyl acetate	12.459	43	20997	2.413	ug/l #	52
76) 1,2,3-Trichloropropane	12.853	75	132739	19.674	ug/l #	1
80) 1,3,5-Trimethylbenzene	13.170	105	9748	0.491	ug/l	99
81) trans-1,4-Dichloro-2-b...	12.853	75	132739	53.165	ug/l #	14
83) tert-Butylbenzene	13.482	119	6105	0.357	ug/l #	51
84) 1,2,4-Trimethylbenzene	13.482	105	39280	1.968	ug/l	90
86) p-Isopropyltoluene	13.729	119	65525	3.274	ug/l	96
87) 1,3-Dichlorobenzene	13.812	146	22766	2.086	ug/l	81
88) 1,4-Dichlorobenzene	13.812	146	22766	2.015	ug/l	77
89) n-Butylbenzene	13.859	91	7053	0.397	ug/l	85
90) Hexachloroethane	14.329	117	823	0.217	ug/l #	21
91) 1,2-Dichlorobenzene	14.106	146	2579	0.246	ug/l #	77
92) 1,2-Dibromo-3-Chloropr...	14.664	75	2161	1.436	ug/l #	14
95) Naphthalene	15.641	128	506789	25.754	ug/l	99

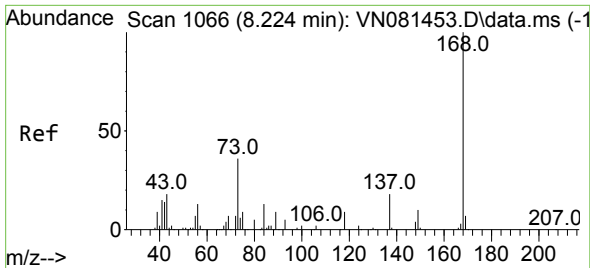
(#) = qualifier out of range (m) = manual integration (+) = signals summed

Data Path : Z:\voasrv\HPCHEM1\MSVOA\_N\Data\VN041224\  
 Data File : VN081730.D  
 Acq On : 12 Apr 2024 20:07  
 Operator : JC\MD  
 Sample : P2075-01  
 Misc : 5.0mL/MSVOA\_N/WATER  
 ALS Vial : 26 Sample Multiplier: 1

Instrument :  
 MSVOA\_N  
 ClientSampleId :

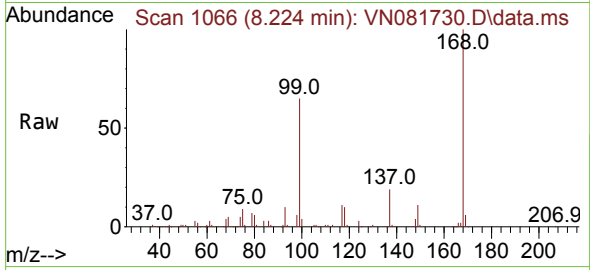
Quant Time: Apr 13 07:02:50 2024  
 Quant Method : Z:\voasrv\HPCHEM1\MSVOA\_N\methods\82N031824W.M  
 Quant Title : SW846 8260  
 QLast Update : Tue Mar 19 06:00:00 2024  
 Response via : Initial Calibration



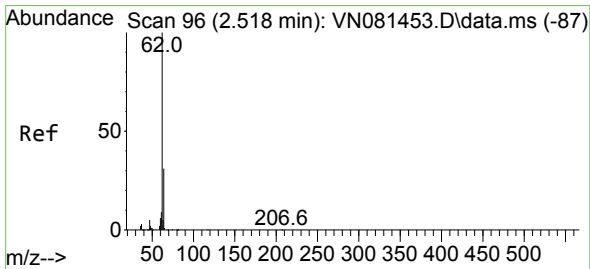
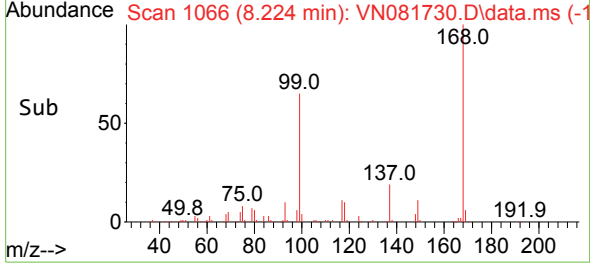
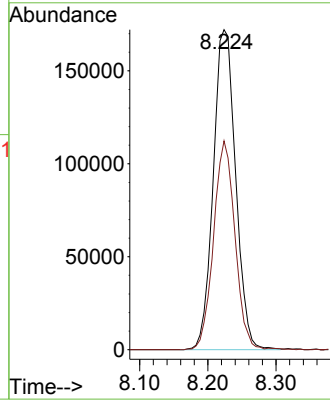


#1  
 Pentafluorobenzene  
 Concen: 50.000 ug/l  
 RT: 8.224 min Scan# 1066  
 Delta R.T. -0.000 min  
 Lab File: VN081730.D  
 Acq: 12 Apr 2024 20:07

Instrument :  
 MSVOA\_N  
 ClientSampleId :

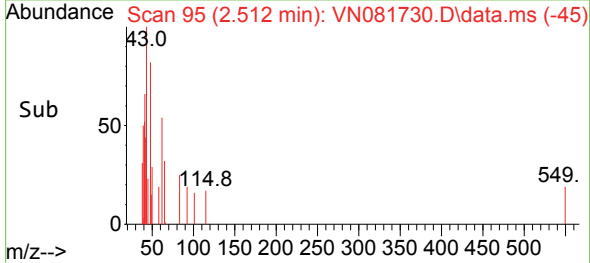
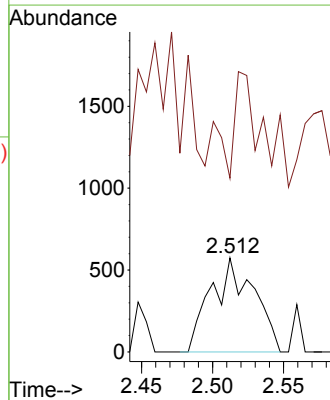
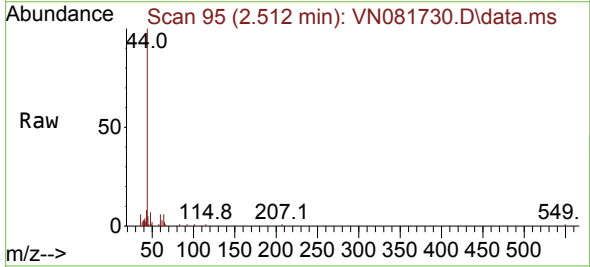


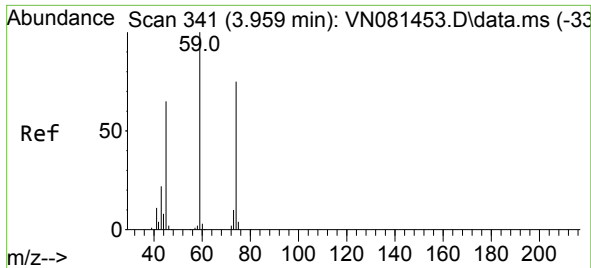
Tgt Ion:168 Resp: 393658  
 Ion Ratio Lower Upper  
 168 100  
 99 65.2 59.9 89.9



#4  
 Vinyl Chloride  
 Concen: 0.204 ug/l  
 RT: 2.512 min Scan# 95  
 Delta R.T. -0.006 min  
 Lab File: VN081730.D  
 Acq: 12 Apr 2024 20:07

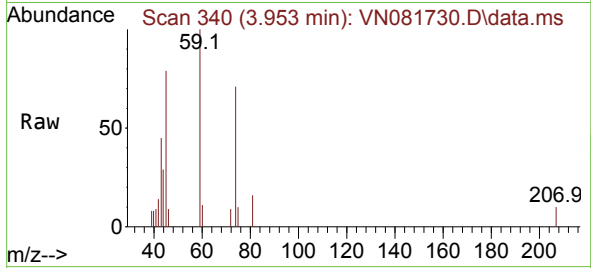
Tgt Ion: 62 Resp: 1208  
 Ion Ratio Lower Upper  
 62 100  
 64 0.0 22.7 34.1#



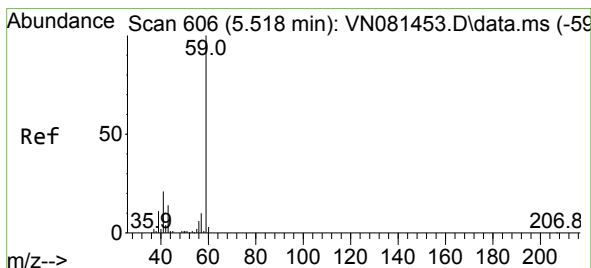
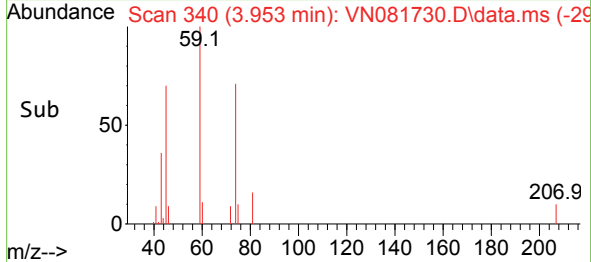
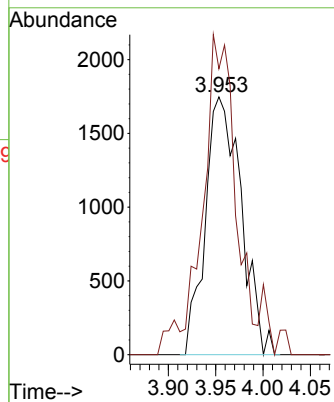


#8  
 Diethyl Ether  
 Concen: 1.577 ug/l  
 RT: 3.953 min Scan# 341  
 Delta R.T. -0.006 min  
 Lab File: VN081730.D  
 Acq: 12 Apr 2024 20:07

Instrument :  
 MSVOA\_N  
 ClientSampleId :

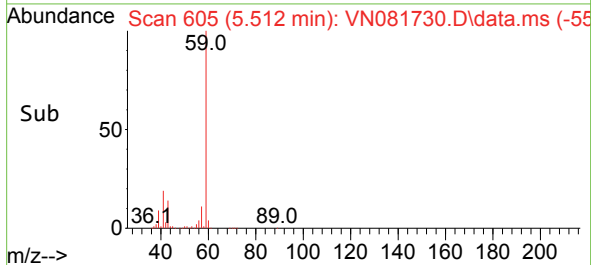
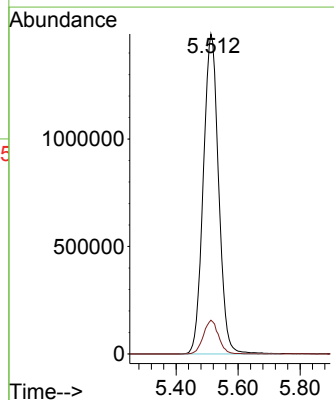
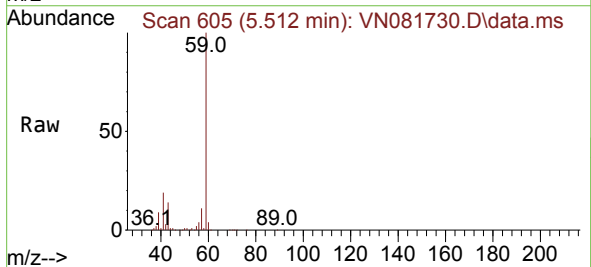


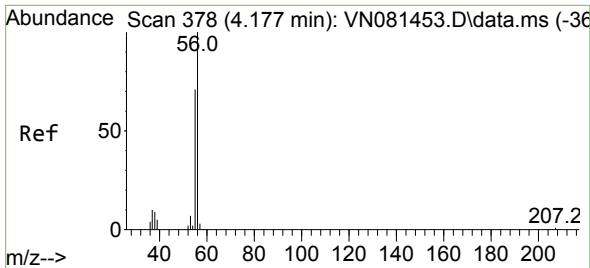
Tgt Ion: 74 Resp: 4606  
 Ion Ratio Lower Upper  
 74 100  
 45 114.5 53.3 159.9



#11  
 Tert butyl alcohol  
 Concen: 5841.516 ug/l  
 RT: 5.512 min Scan# 605  
 Delta R.T. -0.006 min  
 Lab File: VN081730.D  
 Acq: 12 Apr 2024 20:07

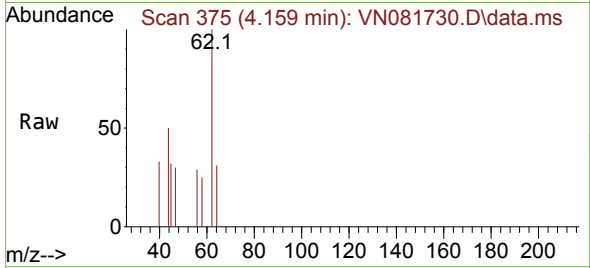
Tgt Ion: 59 Resp: 5110495  
 Ion Ratio Lower Upper  
 59 100  
 57 10.5 8.6 12.8



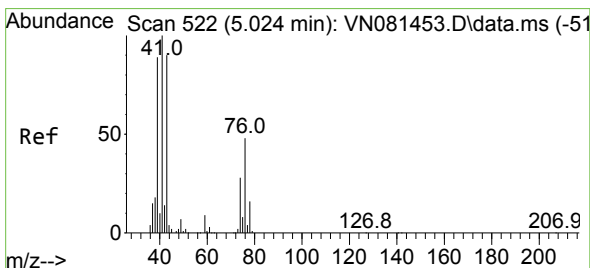
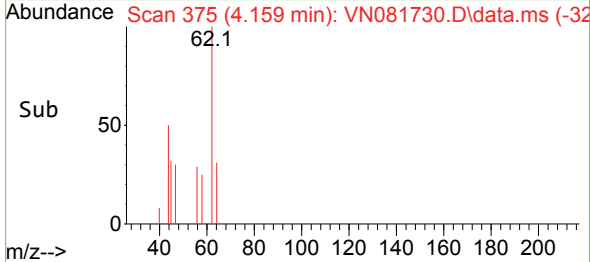
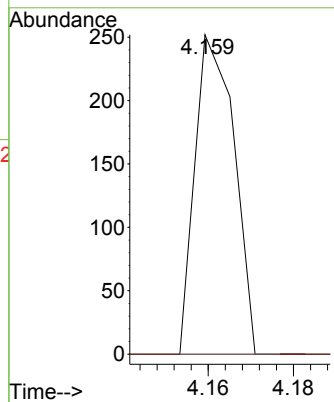


#13  
 Acrolein  
 Concen: 0.205 ug/l  
 RT: 4.159 min Scan# 31  
 Delta R.T. -0.018 min  
 Lab File: VN081730.D  
 Acq: 12 Apr 2024 20:07

Instrument :  
 MSVOA\_N  
 ClientSampleId :

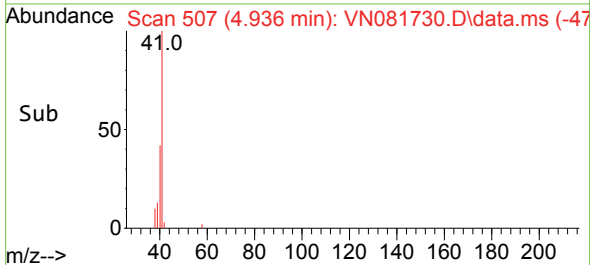
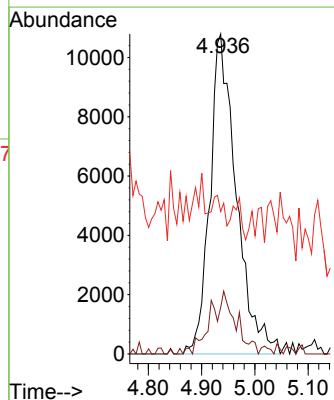
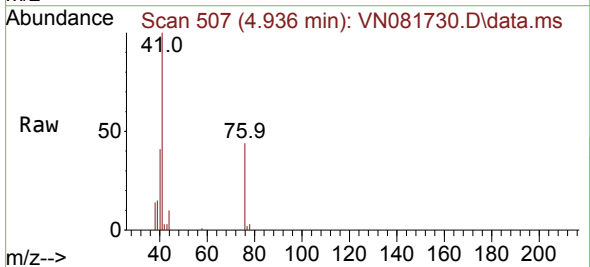


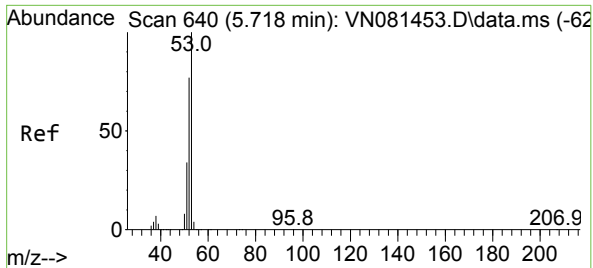
Tgt Ion: 56 Resp: 161  
 Ion Ratio Lower Upper  
 56 100  
 55 0.0 55.3 82.9#



#14  
 Allyl chloride  
 Concen: 6.395 ug/l  
 RT: 4.936 min Scan# 507  
 Delta R.T. -0.088 min  
 Lab File: VN081730.D  
 Acq: 12 Apr 2024 20:07

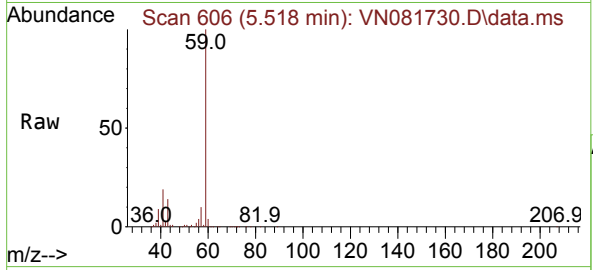
Tgt Ion: 41 Resp: 37228  
 Ion Ratio Lower Upper  
 41 100  
 39 11.5 57.7 86.5#  
 76 0.0 26.8 40.2#



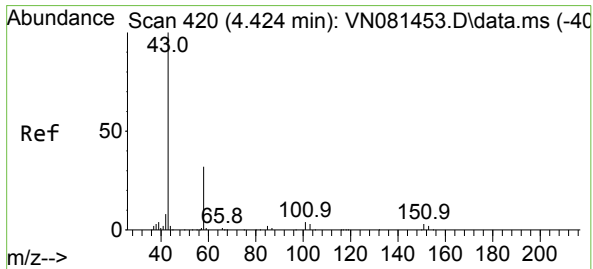
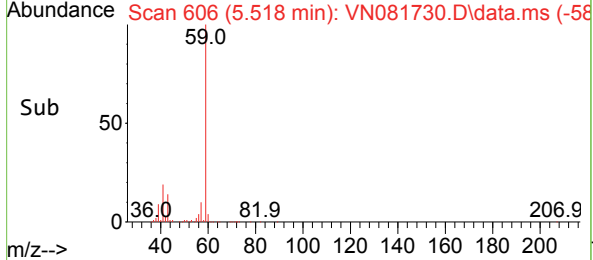
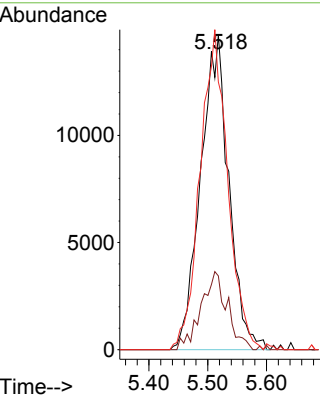


#15  
 Acrylonitrile  
 Concen: 20.885 ug/l  
 RT: 5.518 min Scan# 60  
 Delta R.T. -0.200 min  
 Lab File: VN081730.D  
 Acq: 12 Apr 2024 20:07

Instrument : MSVOA\_N  
 ClientSampleId :

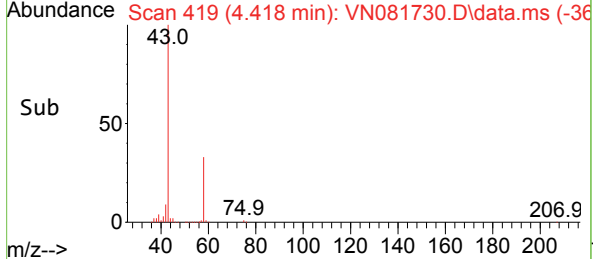
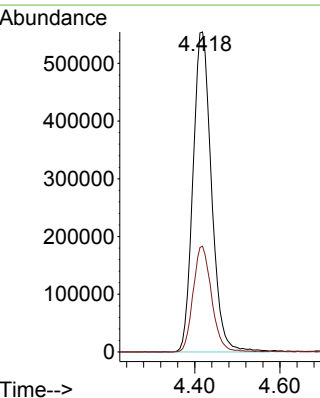
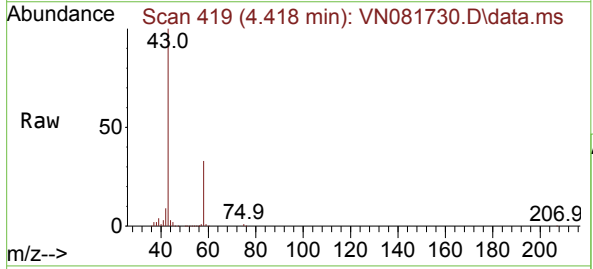


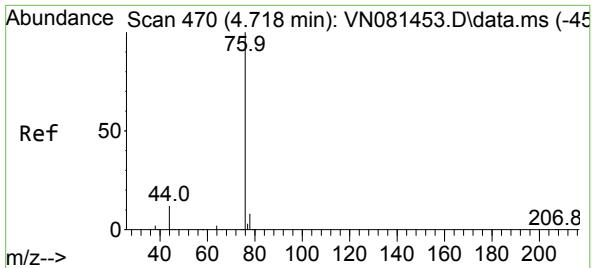
Tgt Ion: 53 Resp: 48881  
 Ion Ratio Lower Upper  
 53 100  
 52 23.1 64.8 97.2#  
 51 99.6 26.9 40.3#



#16  
 Acetone  
 Concen: 1029.820 ug/l  
 RT: 4.418 min Scan# 419  
 Delta R.T. -0.006 min  
 Lab File: VN081730.D  
 Acq: 12 Apr 2024 20:07

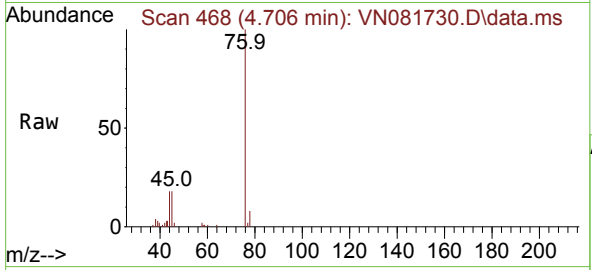
Tgt Ion: 43 Resp: 1670782  
 Ion Ratio Lower Upper  
 43 100  
 58 33.0 24.8 37.2



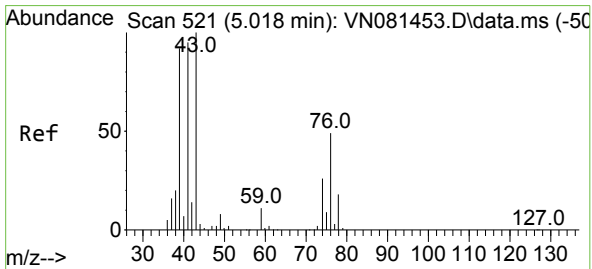
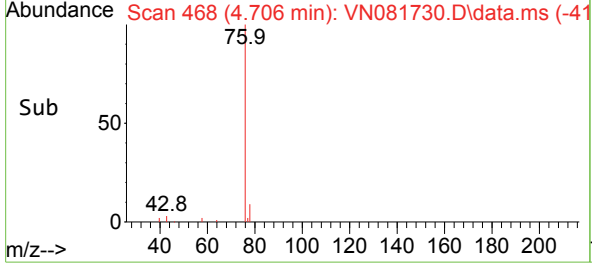
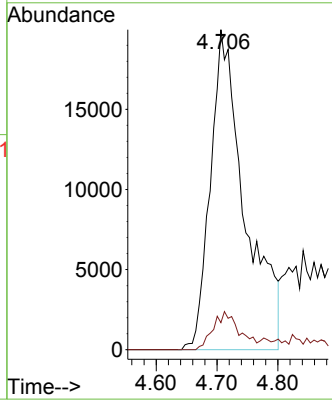


#17  
 Carbon Disulfide  
 Concen: 5.884 ug/l  
 RT: 4.706 min Scan# 408  
 Delta R.T. -0.012 min  
 Lab File: VN081730.D  
 Acq: 12 Apr 2024 20:07

Instrument : MSVOA\_N  
 ClientSampleId :

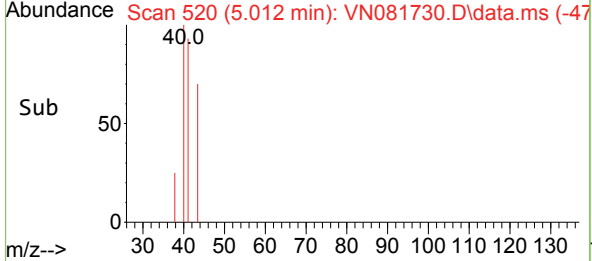
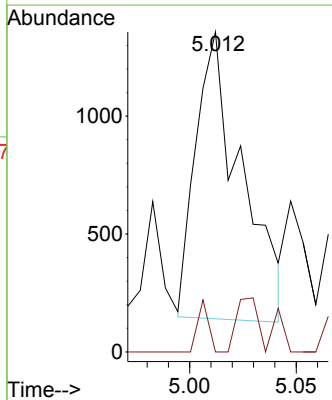
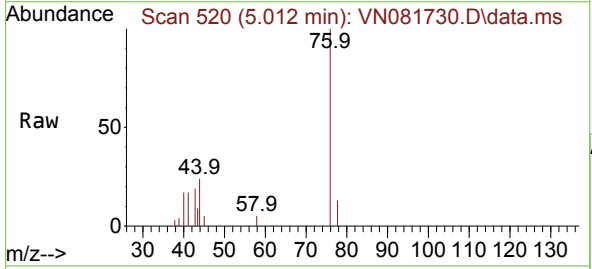


Tgt Ion: 76 Resp: 78443  
 Ion Ratio Lower Upper  
 76 100  
 78 8.5 6.3 9.5

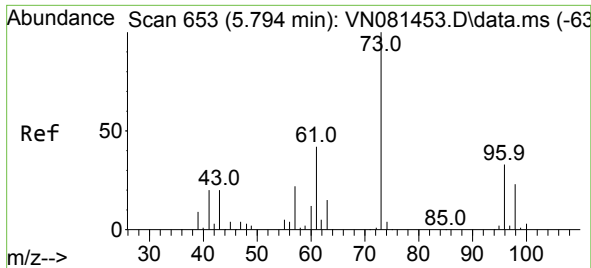


#18  
 Methyl Acetate  
 Concen: 0.362 ug/l  
 RT: 5.012 min Scan# 520  
 Delta R.T. -0.006 min  
 Lab File: VN081730.D  
 Acq: 12 Apr 2024 20:07

Tgt Ion: 43 Resp: 1813  
 Ion Ratio Lower Upper  
 43 100  
 74 4.3 17.3 25.9#

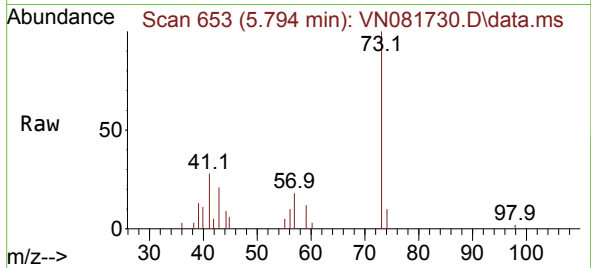




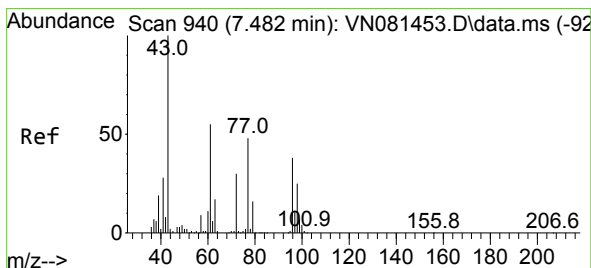
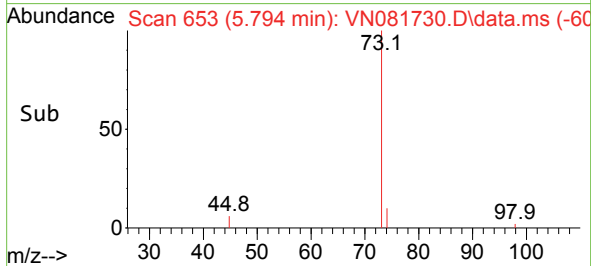
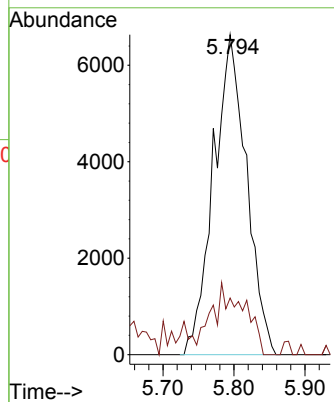


#19  
 Methyl tert-butyl Ether  
 Concen: 1.474 ug/l  
 RT: 5.794 min Scan# 61  
 Delta R.T. 0.000 min  
 Lab File: VN081730.D  
 Acq: 12 Apr 2024 20:07

Instrument :  
 MSVOA\_N  
 ClientSampleId :

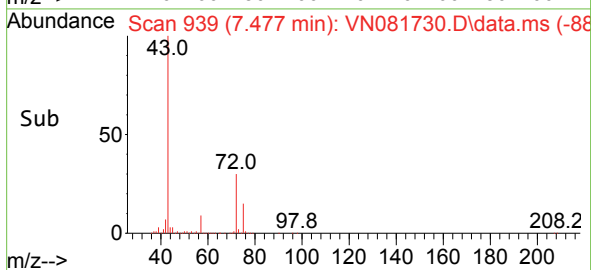
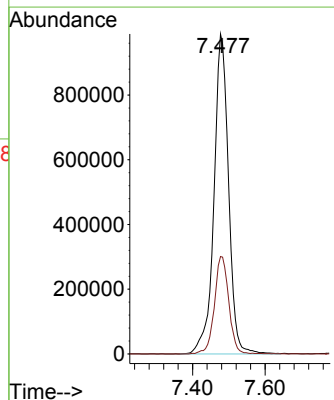
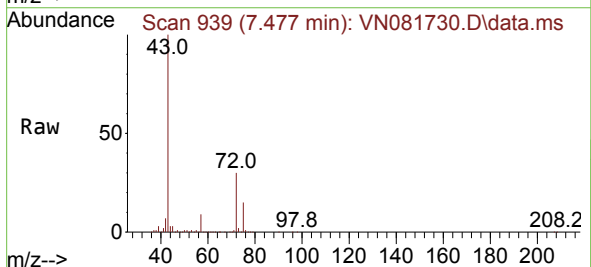


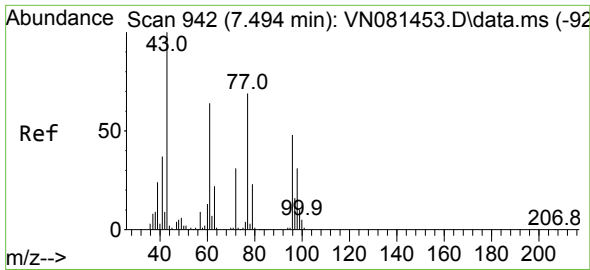
Tgt Ion: 73 Resp: 21429  
 Ion Ratio Lower Upper  
 73 100  
 57 17.7 18.2 27.4#



#25  
 2-Butanone  
 Concen: 992.658 ug/l  
 RT: 7.477 min Scan# 939  
 Delta R.T. -0.006 min  
 Lab File: VN081730.D  
 Acq: 12 Apr 2024 20:07

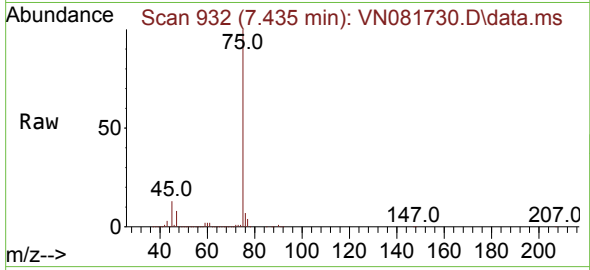
Tgt Ion: 43 Resp: 2762326  
 Ion Ratio Lower Upper  
 43 100  
 72 30.4 19.5 29.3#



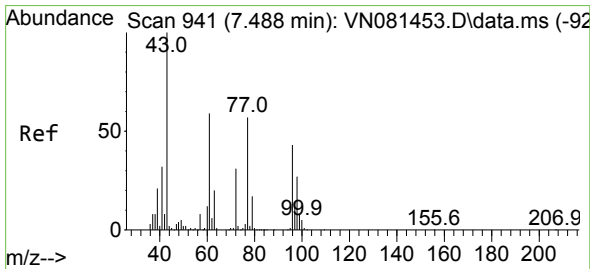
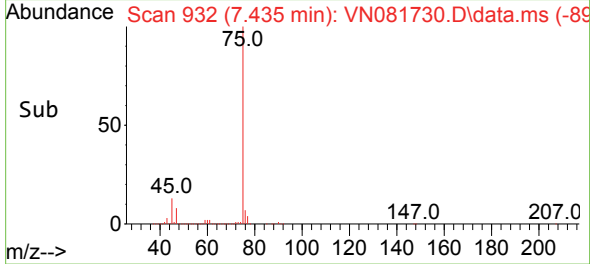
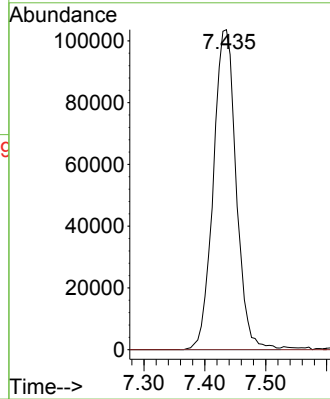


#26  
 2,2-Dichloropropane  
 Concen: 34.378 ug/l  
 RT: 7.435 min Scan# 91  
 Delta R.T. -0.059 min  
 Lab File: VN081730.D  
 Acq: 12 Apr 2024 20:07

Instrument :  
 MSVOA\_N  
 ClientSampleId :

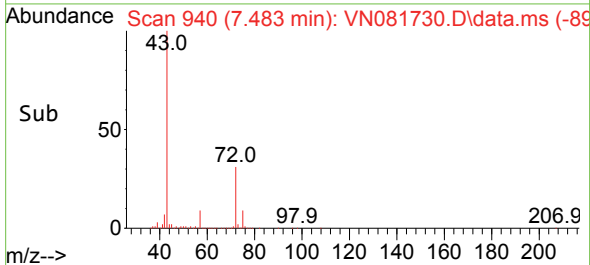
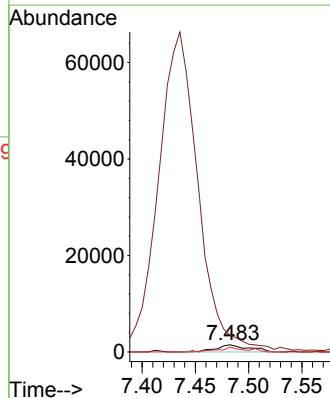
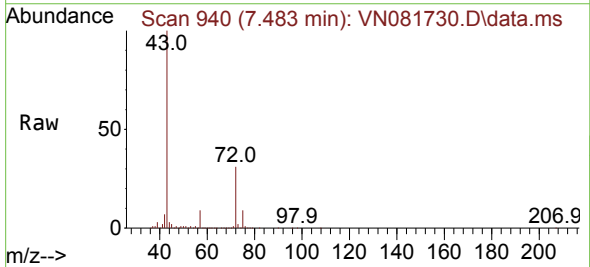


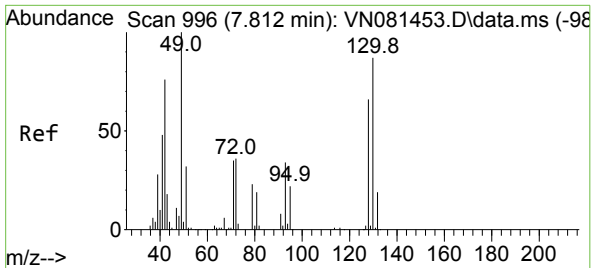
Tgt Ion: 77 Resp: 270132  
 Ion Ratio Lower Upper  
 77 100  
 97 0.0 11.5 34.5#



#27  
 cis-1,2-Dichloroethene  
 Concen: 0.549 ug/l  
 RT: 7.483 min Scan# 940  
 Delta R.T. -0.006 min  
 Lab File: VN081730.D  
 Acq: 12 Apr 2024 20:07

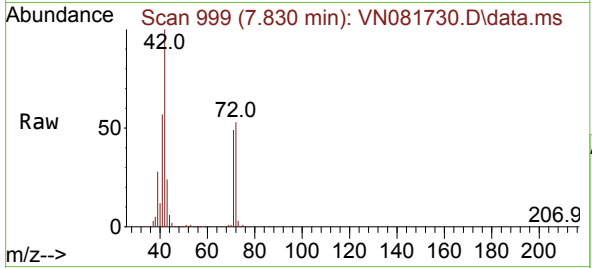
Tgt Ion: 96 Resp: 3216  
 Ion Ratio Lower Upper  
 96 100  
 61 0.0 0.0 325.4  
 98 55.5 0.0 130.4



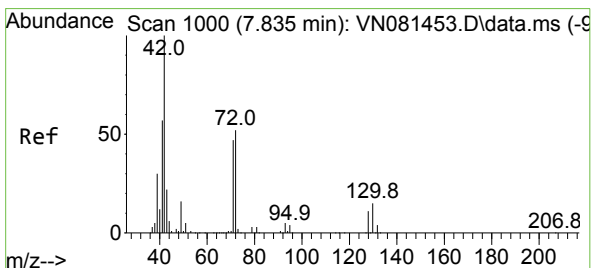
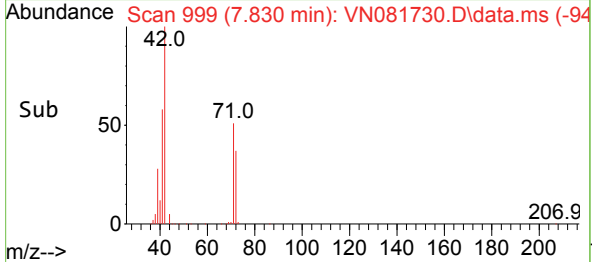
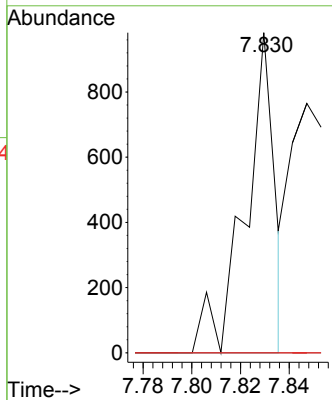


#28  
 Bromochloromethane  
 Concen: 0.224 ug/l  
 RT: 7.830 min Scan# 996  
 Delta R.T. 0.018 min  
 Lab File: VN081730.D  
 Acq: 12 Apr 2024 20:07

Instrument :  
 MSVOA\_N  
 ClientSampleId :

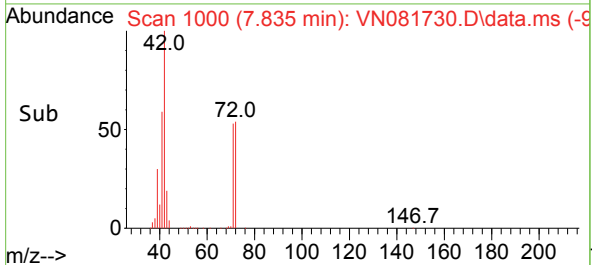
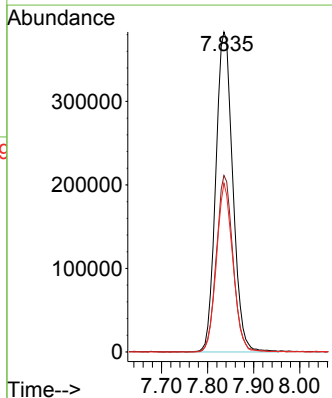
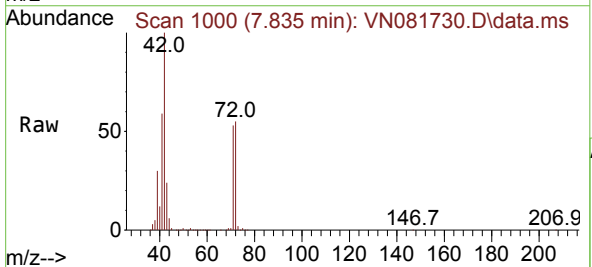


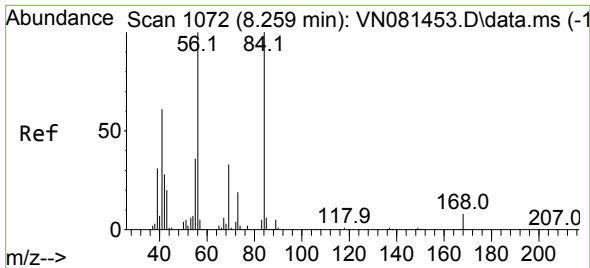
Tgt Ion	Resp	Lower	Upper
49	100		
129	0.0	0.0	1.6
130	0.0	42.3	63.5#



#29  
 Tetrahydrofuran  
 Concen: 523.769 ug/l  
 RT: 7.835 min Scan# 1000  
 Delta R.T. 0.000 min  
 Lab File: VN081730.D  
 Acq: 12 Apr 2024 20:07

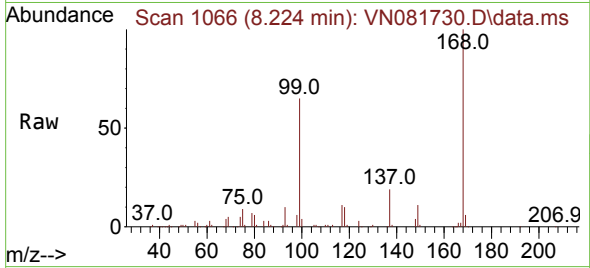
Tgt Ion	Resp	Lower	Upper
42	100		
72	54.0	31.1	46.7#
71	50.8	28.3	42.5#





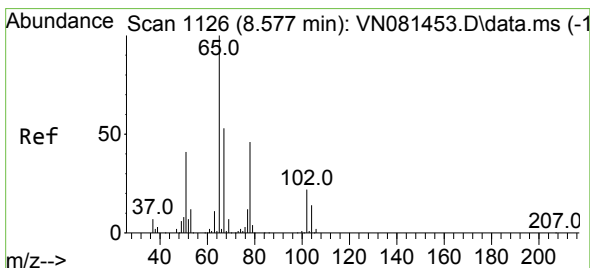
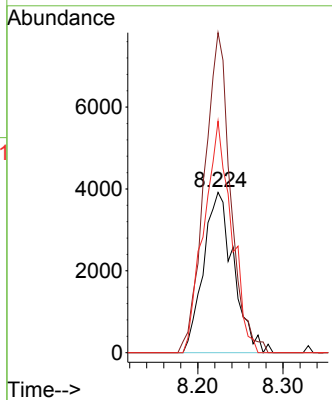
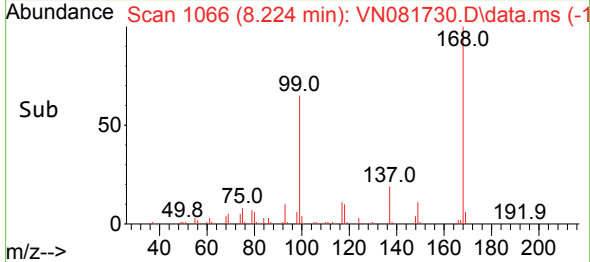
#31  
 Cyclohexane  
 Concen: 1.179 ug/l  
 RT: 8.224 min Scan# 1066  
 Delta R.T. -0.035 min  
 Lab File: VN081730.D  
 Acq: 12 Apr 2024 20:07

Instrument :  
 MSVOA\_N  
 ClientSampleId :

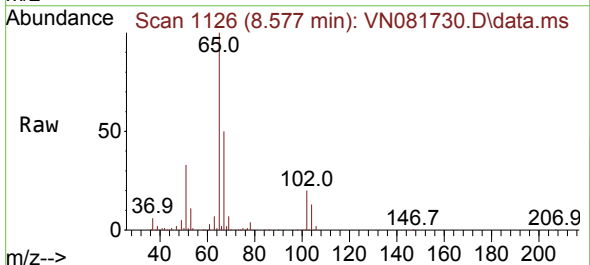


Tgt Ion: 56 Resp: 9635

Ion	Ratio	Lower	Upper
56	100		
69	199.6	20.1	30.1#
84	144.4	56.9	85.3#

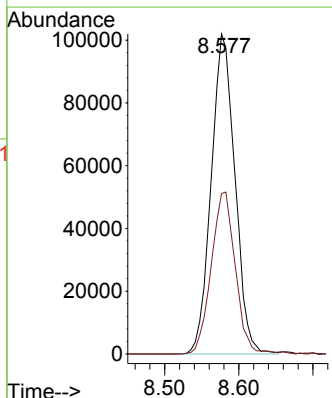
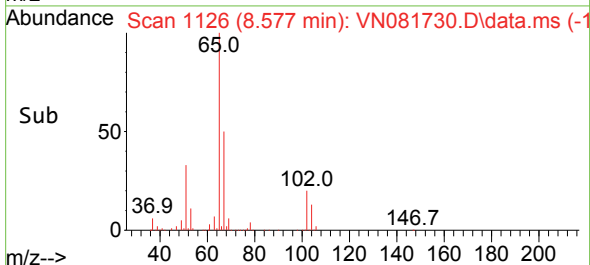


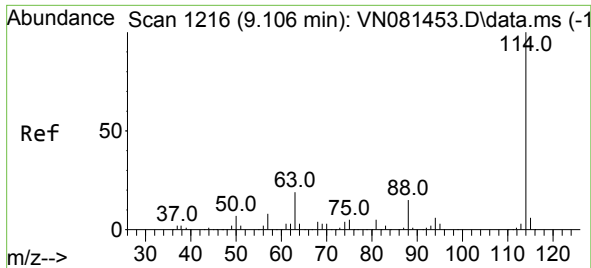
#33  
 1,2-Dichloroethane-d4  
 Concen: 45.208 ug/l  
 RT: 8.577 min Scan# 1126  
 Delta R.T. 0.000 min  
 Lab File: VN081730.D  
 Acq: 12 Apr 2024 20:07



Tgt Ion: 65 Resp: 226954

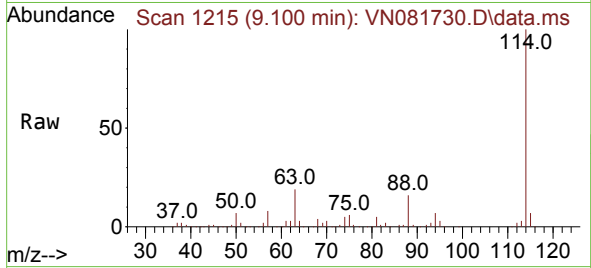
Ion	Ratio	Lower	Upper
65	100		
67	51.4	0.0	102.4



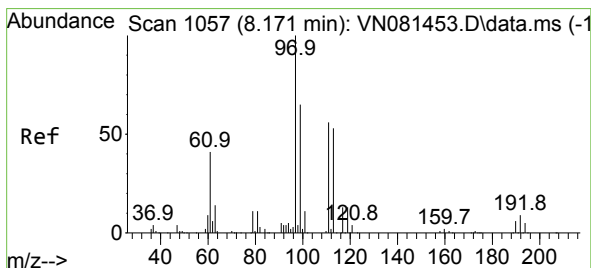
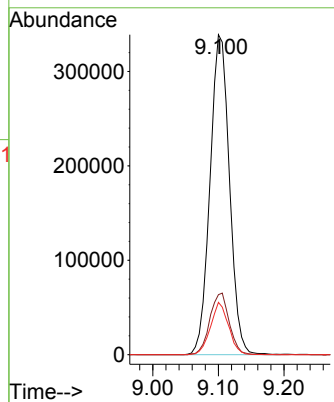
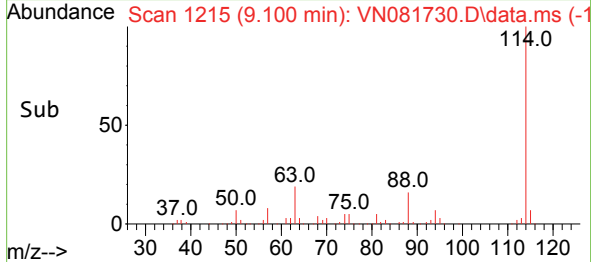


#34  
 1,4-Difluorobenzene  
 Concen: 50.000 ug/l  
 RT: 9.100 min Scan# 11  
 Delta R.T. -0.006 min  
 Lab File: VN081730.D  
 Acq: 12 Apr 2024 20:07

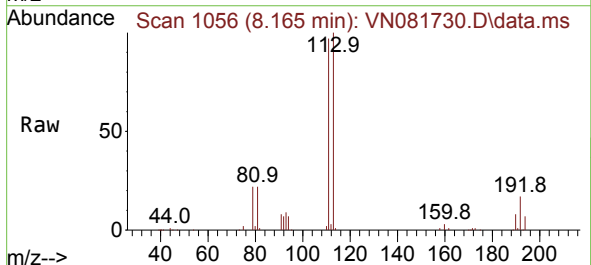
Instrument :  
 MSVOA\_N  
 ClientSampleId :



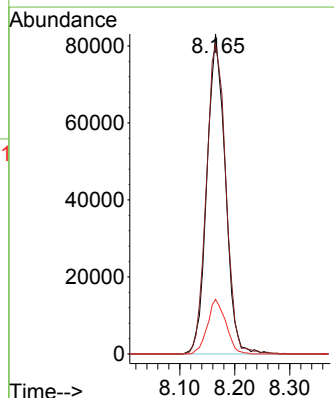
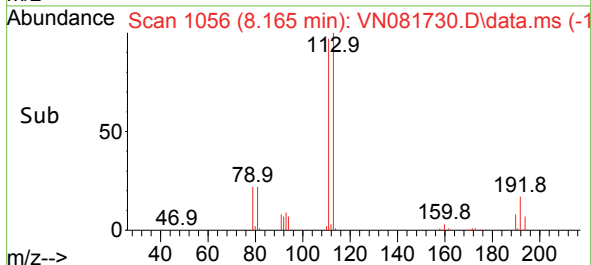
Tgt Ion:114 Resp: 697637  
 Ion Ratio Lower Upper  
 114 100  
 63 18.8 0.0 48.0  
 88 16.4 0.0 34.8

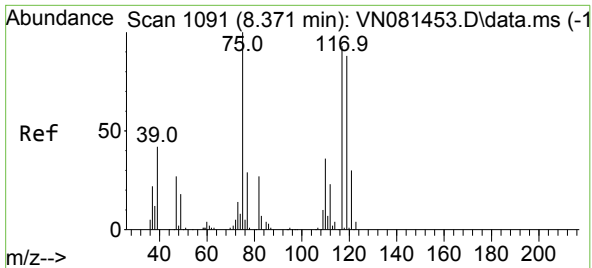


#35  
 Dibromofluoromethane  
 Concen: 43.798 ug/l  
 RT: 8.165 min Scan# 1056  
 Delta R.T. -0.006 min  
 Lab File: VN081730.D  
 Acq: 12 Apr 2024 20:07



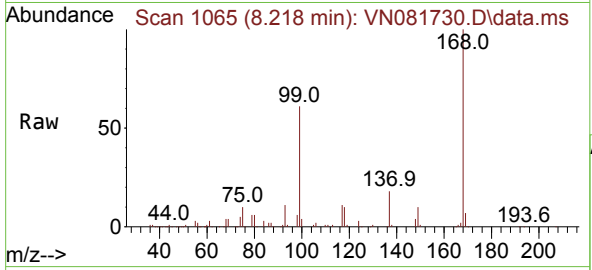
Tgt Ion:113 Resp: 192833  
 Ion Ratio Lower Upper  
 113 100  
 111 103.0 82.2 123.4  
 192 17.1 12.5 18.7





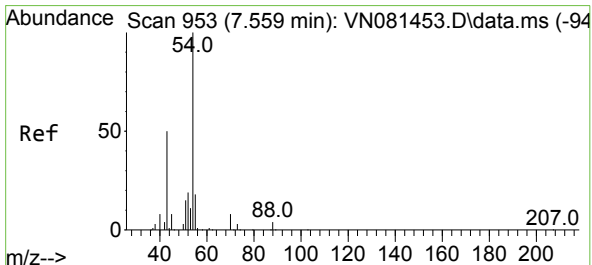
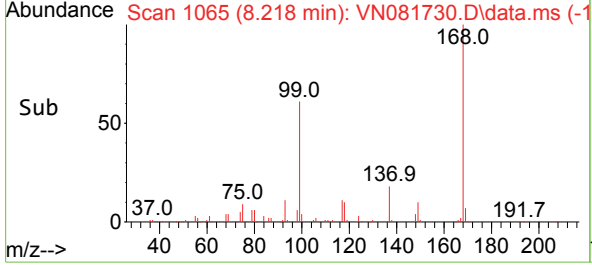
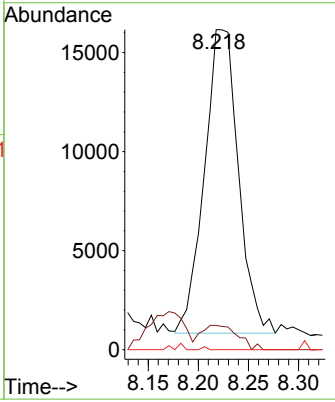
#36  
 1,1-Dichloropropene  
 Concen: 4.888 ug/l  
 RT: 8.218 min Scan# 1091  
 Delta R.T. -0.153 min  
 Lab File: VN081730.D  
 Acq: 12 Apr 2024 20:07

Instrument : MSVOA\_N  
 ClientSampleId :



Tgt Ion: 75 Resp: 36218

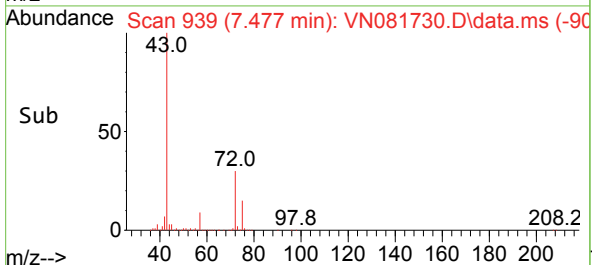
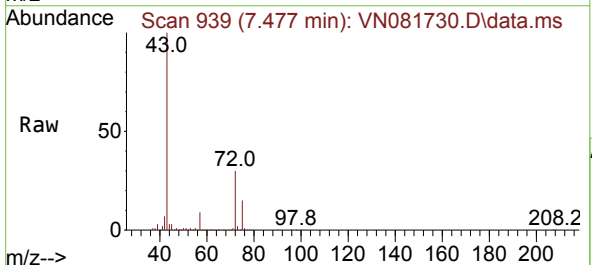
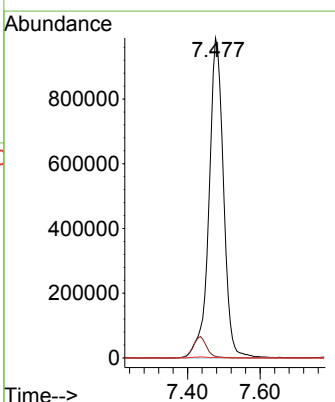
Ion	Ratio	Lower	Upper
75	100		
110	8.7	16.0	48.0#
77	0.0	25.8	38.6#

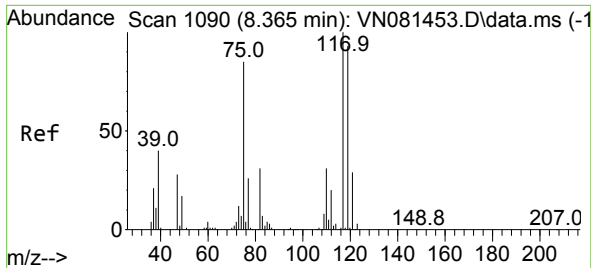


#37  
 Ethyl Acetate  
 Concen: 435.378 ug/l  
 RT: 7.477 min Scan# 939  
 Delta R.T. -0.082 min  
 Lab File: VN081730.D  
 Acq: 12 Apr 2024 20:07

Tgt Ion: 43 Resp: 2762326

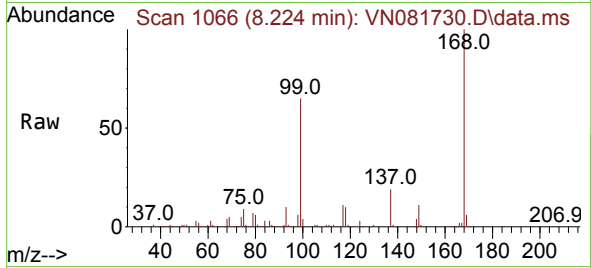
Ion	Ratio	Lower	Upper
43	100		
61	0.0	10.6	15.8#
70	0.0	8.0	12.0#



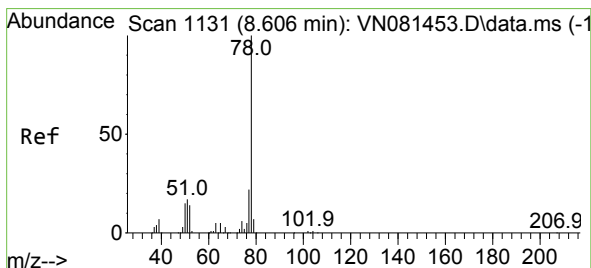
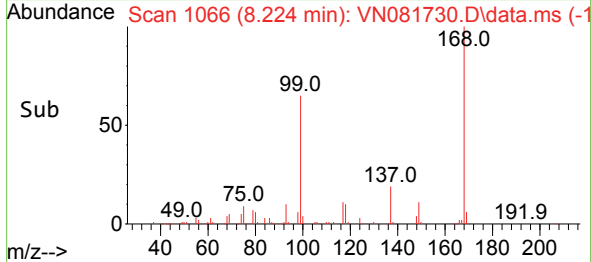
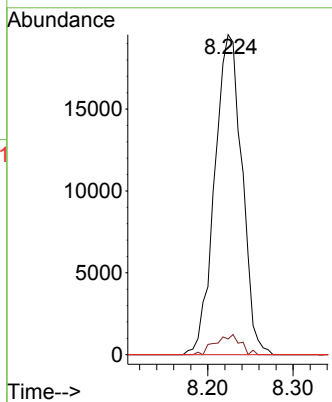


#38  
 Carbon Tetrachloride  
 Concen: 5.356 ug/l  
 RT: 8.224 min Scan# 1066  
 Delta R.T. -0.141 min  
 Lab File: VN081730.D  
 Acq: 12 Apr 2024 20:07

Instrument : MSVOA\_N  
 ClientSampleId :

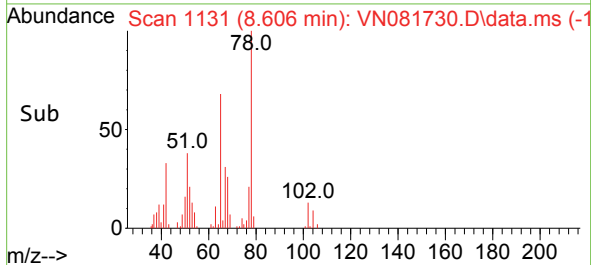
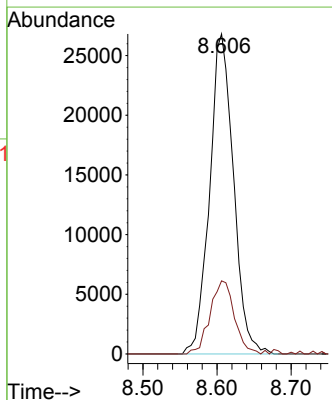
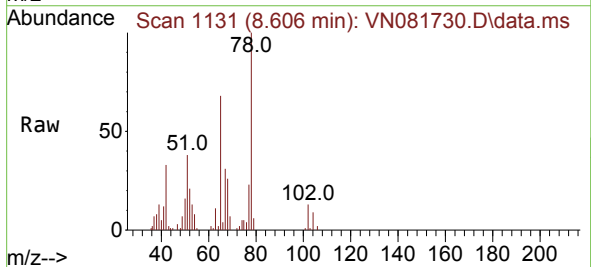


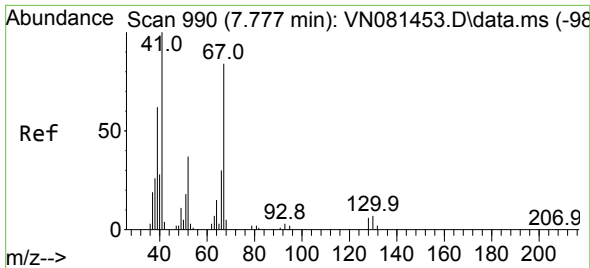
Tgt Ion: 117 Resp: 43476  
 Ion Ratio Lower Upper  
 117 100  
 119 4.9 73.4 110.2#  
 121 0.0 24.4 36.6#



#40  
 Benzene  
 Concen: 2.770 ug/l  
 RT: 8.606 min Scan# 1131  
 Delta R.T. 0.000 min  
 Lab File: VN081730.D  
 Acq: 12 Apr 2024 20:07

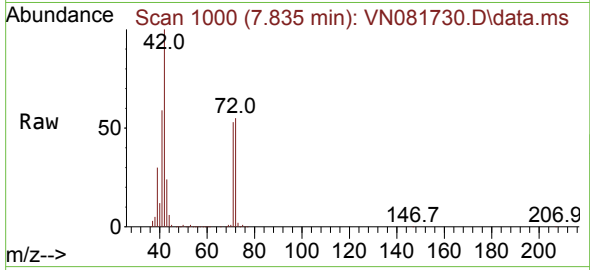
Tgt Ion: 78 Resp: 60014  
 Ion Ratio Lower Upper  
 78 100  
 77 22.8 20.4 30.6



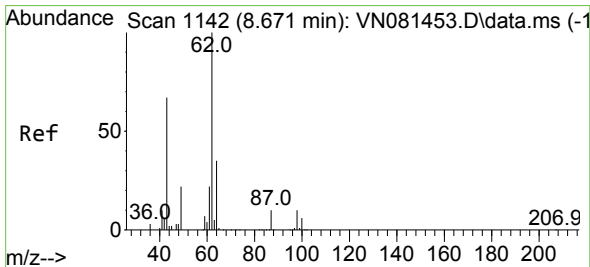
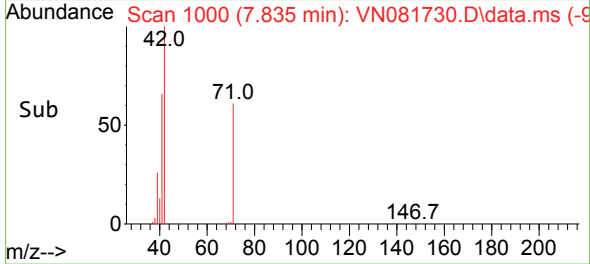
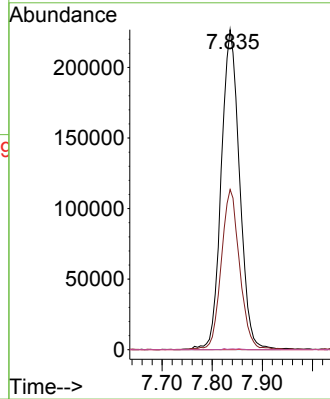


#41  
 Methacrylonitrile  
 Concen: 171.574 ug/l  
 RT: 7.835 min Scan# 10  
 Delta R.T. 0.059 min  
 Lab File: VN081730.D  
 Acq: 12 Apr 2024 20:07

Instrument :  
 MSVOA\_N  
 ClientSampleId :

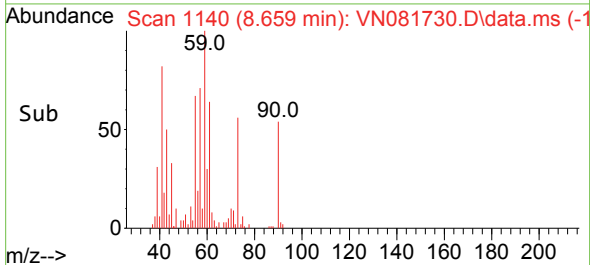
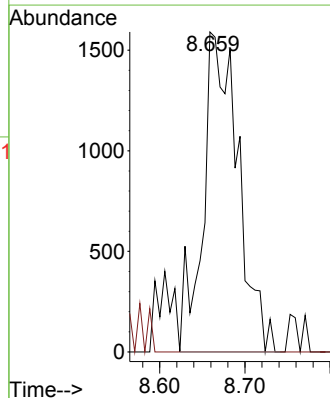
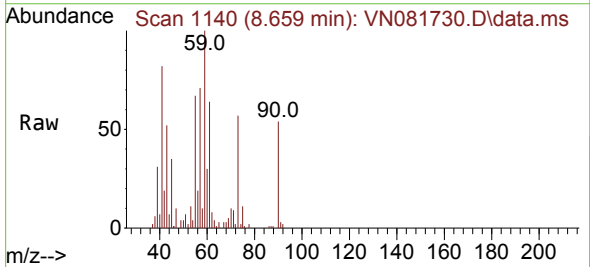


Tgt Ion: 41 Resp: 575686  
 Ion Ratio Lower Upper  
 41 100  
 39 49.9 48.4 72.6  
 67 0.0 56.8 85.2#  
 52 0.1 25.0 37.4#

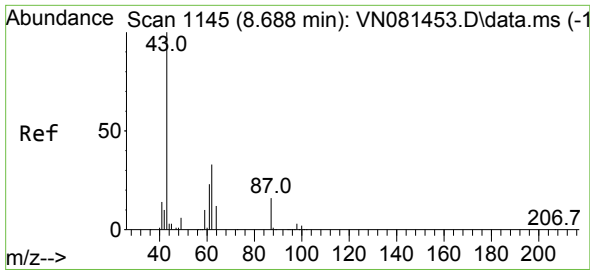


#42  
 1,2-Dichloroethane  
 Concen: 0.595 ug/l  
 RT: 8.659 min Scan# 1140  
 Delta R.T. -0.012 min  
 Lab File: VN081730.D  
 Acq: 12 Apr 2024 20:07

Tgt Ion: 62 Resp: 4537  
 Ion Ratio Lower Upper  
 62 100  
 98 0.0 0.0 18.0

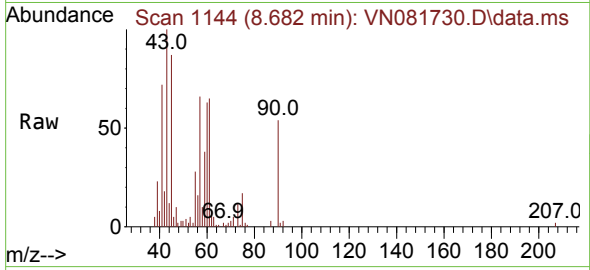




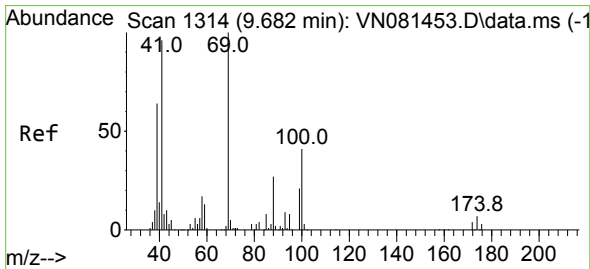
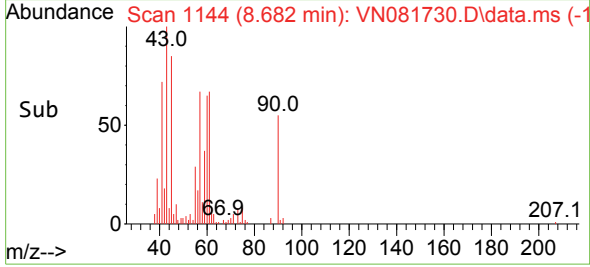
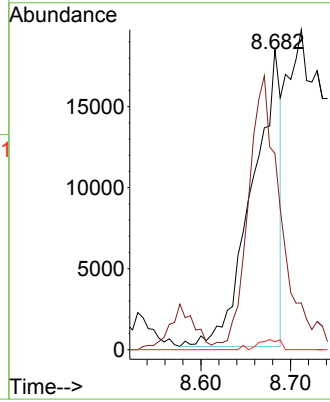


#43  
 Isopropyl Acetate  
 Concen: 3.840 ug/l  
 RT: 8.682 min Scan# 1144  
 Delta R.T. -0.006 min  
 Lab File: VN081730.D  
 Acq: 12 Apr 2024 20:07

Instrument : MSVOA\_N  
 ClientSampleId :

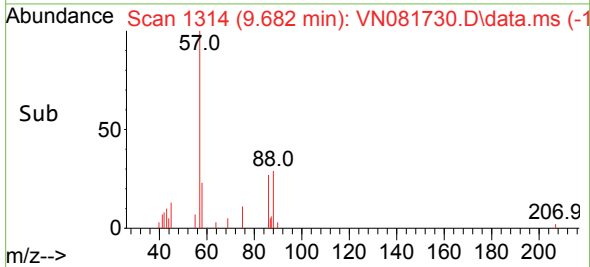
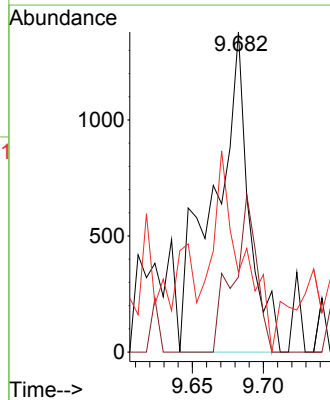
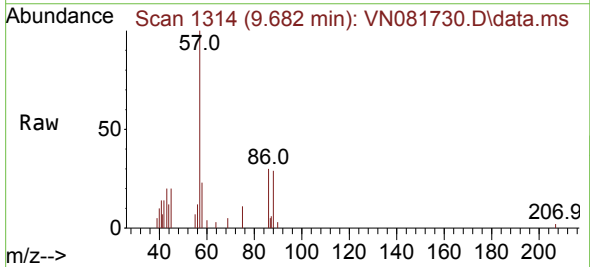


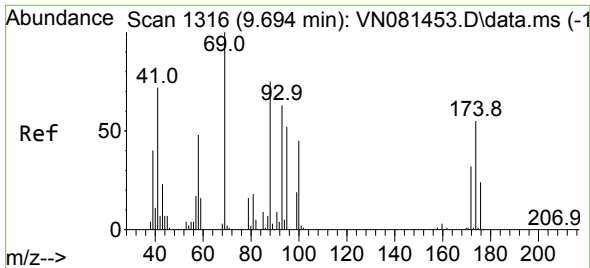
Tgt Ion: 43 Resp: 40382  
 Ion Ratio Lower Upper  
 43 100  
 61 101.7 19.9 29.9#  
 87 2.7 9.0 13.6#



#48  
 Methyl methacrylate  
 Concen: 0.492 ug/l  
 RT: 9.682 min Scan# 1314  
 Delta R.T. 0.000 min  
 Lab File: VN081730.D  
 Acq: 12 Apr 2024 20:07

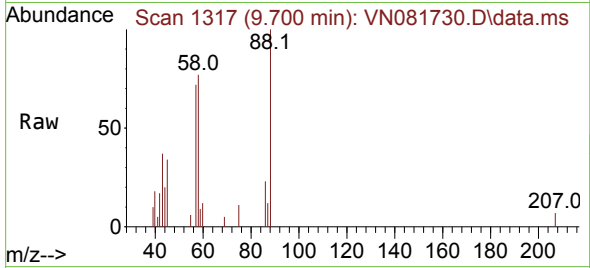
Tgt Ion: 41 Resp: 2385  
 Ion Ratio Lower Upper  
 41 100  
 69 32.8 62.2 93.2#  
 39 52.2 47.6 71.4



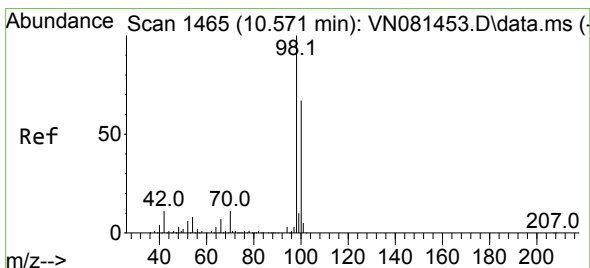
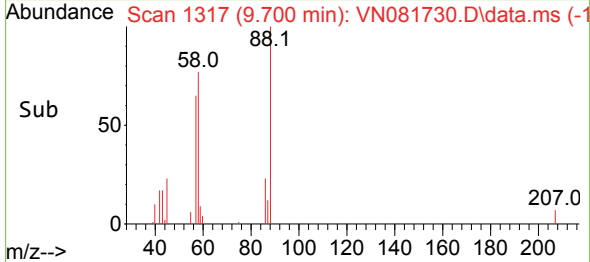
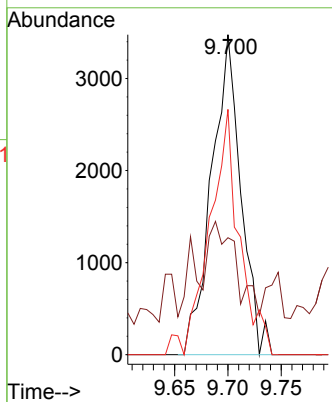


#49  
 1,4-Dioxane  
 Concen: 57.029 ug/l  
 RT: 9.700 min Scan# 11  
 Delta R.T. 0.006 min  
 Lab File: VN081730.D  
 Acq: 12 Apr 2024 20:07

Instrument :  
 MSVOA\_N  
 ClientSampleId :

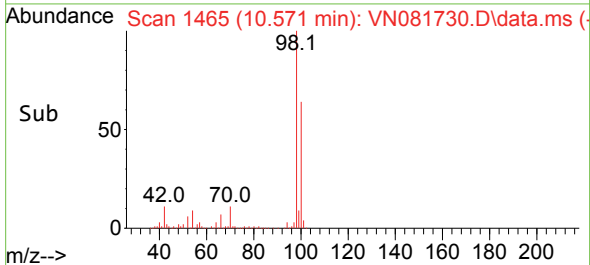
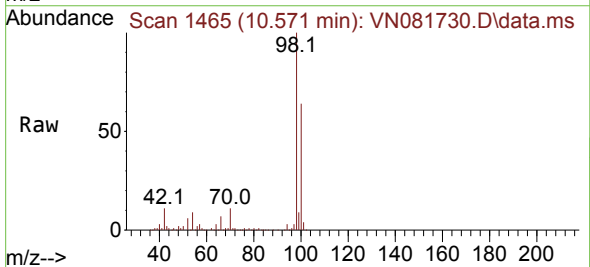
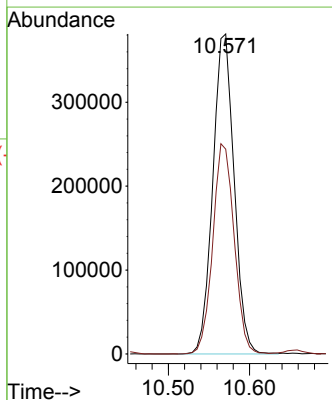


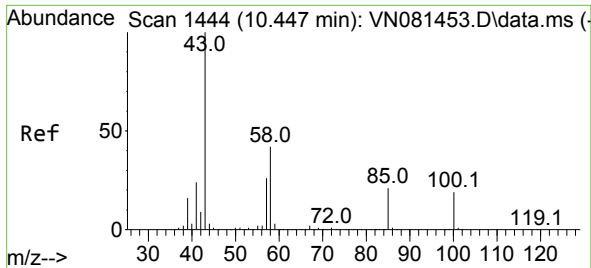
Tgt Ion: 88 Resp: 6648  
 Ion Ratio Lower Upper  
 88 100  
 43 28.0 30.1 45.1#  
 58 78.6 63.9 95.9



#50  
 Toluene-d8  
 Concen: 43.740 ug/l  
 RT: 10.571 min Scan# 1465  
 Delta R.T. 0.000 min  
 Lab File: VN081730.D  
 Acq: 12 Apr 2024 20:07

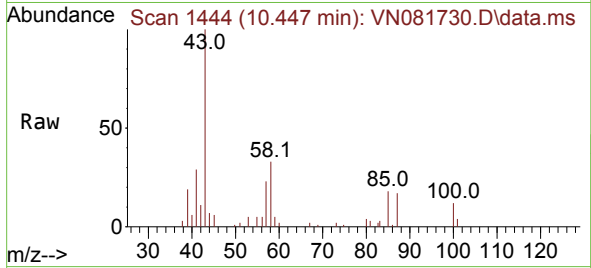
Tgt Ion: 98 Resp: 696145  
 Ion Ratio Lower Upper  
 98 100  
 100 65.9 51.4 77.0



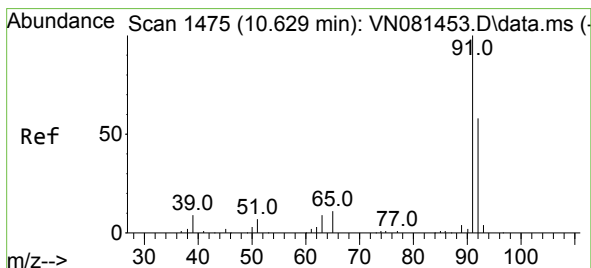
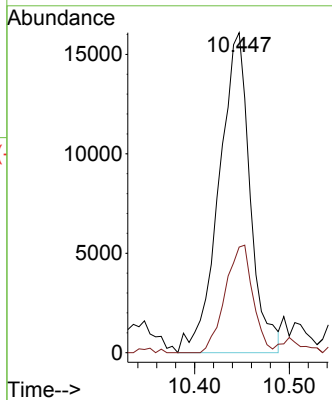
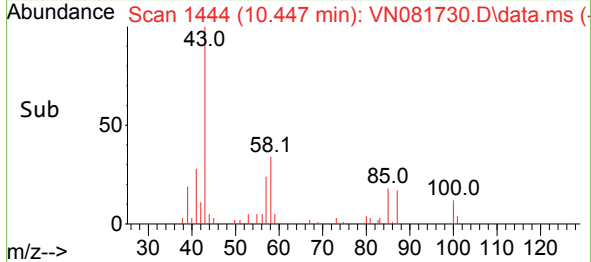


#51  
 4-Methyl-2-Pentanone  
 Concen: 5.714 ug/l  
 RT: 10.447 min Scan# 1444  
 Delta R.T. 0.000 min  
 Lab File: VN081730.D  
 Acq: 12 Apr 2024 20:07

Instrument : MSVOA\_N  
 ClientSampleId :

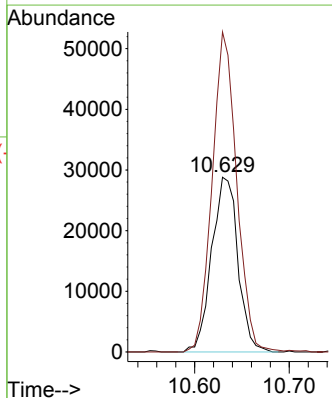
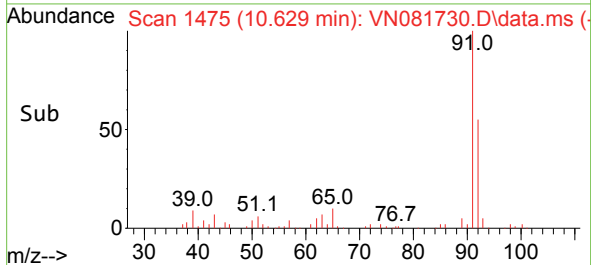
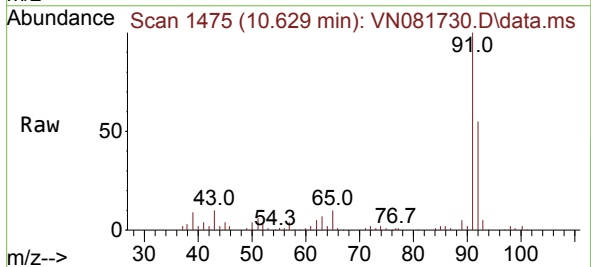


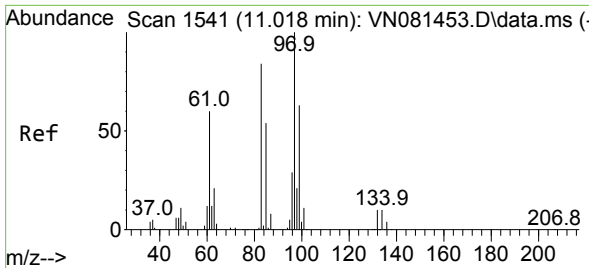
Tgt Ion: 43 Resp: 36669  
 Ion Ratio Lower Upper  
 43 100  
 58 29.9 29.4 44.0



#52  
 Toluene  
 Concen: 4.028 ug/l  
 RT: 10.629 min Scan# 1475  
 Delta R.T. 0.000 min  
 Lab File: VN081730.D  
 Acq: 12 Apr 2024 20:07

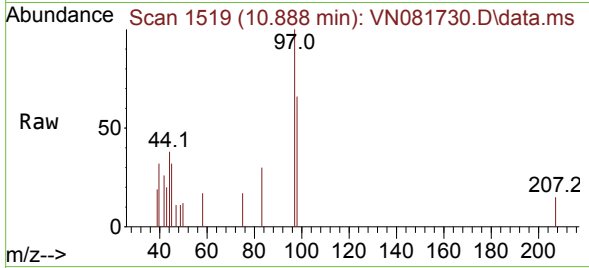
Tgt Ion: 92 Resp: 55463  
 Ion Ratio Lower Upper  
 92 100  
 91 171.9 139.4 209.0





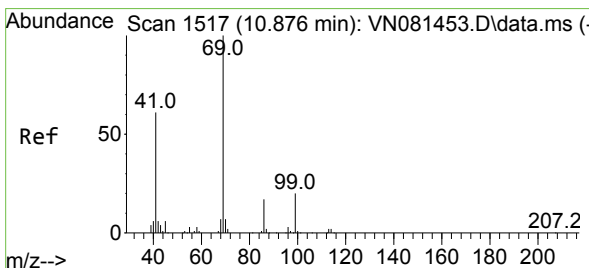
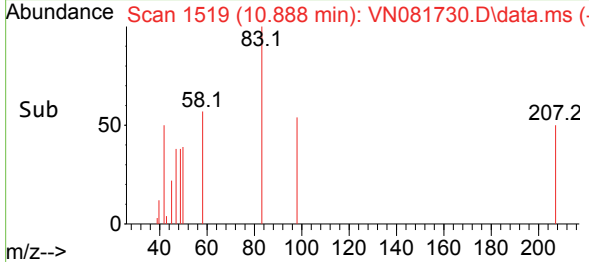
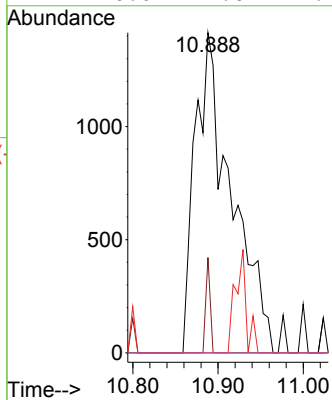
#55  
 1,1,2-Trichloroethane  
 Concen: 0.757 ug/l  
 RT: 10.888 min Scan# 1503  
 Delta R.T. -0.129 min  
 Lab File: VN081730.D  
 Acq: 12 Apr 2024 20:07

Instrument : MSVOA\_N  
 ClientSampleId :



Tgt Ion: 97 Resp: 4192

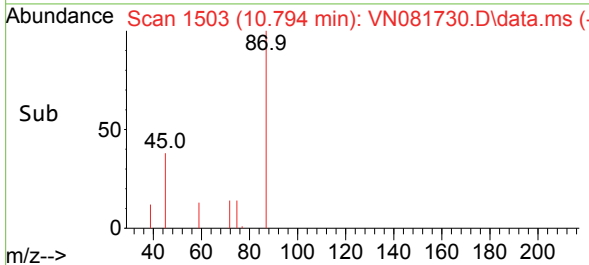
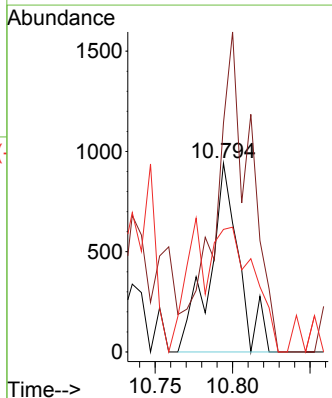
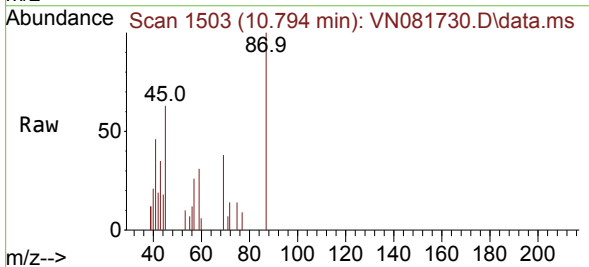
Ion	Ratio	Lower	Upper
97	100		
83	29.8	72.9	109.3#
85	0.0	50.2	75.2#
99	0.0	49.6	74.4#

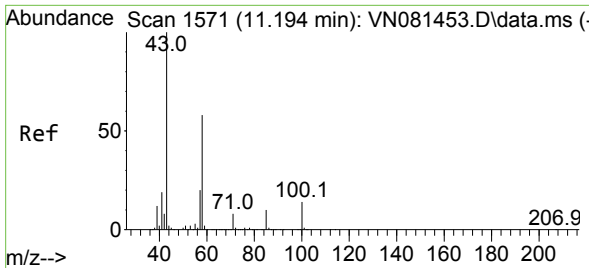


#56  
 Ethyl methacrylate  
 Concen: 0.734 ug/l  
 RT: 10.794 min Scan# 1503  
 Delta R.T. -0.082 min  
 Lab File: VN081730.D  
 Acq: 12 Apr 2024 20:07

Tgt Ion: 69 Resp: 1227

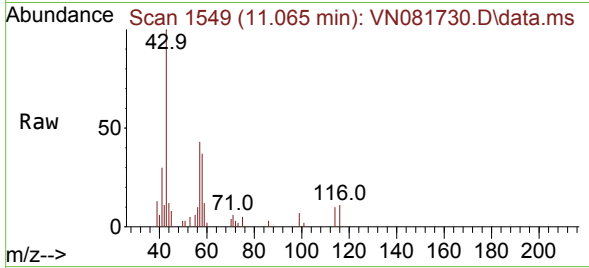
Ion	Ratio	Lower	Upper
69	100		
41	197.6	61.0	91.6#
39	92.0	31.8	47.6#



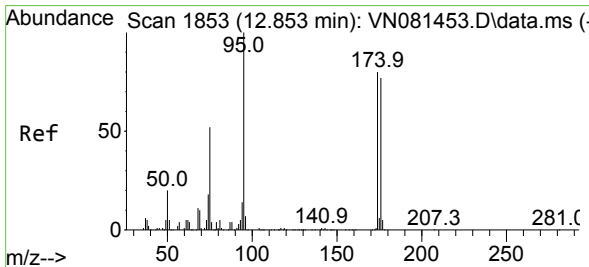
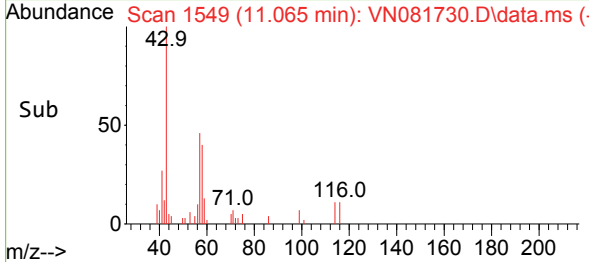
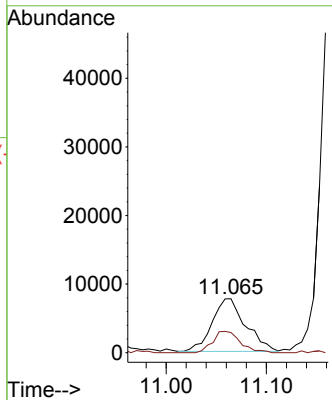


#59  
 2-Hexanone  
 Concen: 3.767 ug/l  
 RT: 11.065 min Scan# 1111  
 Delta R.T. -0.129 min  
 Lab File: VN081730.D  
 Acq: 12 Apr 2024 20:07

Instrument : MSVOA\_N  
 ClientSampleId :

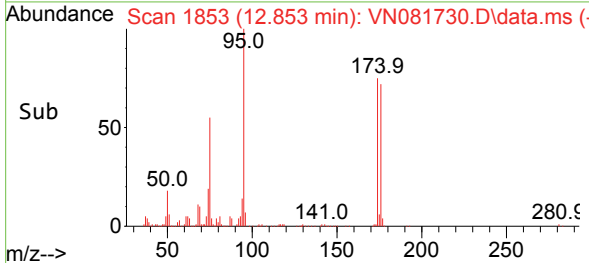
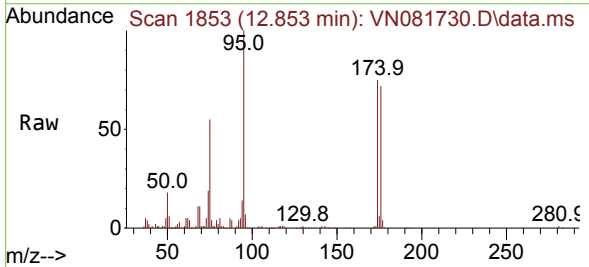
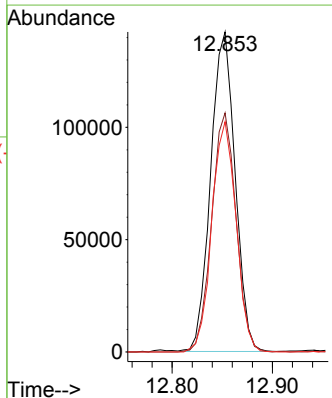


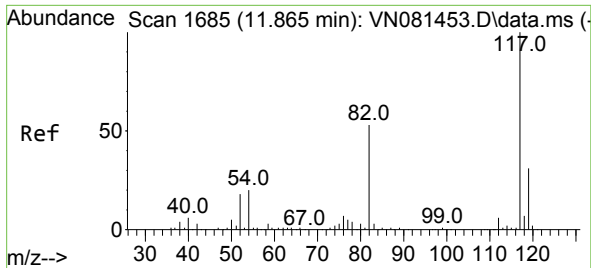
Tgt Ion: 43 Resp: 17872  
 Ion Ratio Lower Upper  
 43 100  
 58 33.4 25.9 77.8



#62  
 4-Bromofluorobenzene  
 Concen: 43.016 ug/l  
 RT: 12.853 min Scan# 1853  
 Delta R.T. 0.000 min  
 Lab File: VN081730.D  
 Acq: 12 Apr 2024 20:07

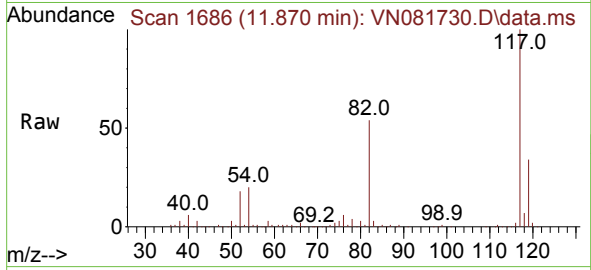
Tgt Ion: 95 Resp: 241233  
 Ion Ratio Lower Upper  
 95 100  
 174 74.5 0.0 120.4  
 176 71.6 0.0 121.0





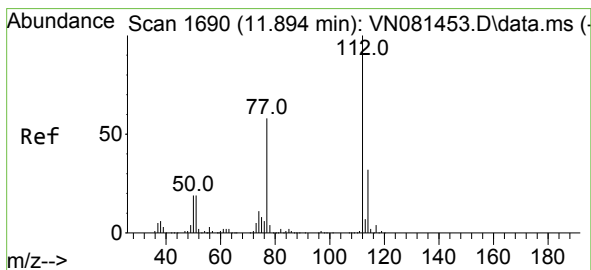
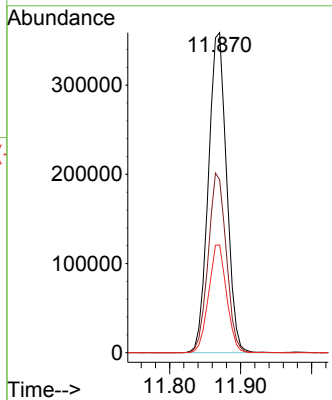
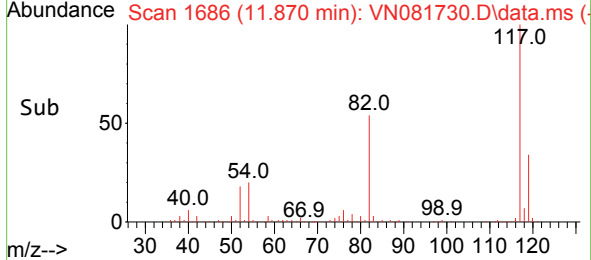
#63  
 Chlorobenzene-d5  
 Concen: 50.000 ug/l  
 RT: 11.870 min Scan# 1686  
 Delta R.T. 0.006 min  
 Lab File: VN081730.D  
 Acq: 12 Apr 2024 20:07

Instrument :  
 MSVOA\_N  
 ClientSampleId :

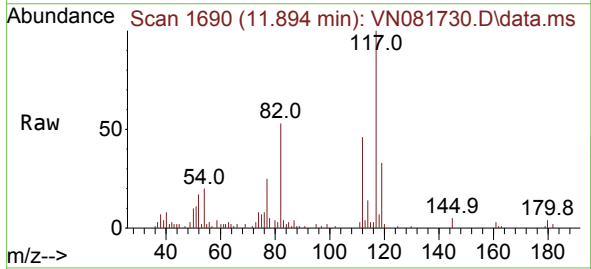


Tgt Ion:117 Resp: 638378

Ion	Ratio	Lower	Upper
117	100		
82	54.0	52.7	79.1
119	33.7	25.3	37.9

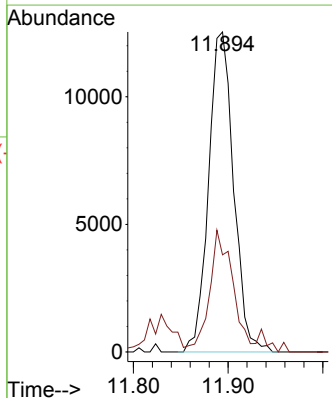
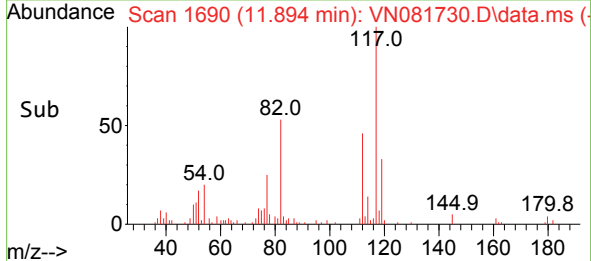


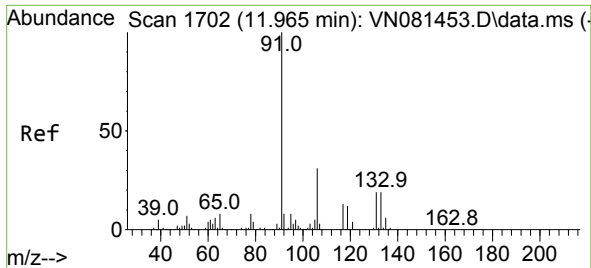
#65  
 Chlorobenzene  
 Concen: 1.524 ug/l  
 RT: 11.894 min Scan# 1690  
 Delta R.T. 0.000 min  
 Lab File: VN081730.D  
 Acq: 12 Apr 2024 20:07



Tgt Ion:112 Resp: 23004

Ion	Ratio	Lower	Upper
112	100		
114	30.4	23.7	35.5

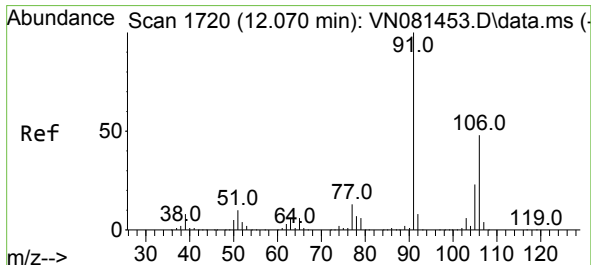
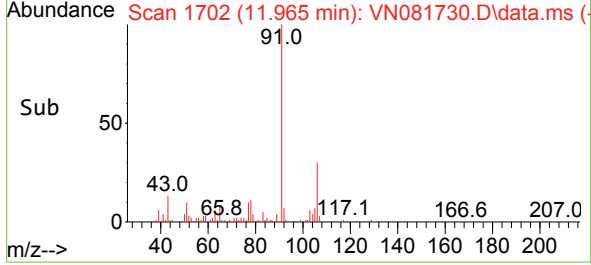
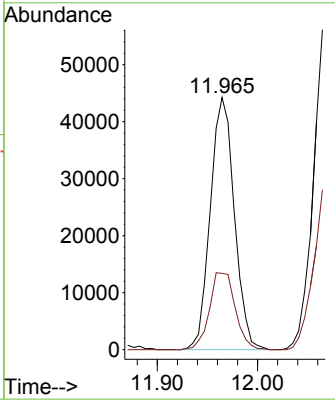
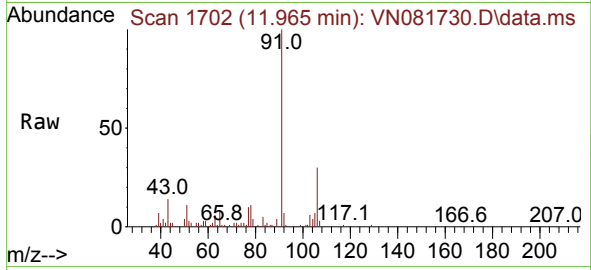




#67  
 Ethyl Benzene  
 Concen: 2.807 ug/l  
 RT: 11.965 min Scan# 1702  
 Delta R.T. 0.000 min  
 Lab File: VN081730.D  
 Acq: 12 Apr 2024 20:07

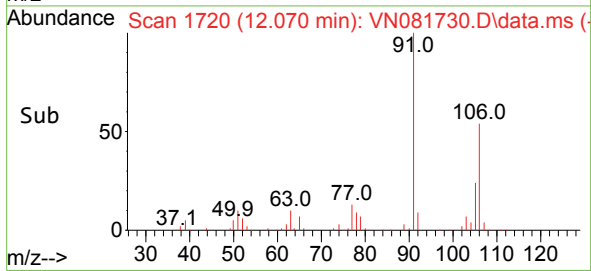
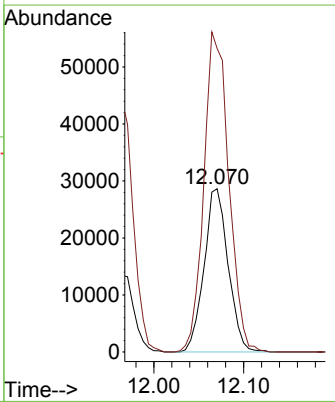
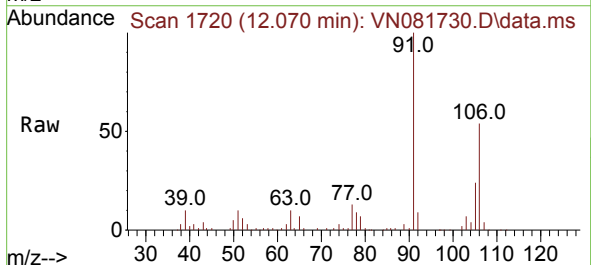
Instrument : MSVOA\_N  
 ClientSampleId :

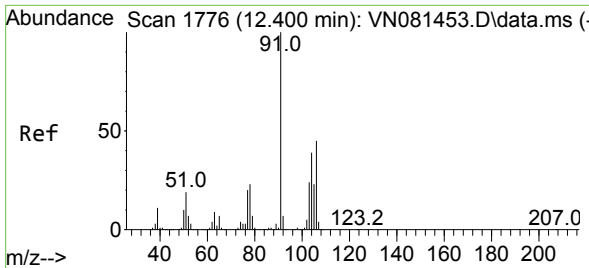
Tgt Ion: 91 Resp: 73584  
 Ion Ratio Lower Upper  
 91 100  
 106 30.3 23.8 35.6



#68  
 m/p-Xylenes  
 Concen: 5.427 ug/l  
 RT: 12.070 min Scan# 1720  
 Delta R.T. 0.000 min  
 Lab File: VN081730.D  
 Acq: 12 Apr 2024 20:07

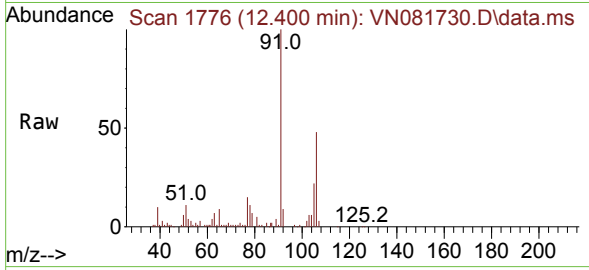
Tgt Ion: 106 Resp: 53330  
 Ion Ratio Lower Upper  
 106 100  
 91 202.9 169.0 253.6



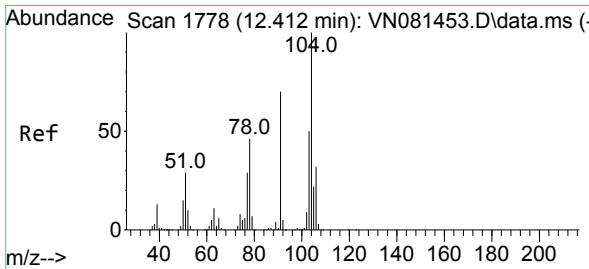
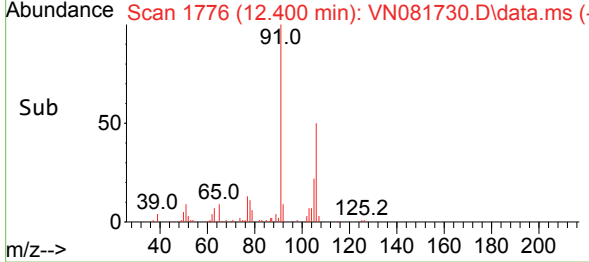
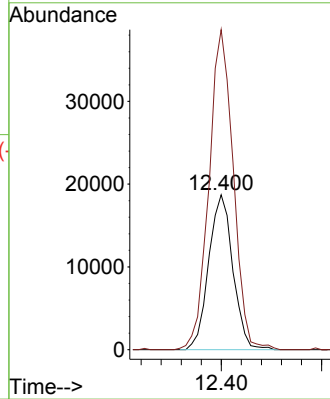


#69  
 o-Xylene  
 Concen: 3.247 ug/l  
 RT: 12.400 min Scan# 1776  
 Delta R.T. 0.000 min  
 Lab File: VN081730.D  
 Acq: 12 Apr 2024 20:07

Instrument : MSVOA\_N  
 ClientSampleId :

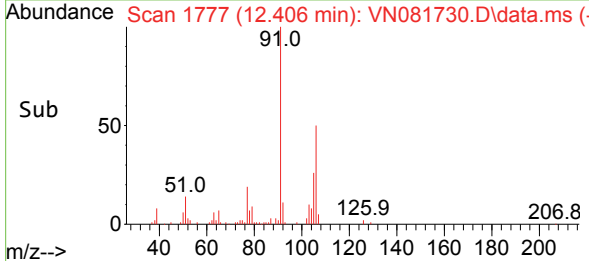
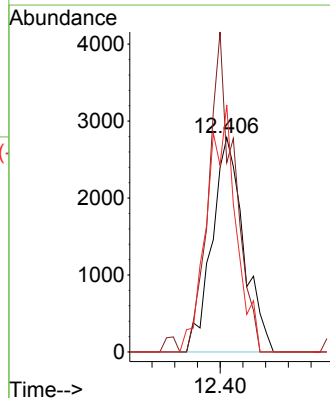
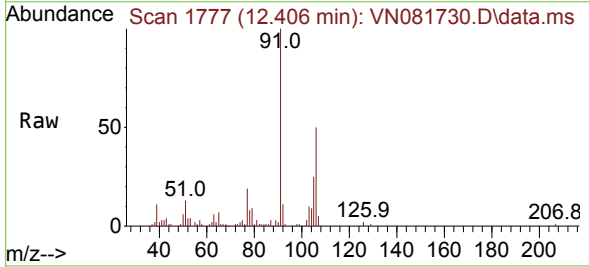


Tgt Ion:106 Resp: 31325  
 Ion Ratio Lower Upper  
 106 100  
 91 208.1 112.1 336.3

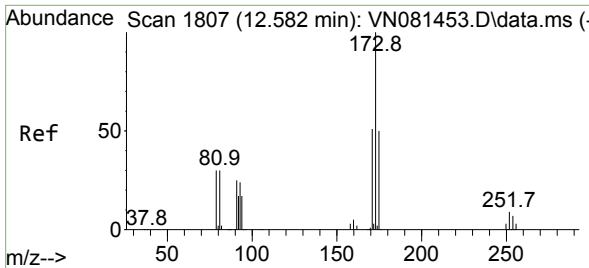


#70  
 Styrene  
 Concen: 0.347 ug/l  
 RT: 12.406 min Scan# 1777  
 Delta R.T. -0.006 min  
 Lab File: VN081730.D  
 Acq: 12 Apr 2024 20:07

Tgt Ion:104 Resp: 5404  
 Ion Ratio Lower Upper  
 104 100  
 78 120.9 43.8 65.8#  
 103 105.4 44.2 66.2#

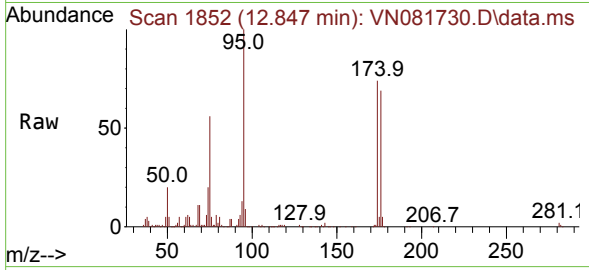




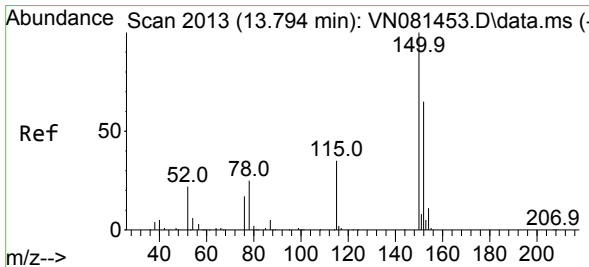
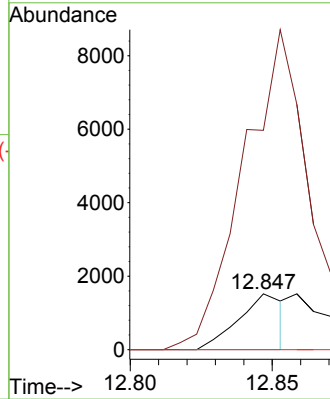
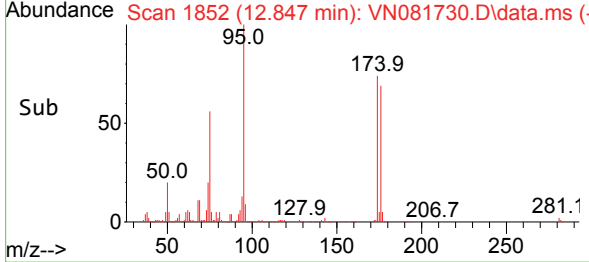


#71  
 Bromoform  
 Concen: 0.399 ug/l  
 RT: 12.847 min Scan# 1807  
 Delta R.T. 0.265 min  
 Lab File: VN081730.D  
 Acq: 12 Apr 2024 20:07

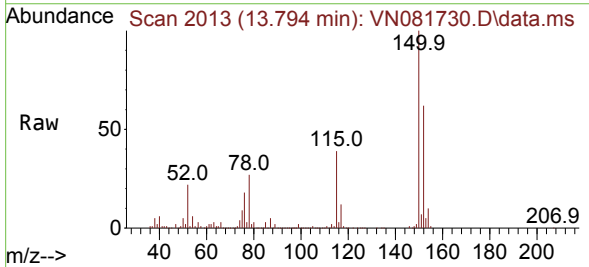
Instrument : MSVOA\_N  
 ClientSampleId :



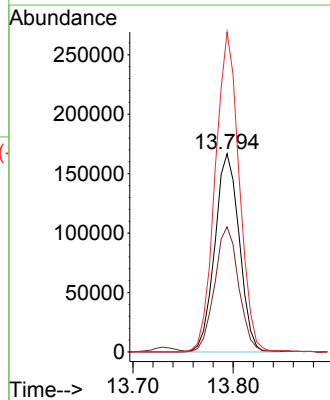
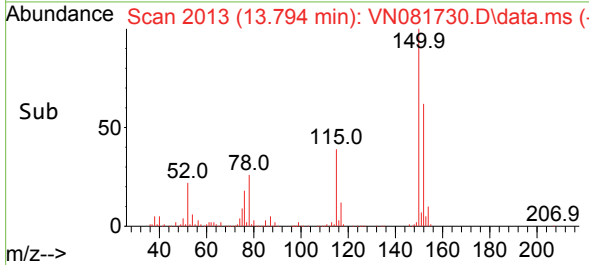
Tgt Ion:173 Resp: 1676  
 Ion Ratio Lower Upper  
 173 100  
 175 689.2 23.1 69.2#  
 254 0.0 0.0 0.0

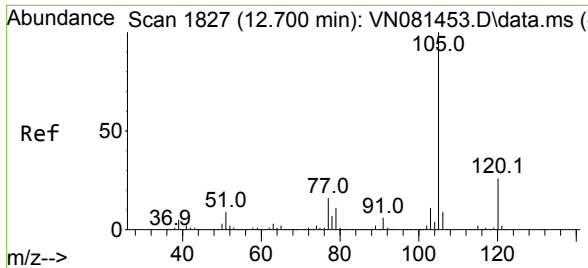


#72  
 1,4-Dichlorobenzene-d4  
 Concen: 50.000 ug/l  
 RT: 13.794 min Scan# 2013  
 Delta R.T. 0.000 min  
 Lab File: VN081730.D  
 Acq: 12 Apr 2024 20:07



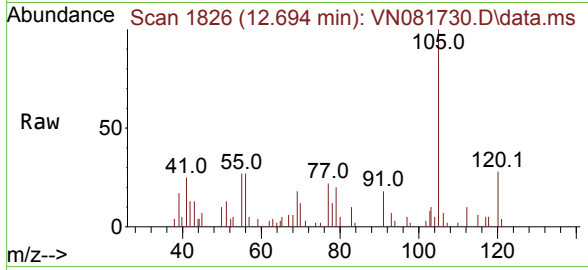
Tgt Ion:152 Resp: 282059  
 Ion Ratio Lower Upper  
 152 100  
 115 62.1 32.3 96.8  
 150 158.8 0.0 339.8



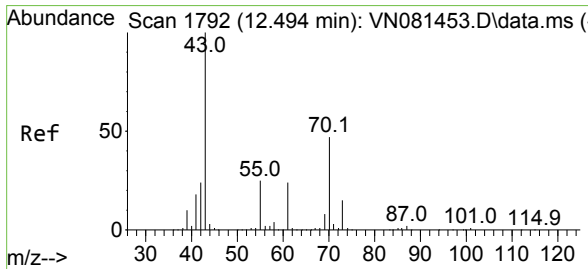
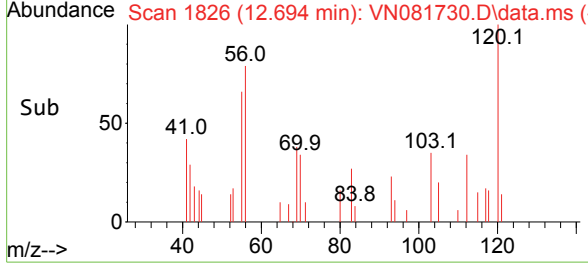
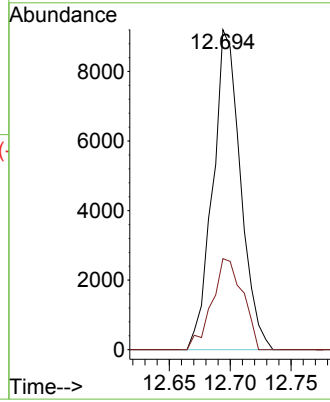


#73  
 Isopropylbenzene  
 Concen: 0.606 ug/l  
 RT: 12.694 min Scan# 1826  
 Delta R.T. -0.006 min  
 Lab File: VN081730.D  
 Acq: 12 Apr 2024 20:07

Instrument : MSVOA\_N  
 ClientSampleId :

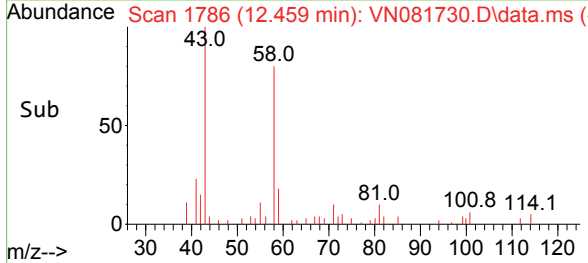
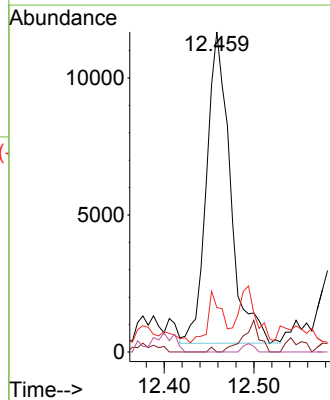
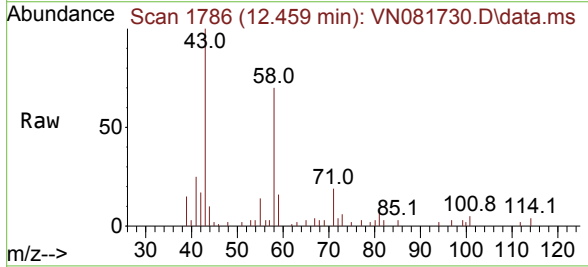


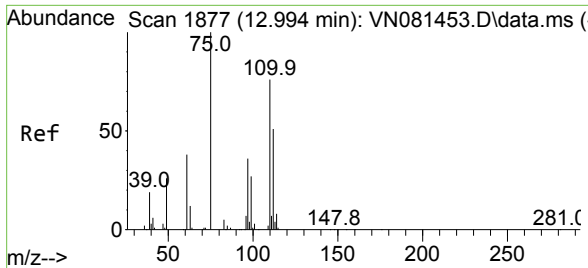
Tgt Ion:105 Resp: 14569  
 Ion Ratio Lower Upper  
 105 100  
 120 31.5 12.6 37.6



#74  
 N-amy1 acetate  
 Concen: 2.413 ug/l  
 RT: 12.459 min Scan# 1786  
 Delta R.T. -0.035 min  
 Lab File: VN081730.D  
 Acq: 12 Apr 2024 20:07

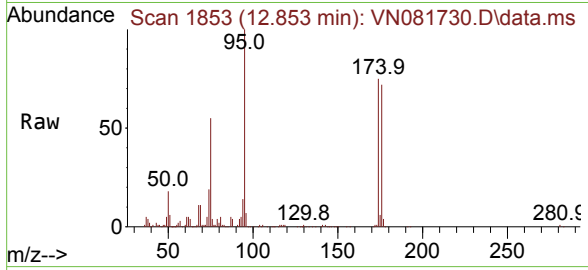
Tgt Ion: 43 Resp: 20997  
 Ion Ratio Lower Upper  
 43 100  
 70 0.0 30.1 45.1#  
 55 9.6 17.0 25.4#  
 61 0.0 17.5 26.3#



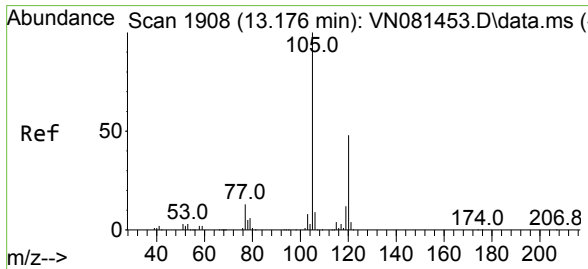
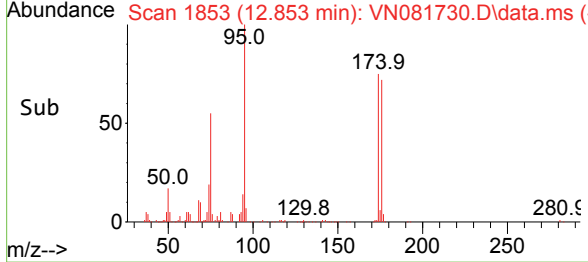
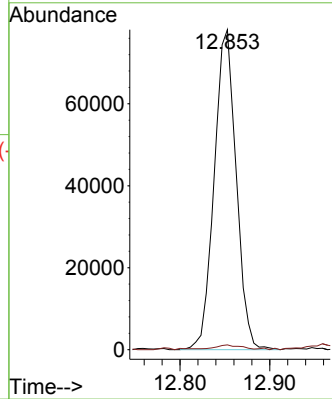


#76  
 1,2,3-Trichloropropane  
 Concen: 19.674 ug/l  
 RT: 12.853 min Scan# 1877  
 Delta R.T. -0.141 min  
 Lab File: VN081730.D  
 Acq: 12 Apr 2024 20:07

Instrument : MSVOA\_N  
 ClientSampleId :

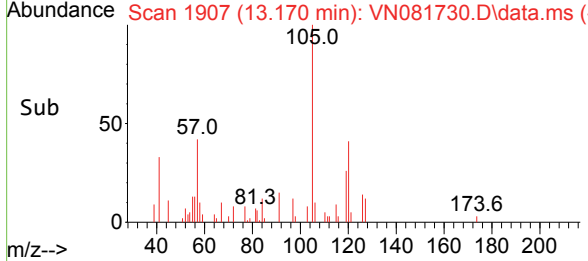
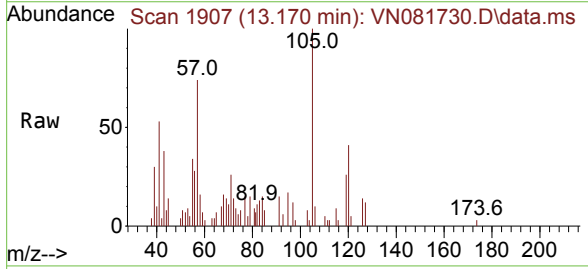
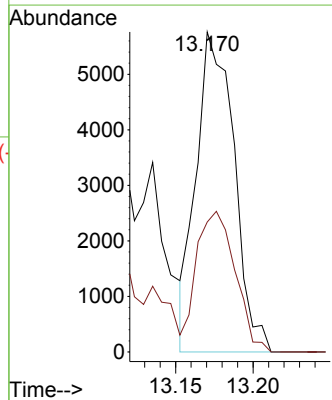


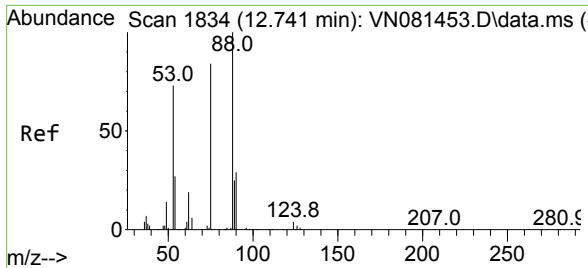
Tgt Ion: 75 Resp: 132739  
 Ion Ratio Lower Upper  
 75 100  
 77 1.5 91.0 272.8#



#80  
 1,3,5-Trimethylbenzene  
 Concen: 0.491 ug/l  
 RT: 13.170 min Scan# 1907  
 Delta R.T. -0.006 min  
 Lab File: VN081730.D  
 Acq: 12 Apr 2024 20:07

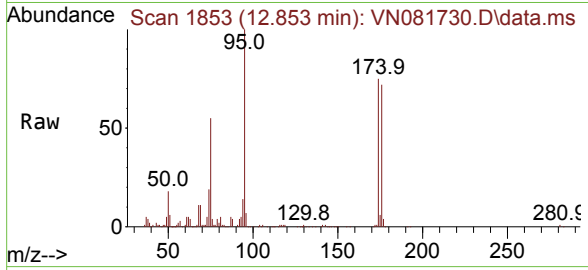
Tgt Ion: 105 Resp: 9748  
 Ion Ratio Lower Upper  
 105 100  
 120 45.3 23.0 69.0





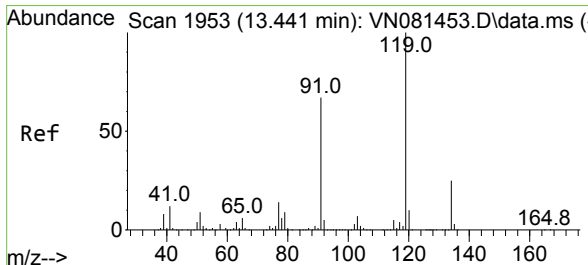
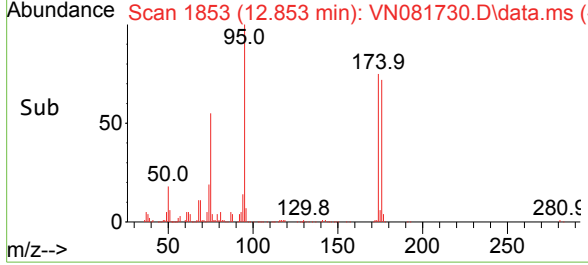
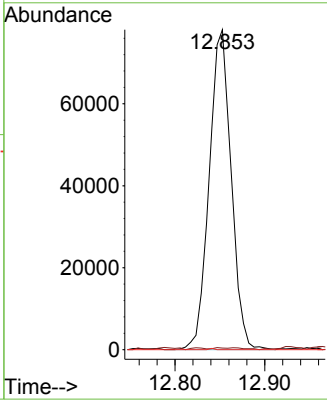
#81  
 trans-1,4-Dichloro-2-butene  
 Concen: 53.165 ug/l  
 RT: 12.853 min Scan# 1853  
 Delta R.T. 0.112 min  
 Lab File: VN081730.D  
 Acq: 12 Apr 2024 20:07

Instrument : MSVOA\_N  
 ClientSampleId :



Tgt Ion: 75 Resp: 132739

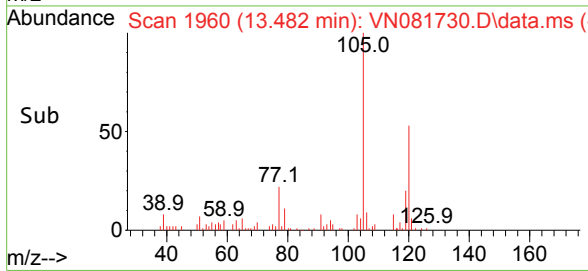
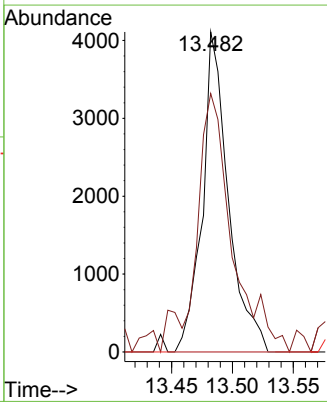
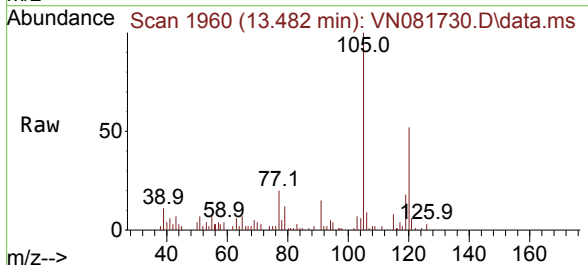
Ion	Ratio	Lower	Upper
75	100		
53	0.2	71.4	107.2#
89	0.1	33.4	50.0#

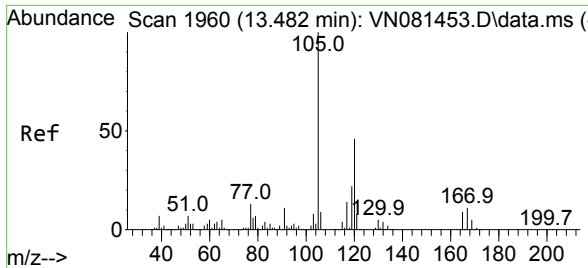


#83  
 tert-Butylbenzene  
 Concen: 0.357 ug/l  
 RT: 13.482 min Scan# 1960  
 Delta R.T. 0.041 min  
 Lab File: VN081730.D  
 Acq: 12 Apr 2024 20:07

Tgt Ion: 119 Resp: 6105

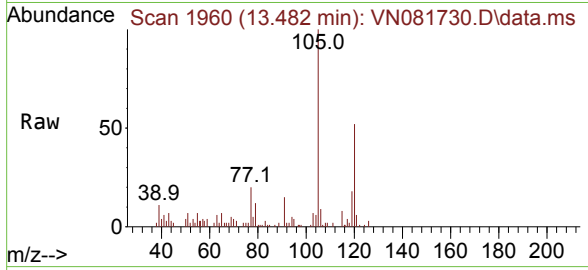
Ion	Ratio	Lower	Upper
119	100		
91	114.3	36.8	110.4#
134	0.0	12.4	37.4#



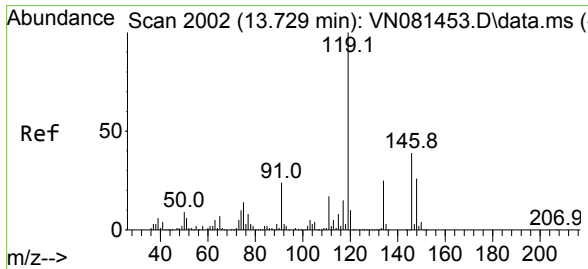
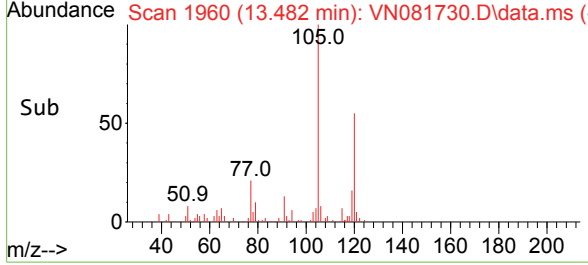
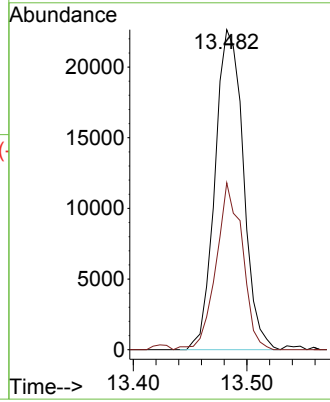


#84  
 1,2,4-Trimethylbenzene  
 Concen: 1.968 ug/l  
 RT: 13.482 min Scan# 1960  
 Delta R.T. 0.000 min  
 Lab File: VN081730.D  
 Acq: 12 Apr 2024 20:07

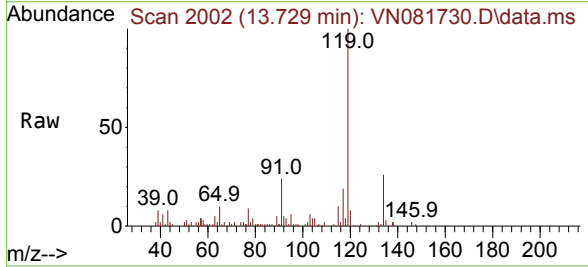
Instrument : MSVOA\_N  
 ClientSampleId :



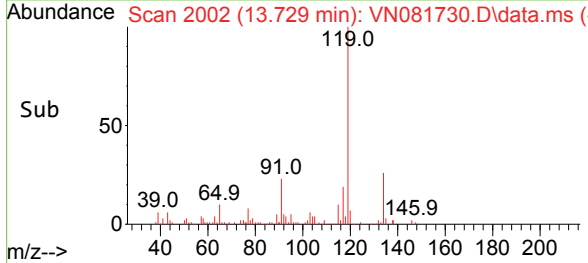
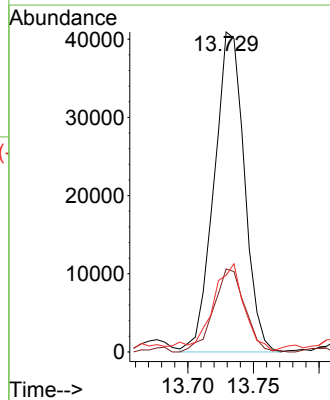
Tgt Ion:105 Resp: 39280  
 Ion Ratio Lower Upper  
 105 100  
 120 48.4 20.9 62.7

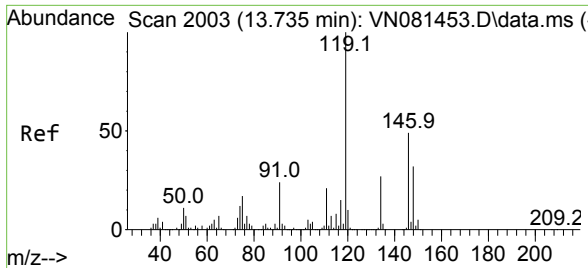


#86  
 p-Isopropyltoluene  
 Concen: 3.274 ug/l  
 RT: 13.729 min Scan# 2002  
 Delta R.T. 0.000 min  
 Lab File: VN081730.D  
 Acq: 12 Apr 2024 20:07



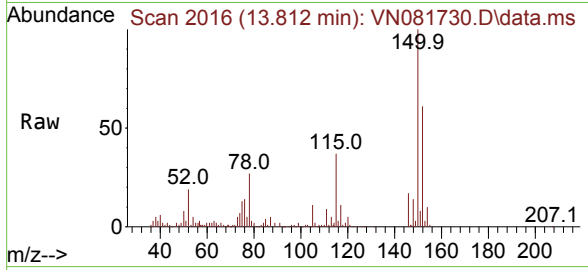
Tgt Ion:119 Resp: 65525  
 Ion Ratio Lower Upper  
 119 100  
 134 26.9 12.4 37.2  
 91 28.7 13.5 40.4





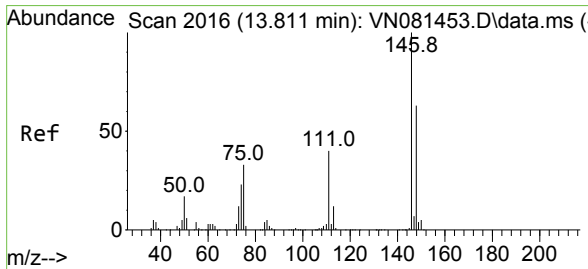
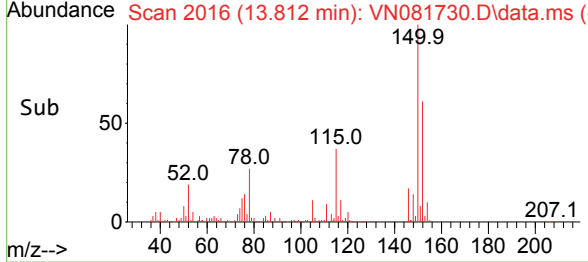
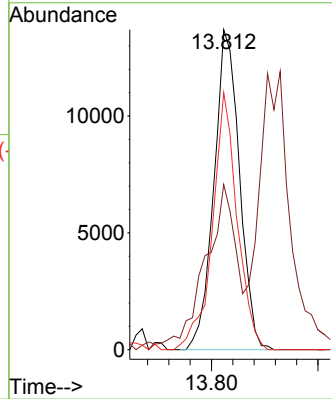
#87  
 1,3-Dichlorobenzene  
 Concen: 2.086 ug/l  
 RT: 13.812 min Scan# 2016  
 Delta R.T. 0.077 min  
 Lab File: VN081730.D  
 Acq: 12 Apr 2024 20:07

Instrument : MSVOA\_N  
 ClientSampleId :



Tgt Ion:146 Resp: 22766

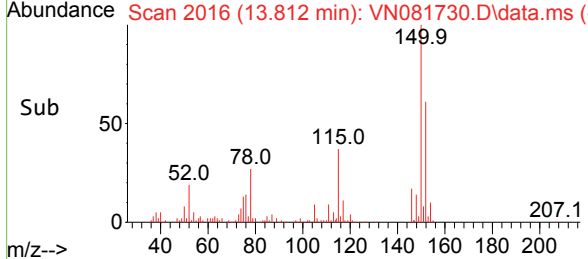
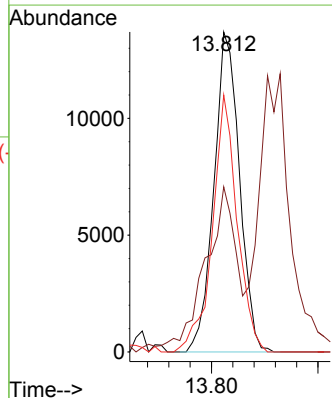
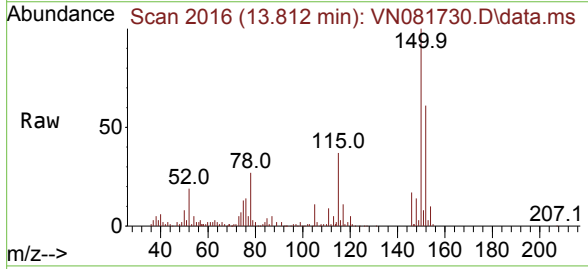
Ion	Ratio	Lower	Upper
146	100		
111	63.7	23.9	71.7
148	78.0	32.6	97.7

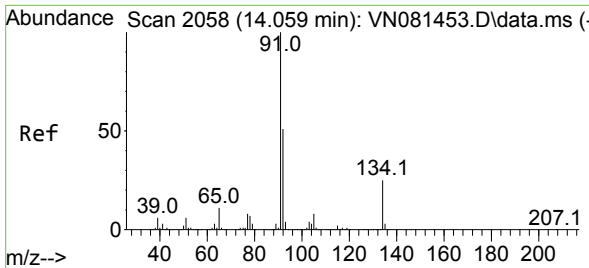


#88  
 1,4-Dichlorobenzene  
 Concen: 2.015 ug/l  
 RT: 13.812 min Scan# 2016  
 Delta R.T. 0.000 min  
 Lab File: VN081730.D  
 Acq: 12 Apr 2024 20:07

Tgt Ion:146 Resp: 22766

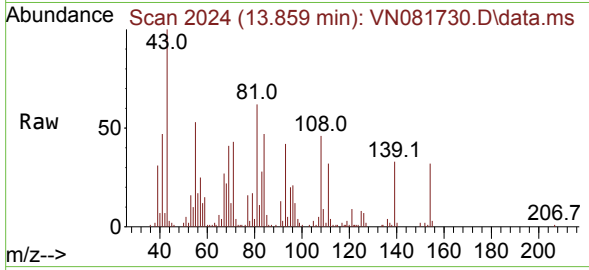
Ion	Ratio	Lower	Upper
146	100		
111	63.7	22.6	67.7
148	78.0	31.9	95.5





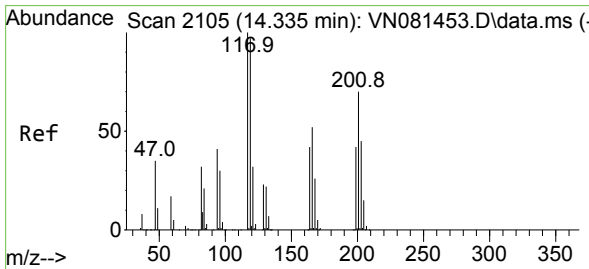
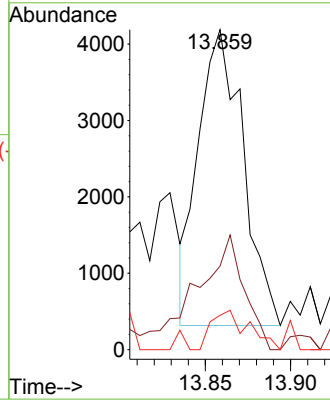
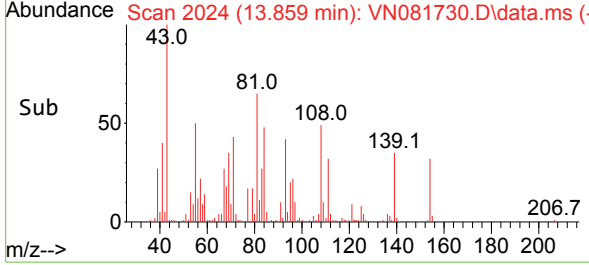
#89  
 n-Butylbenzene  
 Concen: 0.397 ug/l  
 RT: 13.859 min Scan# 2058  
 Delta R.T. -0.200 min  
 Lab File: VN081730.D  
 Acq: 12 Apr 2024 20:07

Instrument : MSVOA\_N  
 ClientSampleId :



Tgt Ion: 91 Resp: 7053

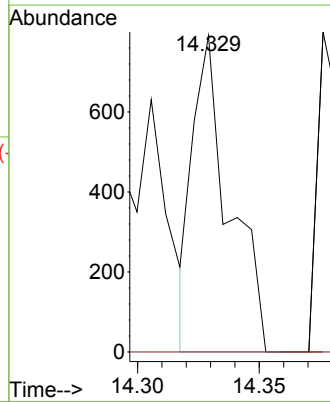
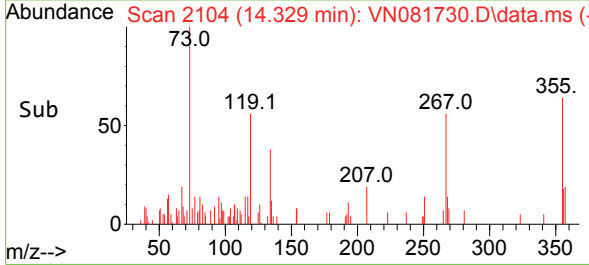
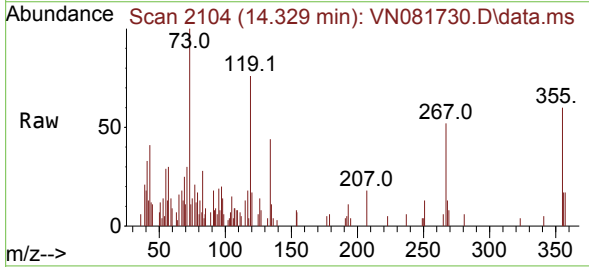
Ion	Ratio	Lower	Upper
91	100		
92	45.1	26.7	80.1
134	11.1	10.8	32.4

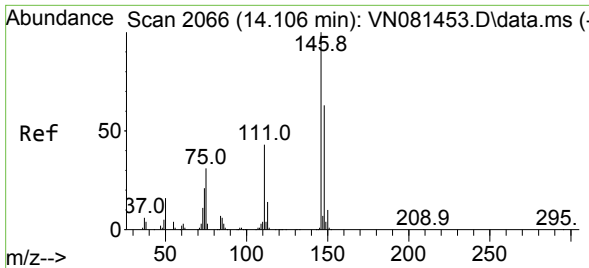


#90  
 Hexachloroethane  
 Concen: 0.217 ug/l  
 RT: 14.329 min Scan# 2104  
 Delta R.T. -0.006 min  
 Lab File: VN081730.D  
 Acq: 12 Apr 2024 20:07

Tgt Ion: 117 Resp: 823

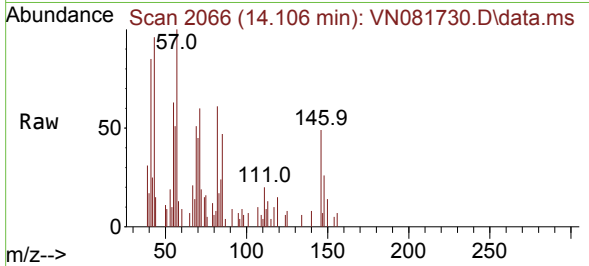
Ion	Ratio	Lower	Upper
117	100		
201	0.0	30.0	90.0



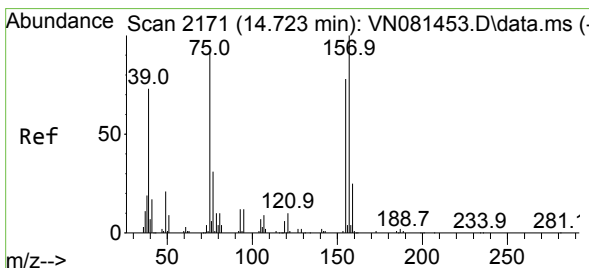
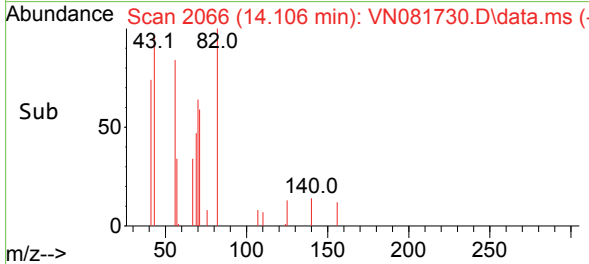
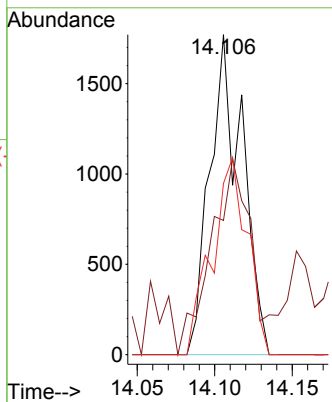


#91  
 1,2-Dichlorobenzene  
 Concen: 0.246 ug/l  
 RT: 14.106 min Scan# 2066  
 Delta R.T. 0.000 min  
 Lab File: VN081730.D  
 Acq: 12 Apr 2024 20:07

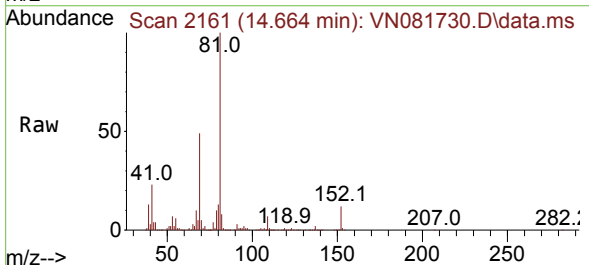
Instrument : MSVOA\_N  
 ClientSampleId :



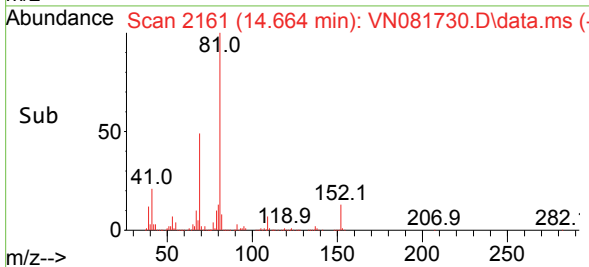
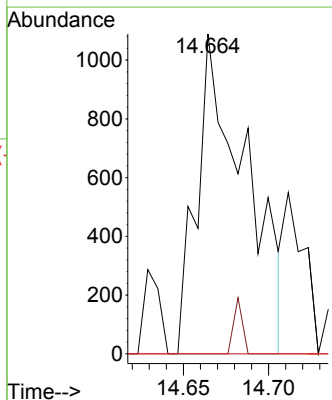
Tgt Ion:146 Resp: 2579  
 Ion Ratio Lower Upper  
 146 100  
 111 78.0 23.9 71.8#  
 148 67.2 31.4 94.0



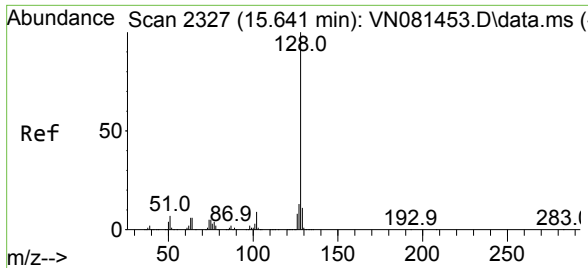
#92  
 1,2-Dibromo-3-Chloropropane  
 Concen: 1.436 ug/l  
 RT: 14.664 min Scan# 2161  
 Delta R.T. -0.059 min  
 Lab File: VN081730.D  
 Acq: 12 Apr 2024 20:07



Tgt Ion: 75 Resp: 2161  
 Ion Ratio Lower Upper  
 75 100  
 155 3.1 31.8 95.4#  
 157 0.0 41.1 123.4#

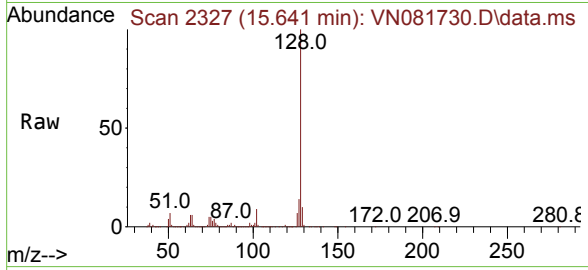






#95  
 Naphthalene  
 Concen: 25.754 ug/l  
 RT: 15.641 min Scan# 21  
 Delta R.T. 0.000 min  
 Lab File: VN081730.D  
 Acq: 12 Apr 2024 20:07

Instrument :  
 MSVOA\_N  
 ClientSampleId :



Tgt Ion:128 Resp: 506789

Ion	Ratio	Lower	Upper
128	100		
127	13.0	10.0	15.0
129	10.6	8.7	13.1

