

Data Path : Z:\voasrv\HPCHEM1\MSVOA_N\Data\VN041425\
 Data File : VN086260.D
 Acq On : 14 Apr 2025 11:27
 Operator : JC\MD
 Sample : VN0414WBL01
 Misc : 5.0mL/MSVOA_N/WATER
 ALS Vial : 5 Sample Multiplier: 1

Instrument :
 MSVOA_N
ClientSampleId :
 VN0414WBL01

Quant Time: Apr 15 03:06:51 2025
 Quant Method : Z:\voasrv\HPCHEM1\MSVOA_N\methods\624N041125W.M
 Quant Title : METHOD 624 VOLATILE ORGANIC ANALYSIS
 QLast Update : Sat Apr 12 01:21:52 2025
 Response via : Initial Calibration

Compound	R.T.	QIon	Response	Conc	Units	Dev(Min)

Internal Standards						
1) Bromochloromethane	7.812	128	34059	30.000	ug/l	0.00
28) 1,4-Difluorobenzene	9.100	114	208636	30.000	ug/l	0.00
57) Chlorobenzene-d5	11.865	117	183354	30.000	ug/l	0.00
System Monitoring Compounds						
27) 1,2-Dichloroethane-d4	8.577	65	100164	30.152	ug/l	0.00
Spiked Amount	30.000	Range 91 - 110	Recovery	=	100.500%	
60) 4-Bromofluorobenzene	12.847	95	100864	27.630	ug/l	0.00
Spiked Amount	30.000	Range 63 - 112	Recovery	=	92.100%	
63) Toluene-d8	10.565	98	308243	29.778	ug/l	0.00
Spiked Amount	30.000	Range 91 - 112	Recovery	=	99.267%	

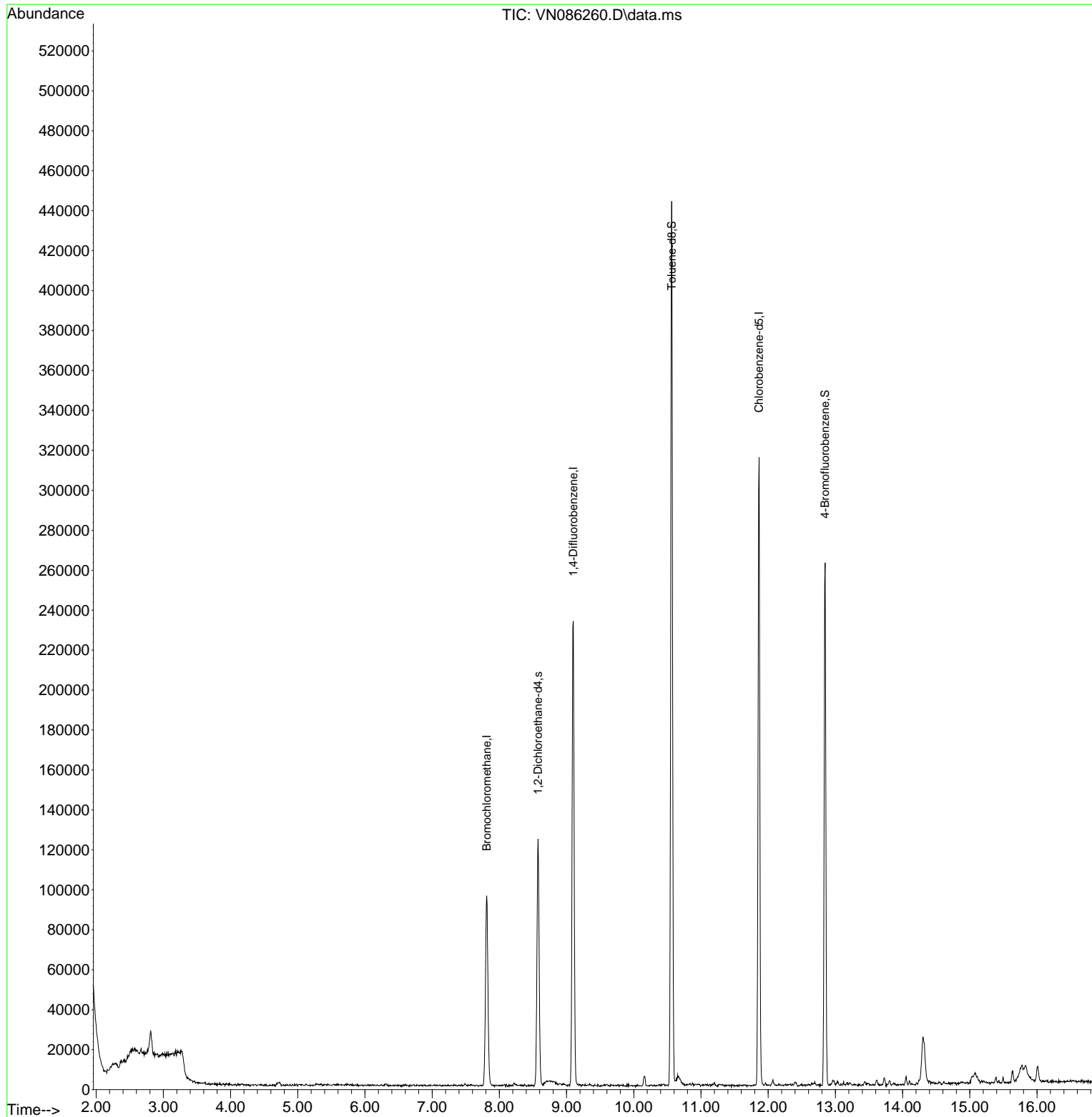
Target Compounds Qvalue

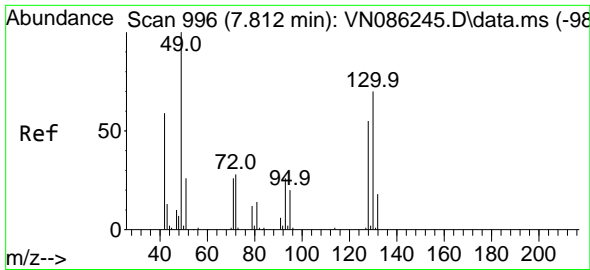
(#) = qualifier out of range (m) = manual integration (+) = signals summed

Data Path : Z:\voasrv\HPCHEM1\MSVOA_N\Data\VN041425\
Data File : VN086260.D
Acq On : 14 Apr 2025 11:27
Operator : JC\MD
Sample : VN0414WBL01
Misc : 5.0mL/MSVOA_N/WATER
ALS Vial : 5 Sample Multiplier: 1

Instrument :
MSVOA_N
ClientSampleId :
VN0414WBL01

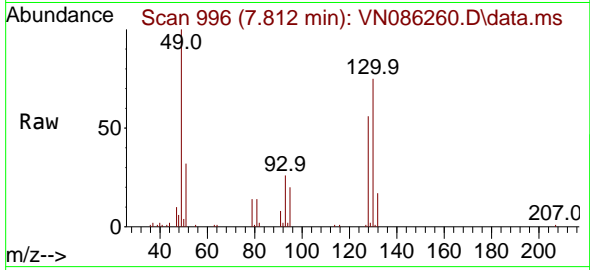
Quant Time: Apr 15 03:06:51 2025
Quant Method : Z:\voasrv\HPCHEM1\MSVOA_N\methods\624N041125W.M
Quant Title : METHOD 624 VOLATILE ORGANIC ANALYSIS
QLast Update : Sat Apr 12 01:21:52 2025
Response via : Initial Calibration



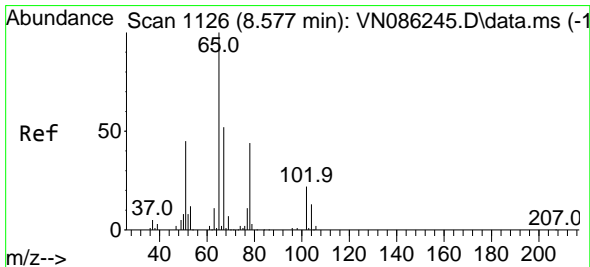
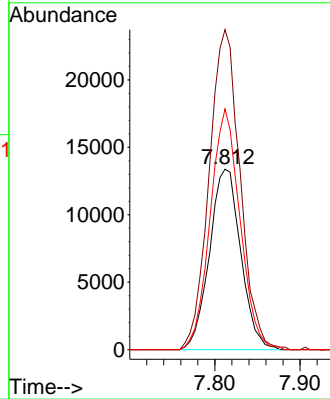
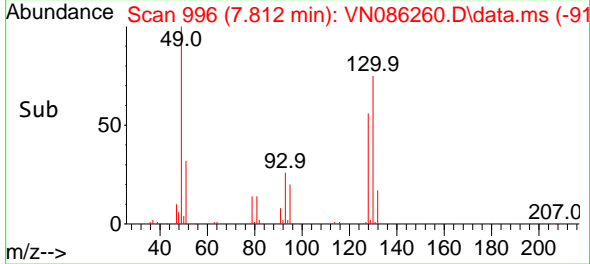


#1
 Bromochloromethane
 Concen: 30.000 ug/l
 RT: 7.812 min Scan# 996
 Delta R.T. -0.000 min
 Lab File: VN086260.D
 Acq: 14 Apr 2025 11:27

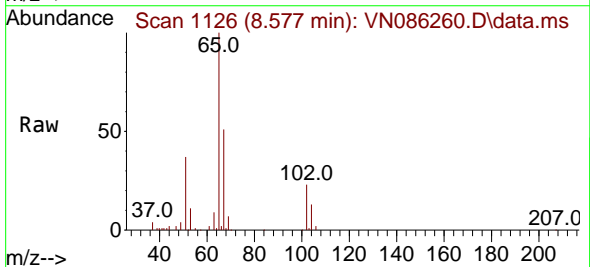
Instrument :
 MSVOA_N
 ClientSampleId :
 VN0414WBL01



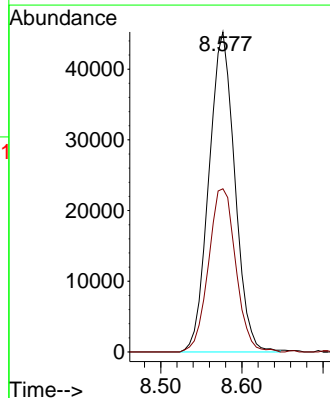
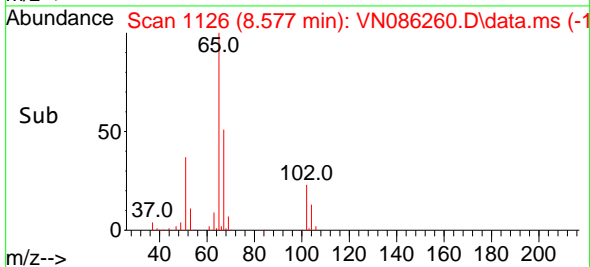
Tgt Ion	Resp	Lower	Upper
128	100		
49	175.4	0.0	452.5
130	127.5	0.0	315.0

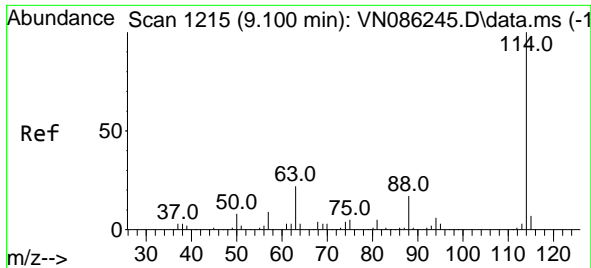


#27
 1,2-Dichloroethane-d4
 Concen: 30.152 ug/l
 RT: 8.577 min Scan# 1126
 Delta R.T. -0.000 min
 Lab File: VN086260.D
 Acq: 14 Apr 2025 11:27



Tgt Ion	Resp	Lower	Upper
65	100		
67	53.7	43.4	65.2

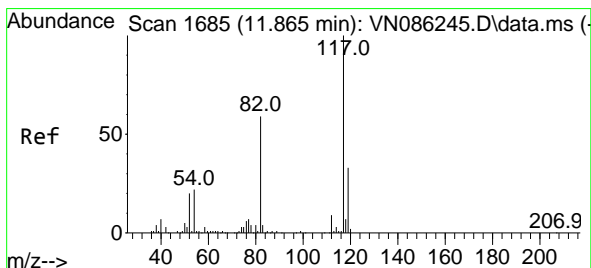
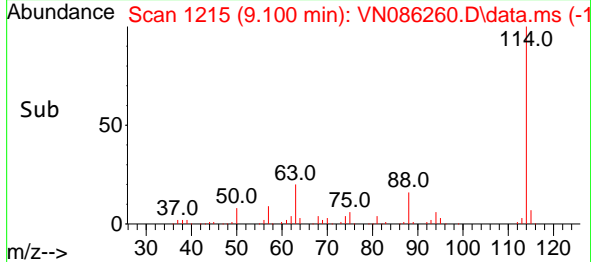
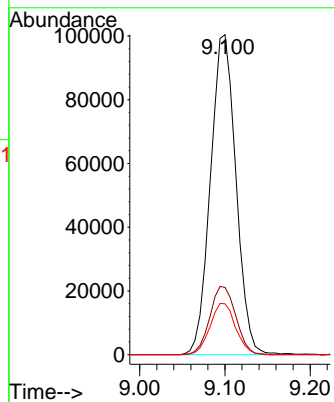
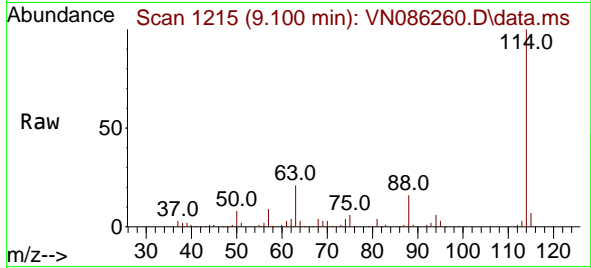




#28
 1,4-Difluorobenzene
 Concen: 30.000 ug/l
 RT: 9.100 min Scan# 11
 Delta R.T. -0.000 min
 Lab File: VN086260.D
 Acq: 14 Apr 2025 11:27

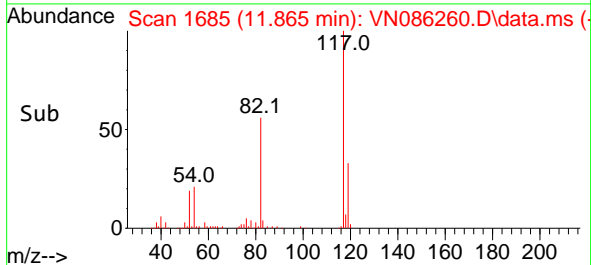
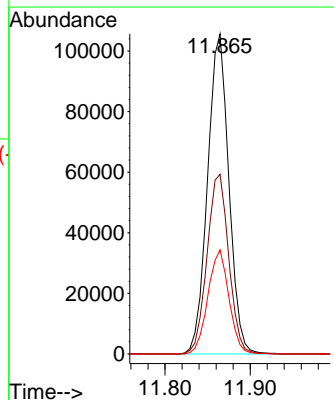
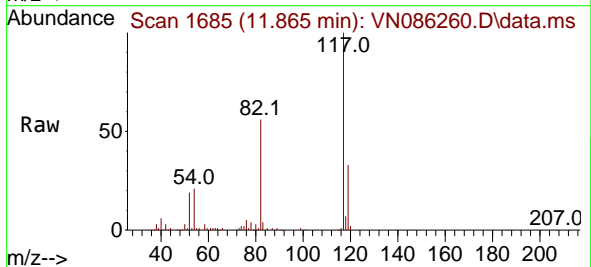
Instrument :
 MSVOA_N
 ClientSampleId :
 VN0414WBL01

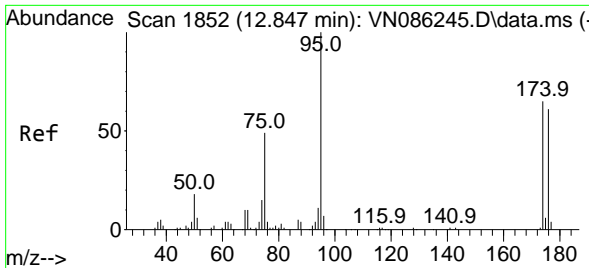
Tgt Ion	Resp	Lower	Upper
114	208636		
63	21.7	17.8	26.6
88	16.1	13.4	20.2



#57
 Chlorobenzene-d5
 Concen: 30.000 ug/l
 RT: 11.865 min Scan# 1685
 Delta R.T. -0.000 min
 Lab File: VN086260.D
 Acq: 14 Apr 2025 11:27

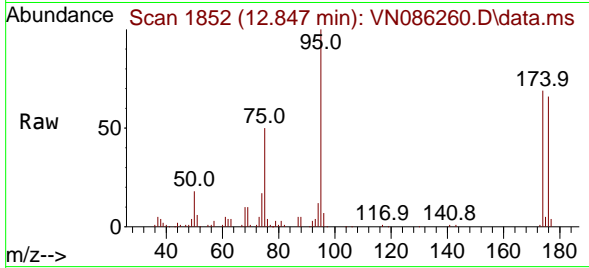
Tgt Ion	Resp	Lower	Upper
117	183354		
82	57.3	47.3	70.9
119	32.1	25.9	38.9



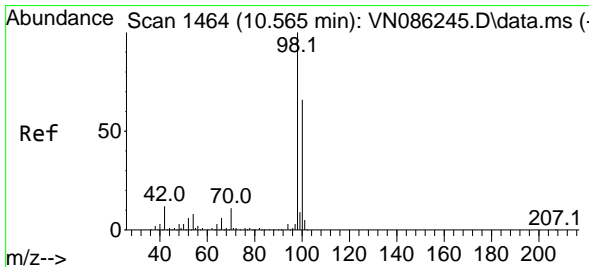
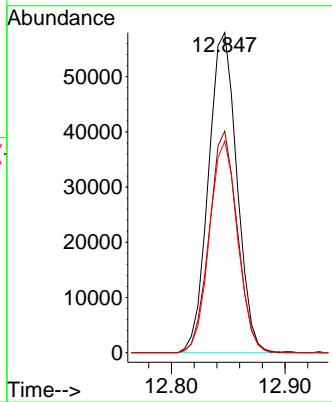
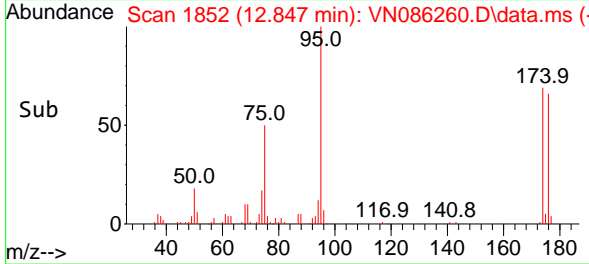


#60
 4-Bromofluorobenzene
 Concen: 27.630 ug/l
 RT: 12.847 min Scan# 11
 Delta R.T. -0.000 min
 Lab File: VN086260.D
 Acq: 14 Apr 2025 11:27

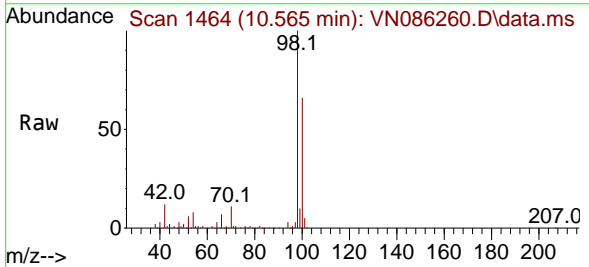
Instrument :
 MSVOA_N
 ClientSampleId :
 VN0414WBL01



Tgt Ion: 95 Resp: 100864
 Ion Ratio Lower Upper
 95 100
 174 68.4 52.7 79.1
 176 65.5 49.8 74.8



#63
 Toluene-d8
 Concen: 29.778 ug/l
 RT: 10.565 min Scan# 1464
 Delta R.T. -0.000 min
 Lab File: VN086260.D
 Acq: 14 Apr 2025 11:27



Tgt Ion: 98 Resp: 308243
 Ion Ratio Lower Upper
 98 100
 100 65.6 52.3 78.5

