

Data Path : Z:\VOASRV\HPCHEM1\MSVOA N\DATA\VN041520\
 Data File : VN060963.D
 Acq On : 15 Apr 2020 15:52
 Operator : JC/MD
 Sample : L2245-13
 Misc : 5.00mL/MSVOA N/WATER
 ALS Vial : 15 Sample Multiplier: 1

Instrument :
 MSVOA_N
 ClientSampleId :

Quant Time: Apr 16 06:35:00 2020
 Quant Method : Z:\VOASRV\HPCHEM1\MSVOA_N\METHODS\82N031820W.M
 Quant Title : SW846 8260
 QLast Update : Wed Mar 18 08:49:09 2020
 Response via : Initial Calibration

| Internal Standards | R.T. | QIon | Response | Conc | Units | Dev(Min) |
|----------------------------|-------|------|----------|-------|-------|----------|
| 1) Pentafluorobenzene | 7.64 | 168 | 134857 | 50.00 | ug/l | 0.00 |
| 34) 1,4-Difluorobenzene | 8.56 | 114 | 227920 | 50.00 | ug/l | 0.00 |
| 63) Chlorobenzene-d5 | 11.40 | 117 | 218243 | 50.00 | ug/l | 0.00 |
| 72) 1,4-Dichlorobenzene-d4 | 13.34 | 152 | 97479 | 50.00 | ug/l | 0.00 |

System Monitoring Compounds

| | | | | | | |
|---------------------------|--------|-----|----------|-------|---------|------|
| 33) 1,2-Dichloroethane-d4 | 8.00 | 65 | 90890 | 49.10 | ug/l | 0.00 |
| Spiked Amount | 50.000 | | Recovery | = | 98.20% | |
| 35) Dibromofluoromethane | 7.56 | 113 | 68278 | 49.54 | ug/l | 0.00 |
| Spiked Amount | 50.000 | | Recovery | = | 99.08% | |
| 50) Toluene-d8 | 10.08 | 98 | 288195 | 51.20 | ug/l | 0.00 |
| Spiked Amount | 50.000 | | Recovery | = | 102.40% | |
| 62) 4-Bromofluorobenzene | 12.39 | 95 | 108045 | 52.37 | ug/l | 0.00 |
| Spiked Amount | 50.000 | | Recovery | = | 104.74% | |

Target Compounds

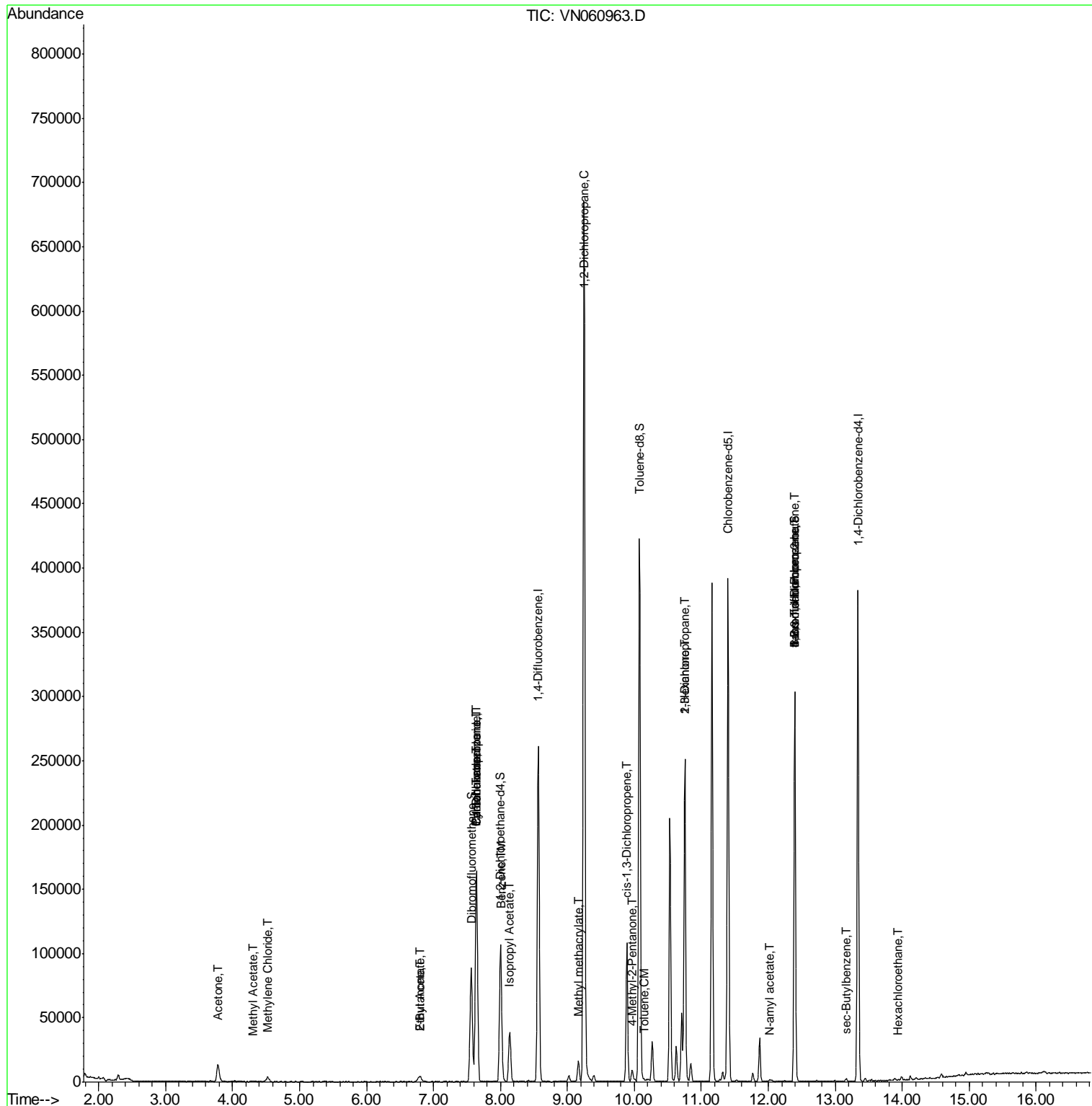
| | | | | | | Qvalue |
|--------------------------------|-------|-----|-------|--------|--------|--------|
| 16) Acetone | 3.78 | 43 | 24083 | 36.725 | ug/l | 97 |
| 18) Methyl Acetate | 4.29 | 43 | 1491 | 0.808 | ug/l # | 54 |
| 20) Methylene Chloride | 4.52 | 84 | 2819 | 1.748 | ug/l | 87 |
| 25) 2-Butanone | 6.81 | 43 | 7139 | 6.728 | ug/l | 96 |
| 31) Cyclohexane | 7.64 | 56 | 2841 | 0.953 | ug/l # | 1 |
| 36) 1,1-Dichloropropene | 7.64 | 75 | 10682 | 4.840 | ug/l # | 50 |
| 37) Ethyl Acetate | 6.81 | 43 | 7139 | 2.994 | ug/l # | 70 |
| 38) Carbon Tetrachloride | 7.64 | 117 | 13240 | 6.694 | ug/l # | 16 |
| 40) Benzene | 8.02 | 78 | 3457 | 0.519 | ug/l | 98 |
| 43) Isopropyl Acetate | 8.14 | 43 | 47992 | 12.203 | ug/l # | 90 |
| 45) 1,2-Dichloropropane | 9.25 | 63 | 738 | 0.420 | ug/l # | 43 |
| 48) Methyl methacrylate | 9.16 | 41 | 2385 | 1.362 | ug/l # | 15 |
| 51) 4-Methyl-2-Pentanone | 9.97 | 43 | 6151 | 2.749 | ug/l | 99 |
| 52) Toluene | 10.14 | 92 | 1104 | 0.274 | ug/l | 88 |
| 54) cis-1,3-Dichloropropene | 9.89 | 75 | 18542 | 6.662 | ug/l # | 62 |
| 57) 1,3-Dichloropropane | 10.75 | 76 | 2280 | 0.849 | ug/l # | 42 |
| 59) 2-Hexanone | 10.75 | 43 | 37322 | 23.151 | ug/l # | 52 |
| 71) Bromoform | 12.39 | 173 | 250 | 1.866 | ug/l # | 1 |
| 74) N-amyl acetate | 12.02 | 43 | 2229 | 0.659 | ug/l # | 45 |
| 76) 1,2,3-Trichloropropane | 12.39 | 75 | 54846 | 26.075 | ug/l # | 100 |
| 81) trans-1,4-Dichloro-2-buten | 12.39 | 75 | 54846 | 66.968 | ug/l # | 13 |
| 85) sec-Butylbenzene | 13.17 | 105 | 1719 | 0.248 | ug/l | 99 |
| 90) Hexachloroethane | 13.94 | 117 | 310 | 0.343 | ug/l # | 8 |

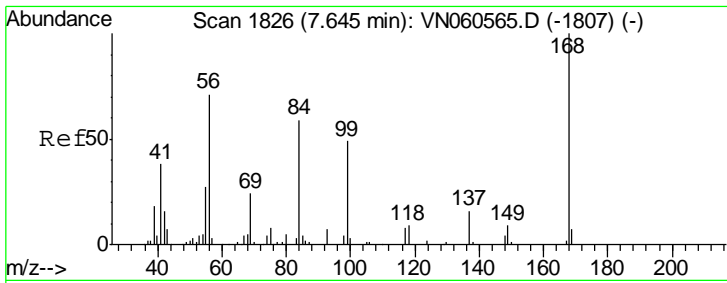
(#) = qualifier out of range (m) = manual integration (+) = signals summed

Data Path : Z:\VOASRV\HPCHEM1\MSVOA N\DATA\VN041520\
 Data File : VN060963.D
 Acq On : 15 Apr 2020 15:52
 Operator : JC/MD
 Sample : L2245-13
 Misc : 5.00mL/MSVOA N/WATER
 ALS Vial : 15 Sample Multiplier: 1

Instrument :
 MSVOA_N
 Client Sampled :

Quant Time: Apr 16 06:35:00 2020
 Quant Method : Z:\VOASRV\HPCHEM1\MSVOA_N\METHODS\82N031820W.M
 Quant Title : SW846 8260
 QLast Update : Wed Mar 18 08:49:09 2020
 Response via : Initial Calibration

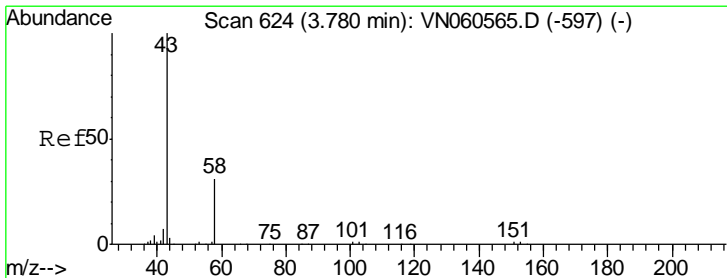
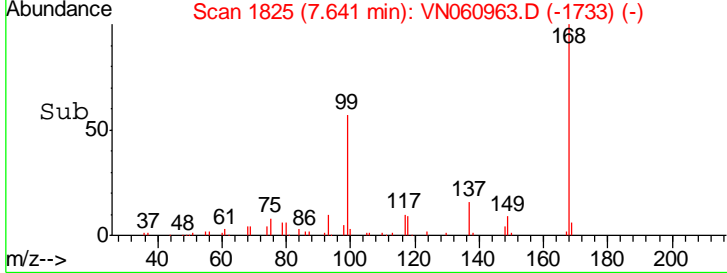
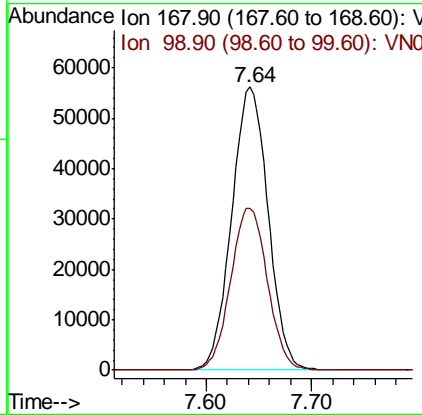
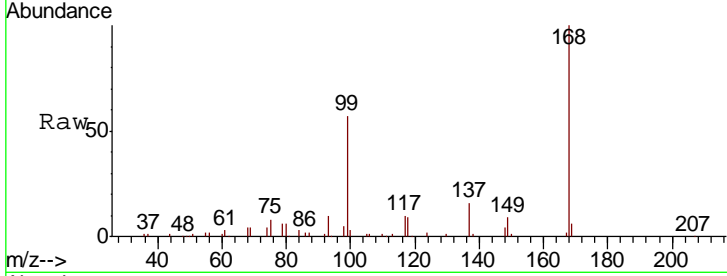




#1
 Pentafluorobenzene
 Concen: 50.000 ug/l
 RT: 7.64 min Scan# 1825
 Delta R.T. -0.00 min
 Lab File: VN060963.D
 Acq: 15 Apr 2020 15:52

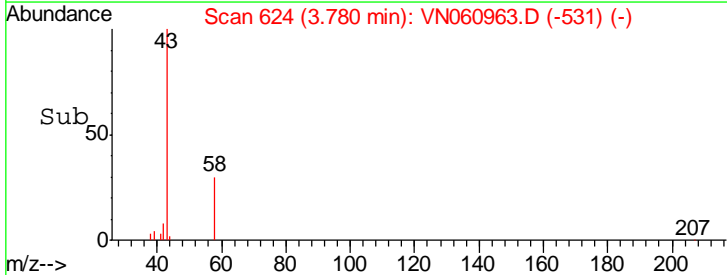
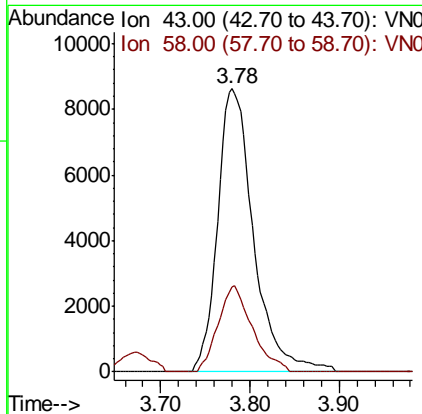
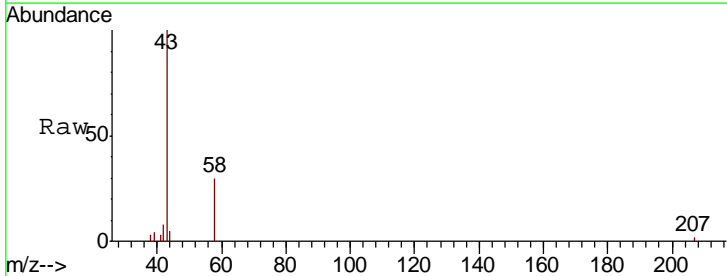
Instrument :
 MSVOA_N
 ClientSampled :

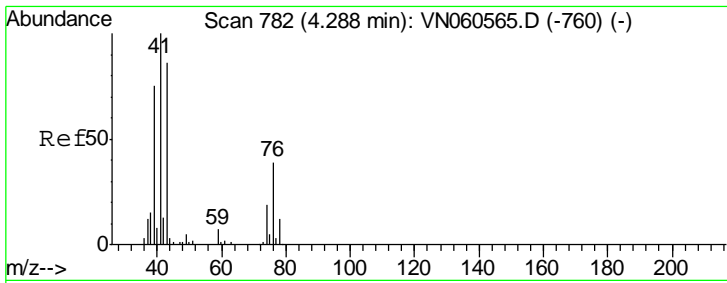
| Tgt Ion | Resp | Lower | Upper |
|---------|------|-------|-------|
| 168 | 100 | | |
| 99 | 57.2 | 44.0 | 66.0 |



#16
 Acetone
 Concen: 36.725 ug/l
 RT: 3.78 min Scan# 624
 Delta R.T. -0.00 min
 Lab File: VN060963.D
 Acq: 15 Apr 2020 15:52

| Tgt Ion | Resp | Lower | Upper |
|---------|------|-------|-------|
| 43 | 100 | | |
| 58 | 30.0 | 25.1 | 37.7 |

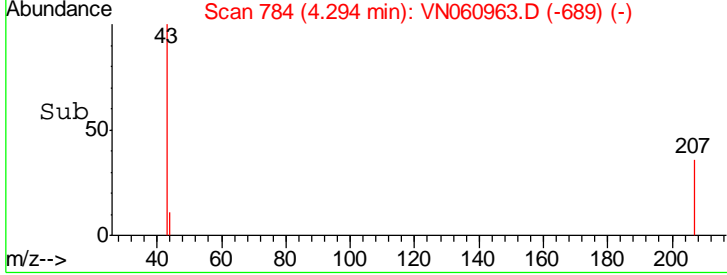
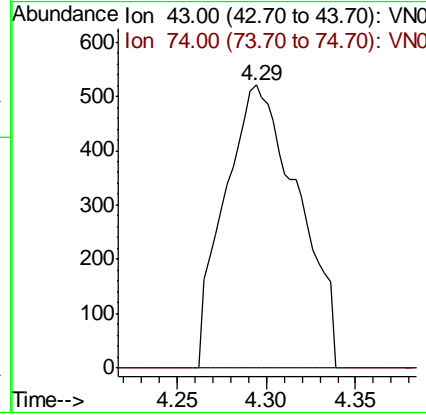
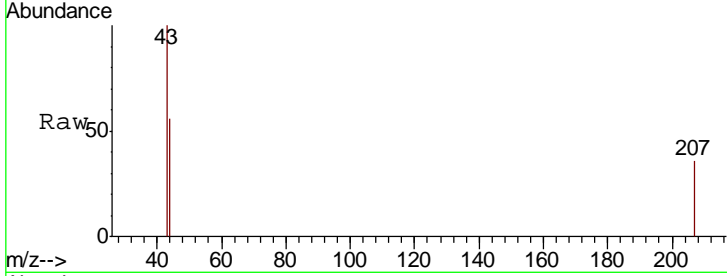




#18
 Methyl Acetate
 Concen: 0.808 ug/l
 RT: 4.29 min Scan# 784
 Delta R.T. 0.01 min
 Lab File: VN060963.D
 Acq: 15 Apr 2020 15:52

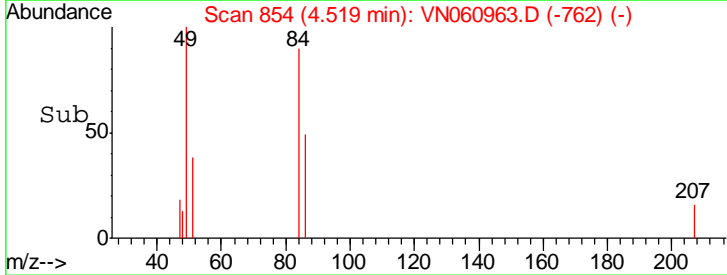
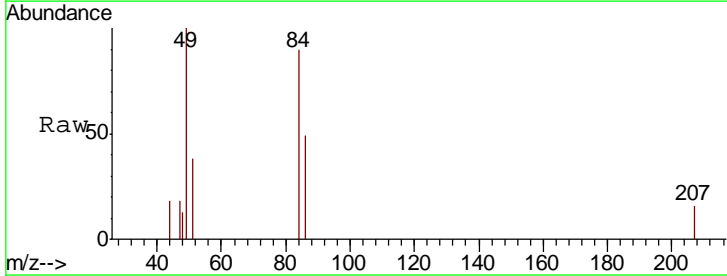
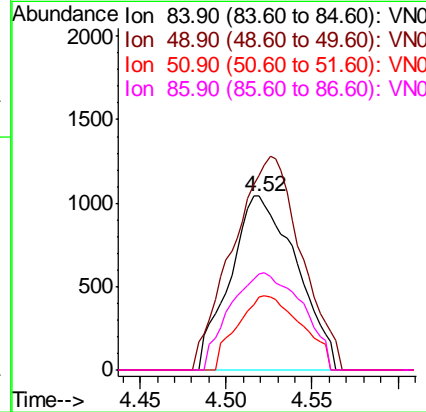
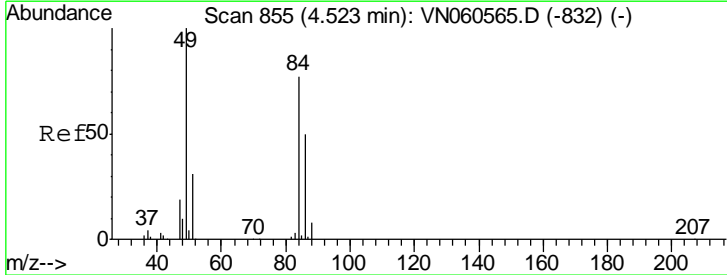
Instrument :
 MSVOA_N
 ClientSampled :

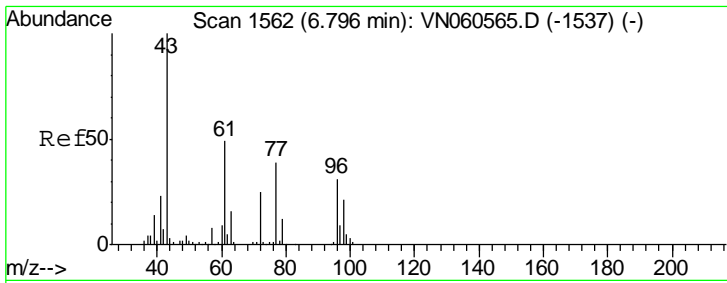
| Tgt Ion | Resp | Lower | Upper |
|---------|------|-------|-------|
| 43 | 100 | | |
| 74 | 0.0 | 17.5 | 26.3# |



#20
 Methylene Chloride
 Concen: 1.748 ug/l
 RT: 4.52 min Scan# 854
 Delta R.T. -0.00 min
 Lab File: VN060963.D
 Acq: 15 Apr 2020 15:52

| Tgt Ion | Resp | Lower | Upper |
|---------|-------|-------|-------|
| 84 | 100 | | |
| 49 | 111.6 | 103.3 | 154.9 |
| 51 | 42.0 | 31.6 | 47.4 |
| 86 | 55.1 | 52.0 | 78.0 |

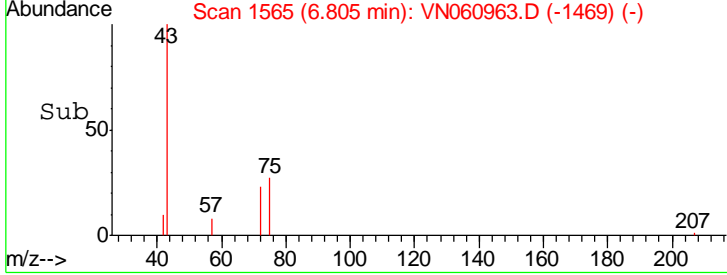
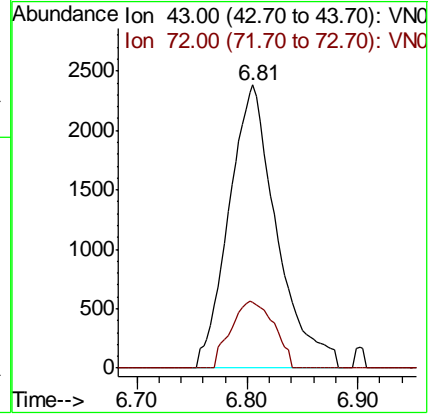
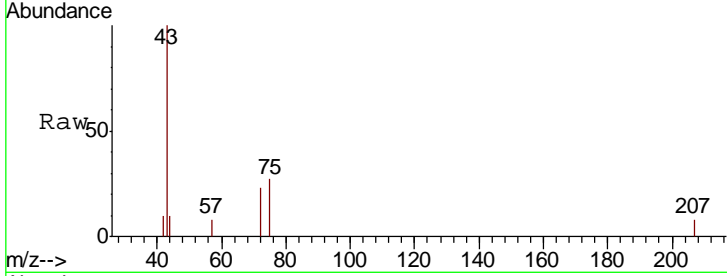




#25
 2-Butanone
 Concen: 6.728 ug/l
 RT: 6.81 min Scan# 1565
 Delta R.T. 0.01 min
 Lab File: VN060963.D
 Acq: 15 Apr 2020 15:52

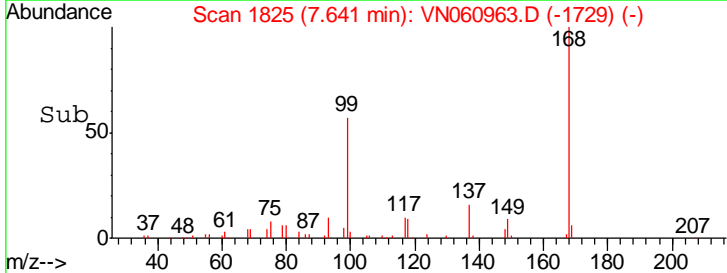
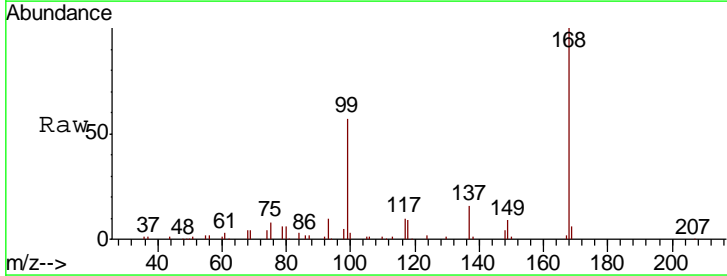
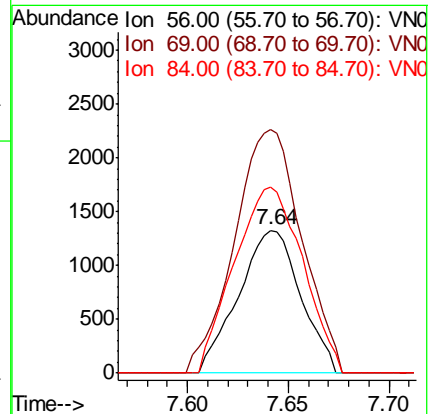
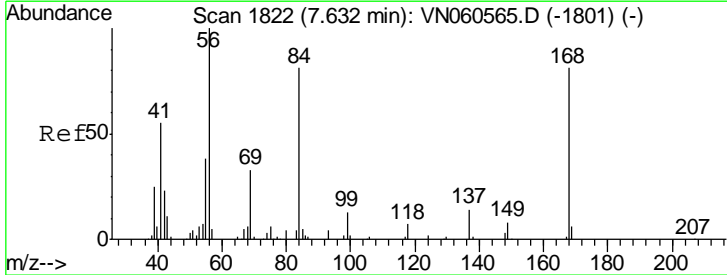
Instrument :
 MSVOA_N
 ClientSampled :

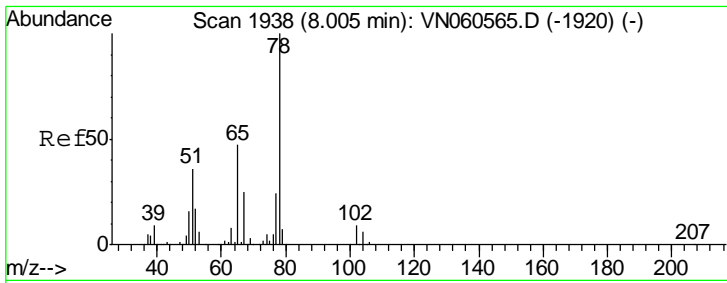
| Tgt Ion | Resp | Lower | Upper |
|---------|------|-------|-------|
| 43 | 7139 | | |
| 72 | 23.3 | 20.4 | 30.6 |



#31
 Cyclohexane
 Concen: 0.953 ug/l
 RT: 7.64 min Scan# 1825
 Delta R.T. 0.01 min
 Lab File: VN060963.D
 Acq: 15 Apr 2020 15:52

| Tgt Ion | Resp | Lower | Upper |
|---------|-------|-------|-------|
| 56 | 2841 | | |
| 69 | 170.7 | 26.6 | 40.0# |
| 84 | 130.6 | 64.3 | 96.5# |

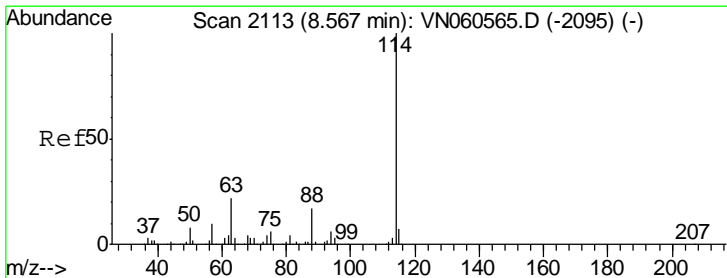
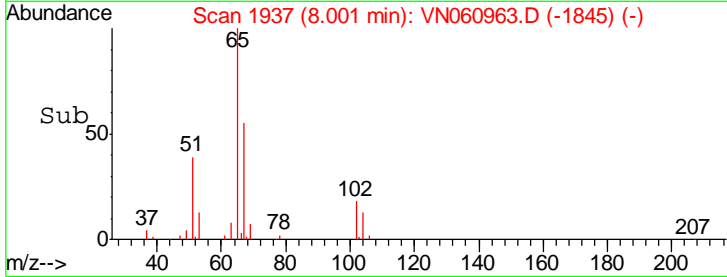
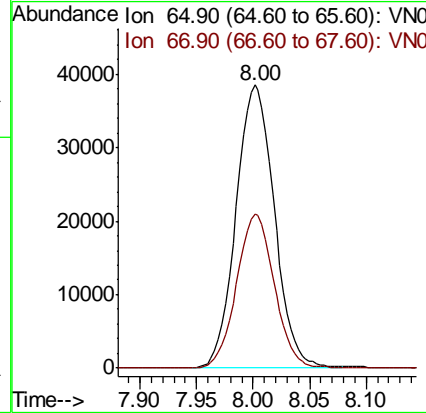
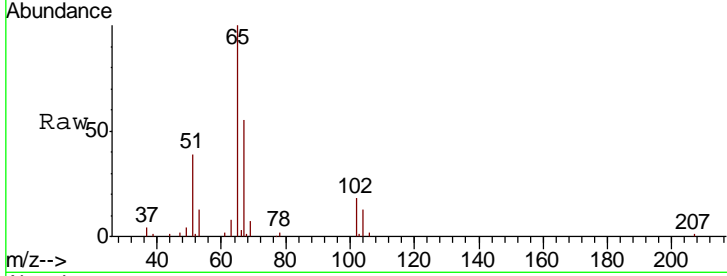




#33
 1,2-Dichloroethane-d4
 Concen: 49.096 ug/l
 RT: 8.00 min Scan# 1937
 Delta R.T. -0.00 min
 Lab File: VN060963.D
 Acq: 15 Apr 2020 15:52

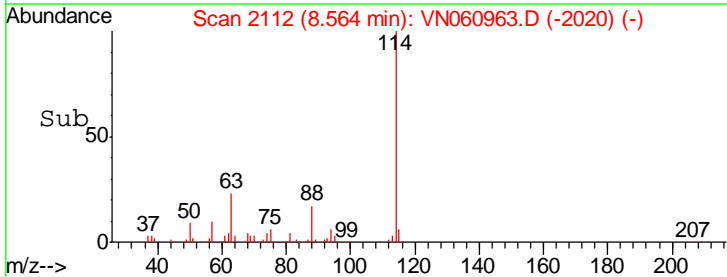
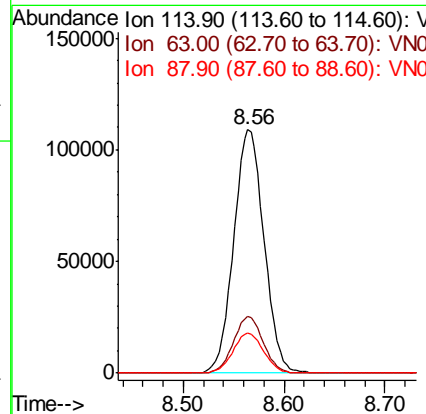
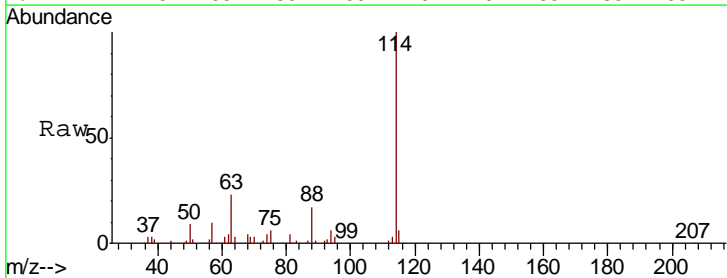
Instrument :
 MSVOA_N
 ClientSampled :

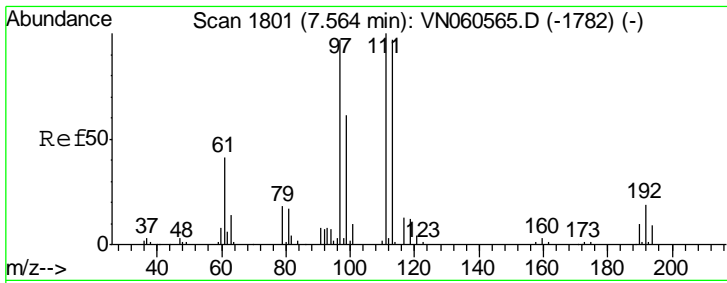
| Tgt Ion | Resp | Lower | Upper |
|---------|------|-------|-------|
| 65 | 100 | | |
| 67 | 53.6 | 0.0 | 107.6 |



#34
 1,4-Difluorobenzene
 Concen: 50.000 ug/l
 RT: 8.56 min Scan# 2112
 Delta R.T. -0.00 min
 Lab File: VN060963.D
 Acq: 15 Apr 2020 15:52

| Tgt Ion | Resp | Lower | Upper |
|---------|------|-------|-------|
| 114 | 100 | | |
| 63 | 23.1 | 0.0 | 43.8 |
| 88 | 16.6 | 0.0 | 33.0 |

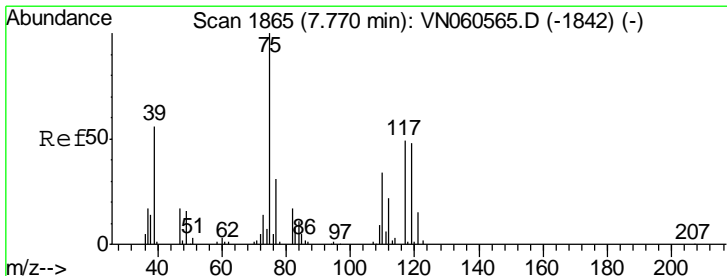
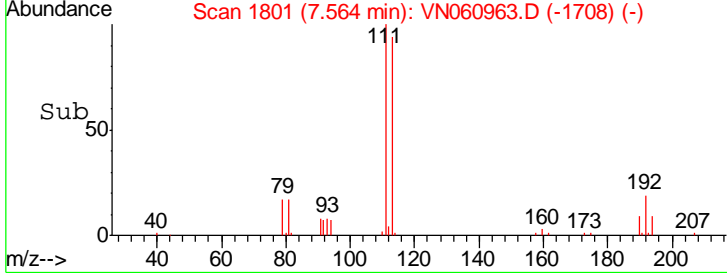
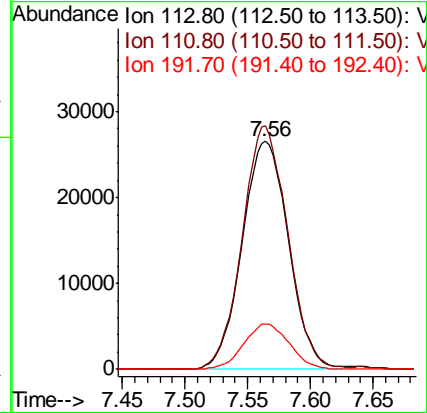
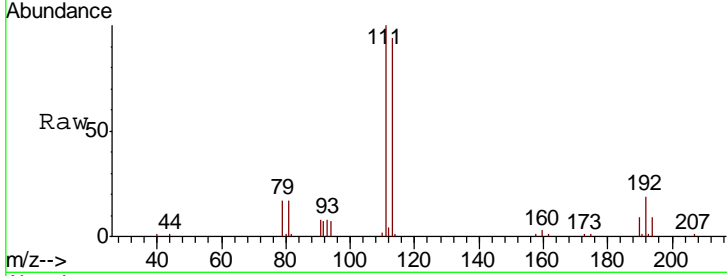




#35
 Dibromofluoromethane
 Concen: 49.543 ug/l
 RT: 7.56 min Scan# 1801
 Delta R.T. -0.00 min
 Lab File: VN060963.D
 Acq: 15 Apr 2020 15:52

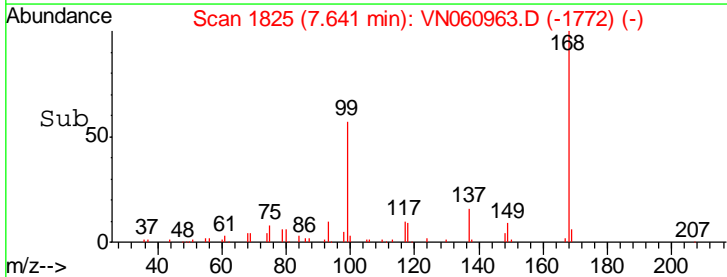
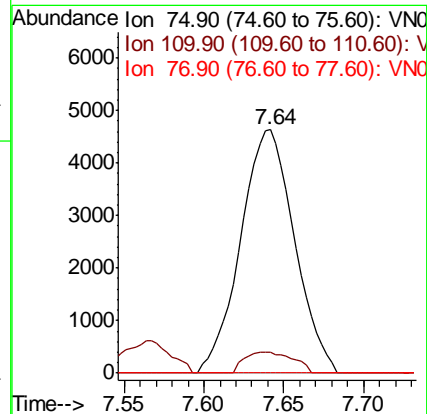
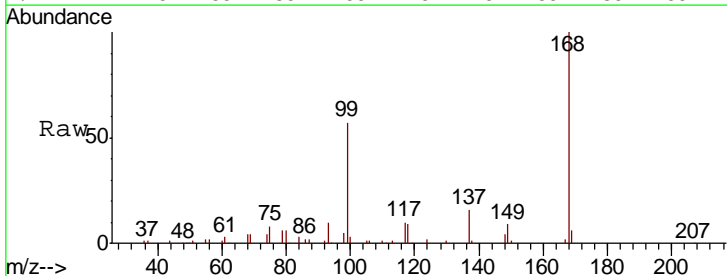
Instrument :
 MSVOA_N
 ClientSampled :

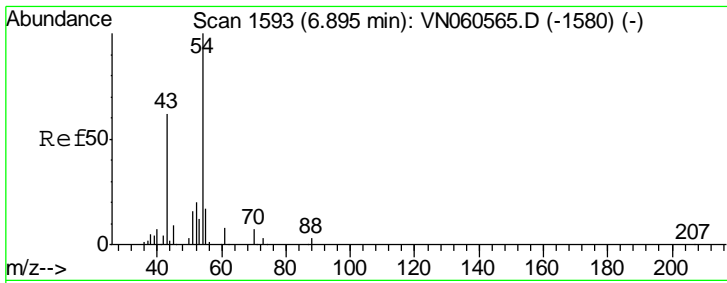
| Tgt Ion | Resp | Lower | Upper |
|---------|-------|-------|-------|
| 113 | 100 | | |
| 111 | 104.5 | 82.9 | 124.3 |
| 192 | 19.6 | 15.8 | 23.8 |



#36
 1,1-Dichloropropene
 Concen: 4.840 ug/l
 RT: 7.64 min Scan# 1825
 Delta R.T. -0.13 min
 Lab File: VN060963.D
 Acq: 15 Apr 2020 15:52

| Tgt Ion | Resp | Lower | Upper |
|---------|------|-------|-------|
| 75 | 100 | | |
| 110 | 7.8 | 16.9 | 50.6# |
| 77 | 0.0 | 24.6 | 36.8# |

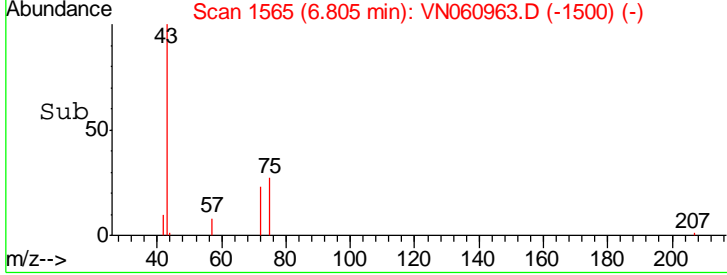
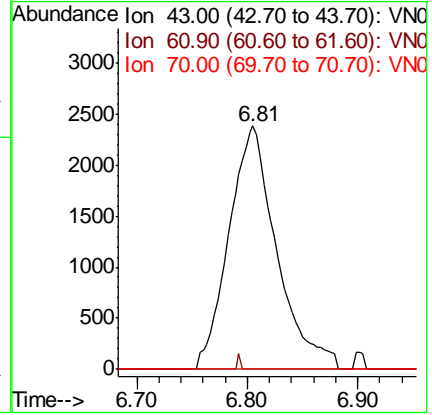
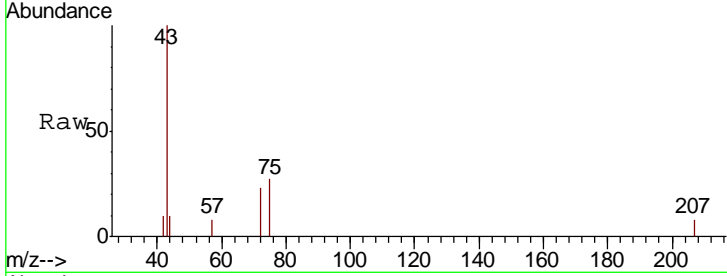




#37
 Ethyl Acetate
 Concen: 2.994 ug/l
 RT: 6.81 min Scan# 1565
 Delta R.T. -0.09 min
 Lab File: VN060963.D
 Acq: 15 Apr 2020 15:52

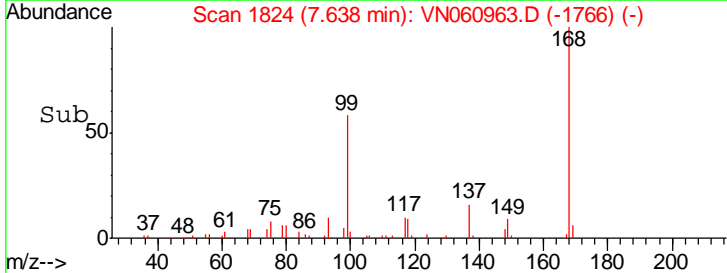
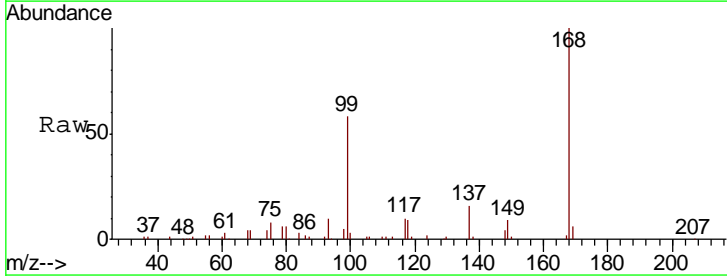
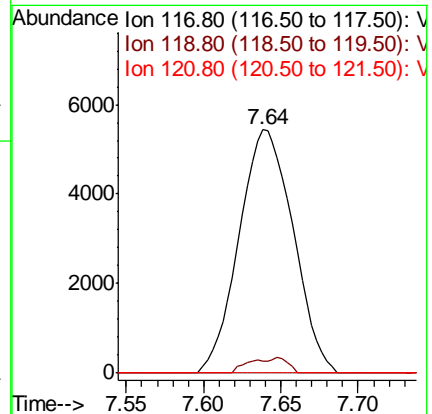
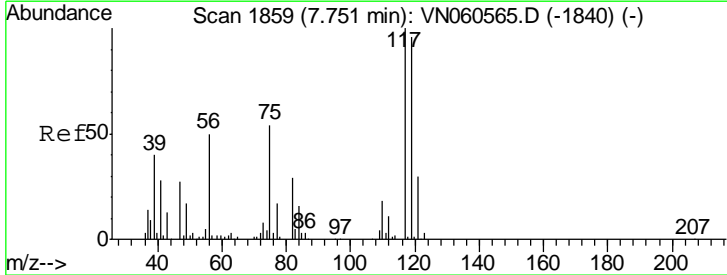
Instrument :
 MSVOA_N
 ClientSampled :

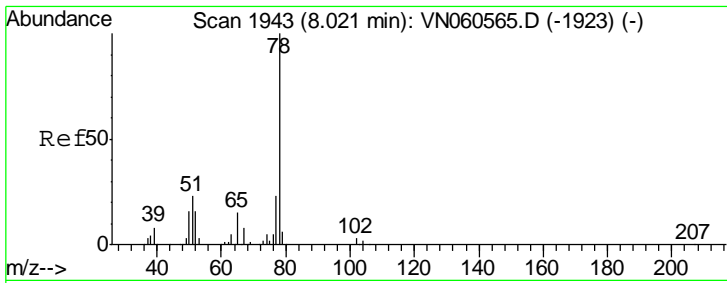
| Tgt Ion | Resp | Lower | Upper |
|---------|------|-------|-------|
| 43 | 100 | | |
| 61 | 0.4 | 10.6 | 15.8# |
| 70 | 0.0 | 7.9 | 11.9# |



#38
 Carbon Tetrachloride
 Concen: 6.694 ug/l
 RT: 7.64 min Scan# 1824
 Delta R.T. -0.11 min
 Lab File: VN060963.D
 Acq: 15 Apr 2020 15:52

| Tgt Ion | Resp | Lower | Upper |
|---------|------|-------|--------|
| 117 | 100 | | |
| 119 | 5.1 | 76.2 | 114.2# |
| 121 | 0.0 | 23.7 | 35.5# |

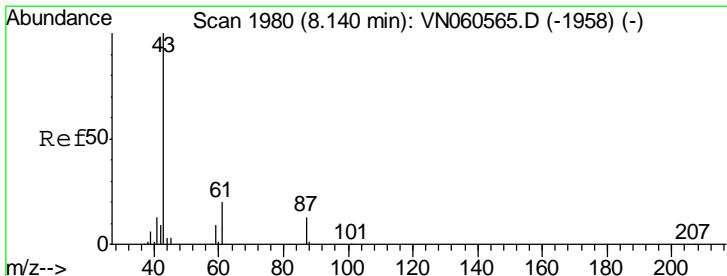
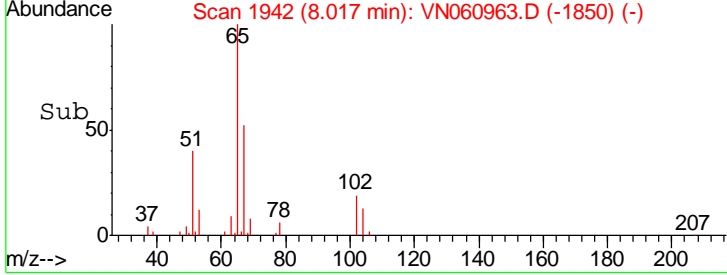
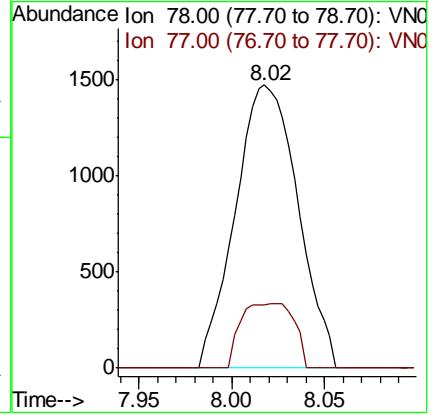
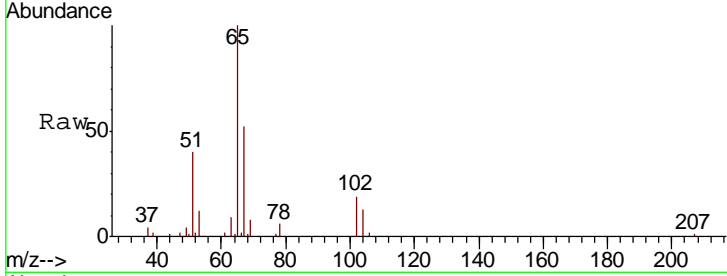




#40
Benzene
Concen: 0.519 ug/l
RT: 8.02 min Scan# 1942
Delta R.T. -0.00 min
Lab File: VN060963.D
Acq: 15 Apr 2020 15:52

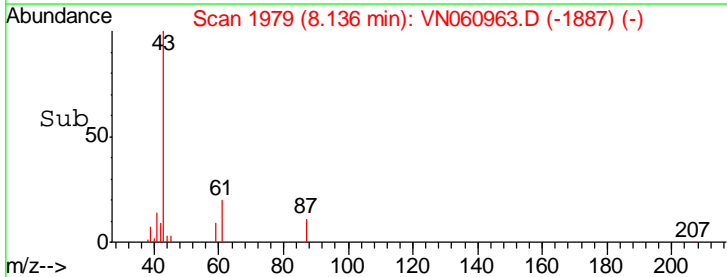
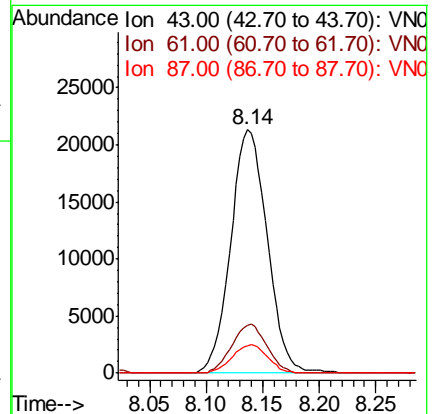
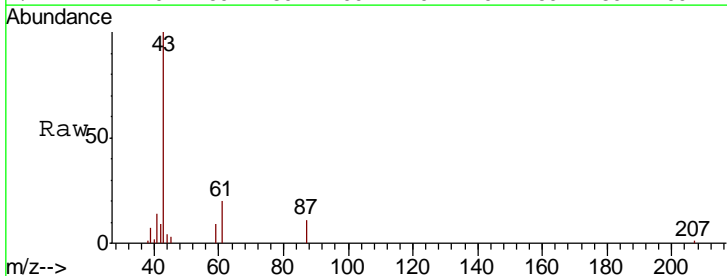
Instrument :
MSVOA_N
ClientSampled :

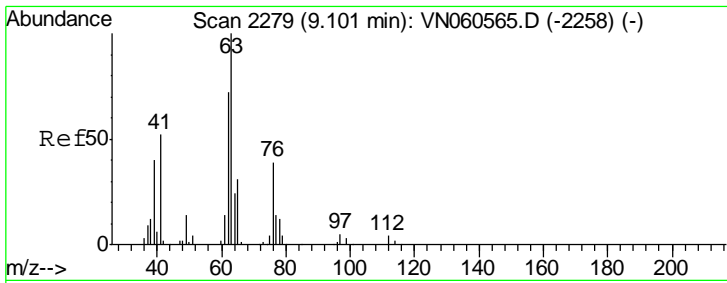
| Tgt Ion | Resp | Lower | Upper |
|---------|------|-------|-------|
| 78 | 3457 | | |
| 77 | 22.4 | 18.6 | 28.0 |



#43
Isopropyl Acetate
Concen: 12.203 ug/l
RT: 8.14 min Scan# 1979
Delta R.T. -0.00 min
Lab File: VN060963.D
Acq: 15 Apr 2020 15:52

| Tgt Ion | Resp | Lower | Upper |
|---------|-------|-------|-------|
| 43 | 47992 | | |
| 61 | 19.2 | 20.7 | 31.1# |
| 87 | 11.3 | 9.8 | 14.8 |

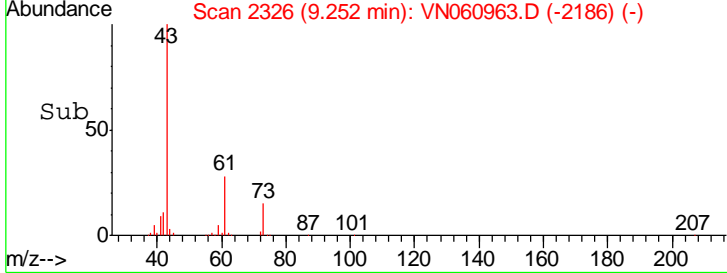
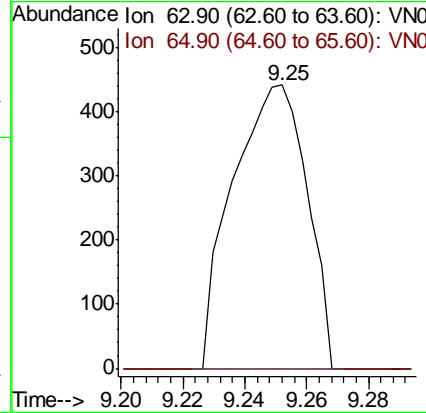
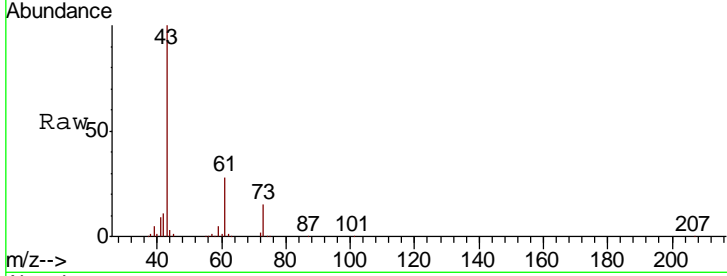




#45
 1,2-Dichloropropane
 Concen: 0.420 ug/l
 RT: 9.25 min Scan# 2326
 Delta R.T. 0.15 min
 Lab File: VN060963.D
 Acq: 15 Apr 2020 15:52

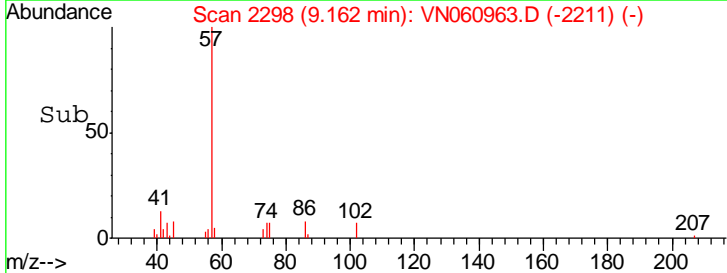
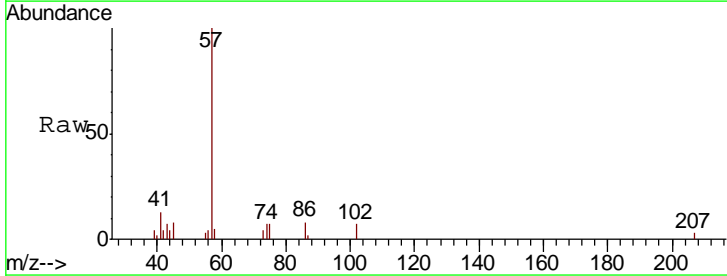
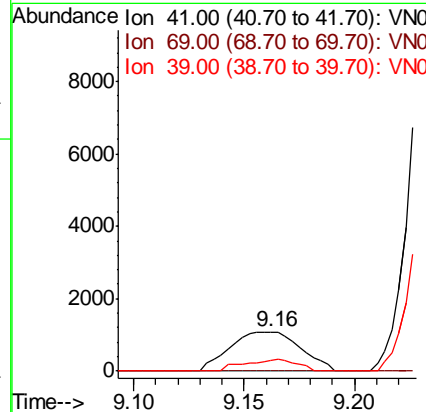
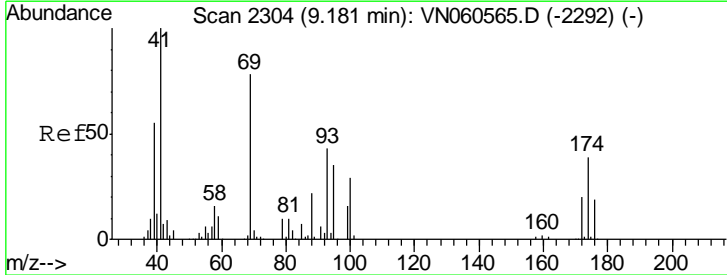
Instrument :
 MSVOA_N
 ClientSampled :

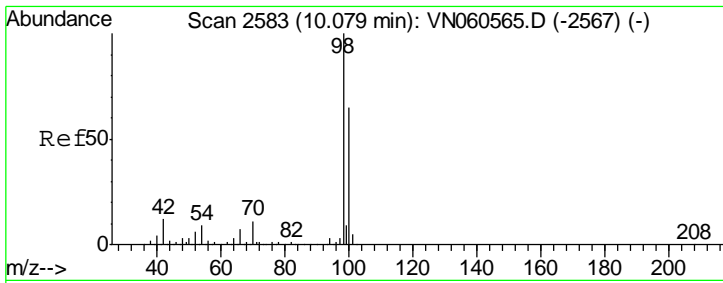
| Tgt Ion | Resp | Lower | Upper |
|---------|------|-------|-------|
| 63 | 100 | | |
| 65 | 0.0 | 25.4 | 38.0# |



#48
 Methyl methacrylate
 Concen: 1.362 ug/l
 RT: 9.16 min Scan# 2298
 Delta R.T. -0.02 min
 Lab File: VN060963.D
 Acq: 15 Apr 2020 15:52

| Tgt Ion | Resp | Lower | Upper |
|---------|------|-------|-------|
| 41 | 100 | | |
| 69 | 0.0 | 65.4 | 98.0# |
| 39 | 0.0 | 44.0 | 66.0# |

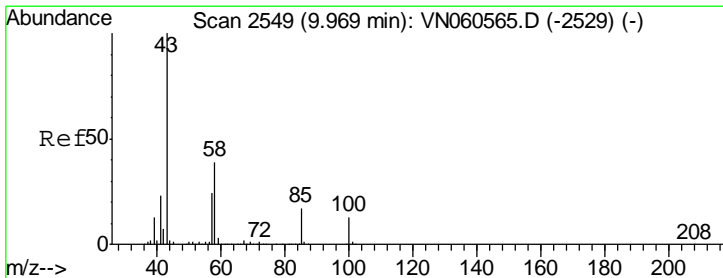
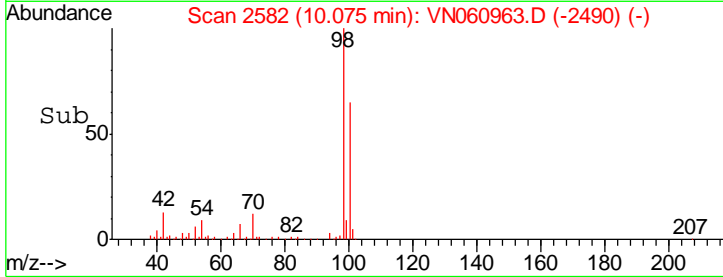
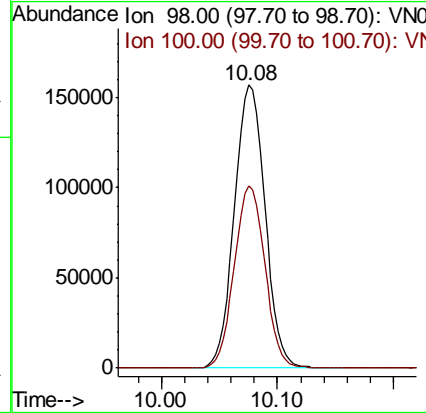
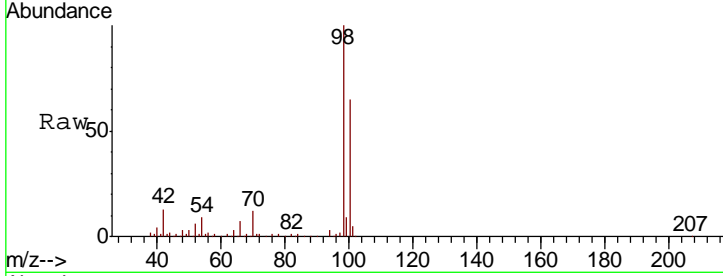




#50
 Toluene-d8
 Concen: 51.196 ug/l
 RT: 10.08 min Scan# 2582
 Delta R.T. -0.00 min
 Lab File: VN060963.D
 Acq: 15 Apr 2020 15:52

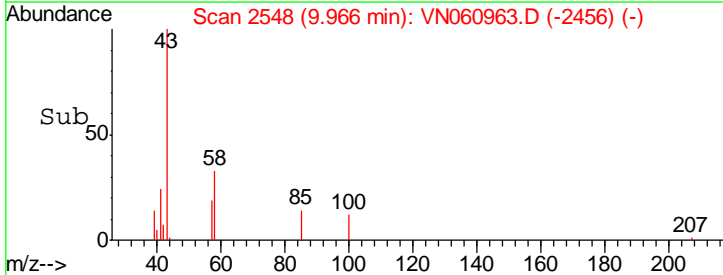
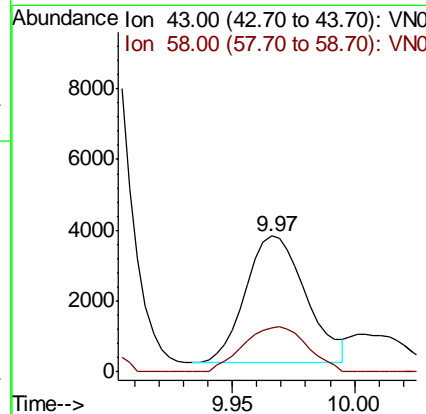
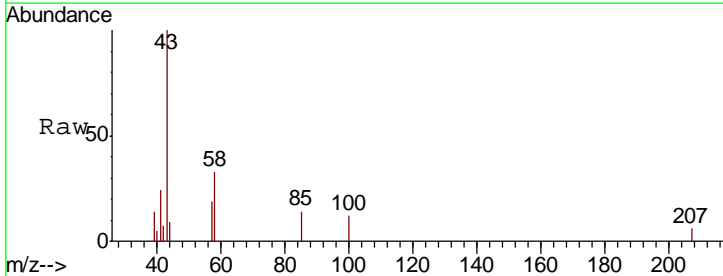
Instrument :
 MSVOA_N
 ClientSampled :

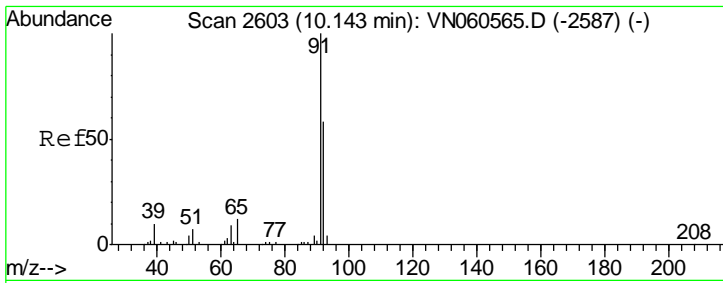
| Tgt Ion | Resp | Lower | Upper |
|---------|--------|-------|-------|
| 98 | 288195 | | |
| 100 | 64.4 | 51.8 | 77.8 |



#51
 4-Methyl-2-Pentanone
 Concen: 2.749 ug/l
 RT: 9.97 min Scan# 2548
 Delta R.T. -0.00 min
 Lab File: VN060963.D
 Acq: 15 Apr 2020 15:52

| Tgt Ion | Resp | Lower | Upper |
|---------|------|-------|-------|
| 43 | 6151 | | |
| 58 | 37.6 | 30.8 | 46.2 |

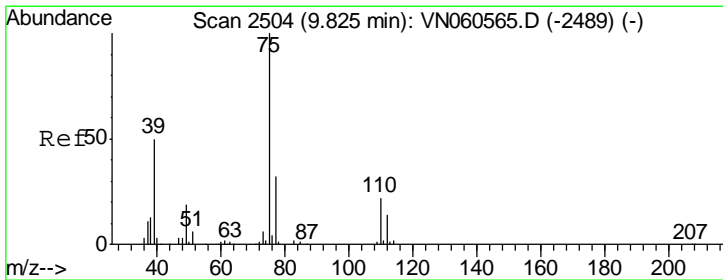
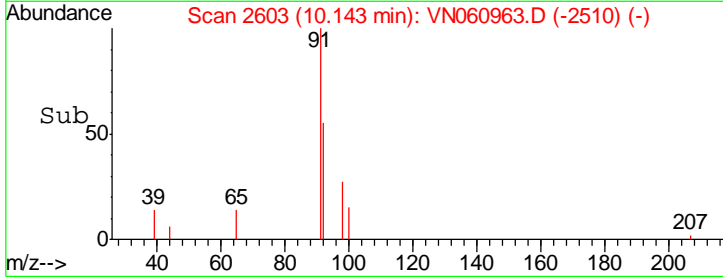
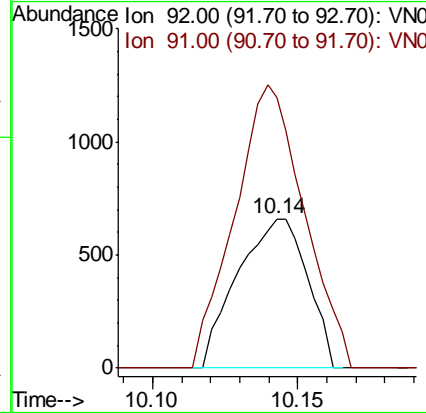
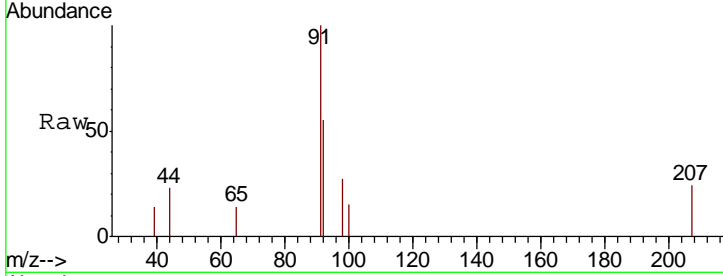




#52
 Toluene
 Concen: 0.274 ug/l
 RT: 10.14 min Scan# 2603
 Delta R.T. -0.00 min
 Lab File: VN060963.D
 Acq: 15 Apr 2020 15:52

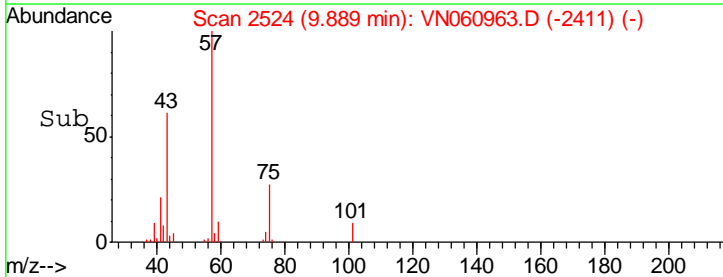
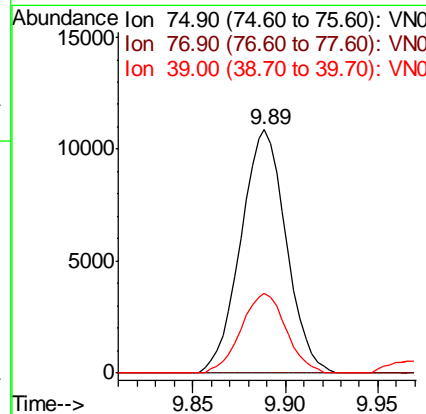
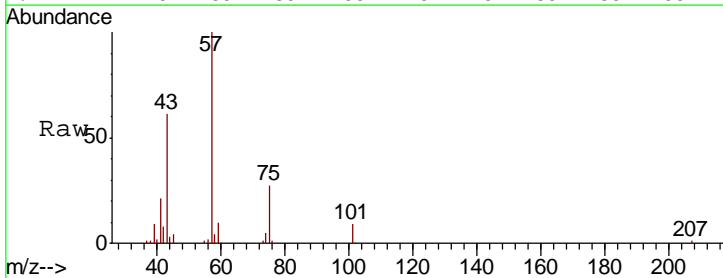
Instrument : MSVOA_N
 ClientSampled :

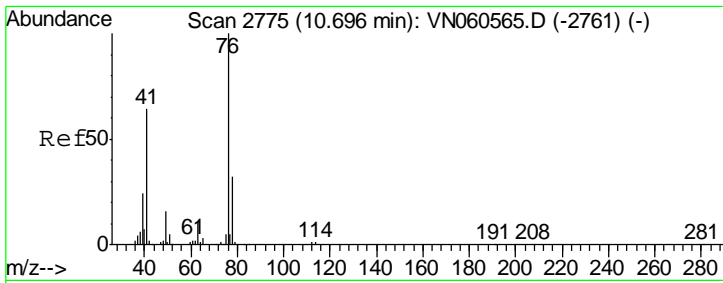
| Tgt Ion | Resp | Lower | Upper |
|---------|-------|-------|-------|
| 92 | 1104 | | |
| 92 | 100 | | |
| 91 | 188.9 | 137.6 | 206.4 |



#54
 cis-1,3-Dichloropropene
 Concen: 6.662 ug/l
 RT: 9.89 min Scan# 2524
 Delta R.T. 0.06 min
 Lab File: VN060963.D
 Acq: 15 Apr 2020 15:52

| Tgt Ion | Resp | Lower | Upper |
|---------|-------|-------|-------|
| 75 | 18542 | | |
| 75 | 100 | | |
| 77 | 0.0 | 25.4 | 38.0# |
| 39 | 32.6 | 40.2 | 60.4# |

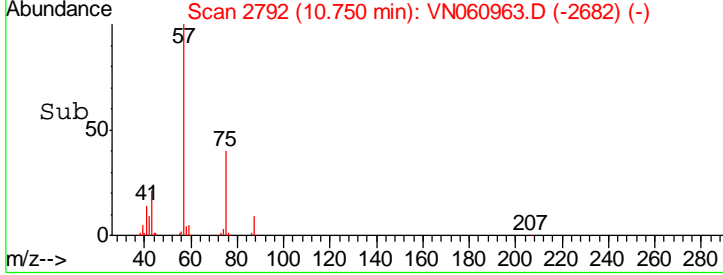
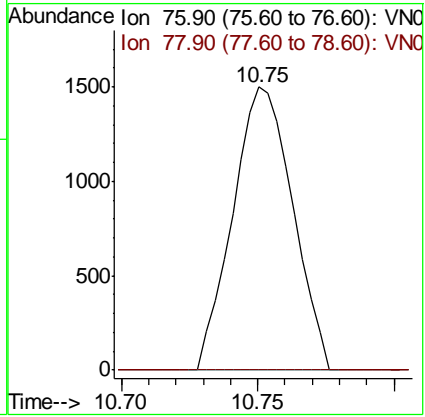
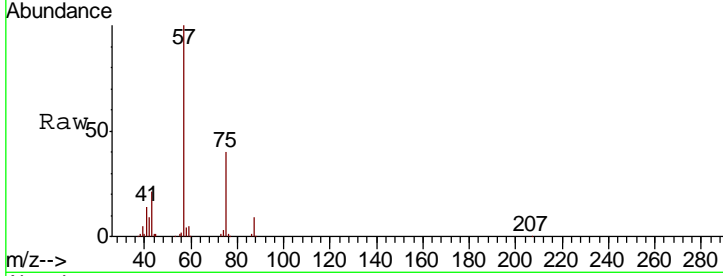




#57
 1,3-Dichloropropane
 Concen: 0.849 ug/l
 RT: 10.75 min Scan# 2792
 Delta R.T. 0.05 min
 Lab File: VN060963.D
 Acq: 15 Apr 2020 15:52

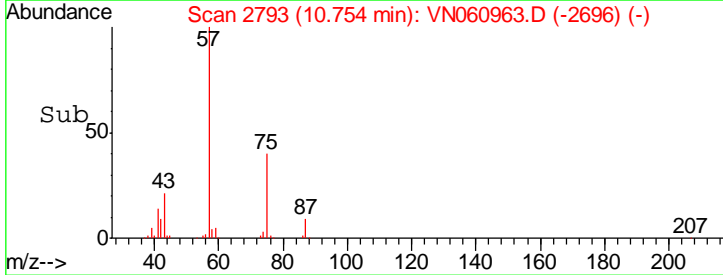
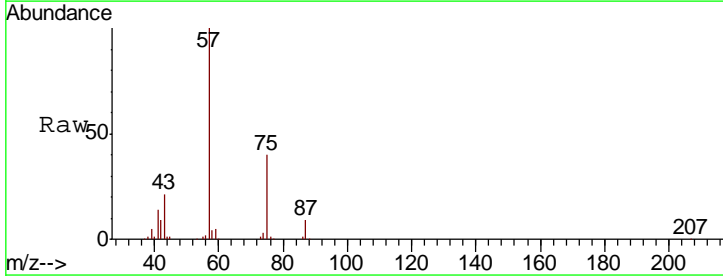
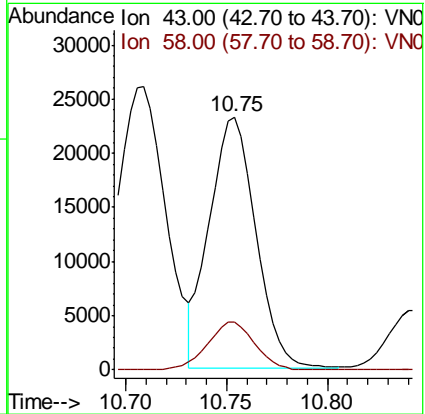
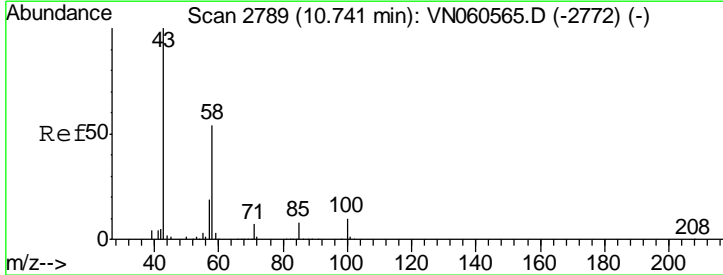
Instrument :
 MSVOA_N
 ClientSampled :

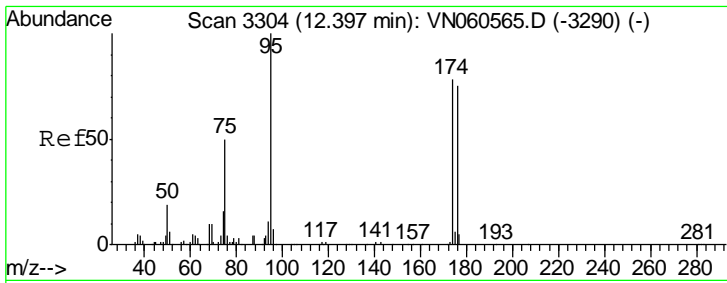
| Tgt Ion | Resp | Lower | Upper |
|---------|------|-------|-------|
| 76 | 100 | | |
| 78 | 0.0 | 25.8 | 38.6# |



#59
 2-Hexanone
 Concen: 23.151 ug/l
 RT: 10.75 min Scan# 2793
 Delta R.T. 0.01 min
 Lab File: VN060963.D
 Acq: 15 Apr 2020 15:52

| Tgt Ion | Resp | Lower | Upper |
|---------|------|-------|-------|
| 43 | 100 | | |
| 58 | 19.2 | 26.7 | 80.1# |

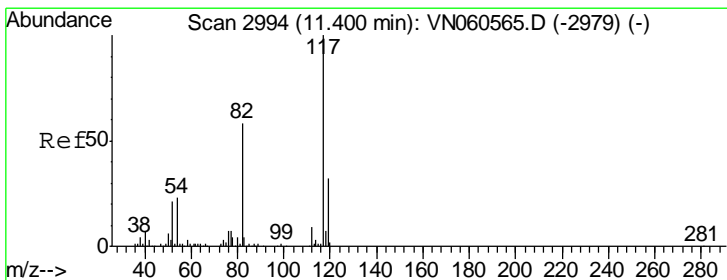
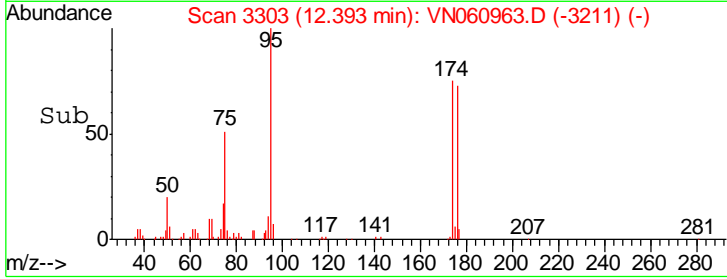
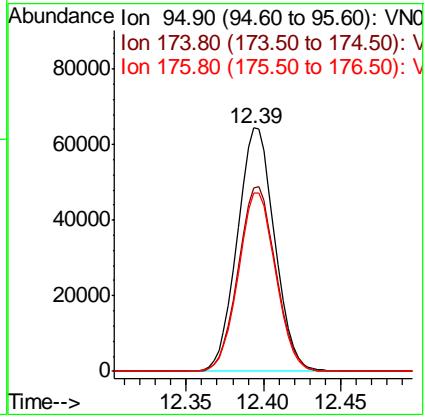
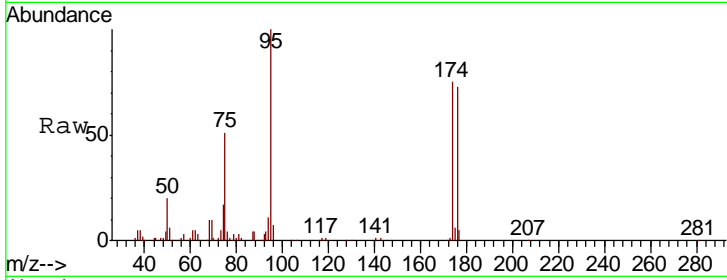




#62
 4-Bromofluorobenzene
 Concen: 52.372 ug/l
 RT: 12.39 min Scan# 3303
 Delta R.T. -0.00 min
 Lab File: VN060963.D
 Acq: 15 Apr 2020 15:52

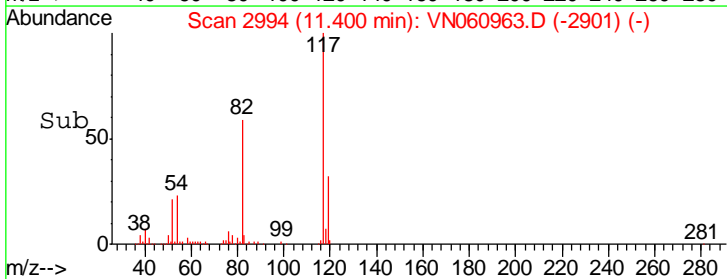
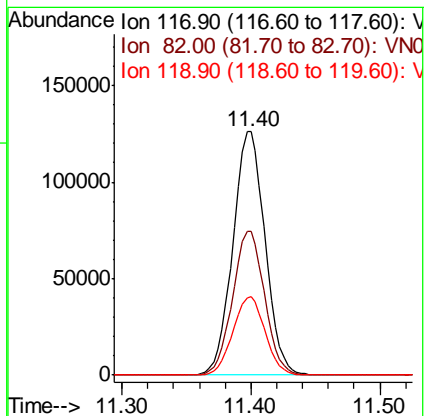
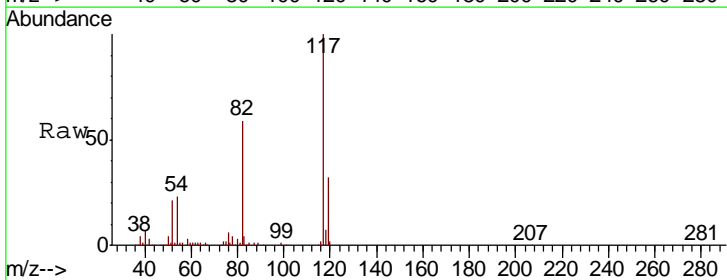
Instrument :
 MSVOA_N
 ClientSampled :

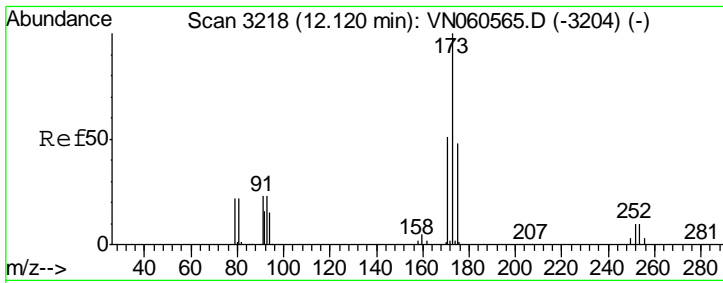
| Tgt Ion | Resp | Lower | Upper |
|---------|--------|-------|-------|
| 95 | 108045 | | |
| 174 | 76.3 | 0.0 | 157.6 |
| 176 | 73.3 | 0.0 | 150.6 |



#63
 Chlorobenzene-d5
 Concen: 50.000 ug/l
 RT: 11.40 min Scan# 2994
 Delta R.T. -0.00 min
 Lab File: VN060963.D
 Acq: 15 Apr 2020 15:52

| Tgt Ion | Resp | Lower | Upper |
|---------|--------|-------|-------|
| 117 | 218243 | | |
| 82 | 59.0 | 46.7 | 70.1 |
| 119 | 32.3 | 25.5 | 38.3 |

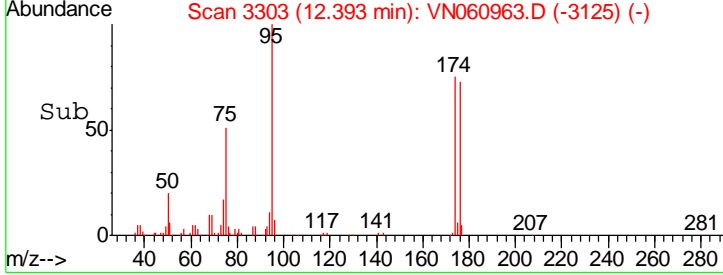
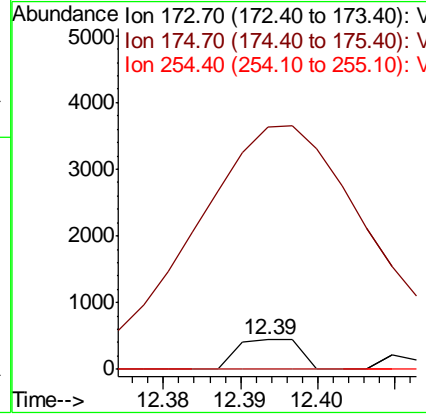
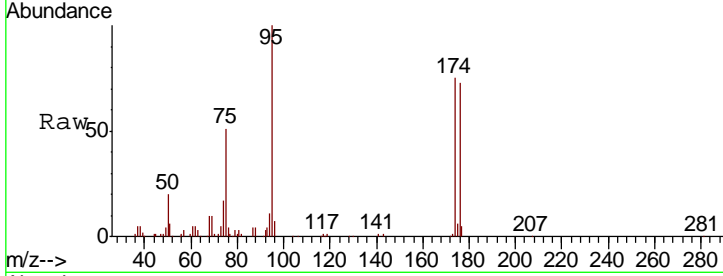




#71
 Bromoform
 Concen: 1.866 ug/l
 RT: 12.39 min Scan# 3303
 Delta R.T. 0.27 min
 Lab File: VN060963.D
 Acq: 15 Apr 2020 15:52

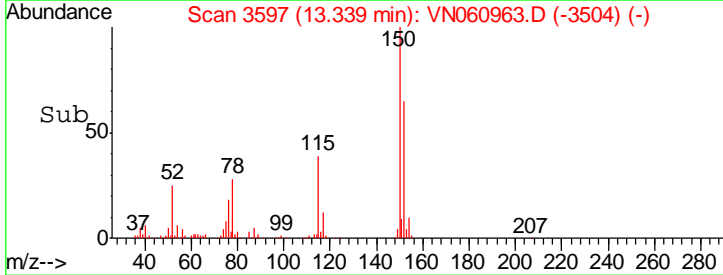
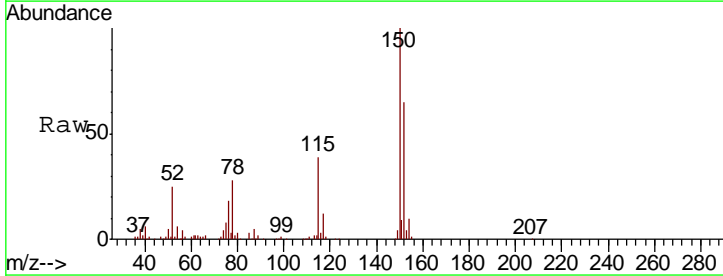
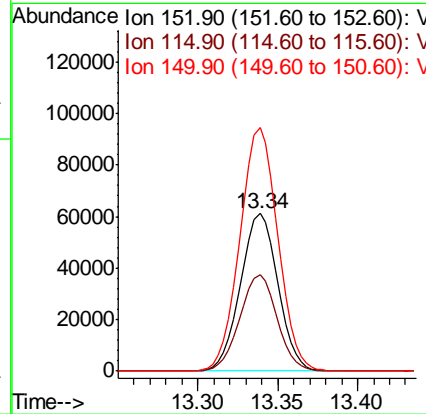
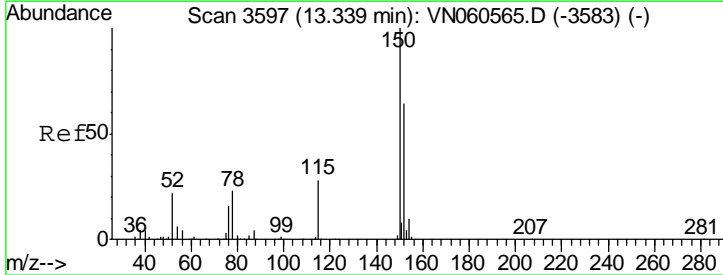
Instrument :
 MSVOA_N
 ClientSampled :

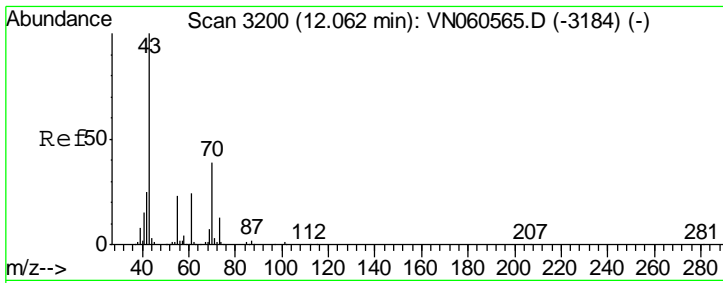
| Tgt Ion | Resp | Lower | Upper |
|---------|--------|-------|-------|
| 173 | 100 | | |
| 175 | 2064.0 | 24.1 | 72.4# |
| 254 | 0.0 | 0.0 | 0.0 |



#72
 1,4-Dichlorobenzene-d4
 Concen: 50.000 ug/l
 RT: 13.34 min Scan# 3597
 Delta R.T. -0.00 min
 Lab File: VN060963.D
 Acq: 15 Apr 2020 15:52

| Tgt Ion | Resp | Lower | Upper |
|---------|-------|-------|-------|
| 152 | 100 | | |
| 115 | 60.6 | 30.2 | 90.6 |
| 150 | 156.0 | 0.0 | 350.2 |

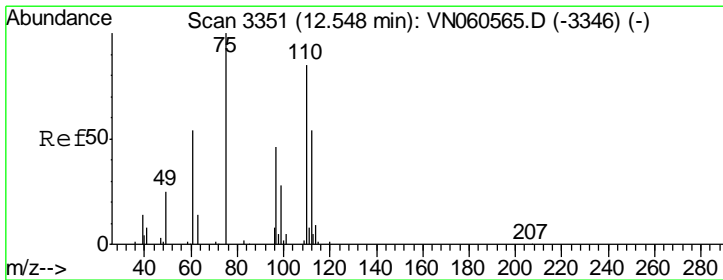
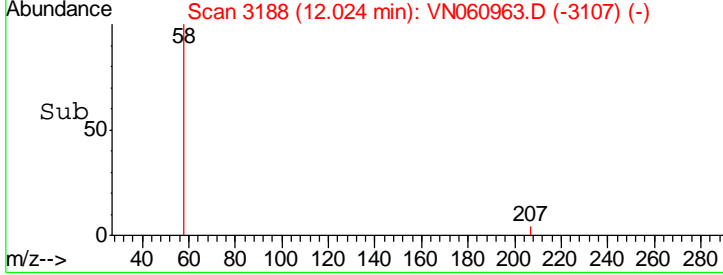
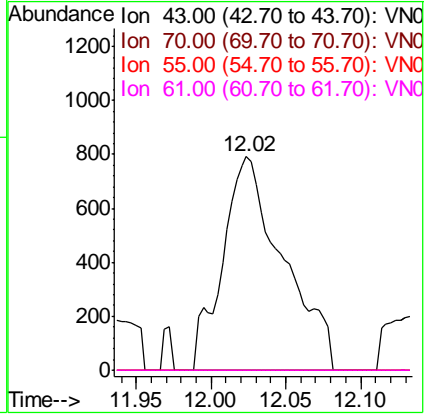
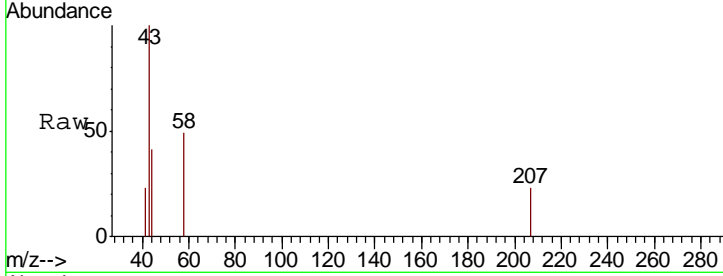




#74
 N-amyl acetate
 Concen: 0.659 ug/l
 RT: 12.02 min Scan# 3188
 Delta R.T. -0.04 min
 Lab File: VN060963.D
 Acq: 15 Apr 2020 15:52

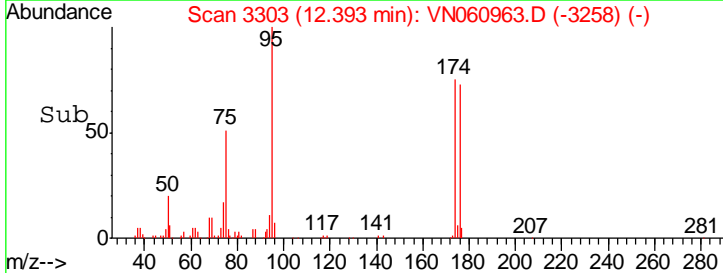
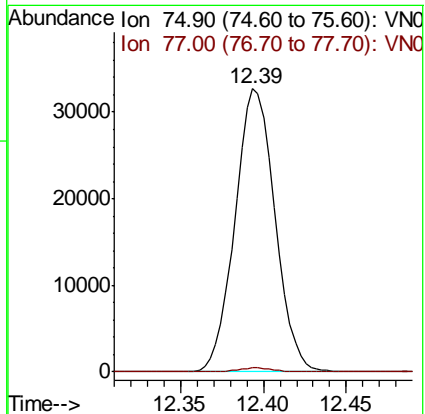
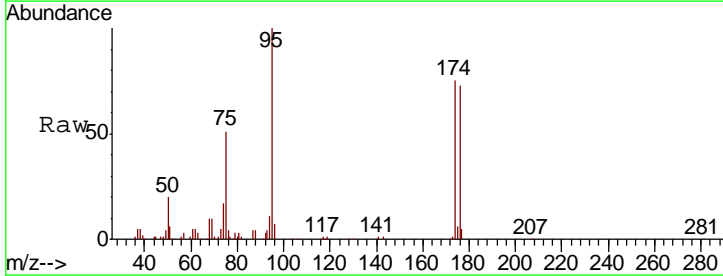
Instrument : MSVOA_N
 ClientSampled :

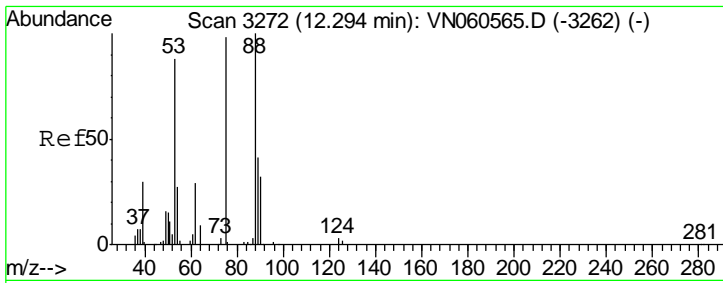
| Tgt Ion | Resp | Lower | Upper |
|---------|------|-------|-------|
| 43 | 100 | | |
| 70 | 0.0 | 31.1 | 46.7# |
| 55 | 0.0 | 18.6 | 27.8# |
| 61 | 0.0 | 18.9 | 28.3# |



#76
 1,2,3-Trichloropropane
 Concen: 26.075 ug/l
 RT: 12.39 min Scan# 3303
 Delta R.T. -0.15 min
 Lab File: VN060963.D
 Acq: 15 Apr 2020 15:52

| Tgt Ion | Resp | Lower | Upper |
|---------|------|-------|-------|
| 75 | 100 | | |
| 77 | 1.1 | 0.0 | 0.0# |

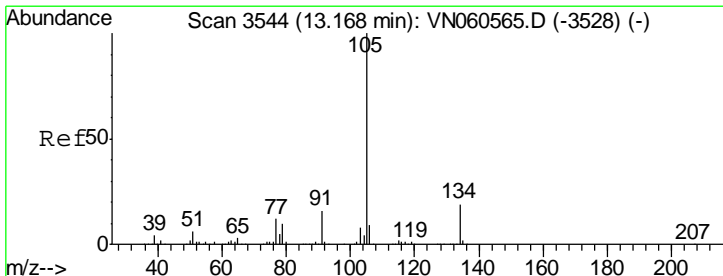
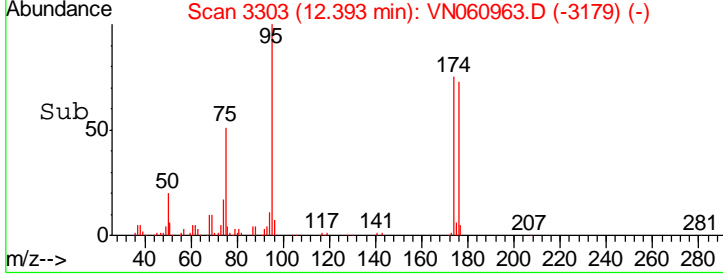
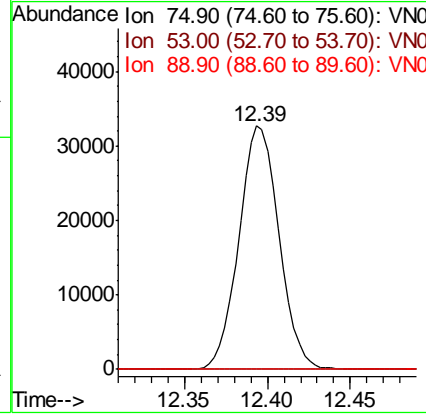
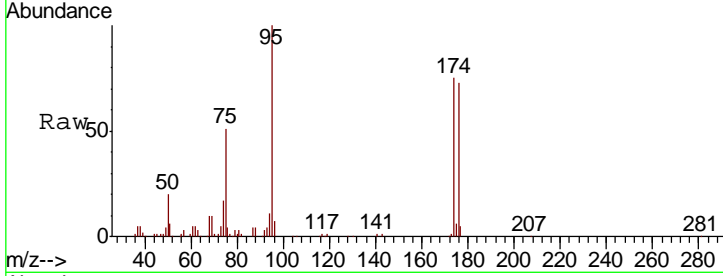




#81
 trans-1,4-Dichloro-2-butene
 Concen: 66.968 ug/l
 RT: 12.39 min Scan# 3303
 Delta R.T. 0.10 min
 Lab File: VN060963.D
 Acq: 15 Apr 2020 15:52

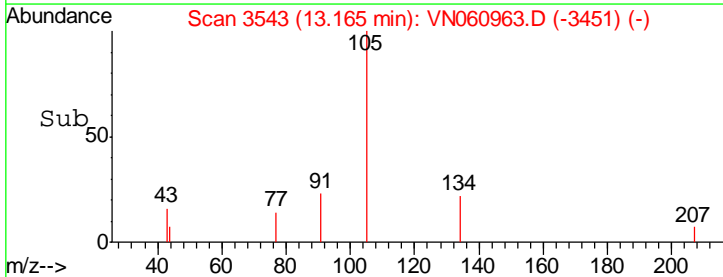
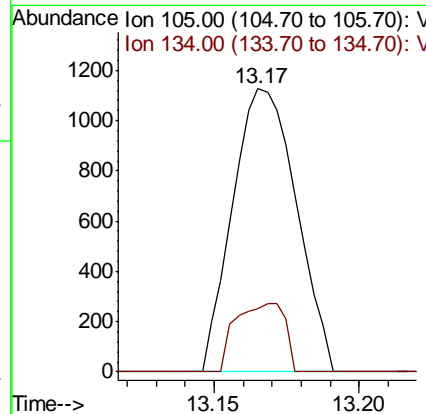
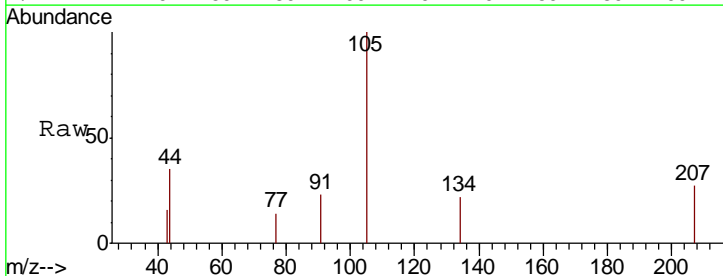
Instrument :
 MSVOA_N
 ClientSampled :

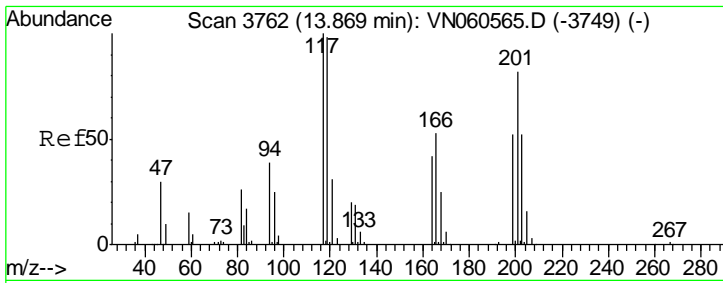
| Tgt Ion | Resp | Lower | Upper |
|---------|------|-------|--------|
| 75 | 100 | | |
| 53 | 0.0 | 73.0 | 109.4# |
| 89 | 0.0 | 34.8 | 52.2# |



#85
 sec-Butylbenzene
 Concen: 0.248 ug/l
 RT: 13.17 min Scan# 3543
 Delta R.T. -0.00 min
 Lab File: VN060963.D
 Acq: 15 Apr 2020 15:52

| Tgt Ion | Resp | Lower | Upper |
|---------|------|-------|-------|
| 105 | 100 | | |
| 134 | 18.7 | 9.6 | 28.8 |





#90
 Hexachloroethane
 Concen: 0.343 ug/l
 RT: 13.94 min Scan# 3784
 Delta R.T. 0.07 min
 Lab File: VN060963.D
 Acq: 15 Apr 2020 15:52

Instrument :
 MSVOA_N
 ClientSampled :

| Tot Ion | Ion | Ratio | Lower | Upper |
|---------|-----|-------|-------|--------|
| 310 | 117 | 100 | | |
| | 201 | 0.0 | 40.8 | 122.5# |

