

Data Path : Z:\voasrv\HPCHEM1\MSVOA_N\Data\VN041824\
 Data File : VN081790.D
 Acq On : 18 Apr 2024 16:18
 Operator : JC\MD
 Sample : P2123-03
 Misc : 5.0mL/MSVOA_N/WATER
 ALS Vial : 17 Sample Multiplier: 1

Instrument :
 MSVOA_N
 ClientSampleId :
 RPI-TB-01

Integration Parameters: RTEINT.P

Integrator: RTE
 Smoothing : ON Filtering: 5
 Sampling : 1 Min Area: 3 % of largest Peak
 Start Thrs: 0.2 Max Peaks: 100
 Stop Thrs : 0 Peak Location: TOP

If leading or trailing edge < 100 prefer < Baseline drop else tangent >
 Peak separation: 5

Method : Z:\voasrv\HPCHEM1\MSVOA_N\methods\82N041524W.M
 Title : SW846 8260

Signal : TIC: VN081790.D\data.ms

peak #	R.T. min	first scan	max scan	last scan	PK TY	peak height	corr. area	corr. % max.	% of total
1	2.812	140	146	149	rBV5	17183	34212	2.57%	0.467%
2	8.171	1046	1057	1061	rBV	189777	455848	34.22%	6.222%
3	8.224	1061	1066	1079	rVB	324398	733869	55.08%	10.018%
4	8.577	1117	1126	1139	rBV	202073	458392	34.41%	6.257%
5	9.106	1202	1216	1230	rBV	456804	976156	73.27%	13.325%
6	10.571	1456	1465	1474	rBV	691709	1332251	100.00%	18.186%
7	11.865	1677	1685	1696	rBV	670864	1188061	89.18%	16.217%
8	12.853	1840	1853	1863	rVB	515454	906121	68.01%	12.369%
9	13.794	2005	2013	2019	rBV	619045	1076654	80.81%	14.697%
10	13.841	2019	2021	2035	rVB7	30041	78951	5.93%	1.078%
11	15.806	2350	2355	2356	rVV4	17006	27032	2.03%	0.369%
12	15.829	2356	2359	2366	rVB5	29731	58298	4.38%	0.796%

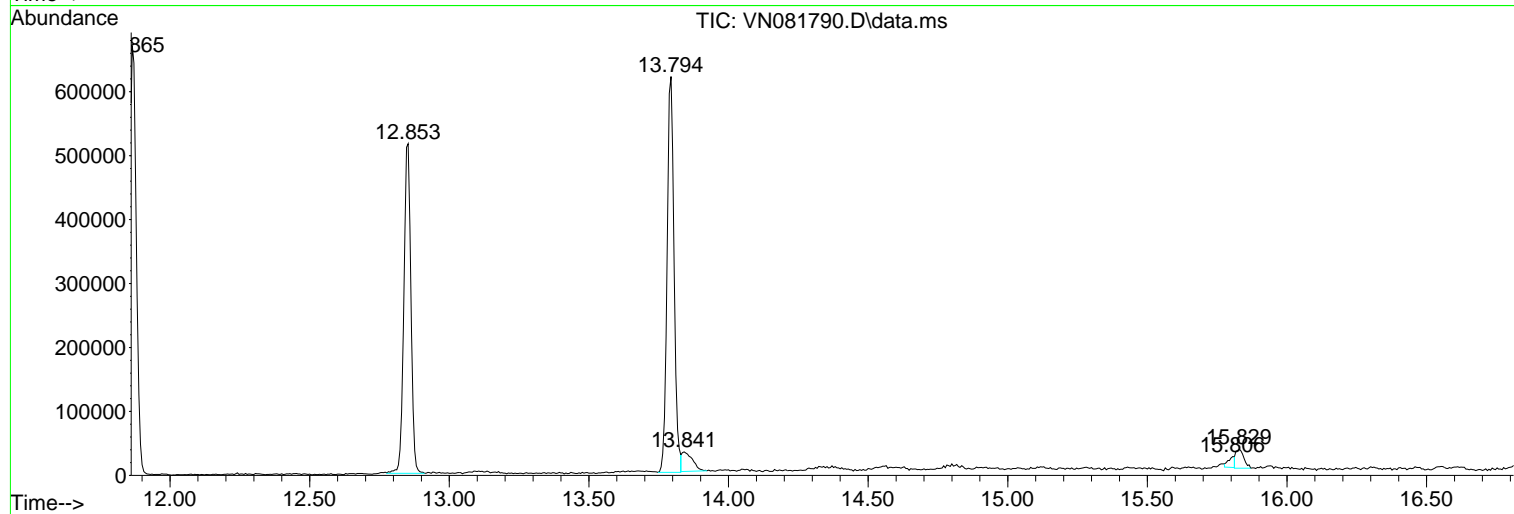
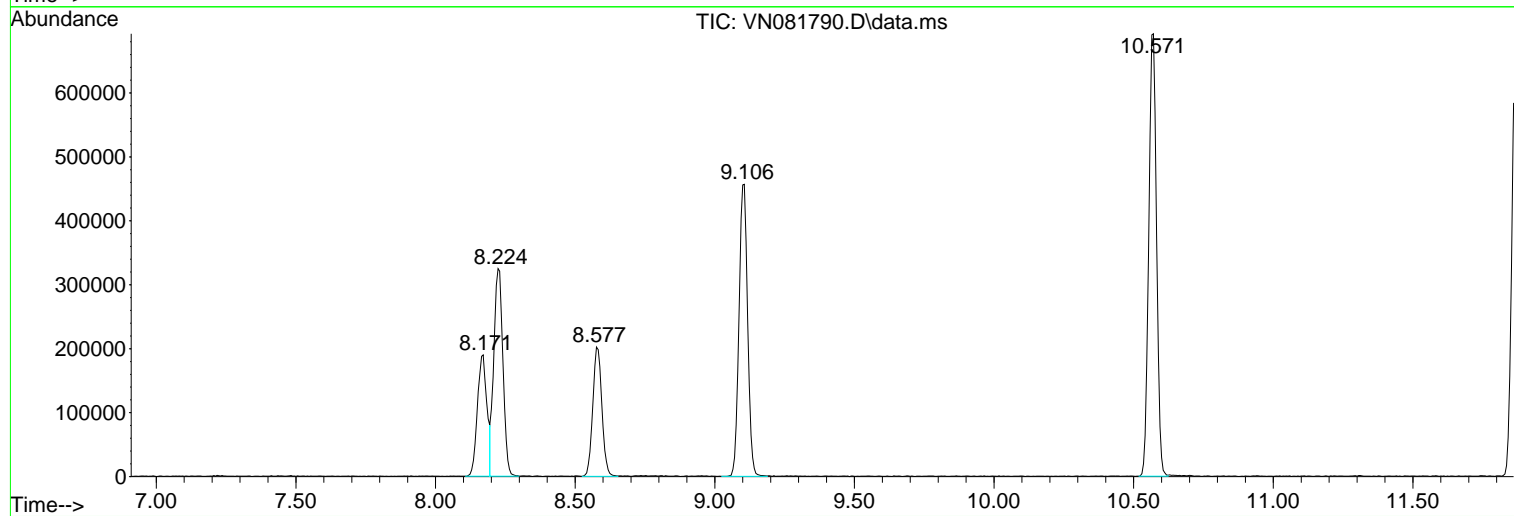
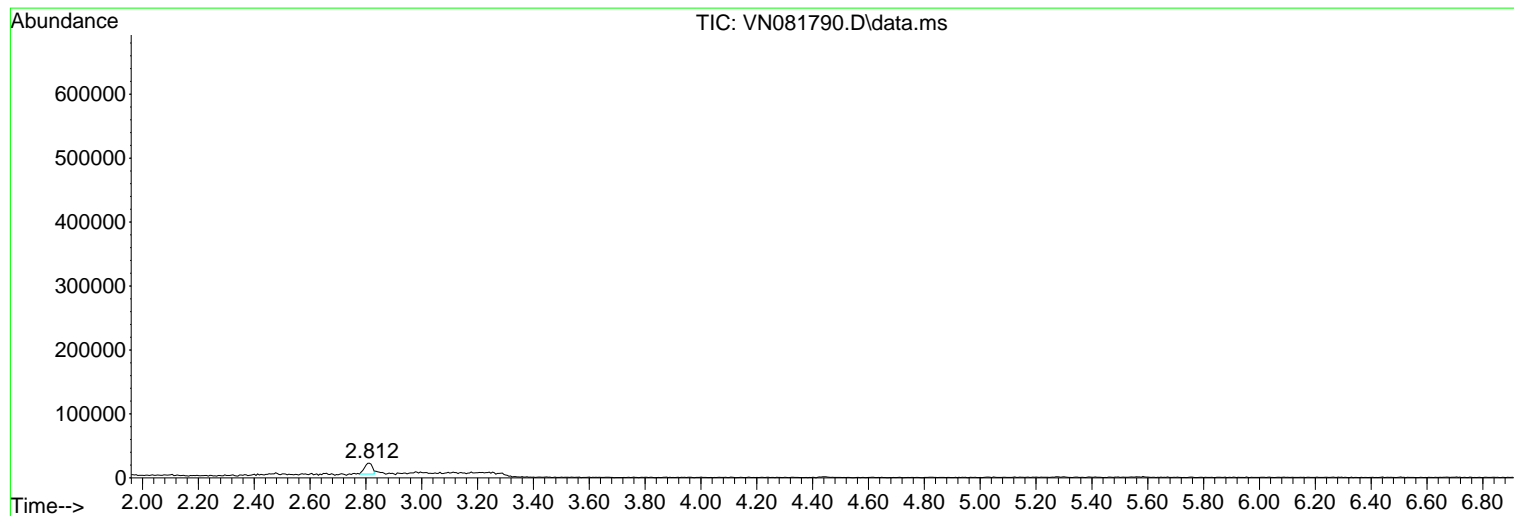
Sum of corrected areas: 7325845

Data Path : Z:\voasrv\HPCHEM1\MSVOA_N\Data\VN041824\
Data File : VN081790.D
Acq On : 18 Apr 2024 16:18
Operator : JC\MD
Sample : P2123-03
Misc : 5.0mL/MSVOA_N/WATER
ALS Vial : 17 Sample Multiplier: 1

Instrument :
MSVOA_N
ClientSampleId :
RPI-TB-01

Quant Method : Z:\voasrv\HPCHEM1\MSVOA_N\methods\82N041524W.M
Quant Title : SW846 8260

TIC Library : C:\Database\NIST20.L
TIC Integration Parameters: LSCINT.P



Library Search Compound Report

Data Path : Z:\voasrv\HPCHEM1\MSVOA_N\Data\VN041824\
Data File : VN081790.D
Acq On : 18 Apr 2024 16:18
Operator : JC\MD
Sample : P2123-03
Misc : 5.0mL/MSVOA_N/WATER
ALS Vial : 17 Sample Multiplier: 1

Instrument :
MSVOA_N
ClientSampleId :
RPI-TB-01

Quant Method : Z:\voasrv\HPCHEM1\MSVOA_N\methods\82N041524W.M
Quant Title : SW846 8260

TIC Library : C:\Database\NIST20.L
TIC Integration Parameters: LSCINT.P

No Library Search Compounds Detected

Data Path : Z:\voasrv\HPCHEM1\MSVOA_N\Data\VN041824\
Data File : VN081790.D
Acq On : 18 Apr 2024 16:18
Operator : JC\MD
Sample : P2123-03
Misc : 5.0mL/MSVOA_N/WATER
ALS Vial : 17 Sample Multiplier: 1

Instrument :
MSVOA_N
ClientSampleId :
RPI-TB-01

Quant Method : Z:\voasrv\HPCHEM1\MSVOA_N\methods\82N041524W.M
Quant Title : SW846 8260

TIC Library : C:\Database\NIST20.L
TIC Integration Parameters: LSCINT.P

TIC Top Hit name	RT	EstConc	Units	Response	#	RT	Resp	Conc
------------------	----	---------	-------	----------	---	----	------	------
