

Data Path : Z:\voasrv\HPCHEM1\MSVOA\_N\Data\VN041922\  
 Data File : VN072041.D  
 Acq On : 19 Apr 2022 11:46  
 Operator : JC\MD  
 Sample : VN0419MBL01  
 Misc : 5.00g/10mL/100uL/5.00mL/MSVOA\_N/MEOH  
 ALS Vial : 3 Sample Multiplier: 1

Instrument :  
 MSVOA\_N  
 ClientSampleId :  
 VN0419MBL01

Quant Time: Apr 20 01:23:12 2022  
 Quant Method : Z:\voasrv\HPCHEM1\MSVOA\_N\methods\82N033022W.M  
 Quant Title : SW846 8260  
 QLast Update : Thu Mar 31 01:57:54 2022  
 Response via : Initial Calibration

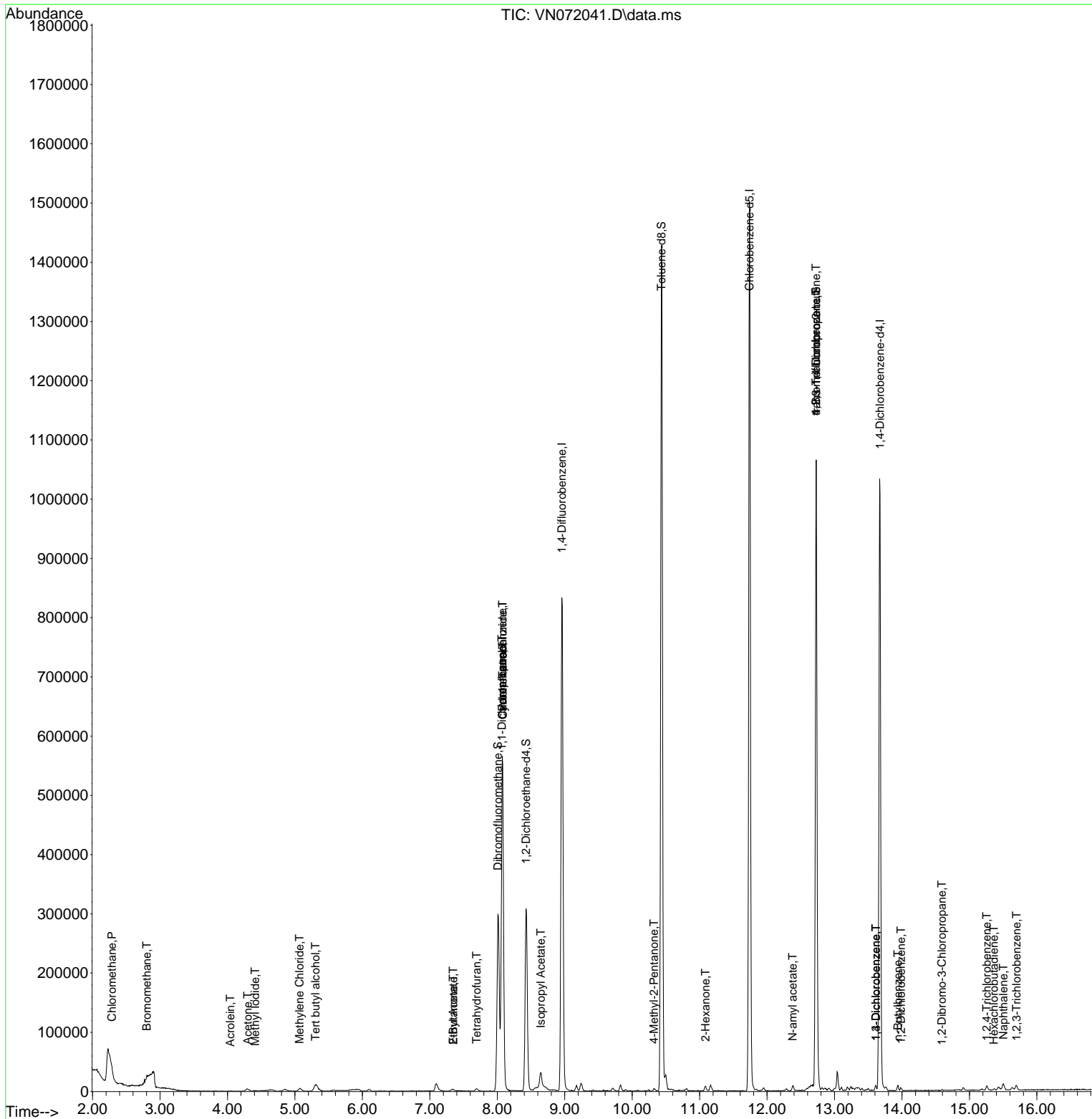
Compound	R.T.	QIon	Response	Conc	Units	Dev(Min)
Internal Standards						
1) Pentafluorobenzene	8.075	168	477574	50.000	ug/l	0.00
34) 1,4-Difluorobenzene	8.957	114	807044	50.000	ug/l	0.00
63) Chlorobenzene-d5	11.739	117	931607	50.000	ug/l	0.00
72) 1,4-Dichlorobenzene-d4	13.674	152	321880	50.000	ug/l	0.00
System Monitoring Compounds						
33) 1,2-Dichloroethane-d4	8.428	65	255230	46.813	ug/l	0.00
Spiked Amount	50.000	Range 61 - 141	Recovery	=	93.620%	
35) Dibromofluoromethane	8.010	113	226027	47.595	ug/l	0.00
Spiked Amount	50.000	Range 69 - 133	Recovery	=	95.180%	
50) Toluene-d8	10.433	98	1062822	54.708	ug/l	0.00
Spiked Amount	50.000	Range 65 - 126	Recovery	=	109.420%	
62) 4-Bromofluorobenzene	12.727	95	367962	58.565	ug/l	0.00
Spiked Amount	50.000	Range 58 - 135	Recovery	=	117.120%	
Target Compounds						
						Qvalue
3) Chloromethane	2.287	50	2159	0.449	ug/l	95
5) Bromomethane	2.805	94	1196	0.348	ug/l #	72
10) Methyl Iodide	4.410	142	2281	0.394	ug/l #	74
11) Tert butyl alcohol	5.304	59	12871	14.547	ug/l #	72
13) Acrolein	4.040	56	394	0.365	ug/l #	16
16) Acetone	4.299	43	3366	1.445	ug/l #	82
18) Methyl Acetate	4.863	43	6747	Below Cal	#	76
20) Methylene Chloride	5.069	84	4289	0.873	ug/l #	77
25) 2-Butanone	7.345	43	3779	1.125	ug/l #	65
29) Tetrahydrofuran	7.692	42	3363	1.546	ug/l	95
31) Cyclohexane	8.081	56	7557	1.019	ug/l #	1
36) 1,1-Dichloropropene	8.069	75	31704	4.781	ug/l #	48
37) Ethyl Acetate	7.345	43	3779	0.521	ug/l #	67
38) Carbon Tetrachloride	8.081	117	42476	6.535	ug/l #	16
43) Isopropyl Acetate	8.645	43	36070	2.988	ug/l #	53
51) 4-Methyl-2-Pentanone	10.322	43	3469	0.500	ug/l	91
59) 2-Hexanone	11.086	43	6615	1.354	ug/l	100
74) N-amyl acetate	12.380	43	5117	0.658	ug/l	95
76) 1,2,3-Trichloropropane	12.727	75	173021	23.204	ug/l #	1
81) trans-1,4-Dichloro-2-b...	12.727	75	173021	71.908	ug/l #	10
87) 1,3-Dichlorobenzene	13.616	146	2821	0.260	ug/l	96
88) 1,4-Dichlorobenzene	13.616	146	2821	0.267	ug/l	96
89) n-Butylbenzene	13.939	91	5441	0.361	ug/l	97
91) 1,2-Dichlorobenzene	13.986	146	2669	0.251	ug/l	94
92) 1,2-Dibromo-3-Chloropr...	14.592	75	467	0.333	ug/l	75
93) 1,2,4-Trichlorobenzene	15.257	180	3762	2.790	ug/l	93
94) Hexachlorobutadiene	15.363	225	1017	0.324	ug/l #	54
95) Naphthalene	15.504	128	13236	4.637	ug/l	96
96) 1,2,3-Trichlorobenzene	15.698	180	4076	3.196	ug/l	94

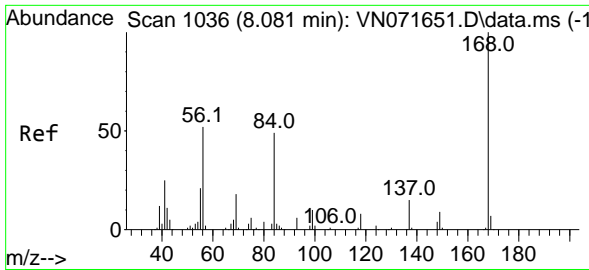
(#) = qualifier out of range (m) = manual integration (+) = signals summed

Data Path : Z:\voasrv\HPCHEM1\MSVOA\_N\Data\VN041922\  
 Data File : VN072041.D  
 Acq On : 19 Apr 2022 11:46  
 Operator : JC\MD  
 Sample : VN0419MBL01  
 Misc : 5.00g/10mL/100uL/5.00mL/MSVOA\_N/MEOH  
 ALS Vial : 3 Sample Multiplier: 1

Instrument :  
 MSVOA\_N  
 ClientSampleId :  
 VN0419MBL01

Quant Time: Apr 20 01:23:12 2022  
 Quant Method : Z:\voasrv\HPCHEM1\MSVOA\_N\methods\82N033022W.M  
 Quant Title : SW846 8260  
 QLast Update : Thu Mar 31 01:57:54 2022  
 Response via : Initial Calibration

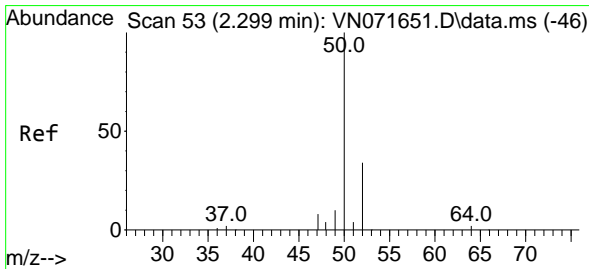
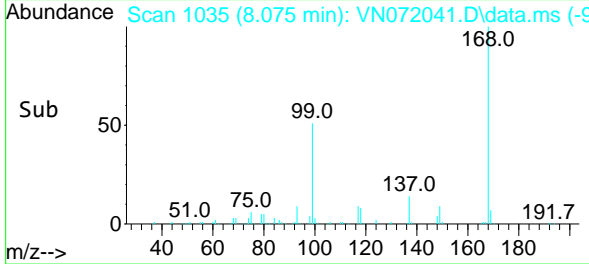
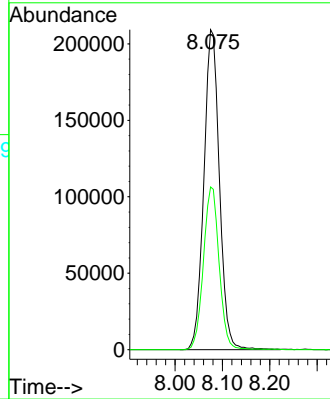
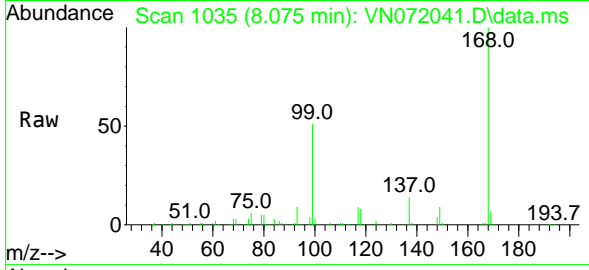




#1  
 Pentafluorobenzene  
 Concen: 50.000 ug/l  
 RT: 8.075 min Scan# 10  
 Delta R.T. -0.006 min  
 Lab File: VN072041.D  
 Acq: 19 Apr 2022 11:46

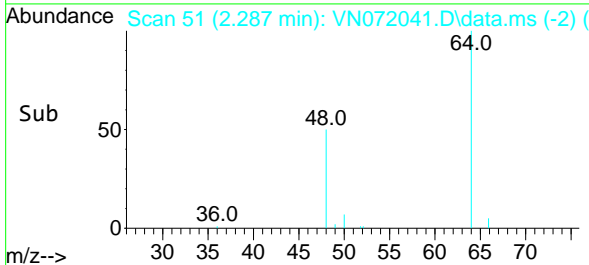
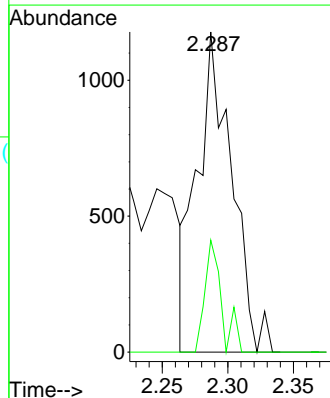
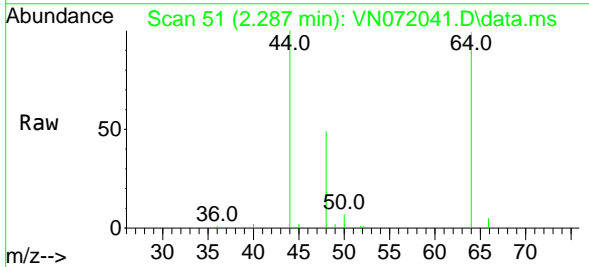
Instrument :  
 MSVOA\_N  
 ClientSampleId :  
 VN0419MBL01

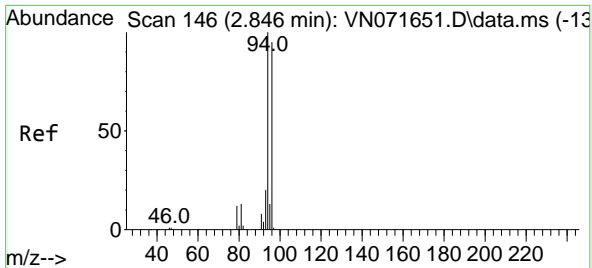
Tgt Ion:168 Resp: 477574  
 Ion Ratio Lower Upper  
 168 100  
 99 50.9 42.3 63.5



#3  
 Chloromethane  
 Concen: 0.449 ug/l  
 RT: 2.287 min Scan# 51  
 Delta R.T. -0.012 min  
 Lab File: VN072041.D  
 Acq: 19 Apr 2022 11:46

Tgt Ion: 50 Resp: 2159  
 Ion Ratio Lower Upper  
 50 100  
 52 35.0 25.7 38.5

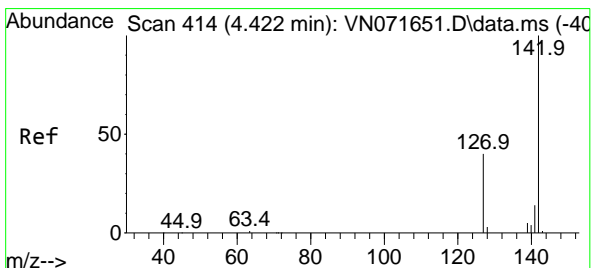
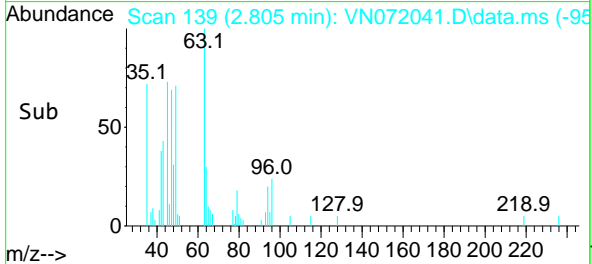
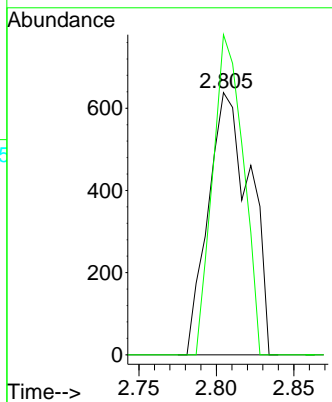
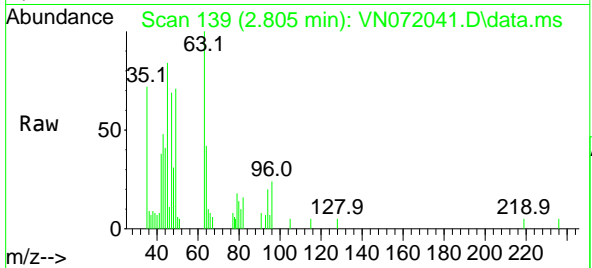




#5  
 Bromomethane  
 Concen: 0.348 ug/l  
 RT: 2.805 min Scan# 11  
 Delta R.T. -0.041 min  
 Lab File: VN072041.D  
 Acq: 19 Apr 2022 11:46

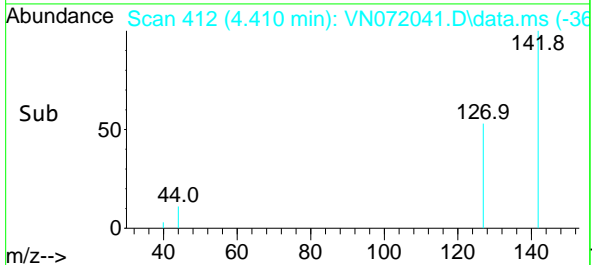
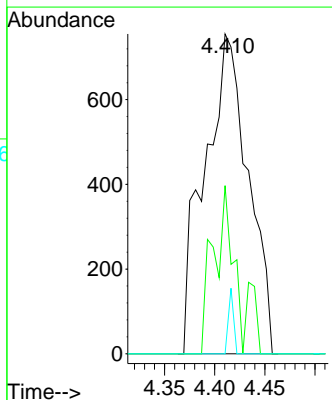
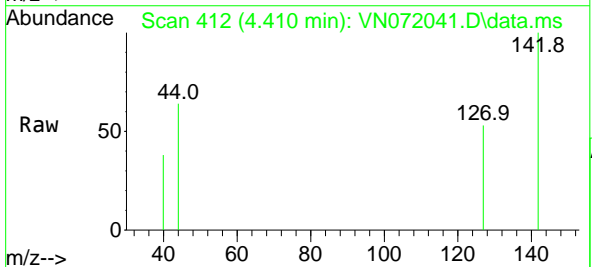
Instrument :  
 MSVOA\_N  
 ClientSampleId :  
 VN0419MBL01

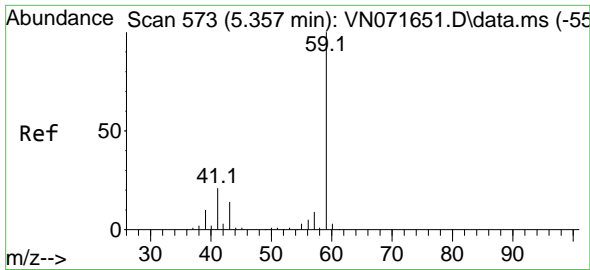
Tgt Ion: 94 Resp: 1196  
 Ion Ratio Lower Upper  
 94 100  
 96 122.1 76.0 114.0#



#10  
 Methyl Iodide  
 Concen: 0.394 ug/l  
 RT: 4.410 min Scan# 412  
 Delta R.T. -0.012 min  
 Lab File: VN072041.D  
 Acq: 19 Apr 2022 11:46

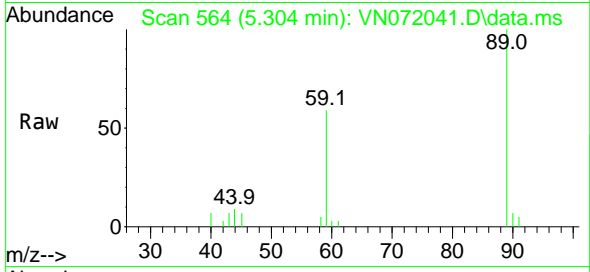
Tgt Ion: 142 Resp: 2281  
 Ion Ratio Lower Upper  
 142 100  
 127 23.7 31.3 46.9#  
 141 2.4 11.2 16.8#



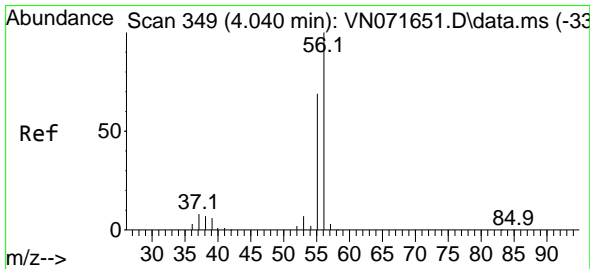
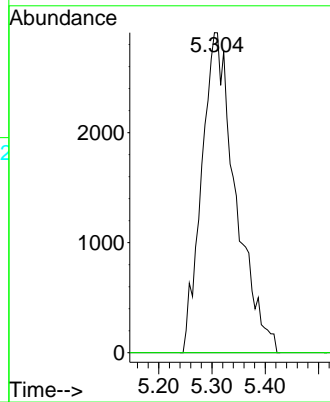
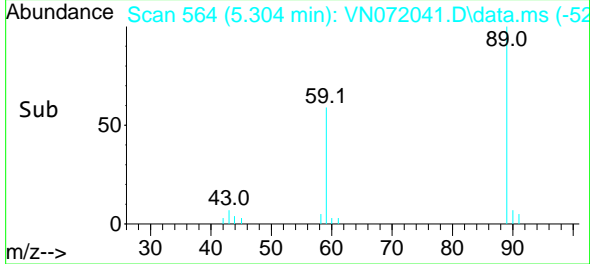


#11  
 Tert butyl alcohol  
 Concen: 14.547 ug/l  
 RT: 5.304 min Scan# 50  
 Delta R.T. -0.053 min  
 Lab File: VN072041.D  
 Acq: 19 Apr 2022 11:46

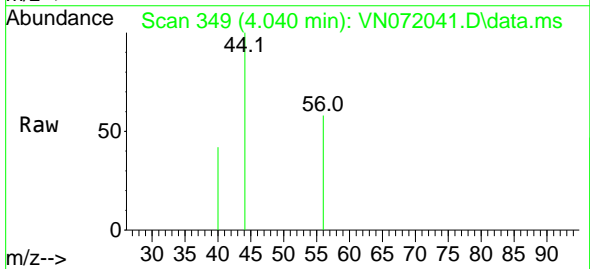
Instrument :  
 MSVOA\_N  
 ClientSampleId :  
 VN0419MBL01



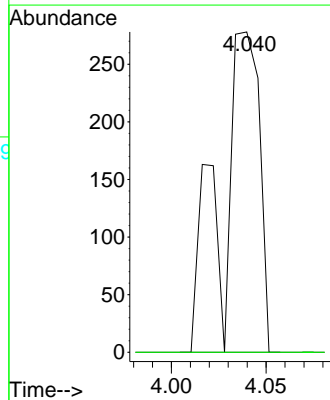
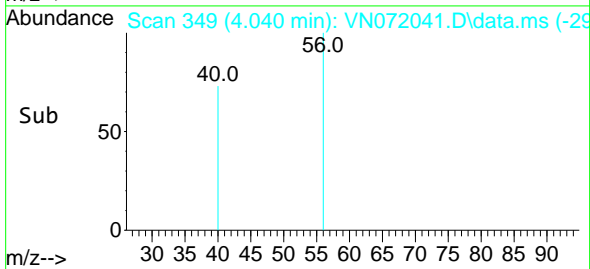
Tgt Ion: 59 Resp: 12871  
 Ion Ratio Lower Upper  
 59 100  
 57 0.0 8.3 12.5#

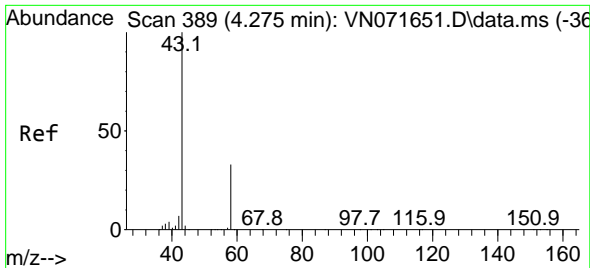


#13  
 Acrolein  
 Concen: 0.365 ug/l  
 RT: 4.040 min Scan# 349  
 Delta R.T. -0.000 min  
 Lab File: VN072041.D  
 Acq: 19 Apr 2022 11:46



Tgt Ion: 56 Resp: 394  
 Ion Ratio Lower Upper  
 56 100  
 55 0.0 54.8 82.2#

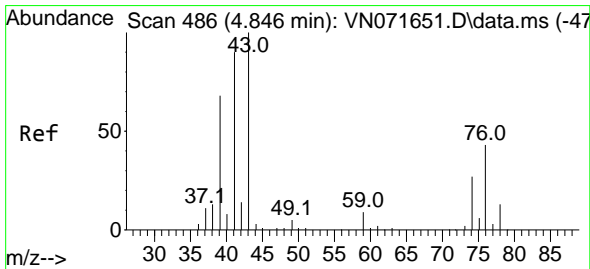
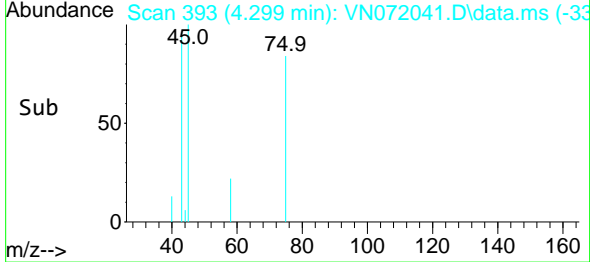
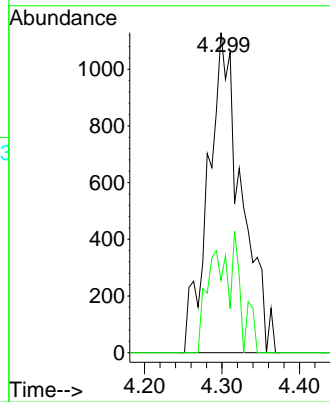
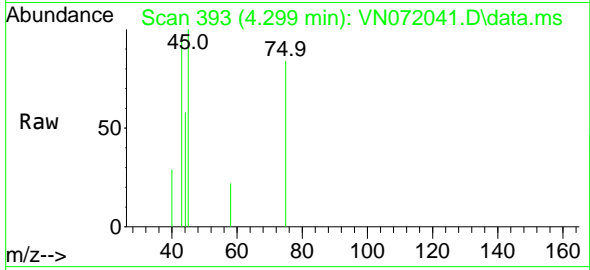




#16  
 Acetone  
 Concen: 1.445 ug/l  
 RT: 4.299 min Scan# 393  
 Delta R.T. 0.024 min  
 Lab File: VN072041.D  
 Acq: 19 Apr 2022 11:46

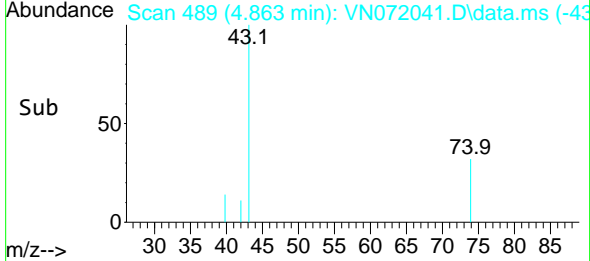
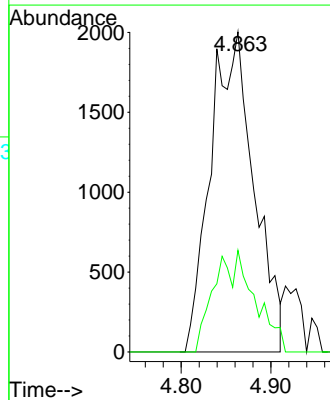
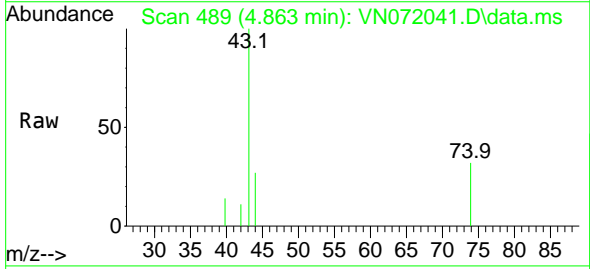
Instrument : MSVOA\_N  
 ClientSampleId : VN0419MBL01

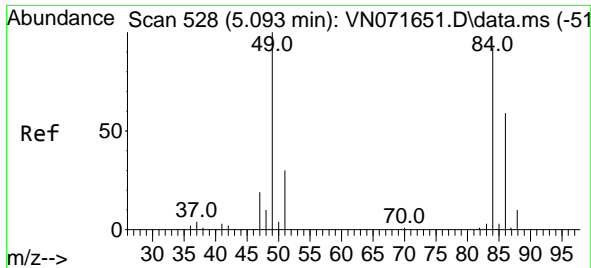
Tgt Ion: 43 Resp: 3366  
 Ion Ratio Lower Upper  
 43 100  
 58 22.6 26.0 39.0#



#18  
 Methyl Acetate  
 Concen: Below Cal  
 RT: 4.863 min Scan# 489  
 Delta R.T. 0.017 min  
 Lab File: VN072041.D  
 Acq: 19 Apr 2022 11:46

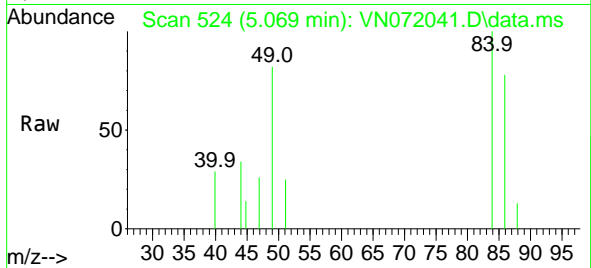
Tgt Ion: 43 Resp: 6747  
 Ion Ratio Lower Upper  
 43 100  
 74 14.5 21.6 32.4#





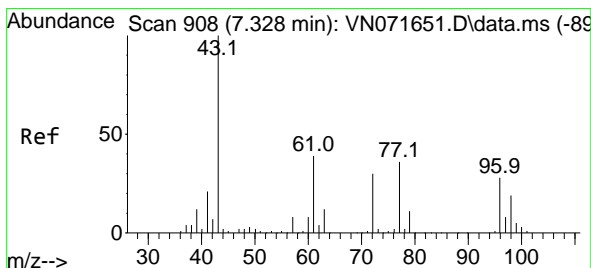
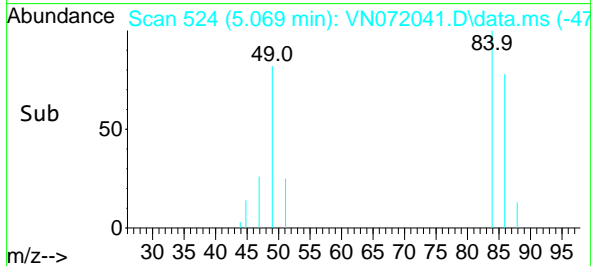
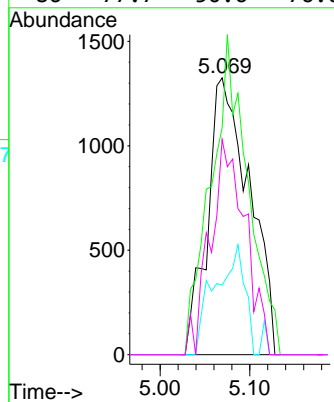
#20  
 Methylene Chloride  
 Concen: 0.873 ug/l  
 RT: 5.069 min Scan# 511  
 Delta R.T. -0.024 min  
 Lab File: VN072041.D  
 Acq: 19 Apr 2022 11:46

Instrument :  
 MSVOA\_N  
 ClientSampleId :  
 VN0419MBL01



Tgt Ion: 84 Resp: 4289

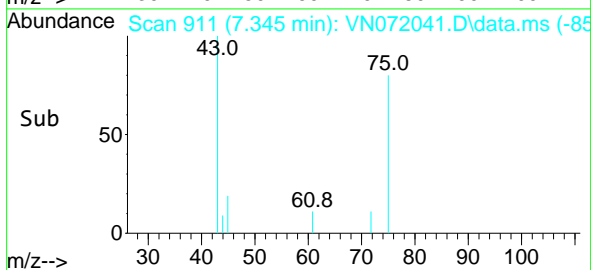
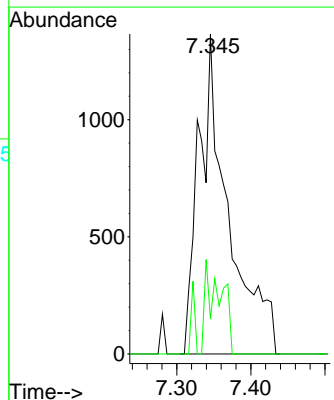
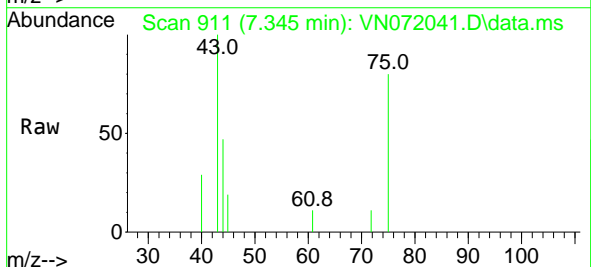
Ion	Ratio	Lower	Upper
84	100		
49	82.0	88.3	132.5#
51	25.1	28.2	42.2#
86	77.7	50.6	76.0#

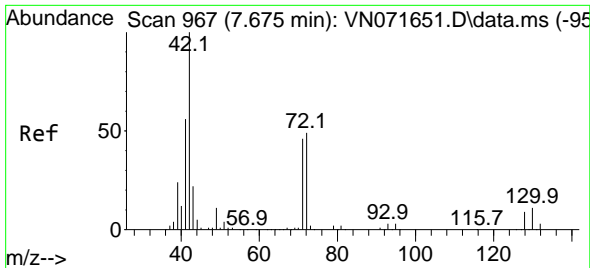


#25  
 2-Butanone  
 Concen: 1.125 ug/l  
 RT: 7.345 min Scan# 911  
 Delta R.T. 0.017 min  
 Lab File: VN072041.D  
 Acq: 19 Apr 2022 11:46

Tgt Ion: 43 Resp: 3779

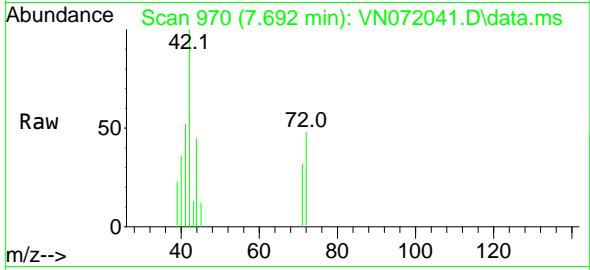
Ion	Ratio	Lower	Upper
43	100		
72	11.0	23.7	35.5#





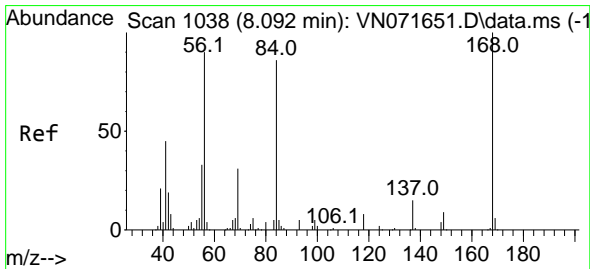
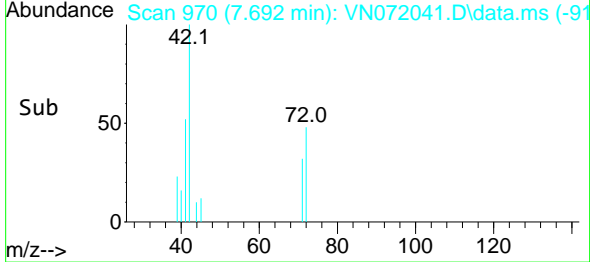
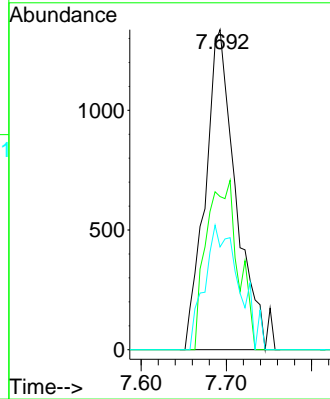
#29  
 Tetrahydrofuran  
 Concen: 1.546 ug/l  
 RT: 7.692 min Scan# 91  
 Delta R.T. 0.017 min  
 Lab File: VN072041.D  
 Acq: 19 Apr 2022 11:46

Instrument :  
 MSVOA\_N  
 ClientSampleId :  
 VN0419MBL01

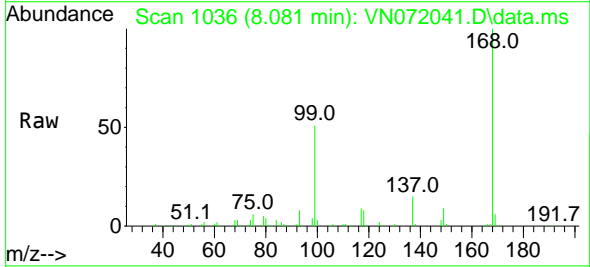


Tgt Ion: 42 Resp: 3363

Ion	Ratio	Lower	Upper
42	100		
72	54.2	39.7	59.5
71	43.2	36.6	55.0

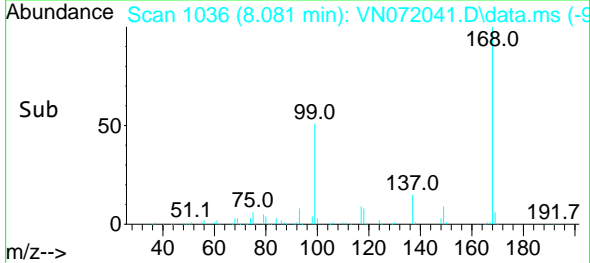
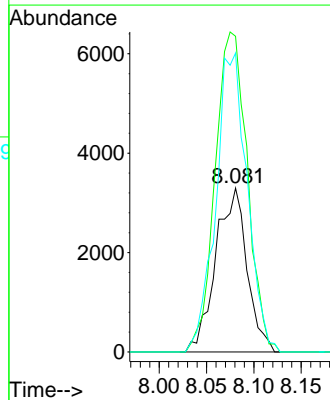


#31  
 Cyclohexane  
 Concen: 1.019 ug/l  
 RT: 8.081 min Scan# 1036  
 Delta R.T. -0.011 min  
 Lab File: VN072041.D  
 Acq: 19 Apr 2022 11:46

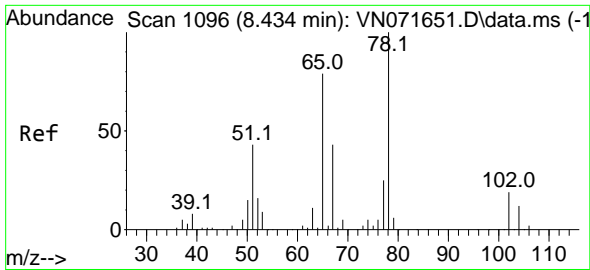


Tgt Ion: 56 Resp: 7557

Ion	Ratio	Lower	Upper
56	100		
69	192.6	27.8	41.8#
84	182.3	76.9	115.3#

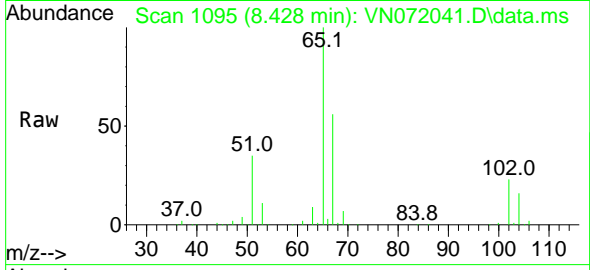




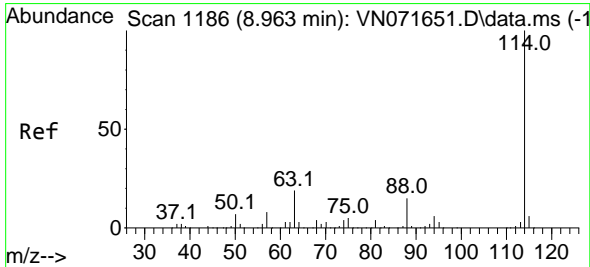
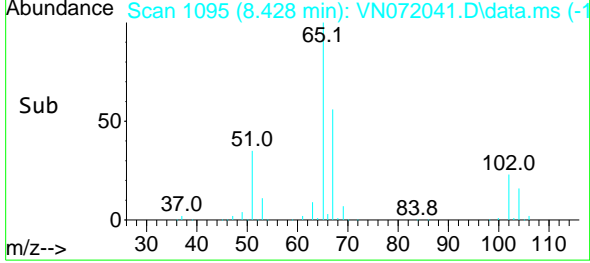
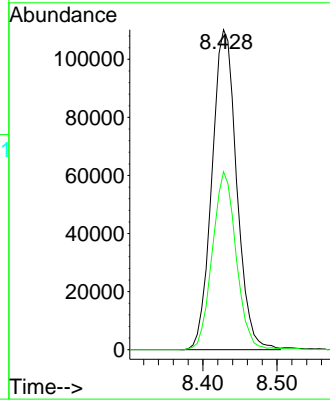


#33  
 1,2-Dichloroethane-d4  
 Concen: 46.813 ug/l  
 RT: 8.428 min Scan# 1095  
 Delta R.T. -0.006 min  
 Lab File: VN072041.D  
 Acq: 19 Apr 2022 11:46

Instrument : MSVOA\_N  
 ClientSampleId : VN0419MBL01

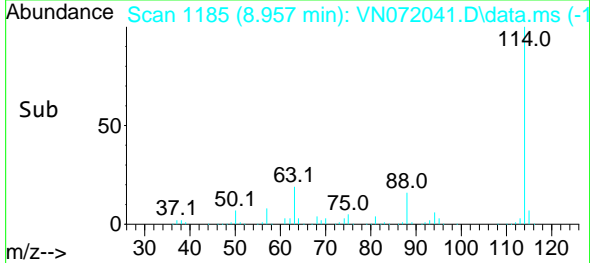
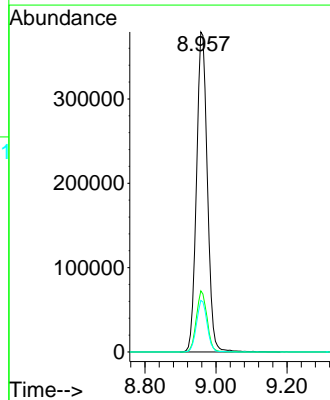
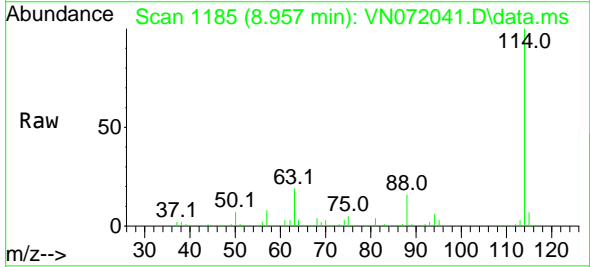


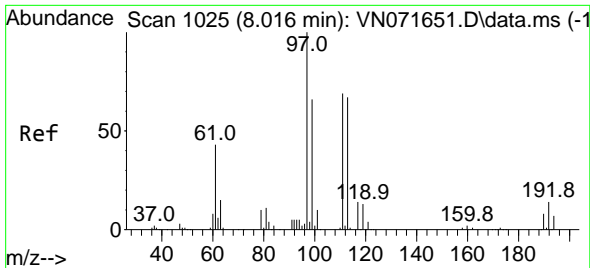
Tgt Ion: 65 Resp: 255230  
 Ion Ratio Lower Upper  
 65 100  
 67 53.8 0.0 104.8



#34  
 1,4-Difluorobenzene  
 Concen: 50.000 ug/l  
 RT: 8.957 min Scan# 1185  
 Delta R.T. -0.006 min  
 Lab File: VN072041.D  
 Acq: 19 Apr 2022 11:46

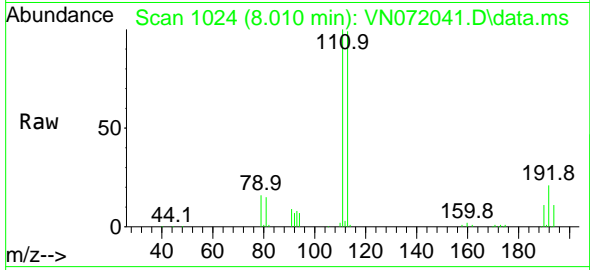
Tgt Ion: 114 Resp: 807044  
 Ion Ratio Lower Upper  
 114 100  
 63 19.1 0.0 40.0  
 88 16.1 0.0 32.6





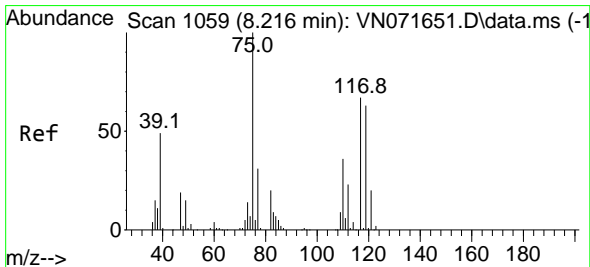
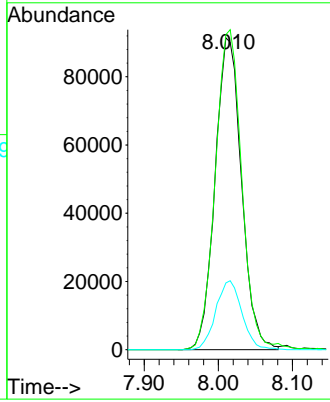
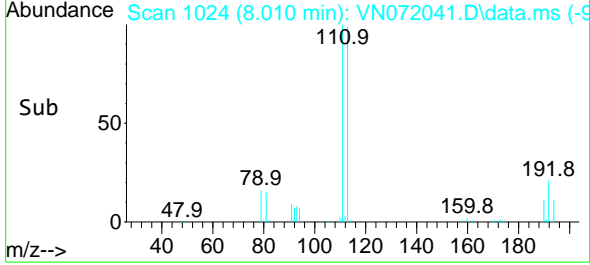
#35  
 Dibromofluoromethane  
 Concen: 47.595 ug/l  
 RT: 8.010 min Scan# 1024  
 Delta R.T. -0.006 min  
 Lab File: VN072041.D  
 Acq: 19 Apr 2022 11:46

Instrument : MSVOA\_N  
 ClientSampleId : VN0419MBL01

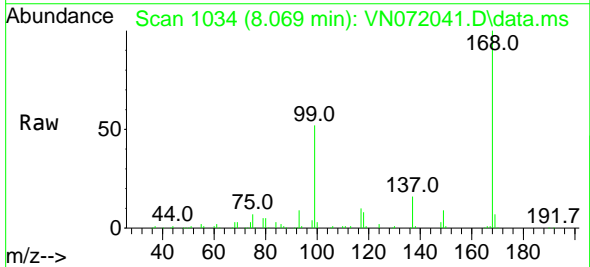


Tgt Ion: 113 Resp: 226027

Ion	Ratio	Lower	Upper
113	100		
111	103.2	81.4	122.0
192	21.9	17.0	25.6

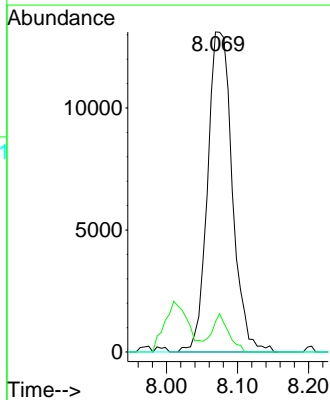
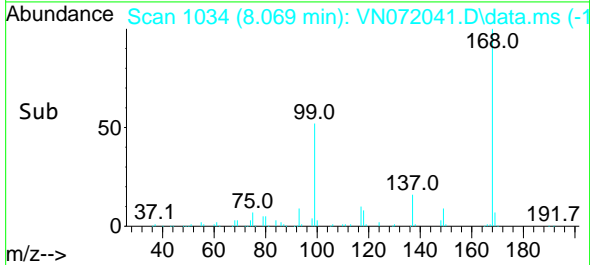


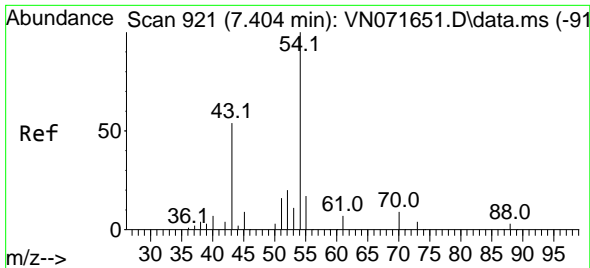
#36  
 1,1-Dichloropropene  
 Concen: 4.781 ug/l  
 RT: 8.069 min Scan# 1034  
 Delta R.T. -0.147 min  
 Lab File: VN072041.D  
 Acq: 19 Apr 2022 11:46



Tgt Ion: 75 Resp: 31704

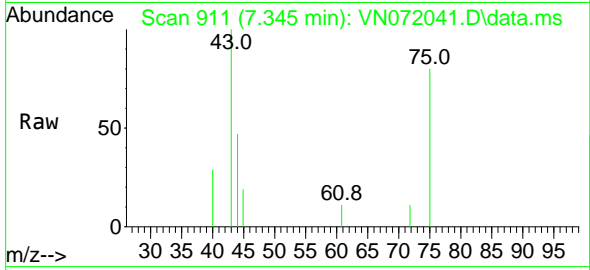
Ion	Ratio	Lower	Upper
75	100		
110	8.0	18.3	54.8#
77	0.0	25.1	37.7#





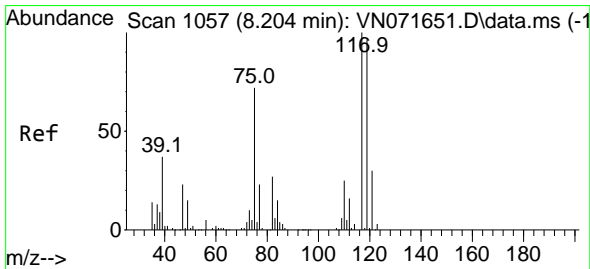
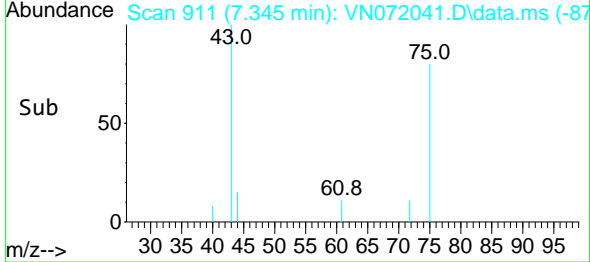
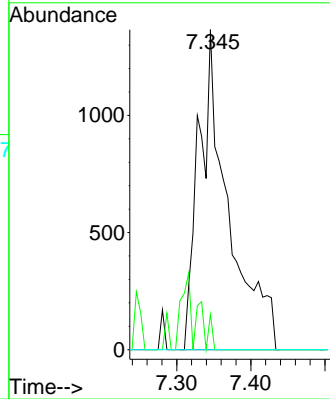
#37  
 Ethyl Acetate  
 Concen: 0.521 ug/l  
 RT: 7.345 min Scan# 911  
 Delta R.T. -0.059 min  
 Lab File: VN072041.D  
 Acq: 19 Apr 2022 11:46

Instrument :  
 MSVOA\_N  
 ClientSampleId :  
 VN0419MBL01



Tgt Ion: 43 Resp: 3779

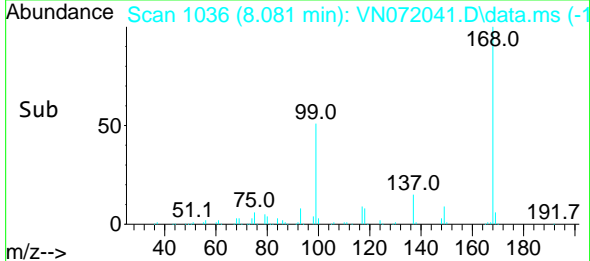
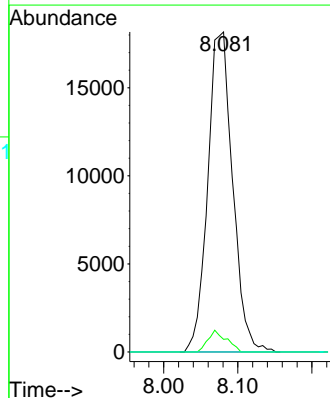
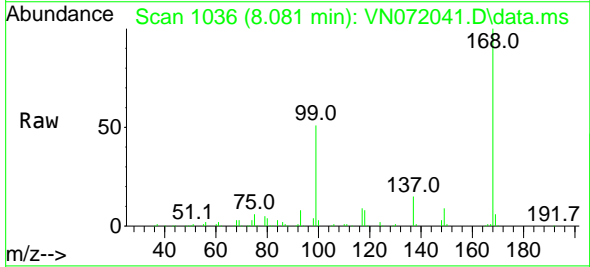
Ion	Ratio	Lower	Upper
43	100		
61	0.0	11.8	17.6#
70	0.0	9.3	13.9#

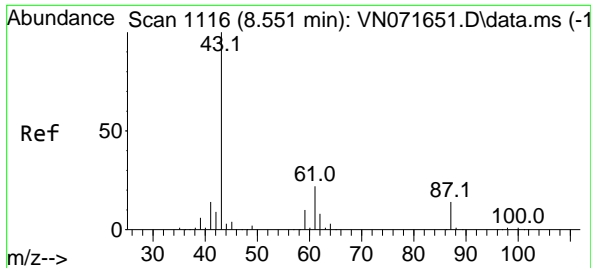


#38  
 Carbon Tetrachloride  
 Concen: 6.535 ug/l  
 RT: 8.081 min Scan# 1036  
 Delta R.T. -0.123 min  
 Lab File: VN072041.D  
 Acq: 19 Apr 2022 11:46

Tgt Ion: 117 Resp: 42476

Ion	Ratio	Lower	Upper
117	100		
119	3.9	75.8	113.8#
121	0.0	24.6	37.0#





#43  
 Isopropyl Acetate  
 Concen: 2.988 ug/l  
 RT: 8.645 min Scan# 1116  
 Delta R.T. 0.094 min  
 Lab File: VN072041.D  
 Acq: 19 Apr 2022 11:46

Instrument :

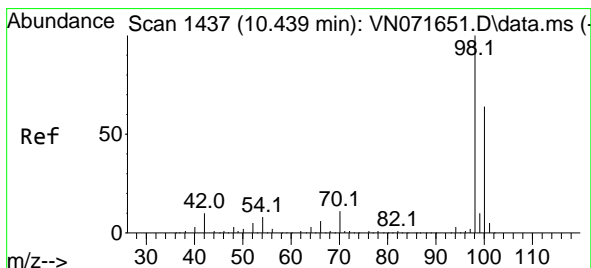
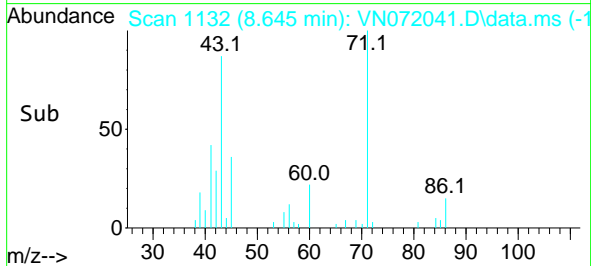
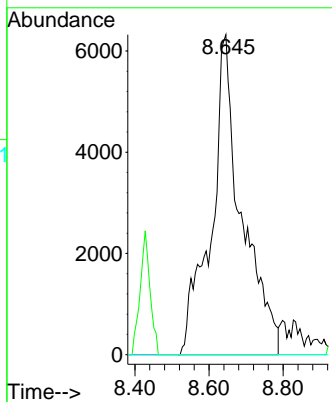
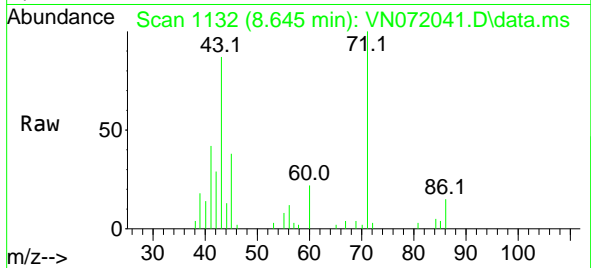
MSVOA\_N

ClientSampleId :

VN0419MBL01

Tgt Ion: 43 Resp: 36070

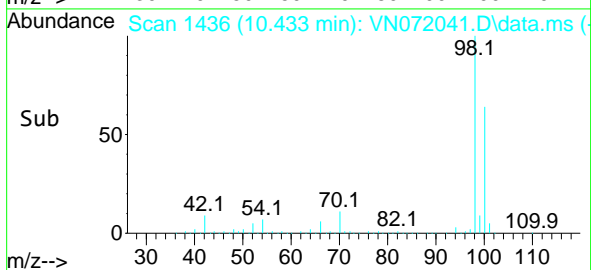
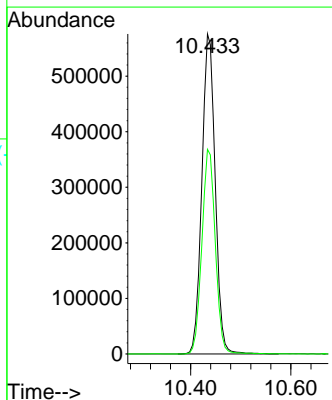
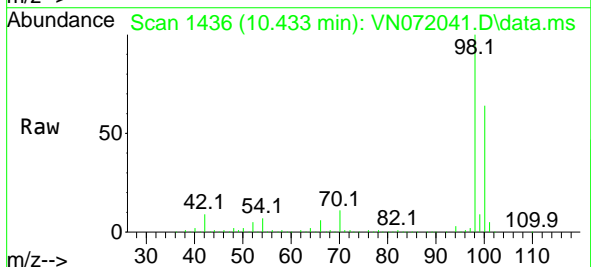
Ion	Ratio	Lower	Upper
43	100		
61	0.0	21.9	32.9#
87	0.0	12.0	18.0#

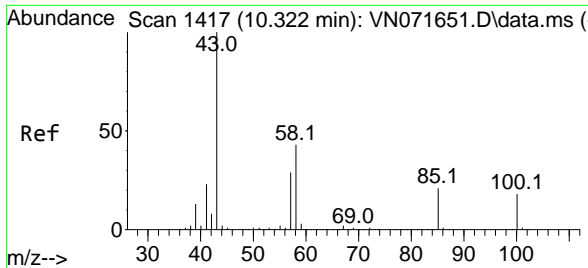


#50  
 Toluene-d8  
 Concen: 54.708 ug/l  
 RT: 10.433 min Scan# 1436  
 Delta R.T. -0.006 min  
 Lab File: VN072041.D  
 Acq: 19 Apr 2022 11:46

Tgt Ion: 98 Resp: 1062822

Ion	Ratio	Lower	Upper
98	100		
100	64.5	52.6	78.8

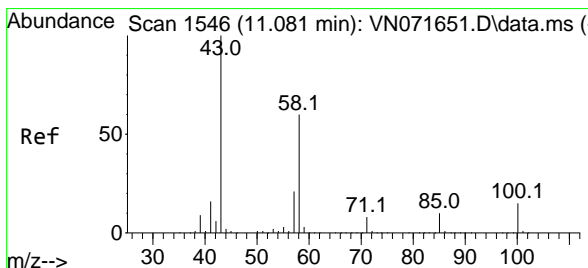
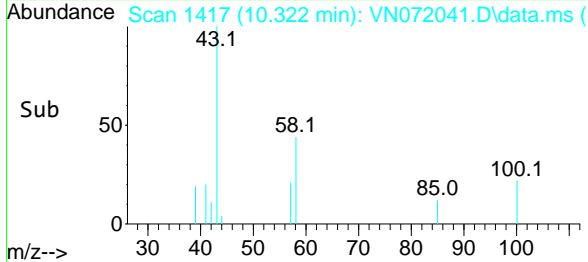
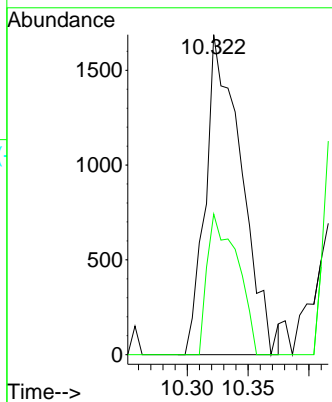
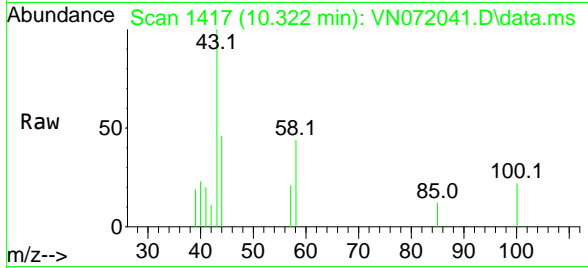




#51  
 4-Methyl-2-Pentanone  
 Concen: 0.500 ug/l  
 RT: 10.322 min Scan# 1417  
 Delta R.T. -0.000 min  
 Lab File: VN072041.D  
 Acq: 19 Apr 2022 11:46

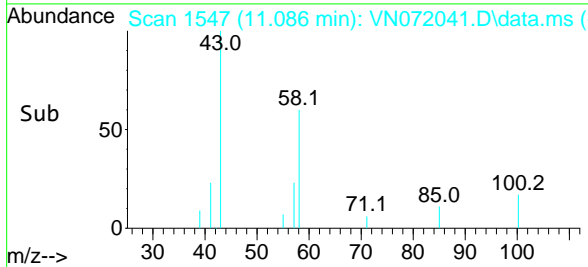
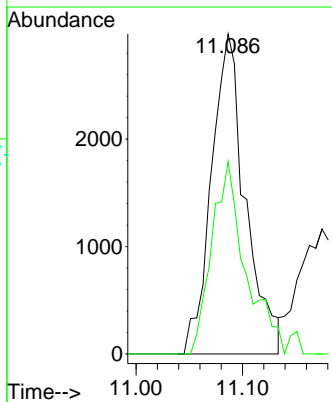
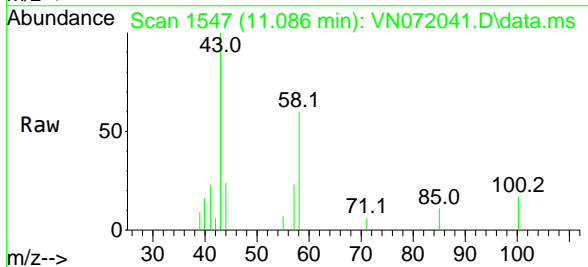
**Instrument :** MSVOA\_N  
**ClientSampleId :** VN0419MBL01

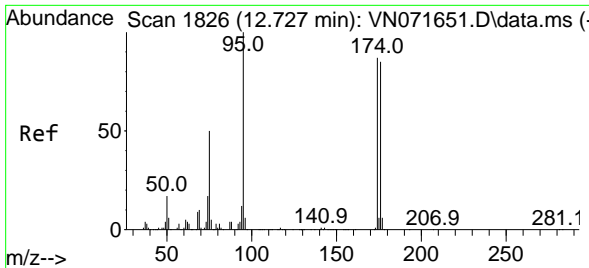
Tgt Ion: 43 Resp: 3469  
 Ion Ratio Lower Upper  
 43 100  
 58 36.8 34.1 51.1



#59  
 2-Hexanone  
 Concen: 1.354 ug/l  
 RT: 11.086 min Scan# 1547  
 Delta R.T. 0.005 min  
 Lab File: VN072041.D  
 Acq: 19 Apr 2022 11:46

Tgt Ion: 43 Resp: 6615  
 Ion Ratio Lower Upper  
 43 100  
 58 59.3 29.7 89.1



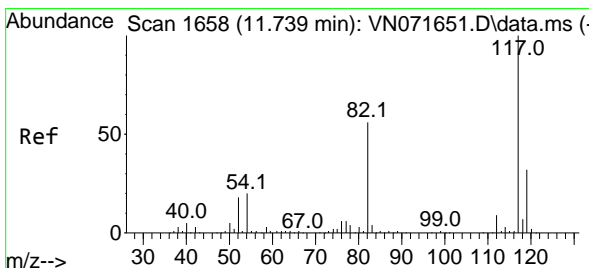
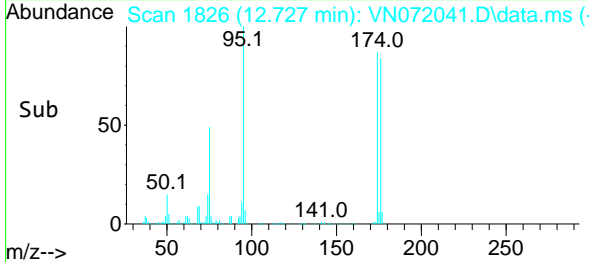
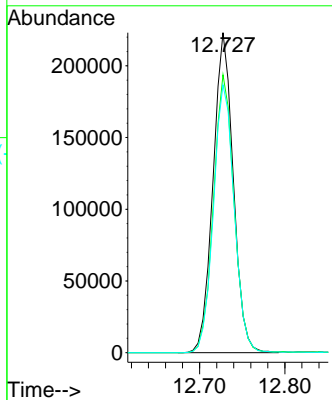
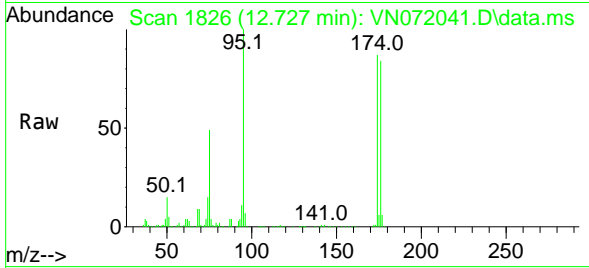


#62  
 4-Bromofluorobenzene  
 Concen: 58.565 ug/l  
 RT: 12.727 min Scan# 1826  
 Delta R.T. 0.000 min  
 Lab File: VN072041.D  
 Acq: 19 Apr 2022 11:46

Instrument : MSVOA\_N  
 ClientSampleId : VN0419MBL01

Tgt Ion: 95 Resp: 367962

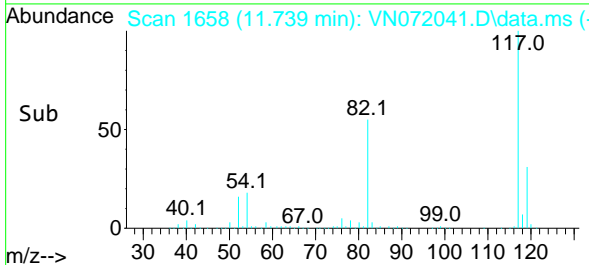
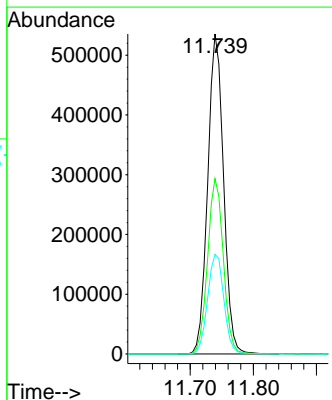
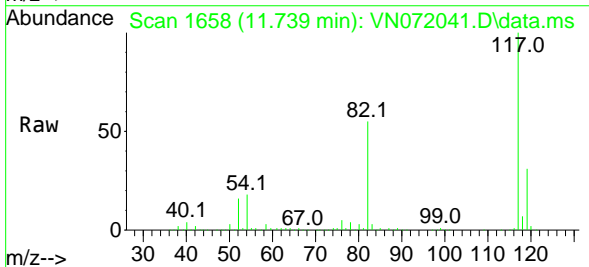
Ion	Ratio	Lower	Upper
95	100		
174	88.1	0.0	167.6
176	85.7	0.0	163.4

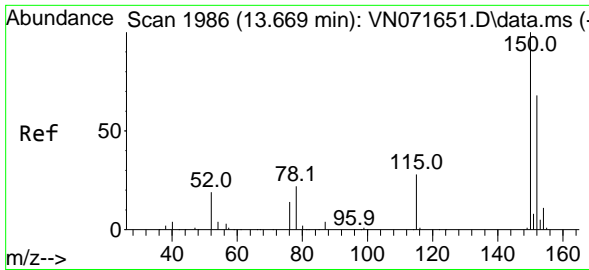


#63  
 Chlorobenzene-d5  
 Concen: 50.000 ug/l  
 RT: 11.739 min Scan# 1658  
 Delta R.T. 0.000 min  
 Lab File: VN072041.D  
 Acq: 19 Apr 2022 11:46

Tgt Ion: 117 Resp: 931607

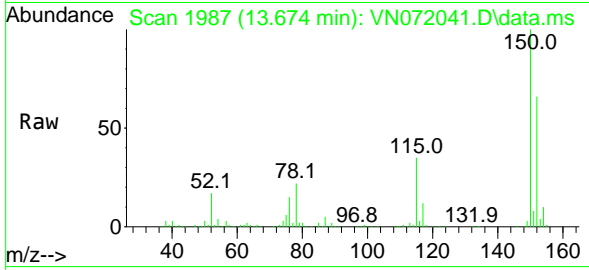
Ion	Ratio	Lower	Upper
117	100		
82	54.8	44.2	66.2
119	31.1	25.4	38.0



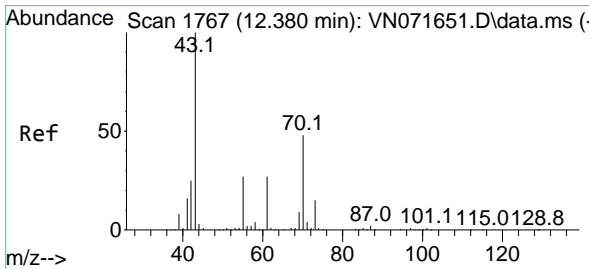
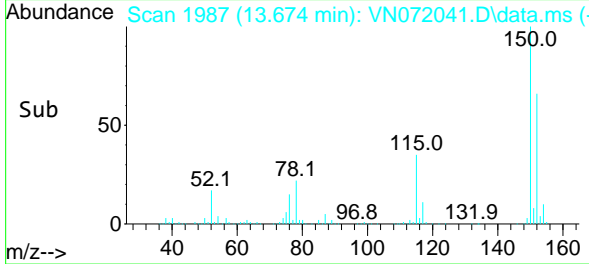
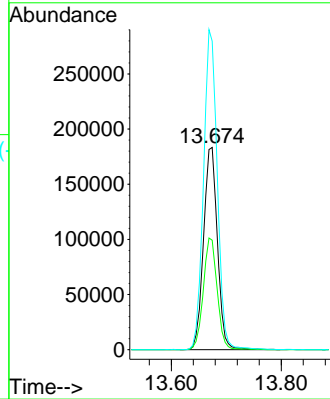


#72  
 1,4-Dichlorobenzene-d4  
 Concen: 50.000 ug/l  
 RT: 13.674 min Scan# 1986  
 Delta R.T. 0.005 min  
 Lab File: VN072041.D  
 Acq: 19 Apr 2022 11:46

Instrument : MSVOA\_N  
 ClientSampleId : VN0419MBL01

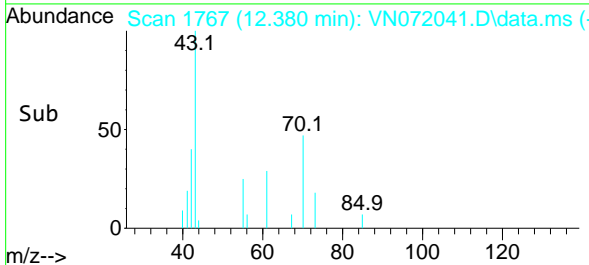
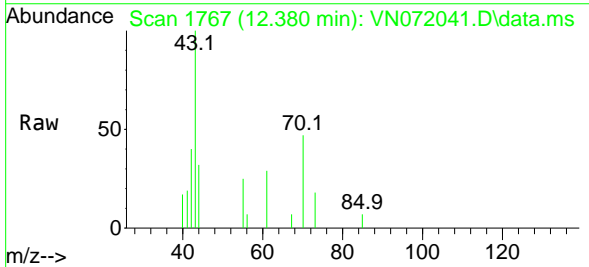
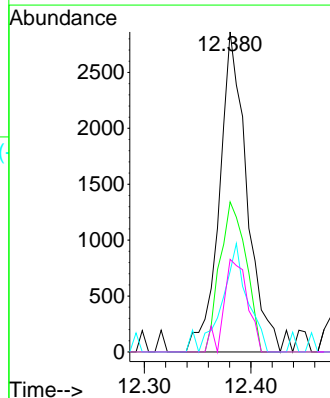


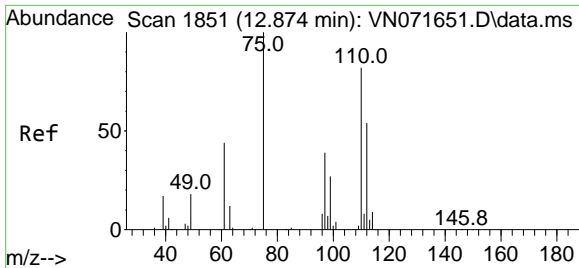
Tgt Ion:152 Resp: 321880  
 Ion Ratio Lower Upper  
 152 100  
 115 55.2 28.9 86.7  
 150 156.6 0.0 356.2



#74  
 N-amy1 acetate  
 Concen: 0.658 ug/l  
 RT: 12.380 min Scan# 1767  
 Delta R.T. 0.000 min  
 Lab File: VN072041.D  
 Acq: 19 Apr 2022 11:46

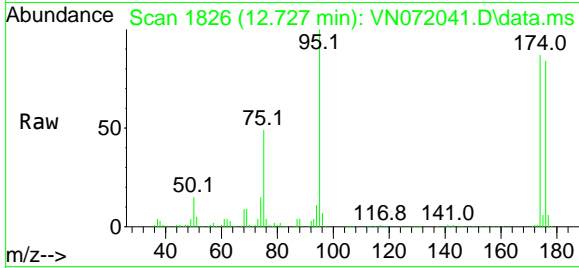
Tgt Ion: 43 Resp: 5117  
 Ion Ratio Lower Upper  
 43 100  
 70 45.1 39.0 58.4  
 55 30.3 21.1 31.7  
 61 25.0 21.1 31.7



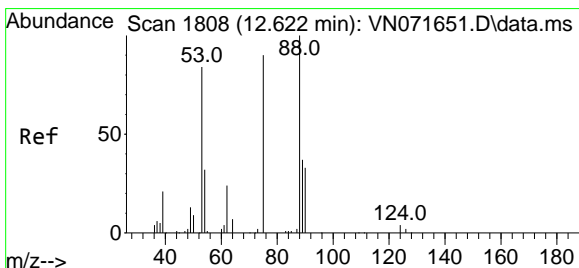
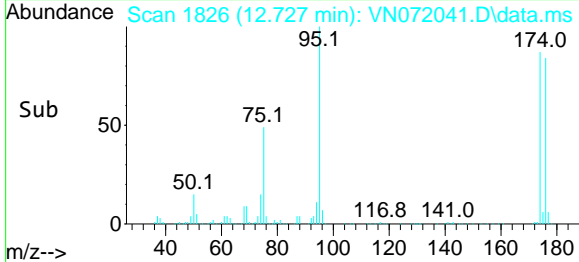
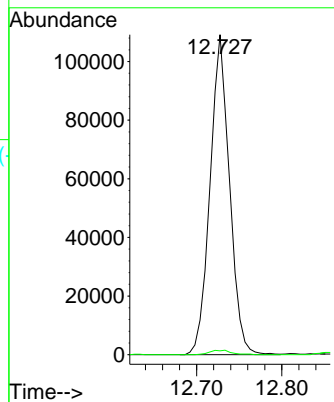


#76  
 1,2,3-Trichloropropane  
 Concen: 23.204 ug/l  
 RT: 12.727 min Scan# 1826  
 Delta R.T. -0.147 min  
 Lab File: VN072041.D  
 Acq: 19 Apr 2022 11:46

Instrument : MSVOA\_N  
 ClientSampleId : VN0419MBL01

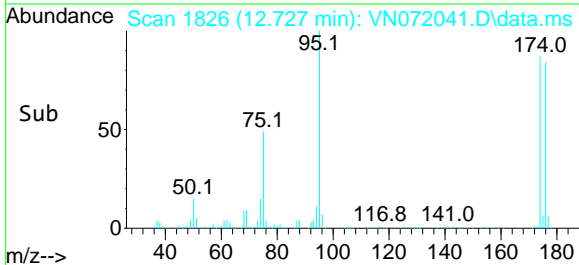
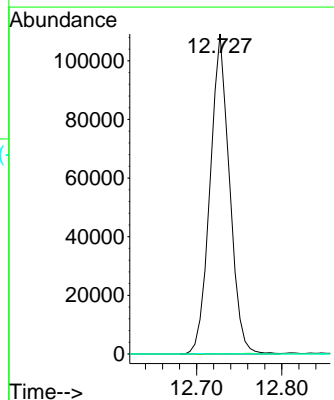
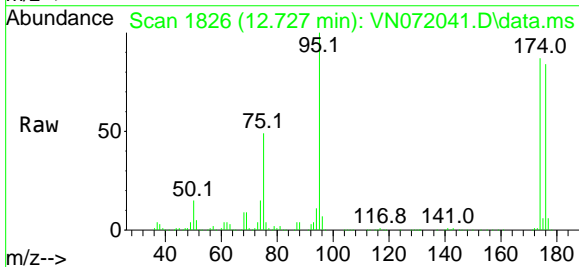


Tgt Ion: 75 Resp: 173021  
 Ion Ratio Lower Upper  
 75 100  
 77 1.6 98.5 295.5#

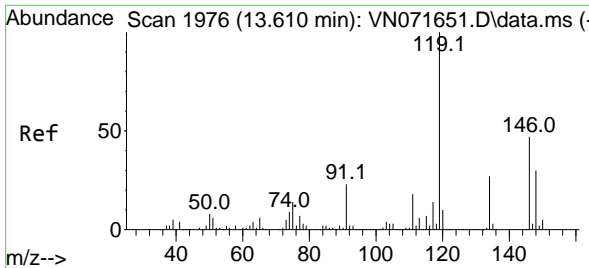


#81  
 trans-1,4-Dichloro-2-butene  
 Concen: 71.908 ug/l  
 RT: 12.727 min Scan# 1826  
 Delta R.T. 0.105 min  
 Lab File: VN072041.D  
 Acq: 19 Apr 2022 11:46

Tgt Ion: 75 Resp: 173021  
 Ion Ratio Lower Upper  
 75 100  
 53 0.0 78.0 117.0#  
 89 0.0 37.2 55.8#





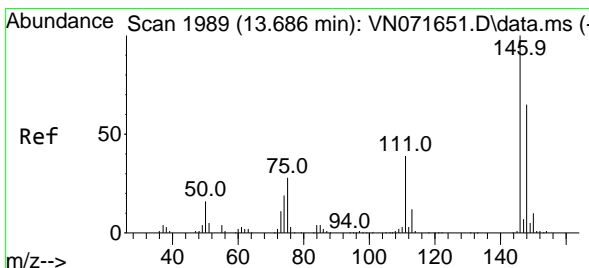
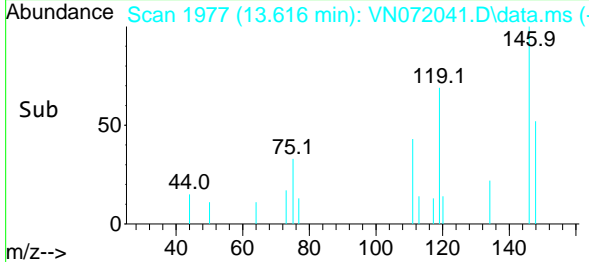
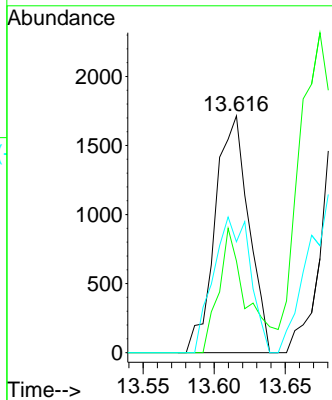
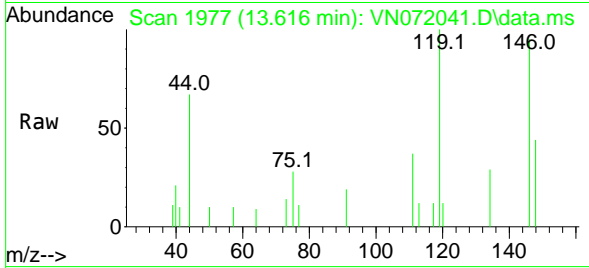


#87  
 1,3-Dichlorobenzene  
 Concen: 0.260 ug/l  
 RT: 13.616 min Scan# 1976  
 Delta R.T. 0.006 min  
 Lab File: VN072041.D  
 Acq: 19 Apr 2022 11:46

Instrument : MSVOA\_N  
 ClientSampleId : VN0419MBL01

Tgt Ion:146 Resp: 2821

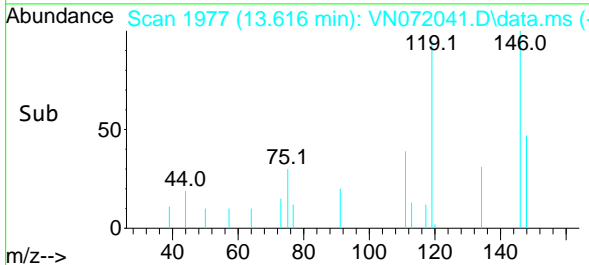
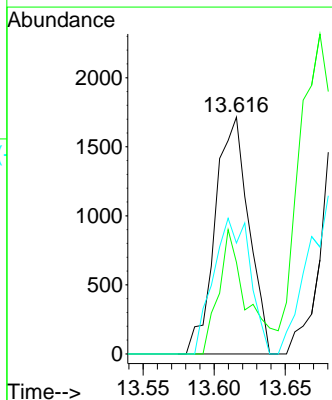
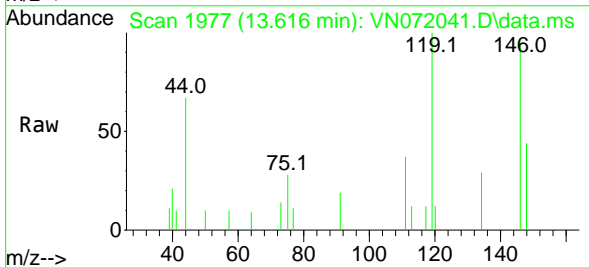
Ion	Ratio	Lower	Upper
146	100		
111	44.8	20.0	60.0
148	62.7	32.0	96.0

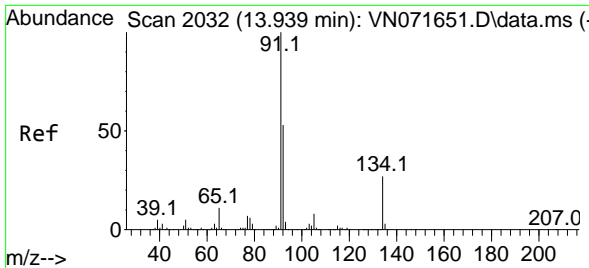


#88  
 1,4-Dichlorobenzene  
 Concen: 0.267 ug/l  
 RT: 13.616 min Scan# 1977  
 Delta R.T. -0.070 min  
 Lab File: VN072041.D  
 Acq: 19 Apr 2022 11:46

Tgt Ion:146 Resp: 2821

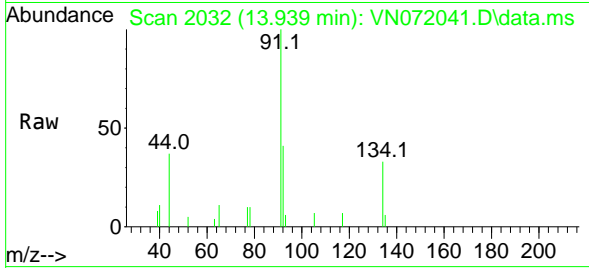
Ion	Ratio	Lower	Upper
146	100		
111	44.8	19.1	57.1
148	62.7	31.4	94.3



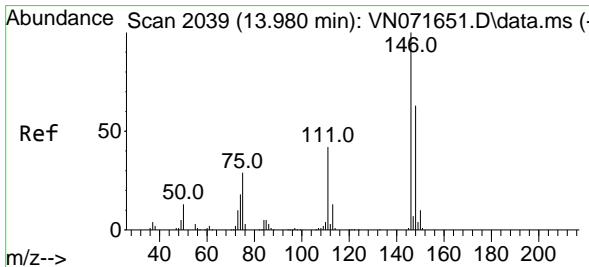
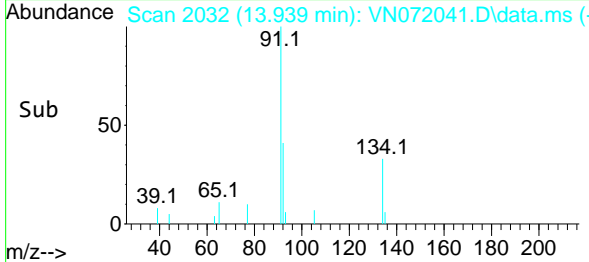
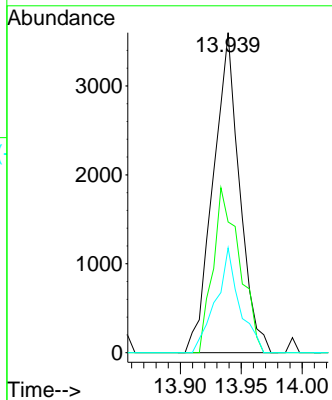


#89  
 n-Butylbenzene  
 Concen: 0.361 ug/l  
 RT: 13.939 min Scan# 2032  
 Delta R.T. 0.000 min  
 Lab File: VN072041.D  
 Acq: 19 Apr 2022 11:46

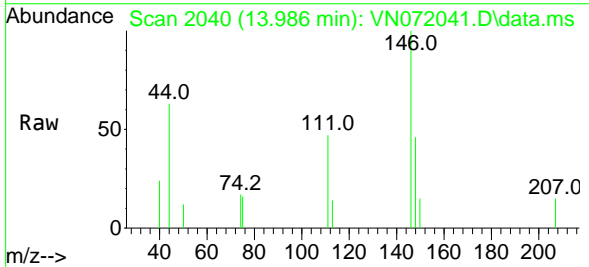
Instrument :  
 MSVOA\_N  
 ClientSampleId :  
 VN0419MBL01



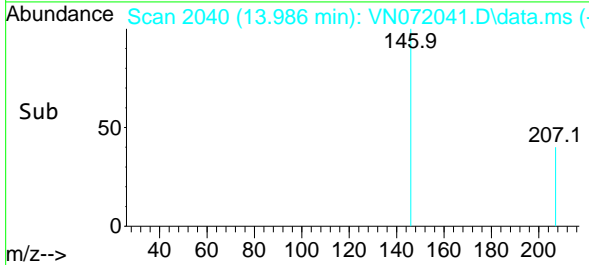
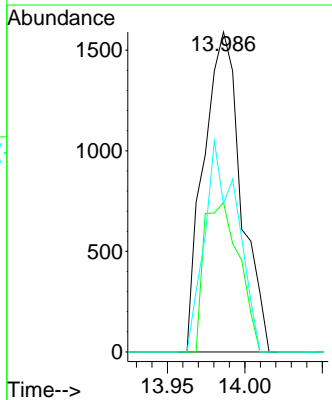
Tgt Ion: 91 Resp: 5441  
 Ion Ratio Lower Upper  
 91 100  
 92 51.7 26.9 80.7  
 134 29.2 13.6 40.8

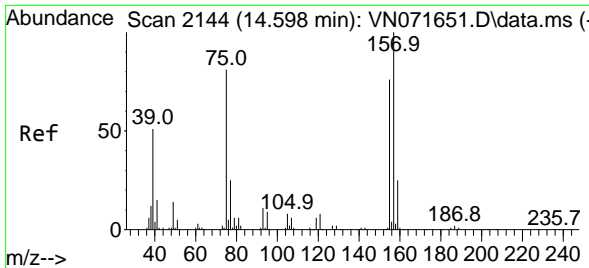


#91  
 1,2-Dichlorobenzene  
 Concen: 0.251 ug/l  
 RT: 13.986 min Scan# 2040  
 Delta R.T. 0.006 min  
 Lab File: VN072041.D  
 Acq: 19 Apr 2022 11:46



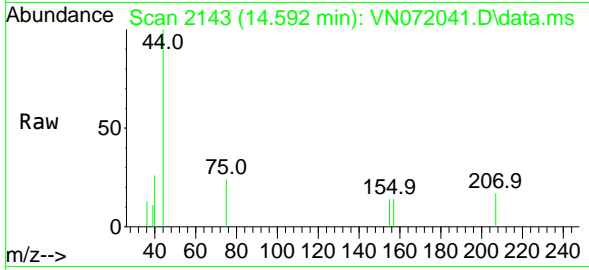
Tgt Ion:146 Resp: 2669  
 Ion Ratio Lower Upper  
 146 100  
 111 43.8 20.9 62.8  
 148 57.4 32.1 96.3





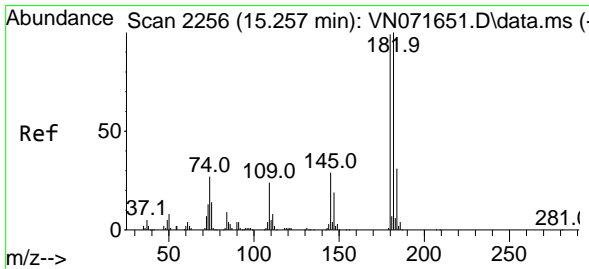
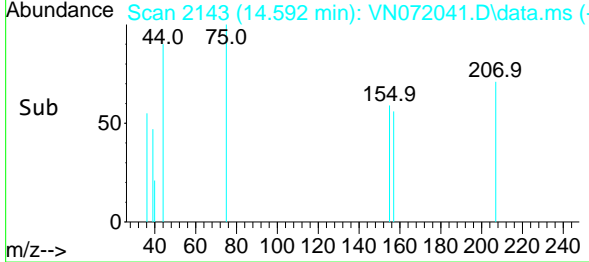
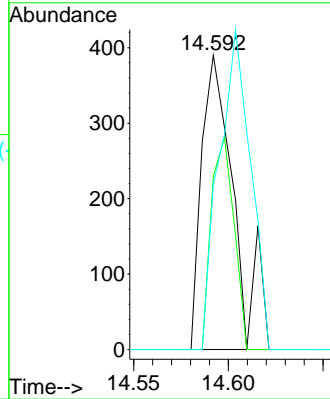
#92  
 1,2-Dibromo-3-Chloropropane  
 Concen: 0.333 ug/l  
 RT: 14.592 min Scan# 2143  
 Delta R.T. -0.006 min  
 Lab File: VN072041.D  
 Acq: 19 Apr 2022 11:46

Instrument : MSVOA\_N  
 ClientSampleId : VN0419MBL01



Tgt Ion: 75 Resp: 467

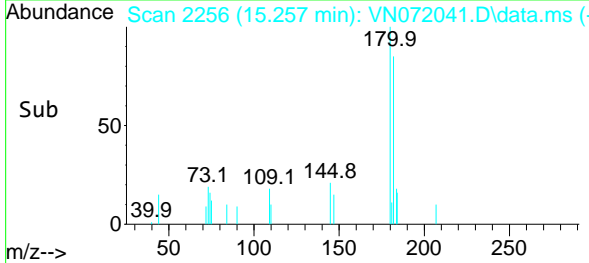
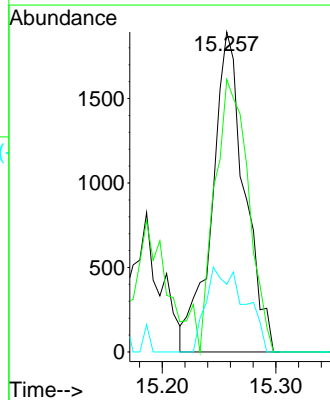
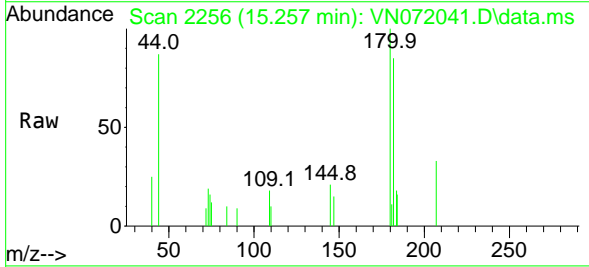
Ion	Ratio	Lower	Upper
75	100		
155	50.1	44.9	134.5
157	104.7	59.0	176.8

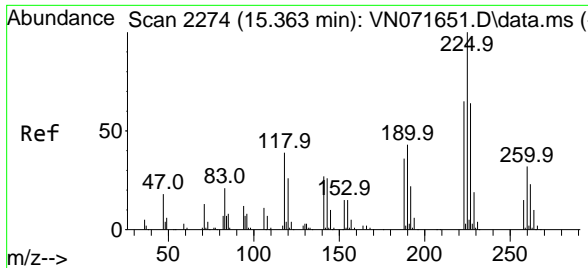


#93  
 1,2,4-Trichlorobenzene  
 Concen: 2.790 ug/l  
 RT: 15.257 min Scan# 2256  
 Delta R.T. -0.000 min  
 Lab File: VN072041.D  
 Acq: 19 Apr 2022 11:46

Tgt Ion: 180 Resp: 3762

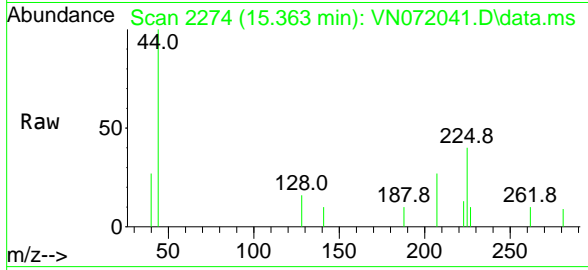
Ion	Ratio	Lower	Upper
180	100		
182	87.7	47.5	142.5
145	31.3	14.5	43.5



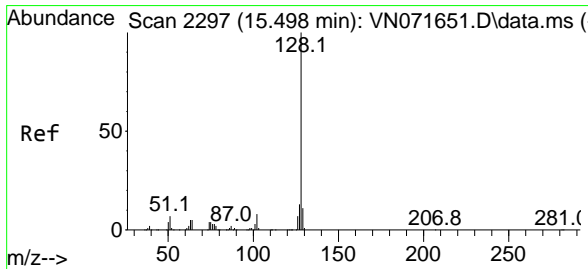
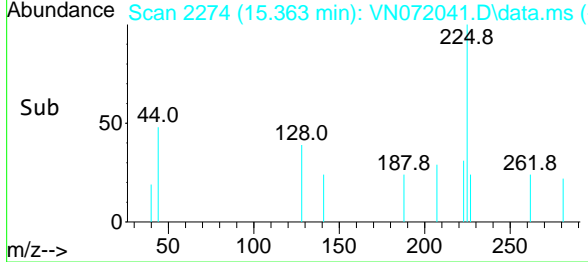
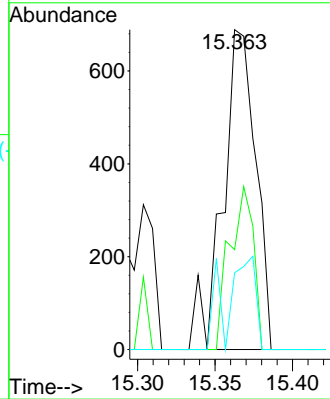


#94  
 Hexachlorobutadiene  
 Concen: 0.324 ug/l  
 RT: 15.363 min Scan# 211  
 Delta R.T. -0.000 min  
 Lab File: VN072041.D  
 Acq: 19 Apr 2022 11:46

Instrument :  
 MSVOA\_N  
 ClientSampleId :  
 VN0419MBL01

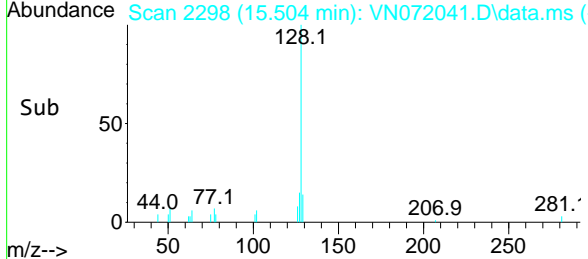
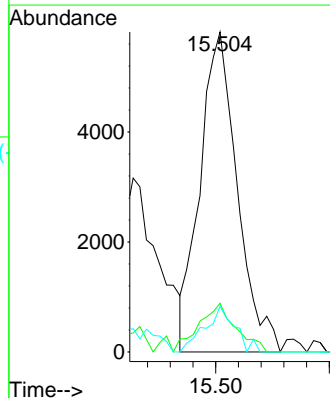
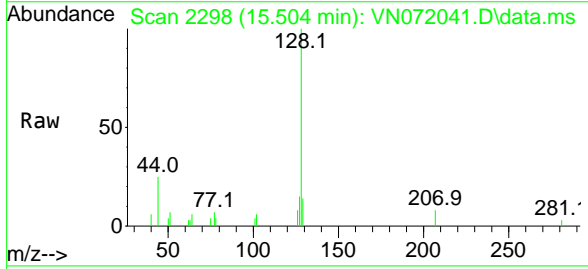


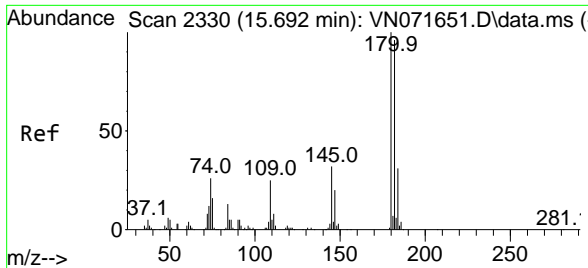
Tgt Ion:225 Resp: 1017  
 Ion Ratio Lower Upper  
 225 100  
 223 37.0 32.4 97.2  
 227 18.9 31.8 95.4#



#95  
 Naphthalene  
 Concen: 4.637 ug/l  
 RT: 15.504 min Scan# 2298  
 Delta R.T. 0.006 min  
 Lab File: VN072041.D  
 Acq: 19 Apr 2022 11:46

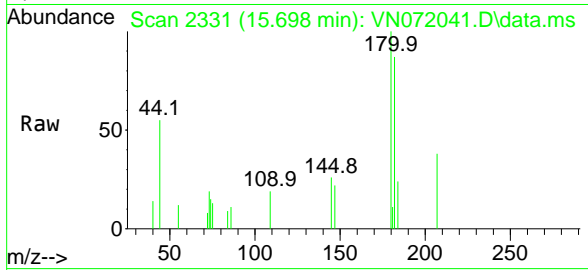
Tgt Ion:128 Resp: 13236  
 Ion Ratio Lower Upper  
 128 100  
 127 15.2 10.3 15.5  
 129 11.6 8.6 13.0





#96  
 1,2,3-Trichlorobenzene  
 Concen: 3.196 ug/l  
 RT: 15.698 min Scan# 21  
 Delta R.T. 0.006 min  
 Lab File: VN072041.D  
 Acq: 19 Apr 2022 11:46

Instrument :  
 MSVOA\_N  
 ClientSampleId :  
 VN0419MBL01



Tgt Ion:180 Resp: 4076

Ion	Ratio	Lower	Upper
180	100		
182	100.0	47.8	143.3
145	24.8	15.5	46.5

