

Data Path : Z:\voasrv\HPCHEM1\MSVOA\_N\Data\VN042122\  
 Data File : VN072127.D  
 Acq On : 21 Apr 2022 15:57  
 Operator : JC\MD  
 Sample : N2482-19  
 Misc : 5.0mL/MSVOA\_N/WATER  
 ALS Vial : 11 Sample Multiplier: 1

Instrument :  
 MSVOA\_N  
 ClientSampleId :  
 EB-2022-04-19

Quant Time: Apr 22 01:24:24 2022  
 Quant Method : Z:\voasrv\HPCHEM1\MSVOA\_N\methods\82N033022W.M  
 Quant Title : SW846 8260  
 QLast Update : Thu Mar 31 01:57:54 2022  
 Response via : Initial Calibration

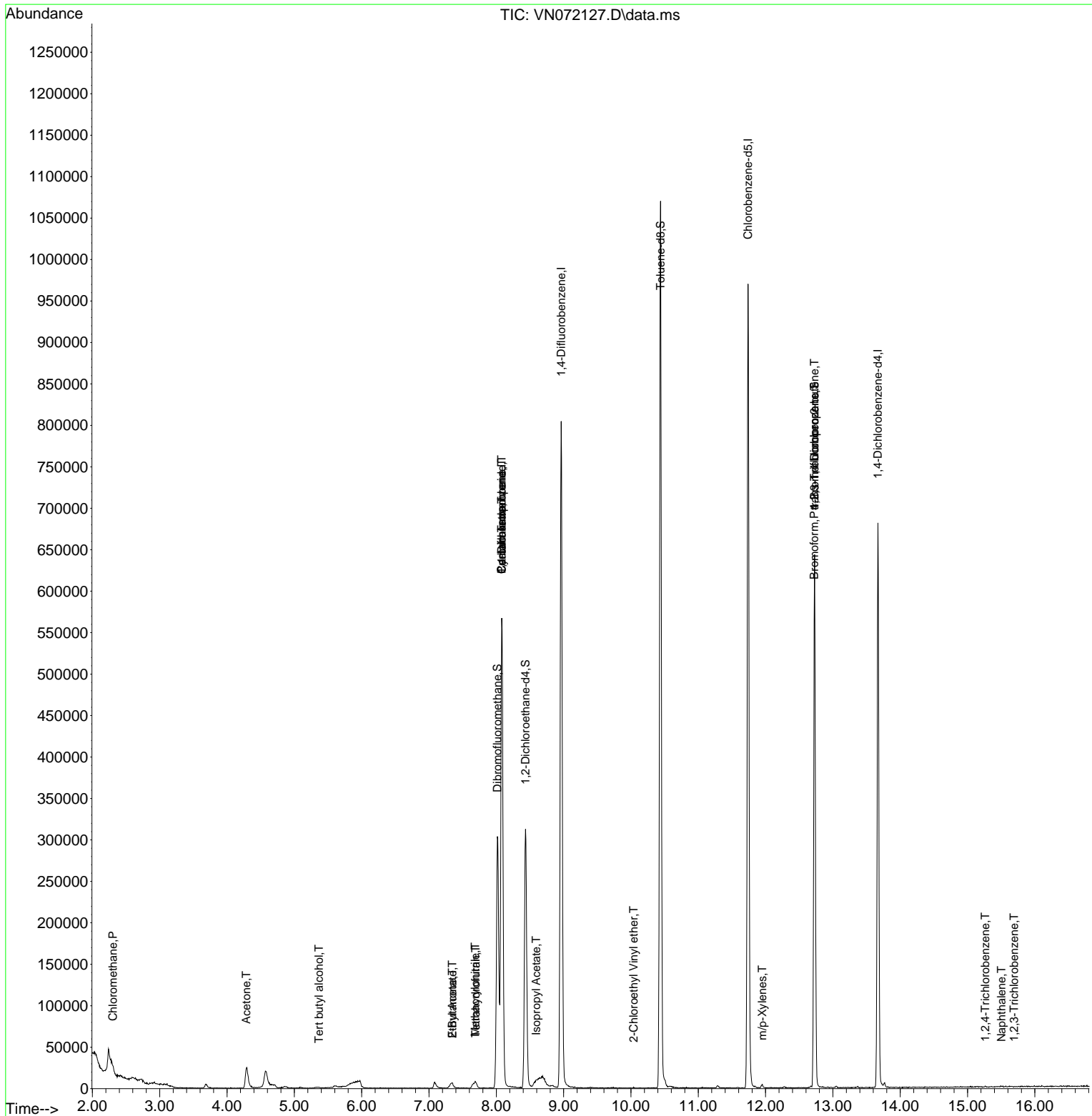
Compound	R.T.	QIon	Response	Conc	Units	Dev(Min)
-----						
Internal Standards						
1) Pentafluorobenzene	8.081	168	477690	50.000	ug/l	0.00
34) 1,4-Difluorobenzene	8.963	114	764257	50.000	ug/l	0.00
63) Chlorobenzene-d5	11.739	117	622062	50.000	ug/l	0.00
72) 1,4-Dichlorobenzene-d4	13.669	152	203618	50.000	ug/l	0.00
System Monitoring Compounds						
33) 1,2-Dichloroethane-d4	8.434	65	262678	48.168	ug/l	0.00
Spiked Amount	50.000	Range 61 - 141	Recovery	=	96.340%	
35) Dibromofluoromethane	8.016	113	227288	50.540	ug/l	0.00
Spiked Amount	50.000	Range 69 - 133	Recovery	=	101.080%	
50) Toluene-d8	10.439	98	787143	42.786	ug/l	0.00
Spiked Amount	50.000	Range 65 - 126	Recovery	=	85.580%	
62) 4-Bromofluorobenzene	12.727	95	227671	38.265	ug/l	0.00
Spiked Amount	50.000	Range 58 - 135	Recovery	=	76.520%	
Target Compounds						
						Qvalue
3) Chloromethane	2.305	50	1647	0.342	ug/l	94
11) Tert butyl alcohol	5.363	59	1331	1.504	ug/l #	72
16) Acetone	4.287	43	43893	18.833	ug/l	95
18) Methyl Acetate	4.863	43	2385	Below Cal	#	78
25) 2-Butanone	7.345	43	11691	3.480	ug/l	97
29) Tetrahydrofuran	7.692	42	5217	2.398	ug/l	92
31) Cyclohexane	8.081	56	7706	1.039	ug/l #	1
36) 1,1-Dichloropropene	8.081	75	31891	5.078	ug/l #	49
37) Ethyl Acetate	7.345	43	11691	1.701	ug/l #	67
38) Carbon Tetrachloride	8.081	117	42954	6.979	ug/l #	16
41) Methacrylonitrile	7.687	41	4034	1.199	ug/l #	26
43) Isopropyl Acetate	8.592	43	7519	0.658	ug/l #	53
58) 2-Chloroethyl Vinyl ether	10.039	63	60	16.991	ug/l #	44
68) m/p-Xylenes	11.951	106	1650	0.204	ug/l	98
71) Bromoform	12.722	173	1082	0.316	ug/l #	28
76) 1,2,3-Trichloropropane	12.727	75	108468	22.995	ug/l #	1
81) trans-1,4-Dichloro-2-b...	12.727	75	108468	71.262	ug/l #	10
93) 1,2,4-Trichlorobenzene	15.263	180	76	2.108	ug/l #	28
95) Naphthalene	15.504	128	1092	3.912	ug/l #	69
96) 1,2,3-Trichlorobenzene	15.692	180	85	2.440	ug/l #	78

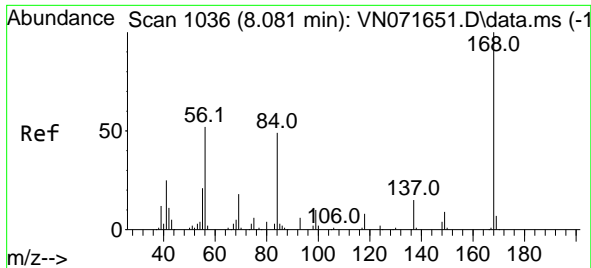
(#) = qualifier out of range (m) = manual integration (+) = signals summed

Data Path : Z:\voasrv\HPCHEM1\MSVOA\_N\Data\VN042122\  
 Data File : VN072127.D  
 Acq On : 21 Apr 2022 15:57  
 Operator : JC\MD  
 Sample : N2482-19  
 Misc : 5.0mL/MSVOA\_N/WATER  
 ALS Vial : 11 Sample Multiplier: 1

Instrument :  
 MSVOA\_N  
 ClientSampleId :  
 EB-2022-04-19

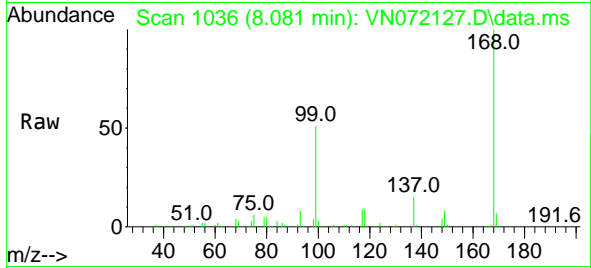
Quant Time: Apr 22 01:24:24 2022  
 Quant Method : Z:\voasrv\HPCHEM1\MSVOA\_N\methods\82N033022W.M  
 Quant Title : SW846 8260  
 QLast Update : Thu Mar 31 01:57:54 2022  
 Response via : Initial Calibration



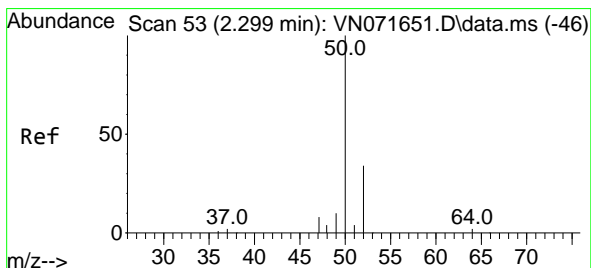
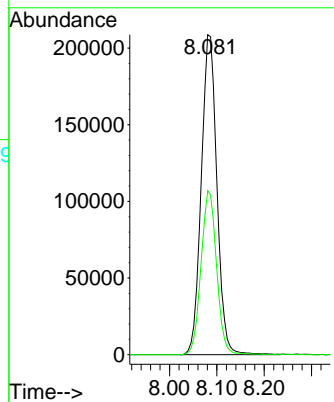
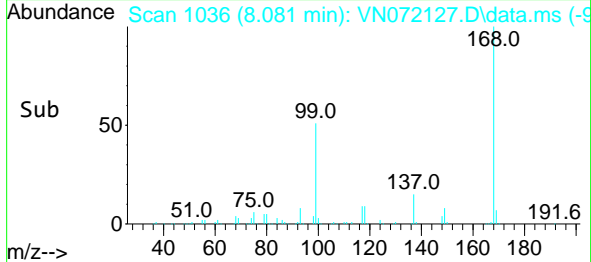


#1  
 Pentafluorobenzene  
 Concen: 50.000 ug/l  
 RT: 8.081 min Scan# 10  
 Delta R.T. -0.000 min  
 Lab File: VN072127.D  
 Acq: 21 Apr 2022 15:57

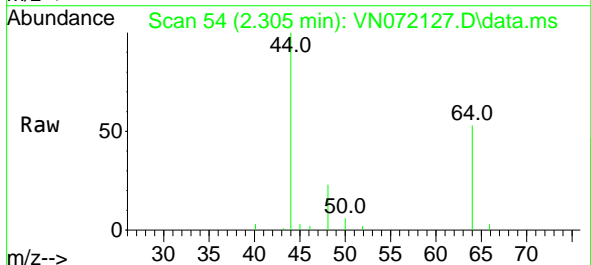
Instrument :  
 MSVOA\_N  
 ClientSampleId :  
 EB-2022-04-19



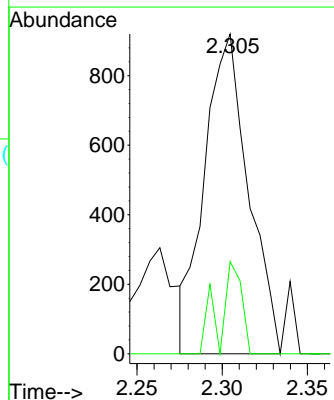
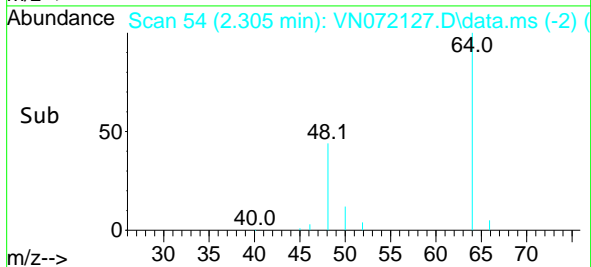
Tgt Ion:168 Resp: 477690  
 Ion Ratio Lower Upper  
 168 100  
 99 51.3 42.3 63.5

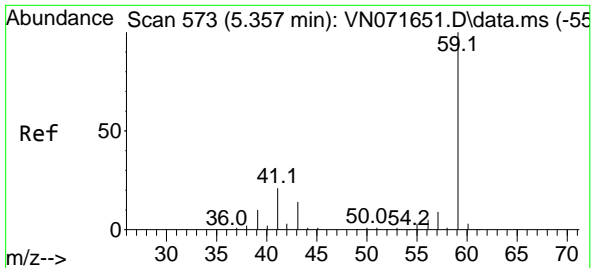


#3  
 Chloromethane  
 Concen: 0.342 ug/l  
 RT: 2.305 min Scan# 54  
 Delta R.T. 0.006 min  
 Lab File: VN072127.D  
 Acq: 21 Apr 2022 15:57



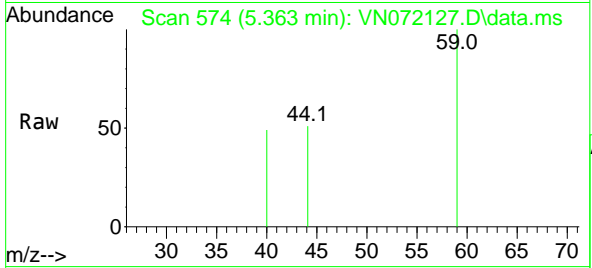
Tgt Ion: 50 Resp: 1647  
 Ion Ratio Lower Upper  
 50 100  
 52 28.8 25.7 38.5



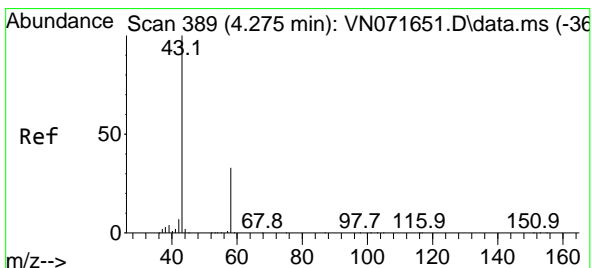
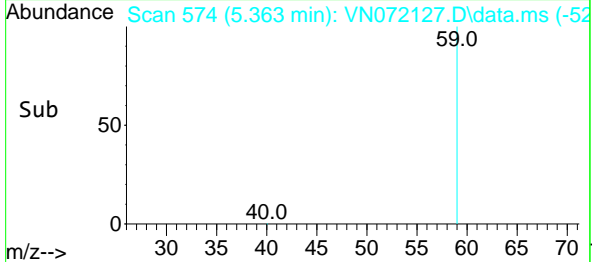
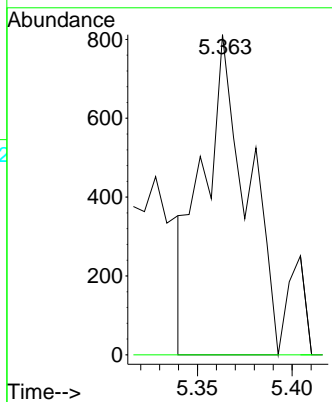


#11  
 Tert butyl alcohol  
 Concen: 1.504 ug/l  
 RT: 5.363 min Scan# 51  
 Delta R.T. 0.006 min  
 Lab File: VN072127.D  
 Acq: 21 Apr 2022 15:57

Instrument :  
 MSVOA\_N  
 ClientSampleId :  
 EB-2022-04-19

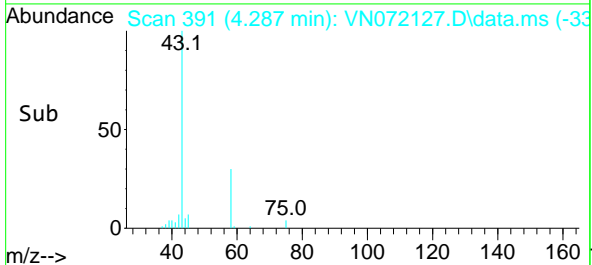
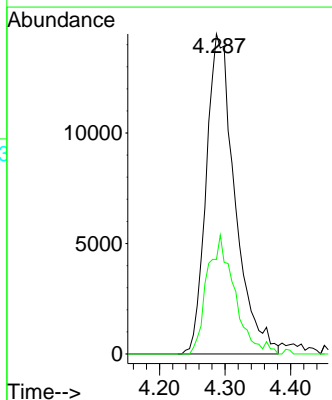
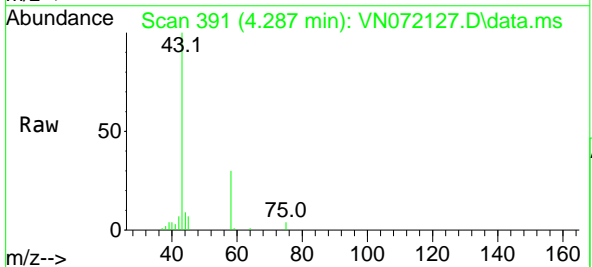


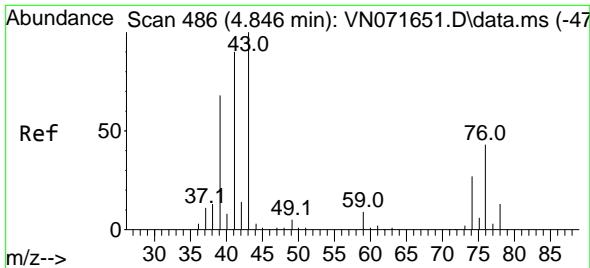
Tgt Ion: 59 Resp: 1331  
 Ion Ratio Lower Upper  
 59 100  
 57 0.0 8.3 12.5#



#16  
 Acetone  
 Concen: 18.833 ug/l  
 RT: 4.287 min Scan# 391  
 Delta R.T. 0.012 min  
 Lab File: VN072127.D  
 Acq: 21 Apr 2022 15:57

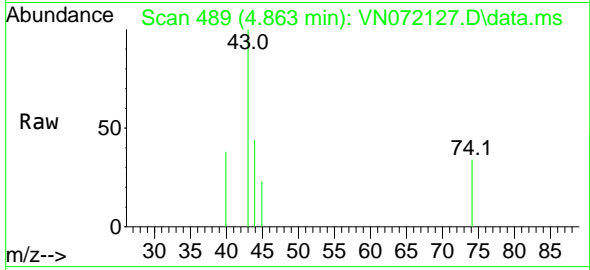
Tgt Ion: 43 Resp: 43893  
 Ion Ratio Lower Upper  
 43 100  
 58 29.6 26.0 39.0



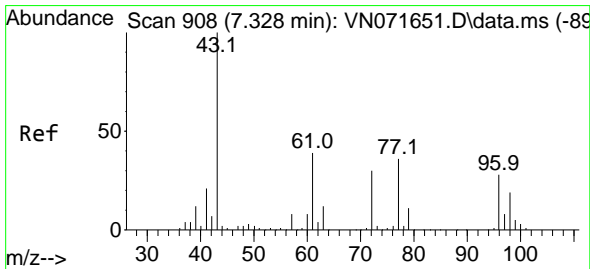
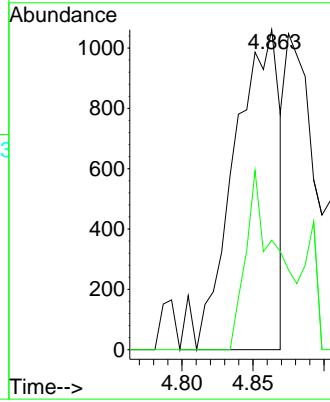
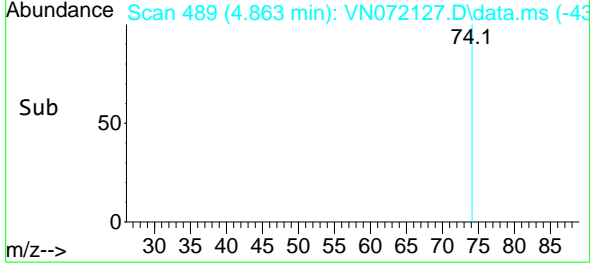


#18  
 Methyl Acetate  
 Concen: Below Cal  
 RT: 4.863 min Scan# 41  
 Delta R.T. 0.017 min  
 Lab File: VN072127.D  
 Acq: 21 Apr 2022 15:57

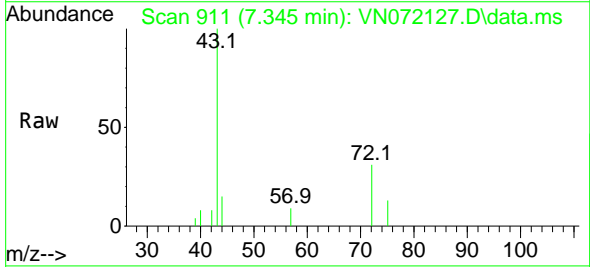
Instrument : MSVOA\_N  
 ClientSampleId : EB-2022-04-19



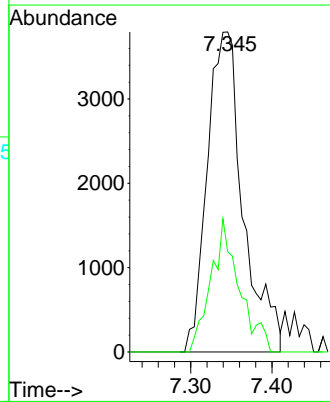
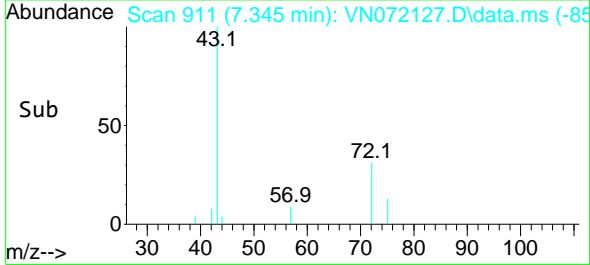
Tgt Ion: 43 Resp: 2385  
 Ion Ratio Lower Upper  
 43 100  
 74 38.4 21.6 32.4#

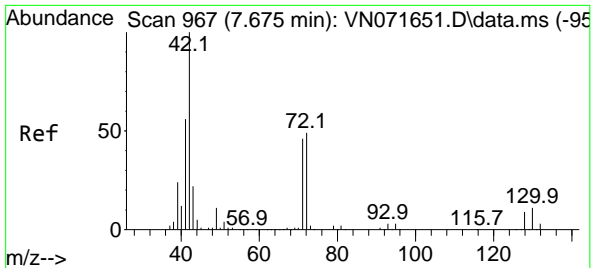


#25  
 2-Butanone  
 Concen: 3.480 ug/l  
 RT: 7.345 min Scan# 911  
 Delta R.T. 0.017 min  
 Lab File: VN072127.D  
 Acq: 21 Apr 2022 15:57



Tgt Ion: 43 Resp: 11691  
 Ion Ratio Lower Upper  
 43 100  
 72 31.3 23.7 35.5

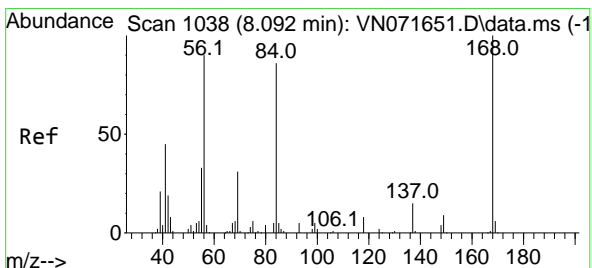
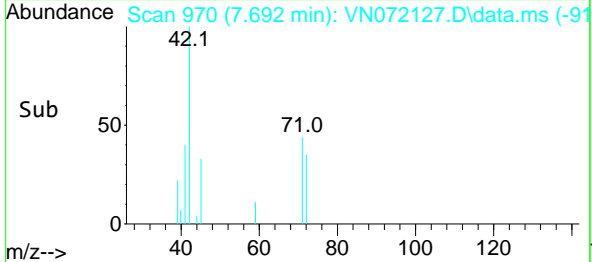
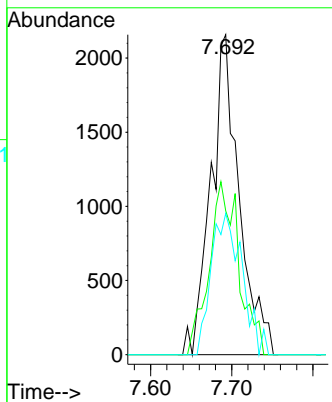
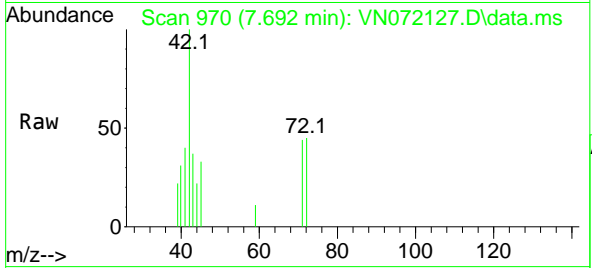




#29  
 Tetrahydrofuran  
 Concen: 2.398 ug/l  
 RT: 7.692 min Scan# 91  
 Delta R.T. 0.017 min  
 Lab File: VN072127.D  
 Acq: 21 Apr 2022 15:57

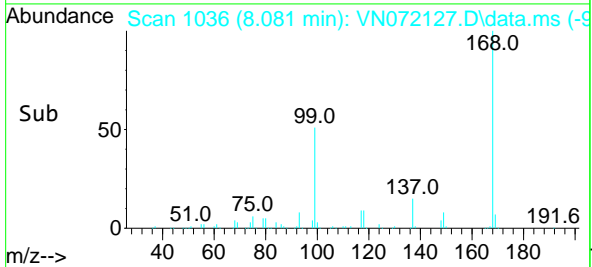
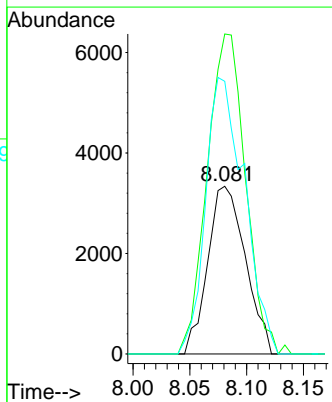
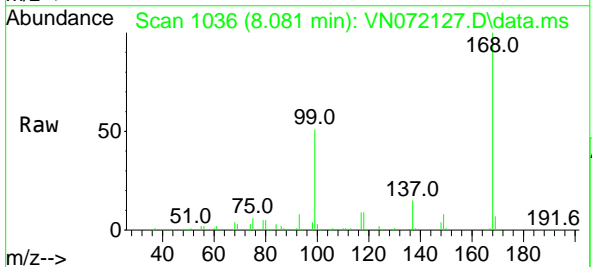
Instrument : MSVOA\_N  
 ClientSampleId : EB-2022-04-19

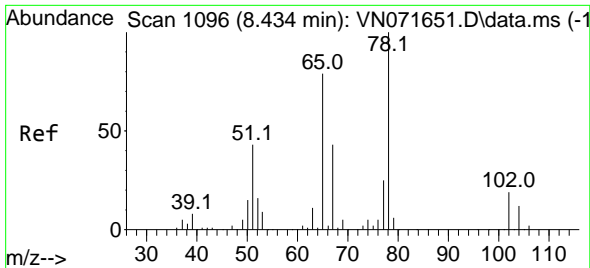
Tgt Ion	Resp	Lower	Upper
42	5217		
42	100		
72	57.1	39.7	59.5
71	48.3	36.6	55.0



#31  
 Cyclohexane  
 Concen: 1.039 ug/l  
 RT: 8.081 min Scan# 1036  
 Delta R.T. -0.011 min  
 Lab File: VN072127.D  
 Acq: 21 Apr 2022 15:57

Tgt Ion	Resp	Lower	Upper
56	7706		
56	100		
69	190.8	27.8	41.8#
84	162.5	76.9	115.3#

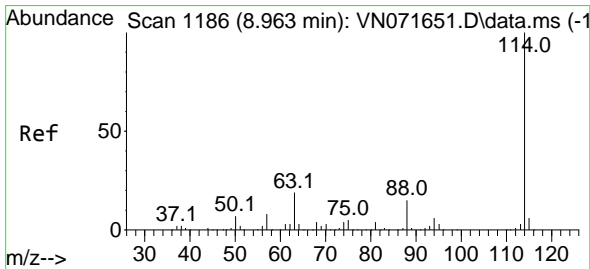
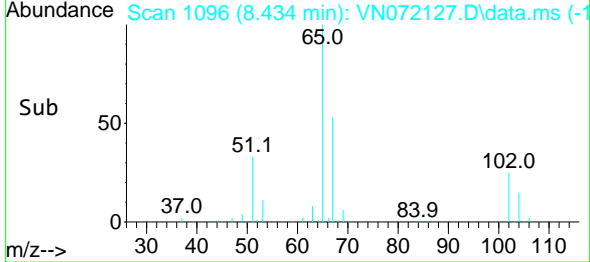
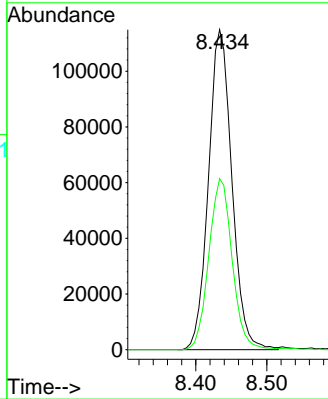
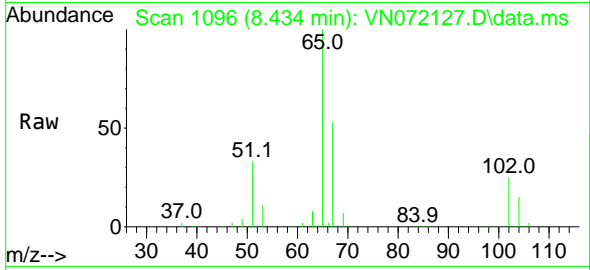




#33  
 1,2-Dichloroethane-d4  
 Concen: 48.168 ug/l  
 RT: 8.434 min Scan# 1096  
 Delta R.T. -0.000 min  
 Lab File: VN072127.D  
 Acq: 21 Apr 2022 15:57

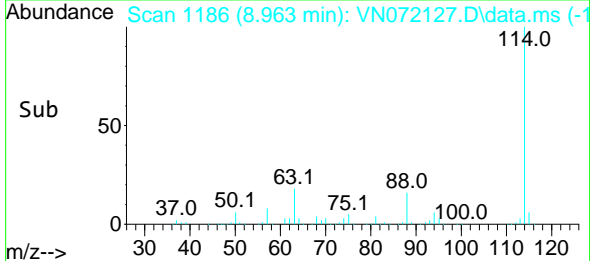
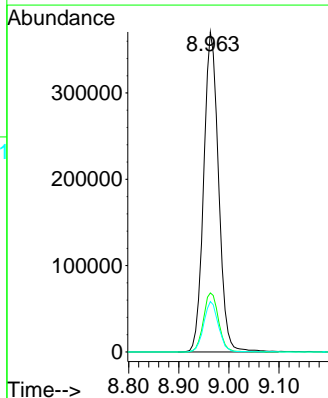
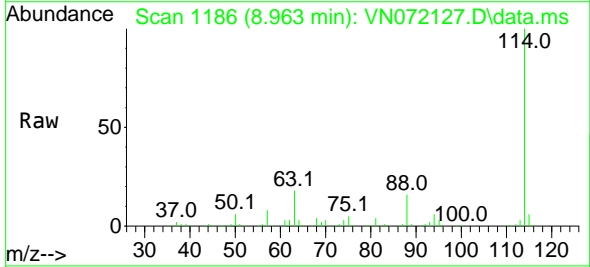
Instrument : MSVOA\_N  
 ClientSampleId : EB-2022-04-19

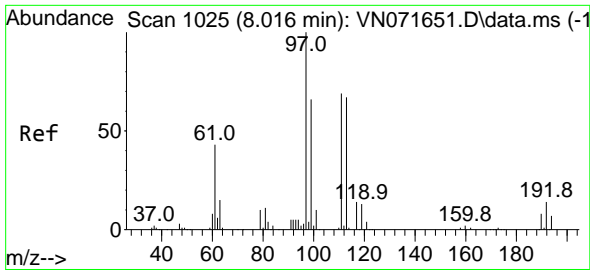
Tgt Ion: 65 Resp: 262678  
 Ion Ratio Lower Upper  
 65 100  
 67 53.3 0.0 104.8



#34  
 1,4-Difluorobenzene  
 Concen: 50.000 ug/l  
 RT: 8.963 min Scan# 1186  
 Delta R.T. -0.000 min  
 Lab File: VN072127.D  
 Acq: 21 Apr 2022 15:57

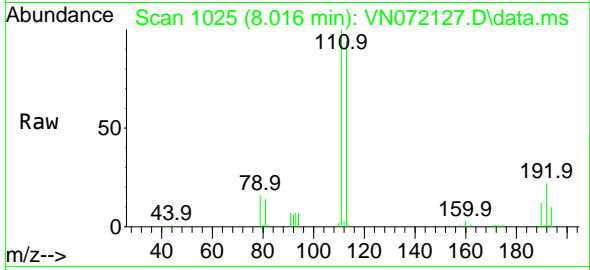
Tgt Ion:114 Resp: 764257  
 Ion Ratio Lower Upper  
 114 100  
 63 18.5 0.0 40.0  
 88 15.7 0.0 32.6



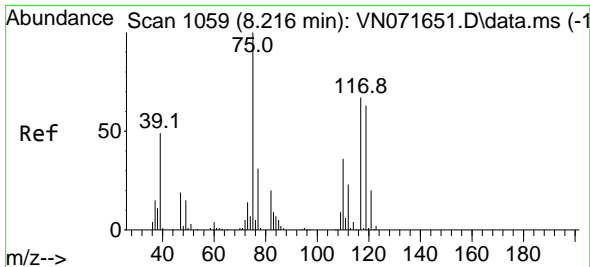
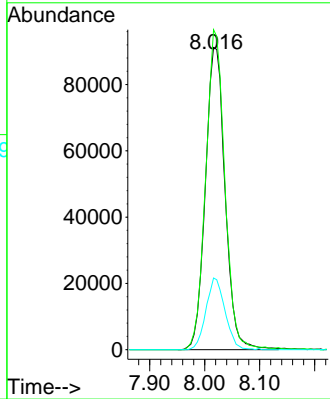
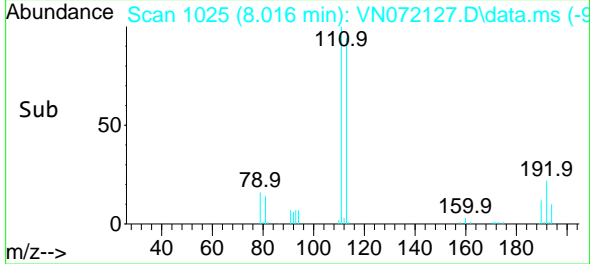


#35  
 Dibromofluoromethane  
 Concen: 50.540 ug/l  
 RT: 8.016 min Scan# 1025  
 Delta R.T. -0.000 min  
 Lab File: VN072127.D  
 Acq: 21 Apr 2022 15:57

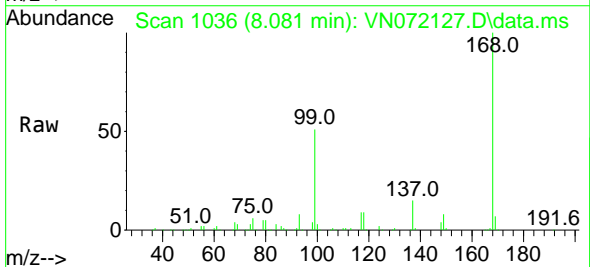
Instrument : MSVOA\_N  
 ClientSampleId : EB-2022-04-19



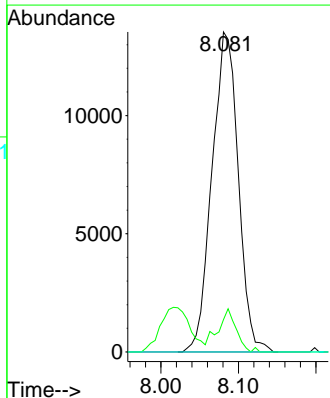
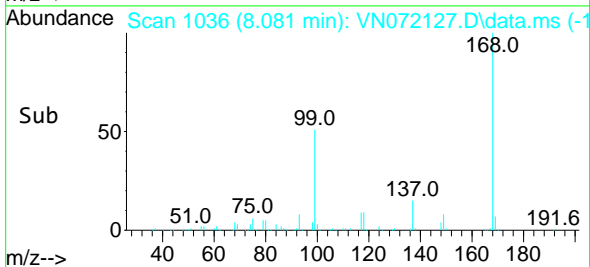
Tgt Ion: 113 Resp: 227288  
 Ion Ratio Lower Upper  
 113 100  
 111 103.0 81.4 122.0  
 192 22.9 17.0 25.6



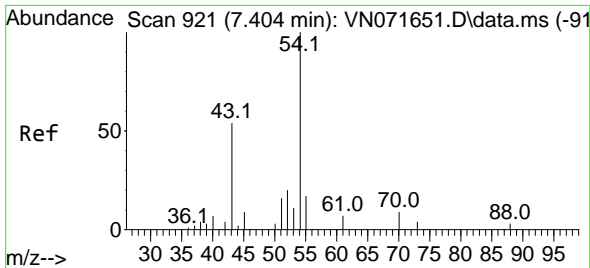
#36  
 1,1-Dichloropropene  
 Concen: 5.078 ug/l  
 RT: 8.081 min Scan# 1036  
 Delta R.T. -0.135 min  
 Lab File: VN072127.D  
 Acq: 21 Apr 2022 15:57



Tgt Ion: 75 Resp: 31891  
 Ion Ratio Lower Upper  
 75 100  
 110 9.4 18.3 54.8#  
 77 0.0 25.1 37.7#

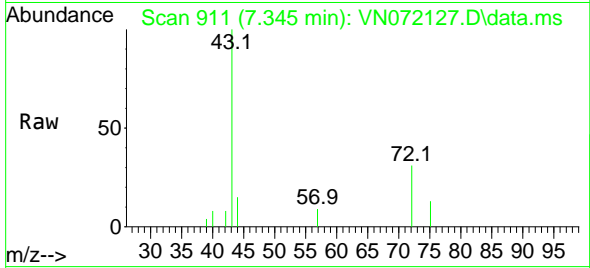




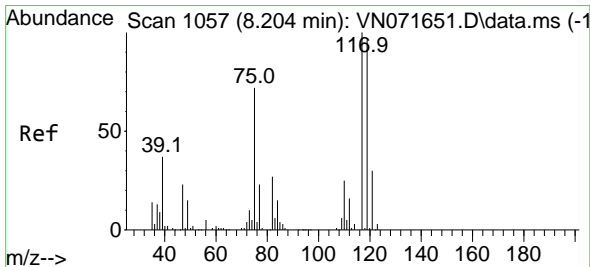
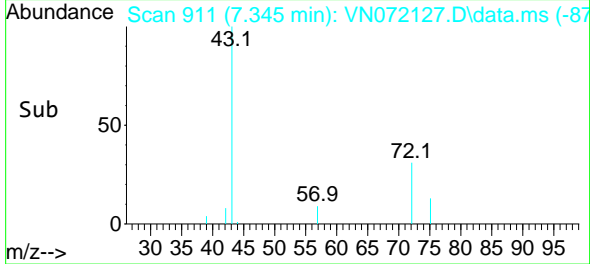
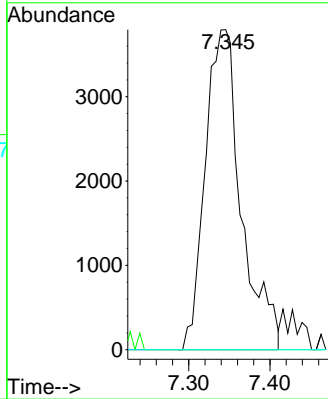


#37  
 Ethyl Acetate  
 Concen: 1.701 ug/l  
 RT: 7.345 min Scan# 911  
 Delta R.T. -0.059 min  
 Lab File: VN072127.D  
 Acq: 21 Apr 2022 15:57

Instrument : MSVOA\_N  
 ClientSampleId : EB-2022-04-19

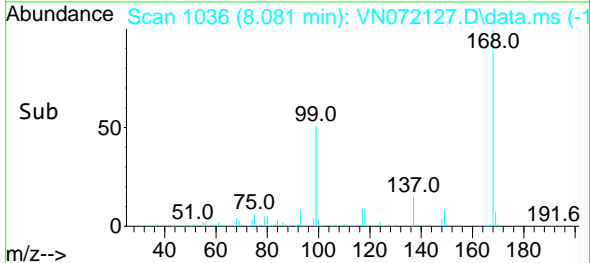
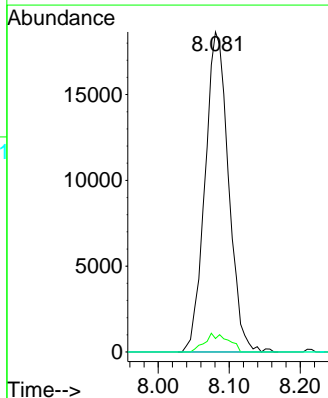
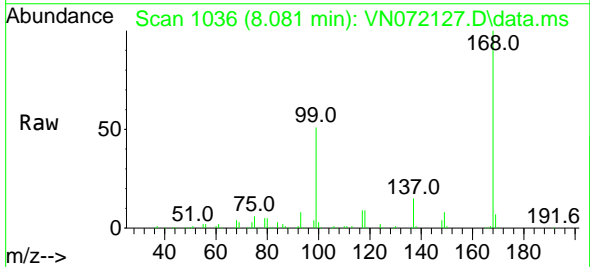


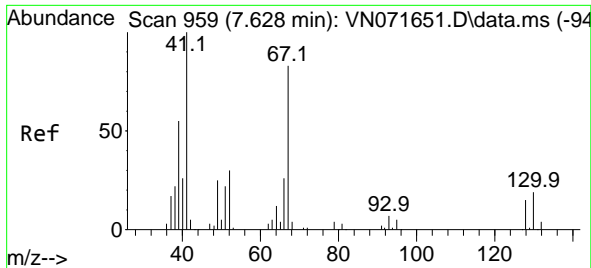
Tgt Ion	Resp	Ion Ratio	Lower	Upper
43	11691	100		
61		0.0	11.8	17.6#
70		0.0	9.3	13.9#



#38  
 Carbon Tetrachloride  
 Concen: 6.979 ug/l  
 RT: 8.081 min Scan# 1036  
 Delta R.T. -0.123 min  
 Lab File: VN072127.D  
 Acq: 21 Apr 2022 15:57

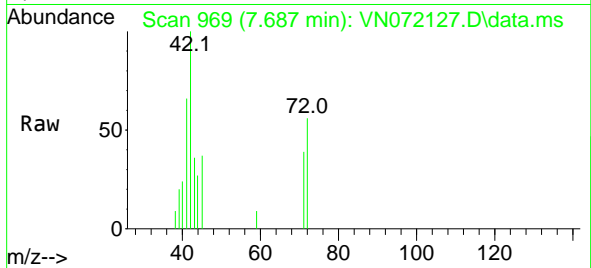
Tgt Ion	Resp	Ion Ratio	Lower	Upper
117	42954	100		
119		4.2	75.8	113.8#
121		0.0	24.6	37.0#



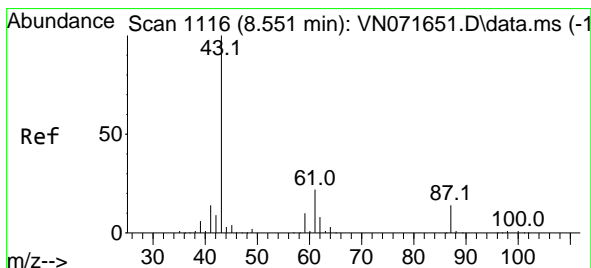
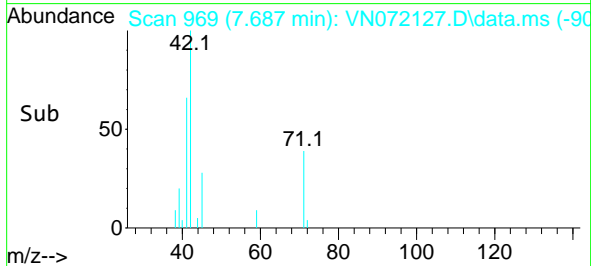
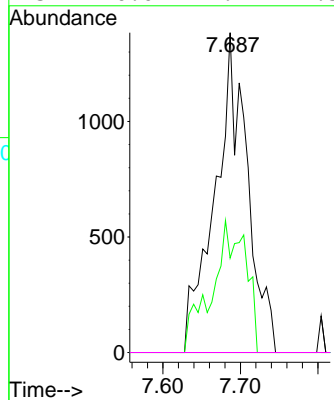


#41  
 Methacrylonitrile  
 Concen: 1.199 ug/l  
 RT: 7.687 min Scan# 90  
 Delta R.T. 0.059 min  
 Lab File: VN072127.D  
 Acq: 21 Apr 2022 15:57

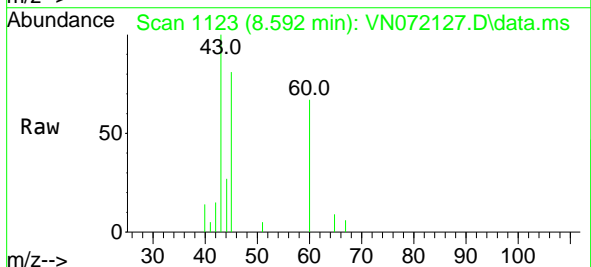
Instrument :  
 MSVOA\_N  
 ClientSampleId :  
 EB-2022-04-19



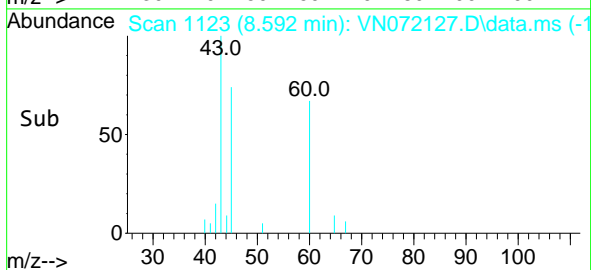
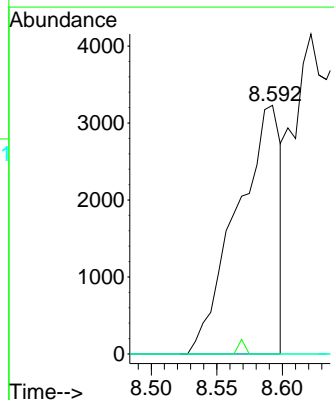
Tgt Ion: 41 Resp: 4034  
 Ion Ratio Lower Upper  
 41 100  
 39 25.0 48.6 73.0#  
 67 0.0 73.4 110.2#  
 52 0.0 27.7 41.5#

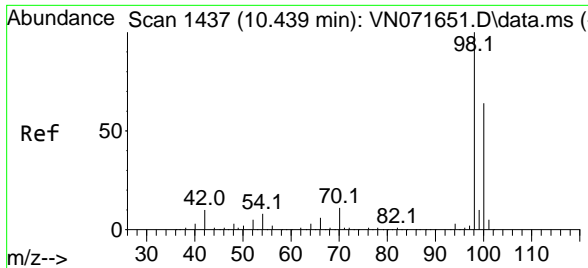


#43  
 Isopropyl Acetate  
 Concen: 0.658 ug/l  
 RT: 8.592 min Scan# 1123  
 Delta R.T. 0.041 min  
 Lab File: VN072127.D  
 Acq: 21 Apr 2022 15:57



Tgt Ion: 43 Resp: 7519  
 Ion Ratio Lower Upper  
 43 100  
 61 0.0 21.9 32.9#  
 87 0.0 12.0 18.0#

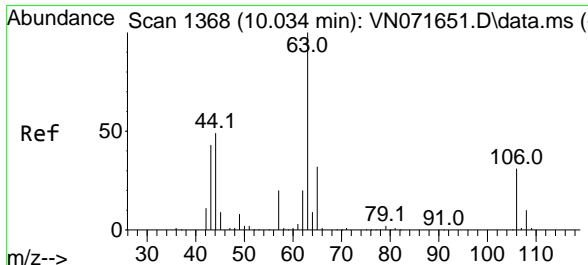
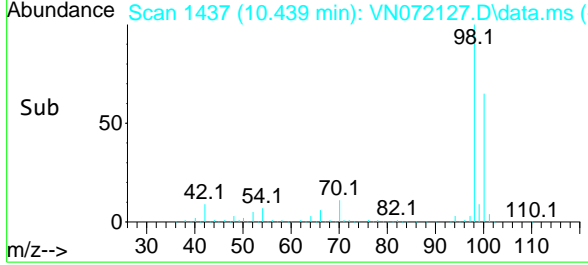
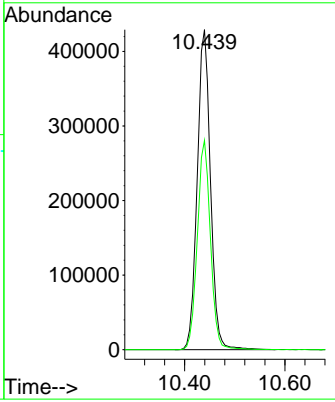
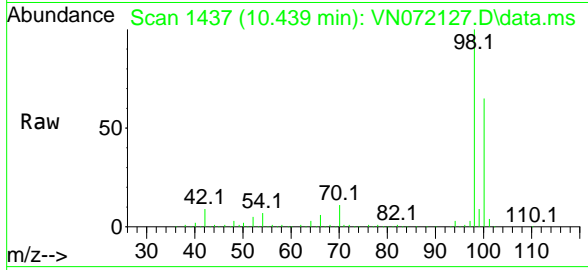




#50  
 Toluene-d8  
 Concen: 42.786 ug/l  
 RT: 10.439 min Scan# 1437  
 Delta R.T. 0.000 min  
 Lab File: VN072127.D  
 Acq: 21 Apr 2022 15:57

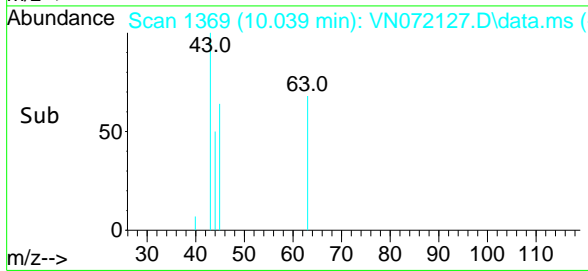
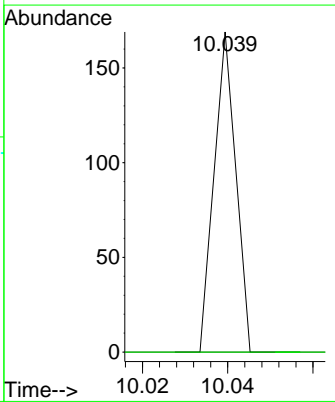
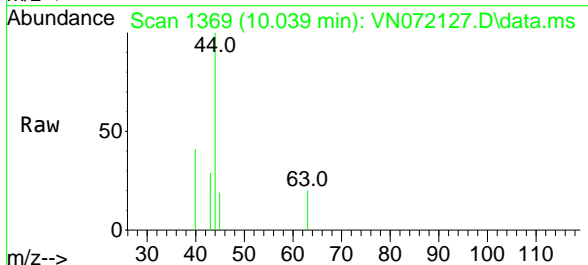
Instrument : MSVOA\_N  
 ClientSampleId : EB-2022-04-19

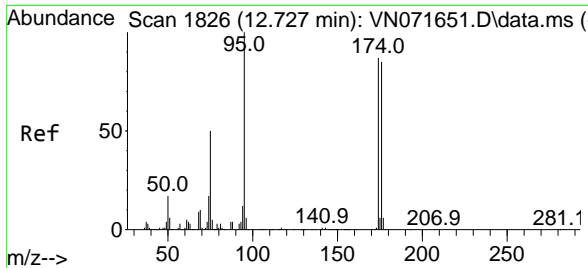
Tgt Ion: 98 Resp: 787143  
 Ion Ratio Lower Upper  
 98 100  
 100 64.9 52.6 78.8



#58  
 2-Chloroethyl Vinyl ether  
 Concen: 16.991 ug/l  
 RT: 10.039 min Scan# 1369  
 Delta R.T. 0.005 min  
 Lab File: VN072127.D  
 Acq: 21 Apr 2022 15:57

Tgt Ion: 63 Resp: 60  
 Ion Ratio Lower Upper  
 63 100  
 106 0.0 24.6 36.8#

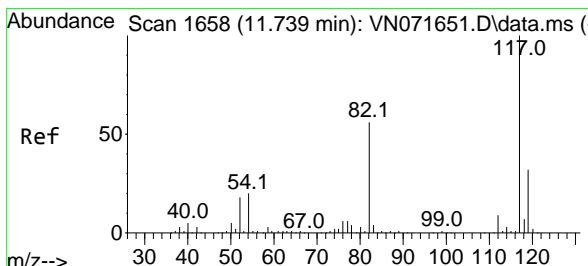
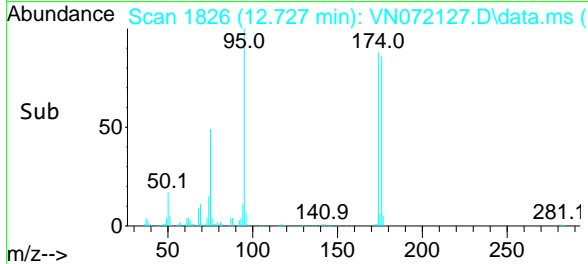
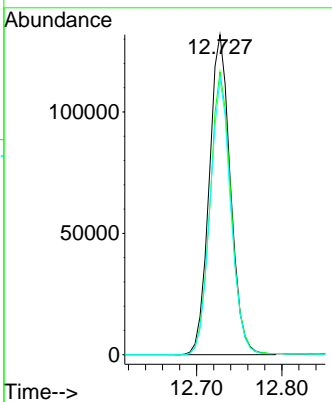
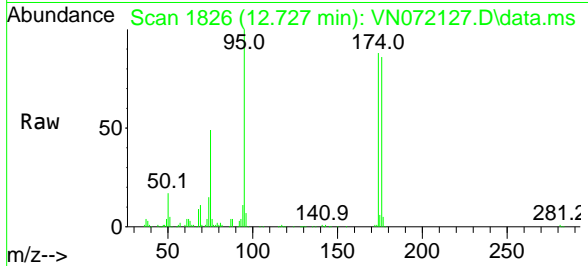




#62  
 4-Bromofluorobenzene  
 Concen: 38.265 ug/l  
 RT: 12.727 min Scan# 1826  
 Delta R.T. 0.000 min  
 Lab File: VN072127.D  
 Acq: 21 Apr 2022 15:57

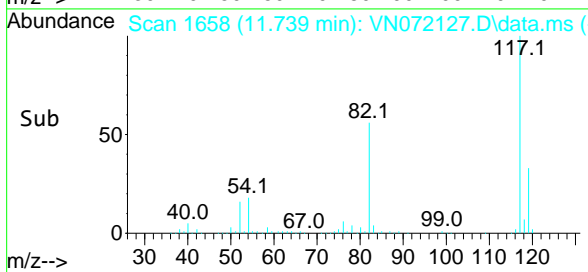
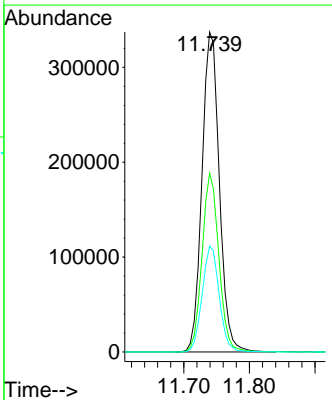
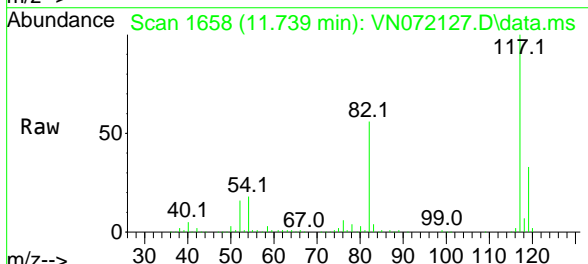
Instrument : MSVOA\_N  
 ClientSampleId : EB-2022-04-19

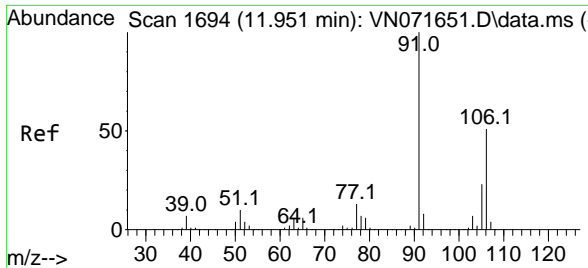
Tgt Ion	Resp	Lower	Upper
95	100		
174	88.3	0.0	167.6
176	84.5	0.0	163.4



#63  
 Chlorobenzene-d5  
 Concen: 50.000 ug/l  
 RT: 11.739 min Scan# 1658  
 Delta R.T. 0.000 min  
 Lab File: VN072127.D  
 Acq: 21 Apr 2022 15:57

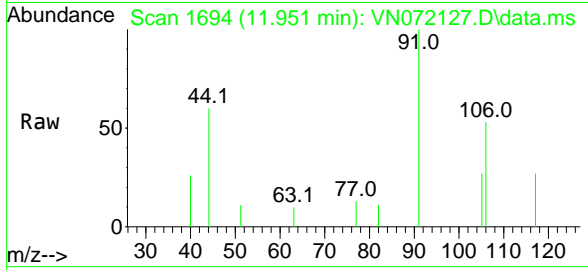
Tgt Ion	Resp	Lower	Upper
117	100		
82	55.8	44.2	66.2
119	33.1	25.4	38.0



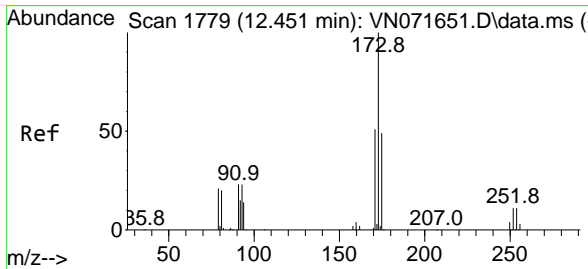
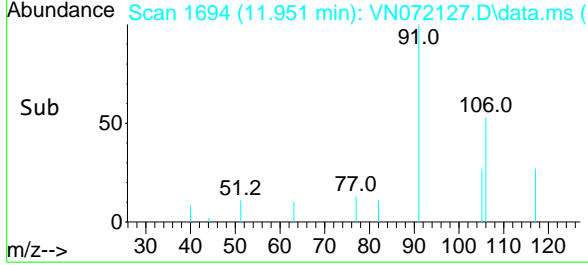
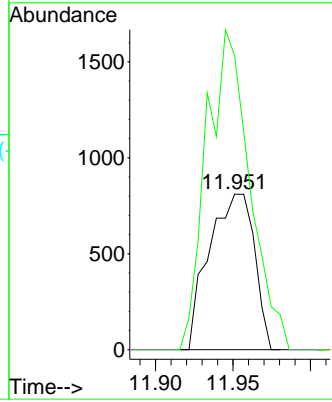


#68  
 m/p-Xylenes  
 Concen: 0.204 ug/l  
 RT: 11.951 min Scan# 1100  
 Delta R.T. 0.000 min  
 Lab File: VN072127.D  
 Acq: 21 Apr 2022 15:57

Instrument : MSVOA\_N  
 ClientSampleId : EB-2022-04-19

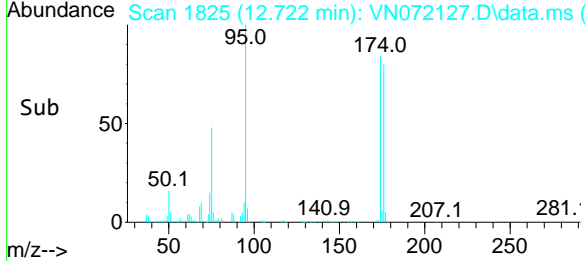
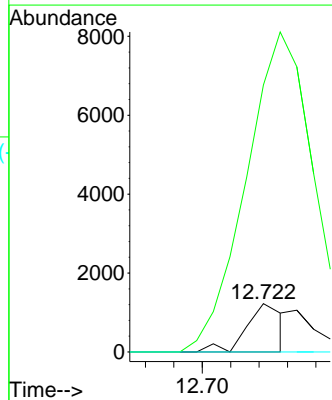
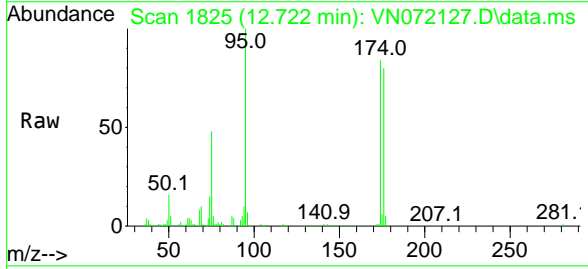


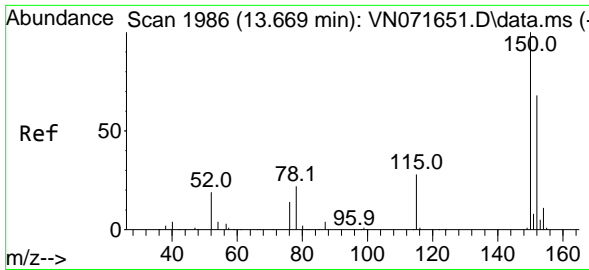
Tgt Ion:106 Resp: 1650  
 Ion Ratio Lower Upper  
 106 100  
 91 195.4 158.9 238.3



#71  
 Bromoform  
 Concen: 0.316 ug/l  
 RT: 12.722 min Scan# 1825  
 Delta R.T. 0.271 min  
 Lab File: VN072127.D  
 Acq: 21 Apr 2022 15:57

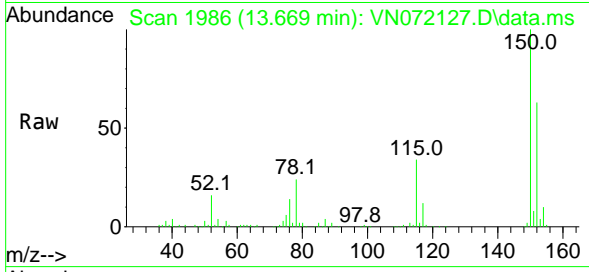
Tgt Ion:173 Resp: 1082  
 Ion Ratio Lower Upper  
 173 100  
 175 0.0 24.6 73.6#  
 254 0.0 0.1 0.1#



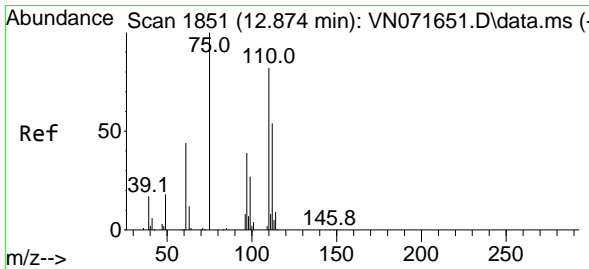
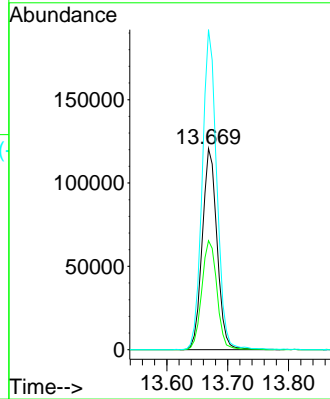
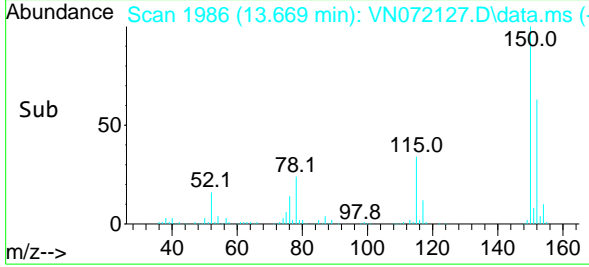


#72  
 1,4-Dichlorobenzene-d4  
 Concen: 50.000 ug/l  
 RT: 13.669 min Scan# 1986  
 Delta R.T. -0.000 min  
 Lab File: VN072127.D  
 Acq: 21 Apr 2022 15:57

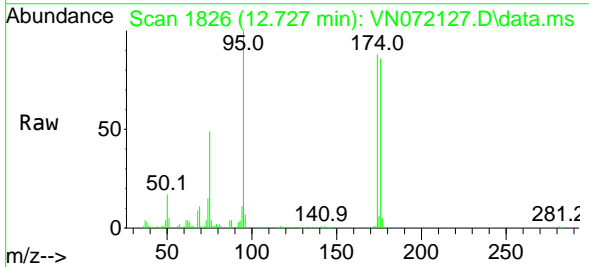
Instrument : MSVOA\_N  
 ClientSampleId : EB-2022-04-19



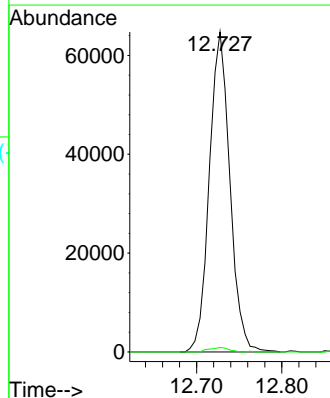
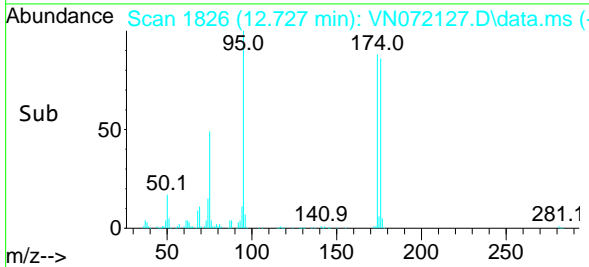
Tgt Ion:152 Resp: 203618  
 Ion Ratio Lower Upper  
 152 100  
 115 55.7 28.9 86.7  
 150 156.8 0.0 356.2

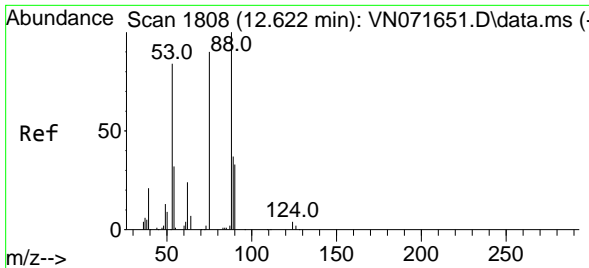


#76  
 1,2,3-Trichloropropane  
 Concen: 22.995 ug/l  
 RT: 12.727 min Scan# 1826  
 Delta R.T. -0.147 min  
 Lab File: VN072127.D  
 Acq: 21 Apr 2022 15:57



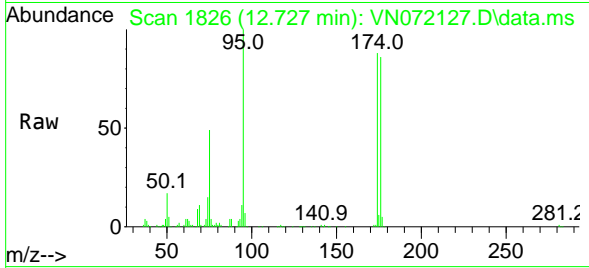
Tgt Ion: 75 Resp: 108468  
 Ion Ratio Lower Upper  
 75 100  
 77 1.3 98.5 295.5#



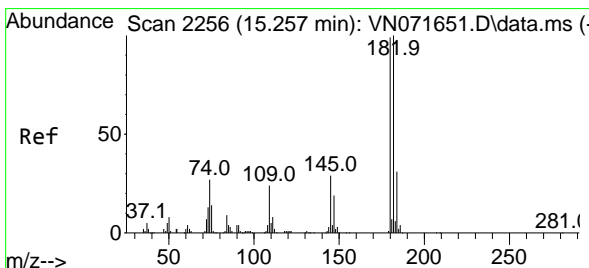
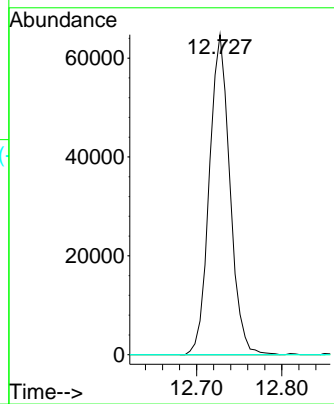
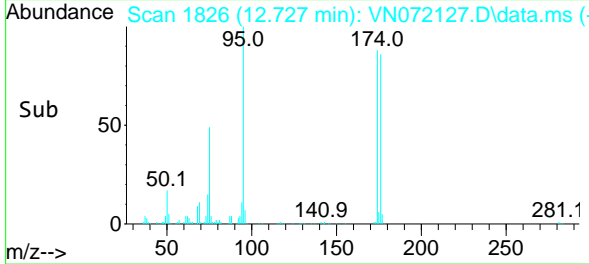


#81  
 trans-1,4-Dichloro-2-butene  
 Concen: 71.262 ug/l  
 RT: 12.727 min Scan# 1826  
 Delta R.T. 0.105 min  
 Lab File: VN072127.D  
 Acq: 21 Apr 2022 15:57

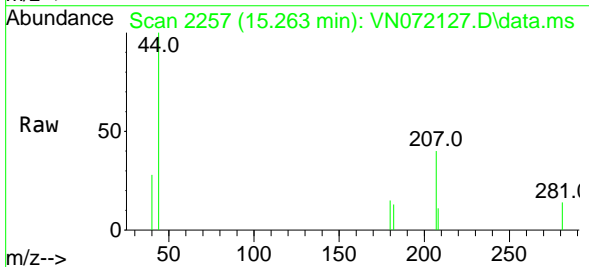
Instrument : MSVOA\_N  
 ClientSampleId : EB-2022-04-19



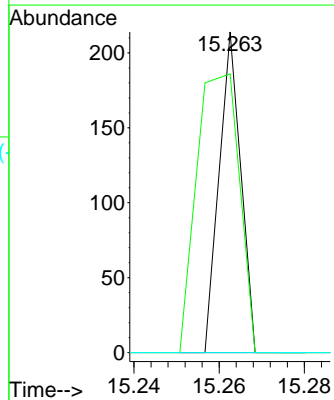
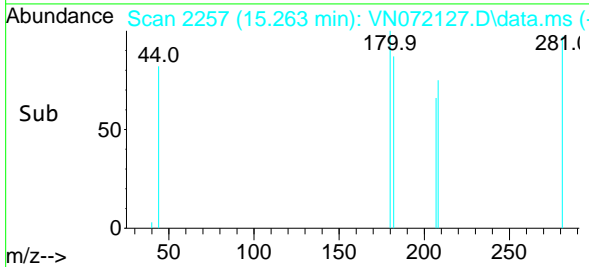
Tgt Ion: 75 Resp: 108468  
 Ion Ratio Lower Upper  
 75 100  
 53 0.0 78.0 117.0#  
 89 0.0 37.2 55.8#

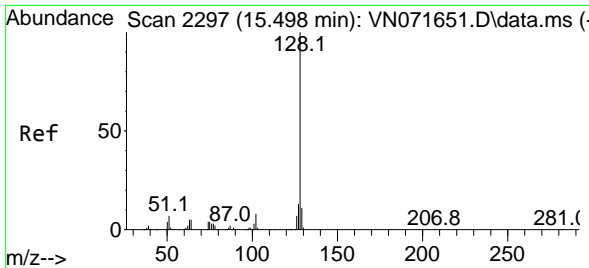


#93  
 1,2,4-Trichlorobenzene  
 Concen: 2.108 ug/l  
 RT: 15.263 min Scan# 2257  
 Delta R.T. 0.006 min  
 Lab File: VN072127.D  
 Acq: 21 Apr 2022 15:57



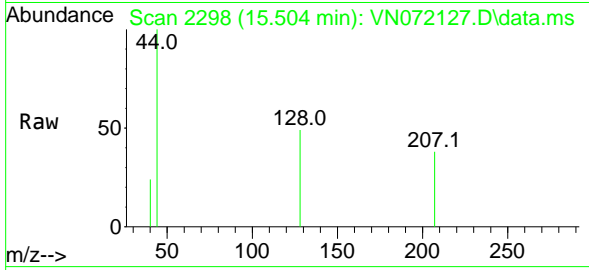
Tgt Ion:180 Resp: 76  
 Ion Ratio Lower Upper  
 180 100  
 182 169.7 47.5 142.5#  
 145 0.0 14.5 43.5#





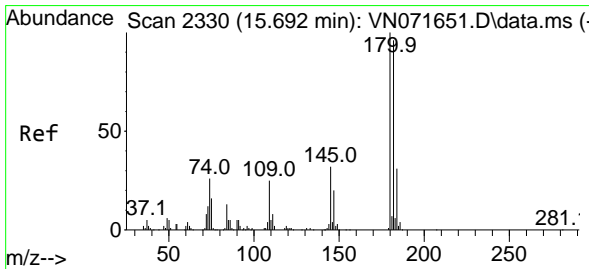
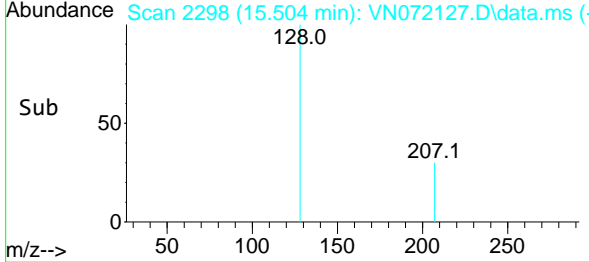
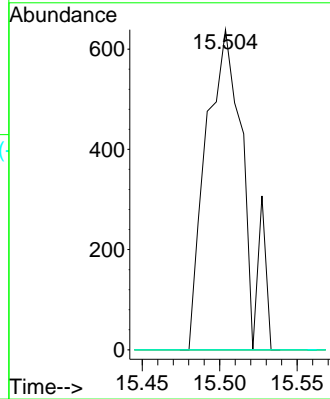
#95  
 Naphthalene  
 Concen: 3.912 ug/l  
 RT: 15.504 min Scan# 2298  
 Delta R.T. 0.006 min  
 Lab File: VN072127.D  
 Acq: 21 Apr 2022 15:57

Instrument : MSVOA\_N  
 ClientSampleId : EB-2022-04-19

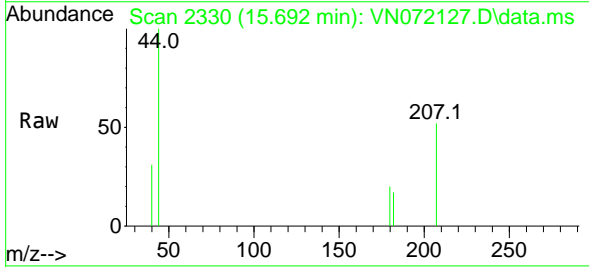


Tgt Ion:128 Resp: 1092

Ion	Ratio	Lower	Upper
128	100		
127	0.0	10.3	15.5#
129	0.0	8.6	13.0#



#96  
 1,2,3-Trichlorobenzene  
 Concen: 2.440 ug/l  
 RT: 15.692 min Scan# 2330  
 Delta R.T. -0.000 min  
 Lab File: VN072127.D  
 Acq: 21 Apr 2022 15:57



Tgt Ion:180 Resp: 85

Ion	Ratio	Lower	Upper
180	100		
182	84.7	47.8	143.3
145	0.0	15.5	46.5#

