

Data Path : Z:\voasrv\HPCHEM1\MSVOA_N\Data\VN042123\
 Data File : VN077427.D
 Acq On : 21 Apr 2023 17:14
 Operator : JC\MD
 Sample : 02468-01
 Misc : 5.0mL/MSVOA_N/WATER
 ALS Vial : 15 Sample Multiplier: 1

Instrument :
 MSVOA_N
 ClientSampleId :
 SUMP-PUMP-GW-SAMPLE

Quant Time: Apr 22 02:40:42 2023
 Quant Method : Z:\voasrv\HPCHEM1\MSVOA_N\methods\624N040723W.M
 Quant Title : METHOD 624 VOLATILE ORGANIC ANALYSIS
 QLast Update : Fri Apr 07 13:04:49 2023
 Response via : Initial Calibration

Manual Integrations
 APPROVED

Reviewed By :John Carlone 04/24/2023
 Supervised By :Mahesh Dadoda 04/24/2023

Compound	R.T.	QIon	Response	Conc	Units	Dev(Min)

Internal Standards						
1) Bromochloromethane	7.819	128	54928	30.000	ug/l	0.00
28) 1,4-Difluorobenzene	9.107	114	396981	30.000	ug/l	0.00
57) Chlorobenzene-d5	11.866	117	400128	30.000	ug/l	0.00
System Monitoring Compounds						
27) 1,2-Dichloroethane-d4	8.589	65	140306	30.118	ug/l	0.00
Spiked Amount	30.000	Range 91 - 110	Recovery	=	100.400%	
60) 4-Bromofluorobenzene	12.854	95	178780	25.840	ug/l	0.00
Spiked Amount	30.000	Range 63 - 112	Recovery	=	86.133%	
63) Toluene-d8	10.572	98	417229	29.661	ug/l	0.00
Spiked Amount	30.000	Range 91 - 112	Recovery	=	98.867%	
Target Compounds						
						Qvalue
25) Chloroform	7.972	83	4108m	0.337	ug/l	
37) Trichloroethene	9.360	130	2220	0.341	ug/l	93
61) Tetrachloroethene	11.095	164	2572m	0.540	ug/l	

(#) = qualifier out of range (m) = manual integration (+) = signals summed

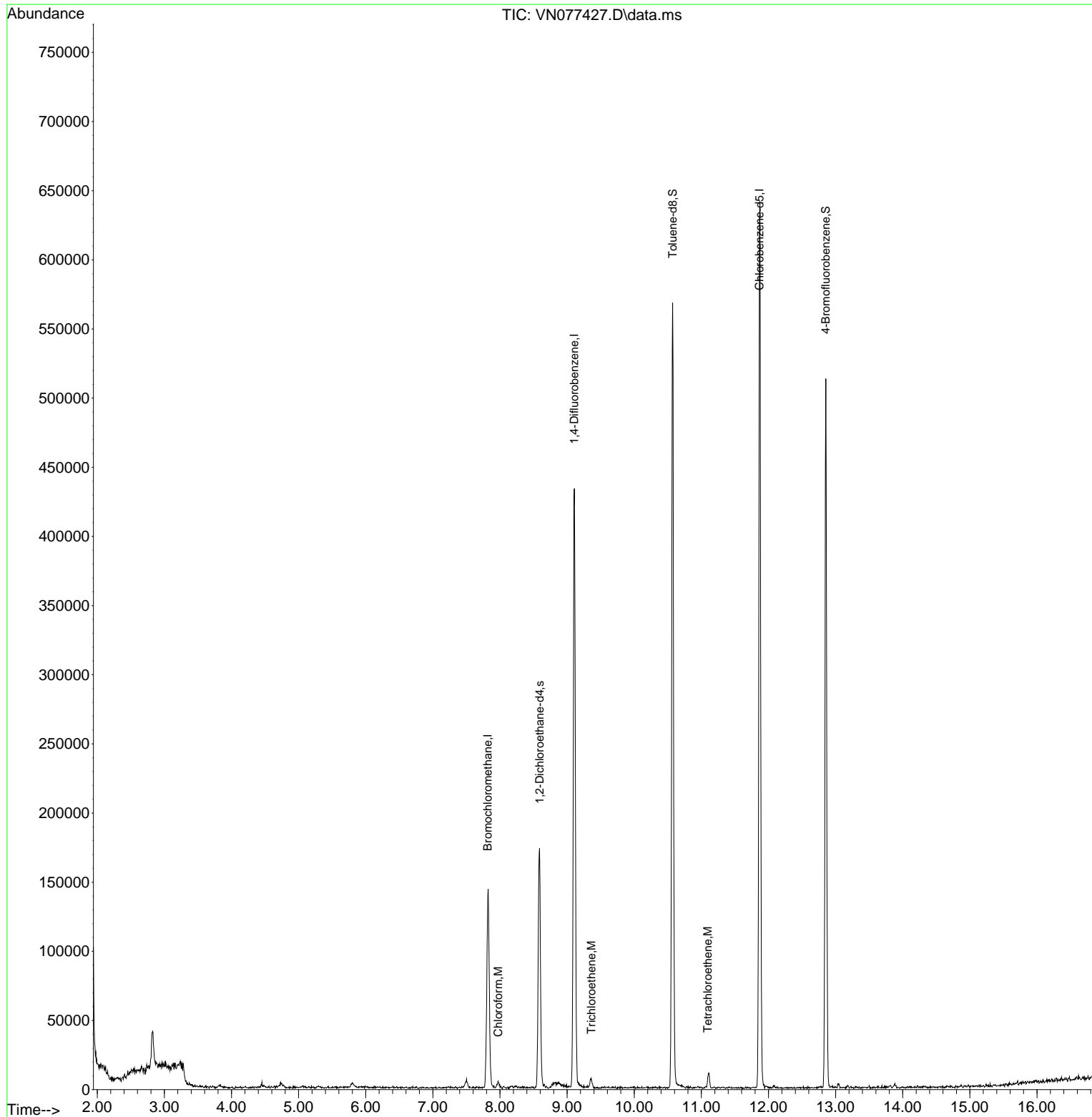
Data Path : Z:\voasrv\HPCHEM1\MSVOA_N\Data\VN042123\
 Data File : VN077427.D
 Acq On : 21 Apr 2023 17:14
 Operator : JC\MD
 Sample : 02468-01
 Misc : 5.0mL/MSVOA_N/WATER
 ALS Vial : 15 Sample Multiplier: 1

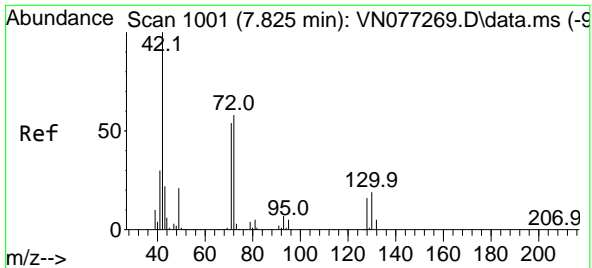
Instrument :
 MSVOA_N
 ClientSampleId :
 SUMP-PUMP-GW-SAMPLE

Quant Time: Apr 22 02:40:42 2023
 Quant Method : Z:\voasrv\HPCHEM1\MSVOA_N\methods\624N040723W.M
 Quant Title : METHOD 624 VOLATILE ORGANIC ANALYSIS
 QLast Update : Fri Apr 07 13:04:49 2023
 Response via : Initial Calibration

Manual Integrations
 APPROVED

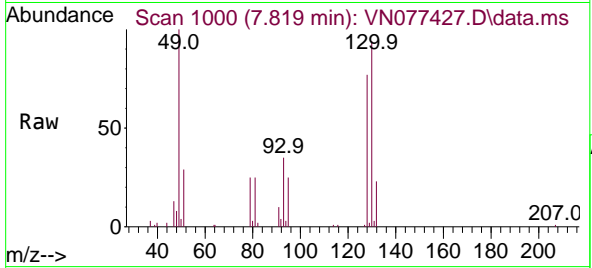
Reviewed By : John Carlone 04/24/2023
 Supervised By : Mahesh Dadoda 04/24/2023





#1
 Bromochloromethane
 Concen: 30.000 ug/l
 RT: 7.819 min Scan# 1000
 Delta R.T. -0.006 min
 Lab File: VN077427.D
 Acq: 21 Apr 2023 17:14

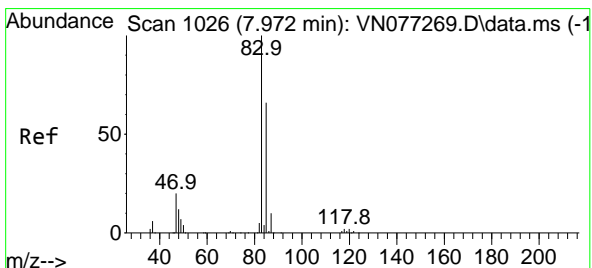
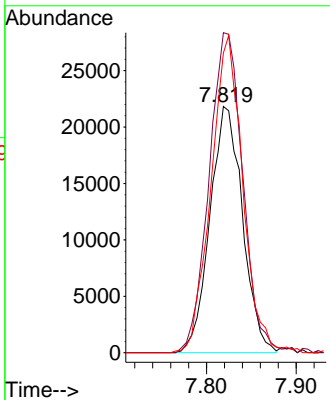
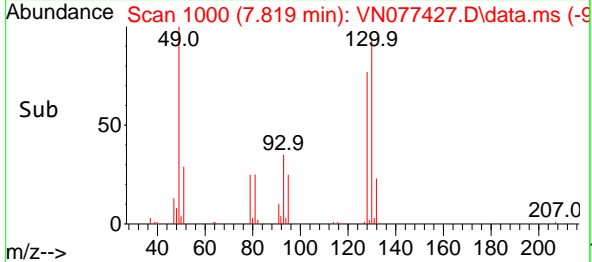
Instrument : MSVOA_N
 ClientSampleId : SUMP-PUMP-GW-SAMPLE



Tgt Ion:128 Resp: 5492
 Ion Ratio Lower Upper
 128 100
 49 134.5 0.0 379.5
 130 125.2 0.0 322.8

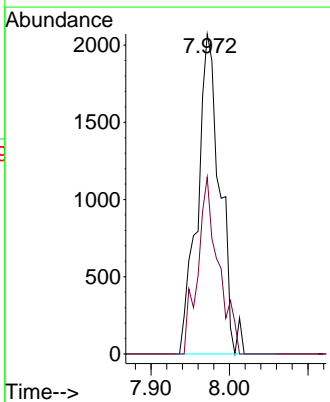
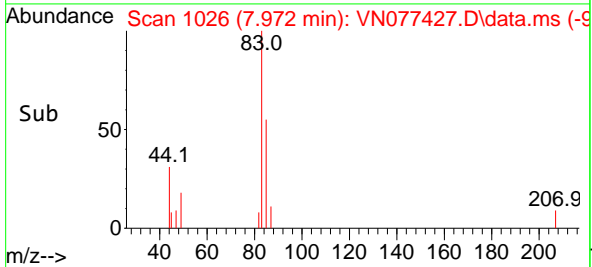
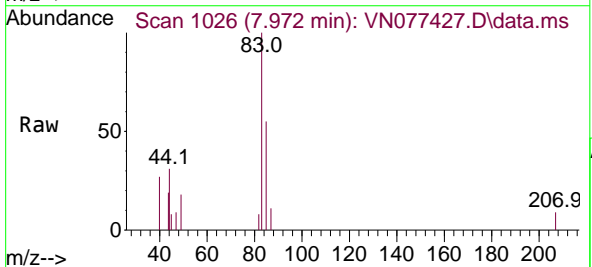
Manual Integrations
APPROVED

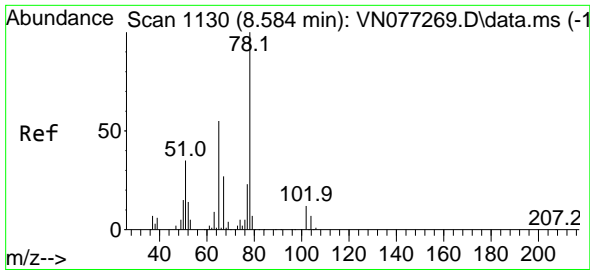
Reviewed By :John Carlone 04/24/2023
 Supervised By :Mahesh Dadoda 04/24/2023



#25
 Chloroform
 Concen: 0.337 ug/l m
 RT: 7.972 min Scan# 1026
 Delta R.T. -0.000 min
 Lab File: VN077427.D
 Acq: 21 Apr 2023 17:14

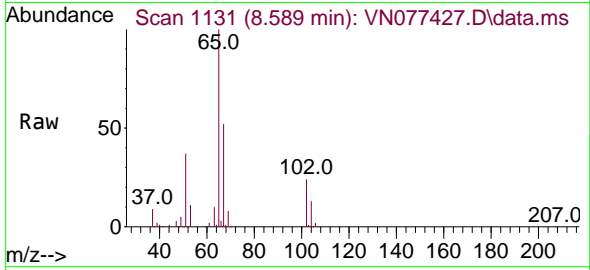
Tgt Ion: 83 Resp: 4108
 Ion Ratio Lower Upper
 83 100
 85 55.3 52.9 79.3





#27
 1,2-Dichloroethane-d4
 Concen: 30.118 ug/l
 RT: 8.589 min Scan# 1131
 Delta R.T. 0.005 min
 Lab File: VN077427.D
 Acq: 21 Apr 2023 17:14

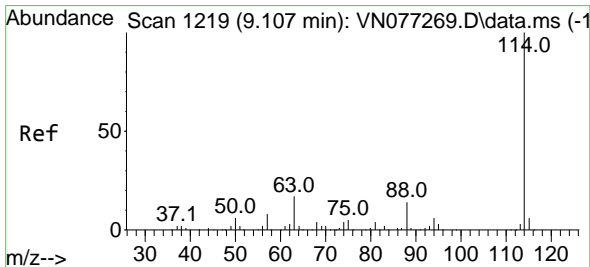
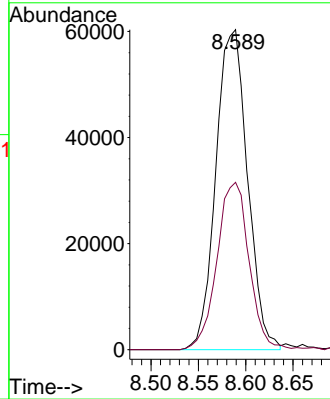
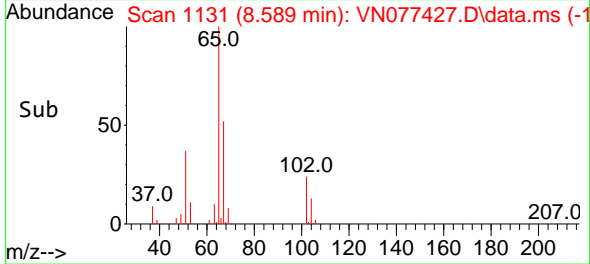
Instrument : MSVOA_N
 ClientSampleId : SUMP-PUMP-GW-SAMPLE



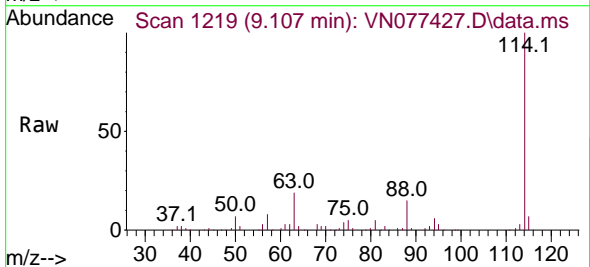
Tgt Ion: 65 Resp: 140300
 Ion Ratio Lower Upper
 65 100
 67 53.0 41.8 62.6

Manual Integrations
APPROVED

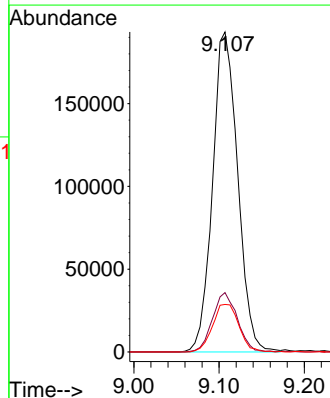
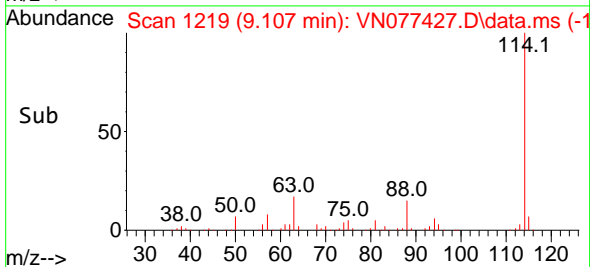
Reviewed By :John Carlone 04/24/2023
 Supervised By :Mahesh Dadoda 04/24/2023

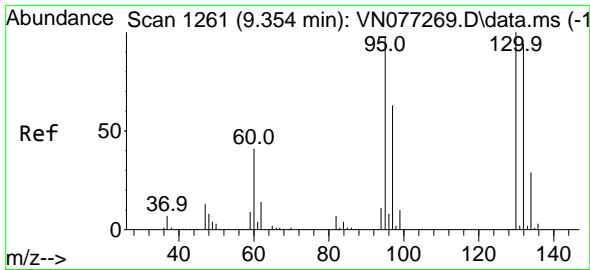


#28
 1,4-Difluorobenzene
 Concen: 30.000 ug/l
 RT: 9.107 min Scan# 1219
 Delta R.T. -0.000 min
 Lab File: VN077427.D
 Acq: 21 Apr 2023 17:14



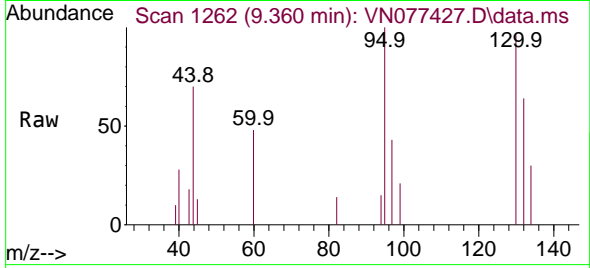
Tgt Ion:114 Resp: 396981
 Ion Ratio Lower Upper
 114 100
 63 18.4 15.0 22.4
 88 15.6 11.9 17.9





#37
 Trichloroethene
 Concen: 0.341 ug/l
 RT: 9.360 min Scan# 1261
 Delta R.T. 0.006 min
 Lab File: VN077427.D
 Acq: 21 Apr 2023 17:14

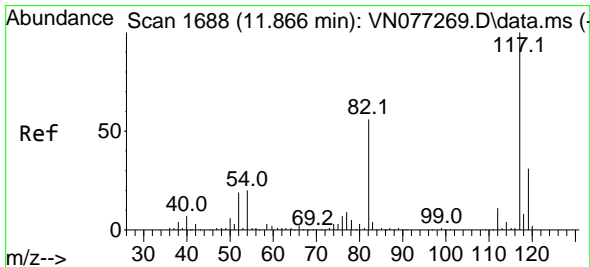
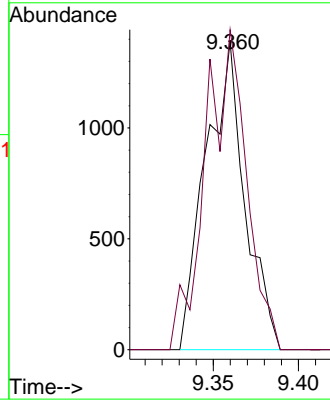
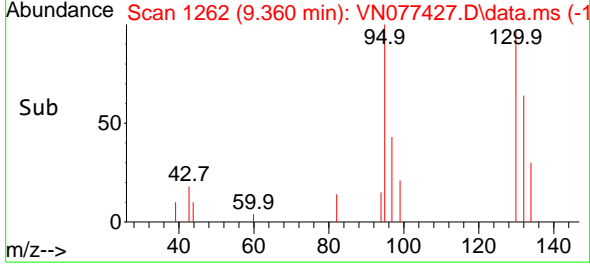
Instrument : MSVOA_N
 ClientSampleId : SUMP-PUMP-GW-SAMPLE



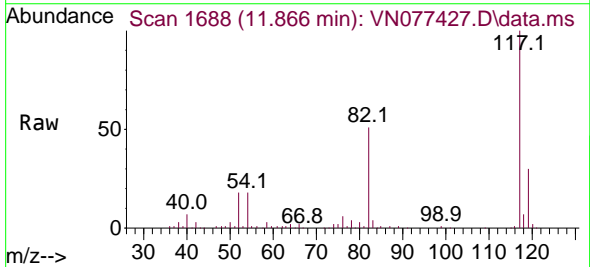
Tgt Ion:130 Resp: 2220
 Ion Ratio Lower Upper
 130 100
 95 103.7 77.5 116.3

Manual Integrations
APPROVED

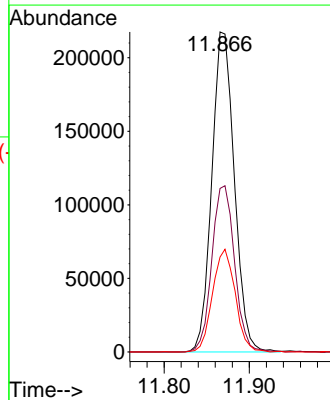
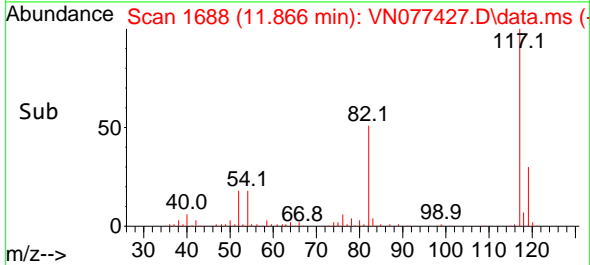
Reviewed By :John Carlone 04/24/2023
 Supervised By :Mahesh Dadoda 04/24/2023

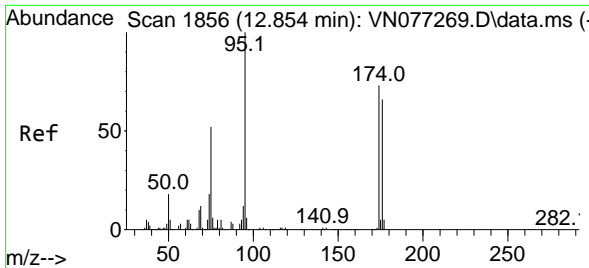


#57
 Chlorobenzene-d5
 Concen: 30.000 ug/l
 RT: 11.866 min Scan# 1688
 Delta R.T. -0.000 min
 Lab File: VN077427.D
 Acq: 21 Apr 2023 17:14



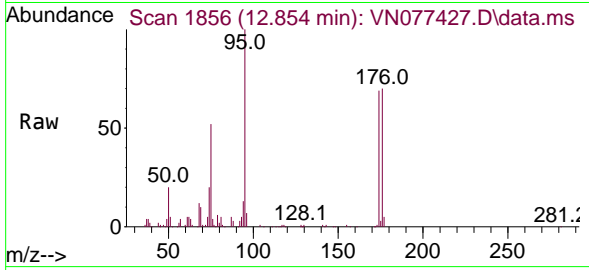
Tgt Ion:117 Resp: 400128
 Ion Ratio Lower Upper
 117 100
 82 52.4 43.8 65.8
 119 32.3 25.4 38.0





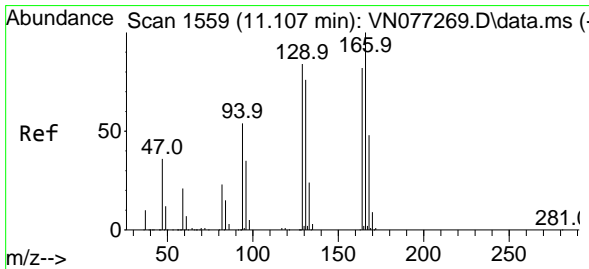
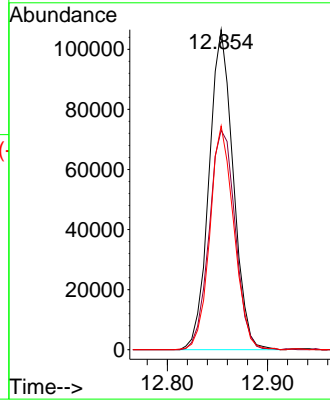
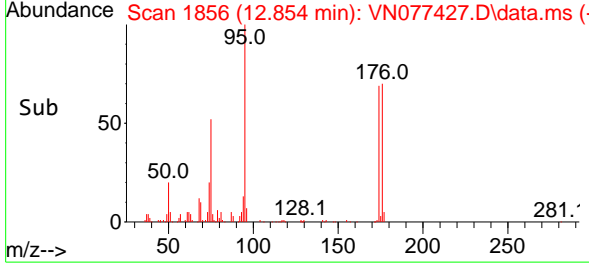
#60
 4-Bromofluorobenzene
 Concen: 25.840 ug/l
 RT: 12.854 min Scan# 1856
 Delta R.T. -0.000 min
 Lab File: VN077427.D
 Acq: 21 Apr 2023 17:14

Instrument : MSVOA_N
 ClientSampleId : SUMP-PUMP-GW-SAMPLE

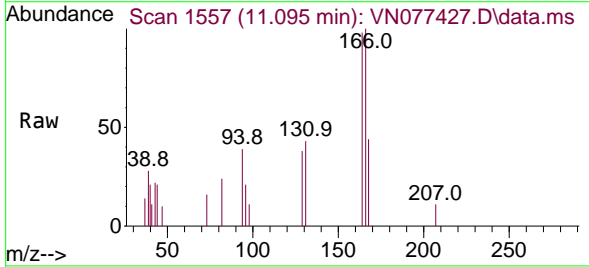


Tgt Ion: 95 Resp: 178780
 Ion Ratio Lower Upper
 95 100
 174 73.5 57.8 86.8
 176 69.4 54.6 81.8

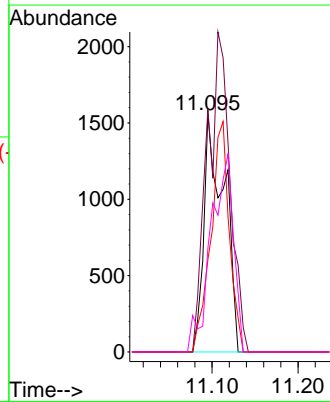
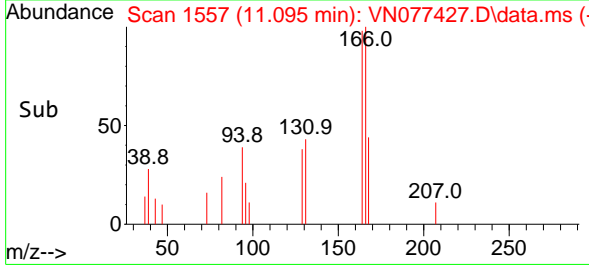
Manual Integrations
APPROVED
 Reviewed By :John Carlone 04/24/2023
 Supervised By :Mahesh Dadoda 04/24/2023

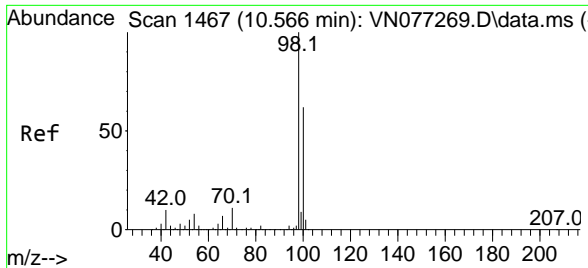


#61
 Tetrachloroethene
 Concen: 0.540 ug/l m
 RT: 11.095 min Scan# 1557
 Delta R.T. -0.012 min
 Lab File: VN077427.D
 Acq: 21 Apr 2023 17:14



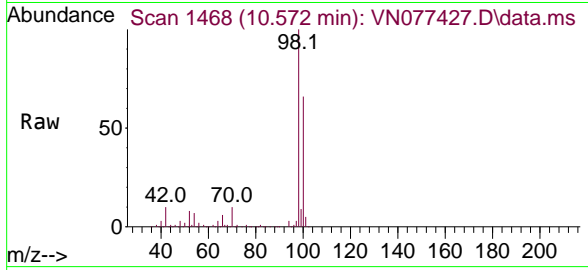
Tgt Ion:164 Resp: 2572
 Ion Ratio Lower Upper
 164 100
 166 102.4 97.9 146.9
 129 38.9 82.5 123.7#
 131 43.6 74.0 111.0#





#63
 Toluene-d8
 Concen: 29.661 ug/l
 RT: 10.572 min Scan# 14
 Delta R.T. 0.006 min
 Lab File: VN077427.D
 Acq: 21 Apr 2023 17:14

Instrument :
 MSVOA_N
ClientSampleId :
 SUMP-PUMP-GW-SAMPLE



Tgt Ion: 98 Resp: 417229
 Ion Ratio Lower Upper
 98 100
 100 65.3 51.4 77.2

Manual Integrations
APPROVED
 Reviewed By :John Carlone 04/24/2023
 Supervised By :Mahesh Dadoda 04/24/2023

