

Data Path : Z:\voasrv\HPCHEM1\MSVOA_N\Data\VN042125\
 Data File : VN086357.D
 Acq On : 21 Apr 2025 13:12
 Operator : JC\MD
 Sample : VN0421WBL01
 Misc : 5.0mL/MSVOA_N/WATER
 ALS Vial : 5 Sample Multiplier: 1

Instrument :
 MSVOA_N
ClientSampleId :
 VN0421WBL01

Quant Time: Apr 22 01:50:07 2025
 Quant Method : Z:\voasrv\HPCHEM1\MSVOA_N\methods\624N041125W.M
 Quant Title : METHOD 624 VOLATILE ORGANIC ANALYSIS
 QLast Update : Sat Apr 12 01:21:52 2025
 Response via : Initial Calibration

Compound	R.T.	QIon	Response	Conc	Units	Dev(Min)
Internal Standards						
1) Bromochloromethane	7.812	128	27629	30.000	ug/l	0.00
28) 1,4-Difluorobenzene	9.100	114	164394	30.000	ug/l	0.00
57) Chlorobenzene-d5	11.865	117	145643	30.000	ug/l	0.00
System Monitoring Compounds						
27) 1,2-Dichloroethane-d4	8.577	65	80912	30.025	ug/l	0.00
Spiked Amount	30.000	Range	91 - 110	Recovery	=	100.067%
60) 4-Bromofluorobenzene	12.841	95	78582	27.100	ug/l	0.00
Spiked Amount	30.000	Range	63 - 112	Recovery	=	90.333%
63) Toluene-d8	10.565	98	240295	29.225	ug/l	0.00
Spiked Amount	30.000	Range	91 - 112	Recovery	=	97.400%

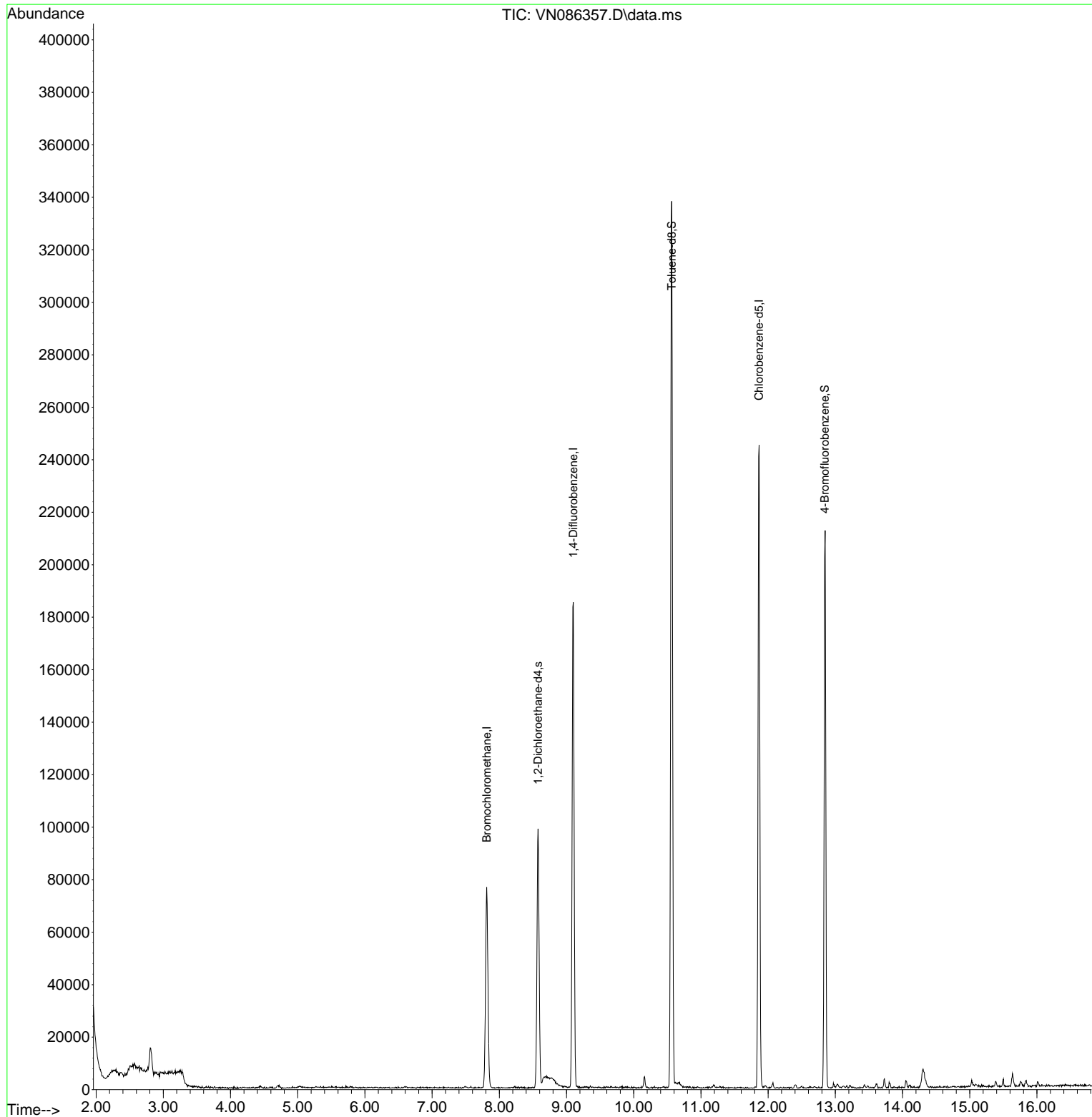
Target Compounds Qvalue

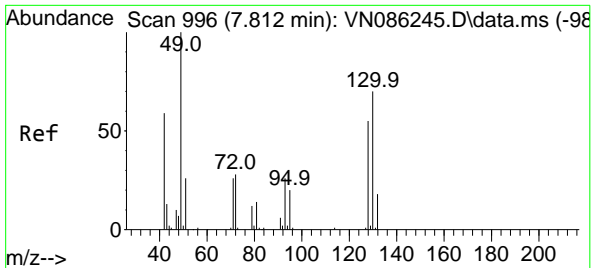
(#) = qualifier out of range (m) = manual integration (+) = signals summed

Data Path : Z:\voasrv\HPCHEM1\MSVOA_N\Data\VN042125\
 Data File : VN086357.D
 Acq On : 21 Apr 2025 13:12
 Operator : JC\MD
 Sample : VN0421WBL01
 Misc : 5.0mL/MSVOA_N/WATER
 ALS Vial : 5 Sample Multiplier: 1

Instrument :
 MSVOA_N
 ClientSampleId :
 VN0421WBL01

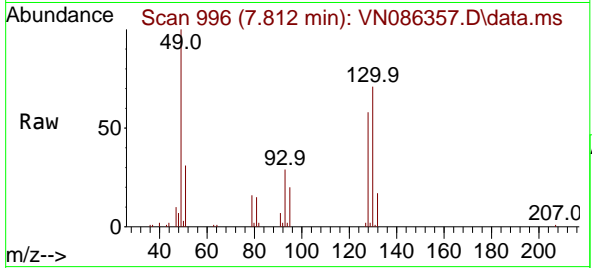
Quant Time: Apr 22 01:50:07 2025
 Quant Method : Z:\voasrv\HPCHEM1\MSVOA_N\methods\624N041125W.M
 Quant Title : METHOD 624 VOLATILE ORGANIC ANALYSIS
 QLast Update : Sat Apr 12 01:21:52 2025
 Response via : Initial Calibration



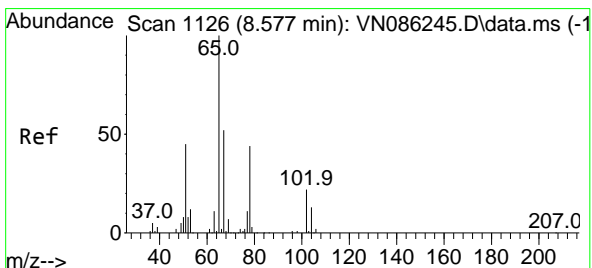
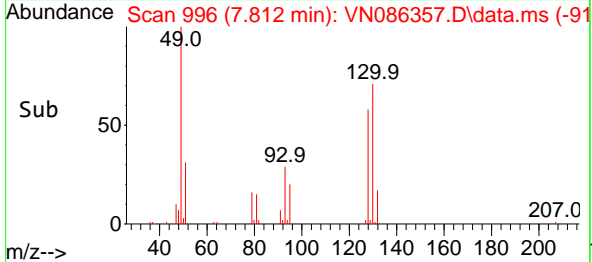
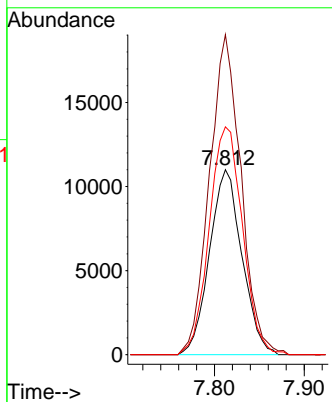


#1
 Bromochloromethane
 Concen: 30.000 ug/l
 RT: 7.812 min Scan# 996
 Delta R.T. 0.000 min
 Lab File: VN086357.D
 Acq: 21 Apr 2025 13:12

Instrument :
 MSVOA_N
 ClientSampleId :
 VN0421WBL01

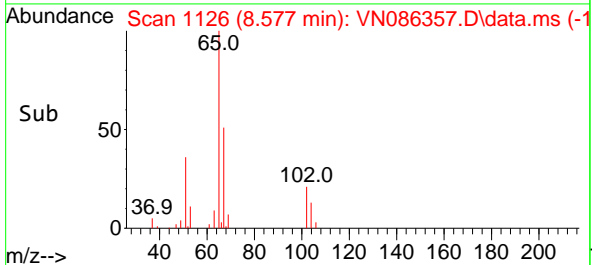
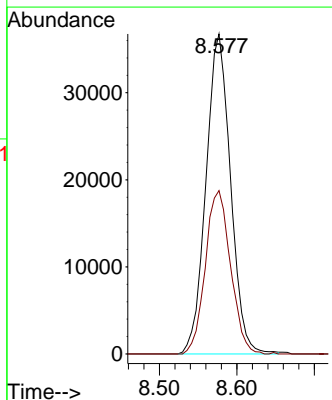
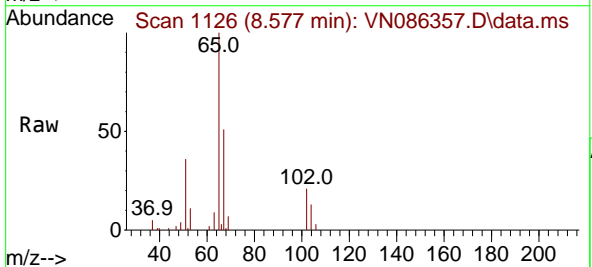


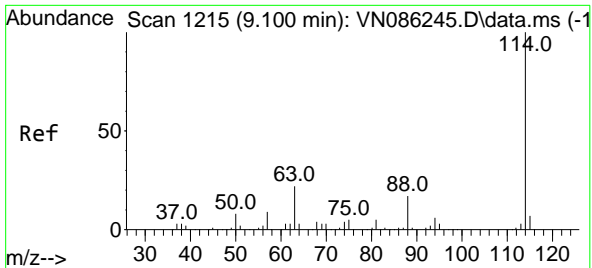
Tgt Ion	Resp	Lower	Upper
128	100		
49	167.9	0.0	452.5
130	126.5	0.0	315.0



#27
 1,2-Dichloroethane-d4
 Concen: 30.025 ug/l
 RT: 8.577 min Scan# 1126
 Delta R.T. 0.000 min
 Lab File: VN086357.D
 Acq: 21 Apr 2025 13:12

Tgt Ion	Resp	Lower	Upper
65	100		
67	52.3	43.4	65.2





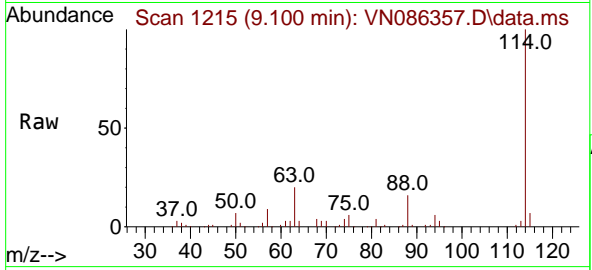
#28
 1,4-Difluorobenzene
 Concen: 30.000 ug/l
 RT: 9.100 min Scan# 11
 Delta R.T. 0.000 min
 Lab File: VN086357.D
 Acq: 21 Apr 2025 13:12

Instrument :

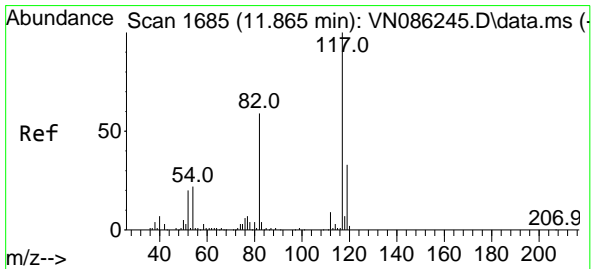
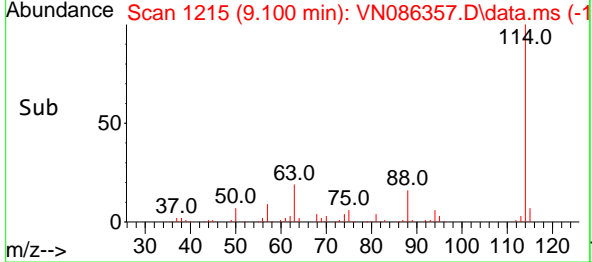
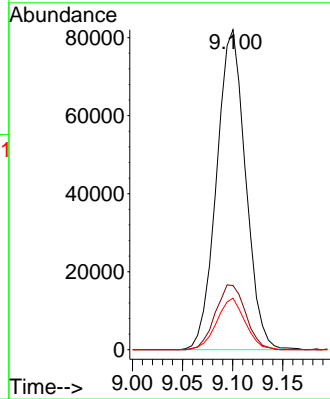
MSVOA_N

ClientSampleId :

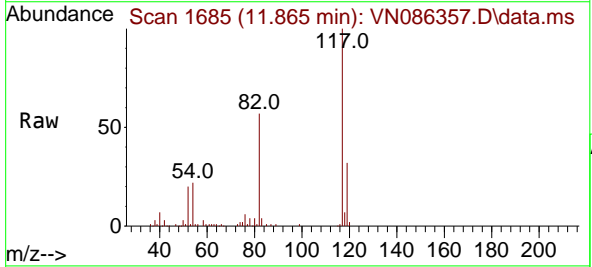
VN0421WBL01



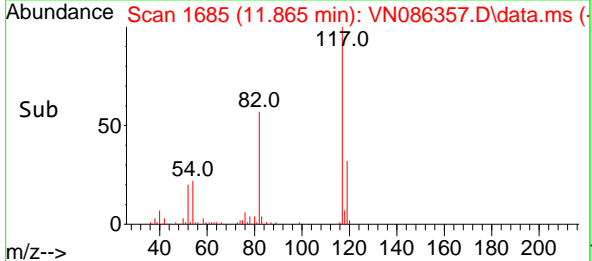
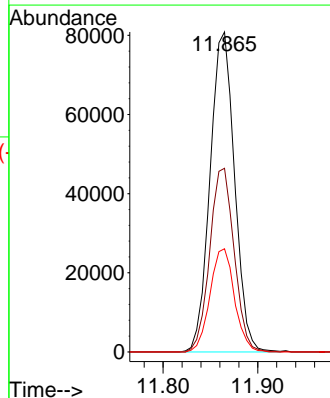
Tgt Ion:114 Resp: 164394
 Ion Ratio Lower Upper
 114 100
 63 21.2 17.8 26.6
 88 15.8 13.4 20.2

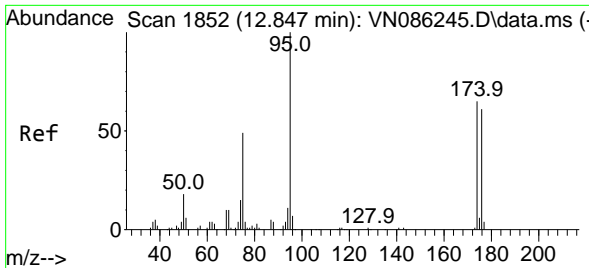


#57
 Chlorobenzene-d5
 Concen: 30.000 ug/l
 RT: 11.865 min Scan# 1685
 Delta R.T. 0.000 min
 Lab File: VN086357.D
 Acq: 21 Apr 2025 13:12



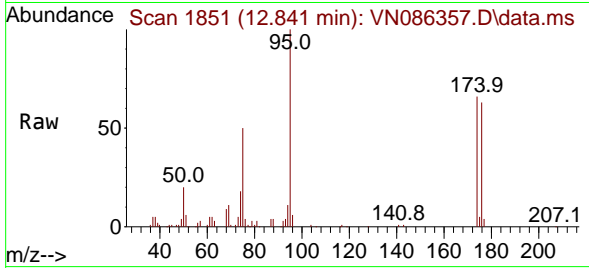
Tgt Ion:117 Resp: 145643
 Ion Ratio Lower Upper
 117 100
 82 57.2 47.3 70.9
 119 32.3 25.9 38.9



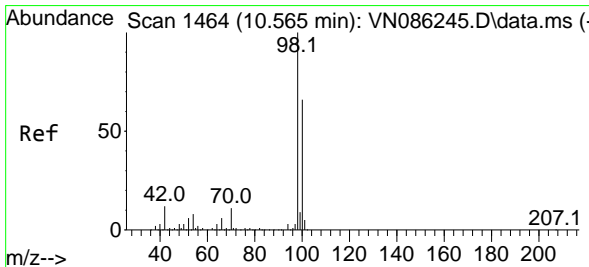
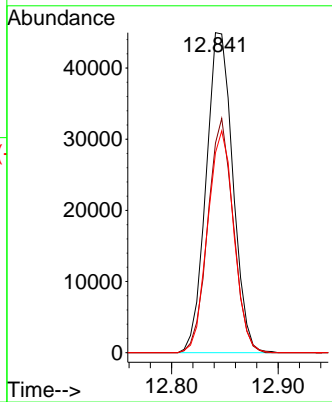
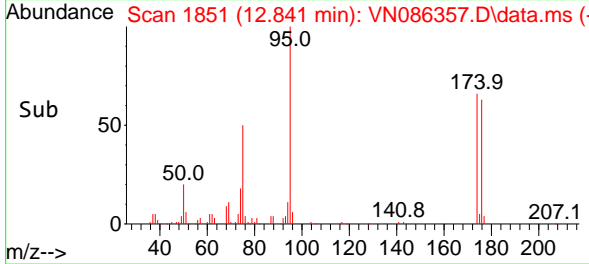


#60
 4-Bromofluorobenzene
 Concen: 27.100 ug/l
 RT: 12.841 min Scan# 1851
 Delta R.T. -0.006 min
 Lab File: VN086357.D
 Acq: 21 Apr 2025 13:12

Instrument :
 MSVOA_N
 ClientSampleId :
 VN0421WBL01



Tgt Ion: 95 Resp: 78582
 Ion Ratio Lower Upper
 95 100
 174 69.4 52.7 79.1
 176 67.9 49.8 74.8



#63
 Toluene-d8
 Concen: 29.225 ug/l
 RT: 10.565 min Scan# 1464
 Delta R.T. 0.000 min
 Lab File: VN086357.D
 Acq: 21 Apr 2025 13:12

Tgt Ion: 98 Resp: 240295
 Ion Ratio Lower Upper
 98 100
 100 65.8 52.3 78.5

