

Data Path : Z:\voasrv\HPCHEM1\MSVOA_N\Data\VN042221\
 Data File : VN066711.D
 Acq On : 22 Apr 2021 13:52
 Operator : JC/MD
 Sample : VN0422WBSD01
 Misc : 5.00mL/MSVOA_N/WATER
 ALS Vial : 7 Sample Multiplier: 1

Instrument :
 MSVOA_N
 ClientSampled :

Quant Time: Apr 23 06:29:24 2021
 Quant Method : Z:\voasrv\HPCHEM1\MSVOA_N\methods\624N042021W.M
 Quant Title : METHOD 624 VOLATILE ORGANIC ANALYSIS
 QLast Update : Wed Apr 21 16:55:39 2021
 Response via : Initial Calibration

Compound	R.T.	QIon	Response	Conc	Units	Dev(Min)
Internal Standards						
1) Bromochloromethane	7.111	128	51151	30.00	ug/l	0.00
28) 1,4-Difluorobenzene	8.516	114	269815	30.00	ug/l	0.00
57) Chlorobenzene-d5	11.348	117	242941	30.00	ug/l	0.00
System Monitoring Compounds						
27) 1,2-Dichloroethane-d4	7.950	65	107509	29.17	ug/l	0.00
Spiked Amount	30.000	Range	91 - 110	Recovery	=	97.23%
60) 4-Bromofluorobenzene	12.343	95	113107	29.70	ug/l	0.00
Spiked Amount	30.000	Range	63 - 112	Recovery	=	99.00%
63) Toluene-d8	10.026	98	342577	30.65	ug/l	0.00
Spiked Amount	30.000	Range	91 - 112	Recovery	=	102.17%
Target Compounds						
						Qvalue
2) Dichlorodifluoromethane	1.835	85	42774	16.98	ug/l	98
3) Chloromethane	2.034	50	66544	16.98	ug/l	100
4) Vinyl Chloride	2.163	62	64114	17.17	ug/l	98
5) Bromomethane	2.519	94	41333	18.83	ug/l	97
6) Chloroethane	2.661	64	39752	17.44	ug/l	99
7) Trichlorofluoromethane	2.973	101	73030	17.56	ug/l	99
8) Diethyl Ether	3.359	74	34437	18.65	ug/l	93
9) 1,1,2-Trichlorotrifluo...	3.699	101	47950	18.18	ug/l	98
10) 1,1-Dichloroethene	3.675	96	46346	17.43	ug/l	92
11) Methyl Iodide	3.884	142	72049	17.90	ug/l	95
12) Methyl Acetate	4.246	43	65553	18.09	ug/l	98
13) Acrolein	3.546	56	50877	99.26	ug/l	99
14) Acrylonitrile	4.893	53	139862	87.82	ug/l	99
15) Acetone	3.750	58	37030	88.59	ug/l	84
16) Carbon Disulfide	3.984	76	140189	17.10	ug/l	97
17) Allyl chloride	4.244	41	93653	17.77	ug/l	92
18) Methylene Chloride	4.469	84	62438	18.36	ug/l	97
19) trans-1,2-Dichloroethene	4.952	96	53450	17.76	ug/l	98
20) Diisopropyl ether	5.861	45	200819	18.12	ug/l	96
21) 1,1-Dichloroethane	5.756	63	107483	18.04	ug/l	100
22) cis-1,2-Dichloroethene	6.738	96	64326	18.43	ug/l	97
23) tert-Butyl Alcohol	4.700	59	45930	84.73	ug/l #	100
24) Methyl tert-Butyl Ether	4.949	73	174394	18.81	ug/l	95
25) Chloroform	7.288	83	103467	18.13	ug/l	97
26) Cyclohexane	7.575	56	90502	17.66	ug/l #	99
29) 1,1-Dichloropropene	7.717	75	74380	17.51	ug/l	99
30) 2-Butanone	6.743	43	177348	86.47	ug/l	99
31) 2,2-Dichloropropane	6.730	77	85241	17.41	ug/l	97
32) 1,1,1-Trichloroethane	7.492	97	83140	17.33	ug/l	98
33) Carbon Tetrachloride	7.695	117	70327	17.36	ug/l	97
34) Benzene	7.966	78	242888	17.74	ug/l	98
35) Methacrylonitrile	7.087	41	31447	15.93	ug/l	99
36) 1,2-Dichloroethane	8.050	62	79138	17.60	ug/l	98
37) Trichloroethene	8.766	130	58963	18.11	ug/l	98
38) Methylcyclohexane	9.012	83	90334	17.83	ug/l	98
39) 1,2-Dichloropropane	9.050	63	67068	17.94	ug/l	99
40) Dibromomethane	9.144	93	40210	17.94	ug/l	99
41) Bromodichloromethane	9.337	83	83699	17.79	ug/l	98
42) Vinyl Acetate	5.802	43	819907	89.19	ug/l	100

Data Path : Z:\voasrv\HPCHEM1\MSVOA_N\Data\VN042221\
 Data File : VN066711.D
 Acq On : 22 Apr 2021 13:52
 Operator : JC/MD
 Sample : VN0422WBSD01
 Misc : 5.00mL/MSVOA_N/WATER
 ALS Vial : 7 Sample Multiplier: 1

Instrument :
 MSVOA_N
 ClientSampled :

Quant Time: Apr 23 06:29:24 2021
 Quant Method : Z:\voasrv\HPCHEM1\MSVOA_N\methods\624N042021W.M
 Quant Title : METHOD 624 VOLATILE ORGANIC ANALYSIS
 QLast Update : Wed Apr 21 16:55:39 2021
 Response via : Initial Calibration

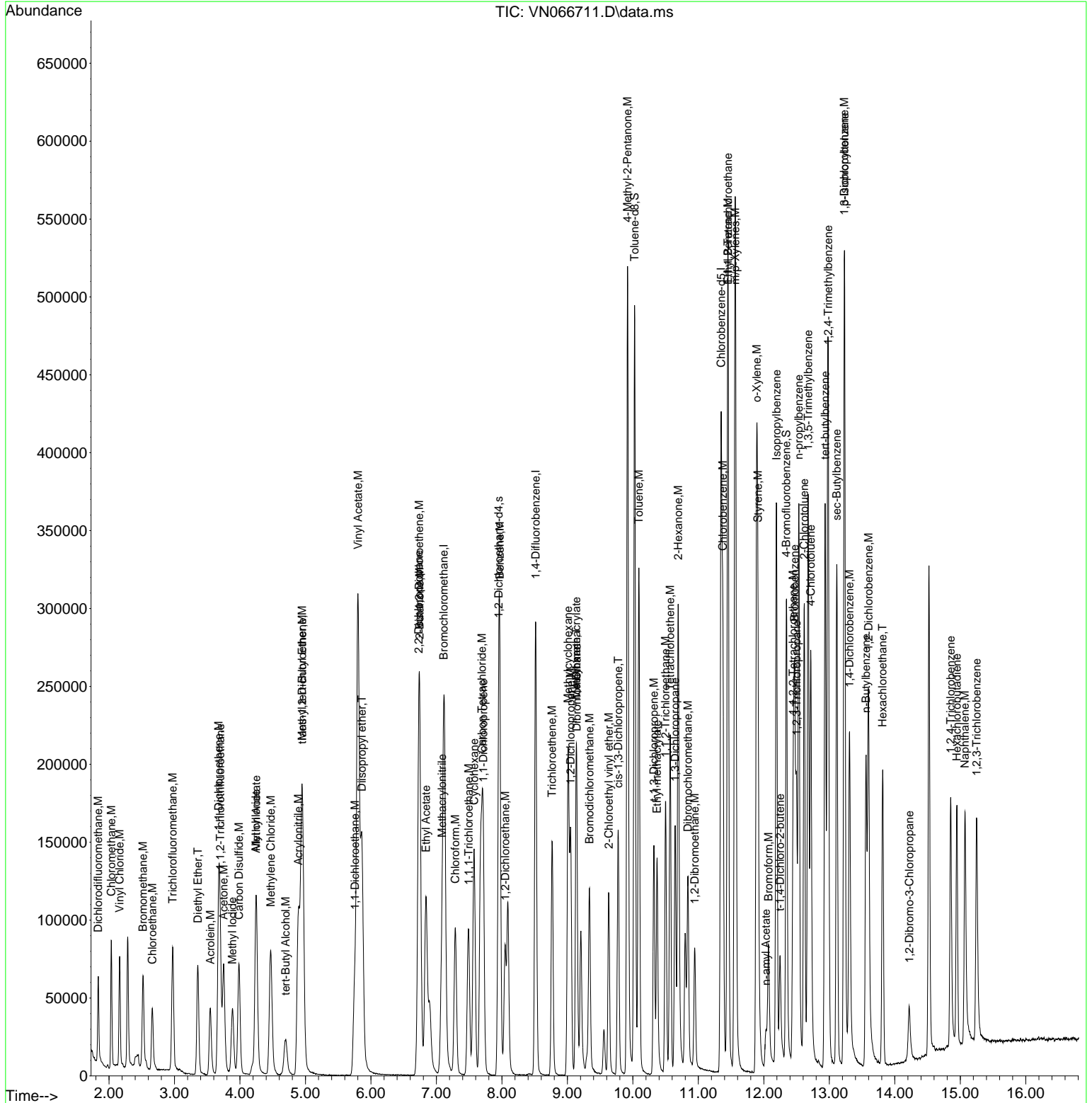
Compound	R.T.	QIon	Response	Conc	Units	Dev(Min)
43) Ethyl Acetate	6.840	43	77700	17.23	ug/l #	82
45) 1,4-Dioxane	9.136	88	16733	305.68	ug/l	95
46) Methyl methacrylate	9.136	41	58231	16.94	ug/l	91
47) n-amyl Acetate	12.032	43	22278	5.37	ug/l	96
48) t-1,3-Dichloropropene	10.321	75	88239	17.16	ug/l	100
49) cis-1,3-Dichloropropene	9.777	75	101963	17.95	ug/l #	88
50) 1,1,2-Trichloroethane	10.498	97	58917	17.88	ug/l	98
51) Ethyl methacrylate	10.369	69	78318	16.83	ug/l	91
52) 1,3-Dichloropropane	10.646	76	98984	17.65	ug/l	99
53) Dibromochloromethane	10.841	129	62922	17.66	ug/l	99
54) 1,2-Dibromoethane	10.943	107	57957	17.54	ug/l	99
55) 2-Chloroethyl vinyl ether	9.632	63	55594	78.12	ug/l	99
56) Bromoform	12.072	173	43200	16.82	ug/l #	99
58) 4-Methyl-2-Pentanone	9.919	43	381015	92.09	ug/l	99
59) 2-Hexanone	10.691	43	224319	84.33	ug/l	97
61) Tetrachloroethene	10.571	164	53641	20.00	ug/l	96
62) Toluene	10.090	91	255054	18.50	ug/l	99
64) Chlorobenzene	11.372	112	151233	18.33	ug/l	99
65) 1,1,1,2-Tetrachloroethane	11.450	131	58745	18.97	ug/l	99
66) Ethyl Benzene	11.453	91	265155	18.00	ug/l	99
67) m/p-Xylenes	11.563	106	199885	36.14	ug/l	98
68) o-Xylene	11.890	106	97941	18.26	ug/l	100
69) Styrene	11.909	104	151304	17.55	ug/l	99
70) Isopropylbenzene	12.193	105	253371	18.08	ug/l	99
71) 1,1,2,2-Tetrachloroethane	12.448	83	84828	18.33	ug/l	96
72) 1,2,3-Trichloropropane	12.499	75	92240	22.90	ug/l	87
73) Bromobenzene	12.469	156	65218	18.40	ug/l	98
74) n-propylbenzene	12.534	91	289834	17.82	ug/l	99
75) 2-Chlorotoluene	12.617	91	178804	18.37	ug/l	100
76) 1,3,5-Trimethylbenzene	12.676	105	214429	18.09	ug/l	100
77) t-1,4-Dichloro-2-butene	12.247	75	20237	15.91	ug/l	87
78) 4-Chlorotoluene	12.716	91	173290	18.15	ug/l	98
79) tert-butylbenzene	12.936	119	179785	18.12	ug/l	98
80) 1,2,4-Trimethylbenzene	12.984	105	202288	17.80	ug/l	99
81) sec-Butylbenzene	13.113	105	233657	17.70	ug/l	99
82) p-Isopropyltoluene	13.231	119	201310	17.83	ug/l	98
83) 1,3-Dichlorobenzene	13.228	146	108522	18.44	ug/l	99
84) 1,4-Dichlorobenzene	13.309	146	108766	19.14	ug/l	92
85) n-Butylbenzene	13.558	91	157332	16.76	ug/l	98
86) Hexachloroethane	13.813	117	40949	17.22	ug/l	95
87) 1,2-Dichlorobenzene	13.599	146	109751	18.99	ug/l	99
88) 1,2-Dibromo-3-Chloropr...	14.221	75	13865	17.44	ug/l	95
89) 1,2,4-Trichlorobenzene	14.854	180	62596	18.74	ug/l	96
90) Hexachlorobutadiene	14.948	225	34392	18.38	ug/l	99
91) Naphthalene	15.071	128	154601	19.25	ug/l	100
92) 1,2,3-Trichlorobenzene	15.251	180	61606	19.50	ug/l	99

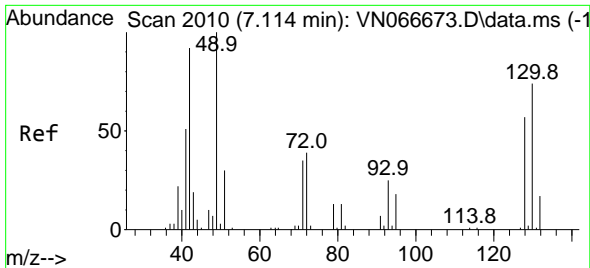
(#) = qualifier out of range (m) = manual integration (+) = signals summed

Data Path : Z:\voasrv\HPCHEM1\MSVOA_N\Data\VN042221\
 Data File : VN066711.D
 Acq On : 22 Apr 2021 13:52
 Operator : JC/MD
 Sample : VN0422WBSD01
 Misc : 5.00mL/MSVOA_N/WATER
 ALS Vial : 7 Sample Multiplier: 1

Instrument :
 MSVOA_N
 Client Sampled :

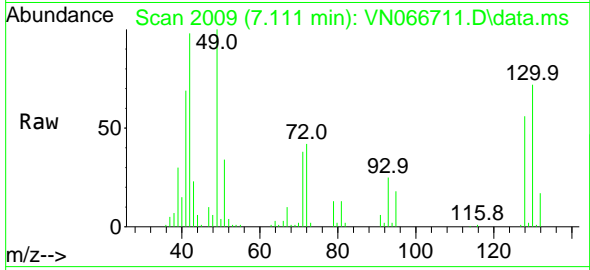
Quant Time: Apr 23 06:29:24 2021
 Quant Method : Z:\voasrv\HPCHEM1\MSVOA_N\methods\624N042021W.M
 Quant Title : METHOD 624 VOLATILE ORGANIC ANALYSIS
 QLast Update : Wed Apr 21 16:55:39 2021
 Response via : Initial Calibration



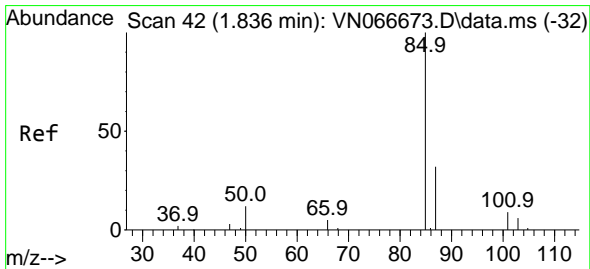
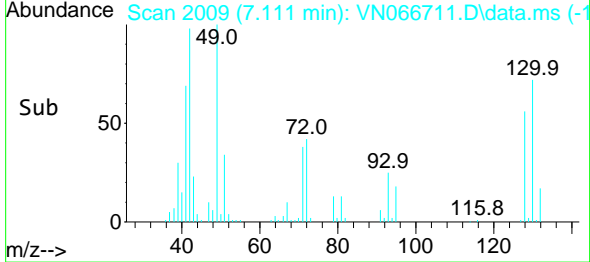
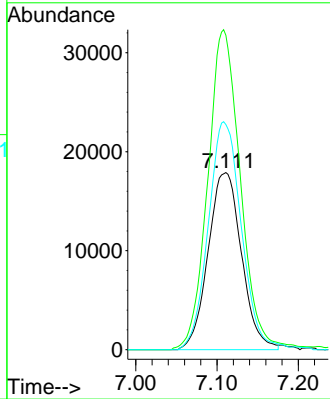


#1
 Bromochloromethane
 Concen: 30.00 ug/l
 RT: 7.111 min Scan# 2009
 Delta R.T. -0.003 min
 Lab File: VN066711.D
 Acq: 22 Apr 2021 13:52

Instrument :
 MSVOA_N
 ClientSampled :

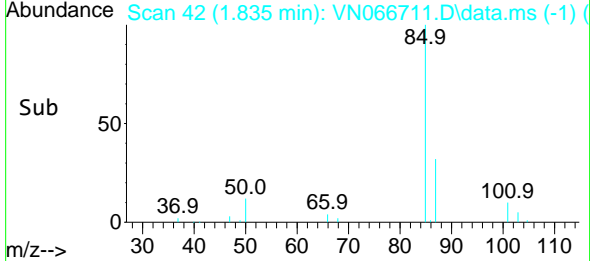
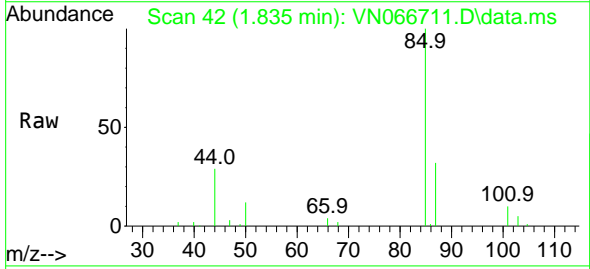
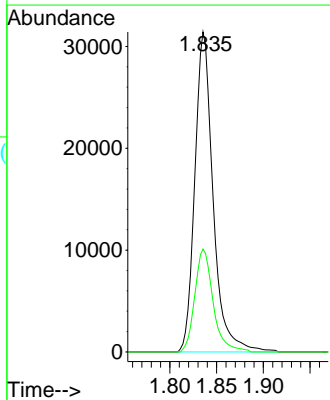


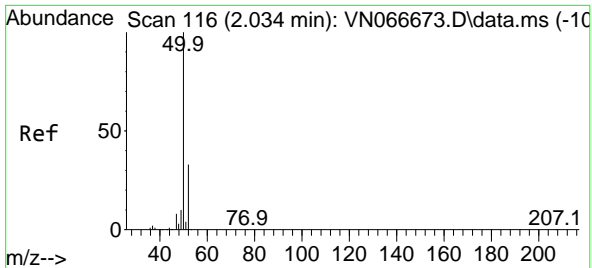
Tgt Ion:128 Resp: 51151
 Ion Ratio Lower Upper
 128 100
 49 176.3 0.0 429.3
 130 127.6 0.0 328.5



#2
 Dichlorodifluoromethane
 Concen: 16.98 ug/l
 RT: 1.835 min Scan# 42
 Delta R.T. -0.001 min
 Lab File: VN066711.D
 Acq: 22 Apr 2021 13:52

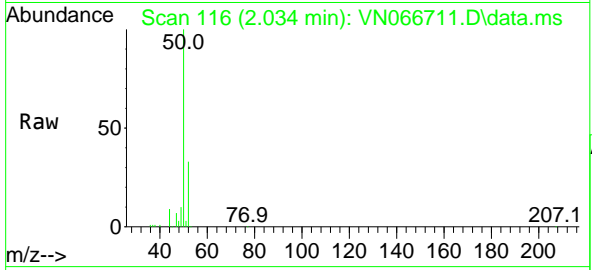
Tgt Ion: 85 Resp: 42774
 Ion Ratio Lower Upper
 85 100
 87 32.2 15.4 46.4



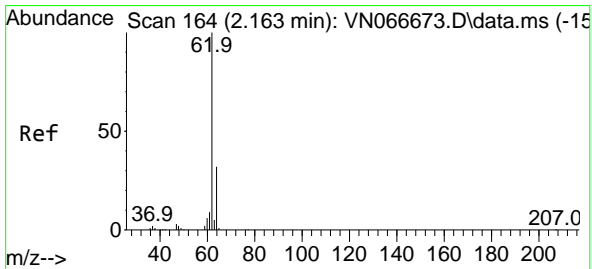
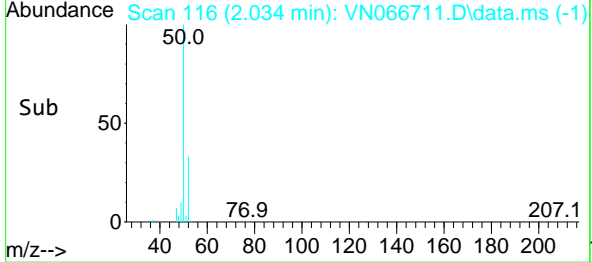
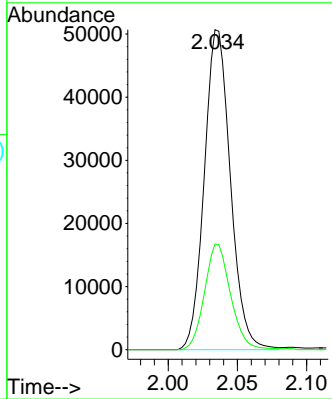


#3
 Chloromethane
 Concen: 16.98 ug/l
 RT: 2.034 min Scan# 116
 Delta R.T. -0.000 min
 Lab File: VN066711.D
 Acq: 22 Apr 2021 13:52

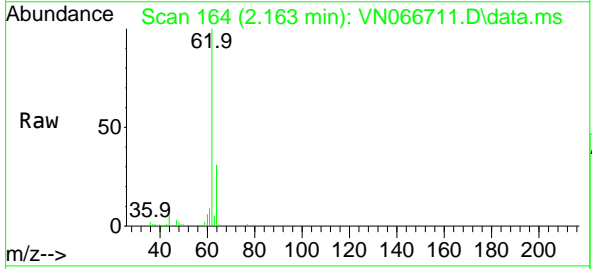
Instrument :
 MSVOA_N
 ClientSampled :



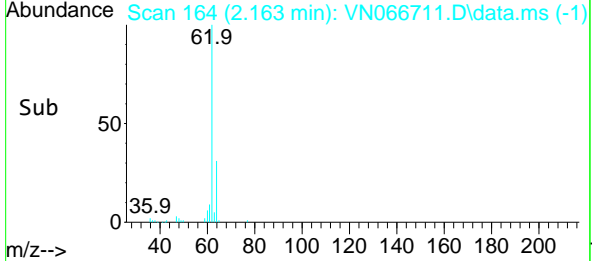
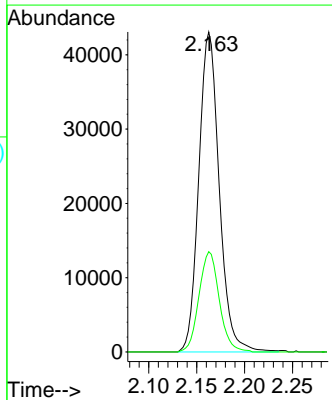
Tgt Ion: 50 Resp: 66544
 Ion Ratio Lower Upper
 50 100
 52 33.0 26.2 39.4

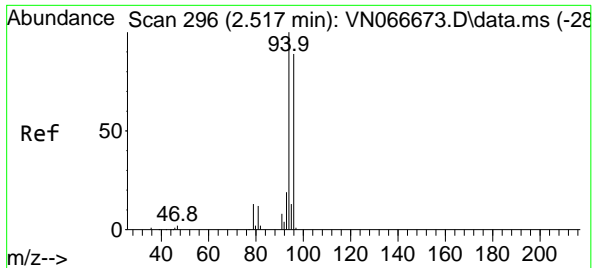


#4
 Vinyl Chloride
 Concen: 17.17 ug/l
 RT: 2.163 min Scan# 164
 Delta R.T. -0.000 min
 Lab File: VN066711.D
 Acq: 22 Apr 2021 13:52



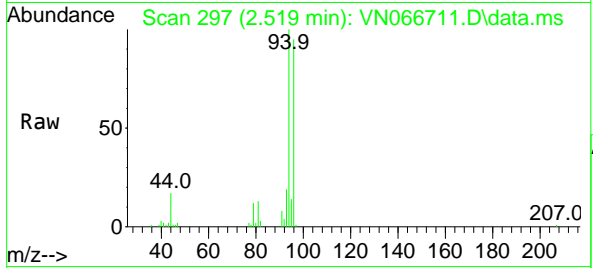
Tgt Ion: 62 Resp: 64114
 Ion Ratio Lower Upper
 62 100
 64 31.4 25.8 38.6



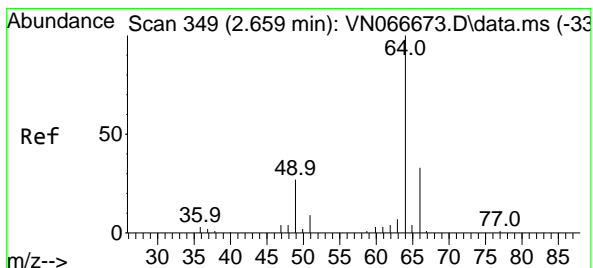
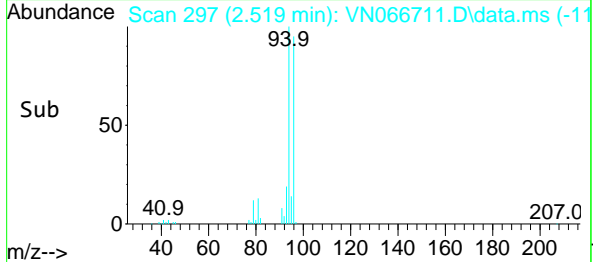
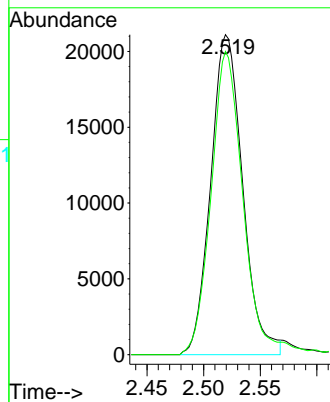


#5
 Bromomethane
 Concen: 18.83 ug/l
 RT: 2.519 min Scan# 297
 Delta R.T. 0.002 min
 Lab File: VN066711.D
 Acq: 22 Apr 2021 13:52

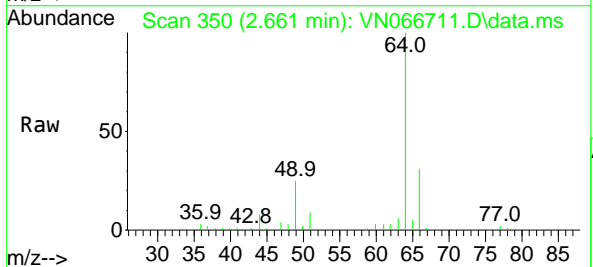
Instrument :
 MSVOA_N
 ClientSampled :



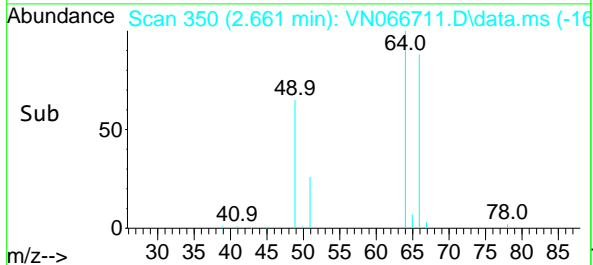
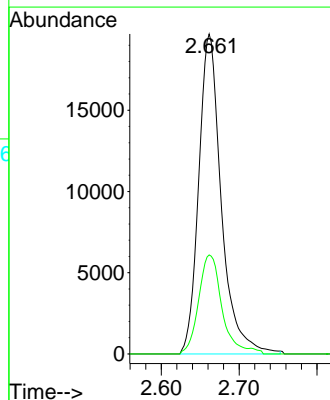
Tgt Ion: 94 Resp: 41333
 Ion Ratio Lower Upper
 94 100
 96 94.8 77.8 116.8

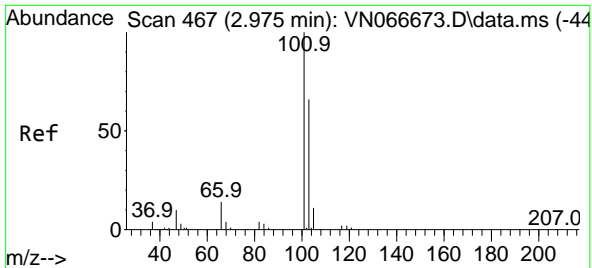


#6
 Chloroethane
 Concen: 17.44 ug/l
 RT: 2.661 min Scan# 350
 Delta R.T. 0.002 min
 Lab File: VN066711.D
 Acq: 22 Apr 2021 13:52



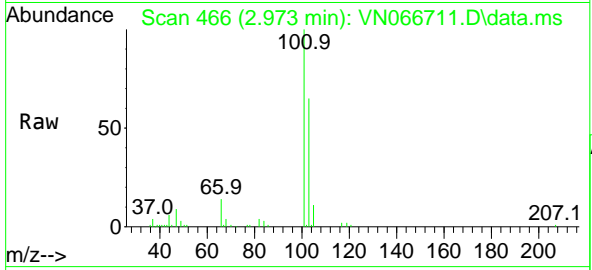
Tgt Ion: 64 Resp: 39752
 Ion Ratio Lower Upper
 64 100
 66 30.9 24.2 36.4



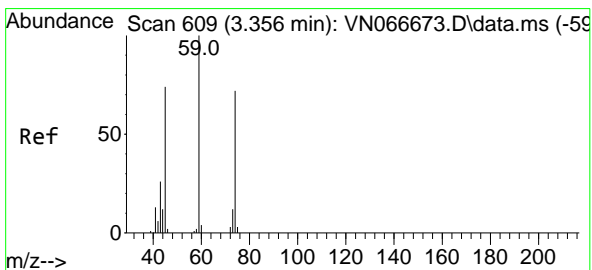
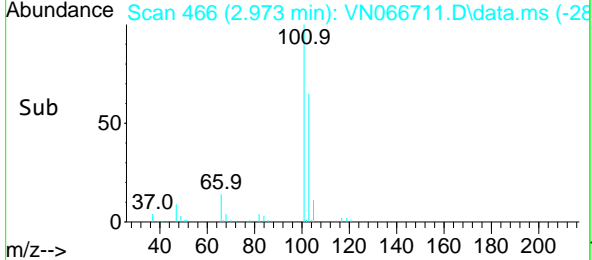
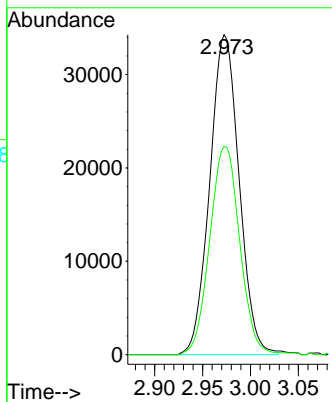


#7
 Trichlorofluoromethane
 Concen: 17.56 ug/l
 RT: 2.973 min Scan# 466
 Delta R.T. -0.002 min
 Lab File: VN066711.D
 Acq: 22 Apr 2021 13:52

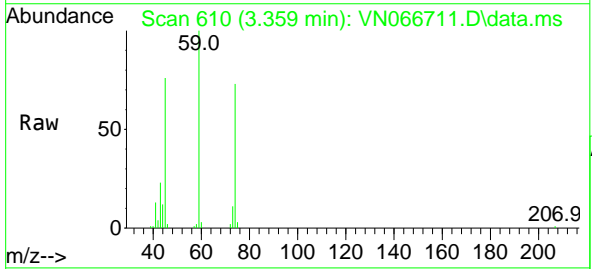
Instrument :
 MSVOA_N
 ClientSampled :



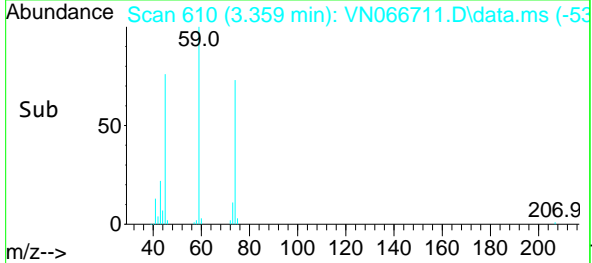
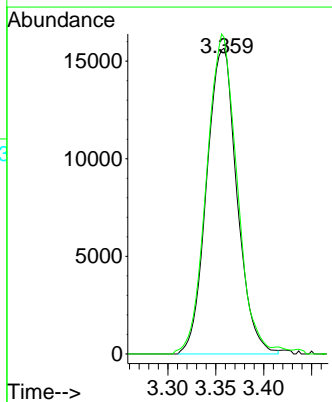
Tgt Ion:101 Resp: 73030
 Ion Ratio Lower Upper
 101 100
 103 65.1 51.6 77.4

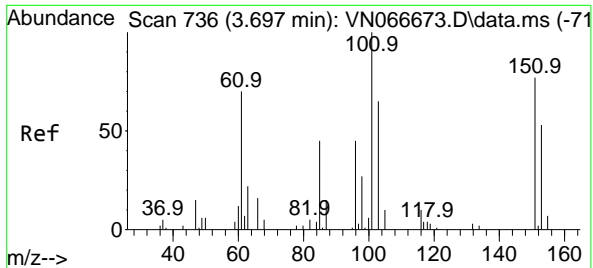


#8
 Diethyl Ether
 Concen: 18.65 ug/l
 RT: 3.359 min Scan# 610
 Delta R.T. 0.003 min
 Lab File: VN066711.D
 Acq: 22 Apr 2021 13:52



Tgt Ion: 74 Resp: 34437
 Ion Ratio Lower Upper
 74 100
 45 104.9 19.6 176.4



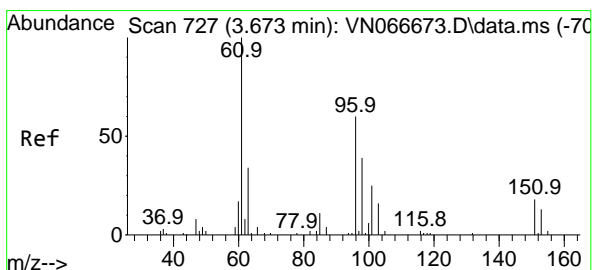
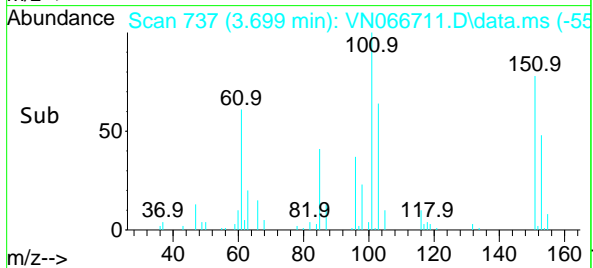
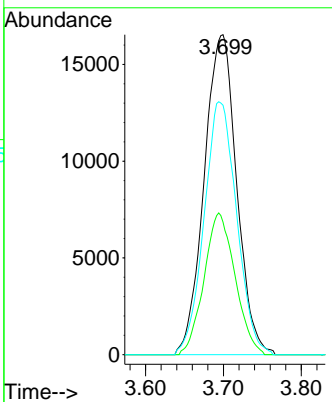
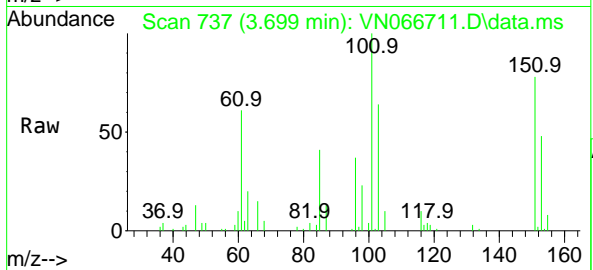


#9
 1,1,2-Trichlorotrifluoroethane
 Concen: 18.18 ug/l
 RT: 3.699 min Scan# 737
 Delta R.T. 0.002 min
 Lab File: VN066711.D
 Acq: 22 Apr 2021 13:52

Instrument :
 MSVOA_N
 ClientSampled :

Tgt Ion:101 Resp: 47950

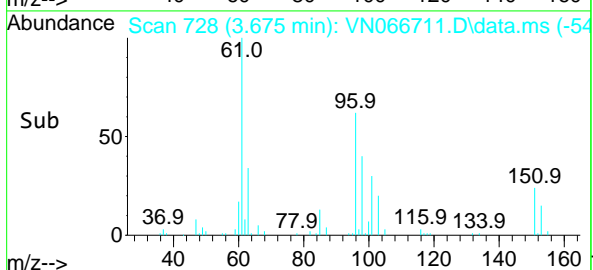
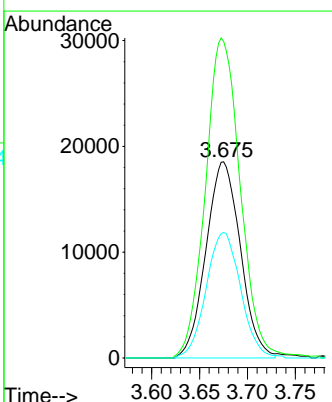
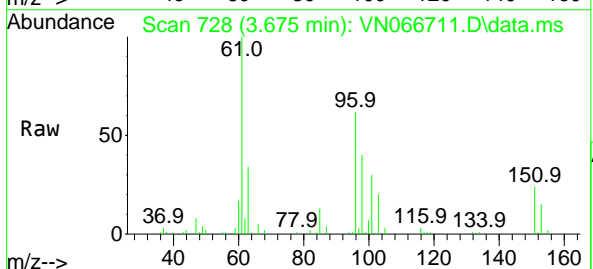
Ion	Ratio	Lower	Upper
101	100		
85	42.2	0.0	90.6
151	79.4	0.0	159.0

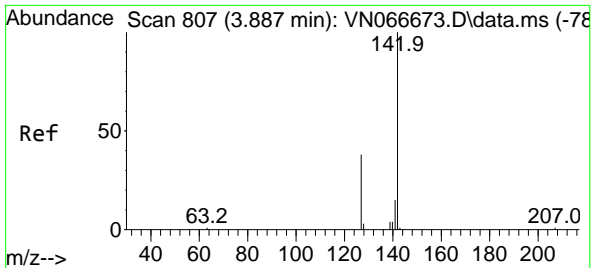


#10
 1,1-Dichloroethene
 Concen: 17.43 ug/l
 RT: 3.675 min Scan# 728
 Delta R.T. 0.002 min
 Lab File: VN066711.D
 Acq: 22 Apr 2021 13:52

Tgt Ion: 96 Resp: 46346

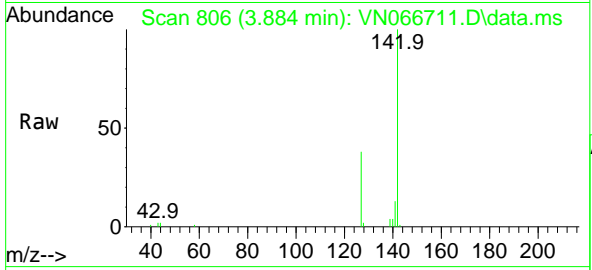
Ion	Ratio	Lower	Upper
96	100		
61	160.3	139.6	209.4
98	64.0	53.7	80.5





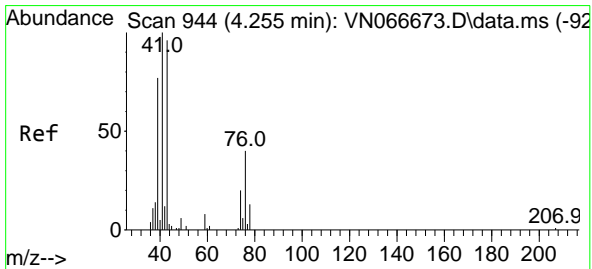
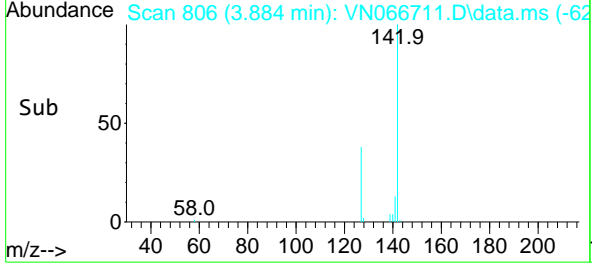
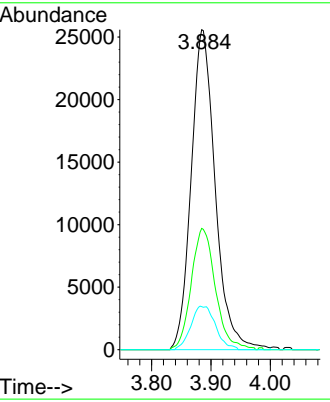
#11
 Methyl Iodide
 Concen: 17.90 ug/l
 RT: 3.884 min Scan# 806
 Delta R.T. -0.003 min
 Lab File: VN066711.D
 Acq: 22 Apr 2021 13:52

Instrument :
 MSVOA_N
 ClientSampled :

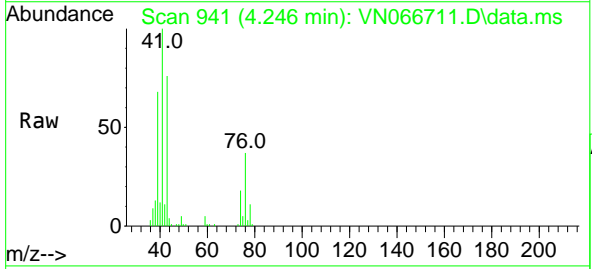


Tgt Ion: 142 Resp: 72049

Ion	Ratio	Lower	Upper
142	100		
127	38.0	20.5	61.6
141	13.5	7.4	22.3

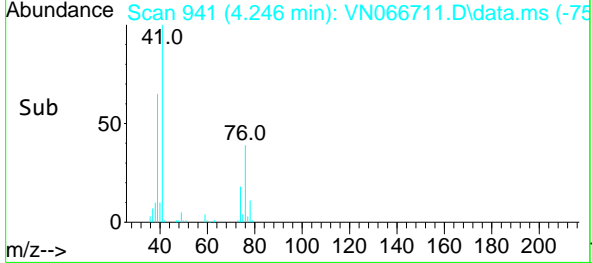
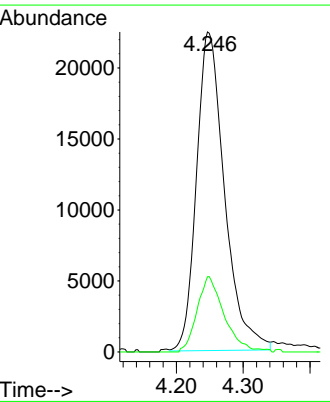


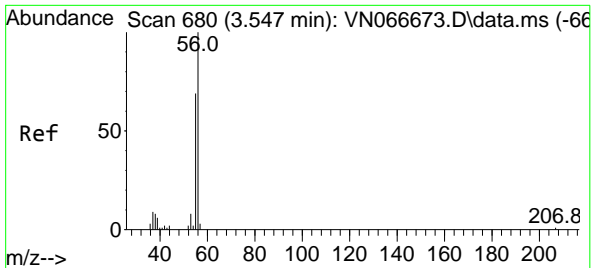
#12
 Methyl Acetate
 Concen: 18.09 ug/l
 RT: 4.246 min Scan# 941
 Delta R.T. -0.009 min
 Lab File: VN066711.D
 Acq: 22 Apr 2021 13:52



Tgt Ion: 43 Resp: 65553

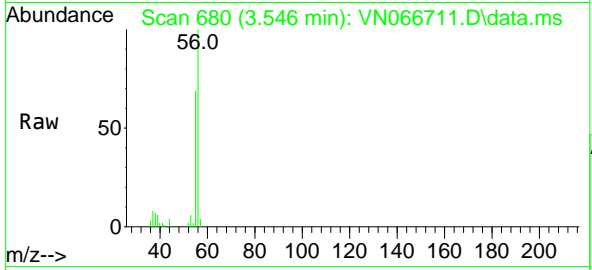
Ion	Ratio	Lower	Upper
43	100		
74	23.6	18.0	27.0



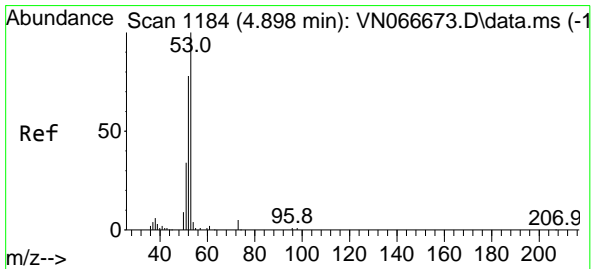
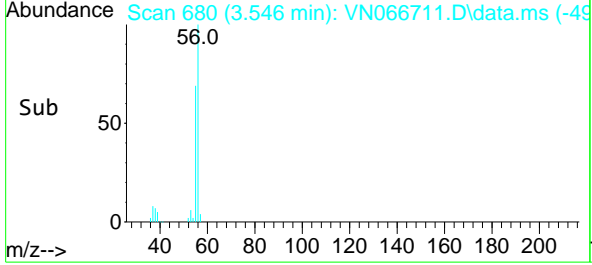
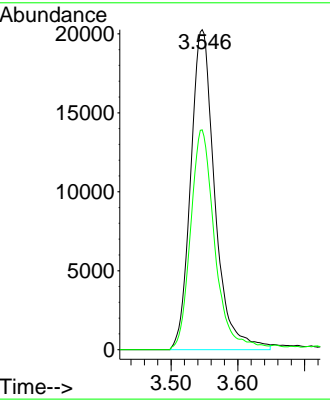


#13
 Acrolein
 Concen: 99.26 ug/l
 RT: 3.546 min Scan# 680
 Delta R.T. -0.001 min
 Lab File: VN066711.D
 Acq: 22 Apr 2021 13:52

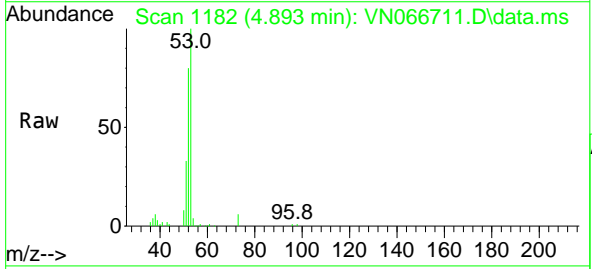
Instrument :
 MSVOA_N
 ClientSampled :



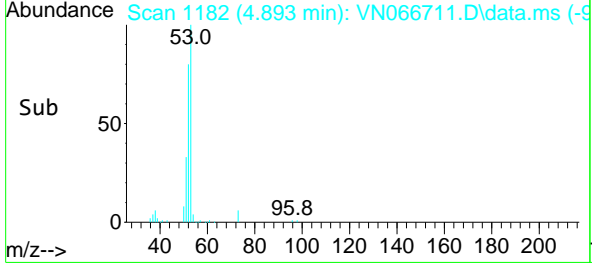
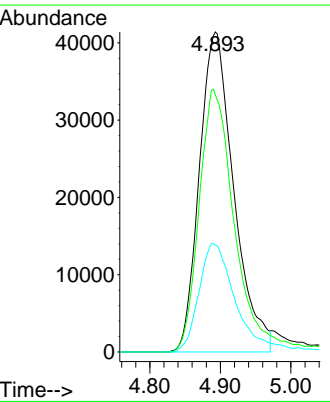
Tgt Ion: 56 Resp: 50877
 Ion Ratio Lower Upper
 56 100
 55 66.8 54.1 81.1

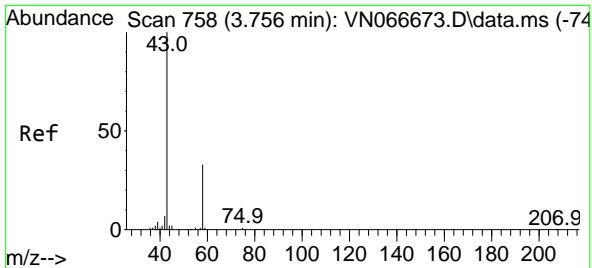


#14
 Acrylonitrile
 Concen: 87.82 ug/l
 RT: 4.893 min Scan# 1182
 Delta R.T. -0.005 min
 Lab File: VN066711.D
 Acq: 22 Apr 2021 13:52



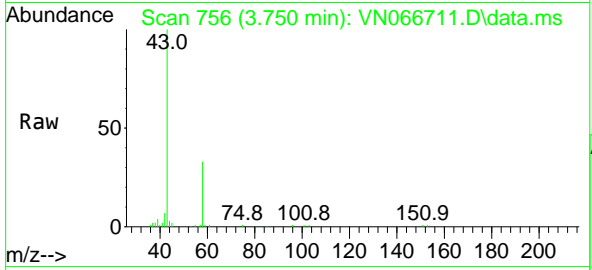
Tgt Ion: 53 Resp: 139862
 Ion Ratio Lower Upper
 53 100
 52 83.3 41.0 123.0
 51 36.0 17.8 53.4



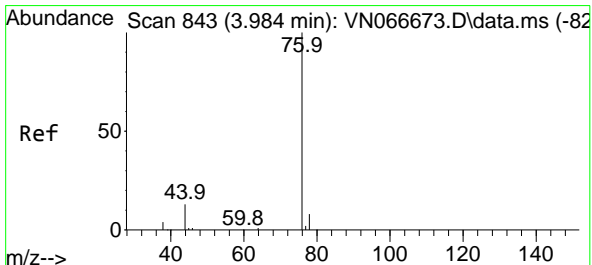
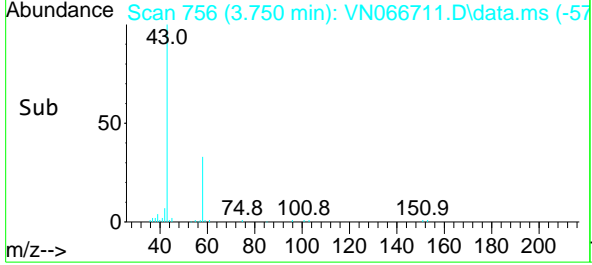
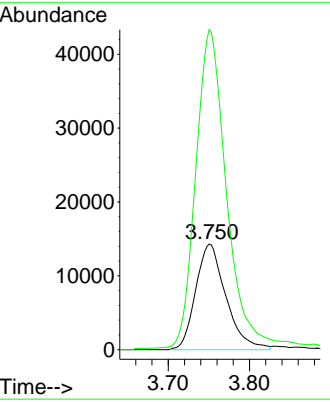


#15
 Acetone
 Concen: 88.59 ug/l
 RT: 3.750 min Scan# 756
 Delta R.T. -0.006 min
 Lab File: VN066711.D
 Acq: 22 Apr 2021 13:52

Instrument :
 MSVOA_N
 ClientSampled :

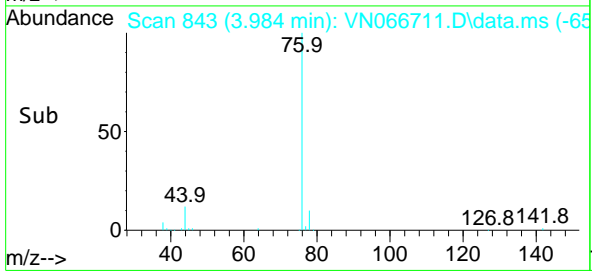
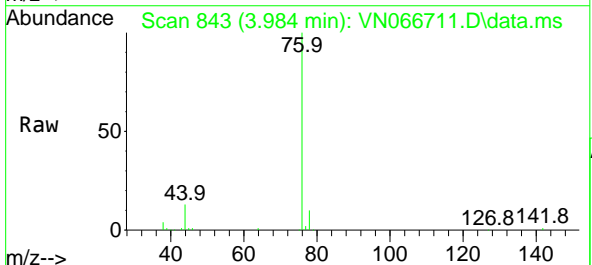
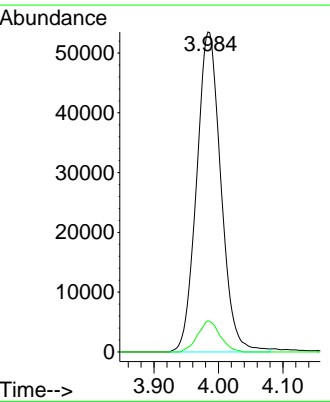


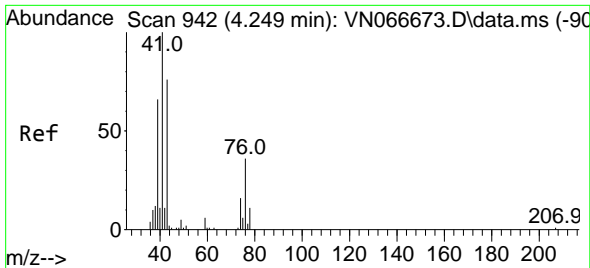
Tgt Ion: 58 Resp: 37030
 Ion Ratio Lower Upper
 58 100
 43 299.7 267.3 400.9



#16
 Carbon Disulfide
 Concen: 17.10 ug/l
 RT: 3.984 min Scan# 843
 Delta R.T. -0.000 min
 Lab File: VN066711.D
 Acq: 22 Apr 2021 13:52

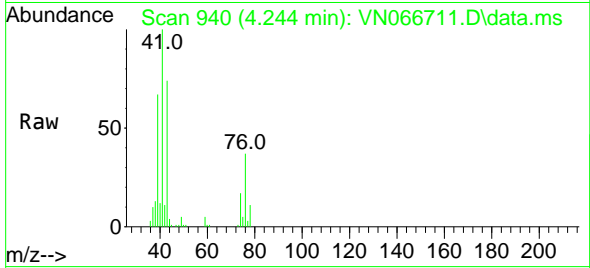
Tgt Ion: 76 Resp: 140189
 Ion Ratio Lower Upper
 76 100
 78 9.8 7.0 10.6



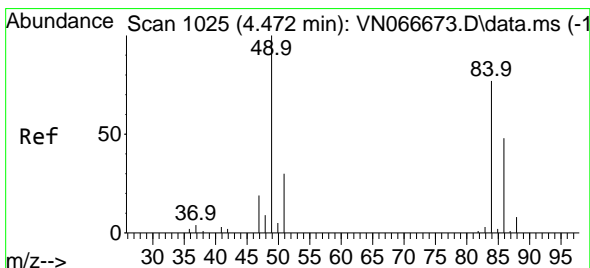
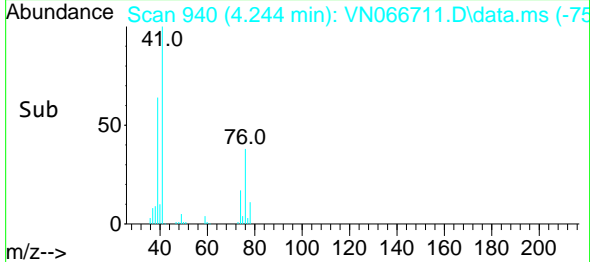
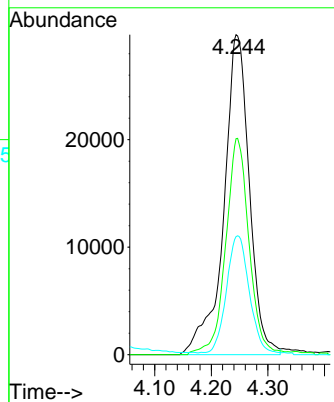


#17
 Allyl chloride
 Concen: 17.77 ug/l
 RT: 4.244 min Scan# 940
 Delta R.T. -0.005 min
 Lab File: VN066711.D
 Acq: 22 Apr 2021 13:52

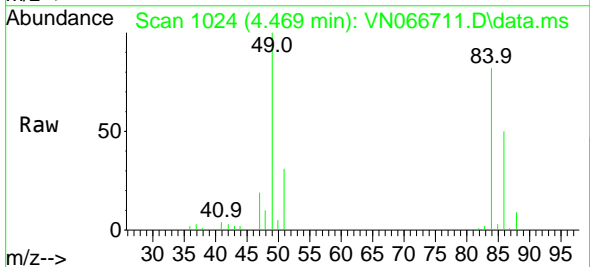
Instrument :
 MSVOA_N
 ClientSampled :



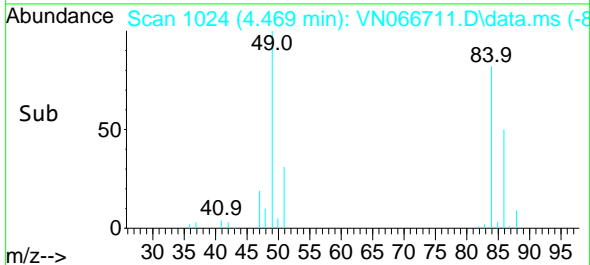
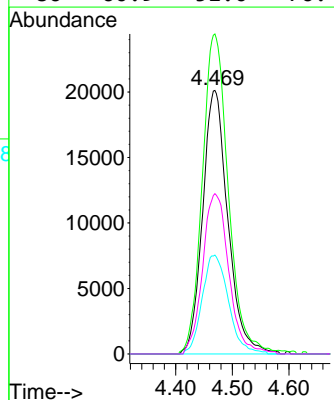
Tgt Ion	Resp	Lower	Upper
41	100		
39	67.5	38.6	116.0
76	36.2	17.6	52.8

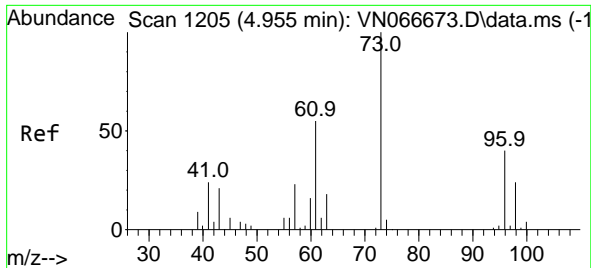


#18
 Methylene Chloride
 Concen: 18.36 ug/l
 RT: 4.469 min Scan# 1024
 Delta R.T. -0.003 min
 Lab File: VN066711.D
 Acq: 22 Apr 2021 13:52



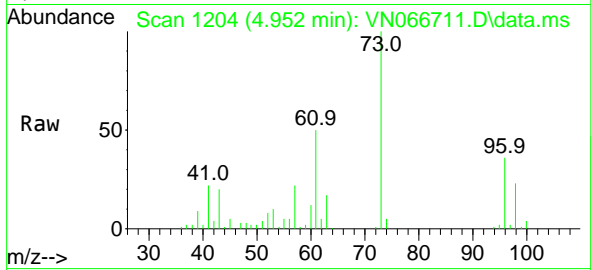
Tgt Ion	Resp	Lower	Upper
84	100		
49	120.5	98.9	148.3
51	37.5	30.8	46.2
86	60.9	51.0	76.4





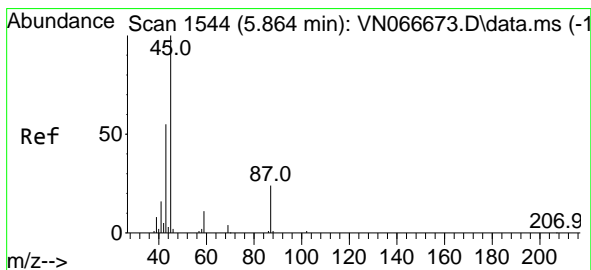
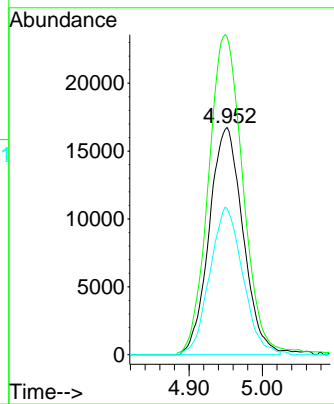
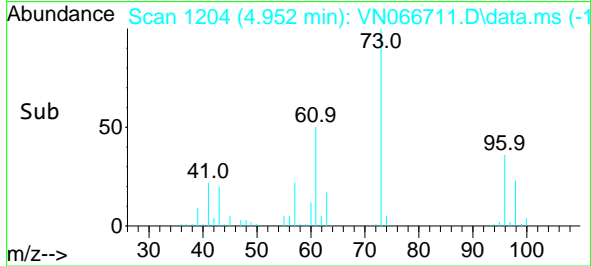
#19
 trans-1,2-Dichloroethene
 Concen: 17.76 ug/l
 RT: 4.952 min Scan# 1204
 Delta R.T. -0.003 min
 Lab File: VN066711.D
 Acq: 22 Apr 2021 13:52

Instrument :
 MSVOA_N
 ClientSampled :

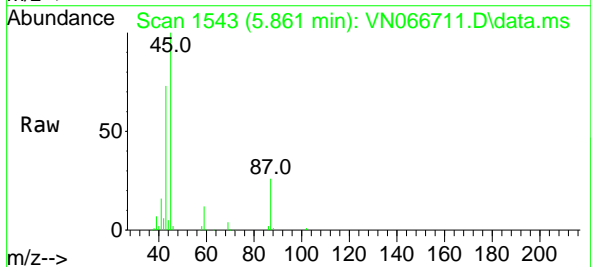


Tgt Ion: 96 Resp: 53450

Ion	Ratio	Lower	Upper
96	100		
61	138.8	113.3	169.9
98	64.3	51.4	77.2

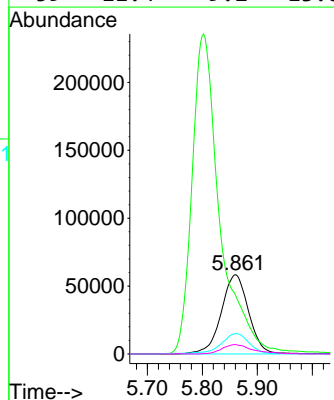
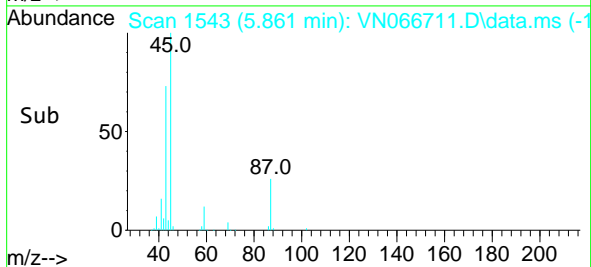


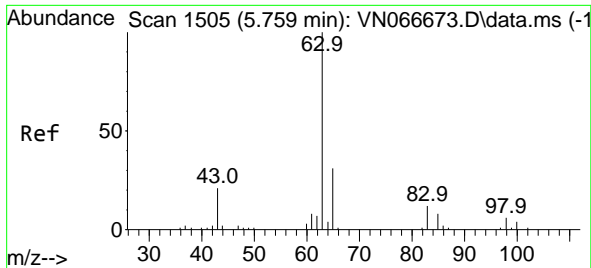
#20
 Diisopropyl ether
 Concen: 18.12 ug/l
 RT: 5.861 min Scan# 1543
 Delta R.T. -0.003 min
 Lab File: VN066711.D
 Acq: 22 Apr 2021 13:52



Tgt Ion: 45 Resp: 200819

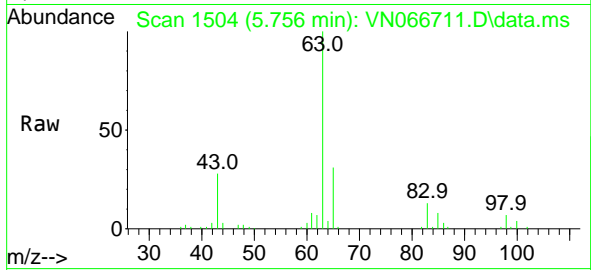
Ion	Ratio	Lower	Upper
45	100		
43	68.0	51.4	77.2
87	25.2	21.4	32.0
59	11.4	9.2	13.8



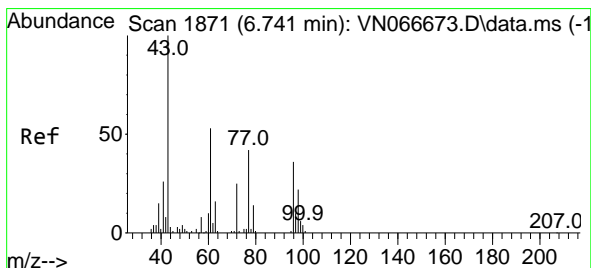
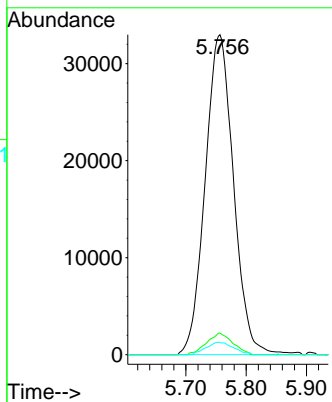
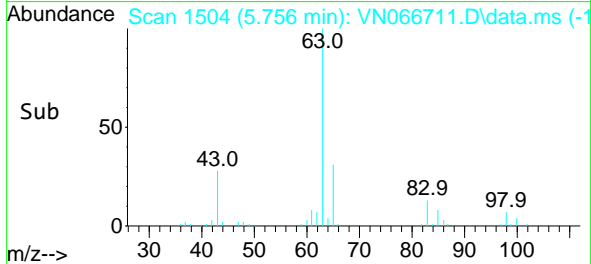


#21
 1,1-Dichloroethane
 Concen: 18.04 ug/l
 RT: 5.756 min Scan# 1504
 Delta R.T. -0.003 min
 Lab File: VN066711.D
 Acq: 22 Apr 2021 13:52

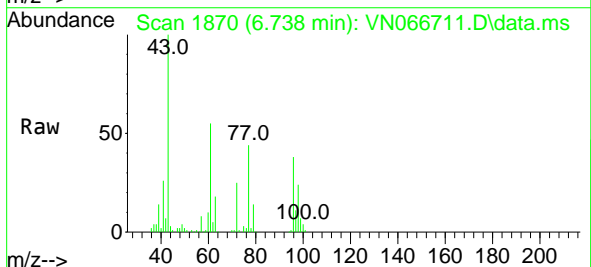
Instrument :
 MSVOA_N
 ClientSampled :



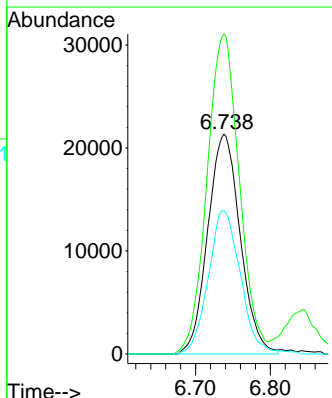
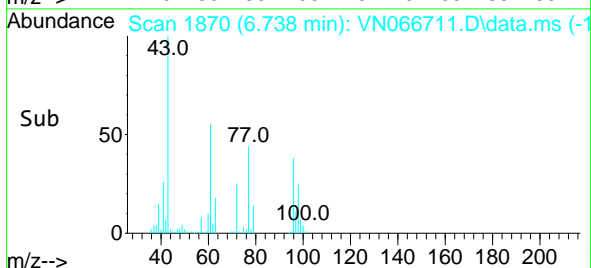
Tgt Ion: 63 Resp: 107483
 Ion Ratio Lower Upper
 63 100
 98 6.8 3.3 9.9
 100 3.8 1.9 5.7

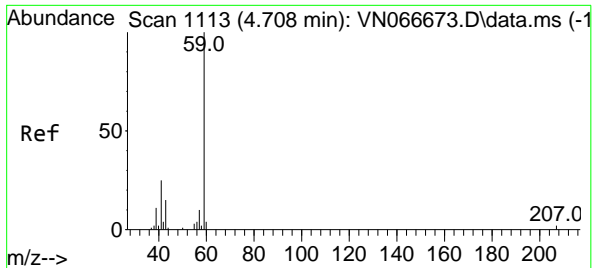


#22
 cis-1,2-Dichloroethene
 Concen: 18.43 ug/l
 RT: 6.738 min Scan# 1870
 Delta R.T. -0.003 min
 Lab File: VN066711.D
 Acq: 22 Apr 2021 13:52



Tgt Ion: 96 Resp: 64326
 Ion Ratio Lower Upper
 96 100
 61 144.8 119.4 179.0
 98 64.7 51.5 77.3

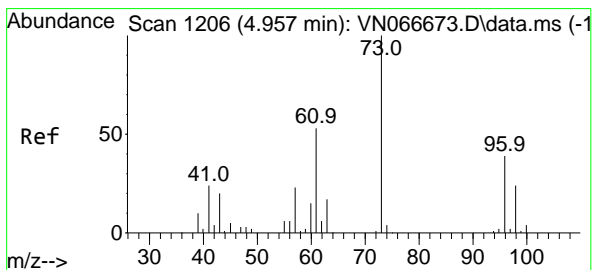
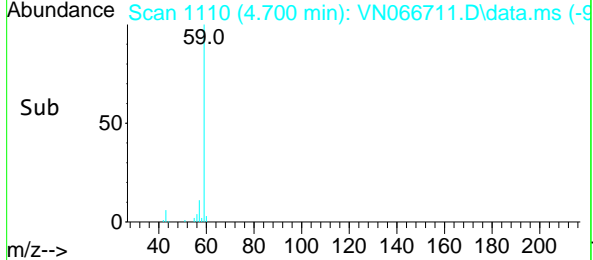
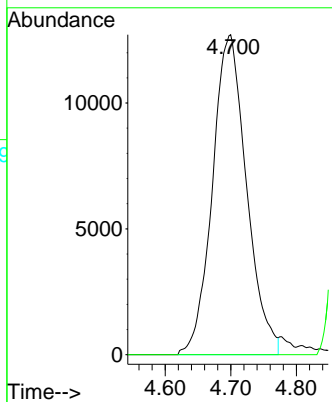
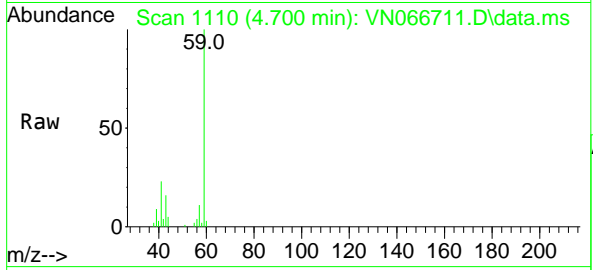




#23
 tert-Butyl Alcohol
 Concen: 84.73 ug/l
 RT: 4.700 min Scan# 1110
 Delta R.T. -0.008 min
 Lab File: VN066711.D
 Acq: 22 Apr 2021 13:52

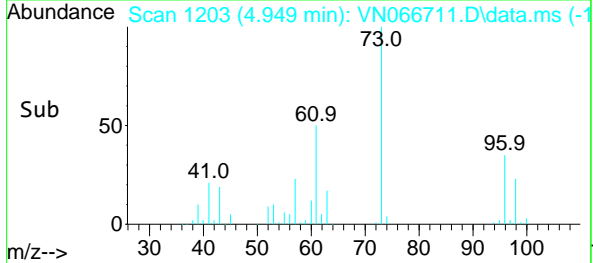
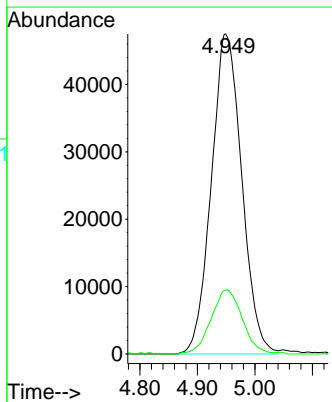
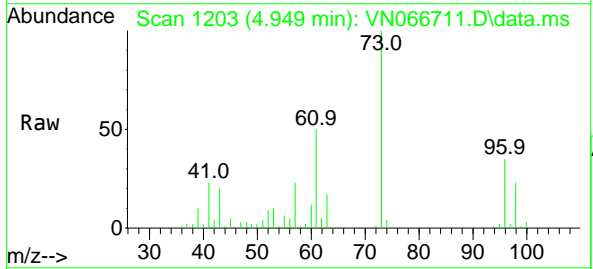
Instrument :
 MSVOA_N
 ClientSampled :

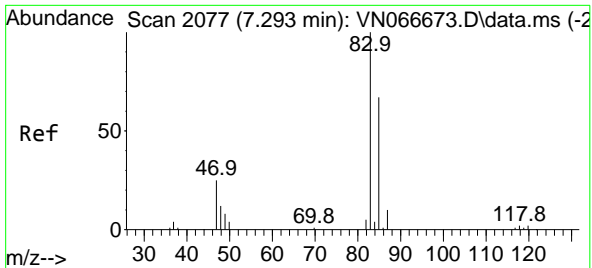
Tgt Ion: 59 Resp: 45930
 Ion Ratio Lower Upper
 59 100
 52 0.0 0.1 0.1#



#24
 Methyl tert-Butyl Ether
 Concen: 18.81 ug/l
 RT: 4.949 min Scan# 1203
 Delta R.T. -0.008 min
 Lab File: VN066711.D
 Acq: 22 Apr 2021 13:52

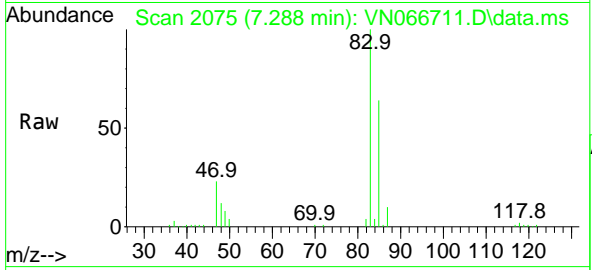
Tgt Ion: 73 Resp: 174394
 Ion Ratio Lower Upper
 73 100
 43 20.5 18.5 27.7



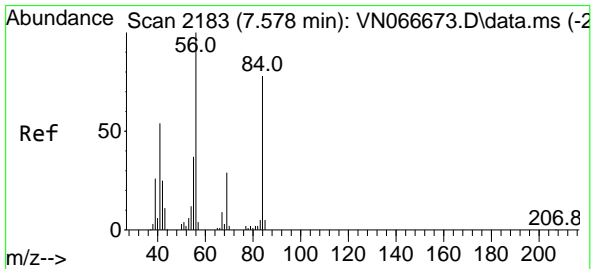
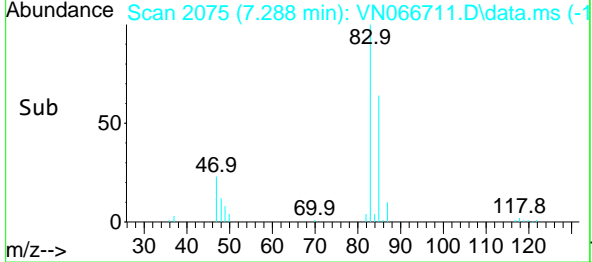
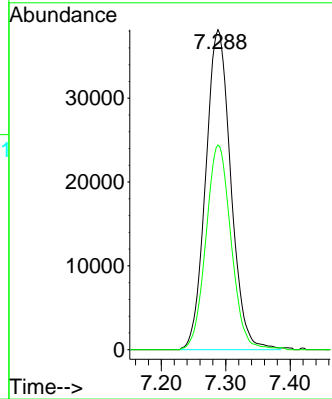


#25
 Chloroform
 Concen: 18.13 ug/l
 RT: 7.288 min Scan# 2075
 Delta R.T. -0.005 min
 Lab File: VN066711.D
 Acq: 22 Apr 2021 13:52

Instrument :
 MSVOA_N
 ClientSampled :

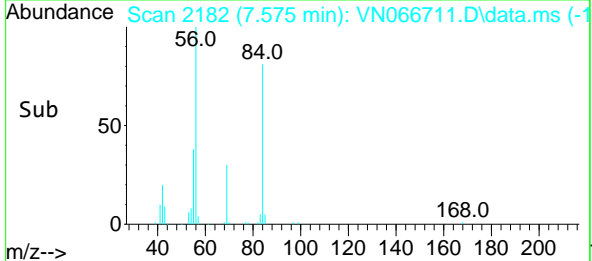
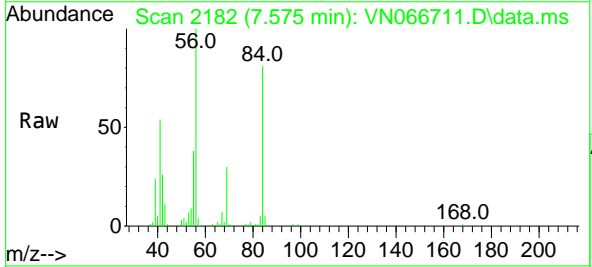
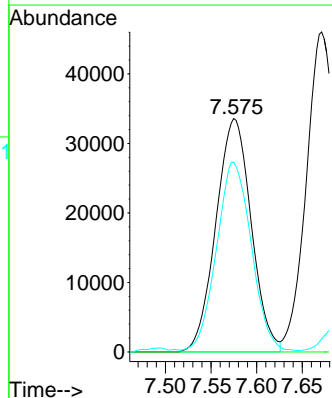


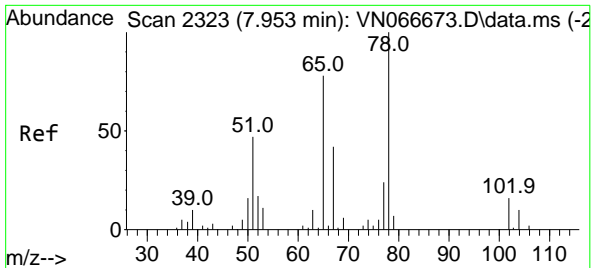
Tgt Ion: 83 Resp: 103467
 Ion Ratio Lower Upper
 83 100
 85 64.0 49.4 74.2



#26
 Cyclohexane
 Concen: 17.66 ug/l
 RT: 7.575 min Scan# 2182
 Delta R.T. -0.003 min
 Lab File: VN066711.D
 Acq: 22 Apr 2021 13:52

Tgt Ion: 56 Resp: 90502
 Ion Ratio Lower Upper
 56 100
 89 0.0 0.0 0.0
 84 80.7 65.4 98.2

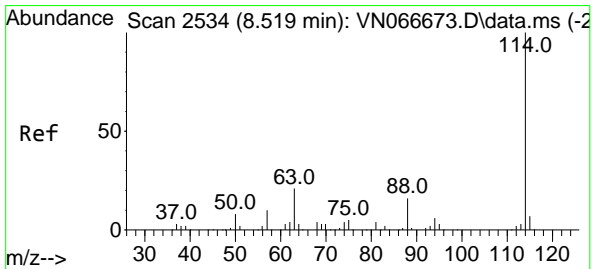
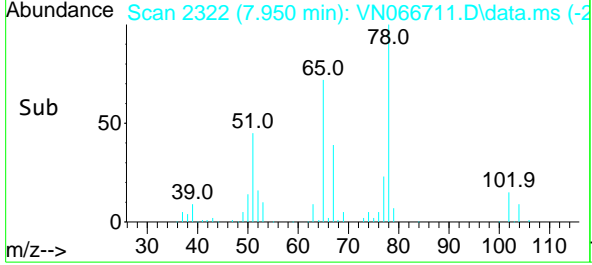
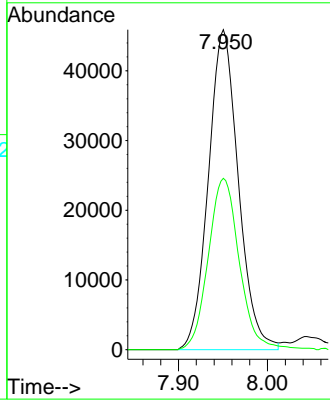
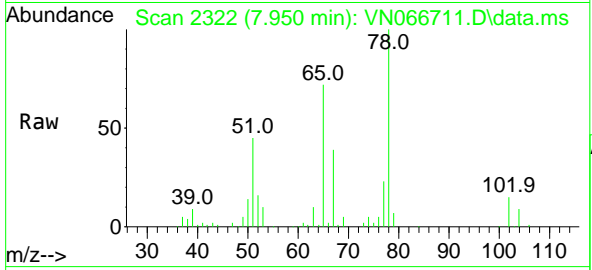




#27
 1,2-Dichloroethane-d4
 Concen: 29.17 ug/l
 RT: 7.950 min Scan# 2322
 Delta R.T. -0.003 min
 Lab File: VN066711.D
 Acq: 22 Apr 2021 13:52

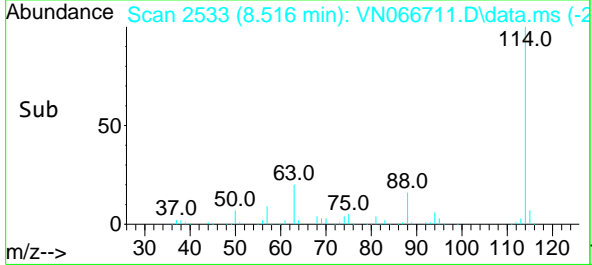
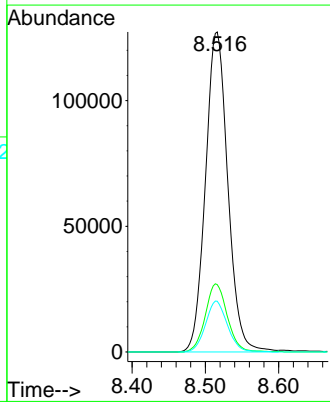
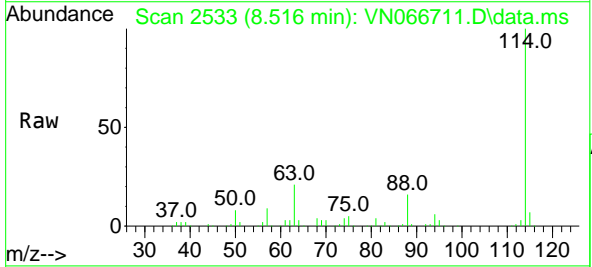
Instrument :
 MSVOA_N
 ClientSampled :

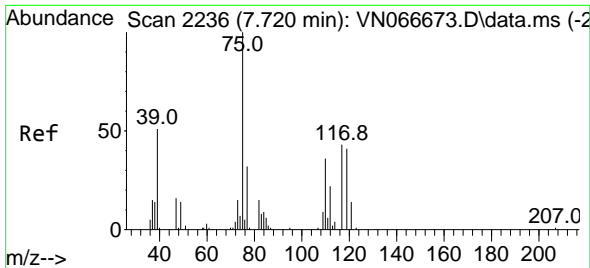
Tgt Ion: 65 Resp: 107509
 Ion Ratio Lower Upper
 65 100
 67 55.4 42.2 63.4



#28
 1,4-Difluorobenzene
 Concen: 30.00 ug/l
 RT: 8.516 min Scan# 2533
 Delta R.T. -0.003 min
 Lab File: VN066711.D
 Acq: 22 Apr 2021 13:52

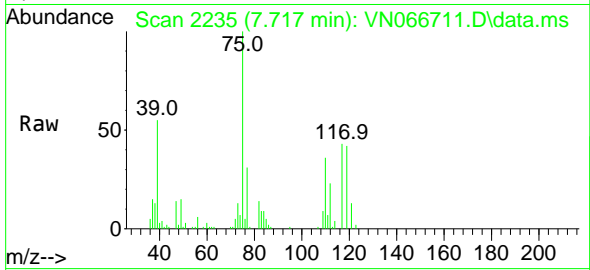
Tgt Ion:114 Resp: 269815
 Ion Ratio Lower Upper
 114 100
 63 21.0 17.4 26.0
 88 15.6 12.6 19.0





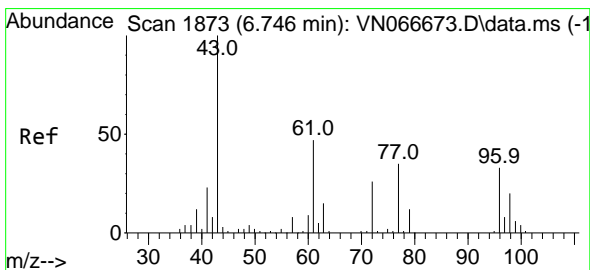
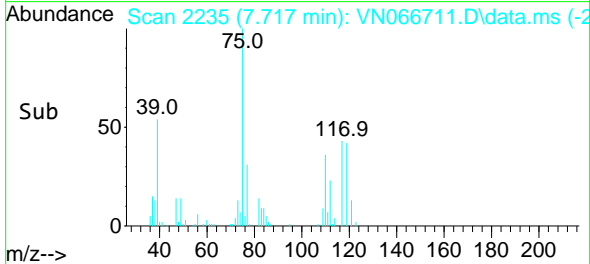
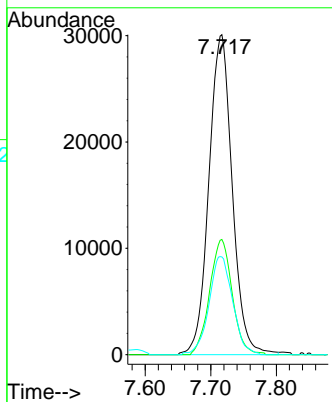
#29
 1,1-Dichloropropene
 Concen: 17.51 ug/l
 RT: 7.717 min Scan# 2235
 Delta R.T. -0.003 min
 Lab File: VN066711.D
 Acq: 22 Apr 2021 13:52

Instrument :
 MSVOA_N
 ClientSampled :

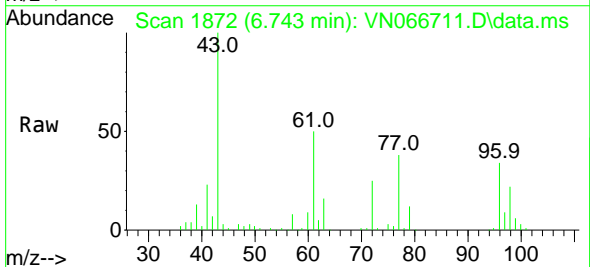


Tgt Ion: 75 Resp: 74380

Ion	Ratio	Lower	Upper
75	100		
110	34.9	0.0	69.4
77	30.9	0.0	60.6

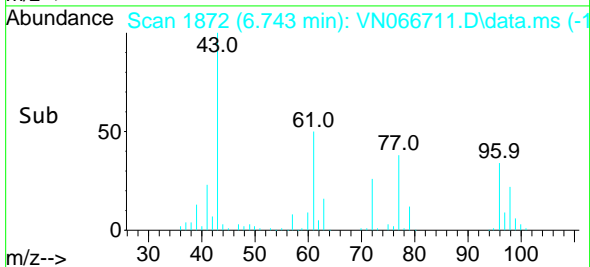
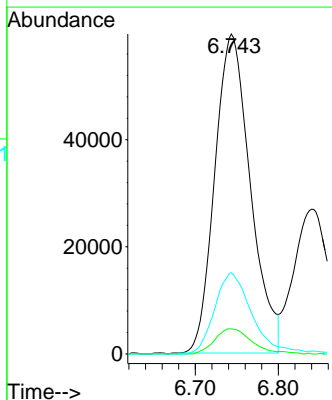


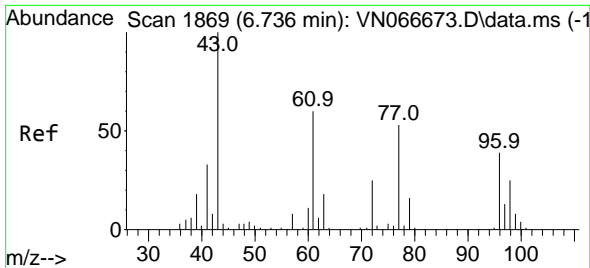
#30
 2-Butanone
 Concen: 86.47 ug/l
 RT: 6.743 min Scan# 1872
 Delta R.T. -0.003 min
 Lab File: VN066711.D
 Acq: 22 Apr 2021 13:52



Tgt Ion: 43 Resp: 177348

Ion	Ratio	Lower	Upper
43	100		
57	8.0	6.9	10.3
72	26.2	20.9	31.3

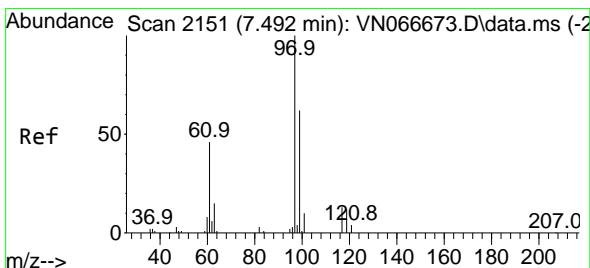
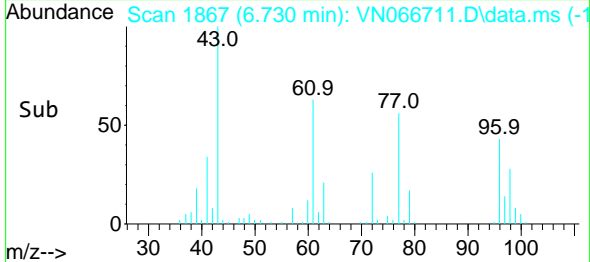
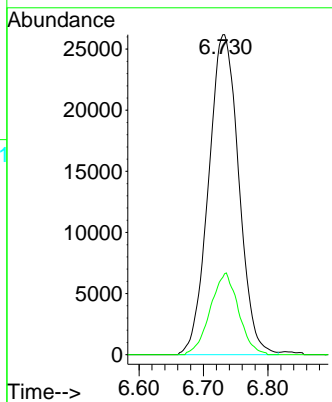
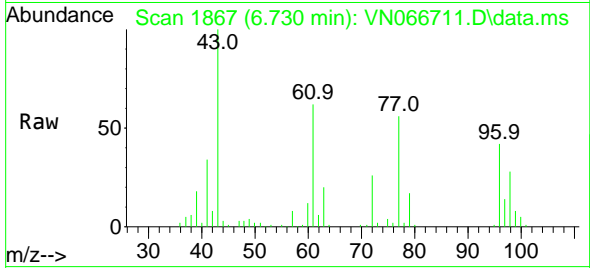




#31
 2,2-Dichloropropane
 Concen: 17.41 ug/l
 RT: 6.730 min Scan# 1867
 Delta R.T. -0.006 min
 Lab File: VN066711.D
 Acq: 22 Apr 2021 13:52

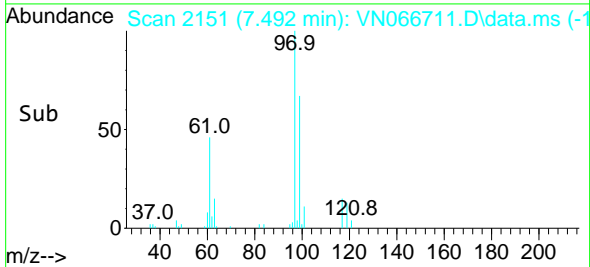
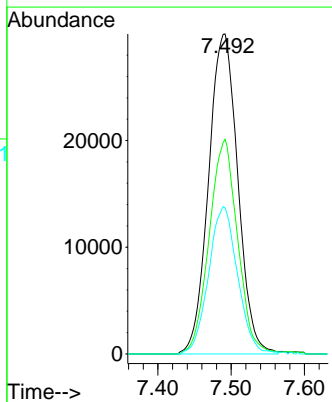
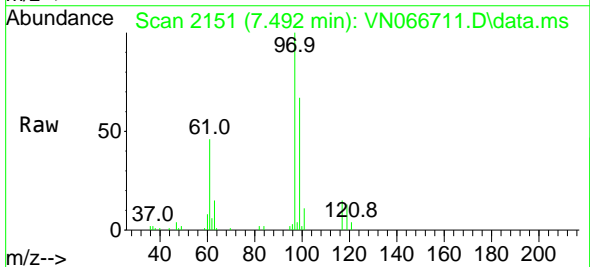
Instrument :
 MSVOA_N
 ClientSampled :

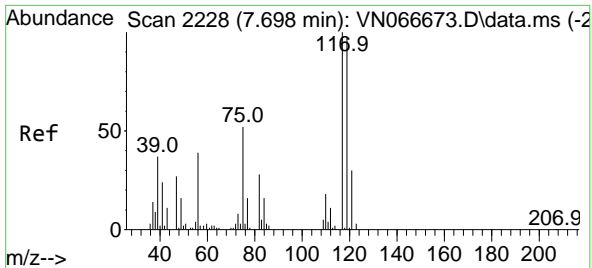
Tgt Ion: 77 Resp: 85241
 Ion Ratio Lower Upper
 77 100
 97 23.9 18.1 27.1



#32
 1,1,1-Trichloroethane
 Concen: 17.33 ug/l
 RT: 7.492 min Scan# 2151
 Delta R.T. -0.000 min
 Lab File: VN066711.D
 Acq: 22 Apr 2021 13:52

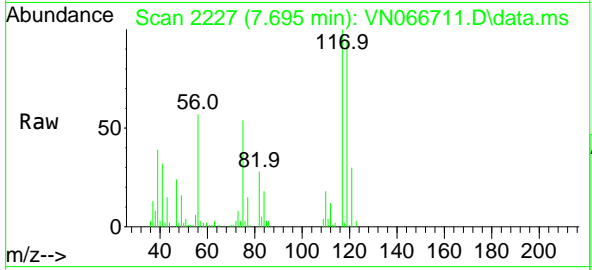
Tgt Ion: 97 Resp: 83140
 Ion Ratio Lower Upper
 97 100
 99 65.2 50.7 76.1
 61 45.3 37.6 56.4





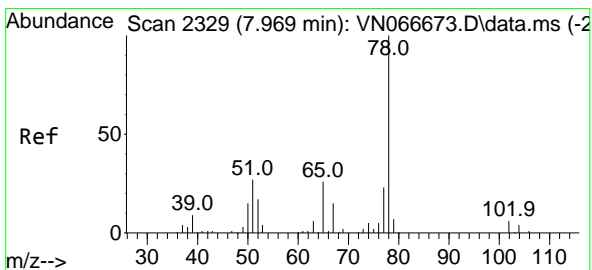
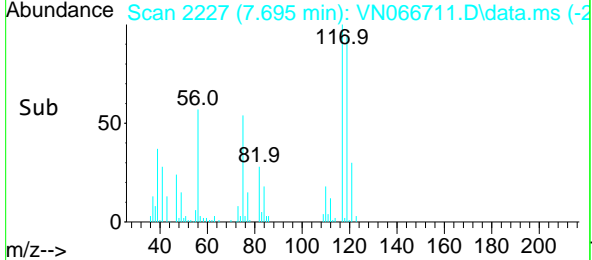
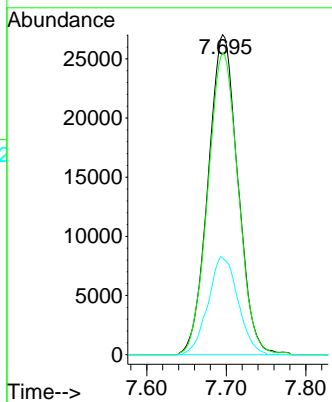
#33
 Carbon Tetrachloride
 Concen: 17.36 ug/l
 RT: 7.695 min Scan# 2227
 Delta R.T. -0.003 min
 Lab File: VN066711.D
 Acq: 22 Apr 2021 13:52

Instrument :
 MSVOA_N
 ClientSampled :



Tgt Ion:117 Resp: 70327

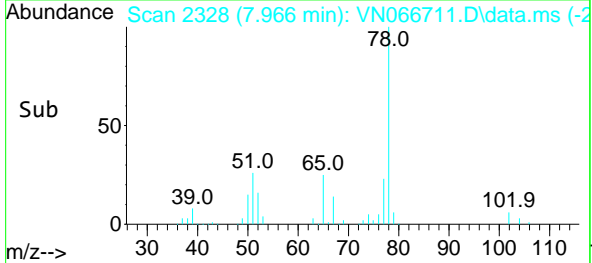
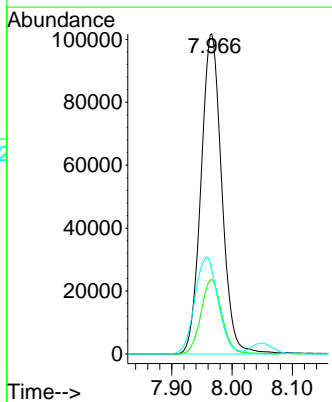
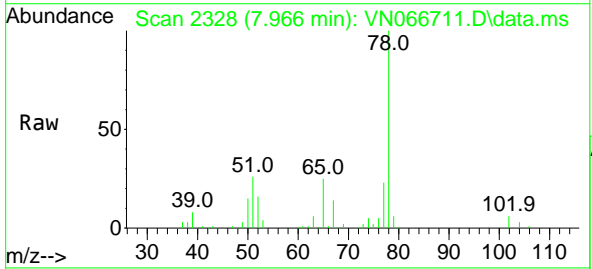
Ion	Ratio	Lower	Upper
117	100		
119	94.3	72.6	108.8
121	30.3	23.5	35.3

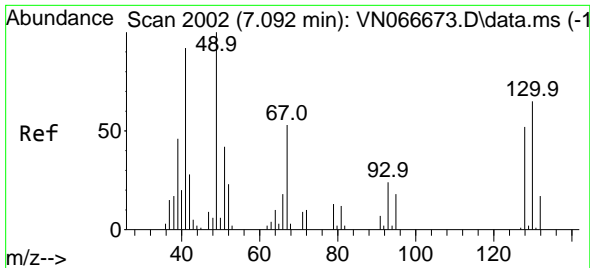


#34
 Benzene
 Concen: 17.74 ug/l
 RT: 7.966 min Scan# 2328
 Delta R.T. -0.003 min
 Lab File: VN066711.D
 Acq: 22 Apr 2021 13:52

Tgt Ion: 78 Resp: 242888

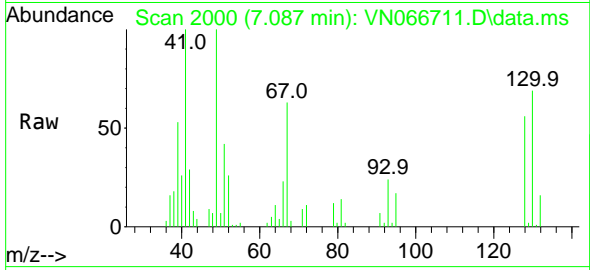
Ion	Ratio	Lower	Upper
78	100		
77	23.3	18.6	27.8
51	25.6	21.9	32.9





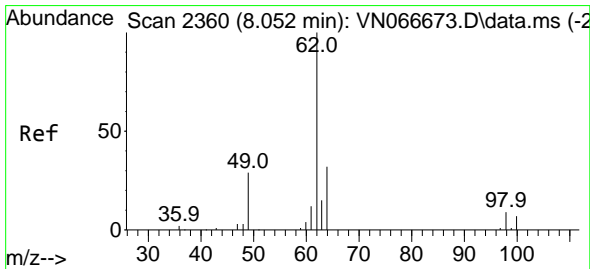
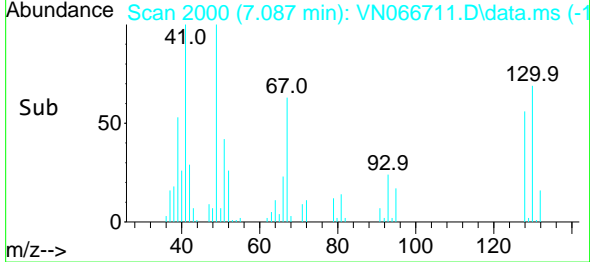
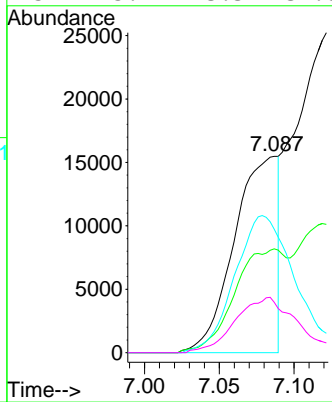
#35
 Methacrylonitrile
 Concen: 15.93 ug/l
 RT: 7.087 min Scan# 2000
 Delta R.T. -0.005 min
 Lab File: VN066711.D
 Acq: 22 Apr 2021 13:52

Instrument :
 MSVOA_N
 ClientSampled :

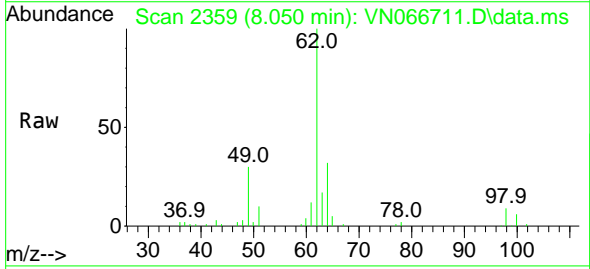


Tgt Ion: 41 Resp: 31447

Ion	Ratio	Lower	Upper
41	100		
39	52.9	27.3	81.8
67	62.9	31.4	94.3
52	25.7	13.3	39.8

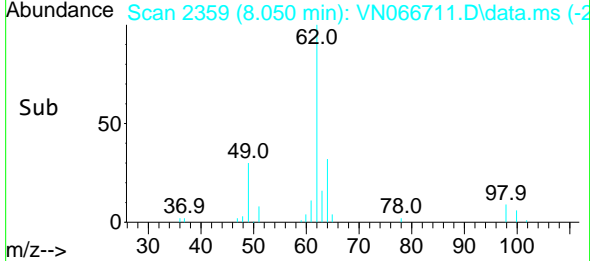
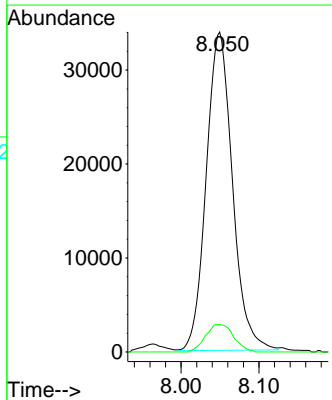


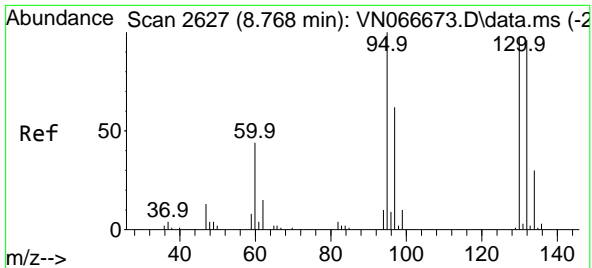
#36
 1,2-Dichloroethane
 Concen: 17.60 ug/l
 RT: 8.050 min Scan# 2359
 Delta R.T. -0.002 min
 Lab File: VN066711.D
 Acq: 22 Apr 2021 13:52



Tgt Ion: 62 Resp: 79138

Ion	Ratio	Lower	Upper
62	100		
98	9.3	6.9	10.3

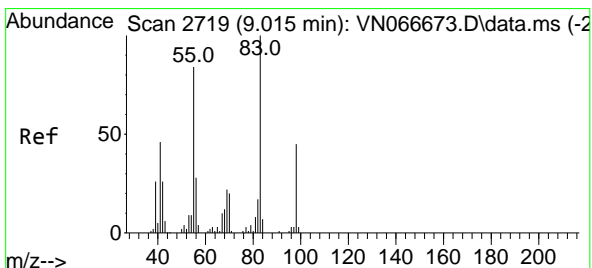
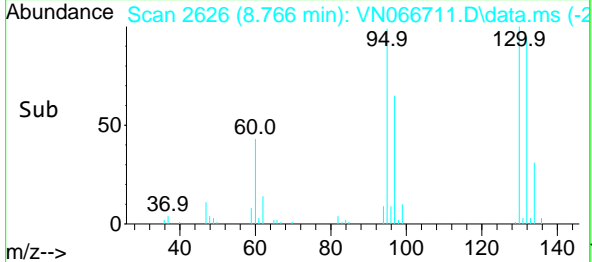
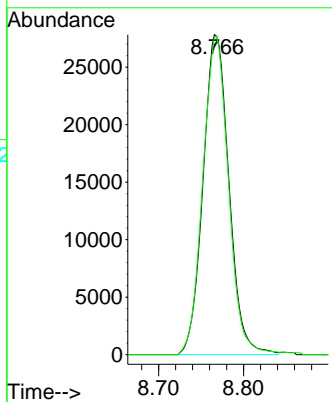
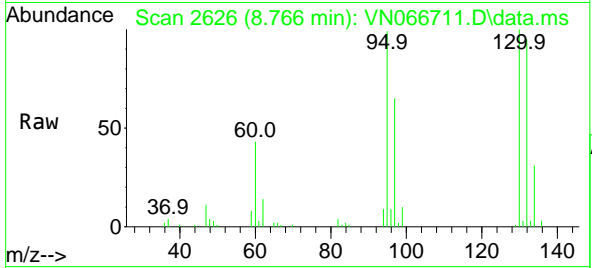




#37
 Trichloroethene
 Concen: 18.11 ug/l
 RT: 8.766 min Scan# 2626
 Delta R.T. -0.002 min
 Lab File: VN066711.D
 Acq: 22 Apr 2021 13:52

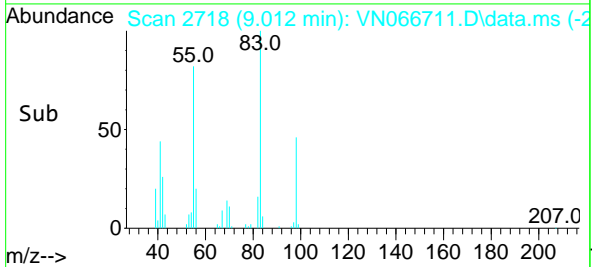
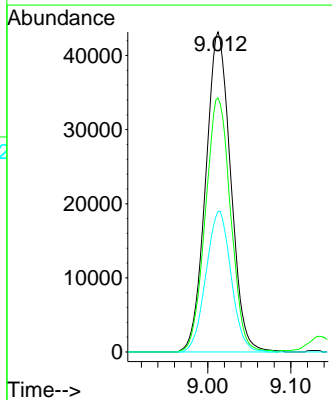
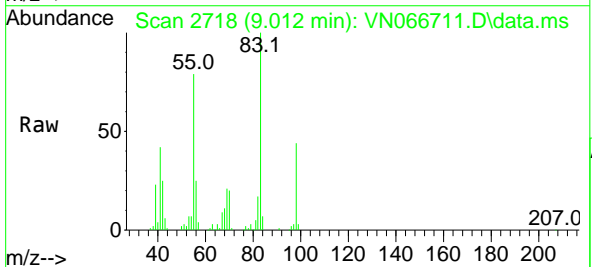
Instrument :
 MSVOA_N
 ClientSampled :

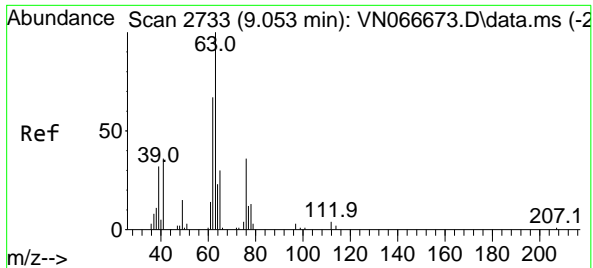
Tgt Ion:130 Resp: 58963
 Ion Ratio Lower Upper
 130 100
 95 99.0 80.7 121.1



#38
 Methylcyclohexane
 Concen: 17.83 ug/l
 RT: 9.012 min Scan# 2718
 Delta R.T. -0.003 min
 Lab File: VN066711.D
 Acq: 22 Apr 2021 13:52

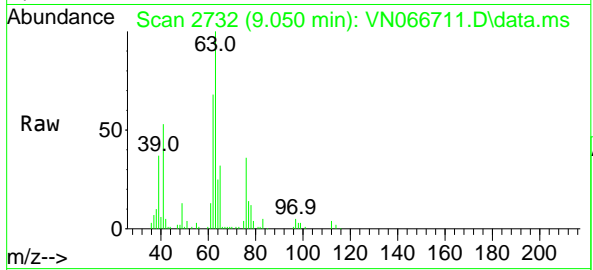
Tgt Ion: 83 Resp: 90334
 Ion Ratio Lower Upper
 83 100
 55 80.0 38.8 116.3
 98 44.1 22.2 66.6



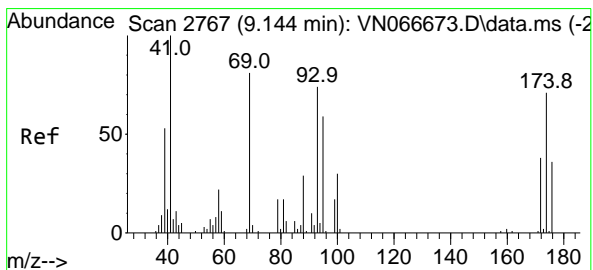
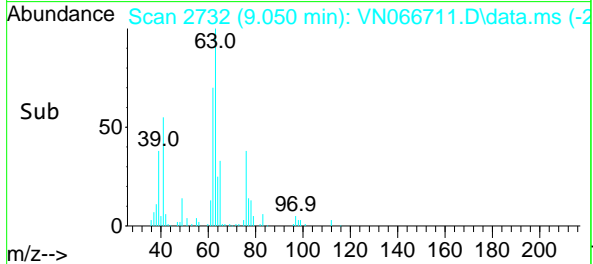
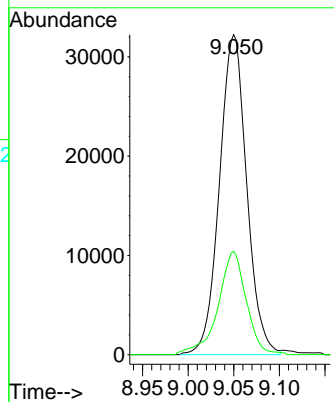


#39
 1,2-Dichloropropane
 Concen: 17.94 ug/l
 RT: 9.050 min Scan# 2732
 Delta R.T. -0.003 min
 Lab File: VN066711.D
 Acq: 22 Apr 2021 13:52

Instrument :
 MSVOA_N
 ClientSampled :

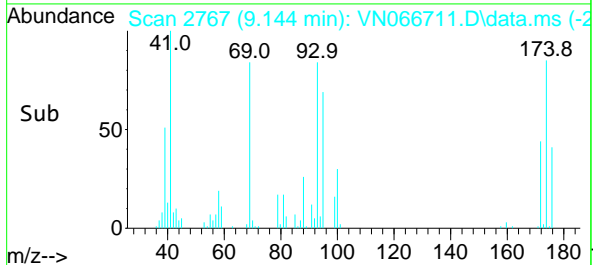
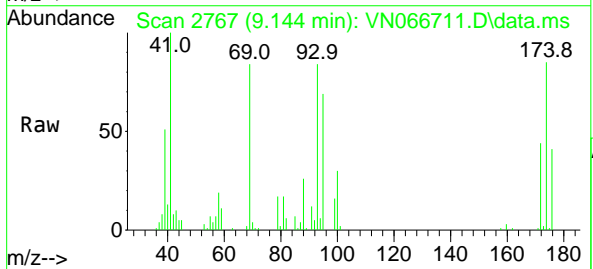
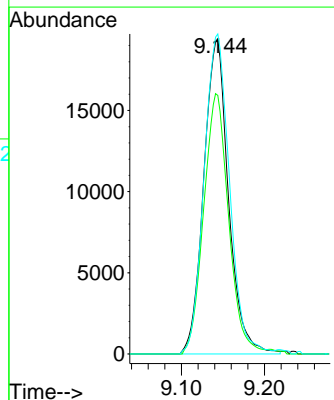


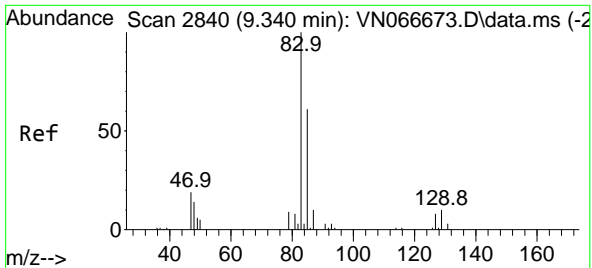
Tgt Ion: 63 Resp: 67068
 Ion Ratio Lower Upper
 63 100
 65 31.6 24.9 37.3



#40
 Dibromomethane
 Concen: 17.94 ug/l
 RT: 9.144 min Scan# 2767
 Delta R.T. -0.000 min
 Lab File: VN066711.D
 Acq: 22 Apr 2021 13:52

Tgt Ion: 93 Resp: 40210
 Ion Ratio Lower Upper
 93 100
 95 83.1 0.0 169.0
 174 104.2 0.0 205.8

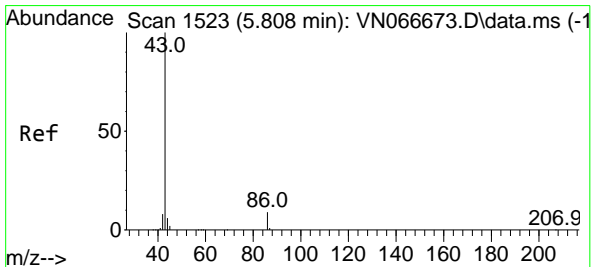
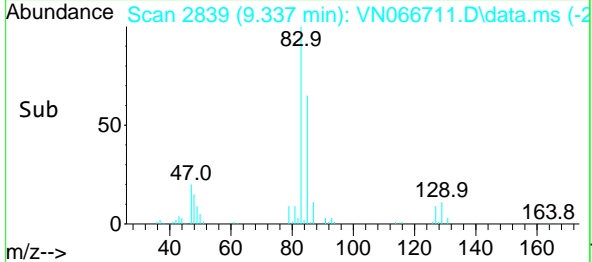
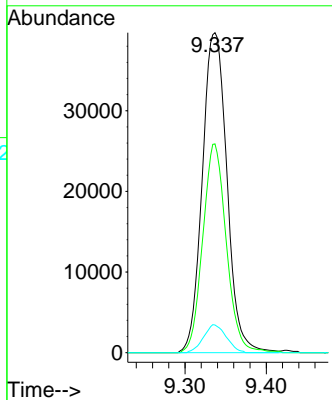
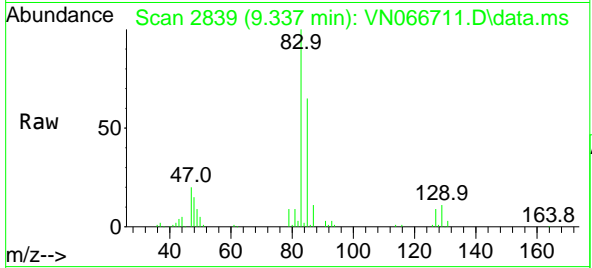




#41
 Bromodichloromethane
 Concen: 17.79 ug/l
 RT: 9.337 min Scan# 2839
 Delta R.T. -0.003 min
 Lab File: VN066711.D
 Acq: 22 Apr 2021 13:52

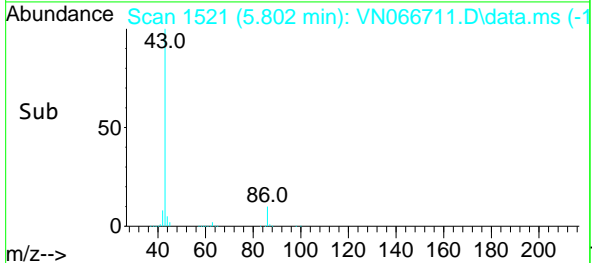
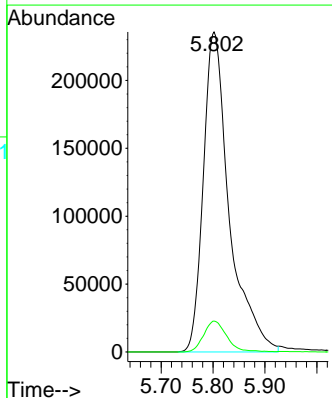
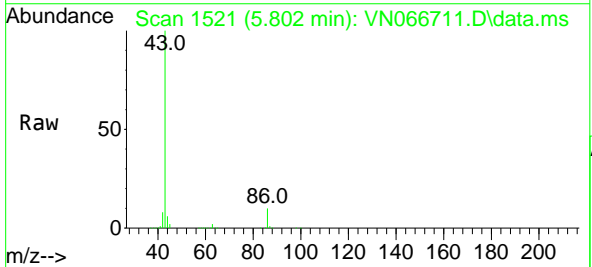
Instrument :
 MSVOA_N
 ClientSampled :

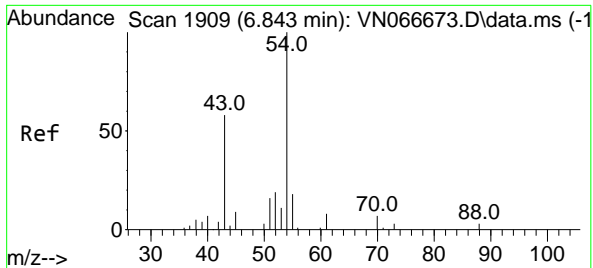
Tgt Ion	Resp	Lower	Upper
83	83699		
83	100		
85	65.3	50.6	75.8
127	8.6	6.9	10.3



#42
 Vinyl Acetate
 Concen: 89.19 ug/l
 RT: 5.802 min Scan# 1521
 Delta R.T. -0.006 min
 Lab File: VN066711.D
 Acq: 22 Apr 2021 13:52

Tgt Ion	Resp	Lower	Upper
43	819907		
43	100		
86	8.4	6.7	10.1

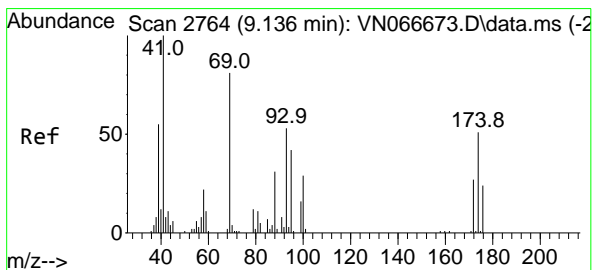
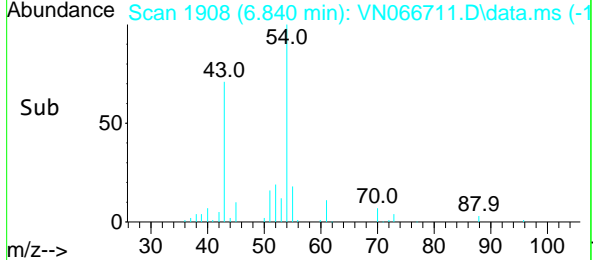
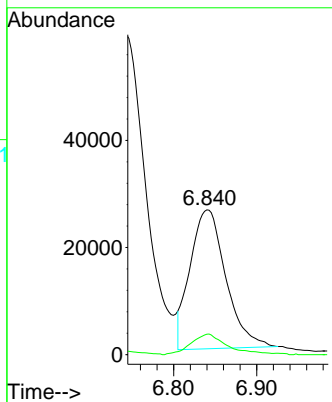
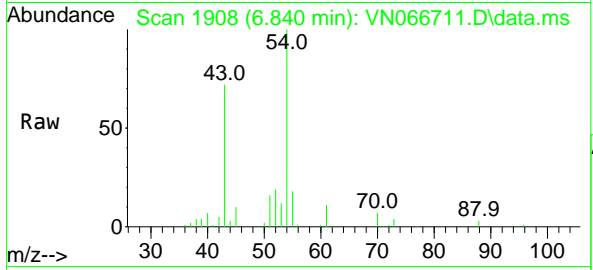




#43
 Ethyl Acetate
 Concen: 17.23 ug/l
 RT: 6.840 min Scan# 1908
 Delta R.T. -0.003 min
 Lab File: VN066711.D
 Acq: 22 Apr 2021 13:52

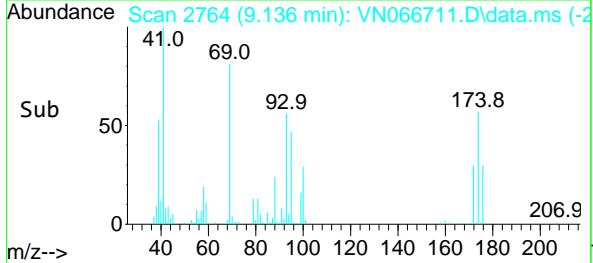
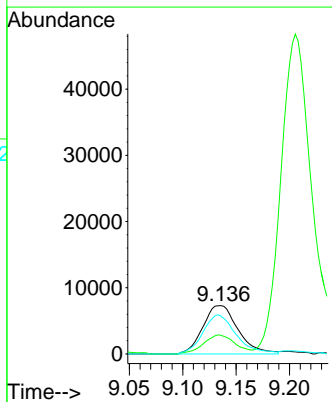
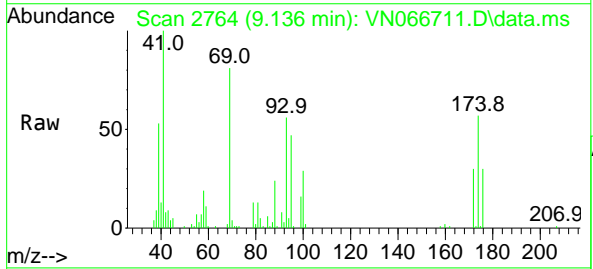
Instrument :
 MSVOA_N
 ClientSampled :

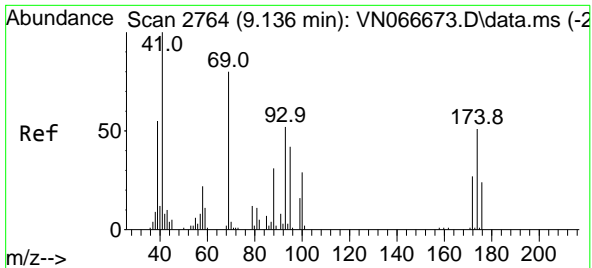
Tgt Ion: 43 Resp: 77700
 Ion Ratio Lower Upper
 43 100
 45 14.3 6.3 9.5#



#45
 1,4-Dioxane
 Concen: 305.68 ug/l
 RT: 9.136 min Scan# 2764
 Delta R.T. -0.000 min
 Lab File: VN066711.D
 Acq: 22 Apr 2021 13:52

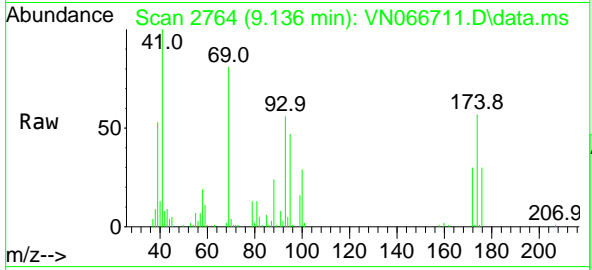
Tgt Ion: 88 Resp: 16733
 Ion Ratio Lower Upper
 88 100
 43 35.9 27.0 40.4
 58 76.5 57.9 86.9





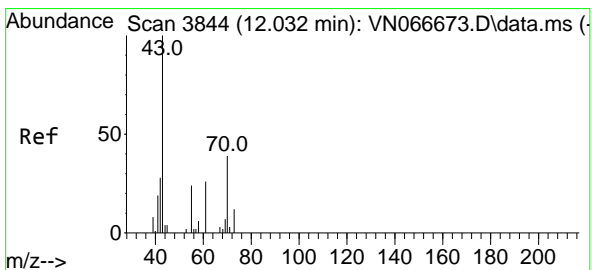
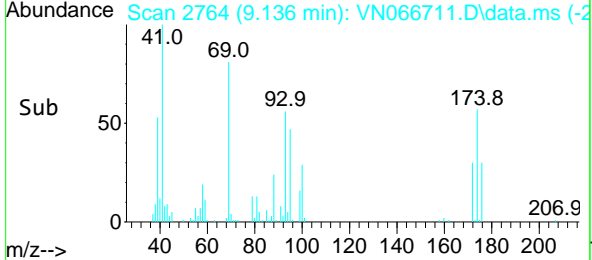
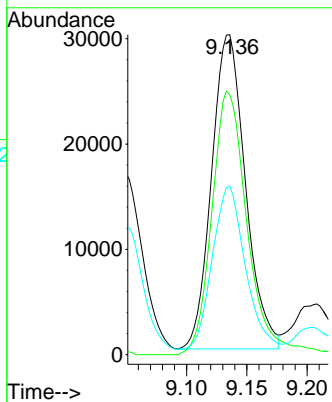
#46
 Methyl methacrylate
 Concen: 16.94 ug/l
 RT: 9.136 min Scan# 2764
 Delta R.T. -0.000 min
 Lab File: VN066711.D
 Acq: 22 Apr 2021 13:52

Instrument :
 MSVOA_N
 ClientSampled :

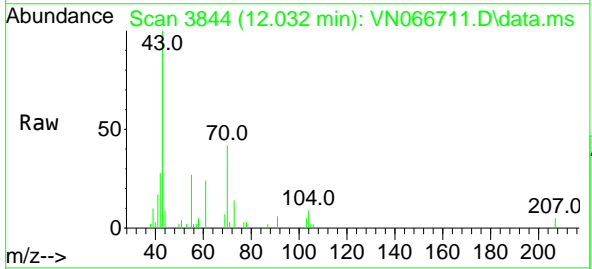


Tgt Ion: 41 Resp: 58231

Ion	Ratio	Lower	Upper
41	100		
69	82.8	40.6	121.7
39	52.0	33.2	99.6

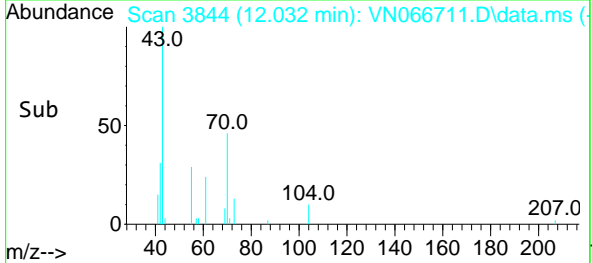
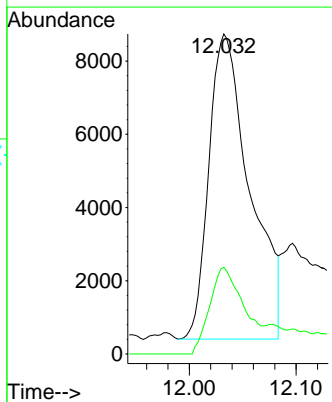


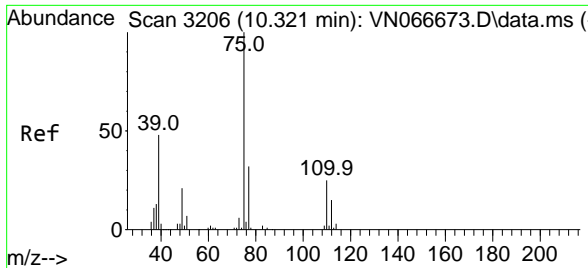
#47
 n-amy1 Acetate
 Concen: 5.37 ug/l
 RT: 12.032 min Scan# 3844
 Delta R.T. 0.000 min
 Lab File: VN066711.D
 Acq: 22 Apr 2021 13:52



Tgt Ion: 43 Resp: 22278

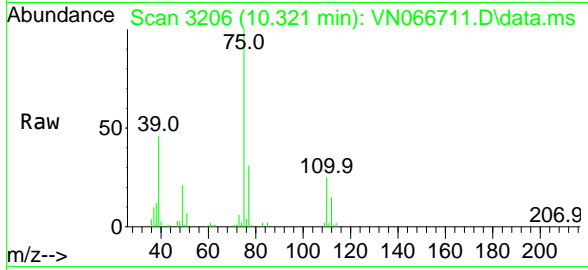
Ion	Ratio	Lower	Upper
43	100		
55	24.1	17.7	26.5



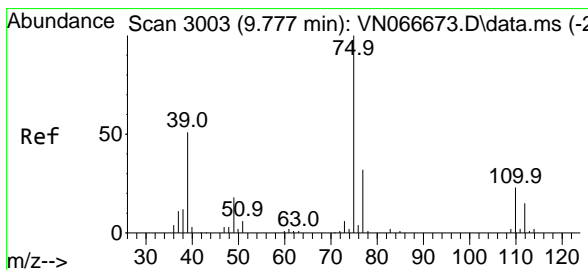
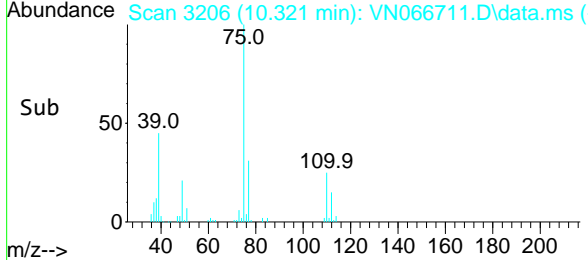
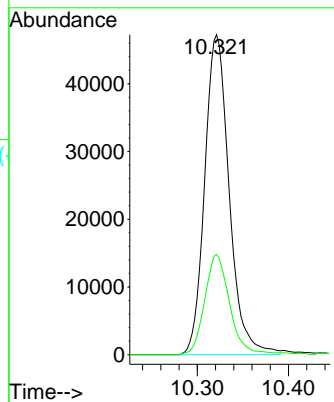


#48
 t-1,3-Dichloropropene
 Concen: 17.16 ug/l
 RT: 10.321 min Scan# 3206
 Delta R.T. 0.000 min
 Lab File: VN066711.D
 Acq: 22 Apr 2021 13:52

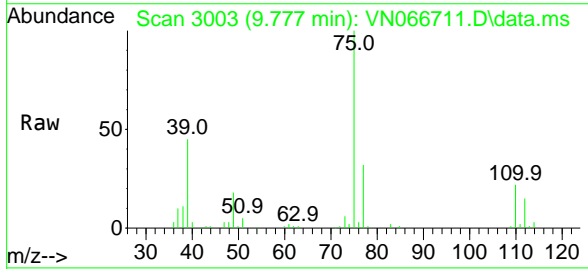
Instrument :
 MSVOA_N
 ClientSampled :



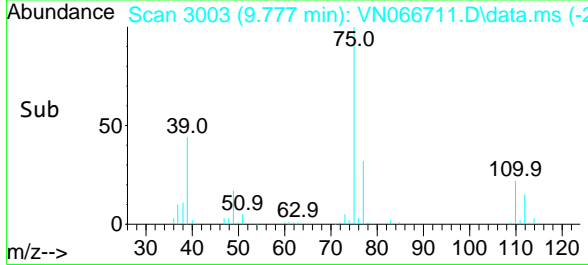
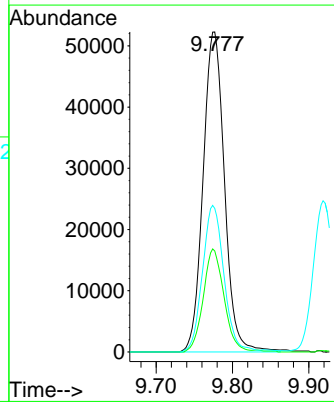
Tgt Ion: 75 Resp: 88239
 Ion Ratio Lower Upper
 75 100
 77 31.3 24.9 37.3

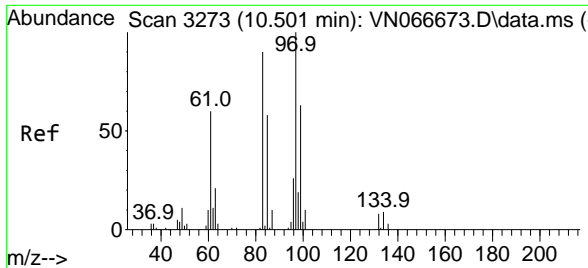


#49
 cis-1,3-Dichloropropene
 Concen: 17.95 ug/l
 RT: 9.777 min Scan# 3003
 Delta R.T. -0.000 min
 Lab File: VN066711.D
 Acq: 22 Apr 2021 13:52



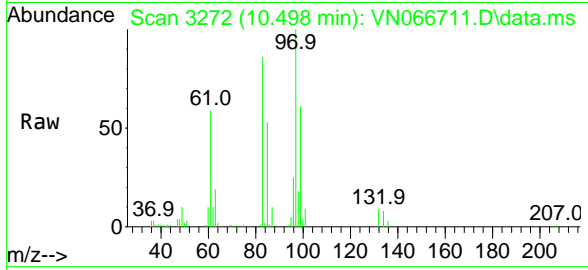
Tgt Ion: 75 Resp: 101963
 Ion Ratio Lower Upper
 75 100
 77 31.5 25.4 38.0
 39 44.9 46.8 70.2#





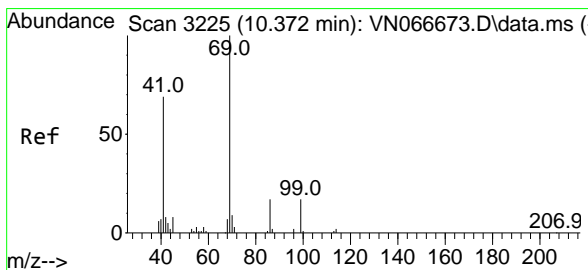
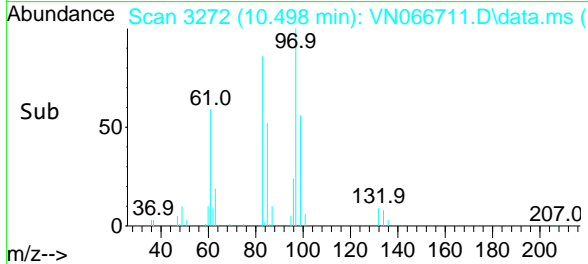
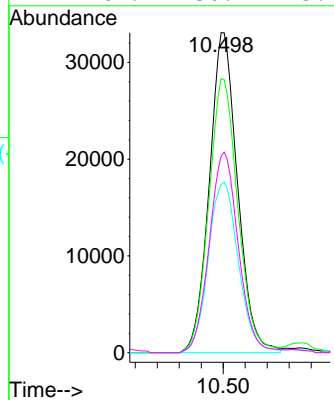
#50
 1,1,2-Trichloroethane
 Concen: 17.88 ug/l
 RT: 10.498 min Scan# 3272
 Delta R.T. -0.003 min
 Lab File: VN066711.D
 Acq: 22 Apr 2021 13:52

Instrument :
 MSVOA_N
 ClientSampled :

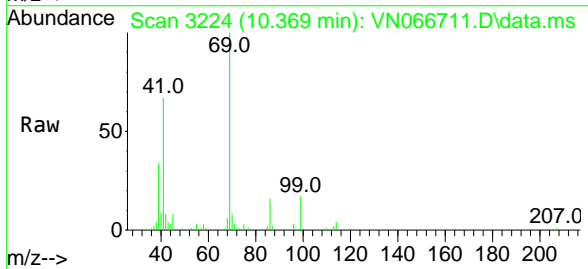


Tgt Ion: 97 Resp: 58917

Ion	Ratio	Lower	Upper
97	100		
83	85.6	68.8	103.2
85	52.6	44.8	67.2
99	61.4	50.1	75.1

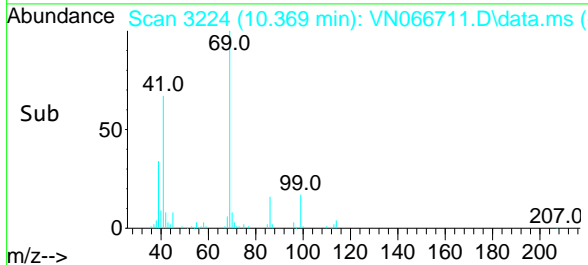
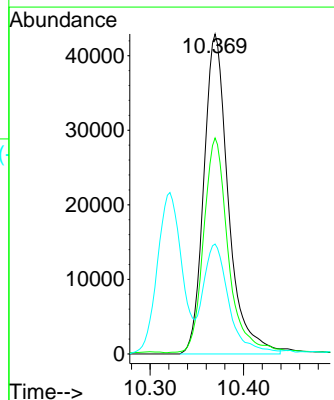


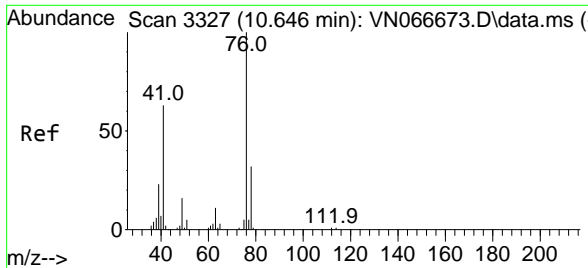
#51
 Ethyl methacrylate
 Concen: 16.83 ug/l
 RT: 10.369 min Scan# 3224
 Delta R.T. -0.003 min
 Lab File: VN066711.D
 Acq: 22 Apr 2021 13:52



Tgt Ion: 69 Resp: 78318

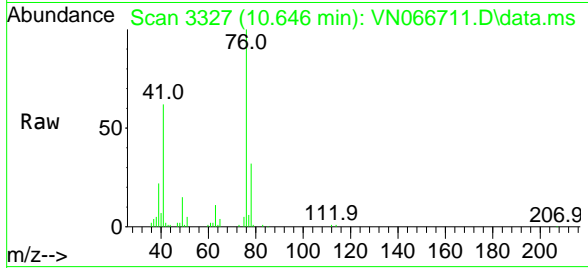
Ion	Ratio	Lower	Upper
69	100		
41	66.8	34.8	104.5
39	33.4	22.5	67.5



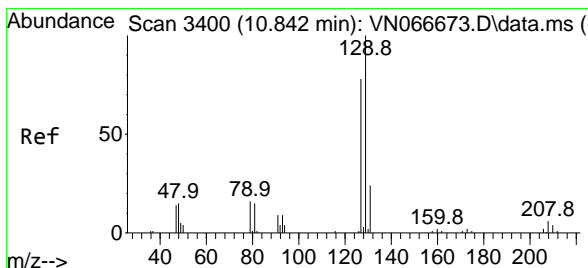
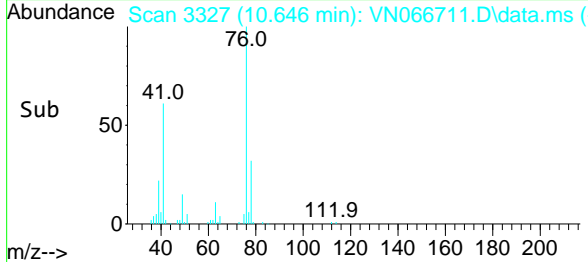
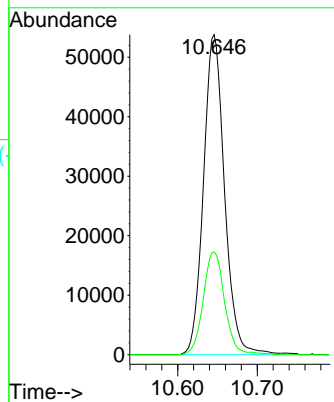


#52
 1,3-Dichloropropane
 Concen: 17.65 ug/l
 RT: 10.646 min Scan# 3327
 Delta R.T. -0.000 min
 Lab File: VN066711.D
 Acq: 22 Apr 2021 13:52

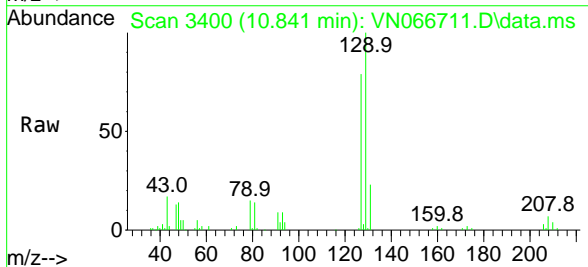
Instrument :
 MSVOA_N
 ClientSampled :



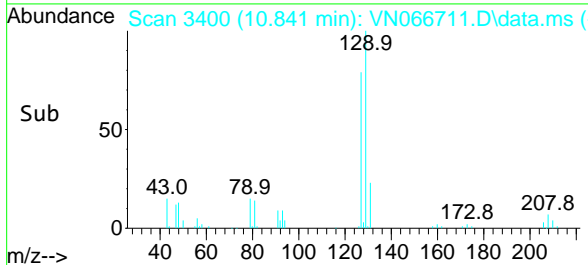
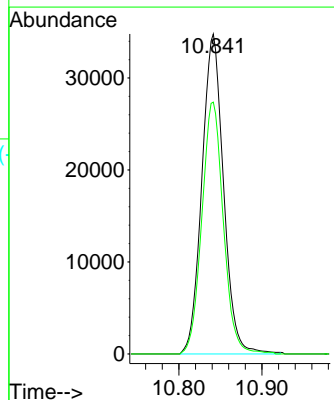
Tgt Ion: 76 Resp: 98984
 Ion Ratio Lower Upper
 76 100
 78 32.1 0.0 65.6

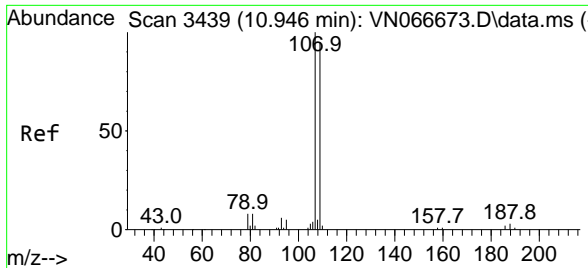


#53
 Dibromochloromethane
 Concen: 17.66 ug/l
 RT: 10.841 min Scan# 3400
 Delta R.T. -0.001 min
 Lab File: VN066711.D
 Acq: 22 Apr 2021 13:52



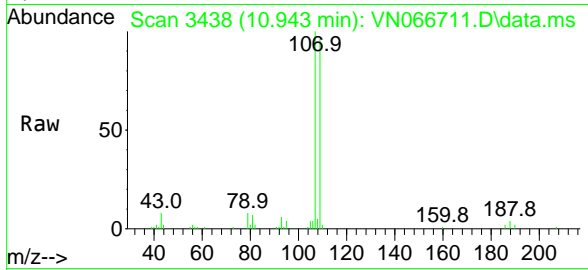
Tgt Ion: 129 Resp: 62922
 Ion Ratio Lower Upper
 129 100
 127 77.8 38.6 115.7



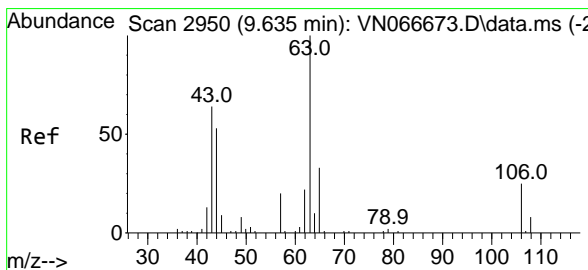
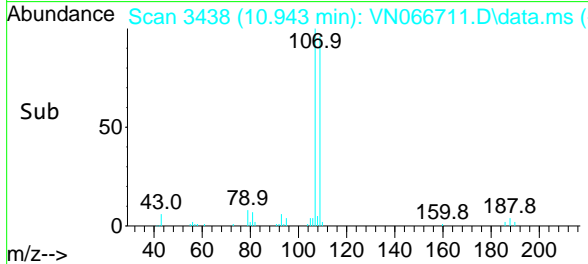
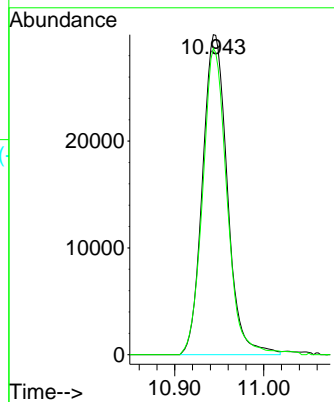


#54
 1,2-Dibromoethane
 Concen: 17.54 ug/l
 RT: 10.943 min Scan# 3438
 Delta R.T. -0.003 min
 Lab File: VN066711.D
 Acq: 22 Apr 2021 13:52

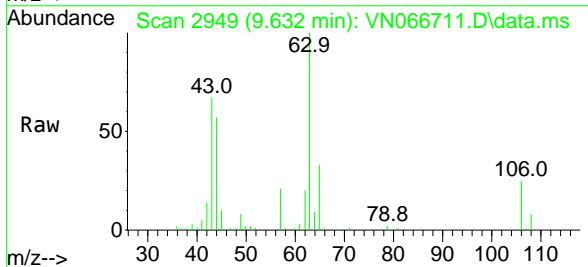
Instrument :
 MSVOA_N
 ClientSampled :



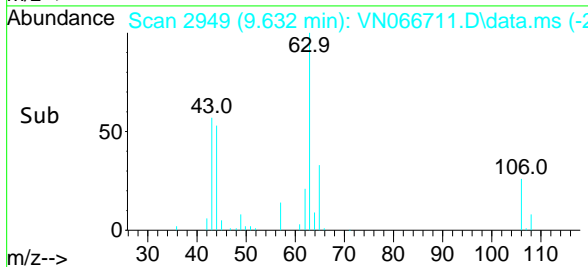
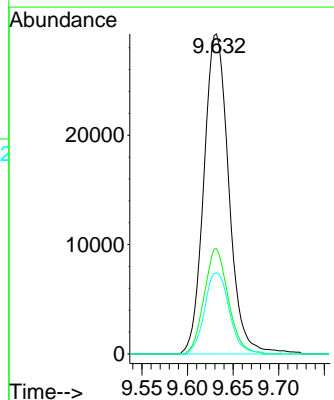
Tgt Ion:107 Resp: 57957
 Ion Ratio Lower Upper
 107 100
 109 93.8 75.8 113.6

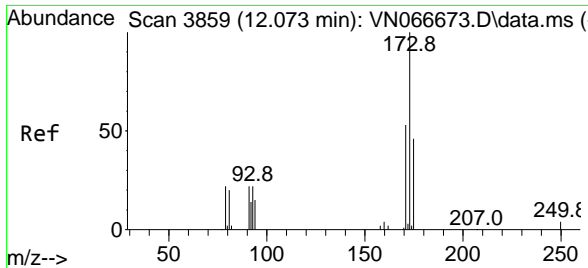


#55
 2-Chloroethyl vinyl ether
 Concen: 78.12 ug/l
 RT: 9.632 min Scan# 2949
 Delta R.T. -0.003 min
 Lab File: VN066711.D
 Acq: 22 Apr 2021 13:52



Tgt Ion: 63 Resp: 55594
 Ion Ratio Lower Upper
 63 100
 65 31.7 26.0 39.0
 106 25.2 20.6 31.0

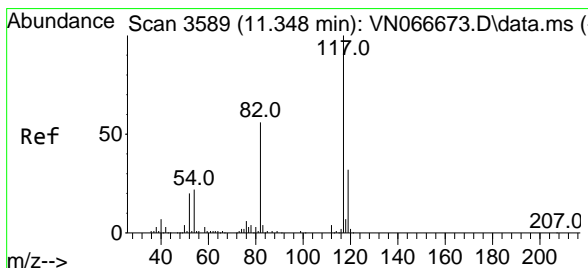
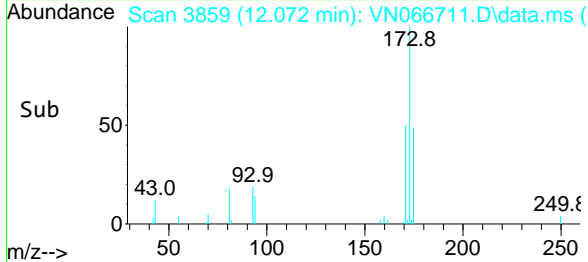
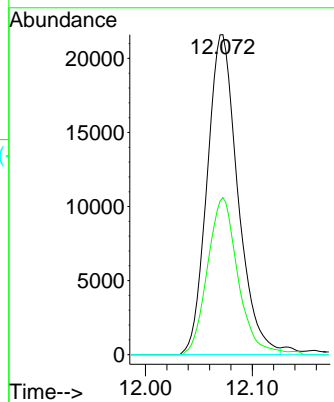
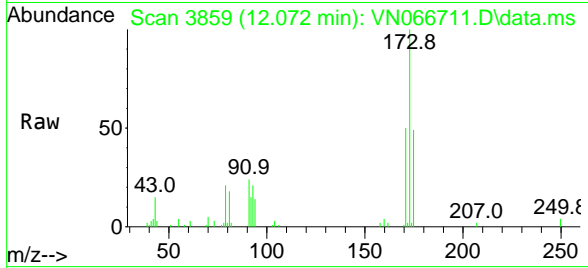




#56
 Bromoform
 Concen: 16.82 ug/l
 RT: 12.072 min Scan# 3859
 Delta R.T. -0.001 min
 Lab File: VN066711.D
 Acq: 22 Apr 2021 13:52

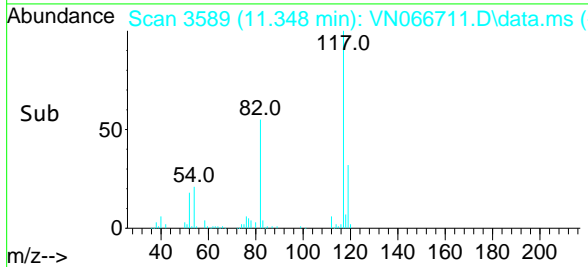
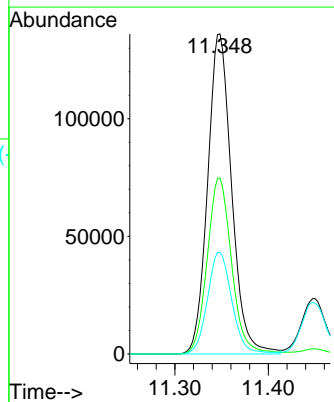
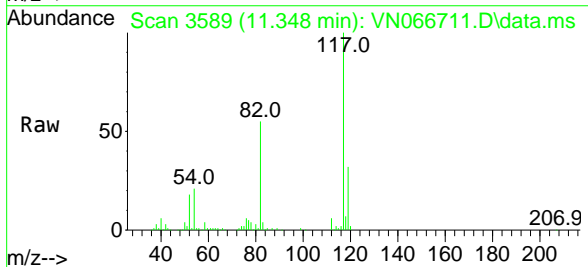
Instrument :
 MSVOA_N
 ClientSampled :

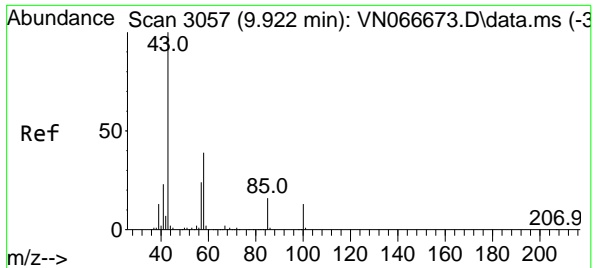
Tgt Ion	Resp	Lower	Upper
173	43200		
175	48.6	38.3	57.5
254	0.0	0.0	0.0



#57
 Chlorobenzene-d5
 Concen: 30.00 ug/l
 RT: 11.348 min Scan# 3589
 Delta R.T. 0.000 min
 Lab File: VN066711.D
 Acq: 22 Apr 2021 13:52

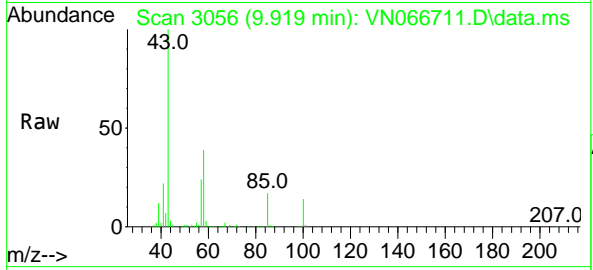
Tgt Ion	Resp	Lower	Upper
117	242941		
82	55.7	45.0	67.6
119	32.1	25.5	38.3





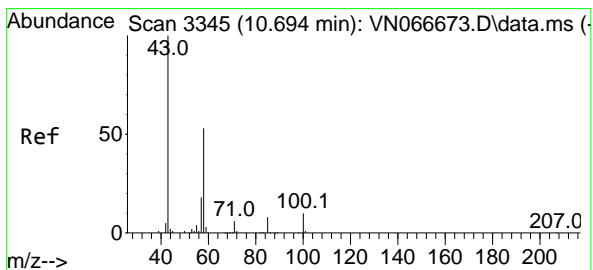
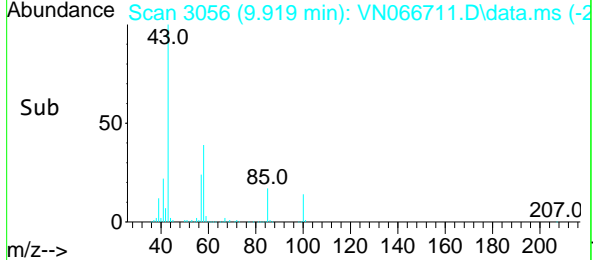
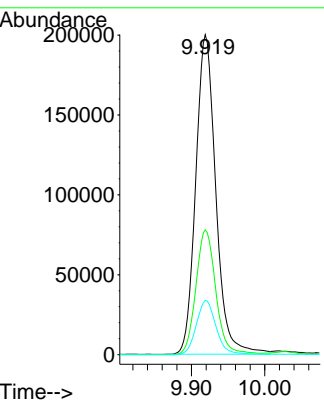
#58
 4-Methyl-2-Pentanone
 Concen: 92.09 ug/l
 RT: 9.919 min Scan# 3056
 Delta R.T. -0.003 min
 Lab File: VN066711.D
 Acq: 22 Apr 2021 13:52

Instrument :
 MSVOA_N
 ClientSampled :

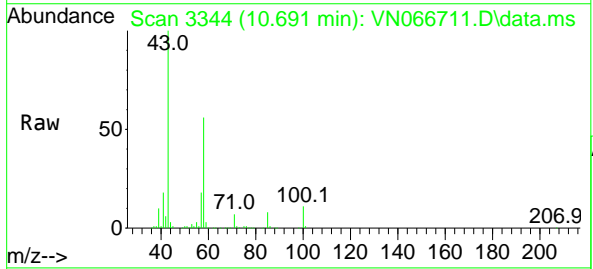


Tgt Ion: 43 Resp: 381015

Ion	Ratio	Lower	Upper
43	100		
58	38.9	30.4	45.6
85	16.8	13.8	20.8

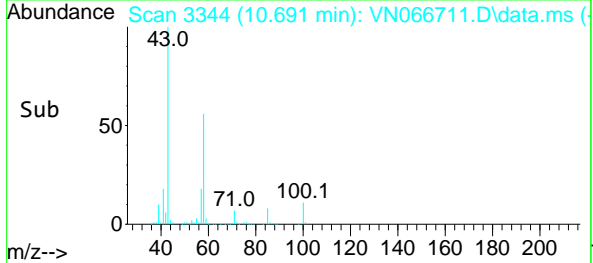
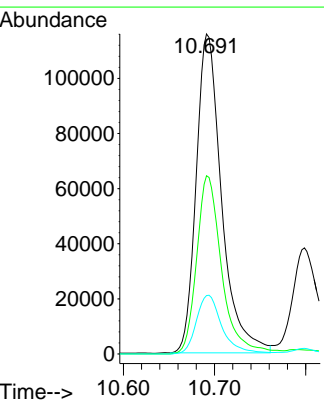


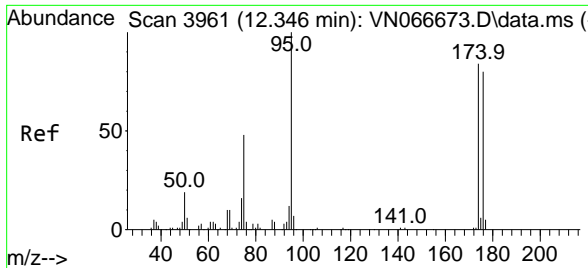
#59
 2-Hexanone
 Concen: 84.33 ug/l
 RT: 10.691 min Scan# 3344
 Delta R.T. -0.003 min
 Lab File: VN066711.D
 Acq: 22 Apr 2021 13:52



Tgt Ion: 43 Resp: 224319

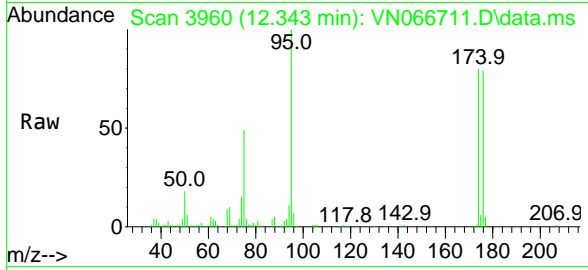
Ion	Ratio	Lower	Upper
43	100		
58	54.9	41.8	62.6
57	18.8	14.9	22.3





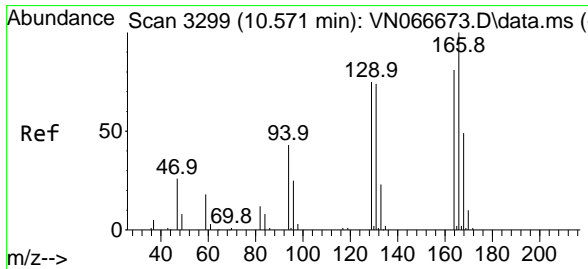
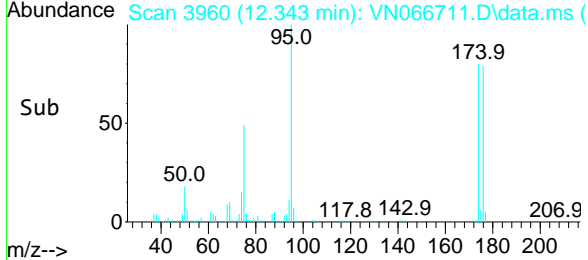
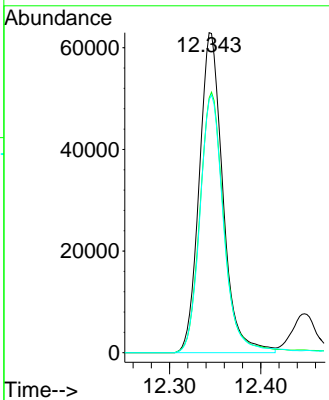
#60
 4-Bromofluorobenzene
 Concen: 29.70 ug/l
 RT: 12.343 min Scan# 3960
 Delta R.T. -0.003 min
 Lab File: VN066711.D
 Acq: 22 Apr 2021 13:52

Instrument :
 MSVOA_N
 ClientSampled :

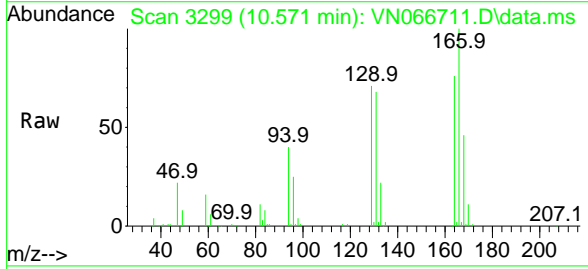


Tgt Ion: 95 Resp: 113107

Ion	Ratio	Lower	Upper
95	100		
174	82.3	68.1	102.1
176	81.3	65.4	98.0

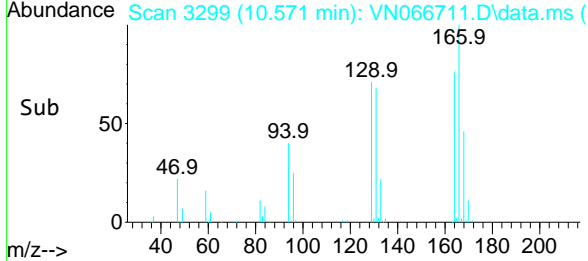
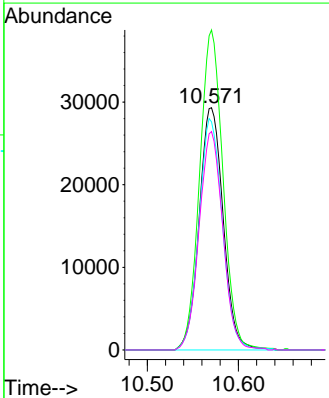


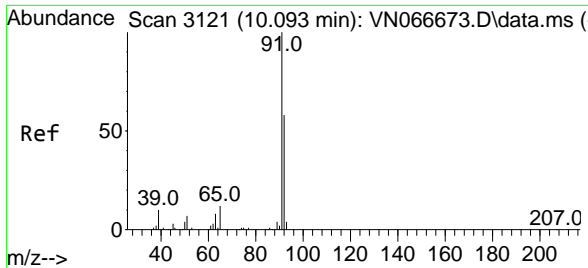
#61
 Tetrachloroethene
 Concen: 20.00 ug/l
 RT: 10.571 min Scan# 3299
 Delta R.T. -0.000 min
 Lab File: VN066711.D
 Acq: 22 Apr 2021 13:52



Tgt Ion: 164 Resp: 53641

Ion	Ratio	Lower	Upper
164	100		
166	132.1	100.5	150.7
129	94.2	74.7	112.1
131	90.1	69.4	104.2

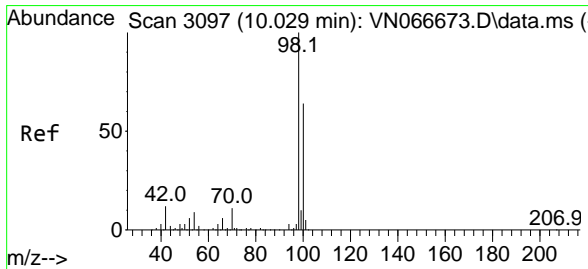
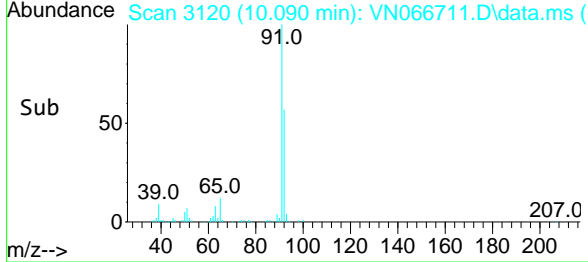
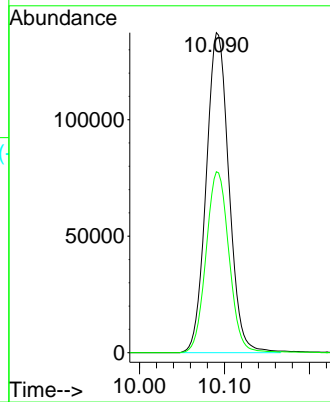
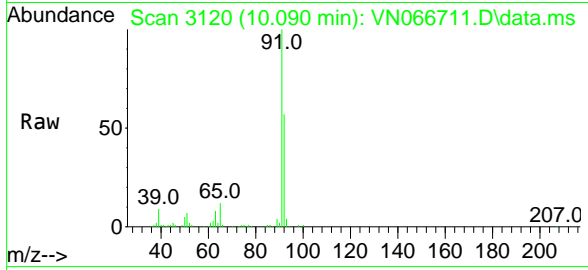




#62
 Toluene
 Concen: 18.50 ug/l
 RT: 10.090 min Scan# 3120
 Delta R.T. -0.003 min
 Lab File: VN066711.D
 Acq: 22 Apr 2021 13:52

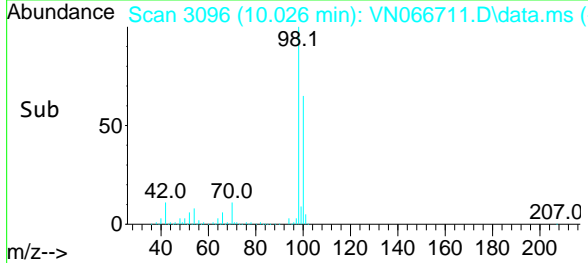
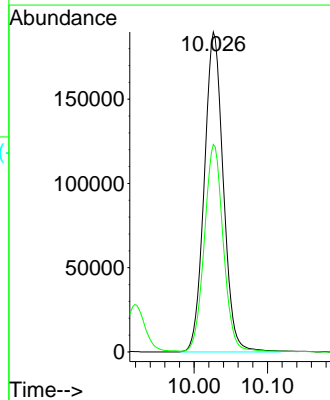
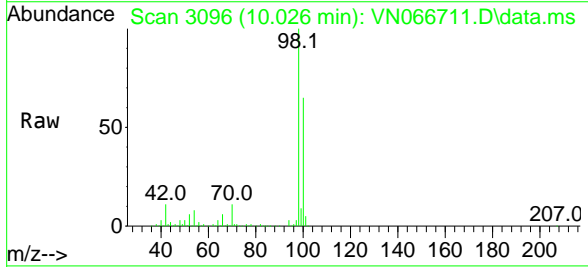
Instrument :
 MSVOA_N
 ClientSampled :

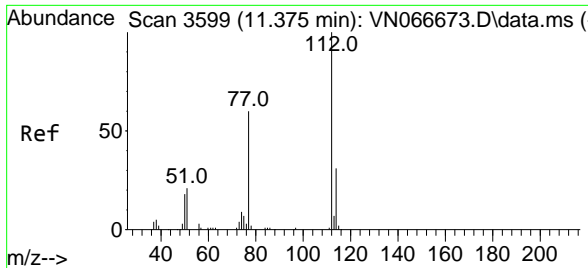
Tgt Ion: 91 Resp: 255054
 Ion Ratio Lower Upper
 91 100
 92 57.0 46.2 69.2



#63
 Toluene-d8
 Concen: 30.65 ug/l
 RT: 10.026 min Scan# 3096
 Delta R.T. -0.003 min
 Lab File: VN066711.D
 Acq: 22 Apr 2021 13:52

Tgt Ion: 98 Resp: 342577
 Ion Ratio Lower Upper
 98 100
 100 64.0 51.1 76.7

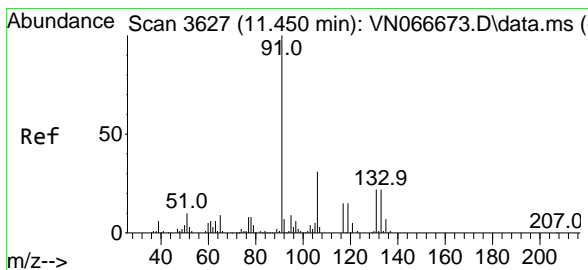
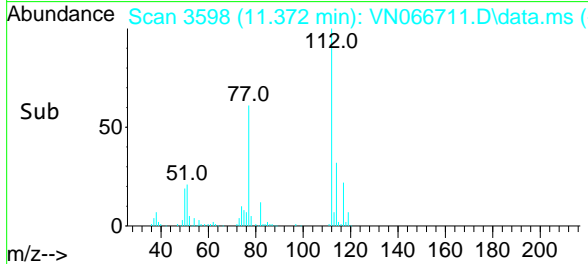
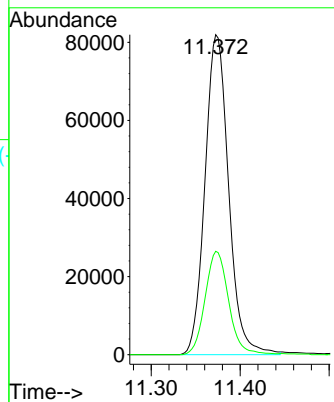
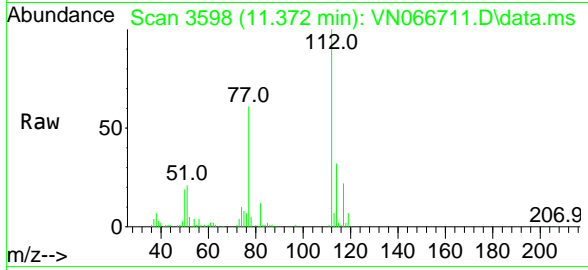




#64
 Chlorobenzene
 Concen: 18.33 ug/l
 RT: 11.372 min Scan# 3598
 Delta R.T. -0.003 min
 Lab File: VN066711.D
 Acq: 22 Apr 2021 13:52

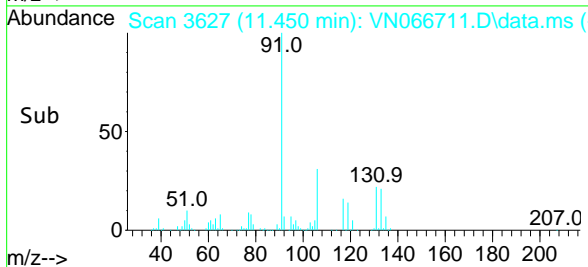
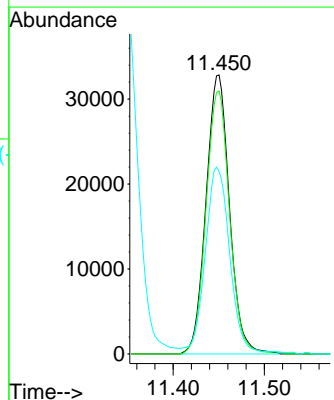
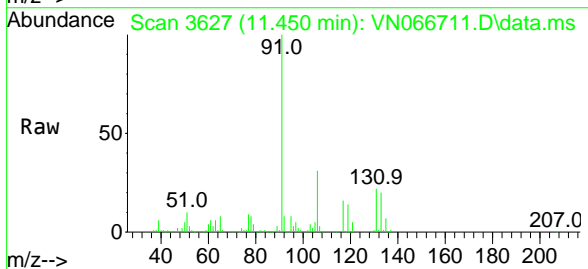
Instrument :
 MSVOA_N
 ClientSampled :

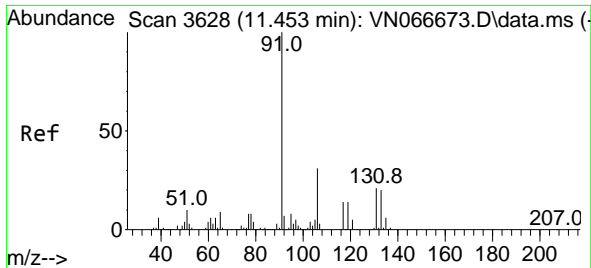
Tgt Ion:112 Resp: 151233
 Ion Ratio Lower Upper
 112 100
 114 32.3 25.6 38.4



#65
 1,1,1,2-Tetrachloroethane
 Concen: 18.97 ug/l
 RT: 11.450 min Scan# 3627
 Delta R.T. 0.000 min
 Lab File: VN066711.D
 Acq: 22 Apr 2021 13:52

Tgt Ion:131 Resp: 58745
 Ion Ratio Lower Upper
 131 100
 133 94.1 0.0 188.4
 119 68.5 0.0 134.4

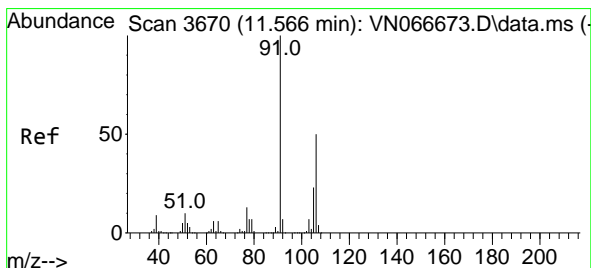
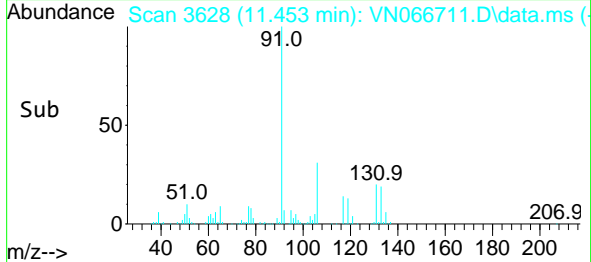
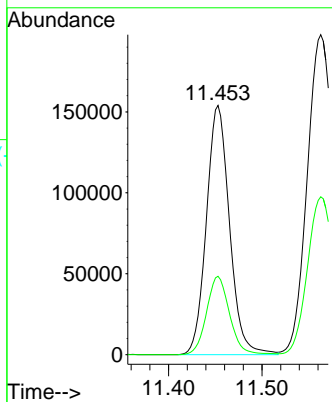
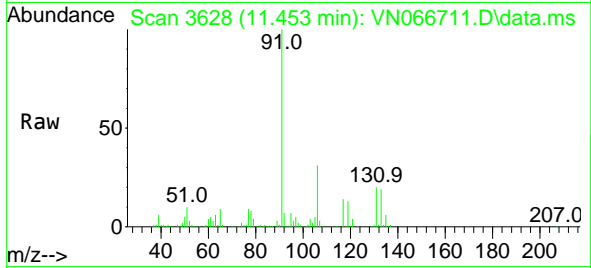




#66
 Ethyl Benzene
 Concen: 18.00 ug/l
 RT: 11.453 min Scan# 3628
 Delta R.T. -0.000 min
 Lab File: VN066711.D
 Acq: 22 Apr 2021 13:52

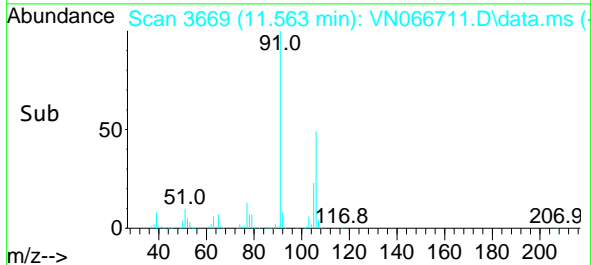
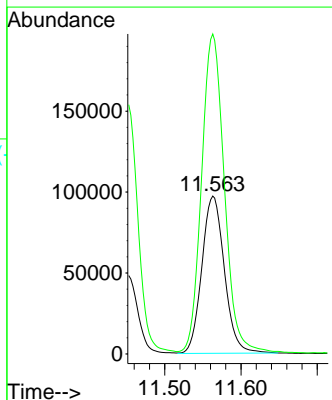
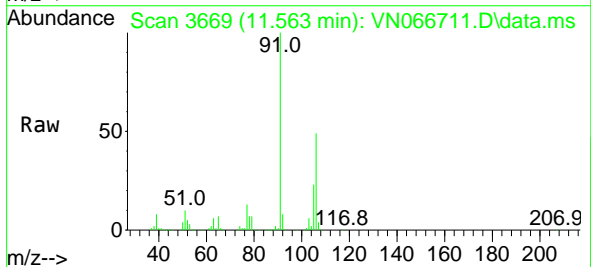
Instrument :
 MSVOA_N
 ClientSampled :

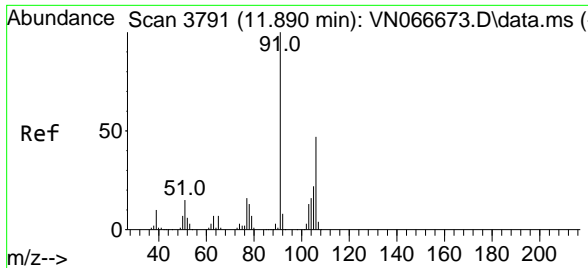
Tgt Ion: 91 Resp: 265155
 Ion Ratio Lower Upper
 91 100
 106 31.5 25.5 38.3



#67
 m/p-Xylenes
 Concen: 36.14 ug/l
 RT: 11.563 min Scan# 3669
 Delta R.T. -0.003 min
 Lab File: VN066711.D
 Acq: 22 Apr 2021 13:52

Tgt Ion:106 Resp: 199885
 Ion Ratio Lower Upper
 106 100
 91 202.4 164.8 247.2

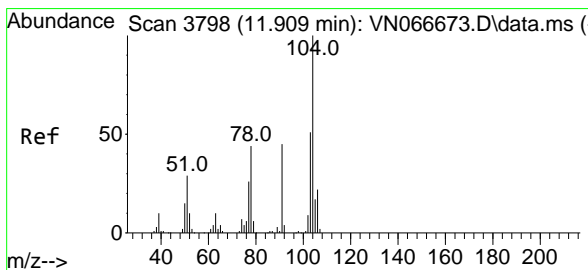
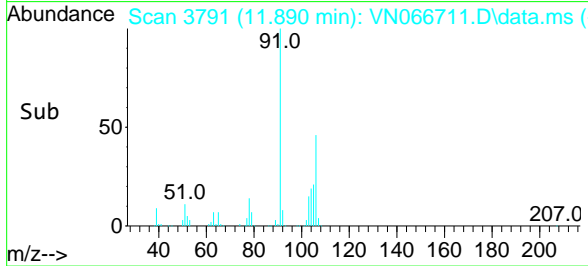
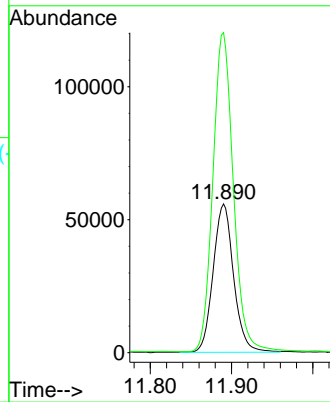
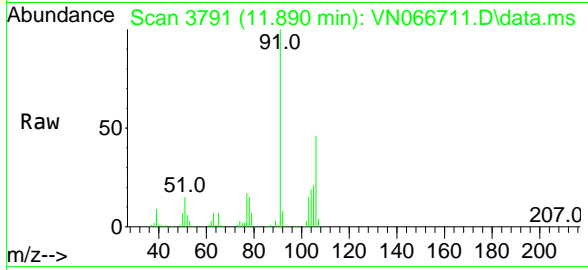




#68
 o-Xylene
 Concen: 18.26 ug/l
 RT: 11.890 min Scan# 3791
 Delta R.T. 0.000 min
 Lab File: VN066711.D
 Acq: 22 Apr 2021 13:52

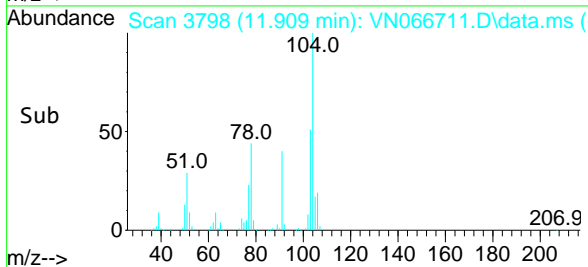
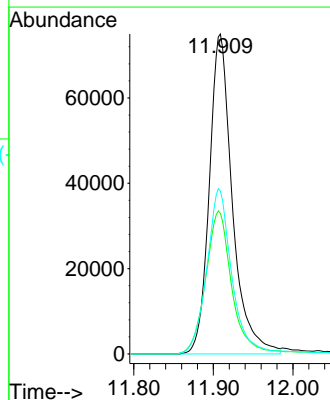
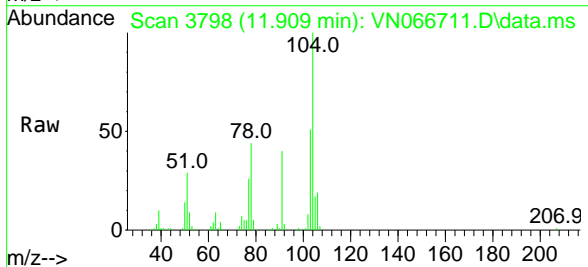
Instrument :
 MSVOA_N
 ClientSampled :

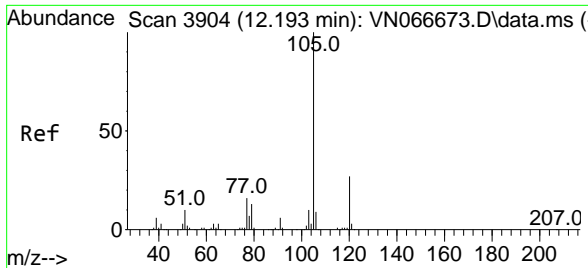
Tgt Ion:106 Resp: 97941
 Ion Ratio Lower Upper
 106 100
 91 215.1 107.1 321.4



#69
 Styrene
 Concen: 17.55 ug/l
 RT: 11.909 min Scan# 3798
 Delta R.T. -0.000 min
 Lab File: VN066711.D
 Acq: 22 Apr 2021 13:52

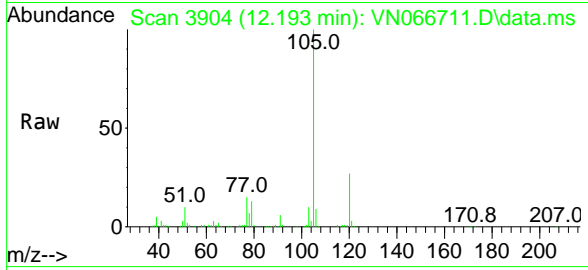
Tgt Ion:104 Resp: 151304
 Ion Ratio Lower Upper
 104 100
 78 50.4 41.0 61.6
 103 55.8 43.7 65.5



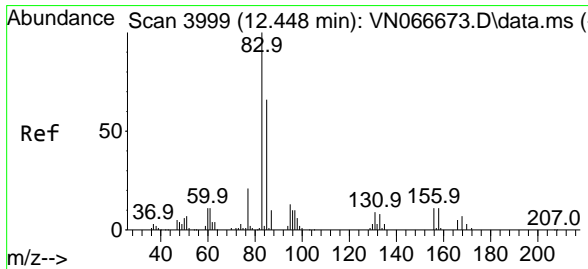
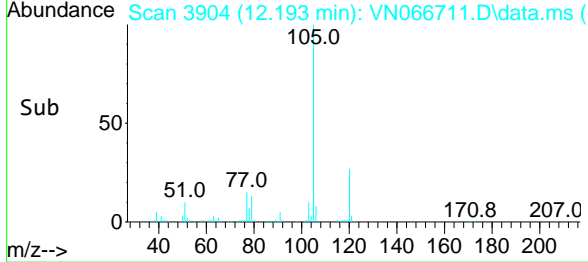
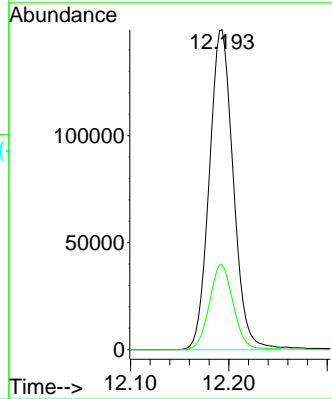


#70
 Isopropylbenzene
 Concen: 18.08 ug/l
 RT: 12.193 min Scan# 3904
 Delta R.T. 0.000 min
 Lab File: VN066711.D
 Acq: 22 Apr 2021 13:52

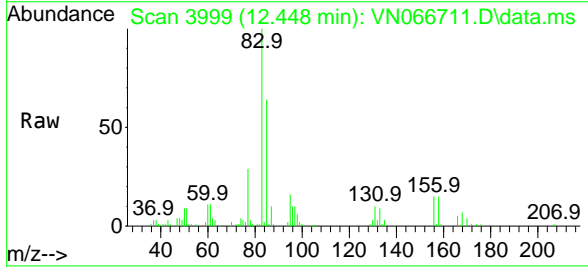
Instrument :
 MSVOA_N
 ClientSampled :



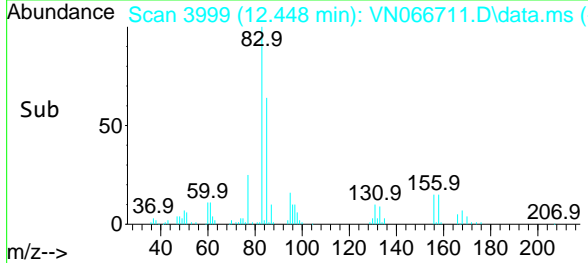
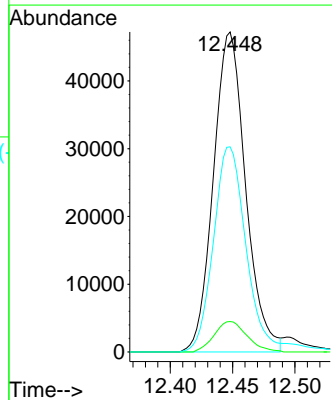
Tgt Ion:105 Resp: 253371
 Ion Ratio Lower Upper
 105 100
 120 26.4 18.7 34.7

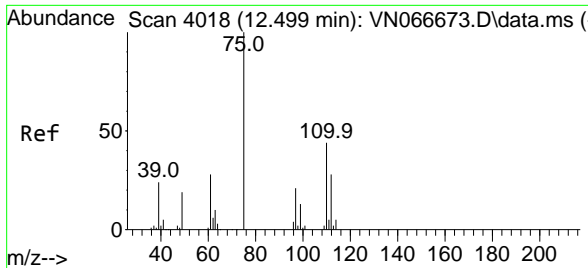


#71
 1,1,2,2-Tetrachloroethane
 Concen: 18.33 ug/l
 RT: 12.448 min Scan# 3999
 Delta R.T. -0.000 min
 Lab File: VN066711.D
 Acq: 22 Apr 2021 13:52



Tgt Ion: 83 Resp: 84828
 Ion Ratio Lower Upper
 83 100
 131 9.7 4.9 14.6
 85 66.5 31.4 94.2

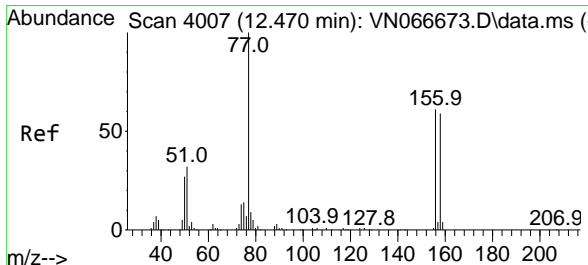
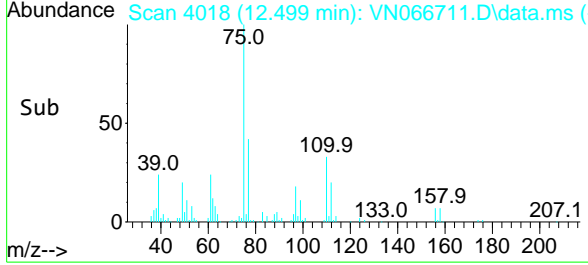
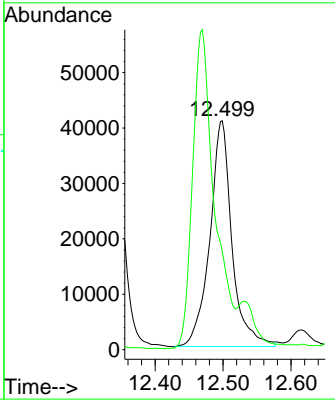
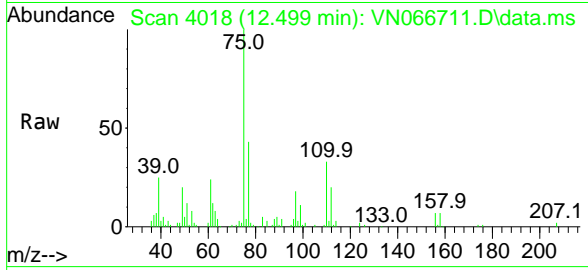




#72
 1,2,3-Trichloropropane
 Concen: 22.90 ug/l
 RT: 12.499 min Scan# 4018
 Delta R.T. -0.000 min
 Lab File: VN066711.D
 Acq: 22 Apr 2021 13:52

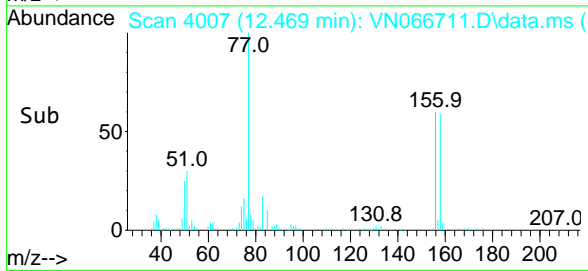
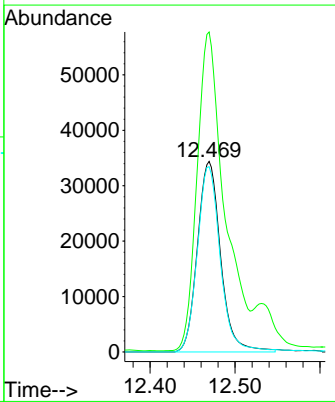
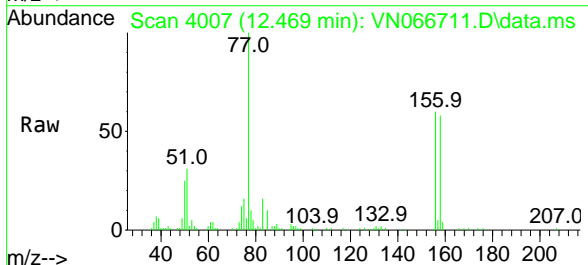
Instrument :
 MSVOA_N
 ClientSampled :

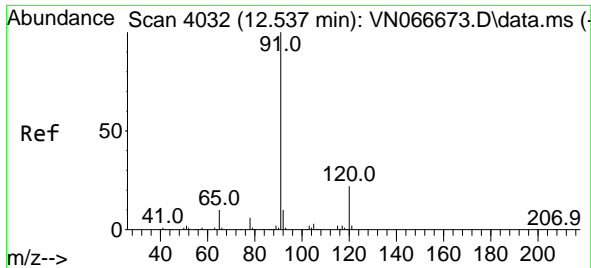
Tgt Ion: 75 Resp: 92240
 Ion Ratio Lower Upper
 75 100
 77 138.8 0.0 310.8



#73
 Bromobenzene
 Concen: 18.40 ug/l
 RT: 12.469 min Scan# 4007
 Delta R.T. -0.001 min
 Lab File: VN066711.D
 Acq: 22 Apr 2021 13:52

Tgt Ion: 156 Resp: 65218
 Ion Ratio Lower Upper
 156 100
 77 196.3 0.0 399.6
 158 96.3 0.0 192.8

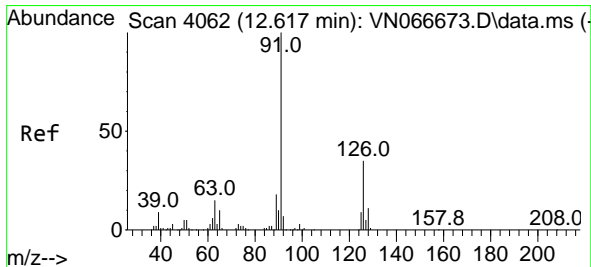
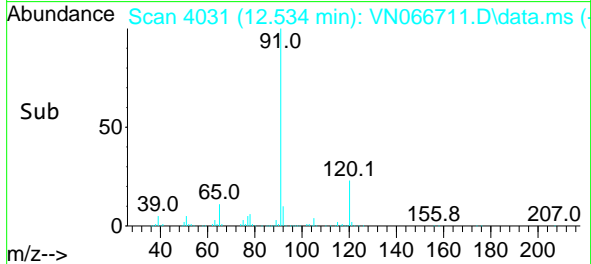
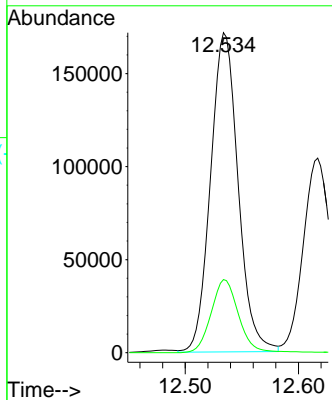
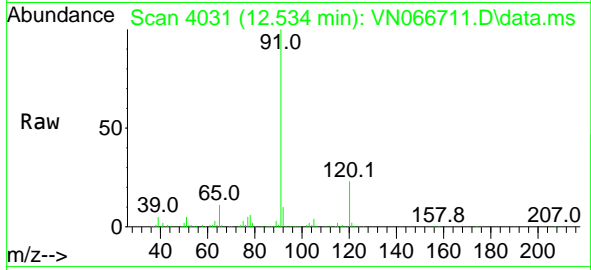




#74
 n-propylbenzene
 Concen: 17.82 ug/l
 RT: 12.534 min Scan# 4031
 Delta R.T. -0.003 min
 Lab File: VN066711.D
 Acq: 22 Apr 2021 13:52

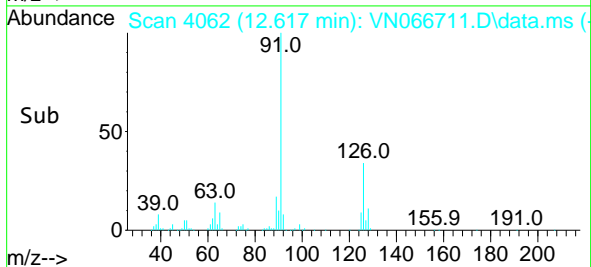
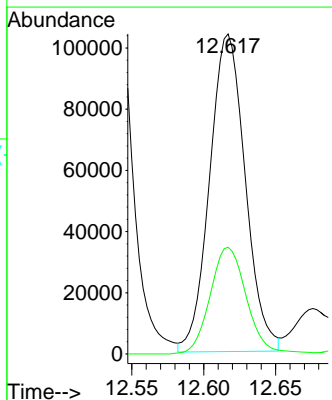
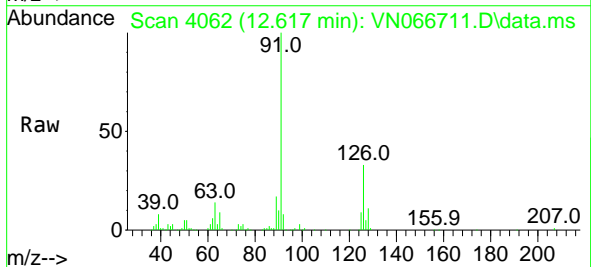
Instrument :
 MSVOA_N
 ClientSampled :

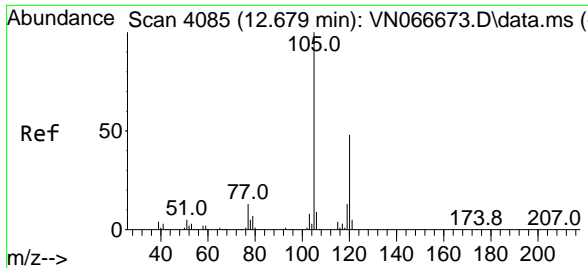
Tgt Ion: 91 Resp: 289834
 Ion Ratio Lower Upper
 91 100
 120 22.9 0.0 45.2



#75
 2-Chlorotoluene
 Concen: 18.37 ug/l
 RT: 12.617 min Scan# 4062
 Delta R.T. -0.000 min
 Lab File: VN066711.D
 Acq: 22 Apr 2021 13:52

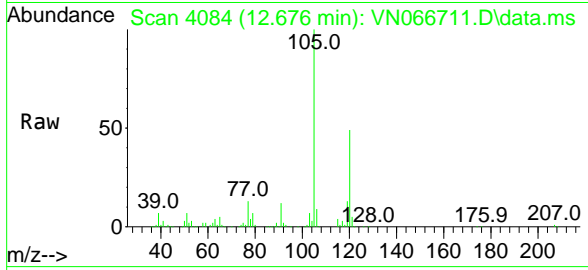
Tgt Ion: 91 Resp: 178804
 Ion Ratio Lower Upper
 91 100
 126 34.4 0.0 68.6



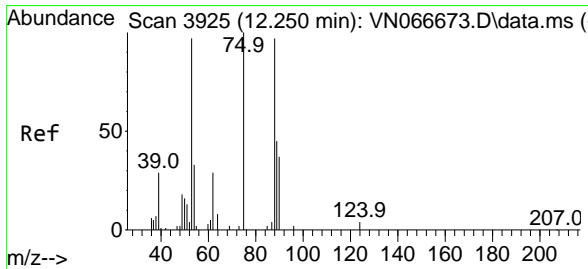
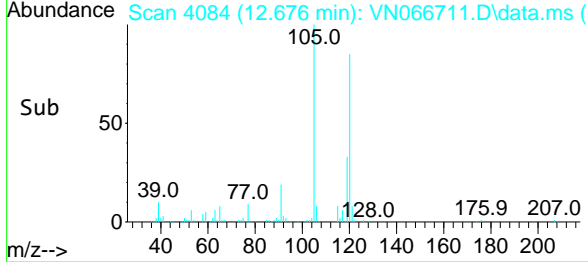
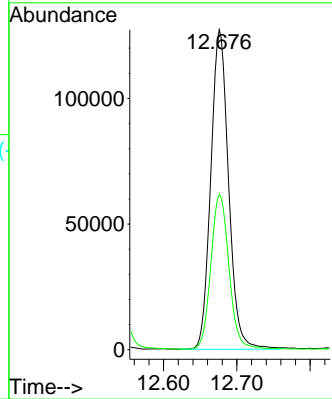


#76
 1,3,5-Trimethylbenzene
 Concen: 18.09 ug/l
 RT: 12.676 min Scan# 4084
 Delta R.T. -0.003 min
 Lab File: VN066711.D
 Acq: 22 Apr 2021 13:52

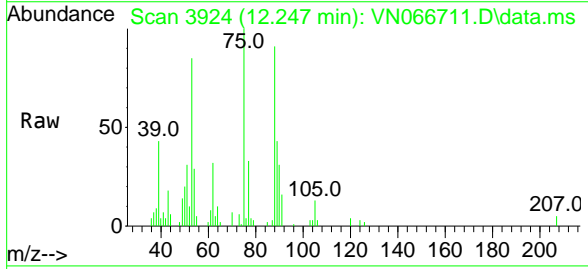
Instrument :
 MSVOA_N
 ClientSampled :



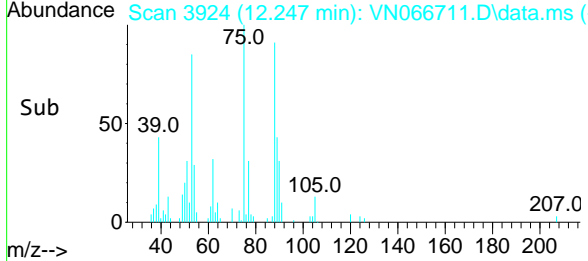
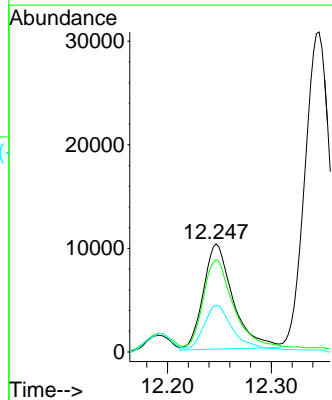
Tgt Ion:105 Resp: 214429
 Ion Ratio Lower Upper
 105 100
 120 49.1 0.0 98.2

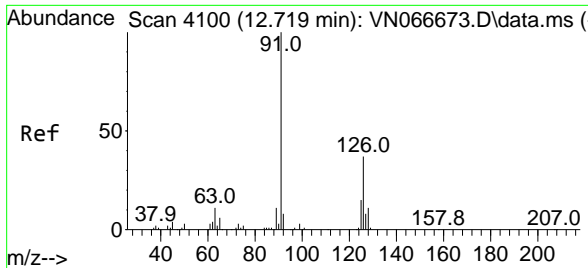


#77
 t-1,4-Dichloro-2-butene
 Concen: 15.91 ug/l
 RT: 12.247 min Scan# 3924
 Delta R.T. -0.003 min
 Lab File: VN066711.D
 Acq: 22 Apr 2021 13:52



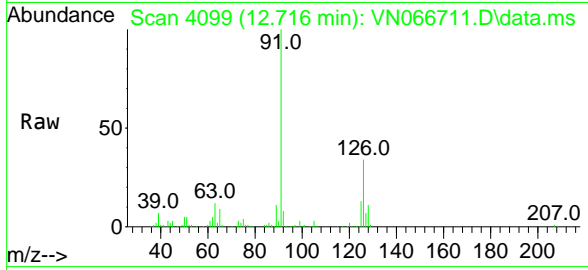
Tgt Ion: 75 Resp: 20237
 Ion Ratio Lower Upper
 75 100
 53 83.1 49.6 149.0
 89 42.1 22.9 68.7



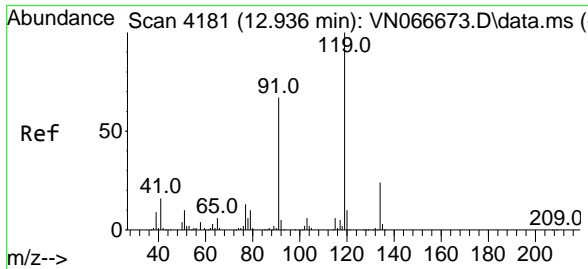
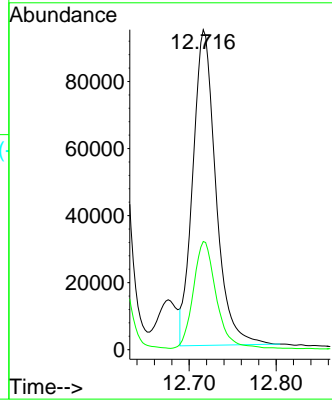
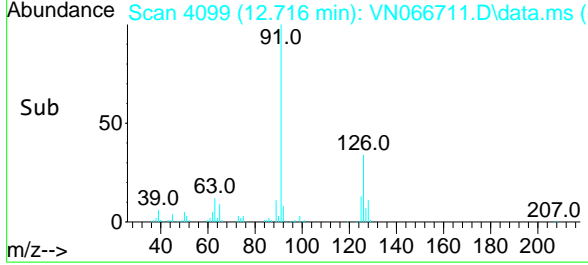


#78
 4-Chlorotoluene
 Concen: 18.15 ug/l
 RT: 12.716 min Scan# 4099
 Delta R.T. -0.003 min
 Lab File: VN066711.D
 Acq: 22 Apr 2021 13:52

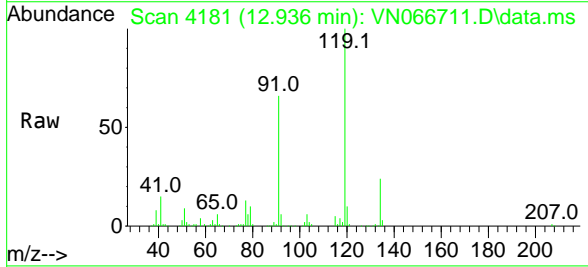
Instrument :
 MSVOA_N
 ClientSampled :



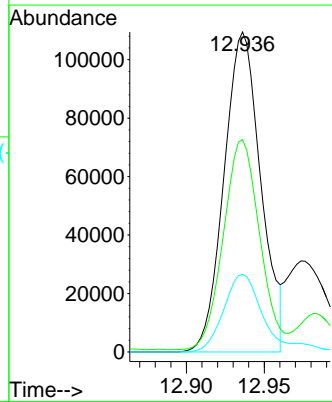
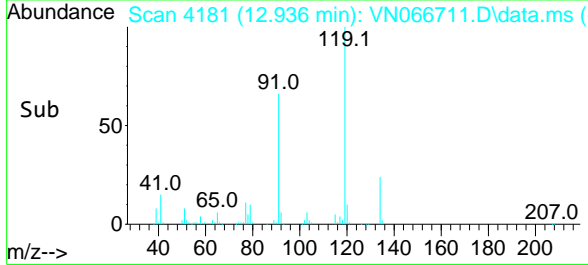
Tgt Ion: 91 Resp: 173290
 Ion Ratio Lower Upper
 91 100
 126 33.7 0.0 65.4

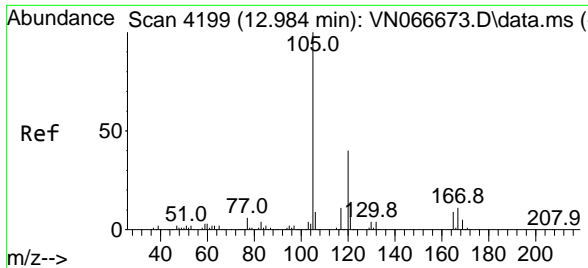


#79
 tert-butylbenzene
 Concen: 18.12 ug/l
 RT: 12.936 min Scan# 4181
 Delta R.T. 0.000 min
 Lab File: VN066711.D
 Acq: 22 Apr 2021 13:52



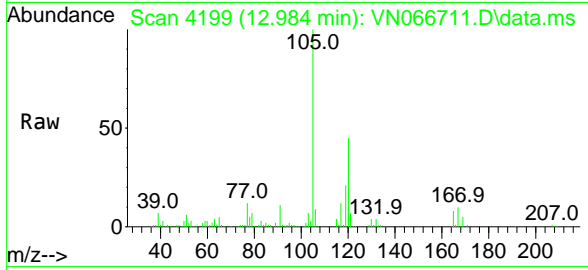
Tgt Ion: 119 Resp: 179785
 Ion Ratio Lower Upper
 119 100
 91 65.0 0.0 133.4
 134 25.0 0.0 51.0



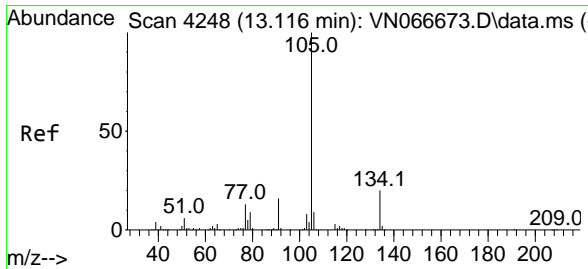
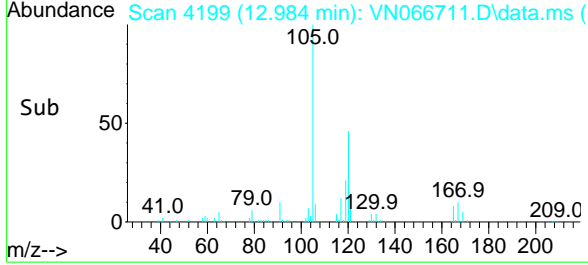
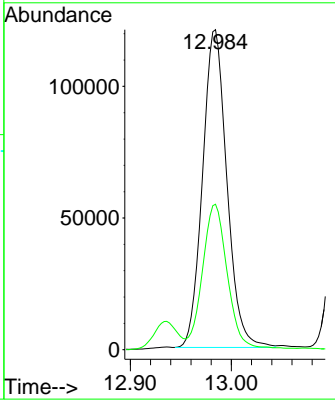


#80
 1,2,4-Trimethylbenzene
 Concen: 17.80 ug/l
 RT: 12.984 min Scan# 4199
 Delta R.T. 0.000 min
 Lab File: VN066711.D
 Acq: 22 Apr 2021 13:52

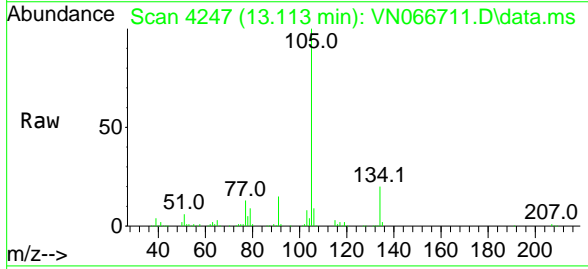
Instrument :
 MSVOA_N
 ClientSampled :



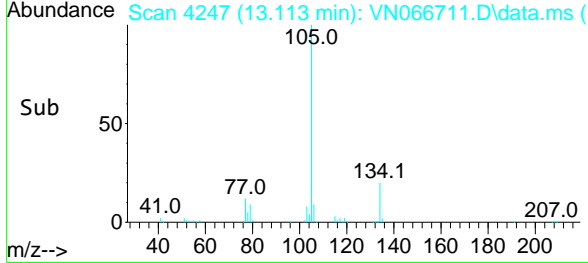
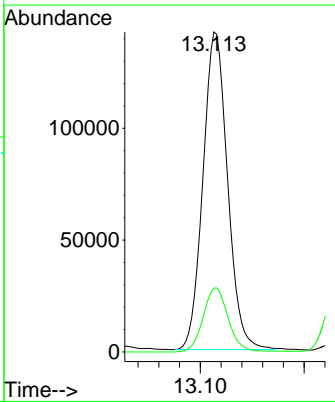
Tgt Ion:105 Resp: 202288
 Ion Ratio Lower Upper
 105 100
 120 44.9 0.0 90.6

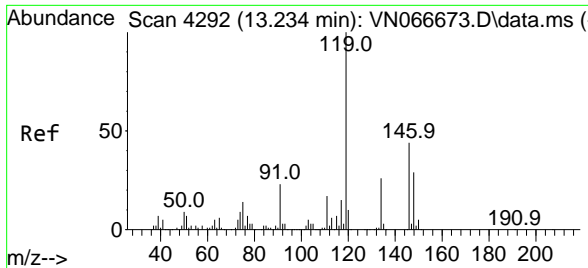


#81
 sec-Butylbenzene
 Concen: 17.70 ug/l
 RT: 13.113 min Scan# 4247
 Delta R.T. -0.003 min
 Lab File: VN066711.D
 Acq: 22 Apr 2021 13:52



Tgt Ion:105 Resp: 233657
 Ion Ratio Lower Upper
 105 100
 134 20.6 0.0 40.0



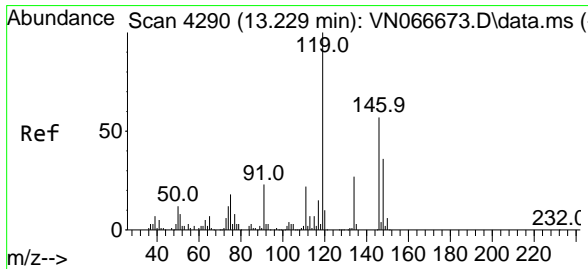
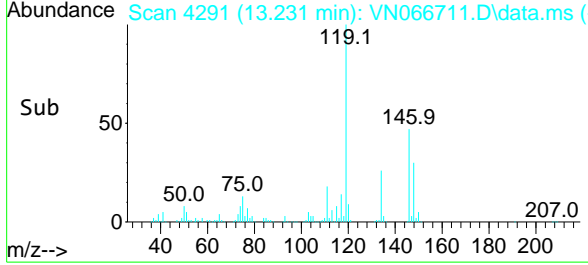
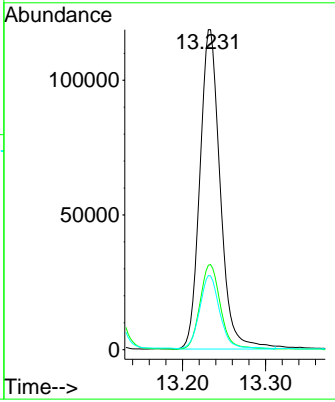
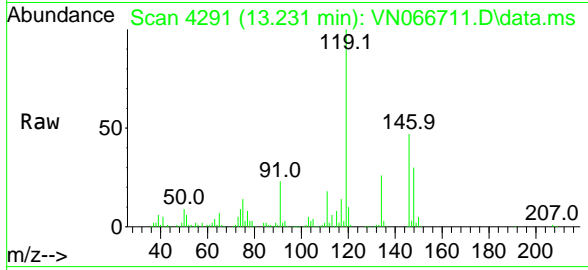


#82
 p-Isopropyltoluene
 Concen: 17.83 ug/l
 RT: 13.231 min Scan# 4291
 Delta R.T. -0.003 min
 Lab File: VN066711.D
 Acq: 22 Apr 2021 13:52

Instrument :
 MSVOA_N
 ClientSampled :

Tgt Ion:119 Resp: 201310

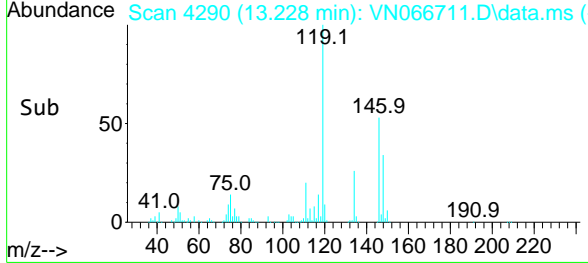
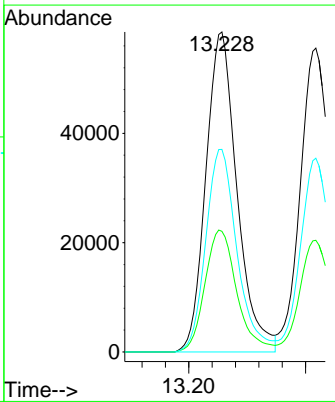
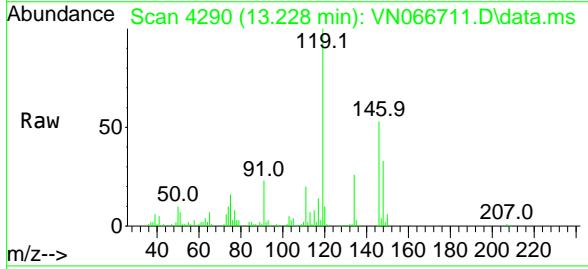
Ion	Ratio	Lower	Upper
119	100		
134	26.5	0.0	53.4
91	22.2	0.0	47.6

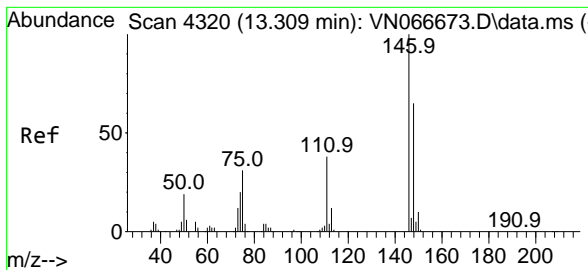


#83
 1,3-Dichlorobenzene
 Concen: 18.44 ug/l
 RT: 13.228 min Scan# 4290
 Delta R.T. -0.001 min
 Lab File: VN066711.D
 Acq: 22 Apr 2021 13:52

Tgt Ion:146 Resp: 108522

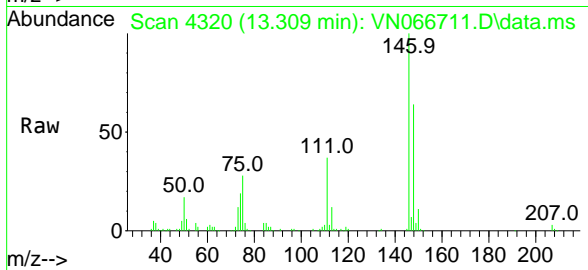
Ion	Ratio	Lower	Upper
146	100		
111	39.1	19.3	57.9
148	63.6	31.9	95.9





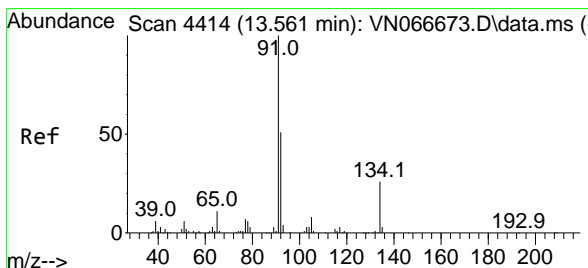
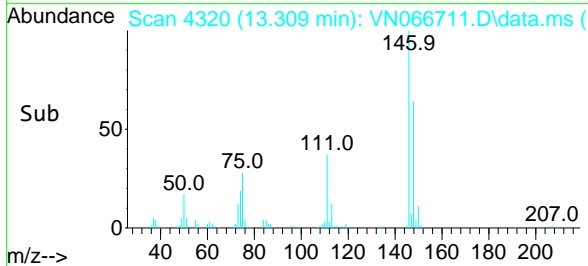
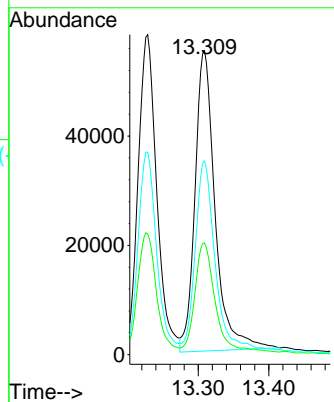
#84
 1,4-Dichlorobenzene
 Concen: 19.14 ug/l
 RT: 13.309 min Scan# 4320
 Delta R.T. -0.000 min
 Lab File: VN066711.D
 Acq: 22 Apr 2021 13:52

Instrument :
 MSVOA_N
 ClientSampled :

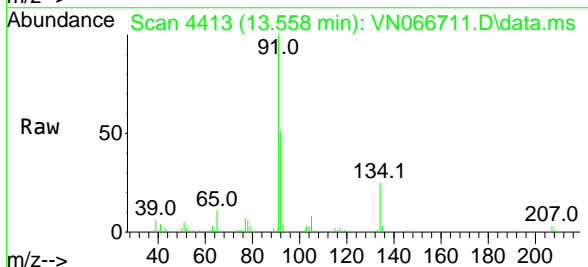


Tgt Ion:146 Resp: 108766

Ion	Ratio	Lower	Upper
146	100		
111	33.4	18.4	55.0
148	56.6	31.9	95.5

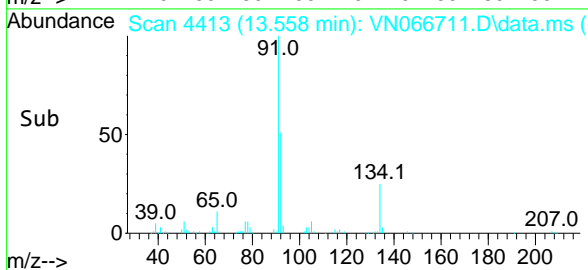
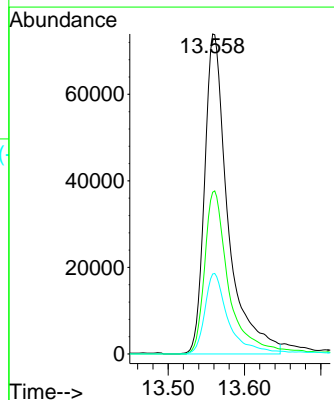


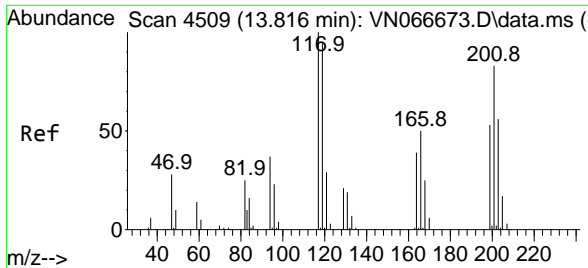
#85
 n-Butylbenzene
 Concen: 16.76 ug/l
 RT: 13.558 min Scan# 4413
 Delta R.T. -0.003 min
 Lab File: VN066711.D
 Acq: 22 Apr 2021 13:52



Tgt Ion: 91 Resp: 157332

Ion	Ratio	Lower	Upper
91	100		
92	52.5	0.0	102.6
134	25.3	0.0	49.0

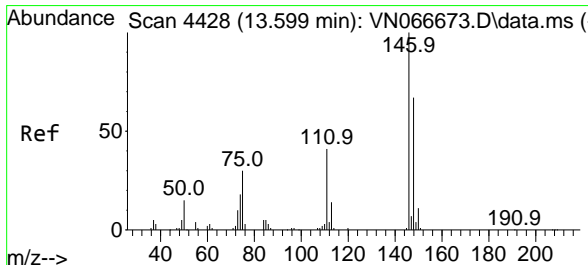
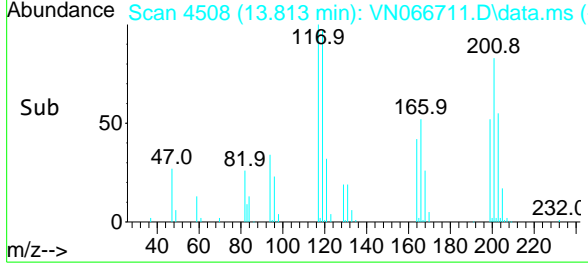
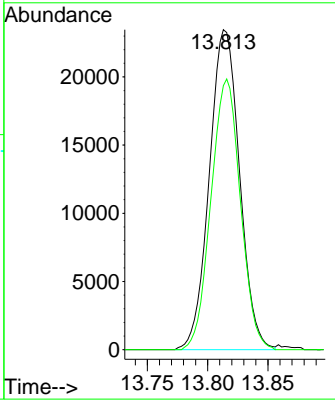
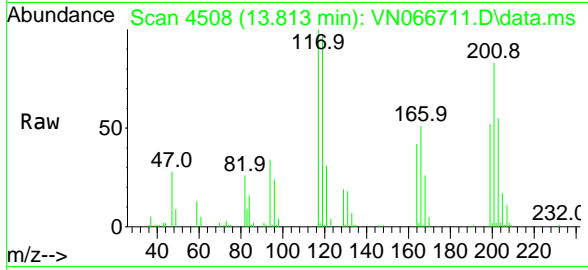




#86
 Hexachloroethane
 Concen: 17.22 ug/l
 RT: 13.813 min Scan# 4508
 Delta R.T. -0.003 min
 Lab File: VN066711.D
 Acq: 22 Apr 2021 13:52

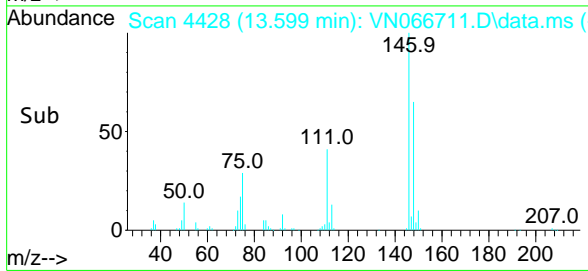
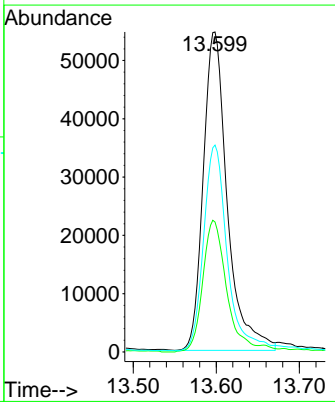
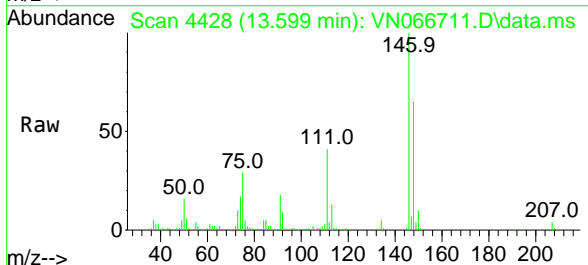
Instrument :
 MSVOA_N
 ClientSampled :

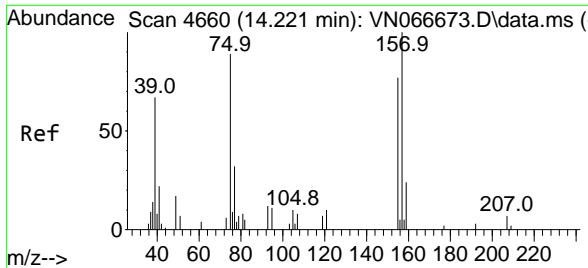
Tgt Ion:117 Resp: 40949
 Ion Ratio Lower Upper
 117 100
 201 82.3 43.3 129.8



#87
 1,2-Dichlorobenzene
 Concen: 18.99 ug/l
 RT: 13.599 min Scan# 4428
 Delta R.T. -0.001 min
 Lab File: VN066711.D
 Acq: 22 Apr 2021 13:52

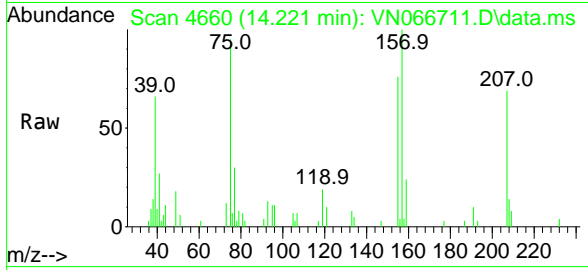
Tgt Ion:146 Resp: 109751
 Ion Ratio Lower Upper
 146 100
 111 40.8 20.3 60.9
 148 63.5 32.0 96.0





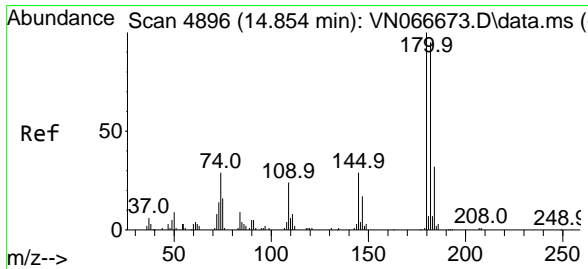
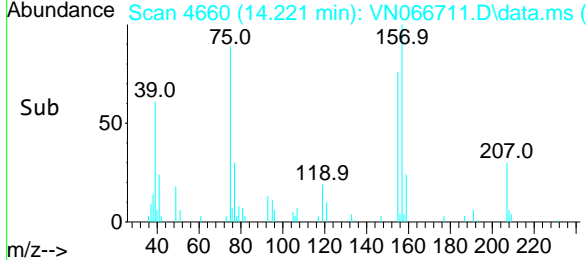
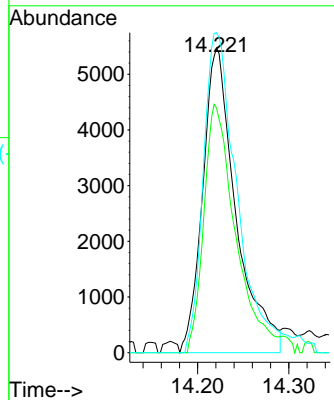
#88
 1,2-Dibromo-3-Chloropropane
 Concen: 17.44 ug/l
 RT: 14.221 min Scan# 4660
 Delta R.T. -0.000 min
 Lab File: VN066711.D
 Acq: 22 Apr 2021 13:52

Instrument :
 MSVOA_N
 ClientSampled :

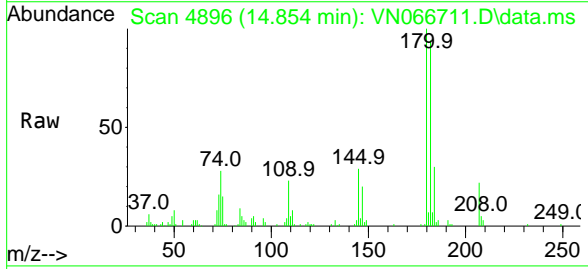


Tgt Ion: 75 Resp: 13865

Ion	Ratio	Lower	Upper
75	100		
155	77.3	68.3	102.5
157	107.5	87.8	131.6

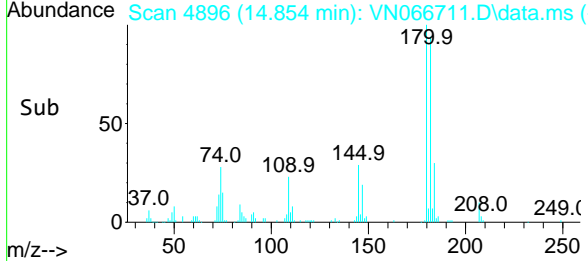
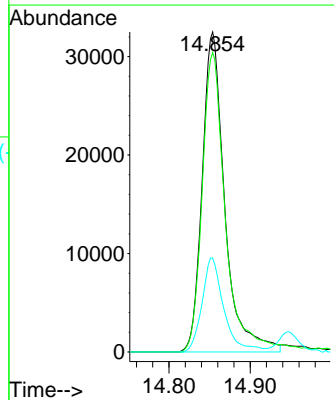


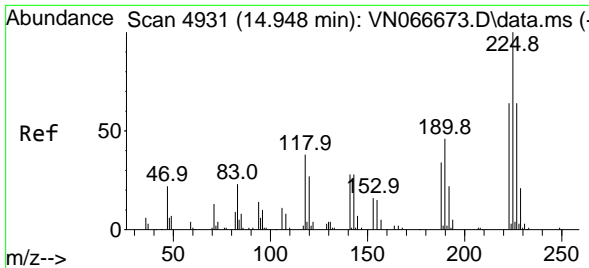
#89
 1,2,4-Trichlorobenzene
 Concen: 18.74 ug/l
 RT: 14.854 min Scan# 4896
 Delta R.T. -0.000 min
 Lab File: VN066711.D
 Acq: 22 Apr 2021 13:52



Tgt Ion: 180 Resp: 62596

Ion	Ratio	Lower	Upper
180	100		
182	97.0	74.3	111.5
145	28.4	23.4	35.0

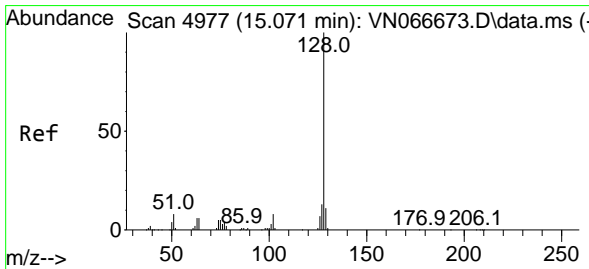
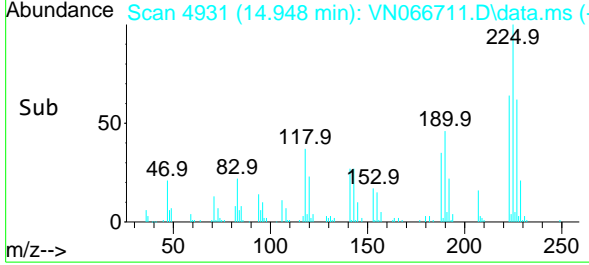
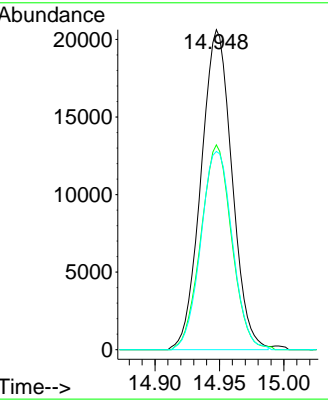
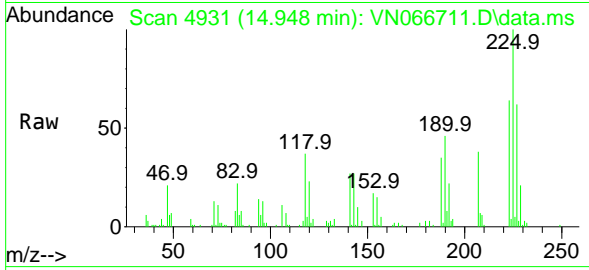




#90
 Hexachlorobutadiene
 Concen: 18.38 ug/l
 RT: 14.948 min Scan# 4931
 Delta R.T. -0.000 min
 Lab File: VN066711.D
 Acq: 22 Apr 2021 13:52

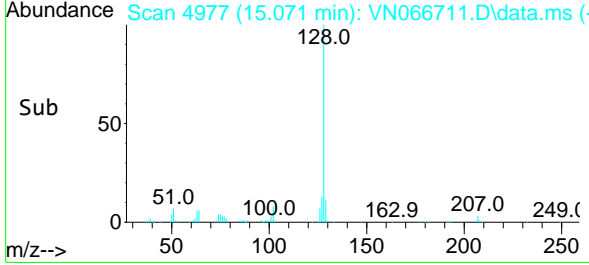
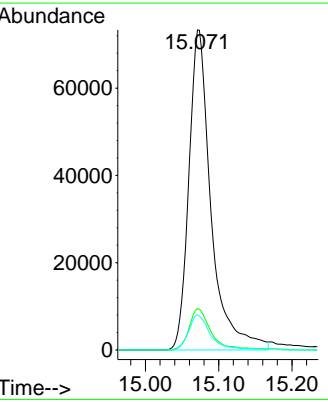
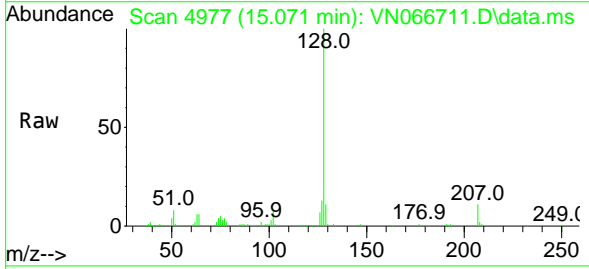
Instrument :
 MSVOA_N
 ClientSampled :

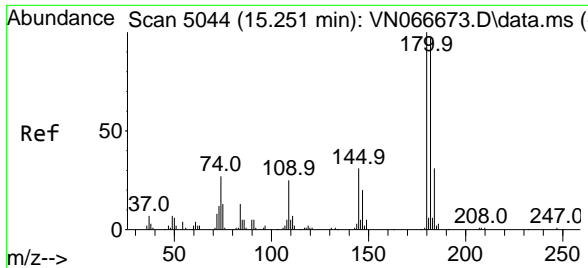
Tgt Ion	Resp	Lower	Upper
225	100		
223	63.8	0.0	124.6
227	63.4	0.0	126.6



#91
 Naphthalene
 Concen: 19.25 ug/l
 RT: 15.071 min Scan# 4977
 Delta R.T. -0.000 min
 Lab File: VN066711.D
 Acq: 22 Apr 2021 13:52

Tgt Ion	Resp	Lower	Upper
128	100		
127	12.4	10.2	15.2
129	10.7	8.6	13.0





#92
 1,2,3-Trichlorobenzene
 Concen: 19.50 ug/l
 RT: 15.251 min Scan# 5044
 Delta R.T. -0.000 min
 Lab File: VN066711.D
 Acq: 22 Apr 2021 13:52

Instrument :
 MSVOA_N
 ClientSampled :

Tgt Ion	Resp	Lower	Upper
180	61606		
180	100		
182	94.3	0.0	190.0
145	28.9	0.0	60.8

