

Data Path : Z:\voasrv\HPCHEM1\MSVOA_N\Data\VN042221\
 Data File : VN066721.D
 Acq On : 22 Apr 2021 17:48
 Operator : JC/MD
 Sample : M2090-14
 Misc : 5.00mL/MSVOA_N/WATER
 ALS Vial : 17 Sample Multiplier: 1

Instrument :
 MSVOA_N
 ClientSampleId :
 SEDGWICK-COMP-3

Quant Time: Apr 23 06:36:41 2021
 Quant Method : Z:\voasrv\HPCHEM1\MSVOA_N\methods\82N042121W.M
 Quant Title : SW846 8260
 QLast Update : Thu Apr 22 08:25:55 2021
 Response via : Initial Calibration

Compound	R.T.	QIon	Response	Conc	Units	Dev(Min)

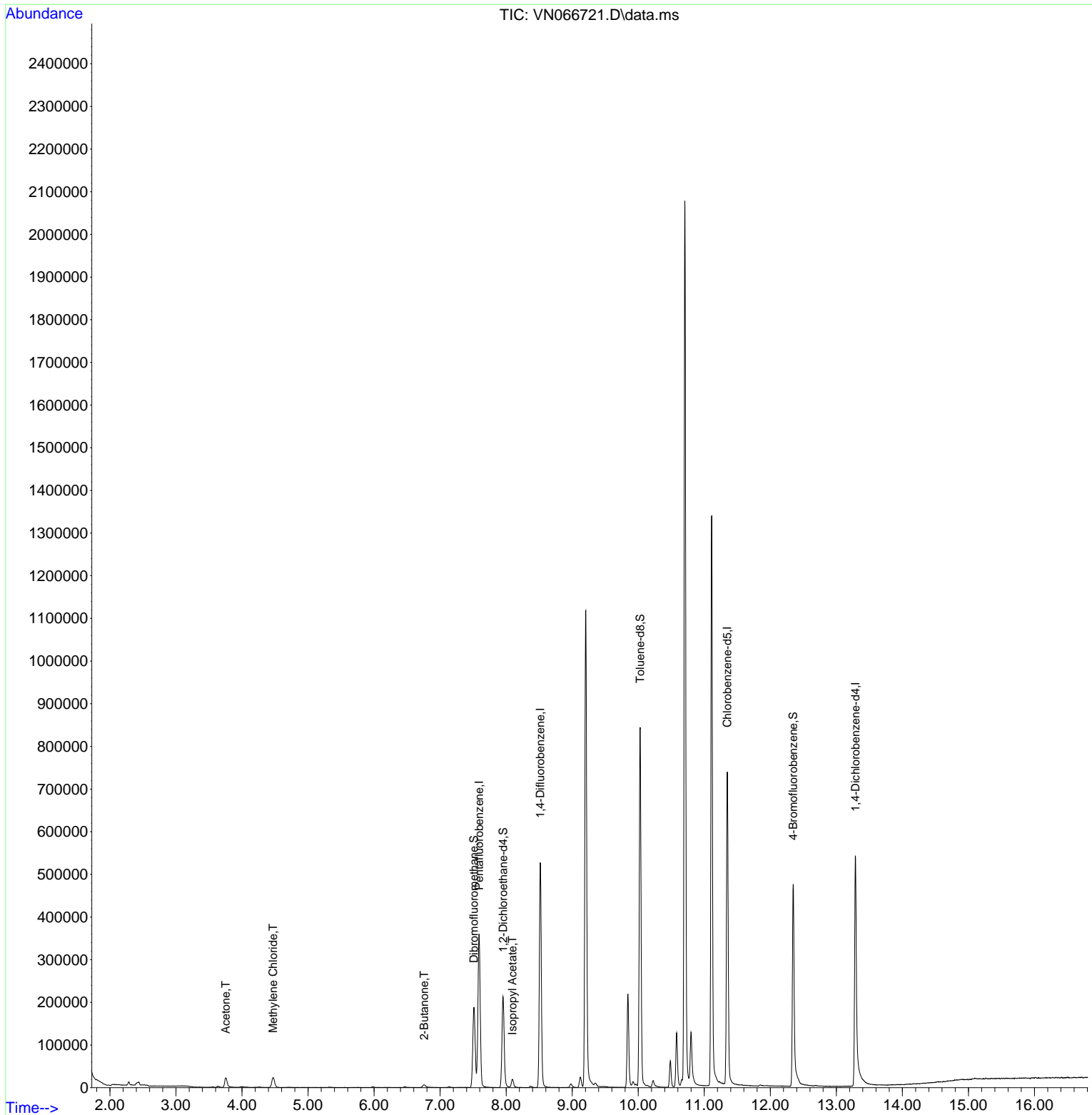
Internal Standards						
1) Pentafluorobenzene	7.591	168	317204	50.00	ug/l	0.00
34) 1,4-Difluorobenzene	8.516	114	486696	50.00	ug/l	0.00
63) Chlorobenzene-d5	11.349	117	456613	50.00	ug/l	0.00
72) 1,4-Dichlorobenzene-d4	13.288	152	199570	50.00	ug/l	0.00
System Monitoring Compounds						
33) 1,2-Dichloroethane-d4	7.953	65	184041	47.49	ug/l	0.00
Spiked Amount	50.000	Range	61 - 141	Recovery	=	94.98%
35) Dibromofluoromethane	7.511	113	151325	49.65	ug/l	0.00
Spiked Amount	50.000	Range	69 - 133	Recovery	=	99.30%
50) Toluene-d8	10.029	98	599906	50.47	ug/l	0.00
Spiked Amount	50.000	Range	65 - 126	Recovery	=	100.94%
62) 4-Bromofluorobenzene	12.346	95	200050	49.15	ug/l	0.00
Spiked Amount	50.000	Range	58 - 135	Recovery	=	98.30%
Target Compounds						
						Qvalue
16) Acetone	3.753	43	40418	27.86	ug/l	98
20) Methylene Chloride	4.469	84	18341	4.25	ug/l	97
25) 2-Butanone	6.757	43	13200	6.34	ug/l #	86
43) Isopropyl Acetate	8.093	43	24469	3.22	ug/l #	82

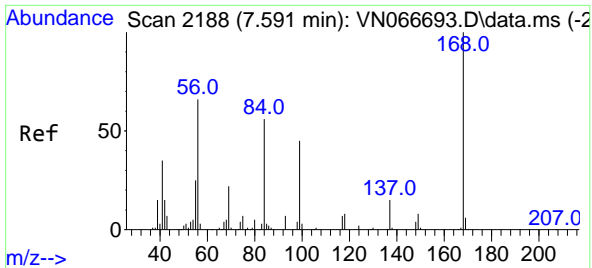
(#) = qualifier out of range (m) = manual integration (+) = signals summed

Data Path : Z:\voasrv\HPCHEM1\MSVOA_N\Data\VN042221\
 Data File : VN066721.D
 Acq On : 22 Apr 2021 17:48
 Operator : JC/MD
 Sample : M2090-14
 Misc : 5.00mL/MSVOA_N/WATER
 ALS Vial : 17 Sample Multiplier: 1

Instrument :
 MSVOA_N
ClientSampleId :
 SEDGWICK-COMP-3

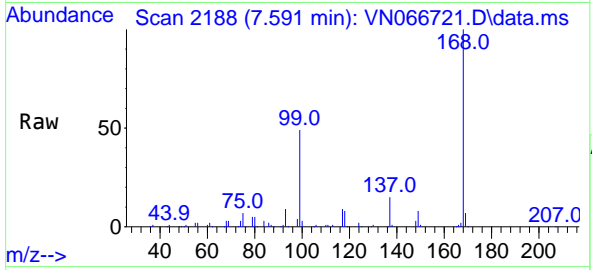
Quant Time: Apr 23 06:36:41 2021
 Quant Method : Z:\voasrv\HPCHEM1\MSVOA_N\methods\82N042121W.M
 Quant Title : SW846 8260
 QLast Update : Thu Apr 22 08:25:55 2021
 Response via : Initial Calibration



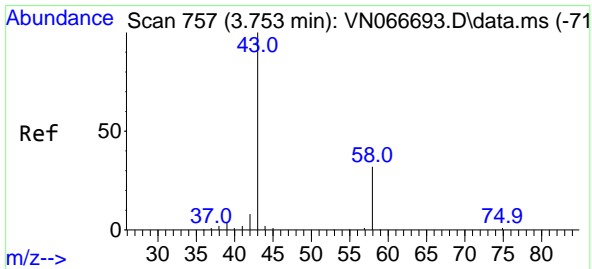
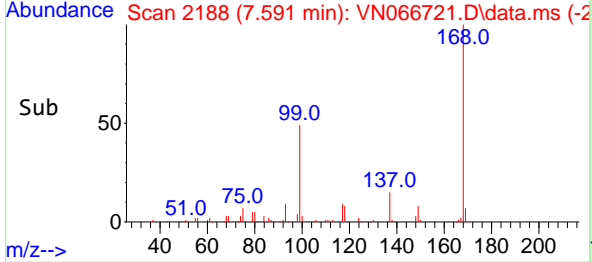
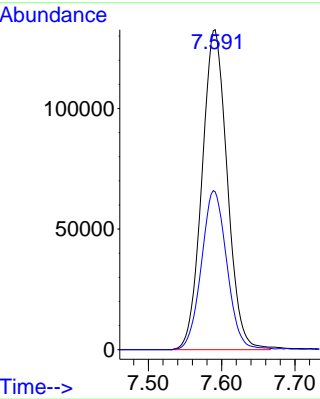


#1
 Pentafluorobenzene
 Concen: 50.00 ug/l
 RT: 7.591 min Scan# 2188
 Delta R.T. 0.000 min
 Lab File: VN066721.D
 Acq: 22 Apr 2021 17:48

Instrument :
 MSVOA_N
ClientSampled :
 SEDGWICK-COMP-3

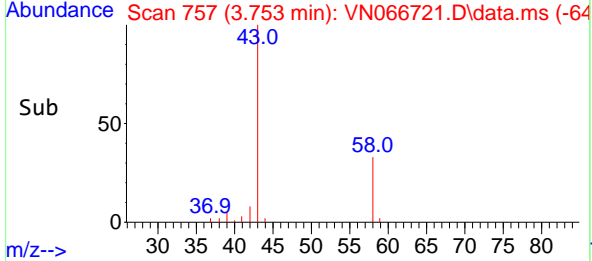
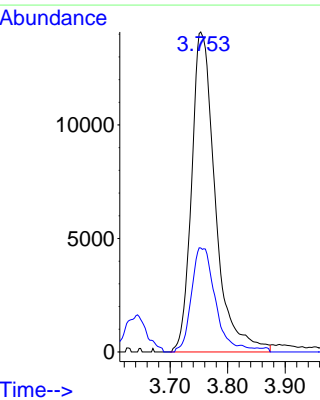
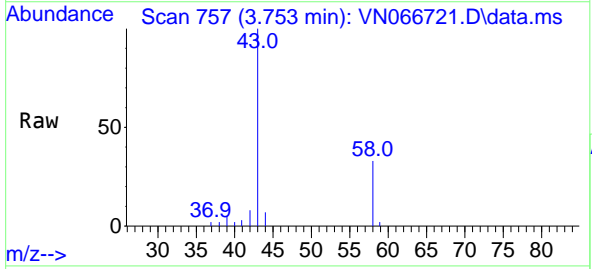


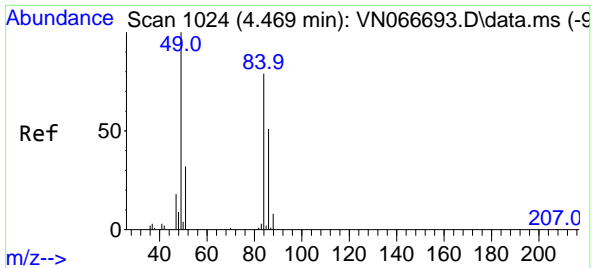
Tgt Ion:168 Resp: 317204
 Ion Ratio Lower Upper
 168 100
 99 49.3 42.6 63.8



#16
 Acetone
 Concen: 27.86 ug/l
 RT: 3.753 min Scan# 757
 Delta R.T. 0.000 min
 Lab File: VN066721.D
 Acq: 22 Apr 2021 17:48

Tgt Ion: 43 Resp: 40418
 Ion Ratio Lower Upper
 43 100
 58 32.5 27.0 40.6



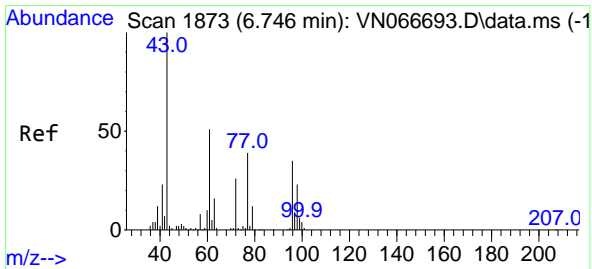
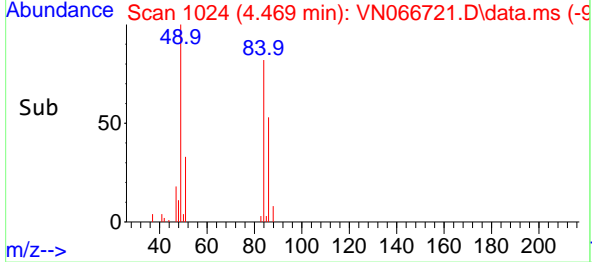
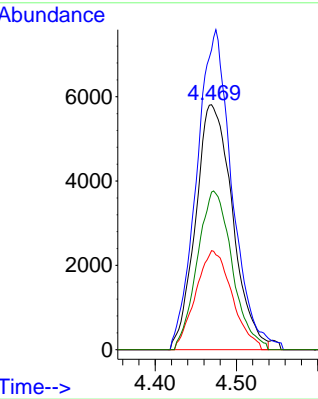
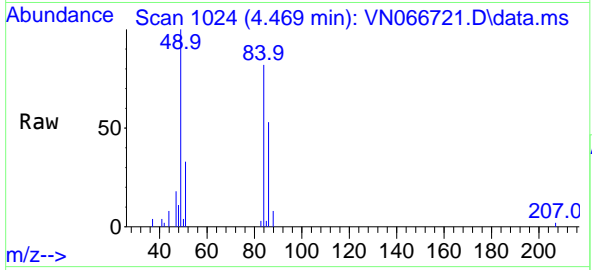


#20
 Methylene Chloride
 Concen: 4.25 ug/l
 RT: 4.469 min Scan# 1024
 Delta R.T. 0.000 min
 Lab File: VN066721.D
 Acq: 22 Apr 2021 17:48

Instrument :
 MSVOA_N
 ClientSampleId :
 SEDGWICK-COMP-3

Tgt Ion: 84 Resp: 18341

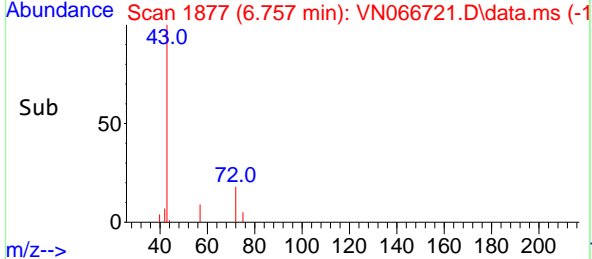
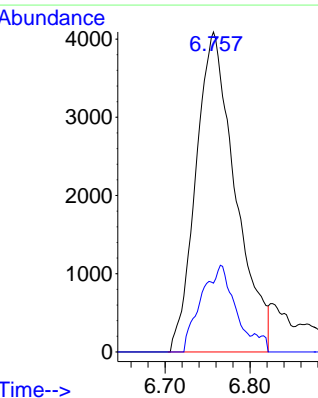
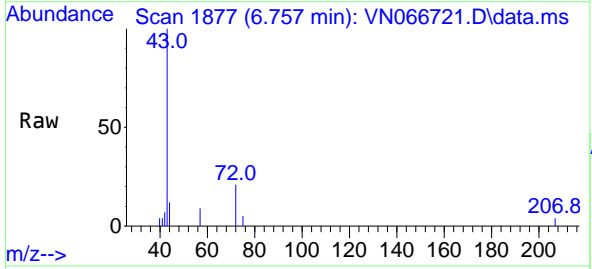
Ion	Ratio	Lower	Upper
84	100		
49	122.4	94.6	141.8
51	40.4	29.9	44.9
86	64.4	51.4	77.2

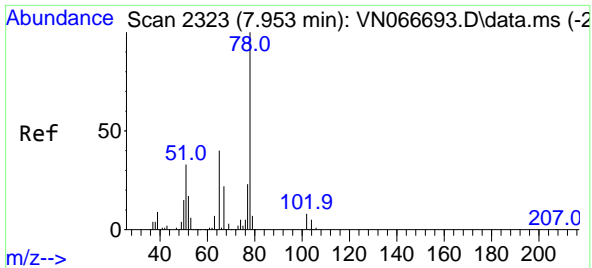


#25
 2-Butanone
 Concen: 6.34 ug/l
 RT: 6.757 min Scan# 1877
 Delta R.T. 0.011 min
 Lab File: VN066721.D
 Acq: 22 Apr 2021 17:48

Tgt Ion: 43 Resp: 13200

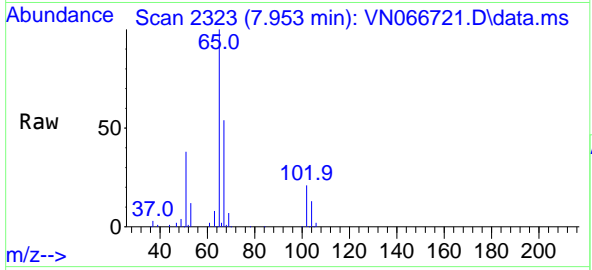
Ion	Ratio	Lower	Upper
43	100		
72	21.5	23.1	34.7#



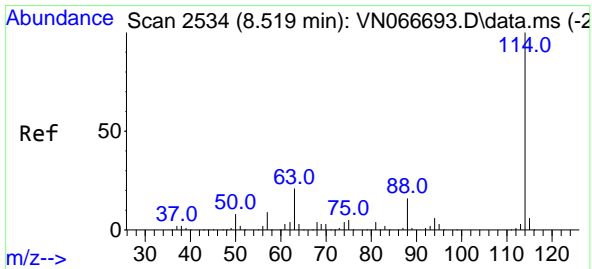
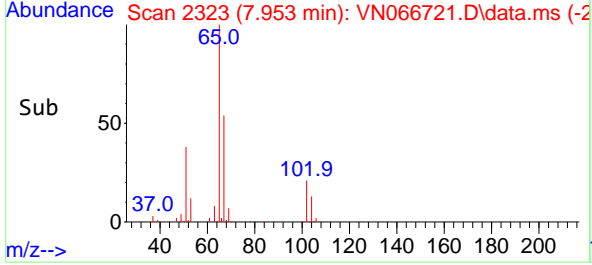
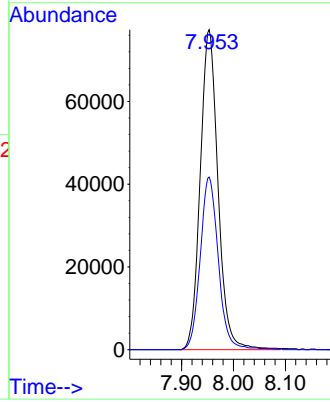


#33
 1,2-Dichloroethane-d4
 Concen: 47.49 ug/l
 RT: 7.953 min Scan# 2323
 Delta R.T. 0.000 min
 Lab File: VN066721.D
 Acq: 22 Apr 2021 17:48

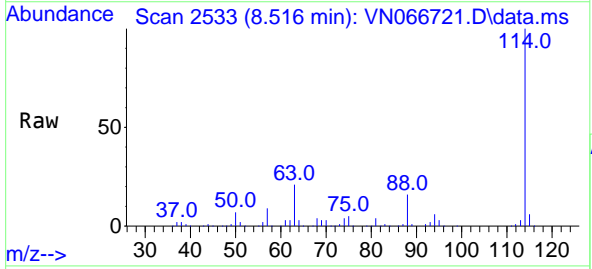
Instrument :
 MSVOA_N
ClientSampled :
 SEDGWICK-COMP-3



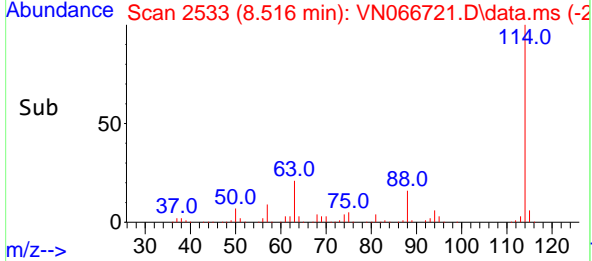
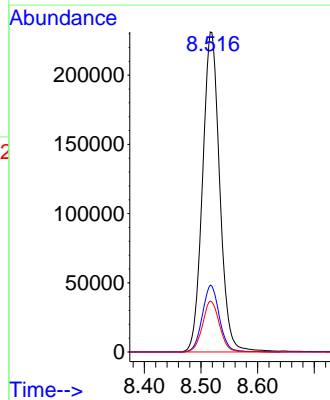
Tgt Ion: 65 Resp: 184041
 Ion Ratio Lower Upper
 65 100
 67 54.5 0.0 107.2

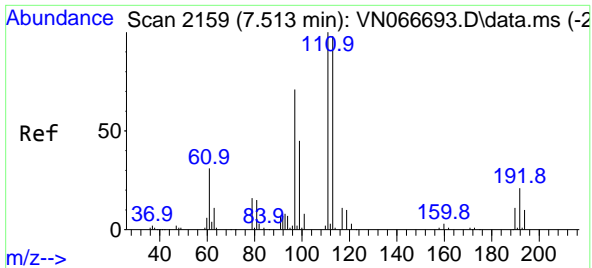


#34
 1,4-Difluorobenzene
 Concen: 50.00 ug/l
 RT: 8.516 min Scan# 2533
 Delta R.T. -0.003 min
 Lab File: VN066721.D
 Acq: 22 Apr 2021 17:48



Tgt Ion: 114 Resp: 486696
 Ion Ratio Lower Upper
 114 100
 63 20.9 0.0 38.6
 88 15.9 0.0 30.6



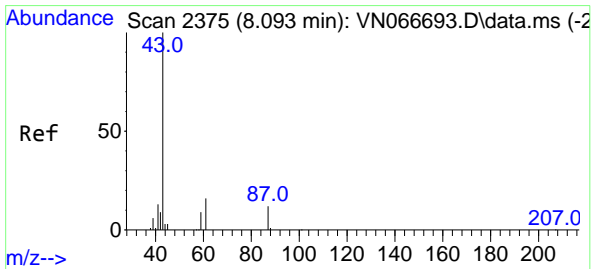
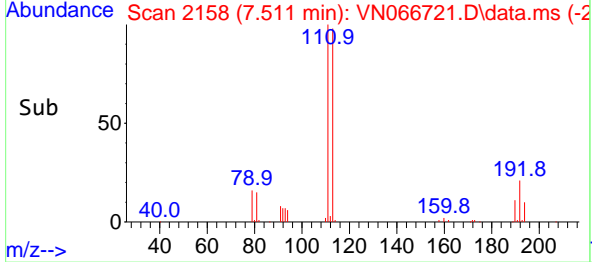
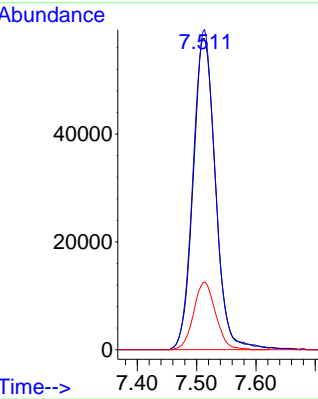
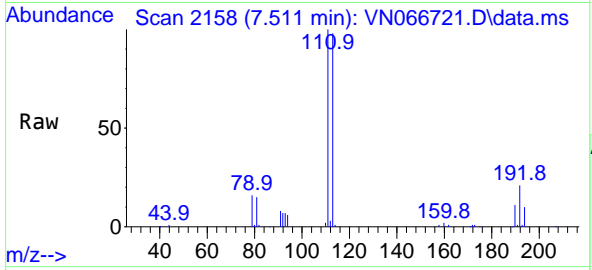


#35
 Dibromofluoromethane
 Concen: 49.65 ug/l
 RT: 7.511 min Scan# 2158
 Delta R.T. -0.002 min
 Lab File: VN066721.D
 Acq: 22 Apr 2021 17:48

Instrument :
 MSVOA_N
 ClientSampleId :
 SEDGWICK-COMP-3

Tgt Ion:113 Resp: 151325

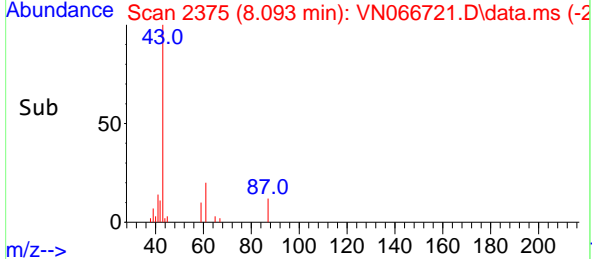
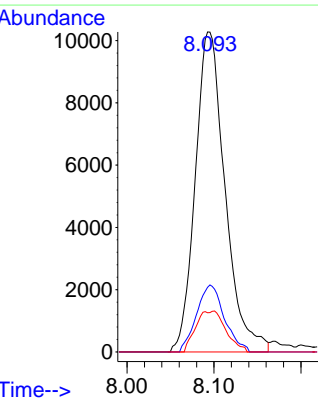
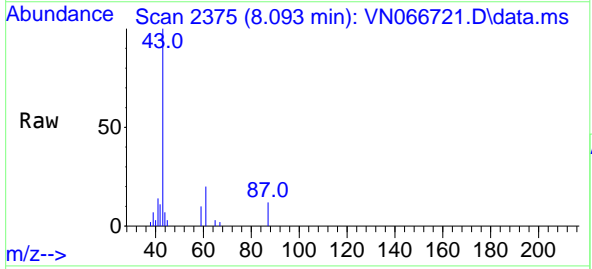
Ion	Ratio	Lower	Upper
113	100		
111	102.7	82.2	123.2
192	21.4	15.4	23.0

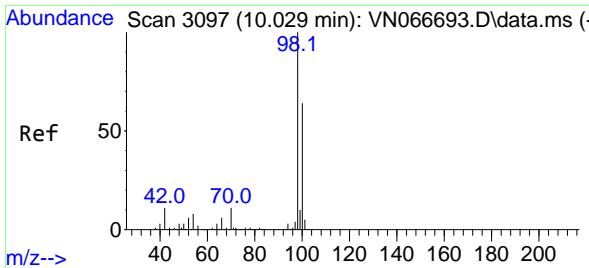


#43
 Isopropyl Acetate
 Concen: 3.22 ug/l
 RT: 8.093 min Scan# 2375
 Delta R.T. -0.000 min
 Lab File: VN066721.D
 Acq: 22 Apr 2021 17:48

Tgt Ion: 43 Resp: 24469

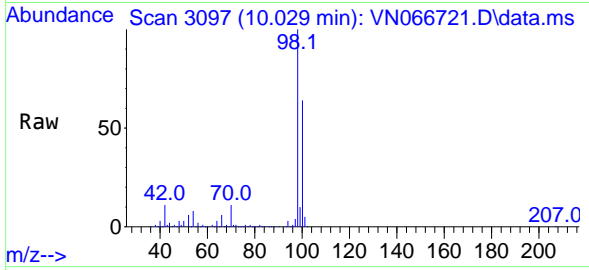
Ion	Ratio	Lower	Upper
43	100		
61	19.6	22.5	33.7#
87	5.6	11.1	16.7#



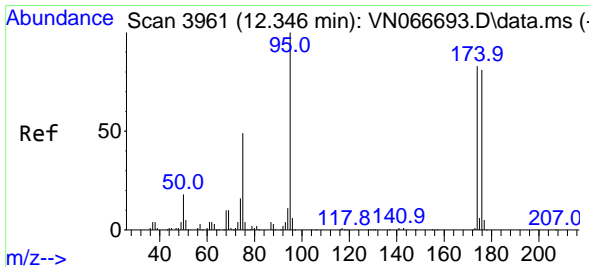
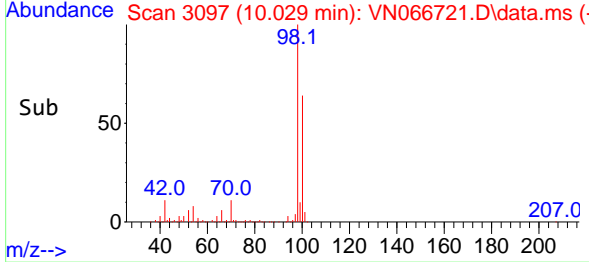
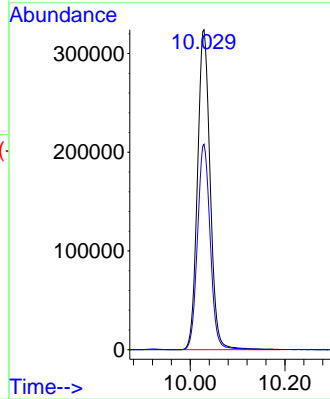


#50
 Toluene-d8
 Concen: 50.47 ug/l
 RT: 10.029 min Scan# 3097
 Delta R.T. -0.000 min
 Lab File: VN066721.D
 Acq: 22 Apr 2021 17:48

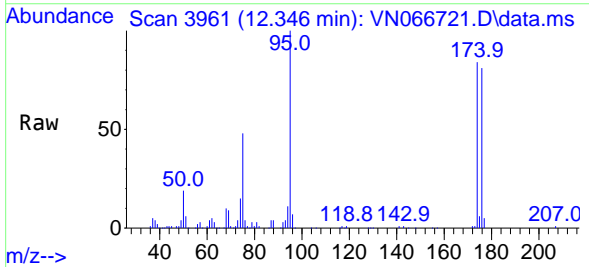
Instrument :
 MSVOA_N
 ClientSampled :
 SEDGWICK-COMP-3



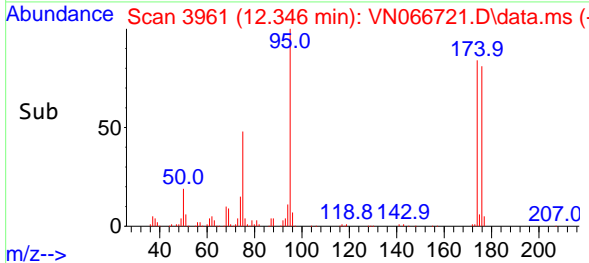
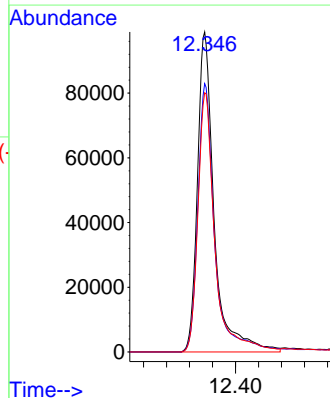
Tgt Ion: 98 Resp: 599906
 Ion Ratio Lower Upper
 98 100
 100 64.5 50.5 75.7

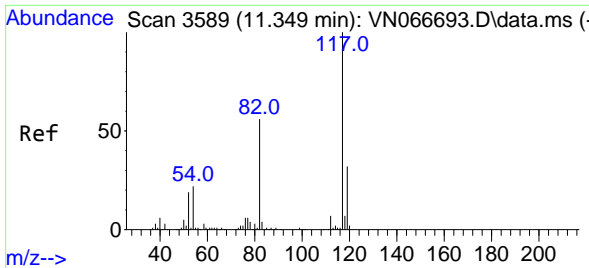


#62
 4-Bromofluorobenzene
 Concen: 49.15 ug/l
 RT: 12.346 min Scan# 3961
 Delta R.T. 0.000 min
 Lab File: VN066721.D
 Acq: 22 Apr 2021 17:48



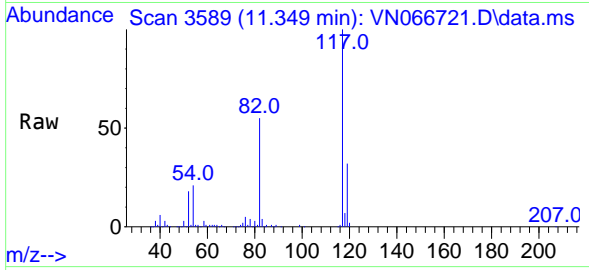
Tgt Ion: 95 Resp: 200050
 Ion Ratio Lower Upper
 95 100
 174 84.9 0.0 169.0
 176 82.2 0.0 162.4





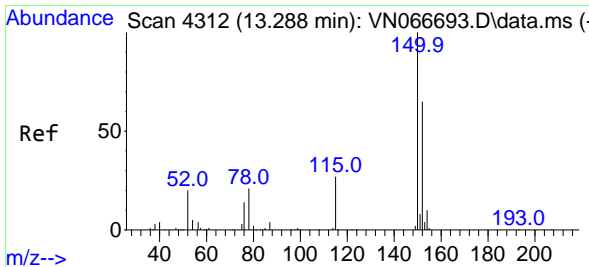
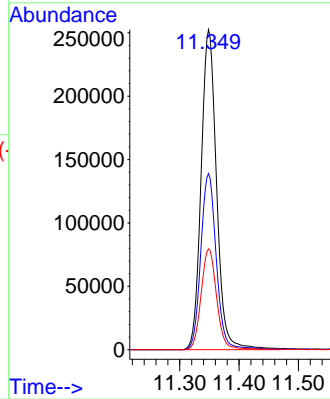
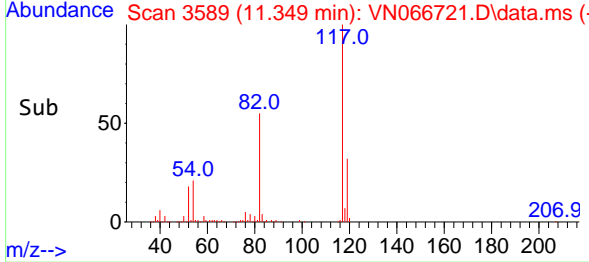
#63
 Chlorobenzene-d5
 Concen: 50.00 ug/l
 RT: 11.349 min Scan# 3589
 Delta R.T. -0.001 min
 Lab File: VN066721.D
 Acq: 22 Apr 2021 17:48

Instrument :
 MSVOA_N
 ClientSampleId :
 SEDGWICK-COMP-3

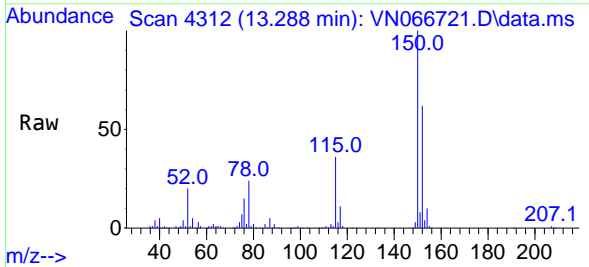


Tgt Ion:117 Resp: 456613

Ion	Ratio	Lower	Upper
117	100		
82	55.1	43.7	65.5
119	31.5	26.1	39.1



#72
 1,4-Dichlorobenzene-d4
 Concen: 50.00 ug/l
 RT: 13.288 min Scan# 4312
 Delta R.T. -0.000 min
 Lab File: VN066721.D
 Acq: 22 Apr 2021 17:48



Tgt Ion:152 Resp: 199570

Ion	Ratio	Lower	Upper
152	100		
115	56.2	28.5	85.6
150	157.0	0.0	347.6

