

Data Path : Z:\voasrv\HPCHEM1\MSVOA_N\Data\VN042821\
 Data File : VN066808.D
 Acq On : 28 Apr 2021 13:35
 Operator : JC/MD
 Sample : M2136-06 10X
 Misc : 5.00mL/MSVOA_N/WATER
 ALS Vial : 10 Sample Multiplier: 1

Instrument :
 MSVOA_N
 ClientSampled :

Quant Time: Apr 29 04:29:16 2021
 Quant Method : Z:\voasrv\HPCHEM1\MSVOA_N\methods\82N042721W.M
 Quant Title : SW846 8260
 QLast Update : Tue Apr 27 16:02:50 2021
 Response via : Initial Calibration

Compound	R.T.	QIon	Response	Conc	Units	Dev(Min)

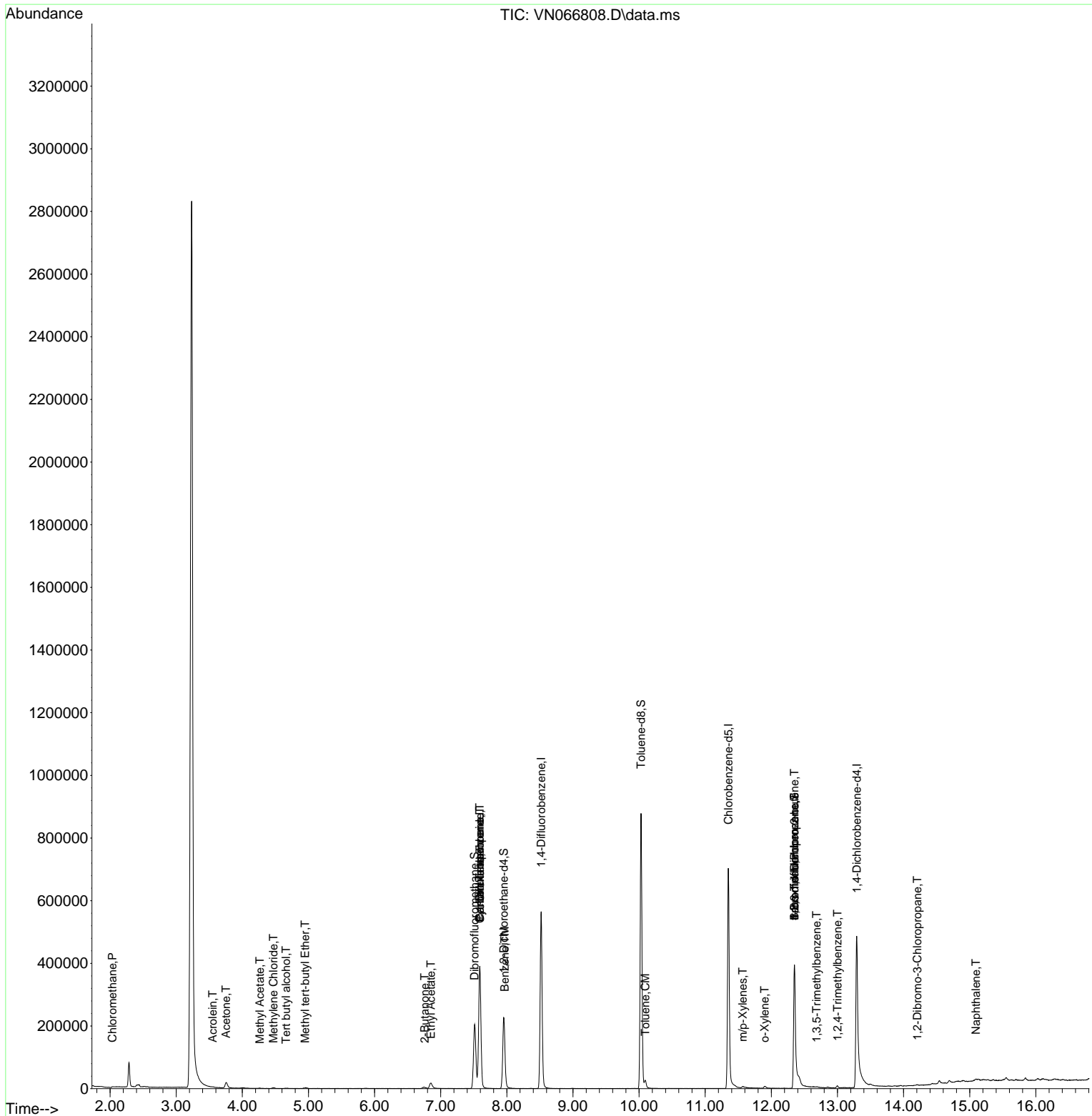
Internal Standards						
1) Pentafluorobenzene	7.591	168	351646	50.00	ug/l	0.00
34) 1,4-Difluorobenzene	8.519	114	531981	50.00	ug/l	0.00
63) Chlorobenzene-d5	11.351	117	465531	50.00	ug/l	0.00
72) 1,4-Dichlorobenzene-d4	13.293	152	197729	50.00	ug/l	0.00
System Monitoring Compounds						
33) 1,2-Dichloroethane-d4	7.953	65	189998	42.05	ug/l	0.00
Spiked Amount	50.000	Range 61 - 141	Recovery =	84.10%		
35) Dibromofluoromethane	7.513	113	163331	49.74	ug/l	0.00
Spiked Amount	50.000	Range 69 - 133	Recovery =	99.48%		
50) Toluene-d8	10.029	98	639621	49.62	ug/l	0.00
Spiked Amount	50.000	Range 65 - 126	Recovery =	99.24%		
62) 4-Bromofluorobenzene	12.349	95	177249	40.64	ug/l	0.00
Spiked Amount	50.000	Range 58 - 135	Recovery =	81.28%		
Target Compounds						
						Qvalue
3) Chloromethane	2.037	50	1305	0.26	ug/l	99
11) Tert butyl alcohol	4.662	59	516	0.74	ug/l #	73
13) Acrolein	3.552	56	837	1.44	ug/l #	79
16) Acetone	3.756	43	28112	16.49	ug/l	95
18) Methyl Acetate	4.265	43	2390	1.62	ug/l #	64
19) Methyl tert-butyl Ether	4.952	73	4638	0.38	ug/l	96
20) Methylene Chloride	4.472	84	1779	0.41	ug/l	97
25) 2-Butanone	6.760	43	3403	1.42	ug/l	90
31) Cyclohexane	7.594	56	5884	0.84	ug/l #	1
36) 1,1-Dichloropropene	7.591	75	23389	4.73	ug/l #	48
37) Ethyl Acetate	6.853	43	31880	6.07	ug/l #	88
38) Carbon Tetrachloride	7.591	117	30281	6.39	ug/l #	17
40) Benzene	7.966	78	8058	0.53	ug/l	96
52) Toluene	10.096	92	9528	1.03	ug/l	99
68) m/p-Xylenes	11.568	106	2349	0.39	ug/l	74
69) o-Xylene	11.898	106	2919	0.49	ug/l	93
71) Bromoform	12.349	173	985	0.39	ug/l #	1
76) 1,2,3-Trichloropropane	12.349	75	82236	19.73	ug/l #	100
80) 1,3,5-Trimethylbenzene	12.684	105	3351	0.27	ug/l	81
81) trans-1,4-Dichloro-2-b...	12.349	75	82236	54.41	ug/l #	12
84) 1,2,4-Trimethylbenzene	13.001	105	5468	0.47	ug/l	92
92) 1,2-Dibromo-3-Chloropr...	14.210	75	266	0.31	ug/l #	1
95) Naphthalene	15.092	128	10055	1.15	ug/l #	87

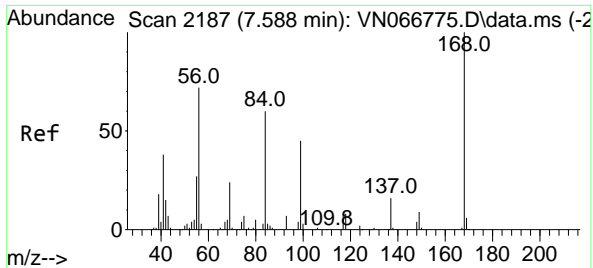
(#) = qualifier out of range (m) = manual integration (+) = signals summed

Data Path : Z:\voasrv\HPCHEM1\MSVOA_N\Data\VN042821\
 Data File : VN066808.D
 Acq On : 28 Apr 2021 13:35
 Operator : JC/MD
 Sample : M2136-06 10X
 Misc : 5.00mL/MSVOA_N/WATER
 ALS Vial : 10 Sample Multiplier: 1

Instrument :
 MSVOA_N
 Client Sampled :

Quant Time: Apr 29 04:29:16 2021
 Quant Method : Z:\voasrv\HPCHEM1\MSVOA_N\methods\82N042721W.M
 Quant Title : SW846 8260
 QLast Update : Tue Apr 27 16:02:50 2021
 Response via : Initial Calibration

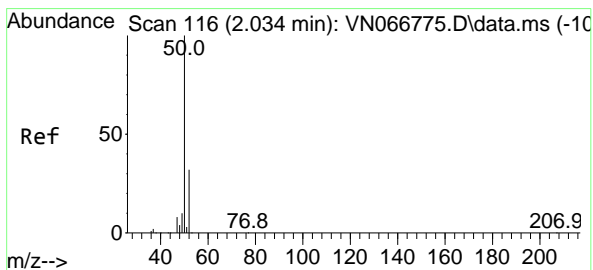
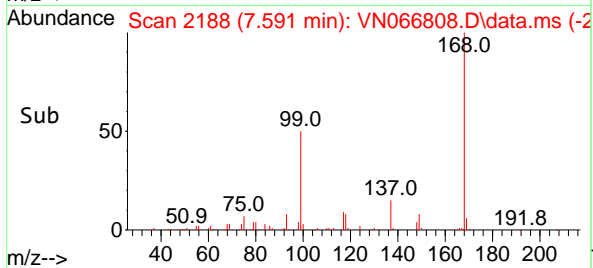
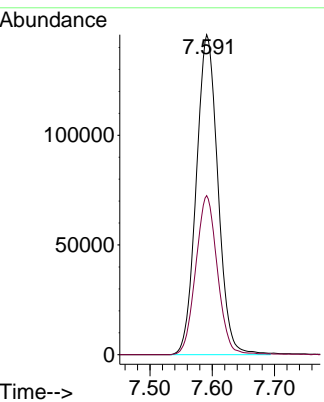
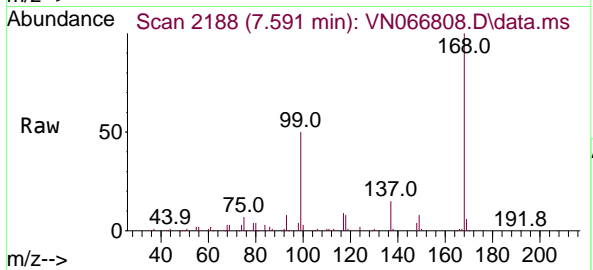




#1
 Pentafluorobenzene
 Concen: 50.00 ug/l
 RT: 7.591 min Scan# 2188
 Delta R.T. 0.003 min
 Lab File: VN066808.D
 Acq: 28 Apr 2021 13:35

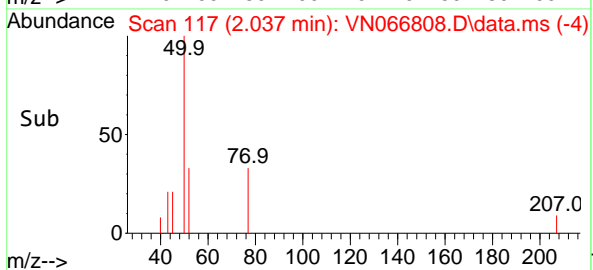
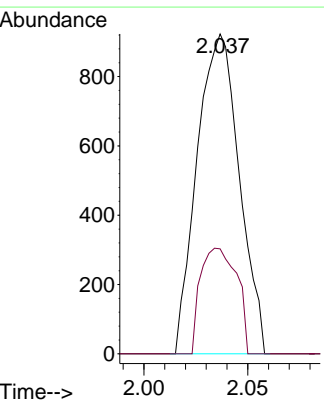
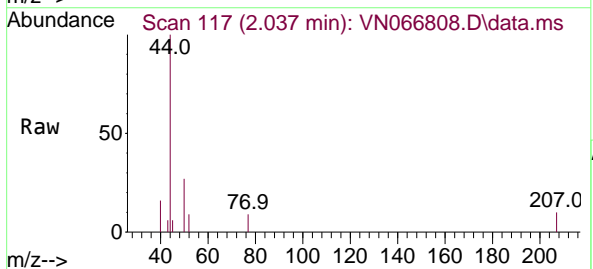
Instrument :
 MSVOA_N
 ClientSampled :

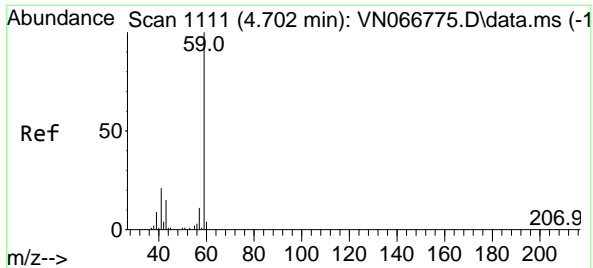
Tgt Ion:168 Resp: 351646
 Ion Ratio Lower Upper
 168 100
 99 49.7 42.6 63.8



#3
 Chloromethane
 Concen: 0.26 ug/l
 RT: 2.037 min Scan# 117
 Delta R.T. 0.003 min
 Lab File: VN066808.D
 Acq: 28 Apr 2021 13:35

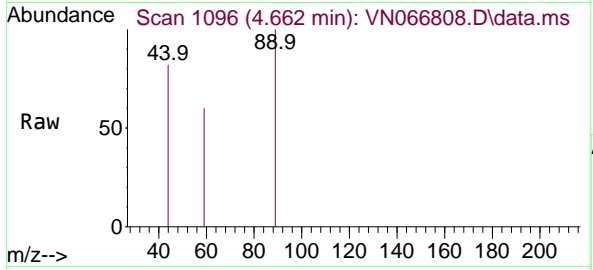
Tgt Ion: 50 Resp: 1305
 Ion Ratio Lower Upper
 50 100
 52 32.8 25.8 38.8



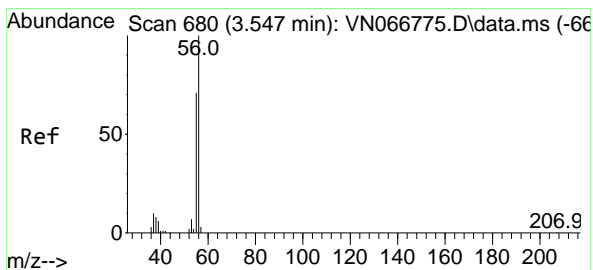
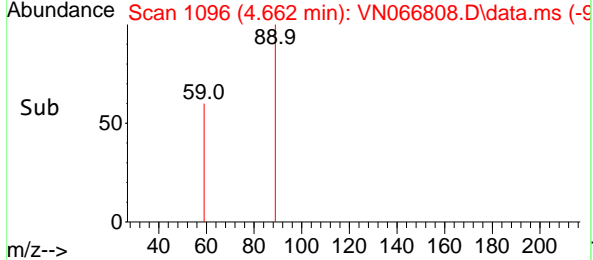
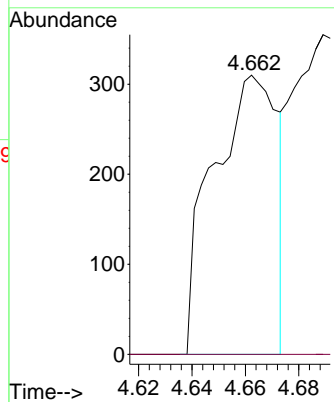


#11
 Tert butyl alcohol
 Concen: 0.74 ug/l
 RT: 4.662 min Scan# 1096
 Delta R.T. -0.040 min
 Lab File: VN066808.D
 Acq: 28 Apr 2021 13:35

Instrument :
 MSVOA_N
 ClientSampled :

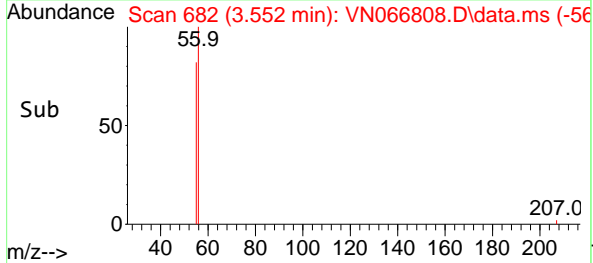
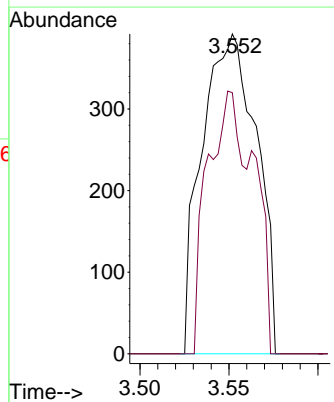
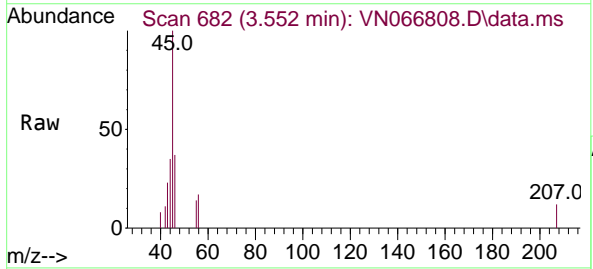


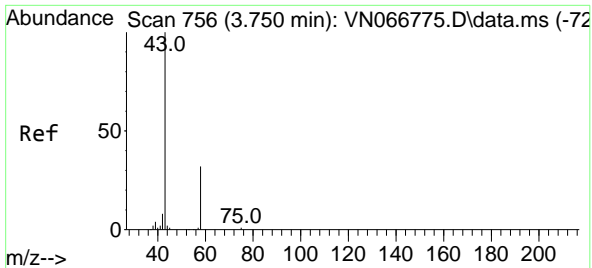
Tgt Ion: 59 Resp: 516
 Ion Ratio Lower Upper
 59 100
 57 0.0 8.0 12.0#



#13
 Acrolein
 Concen: 1.44 ug/l
 RT: 3.552 min Scan# 682
 Delta R.T. 0.005 min
 Lab File: VN066808.D
 Acq: 28 Apr 2021 13:35

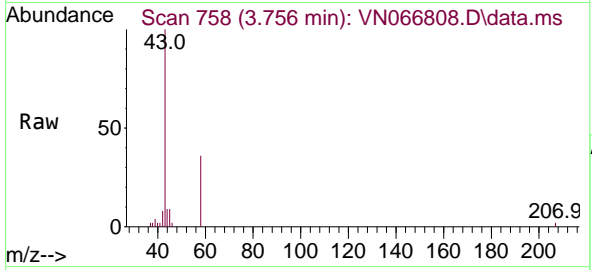
Tgt Ion: 56 Resp: 837
 Ion Ratio Lower Upper
 56 100
 55 53.2 56.0 84.0#



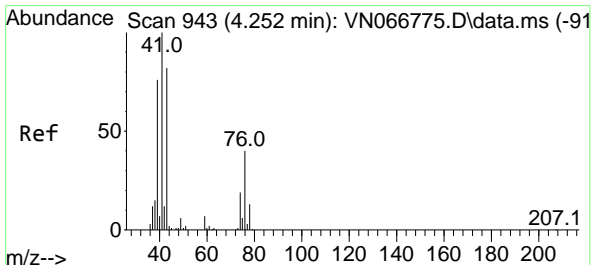
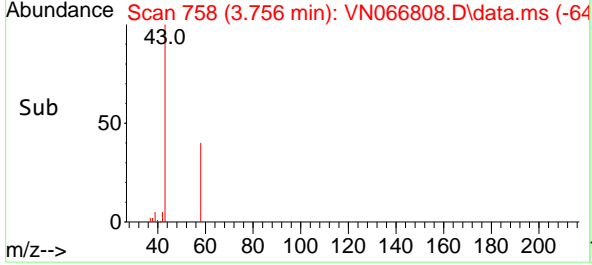
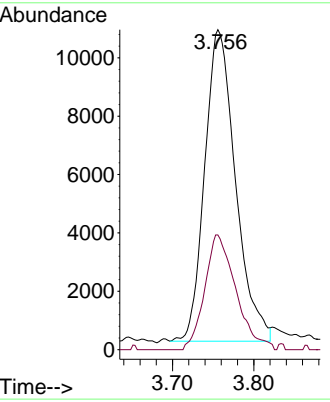


#16
 Acetone
 Concen: 16.49 ug/l
 RT: 3.756 min Scan# 758
 Delta R.T. 0.006 min
 Lab File: VN066808.D
 Acq: 28 Apr 2021 13:35

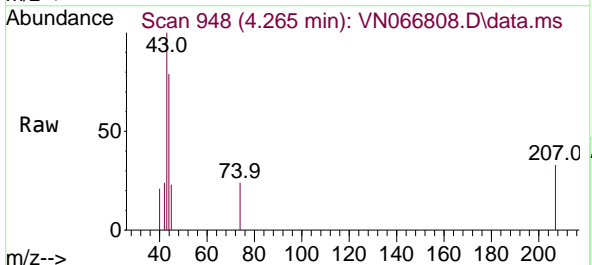
Instrument :
 MSVOA_N
 ClientSampled :



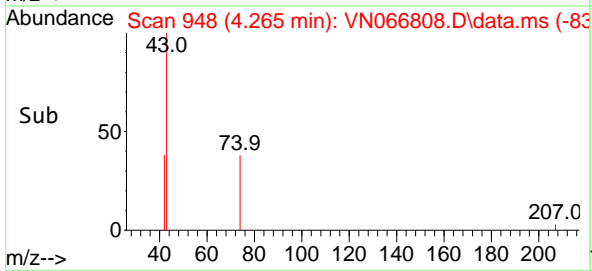
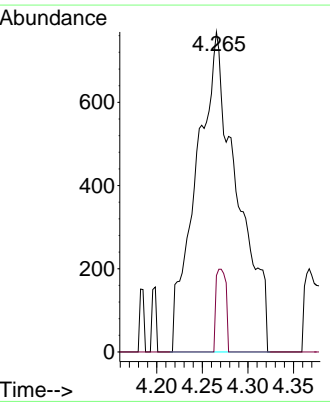
Tgt Ion: 43 Resp: 28112
 Ion Ratio Lower Upper
 43 100
 58 36.8 27.0 40.6

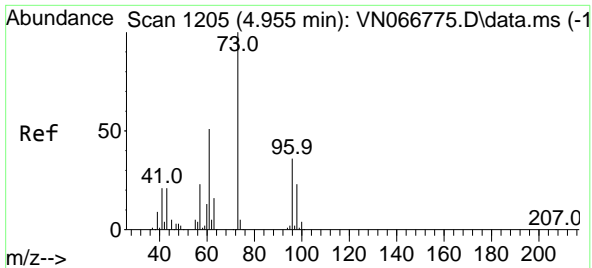


#18
 Methyl Acetate
 Concen: 1.62 ug/l
 RT: 4.265 min Scan# 948
 Delta R.T. 0.013 min
 Lab File: VN066808.D
 Acq: 28 Apr 2021 13:35



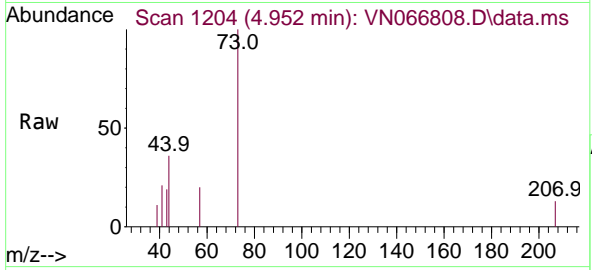
Tgt Ion: 43 Resp: 2390
 Ion Ratio Lower Upper
 43 100
 74 6.3 19.5 29.3#



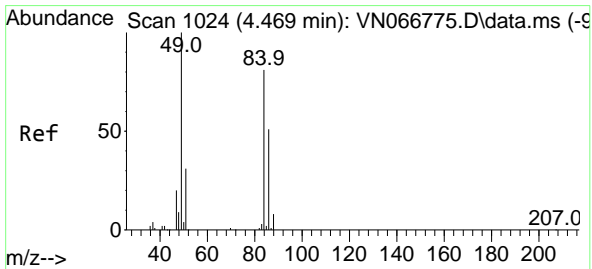
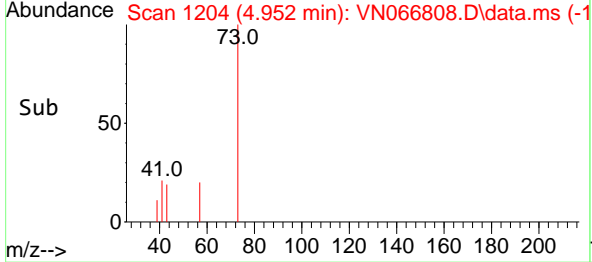
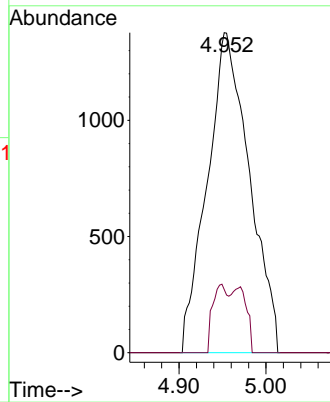


#19
 Methyl tert-butyl Ether
 Concen: 0.38 ug/l
 RT: 4.952 min Scan# 1204
 Delta R.T. -0.003 min
 Lab File: VN066808.D
 Acq: 28 Apr 2021 13:35

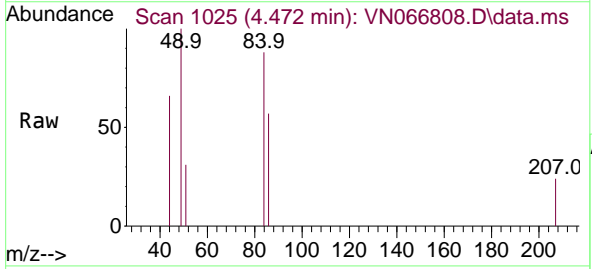
Instrument :
 MSVOA_N
 ClientSampled :



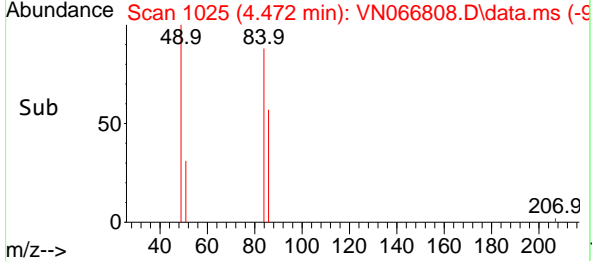
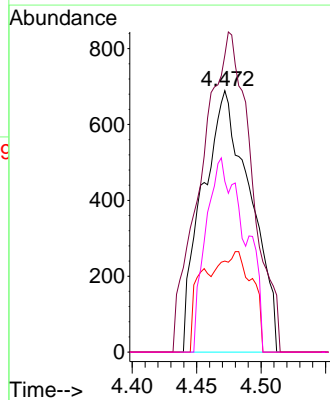
Tgt Ion: 73 Resp: 4638
 Ion Ratio Lower Upper
 73 100
 57 19.8 17.3 25.9

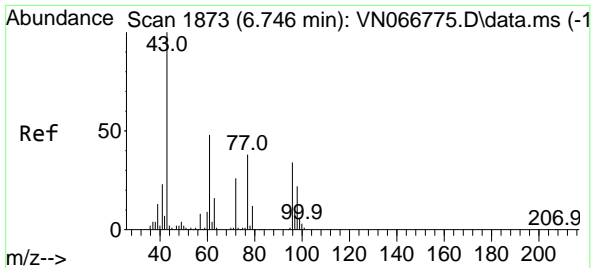


#20
 Methylene Chloride
 Concen: 0.41 ug/l
 RT: 4.472 min Scan# 1025
 Delta R.T. 0.003 min
 Lab File: VN066808.D
 Acq: 28 Apr 2021 13:35



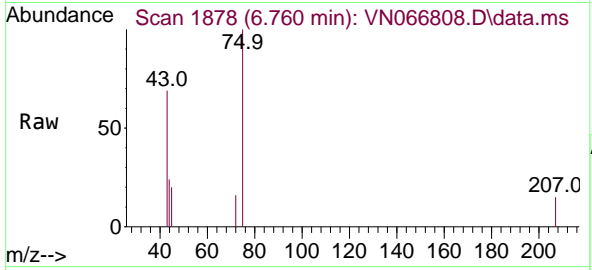
Tgt Ion: 84 Resp: 1779
 Ion Ratio Lower Upper
 84 100
 49 113.6 94.6 141.8
 51 34.8 29.9 44.9
 86 65.3 51.4 77.2



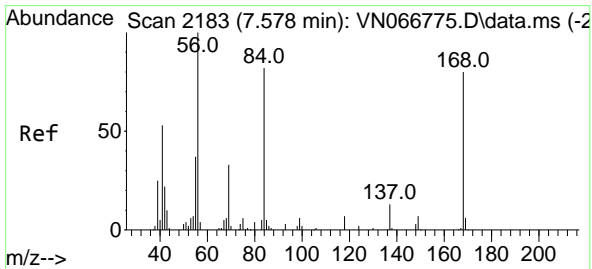
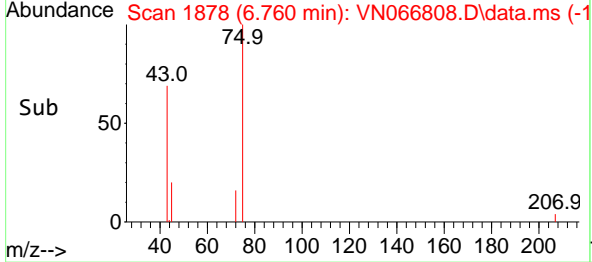
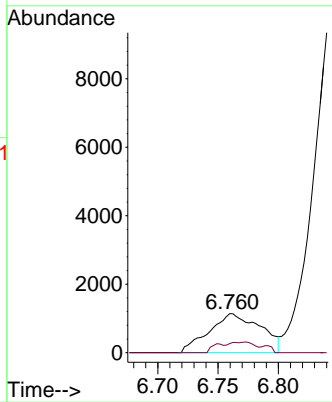


#25
 2-Butanone
 Concen: 1.42 ug/l
 RT: 6.760 min Scan# 1878
 Delta R.T. 0.014 min
 Lab File: VN066808.D
 Acq: 28 Apr 2021 13:35

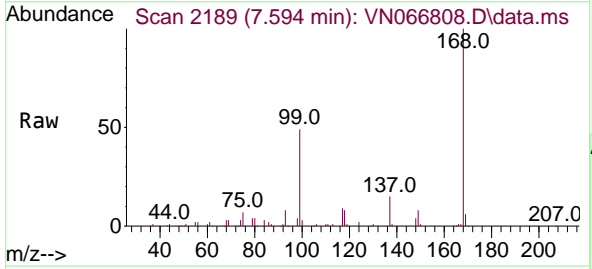
Instrument :
 MSVOA_N
 ClientSampled :



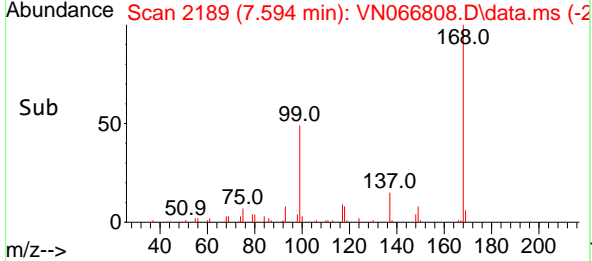
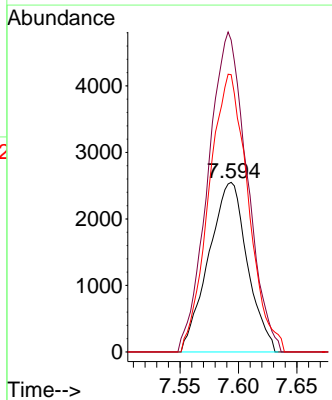
Tgt Ion: 43 Resp: 3403
 Ion Ratio Lower Upper
 43 100
 72 23.4 23.1 34.7

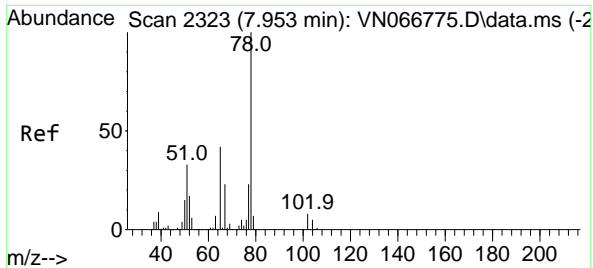


#31
 Cyclohexane
 Concen: 0.84 ug/l
 RT: 7.594 min Scan# 2189
 Delta R.T. 0.016 min
 Lab File: VN066808.D
 Acq: 28 Apr 2021 13:35



Tgt Ion: 56 Resp: 5884
 Ion Ratio Lower Upper
 56 100
 69 183.9 26.6 39.8#
 84 163.5 70.4 105.6#

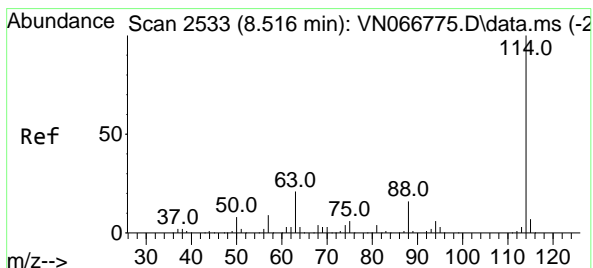
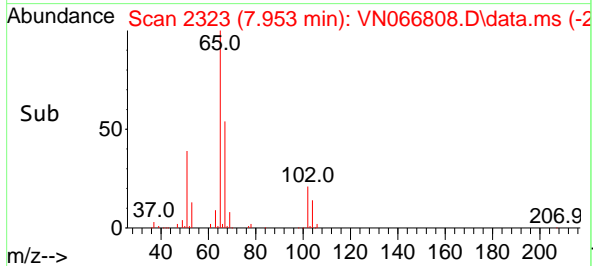
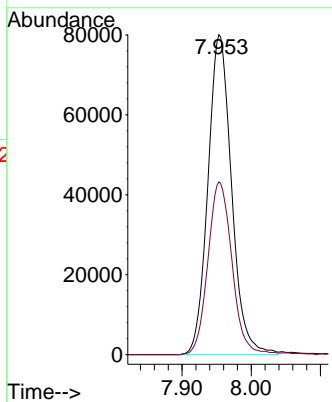
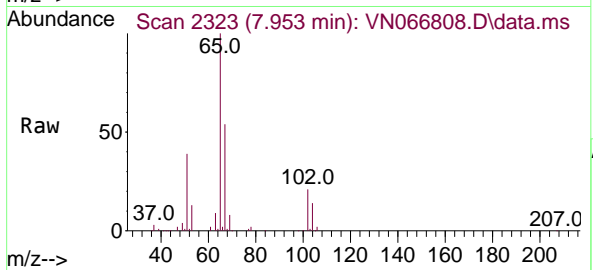




#33
 1,2-Dichloroethane-d4
 Concen: 42.05 ug/l
 RT: 7.953 min Scan# 2323
 Delta R.T. 0.000 min
 Lab File: VN066808.D
 Acq: 28 Apr 2021 13:35

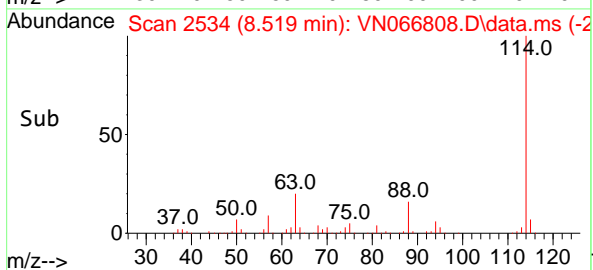
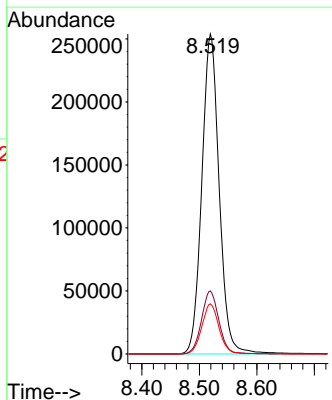
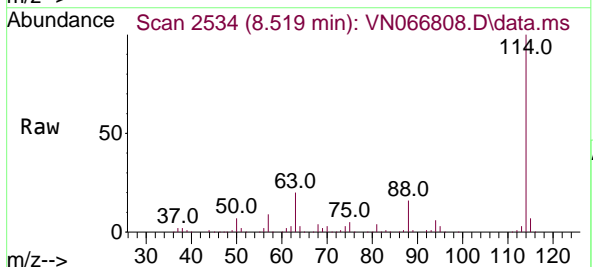
Instrument :
 MSVOA_N
 ClientSampled :

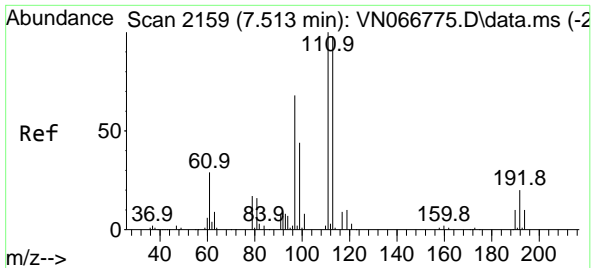
Tgt Ion: 65 Resp: 189998
 Ion Ratio Lower Upper
 65 100
 67 55.0 0.0 107.2



#34
 1,4-Difluorobenzene
 Concen: 50.00 ug/l
 RT: 8.519 min Scan# 2534
 Delta R.T. 0.003 min
 Lab File: VN066808.D
 Acq: 28 Apr 2021 13:35

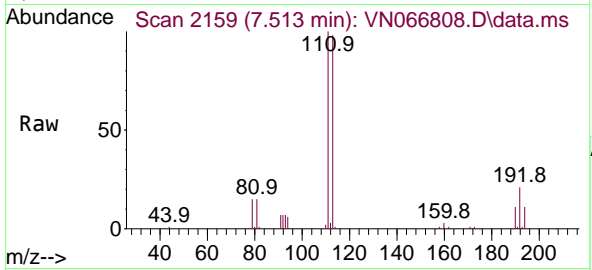
Tgt Ion:114 Resp: 531981
 Ion Ratio Lower Upper
 114 100
 63 19.7 0.0 38.6
 88 15.6 0.0 30.6



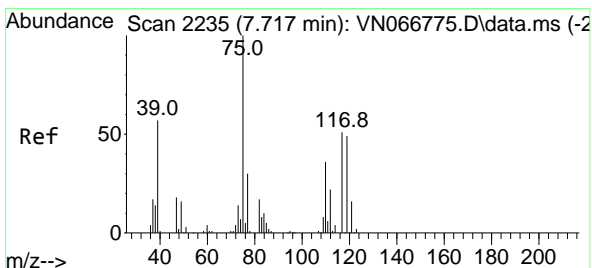
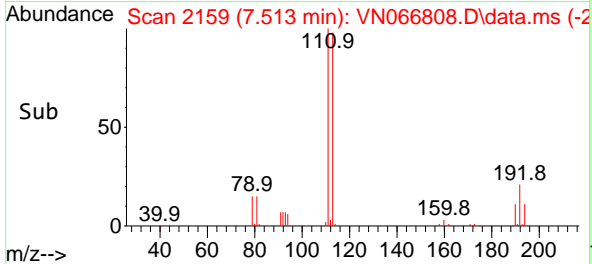
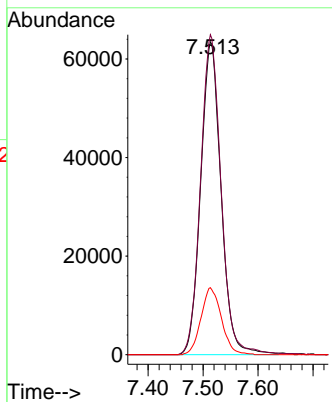


#35
 Dibromofluoromethane
 Concen: 49.74 ug/l
 RT: 7.513 min Scan# 2159
 Delta R.T. 0.000 min
 Lab File: VN066808.D
 Acq: 28 Apr 2021 13:35

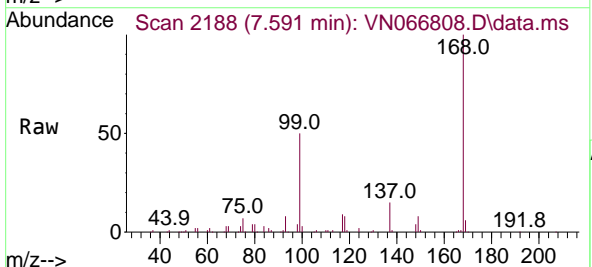
Instrument :
 MSVOA_N
 ClientSampled :



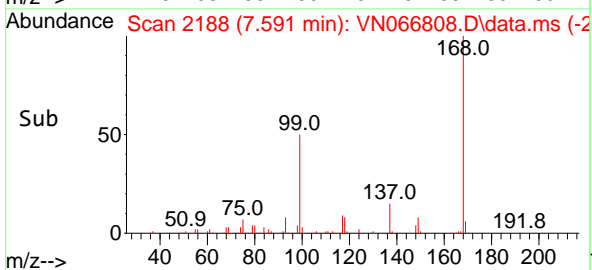
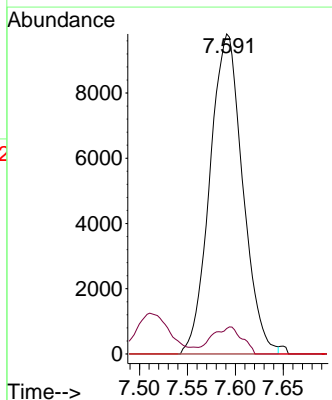
Tgt Ion:113 Resp: 163331
 Ion Ratio Lower Upper
 113 100
 111 103.1 82.2 123.2
 192 21.5 15.4 23.0

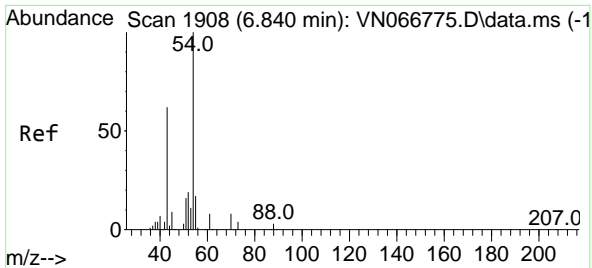


#36
 1,1-Dichloropropene
 Concen: 4.73 ug/l
 RT: 7.591 min Scan# 2188
 Delta R.T. -0.126 min
 Lab File: VN066808.D
 Acq: 28 Apr 2021 13:35



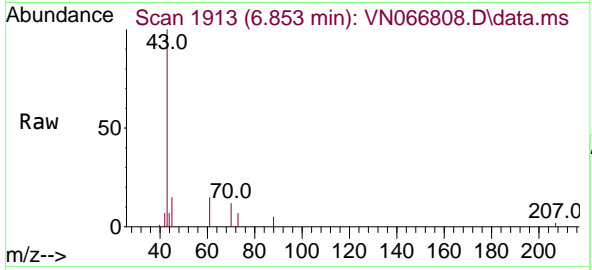
Tgt Ion: 75 Resp: 23389
 Ion Ratio Lower Upper
 75 100
 110 7.7 18.2 54.6#
 77 0.0 24.9 37.3#



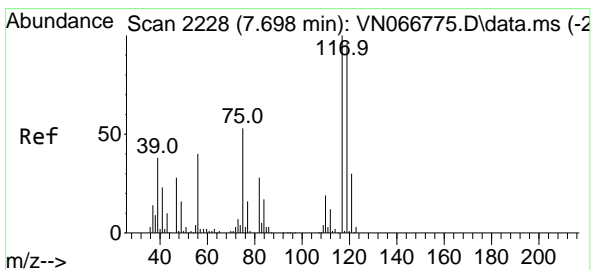
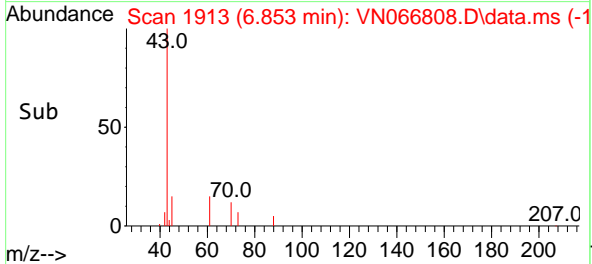
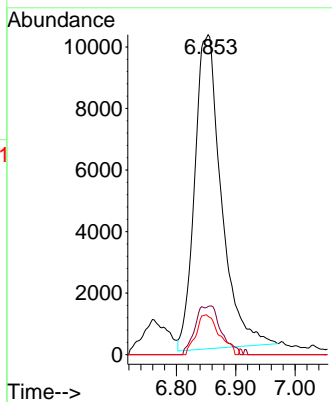


#37
 Ethyl Acetate
 Concen: 6.07 ug/l
 RT: 6.853 min Scan# 1913
 Delta R.T. 0.013 min
 Lab File: VN066808.D
 Acq: 28 Apr 2021 13:35

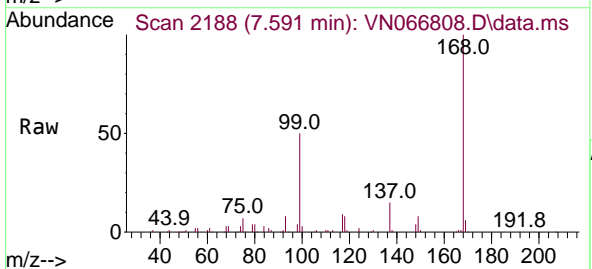
Instrument :
 MSVOA_N
 ClientSampled :



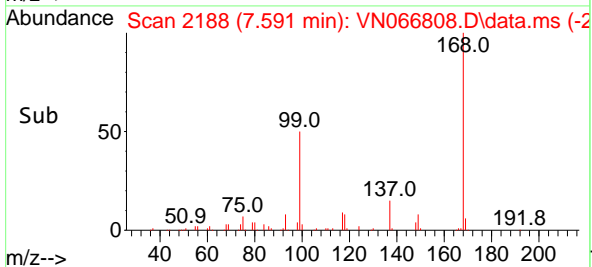
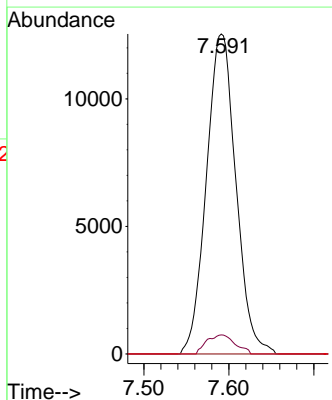
Tgt Ion:	43	61	70	Resp:	31880	Lower	Upper
Ion Ratio	100	6.3	11.0				
		11.6	8.6				
						17.4#	13.0

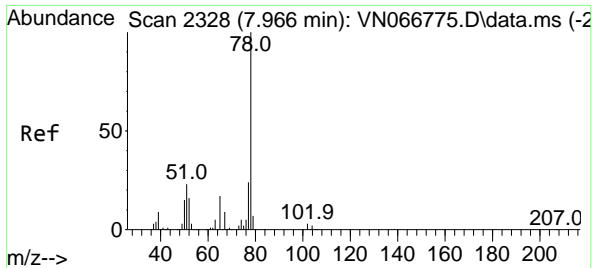


#38
 Carbon Tetrachloride
 Concen: 6.39 ug/l
 RT: 7.591 min Scan# 2188
 Delta R.T. -0.107 min
 Lab File: VN066808.D
 Acq: 28 Apr 2021 13:35



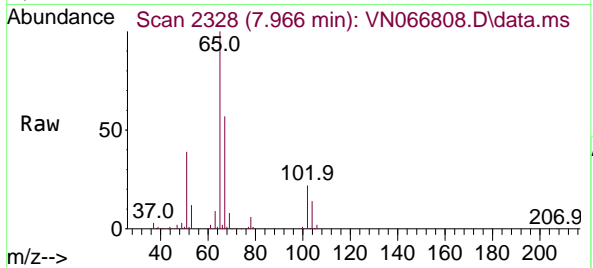
Tgt Ion:	117	119	121	Resp:	30281	Lower	Upper
Ion Ratio	100	5.9	0.0				
		76.0	24.5				
						114.0#	36.7#



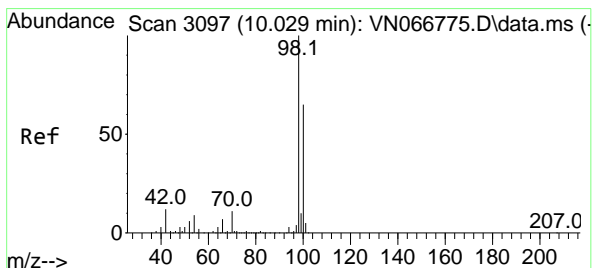
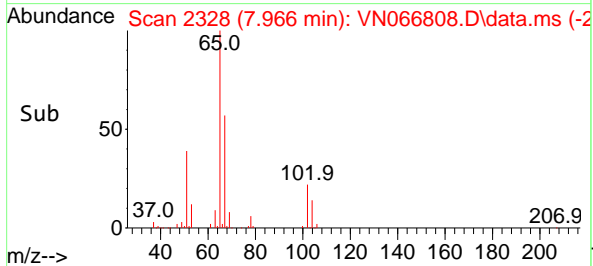
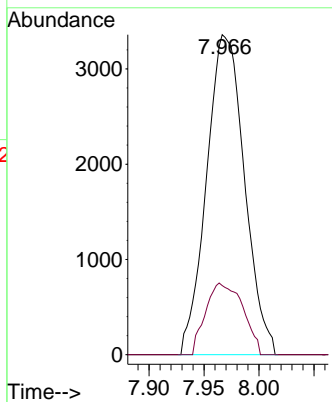


#40
Benzene
Concen: 0.53 ug/l
RT: 7.966 min Scan# 2328
Delta R.T. 0.000 min
Lab File: VN066808.D
Acq: 28 Apr 2021 13:35

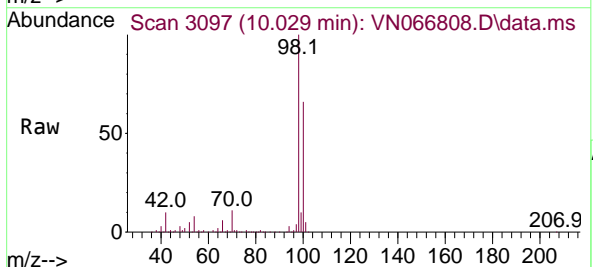
Instrument :
MSVOA_N
ClientSampled :



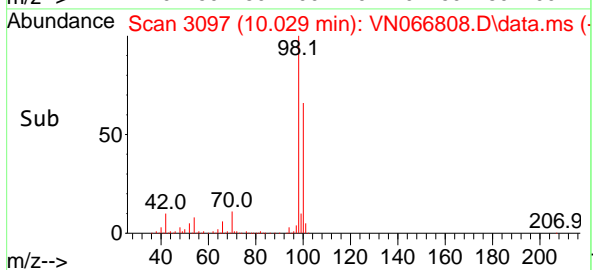
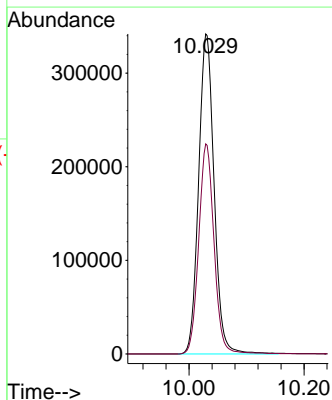
Tgt Ion: 78 Resp: 8058
Ion Ratio Lower Upper
78 100
77 21.6 19.0 28.4

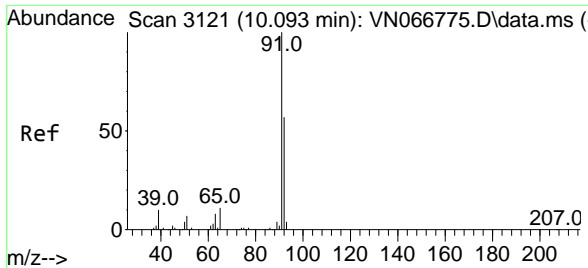


#50
Toluene-d8
Concen: 49.62 ug/l
RT: 10.029 min Scan# 3097
Delta R.T. -0.000 min
Lab File: VN066808.D
Acq: 28 Apr 2021 13:35



Tgt Ion: 98 Resp: 639621
Ion Ratio Lower Upper
98 100
100 64.7 50.5 75.7

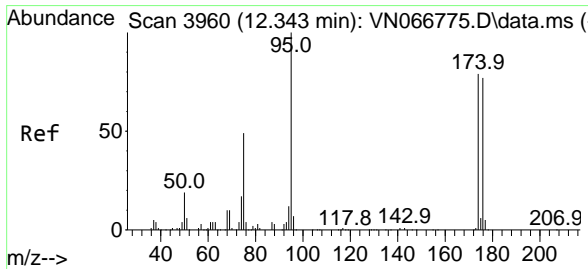
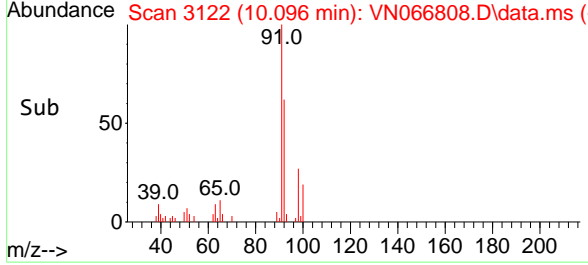
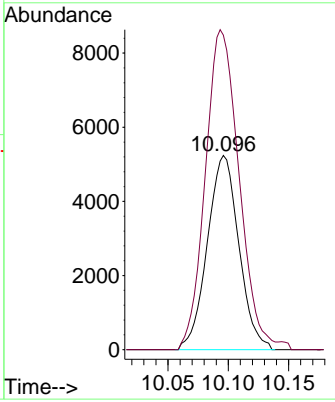
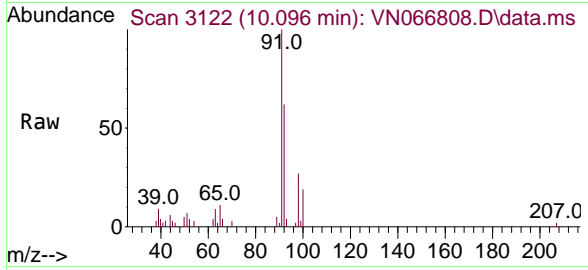




#52
 Toluene
 Concen: 1.03 ug/l
 RT: 10.096 min Scan# 3122
 Delta R.T. 0.003 min
 Lab File: VN066808.D
 Acq: 28 Apr 2021 13:35

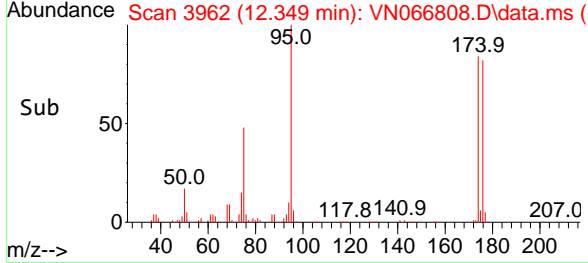
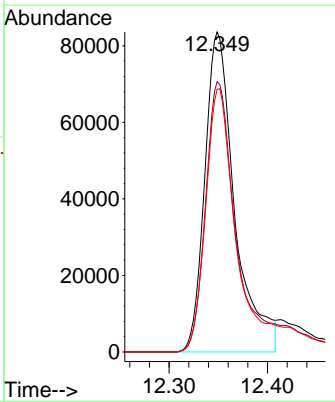
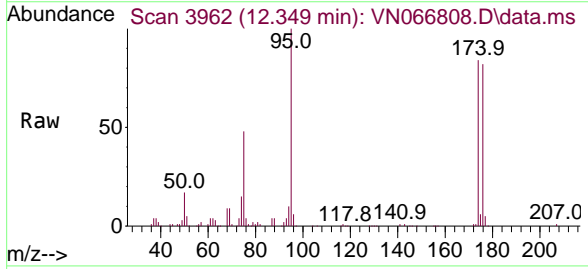
Instrument :
 MSVOA_N
 ClientSampled :

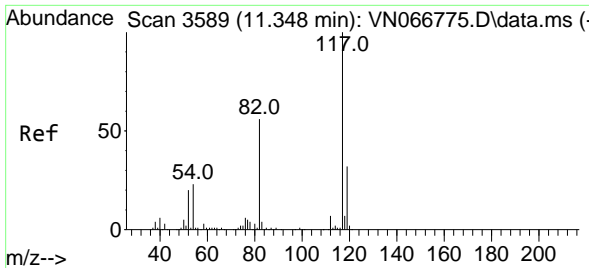
Tgt Ion: 92 Resp: 9528
 Ion Ratio Lower Upper
 92 100
 91 177.1 140.7 211.1



#62
 4-Bromofluorobenzene
 Concen: 40.64 ug/l
 RT: 12.349 min Scan# 3962
 Delta R.T. 0.006 min
 Lab File: VN066808.D
 Acq: 28 Apr 2021 13:35

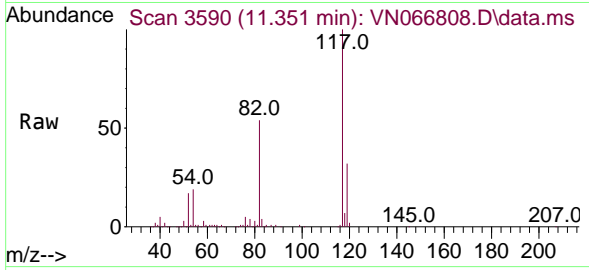
Tgt Ion: 95 Resp: 177249
 Ion Ratio Lower Upper
 95 100
 174 94.4 0.0 169.0
 176 91.5 0.0 162.4





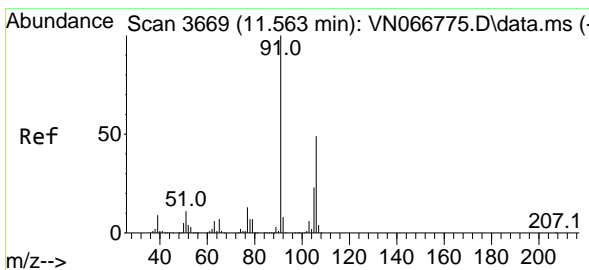
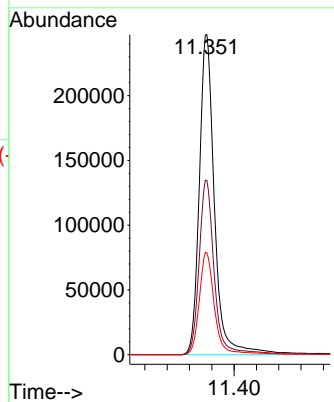
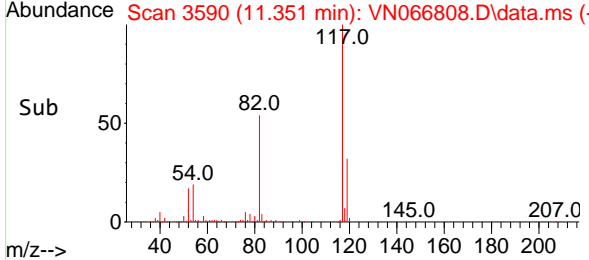
#63
 Chlorobenzene-d5
 Concen: 50.00 ug/l
 RT: 11.351 min Scan# 3590
 Delta R.T. 0.003 min
 Lab File: VN066808.D
 Acq: 28 Apr 2021 13:35

Instrument :
 MSVOA_N
 ClientSampled :

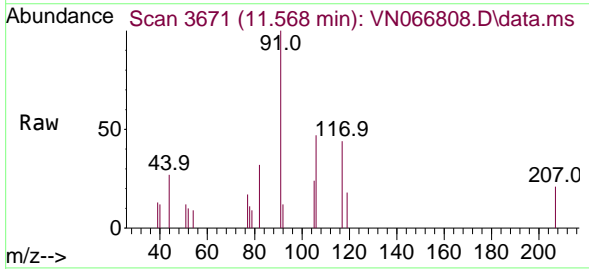


Tgt Ion:117 Resp: 465531

Ion	Ratio	Lower	Upper
117	100		
82	54.4	43.7	65.5
119	31.9	26.1	39.1

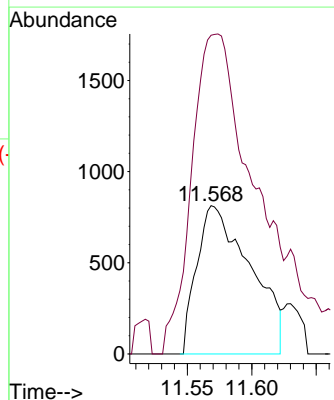
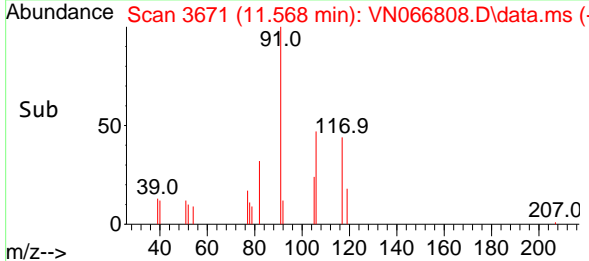


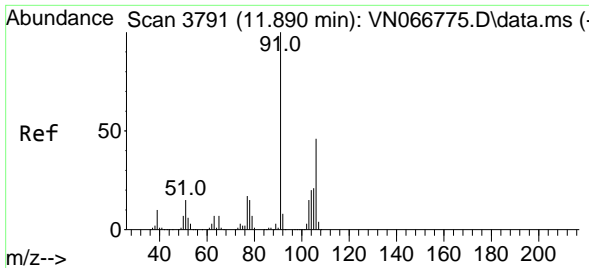
#68
 m/p-Xylenes
 Concen: 0.39 ug/l
 RT: 11.568 min Scan# 3671
 Delta R.T. 0.005 min
 Lab File: VN066808.D
 Acq: 28 Apr 2021 13:35



Tgt Ion:106 Resp: 2349

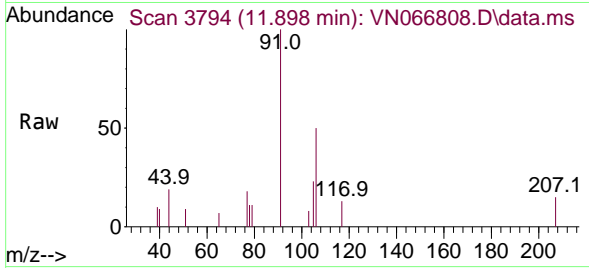
Ion	Ratio	Lower	Upper
106	100		
91	241.5	161.4	242.0



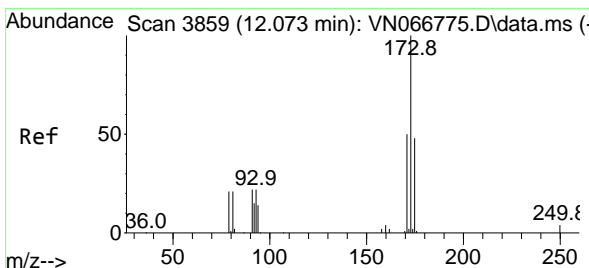
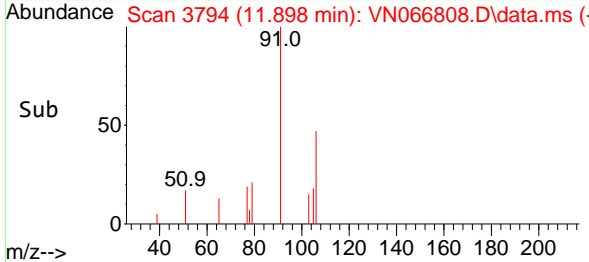
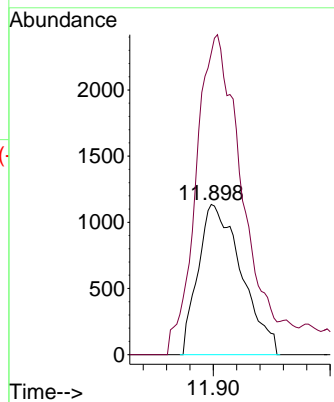


#69
 o-Xylene
 Concen: 0.49 ug/l
 RT: 11.898 min Scan# 3794
 Delta R.T. 0.008 min
 Lab File: VN066808.D
 Acq: 28 Apr 2021 13:35

Instrument :
 MSVOA_N
 ClientSampled :

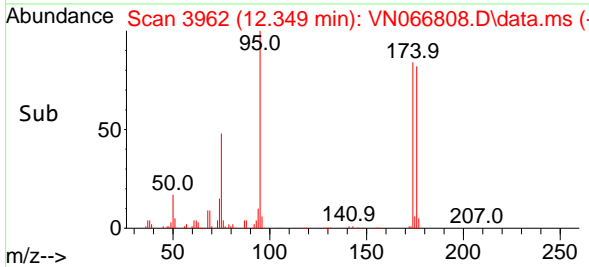
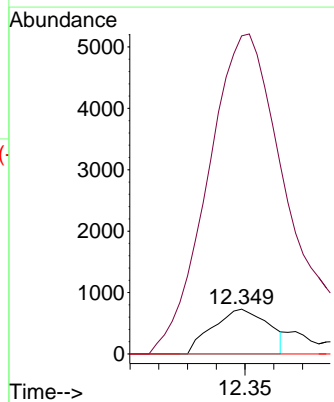
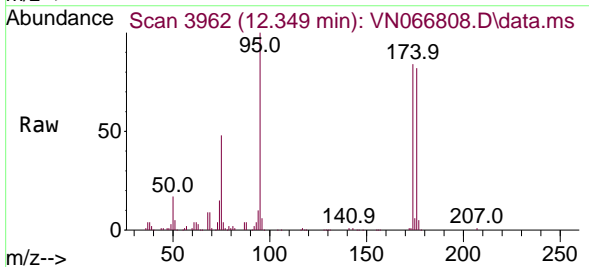


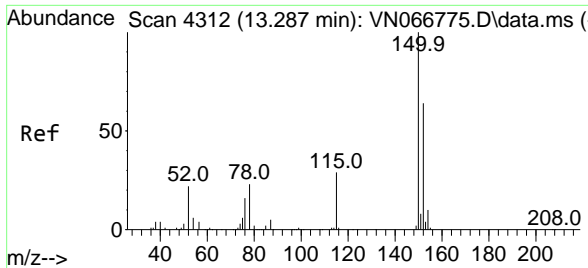
Tgt Ion:106 Resp: 2919
 Ion Ratio Lower Upper
 106 100
 91 225.1 106.8 320.4



#71
 Bromoform
 Concen: 0.39 ug/l
 RT: 12.349 min Scan# 3962
 Delta R.T. 0.276 min
 Lab File: VN066808.D
 Acq: 28 Apr 2021 13:35

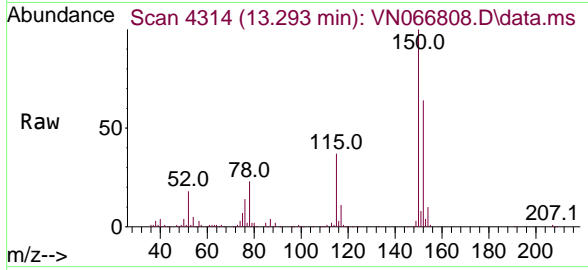
Tgt Ion:173 Resp: 985
 Ion Ratio Lower Upper
 173 100
 175 823.4 23.8 71.2#
 254 0.0 0.0 0.0





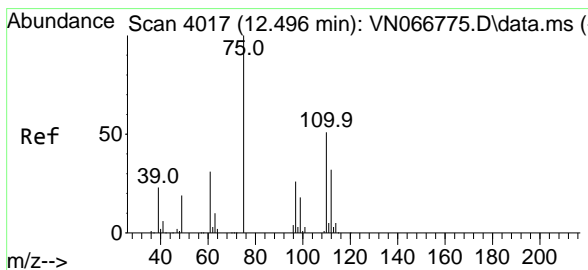
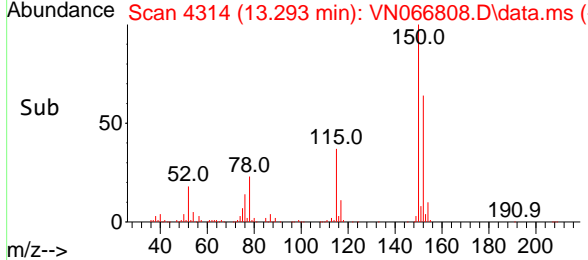
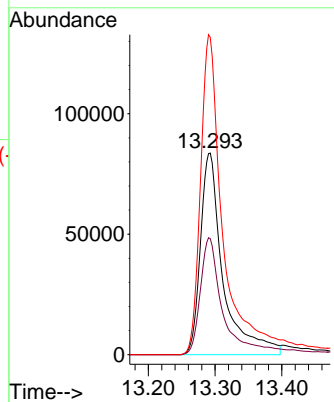
#72
 1,4-Dichlorobenzene-d4
 Concen: 50.00 ug/l
 RT: 13.293 min Scan# 4314
 Delta R.T. 0.005 min
 Lab File: VN066808.D
 Acq: 28 Apr 2021 13:35

Instrument :
 MSVOA_N
 ClientSampled :



Tgt Ion:152 Resp: 197729

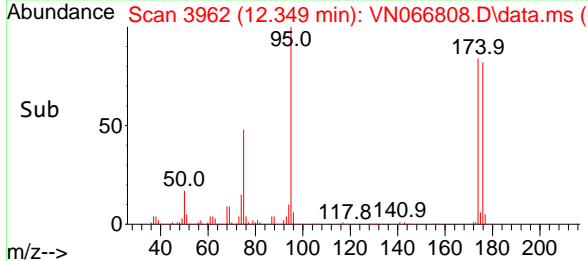
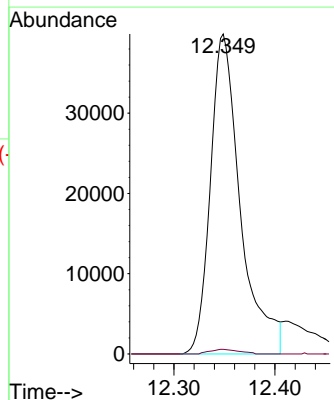
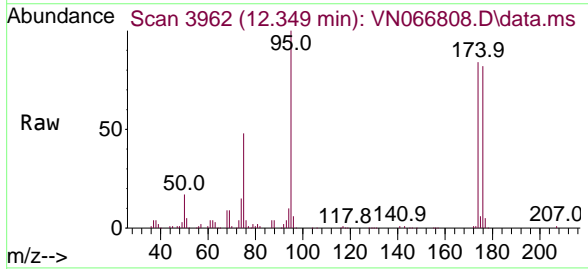
Ion	Ratio	Lower	Upper
152	100		
115	58.3	28.5	85.6
150	160.3	0.0	347.6

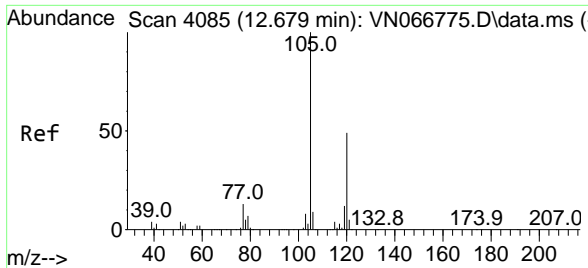


#76
 1,2,3-Trichloropropane
 Concen: 19.73 ug/l
 RT: 12.349 min Scan# 3962
 Delta R.T. -0.147 min
 Lab File: VN066808.D
 Acq: 28 Apr 2021 13:35

Tgt Ion: 75 Resp: 82236

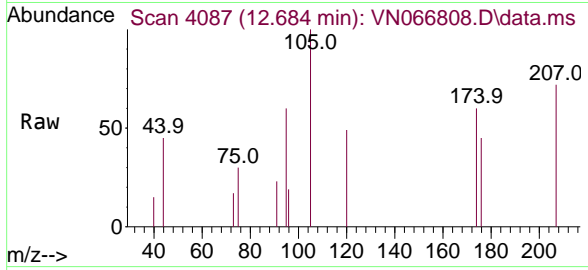
Ion	Ratio	Lower	Upper
75	100		
77	1.4	0.0	0.0#



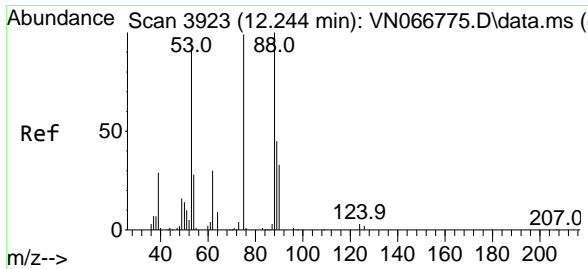
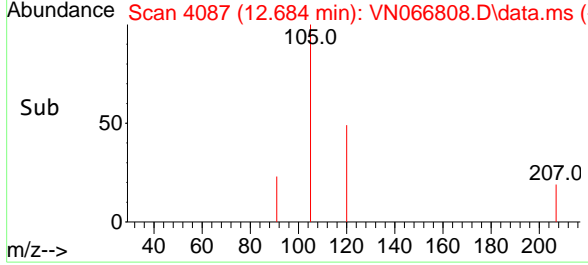
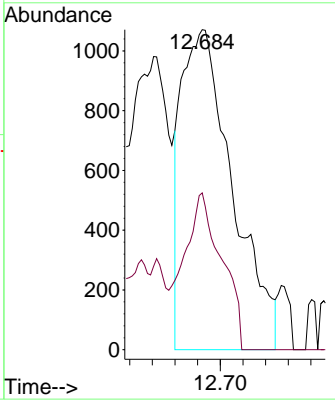


#80
 1,3,5-Trimethylbenzene
 Concen: 0.27 ug/l
 RT: 12.684 min Scan# 4087
 Delta R.T. 0.005 min
 Lab File: VN066808.D
 Acq: 28 Apr 2021 13:35

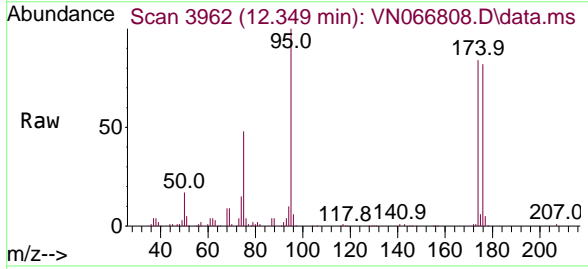
Instrument :
 MSVOA_N
 ClientSampled :



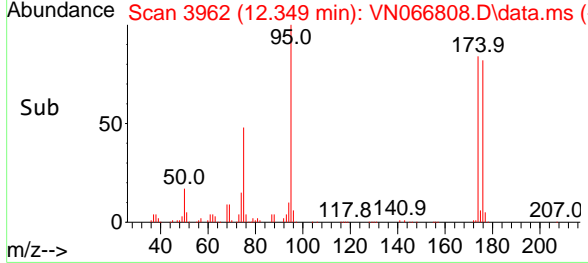
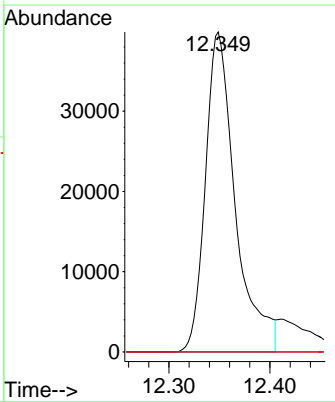
Tgt Ion:105 Resp: 3351
 Ion Ratio Lower Upper
 105 100
 120 35.4 24.3 72.8

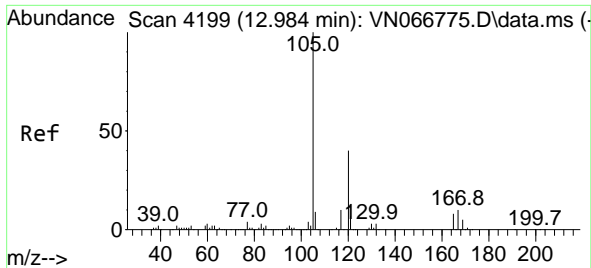


#81
 trans-1,4-Dichloro-2-butene
 Concen: 54.41 ug/l
 RT: 12.349 min Scan# 3962
 Delta R.T. 0.105 min
 Lab File: VN066808.D
 Acq: 28 Apr 2021 13:35



Tgt Ion: 75 Resp: 82236
 Ion Ratio Lower Upper
 75 100
 53 0.0 74.6 111.8#
 89 0.0 35.8 53.8#

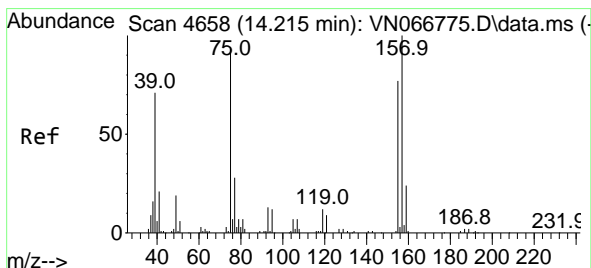
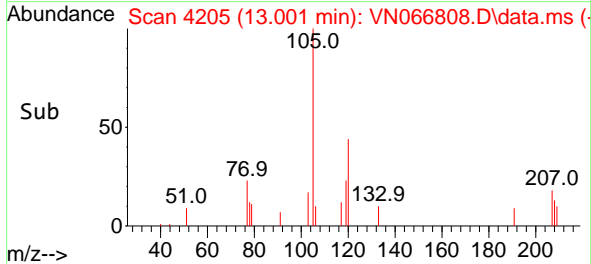
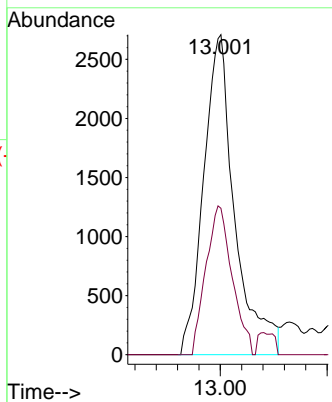
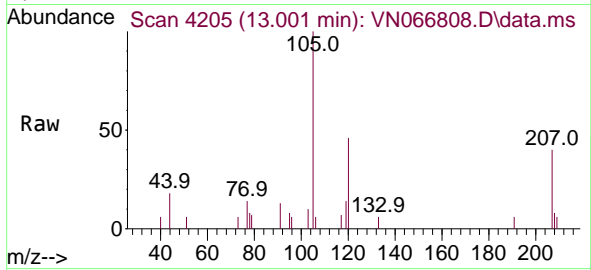




#84
 1,2,4-Trimethylbenzene
 Concen: 0.47 ug/l
 RT: 13.001 min Scan# 4205
 Delta R.T. 0.017 min
 Lab File: VN066808.D
 Acq: 28 Apr 2021 13:35

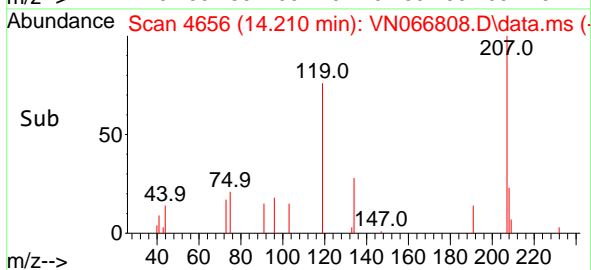
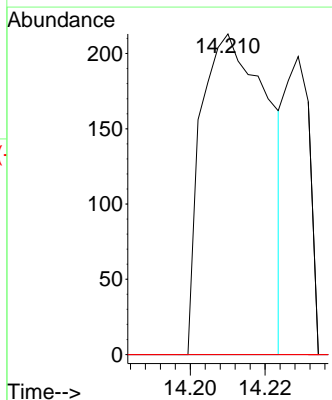
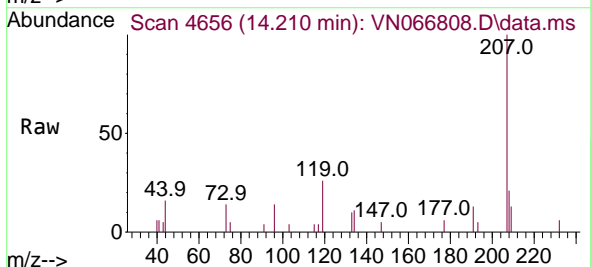
Instrument :
 MSVOA_N
 ClientSampled :

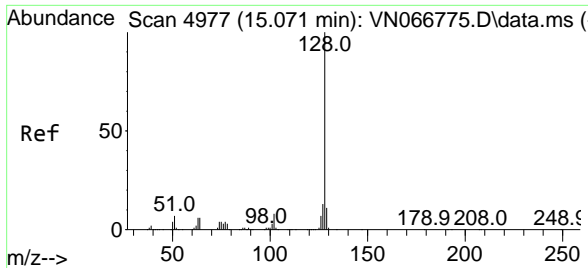
Tgt Ion:105 Resp: 5468
 Ion Ratio Lower Upper
 105 100
 120 39.2 22.4 67.0



#92
 1,2-Dibromo-3-Chloropropane
 Concen: 0.31 ug/l
 RT: 14.210 min Scan# 4656
 Delta R.T. -0.005 min
 Lab File: VN066808.D
 Acq: 28 Apr 2021 13:35

Tgt Ion: 75 Resp: 266
 Ion Ratio Lower Upper
 75 100
 155 0.0 44.1 132.4#
 157 0.0 56.0 168.2#





#95
 Naphthalene
 Concen: 1.15 ug/l
 RT: 15.092 min Scan# 4985
 Delta R.T. 0.021 min
 Lab File: VN066808.D
 Acq: 28 Apr 2021 13:35

Instrument :
 MSVOA_N
 ClientSampled :

Tgt Ion	Resp	Lower	Upper
128	100		
127	7.8	10.2	15.2#
129	5.4	8.6	13.0#

