

Data Path : Z:\voasrv\HPCHEM1\MSVOA_N\Data\VN042921\
 Data File : VN066889.D
 Acq On : 30 Apr 2021 2:53
 Operator : JC/MD
 Sample : M2137-22
 Misc : 5.00mL/MSVOA_N/WATER
 ALS Vial : 40 Sample Multiplier: 1

Instrument :
 MSVOA_N
 ClientSampled :

Quant Time: Apr 30 06:32:44 2021
 Quant Method : Z:\voasrv\HPCHEM1\MSVOA_N\methods\82N042721W.M
 Quant Title : SW846 8260
 QLast Update : Tue Apr 27 16:02:50 2021
 Response via : Initial Calibration

Compound	R.T.	QIon	Response	Conc	Units	Dev(Min)

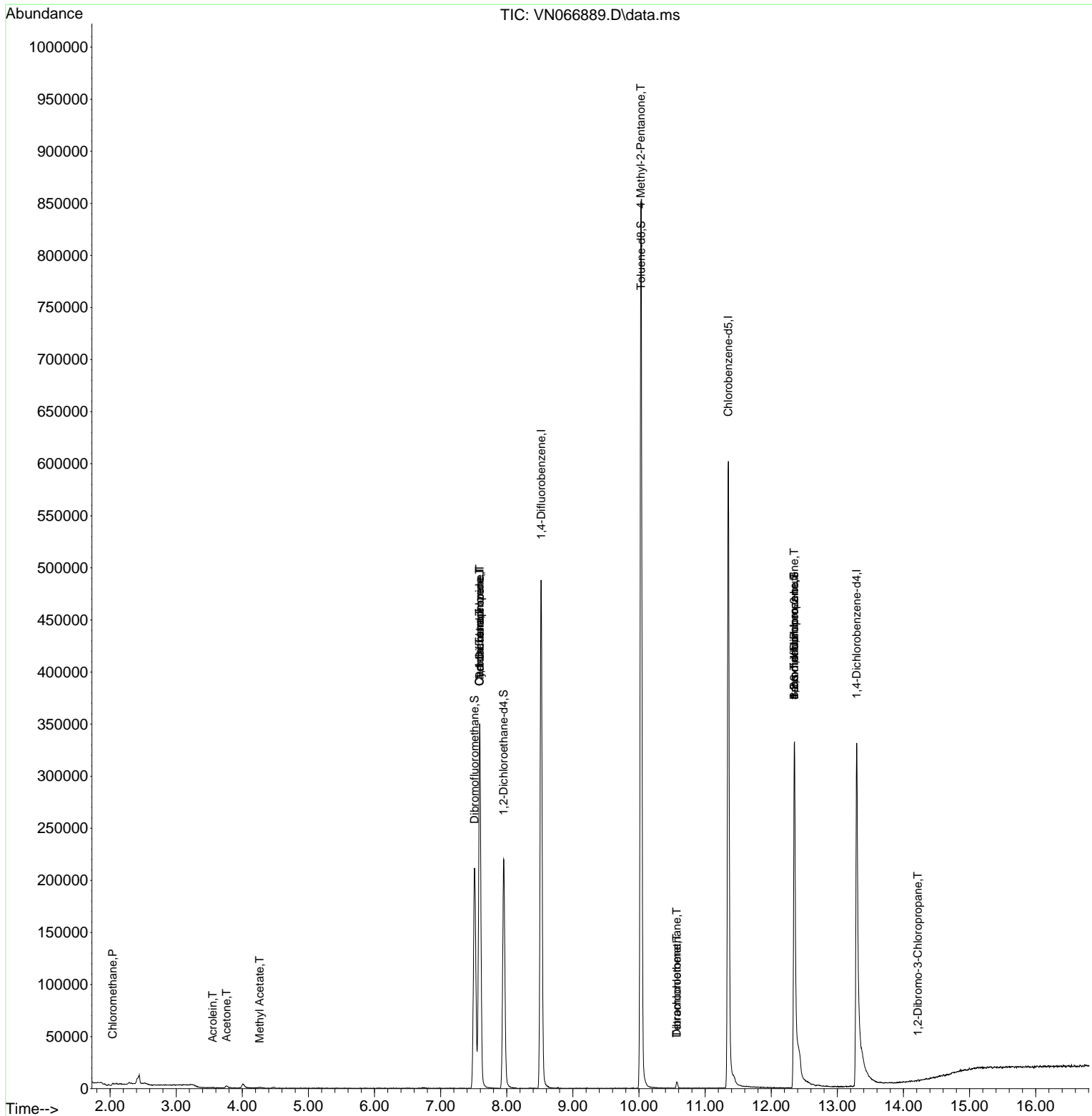
Internal Standards						
1) Pentafluorobenzene	7.591	168	313347	50.00	ug/l	0.00
34) 1,4-Difluorobenzene	8.522	114	473697	50.00	ug/l	0.00
63) Chlorobenzene-d5	11.351	117	415191	50.00	ug/l	0.00
72) 1,4-Dichlorobenzene-d4	13.293	152	144267	50.00	ug/l	0.00
System Monitoring Compounds						
33) 1,2-Dichloroethane-d4	7.953	65	187670	46.61	ug/l	0.00
Spiked Amount	50.000	Range 61 - 141	Recovery =	93.22%		
35) Dibromofluoromethane	7.513	113	170123	58.18	ug/l	0.00
Spiked Amount	50.000	Range 69 - 133	Recovery =	116.36%		
50) Toluene-d8	10.032	98	619830	54.00	ug/l	0.00
Spiked Amount	50.000	Range 65 - 126	Recovery =	108.00%		
62) 4-Bromofluorobenzene	12.349	95	172299	44.37	ug/l	0.00
Spiked Amount	50.000	Range 58 - 135	Recovery =	88.74%		
Target Compounds						
						Qvalue
3) Chloromethane	2.039	50	975	0.22	ug/l #	87
13) Acrolein	3.552	56	296	0.57	ug/l	94
16) Acetone	3.761	43	3780	2.49	ug/l #	85
18) Methyl Acetate	4.263	43	1111	1.38	ug/l #	72
31) Cyclohexane	7.588	56	4647	0.75	ug/l #	1
36) 1,1-Dichloropropene	7.591	75	19591	4.45	ug/l #	49
38) Carbon Tetrachloride	7.588	117	25971	6.15	ug/l #	17
51) 4-Methyl-2-Pentanone	10.026	43	2185	0.54	ug/l #	1
60) Dibromochloromethane	10.573	129	1427	0.42	ug/l #	11
64) Tetrachloroethene	10.571	164	1701	0.62	ug/l	97
71) Bromoform	12.349	173	953	0.42	ug/l #	1
76) 1,2,3-Trichloropropane	12.349	75	66766	21.96	ug/l #	100
81) trans-1,4-Dichloro-2-b...	12.349	75	66766	59.74	ug/l #	12
92) 1,2-Dibromo-3-Chloropr...	14.218	75	125	0.20	ug/l #	1

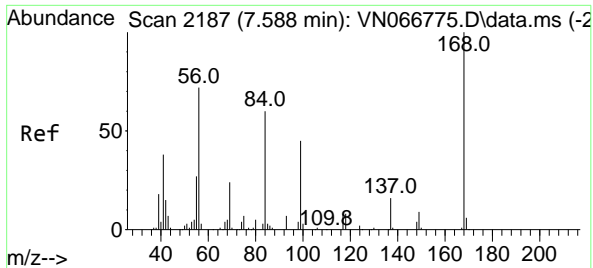
(#) = qualifier out of range (m) = manual integration (+) = signals summed

Data Path : Z:\voasrv\HPCHEM1\MSVOA_N\Data\VN042921\
 Data File : VN066889.D
 Acq On : 30 Apr 2021 2:53
 Operator : JC/MD
 Sample : M2137-22
 Misc : 5.00mL/MSVOA_N/WATER
 ALS Vial : 40 Sample Multiplier: 1

Instrument :
 MSVOA_N
 ClientSampled :

Quant Time: Apr 30 06:32:44 2021
 Quant Method : Z:\voasrv\HPCHEM1\MSVOA_N\methods\82N042721W.M
 Quant Title : SW846 8260
 QLast Update : Tue Apr 27 16:02:50 2021
 Response via : Initial Calibration

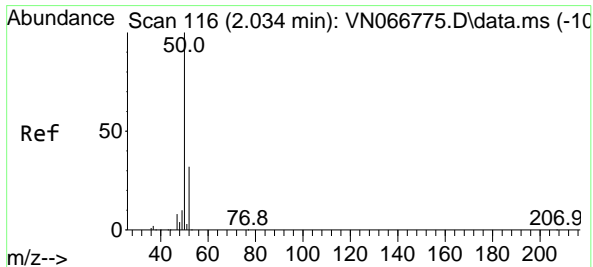
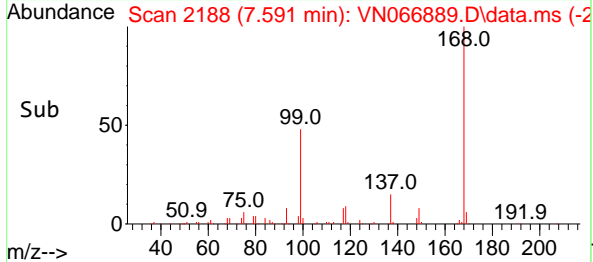
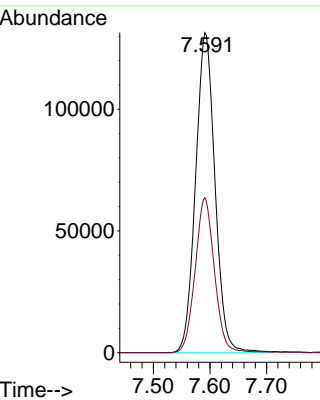
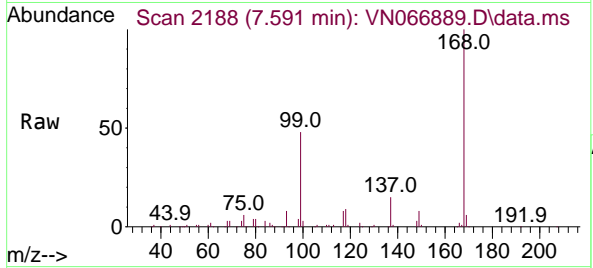




#1
 Pentafluorobenzene
 Concen: 50.00 ug/l
 RT: 7.591 min Scan# 2188
 Delta R.T. 0.003 min
 Lab File: VN066889.D
 Acq: 30 Apr 2021 2:53

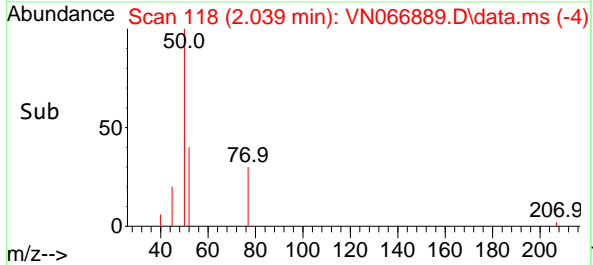
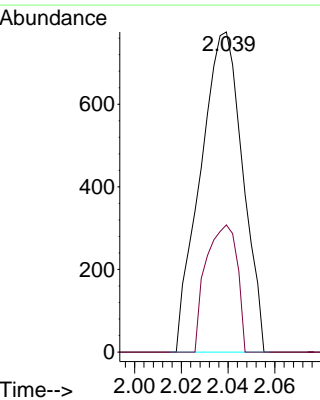
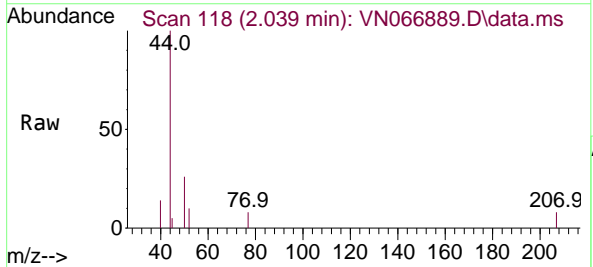
Instrument :
 MSVOA_N
 ClientSampled :

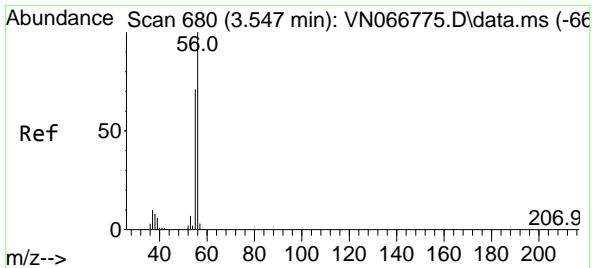
Tgt Ion:168 Resp: 313347
 Ion Ratio Lower Upper
 168 100
 99 48.4 42.6 63.8



#3
 Chloromethane
 Concen: 0.22 ug/l
 RT: 2.039 min Scan# 118
 Delta R.T. 0.005 min
 Lab File: VN066889.D
 Acq: 30 Apr 2021 2:53

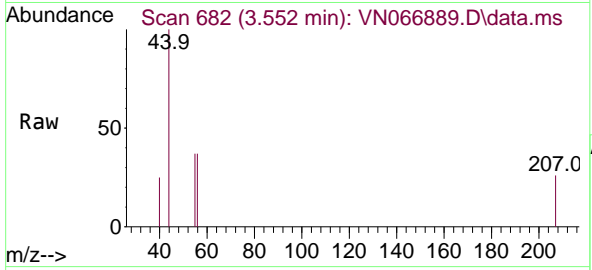
Tgt Ion: 50 Resp: 975
 Ion Ratio Lower Upper
 50 100
 52 39.7 25.8 38.8#



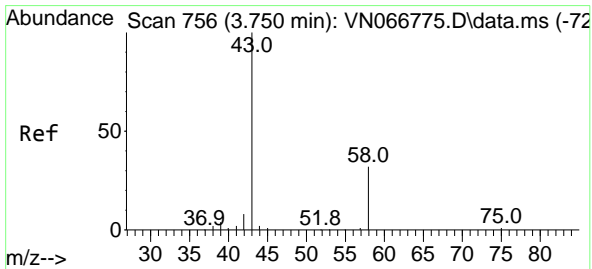
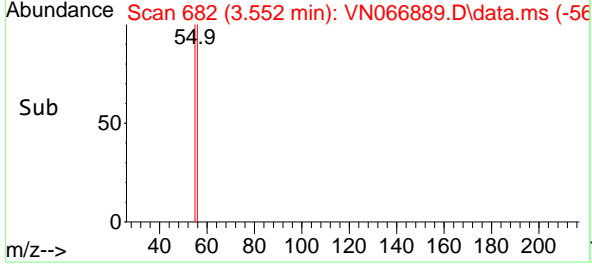
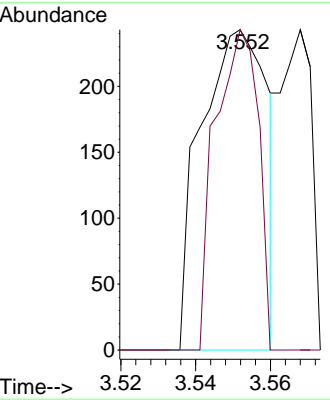


#13
 Acrolein
 Concen: 0.57 ug/l
 RT: 3.552 min Scan# 682
 Delta R.T. 0.005 min
 Lab File: VN066889.D
 Acq: 30 Apr 2021 2:53

Instrument :
 MSVOA_N
 ClientSampled :

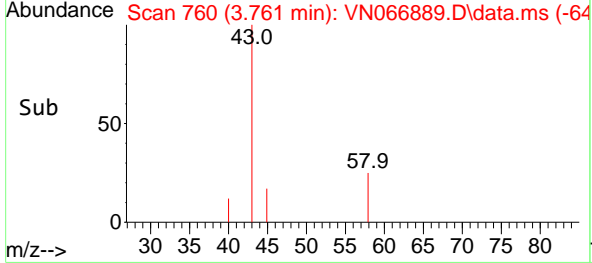
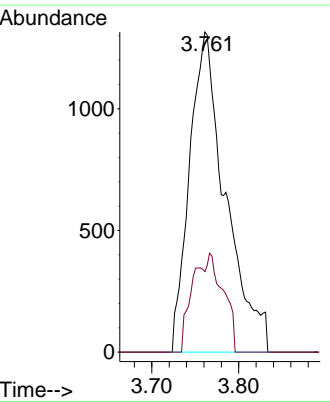
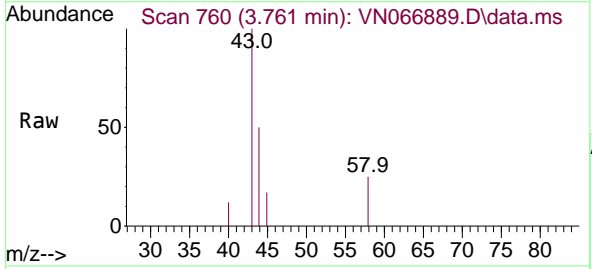


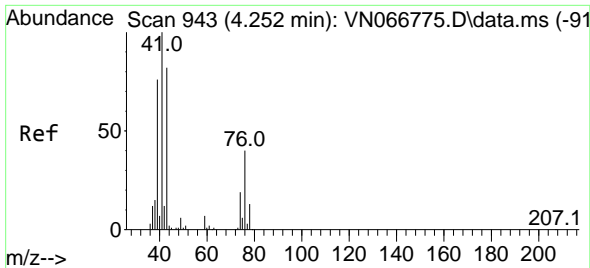
Tgt Ion: 56 Resp: 296
 Ion Ratio Lower Upper
 56 100
 55 65.2 56.0 84.0



#16
 Acetone
 Concen: 2.49 ug/l
 RT: 3.761 min Scan# 760
 Delta R.T. 0.011 min
 Lab File: VN066889.D
 Acq: 30 Apr 2021 2:53

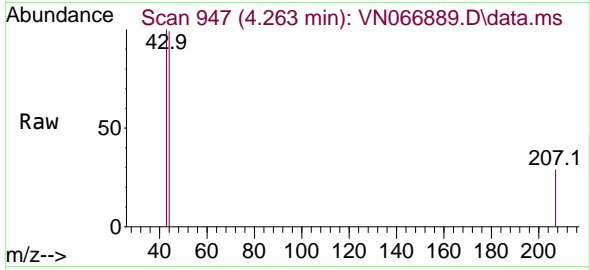
Tgt Ion: 43 Resp: 3780
 Ion Ratio Lower Upper
 43 100
 58 25.2 27.0 40.6#



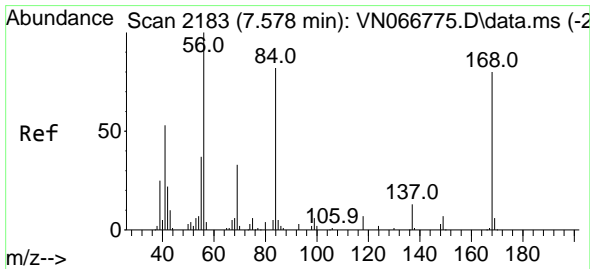
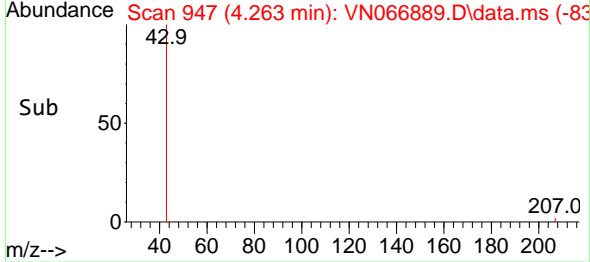
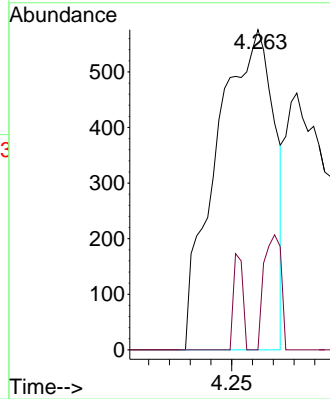


#18
 Methyl Acetate
 Concen: 1.38 ug/l
 RT: 4.263 min Scan# 947
 Delta R.T. 0.011 min
 Lab File: VN066889.D
 Acq: 30 Apr 2021 2:53

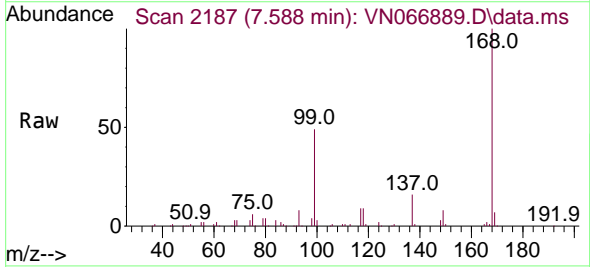
Instrument :
 MSVOA_N
 ClientSampled :



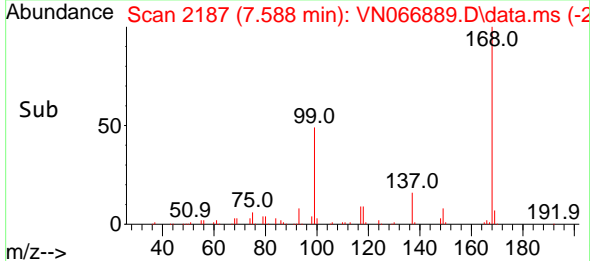
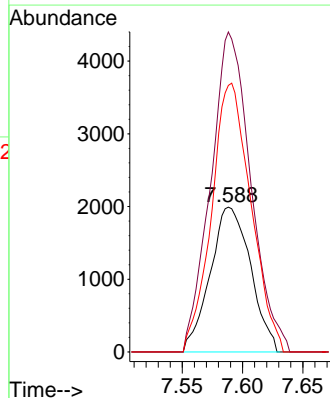
Tgt Ion: 43 Resp: 1111
 Ion Ratio Lower Upper
 43 100
 74 10.6 19.5 29.3#

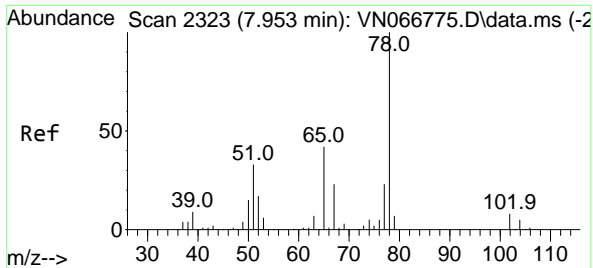


#31
 Cyclohexane
 Concen: 0.75 ug/l
 RT: 7.588 min Scan# 2187
 Delta R.T. 0.010 min
 Lab File: VN066889.D
 Acq: 30 Apr 2021 2:53



Tgt Ion: 56 Resp: 4647
 Ion Ratio Lower Upper
 56 100
 69 220.9 26.6 39.8#
 84 184.1 70.4 105.6#

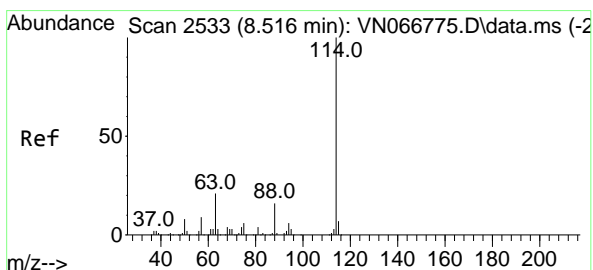
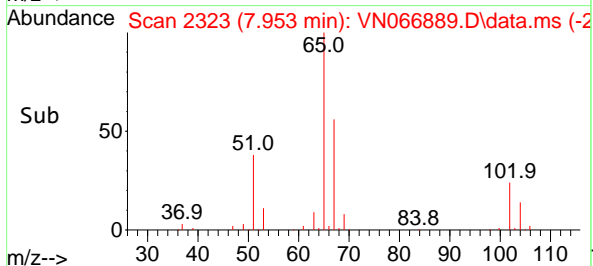
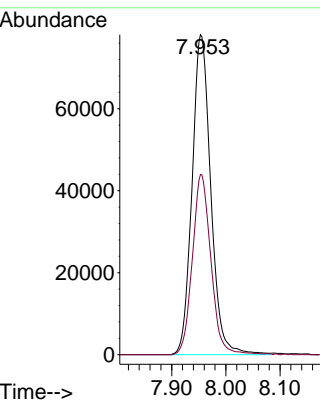
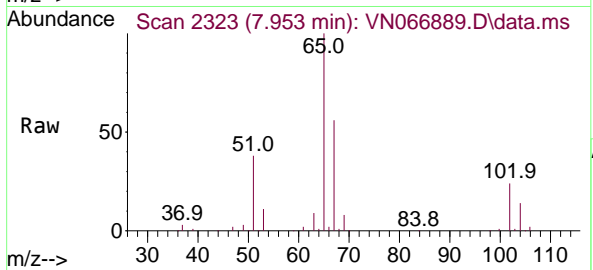




#33
 1,2-Dichloroethane-d4
 Concen: 46.61 ug/l
 RT: 7.953 min Scan# 2323
 Delta R.T. -0.000 min
 Lab File: VN066889.D
 Acq: 30 Apr 2021 2:53

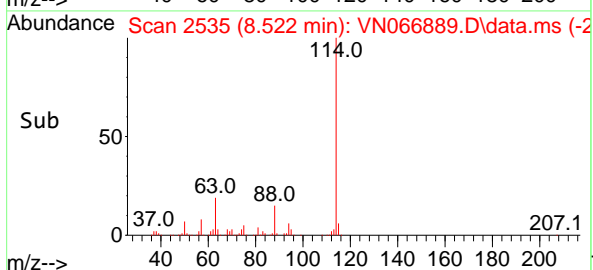
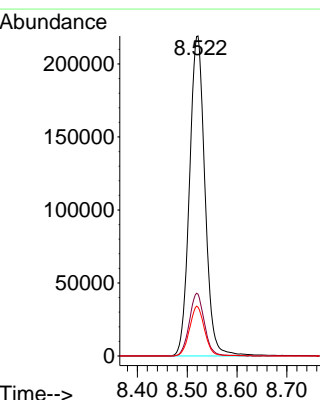
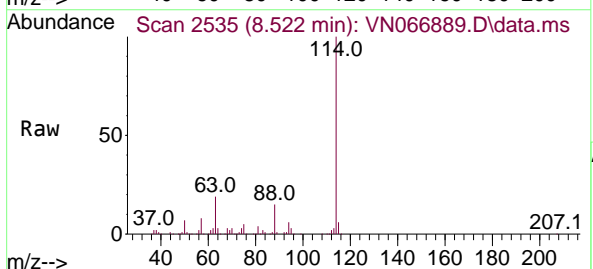
Instrument :
 MSVOA_N
 ClientSampled :

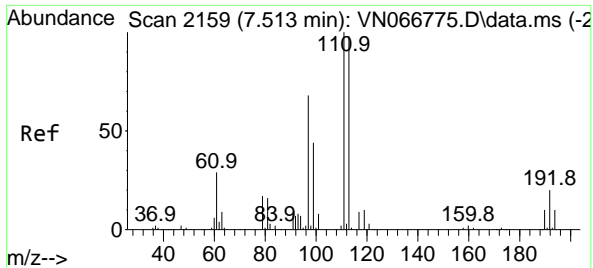
Tgt Ion: 65 Resp: 187670
 Ion Ratio Lower Upper
 65 100
 67 55.7 0.0 107.2



#34
 1,4-Difluorobenzene
 Concen: 50.00 ug/l
 RT: 8.522 min Scan# 2535
 Delta R.T. 0.006 min
 Lab File: VN066889.D
 Acq: 30 Apr 2021 2:53

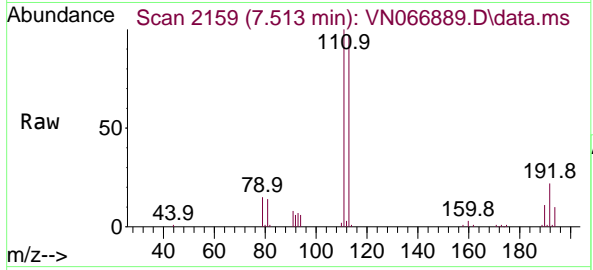
Tgt Ion:114 Resp: 473697
 Ion Ratio Lower Upper
 114 100
 63 19.3 0.0 38.6
 88 15.3 0.0 30.6



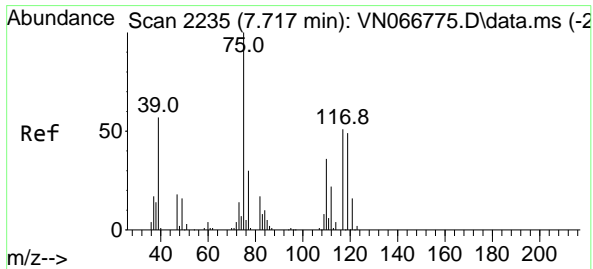
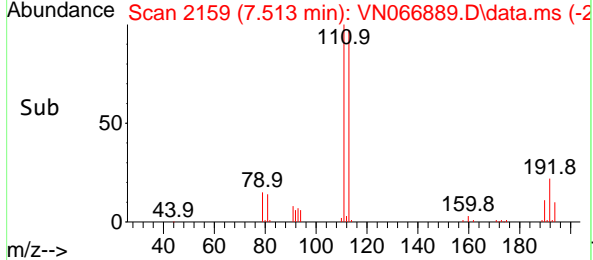
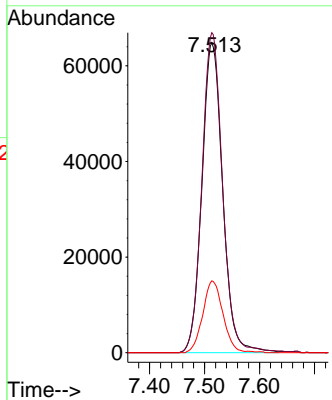


#35
 Dibromofluoromethane
 Concen: 58.18 ug/l
 RT: 7.513 min Scan# 2159
 Delta R.T. 0.000 min
 Lab File: VN066889.D
 Acq: 30 Apr 2021 2:53

Instrument :
 MSVOA_N
 ClientSampled :

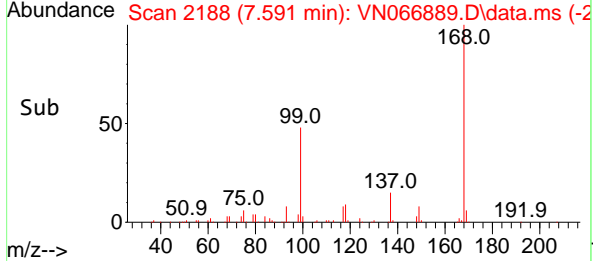
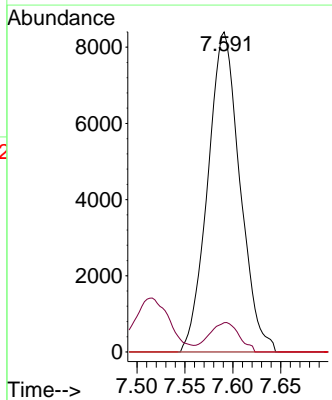
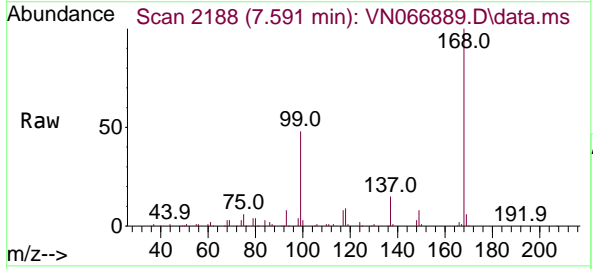


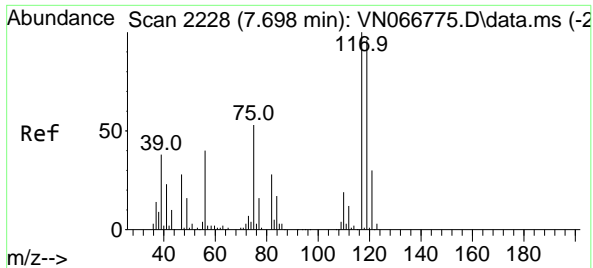
Tgt Ion:113 Resp: 170123
 Ion Ratio Lower Upper
 113 100
 111 102.7 82.2 123.2
 192 22.5 15.4 23.0



#36
 1,1-Dichloropropene
 Concen: 4.45 ug/l
 RT: 7.591 min Scan# 2188
 Delta R.T. -0.126 min
 Lab File: VN066889.D
 Acq: 30 Apr 2021 2:53

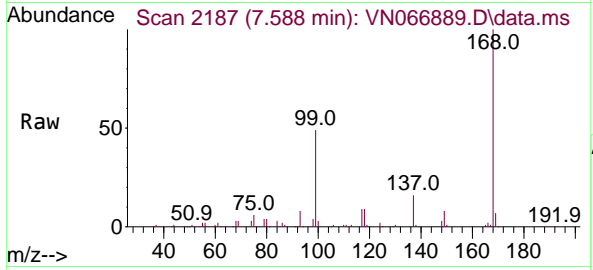
Tgt Ion: 75 Resp: 19591
 Ion Ratio Lower Upper
 75 100
 110 8.5 18.2 54.6#
 77 0.0 24.9 37.3#





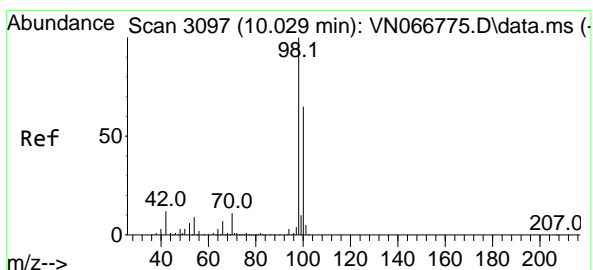
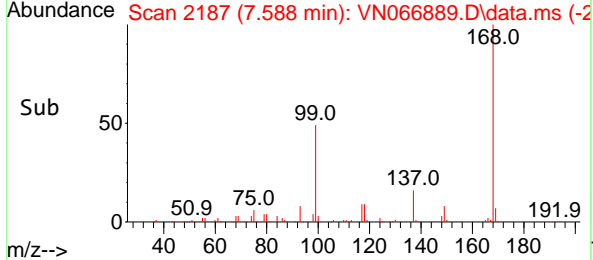
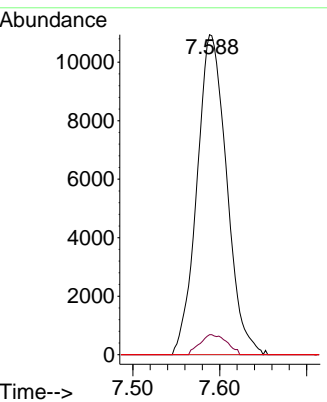
#38
 Carbon Tetrachloride
 Concen: 6.15 ug/l
 RT: 7.588 min Scan# 2187
 Delta R.T. -0.110 min
 Lab File: VN066889.D
 Acq: 30 Apr 2021 2:53

Instrument :
 MSVOA_N
 ClientSampled :

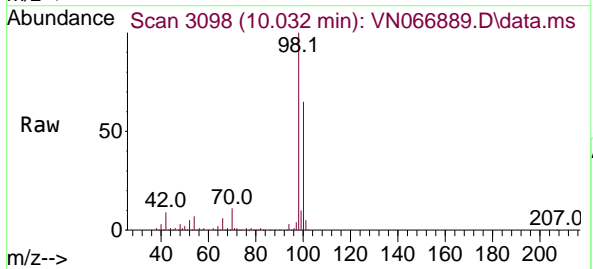


Tgt Ion: 117 Resp: 25971

Ion	Ratio	Lower	Upper
117	100		
119	6.3	76.0	114.0#
121	0.0	24.5	36.7#

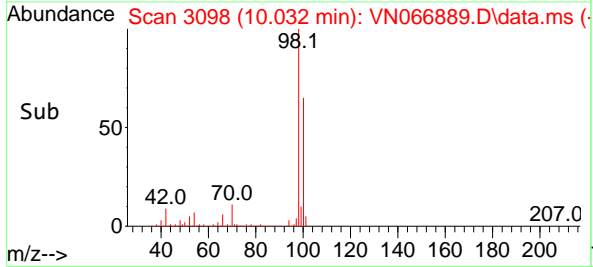
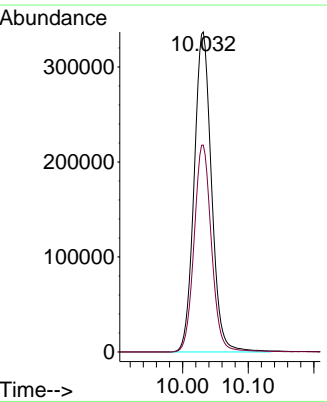


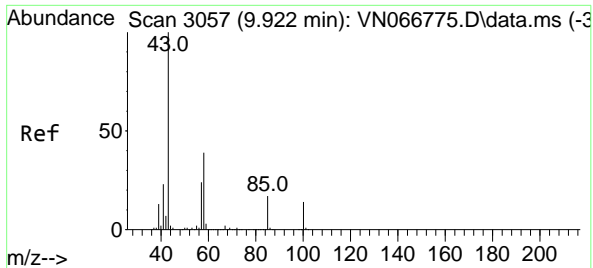
#50
 Toluene-d8
 Concen: 54.00 ug/l
 RT: 10.032 min Scan# 3098
 Delta R.T. 0.003 min
 Lab File: VN066889.D
 Acq: 30 Apr 2021 2:53



Tgt Ion: 98 Resp: 619830

Ion	Ratio	Lower	Upper
98	100		
100	64.8	50.5	75.7

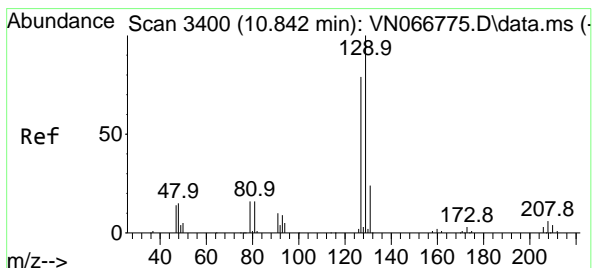
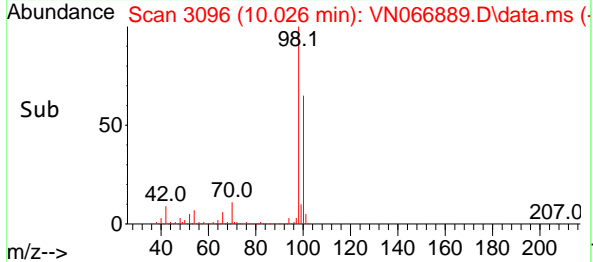
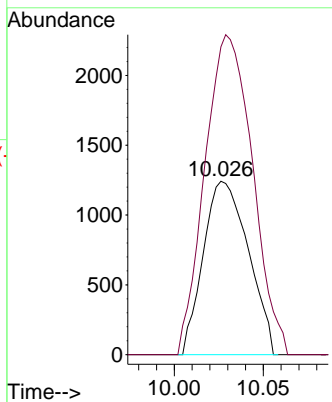
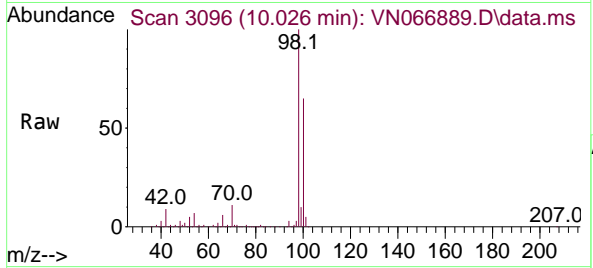




#51
 4-Methyl-2-Pentanone
 Concen: 0.54 ug/l
 RT: 10.026 min Scan# 3096
 Delta R.T. 0.104 min
 Lab File: VN066889.D
 Acq: 30 Apr 2021 2:53

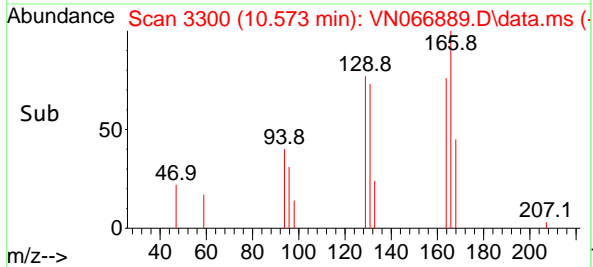
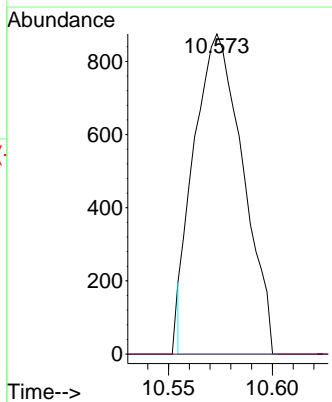
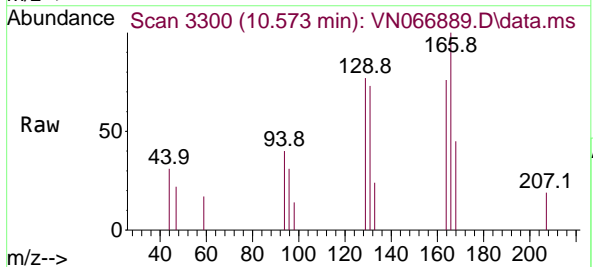
Instrument :
 MSVOA_N
 ClientSampled :

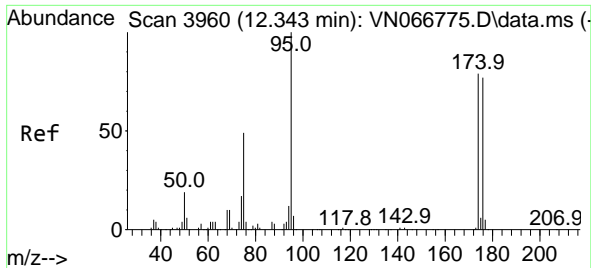
Tgt Ion: 43 Resp: 2185
 Ion Ratio Lower Upper
 43 100
 58 195.2 32.5 48.7#



#60
 Dibromochloromethane
 Concen: 0.42 ug/l
 RT: 10.573 min Scan# 3300
 Delta R.T. -0.269 min
 Lab File: VN066889.D
 Acq: 30 Apr 2021 2:53

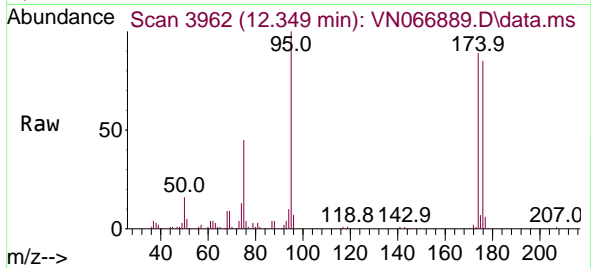
Tgt Ion: 129 Resp: 1427
 Ion Ratio Lower Upper
 129 100
 127 0.0 38.5 115.5#



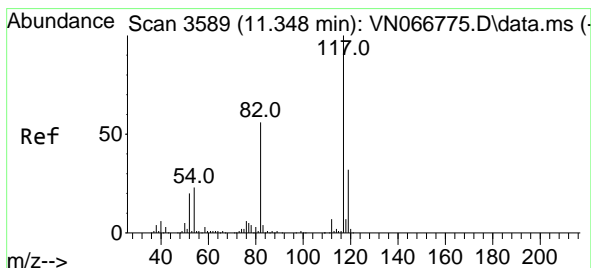
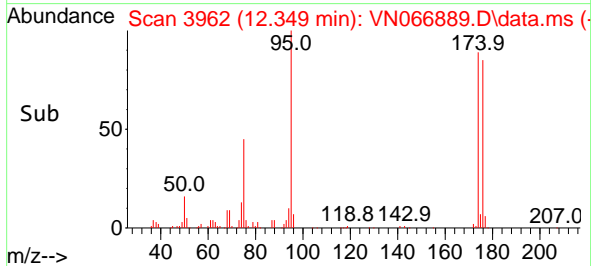
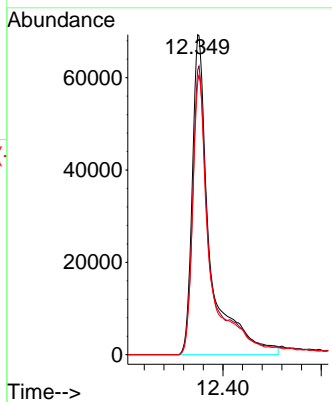


#62
 4-Bromofluorobenzene
 Concen: 44.37 ug/l
 RT: 12.349 min Scan# 3962
 Delta R.T. 0.006 min
 Lab File: VN066889.D
 Acq: 30 Apr 2021 2:53

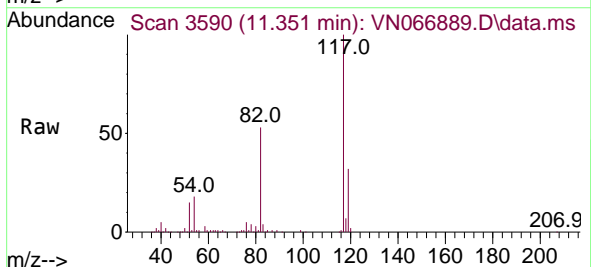
Instrument :
 MSVOA_N
 ClientSampled :



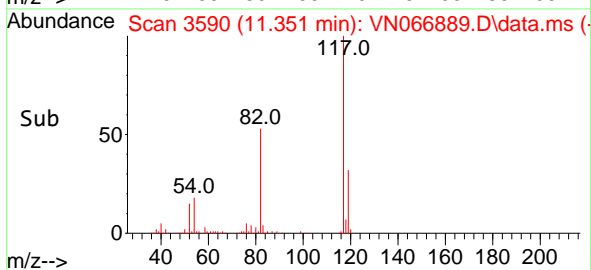
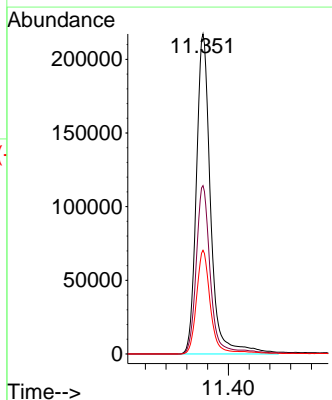
Tgt Ion: 95 Resp: 172299
 Ion Ratio Lower Upper
 95 100
 174 76.1 0.0 169.0
 176 85.4 0.0 162.4

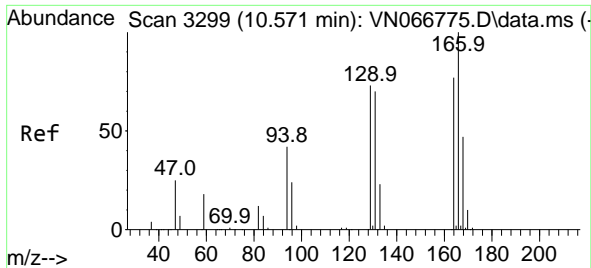


#63
 Chlorobenzene-d5
 Concen: 50.00 ug/l
 RT: 11.351 min Scan# 3590
 Delta R.T. 0.003 min
 Lab File: VN066889.D
 Acq: 30 Apr 2021 2:53



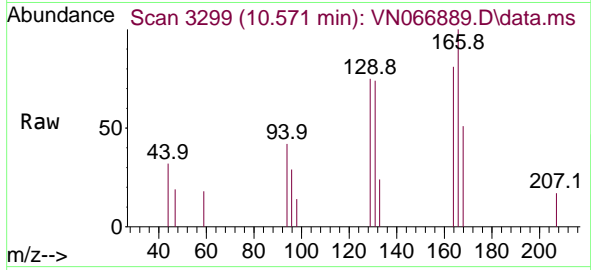
Tgt Ion: 117 Resp: 415191
 Ion Ratio Lower Upper
 117 100
 82 52.6 43.7 65.5
 119 32.4 26.1 39.1



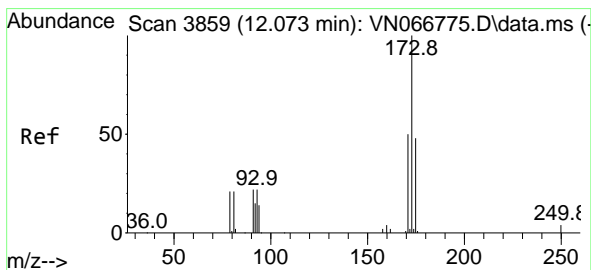
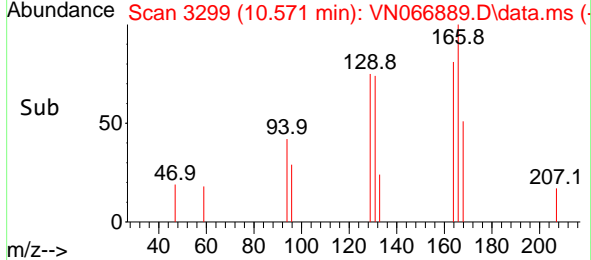
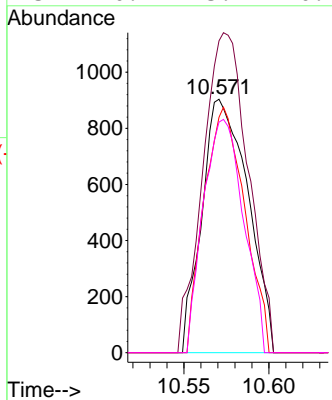


#64
 Tetrachloroethene
 Concen: 0.62 ug/l
 RT: 10.571 min Scan# 3299
 Delta R.T. -0.000 min
 Lab File: VN066889.D
 Acq: 30 Apr 2021 2:53

Instrument :
 MSVOA_N
 ClientSampled :

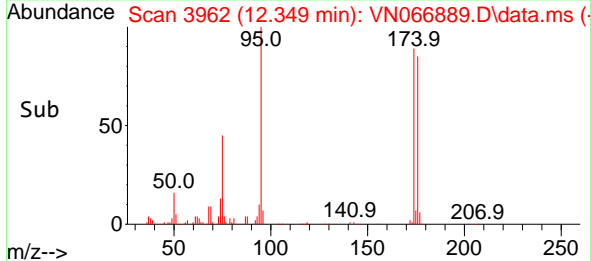
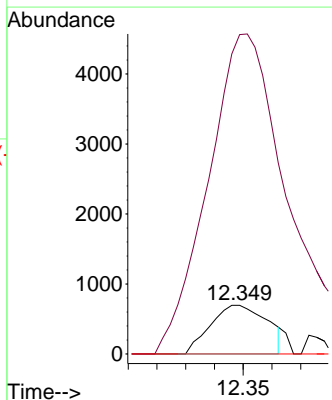
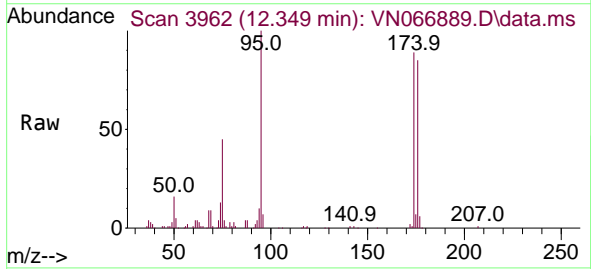


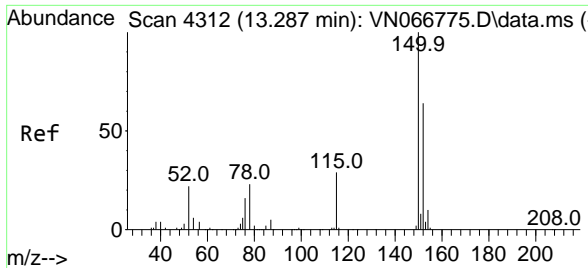
Tgt Ion:164 Resp: 1701
 Ion Ratio Lower Upper
 164 100
 166 123.0 102.6 154.0
 129 92.8 76.2 114.4
 131 90.9 73.4 110.2



#71
 Bromoform
 Concen: 0.42 ug/l
 RT: 12.349 min Scan# 3962
 Delta R.T. 0.276 min
 Lab File: VN066889.D
 Acq: 30 Apr 2021 2:53

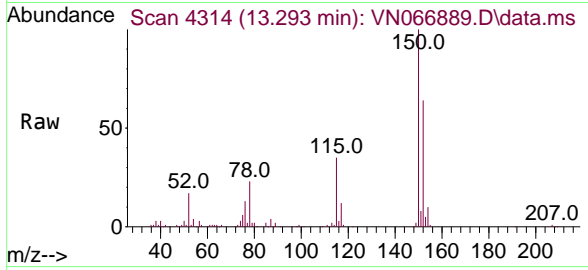
Tgt Ion:173 Resp: 953
 Ion Ratio Lower Upper
 173 100
 175 728.4 23.8 71.2#
 254 0.0 0.0 0.0



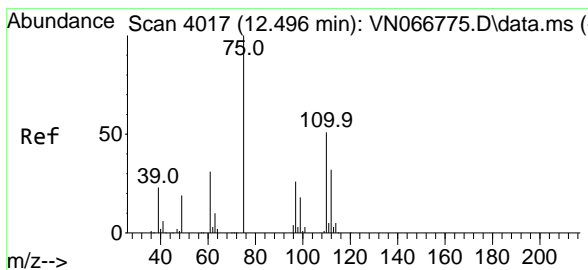
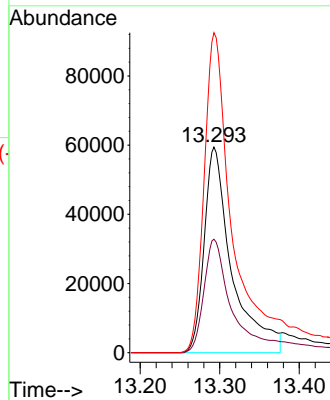
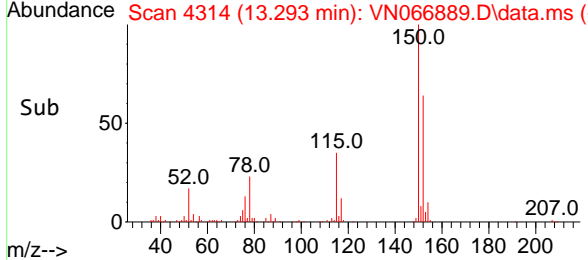


#72
 1,4-Dichlorobenzene-d4
 Concen: 50.00 ug/l
 RT: 13.293 min Scan# 4314
 Delta R.T. 0.005 min
 Lab File: VN066889.D
 Acq: 30 Apr 2021 2:53

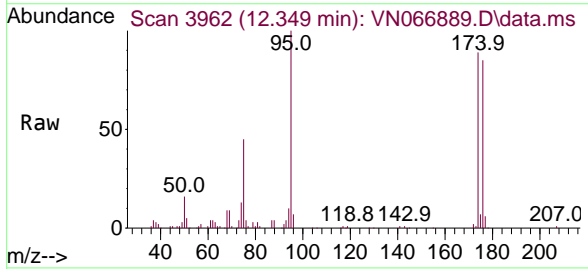
Instrument :
 MSVOA_N
 ClientSampled :



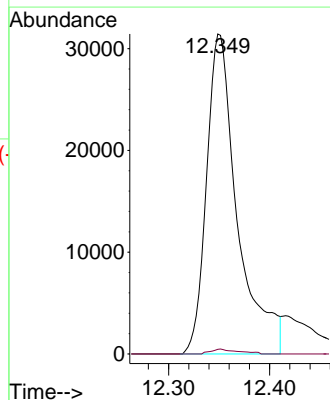
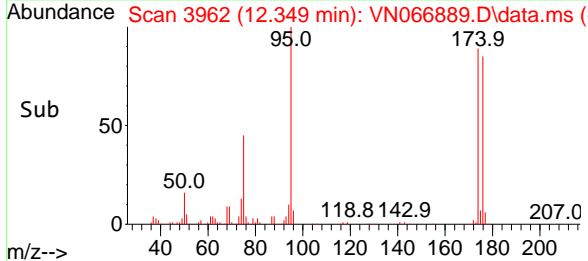
Tgt Ion:152 Resp: 144267
 Ion Ratio Lower Upper
 152 100
 115 61.2 28.5 85.6
 150 180.9 0.0 347.6

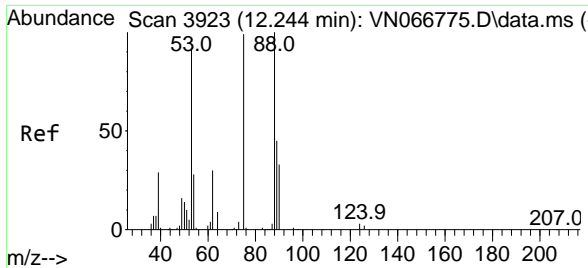


#76
 1,2,3-Trichloropropane
 Concen: 21.96 ug/l
 RT: 12.349 min Scan# 3962
 Delta R.T. -0.147 min
 Lab File: VN066889.D
 Acq: 30 Apr 2021 2:53



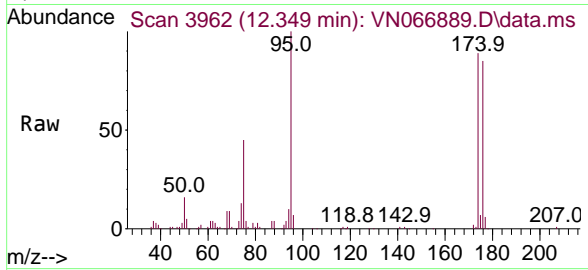
Tgt Ion: 75 Resp: 66766
 Ion Ratio Lower Upper
 75 100
 77 1.3 0.0 0.0#



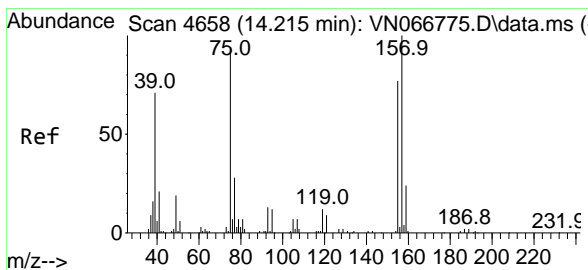
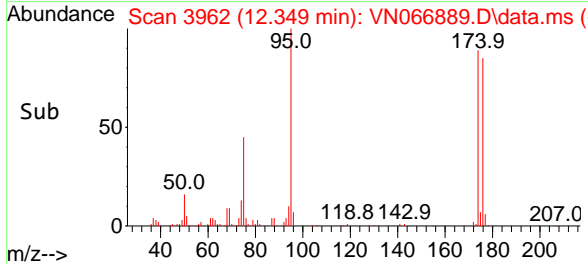
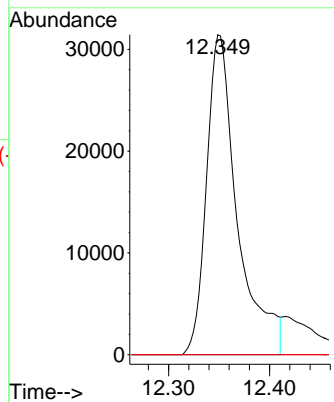


#81
 trans-1,4-Dichloro-2-butene
 Concen: 59.74 ug/l
 RT: 12.349 min Scan# 3962
 Delta R.T. 0.105 min
 Lab File: VN066889.D
 Acq: 30 Apr 2021 2:53

Instrument :
 MSVOA_N
 ClientSampled :



Tgt Ion: 75 Resp: 66766
 Ion Ratio Lower Upper
 75 100
 53 0.0 74.6 111.8#
 89 0.0 35.8 53.8#



#92
 1,2-Dibromo-3-Chloropropane
 Concen: 0.20 ug/l
 RT: 14.218 min Scan# 4659
 Delta R.T. 0.003 min
 Lab File: VN066889.D
 Acq: 30 Apr 2021 2:53

Tgt Ion: 75 Resp: 125
 Ion Ratio Lower Upper
 75 100
 155 0.0 44.1 132.4#
 157 0.0 56.0 168.2#

