

Data Path : Z:\VOASRV\HPCHEM1\MSVOA N\DATA\VN043019\
 Data File : VN055311.D
 Acq On : 30 Apr 2019 16:27
 Operator : JC/SP
 Sample : K2194-16
 Misc : 5.00mL/MSVOA N/WATER
 ALS Vial : 15 Sample Multiplier: 1

Instrument :
 MSVOA_N
 ClientSampleId :
 JC-03-042919-H

Quant Time: May 01 09:09:57 2019
 Quant Method : Z:\VOASRV\HPCHEM1\MSVOA_N\METHODS\82N042919W.M
 Quant Title : SW846 8260
 QLast Update : Tue Apr 30 07:16:52 2019
 Response via : Initial Calibration

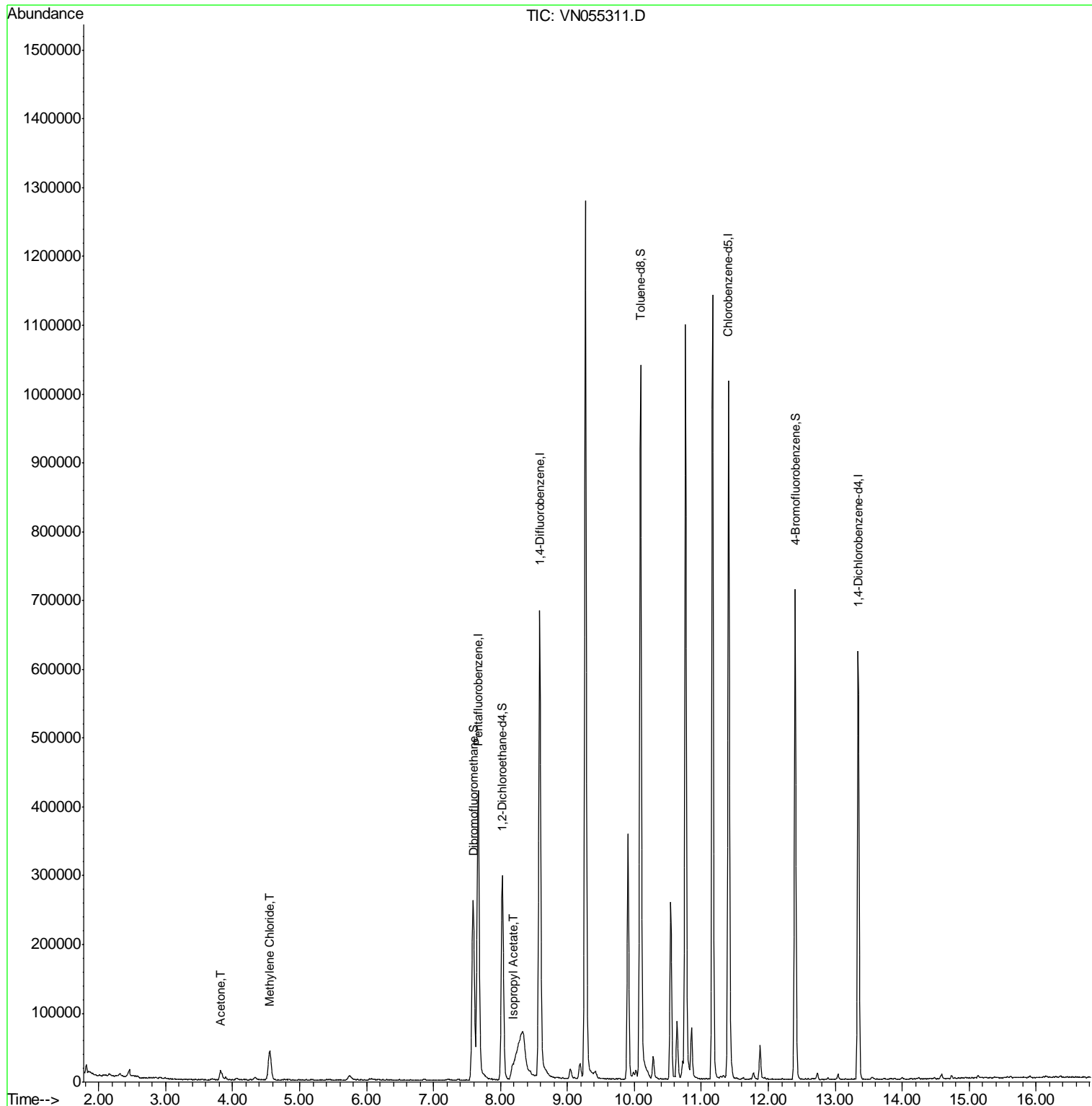
Internal Standards	R.T.	QIon	Response	Conc	Units	Dev(Min)
1) Pentafluorobenzene	7.67	168	353452	50.00	ug/l	0.00
34) 1,4-Difluorobenzene	8.59	114	609243	50.00	ug/l	0.00
63) Chlorobenzene-d5	11.41	117	574439	50.00	ug/l	0.00
72) 1,4-Dichlorobenzene-d4	13.34	152	167167	50.00	ug/l	0.00
System Monitoring Compounds						
33) 1,2-Dichloroethane-d4	8.03	65	251745	54.44	ug/l	0.00
Spiked Amount	50.000		Recovery	=	108.88%	
35) Dibromofluoromethane	7.59	113	201579	50.41	ug/l	0.00
Spiked Amount	50.000		Recovery	=	100.82%	
50) Toluene-d8	10.09	98	765738	53.03	ug/l	0.00
Spiked Amount	50.000		Recovery	=	106.06%	
62) 4-Bromofluorobenzene	12.40	95	243800	54.02	ug/l	0.00
Spiked Amount	50.000		Recovery	=	108.04%	
Target Compounds						
16) Acetone	3.82	43	23298	16.171	ug/l	95
20) Methylene Chloride	4.55	84	29080	6.613	ug/l	97
43) Isopropyl Acetate	8.17	43	22256	3.096	ug/l #	81

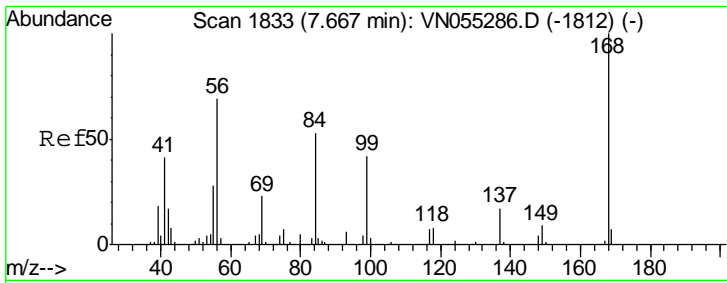
(#) = qualifier out of range (m) = manual integration (+) = signals summed

Data Path : Z:\VOASRV\HPCHEM1\MSVOA N\DATA\VN043019\
 Data File : VN055311.D
 Acq On : 30 Apr 2019 16:27
 Operator : JC/SP
 Sample : K2194-16
 Misc : 5.00mL/MSVOA N/WATER
 ALS Vial : 15 Sample Multiplier: 1

Instrument :
 MSVOA_N
 ClientSampleId :
 JC-03-042919-H

Quant Time: May 01 09:09:57 2019
 Quant Method : Z:\VOASRV\HPCHEM1\MSVOA_N\METHODS\82N042919W.M
 Quant Title : SW846 8260
 QLast Update : Tue Apr 30 07:16:52 2019
 Response via : Initial Calibration

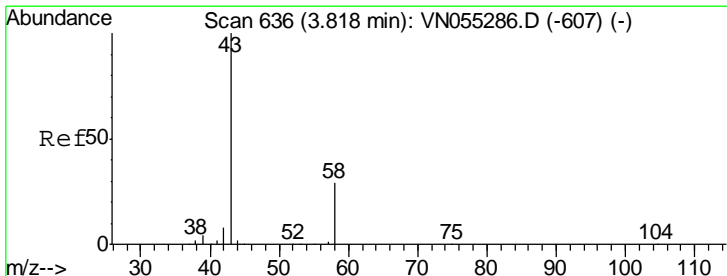
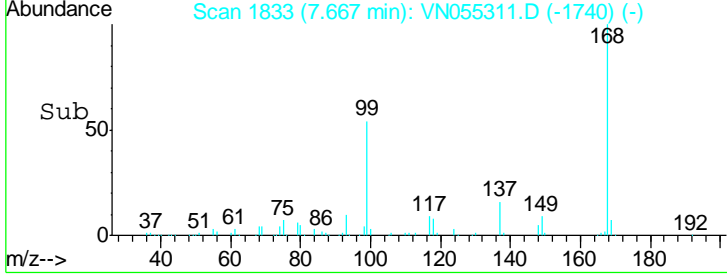
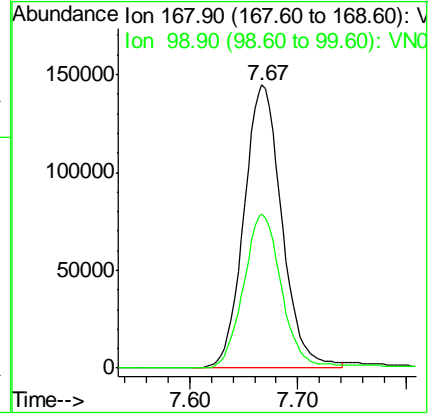
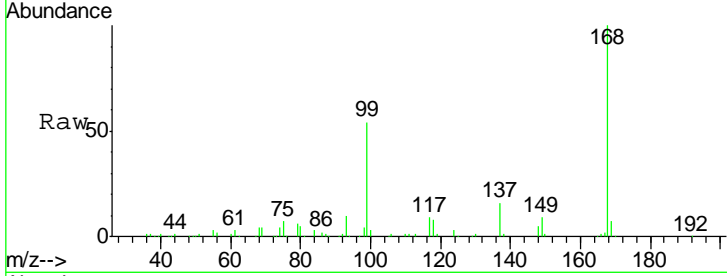




#1
 Pentafluorobenzene
 Concen: 50.000 ug/l
 RT: 7.67 min Scan# 1833
 Delta R.T. 0.00 min
 Lab File: VN055311.D
 Acq: 30 Apr 2019 16:27

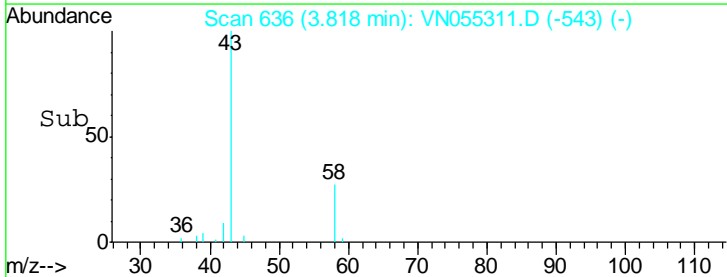
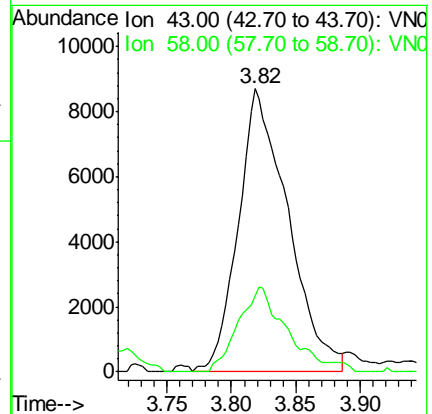
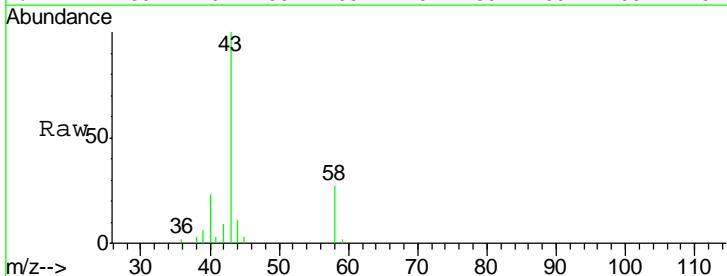
Instrument : MSVOA_N
 ClientSampled : JC-03-042919-H

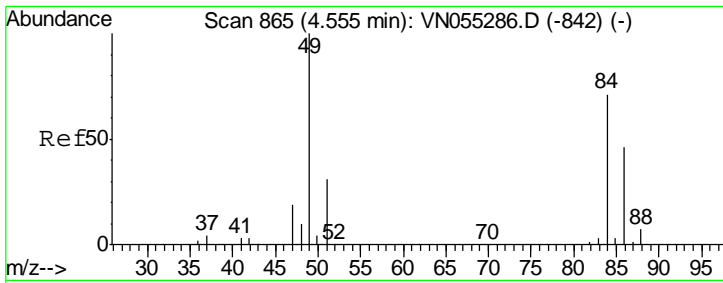
Tgt Ion: 168 Resp: 353452
 Ion Ratio Lower Upper
 168 100
 99 54.3 43.6 65.4



#16
 Acetone
 Concen: 16.171 ug/l
 RT: 3.82 min Scan# 636
 Delta R.T. 0.00 min
 Lab File: VN055311.D
 Acq: 30 Apr 2019 16:27

Tgt Ion: 43 Resp: 23298
 Ion Ratio Lower Upper
 43 100
 58 27.0 23.6 35.4

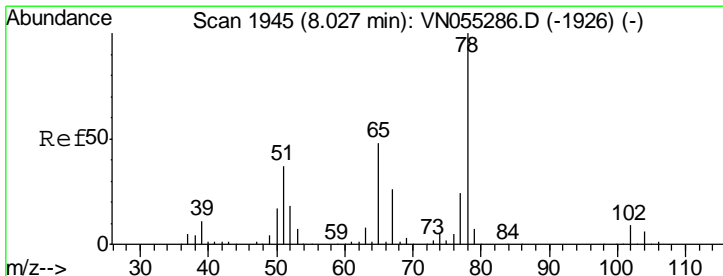
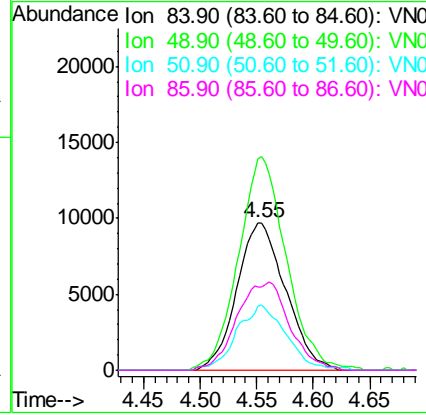
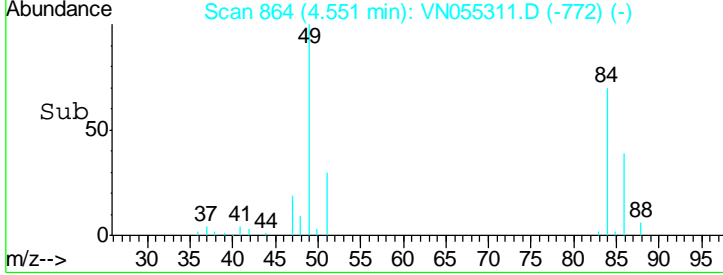
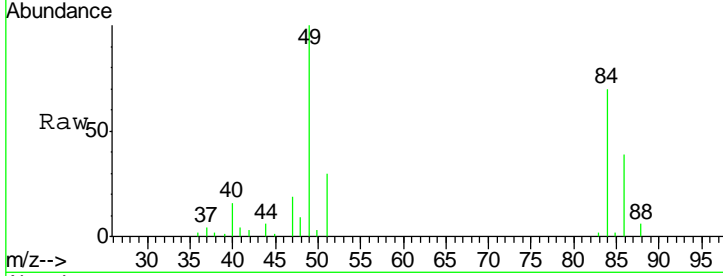




#20
 Methylene Chloride
 Concen: 6.613 ug/l
 RT: 4.55 min Scan# 864
 Delta R.T. -0.00 min
 Lab File: VN055311.D
 Acq: 30 Apr 2019 16:27

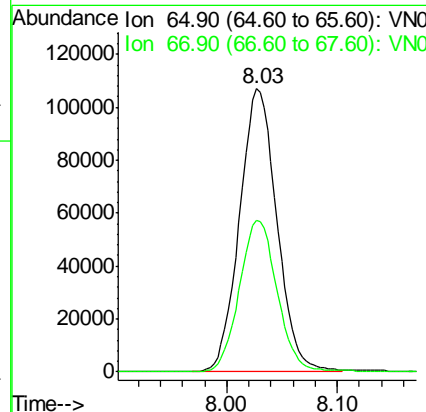
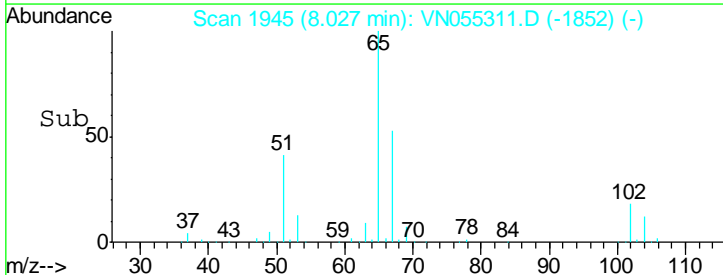
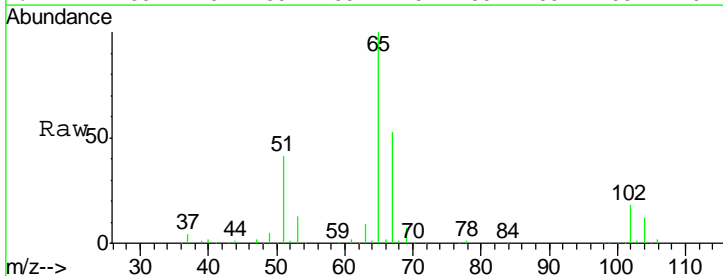
Instrument :
 MSVOA_N
 ClientSampled :
 JC-03-042919-H

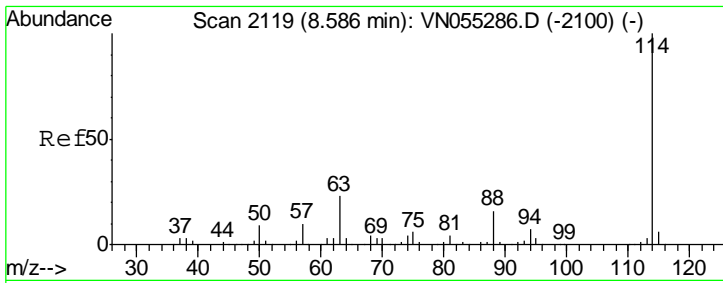
Tgt Ion	Resp	Lower	Upper
84	29080		
49	141.5	112.4	168.6
51	43.3	34.6	51.8
86	56.5	51.9	77.9



#33
 1,2-Dichloroethane-d4
 Concen: 54.444 ug/l
 RT: 8.03 min Scan# 1945
 Delta R.T. 0.00 min
 Lab File: VN055311.D
 Acq: 30 Apr 2019 16:27

Tgt Ion	Resp	Lower	Upper
65	251745		
67	54.2	0.0	106.8

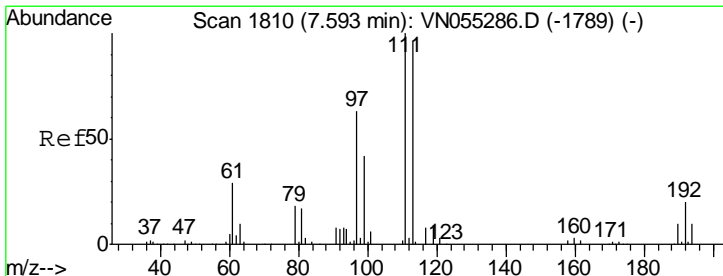
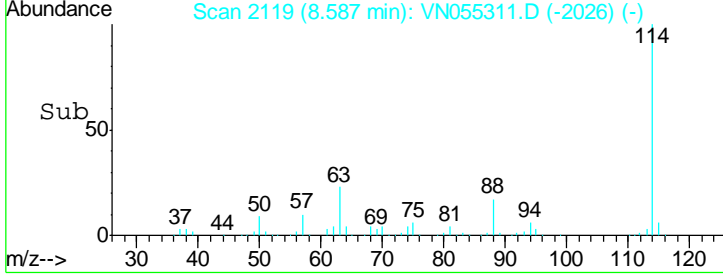
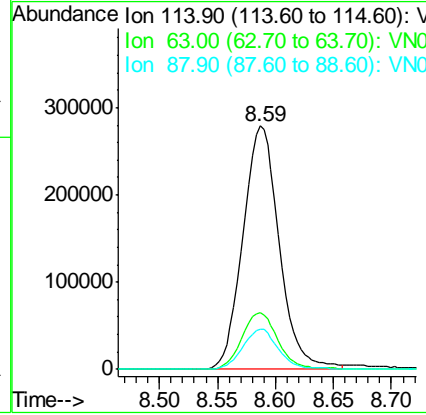
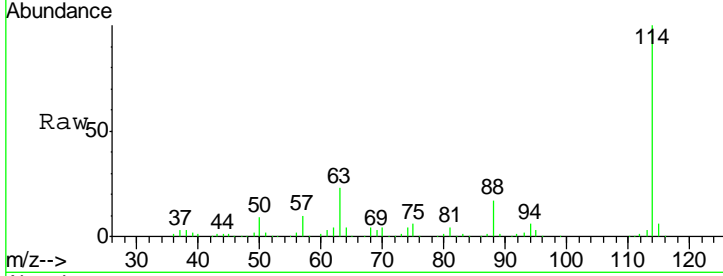




#34
 1,4-Difluorobenzene
 Concen: 50.000 ug/l
 RT: 8.59 min Scan# 2119
 Delta R.T. 0.00 min
 Lab File: VN055311.D
 Acq: 30 Apr 2019 16:27

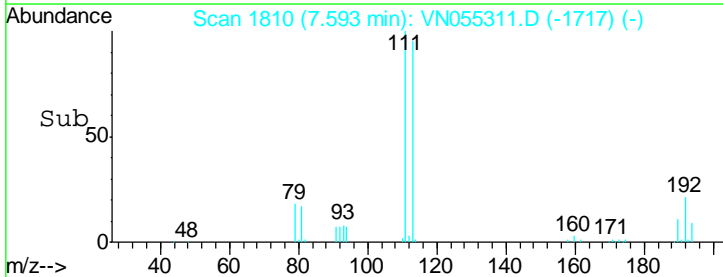
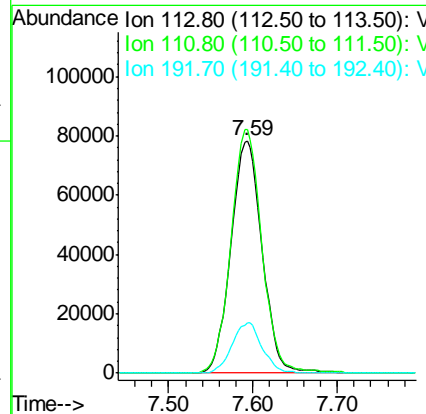
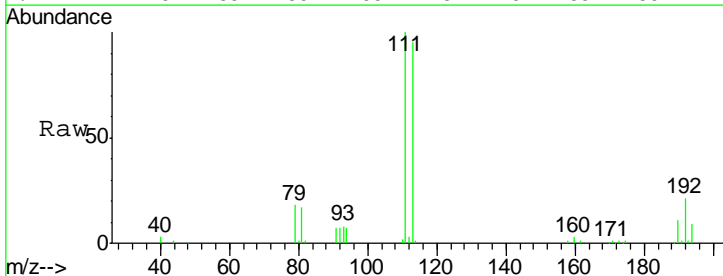
Instrument : MSVOA_N
 ClientSampled : JC-03-042919-H

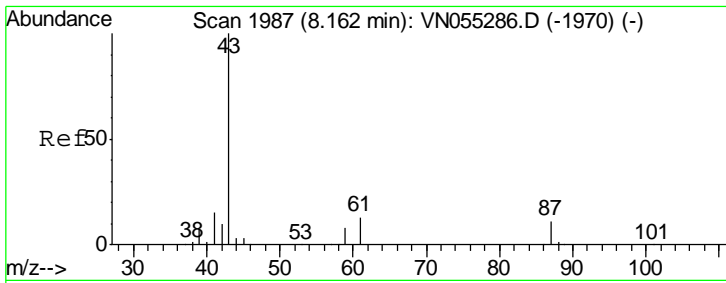
Tgt Ion	Resp	Lower	Upper
114	609243		
63	23.1	0.0	45.2
88	16.6	0.0	31.6



#35
 Dibromofluoromethane
 Concen: 50.409 ug/l
 RT: 7.59 min Scan# 1810
 Delta R.T. 0.00 min
 Lab File: VN055311.D
 Acq: 30 Apr 2019 16:27

Tgt Ion	Resp	Lower	Upper
113	201579		
111	103.6	82.3	123.5
192	21.0	17.0	25.6

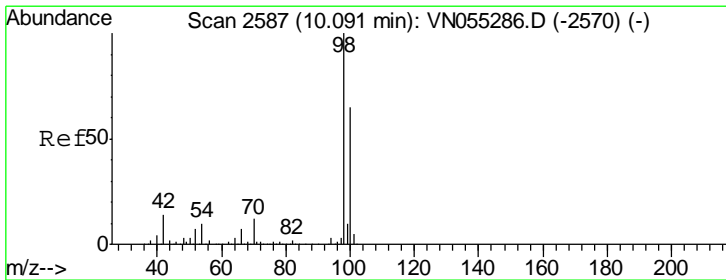
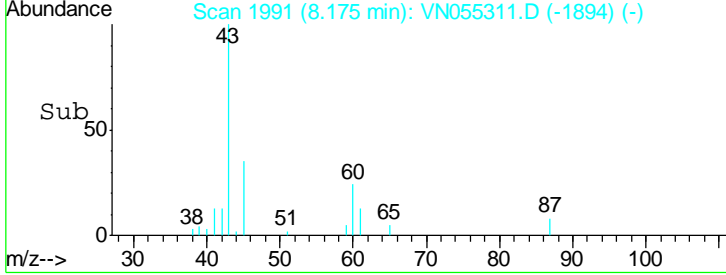
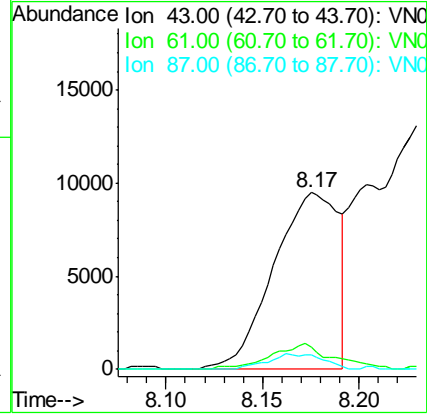
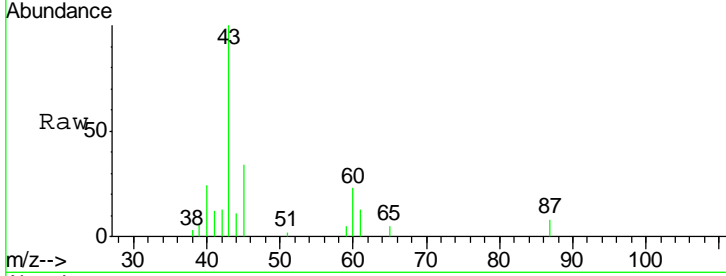




#43
 Isopropyl Acetate
 Concen: 3.096 ug/l
 RT: 8.17 min Scan# 1991
 Delta R.T. 0.01 min
 Lab File: VN055311.D
 Acq: 30 Apr 2019 16:27

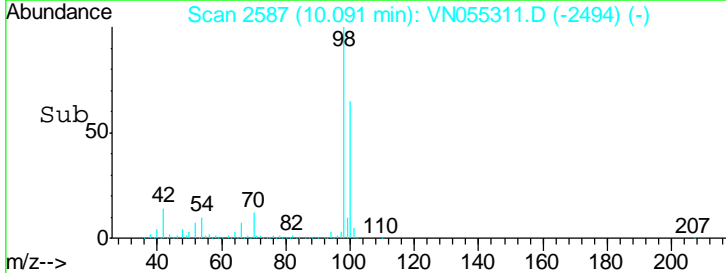
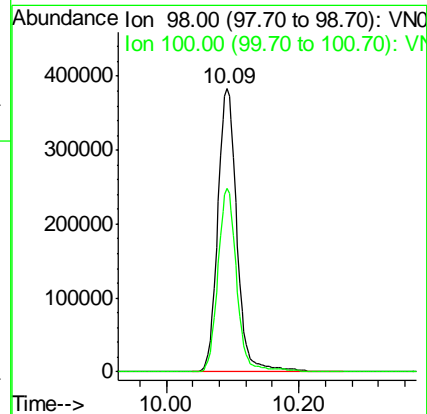
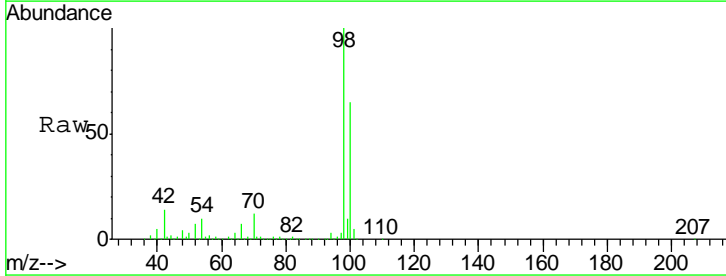
Instrument :
 MSVOA_N
 ClientSampled :
 JC-03-042919-H

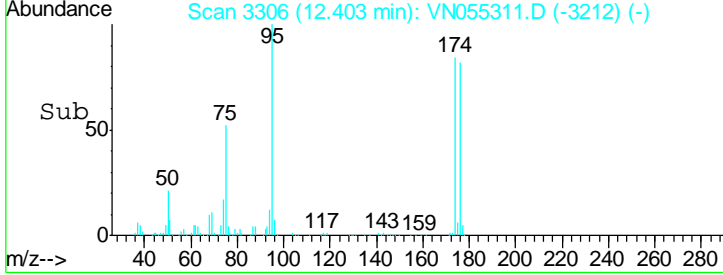
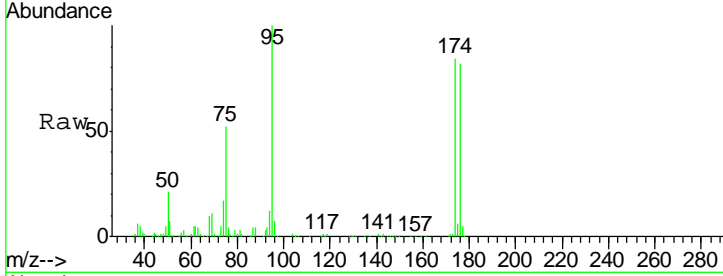
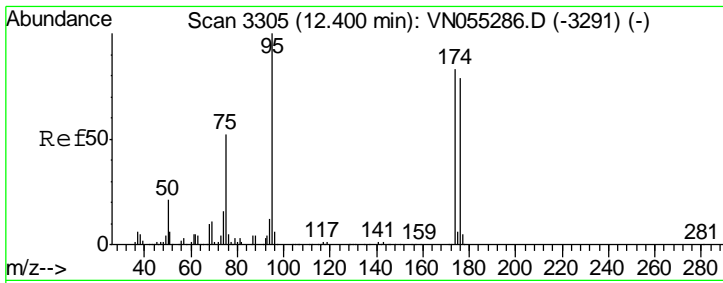
Tgt Ion	Resp	Lower	Upper
43	100		
61	13.9	20.8	31.2#
87	7.4	8.5	12.7#



#50
 Toluene-d8
 Concen: 53.031 ug/l
 RT: 10.09 min Scan# 2587
 Delta R.T. 0.00 min
 Lab File: VN055311.D
 Acq: 30 Apr 2019 16:27

Tgt Ion	Resp	Lower	Upper
98	100		
100	63.9	51.7	77.5

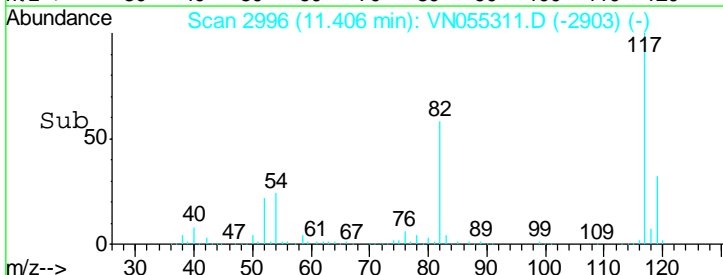
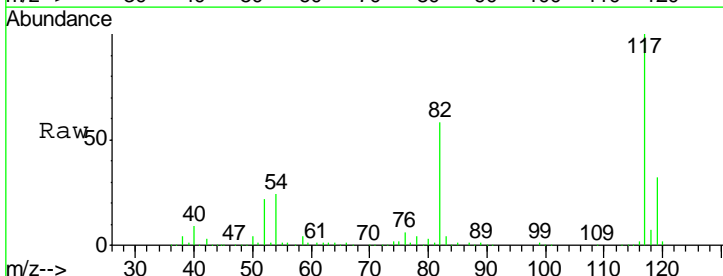
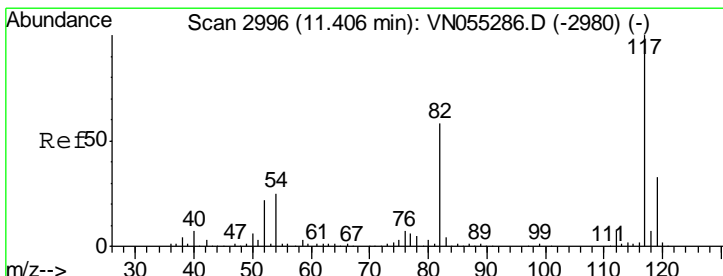
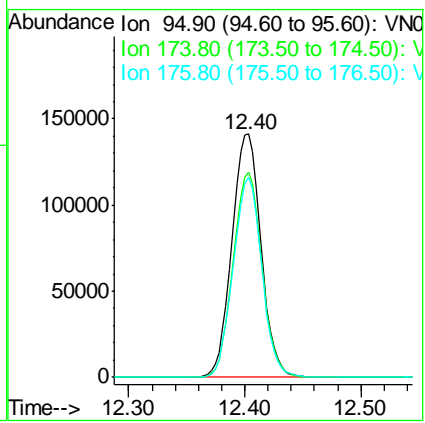




#62
 4-Bromofluorobenzene
 Concen: 54.024 ug/l
 RT: 12.40 min Scan# 3306
 Delta R.T. 0.00 min
 Lab File: VN055311.D
 Acq: 30 Apr 2019 16:27

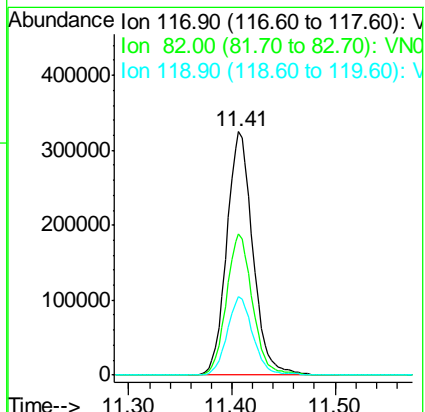
Instrument : MSVOA_N
 ClientSampled : JC-03-042919-H

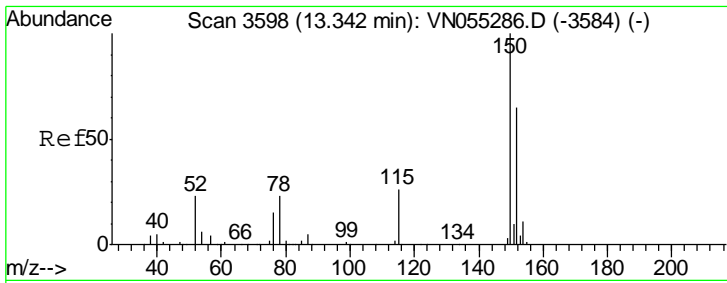
Tgt Ion	Resp	Lower	Upper
95	243800		
174	83.5	0.0	166.6
176	80.8	0.0	157.8



#63
 Chlorobenzene-d5
 Concen: 50.000 ug/l
 RT: 11.41 min Scan# 2996
 Delta R.T. 0.00 min
 Lab File: VN055311.D
 Acq: 30 Apr 2019 16:27

Tgt Ion	Resp	Lower	Upper
117	574439		
82	57.8	46.2	69.4
119	32.1	26.6	40.0





#72
 1,4-Dichlorobenzene-d4
 Concen: 50.000 ug/l
 RT: 13.34 min Scan# 3598
 Delta R.T. 0.00 min
 Lab File: VN055311.D
 Acq: 30 Apr 2019 16:27

Instrument :
 MSVOA_N
 ClientSampled :
 JC-03-042919-H

Tot Ion:152 Resp: 167167

Ion	Ratio	Lower	Upper
152	100		
115	58.5	29.0	87.0
150	159.7	0.0	345.6

