

Data Path : Z:\VOASRV\HPCHEM1\MSVOA N\DATA\VN050120\
 Data File : VN061235.D
 Acq On : 1 May 2020 17:04
 Operator : JC/MD
 Sample : L2456-03 50X
 Misc : 5.00mL/MSVOA N/WATER
 ALS Vial : 17 Sample Multiplier: 1

Instrument :
 MSVOA_N
 ClientSampleId :
 200

Integration Parameters: RTEINT.P
 Integrator: RTE
 Smoothing : ON Filtering: 5
 Sampling : 1 Min Area: 3 % of largest Peak
 Start Thrs: 0.2 Max Peaks: 100
 Stop Thrs : 0 Peak Location: TOP

If leading or trailing edge < 100 prefer < Baseline drop else tangent >
 Peak separation: 5

Method : Z:\VOASRV\HPCHEM1\MSVOA_N\METHODS\82N042720W.M
 Title : SW846 8260

Signal : TIC

peak #	R.T. min	first scan	max scan	last scan	PK TY	peak height	corr. area	corr. % max.	% of total
1	1.638	3	15	70	rBV	3743485	13887591	100.00%	79.382%
2	7.551	1836	1854	1865	rBV	77286	194684	1.40%	1.113%
3	7.625	1865	1877	1896	rVB	146546	343837	2.48%	1.965%
4	7.988	1974	1990	2014	rBV	102910	239129	1.72%	1.367%
5	8.551	2149	2165	2185	rBV	243903	500198	3.60%	2.859%
6	10.062	2615	2635	2653	rBV	381427	695723	5.01%	3.977%
7	11.381	3031	3045	3073	rVB	356998	622634	4.48%	3.559%
8	12.377	3342	3355	3377	rBV	267447	447022	3.22%	2.555%
9	13.319	3633	3648	3667	rBV	345019	563740	4.06%	3.222%

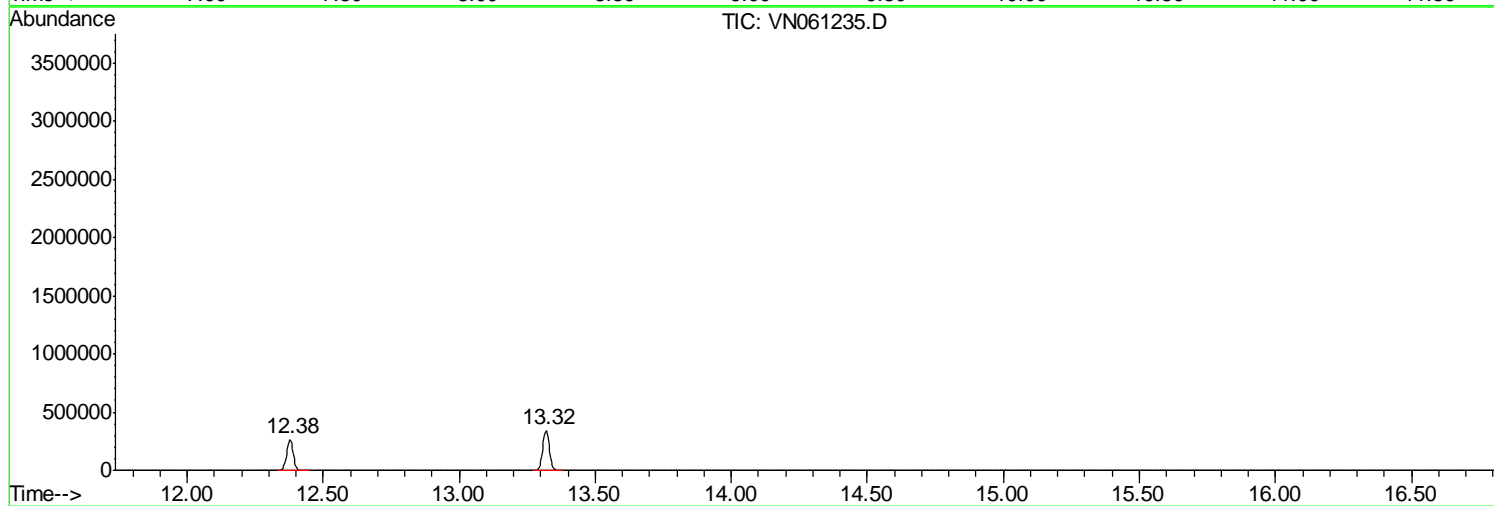
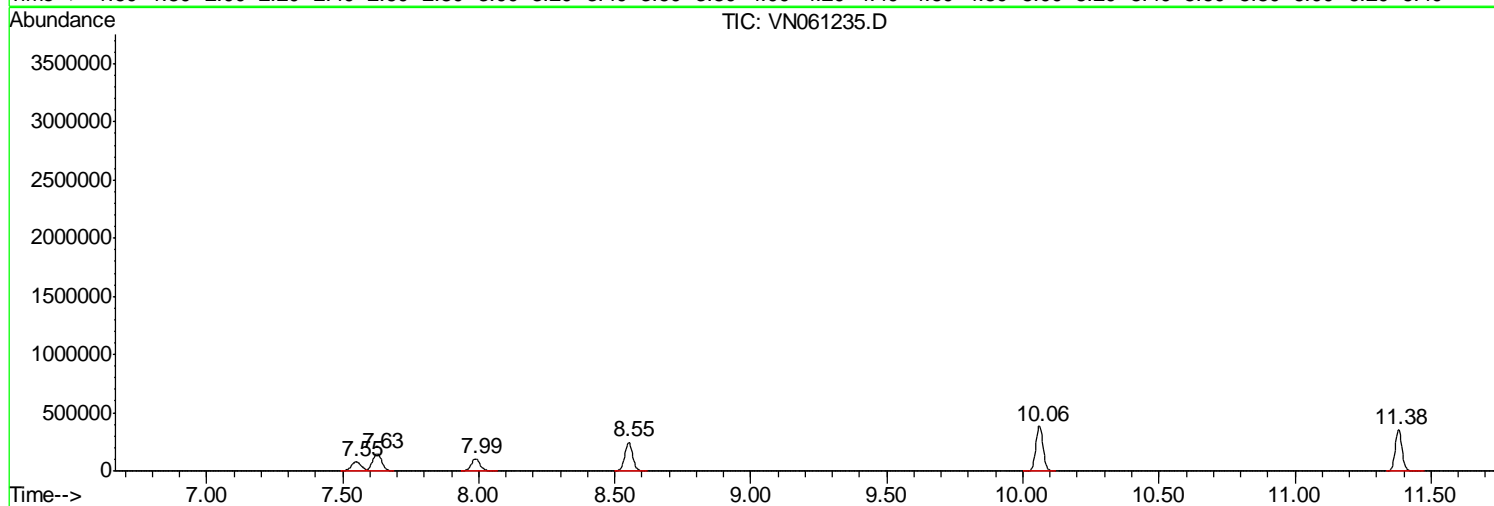
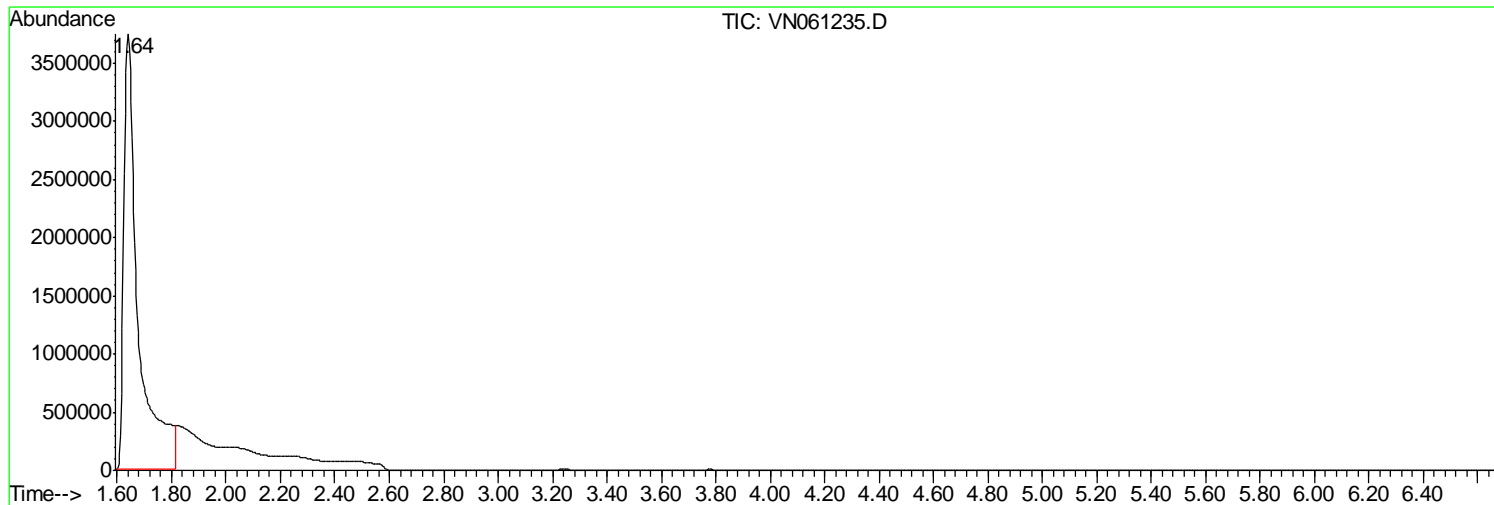
Sum of corrected areas: 17494558

Data Path : Z:\VOASRV\HPCHEM1\MSVOA N\DATA\VN050120\
Data File : VN061235.D
Acq On : 1 May 2020 17:04
Operator : JC/MD
Sample : L2456-03 50X
Misc : 5.00mL/MSVOA N/WATER
ALS Vial : 17 Sample Multiplier: 1

Instrument :
MSVOA_N
ClientSampled :
200

Quant Method : Z:\VOASRV\HPCHEM1\MSVOA_N\METHODS\82N042720W.M
Quant Title : SW846 8260

TIC Library : C:\DATABASE\NIST11.L
TIC Integration Parameters: LSCINT.P



Data Path : Z:\VOASRV\HPCHEM1\MSVOA_N\DATA\VN050120\
Data File : VN061235.D
Acq On : 1 May 2020 17:04
Operator : JC/MD
Sample : L2456-03 50X
Misc : 5.00mL/MSVOA_N/WATER
ALS Vial : 17 Sample Multiplier: 1

Instrument :
MSVOA_N
ClientSampleId :
200

Quant Method : Z:\VOASRV\HPCHEM1\MSVOA_N\METHODS\82N042720W.M
Quant Title : SW846 8260

TIC Library : C:\DATABASE\NIST11.L
TIC Integration Parameters: LSCINT.P

No Library Search Compounds Detected

Data Path : Z:\VOASRV\HPCHEM1\MSVOA_N\DATA\VN050120\
Data File : VN061235.D
Acq On : 1 May 2020 17:04
Operator : JC/MD
Sample : L2456-03 50X
Misc : 5.00mL/MSVOA_N/WATER
ALS Vial : 17 Sample Multiplier: 1

Instrument :
MSVOA_N
ClientSampleId :
200

Quant Method : Z:\VOASRV\HPCHEM1\MSVOA_N\METHODS\82N042720W.M
Quant Title : SW846 8260

TIC Library : C:\DATABASE\NIST11.L
TIC Integration Parameters: LSCINT.P

TIC Top Hit name	RT	EstConc	Units	Response	--Internal Standard--			
					#	RT	Resp	Conc
