

Data Path : Z:\voasrv\HPCHEM1\MSVOA_N\Data\VN050422\
 Data File : VN072320.D
 Acq On : 04 May 2022 11:42
 Operator : JC\MD
 Sample : VN0504WBL01
 Misc : 5.0mL/MSVOA_N/WATER
 ALS Vial : 4 Sample Multiplier: 1

Instrument :
 MSVOA_N
 ClientSampleId :
 VN0504WBL01

Integration Parameters: RTEINT.P

Integrator: RTE
 Smoothing : ON Filtering: 5
 Sampling : 1 Min Area: 3 % of largest Peak
 Start Thrs: 0.2 Max Peaks: 100
 Stop Thrs : 0 Peak Location: TOP

If leading or trailing edge < 100 prefer < Baseline drop else tangent >
 Peak separation: 5

Method : Z:\voasrv\HPCHEM1\MSVOA_N\methods\82N042622W.M
 Title : SW846 8260

Signal : TIC: VN072320.D\data.ms

peak #	R.T. min	first scan	max scan	last scan	PK TY	peak height	corr. area	corr. % max.	% of total
1	2.240	37	43	47	rBV3	21013	40913	2.77%	0.535%
2	2.752	123	130	137	rVB7	7920	19838	1.34%	0.260%
3	8.022	1016	1026	1031	rBV2	177945	445977	30.17%	5.837%
4	8.081	1031	1036	1048	rVB	305601	671089	45.39%	8.783%
5	8.434	1086	1096	1111	rBV	206097	475045	32.13%	6.217%
6	8.963	1176	1186	1201	rBV	508838	1023670	69.24%	13.397%
7	10.439	1428	1437	1457	rBV	819711	1478366	100.00%	19.348%
8	11.739	1651	1658	1671	rBV	802456	1414988	95.71%	18.518%
9	12.727	1819	1826	1840	rBV	579572	988504	66.86%	12.937%
10	13.668	1979	1986	2003	rVB	631268	1082618	73.23%	14.169%

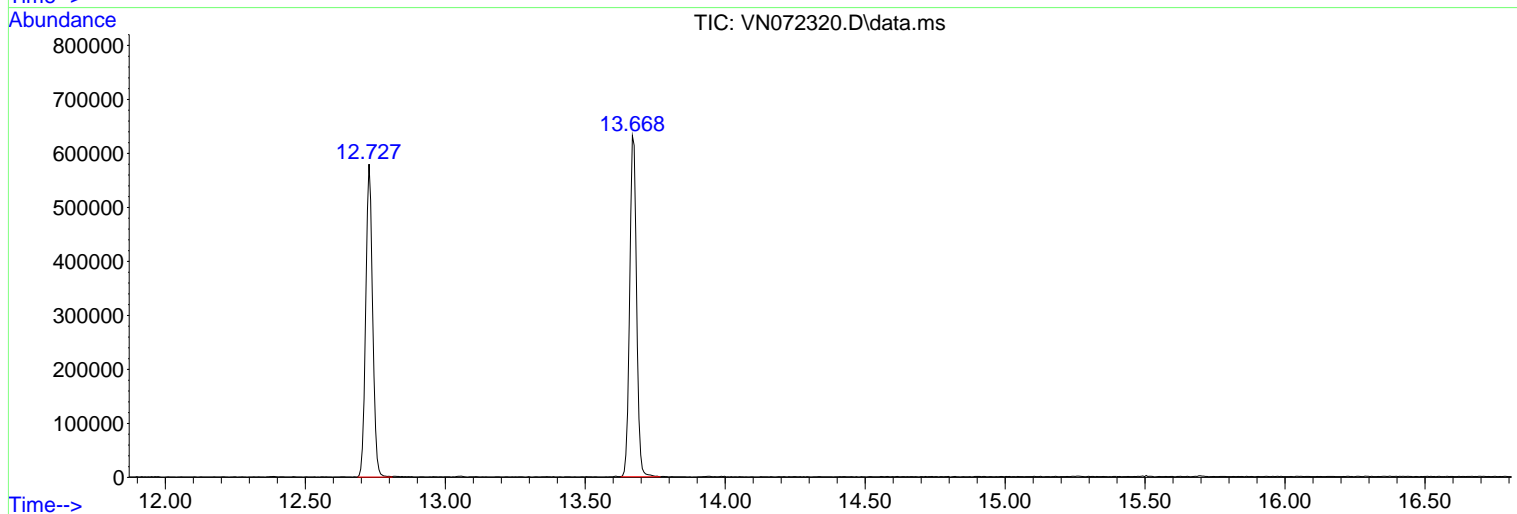
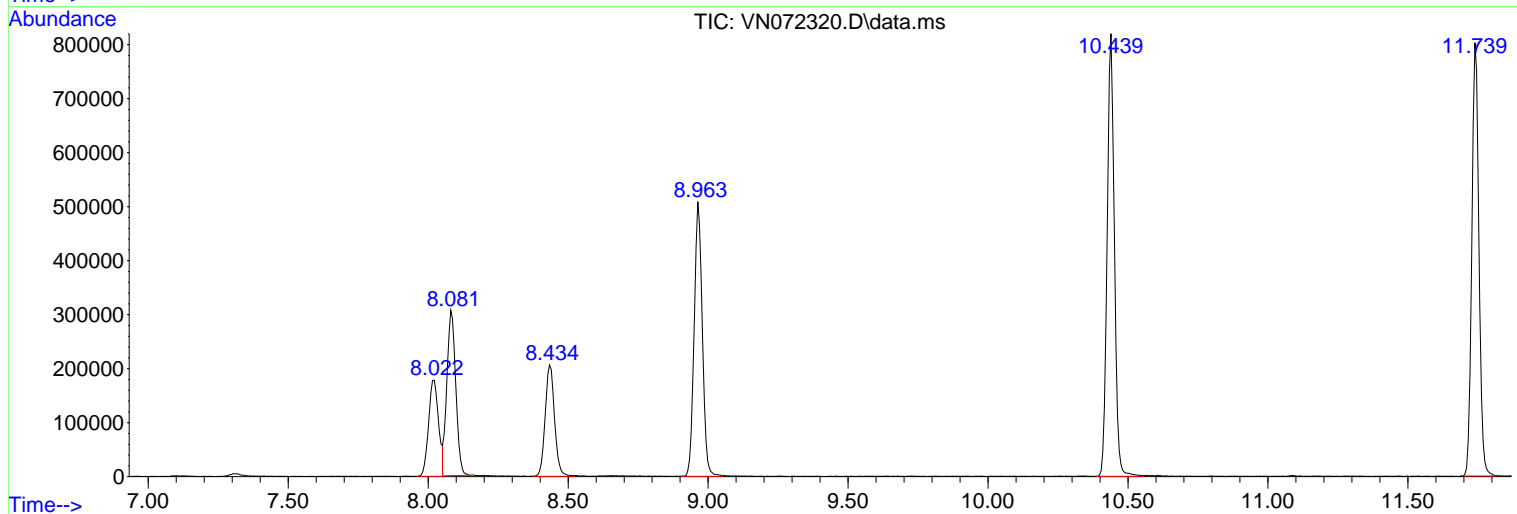
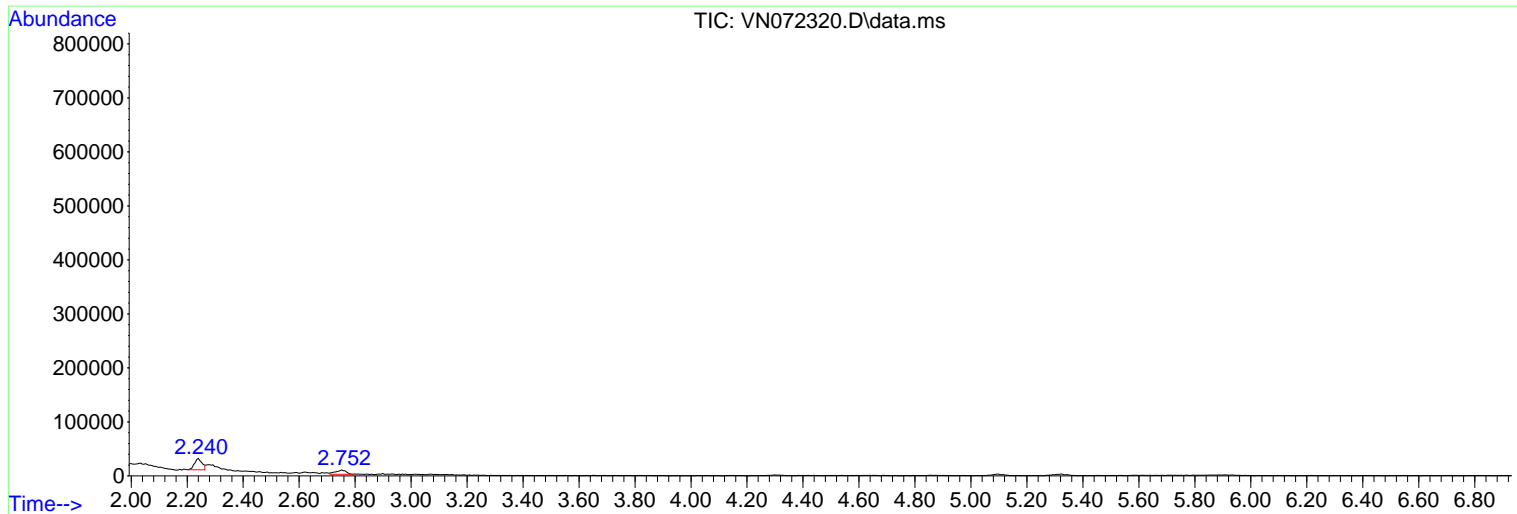
Sum of corrected areas: 7641008

Data Path : Z:\voasrv\HPCHEM1\MSVOA_N\Data\VN050422\
 Data File : VN072320.D
 Acq On : 04 May 2022 11:42
 Operator : JC\MD
 Sample : VN0504WBL01
 Misc : 5.0mL/MSVOA_N/WATER
 ALS Vial : 4 Sample Multiplier: 1

Instrument :
 MSVOA_N
 ClientSampleId :
 VN0504WBL01

Quant Method : Z:\voasrv\HPCHEM1\MSVOA_N\methods\82N042622W.M
 Quant Title : SW846 8260

TIC Library : C:\Database\NIST20.L
 TIC Integration Parameters: LSCINT.P



Library Search Compound Report

Data Path : Z:\voasrv\HPCHEM1\MSVOA_N\Data\VN050422\
Data File : VN072320.D
Acq On : 04 May 2022 11:42
Operator : JC\MD
Sample : VN0504WBL01
Misc : 5.0mL/MSVOA_N/WATER
ALS Vial : 4 Sample Multiplier: 1

Instrument :
MSVOA_N
ClientSampleId :
VN0504WBL01

Quant Method : Z:\voasrv\HPCHEM1\MSVOA_N\methods\82N042622W.M
Quant Title : SW846 8260

TIC Library : C:\Database\NIST20.L
TIC Integration Parameters: LSCINT.P

No Library Search Compounds Detected

Data Path : Z:\voasrv\HPCHEM1\MSVOA_N\Data\VN050422\
Data File : VN072320.D
Acq On : 04 May 2022 11:42
Operator : JC\MD
Sample : VN0504WBL01
Misc : 5.0mL/MSVOA_N/WATER
ALS Vial : 4 Sample Multiplier: 1

Instrument :
MSVOA_N
ClientSampleId :
VN0504WBL01

Quant Method : Z:\voasrv\HPCHEM1\MSVOA_N\methods\82N042622W.M
Quant Title : SW846 8260

TIC Library : C:\Database\NIST20.L
TIC Integration Parameters: LSCINT.P

TIC Top Hit name	RT	EstConc	Units	Response	#	RT	Resp	Conc
------------------	----	---------	-------	----------	---	----	------	------
