

Data Path : Z:\voasrv\HPCHEM1\MSVOA_N\Data\VN050624\
 Data File : VN082007.D
 Acq On : 06 May 2024 14:10
 Operator : JC\MD
 Sample : P2382-02
 Misc : 5.0mL/MSVOA_N/WATER
 ALS Vial : 9 Sample Multiplier: 1

Instrument :
 MSVOA_N
 ClientSampleId :
 002-35TH-AVE(MAY)

Quant Time: May 07 00:28:24 2024
 Quant Method : Z:\voasrv\HPCHEM1\MSVOA_N\methods\624N042624W.M
 Quant Title : METHOD 624 VOLATILE ORGANIC ANALYSIS
 QLast Update : Sat Apr 27 04:37:27 2024
 Response via : Initial Calibration

Compound	R.T.	QIon	Response	Conc	Units	Dev(Min)

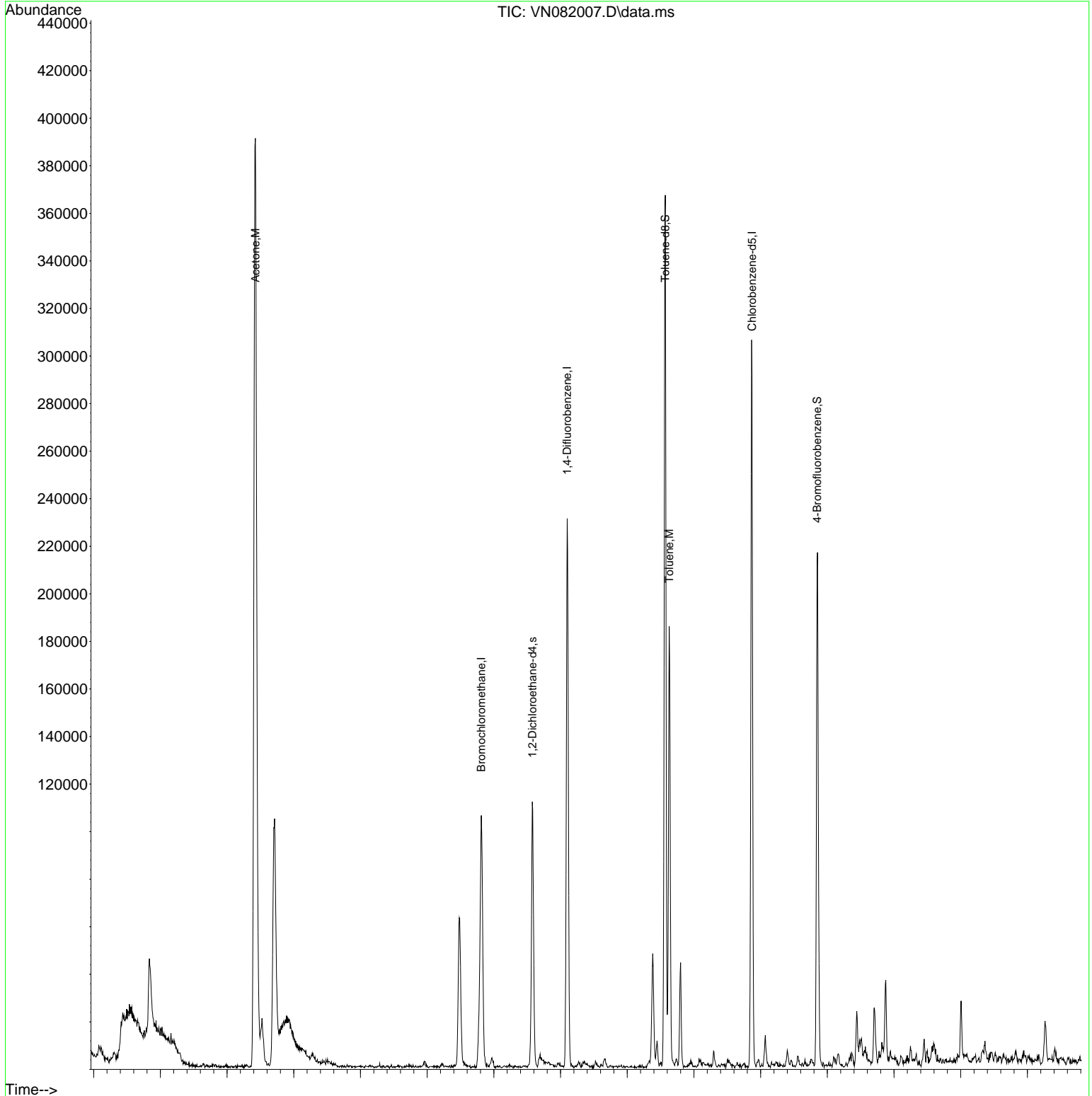
Internal Standards						
1) Bromochloromethane	7.812	128	32305	30.000	ug/l	0.00
28) 1,4-Difluorobenzene	9.100	114	194201	30.000	ug/l	0.00
57) Chlorobenzene-d5	11.871	117	170012	30.000	ug/l	0.00
System Monitoring Compounds						
27) 1,2-Dichloroethane-d4	8.577	65	83820	30.990	ug/l	0.00
Spiked Amount	30.000	Range 91 - 110	Recovery	=	103.300%	
60) 4-Bromofluorobenzene	12.847	95	78171	27.628	ug/l	0.00
Spiked Amount	30.000	Range 63 - 112	Recovery	=	92.100%	
63) Toluene-d8	10.571	98	244812	30.321	ug/l	0.00
Spiked Amount	30.000	Range 91 - 112	Recovery	=	101.067%	
Target Compounds						
						Qvalue
15) Acetone	4.424	58	238273	943.708	ug/l	90
25) Chloroform	7.965	83	3216	0.824	ug/l #	69
30) 2-Butanone	7.483	43	101265	67.948	ug/l	95
58) 4-Methyl-2-Pentanone	10.447	43	7265	2.201	ug/l #	77
62) Toluene	10.629	91	135594	14.175	ug/l	97
67) m/p-Xylenes	12.070	106	3091	0.795	ug/l	91
68) o-Xylene	12.388	106	1393	0.362	ug/l	68

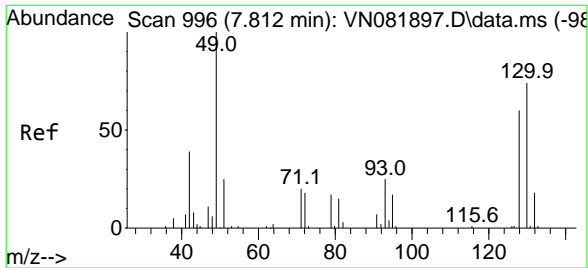
(#) = qualifier out of range (m) = manual integration (+) = signals summed

Data Path : Z:\voasrv\HPCHEM1\MSVOA_N\Data\VN050624\
 Data File : VN082007.D
 Acq On : 06 May 2024 14:10
 Operator : JC\MD
 Sample : P2382-02
 Misc : 5.0mL/MSVOA_N/WATER
 ALS Vial : 9 Sample Multiplier: 1

Instrument :
 MSVOA_N
 ClientSampleId :
 002-35TH-AVE(MAY)

Quant Time: May 07 00:28:24 2024
 Quant Method : Z:\voasrv\HPCHEM1\MSVOA_N\methods\624N042624W.M
 Quant Title : METHOD 624 VOLATILE ORGANIC ANALYSIS
 QLast Update : Sat Apr 27 04:37:27 2024
 Response via : Initial Calibration

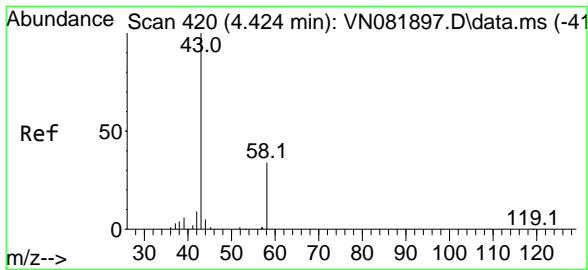
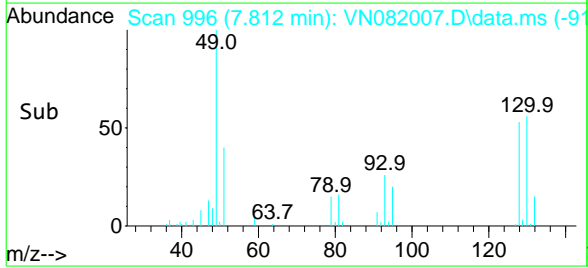
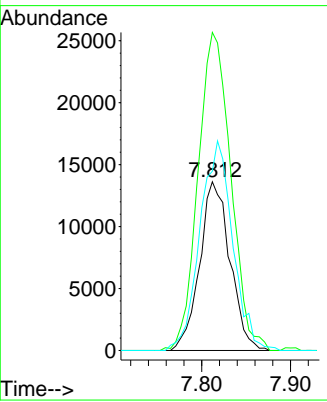
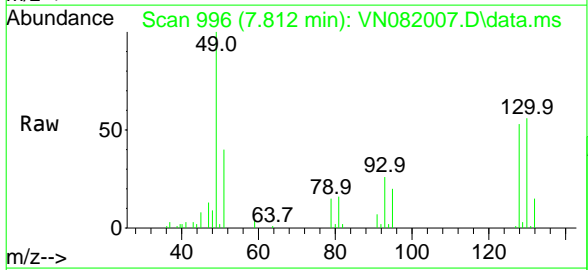




#1
 Bromochloromethane
 Concen: 30.000 ug/l
 RT: 7.812 min Scan# 996
 Delta R.T. -0.000 min
 Lab File: VN082007.D
 Acq: 06 May 2024 14:10

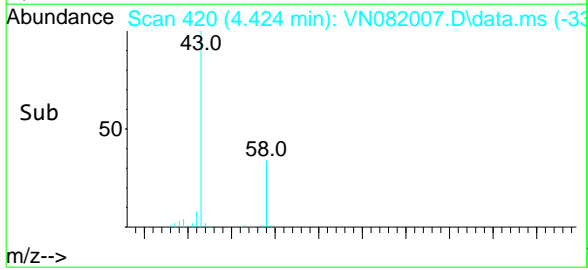
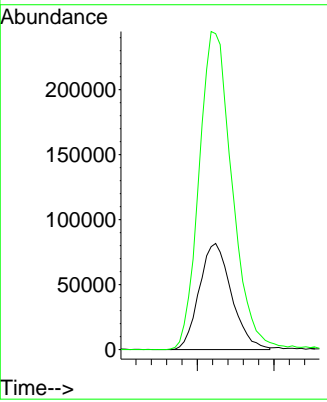
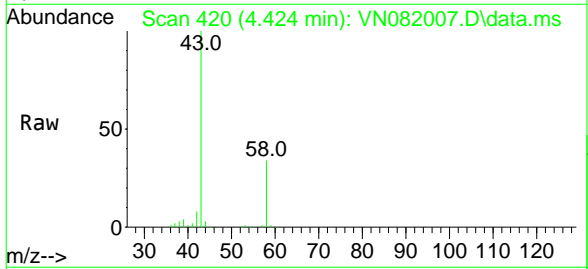
Instrument : MSVOA_N
 ClientSampleId : 002-35TH-AVE(MAY)

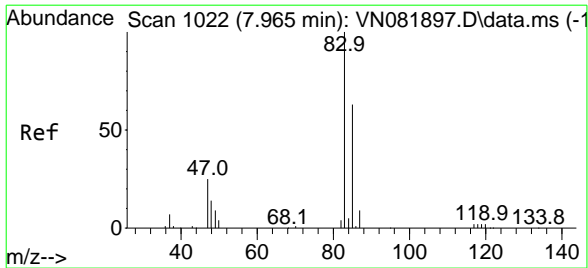
Tgt Ion	Resp	Lower	Upper
128	100		
49	203.6	0.0	403.7
130	134.0	0.0	323.3



#15
 Acetone
 Concen: 943.708 ug/l
 RT: 4.424 min Scan# 420
 Delta R.T. -0.000 min
 Lab File: VN082007.D
 Acq: 06 May 2024 14:10

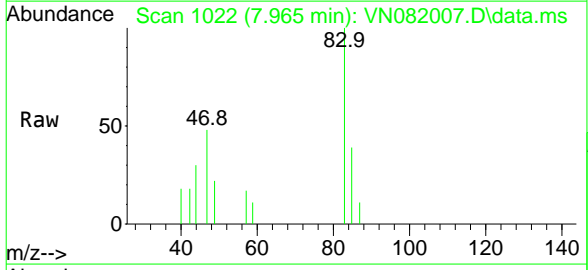
Tgt Ion	Resp	Lower	Upper
58	100		
43	297.0	223.1	334.7



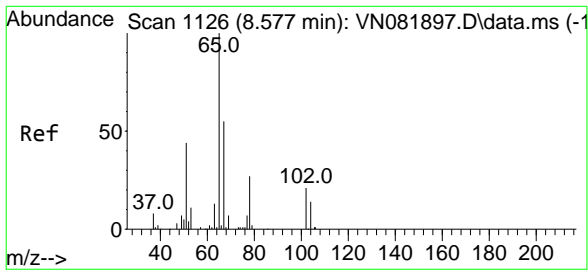
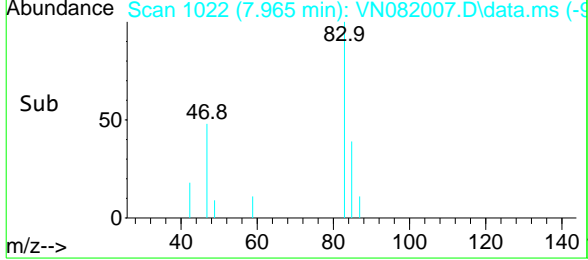
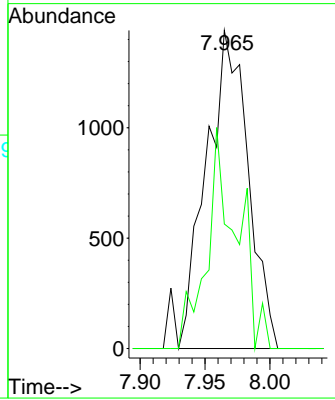


#25
 Chloroform
 Concen: 0.824 ug/l
 RT: 7.965 min Scan# 1022
 Delta R.T. -0.000 min
 Lab File: VN082007.D
 Acq: 06 May 2024 14:10

Instrument : MSVOA_N
 ClientSampleId : 002-35TH-AVE(MAY)

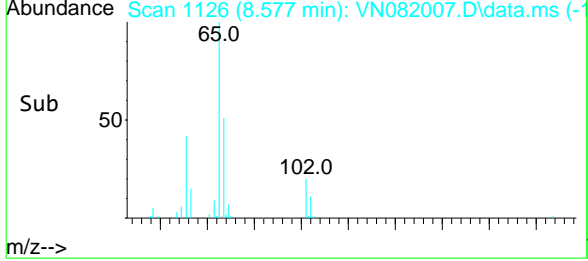
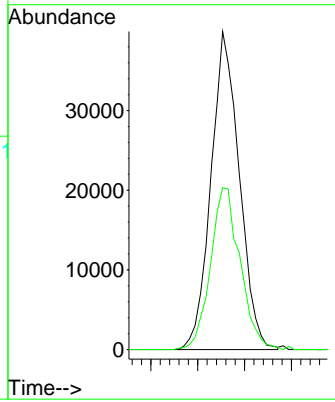
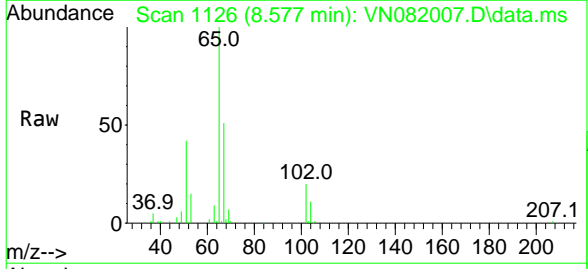


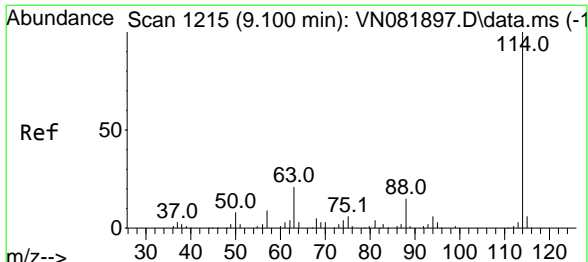
Tgt Ion: 83 Resp: 3216
 Ion Ratio Lower Upper
 83 100
 85 39.1 50.9 76.3#



#27
 1,2-Dichloroethane-d4
 Concen: 30.990 ug/l
 RT: 8.577 min Scan# 1126
 Delta R.T. -0.000 min
 Lab File: VN082007.D
 Acq: 06 May 2024 14:10

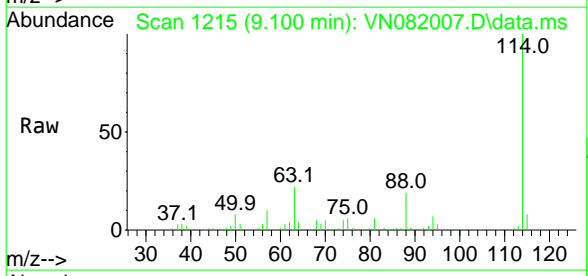
Tgt Ion: 65 Resp: 83820
 Ion Ratio Lower Upper
 65 100
 67 53.2 43.2 64.8





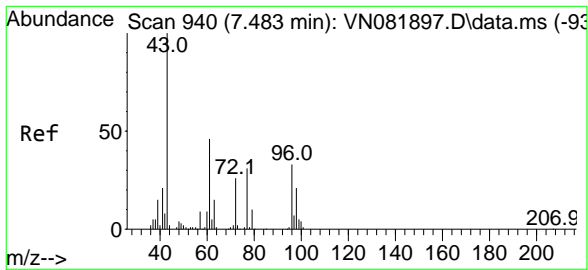
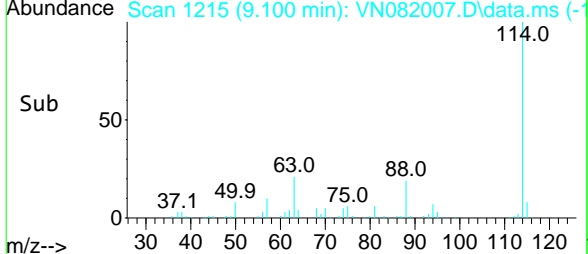
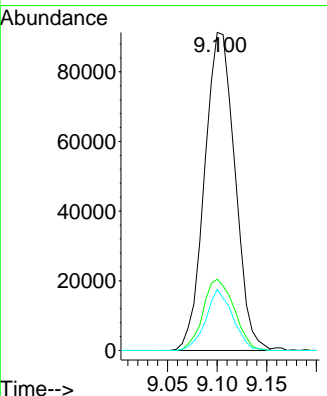
#28
 1,4-Difluorobenzene
 Concen: 30.000 ug/l
 RT: 9.100 min Scan# 12
 Delta R.T. -0.000 min
 Lab File: VN082007.D
 Acq: 06 May 2024 14:10

Instrument : MSVOA_N
 ClientSampleId : 002-35TH-AVE(MAY)



Tgt Ion: 114 Resp: 194201

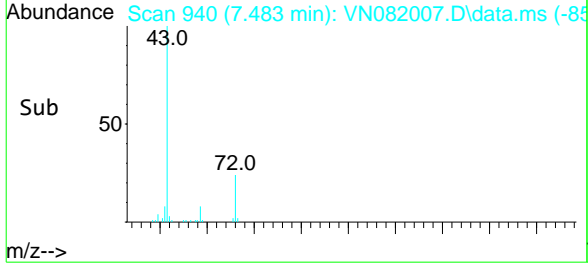
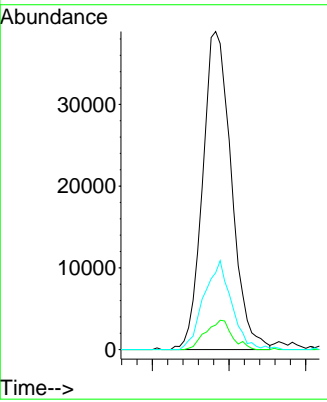
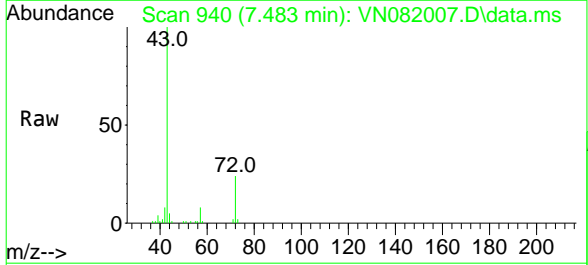
Ion	Ratio	Lower	Upper
114	100		
63	23.0	15.9	23.9
88	17.0	12.7	19.1

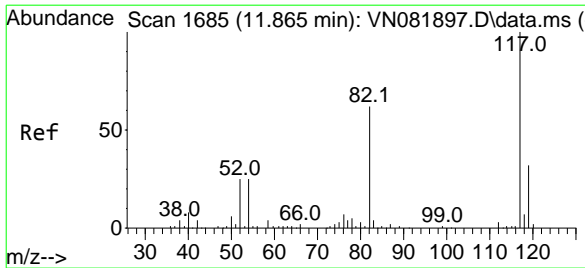


#30
 2-Butanone
 Concen: 67.948 ug/l
 RT: 7.483 min Scan# 940
 Delta R.T. -0.000 min
 Lab File: VN082007.D
 Acq: 06 May 2024 14:10

Tgt Ion: 43 Resp: 101265

Ion	Ratio	Lower	Upper
43	100		
57	8.5	6.7	10.1
72	26.8	24.0	36.0

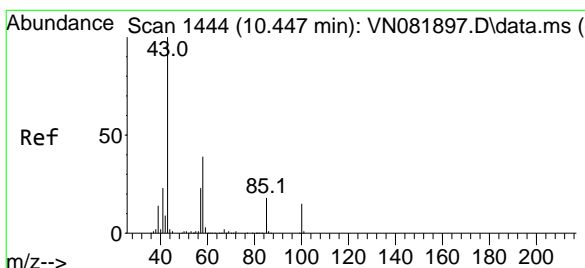
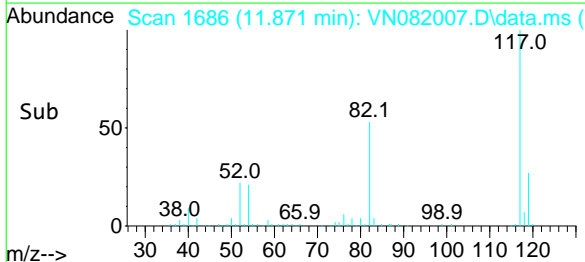
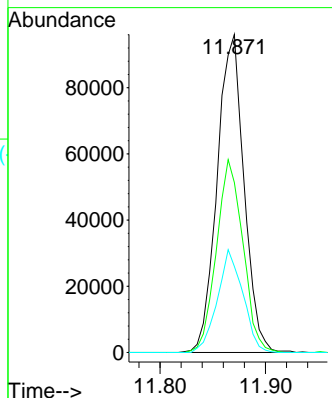
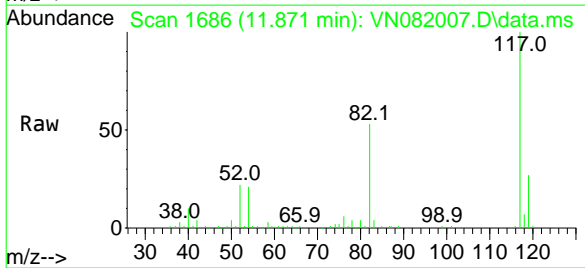




#57
 Chlorobenzene-d5
 Concen: 30.000 ug/l
 RT: 11.871 min Scan# 1685
 Delta R.T. 0.006 min
 Lab File: VN082007.D
 Acq: 06 May 2024 14:10

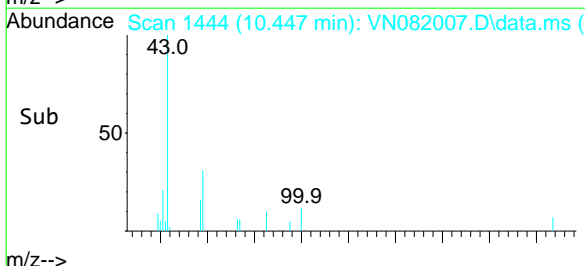
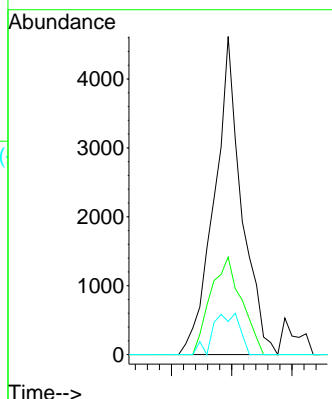
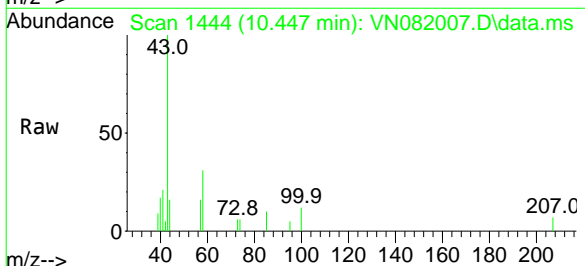
Instrument : MSVOA_N
 ClientSampleId : 002-35TH-AVE(MAY)

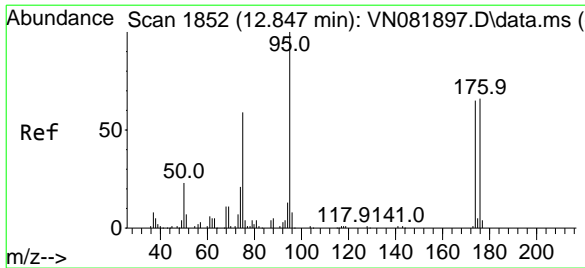
Tgt Ion	Resp	Lower	Upper
117	170012		
82	59.8	46.6	69.8
119	30.7	25.4	38.2



#58
 4-Methyl-2-Pentanone
 Concen: 2.201 ug/l
 RT: 10.447 min Scan# 1444
 Delta R.T. -0.000 min
 Lab File: VN082007.D
 Acq: 06 May 2024 14:10

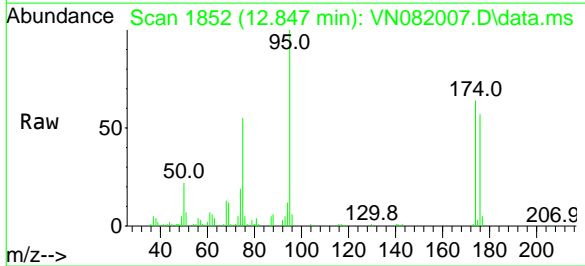
Tgt Ion	Resp	Lower	Upper
43	7265		
58	34.8	36.5	54.7#
85	7.4	19.5	29.3#



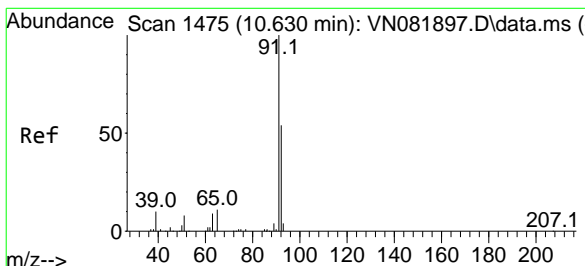
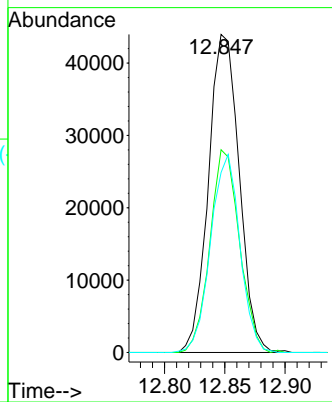
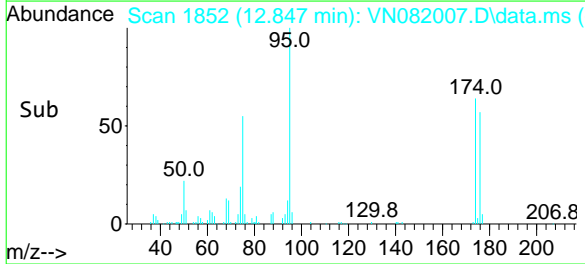


#60
 4-Bromofluorobenzene
 Concen: 27.628 ug/l
 RT: 12.847 min Scan# 18
 Delta R.T. -0.000 min
 Lab File: VN082007.D
 Acq: 06 May 2024 14:10

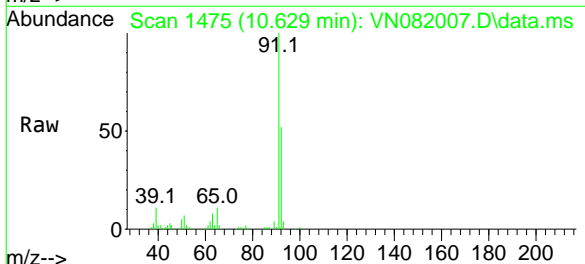
Instrument :
 MSVOA_N
 ClientSampleId :
 002-35TH-AVE(MAY)



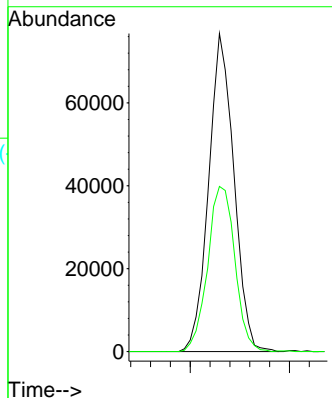
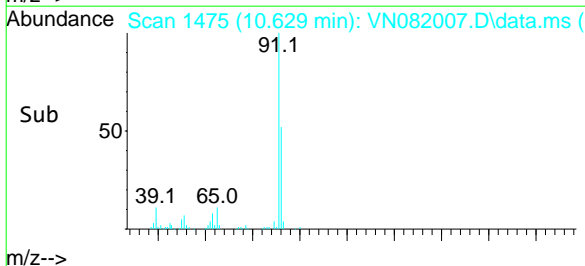
Tgt Ion: 95 Resp: 78171
 Ion Ratio Lower Upper
 95 100
 174 61.2 60.5 90.7
 176 59.1 57.8 86.6

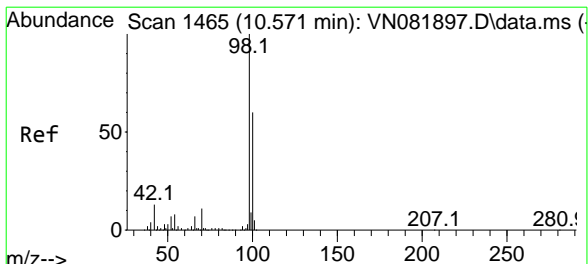


#62
 Toluene
 Concen: 14.175 ug/l
 RT: 10.629 min Scan# 1475
 Delta R.T. -0.000 min
 Lab File: VN082007.D
 Acq: 06 May 2024 14:10



Tgt Ion: 91 Resp: 135594
 Ion Ratio Lower Upper
 91 100
 92 56.0 46.5 69.7

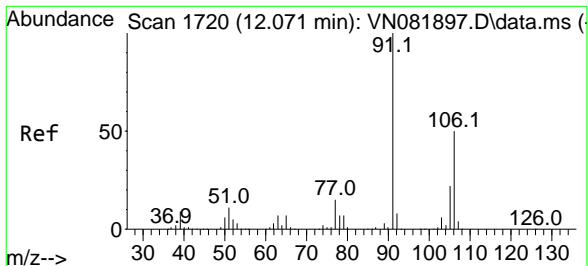
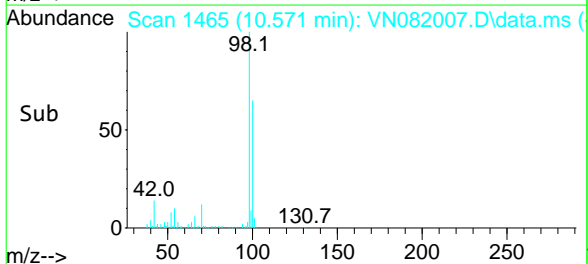
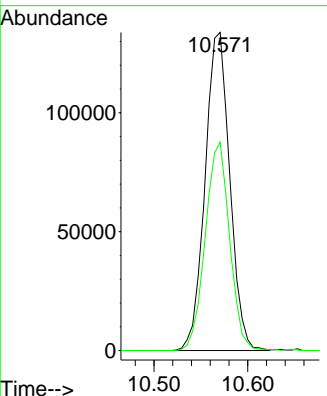
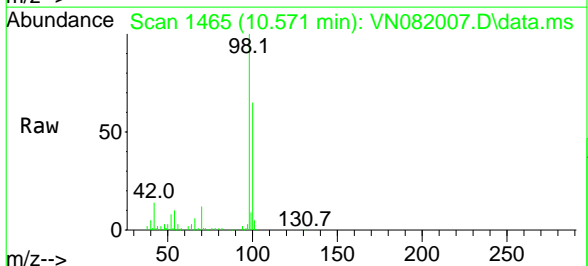




#63
 Toluene-d8
 Concen: 30.321 ug/l
 RT: 10.571 min Scan# 14
 Delta R.T. -0.000 min
 Lab File: VN082007.D
 Acq: 06 May 2024 14:10

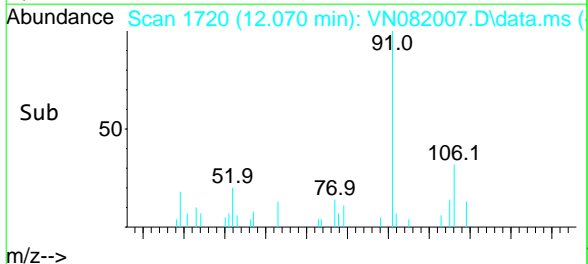
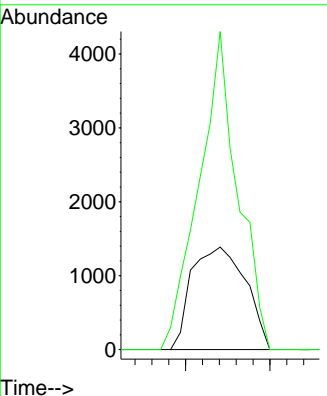
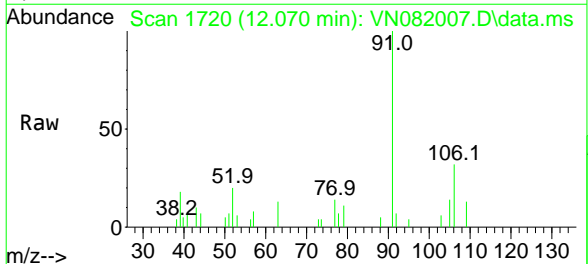
Instrument : MSVOA_N
 ClientSampleId : 002-35TH-AVE(MAY)

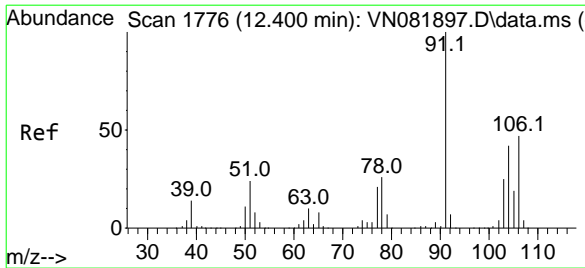
Tgt Ion: 98 Resp: 244812
 Ion Ratio Lower Upper
 98 100
 100 64.4 52.7 79.1



#67
 m/p-Xylenes
 Concen: 0.795 ug/l
 RT: 12.070 min Scan# 1720
 Delta R.T. -0.000 min
 Lab File: VN082007.D
 Acq: 06 May 2024 14:10

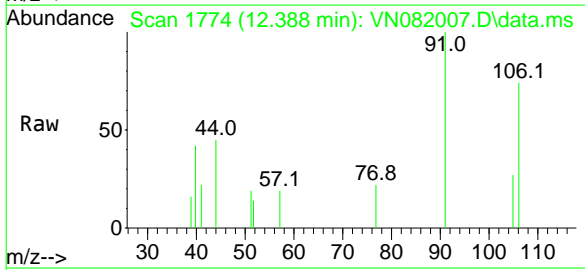
Tgt Ion:106 Resp: 3091
 Ion Ratio Lower Upper
 106 100
 91 222.6 166.6 249.8





#68
 o-Xylene
 Concen: 0.362 ug/l
 RT: 12.388 min Scan# 17
 Delta R.T. -0.012 min
 Lab File: VN082007.D
 Acq: 06 May 2024 14:10

Instrument :
 MSVOA_N
 ClientSampleId :
 002-35TH-AVE(MAY)



Tgt Ion:106 Resp: 1393
 Ion Ratio Lower Upper
 106 100
 91 271.0 110.0 330.0

