

Data Path : Z:\voasrv\HPCHEM1\MSVOA_N\Data\VN050721\
 Data File : VN067039.D
 Acq On : 7 May 2021 3:58
 Operator : JC/MD
 Sample : M2274-03 5X
 Misc : 5.00mL/MSVOA_N/WATER
 ALS Vial : 44 Sample Multiplier: 1

Instrument :
 MSVOA_N
 ClientSampled :
 14B-3

Quant Time: May 07 07:33:36 2021
 Quant Method : Z:\voasrv\HPCHEM1\MSVOA_N\methods\624N050721W.M
 Quant Title : METHOD 624 VOLATILE ORGANIC ANALYSIS
 QLast Update : Fri May 07 07:26:20 2021
 Response via : Initial Calibration

Compound	R.T.	QIon	Response	Conc	Units	Dev(Min)

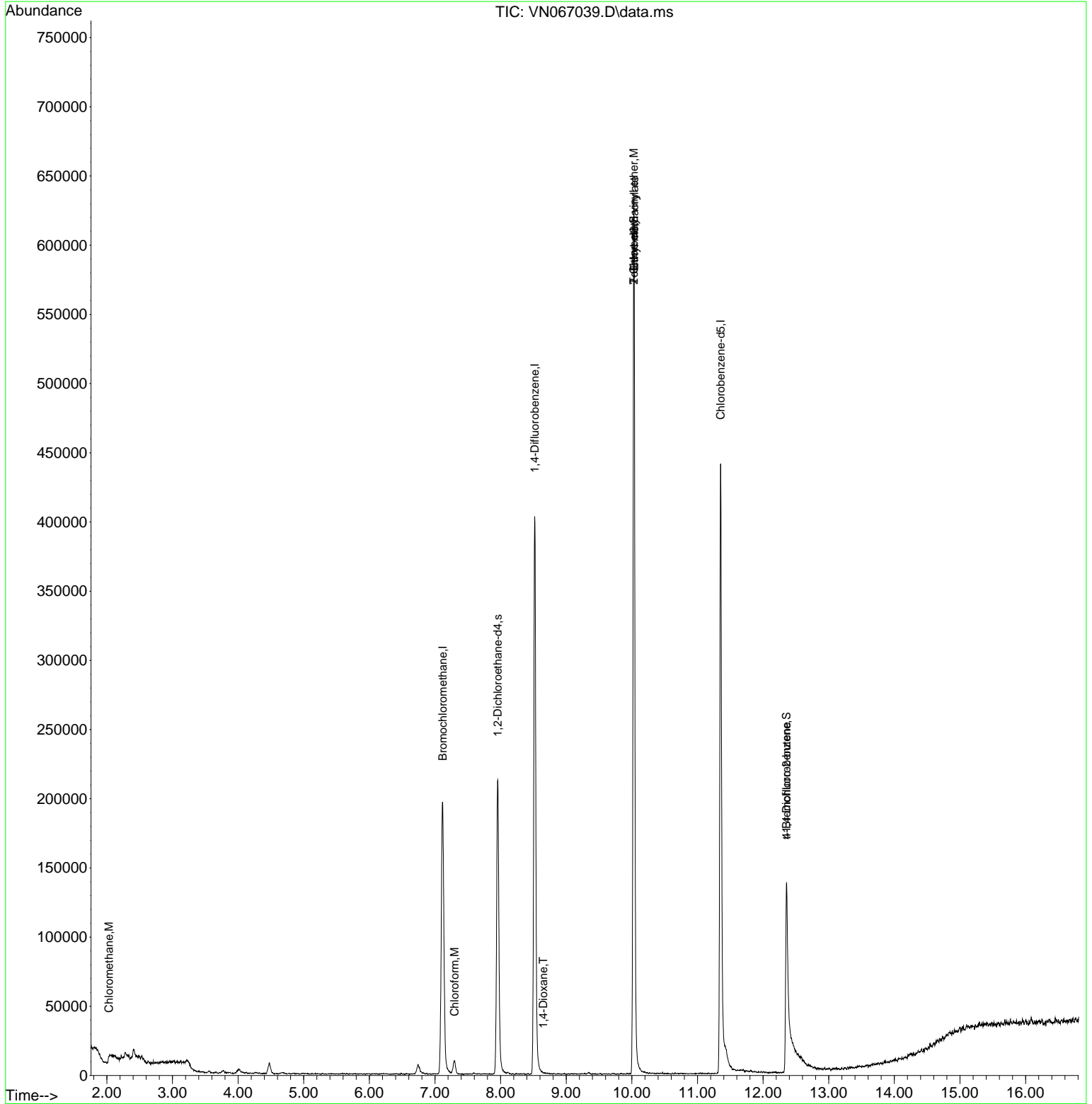
Internal Standards						
1) Bromochloromethane	7.117	128	74131	30.00	ug/l	0.00
28) 1,4-Difluorobenzene	8.520	114	349015	30.00	ug/l	0.00
57) Chlorobenzene-d5	11.352	117	277868	30.00	ug/l	0.00
System Monitoring Compounds						
27) 1,2-Dichloroethane-d4	7.957	65	192867	29.69	ug/l	0.00
Spiked Amount	30.000	Range	91 - 110	Recovery	=	98.97%
60) 4-Bromofluorobenzene	12.358	95	73180	15.83	ug/l	0.00
Spiked Amount	30.000	Range	63 - 112	Recovery	=	52.77%#
63) Toluene-d8	10.030	98	453069	32.92	ug/l	0.00
Spiked Amount	30.000	Range	91 - 112	Recovery	=	109.73%
Target Compounds						
						Qvalue
3) Chloromethane	2.032	50	1586	0.21	ug/l	94
25) Chloroform	7.297	83	10204	1.05	ug/l	94
45) 1,4-Dioxane	8.651	88	122	1.82	ug/l #	19
51) Ethyl methacrylate	10.038	69	1735	0.28	ug/l #	77
55) 2-Chloroethyl vinyl ether	10.030	63	399	0.34	ug/l #	1
77) t-1,4-Dichloro-2-butene	12.355	75	18289	15.72	ug/l #	16

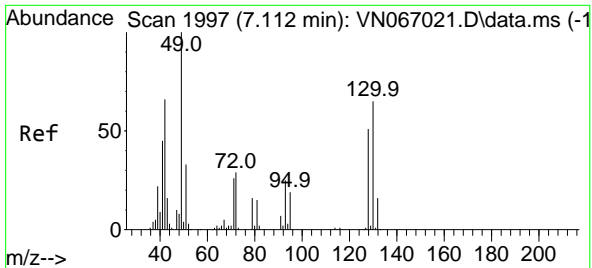
(#) = qualifier out of range (m) = manual integration (+) = signals summed

Data Path : Z:\voasrv\HPCHEM1\MSVOA_N\Data\VN050721\
 Data File : VN067039.D
 Acq On : 7 May 2021 3:58
 Operator : JC/MD
 Sample : M2274-03 5X
 Misc : 5.00mL/MSVOA_N/WATER
 ALS Vial : 44 Sample Multiplier: 1

Instrument :
 MSVOA_N
 ClientSampled :
 14B-3

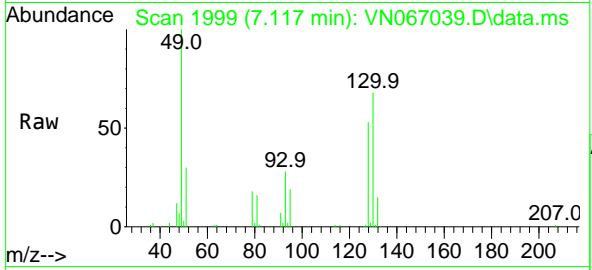
Quant Time: May 07 07:33:36 2021
 Quant Method : Z:\voasrv\HPCHEM1\MSVOA_N\methods\624N050721W.M
 Quant Title : METHOD 624 VOLATILE ORGANIC ANALYSIS
 QLast Update : Fri May 07 07:26:20 2021
 Response via : Initial Calibration





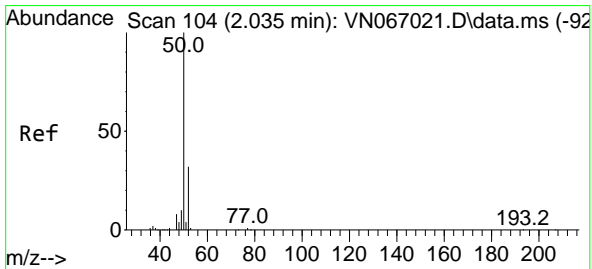
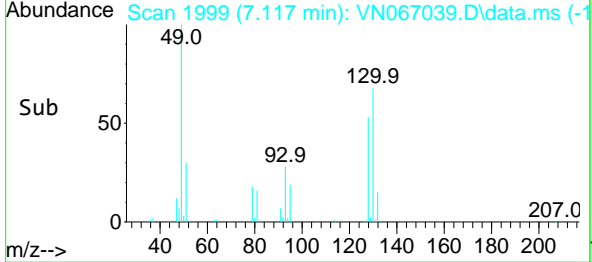
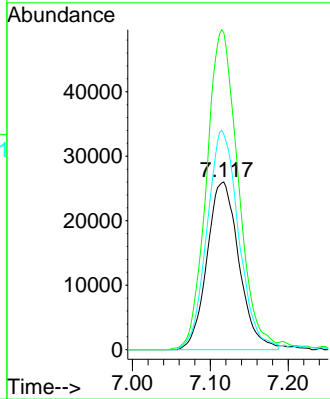
#1
 Bromochloromethane
 Concen: 30.00 ug/l
 RT: 7.117 min Scan# 1999
 Delta R.T. 0.005 min
 Lab File: VN067039.D
 Acq: 7 May 2021 3:58

Instrument :
 MSVOA_N
 ClientSampled :
 14B-3



Tgt Ion:128 Resp: 74131

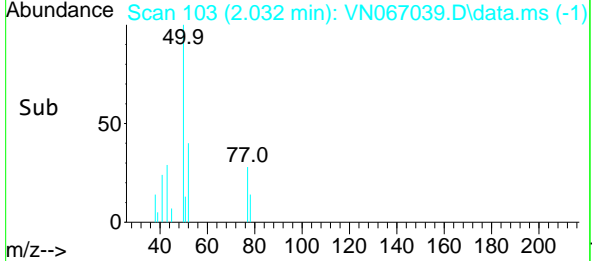
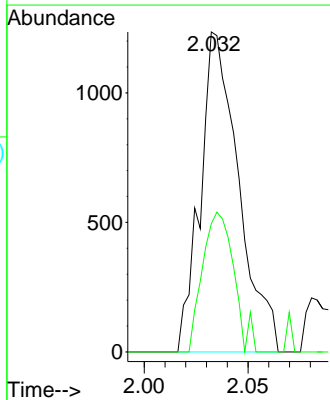
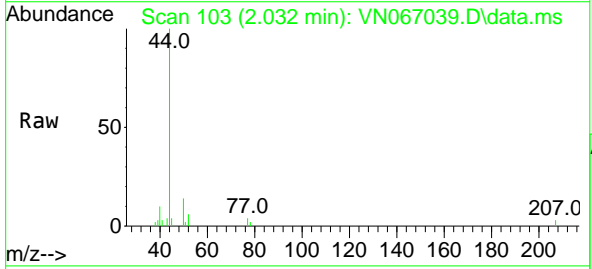
Ion	Ratio	Lower	Upper
128	100		
49	188.4	0.0	486.3
130	130.0	0.0	326.0

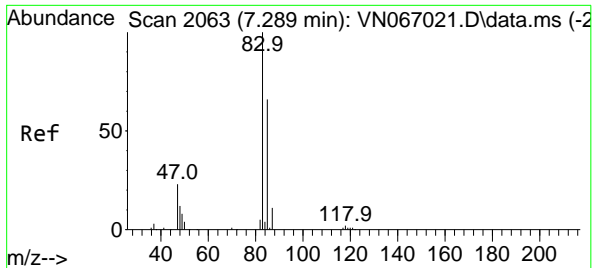


#3
 Chloromethane
 Concen: 0.21 ug/l
 RT: 2.032 min Scan# 103
 Delta R.T. -0.003 min
 Lab File: VN067039.D
 Acq: 7 May 2021 3:58

Tgt Ion: 50 Resp: 1586

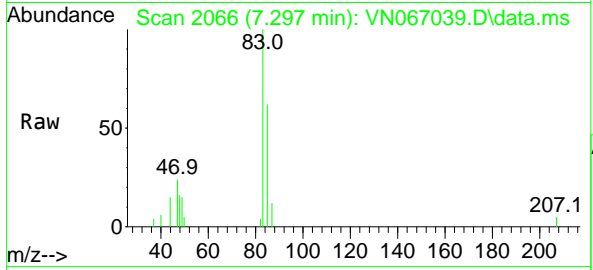
Ion	Ratio	Lower	Upper
50	100		
52	35.6	25.9	38.9



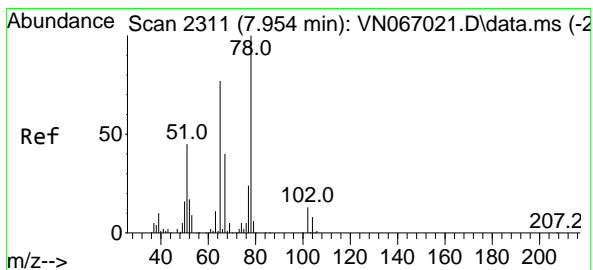
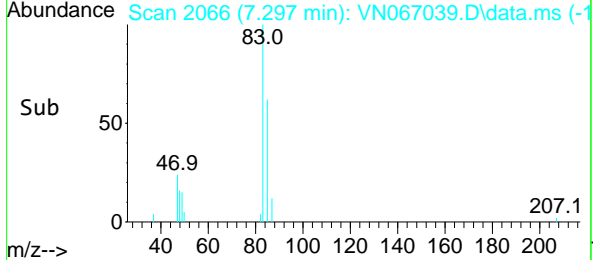
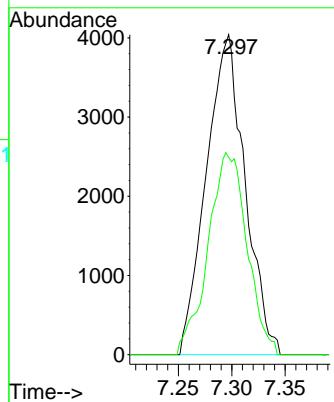


#25
 Chloroform
 Concen: 1.05 ug/l
 RT: 7.297 min Scan# 2066
 Delta R.T. 0.008 min
 Lab File: VN067039.D
 Acq: 7 May 2021 3:58

Instrument :
 MSVOA_N
ClientSampled :
 14B-3

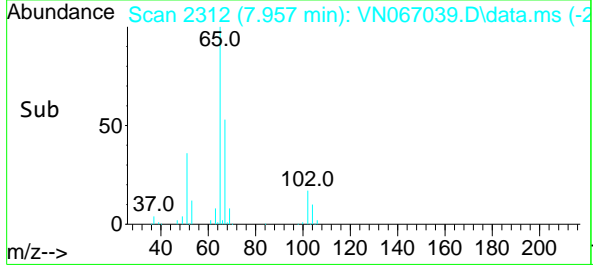
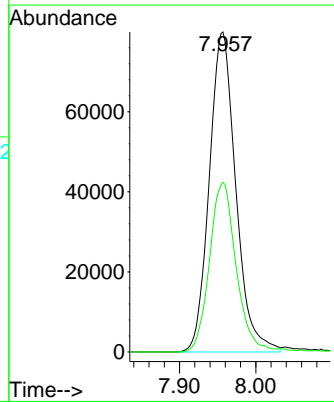
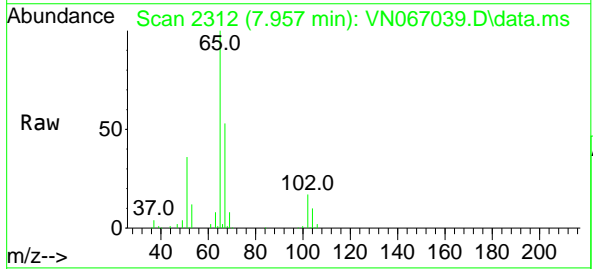


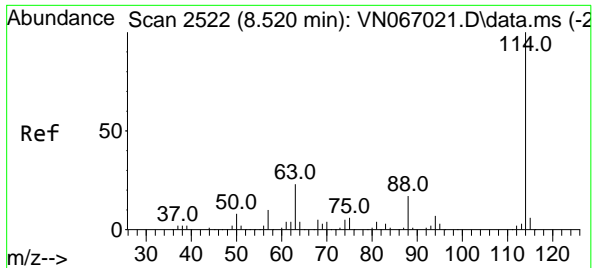
Tgt Ion: 83 Resp: 10204
 Ion Ratio Lower Upper
 83 100
 85 61.7 53.0 79.6



#27
 1,2-Dichloroethane-d4
 Concen: 29.69 ug/l
 RT: 7.957 min Scan# 2312
 Delta R.T. 0.003 min
 Lab File: VN067039.D
 Acq: 7 May 2021 3:58

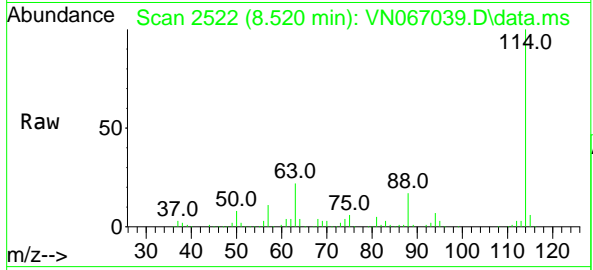
Tgt Ion: 65 Resp: 192867
 Ion Ratio Lower Upper
 65 100
 67 53.1 41.6 62.4





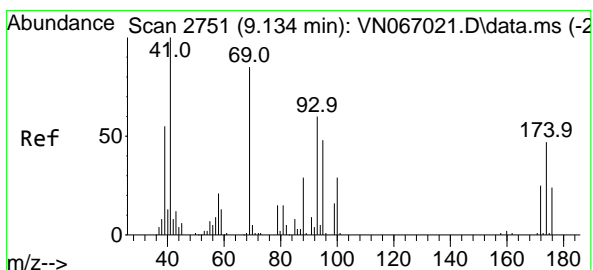
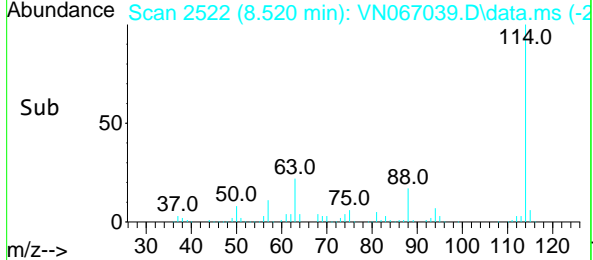
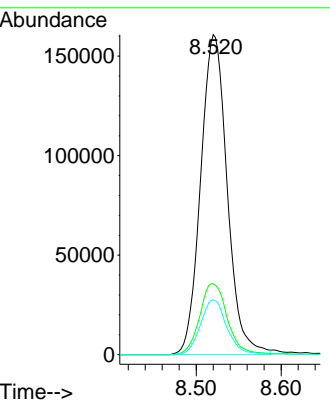
#28
 1,4-Difluorobenzene
 Concen: 30.00 ug/l
 RT: 8.520 min Scan# 2522
 Delta R.T. 0.000 min
 Lab File: VN067039.D
 Acq: 7 May 2021 3:58

Instrument :
 MSVOA_N
 ClientSampled :
 14B-3

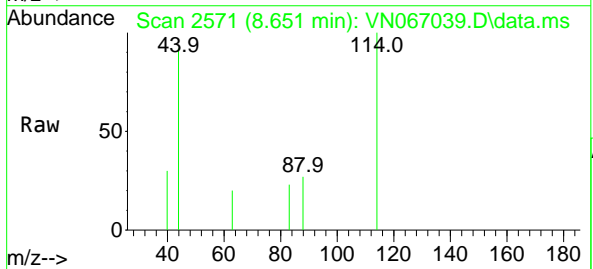


Tgt Ion:114 Resp: 349015

Ion	Ratio	Lower	Upper
114	100		
63	23.2	18.8	28.2
88	17.0	13.8	20.6

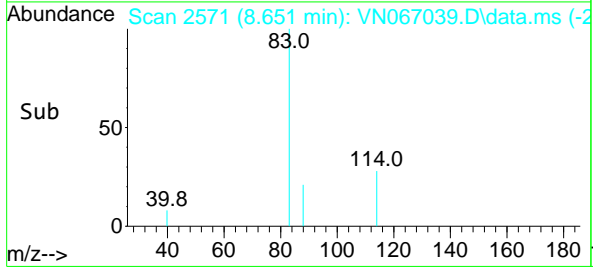
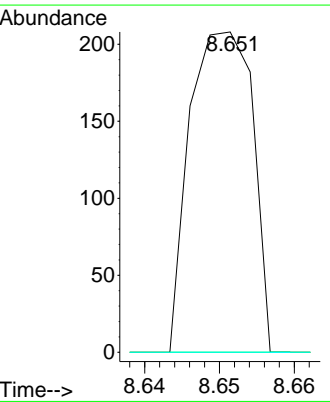


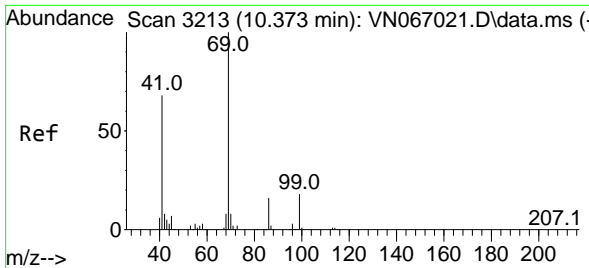
#45
 1,4-Dioxane
 Concen: 1.82 ug/l
 RT: 8.651 min Scan# 2571
 Delta R.T. -0.483 min
 Lab File: VN067039.D
 Acq: 7 May 2021 3:58



Tgt Ion: 88 Resp: 122

Ion	Ratio	Lower	Upper
88	100		
43	0.0	28.0	42.0#
58	0.0	62.8	94.2#

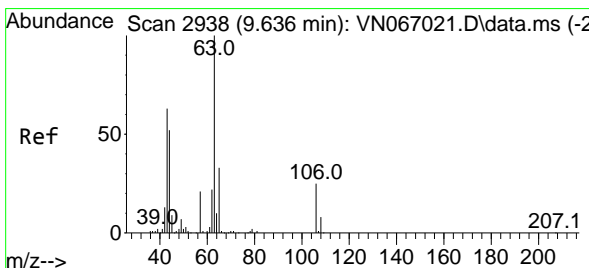
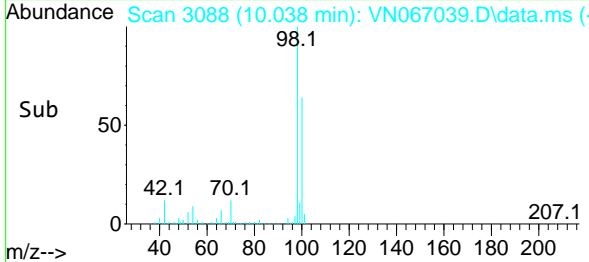
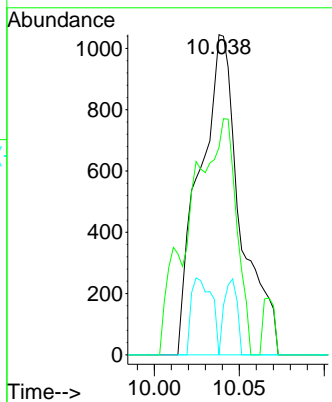
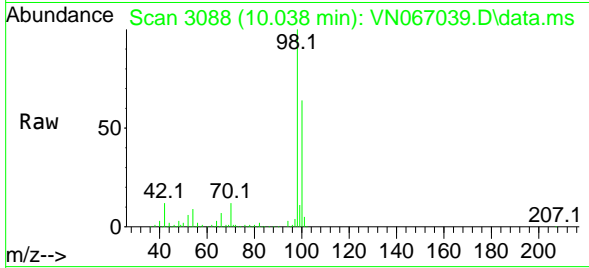




#51
 Ethyl methacrylate
 Concen: 0.28 ug/l
 RT: 10.038 min Scan# 3088
 Delta R.T. -0.335 min
 Lab File: VN067039.D
 Acq: 7 May 2021 3:58

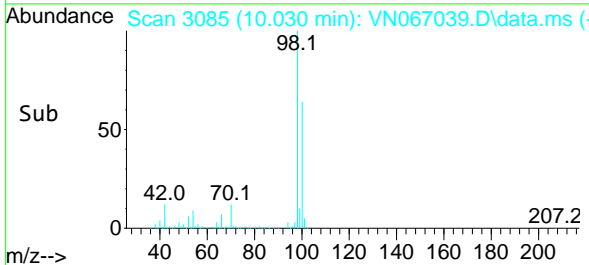
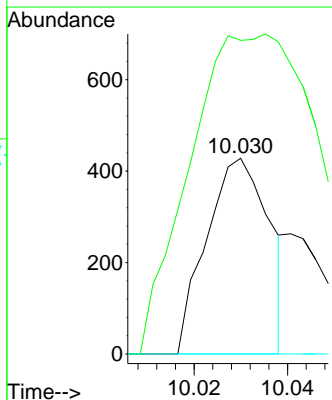
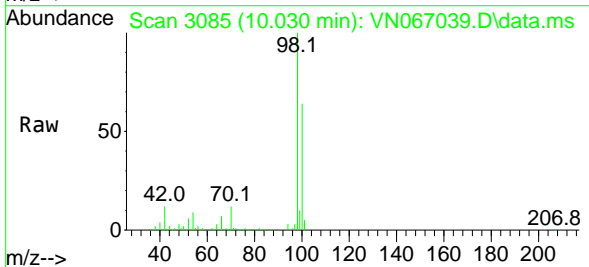
Instrument :
 MSVOA_N
 ClientSampled :
 14B-3

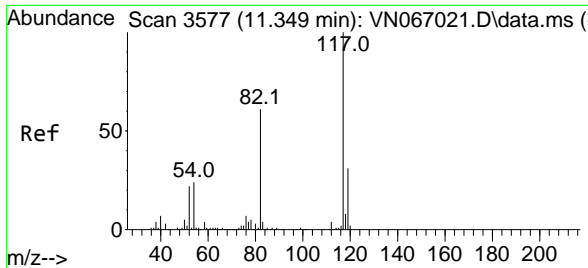
Tgt Ion	Resp	Lower	Upper
69	1735		
41	64.8	33.9	101.7
39	0.0	17.3	51.9#



#55
 2-Chloroethyl vinyl ether
 Concen: 0.34 ug/l
 RT: 10.030 min Scan# 3085
 Delta R.T. 0.394 min
 Lab File: VN067039.D
 Acq: 7 May 2021 3:58

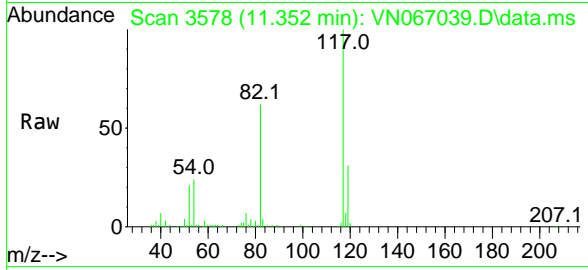
Tgt Ion	Resp	Lower	Upper
63	399		
65	147.6	25.4	38.2#
106	0.0	18.9	28.3#





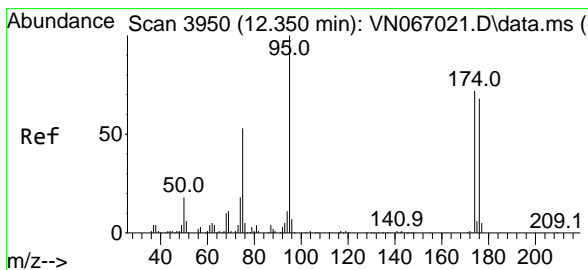
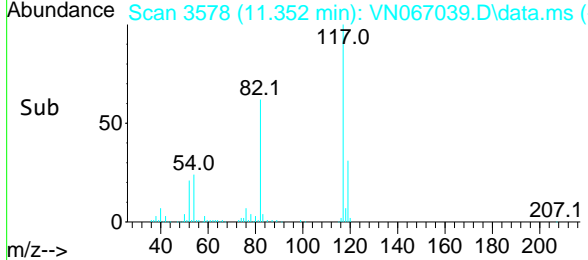
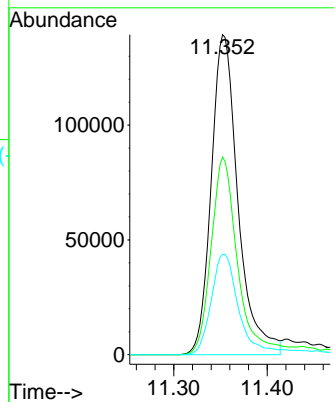
#57
 Chlorobenzene-d5
 Concen: 30.00 ug/l
 RT: 11.352 min Scan# 3578
 Delta R.T. 0.003 min
 Lab File: VN067039.D
 Acq: 7 May 2021 3:58

Instrument :
 MSVOA_N
ClientSampled :
 14B-3

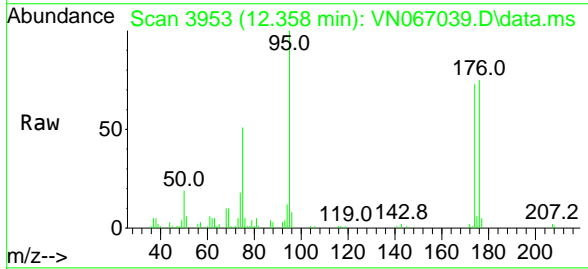


Tgt Ion: 117 Resp: 277868

Ion	Ratio	Lower	Upper
117	100		
82	61.2	49.3	73.9
119	31.9	25.5	38.3

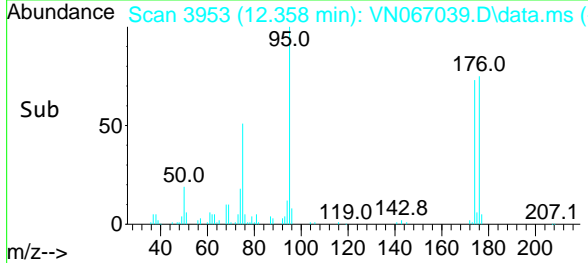
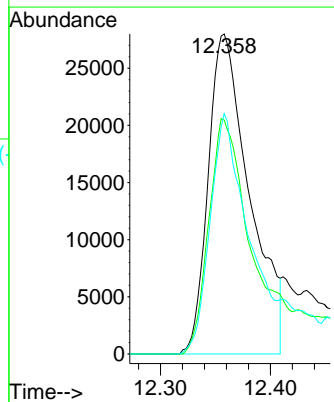


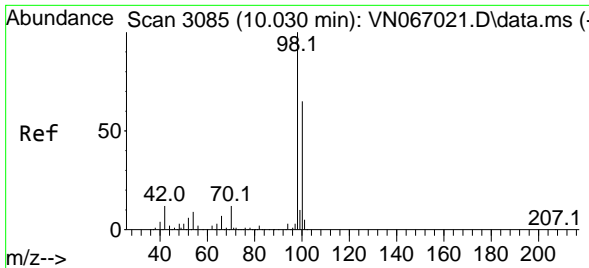
#60
 4-Bromofluorobenzene
 Concen: 15.83 ug/l
 RT: 12.358 min Scan# 3953
 Delta R.T. 0.008 min
 Lab File: VN067039.D
 Acq: 7 May 2021 3:58



Tgt Ion: 95 Resp: 73180

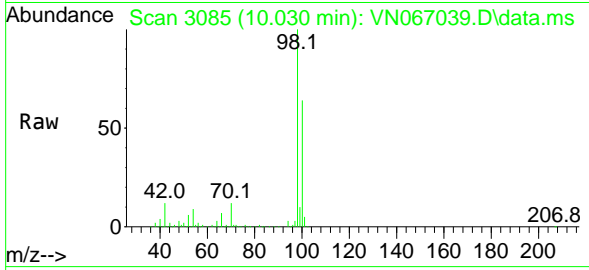
Ion	Ratio	Lower	Upper
95	100		
174	75.9	57.2	85.8
176	69.1	54.5	81.7



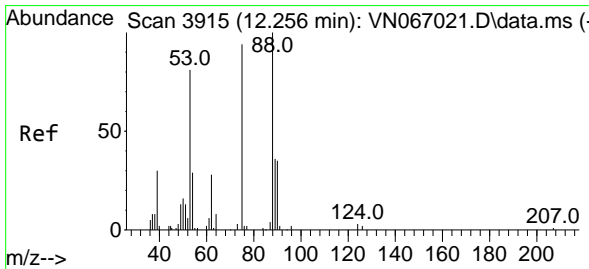
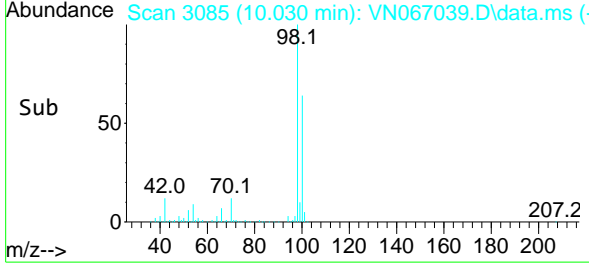
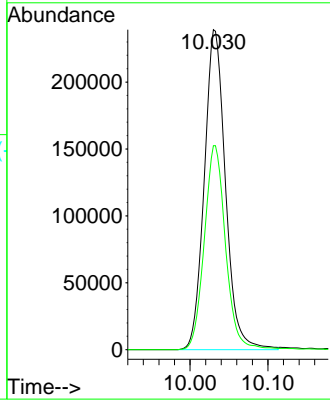


#63
 Toluene-d8
 Concen: 32.92 ug/l
 RT: 10.030 min Scan# 3085
 Delta R.T. -0.000 min
 Lab File: VN067039.D
 Acq: 7 May 2021 3:58

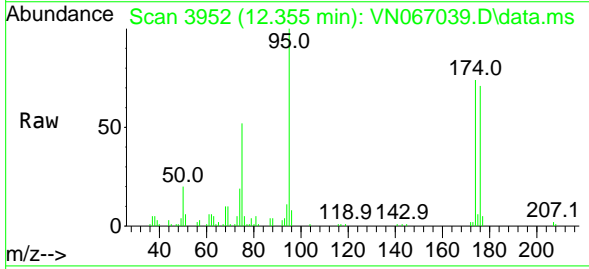
Instrument :
 MSVOA_N
ClientSampled :
 14B-3



Tgt Ion: 98 Resp: 453069
 Ion Ratio Lower Upper
 98 100
 100 63.6 51.1 76.7



#77
 t-1,4-Dichloro-2-butene
 Concen: 15.72 ug/l
 RT: 12.355 min Scan# 3952
 Delta R.T. 0.099 min
 Lab File: VN067039.D
 Acq: 7 May 2021 3:58



Tgt Ion: 75 Resp: 18289
 Ion Ratio Lower Upper
 75 100
 53 0.0 43.1 129.4#
 89 0.0 18.8 56.4#

