

Data Path : Z:\voasrv\HPCHEM1\MSVOA_N\Data\VN050824\
 Data File : VN082036.D
 Acq On : 08 May 2024 18:49
 Operator : JC\MD
 Sample : P2427-01
 Misc : 5.0mL/MSVOA_N/WATER
 ALS Vial : 14 Sample Multiplier: 1

Instrument :
 MSVOA_N
ClientSampleId :
 240424079-01

Manual Integrations
APPROVED
 Reviewed By :John Carlone 05/09/2024
 Supervised By :Mahesh Dadoda 05/09/2024

Quant Time: May 09 01:05:42 2024
 Quant Method : Z:\voasrv\HPCHEM1\MSVOA_N\methods\624N042624W.M
 Quant Title : METHOD 624 VOLATILE ORGANIC ANALYSIS
 QLast Update : Sat Apr 27 04:37:27 2024
 Response via : Initial Calibration

Compound	R.T.	QIon	Response	Conc	Units	Dev(Min)

Internal Standards						
1) Bromochloromethane	7.818	128	28387	30.000	ug/l	0.00
28) 1,4-Difluorobenzene	9.106	114	171427	30.000	ug/l	0.00
57) Chlorobenzene-d5	11.865	117	144721	30.000	ug/l	0.00
System Monitoring Compounds						
27) 1,2-Dichloroethane-d4	8.583	65	76300	32.103	ug/l	0.00
Spiked Amount	30.000	Range 91 - 110	Recovery	=	107.000%	
60) 4-Bromofluorobenzene	12.847	95	64742	26.881	ug/l	0.00
Spiked Amount	30.000	Range 63 - 112	Recovery	=	89.600%	
63) Toluene-d8	10.571	98	209135	30.429	ug/l	0.00
Spiked Amount	30.000	Range 91 - 112	Recovery	=	101.433%	
Target Compounds						
15) Acetone	4.442	58	2539m	11.444	ug/l	Qvalue
62) Toluene	10.630	91	65362	8.027	ug/l	97

(#) = qualifier out of range (m) = manual integration (+) = signals summed

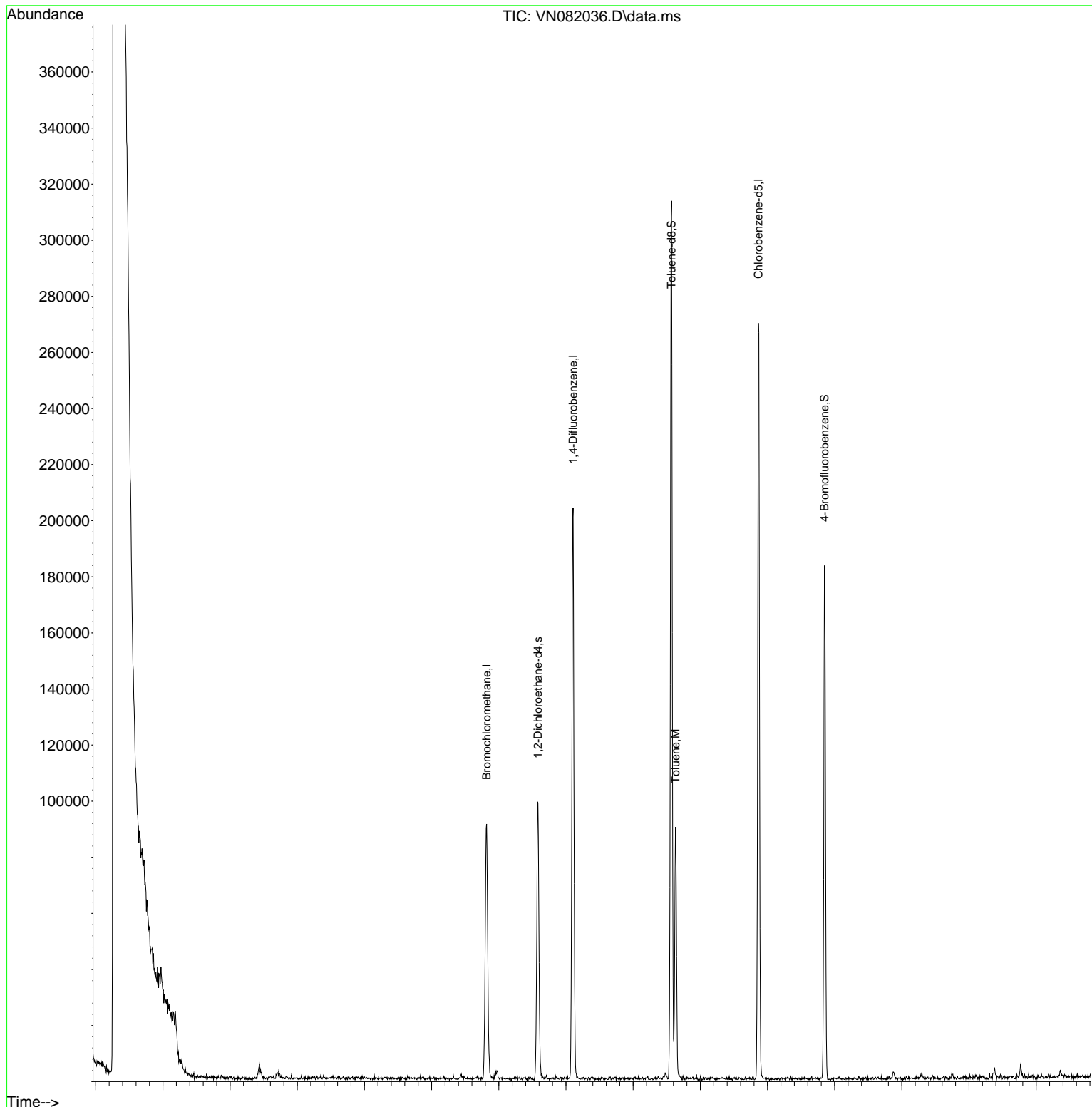
Data Path : Z:\voasrv\HPCHEM1\MSVOA_N\Data\VN050824\
 Data File : VN082036.D
 Acq On : 08 May 2024 18:49
 Operator : JC\MD
 Sample : P2427-01
 Misc : 5.0mL/MSVOA_N/WATER
 ALS Vial : 14 Sample Multiplier: 1

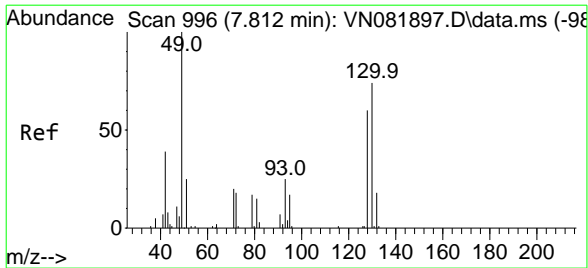
Instrument :
 MSVOA_N
ClientSampleId :
 240424079-01

Manual Integrations
APPROVED

Reviewed By :John Carlone 05/09/2024
 Supervised By :Mahesh Dadoda 05/09/2024

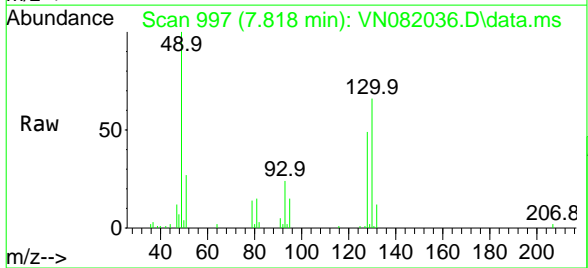
Quant Time: May 09 01:05:42 2024
 Quant Method : Z:\voasrv\HPCHEM1\MSVOA_N\methods\624N042624W.M
 Quant Title : METHOD 624 VOLATILE ORGANIC ANALYSIS
 QLast Update : Sat Apr 27 04:37:27 2024
 Response via : Initial Calibration





#1
 Bromochloromethane
 Concen: 30.000 ug/l m
 RT: 7.818 min Scan# 996
 Delta R.T. 0.006 min
 Lab File: VN082036.D
 Acq: 08 May 2024 18:49

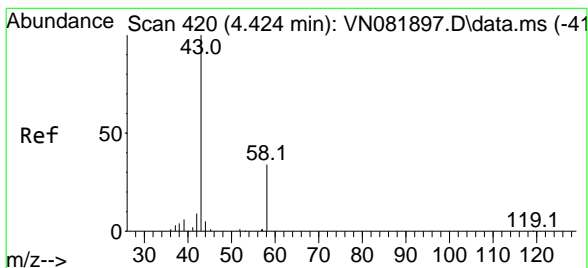
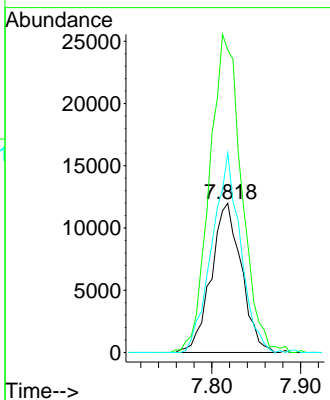
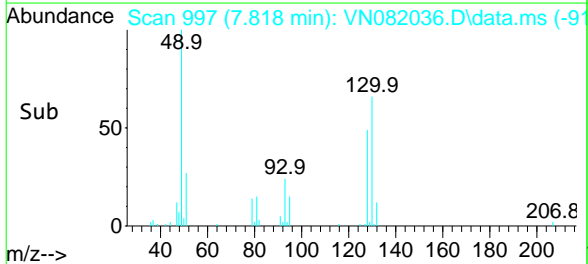
Instrument :
 MSVOA_N
 ClientSampleId :
 240424079-01



Tgt Ion: 128 Resp: 28387
 Ion Ratio Lower Upper
 128 100
 49 224.3 0.0 403.7
 130 125.7 0.0 323.3

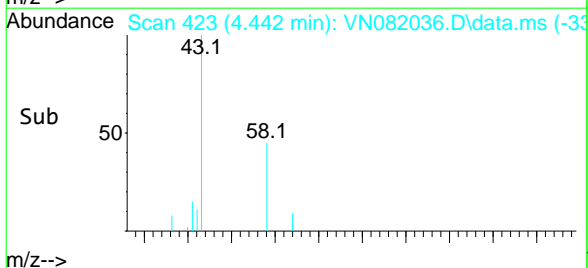
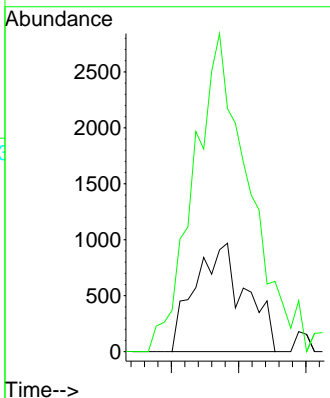
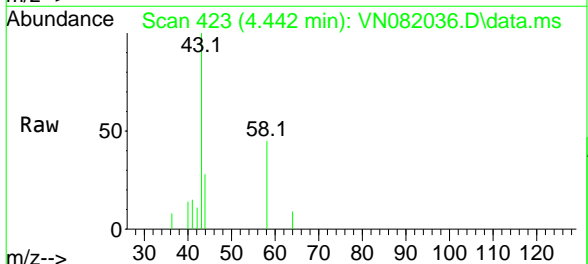
Manual Integrations
 APPROVED

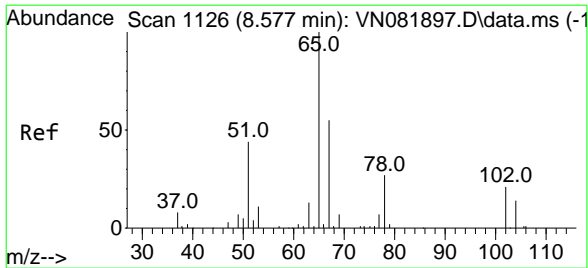
Reviewed By : John Carlone 05/09/2024
 Supervised By : Mahesh Dadoda 05/09/2024



#15
 Acetone
 Concen: 11.444 ug/l m
 RT: 4.442 min Scan# 423
 Delta R.T. 0.018 min
 Lab File: VN082036.D
 Acq: 08 May 2024 18:49

Tgt Ion: 58 Resp: 2539
 Ion Ratio Lower Upper
 58 100
 43 224.1 223.1 334.7





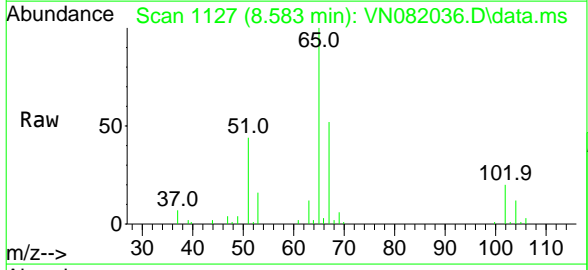
#27
 1,2-Dichloroethane-d4
 Concen: 32.103 ug/l
 RT: 8.583 min Scan# 1127
 Delta R.T. 0.006 min
 Lab File: VN082036.D
 Acq: 08 May 2024 18:49

Instrument :

MSVOA_N

ClientSampleId :

240424079-01

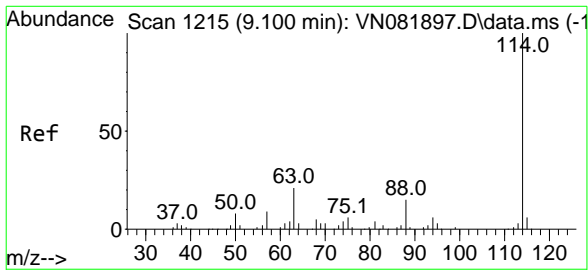
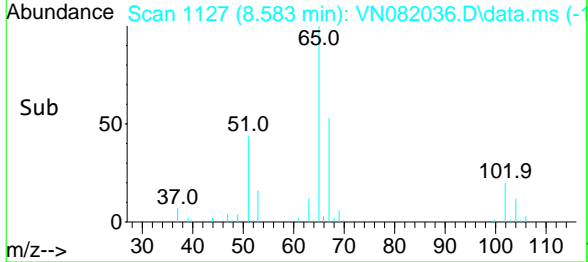
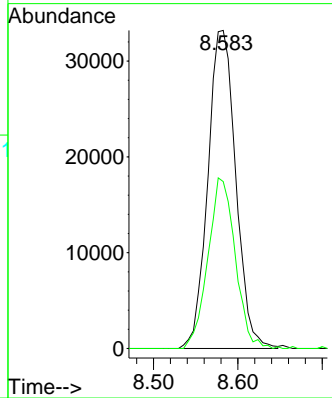


Tgt Ion: 65 Resp: 76300
 Ion Ratio Lower Upper
 65 100
 67 52.3 43.2 64.8

Manual Integrations

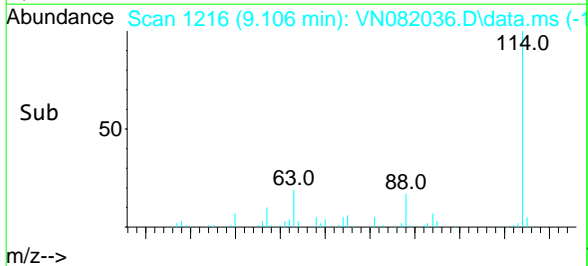
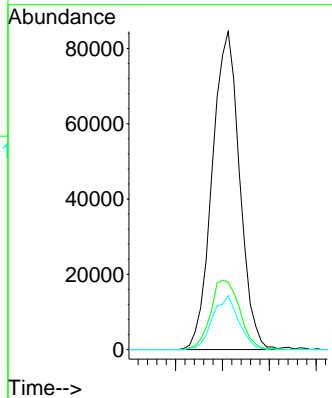
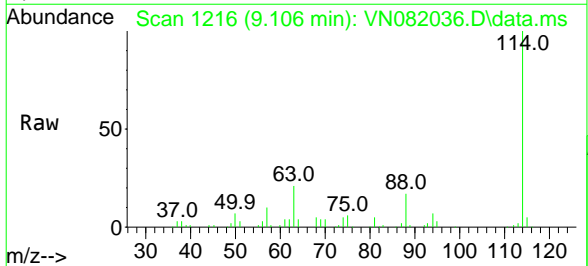
APPROVED

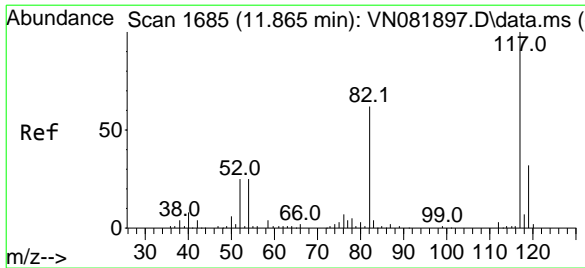
Reviewed By :John Carlone 05/09/2024
 Supervised By :Mahesh Dadoda 05/09/2024



#28
 1,4-Difluorobenzene
 Concen: 30.000 ug/l
 RT: 9.106 min Scan# 1216
 Delta R.T. 0.006 min
 Lab File: VN082036.D
 Acq: 08 May 2024 18:49

Tgt Ion:114 Resp: 171427
 Ion Ratio Lower Upper
 114 100
 63 23.1 15.9 23.9
 88 16.2 12.7 19.1





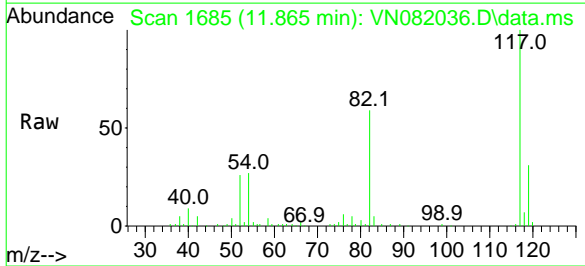
#57
 Chlorobenzene-d5
 Concen: 30.000 ug/l
 RT: 11.865 min Scan# 16
 Delta R.T. -0.000 min
 Lab File: VN082036.D
 Acq: 08 May 2024 18:49

Instrument :

MSVOA_N

ClientSampleId :

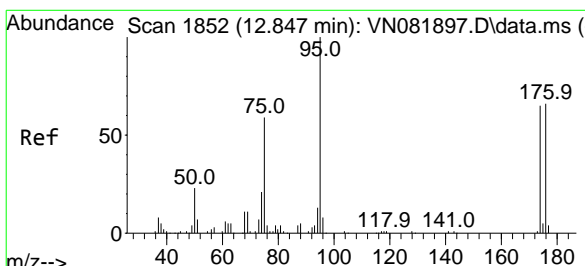
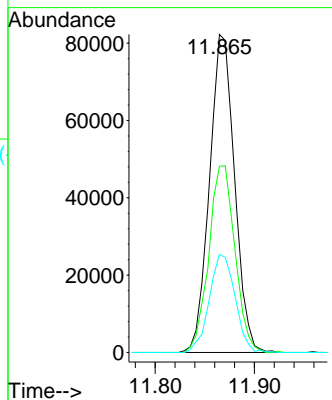
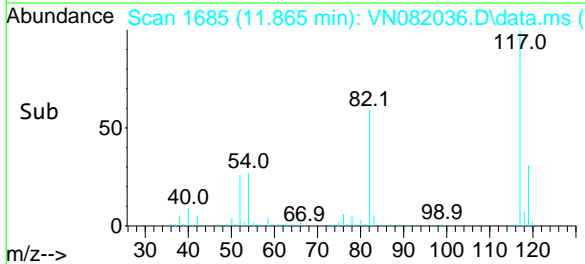
240424079-01



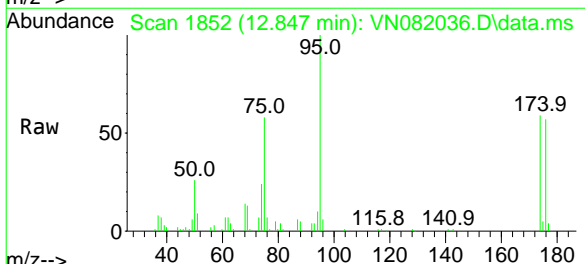
Tgt Ion: 117 Resp: 144721
 Ion Ratio Lower Upper
 117 100
 82 61.2 46.6 69.8
 119 31.5 25.4 38.2

Manual Integrations
 APPROVED

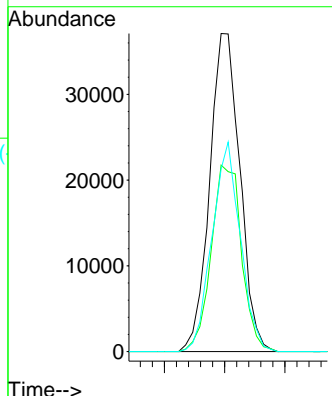
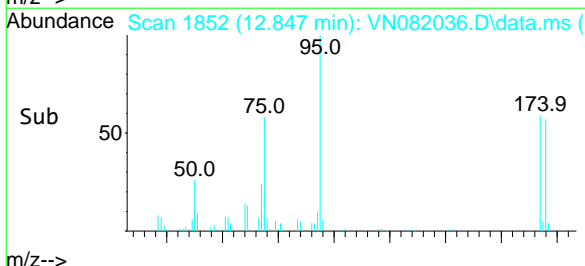
Reviewed By : John Carlone 05/09/2024
 Supervised By : Mahesh Dadoda 05/09/2024

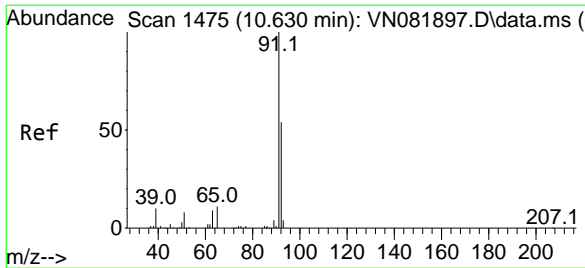


#60
 4-Bromofluorobenzene
 Concen: 26.881 ug/l
 RT: 12.847 min Scan# 1852
 Delta R.T. -0.000 min
 Lab File: VN082036.D
 Acq: 08 May 2024 18:49



Tgt Ion: 95 Resp: 64742
 Ion Ratio Lower Upper
 95 100
 174 58.7 60.5 90.7#
 176 61.6 57.8 86.6





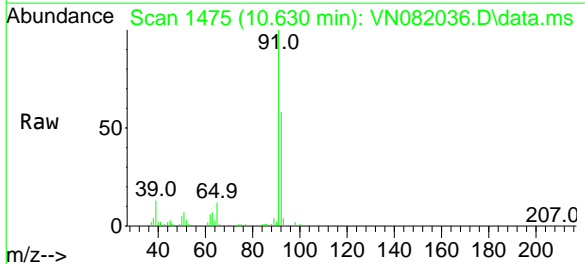
#62
 Toluene
 Concen: 8.027 ug/l
 RT: 10.630 min Scan# 1475
 Delta R.T. -0.000 min
 Lab File: VN082036.D
 Acq: 08 May 2024 18:49

Instrument :

MSVOA_N

ClientSampleId :

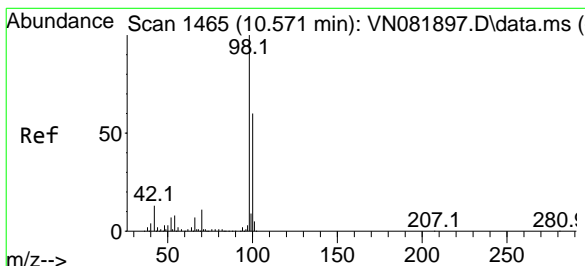
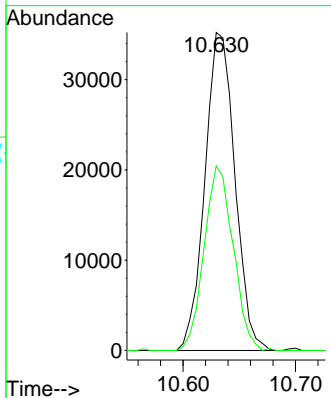
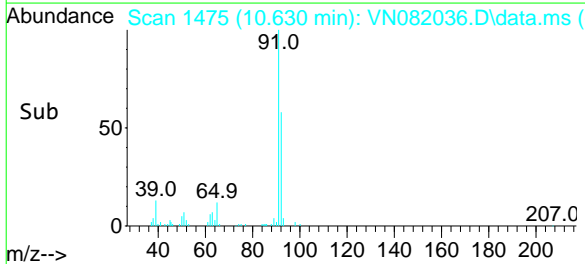
240424079-01



Tgt Ion: 91 Resp: 65362
 Ion Ratio Lower Upper
 91 100
 92 56.1 46.5 69.7

Manual Integrations
 APPROVED

Reviewed By :John Carlone 05/09/2024
 Supervised By :Mahesh Dadoda 05/09/2024



#63
 Toluene-d8
 Concen: 30.429 ug/l
 RT: 10.571 min Scan# 1465
 Delta R.T. -0.000 min
 Lab File: VN082036.D
 Acq: 08 May 2024 18:49

Tgt Ion: 98 Resp: 209135
 Ion Ratio Lower Upper
 98 100
 100 65.6 52.7 79.1

