

Data Path : Z:\VOASRV\HPCHEM1\MSVOA N\DATA\VN050919\
 Data File : VN055488.D
 Acq On : 9 May 2019 11:28
 Operator : JC/SP
 Sample : K2241-07
 Misc : 5.00mL/MSVOA N/WATER
 ALS Vial : 5 Sample Multiplier: 1

Instrument :
 MSVOA_N
 ClientSampled :
 LOD-MDL-WATER-01-QT2-2019

Quant Time: May 10 04:10:40 2019
 Quant Method : Z:\VOASRV\HPCHEM1\MSVOA_N\METHODS\82N050819W.M
 Quant Title : SW846 8260
 QLast Update : Thu May 09 04:17:44 2019
 Response via : Initial Calibration

Internal Standards	R.T.	QIon	Response	Conc	Units	Dev(Min)
1) Pentafluorobenzene	7.67	168	708516	50.00	ug/l	0.00
34) 1,4-Difluorobenzene	8.59	114	1211665	50.00	ug/l	0.00
63) Chlorobenzene-d5	11.41	117	1042876	50.00	ug/l	0.00
72) 1,4-Dichlorobenzene-d4	13.34	152	282771	50.00	ug/l	0.00

System Monitoring Compounds

33) 1,2-Dichloroethane-d4	8.03	65	538056	50.44	ug/l	0.00
Spiked Amount	50.000		Recovery	=	100.88%	
35) Dibromofluoromethane	7.59	113	402292	51.47	ug/l	0.00
Spiked Amount	50.000		Recovery	=	102.94%	
50) Toluene-d8	10.09	98	1517067	49.81	ug/l	0.00
Spiked Amount	50.000		Recovery	=	99.62%	
62) 4-Bromofluorobenzene	12.40	95	434526	42.31	ug/l	0.00
Spiked Amount	50.000		Recovery	=	84.62%	

Target Compounds

						Qvalue
4) Vinyl Chloride	2.19	62	2324	0.210	ug/l #	88
5) Bromomethane	2.56	94	1772	0.292	ug/l	87
7) Trichlorofluoromethane	3.02	101	2592	0.214	ug/l	87
11) Tert butyl alcohol	4.81	59	966	0.613	ug/l #	73
13) Acrolein	3.60	56	836	0.796	ug/l #	78
15) Acrylonitrile	4.99	53	3358	0.688	ug/l #	23
16) Acetone	3.81	43	2622	0.531	ug/l #	73
17) Carbon Disulfide	4.04	76	5131	0.243	ug/l	97
18) Methyl Acetate	4.34	43	8757	Below Cal		92
23) Vinyl Acetate	5.90	43	16447	0.660	ug/l	98
25) 2-Butanone	6.86	43	5621	0.824	ug/l #	90
29) Tetrahydrofuran	7.22	42	2768	0.614	ug/l #	67
31) Cyclohexane	7.66	56	17446	1.013	ug/l #	1
36) 1,1-Dichloropropene	7.67	75	56176	4.706	ug/l #	51
38) Carbon Tetrachloride	7.67	117	67914	6.757	ug/l #	16
42) 1,2-Dichloroethane	8.12	62	3708	0.285	ug/l	81
44) Trichloroethene	8.83	130	1892	0.215	ug/l	68
49) 1,4-Dioxane	9.21	88	179	0.964	ug/l #	1
51) 4-Methyl-2-Pentanone	9.99	43	10061	0.773	ug/l	94
58) 2-Chloroethyl Vinyl ether	9.70	63	2148	12.987	ug/l #	89
59) 2-Hexanone	10.75	43	6153	0.674	ug/l	99
68) m/p-Xylenes	11.62	106	4437	0.307	ug/l	91
73) Isopropylbenzene	12.25	105	5720	Below Cal		96
75) 1,1,2,2-Tetrachloroethane	12.51	83	1995	Below Cal	#	91
76) 1,2,3-Trichloropropane	12.40	75	220773	28.679	ug/l #	100
78) n-propylbenzene	12.59	91	6549	0.216	ug/l	97
81) trans-1,4-Dichloro-2-buten	12.40	75	220773	105.823	ug/l #	7
82) 4-Chlorotoluene	12.78	91	3773	0.211	ug/l	97
83) tert-Butylbenzene	12.99	119	3906	0.202	ug/l	99
85) sec-Butylbenzene	13.17	105	5706	0.221	ug/l	99
87) 1,3-Dichlorobenzene	13.28	146	2061	0.214	ug/l	82
88) 1,4-Dichlorobenzene	13.28	146	2061	0.217	ug/l	82
89) n-Butylbenzene	13.62	91	3550	0.218	ug/l	94
91) 1,2-Dichlorobenzene	13.65	146	2836	0.295	ug/l	70

Data Path : Z:\VOASRV\HPCHEM1\MSVOA N\DATA\VN050919\
 Data File : VN055488.D
 Acq On : 9 May 2019 11:28
 Operator : JC/SP
 Sample : K2241-07
 Misc : 5.00mL/MSVOA N/WATER
 ALS Vial : 5 Sample Multiplier: 1

Instrument :
 MSVOA_N
 ClientSampleId :
 LOD-MDL-WATER-01-QT2-2019

Quant Time: May 10 04:10:40 2019
 Quant Method : Z:\VOASRV\HPCHEM1\MSVOA_N\METHODS\82N050819W.M
 Quant Title : SW846 8260
 QLast Update : Thu May 09 04:17:44 2019
 Response via : Initial Calibration

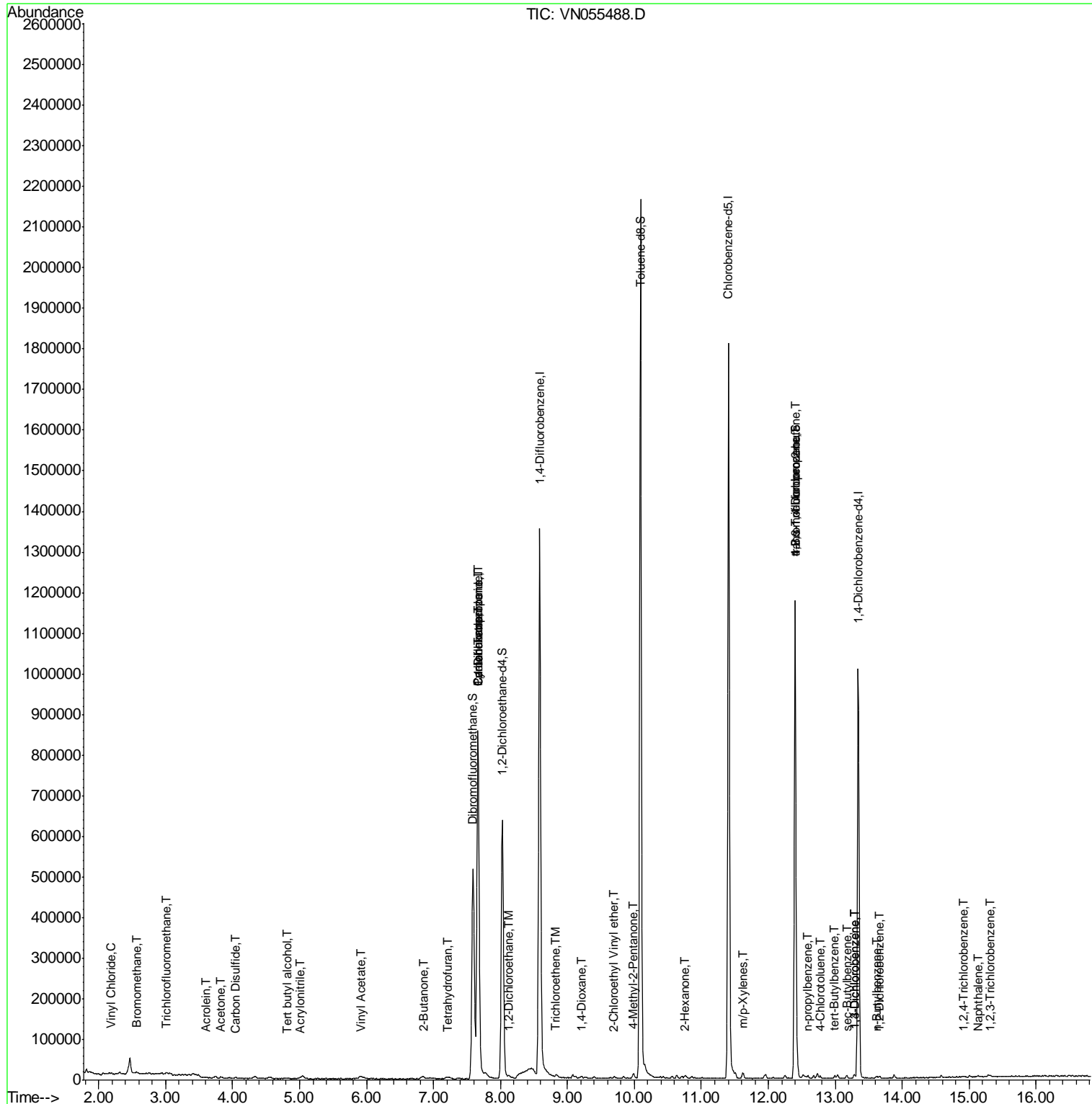
Internal Standards	R.T.	QIon	Response	Conc	Units	Dev(Min)
93) 1,2,4-Trichlorobenzene	14.91	180	1272	3.489	ug/l #	85
94) Hexachlorobutadiene	15.00	225	941	Below Cal	#	75
95) Naphthalene	15.13	128	2948	3.172	ug/l #	89
96) 1,2,3-Trichlorobenzene	15.31	180	624	2.554	ug/l #	1

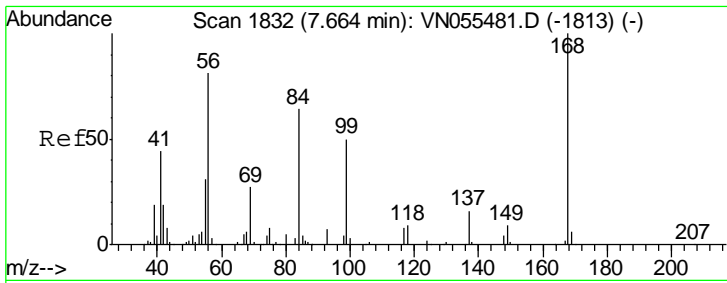
(#) = qualifier out of range (m) = manual integration (+) = signals summed

Data Path : Z:\VOASRV\HPCHEM1\MSVOA N\DATA\VN050919\
 Data File : VN055488.D
 Acq On : 9 May 2019 11:28
 Operator : JC/SP
 Sample : K2241-07
 Misc : 5.00mL/MSVOA N/WATER
 ALS Vial : 5 Sample Multiplier: 1

Instrument :
 MSVOA_N
 Client Sampled :
 LOD-MDL-WATER-01-QT2-2019

Quant Time: May 10 04:10:40 2019
 Quant Method : Z:\VOASRV\HPCHEM1\MSVOA_N\METHODS\82N050819W.M
 Quant Title : SW846 8260
 QLast Update : Thu May 09 04:17:44 2019
 Response via : Initial Calibration

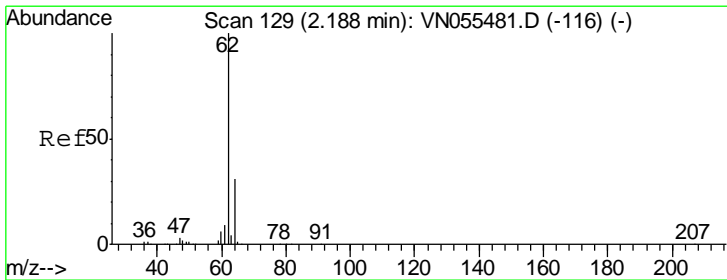
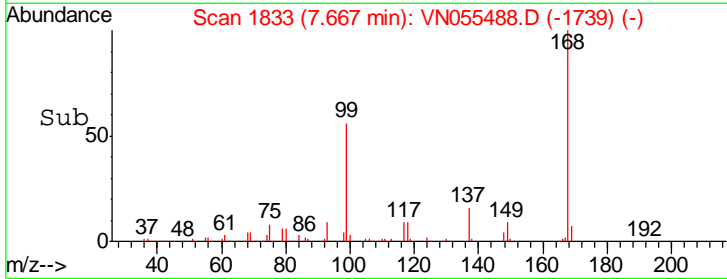
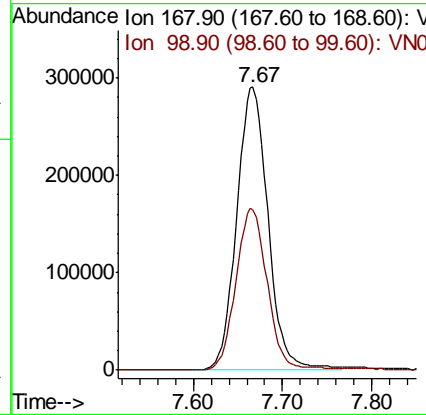
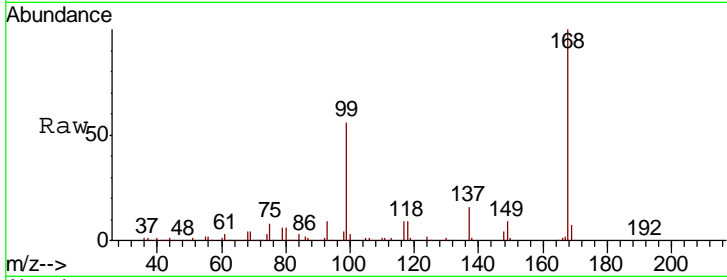




#1
 Pentafluorobenzene
 Concen: 50.000 ug/l
 RT: 7.67 min Scan# 1833
 Delta R.T. 0.00 min
 Lab File: VN055488.D
 Acq: 9 May 2019 11:28

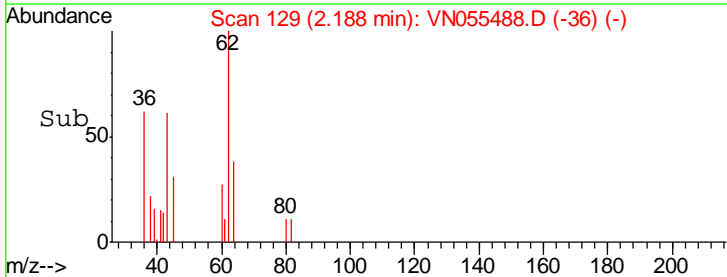
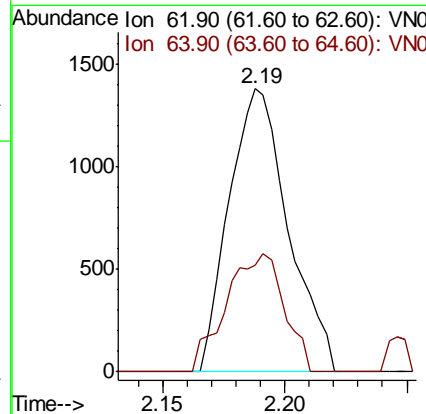
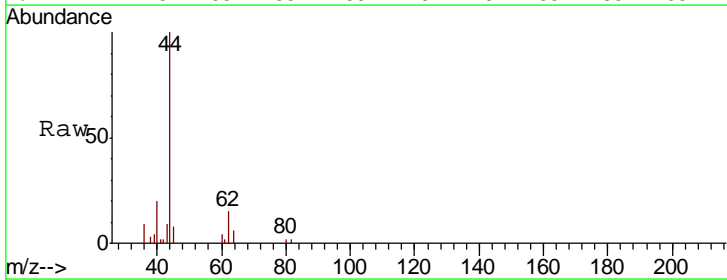
Instrument :
 MSVOA_N
 ClientSampled :
 LOD-MDL-WATER-01-QT2-2019

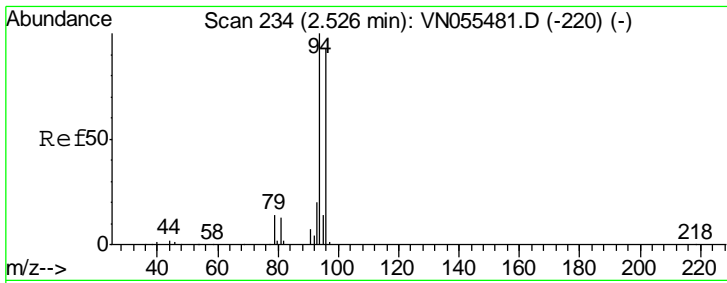
Tgt Ion: 168 Resp: 708516
 Ion Ratio Lower Upper
 168 100
 99 56.5 47.0 70.4



#4
 Vinyl Chloride
 Concen: 0.210 ug/l
 RT: 2.19 min Scan# 129
 Delta R.T. -0.00 min
 Lab File: VN055488.D
 Acq: 9 May 2019 11:28

Tgt Ion: 62 Resp: 2324
 Ion Ratio Lower Upper
 62 100
 64 37.7 25.0 37.6#

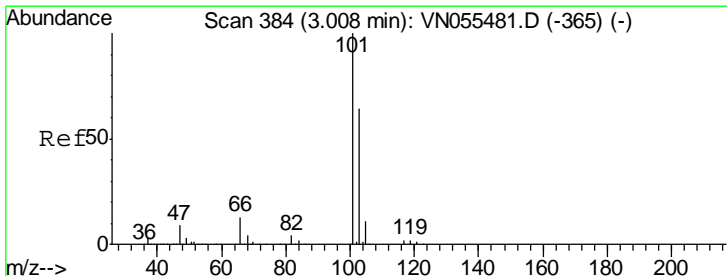
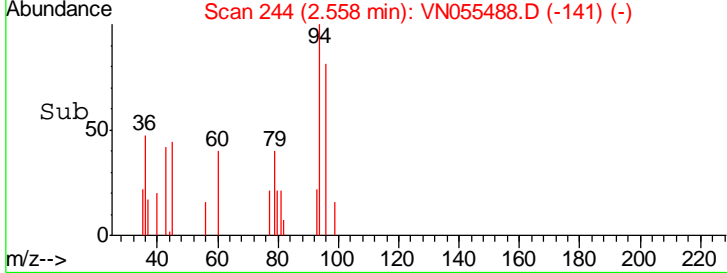
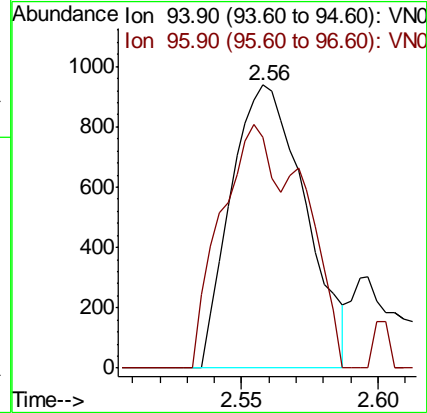
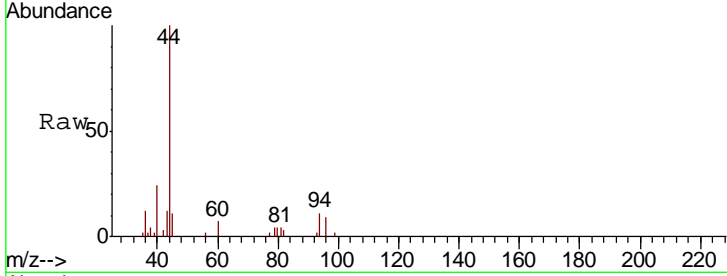




#5
 Bromomethane
 Concen: 0.292 ug/l
 RT: 2.56 min Scan# 244
 Delta R.T. 0.03 min
 Lab File: VN055488.D
 Acq: 9 May 2019 11:28

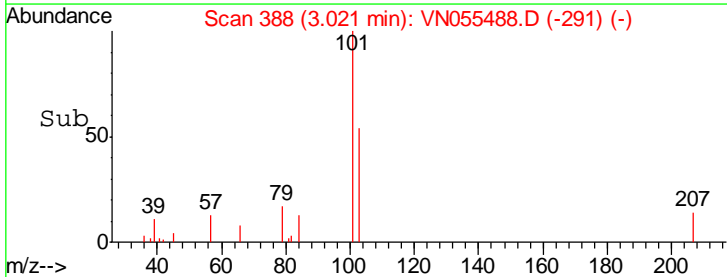
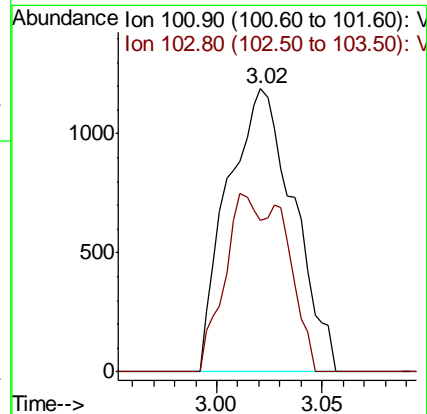
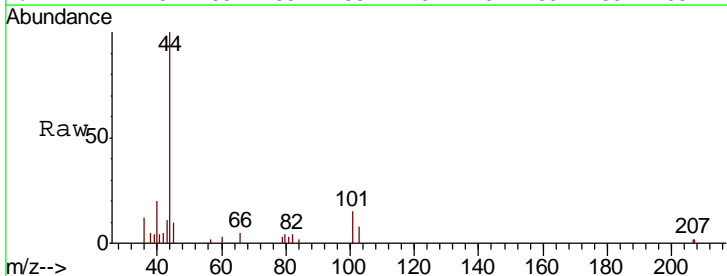
Instrument :
 MSVOA_N
 ClientSampled :
 LOD-MDL-WATER-01-QT2-2019

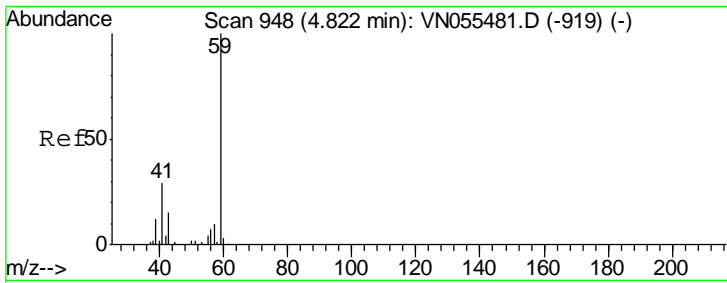
Tgt Ion: 94 Resp: 1772
 Ion Ratio Lower Upper
 94 100
 96 81.4 74.8 112.2



#7
 Trichlorofluoromethane
 Concen: 0.214 ug/l
 RT: 3.02 min Scan# 388
 Delta R.T. 0.01 min
 Lab File: VN055488.D
 Acq: 9 May 2019 11:28

Tgt Ion: 101 Resp: 2592
 Ion Ratio Lower Upper
 101 100
 103 53.6 51.2 76.8

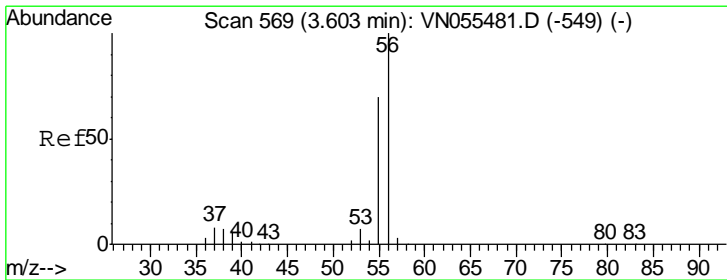
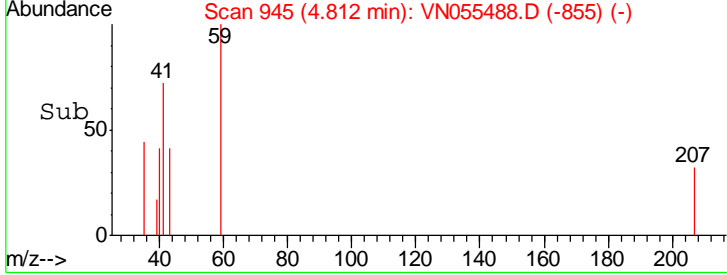
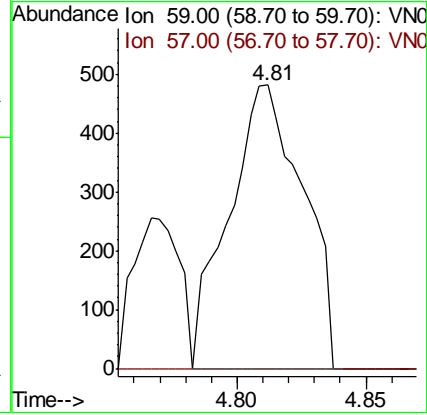
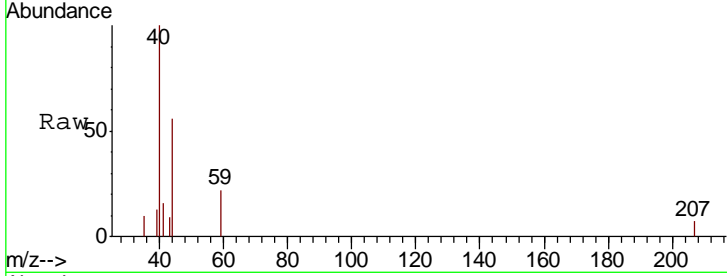




#11
 Tert butyl alcohol
 Concen: 0.613 ug/l
 RT: 4.81 min Scan# 945
 Delta R.T. -0.01 min
 Lab File: VN055488.D
 Acq: 9 May 2019 11:28

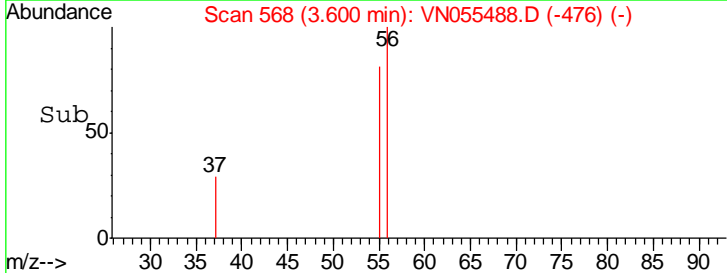
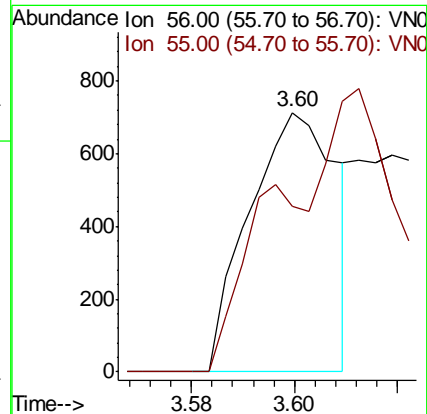
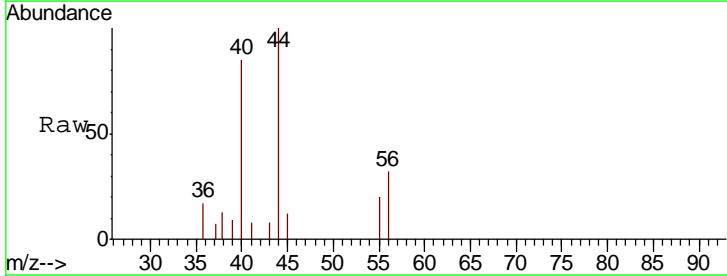
Instrument :
 MSVOA_N
 ClientSampled :
 LOD-MDL-WATER-01-QT2-2019

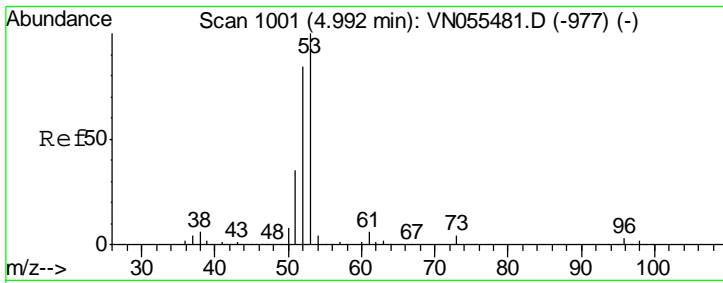
Tgt Ion: 59 Resp: 966
 Ion Ratio Lower Upper
 59 100
 57 0.0 8.0 12.0#



#13
 Acrolein
 Concen: 0.796 ug/l
 RT: 3.60 min Scan# 568
 Delta R.T. -0.00 min
 Lab File: VN055488.D
 Acq: 9 May 2019 11:28

Tgt Ion: 56 Resp: 836
 Ion Ratio Lower Upper
 56 100
 55 54.1 57.7 86.5#

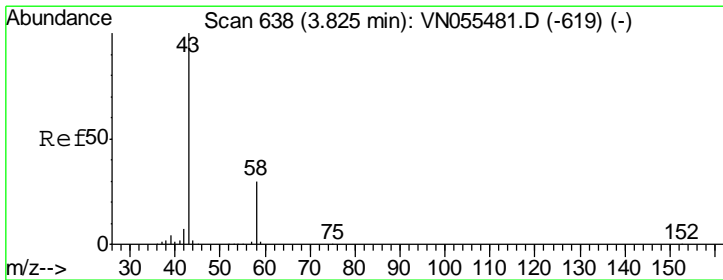
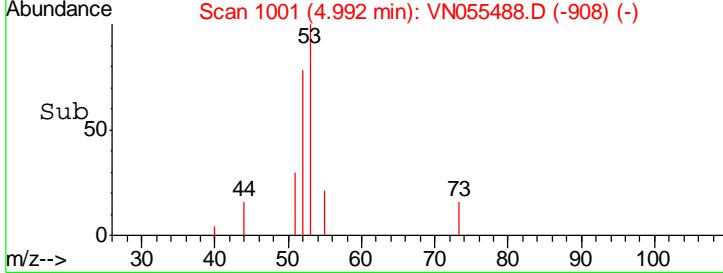
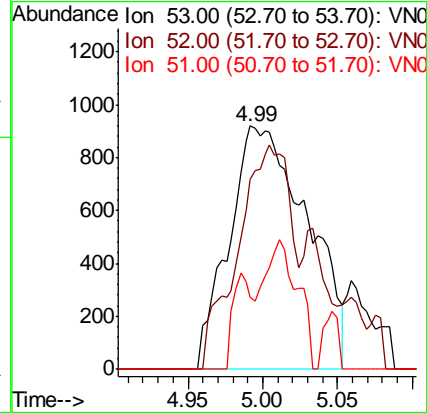
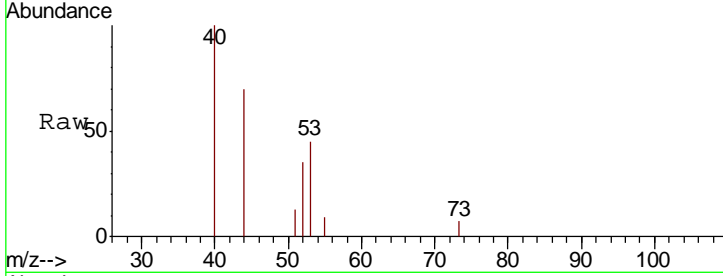




#15
 Acrylonitrile
 Concen: 0.688 ug/l
 RT: 4.99 min Scan# 1001
 Delta R.T. -0.00 min
 Lab File: VN055488.D
 Acq: 9 May 2019 11:28

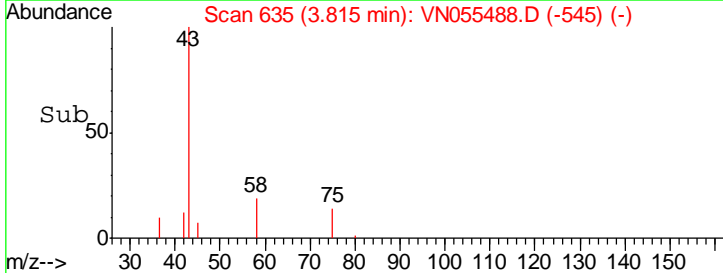
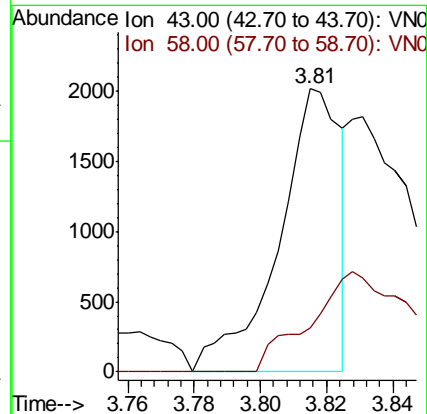
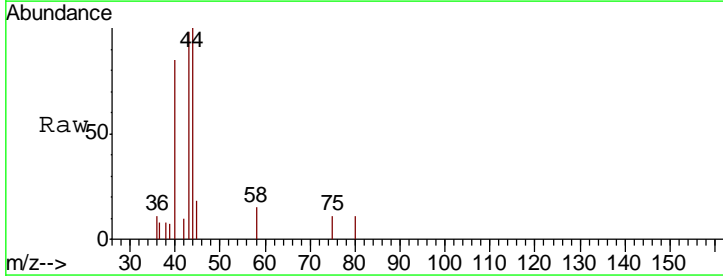
Instrument :
 MSVOA_N
 ClientSampled :
 LOD-MDL-WATER-01-QT2-2019

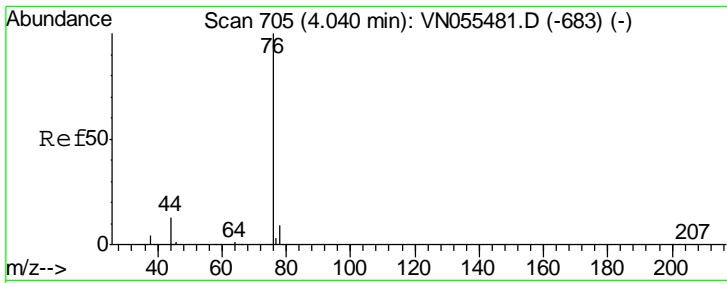
Tgt Ion	Resp	Lower	Upper
53	100		
52	0.0	66.1	99.1#
51	10.1	28.3	42.5#



#16
 Acetone
 Concen: 0.531 ug/l
 RT: 3.81 min Scan# 635
 Delta R.T. -0.01 min
 Lab File: VN055488.D
 Acq: 9 May 2019 11:28

Tgt Ion	Resp	Lower	Upper
43	100		
58	15.4	24.2	36.2#

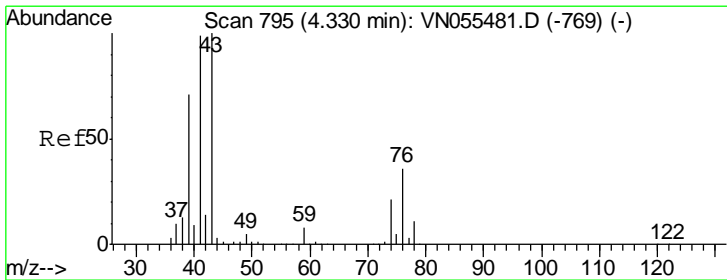
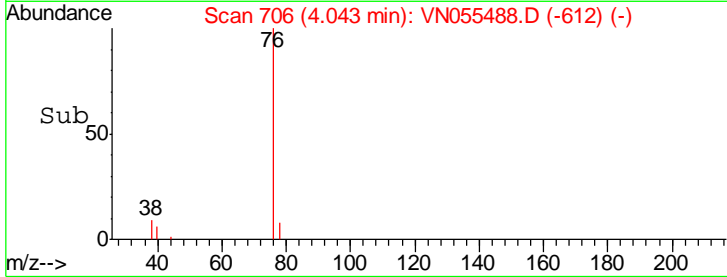
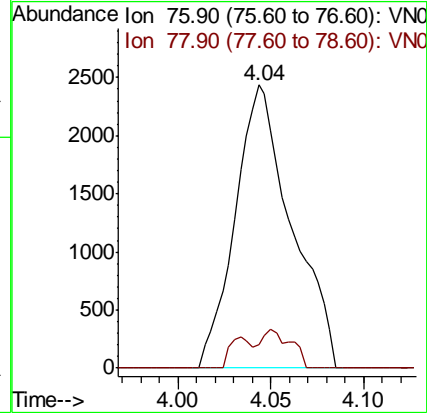
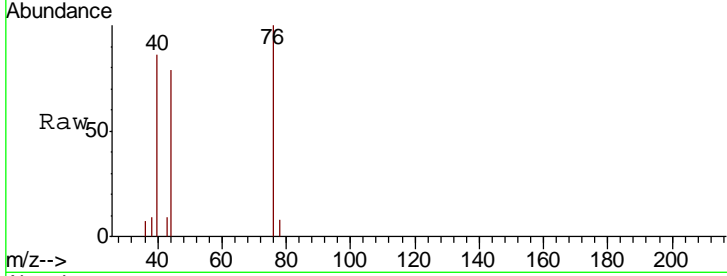




#17
 Carbon Disulfide
 Concen: 0.243 ug/l
 RT: 4.04 min Scan# 706
 Delta R.T. 0.00 min
 Lab File: VN055488.D
 Acq: 9 May 2019 11:28

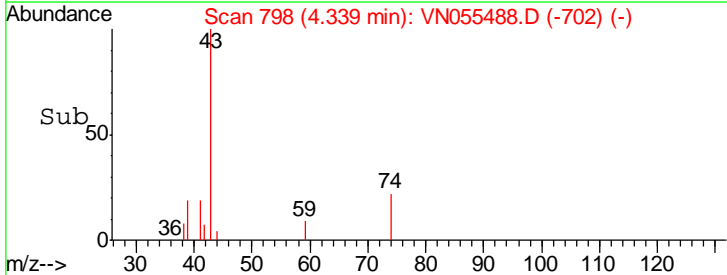
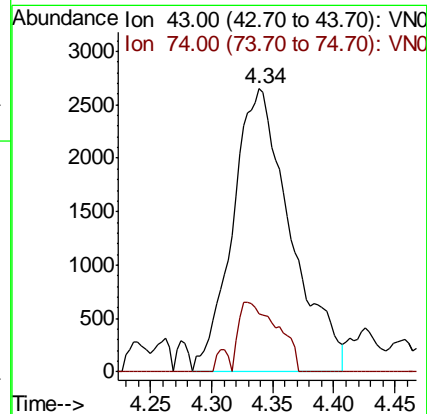
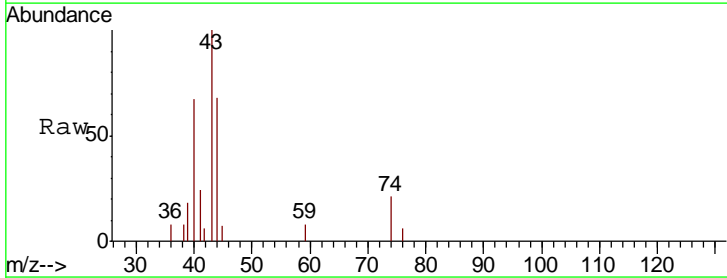
Instrument :
 MSVOA_N
 ClientSampled :
 LOD-MDL-WATER-01-QT2-2019

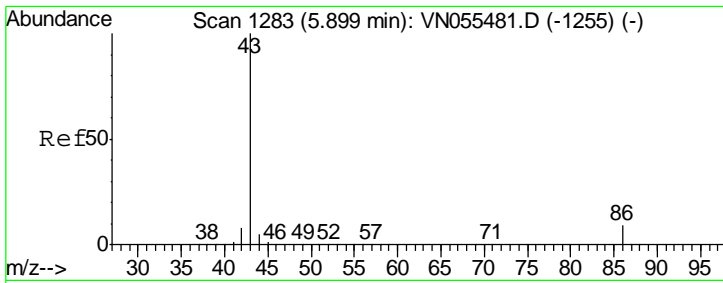
Tgt Ion	Resp	Lower	Upper
76	100		
78	8.2	7.4	11.0



#18
 Methyl Acetate
 Concen: Below Cal
 RT: 4.34 min Scan# 798
 Delta R.T. 0.01 min
 Lab File: VN055488.D
 Acq: 9 May 2019 11:28

Tgt Ion	Resp	Lower	Upper
43	100		
74	16.5	16.3	24.5

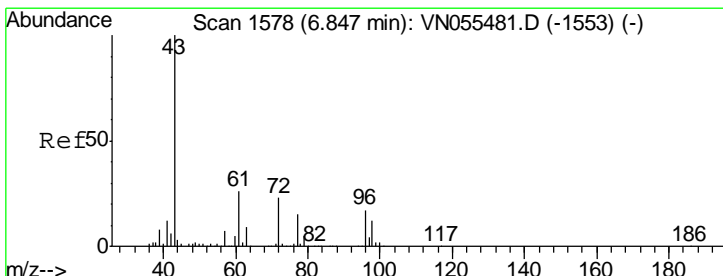
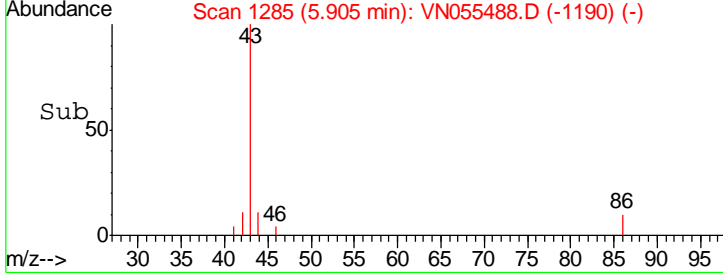
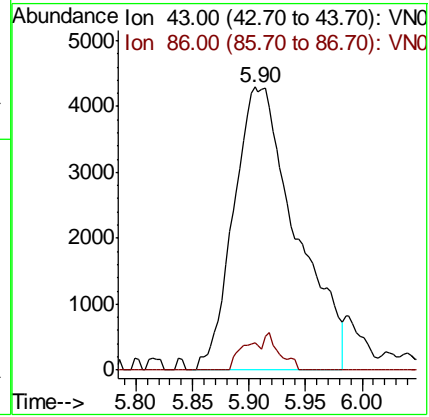
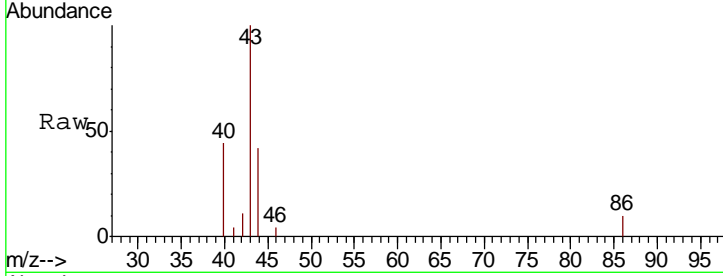




#23
 Vinyl Acetate
 Concen: 0.660 ug/l
 RT: 5.90 min Scan# 1285
 Delta R.T. 0.01 min
 Lab File: VN055488.D
 Acq: 9 May 2019 11:28

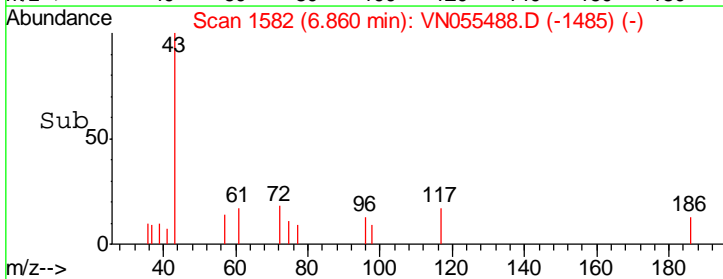
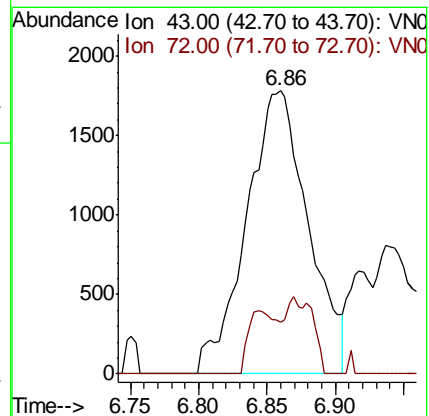
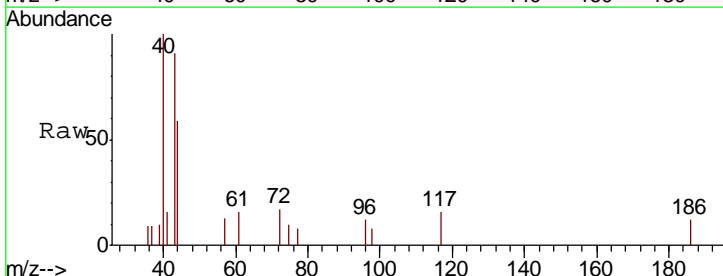
Instrument :
 MSVOA_N
ClientSampleId :
 LOD-MDL-WATER-01-QT2-2019

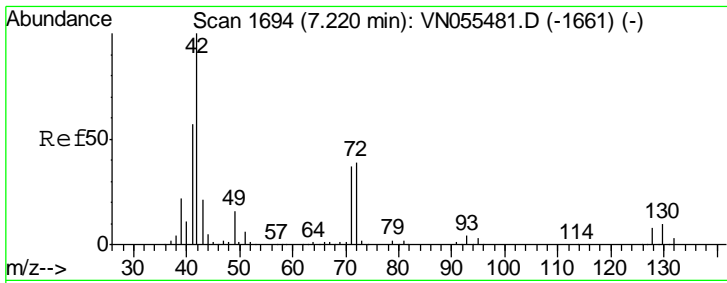
Tgt Ion	Resp	Lower	Upper
43	16447		
86	9.8	7.1	10.7



#25
 2-Butanone
 Concen: 0.824 ug/l
 RT: 6.86 min Scan# 1582
 Delta R.T. 0.01 min
 Lab File: VN055488.D
 Acq: 9 May 2019 11:28

Tgt Ion	Resp	Lower	Upper
43	5621		
72	18.5	18.6	27.8#

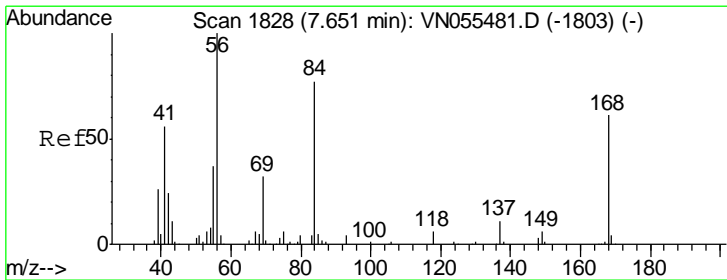
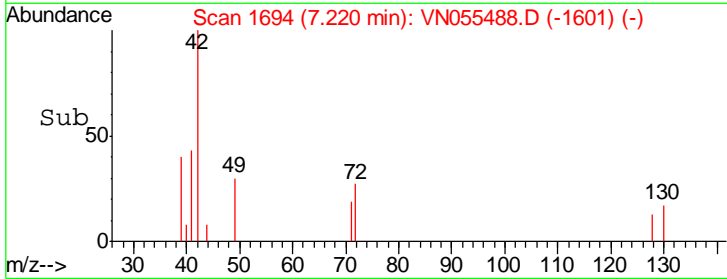
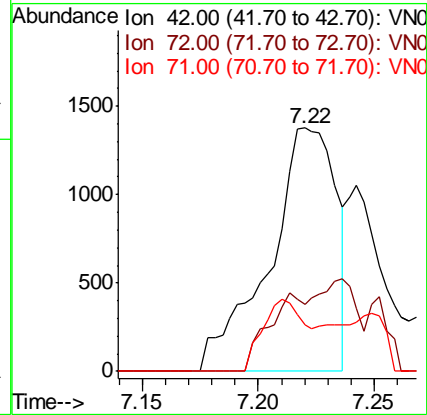
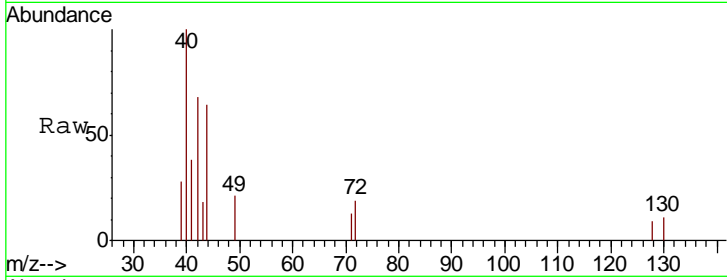




#29
 Tetrahydrofuran
 Concen: 0.614 ug/l
 RT: 7.22 min Scan# 1694
 Delta R.T. -0.00 min
 Lab File: VN055488.D
 Acq: 9 May 2019 11:28

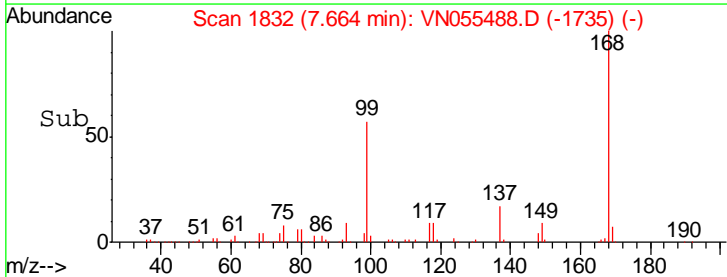
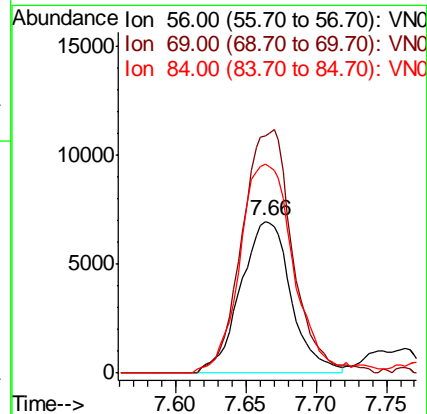
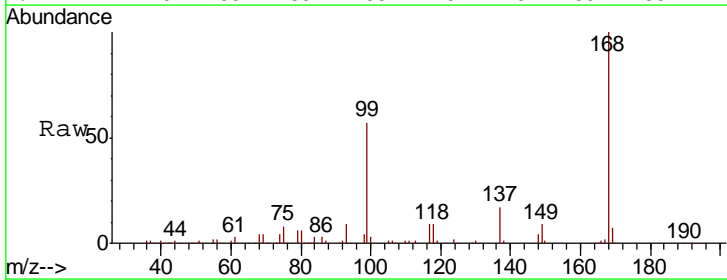
Instrument :
 MSVOA_N
 ClientSampled :
 LOD-MDL-WATER-01-QT2-2019

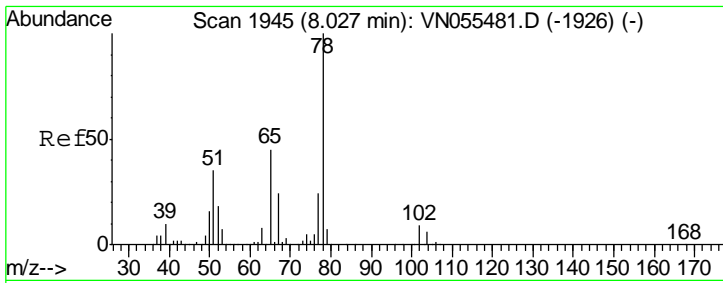
Tgt Ion	Resp	Lower	Upper
42	2768		
72	17.5	31.0	46.6#
71	18.5	29.4	44.2#



#31
 Cyclohexane
 Concen: 1.013 ug/l
 RT: 7.66 min Scan# 1832
 Delta R.T. 0.01 min
 Lab File: VN055488.D
 Acq: 9 May 2019 11:28

Tgt Ion	Resp	Lower	Upper
56	17446		
69	156.4	26.0	39.0#
84	137.5	61.9	92.9#

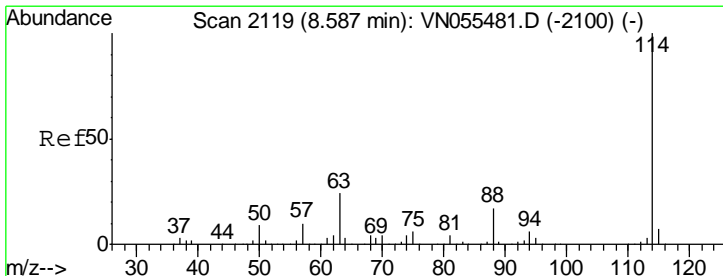
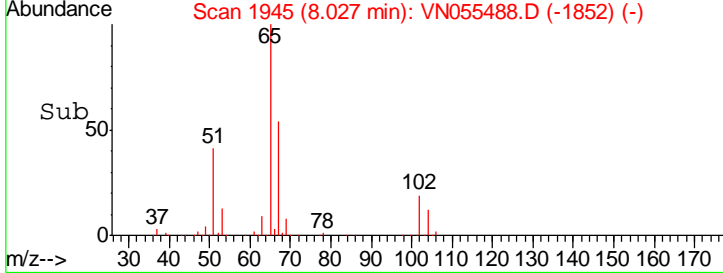
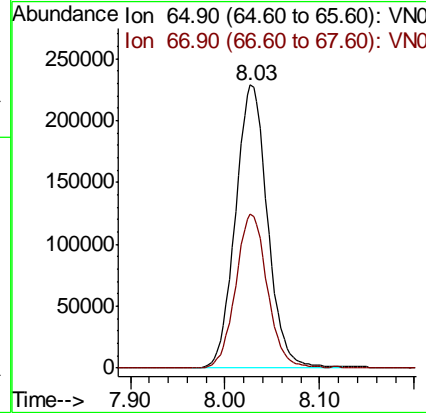
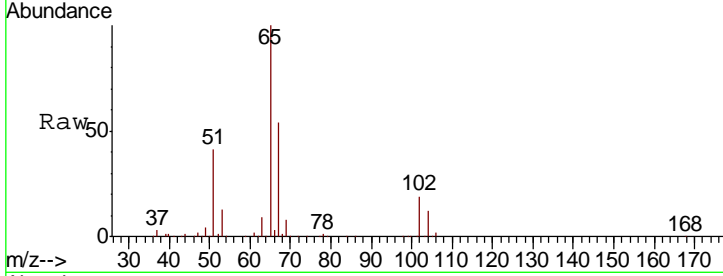




#33
 1,2-Dichloroethane-d4
 Concen: 50.437 ug/l
 RT: 8.03 min Scan# 1945
 Delta R.T. -0.00 min
 Lab File: VN055488.D
 Acq: 9 May 2019 11:28

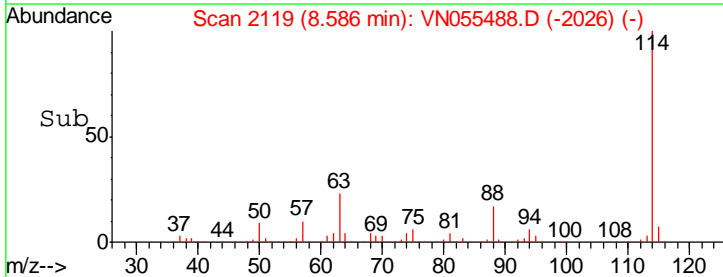
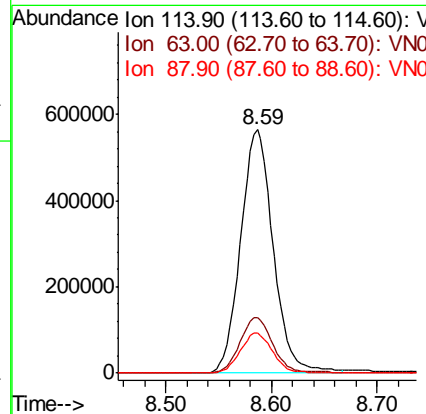
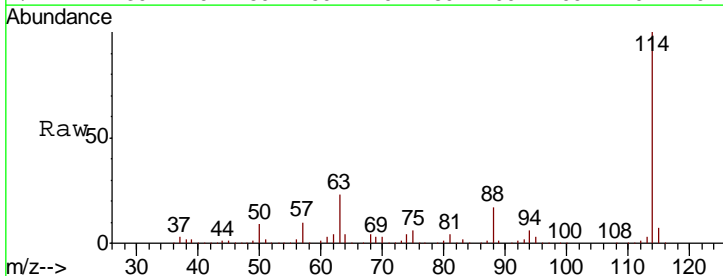
Instrument :
 MSVOA_N
 ClientSampled :
 LOD-MDL-WATER-01-QT2-2019

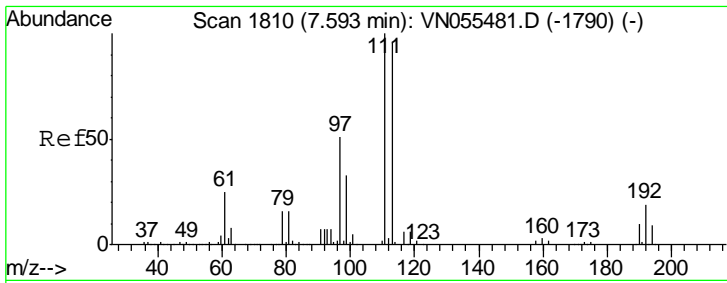
Tgt Ion	Resp	Lower	Upper
65	100		
67	53.8	0.0	109.6



#34
 1,4-Difluorobenzene
 Concen: 50.000 ug/l
 RT: 8.59 min Scan# 2119
 Delta R.T. -0.00 min
 Lab File: VN055488.D
 Acq: 9 May 2019 11:28

Tgt Ion	Resp	Lower	Upper
114	100		
63	22.9	0.0	47.4
88	16.6	0.0	34.0

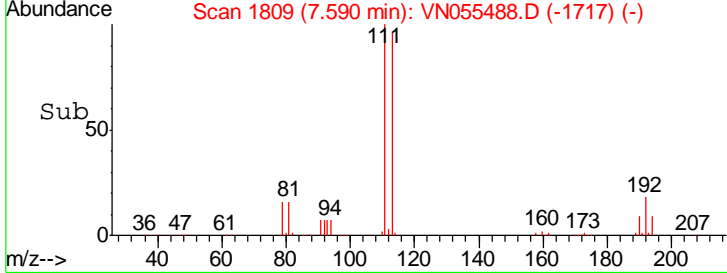
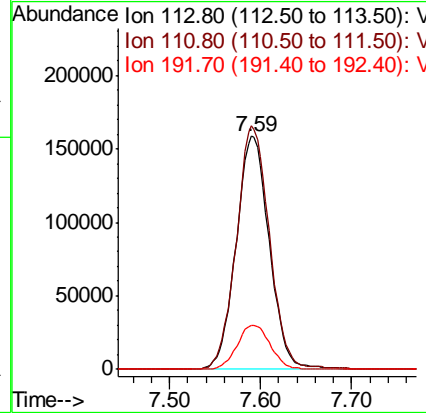
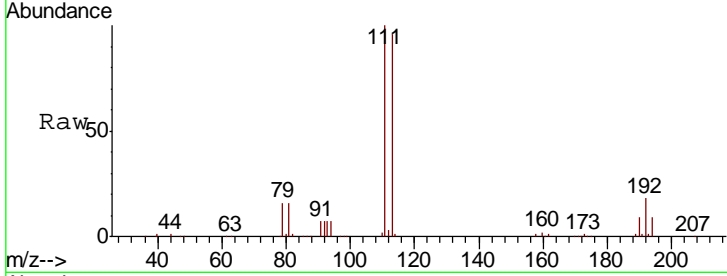




#35
 Dibromofluoromethane
 Concen: 51.469 ug/l
 RT: 7.59 min Scan# 1809
 Delta R.T. -0.00 min
 Lab File: VN055488.D
 Acq: 9 May 2019 11:28

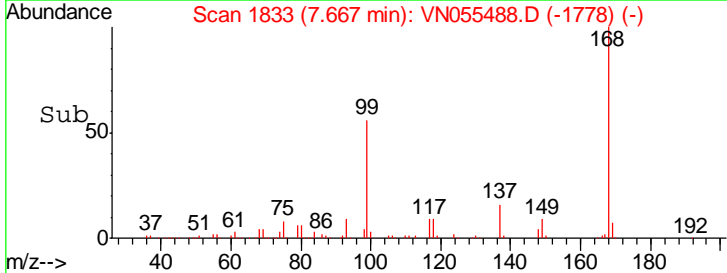
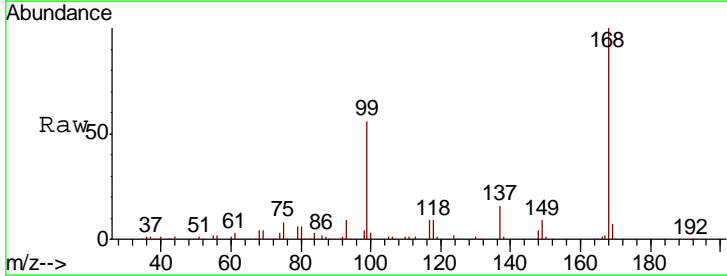
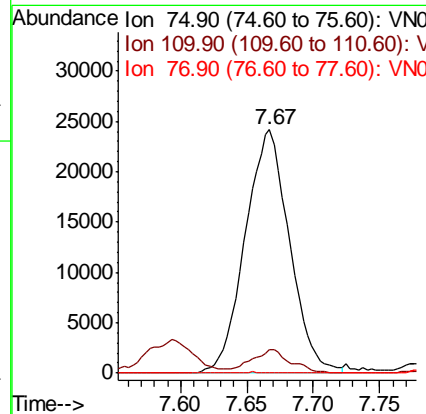
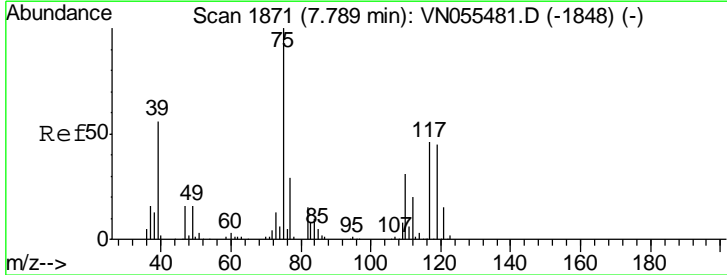
Instrument : MSVOA_N
 ClientSampled : LOD-MDL-WATER-01-QT2-2019

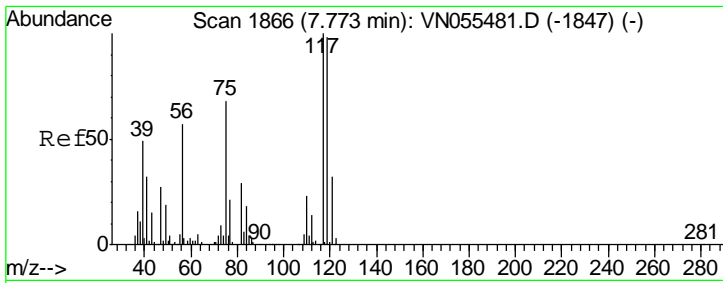
Tgt Ion	Resp	Lower	Upper
113	100		
111	104.1	82.9	124.3
192	19.0	15.6	23.4



#36
 1,1-Dichloropropene
 Concen: 4.706 ug/l
 RT: 7.67 min Scan# 1833
 Delta R.T. -0.12 min
 Lab File: VN055488.D
 Acq: 9 May 2019 11:28

Tgt Ion	Resp	Lower	Upper
75	100		
110	8.4	16.1	48.3#
77	0.1	24.6	37.0#

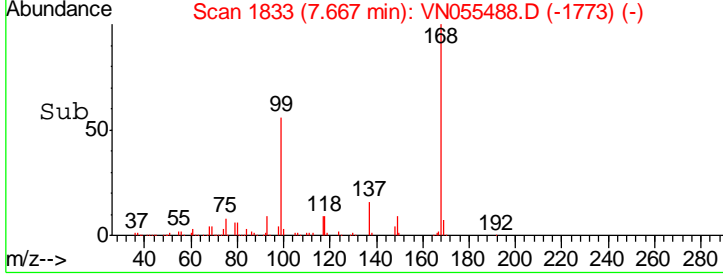
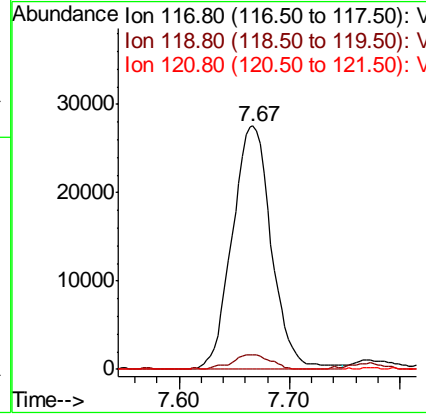
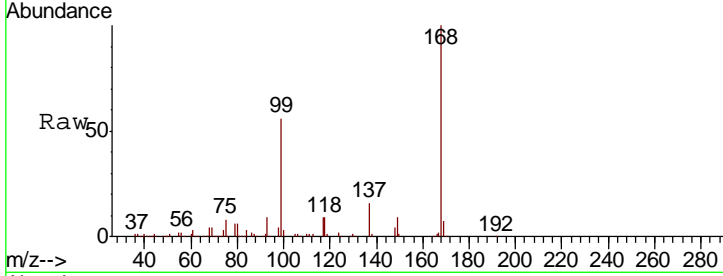




#38
 Carbon Tetrachloride
 Concen: 6.757 ug/l
 RT: 7.67 min Scan# 1833
 Delta R.T. -0.11 min
 Lab File: VN055488.D
 Acq: 9 May 2019 11:28

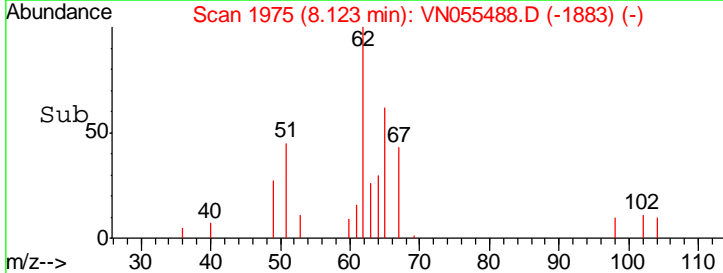
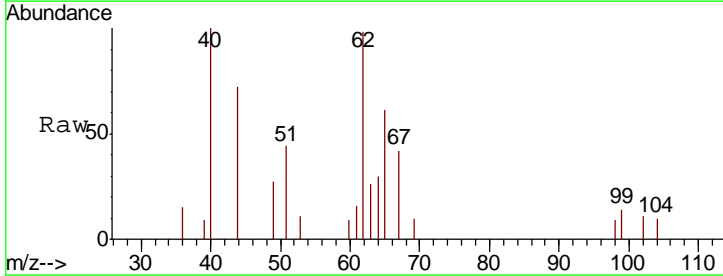
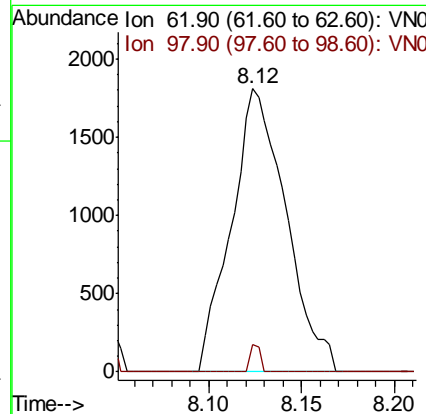
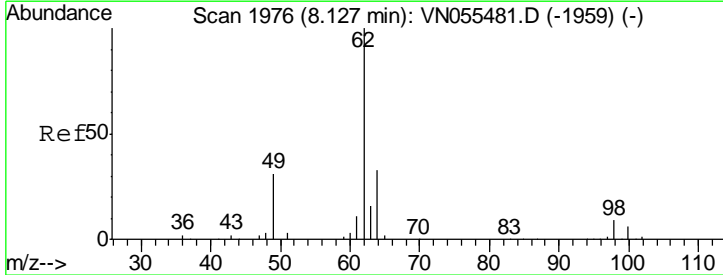
Instrument :
 MSVOA_N
ClientSampled :
 LOD-MDL-WATER-01-QT2-2019

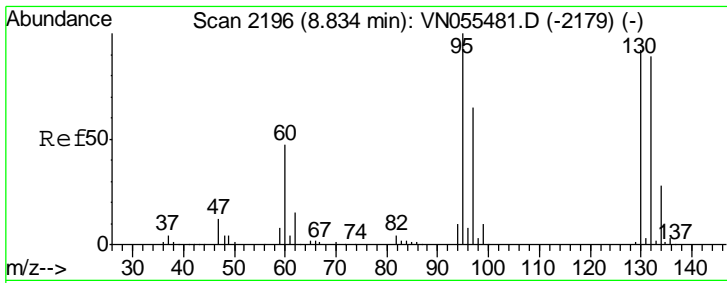
Tgt Ion	Resp	Lower	Upper
117	67914		
119	5.5	77.8	116.6#
121	0.0	25.2	37.8#



#42
 1,2-Dichloroethane
 Concen: 0.285 ug/l
 RT: 8.12 min Scan# 1975
 Delta R.T. -0.00 min
 Lab File: VN055488.D
 Acq: 9 May 2019 11:28

Tgt Ion	Resp	Lower	Upper
62	3708		
62	100		
98	1.7	0.0	17.4



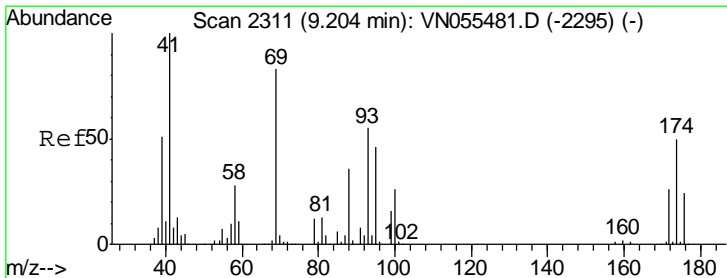
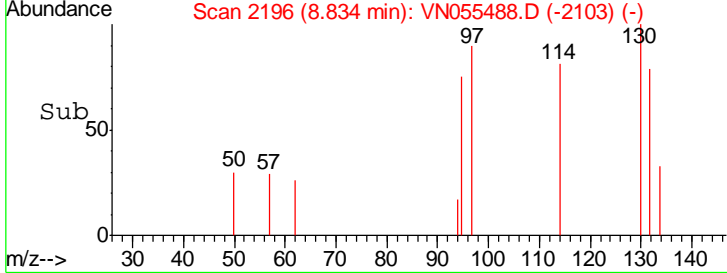
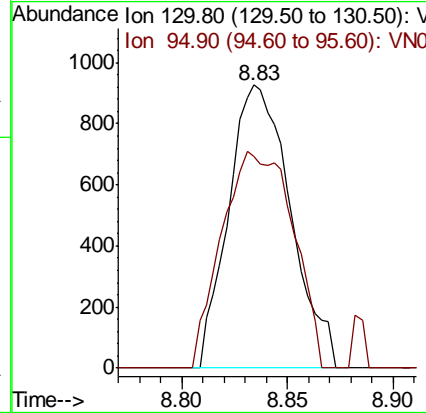
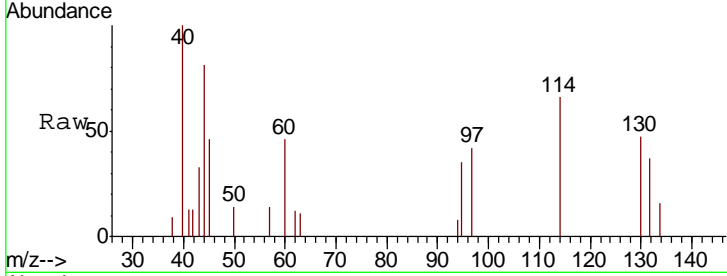


#44
 Trichloroethene
 Concen: 0.215 ug/l
 RT: 8.83 min Scan# 2196
 Delta R.T. -0.00 min
 Lab File: VN055488.D
 Acq: 9 May 2019 11:28

Instrument : MSVOA_N
 ClientSampled : LOD-MDL-WATER-01-QT2-2019

Tgt Ion: 130 Resp: 1892

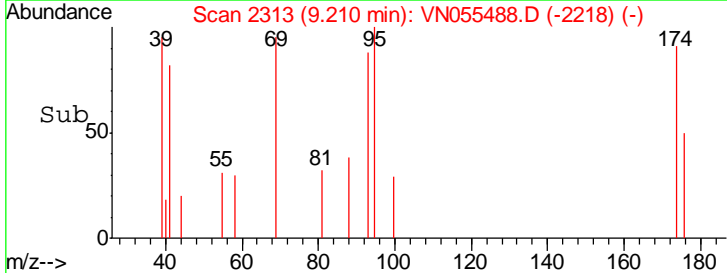
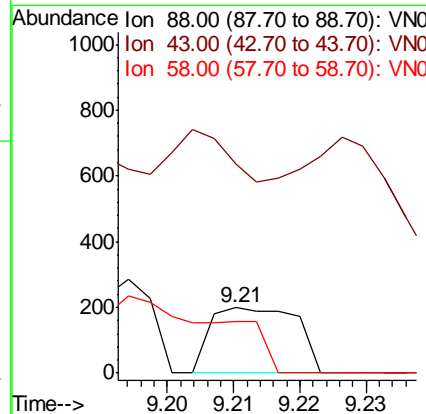
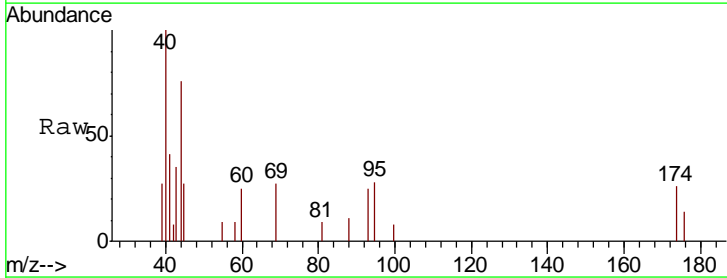
Ion	Ratio	Lower	Upper
130	100		
95	74.9	0.0	216.8

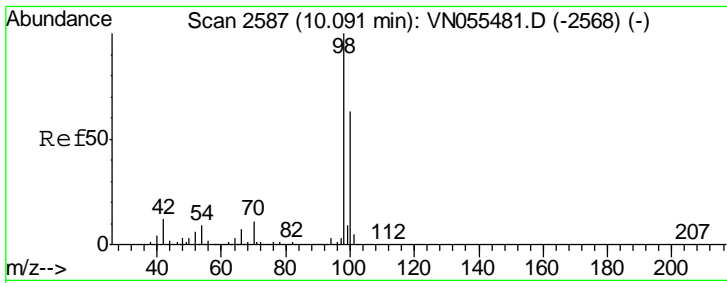


#49
 1,4-Dioxane
 Concen: 0.964 ug/l
 RT: 9.21 min Scan# 2313
 Delta R.T. 0.01 min
 Lab File: VN055488.D
 Acq: 9 May 2019 11:28

Tgt Ion: 88 Resp: 179

Ion	Ratio	Lower	Upper
88	100		
43	112.8	27.8	41.8#
58	0.0	61.8	92.6#

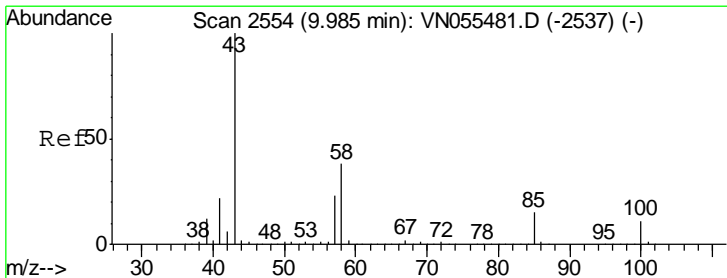
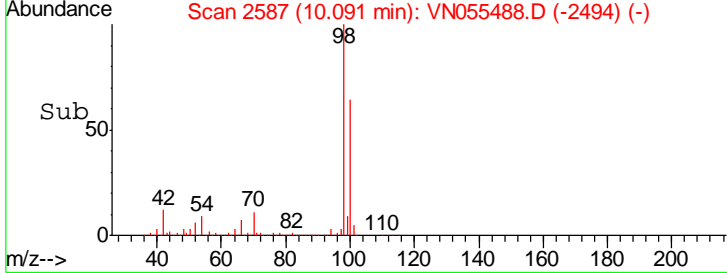
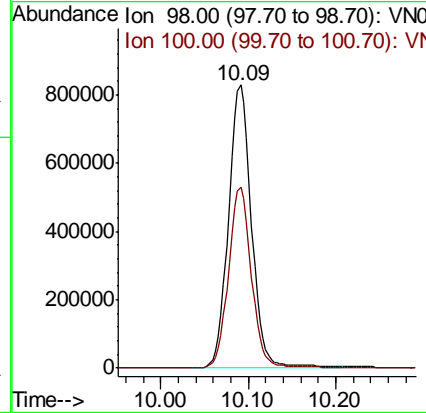
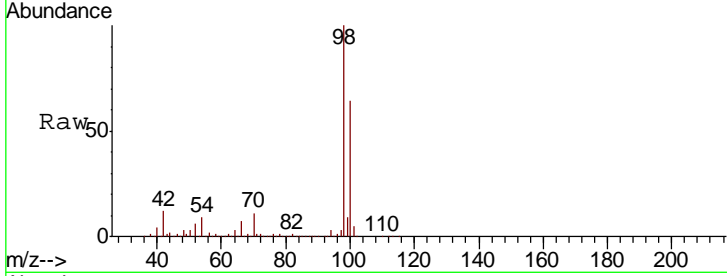




#50
 Toluene-d8
 Concen: 49.807 ug/l
 RT: 10.09 min Scan# 2587
 Delta R.T. -0.00 min
 Lab File: VN055488.D
 Acq: 9 May 2019 11:28

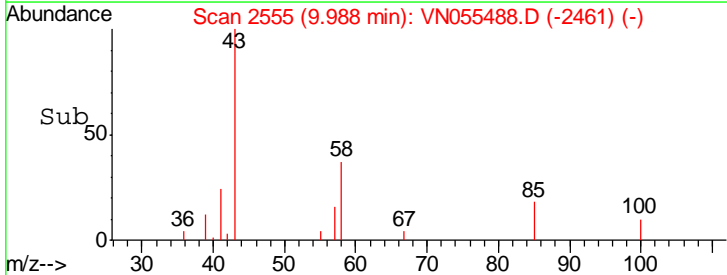
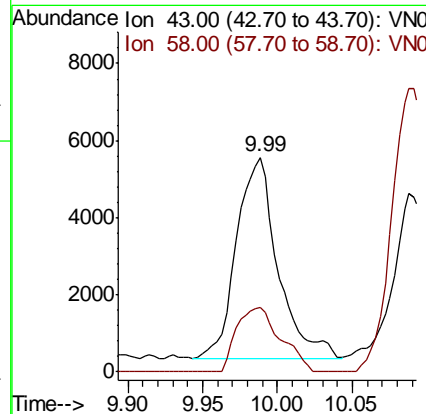
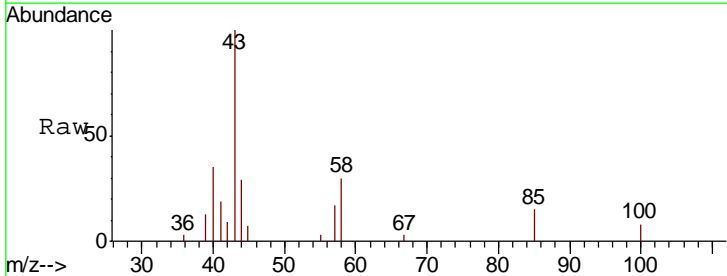
Instrument : MSVOA_N
 ClientSampled : LOD-MDL-WATER-01-QT2-2019

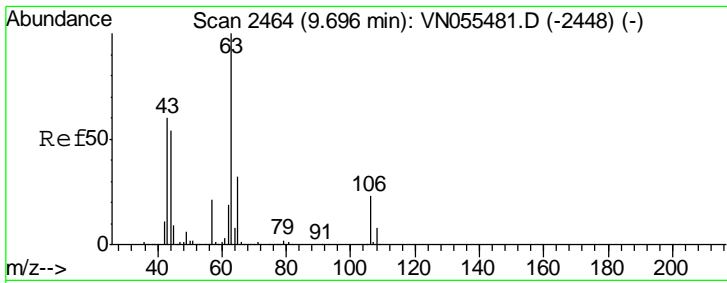
Tgt Ion: 98 Resp: 1517067
 Ion Ratio Lower Upper
 98 100
 100 63.2 50.4 75.6



#51
 4-Methyl-2-Pentanone
 Concen: 0.773 ug/l
 RT: 9.99 min Scan# 2555
 Delta R.T. 0.00 min
 Lab File: VN055488.D
 Acq: 9 May 2019 11:28

Tgt Ion: 43 Resp: 10061
 Ion Ratio Lower Upper
 43 100
 58 34.1 29.9 44.9

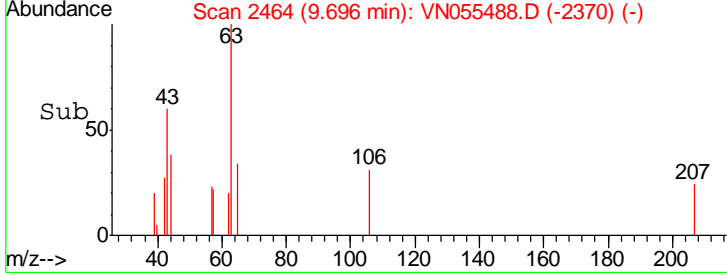
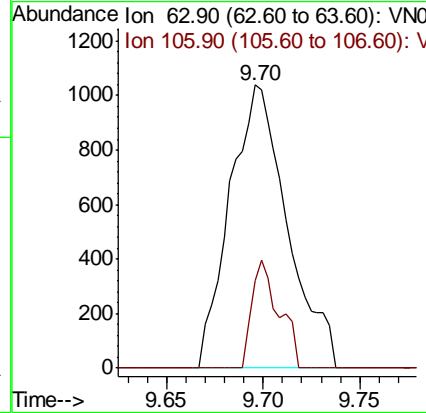
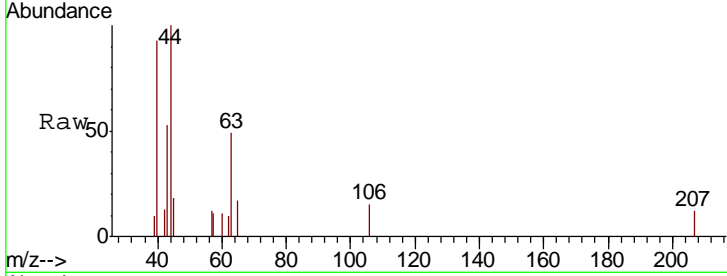




#58
 2-Chloroethyl Vinyl ether
 Concen: 12.987 ug/l
 RT: 9.70 min Scan# 2464
 Delta R.T. 0.00 min
 Lab File: VN055488.D
 Acq: 9 May 2019 11:28

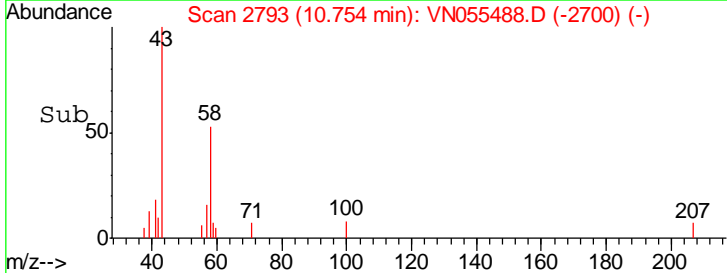
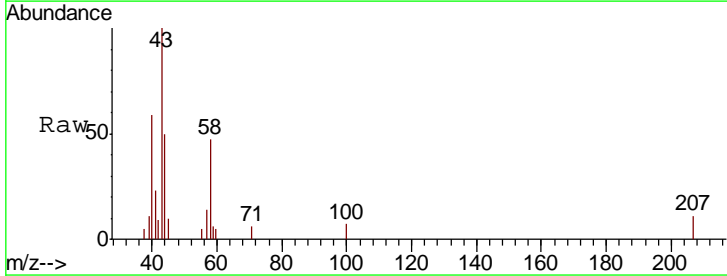
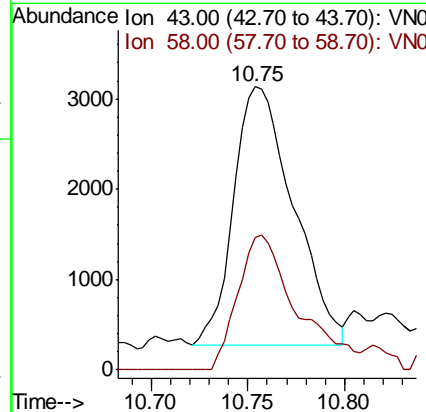
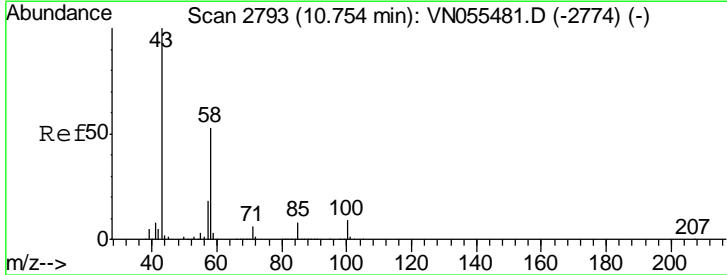
Instrument :
 MSVOA_N
ClientSampled :
 LOD-MDL-WATER-01-QT2-2019

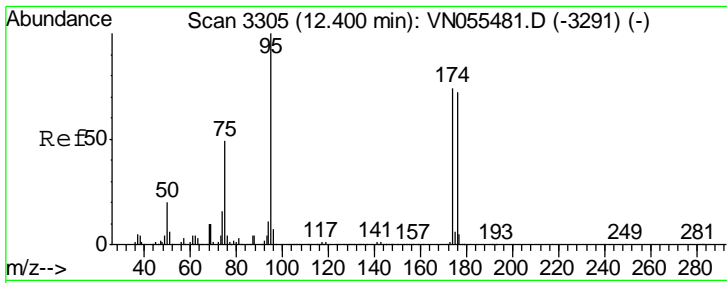
Tgt Ion: 63 Resp: 2148
 Ion Ratio Lower Upper
 63 100
 106 17.8 18.6 27.8#



#59
 2-Hexanone
 Concen: 0.674 ug/l
 RT: 10.75 min Scan# 2793
 Delta R.T. -0.00 min
 Lab File: VN055488.D
 Acq: 9 May 2019 11:28

Tgt Ion: 43 Resp: 6153
 Ion Ratio Lower Upper
 43 100
 58 52.2 26.4 79.0

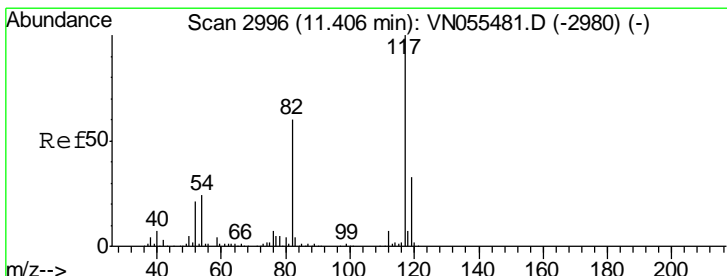
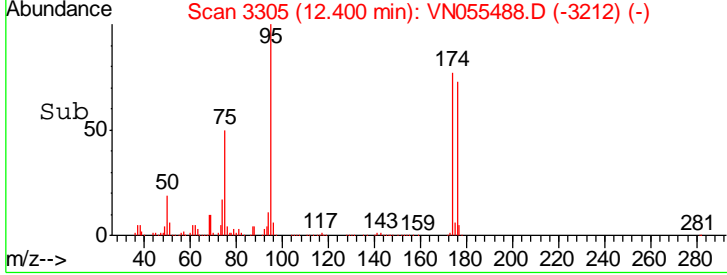
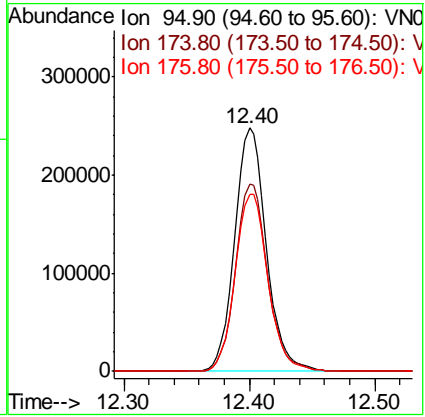
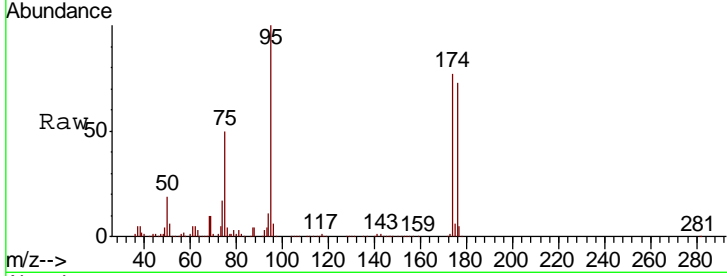




#62
 4-Bromofluorobenzene
 Concen: 42.309 ug/l
 RT: 12.40 min Scan# 3305
 Delta R.T. -0.00 min
 Lab File: VN055488.D
 Acq: 9 May 2019 11:28

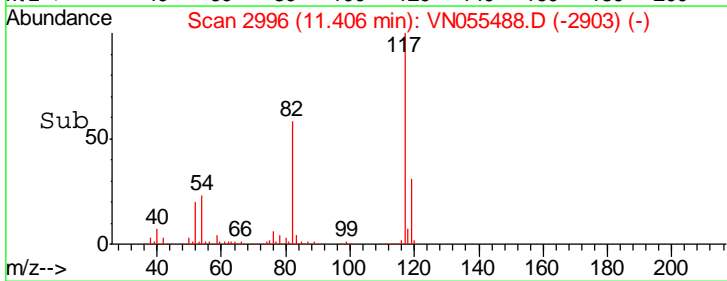
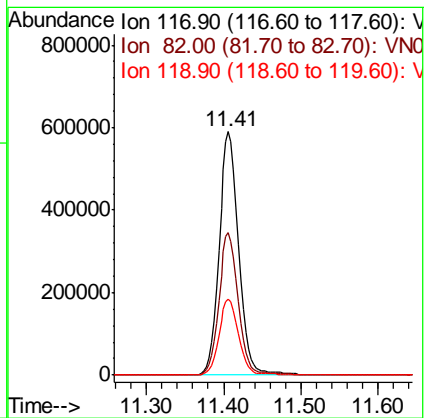
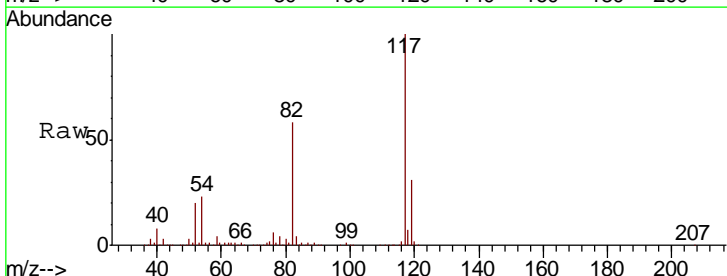
Instrument : MSVOA_N
 ClientSampled : LOD-MDL-WATER-01-QT2-2019

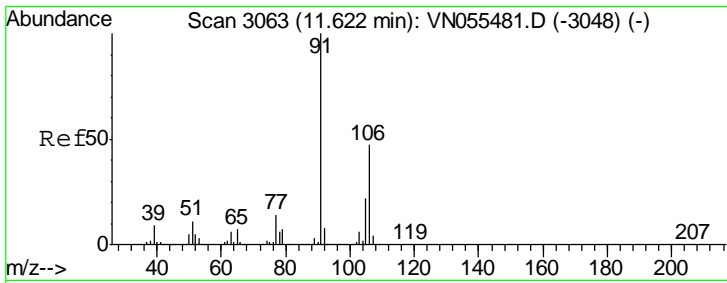
Tgt Ion	Resp	Lower	Upper
95	434526		
174	78.4	0.0	152.2
176	75.5	0.0	147.8



#63
 Chlorobenzene-d5
 Concen: 50.000 ug/l
 RT: 11.41 min Scan# 2996
 Delta R.T. -0.00 min
 Lab File: VN055488.D
 Acq: 9 May 2019 11:28

Tgt Ion	Resp	Lower	Upper
117	1042876		
82	58.4	48.0	72.0
119	31.4	26.0	39.0

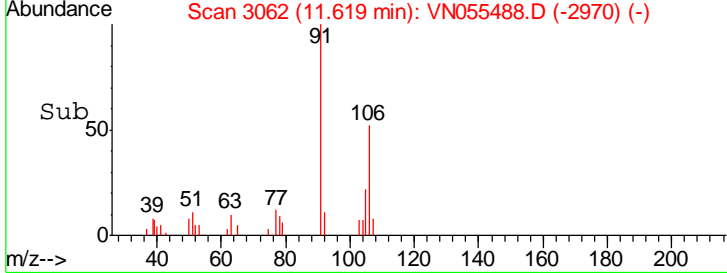
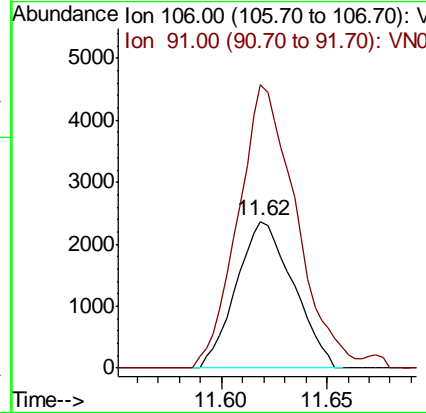
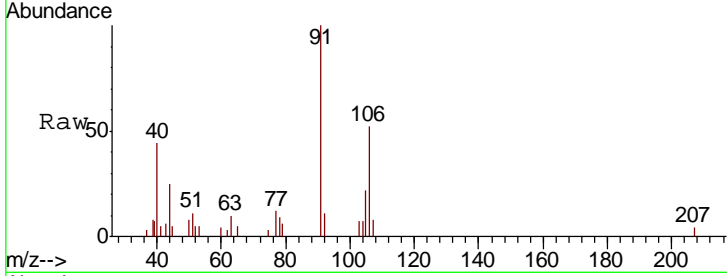




#68
 m/p-Xylenes
 Concen: 0.307 ug/l
 RT: 11.62 min Scan# 3062
 Delta R.T. -0.00 min
 Lab File: VN055488.D
 Acq: 9 May 2019 11:28

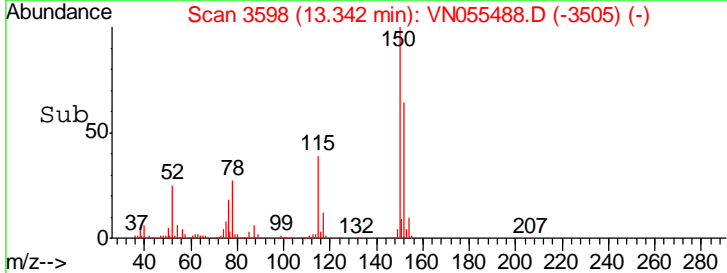
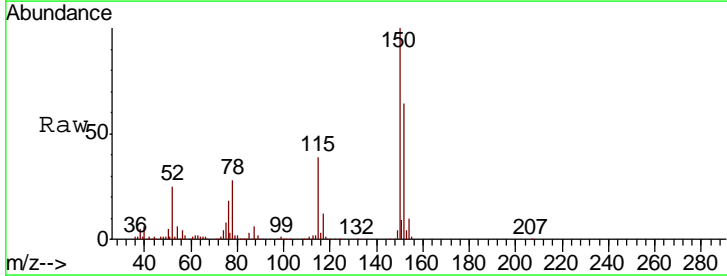
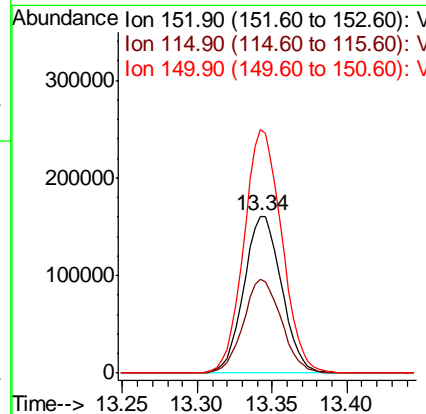
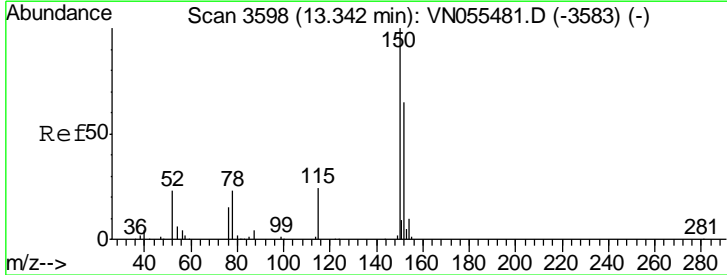
Instrument : MSVOA_N
 Client Sampled : LOD-MDL-WATER-01-QT2-2019

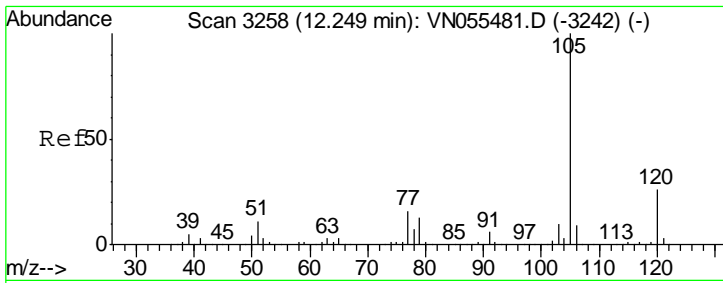
Tgt Ion	Resp	Lower	Upper
106	4437		
91	197.5	169.2	253.8



#72
 1,4-Dichlorobenzene-d4
 Concen: 50.000 ug/l
 RT: 13.34 min Scan# 3598
 Delta R.T. -0.00 min
 Lab File: VN055488.D
 Acq: 9 May 2019 11:28

Tgt Ion	Resp	Lower	Upper
152	282771		
115	60.2	30.1	90.5
150	156.3	0.0	355.0

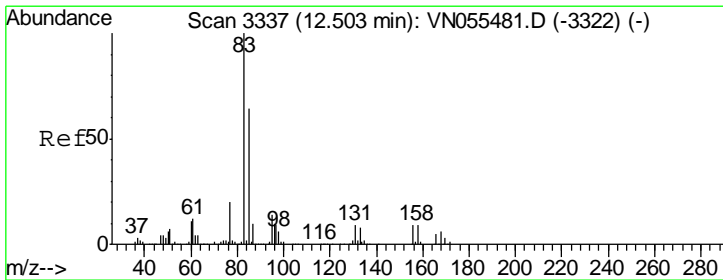
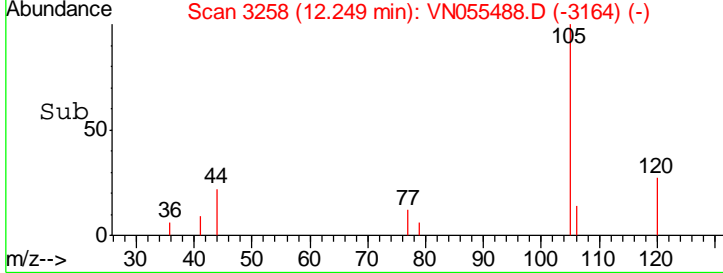
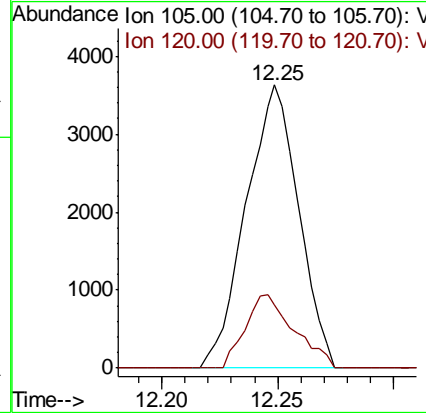
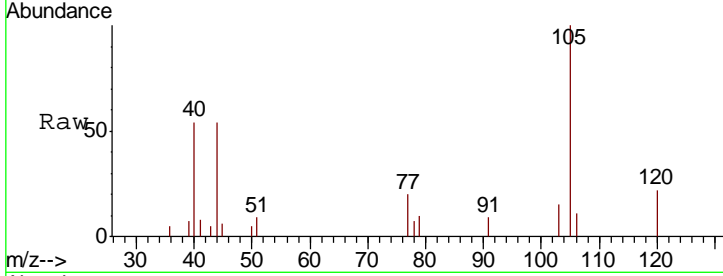




#73
 Isopropylbenzene
 Concen: Below Cal
 RT: 12.25 min Scan# 3258
 Delta R.T. 0.00 min
 Lab File: VN055488.D
 Acq: 9 May 2019 11:28

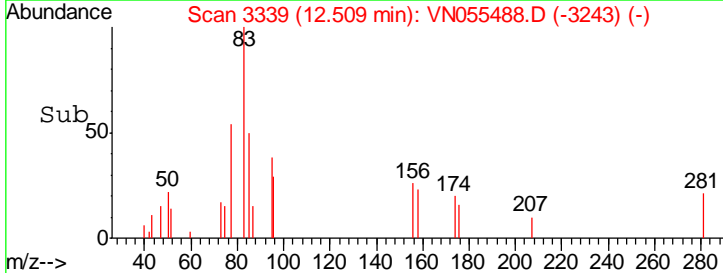
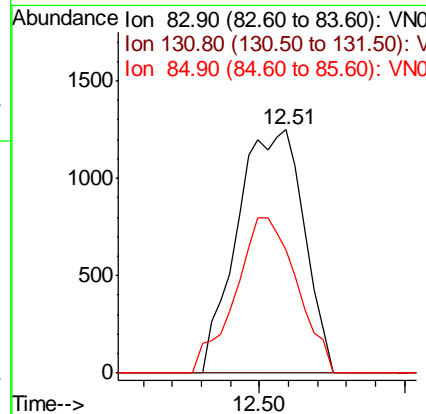
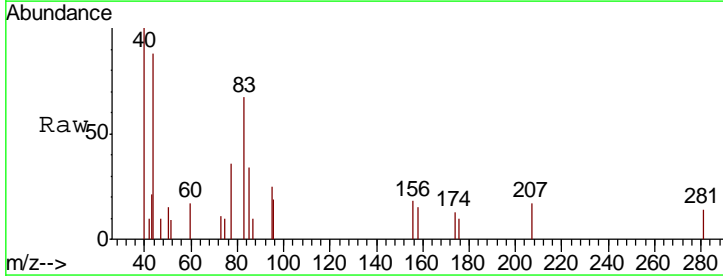
Instrument : MSVOA_N
 ClientSampled : LOD-MDL-WATER-01-QT2-2019

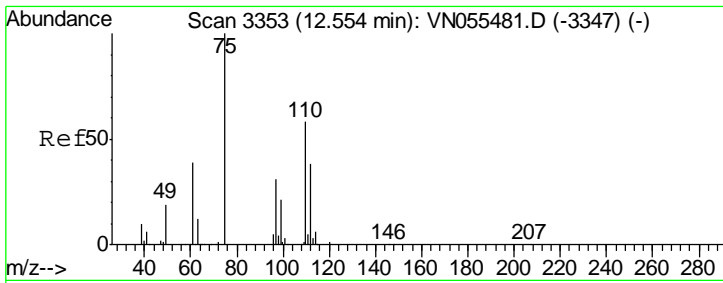
Tgt Ion	Resp	Lower	Upper
105	100		
120	24.1	13.0	39.0



#75
 1,1,2,2-Tetrachloroethane
 Concen: Below Cal
 RT: 12.51 min Scan# 3339
 Delta R.T. 0.01 min
 Lab File: VN055488.D
 Acq: 9 May 2019 11:28

Tgt Ion	Resp	Lower	Upper
83	100		
131	0.0	4.5	13.5#
85	58.9	32.0	96.0

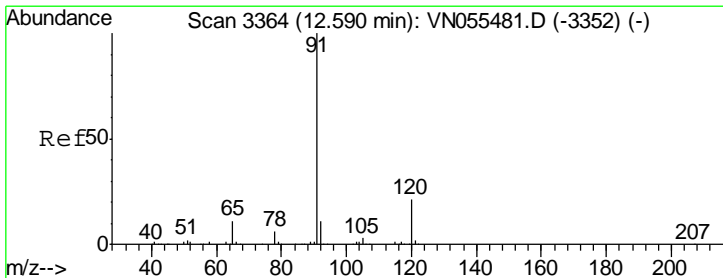
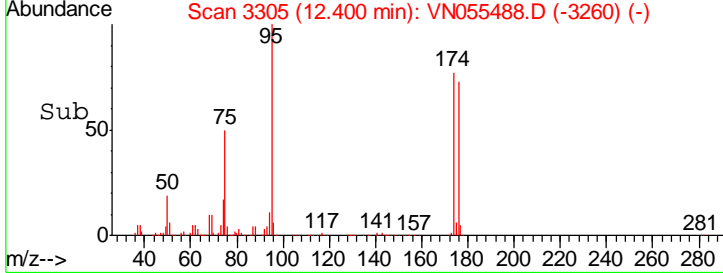
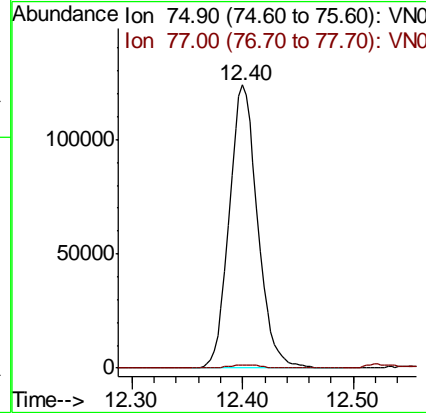
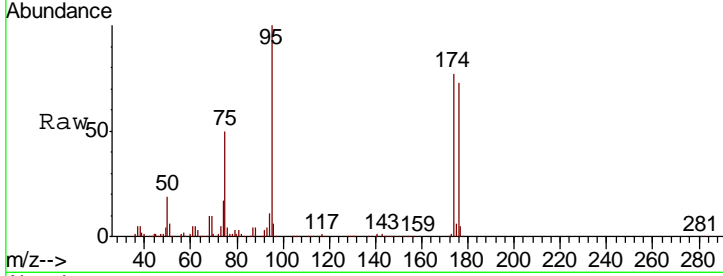




#76
 1,2,3-Trichloropropane
 Concen: 28.679 ug/l
 RT: 12.40 min Scan# 3305
 Delta R.T. -0.15 min
 Lab File: VN055488.D
 Acq: 9 May 2019 11:28

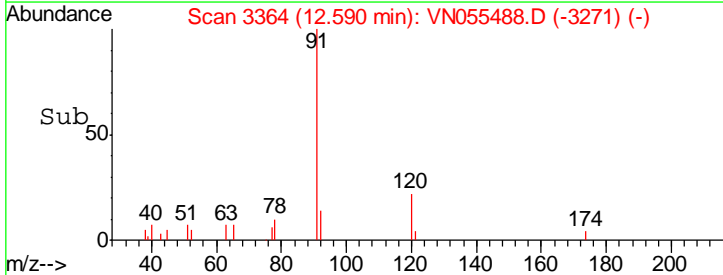
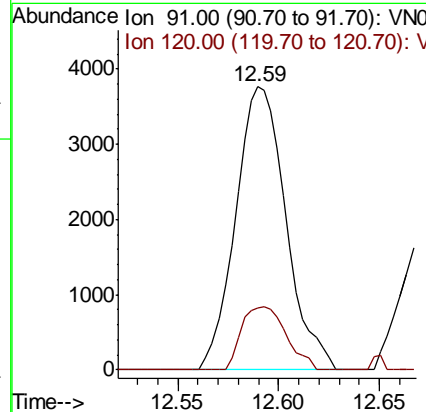
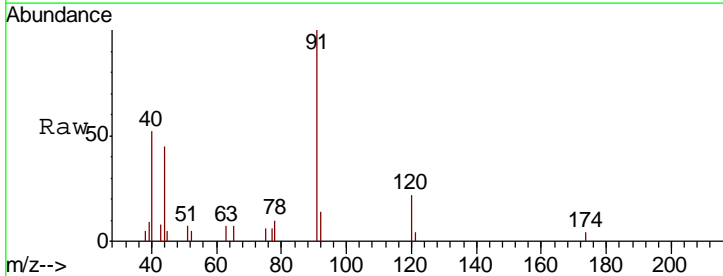
Instrument : MSVOA_N
 ClientSampled : LOD-MDL-WATER-01-QT2-2019

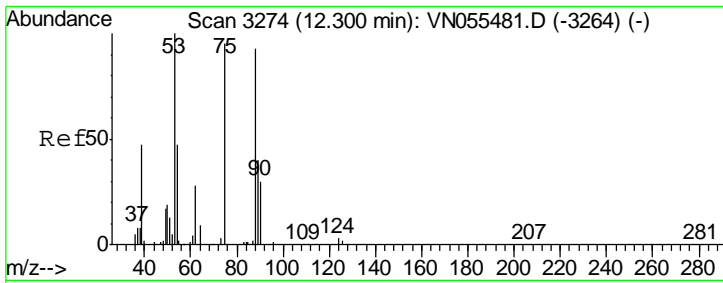
Tgt Ion: 75 Resp: 220773
 Ion Ratio Lower Upper
 75 100
 77 1.3 0.0 0.0#



#78
 n-propylbenzene
 Concen: 0.216 ug/l
 RT: 12.59 min Scan# 3364
 Delta R.T. -0.00 min
 Lab File: VN055488.D
 Acq: 9 May 2019 11:28

Tgt Ion: 91 Resp: 6549
 Ion Ratio Lower Upper
 91 100
 120 19.9 10.8 32.3

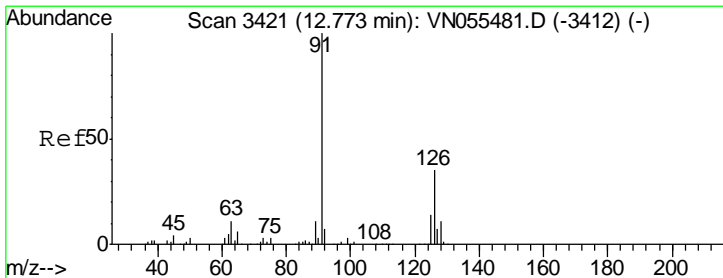
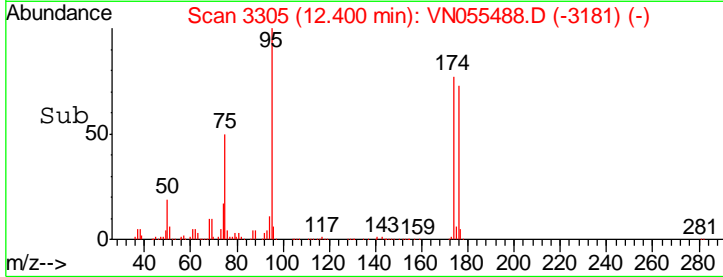
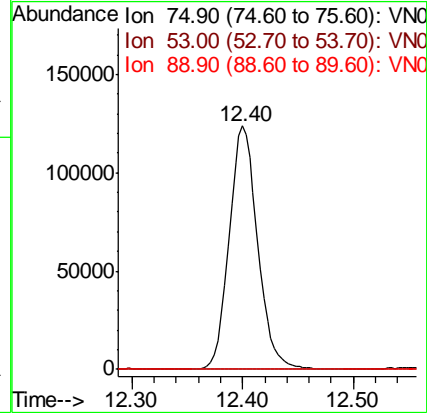
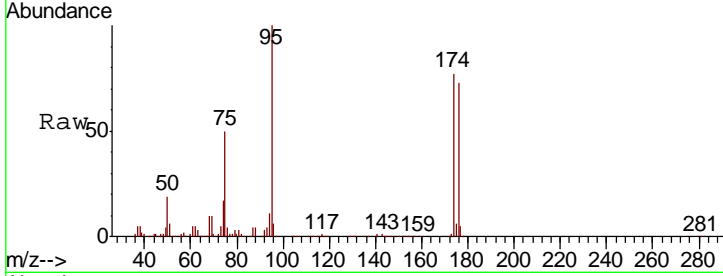




#81
 trans-1,4-Dichloro-2-butene
 Concen: 105.823 ug/l
 RT: 12.40 min Scan# 3305
 Delta R.T. 0.10 min
 Lab File: VN055488.D
 Acq: 9 May 2019 11:28

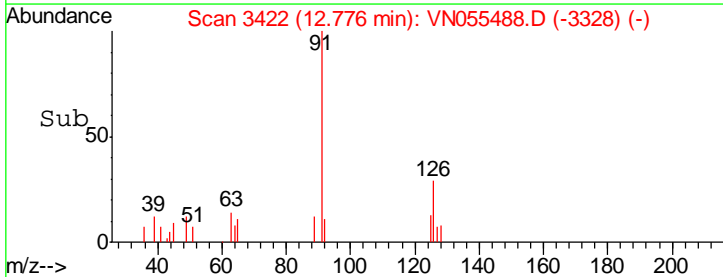
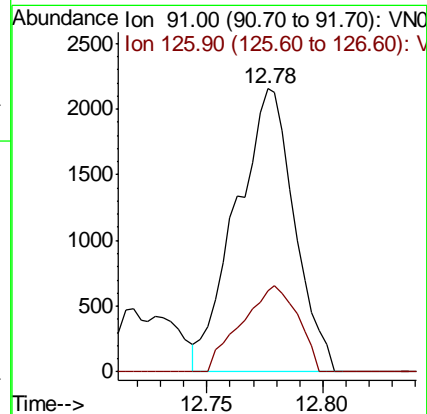
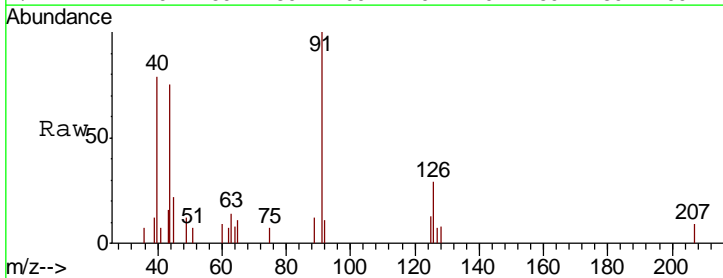
Instrument : MSVOA_N
 ClientSampled : LOD-MDL-WATER-01-QT2-2019

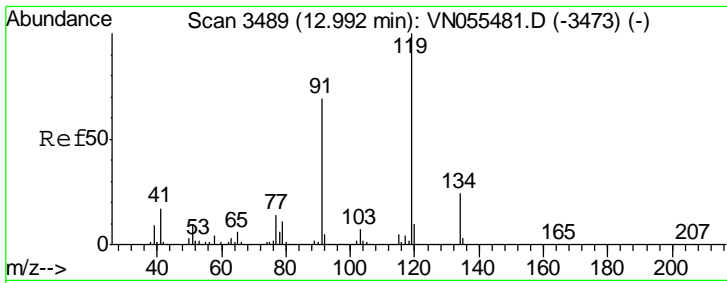
Tgt Ion	Resp	Lower	Upper
75	100		
53	0.1	86.5	129.7#
89	0.0	35.7	53.5#



#82
 4-Chlorotoluene
 Concen: 0.211 ug/l
 RT: 12.78 min Scan# 3422
 Delta R.T. 0.00 min
 Lab File: VN055488.D
 Acq: 9 May 2019 11:28

Tgt Ion	Resp	Lower	Upper
91	100		
126	29.4	15.7	47.0

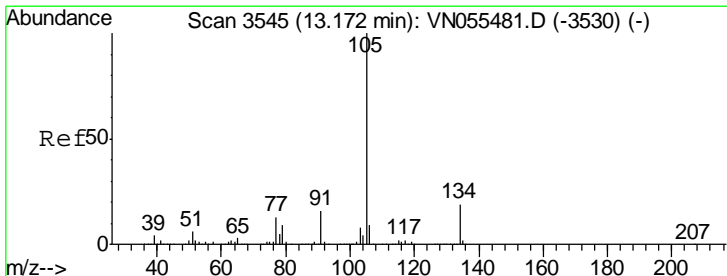
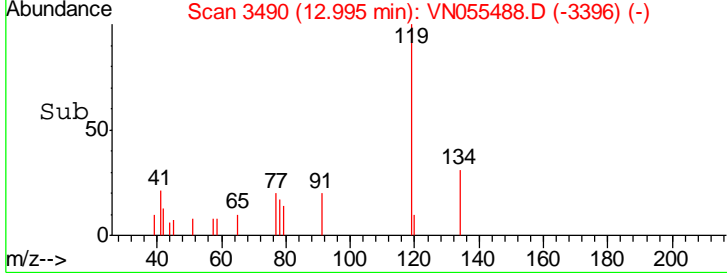
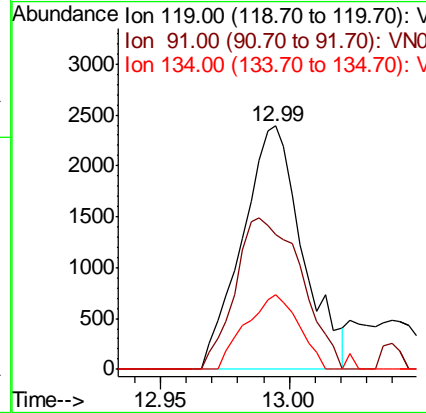
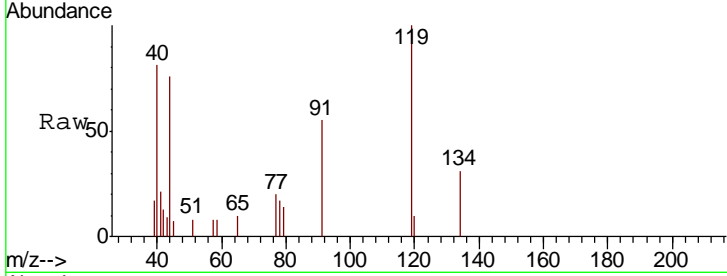




#83
 tert-Butylbenzene
 Concen: 0.202 ug/l
 RT: 12.99 min Scan# 3490
 Delta R.T. 0.00 min
 Lab File: VN055488.D
 Acq: 9 May 2019 11:28

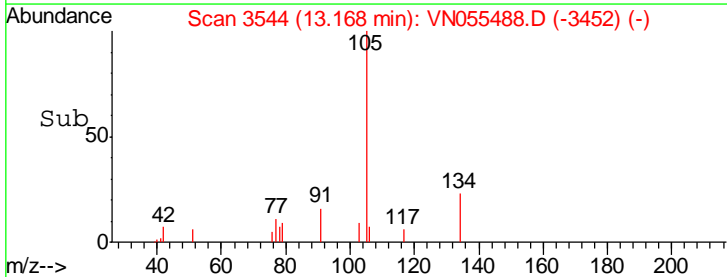
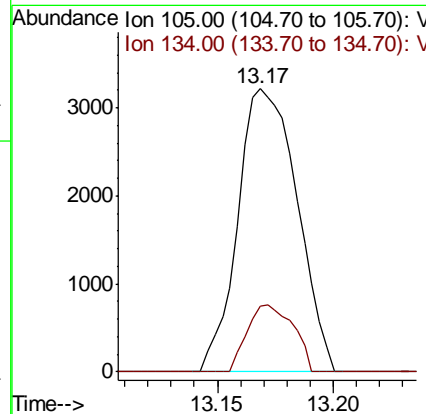
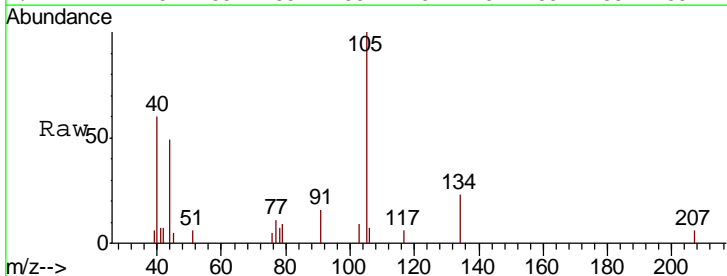
Instrument : MSVOA_N
 ClientSampled : LOD-MDL-WATER-01-QT2-2019

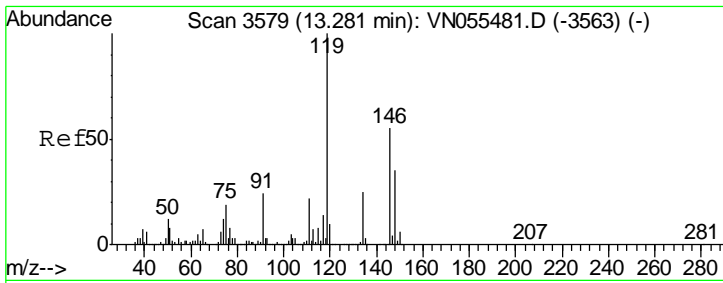
Tgt Ion	Resp	Lower	Upper
119	3906		
91	68.1	33.8	101.3
134	26.8	12.5	37.5



#85
 sec-Butylbenzene
 Concen: 0.221 ug/l
 RT: 13.17 min Scan# 3544
 Delta R.T. -0.00 min
 Lab File: VN055488.D
 Acq: 9 May 2019 11:28

Tgt Ion	Resp	Lower	Upper
105	5706		
134	18.3	9.3	28.0

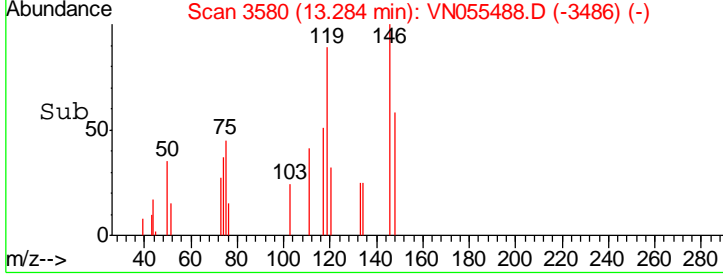
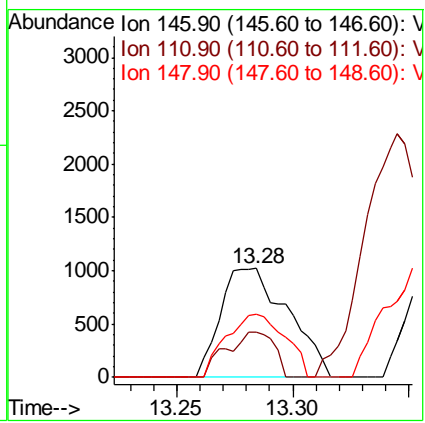
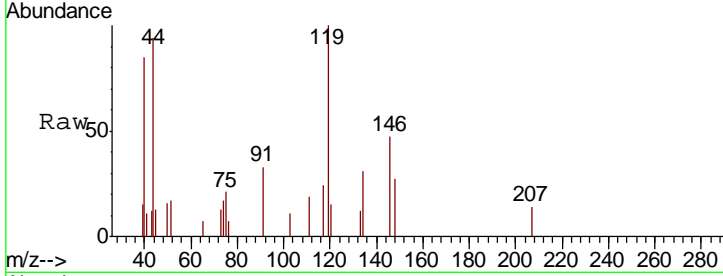




#87
 1,3-Dichlorobenzene
 Concen: 0.214 ug/l
 RT: 13.28 min Scan# 3580
 Delta R.T. 0.00 min
 Lab File: VN055488.D
 Acq: 9 May 2019 11:28

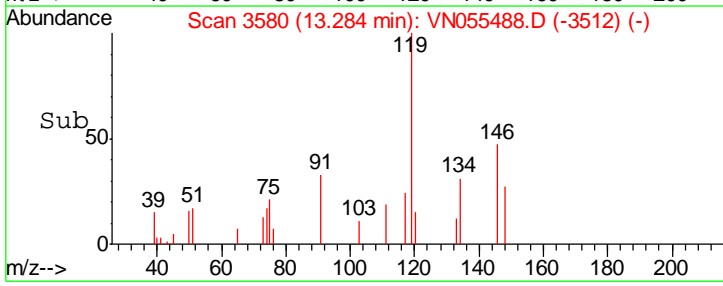
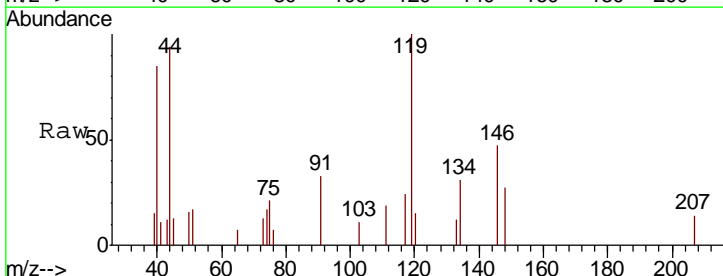
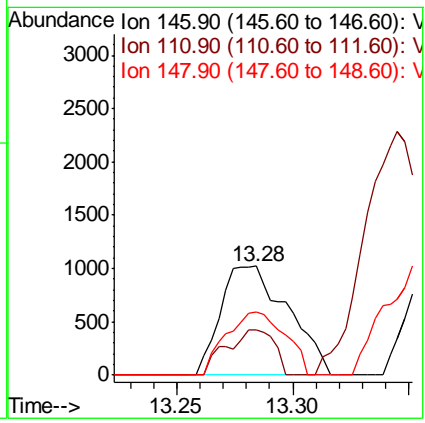
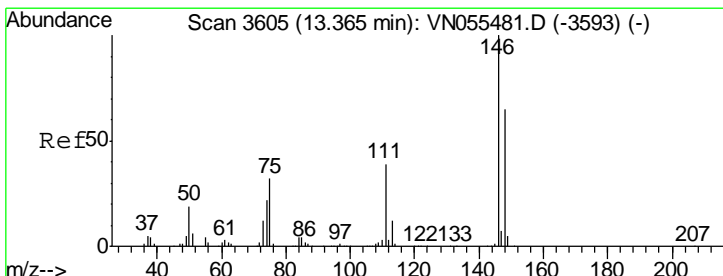
Instrument : MSVOA_N
 ClientSampled : LOD-MDL-WATER-01-QT2-2019

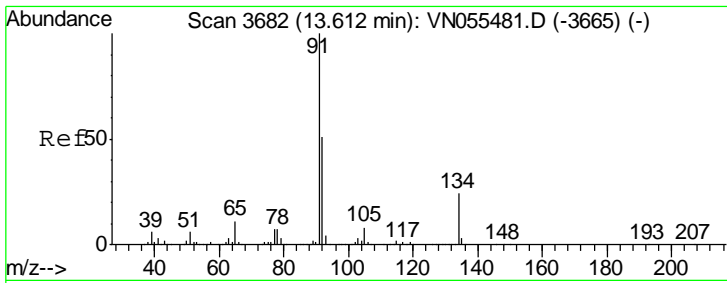
Tgt Ion:146	Resp:	2061
Ion Ratio	Lower	Upper
146	100	
111	29.4	20.4 61.3
148	50.4	32.1 96.5



#88
 1,4-Dichlorobenzene
 Concen: 0.217 ug/l
 RT: 13.28 min Scan# 3580
 Delta R.T. -0.08 min
 Lab File: VN055488.D
 Acq: 9 May 2019 11:28

Tgt Ion:146	Resp:	2061
Ion Ratio	Lower	Upper
146	100	
111	29.4	19.6 58.8
148	50.4	32.5 97.4

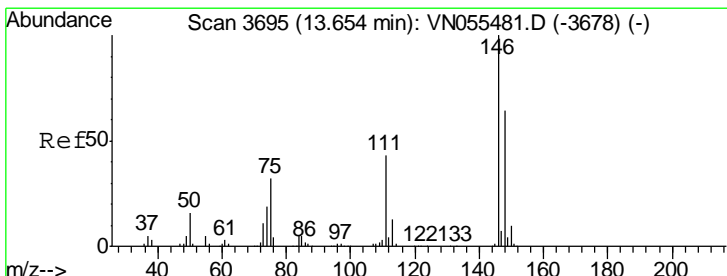
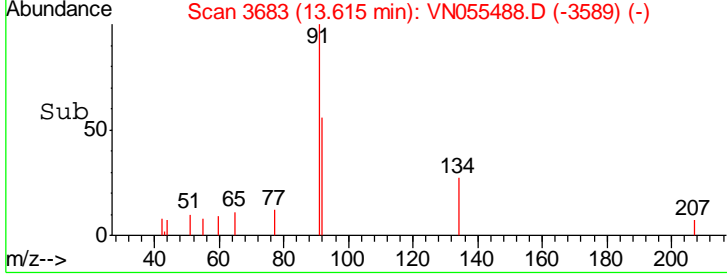
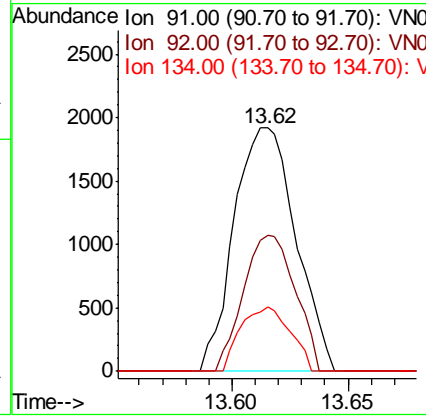
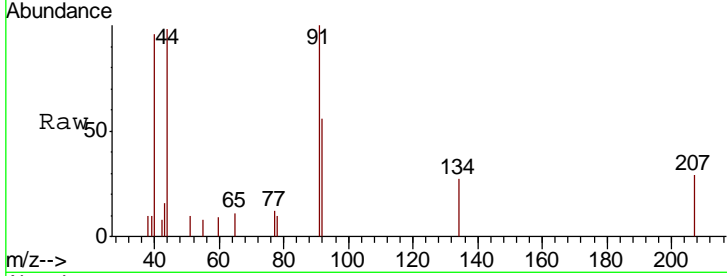




#89
 n-Butylbenzene
 Concen: 0.218 ug/l
 RT: 13.62 min Scan# 3683
 Delta R.T. 0.00 min
 Lab File: VN055488.D
 Acq: 9 May 2019 11:28

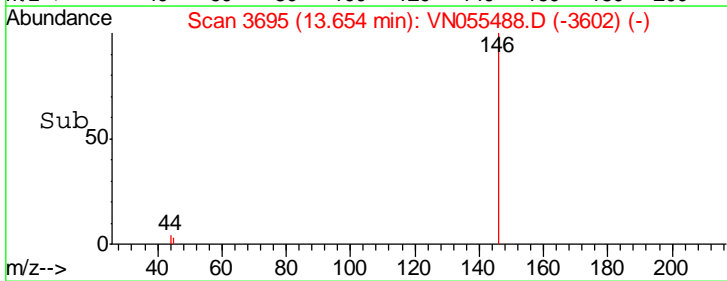
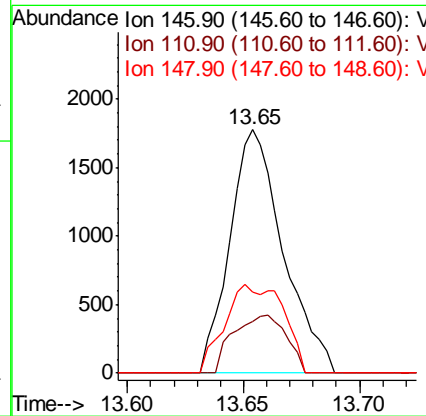
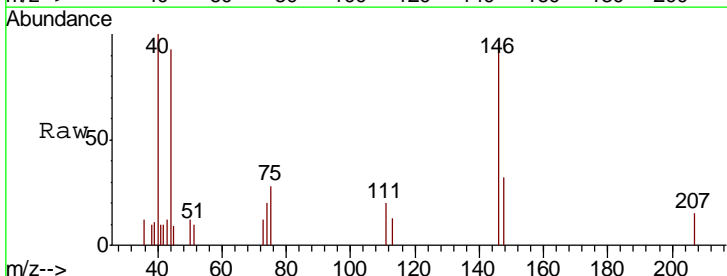
Instrument :
 MSVOA_N
ClientSampled :
 LOD-MDL-WATER-01-QT2-2019

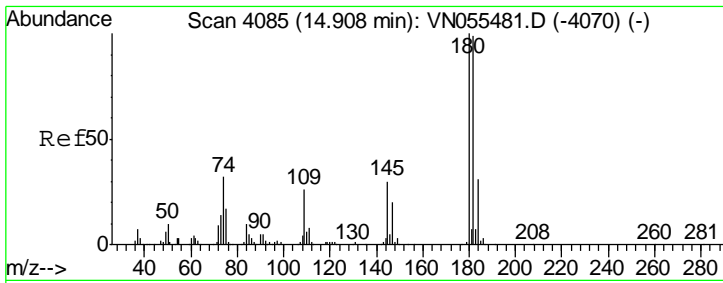
Tgt Ion	Resp	Lower	Upper
91	100		
92	47.0	25.9	77.7
134	21.1	11.8	35.4



#91
 1,2-Dichlorobenzene
 Concen: 0.295 ug/l
 RT: 13.65 min Scan# 3695
 Delta R.T. -0.00 min
 Lab File: VN055488.D
 Acq: 9 May 2019 11:28

Tgt Ion	Resp	Lower	Upper
146	100		
111	23.6	21.3	63.7
148	39.8	31.9	95.9

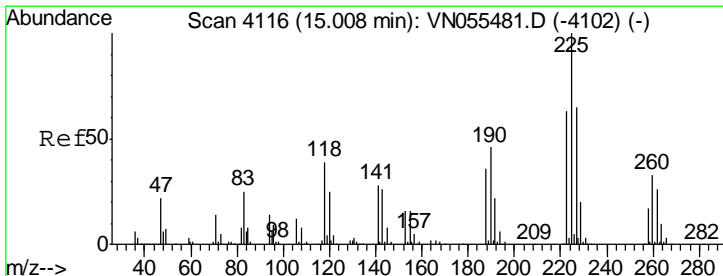
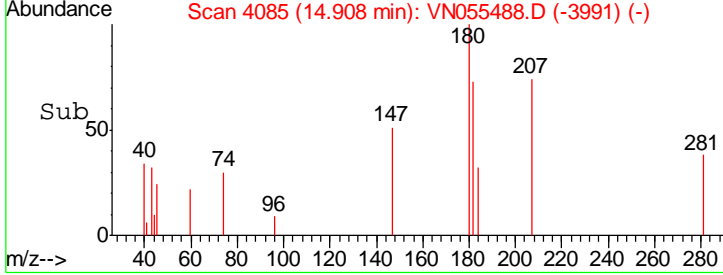
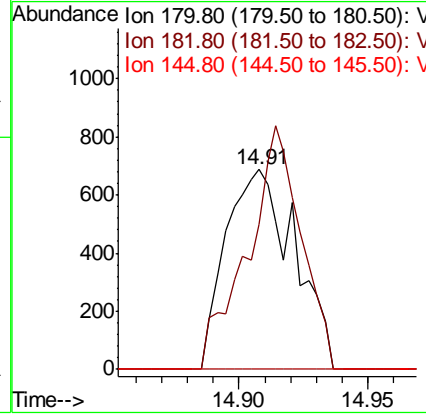
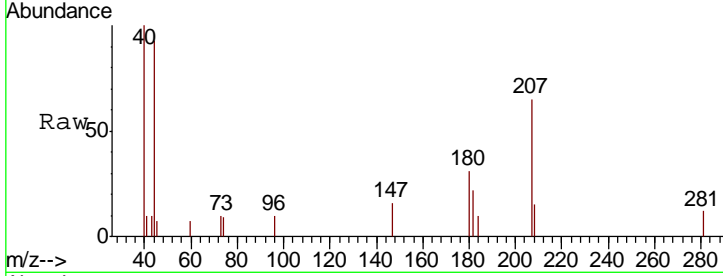




#93
 1,2,4-Trichlorobenzene
 Concen: 3.489 ug/l
 RT: 14.91 min Scan# 4085
 Delta R.T. 0.00 min
 Lab File: VN055488.D
 Acq: 9 May 2019 11:28

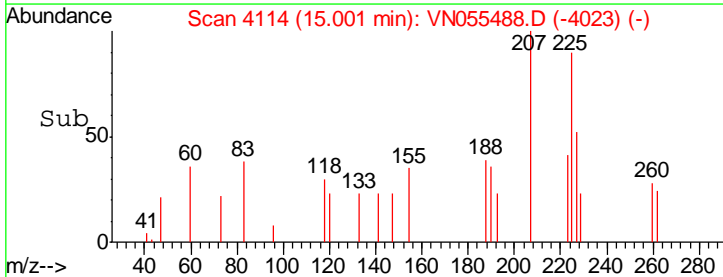
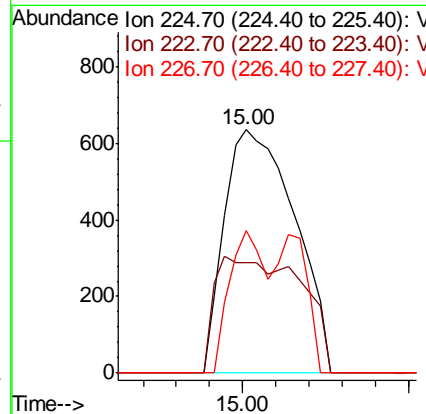
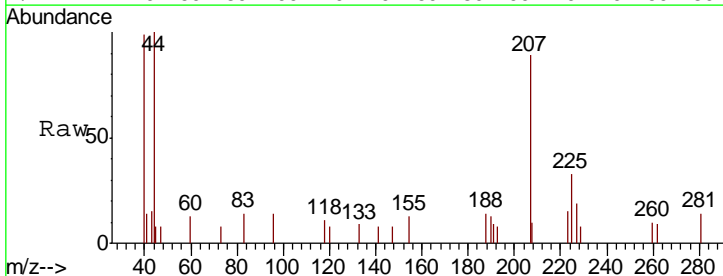
Instrument : MSVOA_N
 ClientSampled : LOD-MDL-WATER-01-QT2-2019

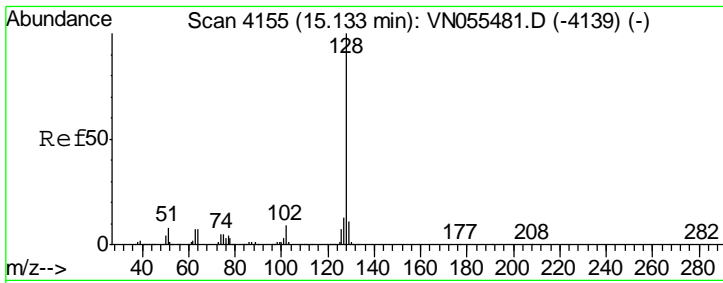
Tgt Ion	Resp	Lower	Upper
180	1272		
182	95.3	48.7	146.1
145	0.0	15.3	45.9#



#94
 Hexachlorobutadiene
 Concen: Below Cal
 RT: 15.00 min Scan# 4114
 Delta R.T. -0.01 min
 Lab File: VN055488.D
 Acq: 9 May 2019 11:28

Tgt Ion	Resp	Lower	Upper
225	941		
223	58.1	31.4	94.3
227	29.3	32.0	96.0#

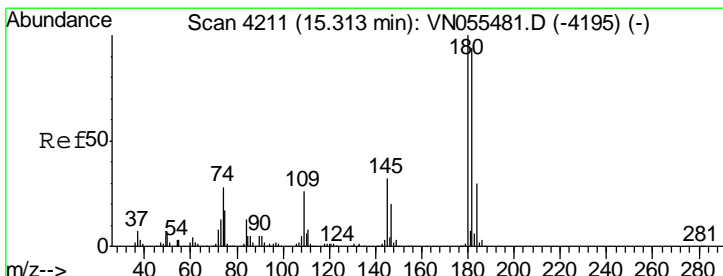
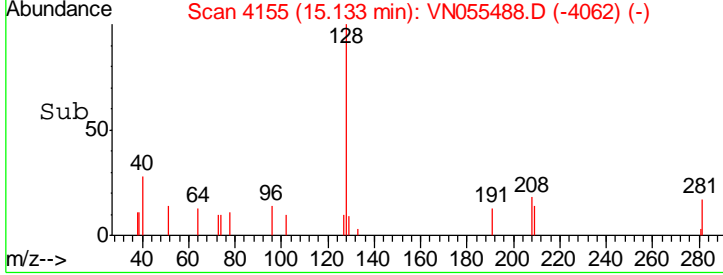
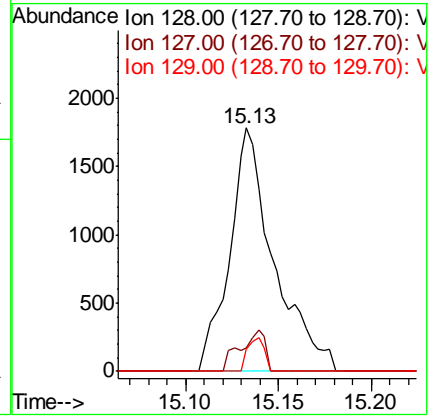
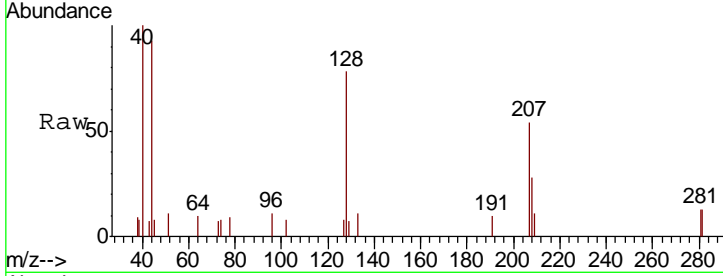




#95
 Naphthalene
 Concen: 3.172 ug/l
 RT: 15.13 min Scan# 4155
 Delta R.T. -0.00 min
 Lab File: VN055488.D
 Acq: 9 May 2019 11:28

Instrument :
 MSVOA_N
ClientSampled :
 LOD-MDL-WATER-01-QT2-2019

Tgt Ion	Resp	Lower	Upper
128	100		
127	9.6	10.0	15.0#
129	5.3	8.8	13.2#



#96
 1,2,3-Trichlorobenzene
 Concen: 2.554 ug/l
 RT: 15.31 min Scan# 4210
 Delta R.T. -0.00 min
 Lab File: VN055488.D
 Acq: 9 May 2019 11:28

Tgt Ion	Resp	Lower	Upper
180	100		
182	220.2	47.1	141.3#
145	36.9	15.8	47.4

