

Data Path : Z:\voasrv\HPCHEM1\MSVOA_N\Data\VN050924\
 Data File : VN082052.D
 Acq On : 09 May 2024 15:46
 Operator : JC\MD
 Sample : PB160759ZHE#04
 Misc : 5.0mL/MSVOA_N/WATER
 ALS Vial : 15 Sample Multiplier: 1

Instrument :
 MSVOA_N
 ClientSampleId :

Quant Time: May 10 03:52:43 2024
 Quant Method : Z:\voasrv\HPCHEM1\MSVOA_N\methods\82N042524W.M
 Quant Title : SW846 8260
 QLast Update : Fri Apr 26 05:26:49 2024
 Response via : Initial Calibration

Compound	R.T.	QIon	Response	Conc	Units	Dev(Min)

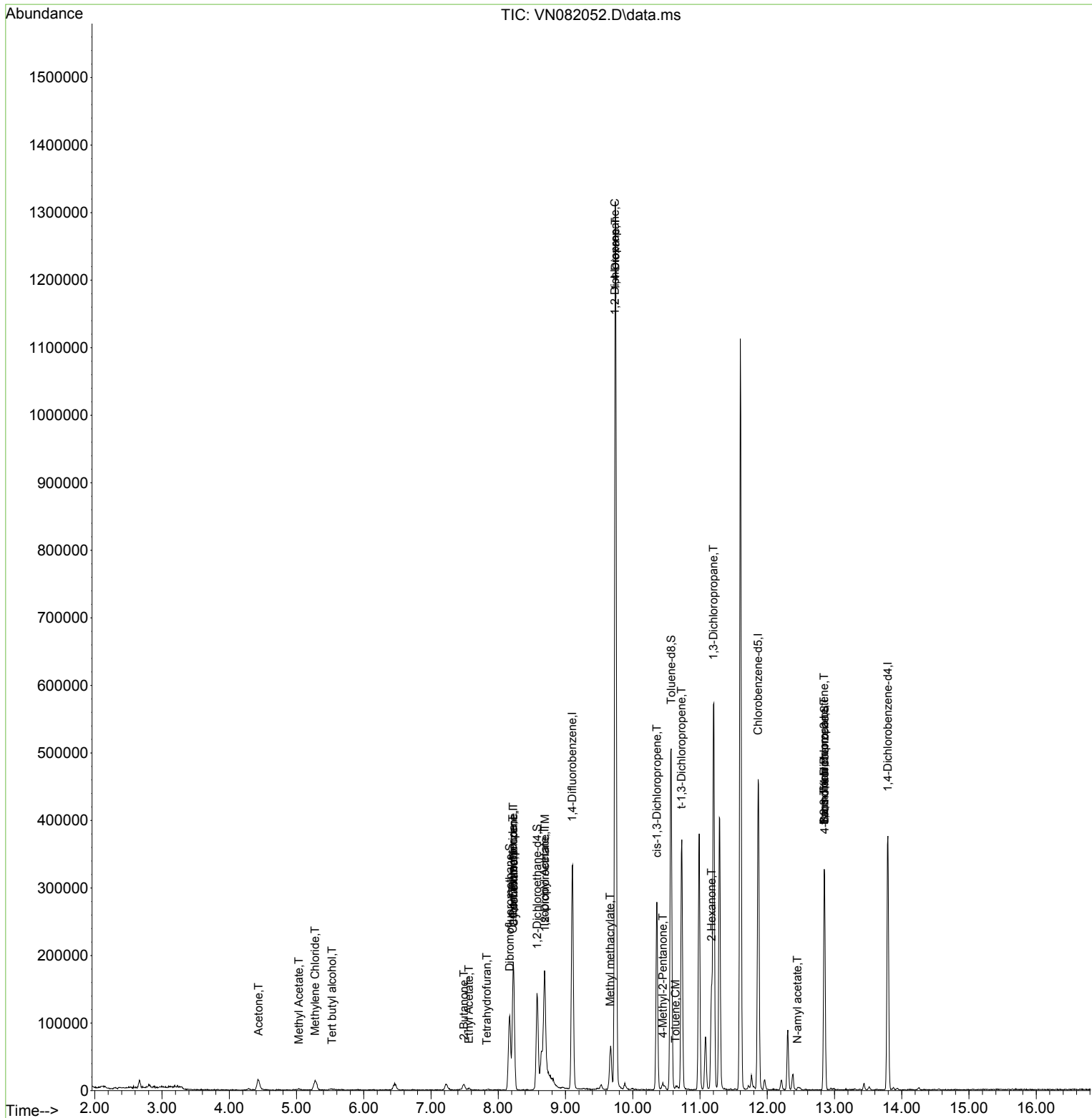
Internal Standards						
1) Pentafluorobenzene	8.224	168	122321	50.000	ug/l	0.00
34) 1,4-Difluorobenzene	9.100	114	268767	50.000	ug/l	0.00
63) Chlorobenzene-d5	11.865	117	242289	50.000	ug/l	0.00
72) 1,4-Dichlorobenzene-d4	13.794	152	89375	50.000	ug/l	0.00
System Monitoring Compounds						
33) 1,2-Dichloroethane-d4	8.577	65	109690	53.133	ug/l	0.00
Spiked Amount	50.000	Range 74 - 125	Recovery	=	106.260%	
35) Dibromofluoromethane	8.171	113	79395	49.064	ug/l	0.00
Spiked Amount	50.000	Range 75 - 124	Recovery	=	98.120%	
50) Toluene-d8	10.571	98	334367	52.611	ug/l	0.00
Spiked Amount	50.000	Range 86 - 113	Recovery	=	105.220%	
62) 4-Bromofluorobenzene	12.853	95	113494	45.175	ug/l	0.00
Spiked Amount	50.000	Range 64 - 133	Recovery	=	90.340%	
Target Compounds						
						Qvalue
5) Bromomethane	2.953	94	76	Below Cal	#	3
11) Tert butyl alcohol	5.530	59	1442	3.842	ug/l #	82
13) Acrolein	4.177	56	197	Below Cal	#	15
16) Acetone	4.436	43	29461	43.748	ug/l	94
18) Methyl Acetate	5.036	43	3033	1.450	ug/l #	57
20) Methylene Chloride	5.277	84	11028	6.233	ug/l	90
25) 2-Butanone	7.488	43	14386	12.278	ug/l #	71
29) Tetrahydrofuran	7.830	42	307	0.365	ug/l #	29
31) Cyclohexane	8.230	56	4269	1.373	ug/l #	57
36) 1,1-Dichloropropene	8.224	75	14112	5.360	ug/l #	44
37) Ethyl Acetate	7.565	43	3031	1.065	ug/l #	93
38) Carbon Tetrachloride	8.218	117	13998	5.440	ug/l #	21
42) 1,2-Dichloroethane	8.694	62	1013	0.345	ug/l #	73
43) Isopropyl Acetate	8.688	43	273613	51.123	ug/l #	72
45) 1,2-Dichloropropane	9.735	63	1447	0.700	ug/l #	45
48) Methyl methacrylate	9.665	41	5585	2.186	ug/l #	36
49) 1,4-Dioxane	9.741	88	151	3.888	ug/l #	1
51) 4-Methyl-2-Pentanone	10.447	43	6937	2.302	ug/l #	87
52) Toluene	10.635	92	992	0.210	ug/l #	64
53) t-1,3-Dichloropropene	10.724	75	716	0.218	ug/l #	73
54) cis-1,3-Dichloropropene	10.359	75	49167	14.542	ug/l #	69
57) 1,3-Dichloropropane	11.200	76	5986	1.809	ug/l #	44
59) 2-Hexanone	11.171	43	122735	54.738	ug/l #	23
71) Bromoform	12.847	173	594	0.439	ug/l #	1
74) N-amyl acetate	12.447	43	4274	0.966	ug/l #	39
76) 1,2,3-Trichloropropane	12.847	75	64042	27.636	ug/l #	1
81) trans-1,4-Dichloro-2-b...	12.847	75	64042	56.631	ug/l #	12

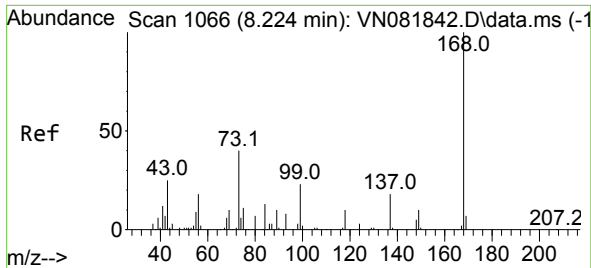
(#) = qualifier out of range (m) = manual integration (+) = signals summed

Data Path : Z:\voasrv\HPCHEM1\MSVOA_N\Data\VN050924\
 Data File : VN082052.D
 Acq On : 09 May 2024 15:46
 Operator : JC\MD
 Sample : PB160759ZHE#04
 Misc : 5.0mL/MSVOA_N/WATER
 ALS Vial : 15 Sample Multiplier: 1

Instrument :
 MSVOA_N
 ClientSampleId :

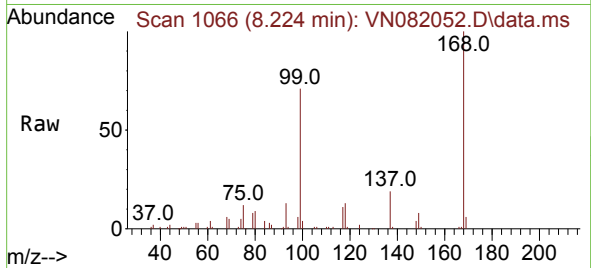
Quant Time: May 10 03:52:43 2024
 Quant Method : Z:\voasrv\HPCHEM1\MSVOA_N\methods\82N042524W.M
 Quant Title : SW846 8260
 QLast Update : Fri Apr 26 05:26:49 2024
 Response via : Initial Calibration



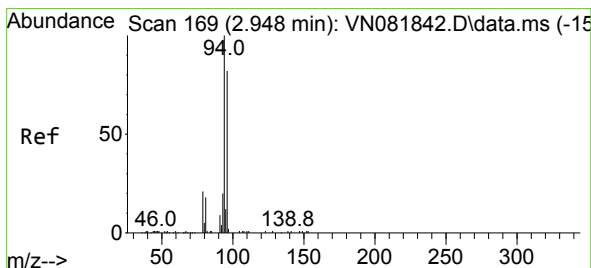
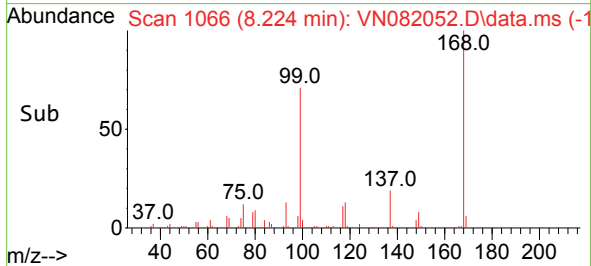
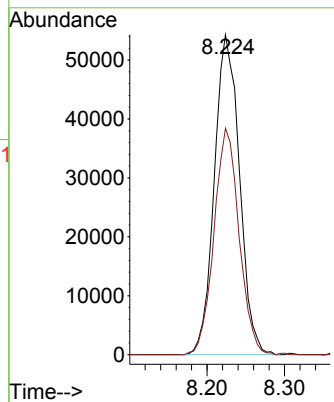


#1
 Pentafluorobenzene
 Concen: 50.000 ug/l
 RT: 8.224 min Scan# 10
 Delta R.T. -0.000 min
 Lab File: VN082052.D
 Acq: 09 May 2024 15:46

Instrument :
 MSVOA_N
 ClientSampleId :

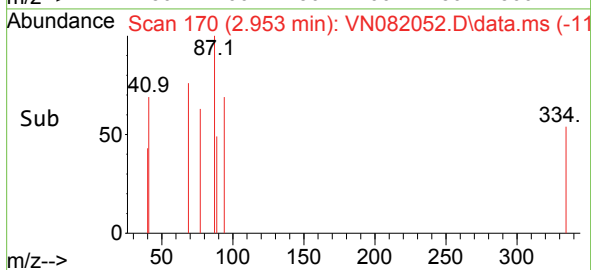
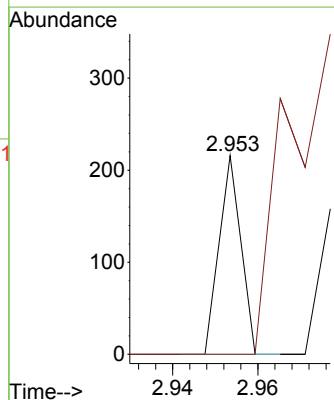
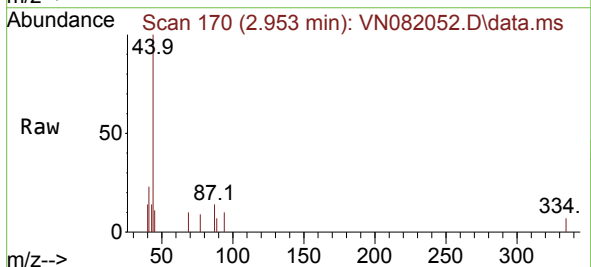


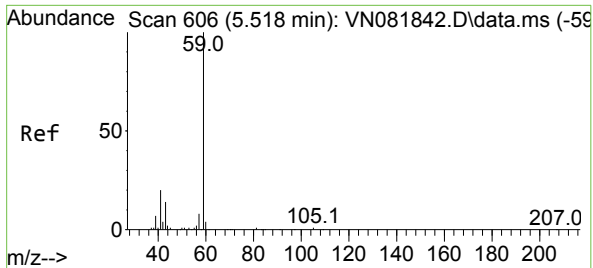
Tgt Ion:168 Resp: 122321
 Ion Ratio Lower Upper
 168 100
 99 70.7 48.2 72.4



#5
 Bromomethane
 Concen: Below Cal
 RT: 2.953 min Scan# 170
 Delta R.T. 0.005 min
 Lab File: VN082052.D
 Acq: 09 May 2024 15:46

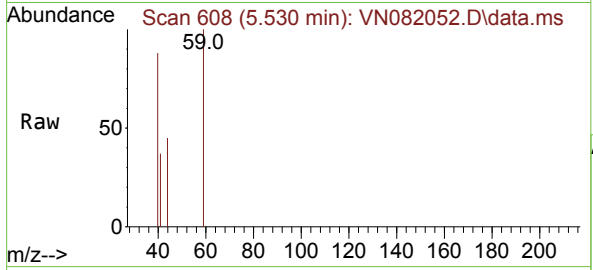
Tgt Ion: 94 Resp: 76
 Ion Ratio Lower Upper
 94 100
 96 0.0 74.8 112.2#



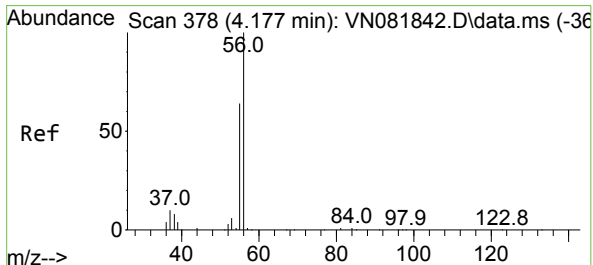
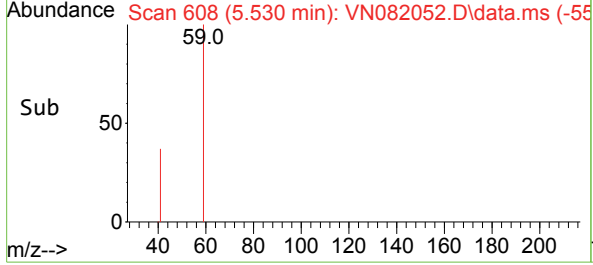
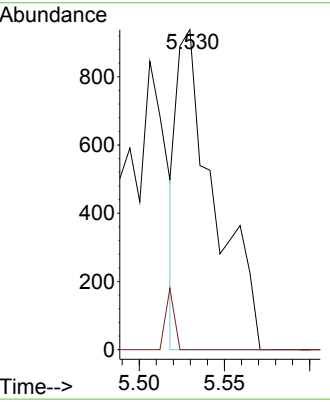


#11
 Tert butyl alcohol
 Concen: 3.842 ug/l
 RT: 5.530 min Scan# 608
 Delta R.T. 0.012 min
 Lab File: VN082052.D
 Acq: 09 May 2024 15:46

Instrument : MSVOA_N
 ClientSampleId :

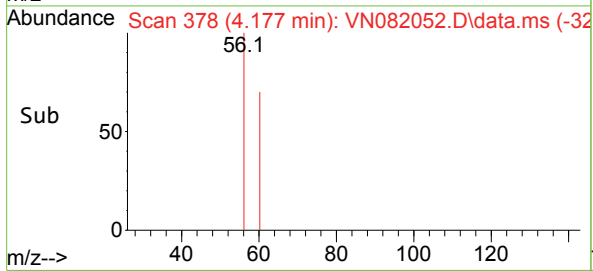
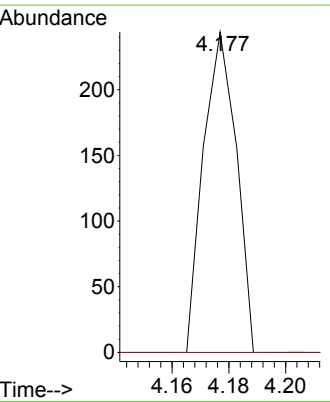
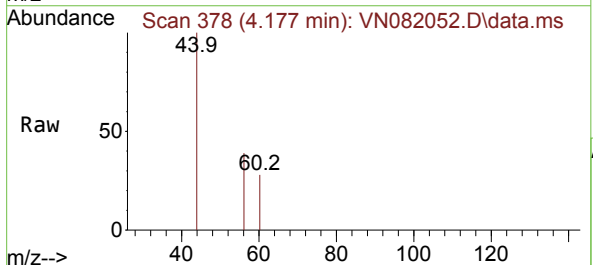


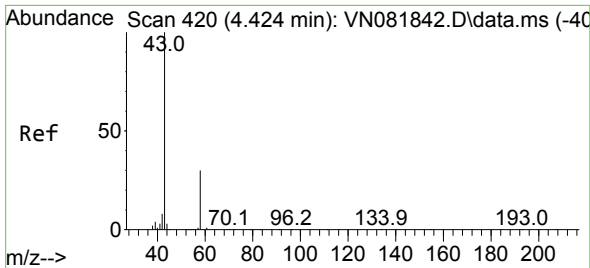
Tgt Ion: 59 Resp: 1442
 Ion Ratio Lower Upper
 59 100
 57 4.4 8.9 13.3#



#13
 Acrolein
 Concen: Below Cal
 RT: 4.177 min Scan# 378
 Delta R.T. -0.000 min
 Lab File: VN082052.D
 Acq: 09 May 2024 15:46

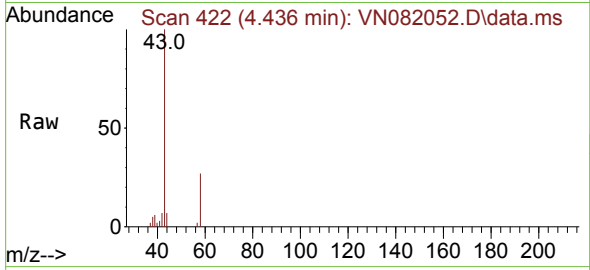
Tgt Ion: 56 Resp: 197
 Ion Ratio Lower Upper
 56 100
 55 0.0 55.8 83.8#



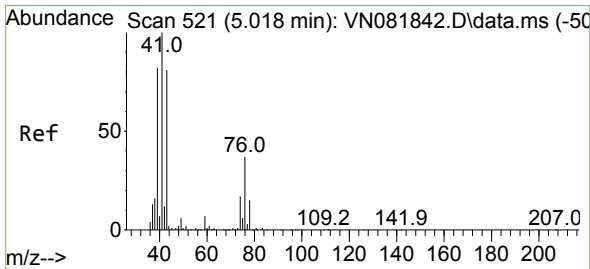
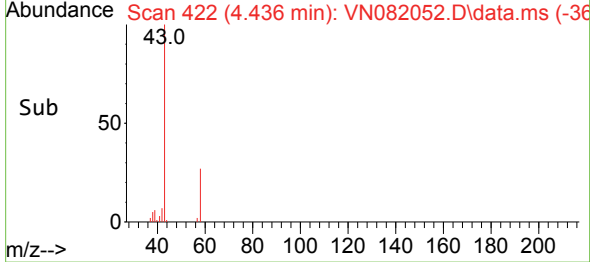
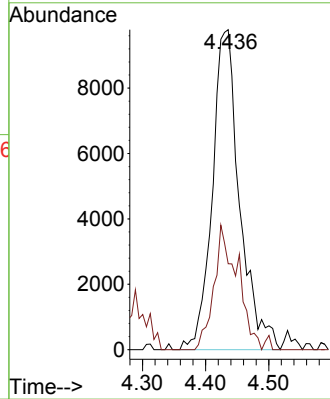


#16
 Acetone
 Concen: 43.748 ug/l
 RT: 4.436 min Scan# 41
 Delta R.T. 0.012 min
 Lab File: VN082052.D
 Acq: 09 May 2024 15:46

Instrument :
 MSVOA_N
 ClientSampleId :

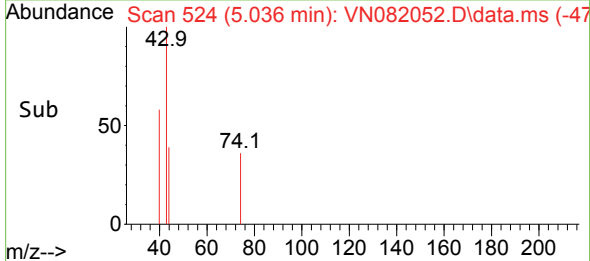
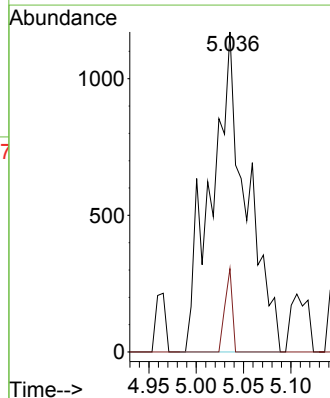
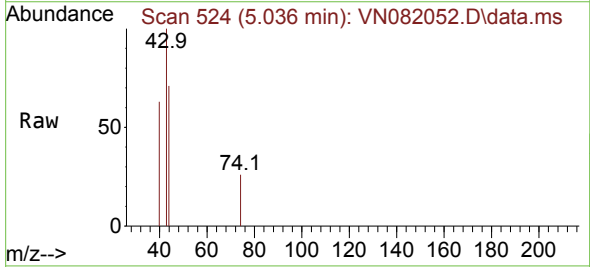


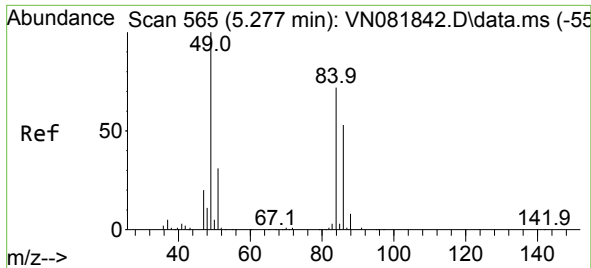
Tgt Ion: 43 Resp: 29461
 Ion Ratio Lower Upper
 43 100
 58 27.9 25.2 37.8



#18
 Methyl Acetate
 Concen: 1.450 ug/l
 RT: 5.036 min Scan# 524
 Delta R.T. 0.018 min
 Lab File: VN082052.D
 Acq: 09 May 2024 15:46

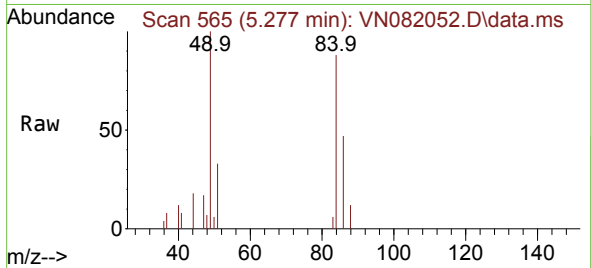
Tgt Ion: 43 Resp: 3033
 Ion Ratio Lower Upper
 43 100
 74 5.4 22.2 33.2#



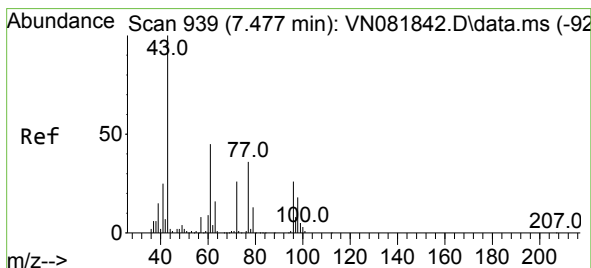
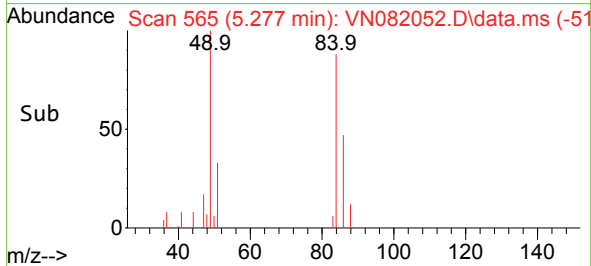
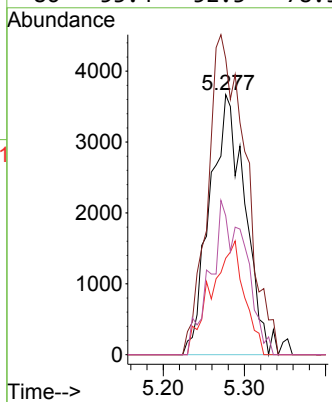


#20
 Methylene Chloride
 Concen: 6.233 ug/l
 RT: 5.277 min Scan# 501
 Delta R.T. 0.000 min
 Lab File: VN082052.D
 Acq: 09 May 2024 15:46

Instrument : MSVOA_N
 ClientSampleId :

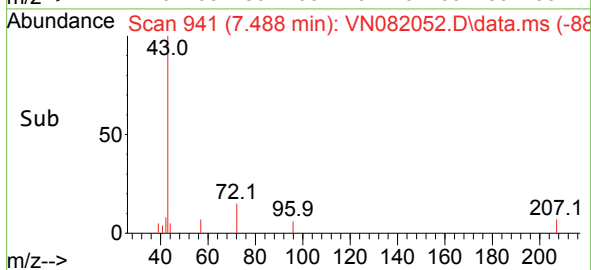
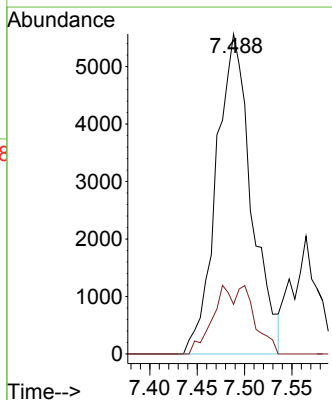
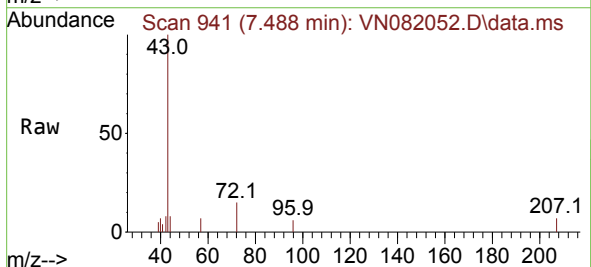


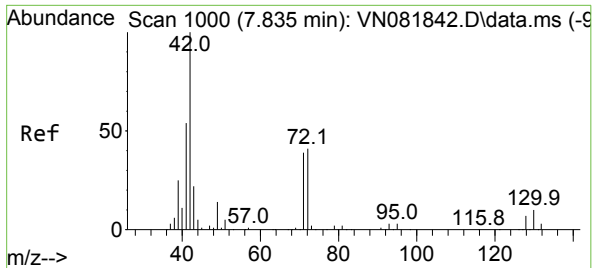
Tgt Ion	Resp	Lower	Upper
84	11028		
84	100		
49	113.8	84.9	127.3
51	37.1	27.0	40.6
86	53.4	52.3	78.5



#25
 2-Butanone
 Concen: 12.278 ug/l
 RT: 7.488 min Scan# 941
 Delta R.T. 0.012 min
 Lab File: VN082052.D
 Acq: 09 May 2024 15:46

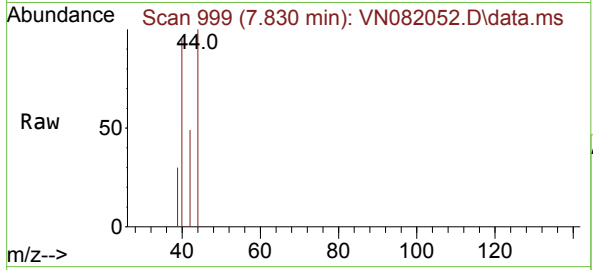
Tgt Ion	Resp	Lower	Upper
43	14386		
43	100		
72	15.5	25.3	37.9#





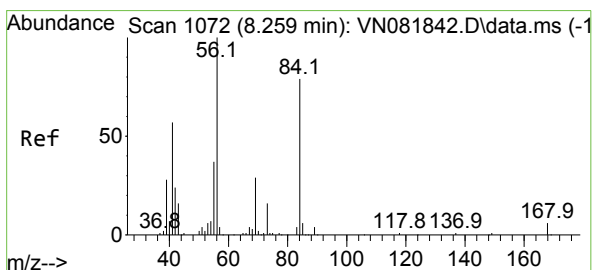
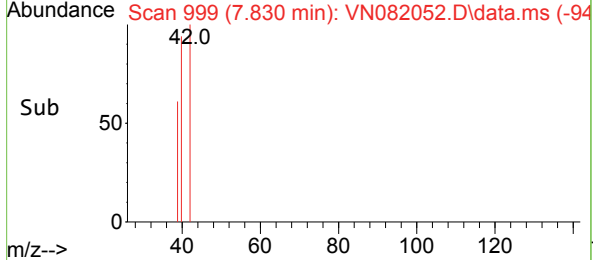
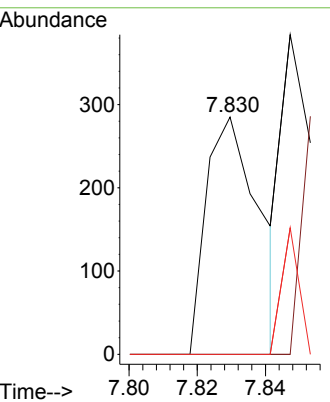
#29
 Tetrahydrofuran
 Concen: 0.365 ug/l
 RT: 7.830 min Scan# 91
 Delta R.T. -0.006 min
 Lab File: VN082052.D
 Acq: 09 May 2024 15:46

Instrument : MSVOA_N
 ClientSampleId :

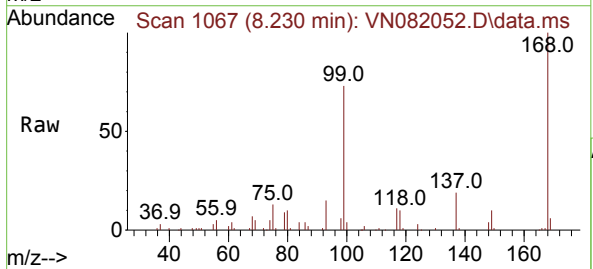


Tgt Ion: 42 Resp: 307

Ion	Ratio	Lower	Upper
42	100		
72	0.0	39.3	58.9#
71	0.0	37.4	56.0#

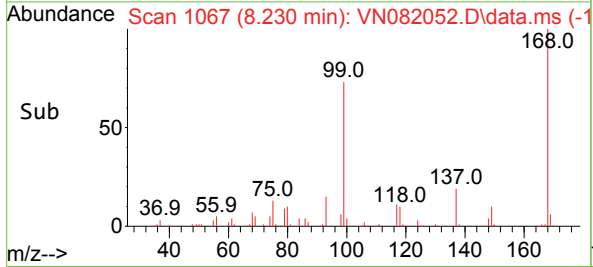
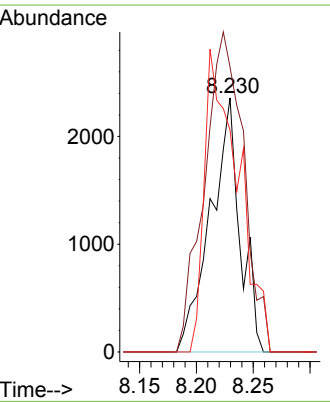


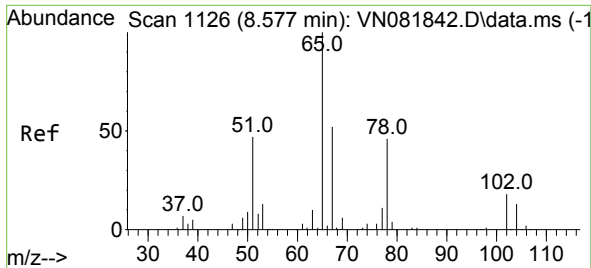
#31
 Cyclohexane
 Concen: 1.373 ug/l
 RT: 8.230 min Scan# 1067
 Delta R.T. -0.029 min
 Lab File: VN082052.D
 Acq: 09 May 2024 15:46



Tgt Ion: 56 Resp: 4269

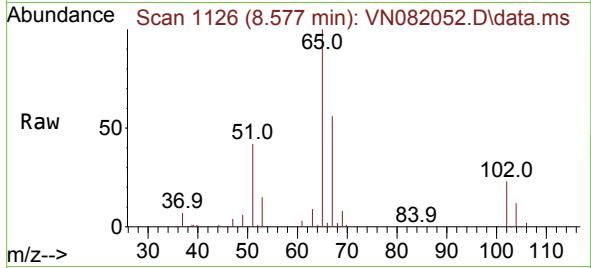
Ion	Ratio	Lower	Upper
56	100		
69	112.1	24.4	36.6#
84	87.4	77.0	115.4



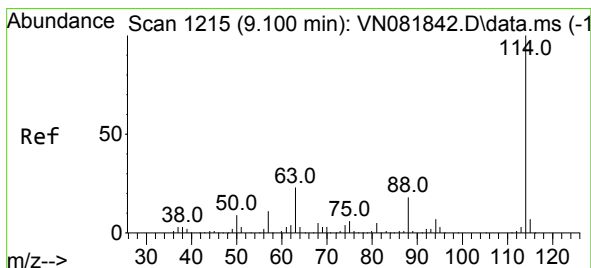
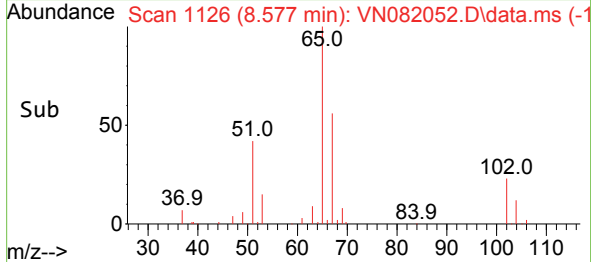
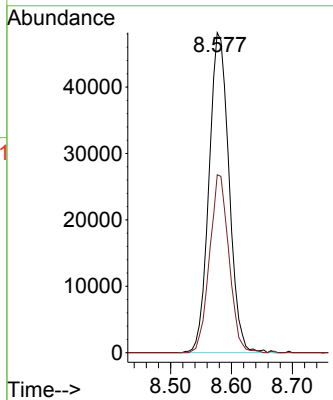


#33
 1,2-Dichloroethane-d4
 Concen: 53.133 ug/l
 RT: 8.577 min Scan# 1126
 Delta R.T. 0.000 min
 Lab File: VN082052.D
 Acq: 09 May 2024 15:46

Instrument :
 MSVOA_N
 ClientSampleId :

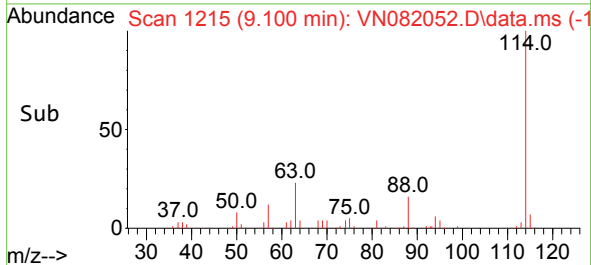
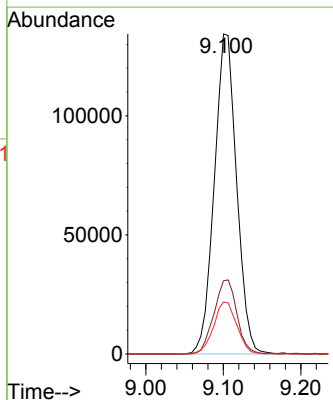
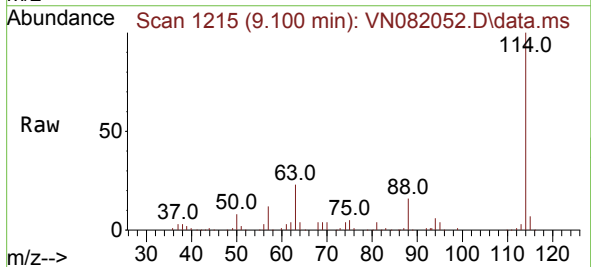


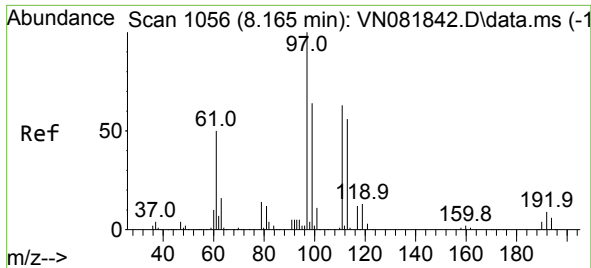
Tgt Ion: 65 Resp: 109690
 Ion Ratio Lower Upper
 65 100
 67 53.9 0.0 103.0



#34
 1,4-Difluorobenzene
 Concen: 50.000 ug/l
 RT: 9.100 min Scan# 1215
 Delta R.T. 0.000 min
 Lab File: VN082052.D
 Acq: 09 May 2024 15:46

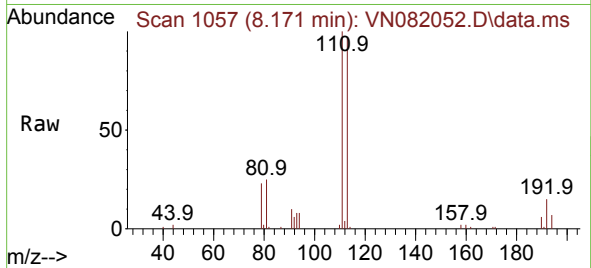
Tgt Ion: 114 Resp: 268767
 Ion Ratio Lower Upper
 114 100
 63 22.8 0.0 41.0
 88 16.2 0.0 31.4



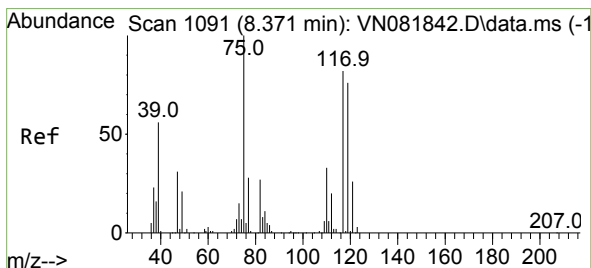
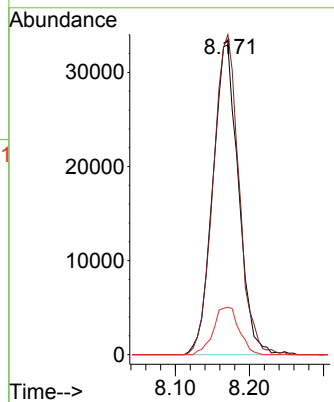
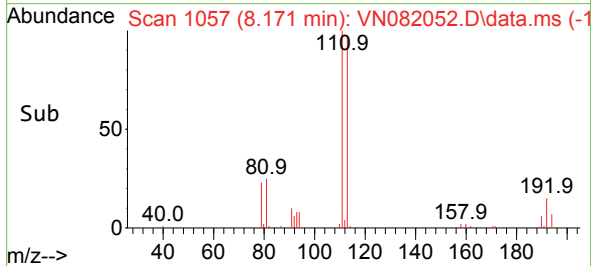


#35
 Dibromofluoromethane
 Concen: 49.064 ug/l
 RT: 8.171 min Scan# 1066
 Delta R.T. 0.006 min
 Lab File: VN082052.D
 Acq: 09 May 2024 15:46

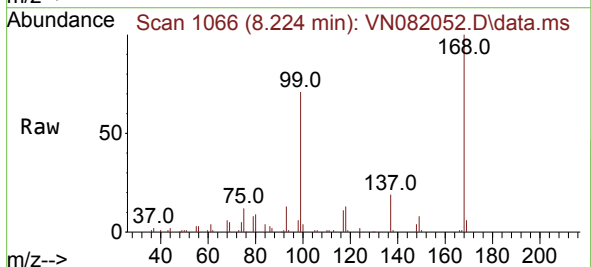
Instrument : MSVOA_N
 ClientSampleId :



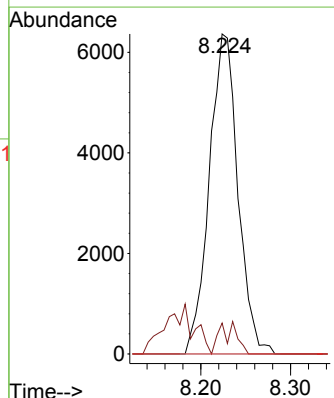
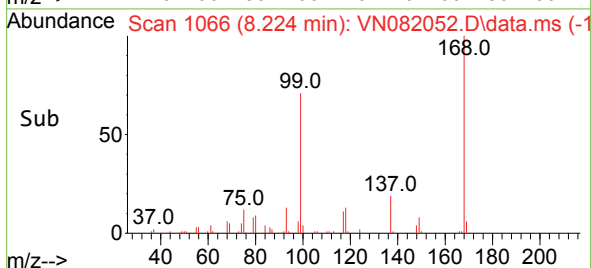
Tgt Ion: 113 Resp: 79395
 Ion Ratio Lower Upper
 113 100
 111 103.4 83.4 125.2
 192 15.3 14.0 21.0

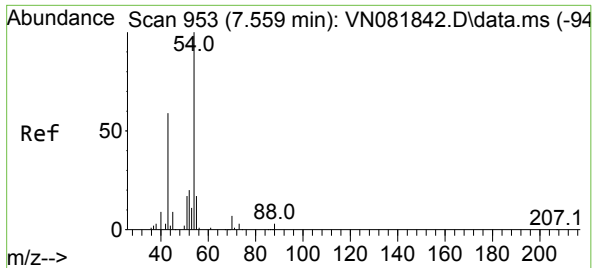


#36
 1,1-Dichloropropene
 Concen: 5.360 ug/l
 RT: 8.224 min Scan# 1066
 Delta R.T. -0.147 min
 Lab File: VN082052.D
 Acq: 09 May 2024 15:46



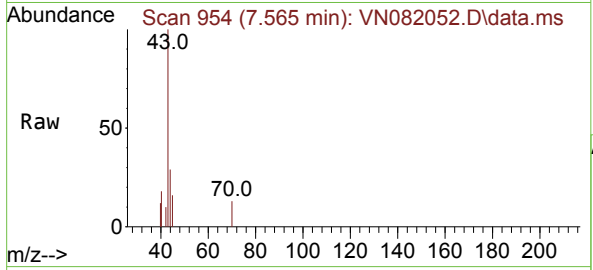
Tgt Ion: 75 Resp: 14112
 Ion Ratio Lower Upper
 75 100
 110 3.0 17.8 53.5#
 77 0.0 25.0 37.4#





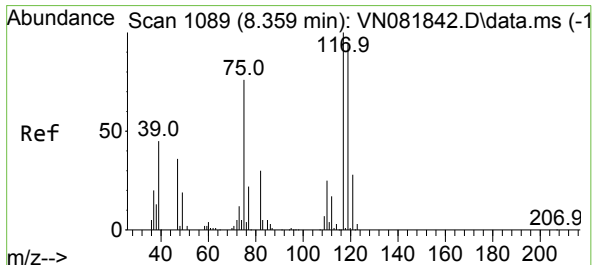
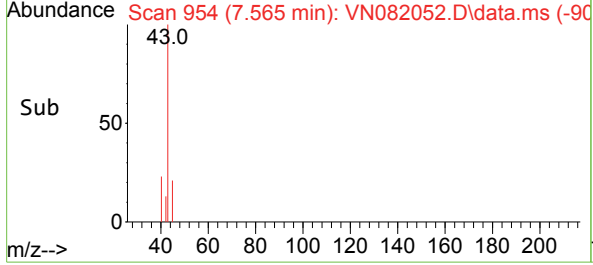
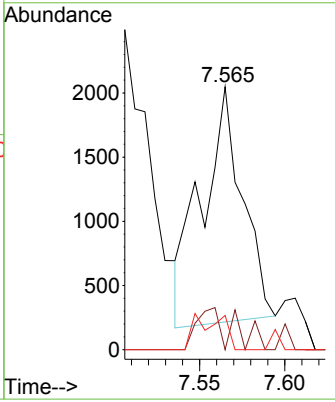
#37
 Ethyl Acetate
 Concen: 1.065 ug/l
 RT: 7.565 min Scan# 91
 Delta R.T. 0.006 min
 Lab File: VN082052.D
 Acq: 09 May 2024 15:46

Instrument : MSVOA_N
 ClientSampleId :

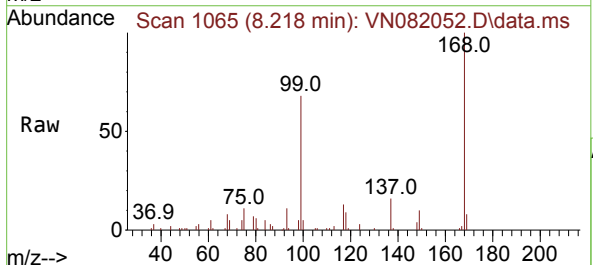


Tgt Ion: 43 Resp: 3031

Ion	Ratio	Lower	Upper
43	100		
61	9.7	11.3	16.9#
70	10.5	8.7	13.1

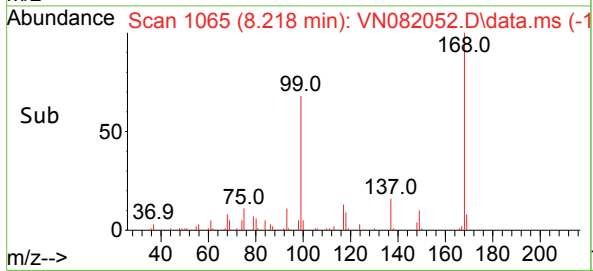
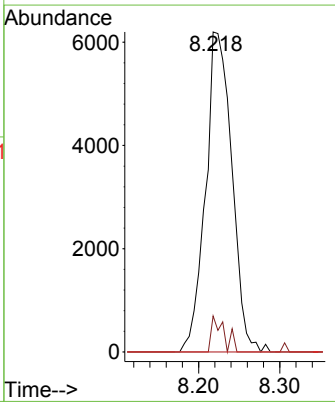


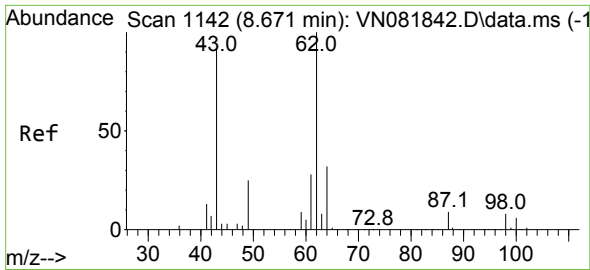
#38
 Carbon Tetrachloride
 Concen: 5.440 ug/l
 RT: 8.218 min Scan# 1065
 Delta R.T. -0.141 min
 Lab File: VN082052.D
 Acq: 09 May 2024 15:46



Tgt Ion: 117 Resp: 13998

Ion	Ratio	Lower	Upper
117	100		
119	11.3	76.5	114.7#
121	0.0	23.9	35.9#

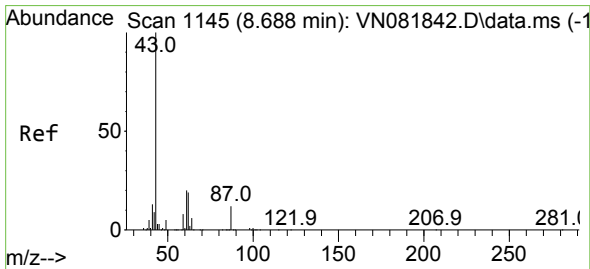
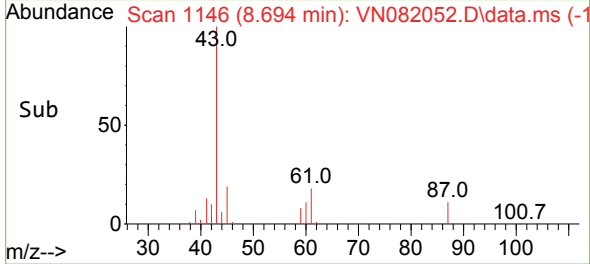
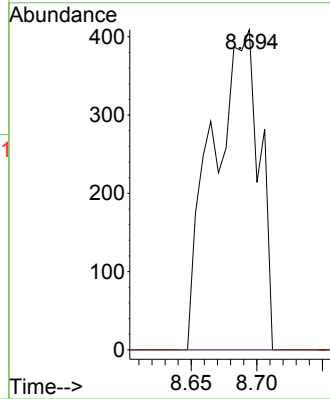
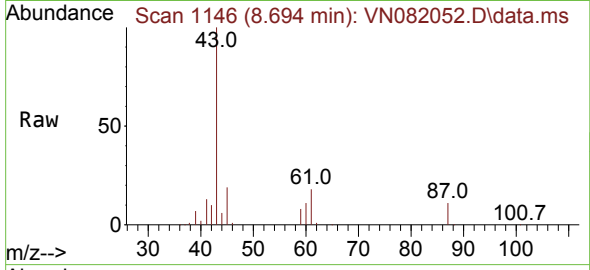




#42
 1,2-Dichloroethane
 Concen: 0.345 ug/l
 RT: 8.694 min Scan# 1146
 Delta R.T. 0.024 min
 Lab File: VN082052.D
 Acq: 09 May 2024 15:46

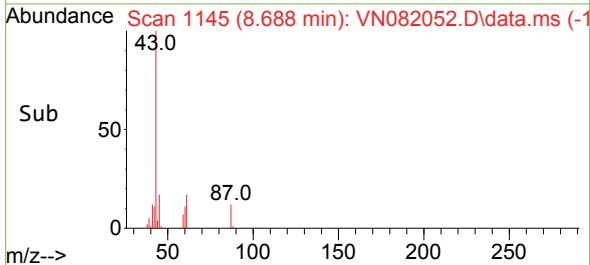
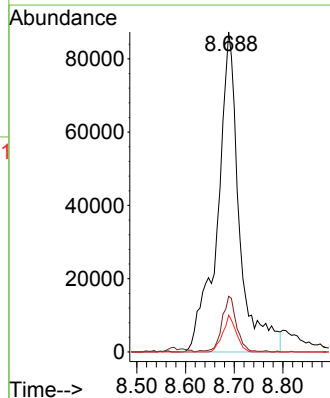
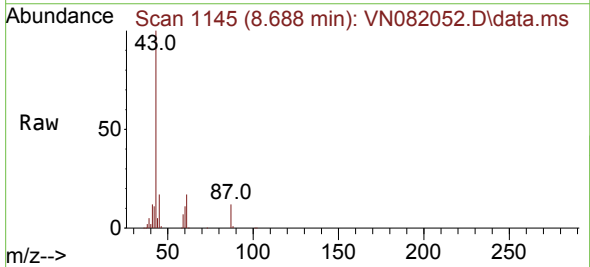
Instrument :
 MSVOA_N
 ClientSampleId :

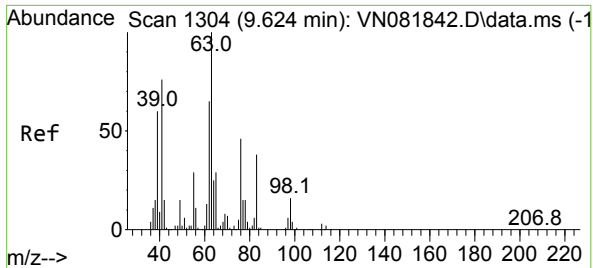
Tgt Ion: 62 Resp: 1013
 Ion Ratio Lower Upper
 62 100
 98 0.0 0.0 19.6



#43
 Isopropyl Acetate
 Concen: 51.123 ug/l
 RT: 8.688 min Scan# 1145
 Delta R.T. 0.000 min
 Lab File: VN082052.D
 Acq: 09 May 2024 15:46

Tgt Ion: 43 Resp: 273613
 Ion Ratio Lower Upper
 43 100
 61 11.6 22.8 34.2#
 87 7.0 12.0 18.0#

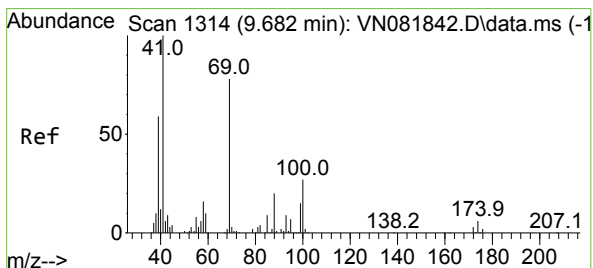
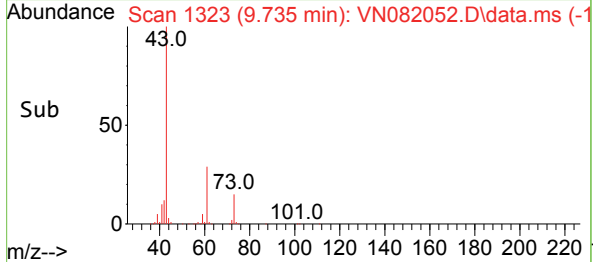
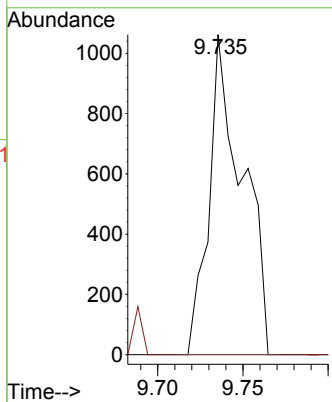
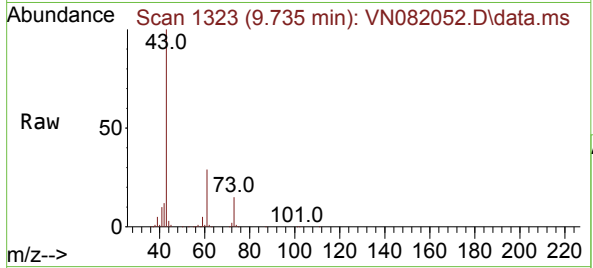




#45
 1,2-Dichloropropane
 Concen: 0.700 ug/l
 RT: 9.735 min Scan# 11
 Delta R.T. 0.112 min
 Lab File: VN082052.D
 Acq: 09 May 2024 15:46

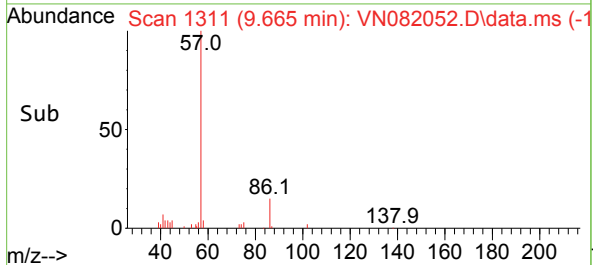
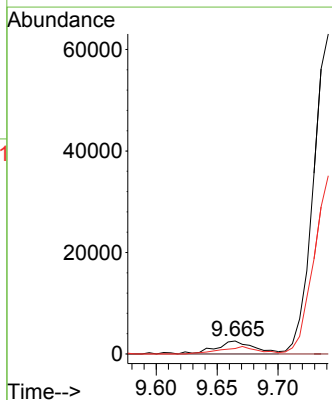
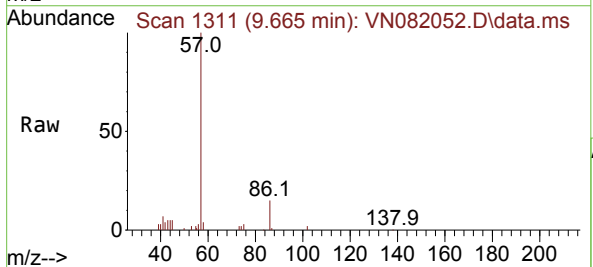
Instrument :
 MSVOA_N
 ClientSampleId :

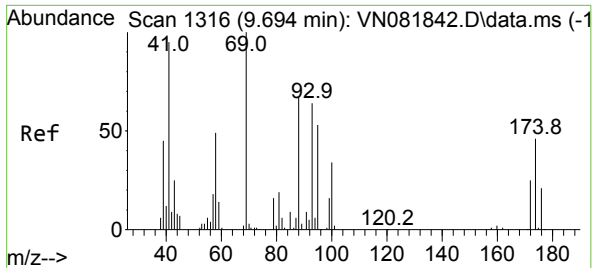
Tgt Ion: 63 Resp: 1447
 Ion Ratio Lower Upper
 63 100
 65 0.0 24.1 36.1#



#48
 Methyl methacrylate
 Concen: 2.186 ug/l
 RT: 9.665 min Scan# 1311
 Delta R.T. -0.018 min
 Lab File: VN082052.D
 Acq: 09 May 2024 15:46

Tgt Ion: 41 Resp: 5585
 Ion Ratio Lower Upper
 41 100
 69 0.0 77.9 116.9#
 39 55.0 50.9 76.3

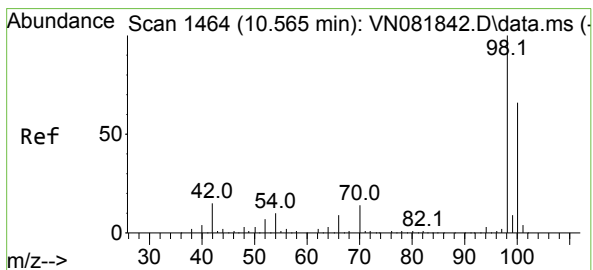
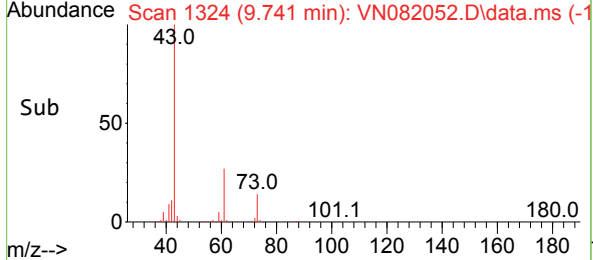
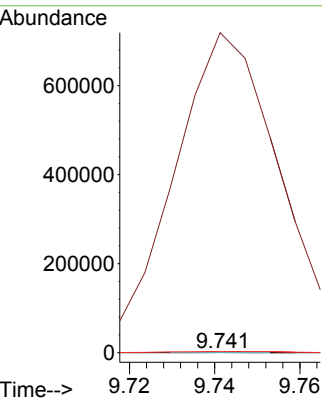
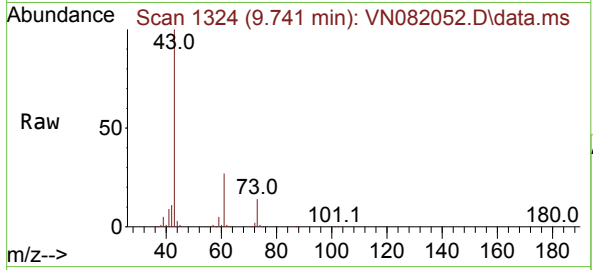




#49
 1,4-Dioxane
 Concen: 3.888 ug/l
 RT: 9.741 min Scan# 11
 Delta R.T. 0.047 min
 Lab File: VN082052.D
 Acq: 09 May 2024 15:46

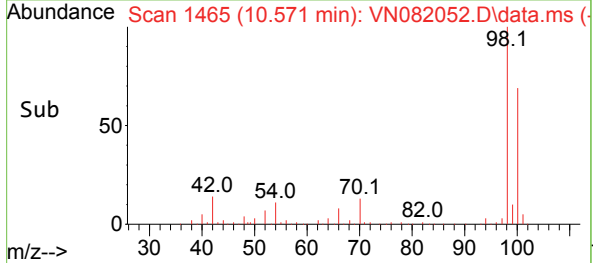
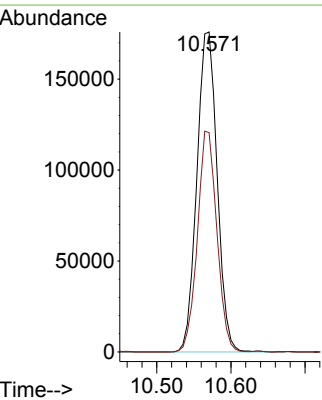
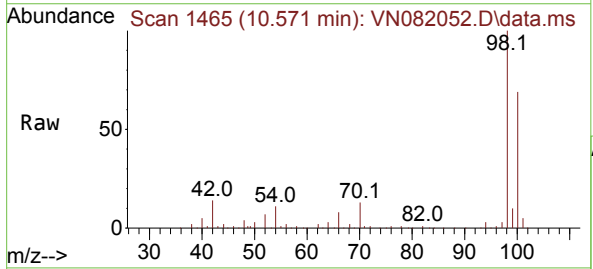
Instrument : MSVOA_N
 ClientSampleId :

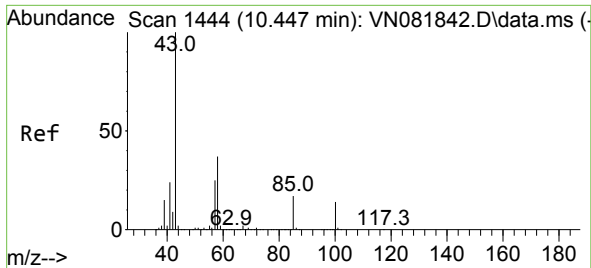
Tgt Ion: 88 Resp: 151
 Ion Ratio Lower Upper
 88 100
 43 843707.3 19.0 28.6#
 58 3680.1 50.6 76.0#



#50
 Toluene-d8
 Concen: 52.611 ug/l
 RT: 10.571 min Scan# 1465
 Delta R.T. 0.006 min
 Lab File: VN082052.D
 Acq: 09 May 2024 15:46

Tgt Ion: 98 Resp: 334367
 Ion Ratio Lower Upper
 98 100
 100 66.3 51.8 77.6

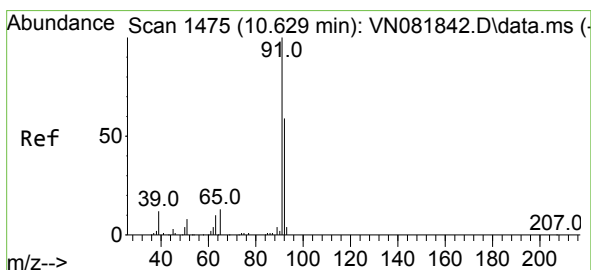
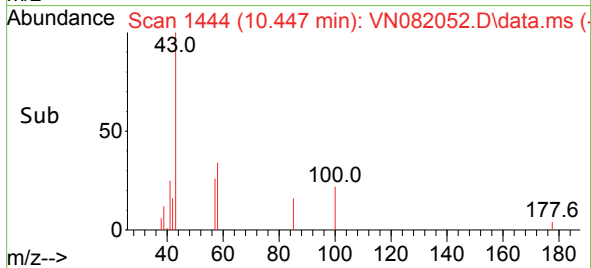
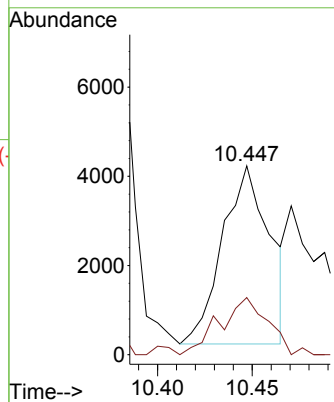
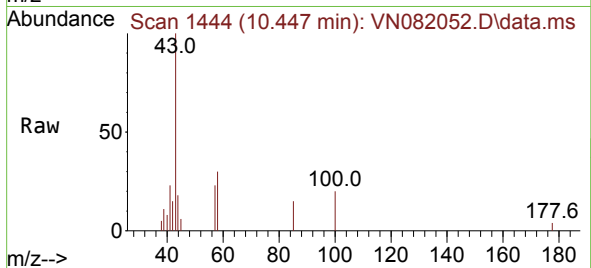




#51
 4-Methyl-2-Pentanone
 Concen: 2.302 ug/l
 RT: 10.447 min Scan# 1444
 Delta R.T. 0.000 min
 Lab File: VN082052.D
 Acq: 09 May 2024 15:46

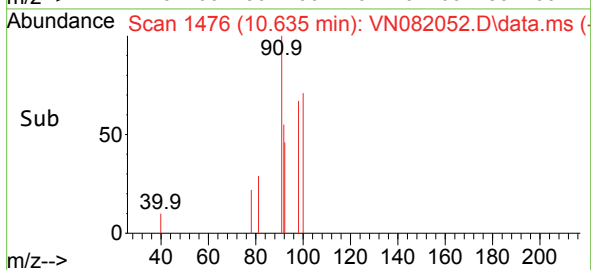
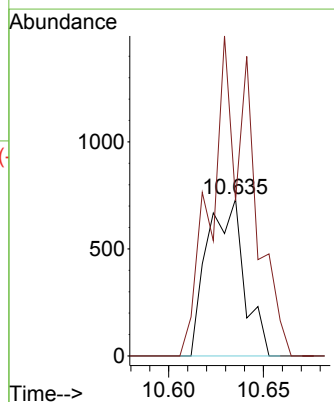
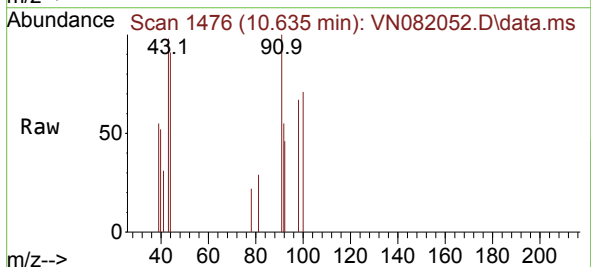
Instrument :
 MSVOA_N
 ClientSampleId :

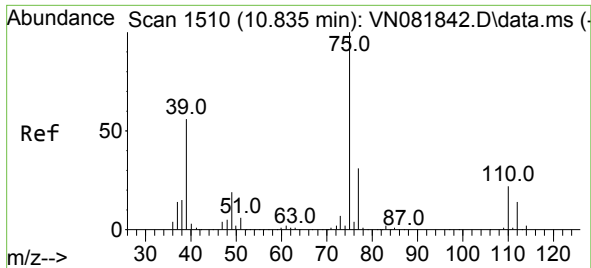
Tgt Ion: 43 Resp: 6937
 Ion Ratio Lower Upper
 43 100
 58 33.1 33.2 49.8#



#52
 Toluene
 Concen: 0.210 ug/l
 RT: 10.635 min Scan# 1476
 Delta R.T. 0.006 min
 Lab File: VN082052.D
 Acq: 09 May 2024 15:46

Tgt Ion: 92 Resp: 992
 Ion Ratio Lower Upper
 92 100
 91 220.5 136.7 205.1#

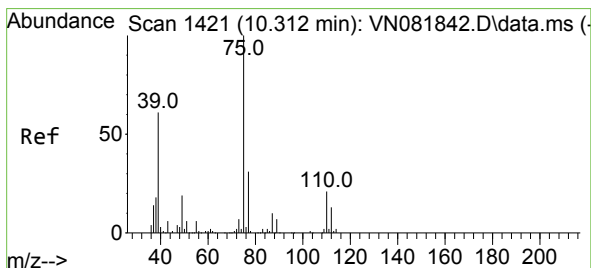
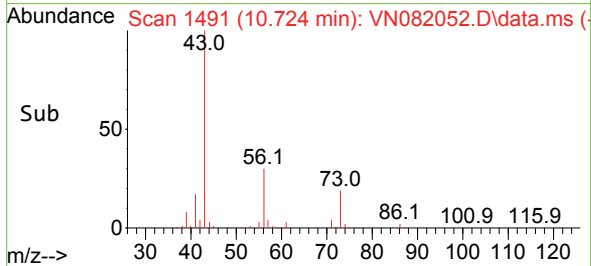
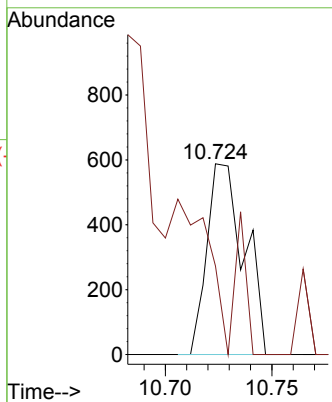
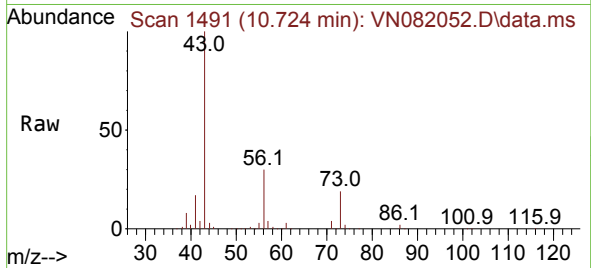




#53
 t-1,3-Dichloropropene
 Concen: 0.218 ug/l
 RT: 10.724 min Scan# 1491
 Delta R.T. -0.112 min
 Lab File: VN082052.D
 Acq: 09 May 2024 15:46

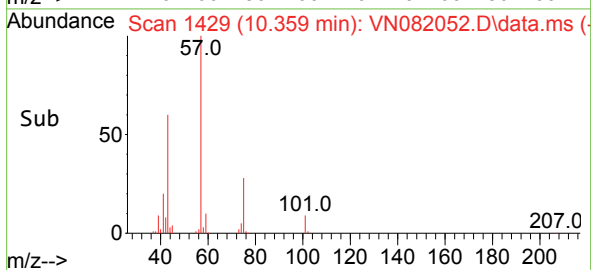
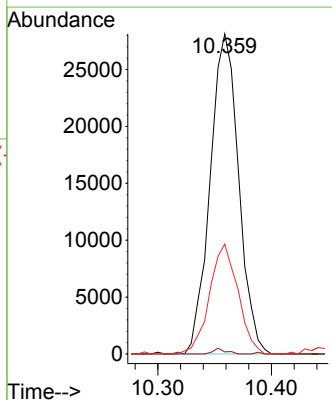
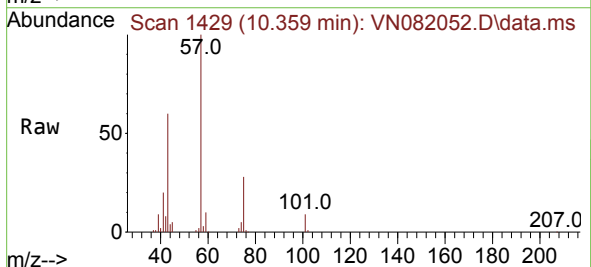
Instrument : MSVOA_N
 ClientSampleId :

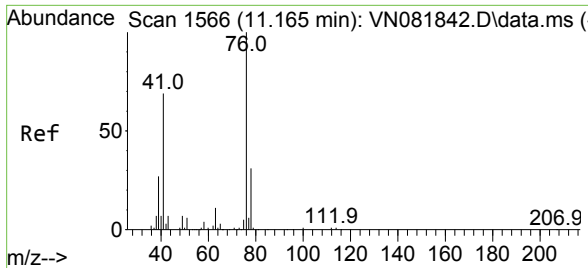
Tgt Ion: 75 Resp: 716
 Ion Ratio Lower Upper
 75 100
 77 46.4 25.4 38.0#



#54
 cis-1,3-Dichloropropene
 Concen: 14.542 ug/l
 RT: 10.359 min Scan# 1429
 Delta R.T. 0.047 min
 Lab File: VN082052.D
 Acq: 09 May 2024 15:46

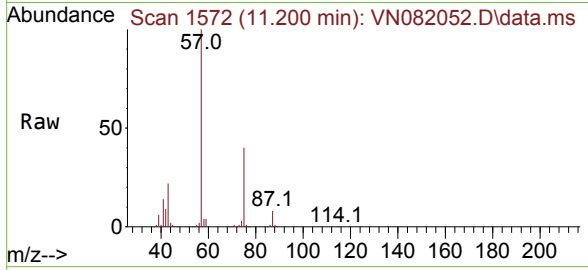
Tgt Ion: 75 Resp: 49167
 Ion Ratio Lower Upper
 75 100
 77 0.7 25.0 37.4#
 39 34.4 34.8 52.2#



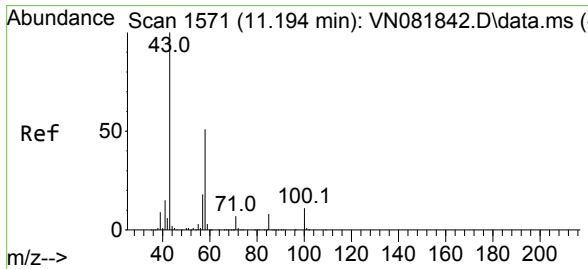
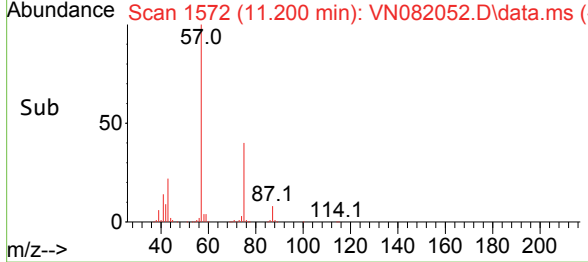
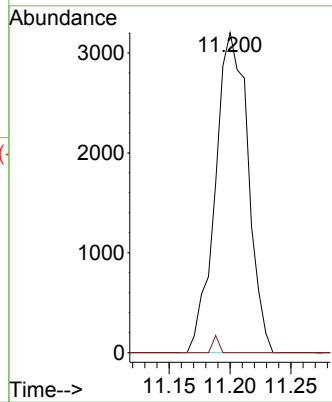


#57
 1,3-Dichloropropane
 Concen: 1.809 ug/l
 RT: 11.200 min Scan# 1572
 Delta R.T. 0.035 min
 Lab File: VN082052.D
 Acq: 09 May 2024 15:46

Instrument : MSVOA_N
 ClientSampleId :

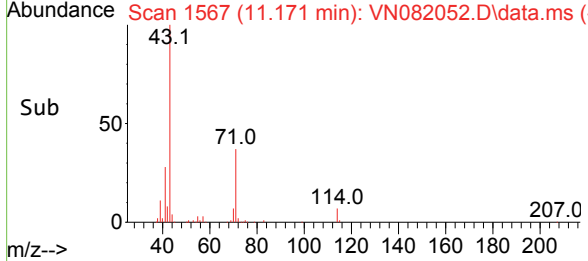
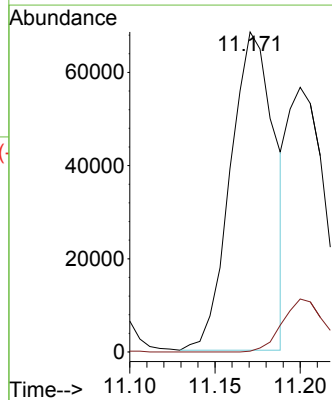
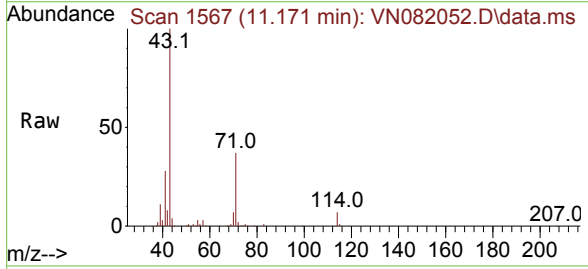


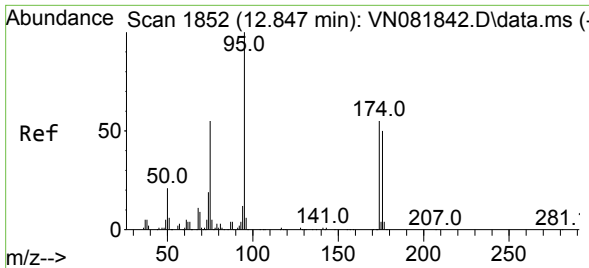
Tgt Ion: 76 Resp: 5986
 Ion Ratio Lower Upper
 76 100
 78 1.0 25.8 38.6#



#59
 2-Hexanone
 Concen: 54.738 ug/l
 RT: 11.171 min Scan# 1567
 Delta R.T. -0.023 min
 Lab File: VN082052.D
 Acq: 09 May 2024 15:46

Tgt Ion: 43 Resp: 122735
 Ion Ratio Lower Upper
 43 100
 58 0.0 28.3 84.9#

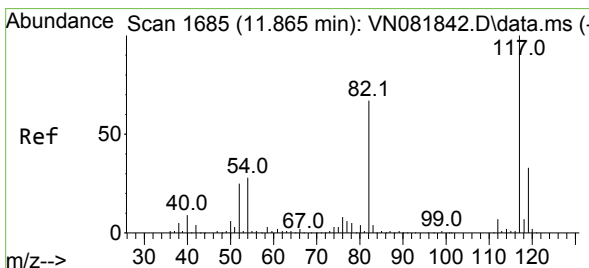
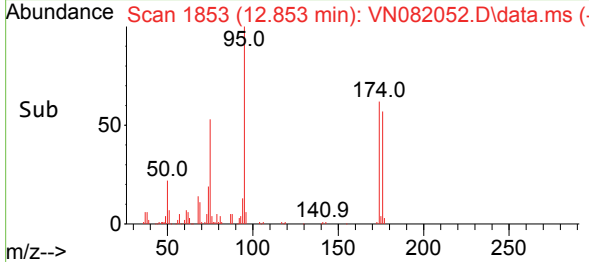
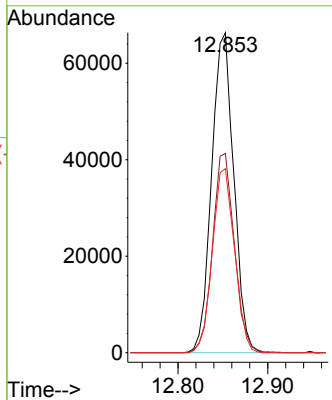
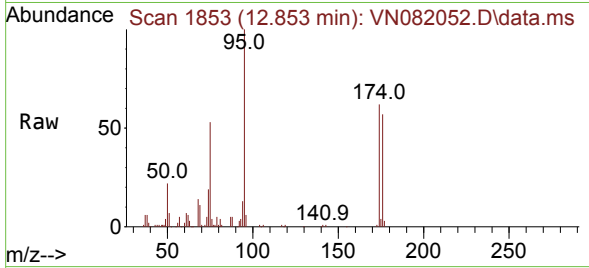




#62
 4-Bromofluorobenzene
 Concen: 45.175 ug/l
 RT: 12.853 min Scan# 1853
 Delta R.T. 0.006 min
 Lab File: VN082052.D
 Acq: 09 May 2024 15:46

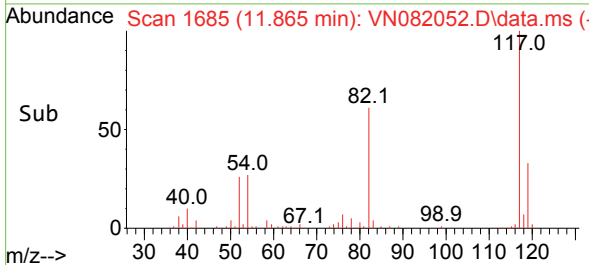
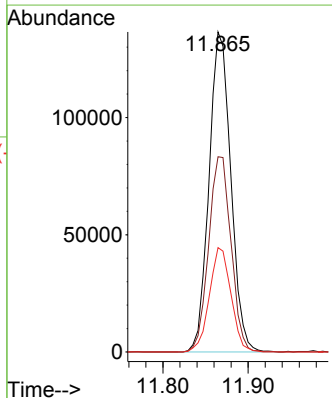
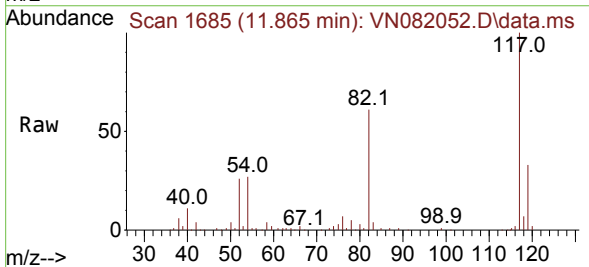
Instrument :
 MSVOA_N
 ClientSampleId :

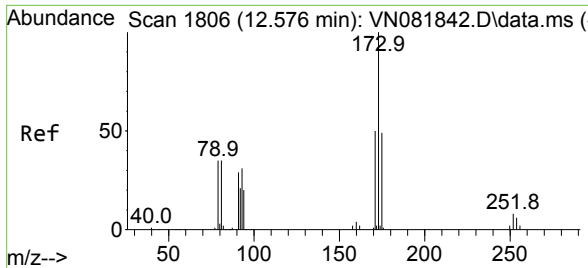
Tgt Ion: 95 Resp: 113494
 Ion Ratio Lower Upper
 95 100
 174 61.3 0.0 160.6
 176 57.6 0.0 152.8



#63
 Chlorobenzene-d5
 Concen: 50.000 ug/l
 RT: 11.865 min Scan# 1685
 Delta R.T. 0.000 min
 Lab File: VN082052.D
 Acq: 09 May 2024 15:46

Tgt Ion: 117 Resp: 242289
 Ion Ratio Lower Upper
 117 100
 82 61.0 44.6 66.8
 119 32.6 25.9 38.9

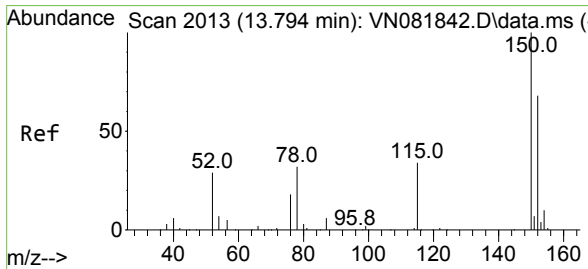
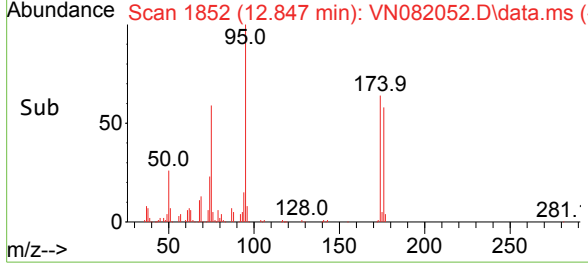
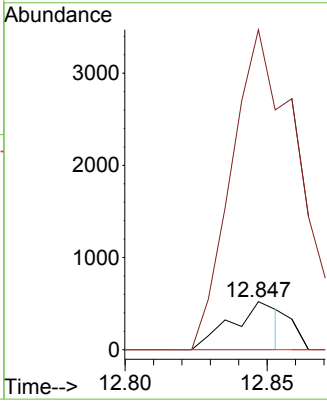
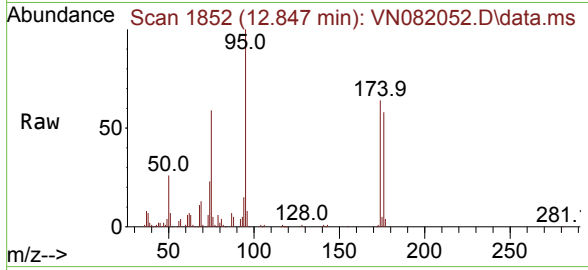




#71
 Bromoform
 Concen: 0.439 ug/l
 RT: 12.847 min Scan# 1806
 Delta R.T. 0.271 min
 Lab File: VN082052.D
 Acq: 09 May 2024 15:46

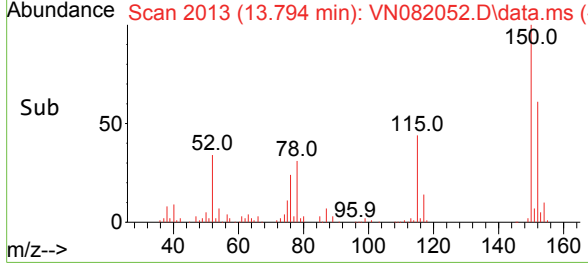
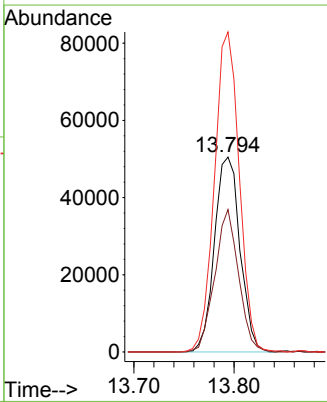
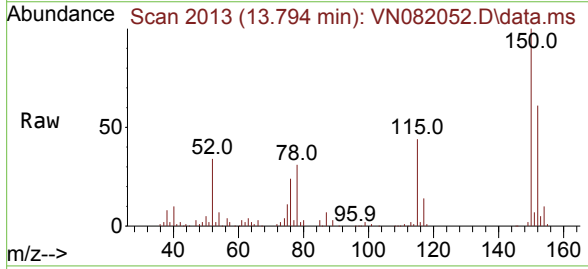
Instrument : MSVOA_N
 ClientSampleId :

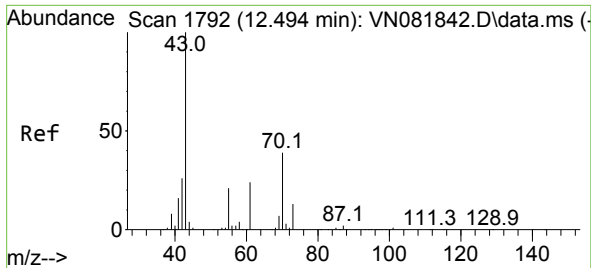
Tgt Ion	Resp	Lower	Upper
173	100		
175	645.5	24.6	74.0#
254	0.0	0.0	0.0



#72
 1,4-Dichlorobenzene-d4
 Concen: 50.000 ug/l
 RT: 13.794 min Scan# 2013
 Delta R.T. 0.000 min
 Lab File: VN082052.D
 Acq: 09 May 2024 15:46

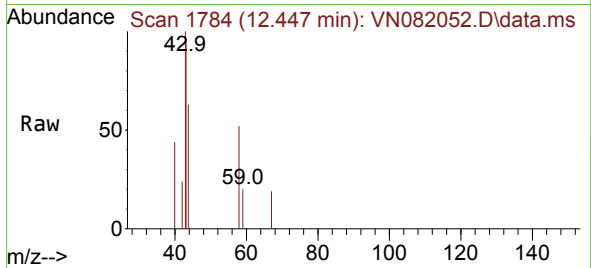
Tgt Ion	Resp	Lower	Upper
152	100		
115	68.2	30.4	91.3
150	159.5	0.0	353.2





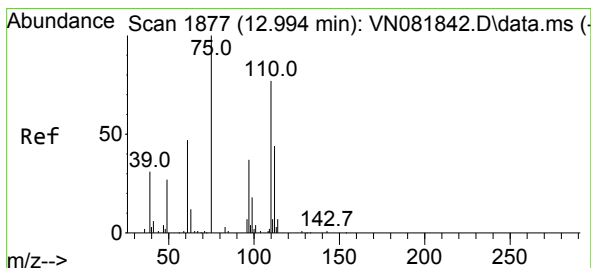
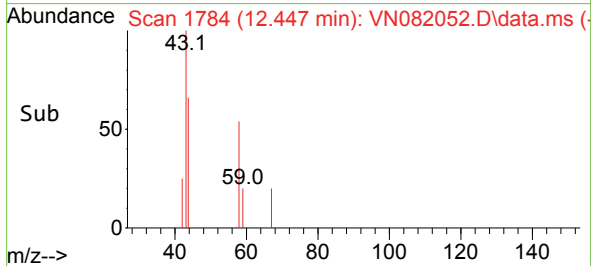
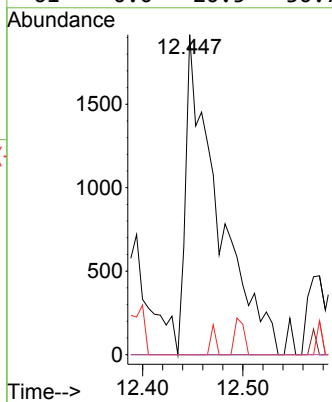
#74
 N-amy1 acetate
 Concen: 0.966 ug/l
 RT: 12.447 min Scan# 11
 Delta R.T. -0.047 min
 Lab File: VN082052.D
 Acq: 09 May 2024 15:46

Instrument :
 MSVOA_N
 ClientSampleId :



Tgt Ion: 43 Resp: 4274

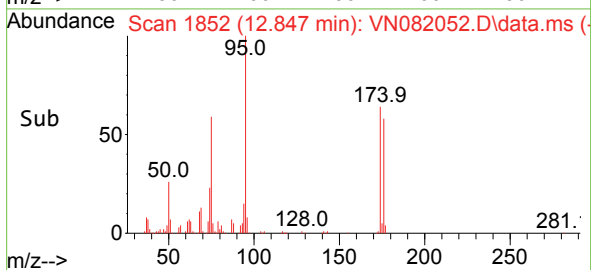
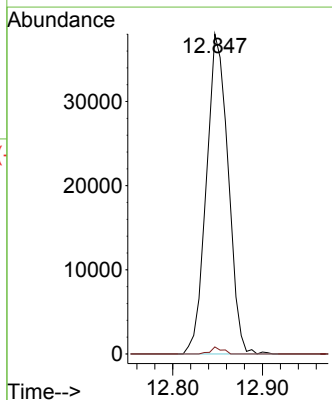
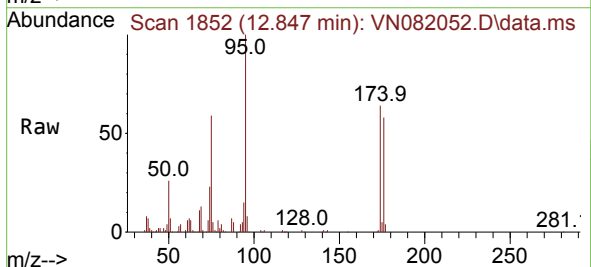
Ion	Ratio	Lower	Upper
43	100		
70	0.0	39.0	58.4#
55	0.0	21.3	31.9#
61	0.0	20.5	30.7#

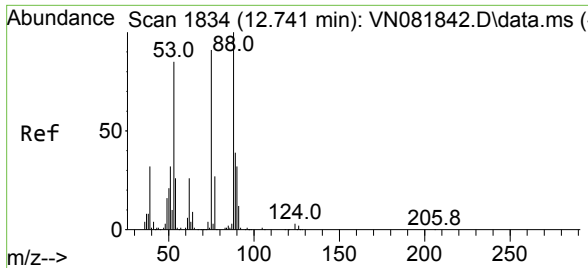


#76
 1,2,3-Trichloropropane
 Concen: 27.636 ug/l
 RT: 12.847 min Scan# 1852
 Delta R.T. -0.147 min
 Lab File: VN082052.D
 Acq: 09 May 2024 15:46

Tgt Ion: 75 Resp: 64042

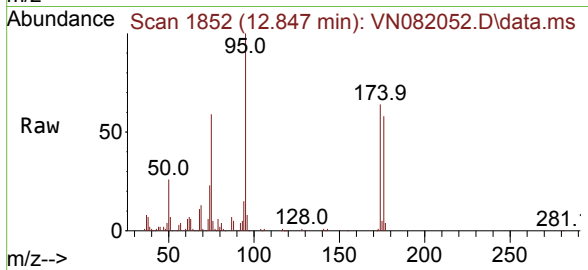
Ion	Ratio	Lower	Upper
75	100		
77	1.2	90.5	271.3#





#81
 trans-1,4-Dichloro-2-butene
 Concen: 56.631 ug/l
 RT: 12.847 min Scan# 11
 Delta R.T. 0.106 min
 Lab File: VN082052.D
 Acq: 09 May 2024 15:46

Instrument :
 MSVOA_N
 ClientSampleId :



Tgt Ion: 75 Resp: 64042
 Ion Ratio Lower Upper
 75 100
 53 0.0 72.9 109.3#
 89 0.0 39.1 58.7#

