

Data Path : Z:\VOASRV\HPCHEM1\MSVOA N\DATA\VN051120\
 Data File : VN061386.D
 Acq On : 11 May 2020 14:59
 Operator : JC/MD
 Sample : L2544-11DL 5X
 Misc : 5.00mL/MSVOA N/WATER
 ALS Vial : 9 Sample Multiplier: 1

Instrument :
 MSVOA_N
 ClientSampled :

Quant Time: May 12 02:14:45 2020
 Quant Method : Z:\VOASRV\HPCHEM1\MSVOA_N\METHODS\82N042720W.M
 Quant Title : SW846 8260
 QLast Update : Tue May 05 07:01:08 2020
 Response via : Initial Calibration

Internal Standards	R.T.	QIon	Response	Conc	Units	Dev(Min)
1) Pentafluorobenzene	7.62	168	104618	50.00	ug/l	0.00
34) 1,4-Difluorobenzene	8.55	114	189466	50.00	ug/l	0.00
63) Chlorobenzene-d5	11.38	117	178323	50.00	ug/l	0.00
72) 1,4-Dichlorobenzene-d4	13.32	152	78563	50.00	ug/l	0.00

System Monitoring Compounds

33) 1,2-Dichloroethane-d4	7.98	65	84402	50.99	ug/l	0.00
Spiked Amount	50.000		Recovery	=	101.98%	
35) Dibromofluoromethane	7.54	113	54935	49.03	ug/l	0.00
Spiked Amount	50.000		Recovery	=	98.06%	
50) Toluene-d8	10.06	98	231794	50.75	ug/l	0.00
Spiked Amount	50.000		Recovery	=	101.50%	
62) 4-Bromofluorobenzene	12.38	95	88439	51.46	ug/l	0.00
Spiked Amount	50.000		Recovery	=	102.92%	

Target Compounds

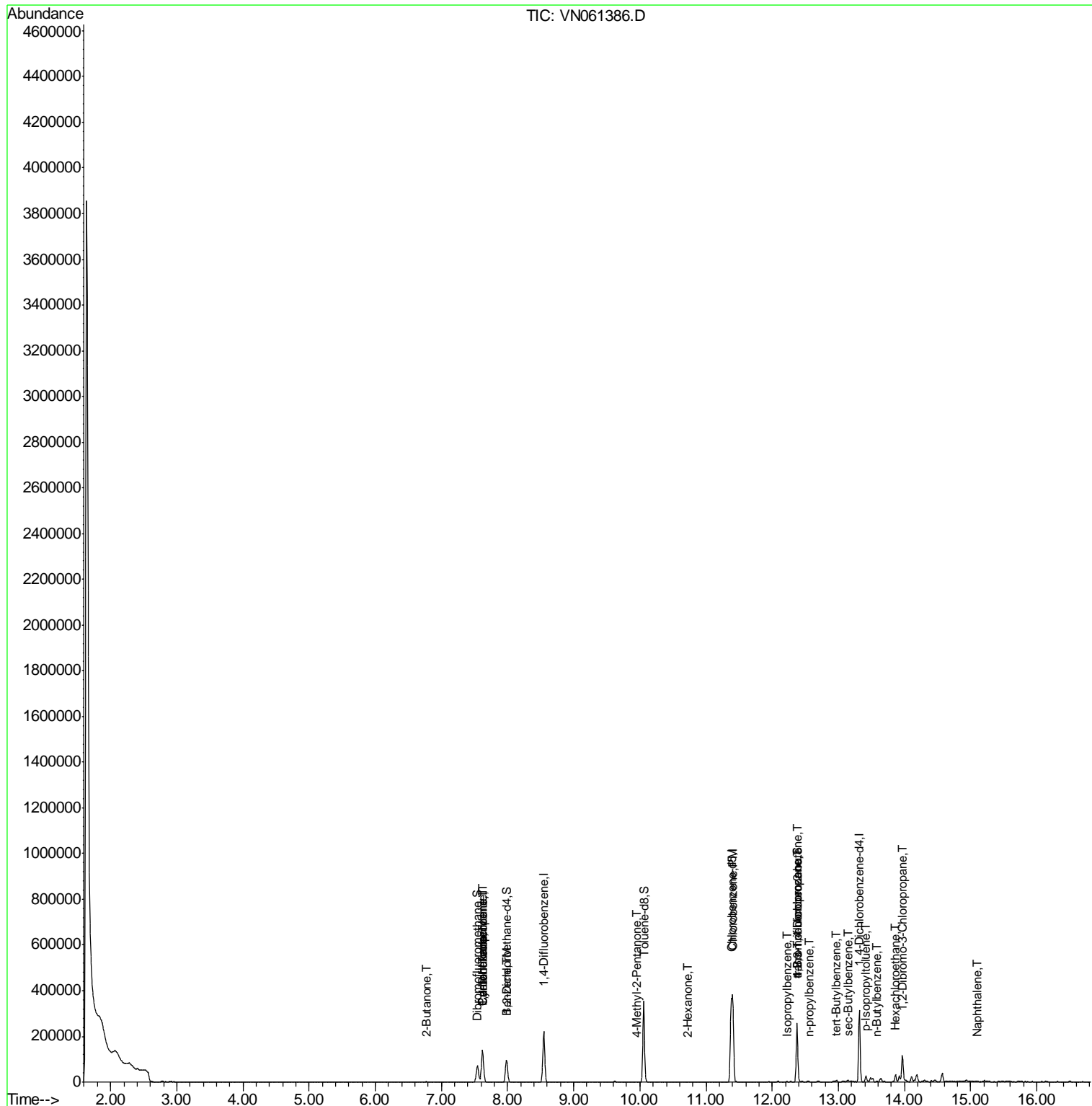
					Qvalue
16) Acetone	3.78	43	2761	Below Cal	90
25) 2-Butanone	6.78	43	272	0.278 ug/l #	53
31) Cyclohexane	7.63	56	2633	1.093 ug/l #	1
36) 1,1-Dichloropropene	7.62	75	9788	5.161 ug/l #	48
38) Carbon Tetrachloride	7.62	117	11296	8.516 ug/l #	16
40) Benzene	7.99	78	3284	0.581 ug/l	96
51) 4-Methyl-2-Pentanone	9.95	43	763	0.351 ug/l #	38
59) 2-Hexanone	10.72	43	591	0.374 ug/l #	27
65) Chlorobenzene	11.41	112	176732	49.962 ug/l	100
73) Isopropylbenzene	12.22	105	1932	0.335 ug/l	97
76) 1,2,3-Trichloropropane	12.37	75	48702	29.404 ug/l #	100
78) n-propylbenzene	12.57	91	1467	0.214 ug/l	88
81) trans-1,4-Dichloro-2-buten	12.37	75	48702	74.670 ug/l #	8
83) tert-Butylbenzene	12.97	119	3525	0.875 ug/l	92
85) sec-Butylbenzene	13.15	105	3974	0.723 ug/l #	71
86) p-Isopropyltoluene	13.42	119	15082	3.046 ug/l	97
89) n-Butylbenzene	13.59	91	1315	0.290 ug/l #	66
90) Hexachloroethane	13.87	117	1734	10.471 ug/l #	14
92) 1,2-Dibromo-3-Chloropropan	13.97	75	948	2.492 ug/l #	7
95) Naphthalene	15.11	128	1820	0.390 ug/l #	80

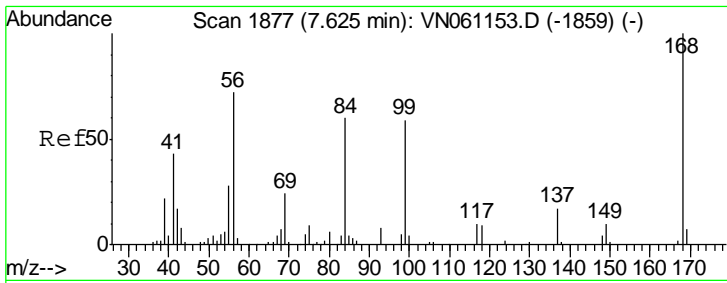
(#) = qualifier out of range (m) = manual integration (+) = signals summed

Data Path : Z:\VOASRV\HPCHEM1\MSVOA N\DATA\VN051120\
 Data File : VN061386.D
 Acq On : 11 May 2020 14:59
 Operator : JC/MD
 Sample : L2544-11DL 5X
 Misc : 5.00mL/MSVOA N/WATER
 ALS Vial : 9 Sample Multiplier: 1

Instrument :
 MSVOA_N
 ClientSampleId :

Quant Time: May 12 02:14:45 2020
 Quant Method : Z:\VOASRV\HPCHEM1\MSVOA_N\METHODS\82N042720W.M
 Quant Title : SW846 8260
 QLast Update : Tue May 05 07:01:08 2020
 Response via : Initial Calibration

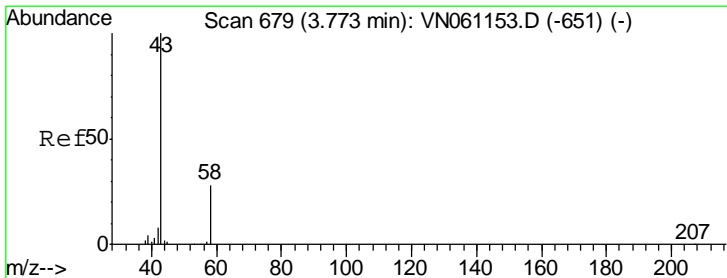
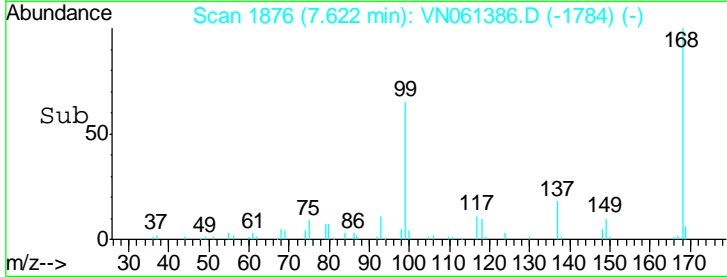
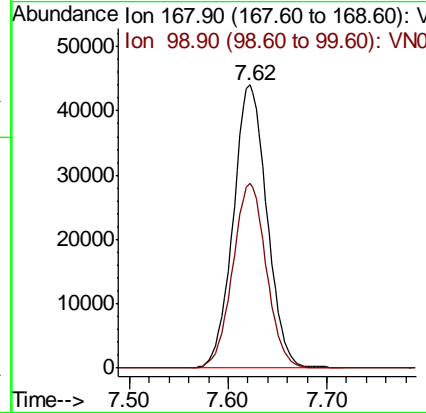
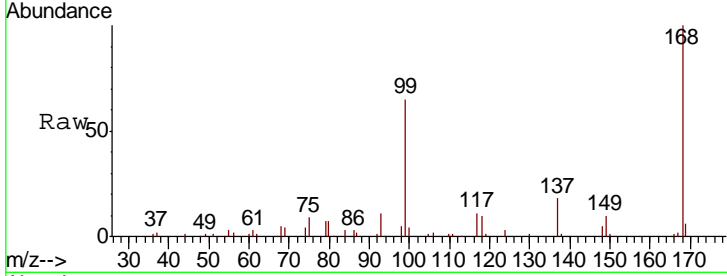




#1
 Pentafluorobenzene
 Concen: 50.000 ug/l
 RT: 7.62 min Scan# 1876
 Delta R.T. -0.00 min
 Lab File: VN061386.D
 Acq: 11 May 2020 14:59

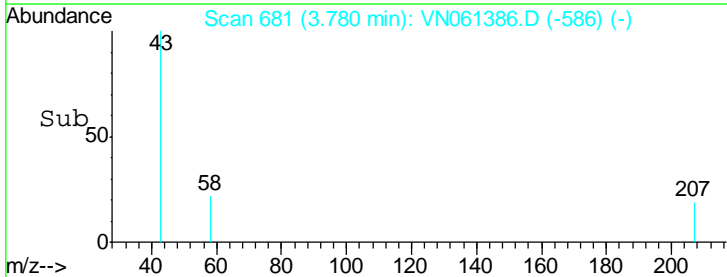
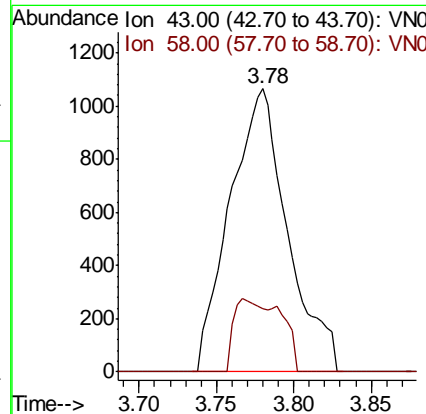
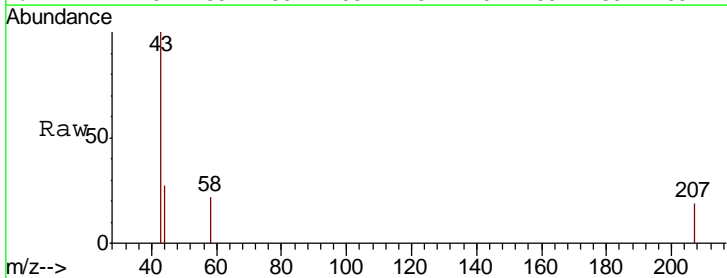
Instrument :
 MSVOA_N
 ClientSampled :

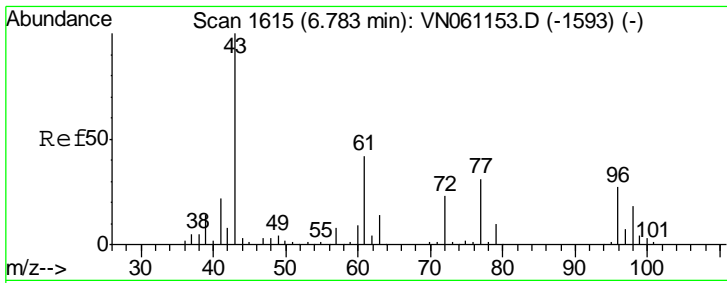
Tgt Ion: 168 Resp: 104618
 Ion Ratio Lower Upper
 168 100
 99 65.4 51.2 76.8



#16
 Acetone
 Concen: Below Cal
 RT: 3.78 min Scan# 681
 Delta R.T. 0.01 min
 Lab File: VN061386.D
 Acq: 11 May 2020 14:59

Tgt Ion: 43 Resp: 2761
 Ion Ratio Lower Upper
 43 100
 58 22.3 22.2 33.2

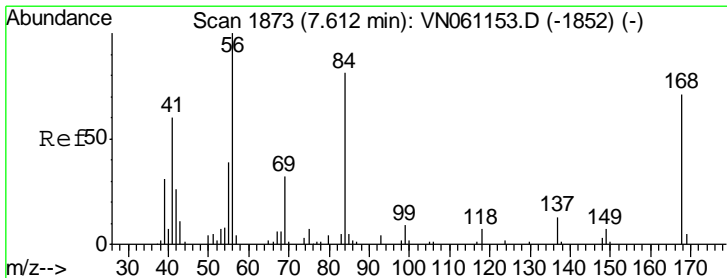
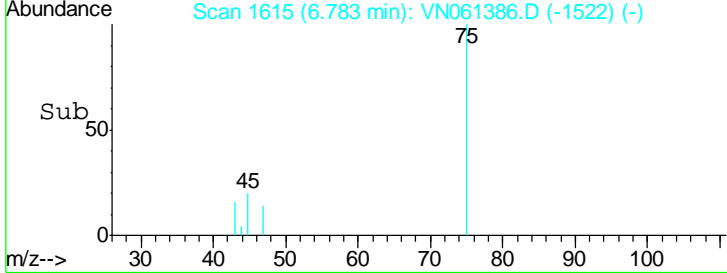
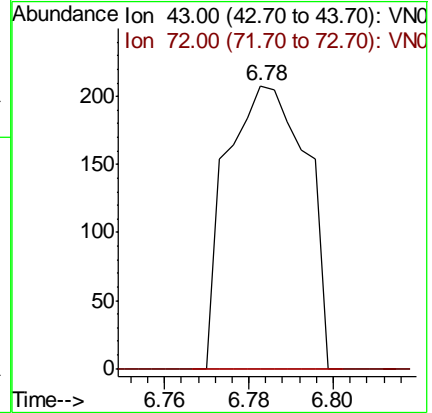
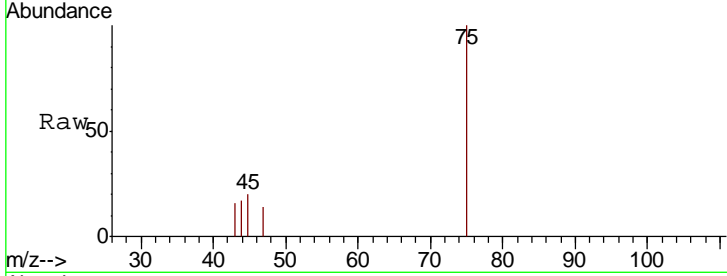




#25
 2-Butanone
 Concen: 0.278 ug/l
 RT: 6.78 min Scan# 1615
 Delta R.T. 0.00 min
 Lab File: VN061386.D
 Acq: 11 May 2020 14:59

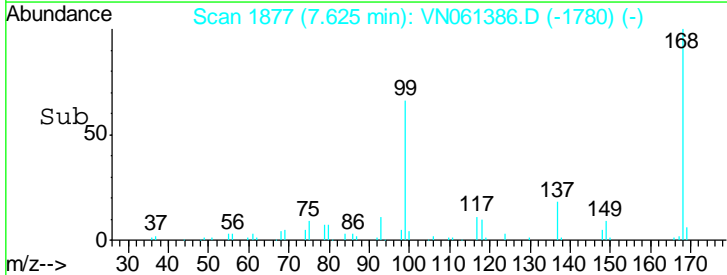
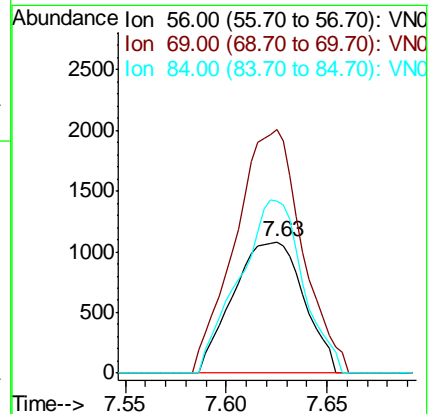
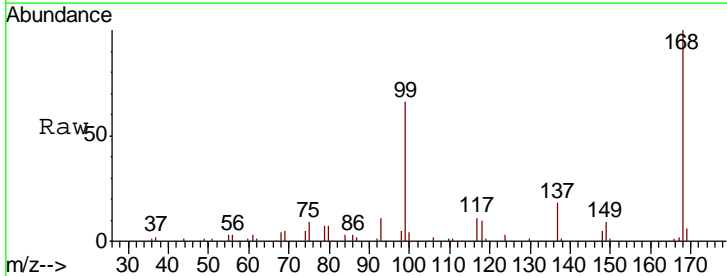
Instrument :
 MSVOA_N
 ClientSampled :

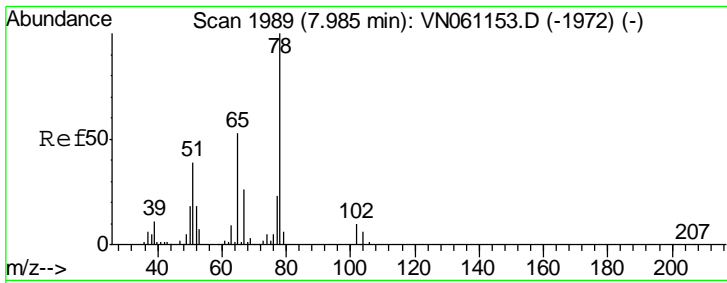
Tgt Ion	Resp	Lower	Upper
43	100		
72	0.0	18.2	27.4#



#31
 Cyclohexane
 Concen: 1.093 ug/l
 RT: 7.63 min Scan# 1877
 Delta R.T. 0.01 min
 Lab File: VN061386.D
 Acq: 11 May 2020 14:59

Tgt Ion	Resp	Lower	Upper
56	100		
69	185.0	25.7	38.5#
84	130.3	64.6	97.0#

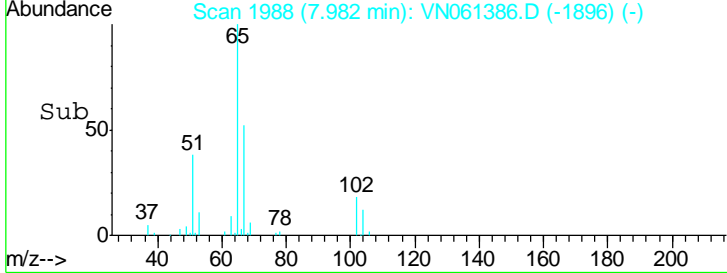
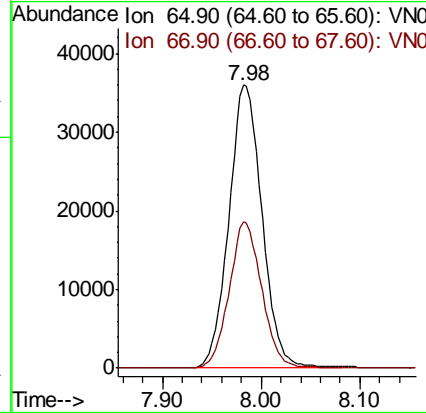
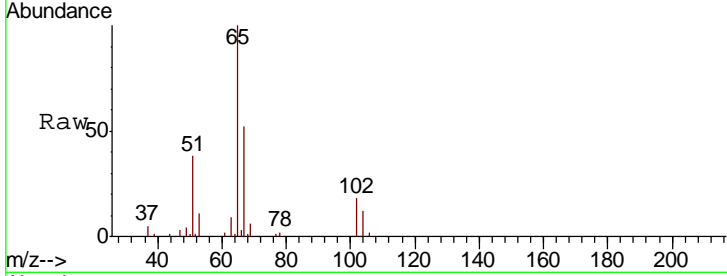




#33
 1,2-Dichloroethane-d4
 Concen: 50.986 ug/l
 RT: 7.98 min Scan# 1988
 Delta R.T. -0.00 min
 Lab File: VN061386.D
 Acq: 11 May 2020 14:59

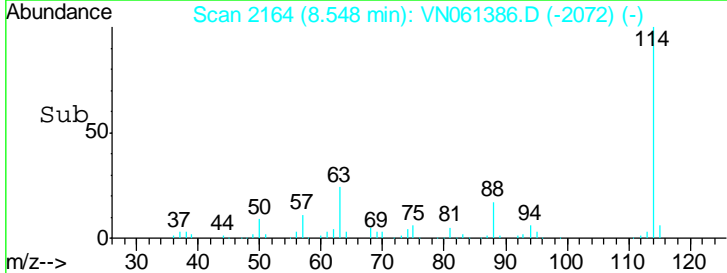
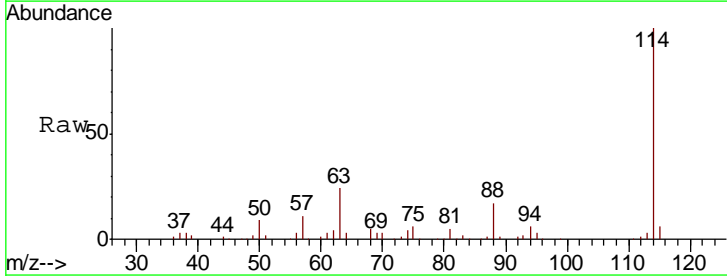
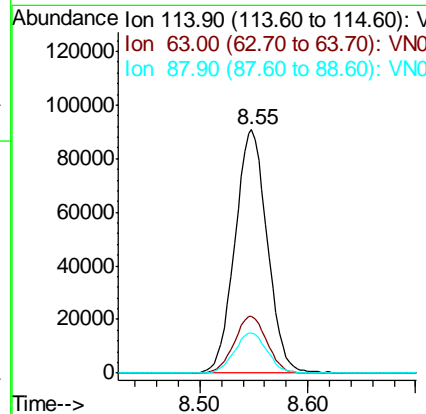
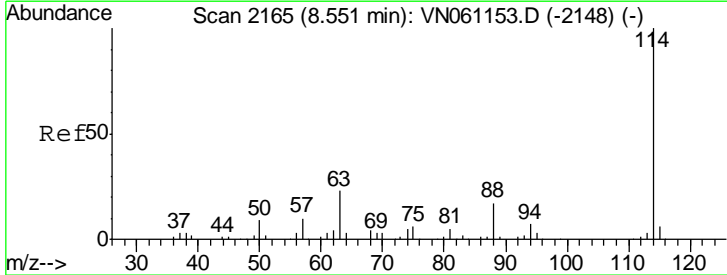
Instrument :
 MSVOA_N
 ClientSampled :

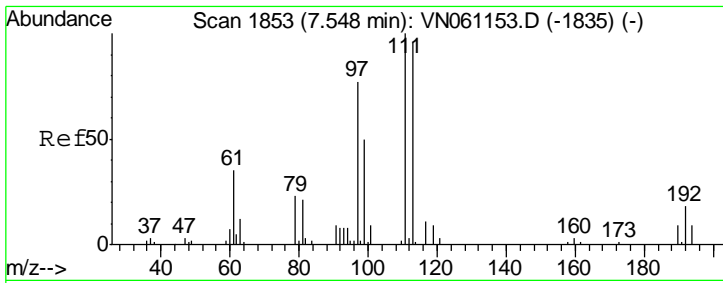
Tgt Ion	Resp	Lower	Upper
65	100		
67	50.7	0.0	101.6



#34
 1,4-Difluorobenzene
 Concen: 50.000 ug/l
 RT: 8.55 min Scan# 2164
 Delta R.T. -0.00 min
 Lab File: VN061386.D
 Acq: 11 May 2020 14:59

Tgt Ion	Resp	Lower	Upper
114	100		
63	23.5	0.0	46.6
88	16.6	0.0	33.4

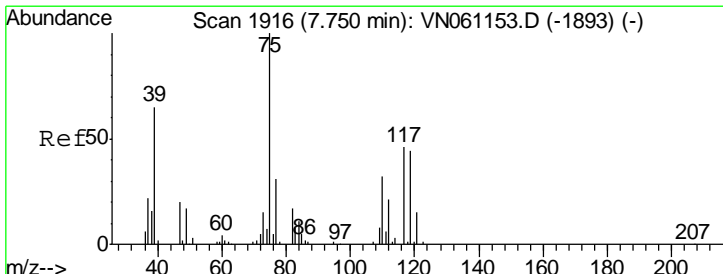
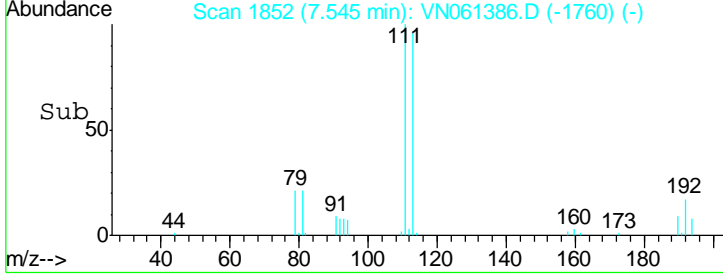
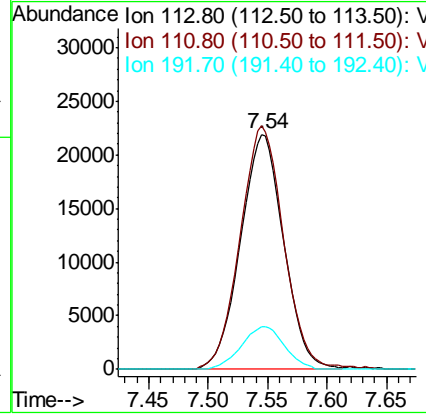
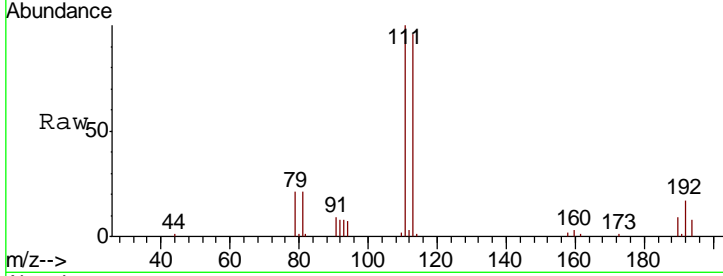




#35
 Dibromofluoromethane
 Concen: 49.033 ug/l
 RT: 7.54 min Scan# 1852
 Delta R.T. -0.00 min
 Lab File: VN061386.D
 Acq: 11 May 2020 14:59

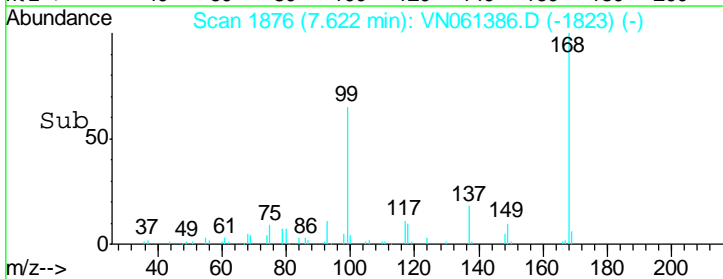
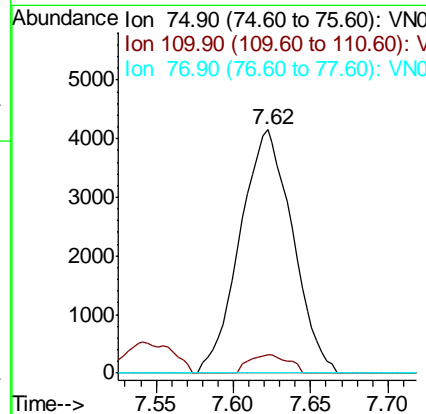
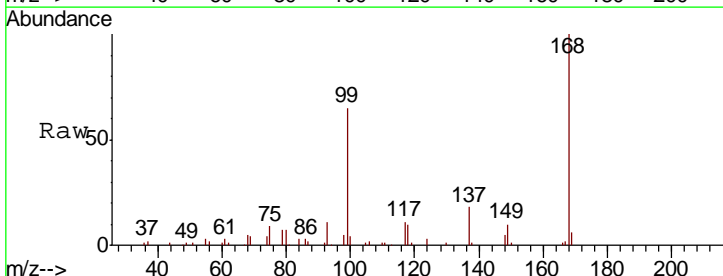
Instrument :
 MSVOA_N
 ClientSampled :

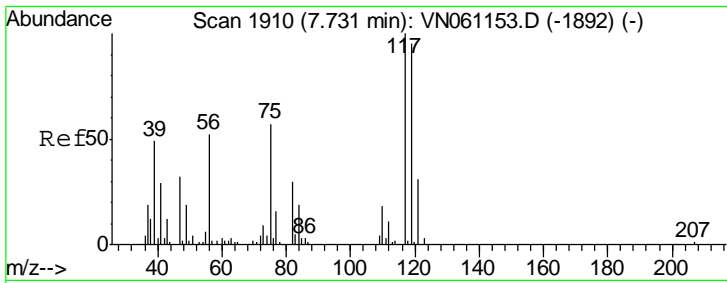
Tgt Ion	Resp	Lower	Upper
113	100		
111	104.8	82.9	124.3
192	18.2	14.7	22.1



#36
 1,1-Dichloropropene
 Concen: 5.161 ug/l
 RT: 7.62 min Scan# 1876
 Delta R.T. -0.13 min
 Lab File: VN061386.D
 Acq: 11 May 2020 14:59

Tgt Ion	Resp	Lower	Upper
75	100		
110	5.6	16.0	48.0#
77	0.0	24.6	37.0#

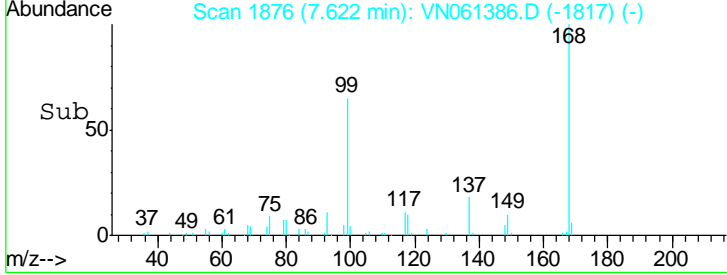
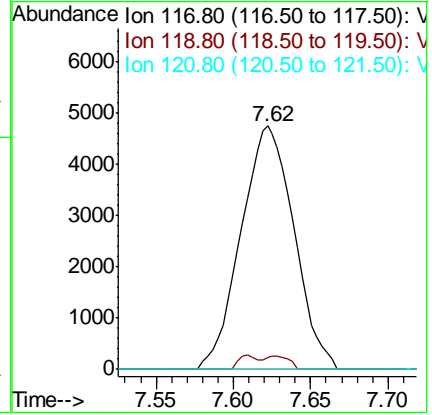
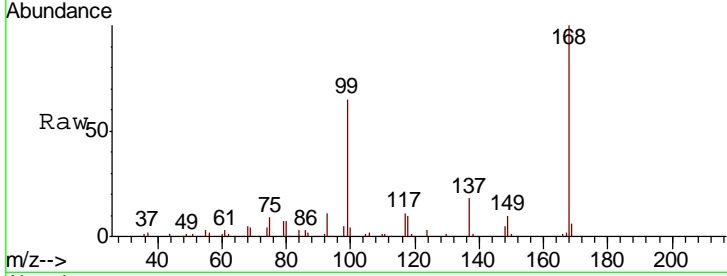




#38
 Carbon Tetrachloride
 Concen: 8.516 ug/l
 RT: 7.62 min Scan# 1876
 Delta R.T. -0.11 min
 Lab File: VN061386.D
 Acq: 11 May 2020 14:59

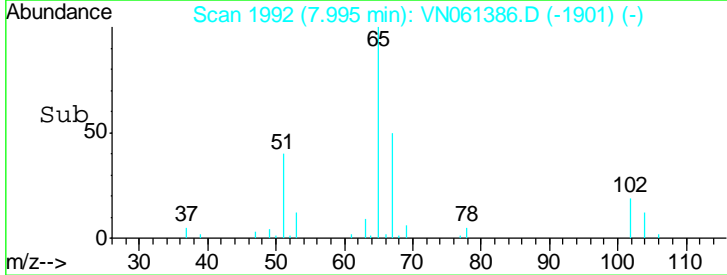
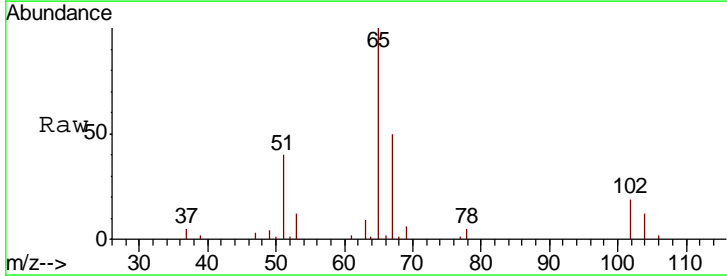
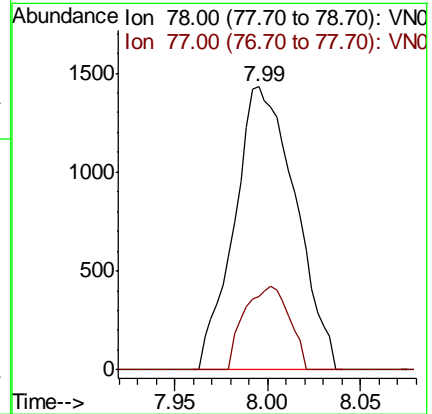
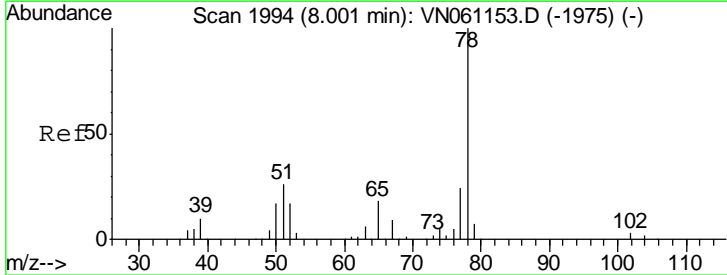
Instrument :
 MSVOA_N
 ClientSampled :

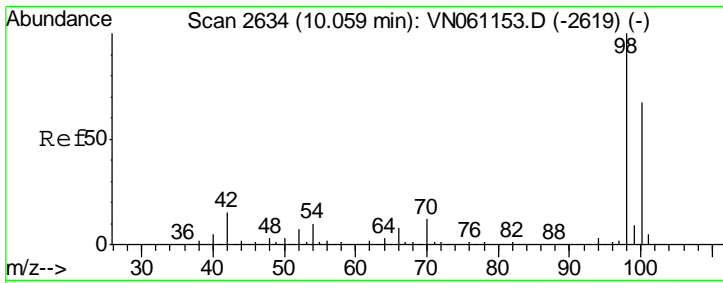
Tgt Ion	Resp	Lower	Upper
117	11296		
119	4.7	75.8	113.6#
121	0.0	24.7	37.1#



#40
 Benzene
 Concen: 0.581 ug/l
 RT: 7.99 min Scan# 1992
 Delta R.T. -0.01 min
 Lab File: VN061386.D
 Acq: 11 May 2020 14:59

Tgt Ion	Resp	Lower	Upper
78	3284		
77	25.9	19.0	28.6

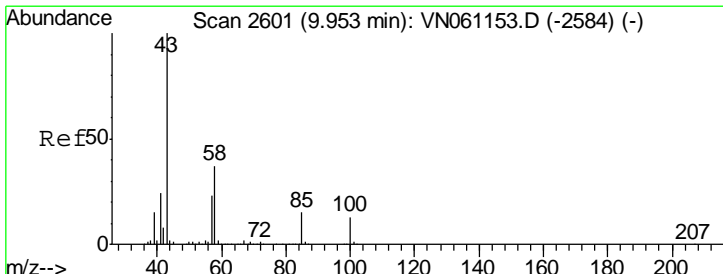
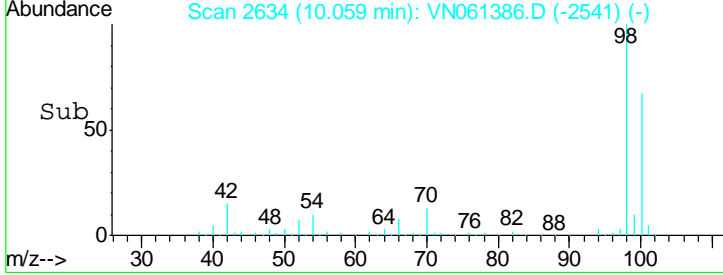
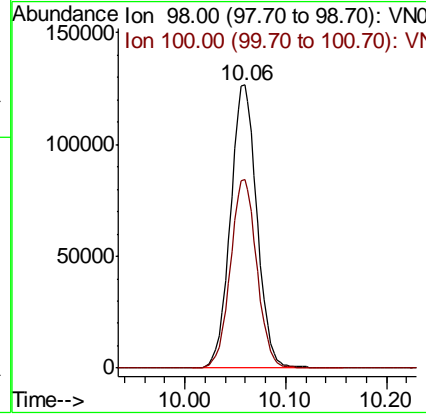
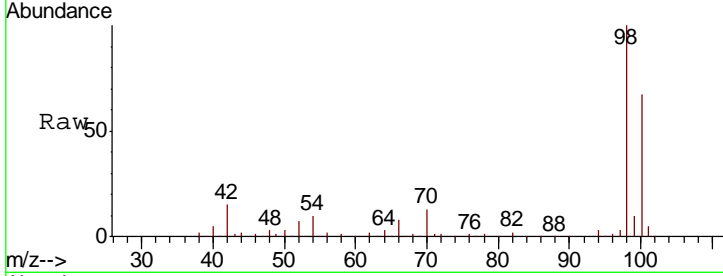




#50
 Toluene-d8
 Concen: 50.752 ug/l
 RT: 10.06 min Scan# 2634
 Delta R.T. 0.00 min
 Lab File: VN061386.D
 Acq: 11 May 2020 14:59

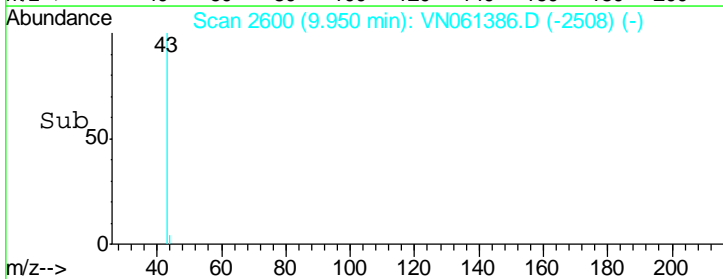
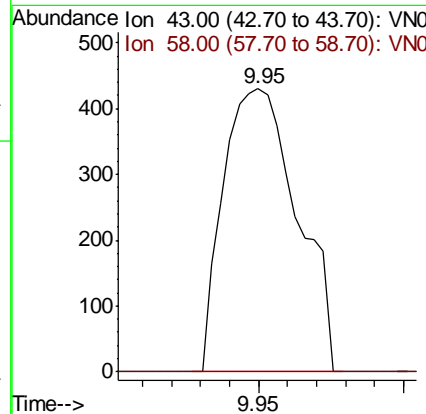
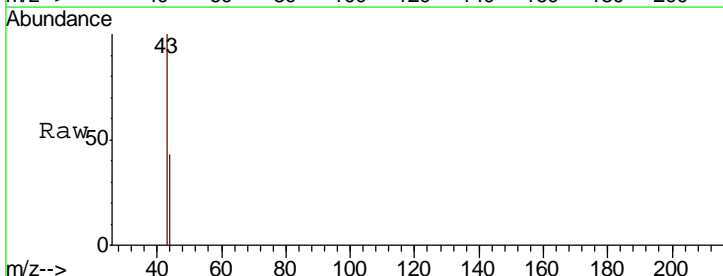
Instrument :
 MSVOA_N
 ClientSampled :

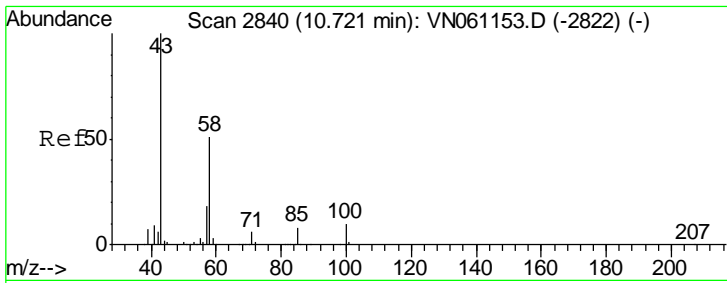
Tgt Ion: 98 Resp: 231794
 Ion Ratio Lower Upper
 98 100
 100 66.6 53.4 80.0



#51
 4-Methyl-2-Pentanone
 Concen: 0.351 ug/l
 RT: 9.95 min Scan# 2600
 Delta R.T. -0.00 min
 Lab File: VN061386.D
 Acq: 11 May 2020 14:59

Tgt Ion: 43 Resp: 763
 Ion Ratio Lower Upper
 43 100
 58 0.0 29.1 43.7#

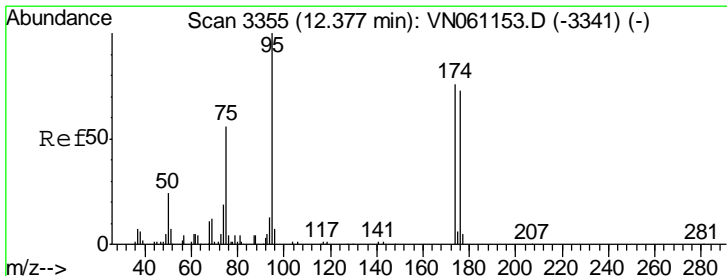
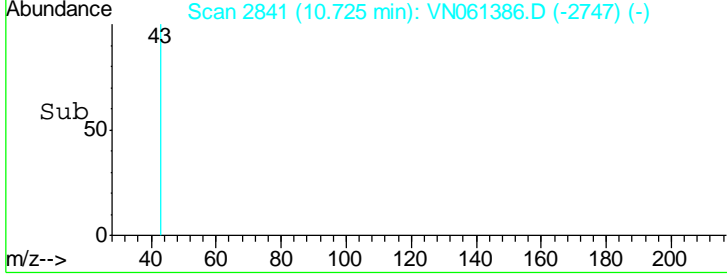
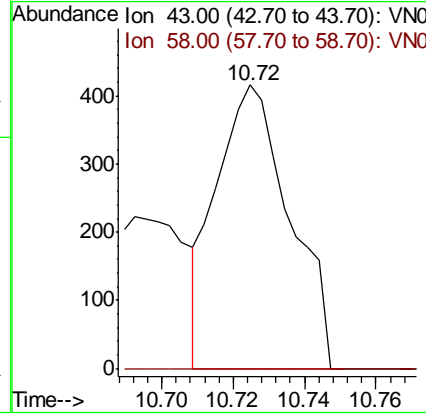
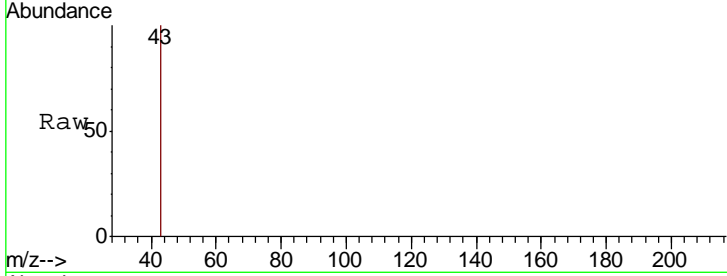




#59
 2-Hexanone
 Concen: 0.374 ug/l
 RT: 10.72 min Scan# 2841
 Delta R.T. 0.00 min
 Lab File: VN061386.D
 Acq: 11 May 2020 14:59

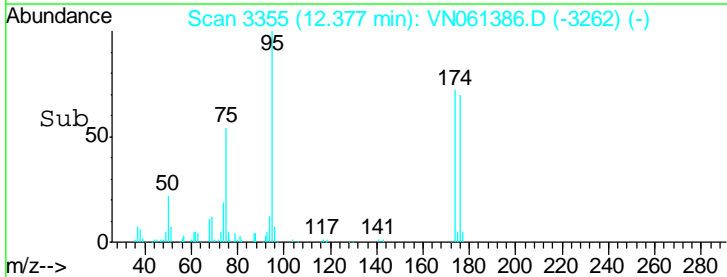
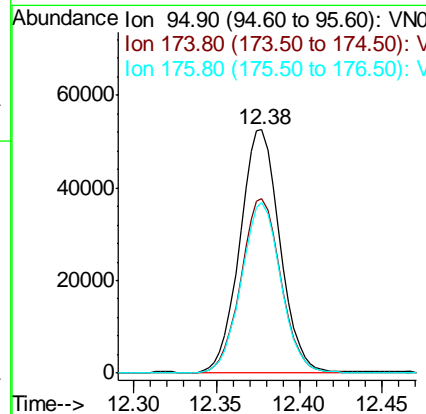
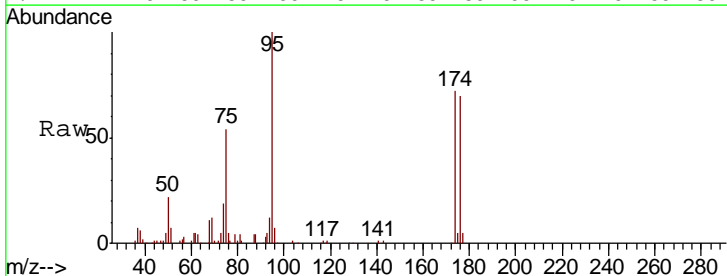
Instrument : MSVOA_N
 ClientSampled :

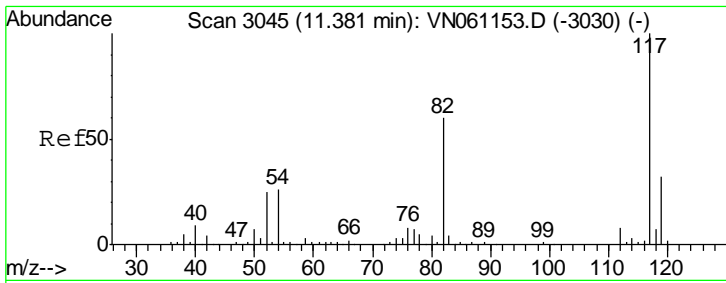
Tgt Ion	Resp	Lower	Upper
43	100		
58	0.0	25.4	76.4#



#62
 4-Bromofluorobenzene
 Concen: 51.457 ug/l
 RT: 12.38 min Scan# 3355
 Delta R.T. 0.00 min
 Lab File: VN061386.D
 Acq: 11 May 2020 14:59

Tgt Ion	Resp	Lower	Upper
95	100		
174	71.4	0.0	149.4
176	69.0	0.0	144.8

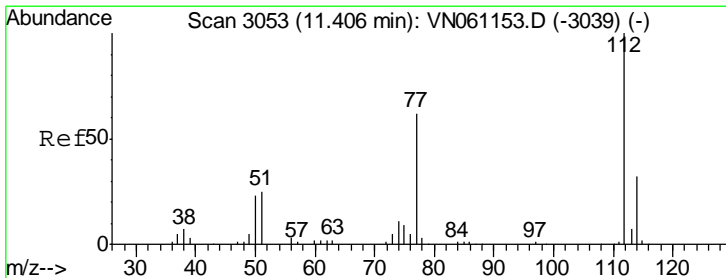
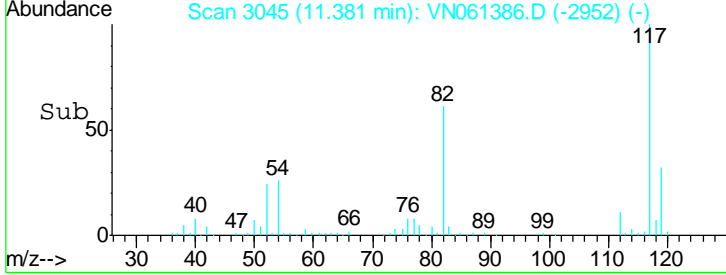
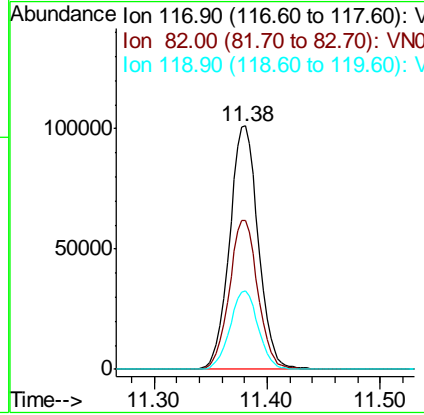
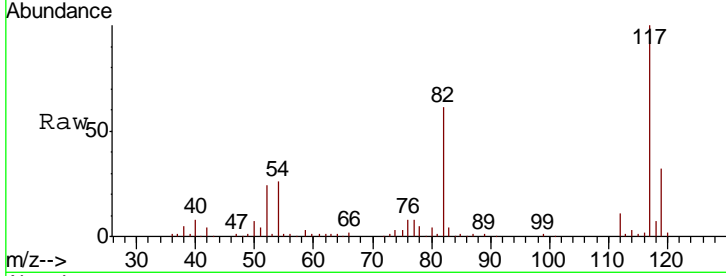




#63
 Chlorobenzene-d5
 Concen: 50.000 ug/l
 RT: 11.38 min Scan# 3045
 Delta R.T. 0.00 min
 Lab File: VN061386.D
 Acq: 11 May 2020 14:59

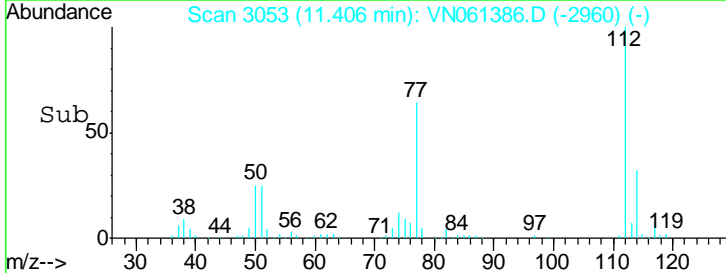
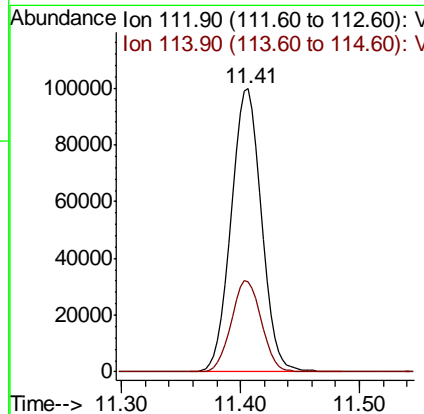
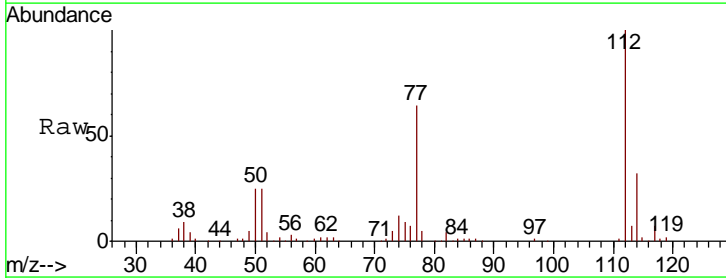
Instrument :
 MSVOA_N
 ClientSampled :

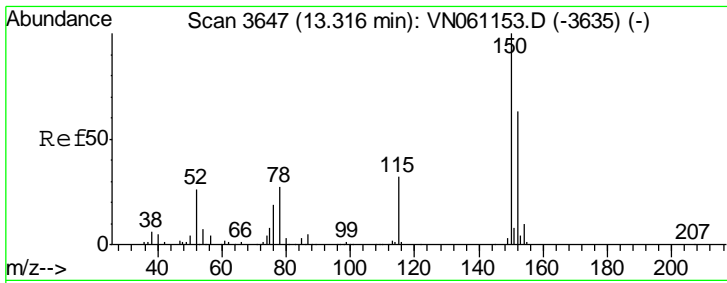
Tgt Ion	Resp	Lower	Upper
117	178323		
82	61.4	47.8	71.8
119	32.1	25.8	38.6



#65
 Chlorobenzene
 Concen: 49.962 ug/l
 RT: 11.41 min Scan# 3053
 Delta R.T. 0.00 min
 Lab File: VN061386.D
 Acq: 11 May 2020 14:59

Tgt Ion	Resp	Lower	Upper
112	176732		
114	31.9	25.4	38.2

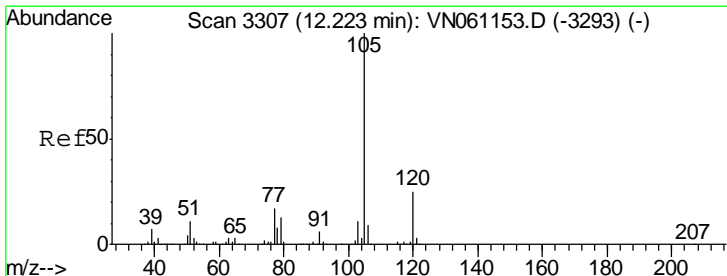
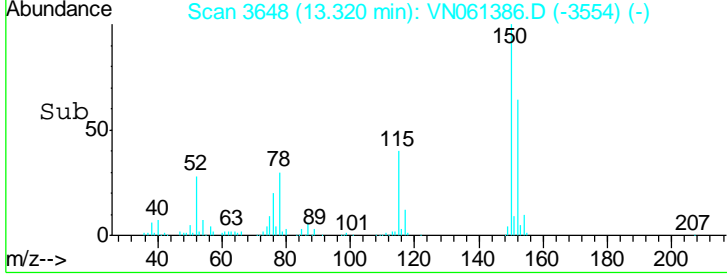
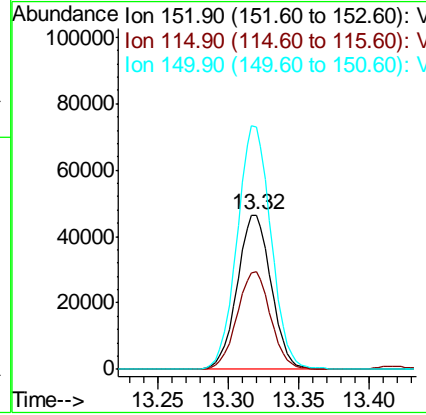
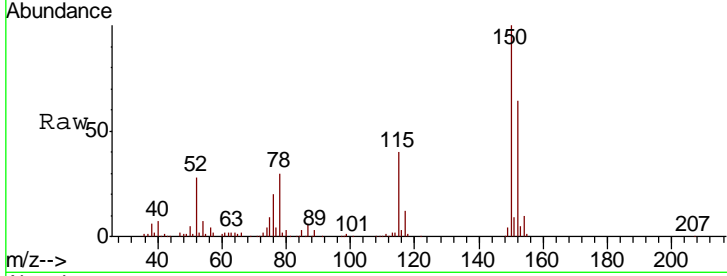




#72
 1,4-Dichlorobenzene-d4
 Concen: 50.000 ug/l
 RT: 13.32 min Scan# 3648
 Delta R.T. 0.00 min
 Lab File: VN061386.D
 Acq: 11 May 2020 14:59

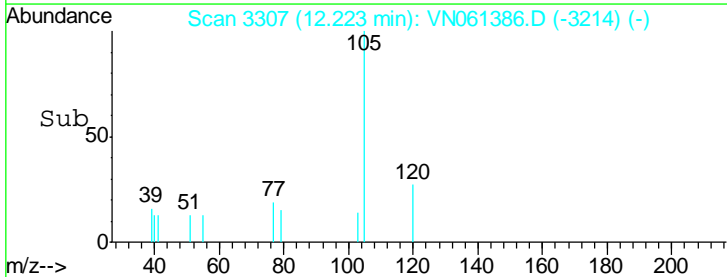
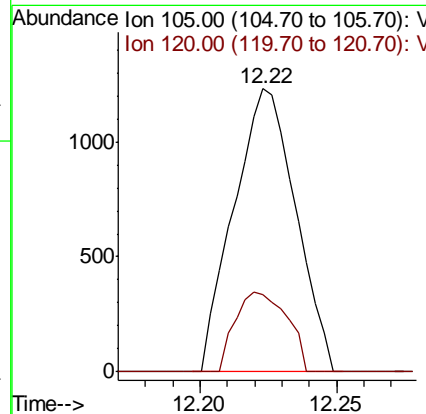
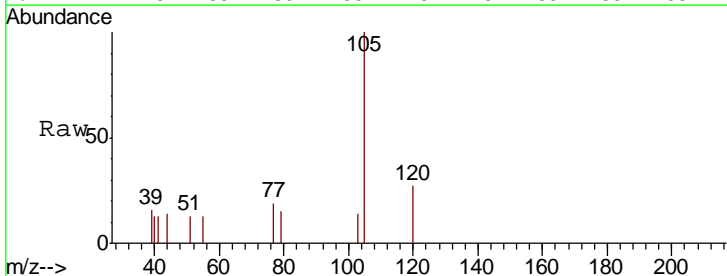
Instrument : MSVOA_N
 ClientSampled :

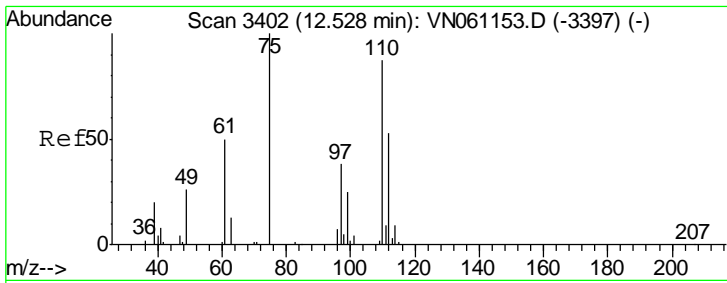
Tgt Ion	Resp	Lower	Upper
152	100		
115	62.2	31.0	93.0
150	156.9	0.0	351.8



#73
 Isopropylbenzene
 Concen: 0.335 ug/l
 RT: 12.22 min Scan# 3307
 Delta R.T. 0.00 min
 Lab File: VN061386.D
 Acq: 11 May 2020 14:59

Tgt Ion	Resp	Lower	Upper
105	100		
120	23.8	12.6	37.8

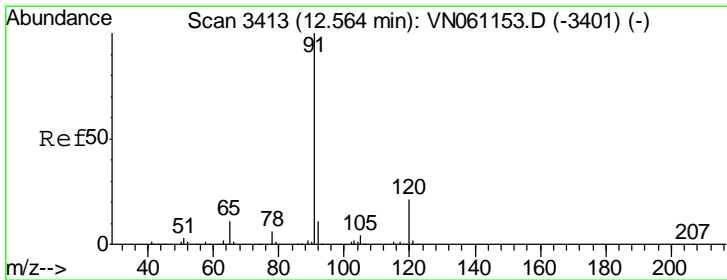
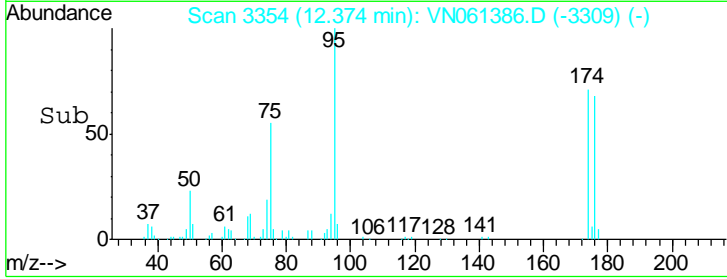
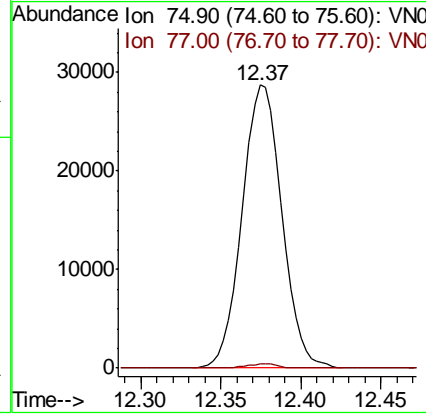
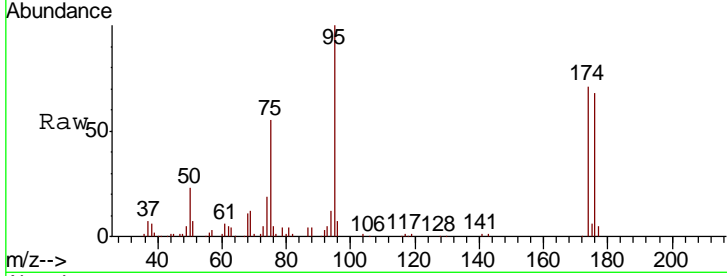




#76
 1,2,3-Trichloropropane
 Concen: 29.404 ug/l
 RT: 12.37 min Scan# 3354
 Delta R.T. -0.15 min
 Lab File: VN061386.D
 Acq: 11 May 2020 14:59

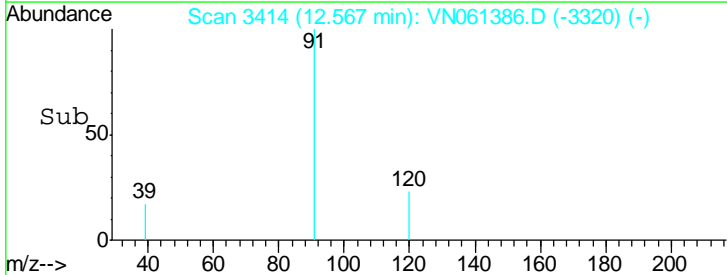
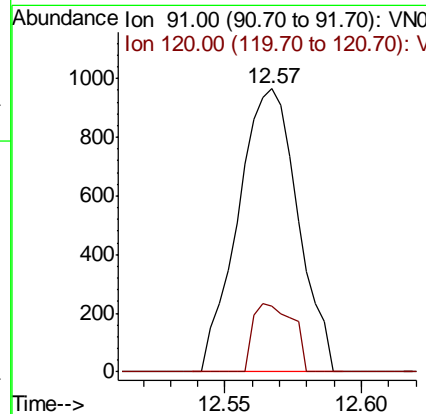
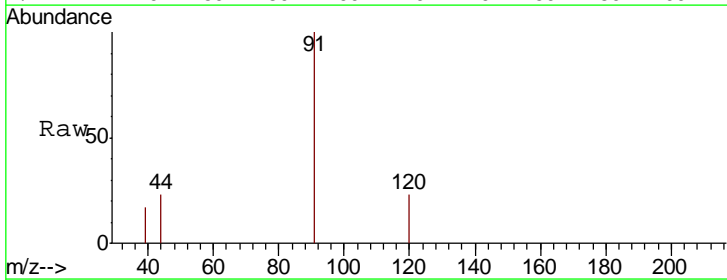
Instrument : MSVOA_N
 ClientSampled :

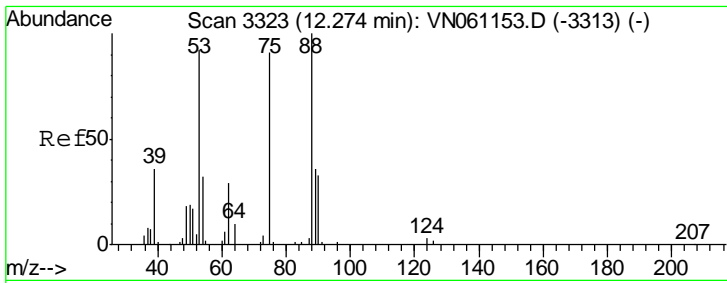
Tgt Ion	Resp	Lower	Upper
75	48702		
75	100		
77	1.1	0.0	0.0#



#78
 n-propylbenzene
 Concen: 0.214 ug/l
 RT: 12.57 min Scan# 3414
 Delta R.T. 0.00 min
 Lab File: VN061386.D
 Acq: 11 May 2020 14:59

Tgt Ion	Resp	Lower	Upper
91	1467		
91	100		
120	15.9	10.8	32.3

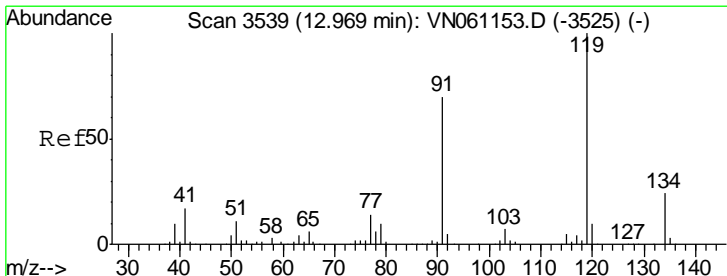
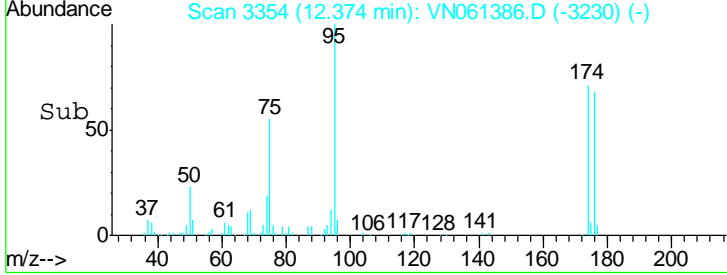
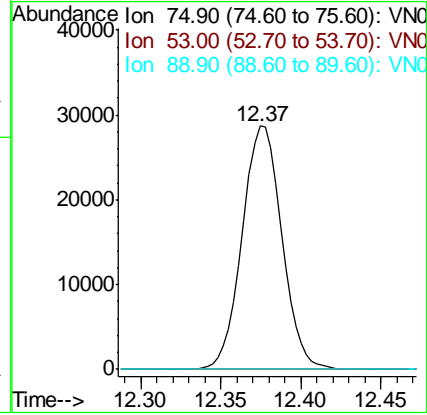
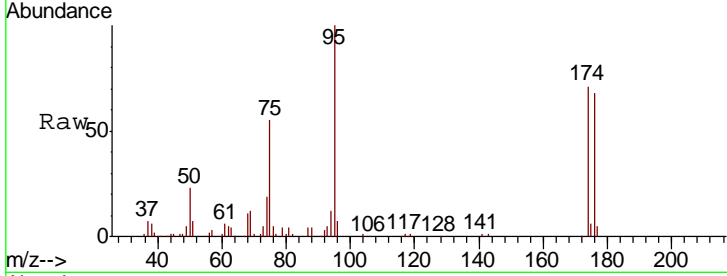




#81
 trans-1,4-Dichloro-2-butene
 Concen: 74.670 ug/l
 RT: 12.37 min Scan# 3354
 Delta R.T. 0.10 min
 Lab File: VN061386.D
 Acq: 11 May 2020 14:59

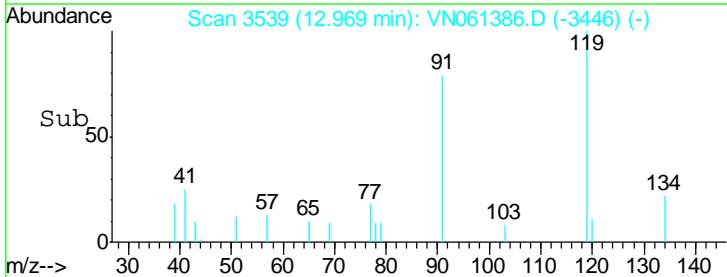
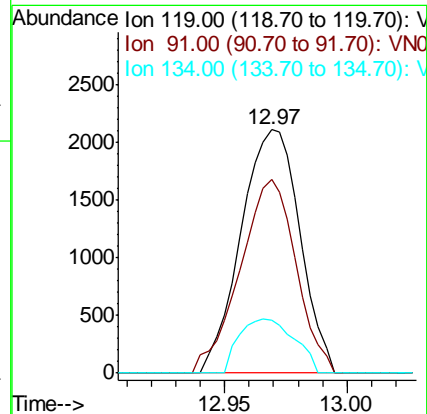
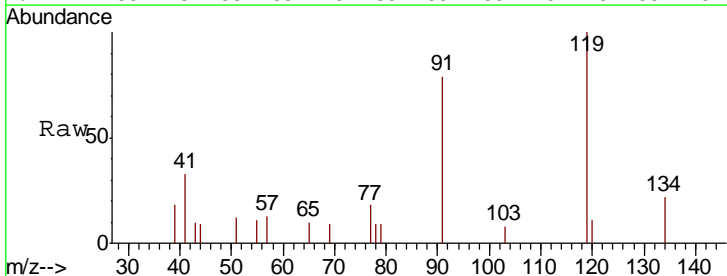
Instrument : MSVOA_N
 ClientSampled :

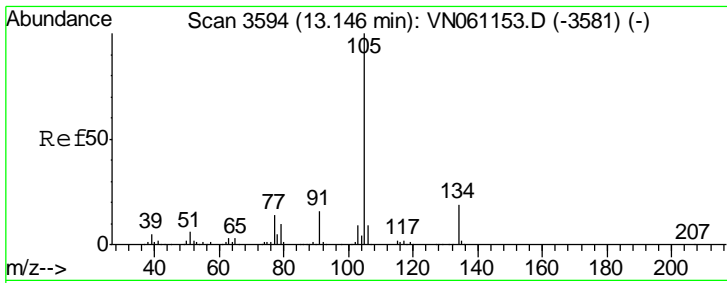
Tgt Ion	Resp	Lower	Upper
75	48702		
53	100	84.1	126.1#
89	0.0	35.2	52.8#



#83
 tert-Butylbenzene
 Concen: 0.875 ug/l
 RT: 12.97 min Scan# 3539
 Delta R.T. 0.00 min
 Lab File: VN061386.D
 Acq: 11 May 2020 14:59

Tgt Ion	Resp	Lower	Upper
119	3525		
91	100	34.8	104.4
134	21.0	12.9	38.7

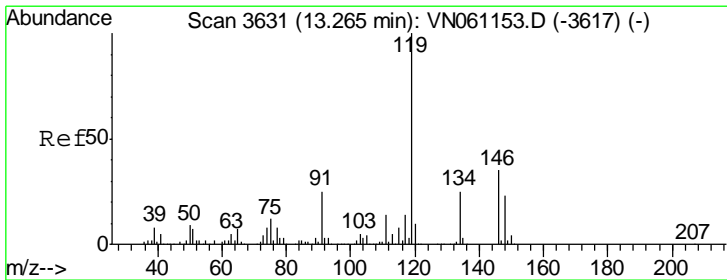
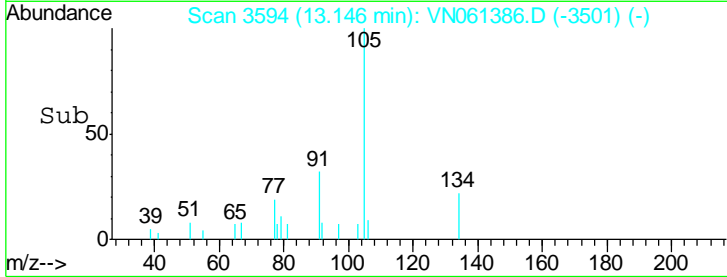
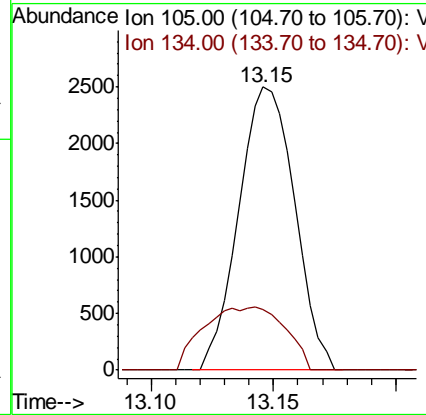
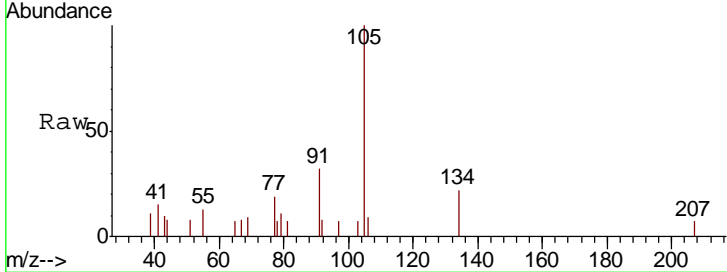




#85
 sec-Butylbenzene
 Concen: 0.723 ug/l
 RT: 13.15 min Scan# 3594
 Delta R.T. 0.00 min
 Lab File: VN061386.D
 Acq: 11 May 2020 14:59

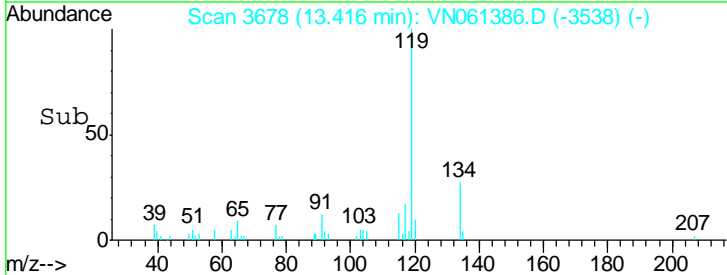
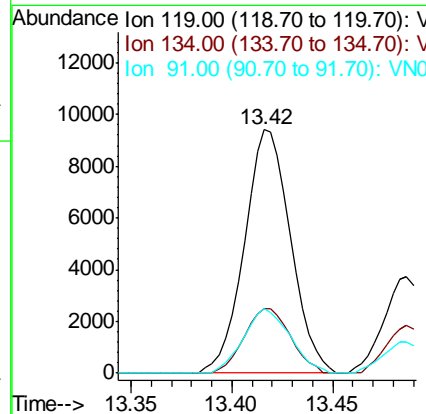
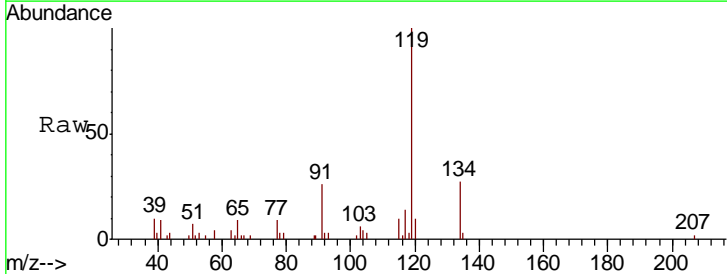
Instrument :
 MSVOA_N
 ClientSampled :

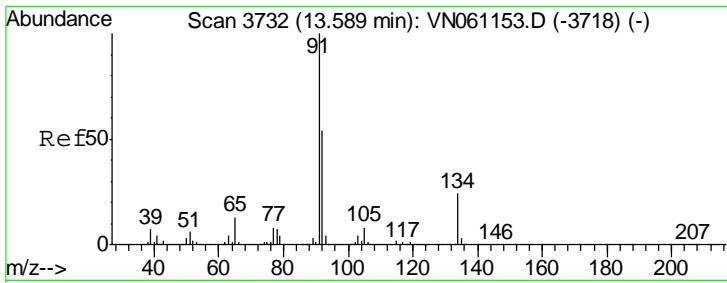
Tgt Ion	Resp	Lower	Upper
105	100		
134	32.5	9.6	28.8#



#86
 p-Isopropyltoluene
 Concen: 3.046 ug/l
 RT: 13.42 min Scan# 3678
 Delta R.T. 0.15 min
 Lab File: VN061386.D
 Acq: 11 May 2020 14:59

Tgt Ion	Resp	Lower	Upper
119	100		
134	26.7	12.6	37.6
91	26.6	12.7	38.0

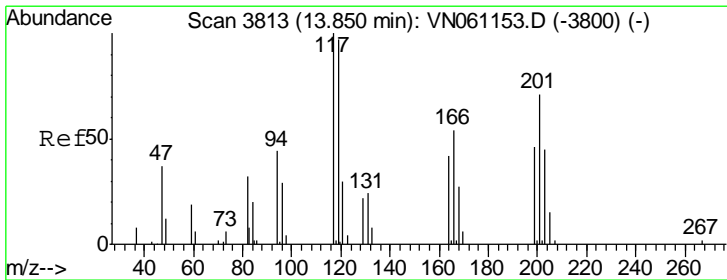
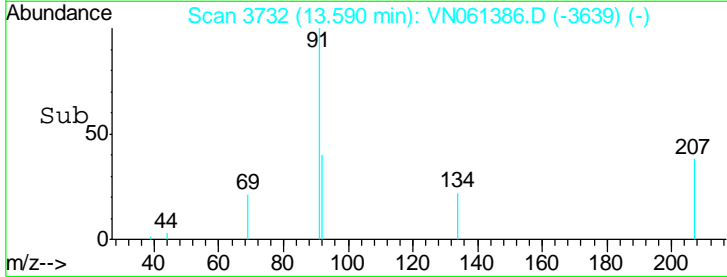
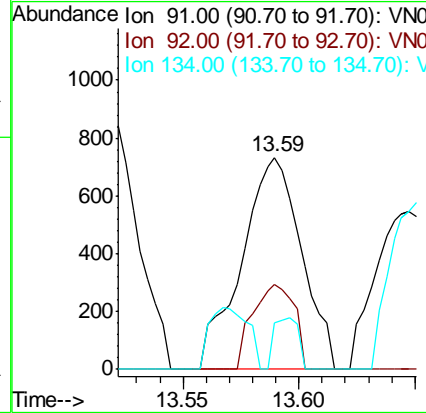
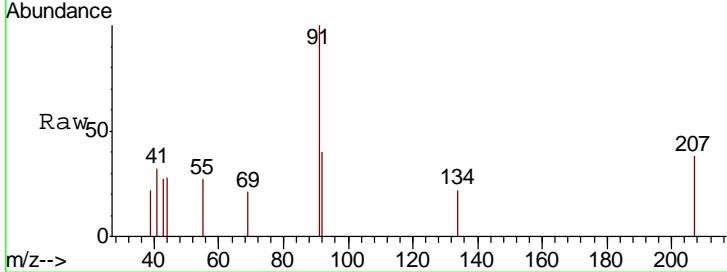




#89
 n-Butylbenzene
 Concen: 0.290 ug/l
 RT: 13.59 min Scan# 3732
 Delta R.T. 0.00 min
 Lab File: VN061386.D
 Acq: 11 May 2020 14:59

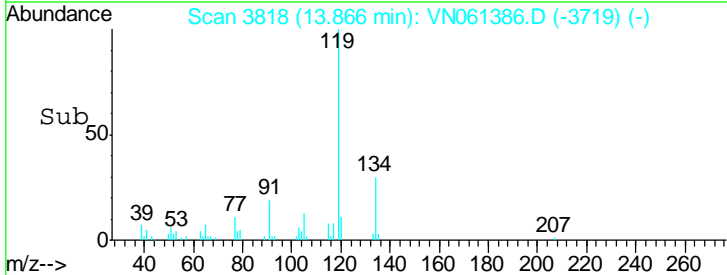
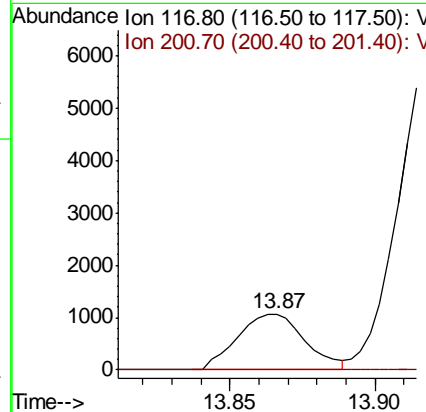
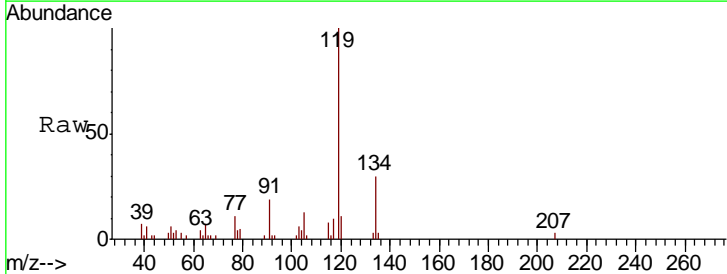
Instrument :
 MSVOA_N
 ClientSampled :

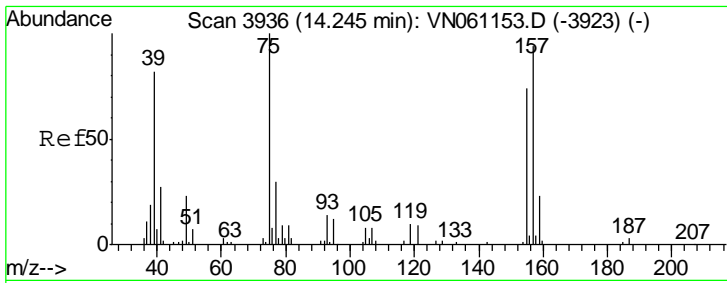
Tgt Ion	Resp	Lower	Upper
91	1315		
92	27.6	26.8	80.3
134	9.7	11.9	35.5#



#90
 Hexachloroethane
 Concen: 10.471 ug/l
 RT: 13.87 min Scan# 3818
 Delta R.T. 0.02 min
 Lab File: VN061386.D
 Acq: 11 May 2020 14:59

Tgt Ion	Resp	Lower	Upper
117	1734		
117	100		
201	0.0	35.5	106.7#

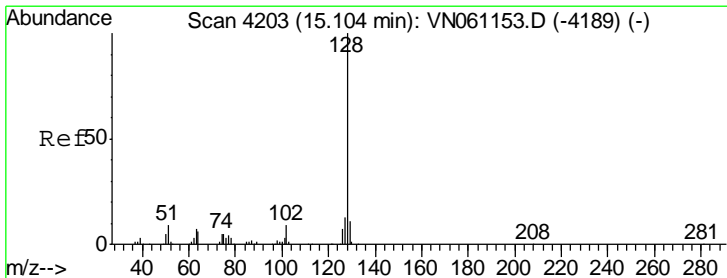
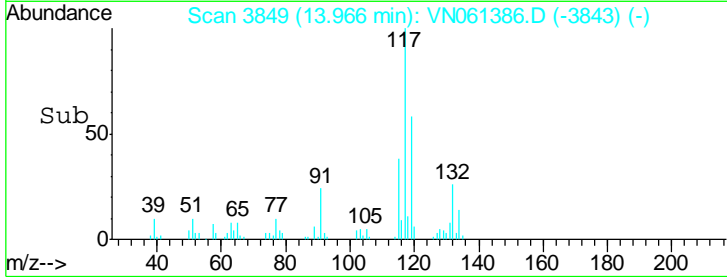
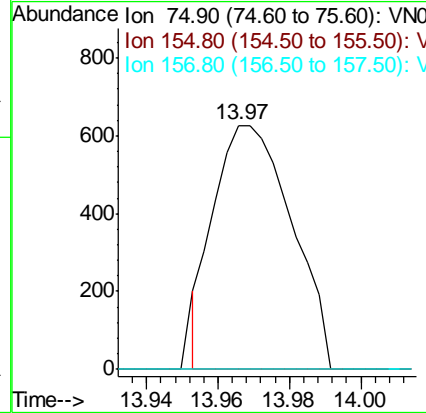
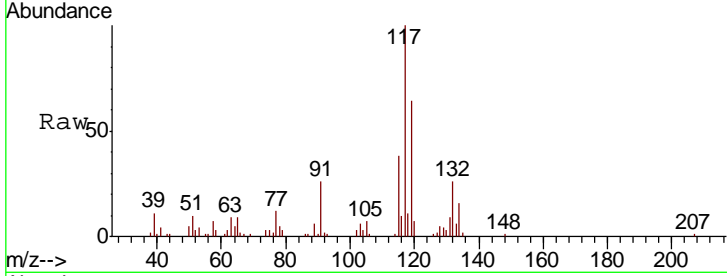




#92
 1,2-Dibromo-3-Chloropropane
 Concen: 2.492 ug/l
 RT: 13.97 min Scan# 3849
 Delta R.T. -0.28 min
 Lab File: VN061386.D
 Acq: 11 May 2020 14:59

Instrument : MSVOA_N
 ClientSampled :

Tgt Ion	Resp	Lower	Upper
75	100		
155	0.0	36.5	109.7#
157	0.0	46.6	139.7#



#95
 Naphthalene
 Concen: 0.390 ug/l
 RT: 15.11 min Scan# 4204
 Delta R.T. 0.00 min
 Lab File: VN061386.D
 Acq: 11 May 2020 14:59

Tgt Ion	Resp	Lower	Upper
128	100		
127	7.7	10.4	15.6#
129	0.0	8.7	13.1#

