

Data Path : Z:\voasrv\HPCHEM1\MSVOA_N\Data\VN051325\
 Data File : VN086610.D
 Acq On : 13 May 2025 18:37
 Operator : JC\MD
 Sample : PB167964ZHE#08
 Misc : 5.0mL/MSVOA_N/WATER
 ALS Vial : 22 Sample Multiplier: 1

Instrument :
 MSVOA_N
 ClientSampleId :
 PB167964ZHE#08

Manual Integrations
 APPROVED

Reviewed By : John Carlone 05/14/2025
 Supervised By : Mahesh Dadoda 05/14/2025

Quant Time: May 14 01:49:29 2025
 Quant Method : Z:\voasrv\HPCHEM1\MSVOA_N\methods\82N041525W.M
 Quant Title : SW846 8260
 QLast Update : Wed Apr 16 04:19:23 2025
 Response via : Initial Calibration

Compound	R.T.	QIon	Response	Conc	Units	Dev(Min)
Internal Standards						
1) Pentafluorobenzene	8.224	168	165900	50.000	ug/l	0.00
34) 1,4-Difluorobenzene	9.100	114	317142	50.000	ug/l	0.00
63) Chlorobenzene-d5	11.865	117	312516	50.000	ug/l	0.00
72) 1,4-Dichlorobenzene-d4	13.788	152	128863	50.000	ug/l	0.00
System Monitoring Compounds						
33) 1,2-Dichloroethane-d4	8.577	65	119475	49.663	ug/l	0.00
Spiked Amount	50.000	Range	74 - 125	Recovery	=	99.320%
35) Dibromofluoromethane	8.165	113	94017	63.875	ug/l	0.00
Spiked Amount	50.000	Range	75 - 124	Recovery	=	127.740%#
50) Toluene-d8	10.565	98	416200	52.908	ug/l	0.00
Spiked Amount	50.000	Range	86 - 113	Recovery	=	105.820%
62) 4-Bromofluorobenzene	12.847	95	143840	50.131	ug/l	0.00
Spiked Amount	50.000	Range	77 - 121	Recovery	=	100.260%
Target Compounds						
16) Acetone	4.430	43	25202	25.168	ug/l	90
18) Methyl Acetate	5.036	43	3651	1.264	ug/l #	84
20) Methylene Chloride	5.277	84	4119	1.852	ug/l #	89
43) Isopropyl Acetate	8.688	43	46708m	6.664	ug/l	

(#) = qualifier out of range (m) = manual integration (+) = signals summed

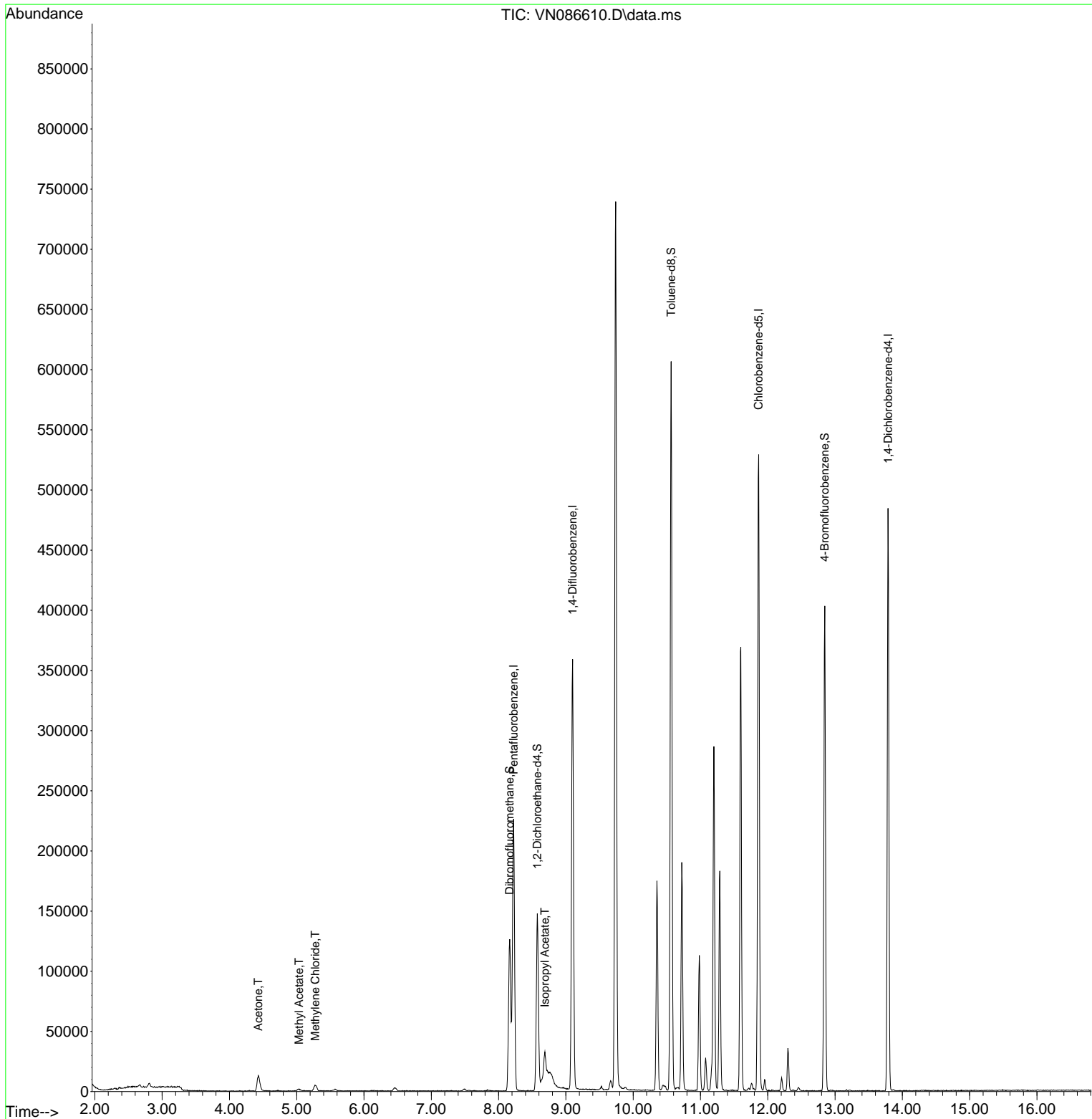
Data Path : Z:\voasrv\HPCHEM1\MSVOA_N\Data\VN051325\
 Data File : VN086610.D
 Acq On : 13 May 2025 18:37
 Operator : JC\MD
 Sample : PB167964ZHE#08
 Misc : 5.0mL/MSVOA_N/WATER
 ALS Vial : 22 Sample Multiplier: 1

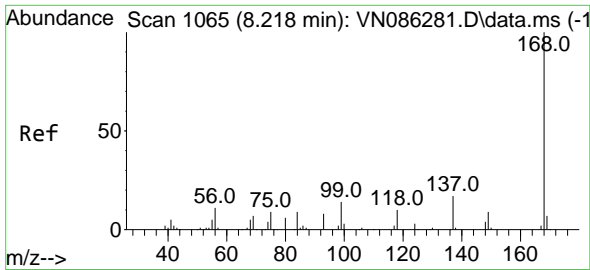
Instrument :
 MSVOA_N
ClientSampleId :
 PB167964ZHE#08

Manual Integrations
APPROVED

Reviewed By :John Carlone 05/14/2025
 Supervised By :Mahesh Dadoda 05/14/2025

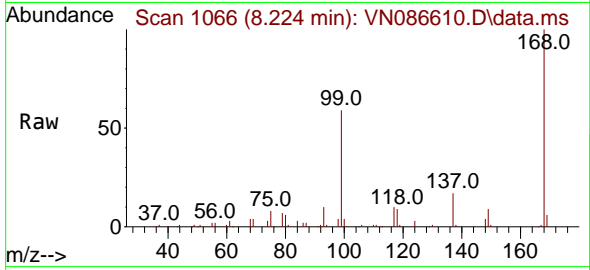
Quant Time: May 14 01:49:29 2025
 Quant Method : Z:\voasrv\HPCHEM1\MSVOA_N\methods\82N041525W.M
 Quant Title : SW846 8260
 QLast Update : Wed Apr 16 04:19:23 2025
 Response via : Initial Calibration





#1
 Pentafluorobenzene
 Concen: 50.000 ug/l
 RT: 8.224 min Scan# 1066
 Delta R.T. 0.006 min
 Lab File: VN086610.D
 Acq: 13 May 2025 18:37

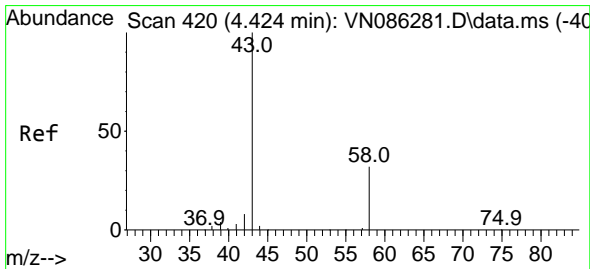
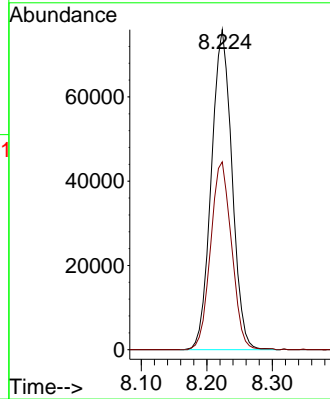
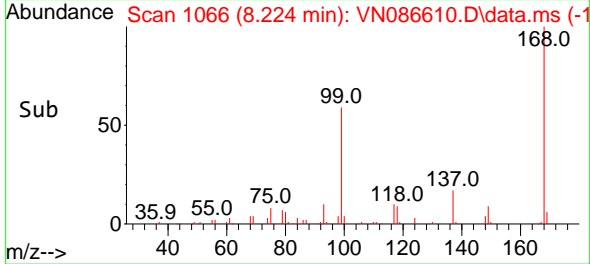
Instrument :
 MSVOA_N
 ClientSampleId :
 PB167964ZHE#08



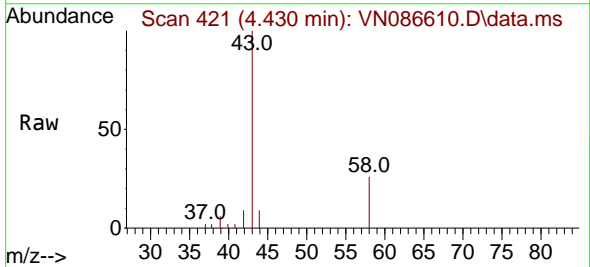
Tgt Ion:168 Resp: 165900
 Ion Ratio Lower Upper
 168 100
 99 58.7 52.5 78.7

Manual Integrations
 APPROVED

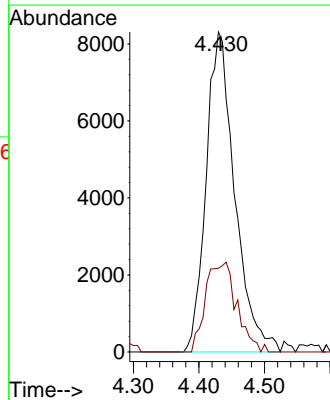
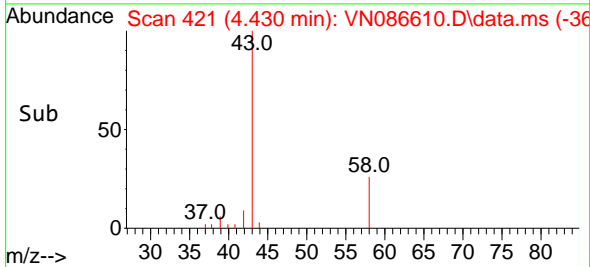
Reviewed By :John Carlone 05/14/2025
 Supervised By :Mahesh Dadoda 05/14/2025

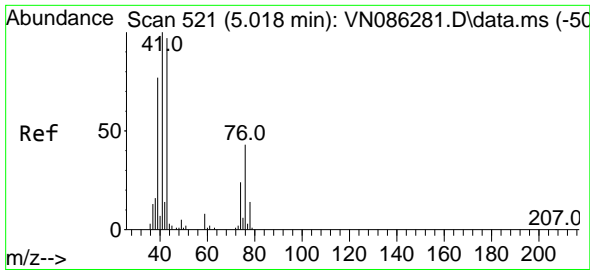


#16
 Acetone
 Concen: 25.168 ug/l
 RT: 4.430 min Scan# 421
 Delta R.T. 0.006 min
 Lab File: VN086610.D
 Acq: 13 May 2025 18:37



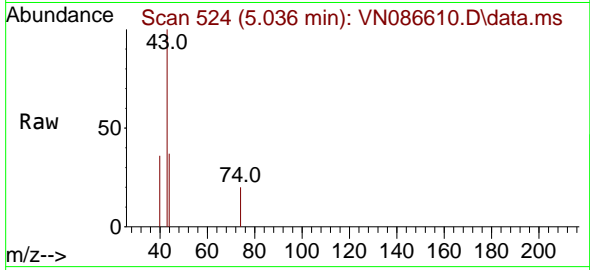
Tgt Ion: 43 Resp: 25202
 Ion Ratio Lower Upper
 43 100
 58 26.2 25.3 37.9





#18
 Methyl Acetate
 Concen: 1.264 ug/l
 RT: 5.036 min Scan# 51
 Delta R.T. 0.018 min
 Lab File: VN086610.D
 Acq: 13 May 2025 18:37

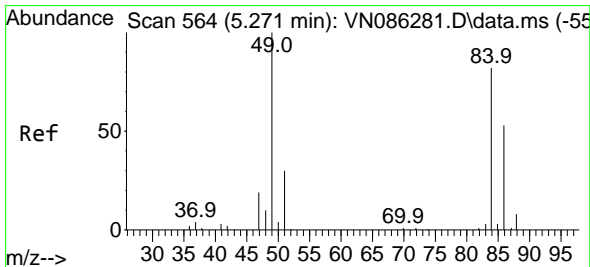
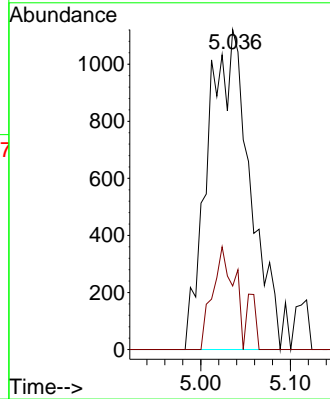
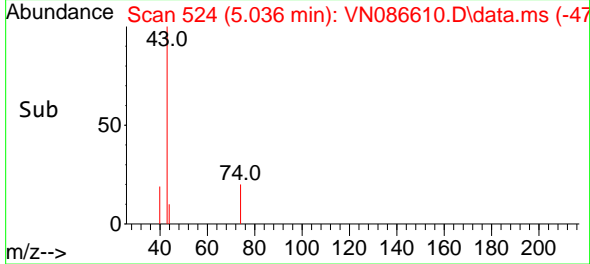
Instrument :
 MSVOA_N
 ClientSampleId :
 PB167964ZHE#08



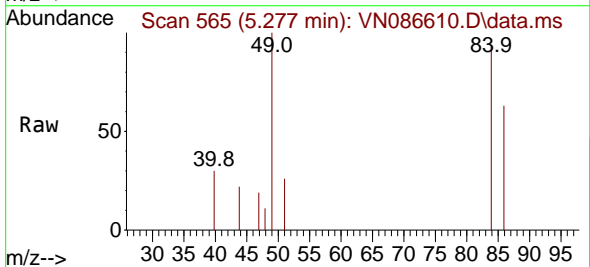
Tgt Ion: 43 Resp: 365
 Ion Ratio Lower Upper
 43 100
 74 16.5 19.8 29.6

Manual Integrations
 APPROVED

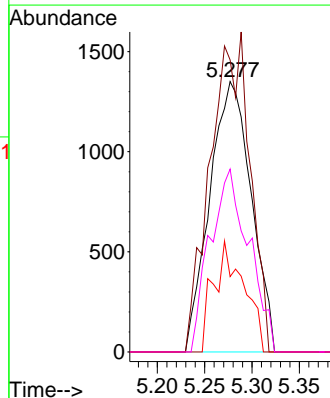
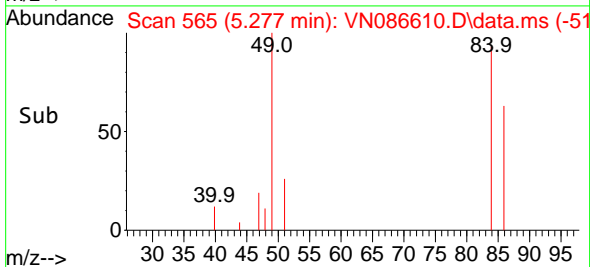
Reviewed By :John Carlone 05/14/2025
 Supervised By :Mahesh Dadoda 05/14/2025

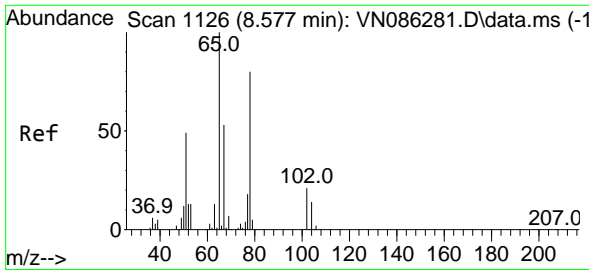


#20
 Methylene Chloride
 Concen: 1.852 ug/l
 RT: 5.277 min Scan# 565
 Delta R.T. 0.006 min
 Lab File: VN086610.D
 Acq: 13 May 2025 18:37



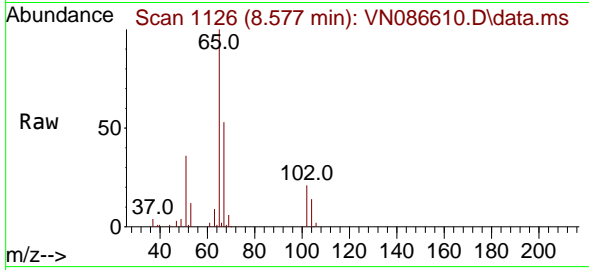
Tgt Ion: 84 Resp: 4119
 Ion Ratio Lower Upper
 84 100
 49 108.0 98.2 147.2
 51 27.9 29.8 44.6#
 86 67.6 52.0 78.0





#33
 1,2-Dichloroethane-d4
 Concen: 49.663 ug/l
 RT: 8.577 min Scan# 1126
 Delta R.T. -0.000 min
 Lab File: VN086610.D
 Acq: 13 May 2025 18:37

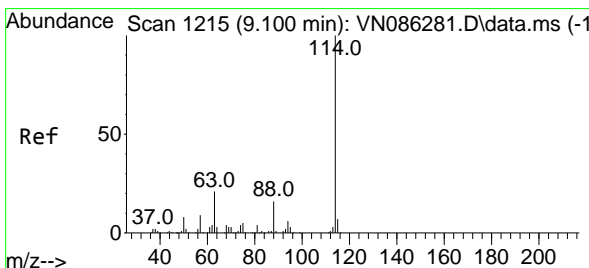
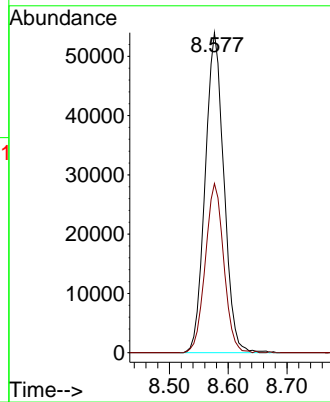
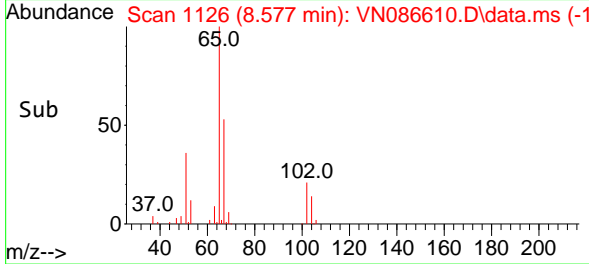
Instrument : MSVOA_N
 Client Sample Id : PB167964ZHE#08



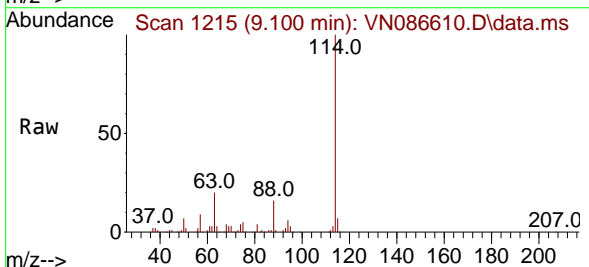
Tgt Ion: 65 Resp: 11947
 Ion Ratio Lower Upper
 65 100
 67 52.2 0.0 106.0

Manual Integrations
APPROVED

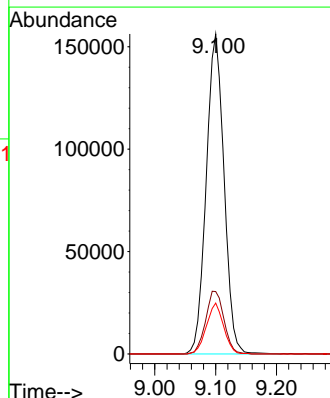
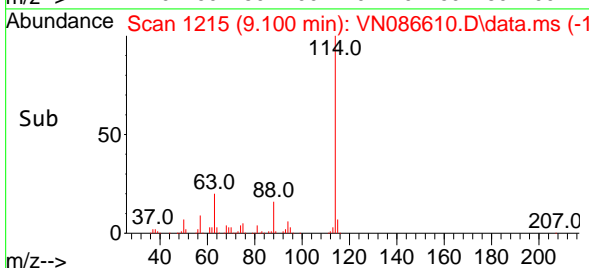
Reviewed By :John Carlone 05/14/2025
 Supervised By :Mahesh Dadoda 05/14/2025

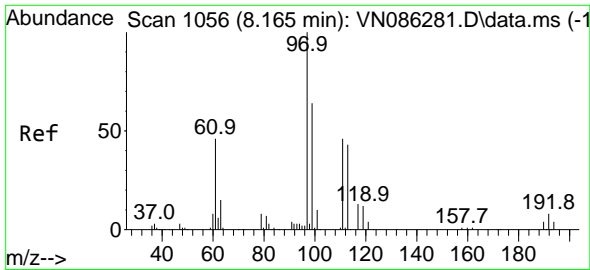


#34
 1,4-Difluorobenzene
 Concen: 50.000 ug/l
 RT: 9.100 min Scan# 1215
 Delta R.T. -0.000 min
 Lab File: VN086610.D
 Acq: 13 May 2025 18:37



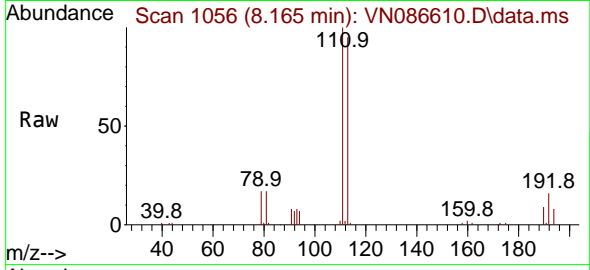
Tgt Ion:114 Resp: 317142
 Ion Ratio Lower Upper
 114 100
 63 19.5 0.0 42.6
 88 15.9 0.0 31.8





#35
 Dibromofluoromethane
 Concen: 63.875 ug/l
 RT: 8.165 min Scan# 1056
 Delta R.T. -0.000 min
 Lab File: VN086610.D
 Acq: 13 May 2025 18:37

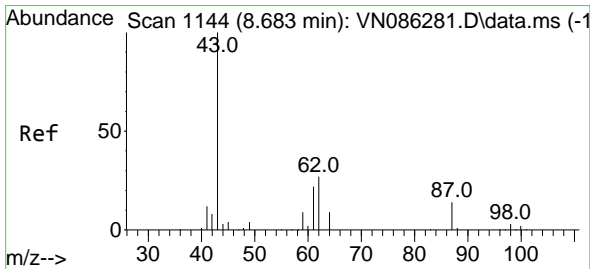
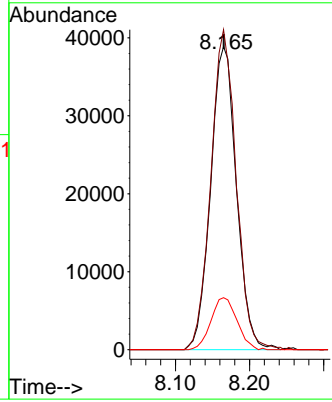
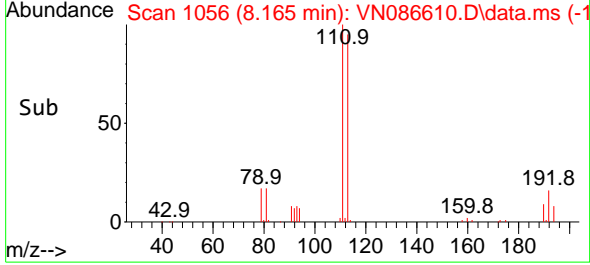
Instrument : MSVOA_N
 Client Sample Id : PB167964ZHE#08



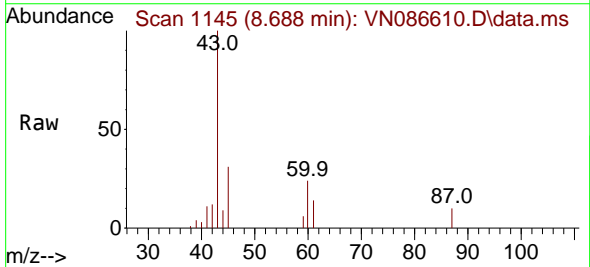
Tgt Ion: 113 Resp: 9401
 Ion Ratio Lower Upper
 113 100
 111 103.7 83.4 125.0
 192 17.3 13.7 20.5

Manual Integrations
APPROVED

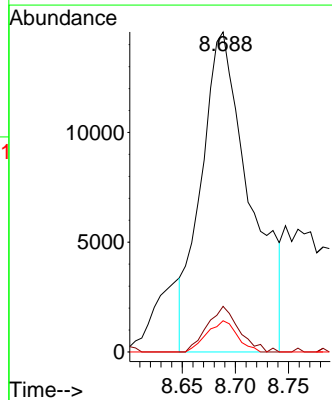
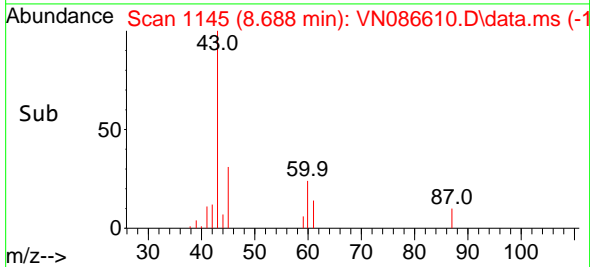
Reviewed By :John Carlone 05/14/2025
 Supervised By :Mahesh Dadoda 05/14/2025

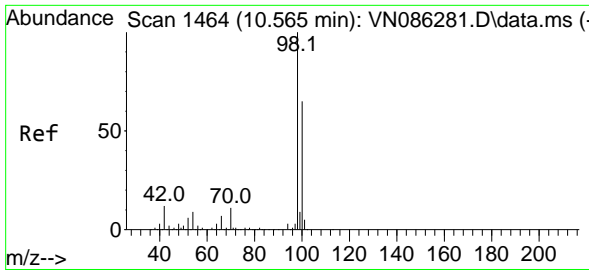


#43
 Isopropyl Acetate
 Concen: 6.664 ug/l m
 RT: 8.688 min Scan# 1145
 Delta R.T. 0.005 min
 Lab File: VN086610.D
 Acq: 13 May 2025 18:37



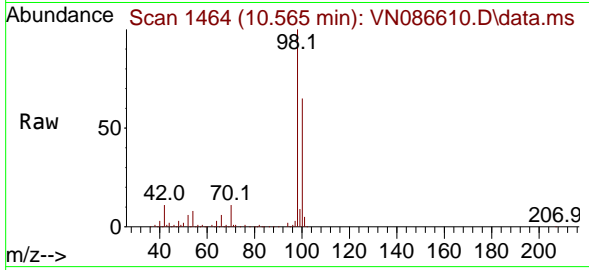
Tgt Ion: 43 Resp: 46708
 Ion Ratio Lower Upper
 43 100
 61 9.3 20.5 30.7#
 87 6.0 10.5 15.7#





#50
 Toluene-d8
 Concen: 52.908 ug/l
 RT: 10.565 min Scan# 1464
 Delta R.T. -0.000 min
 Lab File: VN086610.D
 Acq: 13 May 2025 18:37

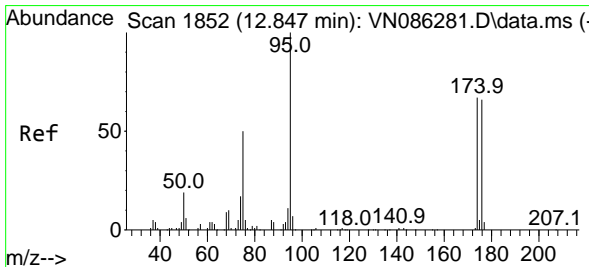
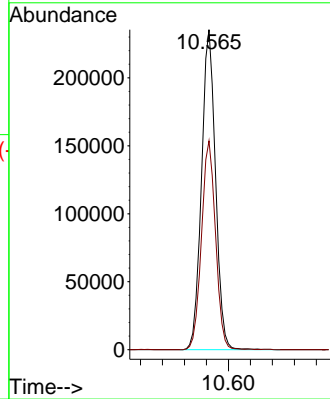
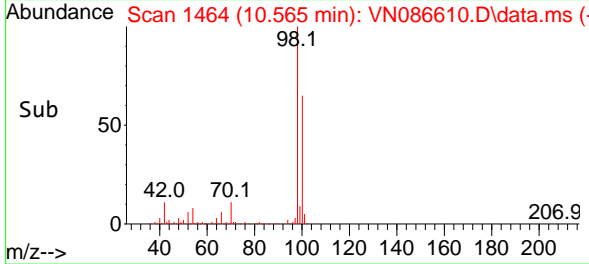
Instrument : MSVOA_N
 ClientSampleId : PB167964ZHE#08



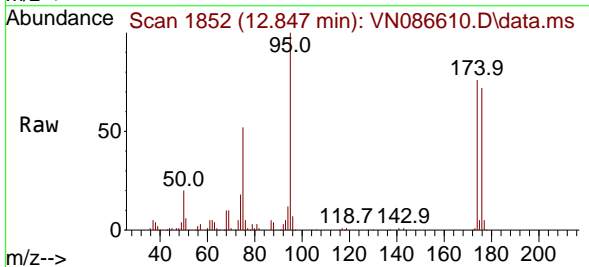
Tgt Ion: 98 Resp: 416200
 Ion Ratio Lower Upper
 98 100
 100 65.6 52.5 78.7

Manual Integrations
APPROVED

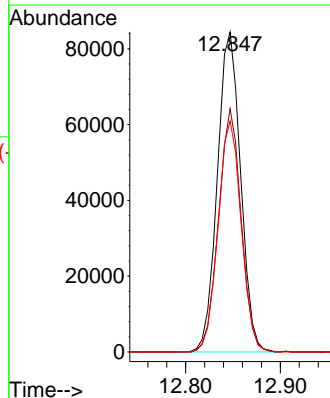
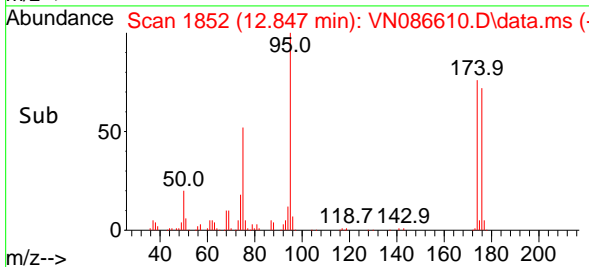
Reviewed By :John Carlone 05/14/2025
 Supervised By :Mahesh Dadoda 05/14/2025

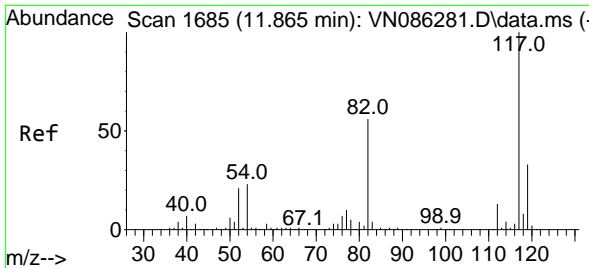


#62
 4-Bromofluorobenzene
 Concen: 50.131 ug/l
 RT: 12.847 min Scan# 1852
 Delta R.T. -0.000 min
 Lab File: VN086610.D
 Acq: 13 May 2025 18:37



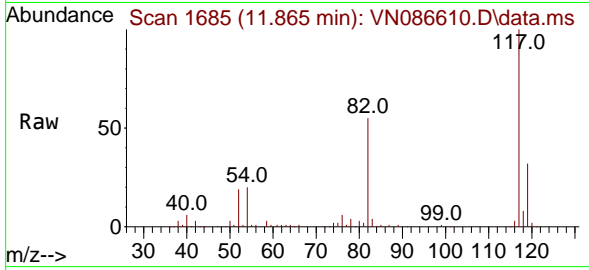
Tgt Ion: 95 Resp: 143840
 Ion Ratio Lower Upper
 95 100
 174 74.0 0.0 133.4
 176 71.8 0.0 129.2





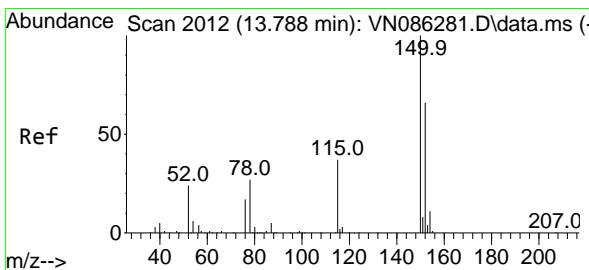
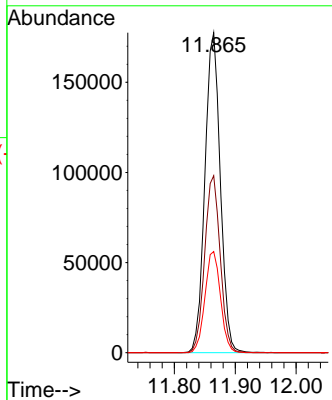
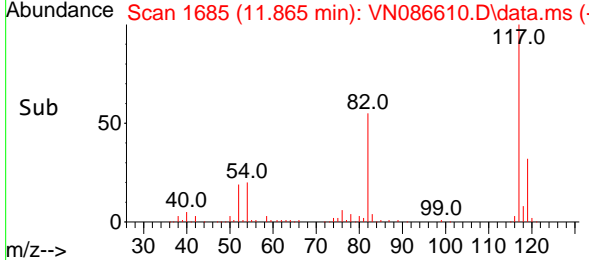
#63
 Chlorobenzene-d5
 Concen: 50.000 ug/l
 RT: 11.865 min Scan# 10
 Delta R.T. -0.000 min
 Lab File: VN086610.D
 Acq: 13 May 2025 18:37

Instrument : MSVOA_N
 ClientSampleId : PB167964ZHE#08

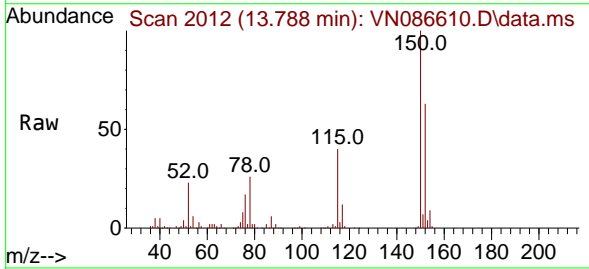


Tgt Ion:117 Resp: 312510
 Ion Ratio Lower Upper
 117 100
 82 55.3 44.7 67.1
 119 31.6 26.4 39.6

Manual Integrations
APPROVED
 Reviewed By :John Carlone 05/14/2025
 Supervised By :Mahesh Dadoda 05/14/2025



#72
 1,4-Dichlorobenzene-d4
 Concen: 50.000 ug/l
 RT: 13.788 min Scan# 2012
 Delta R.T. -0.000 min
 Lab File: VN086610.D
 Acq: 13 May 2025 18:37



Tgt Ion:152 Resp: 128863
 Ion Ratio Lower Upper
 152 100
 115 61.5 31.9 95.9
 150 160.5 0.0 352.0

