

Data Path : Z:\voasrv\HPCHEM1\MSVOA\_N\Data\VN051425\  
 Data File : VN086618.D  
 Acq On : 14 May 2025 11:34  
 Operator : JC\MD  
 Sample : VN0514WBL01  
 Misc : 5.0mL/MSVOA\_N/WATER  
 ALS Vial : 4 Sample Multiplier: 1

Instrument :  
 MSVOA\_N  
 ClientSampleId :  
 VN0514WBL01

Quant Time: May 15 02:59:56 2025  
 Quant Method : Z:\voasrv\HPCHEM1\MSVOA\_N\methods\82N041525W.M  
 Quant Title : SW846 8260  
 QLast Update : Wed Apr 16 04:19:23 2025  
 Response via : Initial Calibration

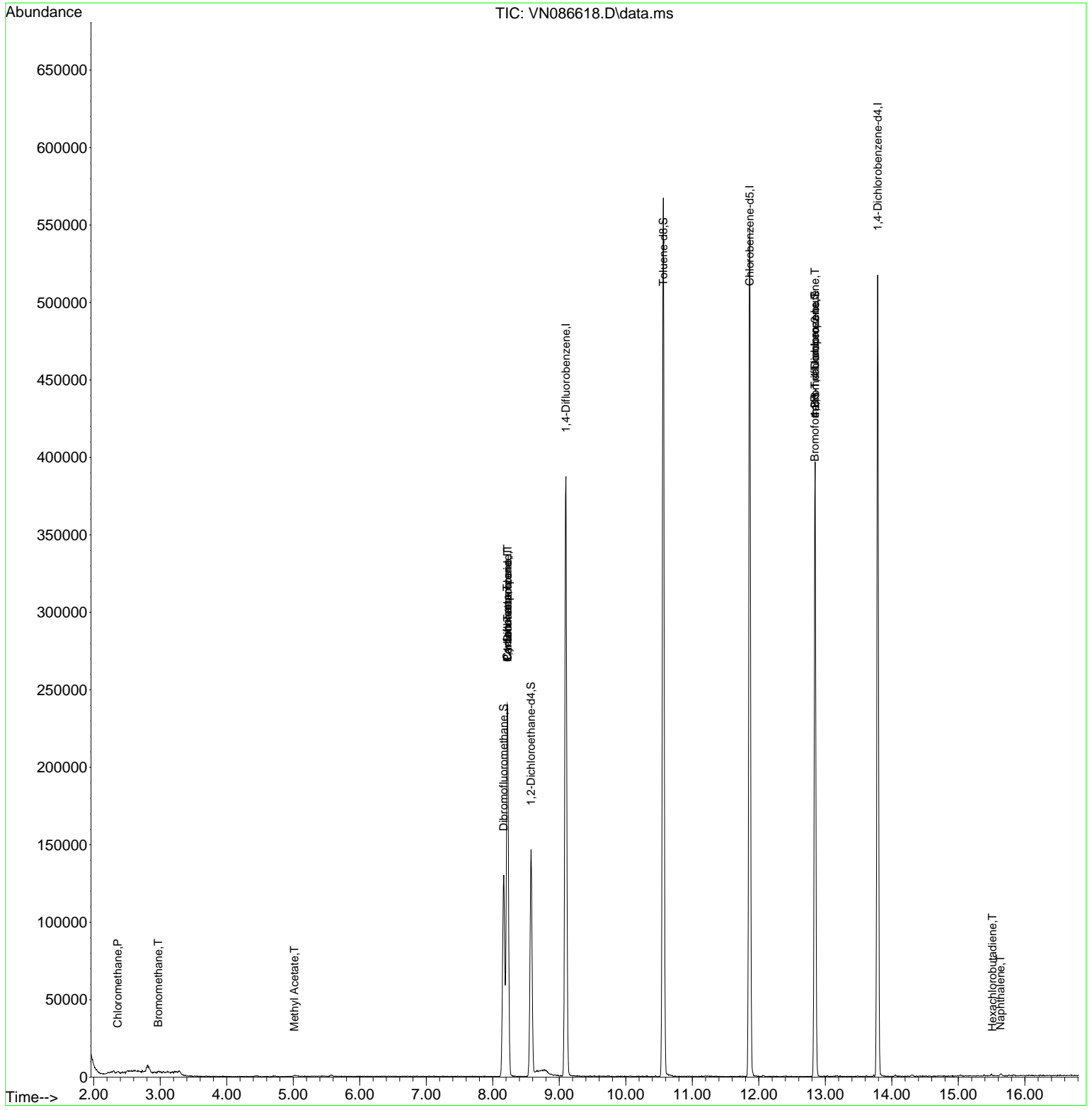
Compound	R.T.	QIon	Response	Conc	Units	Dev(Min)
-----						
Internal Standards						
1) Pentafluorobenzene	8.224	168	180085	50.000	ug/l	0.00
34) 1,4-Difluorobenzene	9.100	114	342033	50.000	ug/l	0.00
63) Chlorobenzene-d5	11.865	117	328169	50.000	ug/l	0.00
72) 1,4-Dichlorobenzene-d4	13.788	152	139912	50.000	ug/l	0.00
System Monitoring Compounds						
33) 1,2-Dichloroethane-d4	8.577	65	118065	45.212	ug/l	0.00
Spiked Amount	50.000	Range 74 - 125	Recovery	=	90.420%	
35) Dibromofluoromethane	8.165	113	96907	61.047	ug/l	0.00
Spiked Amount	50.000	Range 75 - 124	Recovery	=	122.100%	
50) Toluene-d8	10.565	98	401543	47.330	ug/l	0.00
Spiked Amount	50.000	Range 86 - 113	Recovery	=	94.660%	
62) 4-Bromofluorobenzene	12.847	95	141042	45.579	ug/l	0.00
Spiked Amount	50.000	Range 77 - 121	Recovery	=	91.160%	
Target Compounds						
						Qvalue
3) Chloromethane	2.359	50	965	0.311	ug/l	98
5) Bromomethane	2.971	94	571	0.429	ug/l #	3
16) Acetone	4.436	43	1147	Below Cal	#	43
18) Methyl Acetate	5.018	43	1069	0.341	ug/l #	63
31) Cyclohexane	8.218	56	3815	0.901	ug/l #	1
36) 1,1-Dichloropropene	8.224	75	15002	4.732	ug/l #	49
38) Carbon Tetrachloride	8.224	117	18179	6.021	ug/l #	16
43) Isopropyl Acetate	8.677	43	3550	Below Cal	#	55
71) Bromoform	12.841	173	607	0.334	ug/l #	1
76) 1,2,3-Trichloropropane	12.847	75	71345	21.608	ug/l #	1
81) trans-1,4-Dichloro-2-b...	12.847	75	71345	51.896	ug/l #	10
94) Hexachlorobutadiene	15.511	225	428	0.512	ug/l #	18
95) Naphthalene	15.635	128	2217	0.283	ug/l #	75

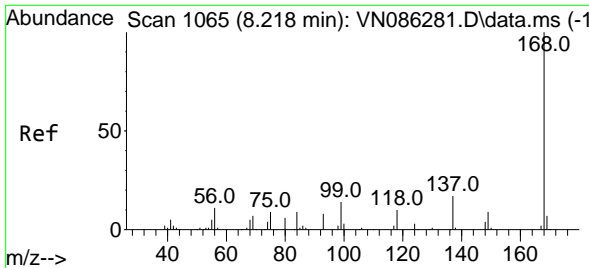
(#) = qualifier out of range (m) = manual integration (+) = signals summed

Data Path : Z:\voasrv\HPCHEM1\MSVOA\_N\Data\VN051425\  
 Data File : VN086618.D  
 Acq On : 14 May 2025 11:34  
 Operator : JC\MD  
 Sample : VN0514WBL01  
 Misc : 5.0mL/MSVOA\_N/WATER  
 ALS Vial : 4 Sample Multiplier: 1

**Instrument :**  
 MSVOA\_N  
**ClientSampleId :**  
 VN0514WBL01

Quant Time: May 15 02:59:56 2025  
 Quant Method : Z:\voasrv\HPCHEM1\MSVOA\_N\methods\82N041525W.M  
 Quant Title : SW846 8260  
 QLast Update : Wed Apr 16 04:19:23 2025  
 Response via : Initial Calibration

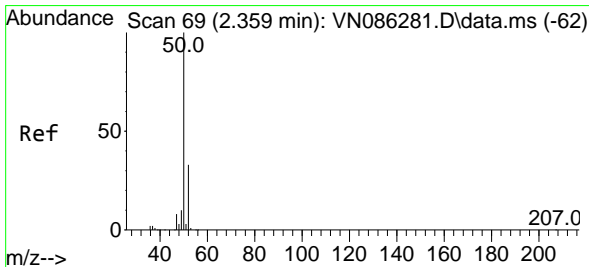
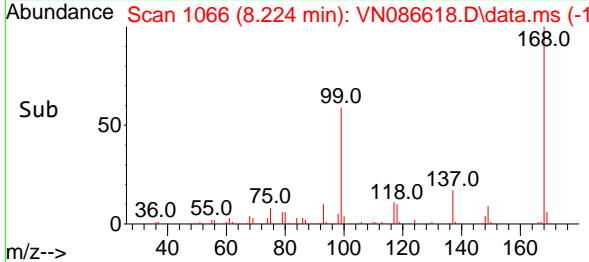
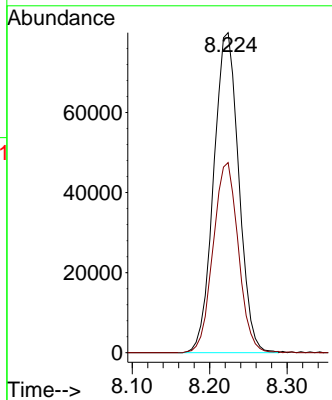
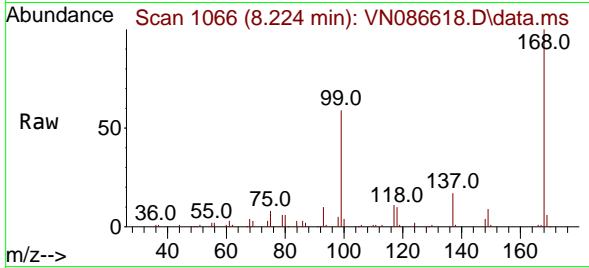




#1  
 Pentafluorobenzene  
 Concen: 50.000 ug/l  
 RT: 8.224 min Scan# 10  
 Delta R.T. 0.006 min  
 Lab File: VN086618.D  
 Acq: 14 May 2025 11:34

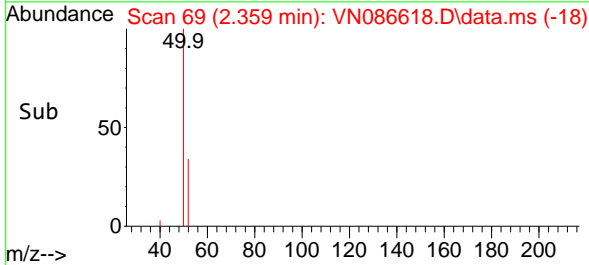
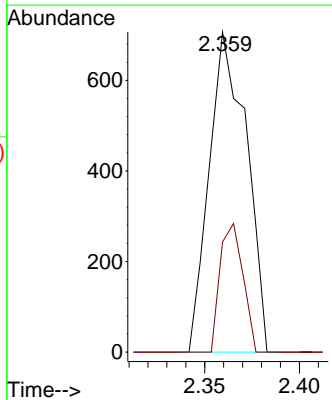
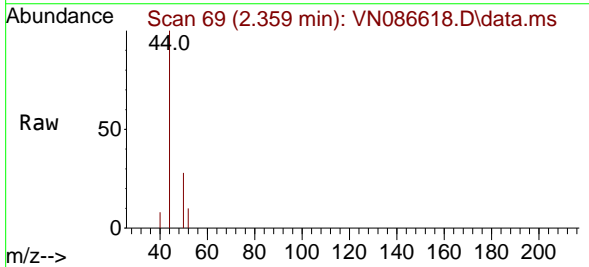
Instrument : MSVOA\_N  
 ClientSampleId : VN0514WBL01

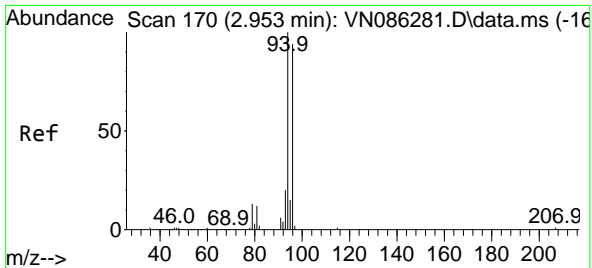
Tgt Ion:168 Resp: 180085  
 Ion Ratio Lower Upper  
 168 100  
 99 59.4 52.5 78.7



#3  
 Chloromethane  
 Concen: 0.311 ug/l  
 RT: 2.359 min Scan# 69  
 Delta R.T. -0.000 min  
 Lab File: VN086618.D  
 Acq: 14 May 2025 11:34

Tgt Ion: 50 Resp: 965  
 Ion Ratio Lower Upper  
 50 100  
 52 34.4 26.5 39.7

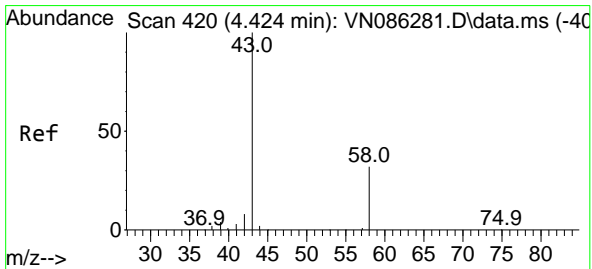
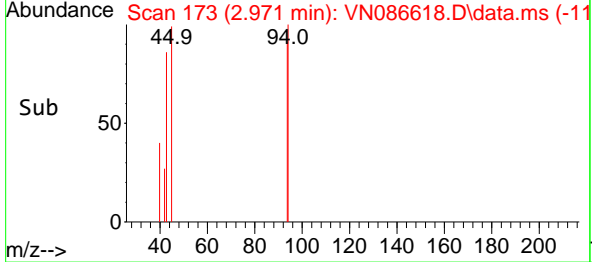
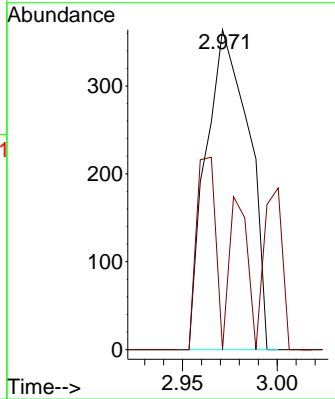
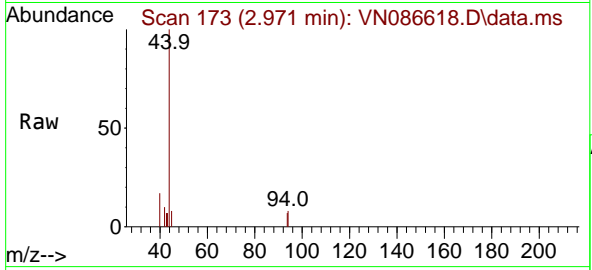




#5  
 Bromomethane  
 Concen: 0.429 ug/l  
 RT: 2.971 min Scan# 11  
 Delta R.T. 0.018 min  
 Lab File: VN086618.D  
 Acq: 14 May 2025 11:34

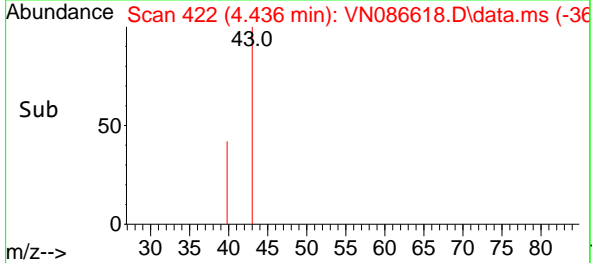
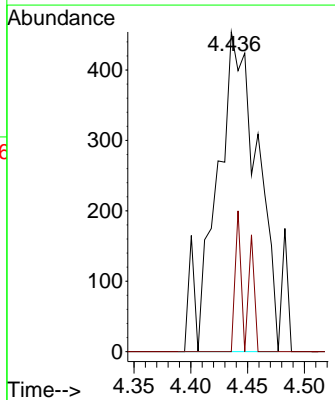
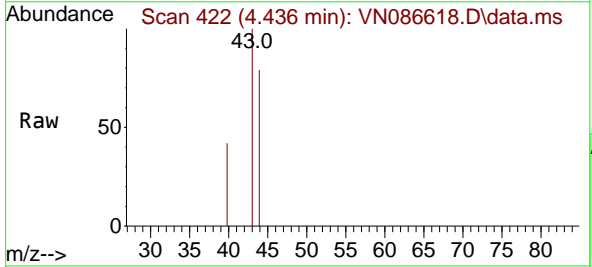
Instrument : MSVOA\_N  
 ClientSampleId : VN0514WBL01

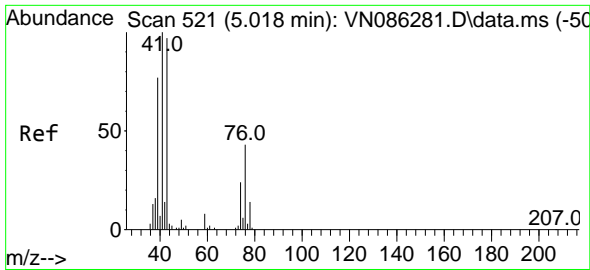
Tgt Ion: 94 Resp: 571  
 Ion Ratio Lower Upper  
 94 100  
 96 0.0 75.2 112.8#



#16  
 Acetone  
 Concen: Below Cal  
 RT: 4.436 min Scan# 422  
 Delta R.T. 0.012 min  
 Lab File: VN086618.D  
 Acq: 14 May 2025 11:34

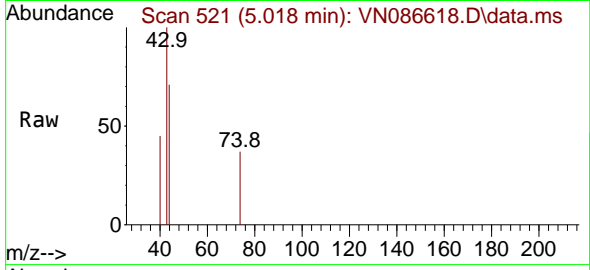
Tgt Ion: 43 Resp: 1147  
 Ion Ratio Lower Upper  
 43 100  
 58 0.0 25.3 37.9#



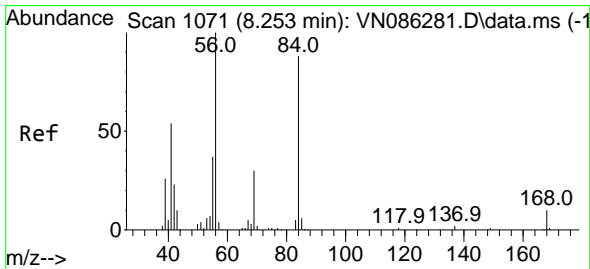
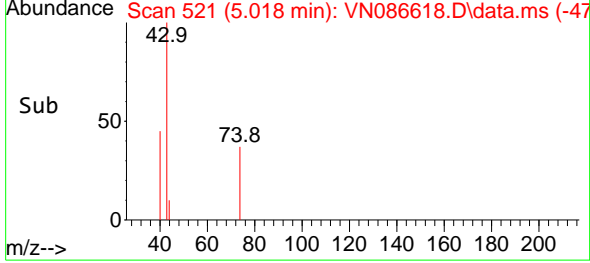
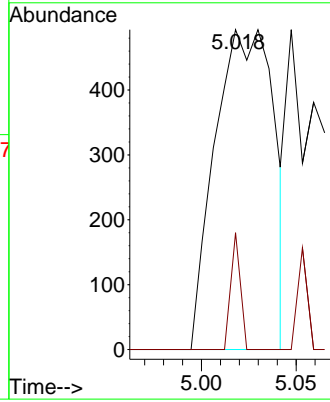


#18  
 Methyl Acetate  
 Concen: 0.341 ug/l  
 RT: 5.018 min Scan# 51  
 Delta R.T. -0.000 min  
 Lab File: VN086618.D  
 Acq: 14 May 2025 11:34

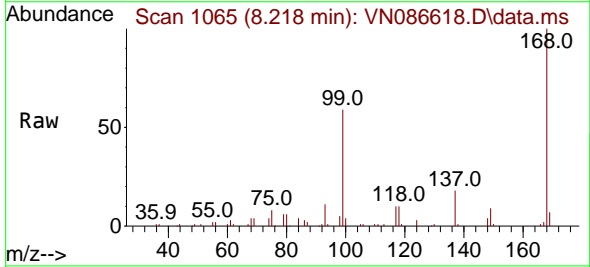
Instrument :  
 MSVOA\_N  
 ClientSampleId :  
 VN0514WBL01



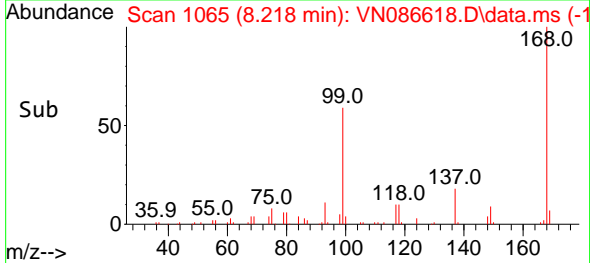
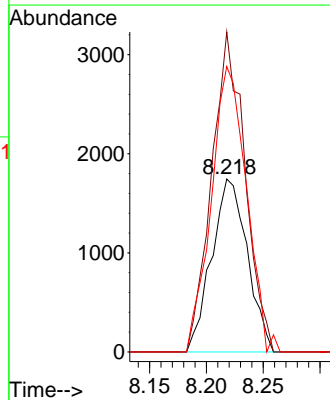
Tgt Ion: 43 Resp: 1069  
 Ion Ratio Lower Upper  
 43 100  
 74 6.0 19.8 29.6#

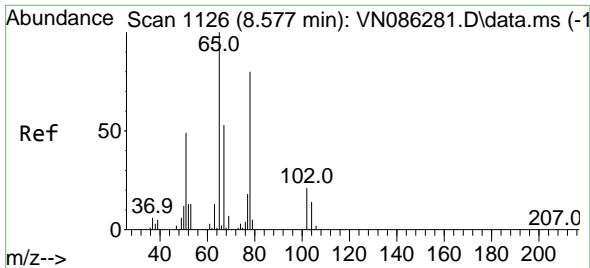


#31  
 Cyclohexane  
 Concen: 0.901 ug/l  
 RT: 8.218 min Scan# 1065  
 Delta R.T. -0.035 min  
 Lab File: VN086618.D  
 Acq: 14 May 2025 11:34



Tgt Ion: 56 Resp: 3815  
 Ion Ratio Lower Upper  
 56 100  
 69 185.0 24.2 36.2#  
 84 165.1 70.3 105.5#

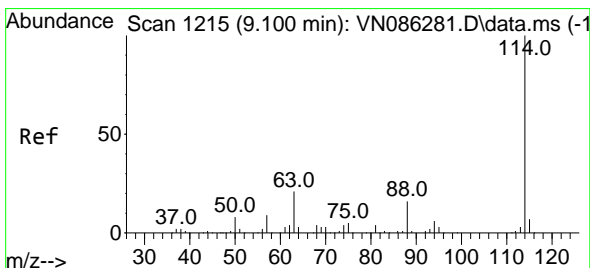
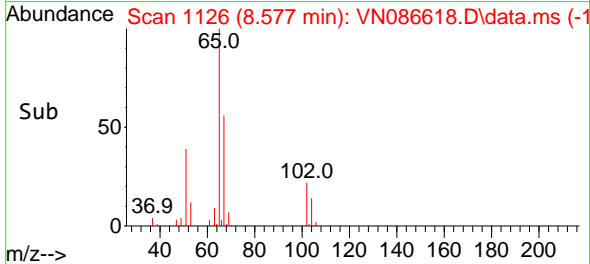
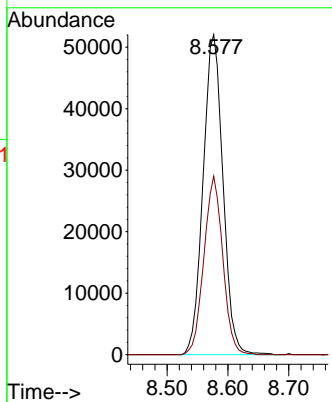
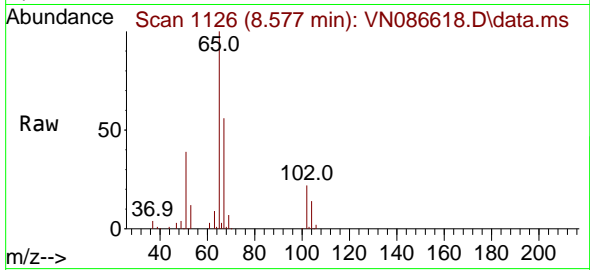




#33  
 1,2-Dichloroethane-d4  
 Concen: 45.212 ug/l  
 RT: 8.577 min Scan# 1126  
 Delta R.T. -0.000 min  
 Lab File: VN086618.D  
 Acq: 14 May 2025 11:34

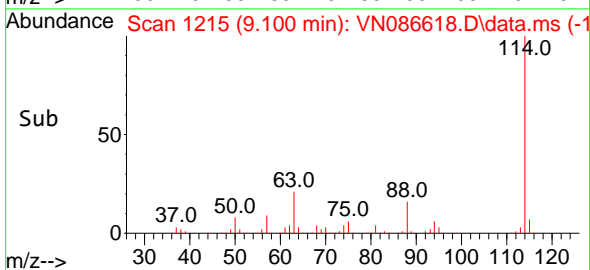
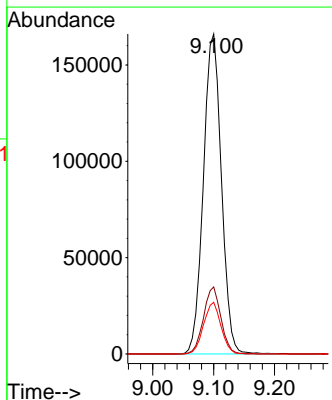
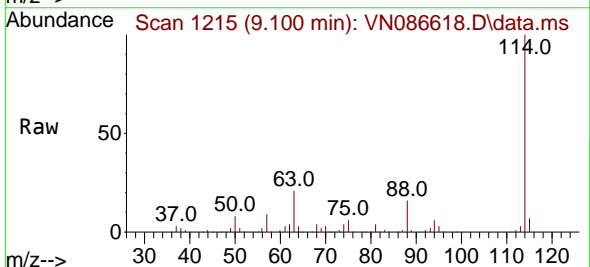
Instrument : MSVOA\_N  
 ClientSampleId : VN0514WBL01

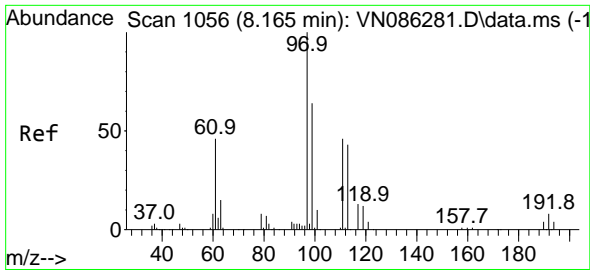
Tgt Ion: 65 Resp: 118065  
 Ion Ratio Lower Upper  
 65 100  
 67 53.0 0.0 106.0



#34  
 1,4-Difluorobenzene  
 Concen: 50.000 ug/l  
 RT: 9.100 min Scan# 1215  
 Delta R.T. -0.000 min  
 Lab File: VN086618.D  
 Acq: 14 May 2025 11:34

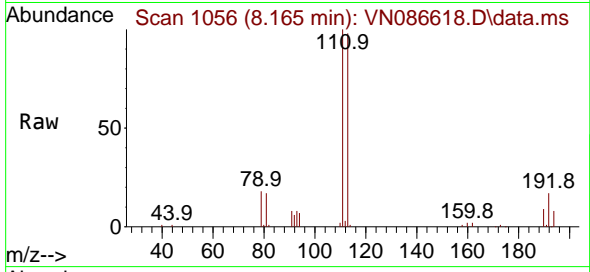
Tgt Ion: 114 Resp: 342033  
 Ion Ratio Lower Upper  
 114 100  
 63 20.9 0.0 42.6  
 88 16.2 0.0 31.8



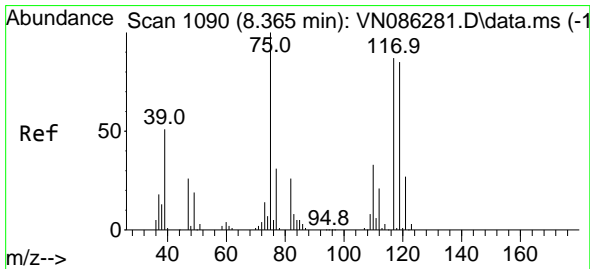
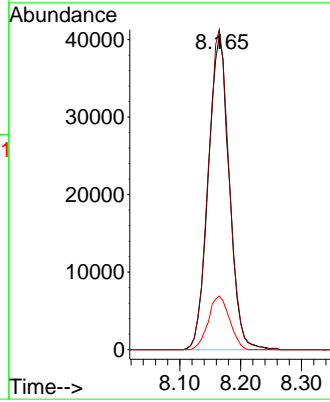
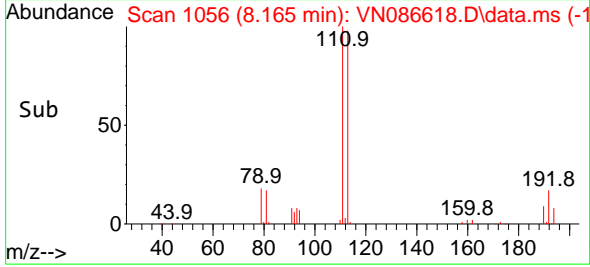


#35  
 Dibromofluoromethane  
 Concen: 61.047 ug/l  
 RT: 8.165 min Scan# 1056  
 Delta R.T. -0.000 min  
 Lab File: VN086618.D  
 Acq: 14 May 2025 11:34

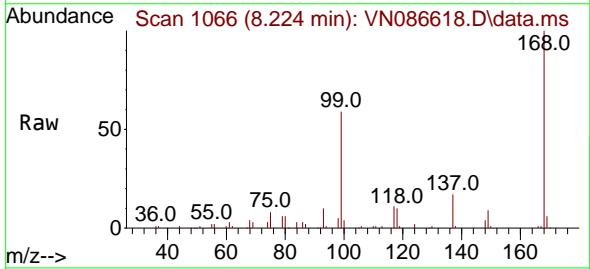
Instrument : MSVOA\_N  
 ClientSampleId : VN0514WBL01



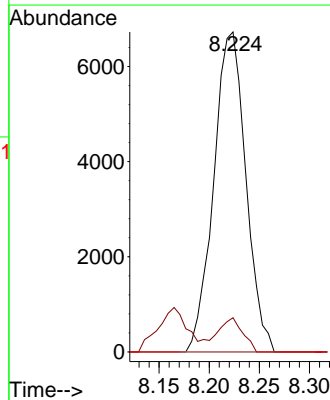
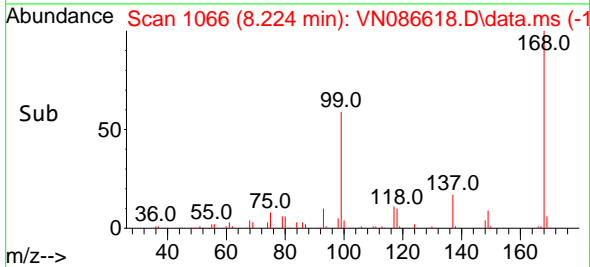
Tgt Ion:113 Resp: 96907  
 Ion Ratio Lower Upper  
 113 100  
 111 101.5 83.4 125.0  
 192 17.3 13.7 20.5

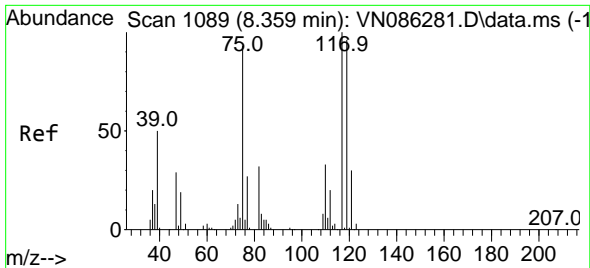


#36  
 1,1-Dichloropropene  
 Concen: 4.732 ug/l  
 RT: 8.224 min Scan# 1066  
 Delta R.T. -0.141 min  
 Lab File: VN086618.D  
 Acq: 14 May 2025 11:34



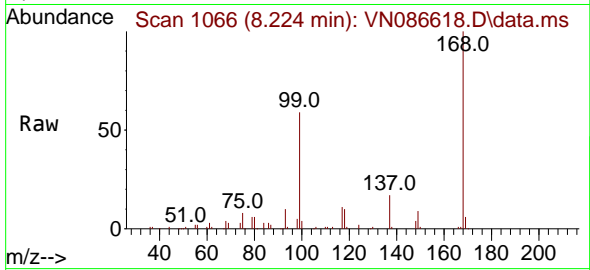
Tgt Ion: 75 Resp: 15002  
 Ion Ratio Lower Upper  
 75 100  
 110 7.8 16.8 50.4#  
 77 0.0 24.9 37.3#



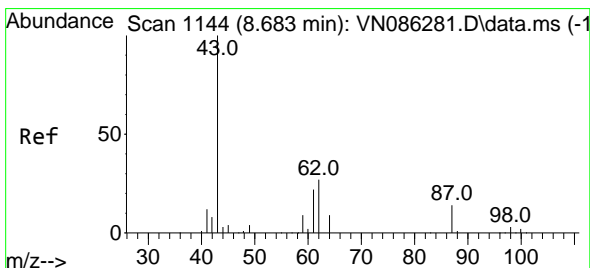
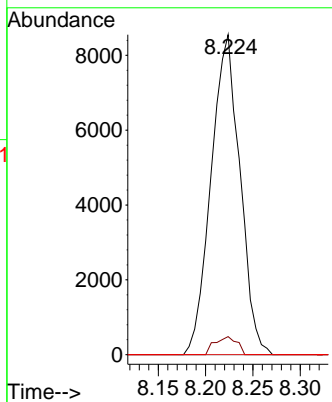
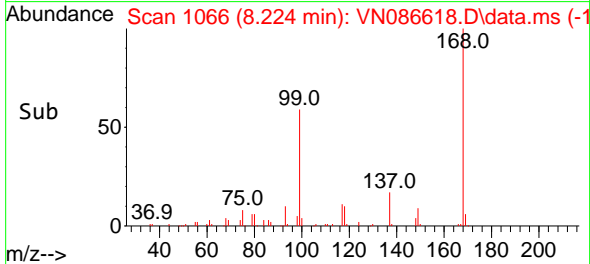


#38  
 Carbon Tetrachloride  
 Concen: 6.021 ug/l  
 RT: 8.224 min Scan# 1066  
 Delta R.T. -0.135 min  
 Lab File: VN086618.D  
 Acq: 14 May 2025 11:34

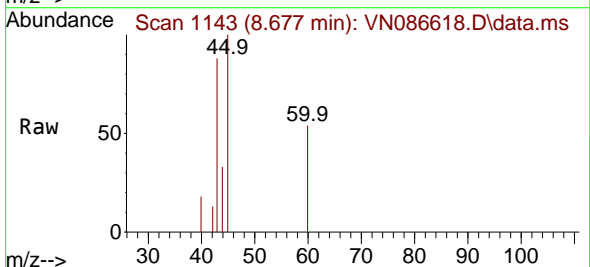
Instrument : MSVOA\_N  
 ClientSampleId : VN0514WBL01



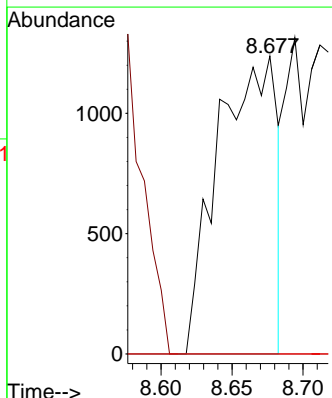
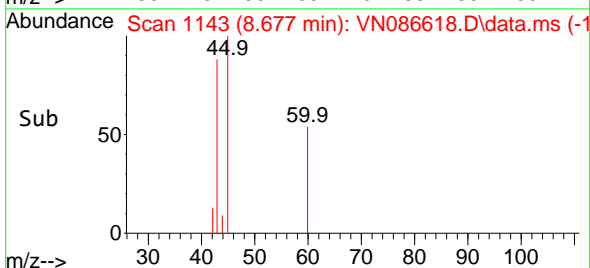
Tgt Ion: 117 Resp: 18179  
 Ion Ratio Lower Upper  
 117 100  
 119 5.7 76.8 115.2#  
 121 0.0 23.8 35.8#



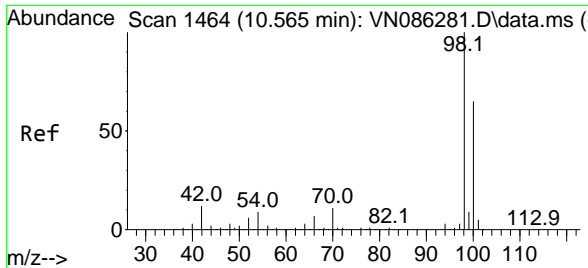
#43  
 Isopropyl Acetate  
 Concen: Below Cal  
 RT: 8.677 min Scan# 1143  
 Delta R.T. -0.006 min  
 Lab File: VN086618.D  
 Acq: 14 May 2025 11:34



Tgt Ion: 43 Resp: 3550  
 Ion Ratio Lower Upper  
 43 100  
 61 0.0 20.5 30.7#  
 87 0.0 10.5 15.7#



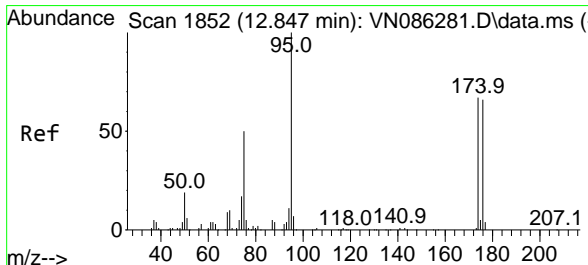
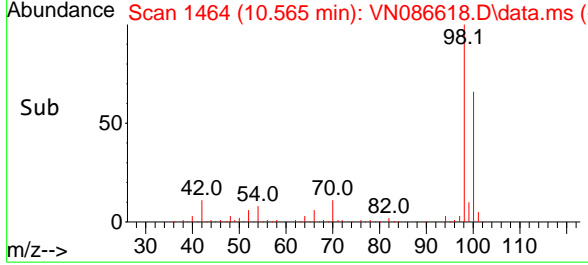
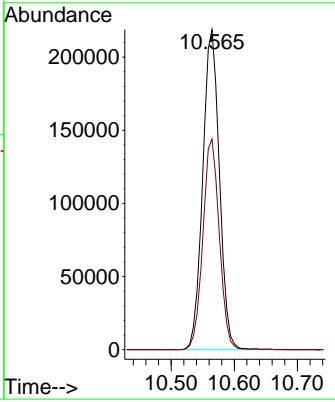
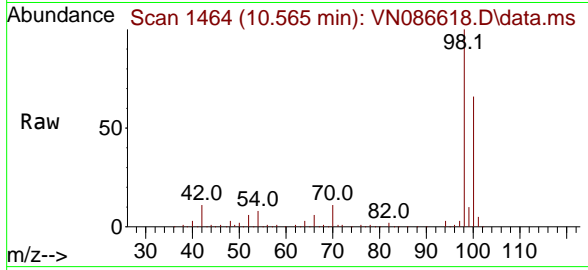




#50  
 Toluene-d8  
 Concen: 47.330 ug/l  
 RT: 10.565 min Scan# 1464  
 Delta R.T. -0.000 min  
 Lab File: VN086618.D  
 Acq: 14 May 2025 11:34

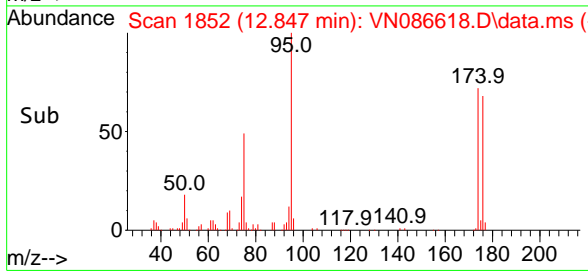
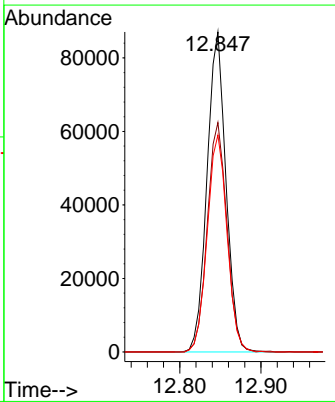
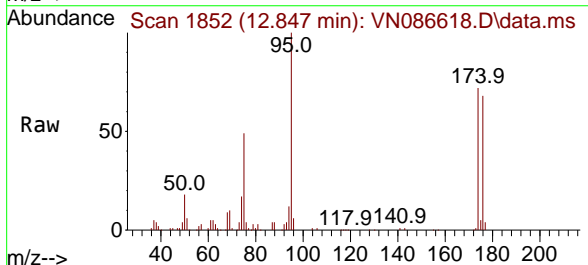
Instrument : MSVOA\_N  
 ClientSampleId : VN0514WBL01

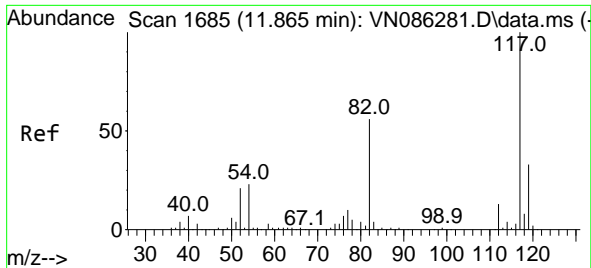
Tgt Ion: 98 Resp: 401543  
 Ion Ratio Lower Upper  
 98 100  
 100 64.8 52.5 78.7



#62  
 4-Bromofluorobenzene  
 Concen: 45.579 ug/l  
 RT: 12.847 min Scan# 1852  
 Delta R.T. -0.000 min  
 Lab File: VN086618.D  
 Acq: 14 May 2025 11:34

Tgt Ion: 95 Resp: 141042  
 Ion Ratio Lower Upper  
 95 100  
 174 74.4 0.0 133.4  
 176 70.8 0.0 129.2

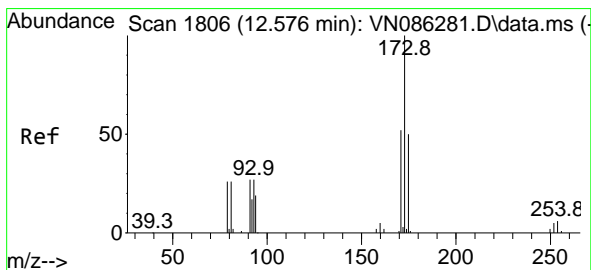
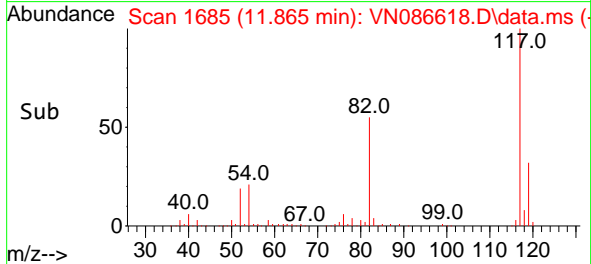
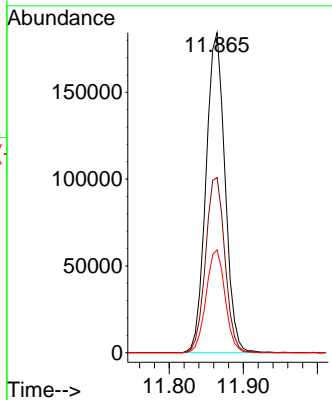
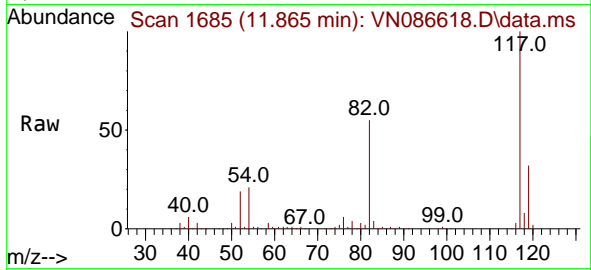




#63  
 Chlorobenzene-d5  
 Concen: 50.000 ug/l  
 RT: 11.865 min Scan# 117  
 Delta R.T. -0.000 min  
 Lab File: VN086618.D  
 Acq: 14 May 2025 11:34

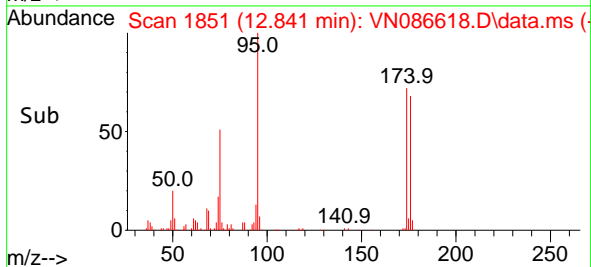
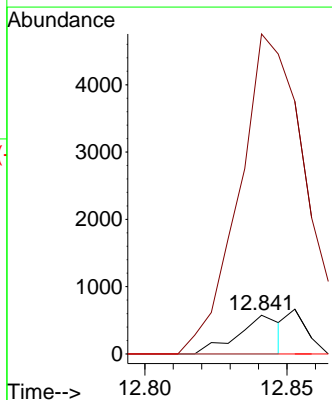
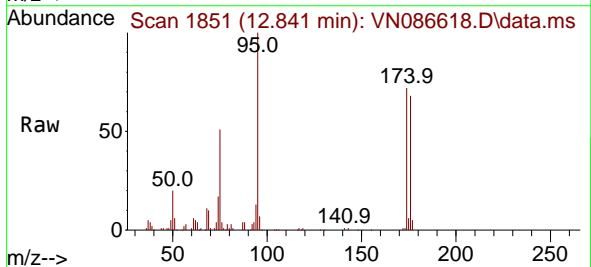
Instrument :  
 MSVOA\_N  
 ClientSampleId :  
 VN0514WBL01

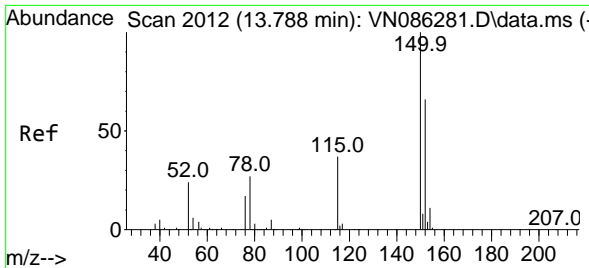
Tgt Ion	Resp	Lower	Upper
117	328169	100	100
82	54.8	44.7	67.1
119	32.2	26.4	39.6



#71  
 Bromoform  
 Concen: 0.334 ug/l  
 RT: 12.841 min Scan# 1851  
 Delta R.T. 0.265 min  
 Lab File: VN086618.D  
 Acq: 14 May 2025 11:34

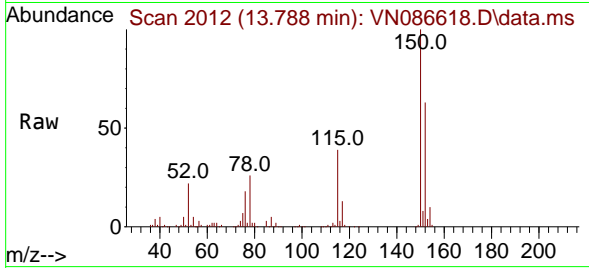
Tgt Ion	Resp	Lower	Upper
173	607	100	100
175	1065.2	24.6	73.6#
254	0.0	0.0	0.0



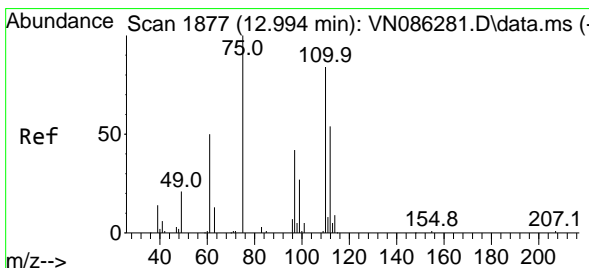
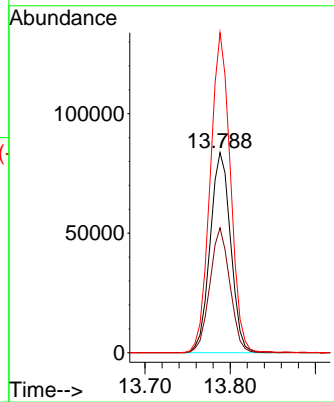
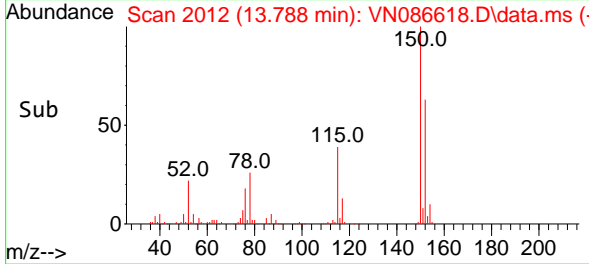


#72  
 1,4-Dichlorobenzene-d4  
 Concen: 50.000 ug/l  
 RT: 13.788 min Scan# 2012  
 Delta R.T. -0.000 min  
 Lab File: VN086618.D  
 Acq: 14 May 2025 11:34

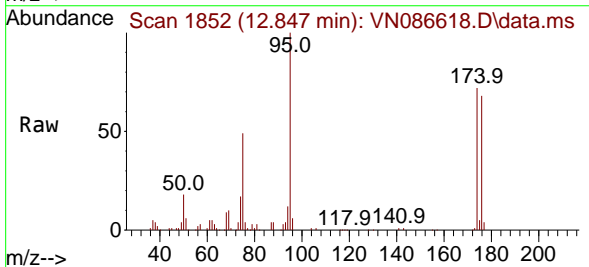
Instrument :  
 MSVOA\_N  
 ClientSampleId :  
 VN0514WBL01



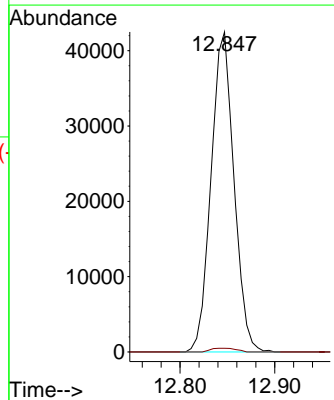
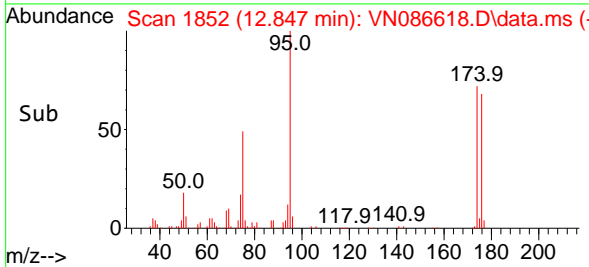
Tgt Ion:152 Resp: 139912  
 Ion Ratio Lower Upper  
 152 100  
 115 61.0 31.9 95.9  
 150 157.7 0.0 352.0

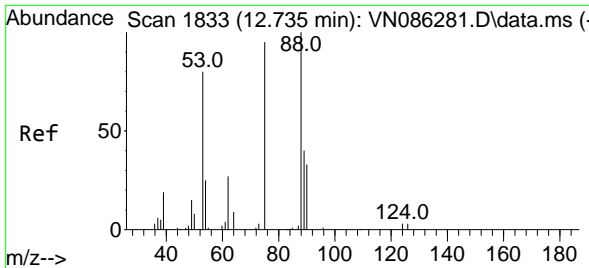


#76  
 1,2,3-Trichloropropane  
 Concen: 21.608 ug/l  
 RT: 12.847 min Scan# 1852  
 Delta R.T. -0.147 min  
 Lab File: VN086618.D  
 Acq: 14 May 2025 11:34



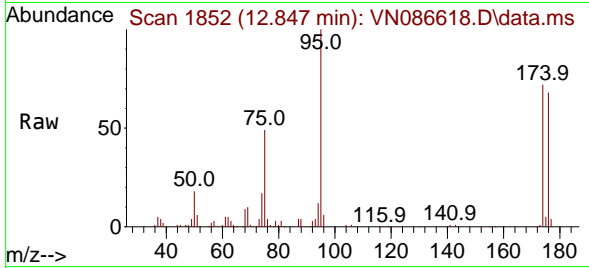
Tgt Ion: 75 Resp: 71345  
 Ion Ratio Lower Upper  
 75 100  
 77 1.3 98.8 296.4#



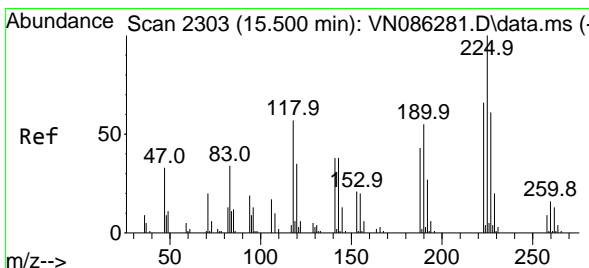
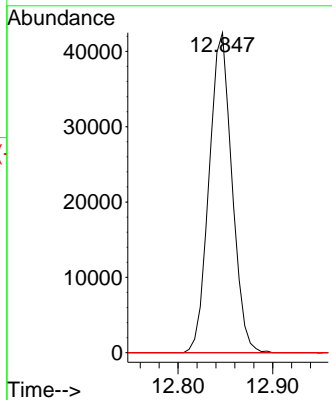
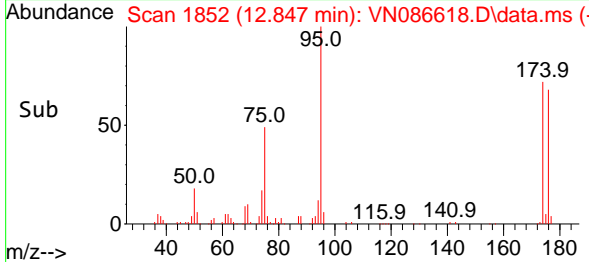


#81  
 trans-1,4-Dichloro-2-butene  
 Concen: 51.896 ug/l  
 RT: 12.847 min Scan# 11  
 Delta R.T. 0.112 min  
 Lab File: VN086618.D  
 Acq: 14 May 2025 11:34

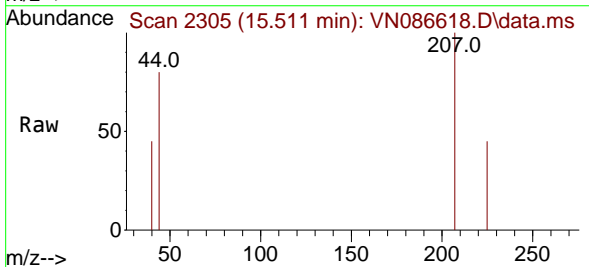
Instrument :  
 MSVOA\_N  
 ClientSampleId :  
 VN0514WBL01



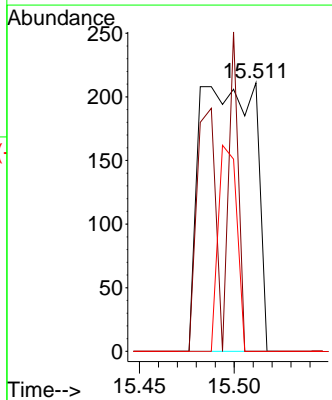
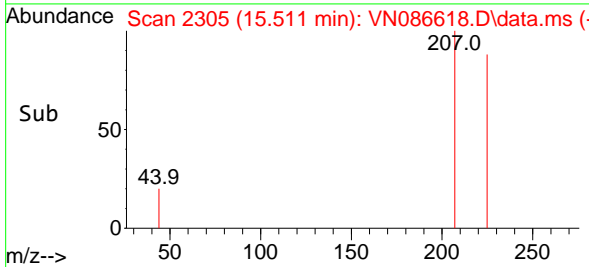
Tgt Ion: 75 Resp: 71345  
 Ion Ratio Lower Upper  
 75 100  
 53 0.0 79.2 118.8#  
 89 0.0 35.7 53.5#

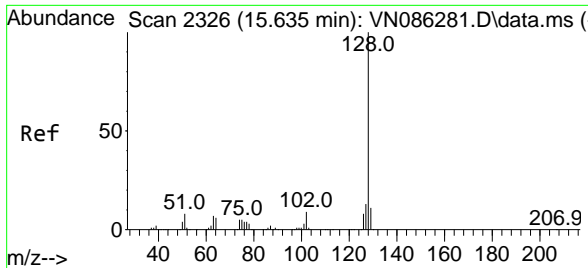


#94  
 Hexachlorobutadiene  
 Concen: 0.512 ug/l  
 RT: 15.511 min Scan# 2305  
 Delta R.T. 0.012 min  
 Lab File: VN086618.D  
 Acq: 14 May 2025 11:34



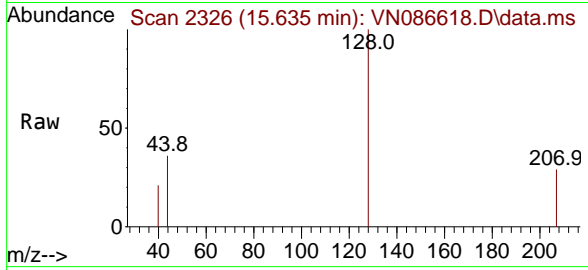
Tgt Ion: 225 Resp: 428  
 Ion Ratio Lower Upper  
 225 100  
 223 0.0 32.8 98.3#  
 227 0.0 31.4 94.0#





#95  
 Naphthalene  
 Concen: 0.283 ug/l  
 RT: 15.635 min Scan# 21  
 Delta R.T. -0.000 min  
 Lab File: VN086618.D  
 Acq: 14 May 2025 11:34

Instrument : MSVOA\_N  
 ClientSampleId : VN0514WBL01



Tgt Ion:128 Resp: 2217

Ion	Ratio	Lower	Upper
128	100		
127	0.0	10.2	15.4#
129	4.6	8.6	13.0#

