

Data Path : Z:\voasrv\HPCHEM1\MSVOA_N\Data\VN051525\
 Data File : VN086650.D
 Acq On : 15 May 2025 17:12
 Operator : JC\MD
 Sample : PB167995ZHE#12
 Misc : 5.0mL/MSVOA_N/WATER
 ALS Vial : 20 Sample Multiplier: 1

Instrument :
 MSVOA_N
 ClientSampleId :
 PB167995ZHE#12

Quant Time: May 16 05:30:50 2025
 Quant Method : Z:\voasrv\HPCHEM1\MSVOA_N\methods\82N041525W.M
 Quant Title : SW846 8260
 QLast Update : Wed Apr 16 04:19:23 2025
 Response via : Initial Calibration

Compound	R.T.	QIon	Response	Conc	Units	Dev(Min)

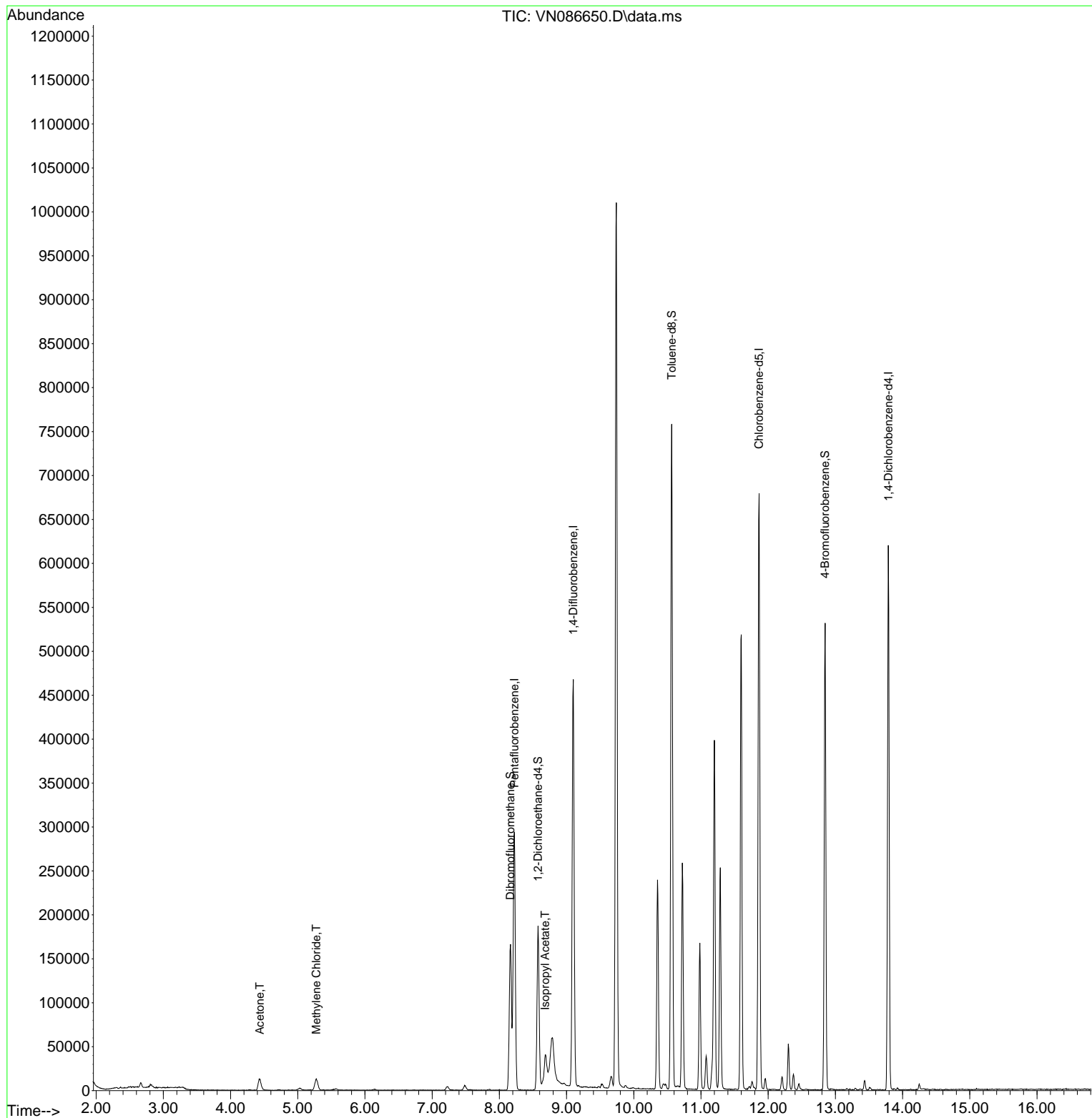
Internal Standards						
1) Pentafluorobenzene	8.224	168	220959	50.000	ug/l	0.00
34) 1,4-Difluorobenzene	9.100	114	420200	50.000	ug/l	0.00
63) Chlorobenzene-d5	11.865	117	410590	50.000	ug/l	0.00
72) 1,4-Dichlorobenzene-d4	13.788	152	174204	50.000	ug/l	0.00
System Monitoring Compounds						
33) 1,2-Dichloroethane-d4	8.577	65	152340	47.545	ug/l	0.00
Spiked Amount	50.000	Range	74 - 125	Recovery	=	95.100%
35) Dibromofluoromethane	8.165	113	125476	64.340	ug/l	0.00
Spiked Amount	50.000	Range	75 - 124	Recovery	=	128.680%#
50) Toluene-d8	10.565	98	540064	51.816	ug/l	0.00
Spiked Amount	50.000	Range	86 - 113	Recovery	=	103.640%
62) 4-Bromofluorobenzene	12.847	95	193687	50.948	ug/l	0.00
Spiked Amount	50.000	Range	77 - 121	Recovery	=	101.900%
Target Compounds						
						Qvalue
16) Acetone	4.436	43	26630	18.760	ug/l	93
20) Methylene Chloride	5.277	84	11116	3.753	ug/l #	81
43) Isopropyl Acetate	8.683	43	58045	6.132	ug/l #	76

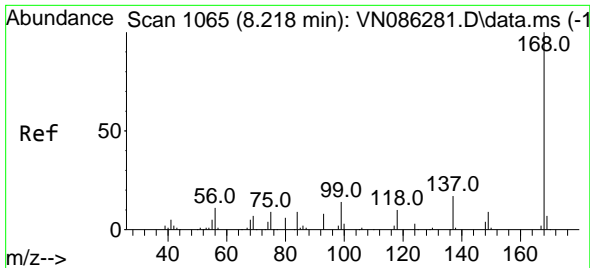
(#) = qualifier out of range (m) = manual integration (+) = signals summed

Data Path : Z:\voasrv\HPCHEM1\MSVOA_N\Data\VN051525\
 Data File : VN086650.D
 Acq On : 15 May 2025 17:12
 Operator : JC\MD
 Sample : PB167995ZHE#12
 Misc : 5.0mL/MSVOA_N/WATER
 ALS Vial : 20 Sample Multiplier: 1

Instrument :
 MSVOA_N
ClientSampleId :
 PB167995ZHE#12

Quant Time: May 16 05:30:50 2025
 Quant Method : Z:\voasrv\HPCHEM1\MSVOA_N\methods\82N041525W.M
 Quant Title : SW846 8260
 QLast Update : Wed Apr 16 04:19:23 2025
 Response via : Initial Calibration

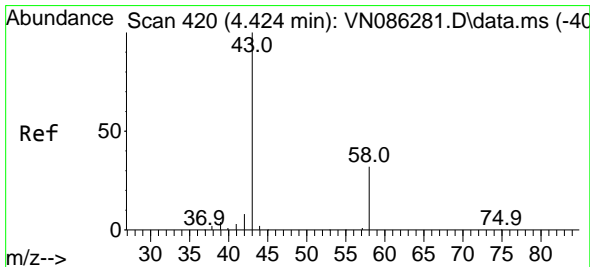
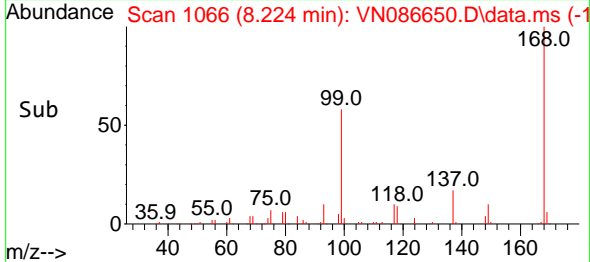
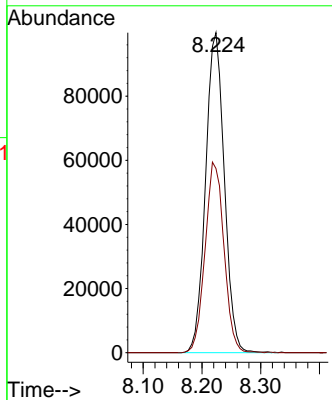
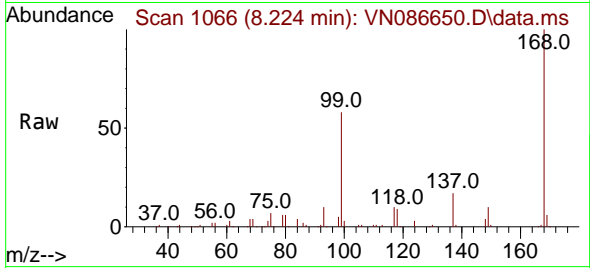




#1
 Pentafluorobenzene
 Concen: 50.000 ug/l
 RT: 8.224 min Scan# 1066
 Delta R.T. 0.006 min
 Lab File: VN086650.D
 Acq: 15 May 2025 17:12

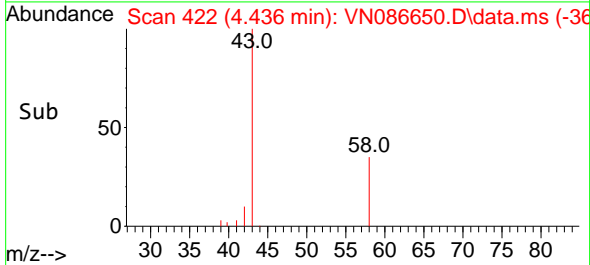
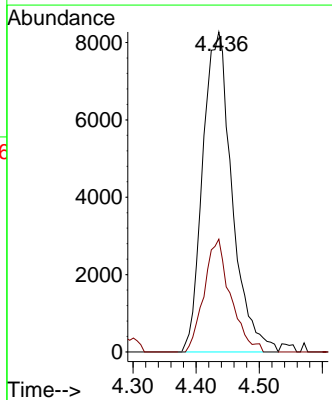
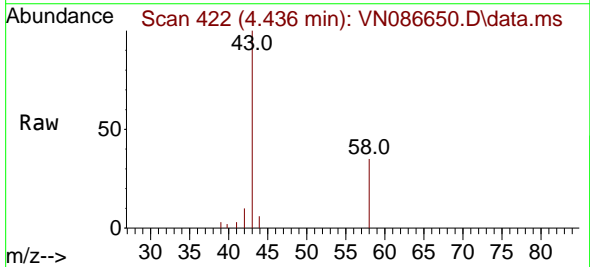
Instrument : MSVOA_N
 ClientSampleId : PB167995ZHE#12

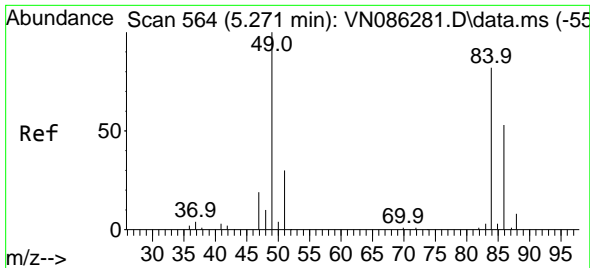
Tgt Ion:168 Resp: 220959
 Ion Ratio Lower Upper
 168 100
 99 57.5 52.5 78.7



#16
 Acetone
 Concen: 18.760 ug/l
 RT: 4.436 min Scan# 422
 Delta R.T. 0.012 min
 Lab File: VN086650.D
 Acq: 15 May 2025 17:12

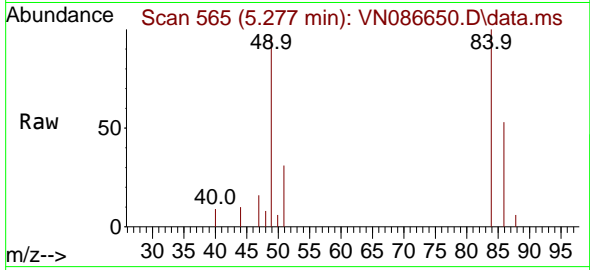
Tgt Ion: 43 Resp: 26630
 Ion Ratio Lower Upper
 43 100
 58 35.3 25.3 37.9



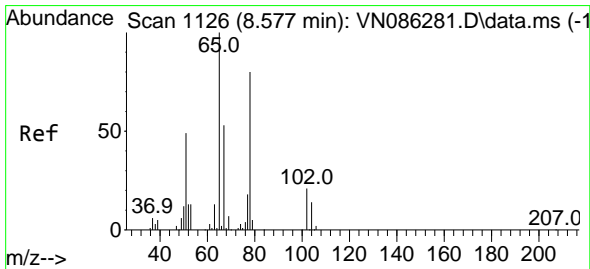
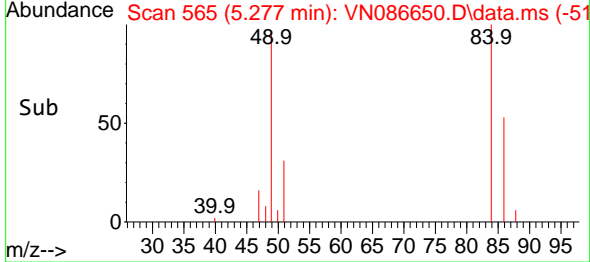
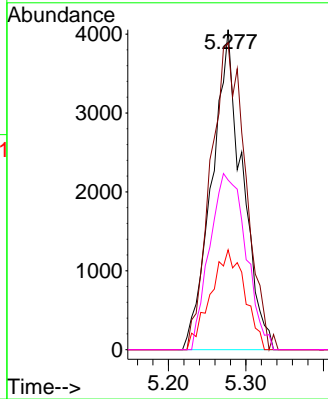


#20
 Methylene Chloride
 Concen: 3.753 ug/l
 RT: 5.277 min Scan# 511
 Delta R.T. 0.006 min
 Lab File: VN086650.D
 Acq: 15 May 2025 17:12

Instrument : MSVOA_N
 ClientSampleId : PB167995ZHE#12

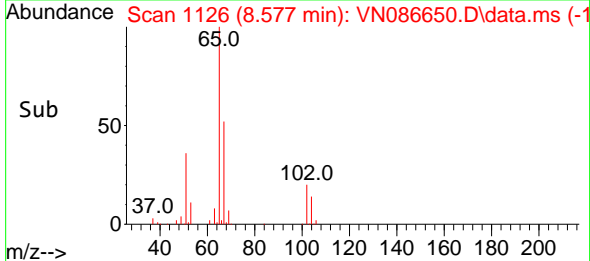
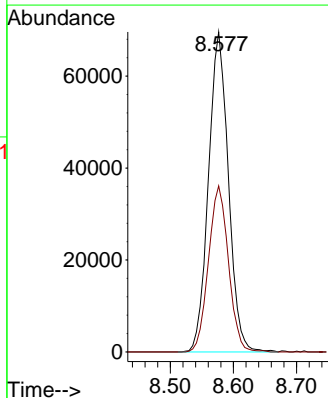
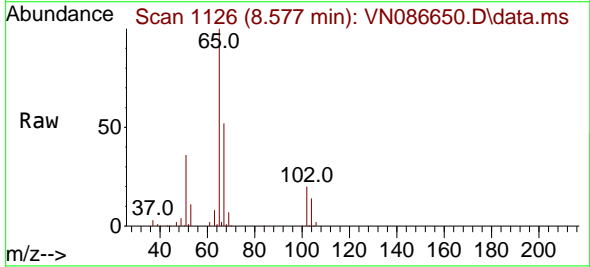


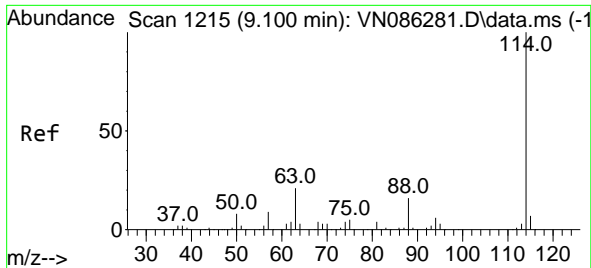
Tgt Ion	Resp	Lower	Upper
84	11116		
84	100		
49	95.9	98.2	147.2#
51	31.2	29.8	44.6
86	53.0	52.0	78.0



#33
 1,2-Dichloroethane-d4
 Concen: 47.545 ug/l
 RT: 8.577 min Scan# 1126
 Delta R.T. 0.000 min
 Lab File: VN086650.D
 Acq: 15 May 2025 17:12

Tgt Ion	Resp	Lower	Upper
65	152340		
65	100		
67	52.1	0.0	106.0

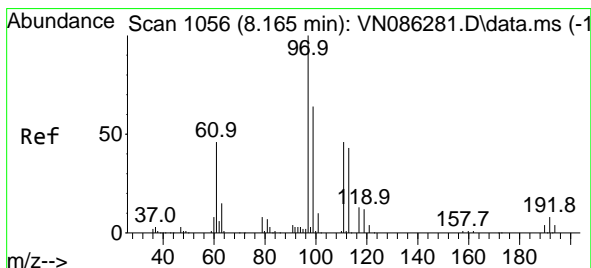
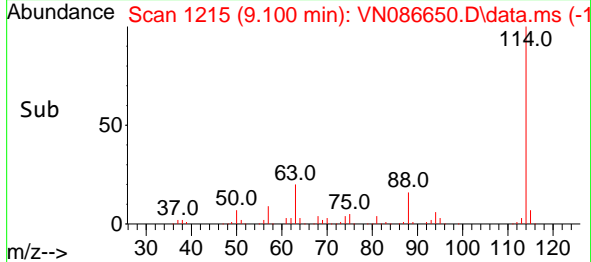
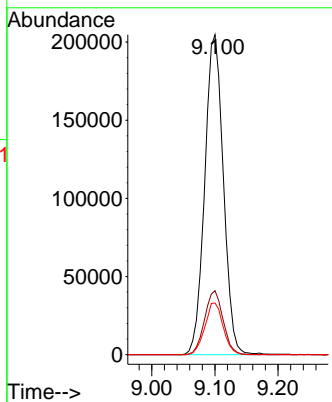
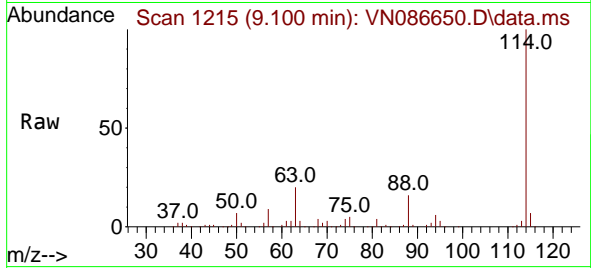




#34
 1,4-Difluorobenzene
 Concen: 50.000 ug/l
 RT: 9.100 min Scan# 11
 Delta R.T. 0.000 min
 Lab File: VN086650.D
 Acq: 15 May 2025 17:12

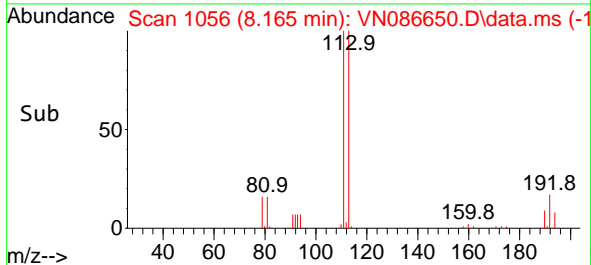
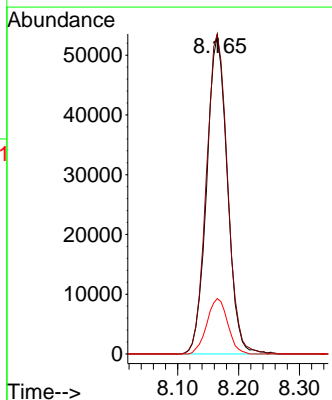
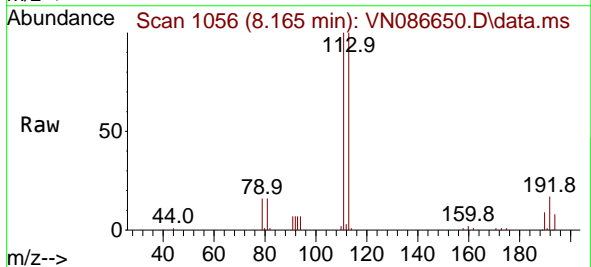
Instrument :
 MSVOA_N
 ClientSampleId :
 PB167995ZHE#12

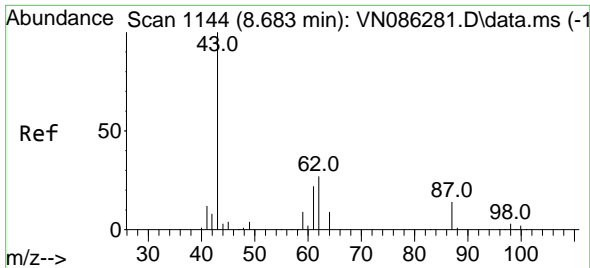
Tgt Ion	Resp	Lower	Upper
114	100		
63	20.0	0.0	42.6
88	16.2	0.0	31.8



#35
 Dibromofluoromethane
 Concen: 64.340 ug/l
 RT: 8.165 min Scan# 1056
 Delta R.T. 0.000 min
 Lab File: VN086650.D
 Acq: 15 May 2025 17:12

Tgt Ion	Resp	Lower	Upper
113	100		
111	103.0	83.4	125.0
192	17.5	13.7	20.5



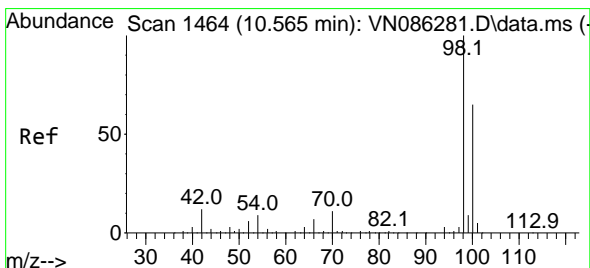
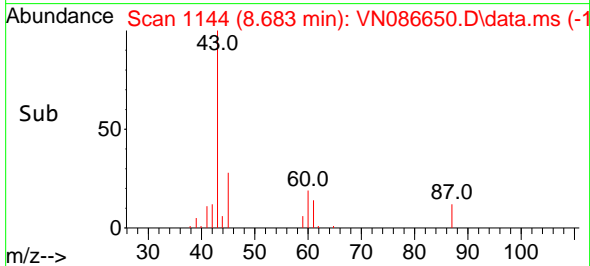
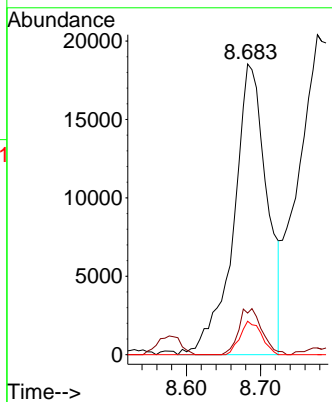
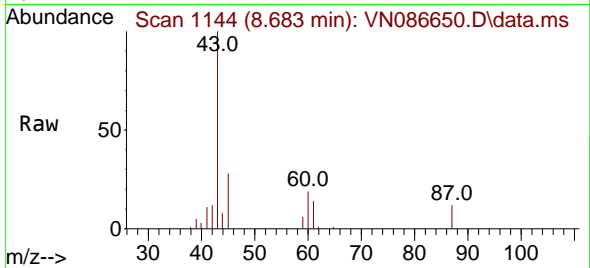


#43
 Isopropyl Acetate
 Concen: 6.132 ug/l
 RT: 8.683 min Scan# 1144
 Delta R.T. -0.000 min
 Lab File: VN086650.D
 Acq: 15 May 2025 17:12

Instrument : MSVOA_N
 ClientSampleId : PB167995ZHE#12

Tgt Ion: 43 Resp: 58045

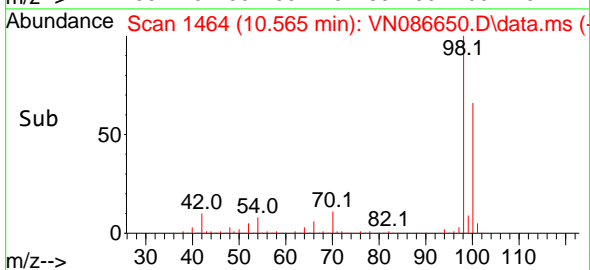
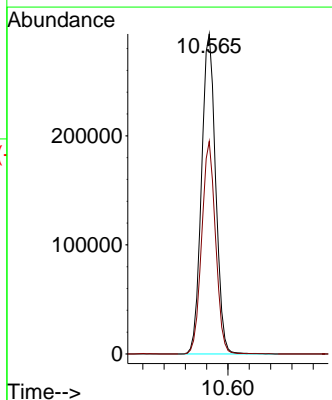
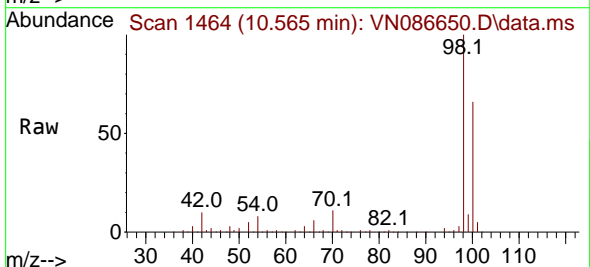
Ion	Ratio	Lower	Upper
43	100		
61	11.0	20.5	30.7#
87	7.4	10.5	15.7#

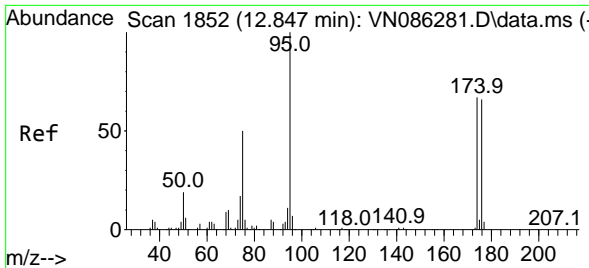


#50
 Toluene-d8
 Concen: 51.816 ug/l
 RT: 10.565 min Scan# 1464
 Delta R.T. 0.000 min
 Lab File: VN086650.D
 Acq: 15 May 2025 17:12

Tgt Ion: 98 Resp: 540064

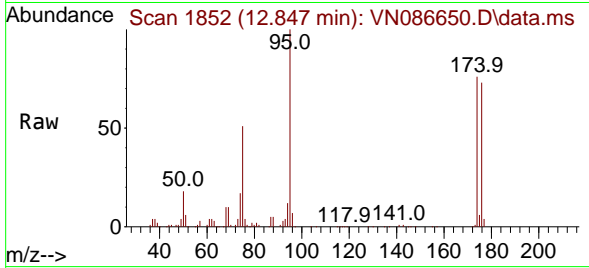
Ion	Ratio	Lower	Upper
98	100		
100	65.2	52.5	78.7





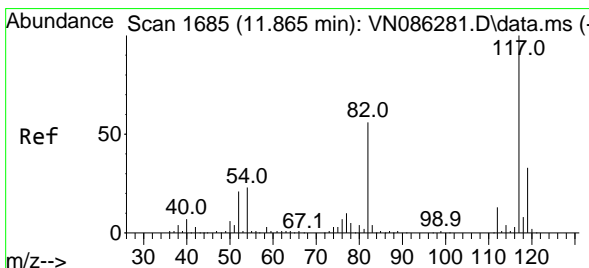
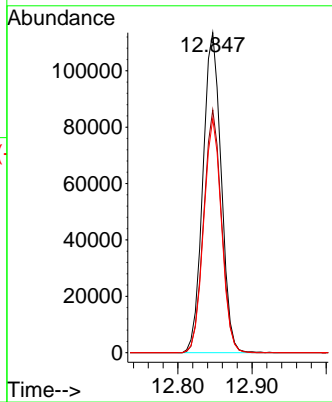
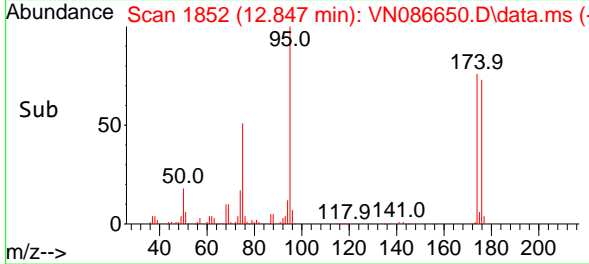
#62
 4-Bromofluorobenzene
 Concen: 50.948 ug/l
 RT: 12.847 min Scan# 1852
 Delta R.T. 0.000 min
 Lab File: VN086650.D
 Acq: 15 May 2025 17:12

Instrument : MSVOA_N
 ClientSampleId : PB167995ZHE#12

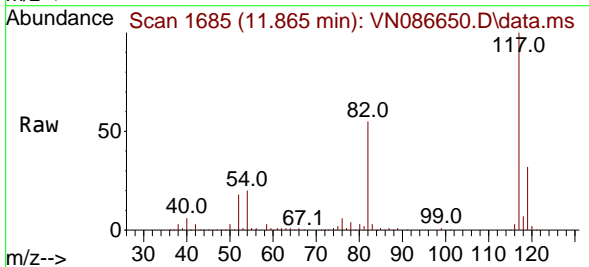


Tgt Ion: 95 Resp: 193687

Ion	Ratio	Lower	Upper
95	100		
174	74.5	0.0	133.4
176	71.4	0.0	129.2

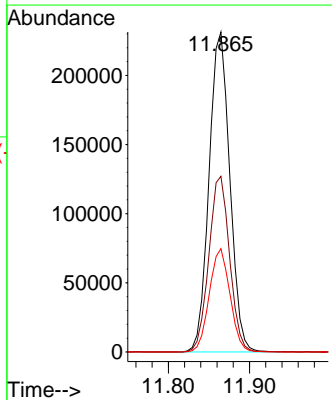
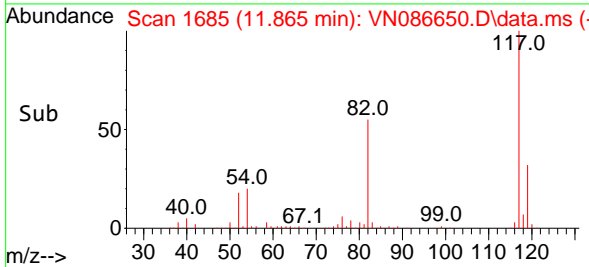


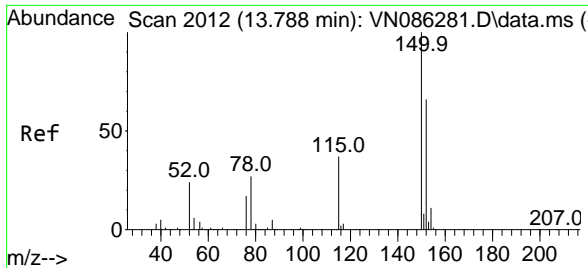
#63
 Chlorobenzene-d5
 Concen: 50.000 ug/l
 RT: 11.865 min Scan# 1685
 Delta R.T. 0.000 min
 Lab File: VN086650.D
 Acq: 15 May 2025 17:12



Tgt Ion: 117 Resp: 410590

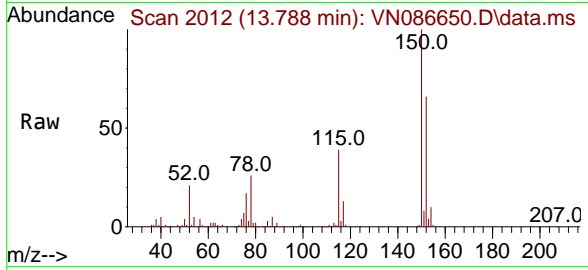
Ion	Ratio	Lower	Upper
117	100		
82	54.9	44.7	67.1
119	32.3	26.4	39.6





#72
 1,4-Dichlorobenzene-d4
 Concen: 50.000 ug/l
 RT: 13.788 min Scan# 20
 Delta R.T. 0.000 min
 Lab File: VN086650.D
 Acq: 15 May 2025 17:12

Instrument : MSVOA_N
 ClientSampleId : PB167995ZHE#12



Tgt Ion:152 Resp: 174204

Ion	Ratio	Lower	Upper
152	100		
115	60.7	31.9	95.9
150	156.9	0.0	352.0

