

Data Path : Z:\voasrv\HPCHEM1\MSVOA\_N\Data\VN051622\  
 Data File : VN072515.D  
 Acq On : 16 May 2022 20:58  
 Operator : JC\MD  
 Sample : N2804-05  
 Misc : 5.0mL/MSVOA\_N/WATER  
 ALS Vial : 22 Sample Multiplier: 1

Instrument :  
 MSVOA\_N  
 ClientSampleId :  
 FETWP-3

Integration Parameters: RTEINT3.P  
 Integrator: RTE  
 Smoothing : OFF Filtering: 5  
 Sampling : 1 Min Area: 0 % of largest Peak  
 Start Thrs: 0.2 Max Peaks: 100  
 Stop Thrs : 0 Peak Location: TOP

If leading or trailing edge < 100 prefer < Baseline drop else tangent >  
 Peak separation: 5

Method : Z:\voasrv\HPCHEM1\MSVOA\_N\methods\624N051622W.M  
 Title : METHOD 624 VOLATILE ORGANIC ANALYSIS

Signal : TIC: VN072515.D\data.ms

peak #	R.T. min	first scan	max scan	last scan	PK TY	peak height	corr. area	corr. % max.	% of total
1	2.240	37	43	47	rBV3	13387	25036	5.95%	1.464%
2	2.769	125	133	141	rVB5	10045	26115	6.21%	1.527%
3	4.575	431	440	445	rBV4	4459	12365	2.94%	0.723%
4	5.316	557	566	576	rBV	15411	49249	11.71%	2.880%
5	5.957	672	675	682	rVB	4521	8740	2.08%	0.511%
6	7.304	895	904	916	rBV2	23524	71449	16.99%	4.178%
7	7.657	955	964	976	rBV2	60198	151770	36.09%	8.875%
8	8.434	1086	1096	1105	rBV	81574	186477	44.34%	10.905%
9	8.963	1179	1186	1196	rVB2	127435	262691	62.46%	15.362%
10	10.439	1429	1437	1445	rBV	223915	420544	100.00%	24.592%
11	11.739	1651	1658	1671	rVB	164479	286222	68.06%	16.738%
12	12.727	1820	1826	1837	rVB2	121915	209392	49.79%	12.245%

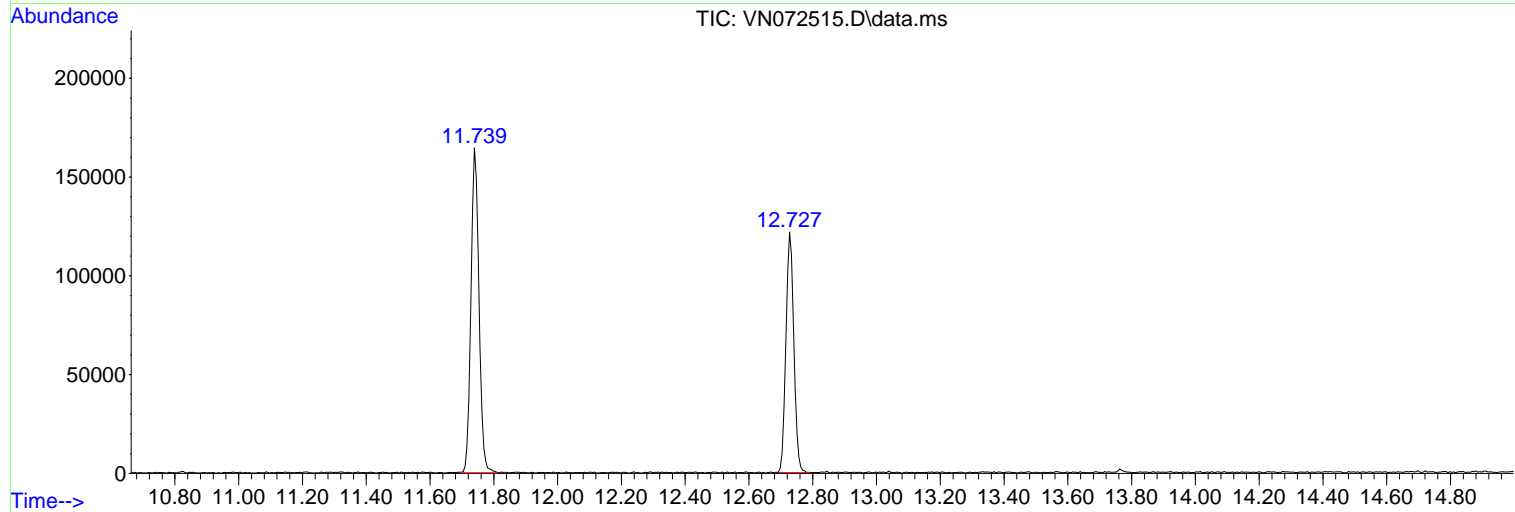
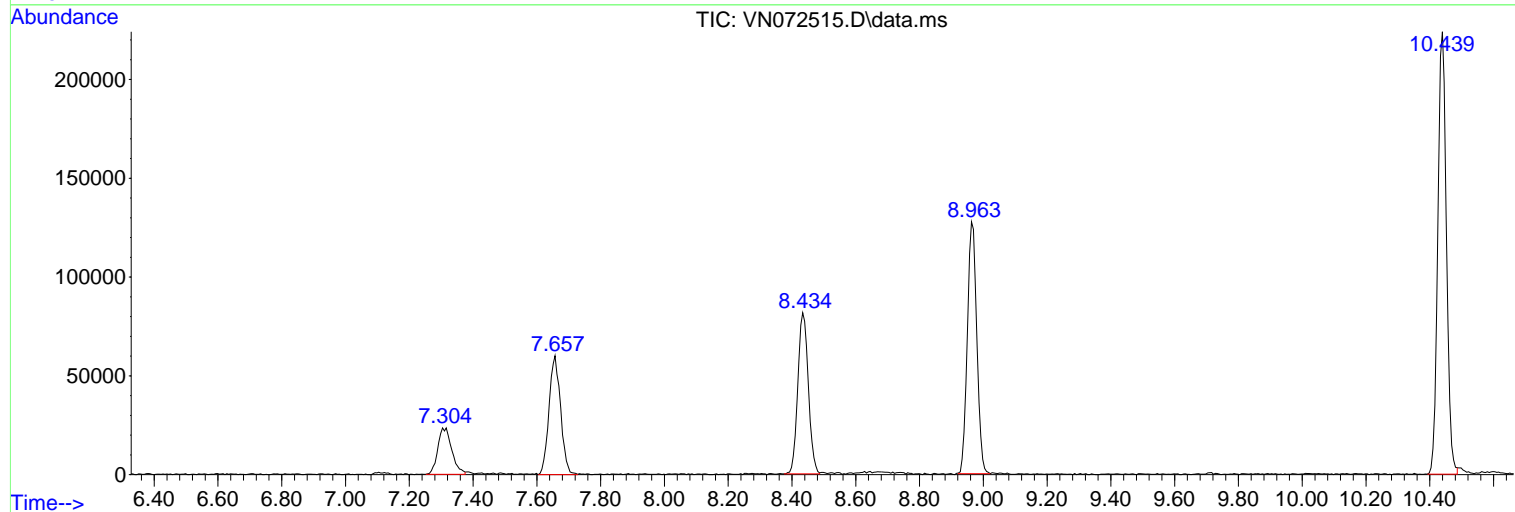
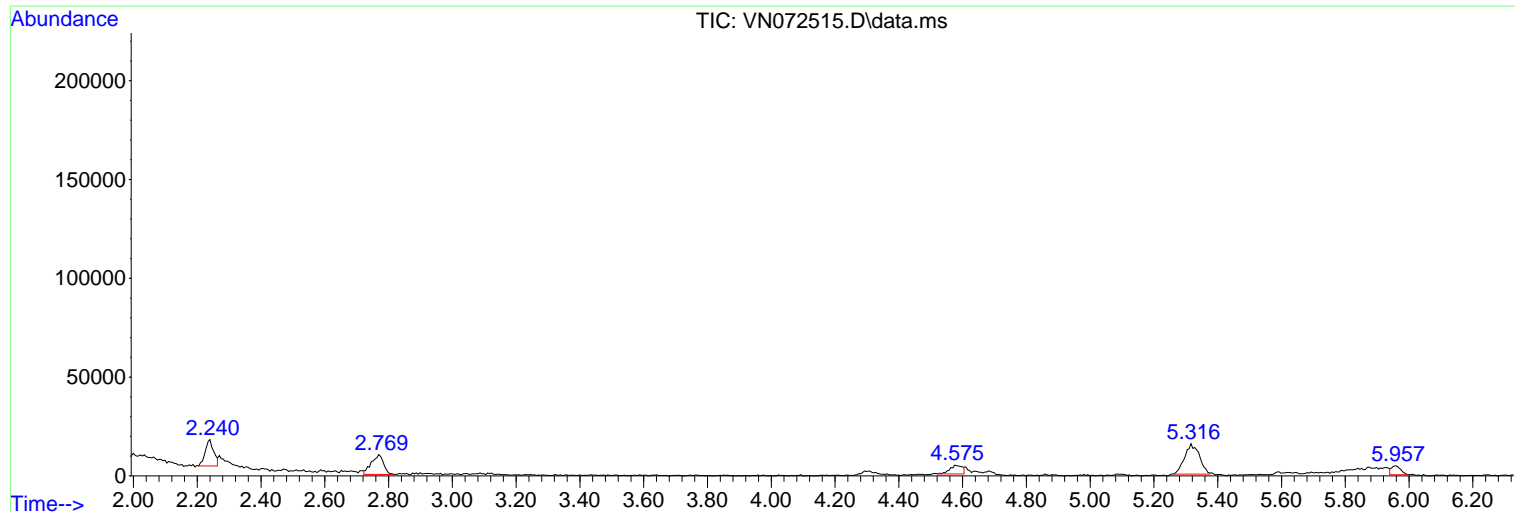
Sum of corrected areas: 1710050

Data Path : Z:\voasrv\HPCHEM1\MSVOA\_N\Data\VN051622\  
 Data File : VN072515.D  
 Acq On : 16 May 2022 20:58  
 Operator : JC\MD  
 Sample : N2804-05  
 Misc : 5.0mL/MSVOA\_N/WATER  
 ALS Vial : 22 Sample Multiplier: 1

Instrument :  
 MSVOA\_N  
 ClientSampleId :  
 FETWP-3

Quant Method : Z:\voasrv\HPCHEM1\MSVOA\_N\methods\624N051622W.M  
 Quant Title : METHOD 624 VOLATILE ORGANIC ANALYSIS

TIC Library : C:\Database\NIST20.L  
 TIC Integration Parameters: LSCINT.P



Data Path : Z:\voasrv\HPCHEM1\MSVOA\_N\Data\VN051622\  
 Data File : VN072515.D  
 Acq On : 16 May 2022 20:58  
 Operator : JC\MD  
 Sample : N2804-05  
 Misc : 5.0mL/MSVOA\_N/WATER  
 ALS Vial : 22 Sample Multiplier: 1

Instrument :  
 MSVOA\_N  
 ClientSampleId :  
 FETWP-3

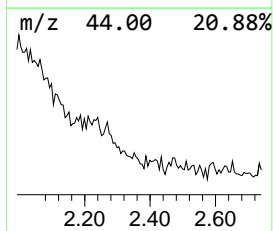
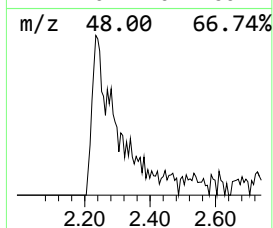
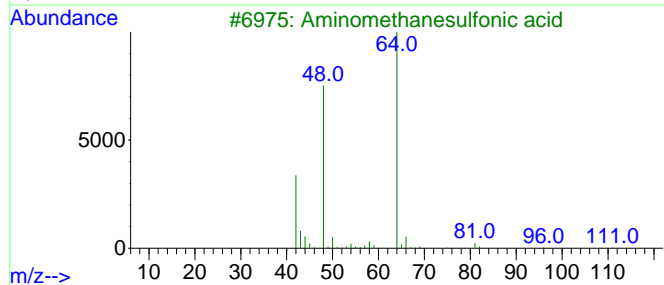
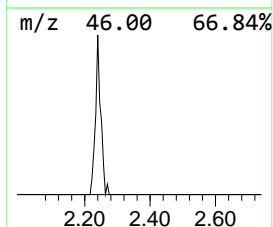
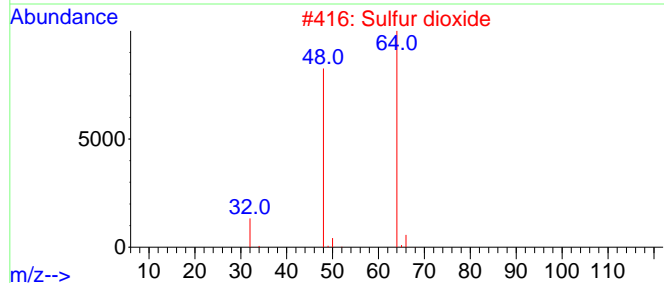
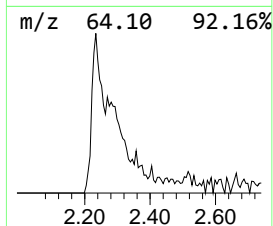
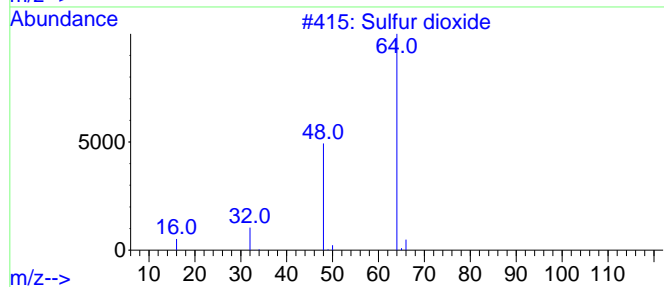
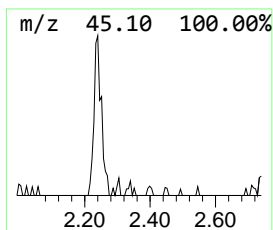
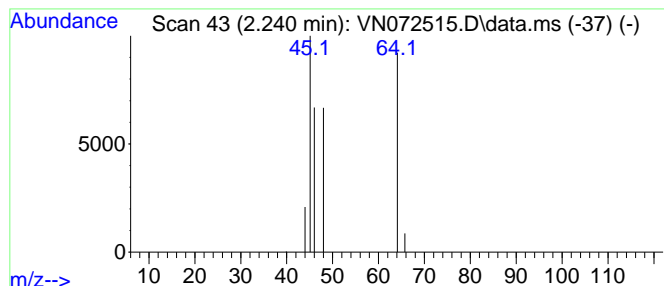
Quant Method : Z:\voasrv\HPCHEM1\MSVOA\_N\methods\624N051622W.M  
 Quant Title : METHOD 624 VOLATILE ORGANIC ANALYSIS

TIC Library : C:\Database\NIST20.L  
 TIC Integration Parameters: LSCINT.P

\*\*\*\*\*  
 Peak Number 1 unknown2.240 Concentration Rank 4

R.T.	EstConc	Area	Relative to ISTD	R.T.
2.240	4.95 ug/l	25036	Bromochloromethane	7.657

Hit#	of 5	Tentative ID	MW	MolForm	CAS#	Qual
1		Sulfur dioxide	64	O2S	007446-09-5	45
2		Sulfur dioxide	64	O2S	007446-09-5	45
3		Aminomethanesulfonic acid	111	CH5NO3S	013881-91-9	9
4		Aminomethanesulfonic acid	111	CH5NO3S	013881-91-9	9
5		Phosphine, methyl-	48	CH5P	000593-54-4	9



Data Path : Z:\voasrv\HPCHEM1\MSVOA\_N\Data\VN051622\  
Data File : VN072515.D  
Acq On : 16 May 2022 20:58  
Operator : JC\MD  
Sample : N2804-05  
Misc : 5.0mL/MSVOA\_N/WATER  
ALS Vial : 22 Sample Multiplier: 1

Instrument :  
MSVOA\_N  
ClientSampleId :  
FETWP-3

Quant Method : Z:\voasrv\HPCHEM1\MSVOA\_N\methods\624N051622W.M  
Quant Title : METHOD 624 VOLATILE ORGANIC ANALYSIS

TIC Library : C:\Database\NIST20.L  
TIC Integration Parameters: LSCINT.P

TIC Top Hit name	RT	EstConc	Units	Response	--Internal Standard--			
					#	RT	Resp	Conc
unknown2.240	2.240	5.0	ug/l	25036	1	7.657	151770	30.0