

Data Path : Z:\VOASRV\HPCHEM1\MSVOA N\DATA\VN051719\  
 Data File : VN055620.D  
 Acq On : 17 May 2019 19:07  
 Operator : JC/SP  
 Sample : K2902-05  
 Misc : 5.00mL/MSVOA N/WATER  
 ALS Vial : 25 Sample Multiplier: 1

Instrument :  
 MSVOA\_N  
 ClientSampled :

Quant Time: May 18 03:11:36 2019  
 Quant Method : Z:\VOASRV\HPCHEM1\MSVOA\_N\METHODS\82N051719W.M  
 Quant Title : SW846 8260  
 QLast Update : Fri May 17 23:54:12 2019  
 Response via : Initial Calibration

Internal Standards	R.T.	QIon	Response	Conc	Units	Dev(Min)
1) Pentafluorobenzene	7.67	168	416197	50.00	ug/l	0.00
34) 1,4-Difluorobenzene	8.59	114	592627	50.00	ug/l	0.00
63) Chlorobenzene-d5	11.41	117	500206	50.00	ug/l	0.00
72) 1,4-Dichlorobenzene-d4	13.35	152	197399	50.00	ug/l	0.00

## System Monitoring Compounds

33) 1,2-Dichloroethane-d4	8.03	65	196102	42.98	ug/l	0.00
Spiked Amount	50.000		Recovery	=	85.96%	
35) Dibromofluoromethane	7.59	113	180868	48.04	ug/l	0.00
Spiked Amount	50.000		Recovery	=	96.08%	
50) Toluene-d8	10.09	98	684723	48.10	ug/l	0.00
Spiked Amount	50.000		Recovery	=	96.20%	
62) 4-Bromofluorobenzene	12.40	95	221422	45.05	ug/l	0.00
Spiked Amount	50.000		Recovery	=	90.10%	

## Target Compounds

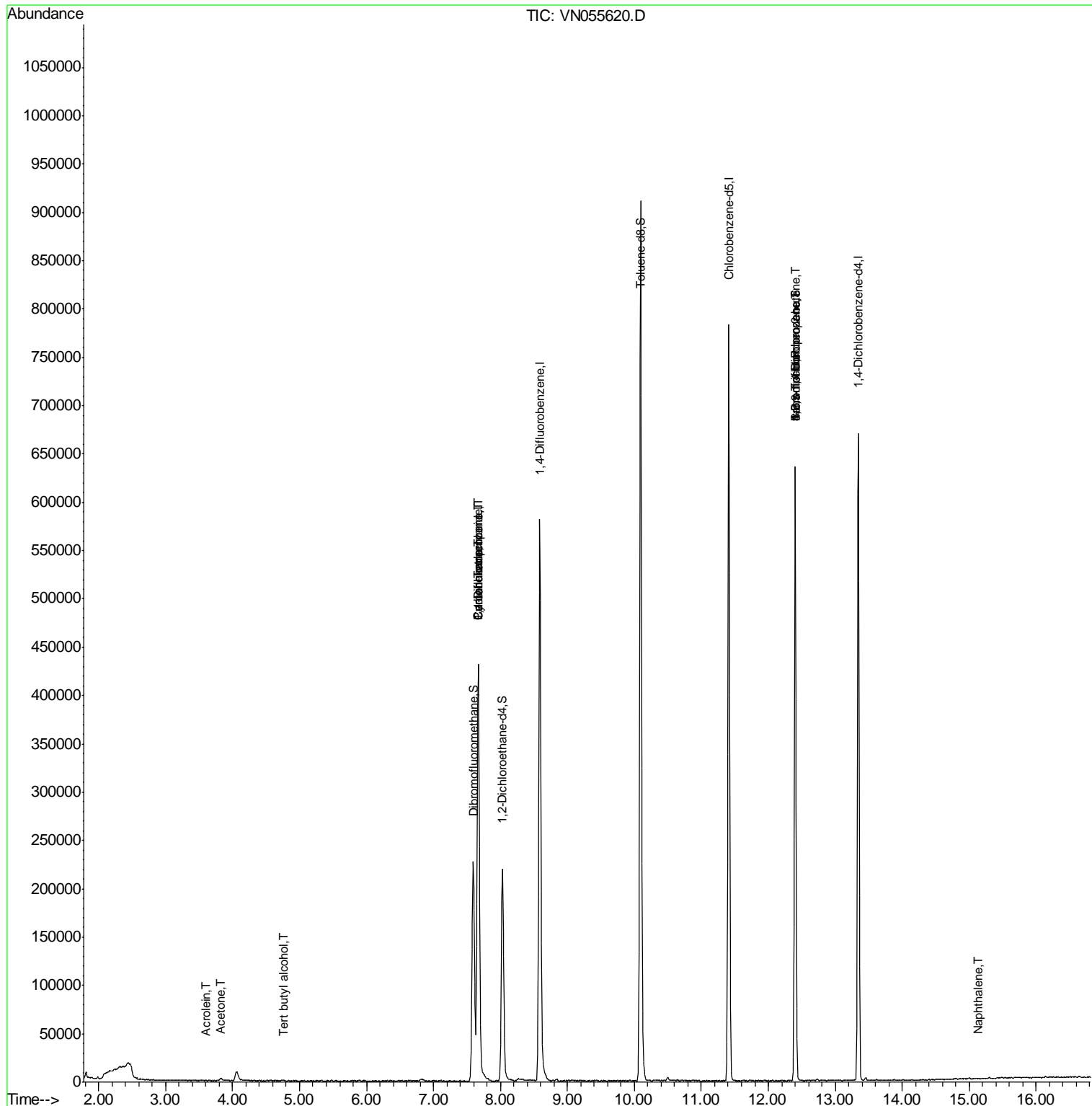
						Qvalue
11) Tert butyl alcohol	4.77	59	221	0.260	ug/l #	74
13) Acrolein	3.62	56	29	1.429	ug/l #	1
16) Acetone	3.83	43	3676	1.974	ug/l #	87
31) Cyclohexane	7.67	56	6718	0.993	ug/l #	1
36) 1,1-Dichloropropene	7.67	75	25074	4.746	ug/l #	48
38) Carbon Tetrachloride	7.67	117	33922	6.008	ug/l #	15
71) Bromoform	12.40	173	1383	0.401	ug/l #	1
73) Isopropylbenzene	12.24	105	173	Below Cal	#	48
76) 1,2,3-Trichloropropane	12.40	75	102463	25.438	ug/l #	100
79) 2-Chlorotoluene	12.67	91	258	Below Cal	#	39
80) 1,3,5-Trimethylbenzene	12.73	105	252	Below Cal	#	28
81) trans-1,4-Dichloro-2-buten	12.40	75	102463	65.390	ug/l #	17
83) tert-Butylbenzene	12.99	119	59	Below Cal	#	28
84) 1,2,4-Trimethylbenzene	13.04	105	235	Below Cal	#	30
85) sec-Butylbenzene	13.17	105	367	Below Cal	#	56
86) p-Isopropyltoluene	13.29	119	455	Below Cal	#	51
95) Naphthalene	15.14	128	483	1.810	ug/l #	69

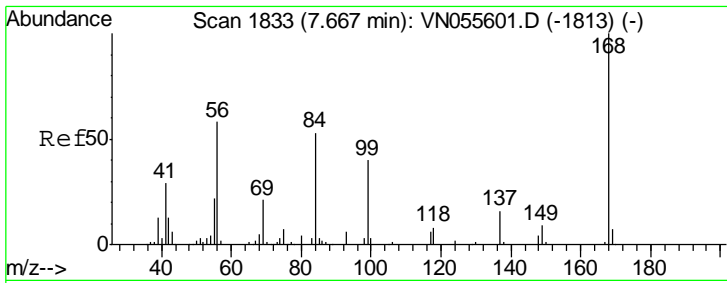
(#) = qualifier out of range (m) = manual integration (+) = signals summed

Data Path : Z:\VOASRV\HPCHEM1\MSVOA N\DATA\VN051719\  
 Data File : VN055620.D  
 Acq On : 17 May 2019 19:07  
 Operator : JC/SP  
 Sample : K2902-05  
 Misc : 5.00mL/MSVOA N/WATER  
 ALS Vial : 25 Sample Multiplier: 1

Instrument :  
 MSVOA\_N  
 ClientSampled :

Quant Time: May 18 03:11:36 2019  
 Quant Method : Z:\VOASRV\HPCHEM1\MSVOA\_N\METHODS\82N051719W.M  
 Quant Title : SW846 8260  
 QLast Update : Fri May 17 23:54:12 2019  
 Response via : Initial Calibration

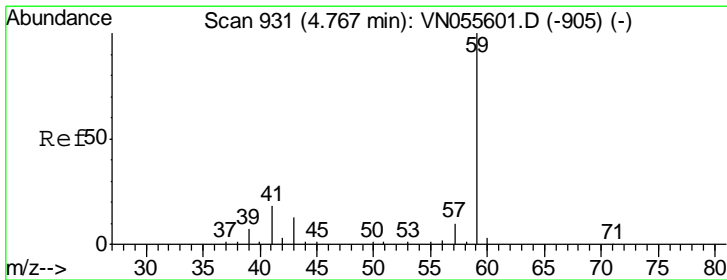
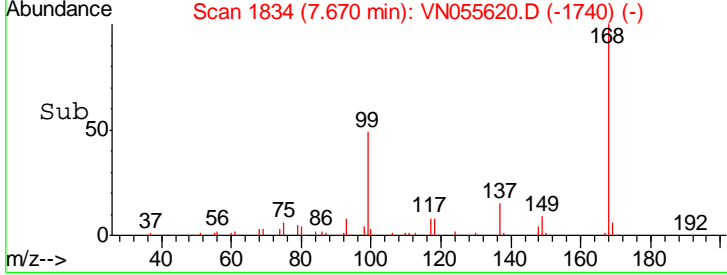
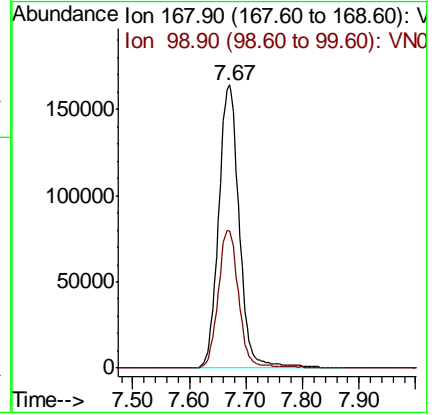
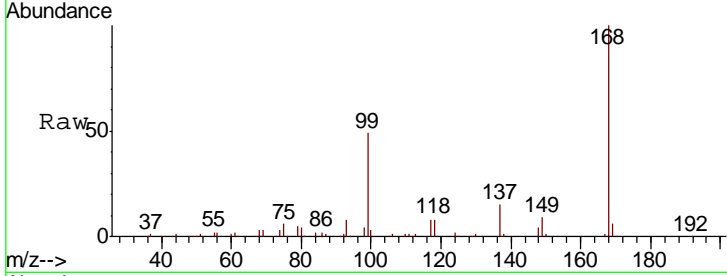




#1  
 Pentafluorobenzene  
 Concen: 50.000 ug/l  
 RT: 7.67 min Scan# 1834  
 Delta R.T. 0.00 min  
 Lab File: VN055620.D  
 Acq: 17 May 2019 19:07

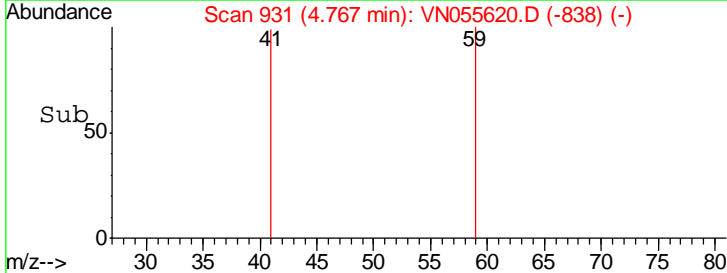
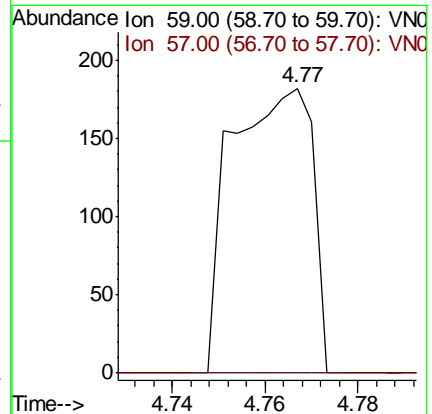
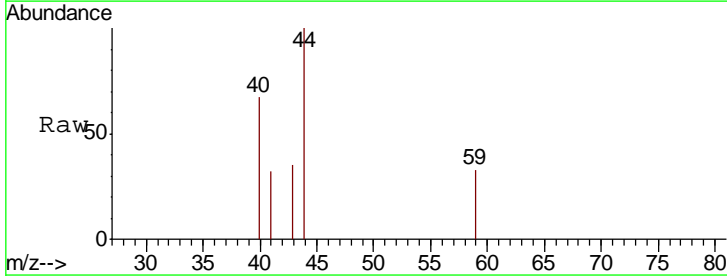
Instrument :  
 MSVOA\_N  
 ClientSampled :

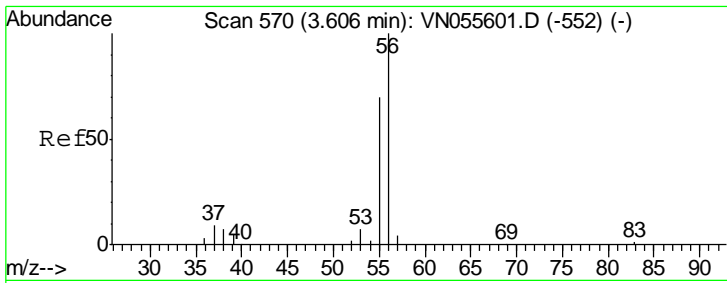
Tgt Ion	Resp	Lower	Upper
168	100		
99	48.5	40.2	60.2



#11  
 Tert butyl alcohol  
 Concen: 0.260 ug/l  
 RT: 4.77 min Scan# 931  
 Delta R.T. 0.00 min  
 Lab File: VN055620.D  
 Acq: 17 May 2019 19:07

Tgt Ion	Resp	Lower	Upper
59	100		
57	0.0	7.8	11.6#

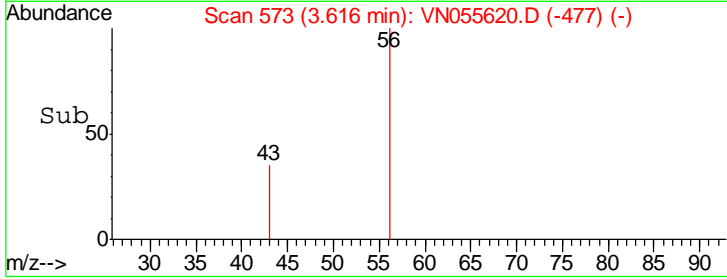
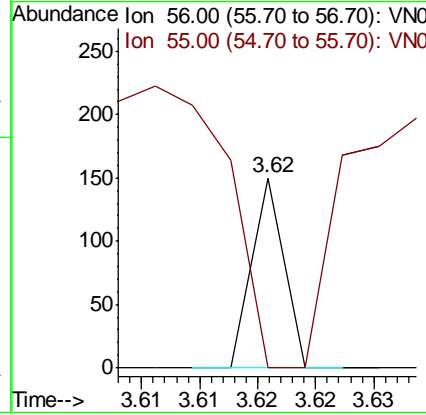
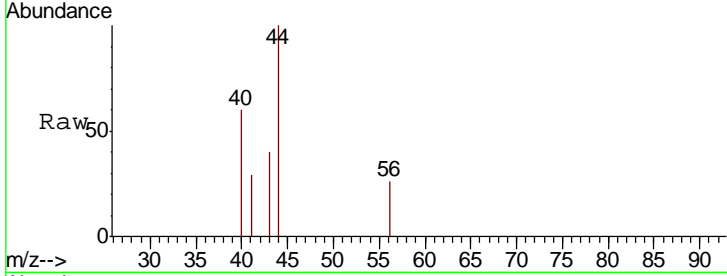




#13  
 Acrolein  
 Concen: 1.429 ug/l  
 RT: 3.62 min Scan# 573  
 Delta R.T. 0.01 min  
 Lab File: VN055620.D  
 Acq: 17 May 2019 19:07

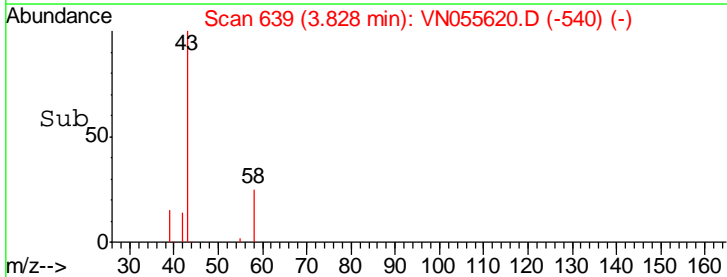
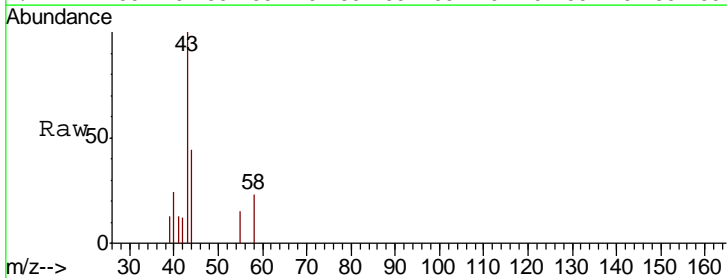
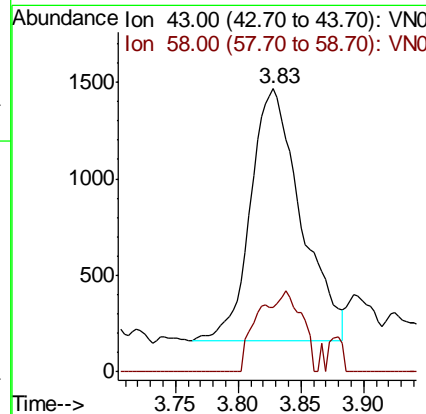
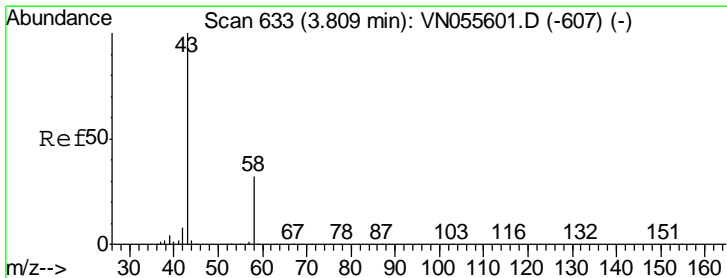
Instrument :  
 MSVOA\_N  
 ClientSampled :

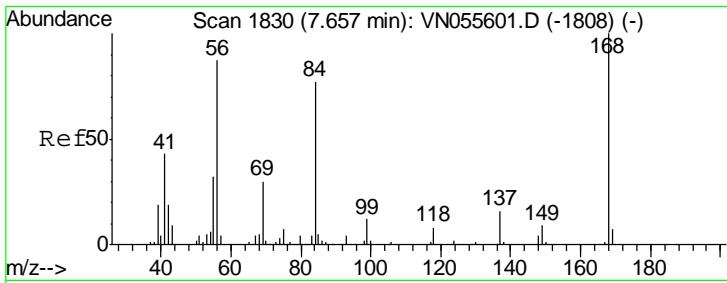
Tgt Ion	Resp	Lower	Upper
56	100		
55	655.2	56.5	84.7#



#16  
 Acetone  
 Concen: 1.974 ug/l  
 RT: 3.83 min Scan# 639  
 Delta R.T. 0.02 min  
 Lab File: VN055620.D  
 Acq: 17 May 2019 19:07

Tgt Ion	Resp	Lower	Upper
43	100		
58	25.3	26.0	39.0#

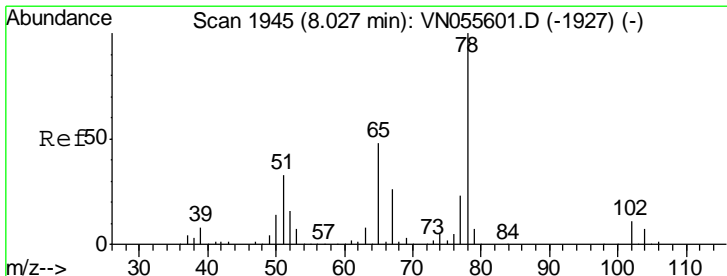
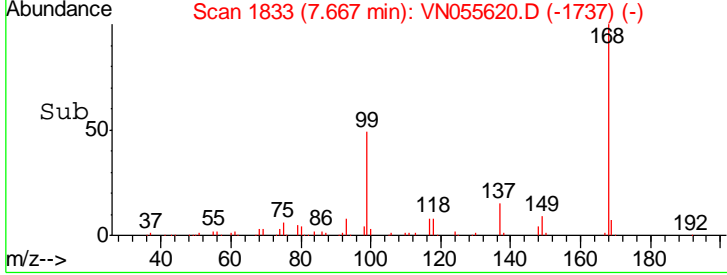
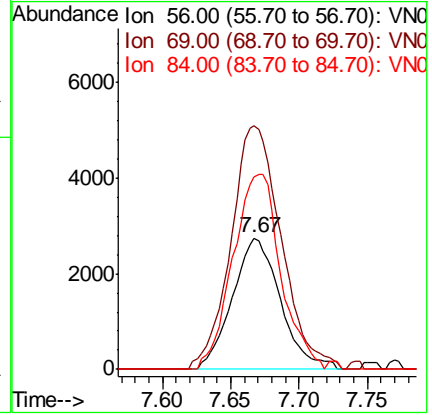
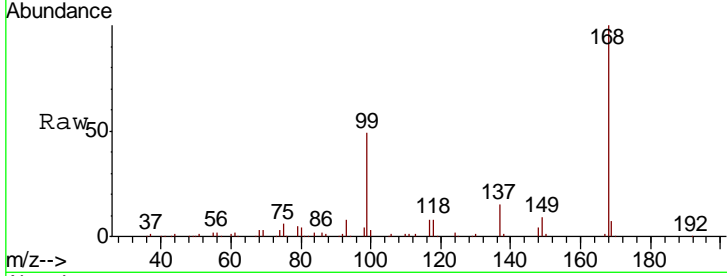




#31  
 Cyclohexane  
 Concen: 0.993 ug/l  
 RT: 7.67 min Scan# 1833  
 Delta R.T. 0.01 min  
 Lab File: VN055620.D  
 Acq: 17 May 2019 19:07

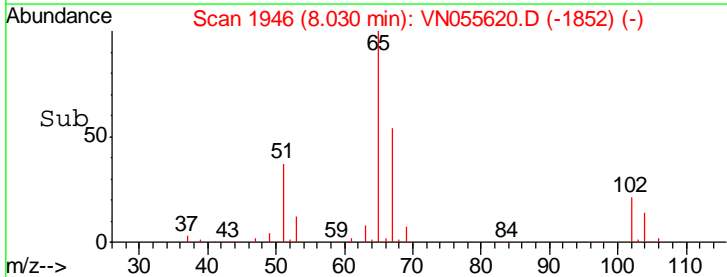
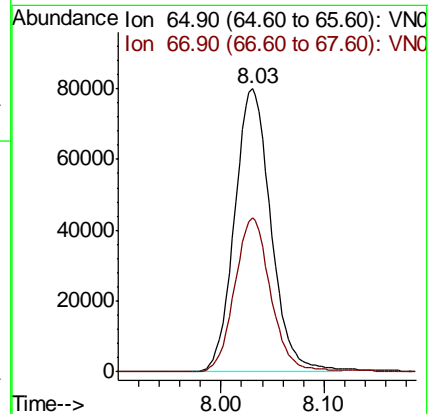
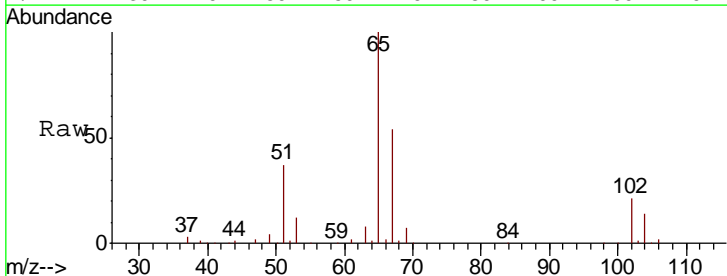
Instrument :  
 MSVOA\_N  
 ClientSampled :

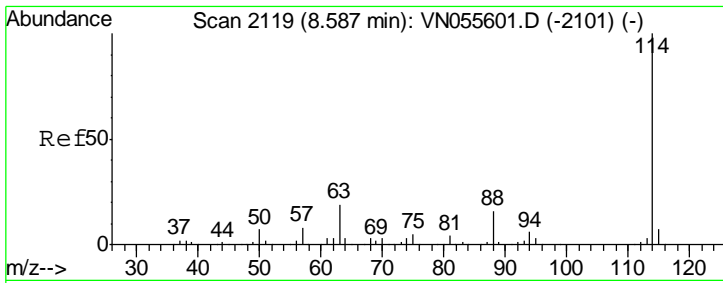
Tgt Ion	Resp	Lower	Upper
56	6718		
69	185.5	27.2	40.8#
84	146.2	71.3	106.9#



#33  
 1,2-Dichloroethane-d4  
 Concen: 42.983 ug/l  
 RT: 8.03 min Scan# 1946  
 Delta R.T. 0.00 min  
 Lab File: VN055620.D  
 Acq: 17 May 2019 19:07

Tgt Ion	Resp	Lower	Upper
65	196102		
67	53.9	0.0	108.6

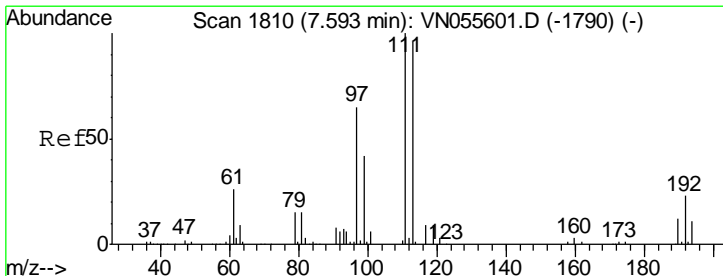
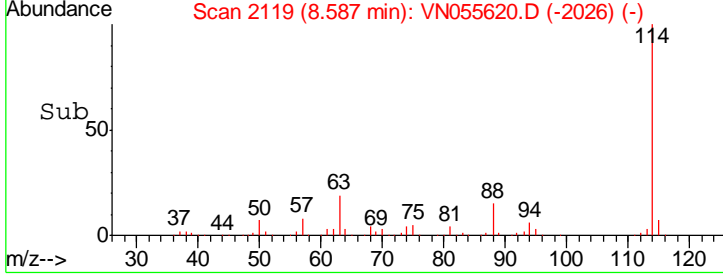
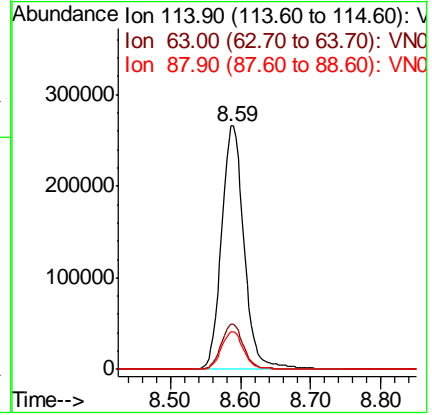
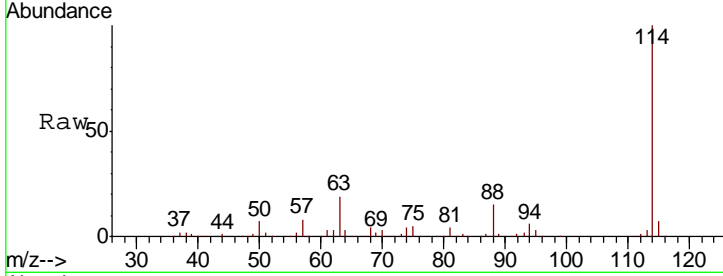




#34  
 1,4-Difluorobenzene  
 Concen: 50.000 ug/l  
 RT: 8.59 min Scan# 2119  
 Delta R.T. 0.00 min  
 Lab File: VN055620.D  
 Acq: 17 May 2019 19:07

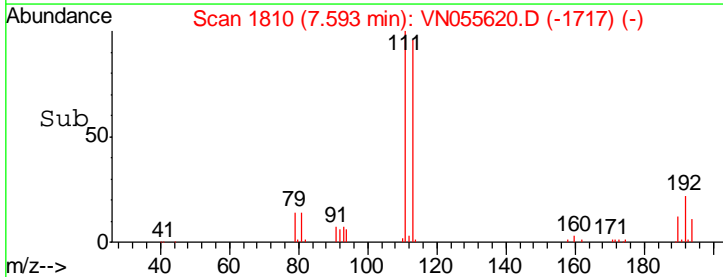
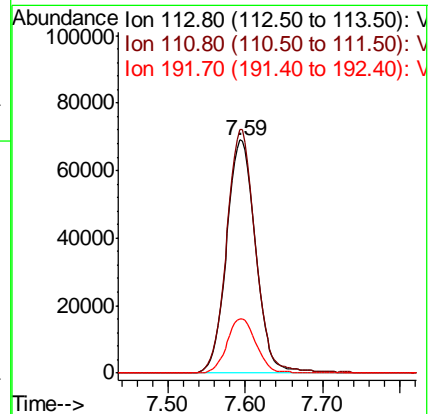
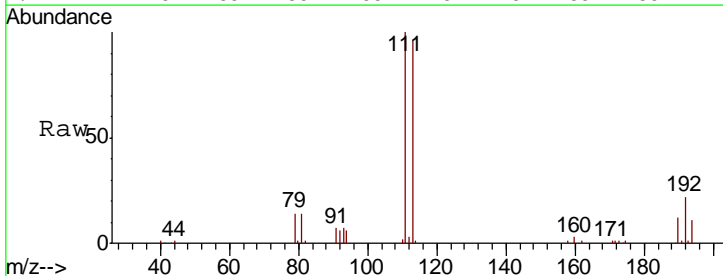
Instrument :  
 MSVOA\_N  
 ClientSampled :

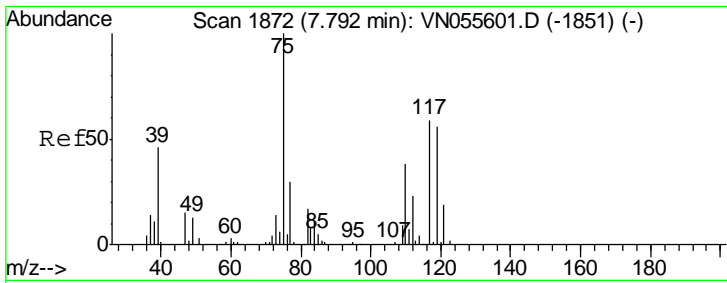
Tgt Ion	Resp	Lower	Upper
114	592627		
63	18.7	0.0	38.2
88	15.3	0.0	31.0



#35  
 Dibromofluoromethane  
 Concen: 48.044 ug/l  
 RT: 7.59 min Scan# 1810  
 Delta R.T. 0.00 min  
 Lab File: VN055620.D  
 Acq: 17 May 2019 19:07

Tgt Ion	Resp	Lower	Upper
113	180868		
111	102.6	82.5	123.7
192	23.4	18.7	28.1

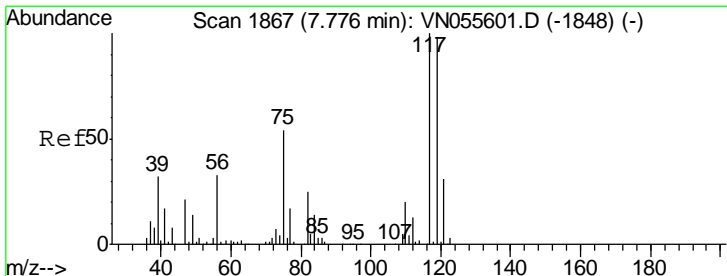
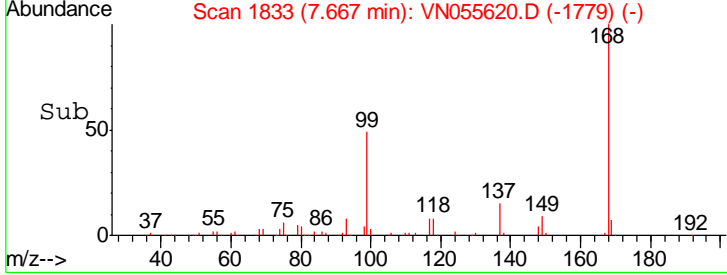
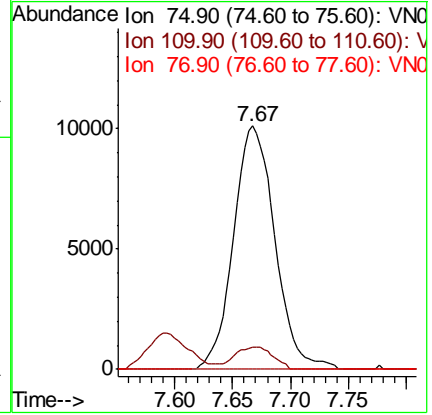
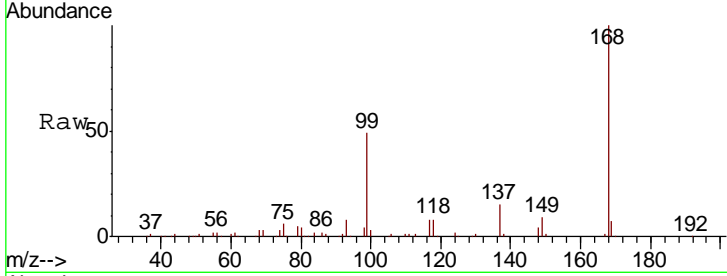




#36  
 1,1-Dichloropropene  
 Concen: 4.746 ug/l  
 RT: 7.67 min Scan# 1833  
 Delta R.T. -0.13 min  
 Lab File: VN055620.D  
 Acq: 17 May 2019 19:07

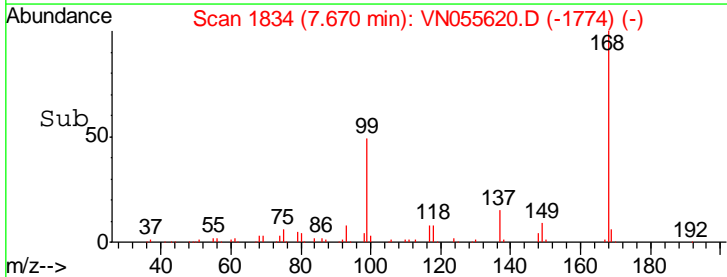
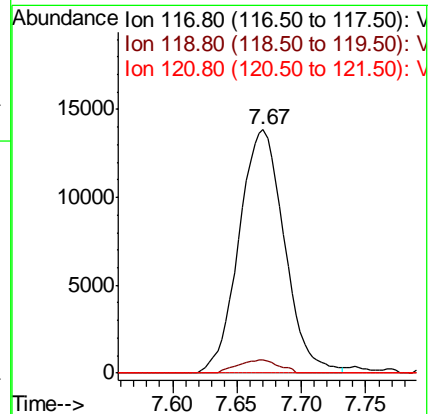
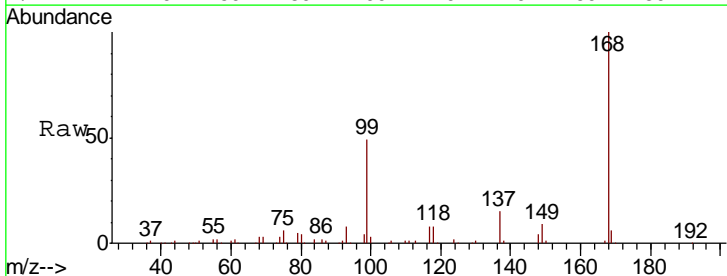
Instrument :  
 MSVOA\_N  
 ClientSampled :

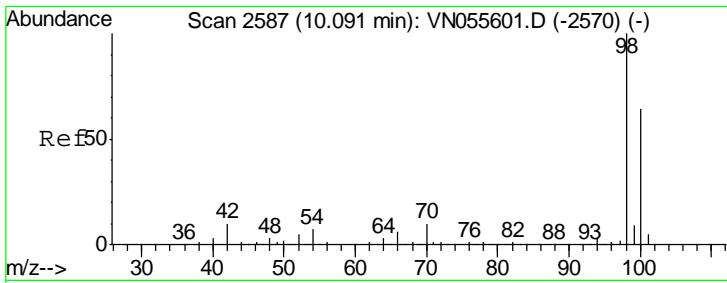
Tgt Ion	Resp	Lower	Upper
75	100		
110	8.5	18.6	55.6#
77	0.0	24.9	37.3#



#38  
 Carbon Tetrachloride  
 Concen: 6.008 ug/l  
 RT: 7.67 min Scan# 1834  
 Delta R.T. -0.11 min  
 Lab File: VN055620.D  
 Acq: 17 May 2019 19:07

Tgt Ion	Resp	Lower	Upper
117	100		
119	5.2	77.8	116.8#
121	0.0	24.6	37.0#

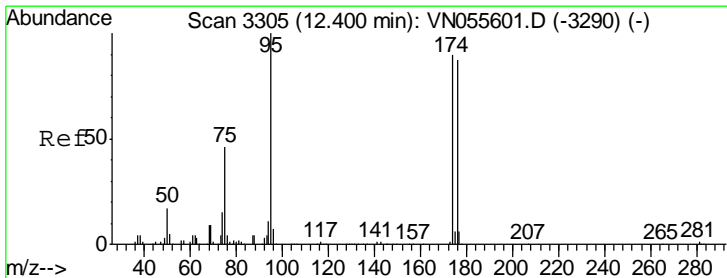
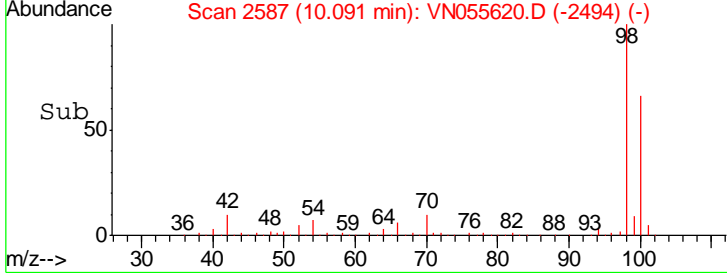
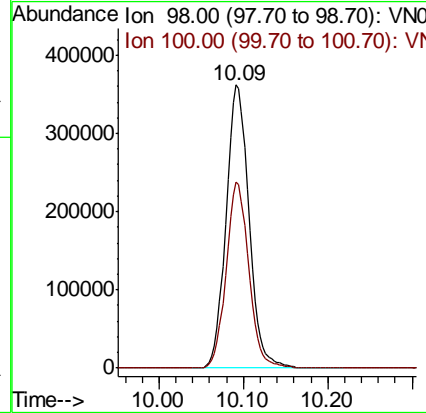
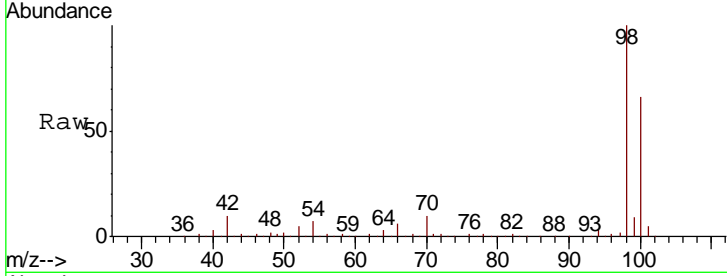




#50  
 Toluene-d8  
 Concen: 48.103 ug/l  
 RT: 10.09 min Scan# 2587  
 Delta R.T. 0.00 min  
 Lab File: VN055620.D  
 Acq: 17 May 2019 19:07

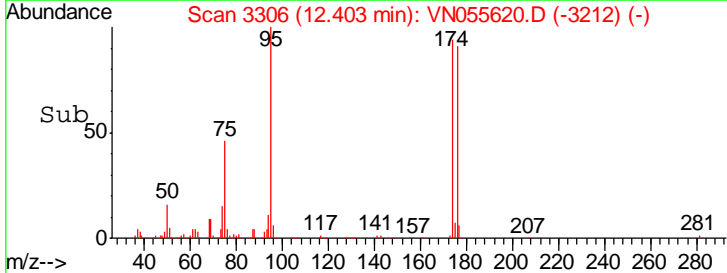
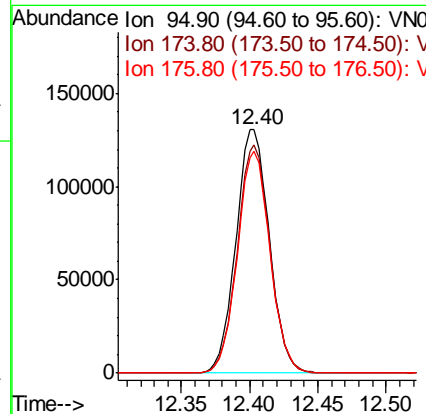
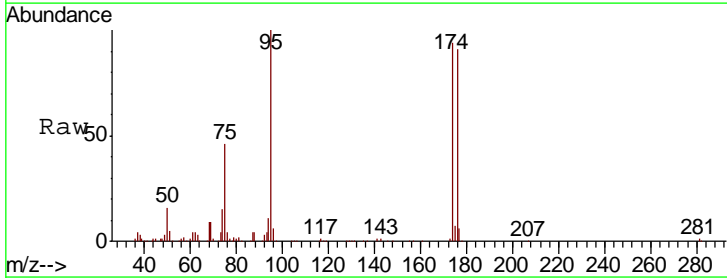
Instrument :  
 MSVOA\_N  
 ClientSampled :

Tgt Ion: 98 Resp: 684723  
 Ion Ratio Lower Upper  
 98 100  
 100 64.9 51.9 77.9

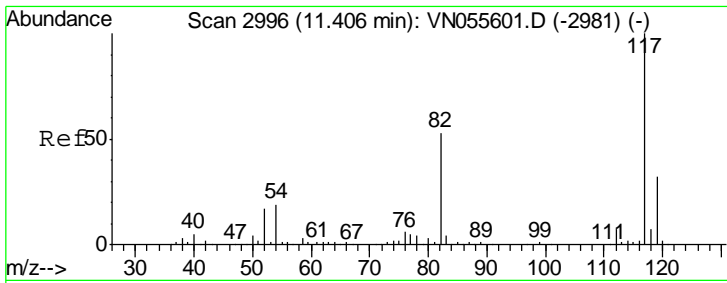


#62  
 4-Bromofluorobenzene  
 Concen: 45.047 ug/l  
 RT: 12.40 min Scan# 3306  
 Delta R.T. 0.00 min  
 Lab File: VN055620.D  
 Acq: 17 May 2019 19:07

Tgt Ion: 95 Resp: 221422  
 Ion Ratio Lower Upper  
 95 100  
 174 91.9 0.0 180.6  
 176 89.2 0.0 177.4



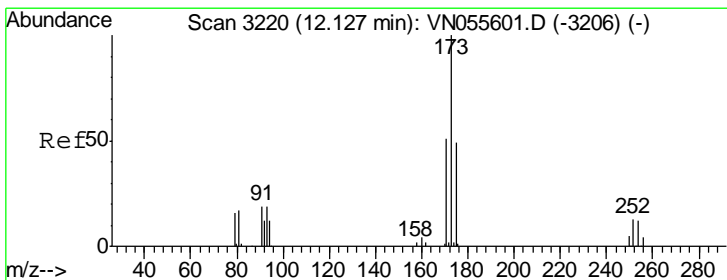
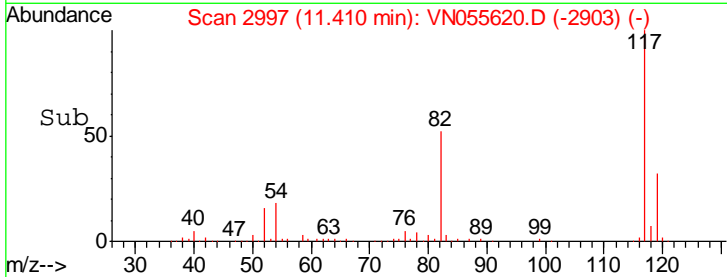
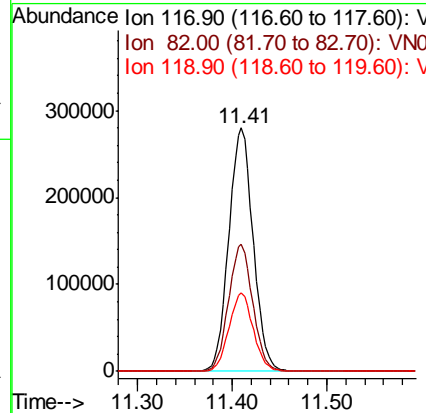
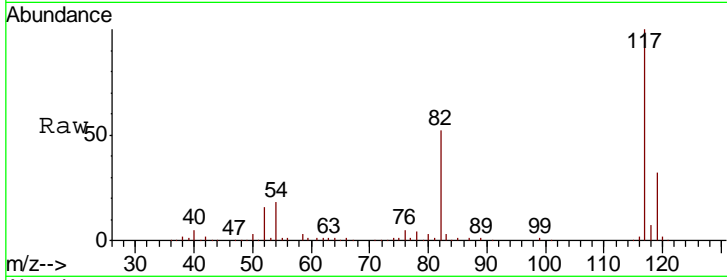




#63  
 Chlorobenzene-d5  
 Concen: 50.000 ug/l  
 RT: 11.41 min Scan# 2997  
 Delta R.T. 0.00 min  
 Lab File: VN055620.D  
 Acq: 17 May 2019 19:07

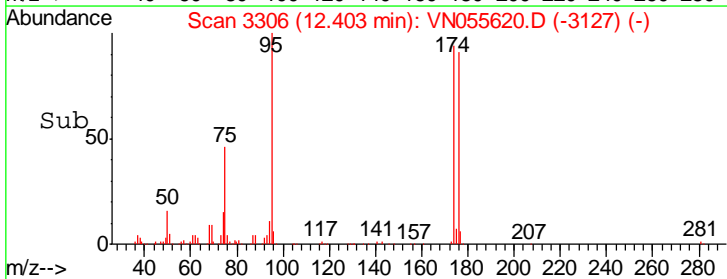
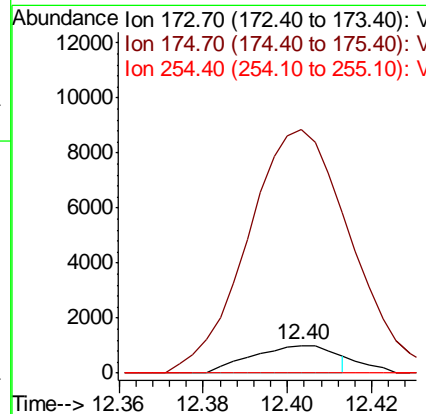
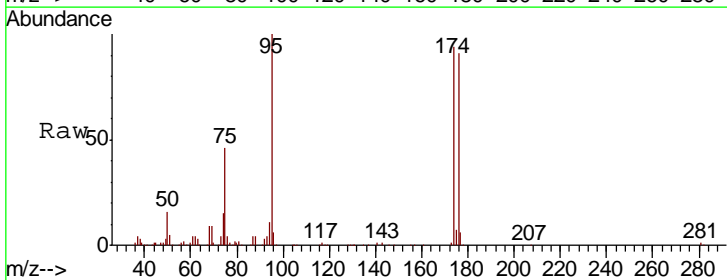
Instrument :  
 MSVOA\_N  
 ClientSampled :

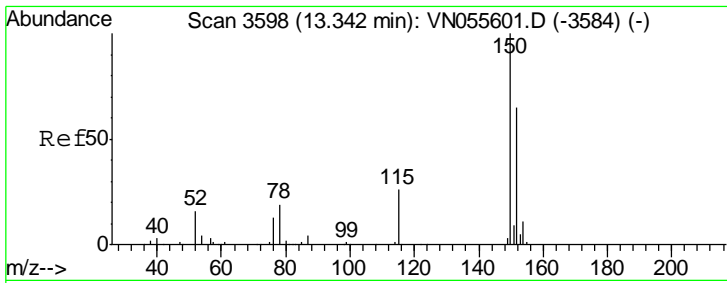
Tgt Ion	Resp	Lower	Upper
117	100		
82	52.0	42.3	63.5
119	32.3	25.4	38.2



#71  
 Bromoform  
 Concen: 0.401 ug/l  
 RT: 12.40 min Scan# 3306  
 Delta R.T. 0.28 min  
 Lab File: VN055620.D  
 Acq: 17 May 2019 19:07

Tgt Ion	Resp	Lower	Upper
173	100		
175	917.6	24.3	72.9#
254	0.0	0.1	0.1#

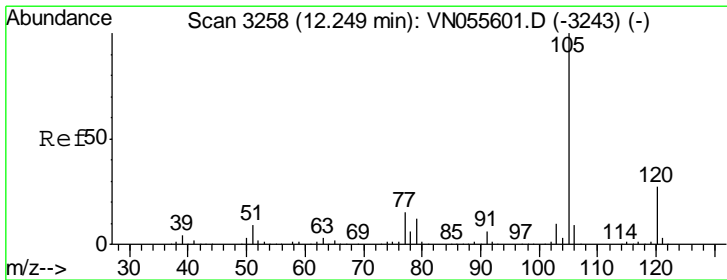
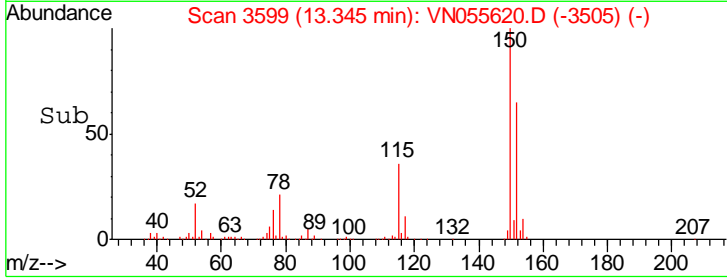
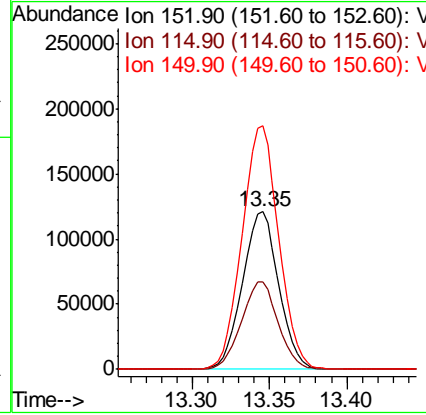
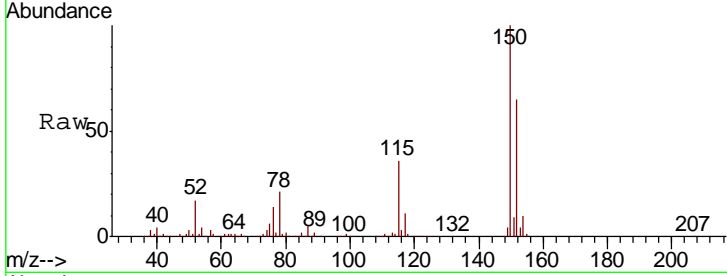




#72  
 1,4-Dichlorobenzene-d4  
 Concen: 50.000 ug/l  
 RT: 13.35 min Scan# 3599  
 Delta R.T. 0.00 min  
 Lab File: VN055620.D  
 Acq: 17 May 2019 19:07

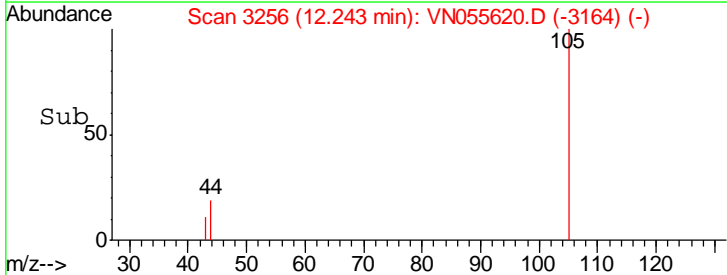
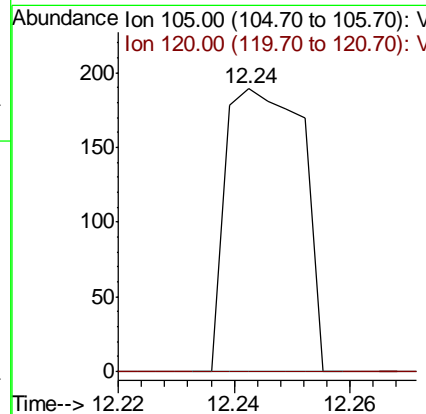
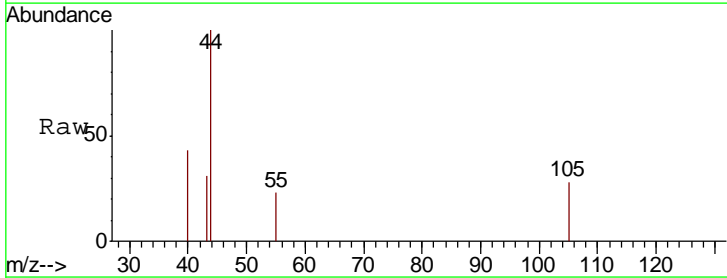
Instrument :  
 MSVOA\_N  
 ClientSampled :

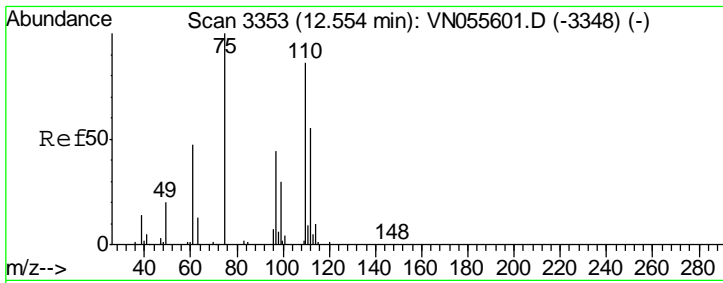
Tgt Ion	Resp	Lower	Upper
152	197399		
115	55.7	28.1	84.2
150	155.9	0.0	348.0



#73  
 Isopropylbenzene  
 Concen: Below Cal  
 RT: 12.24 min Scan# 3256  
 Delta R.T. -0.01 min  
 Lab File: VN055620.D  
 Acq: 17 May 2019 19:07

Tgt Ion	Resp	Lower	Upper
105	173		
105	100		
120	0.0	13.4	40.2#

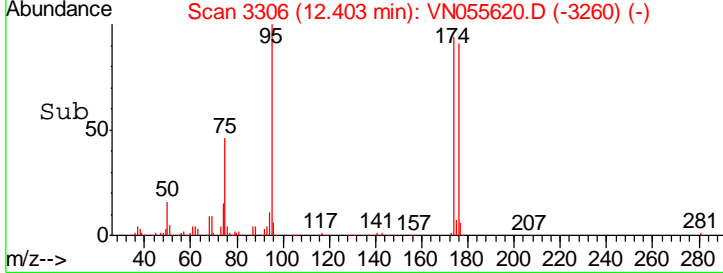
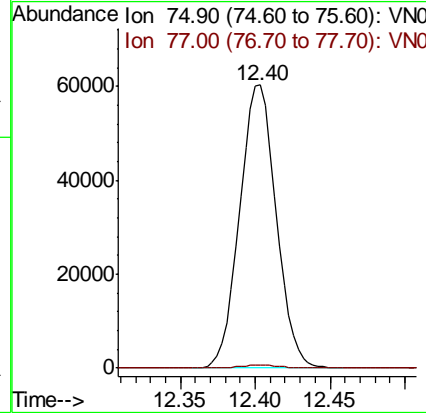
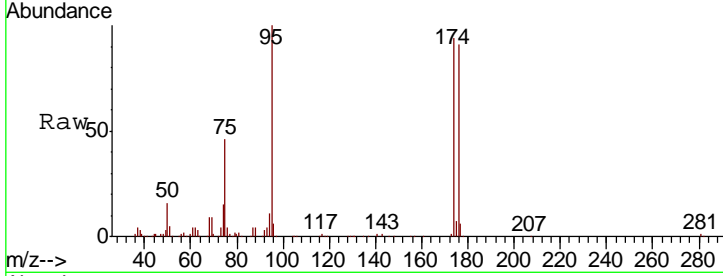




#76  
 1,2,3-Trichloropropane  
 Concen: 25.438 ug/l  
 RT: 12.40 min Scan# 3306  
 Delta R.T. -0.15 min  
 Lab File: VN055620.D  
 Acq: 17 May 2019 19:07

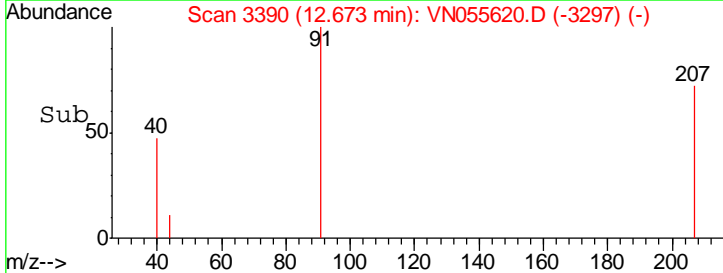
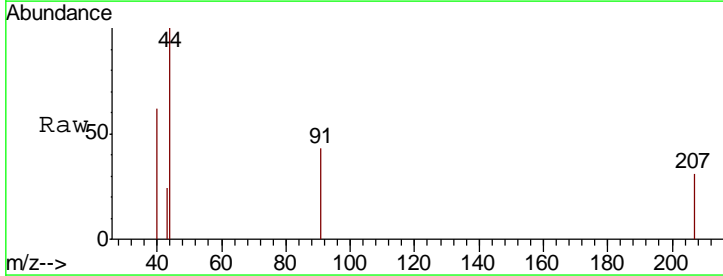
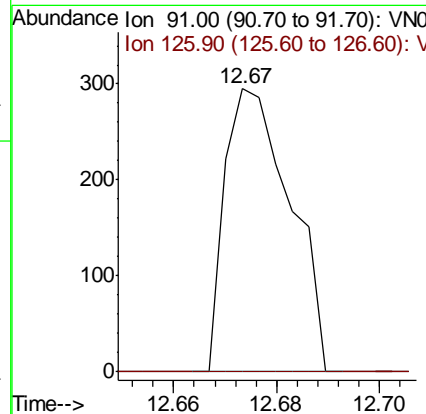
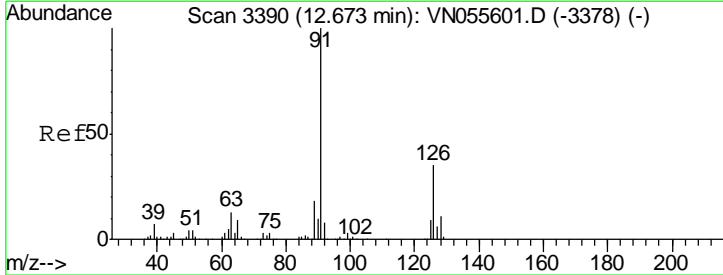
Instrument : MSVOA\_N  
 ClientSampled :

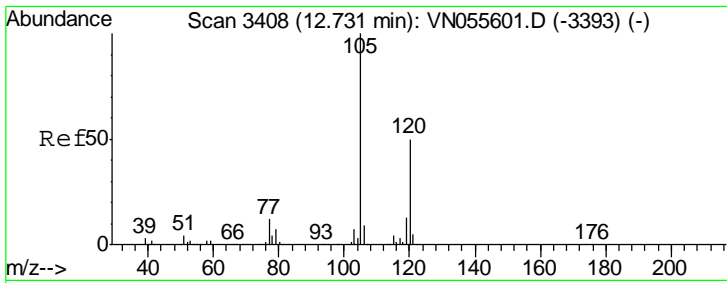
Tgt Ion	Resp	Lower	Upper
75	100		
77	1.1	0.0	0.0#



#79  
 2-Chlorotoluene  
 Concen: Below Cal  
 RT: 12.67 min Scan# 3390  
 Delta R.T. 0.00 min  
 Lab File: VN055620.D  
 Acq: 17 May 2019 19:07

Tgt Ion	Resp	Lower	Upper
91	100		
126	0.0	17.8	53.4#

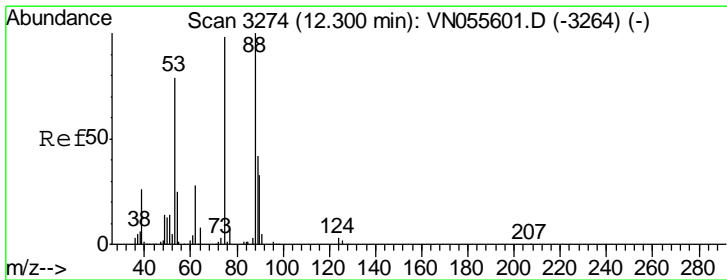
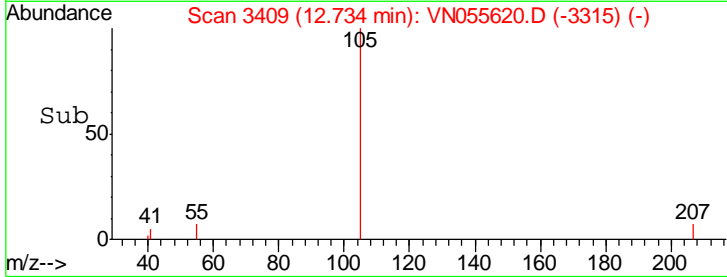
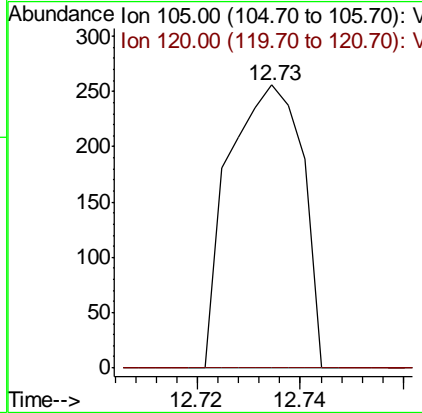
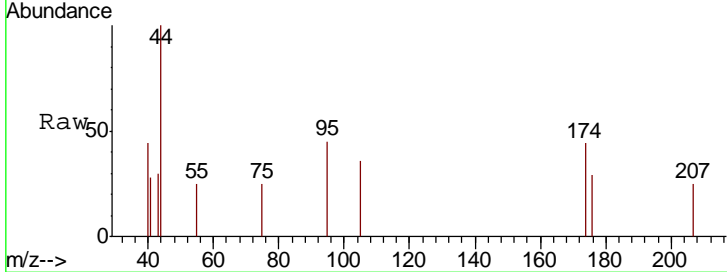




#80  
 1,3,5-Trimethylbenzene  
 Concen: Below Cal  
 RT: 12.73 min Scan# 3409  
 Delta R.T. 0.00 min  
 Lab File: VN055620.D  
 Acq: 17 May 2019 19:07

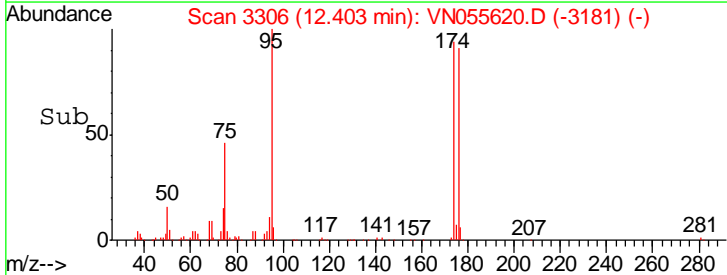
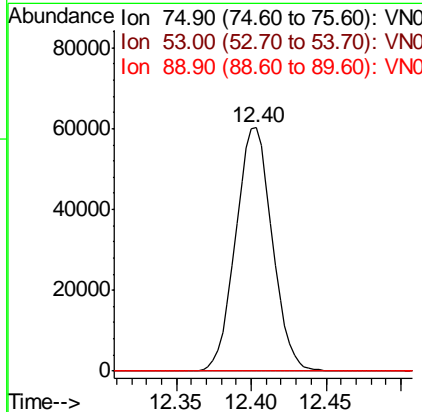
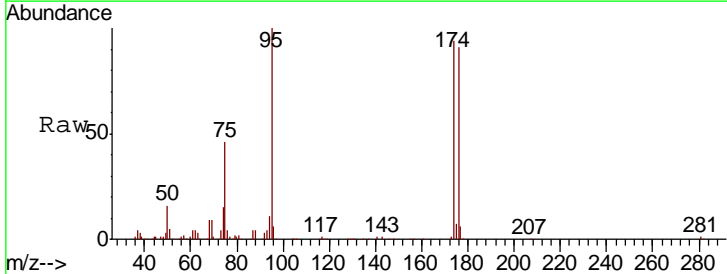
Instrument : MSVOA\_N  
 ClientSampled :

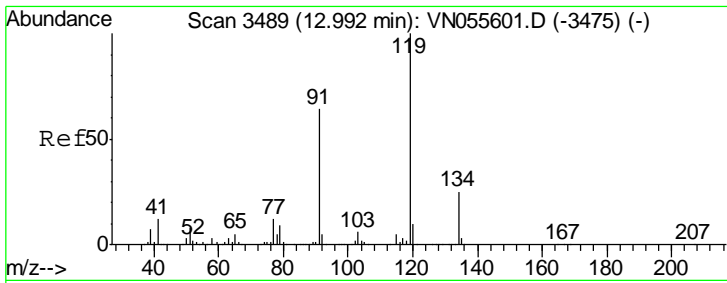
Tgt Ion	Resp	Lower	Upper
105	100		
120	0.0	24.6	74.0#



#81  
 trans-1,4-Dichloro-2-butene  
 Concen: 65.390 ug/l  
 RT: 12.40 min Scan# 3306  
 Delta R.T. 0.10 min  
 Lab File: VN055620.D  
 Acq: 17 May 2019 19:07

Tgt Ion	Resp	Lower	Upper
75	100		
53	0.0	65.1	97.7#
89	0.0	36.4	54.6#

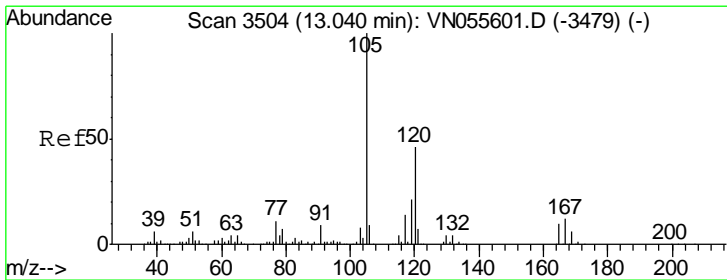
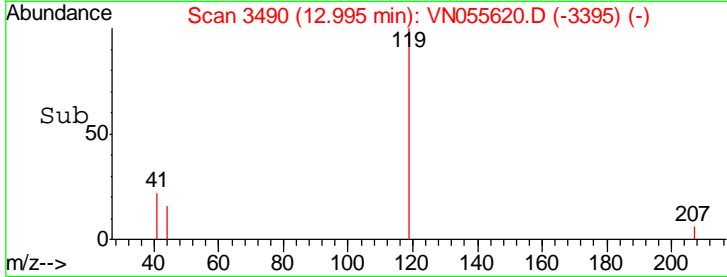
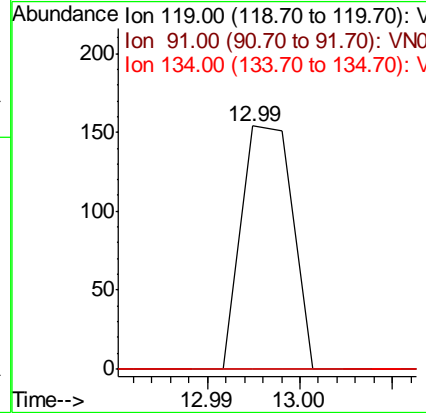
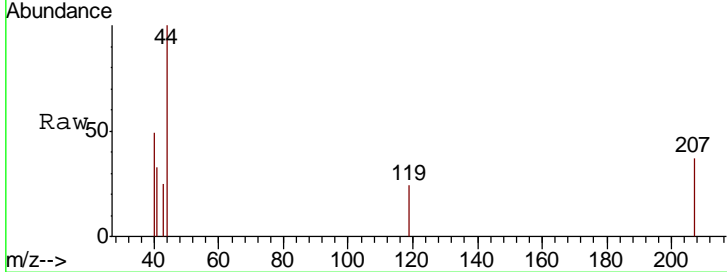




#83  
 tert-Butylbenzene  
 Concen: Below Cal  
 RT: 12.99 min Scan# 3490  
 Delta R.T. 0.00 min  
 Lab File: VN055620.D  
 Acq: 17 May 2019 19:07

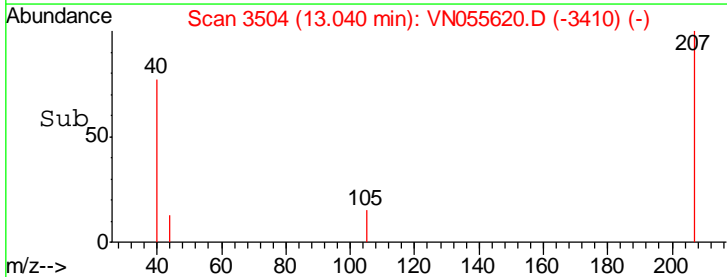
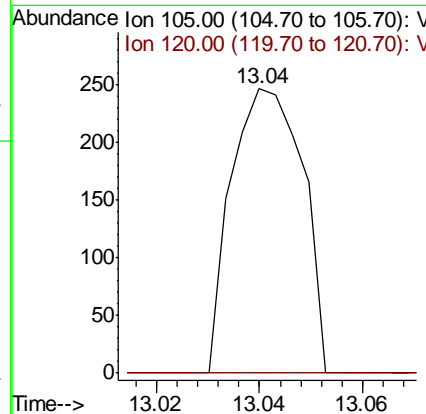
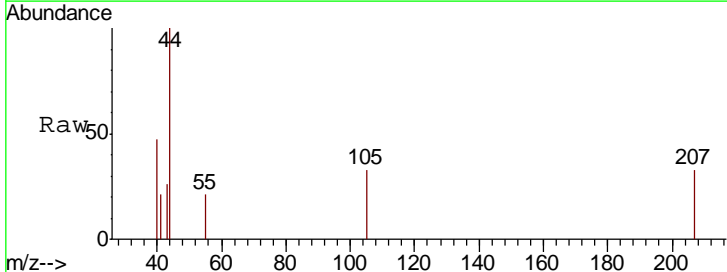
Instrument :  
 MSVOA\_N  
 ClientSampled :

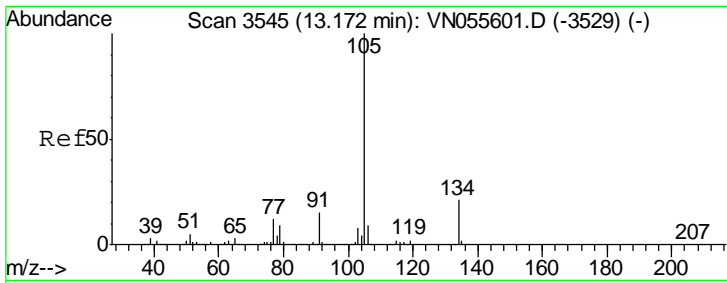
Tgt Ion	Resp	Lower	Upper
119	100		
91	0.0	31.3	93.8#
134	0.0	13.2	39.6#



#84  
 1,2,4-Trimethylbenzene  
 Concen: Below Cal  
 RT: 13.04 min Scan# 3504  
 Delta R.T. 0.00 min  
 Lab File: VN055620.D  
 Acq: 17 May 2019 19:07

Tgt Ion	Resp	Lower	Upper
105	100		
120	0.0	23.1	69.2#

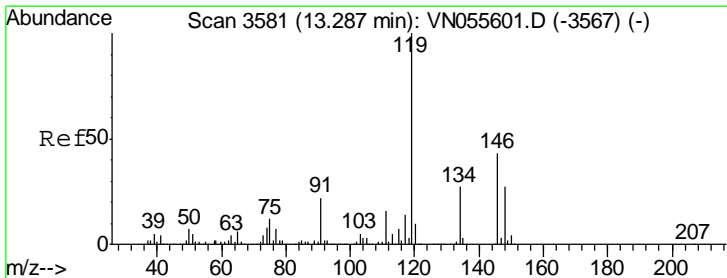
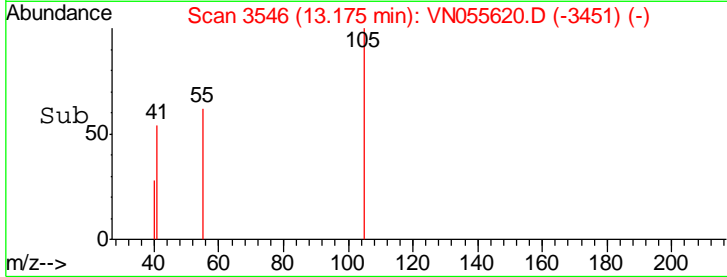
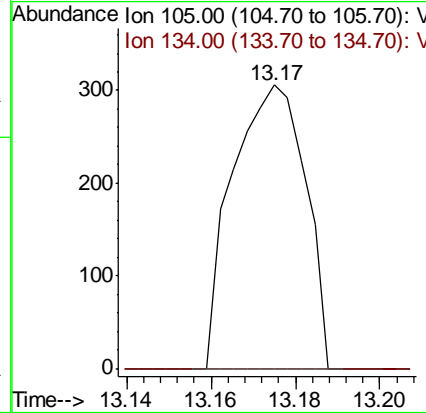
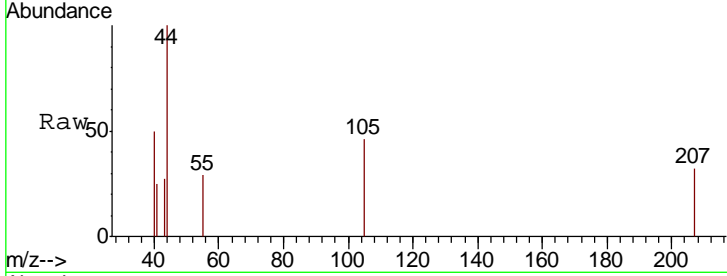




#85  
 sec-Butylbenzene  
 Concen: Below Cal  
 RT: 13.17 min Scan# 3546  
 Delta R.T. 0.00 min  
 Lab File: VN055620.D  
 Acq: 17 May 2019 19:07

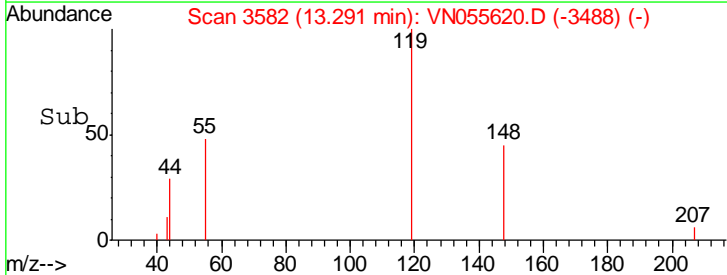
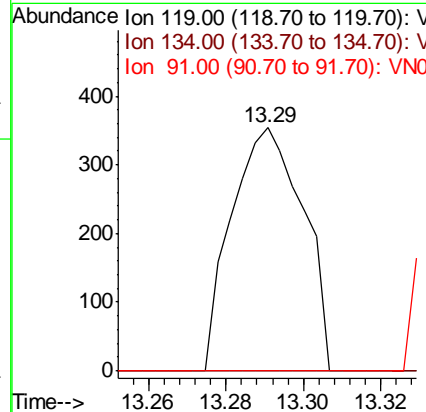
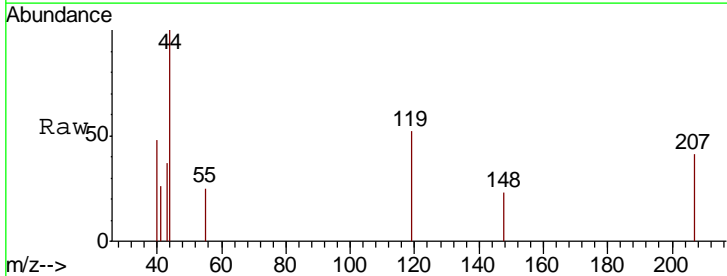
Instrument : MSVOA\_N  
 ClientSampled :

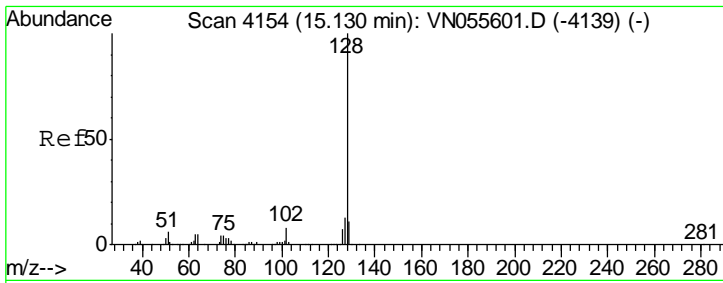
Tgt Ion	Resp	Lower	Upper
105	100		
134	0.0	10.3	30.9#



#86  
 p-Isopropyltoluene  
 Concen: Below Cal  
 RT: 13.29 min Scan# 3582  
 Delta R.T. 0.00 min  
 Lab File: VN055620.D  
 Acq: 17 May 2019 19:07

Tgt Ion	Resp	Lower	Upper
119	100		
134	0.0	13.4	40.2#
91	0.0	11.0	33.0#





#95  
 Naphthalene  
 Concen: 1.810 ug/l  
 RT: 15.14 min Scan# 4157  
 Delta R.T. 0.01 min  
 Lab File: VN055620.D  
 Acq: 17 May 2019 19:07

Instrument :  
 MSVOA\_N  
 ClientSampled :

Tot Ion	Ratio	Lower	Upper
128	100		
127	0.0	10.2	15.4#
129	0.0	8.6	12.8#

