

Data Path : Z:\VOASRV\HPCHEM1\MSVOA N\DATA\VN051719\  
 Data File : VN055640.D  
 Acq On : 18 May 2019 4:09  
 Operator : JC/SP  
 Sample : K2903-02  
 Misc : 5.00mL/MSVOA N/WATER  
 ALS Vial : 48 Sample Multiplier: 1

Instrument :  
 MSVOA\_N  
 ClientSampleId :

Quant Time: May 18 04:32:45 2019  
 Quant Method : Z:\VOASRV\HPCHEM1\MSVOA\_N\METHODS\82N051719W.M  
 Quant Title : SW846 8260  
 QLast Update : Fri May 17 23:54:12 2019  
 Response via : Initial Calibration

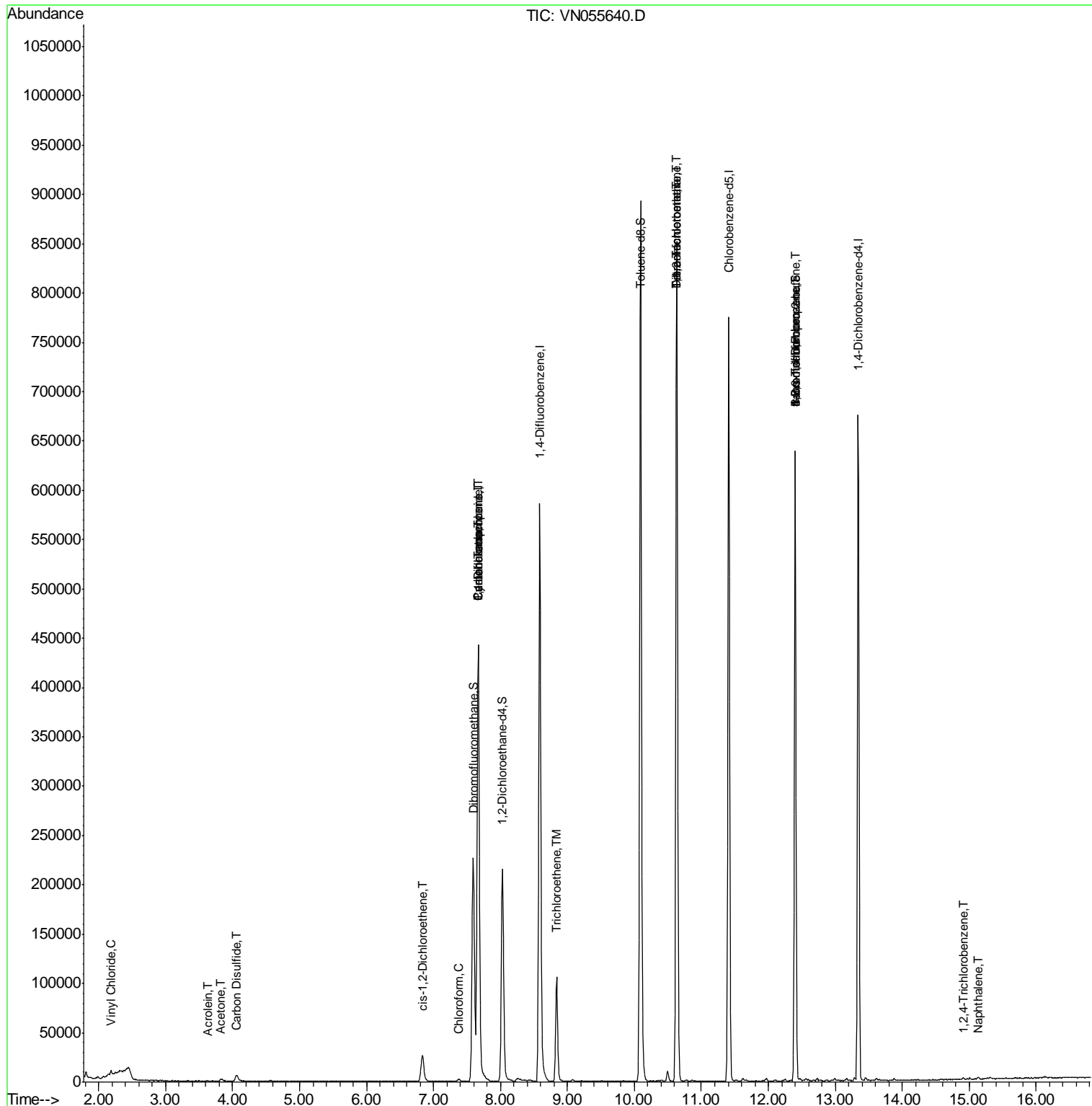
Internal Standards	R.T.	QIon	Response	Conc	Units	Dev(Min)
1) Pentafluorobenzene	7.67	168	419755	50.00	ug/l	0.00
34) 1,4-Difluorobenzene	8.59	114	590965	50.00	ug/l	0.00
63) Chlorobenzene-d5	11.41	117	498533	50.00	ug/l	0.00
72) 1,4-Dichlorobenzene-d4	13.34	152	201602	50.00	ug/l	0.00
System Monitoring Compounds						
33) 1,2-Dichloroethane-d4	8.03	65	189769	41.24	ug/l	0.00
Spiked Amount	50.000		Recovery	=	82.48%	
35) Dibromofluoromethane	7.59	113	179892	47.92	ug/l	0.00
Spiked Amount	50.000		Recovery	=	95.84%	
50) Toluene-d8	10.09	98	680307	47.93	ug/l	0.00
Spiked Amount	50.000		Recovery	=	95.86%	
62) 4-Bromofluorobenzene	12.40	95	220728	45.03	ug/l	0.00
Spiked Amount	50.000		Recovery	=	90.06%	
Target Compounds						
						Qvalue
4) Vinyl Chloride	2.18	62	2709	0.581	ug/l	93
13) Acrolein	3.63	56	65	1.510	ug/l #	1
16) Acetone	3.83	43	4033	2.148	ug/l	95
17) Carbon Disulfide	4.06	76	2301	0.216	ug/l #	75
27) cis-1,2-Dichloroethene	6.84	96	18870	3.968	ug/l	87
30) Chloroform	7.37	83	3141	0.426	ug/l	86
31) Cyclohexane	7.67	56	6285	0.921	ug/l #	1
36) 1,1-Dichloropropene	7.67	75	24528	4.655	ug/l #	49
38) Carbon Tetrachloride	7.67	117	34845	6.189	ug/l #	15
44) Trichloroethene	8.84	130	44162	10.099	ug/l	99
55) 1,1,2-Trichloroethane	10.63	97	1612	0.403	ug/l #	1
60) Dibromochloromethane	10.63	129	194206	42.821	ug/l #	11
64) Tetrachloroethene	10.63	164	224909	57.198	ug/l	99
71) Bromoform	12.40	173	1520	0.442	ug/l #	1
73) Isopropylbenzene	12.25	105	1382	Below Cal		89
75) 1,1,2,2-Tetrachloroethane	12.56	83	106	Below Cal	#	26
76) 1,2,3-Trichloropropane	12.40	75	101481	24.669	ug/l #	100
79) 2-Chlorotoluene	12.77	91	1058	Below Cal		92
80) 1,3,5-Trimethylbenzene	12.74	105	643	Below Cal		83
81) trans-1,4-Dichloro-2-buten	12.40	75	101481	63.413	ug/l #	17
83) tert-Butylbenzene	12.99	119	1513	Below Cal		92
84) 1,2,4-Trimethylbenzene	13.04	105	747	Below Cal		92
85) sec-Butylbenzene	13.17	105	1781	Below Cal		99
86) p-Isopropyltoluene	13.29	119	1182	Below Cal		90
90) Hexachloroethane	13.95	117	175	Below Cal	#	3
93) 1,2,4-Trichlorobenzene	14.91	180	767	0.221	ug/l #	83
94) Hexachlorobutadiene	15.01	225	403	Below Cal	#	65
95) Naphthalene	15.13	128	2378	1.983	ug/l #	78

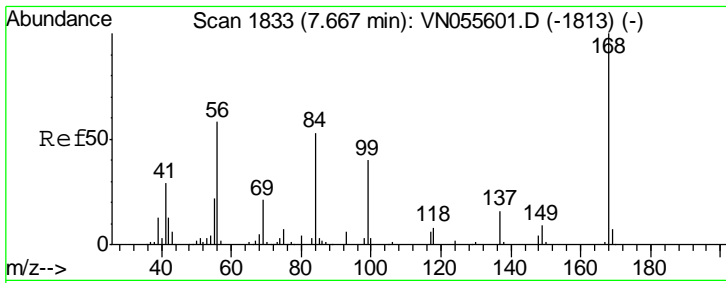
(#) = qualifier out of range (m) = manual integration (+) = signals summed

Data Path : Z:\VOASRV\HPCHEM1\MSVOA N\DATA\VN051719\  
 Data File : VN055640.D  
 Acq On : 18 May 2019 4:09  
 Operator : JC/SP  
 Sample : K2903-02  
 Misc : 5.00mL/MSVOA N/WATER  
 ALS Vial : 48 Sample Multiplier: 1

Instrument :  
 MSVOA\_N  
 Client Sampled :

Quant Time: May 18 04:32:45 2019  
 Quant Method : Z:\VOASRV\HPCHEM1\MSVOA\_N\METHODS\82N051719W.M  
 Quant Title : SW846 8260  
 QLast Update : Fri May 17 23:54:12 2019  
 Response via : Initial Calibration

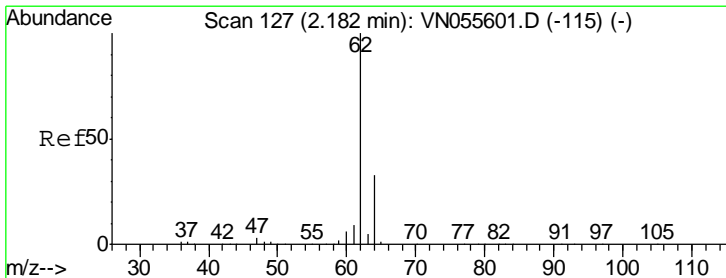
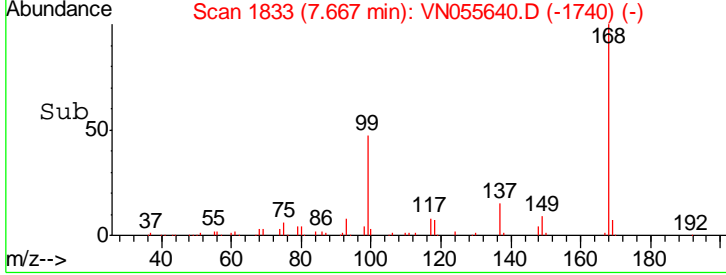
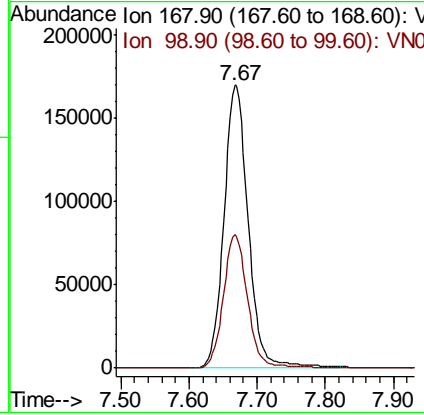
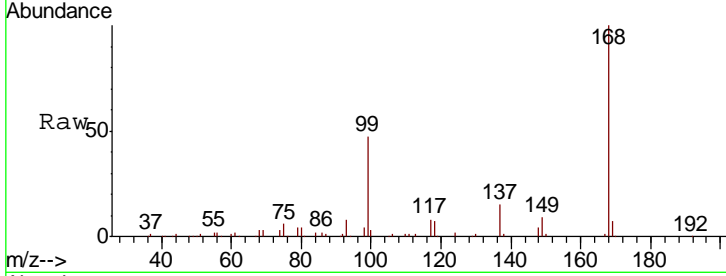




#1  
 Pentafluorobenzene  
 Concen: 50.000 ug/l  
 RT: 7.67 min Scan# 1833  
 Delta R.T. -0.00 min  
 Lab File: VN055640.D  
 Acq: 18 May 2019 4:09

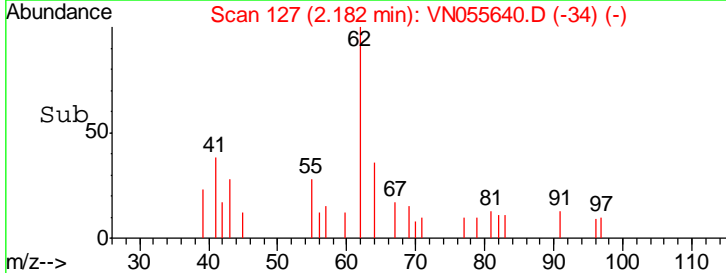
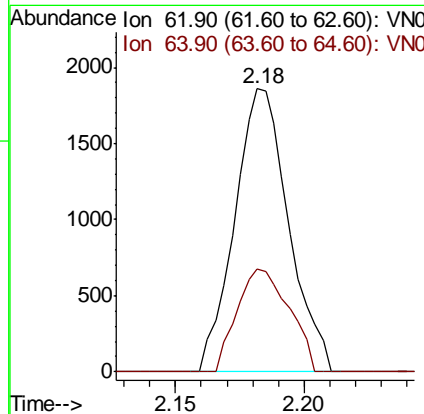
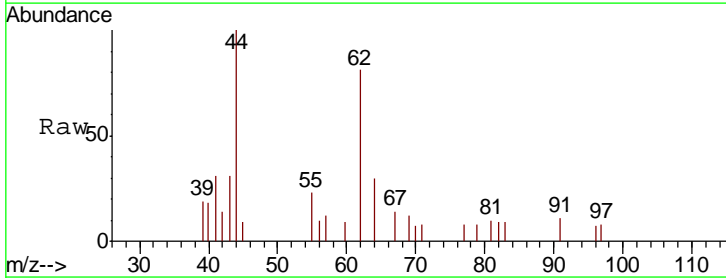
Instrument :  
 MSVOA\_N  
 ClientSampled :

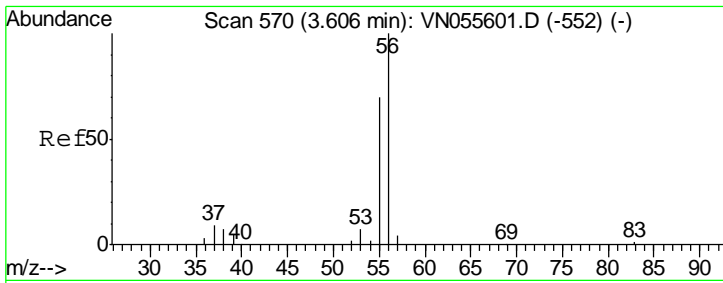
Tgt Ion: 168 Resp: 419755  
 Ion Ratio Lower Upper  
 168 100  
 99 47.4 40.2 60.2



#4  
 Vinyl Chloride  
 Concen: 0.581 ug/l  
 RT: 2.18 min Scan# 127  
 Delta R.T. -0.00 min  
 Lab File: VN055640.D  
 Acq: 18 May 2019 4:09

Tgt Ion: 62 Resp: 2709  
 Ion Ratio Lower Upper  
 62 100  
 64 36.5 26.2 39.4

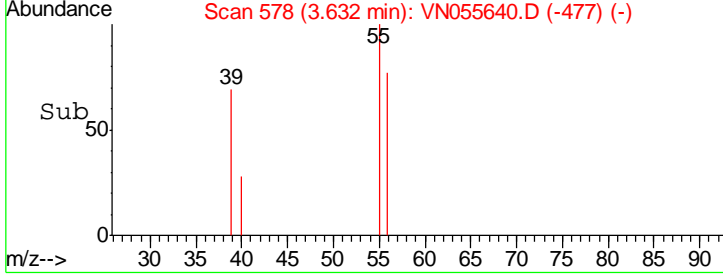
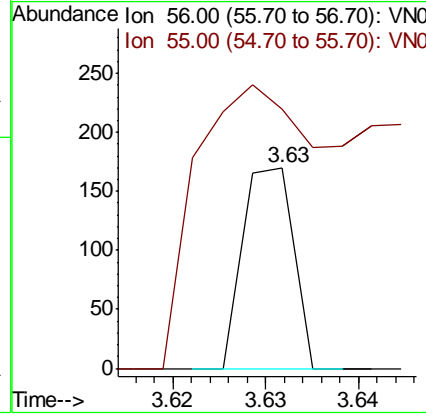
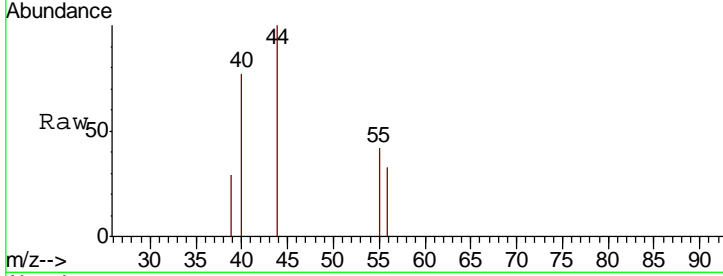




#13  
 Acrolein  
 Concen: 1.510 ug/l  
 RT: 3.63 min Scan# 578  
 Delta R.T. 0.03 min  
 Lab File: VN055640.D  
 Acq: 18 May 2019 4:09

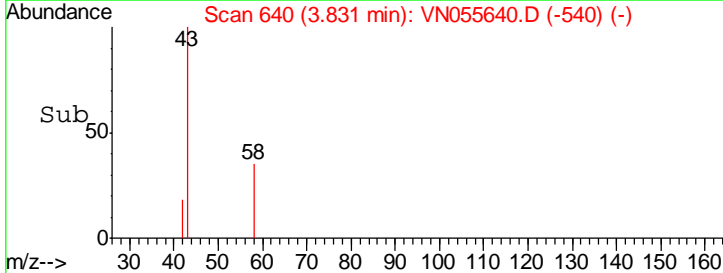
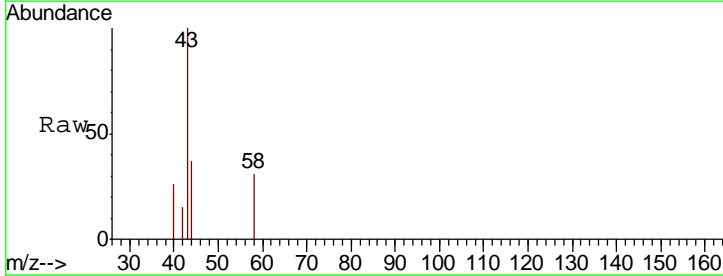
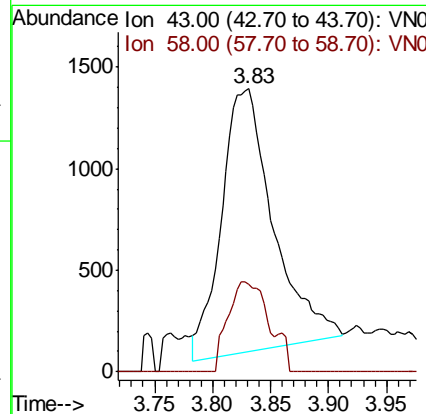
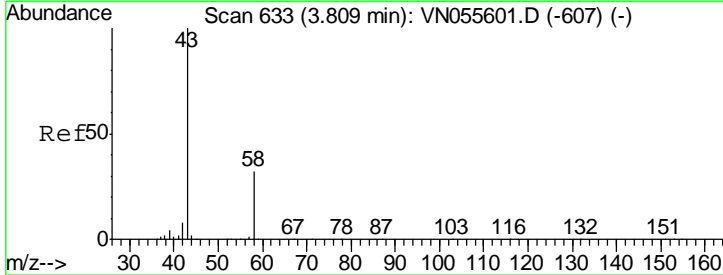
Instrument :  
 MSVOA\_N  
 ClientSampled :

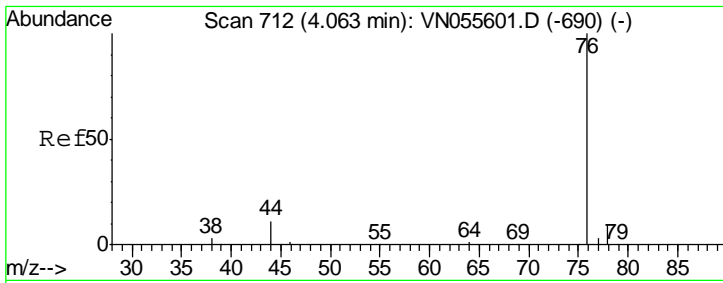
Tgt Ion	Resp	Lower	Upper
56	100		
55	364.6	56.5	84.7#



#16  
 Acetone  
 Concen: 2.148 ug/l  
 RT: 3.83 min Scan# 640  
 Delta R.T. 0.02 min  
 Lab File: VN055640.D  
 Acq: 18 May 2019 4:09

Tgt Ion	Resp	Lower	Upper
43	100		
58	35.4	26.0	39.0

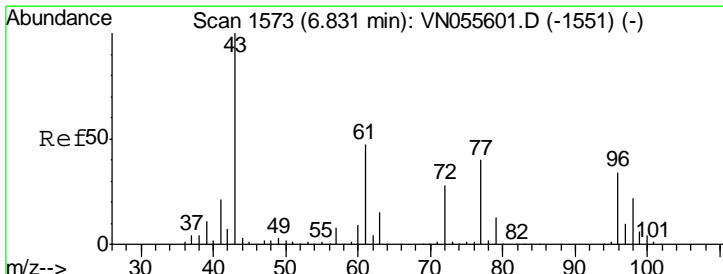
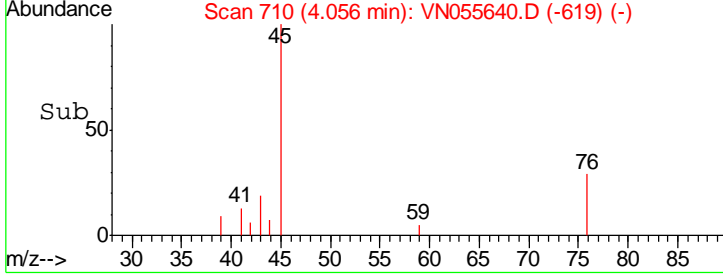
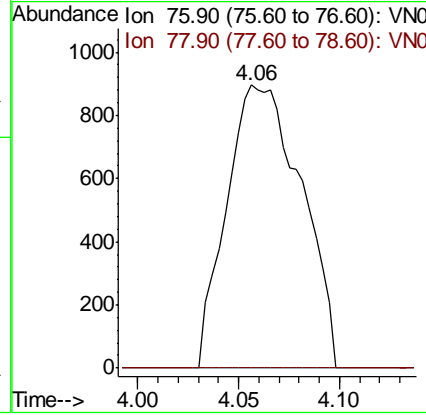
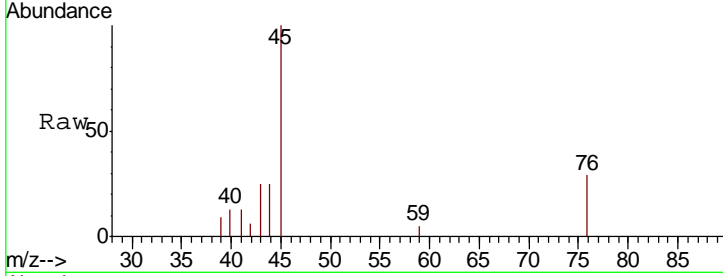




#17  
 Carbon Disulfide  
 Concen: 0.216 ug/l  
 RT: 4.06 min Scan# 710  
 Delta R.T. -0.01 min  
 Lab File: VN055640.D  
 Acq: 18 May 2019 4:09

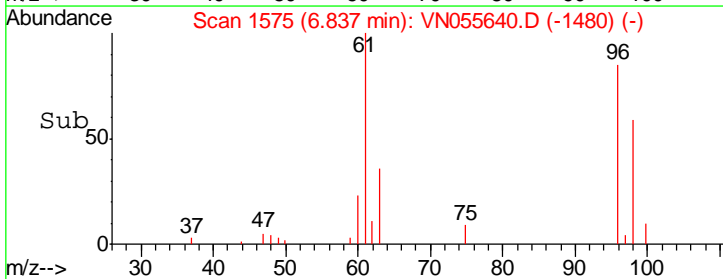
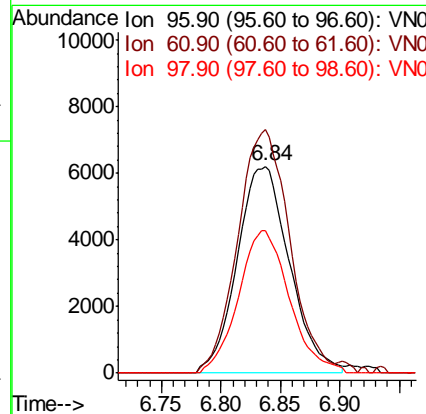
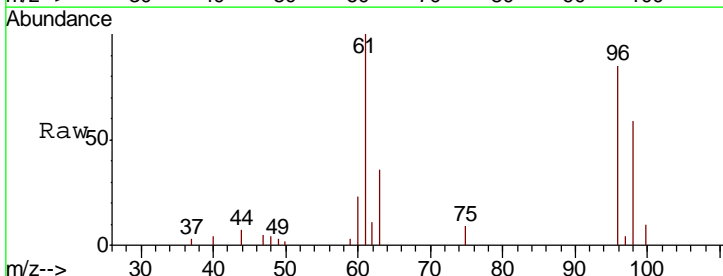
Instrument :  
 MSVOA\_N  
 ClientSampled :

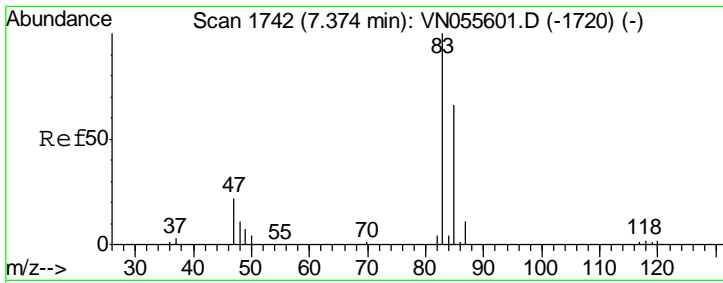
Tgt Ion	Resp	Lower	Upper
76	100		
78	0.0	7.3	10.9#



#27  
 cis-1,2-Dichloroethene  
 Concen: 3.968 ug/l  
 RT: 6.84 min Scan# 1575  
 Delta R.T. 0.01 min  
 Lab File: VN055640.D  
 Acq: 18 May 2019 4:09

Tgt Ion	Resp	Lower	Upper
96	100		
61	116.9	0.0	279.0
98	67.3	0.0	131.6

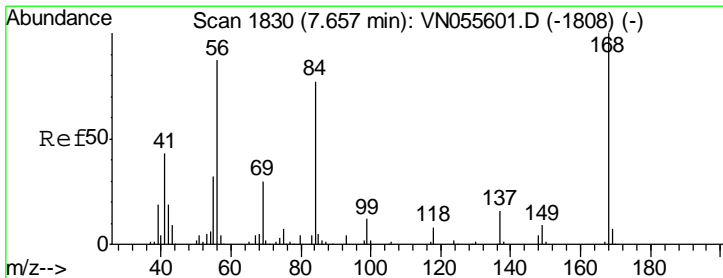
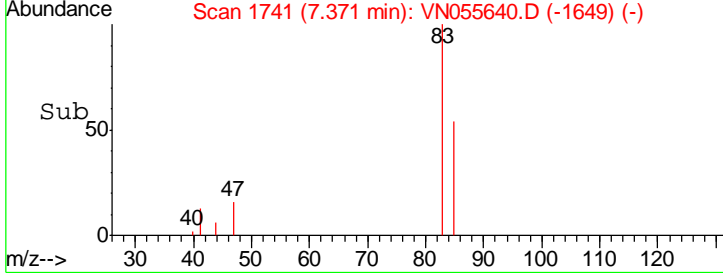
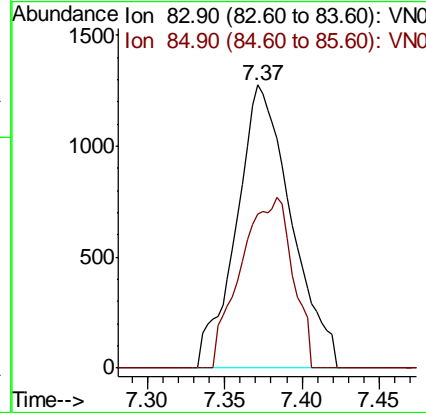
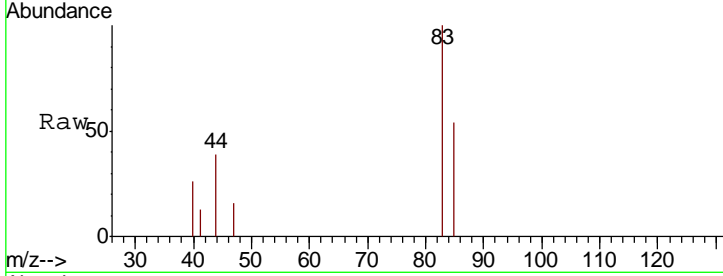




#30  
 Chloroform  
 Concen: 0.426 ug/l  
 RT: 7.37 min Scan# 1741  
 Delta R.T. -0.00 min  
 Lab File: VN055640.D  
 Acq: 18 May 2019 4:09

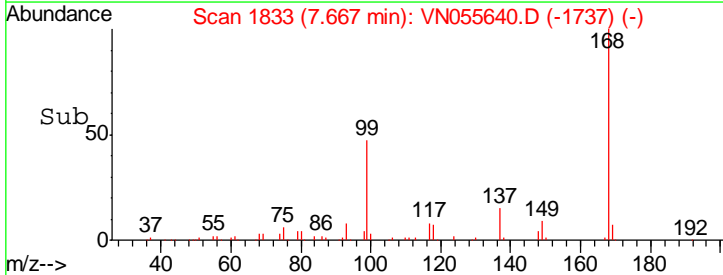
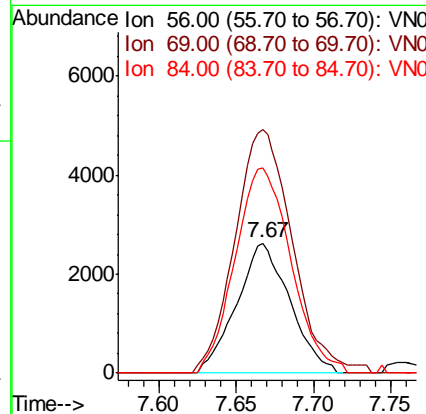
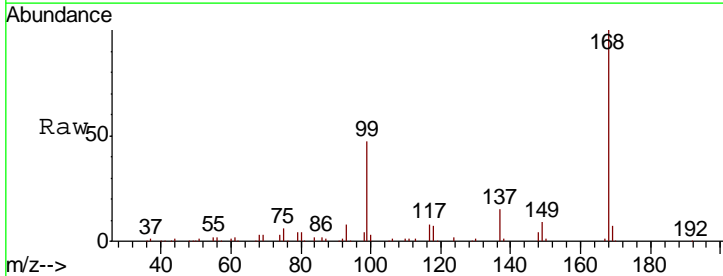
Instrument :  
 MSVOA\_N  
 ClientSampled :

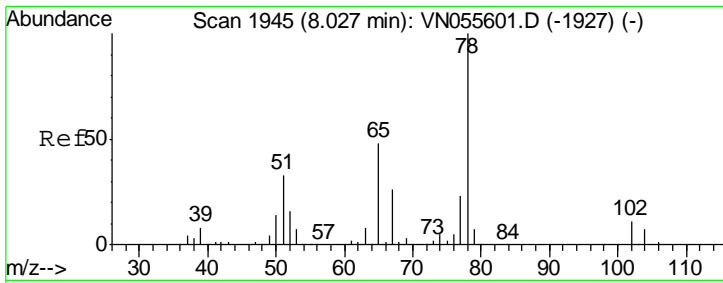
Tgt Ion	Resp	Lower	Upper
83	100		
85	54.3	52.6	78.8



#31  
 Cyclohexane  
 Concen: 0.921 ug/l  
 RT: 7.67 min Scan# 1833  
 Delta R.T. 0.01 min  
 Lab File: VN055640.D  
 Acq: 18 May 2019 4:09

Tgt Ion	Resp	Lower	Upper
56	100		
69	187.3	27.2	40.8#
84	157.4	71.3	106.9#

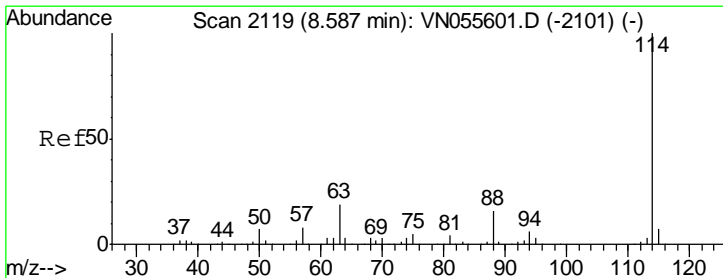
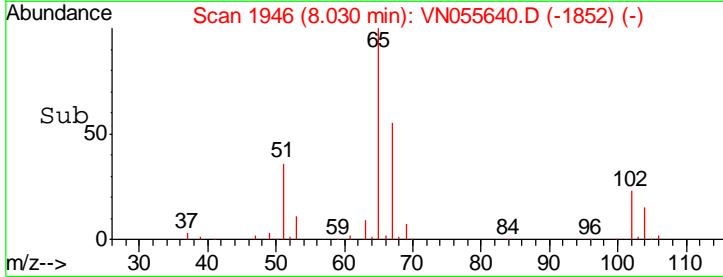
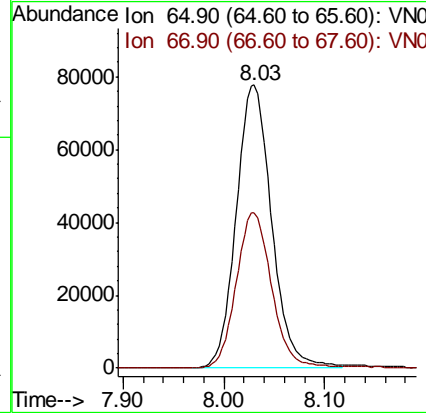
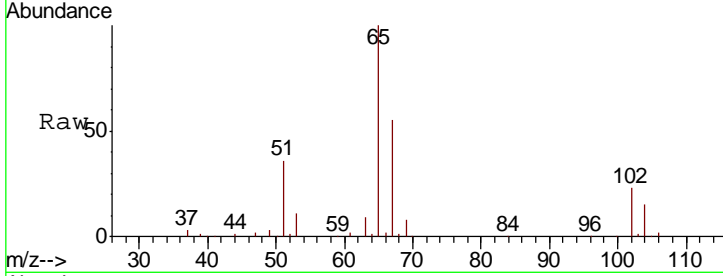




#33  
 1,2-Dichloroethane-d4  
 Concen: 41.242 ug/l  
 RT: 8.03 min Scan# 1946  
 Delta R.T. 0.00 min  
 Lab File: VN055640.D  
 Acq: 18 May 2019 4:09

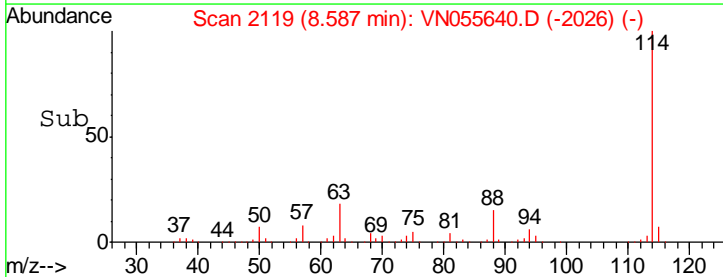
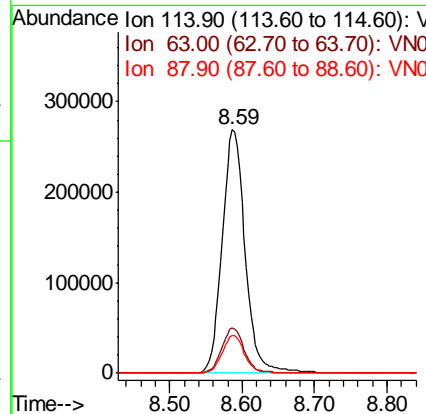
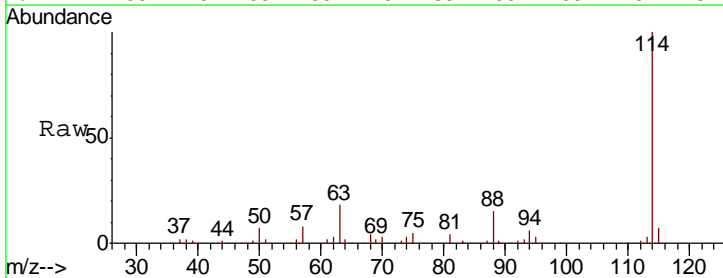
Instrument :  
 MSVOA\_N  
 ClientSampled :

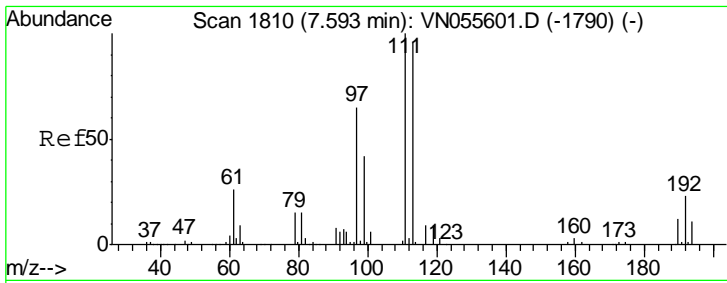
Tgt Ion	Resp	Lower	Upper
65	100		
67	55.1	0.0	108.6



#34  
 1,4-Difluorobenzene  
 Concen: 50.000 ug/l  
 RT: 8.59 min Scan# 2119  
 Delta R.T. -0.00 min  
 Lab File: VN055640.D  
 Acq: 18 May 2019 4:09

Tgt Ion	Resp	Lower	Upper
114	100		
63	18.5	0.0	38.2
88	15.3	0.0	31.0

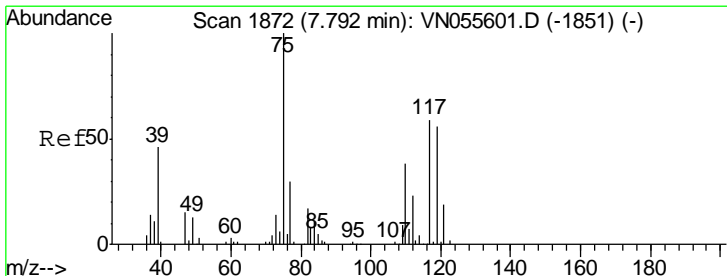
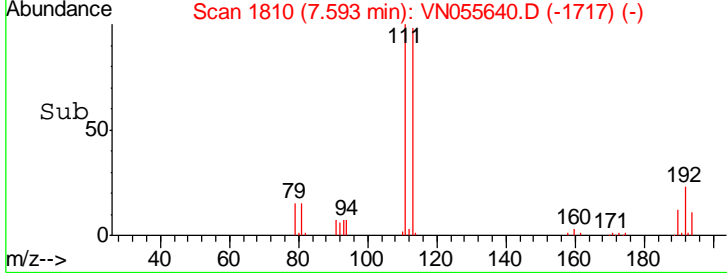
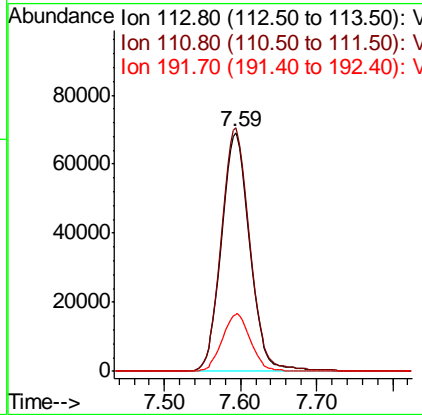
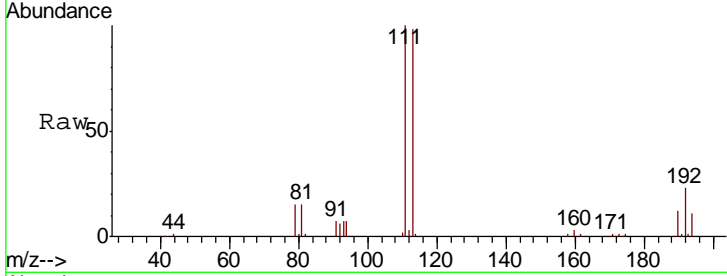




#35  
 Dibromofluoromethane  
 Concen: 47.919 ug/l  
 RT: 7.59 min Scan# 1810  
 Delta R.T. -0.00 min  
 Lab File: VN055640.D  
 Acq: 18 May 2019 4:09

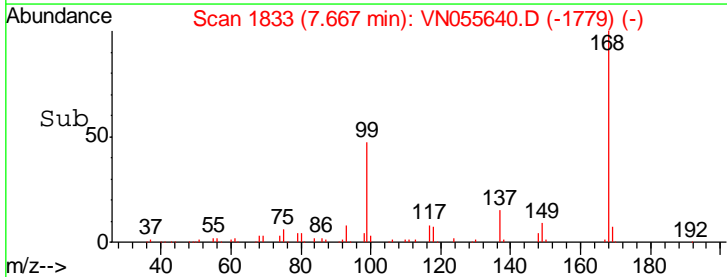
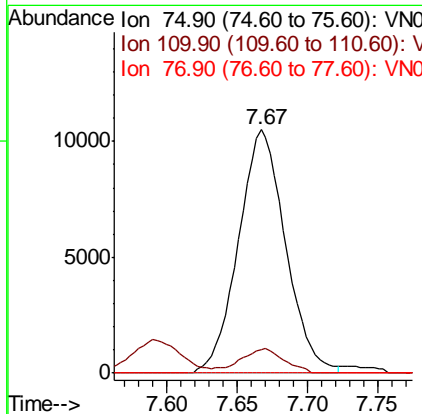
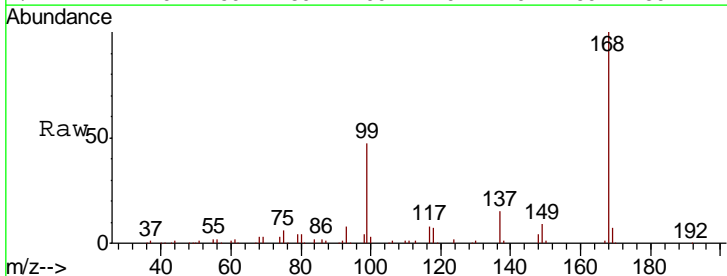
Instrument :  
 MSVOA\_N  
 ClientSampled :

Tgt Ion	Resp	Lower	Upper
113	179892		
111	102.8	82.5	123.7
192	23.9	18.7	28.1

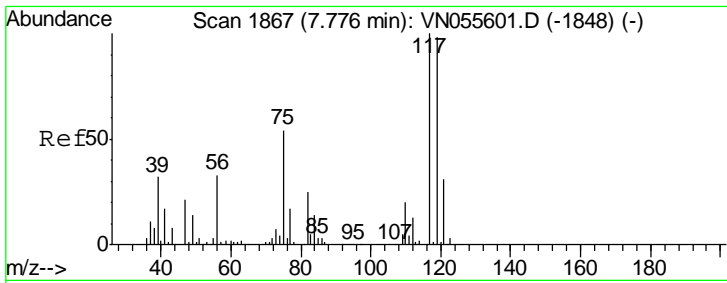


#36  
 1,1-Dichloropropene  
 Concen: 4.655 ug/l  
 RT: 7.67 min Scan# 1833  
 Delta R.T. -0.13 min  
 Lab File: VN055640.D  
 Acq: 18 May 2019 4:09

Tgt Ion	Resp	Lower	Upper
75	24528		
75	100		
110	9.0	18.6	55.6#
77	0.0	24.9	37.3#



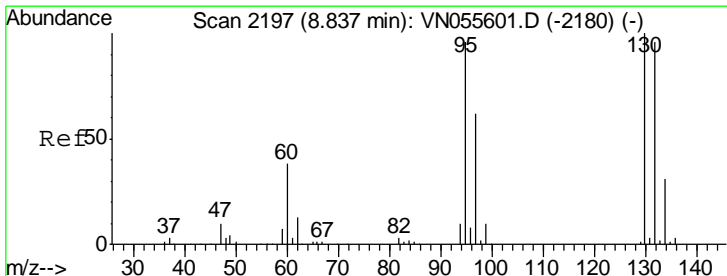
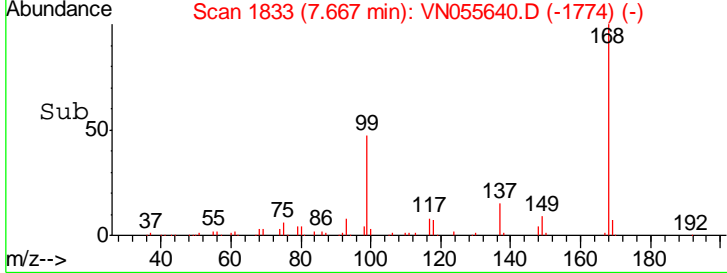
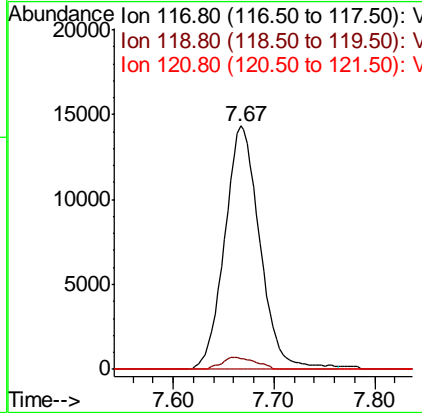
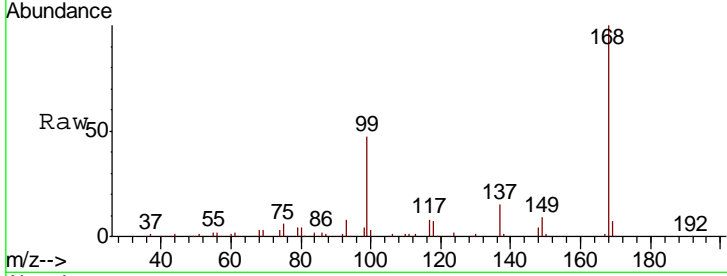




#38  
 Carbon Tetrachloride  
 Concen: 6.189 ug/l  
 RT: 7.67 min Scan# 1833  
 Delta R.T. -0.11 min  
 Lab File: VN055640.D  
 Acq: 18 May 2019 4:09

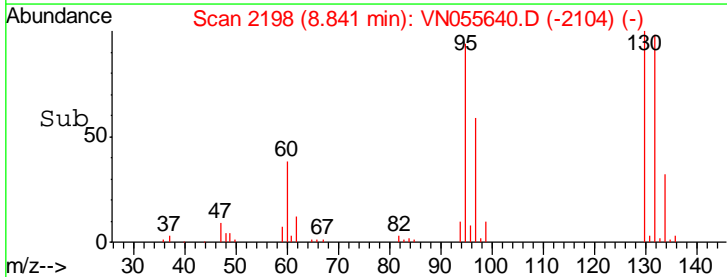
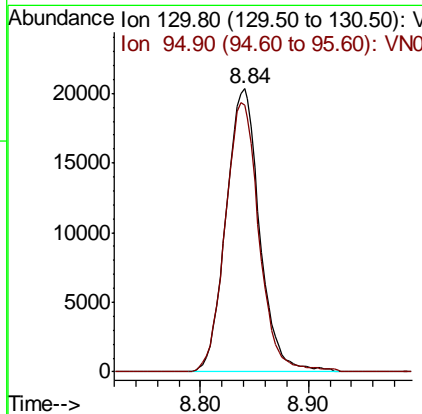
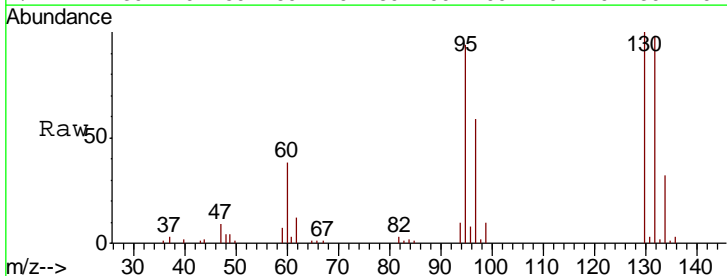
Instrument :  
 MSVOA\_N  
 ClientSampled :

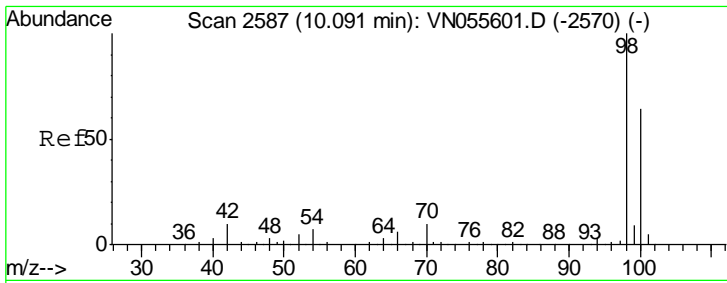
Tgt Ion	Resp	Lower	Upper
117	100		
119	4.6	77.8	116.8#
121	0.0	24.6	37.0#



#44  
 Trichloroethene  
 Concen: 10.099 ug/l  
 RT: 8.84 min Scan# 2198  
 Delta R.T. 0.00 min  
 Lab File: VN055640.D  
 Acq: 18 May 2019 4:09

Tgt Ion	Resp	Lower	Upper
130	100		
95	94.4	0.0	191.0

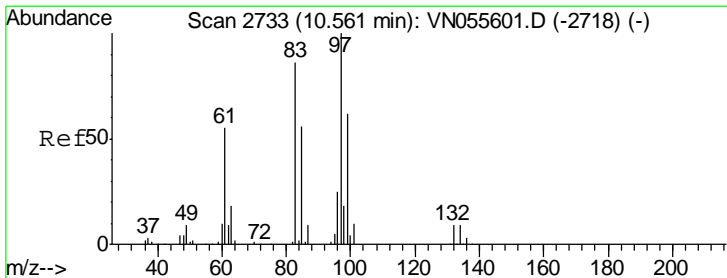
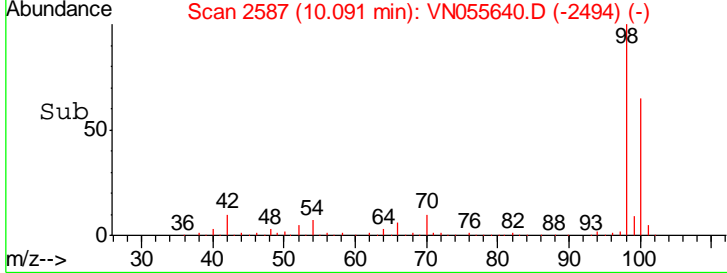
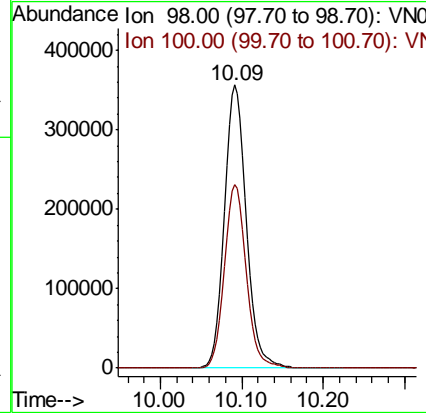
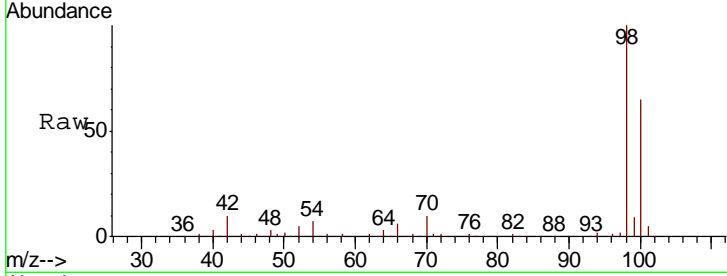




#50  
 Toluene-d8  
 Concen: 47.927 ug/l  
 RT: 10.09 min Scan# 2587  
 Delta R.T. -0.00 min  
 Lab File: VN055640.D  
 Acq: 18 May 2019 4:09

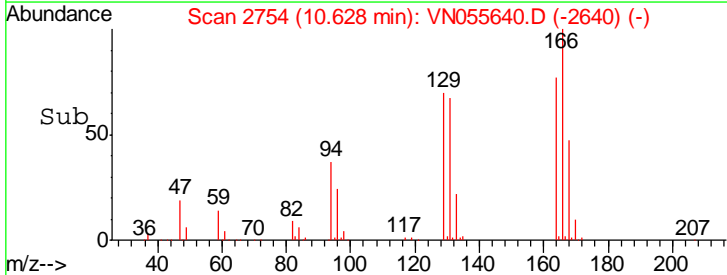
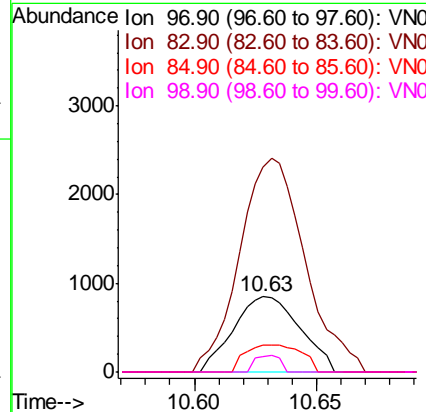
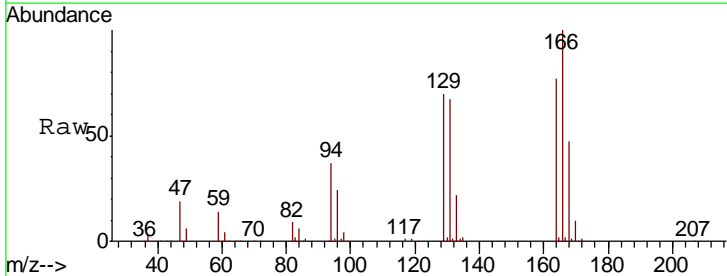
Instrument : MSVOA\_N  
 ClientSampled :

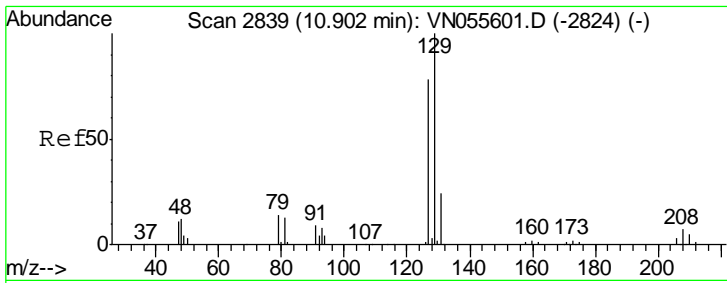
Tgt Ion	Resp	Lower	Upper
98	680307		
98	100		
100	64.8	51.9	77.9



#55  
 1,1,2-Trichloroethane  
 Concen: 0.403 ug/l  
 RT: 10.63 min Scan# 2754  
 Delta R.T. 0.07 min  
 Lab File: VN055640.D  
 Acq: 18 May 2019 4:09

Tgt Ion	Resp	Lower	Upper
97	1612		
97	100		
83	272.7	68.4	102.6#
85	35.5	44.8	67.2#
99	21.4	49.9	74.9#

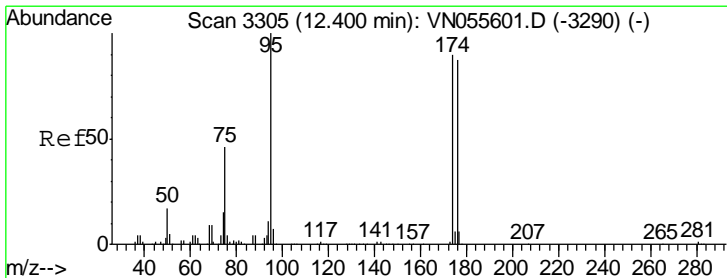
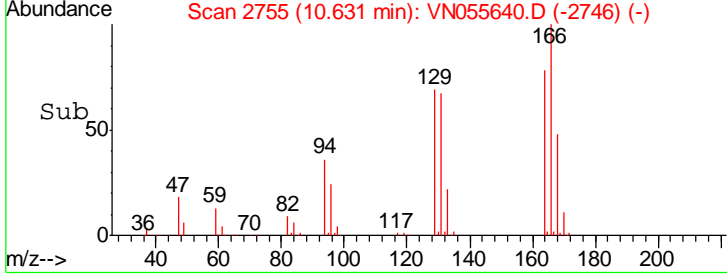
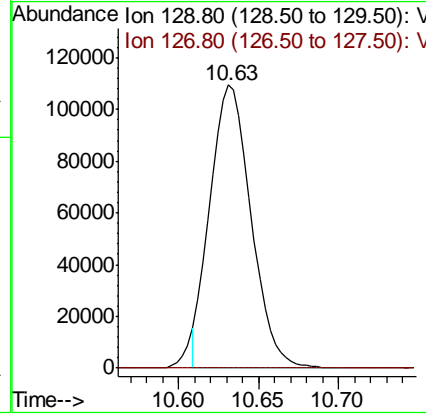
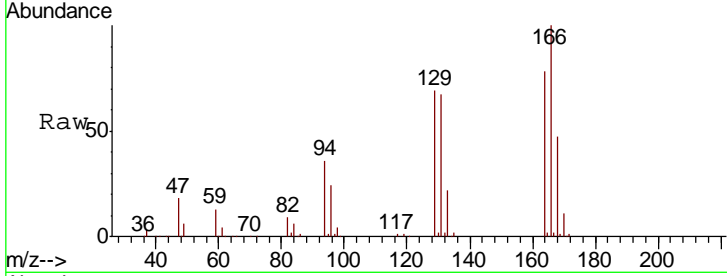




#60  
 Dibromochloromethane  
 Concen: 42.821 ug/l  
 RT: 10.63 min Scan# 2755  
 Delta R.T. -0.27 min  
 Lab File: VN055640.D  
 Acq: 18 May 2019 4:09

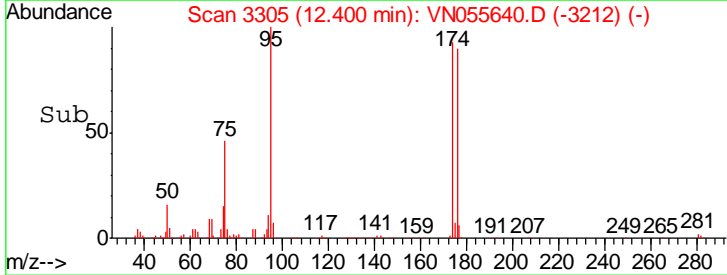
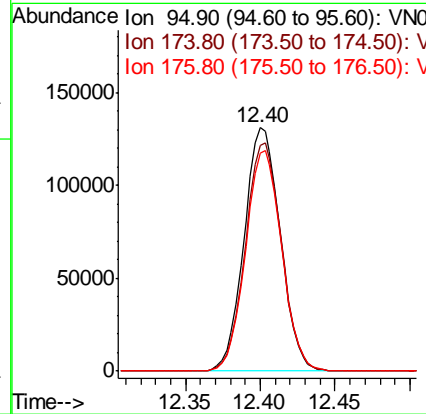
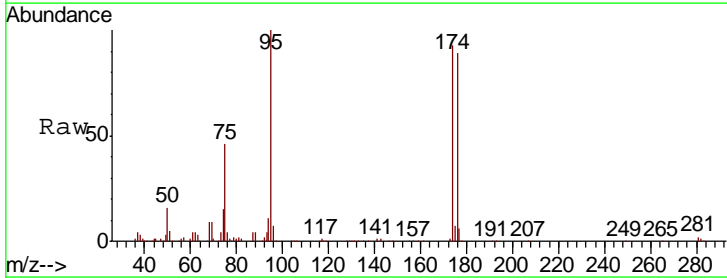
Instrument :  
 MSVOA\_N  
 ClientSampled :

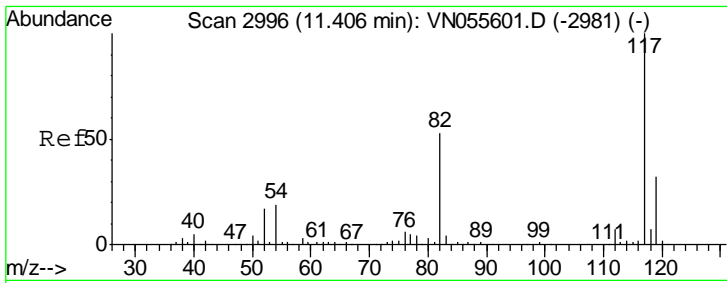
Tgt Ion	Resp	Lower	Upper
129	194206		
127	0.0	38.6	115.8#



#62  
 4-Bromofluorobenzene  
 Concen: 45.032 ug/l  
 RT: 12.40 min Scan# 3305  
 Delta R.T. -0.00 min  
 Lab File: VN055640.D  
 Acq: 18 May 2019 4:09

Tgt Ion	Resp	Lower	Upper
95	220728		
174	93.8	0.0	180.6
176	90.5	0.0	177.4

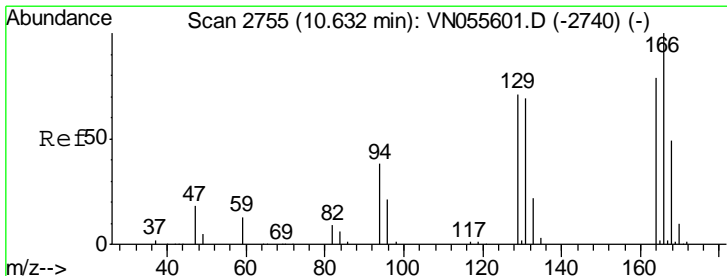
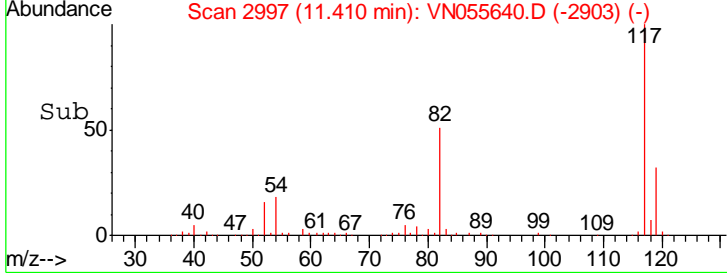
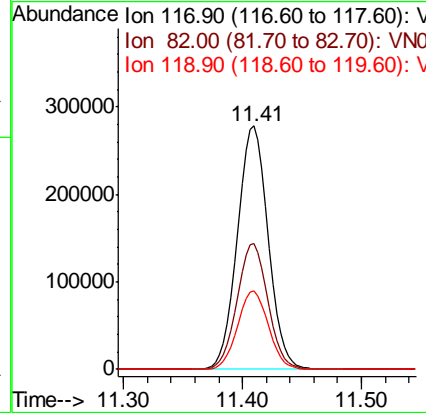
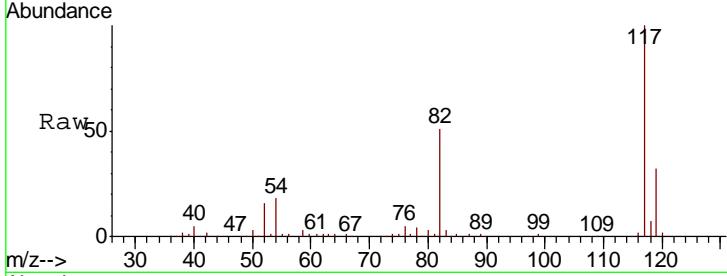




#63  
 Chlorobenzene-d5  
 Concen: 50.000 ug/l  
 RT: 11.41 min Scan# 2997  
 Delta R.T. 0.00 min  
 Lab File: VN055640.D  
 Acq: 18 May 2019 4:09

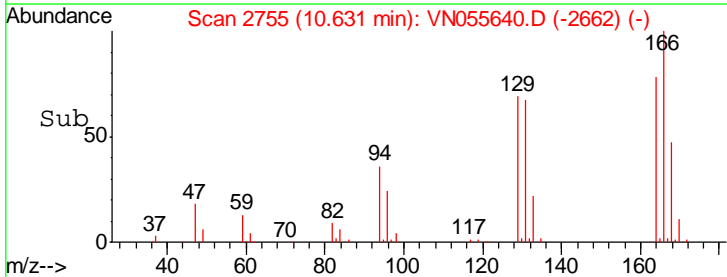
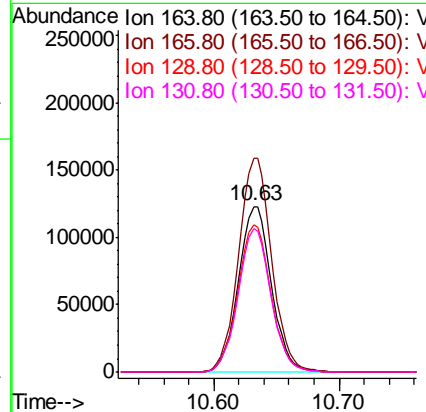
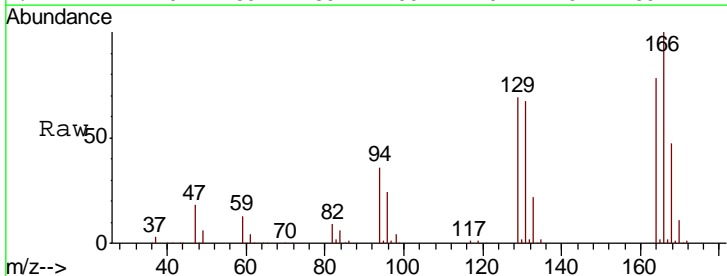
Instrument :  
 MSVOA\_N  
 ClientSampled :

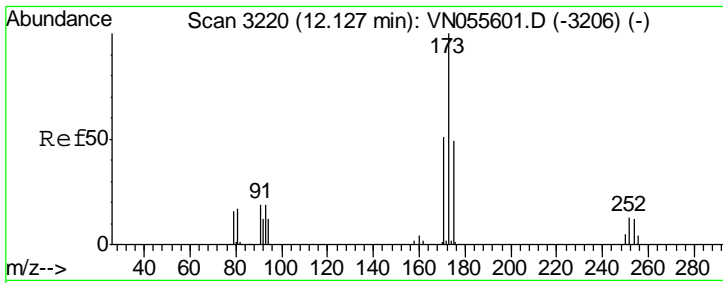
Tgt Ion	Resp	Lower	Upper
117	498533		
82	51.5	42.3	63.5
119	32.0	25.4	38.2



#64  
 Tetrachloroethene  
 Concen: 57.198 ug/l  
 RT: 10.63 min Scan# 2755  
 Delta R.T. -0.00 min  
 Lab File: VN055640.D  
 Acq: 18 May 2019 4:09

Tgt Ion	Resp	Lower	Upper
164	224909		
166	128.9	101.0	151.6
129	88.9	71.7	107.5
131	86.3	69.6	104.4

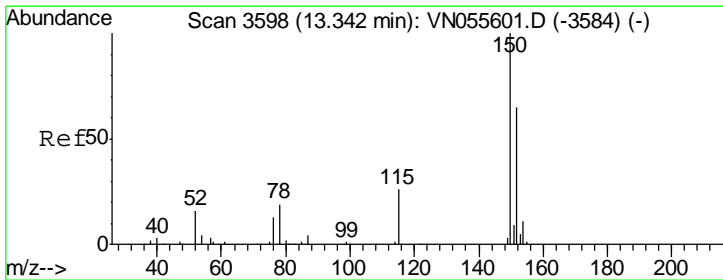
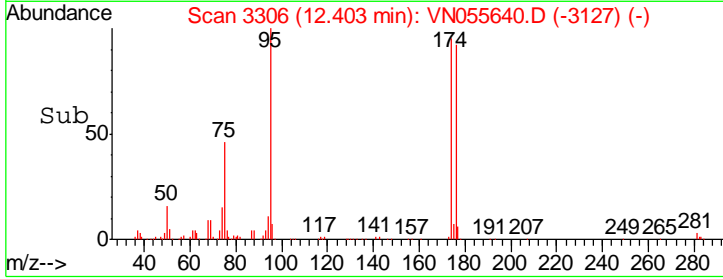
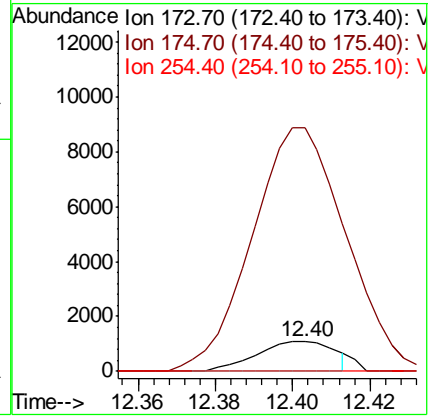
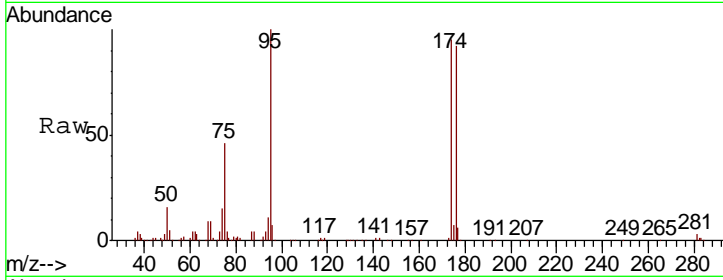




#71  
 Bromoform  
 Concen: 0.442 ug/l  
 RT: 12.40 min Scan# 3306  
 Delta R.T. 0.28 min  
 Lab File: VN055640.D  
 Acq: 18 May 2019 4:09

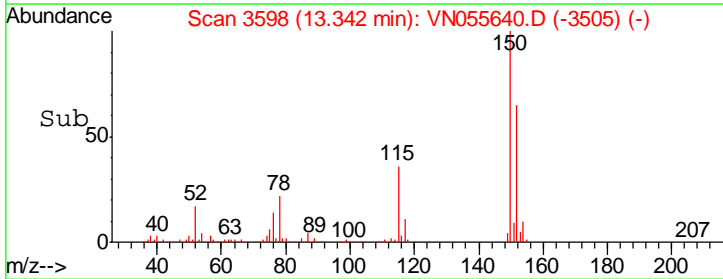
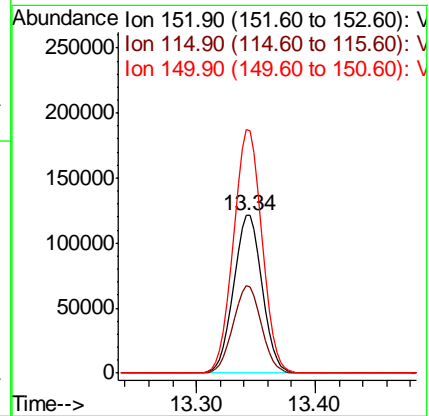
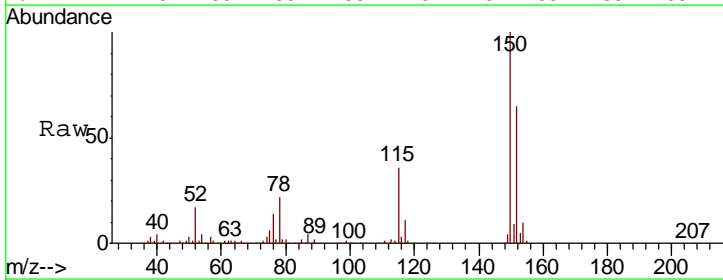
Instrument :  
 MSVOA\_N  
 ClientSampled :

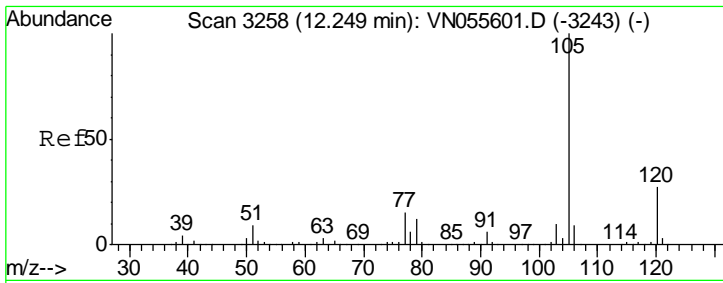
Tgt Ion	Resp	Lower	Upper
173	1520		
175	853.6	24.3	72.9#
254	0.0	0.1	0.1#



#72  
 1,4-Dichlorobenzene-d4  
 Concen: 50.000 ug/l  
 RT: 13.34 min Scan# 3598  
 Delta R.T. -0.00 min  
 Lab File: VN055640.D  
 Acq: 18 May 2019 4:09

Tgt Ion	Resp	Lower	Upper
152	201602		
115	55.1	28.1	84.2
150	154.5	0.0	348.0



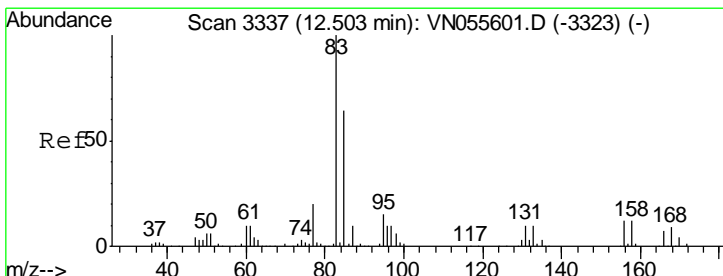
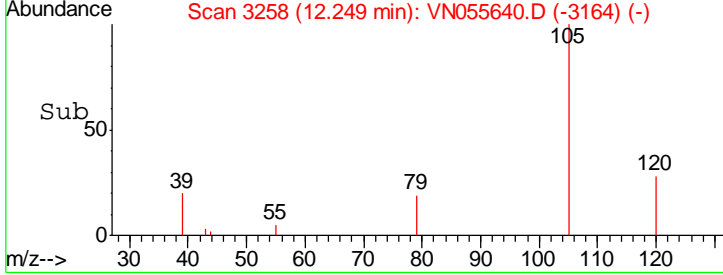
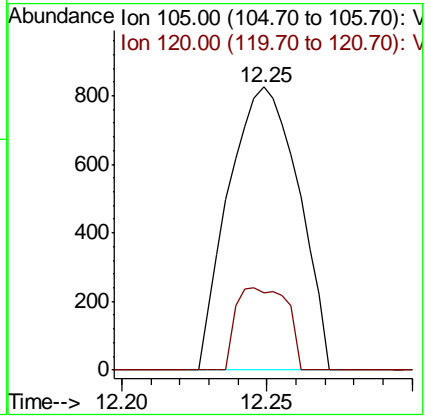
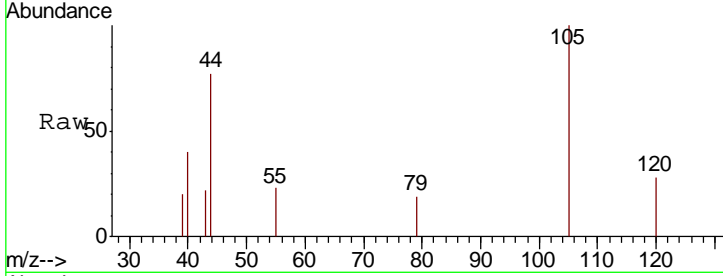


#73  
 Isopropylbenzene  
 Concen: Below Cal  
 RT: 12.25 min Scan# 3258  
 Delta R.T. 0.00 min  
 Lab File: VN055640.D  
 Acq: 18 May 2019 4:09

Instrument : MSVOA\_N  
 ClientSampled :

Tgt Ion: 105 Resp: 1382

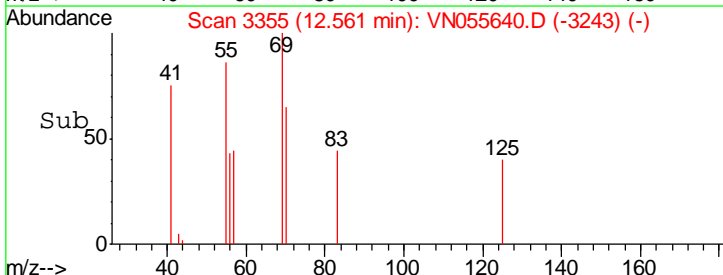
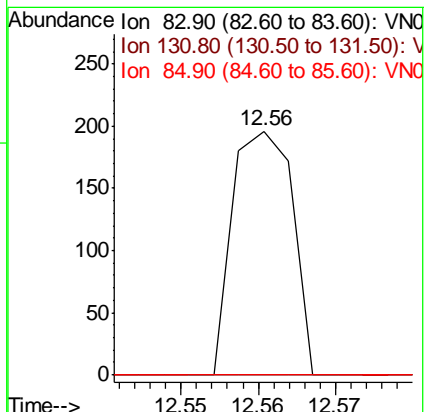
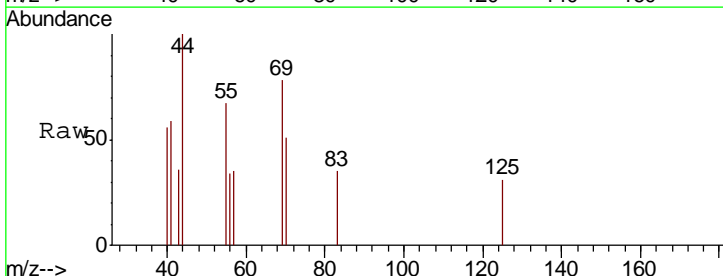
Ion	Ratio	Lower	Upper
105	100		
120	21.3	13.4	40.2

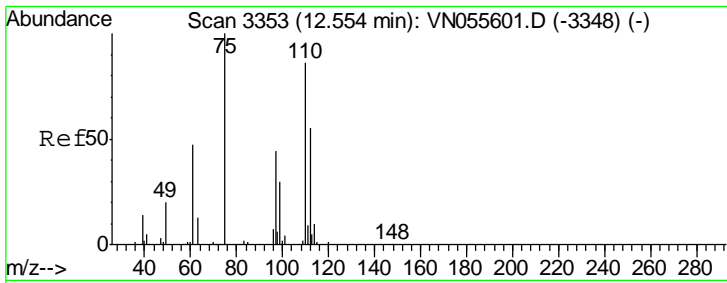


#75  
 1,1,2,2-Tetrachloroethane  
 Concen: Below Cal  
 RT: 12.56 min Scan# 3355  
 Delta R.T. 0.06 min  
 Lab File: VN055640.D  
 Acq: 18 May 2019 4:09

Tgt Ion: 83 Resp: 106

Ion	Ratio	Lower	Upper
83	100		
131	0.0	5.3	16.1#
85	0.0	32.0	96.2#

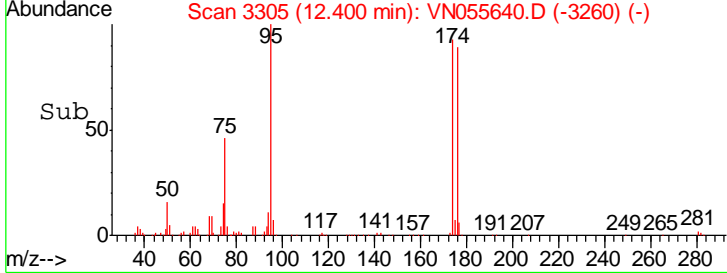
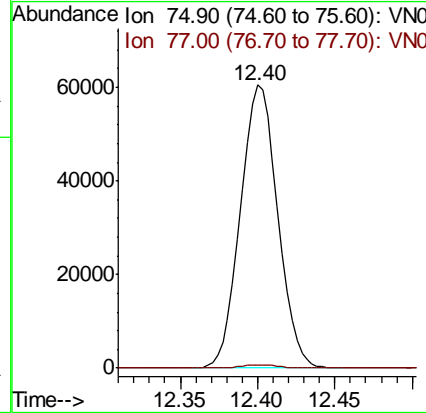
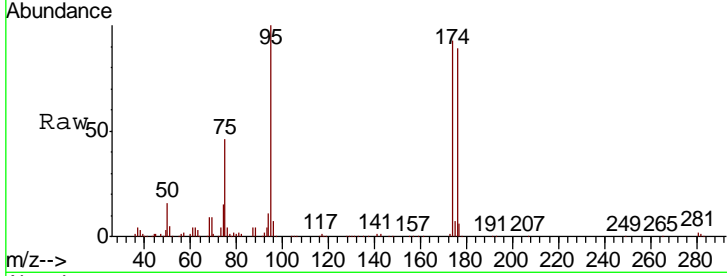




#76  
 1,2,3-Trichloropropane  
 Concen: 24.669 ug/l  
 RT: 12.40 min Scan# 3305  
 Delta R.T. -0.15 min  
 Lab File: VN055640.D  
 Acq: 18 May 2019 4:09

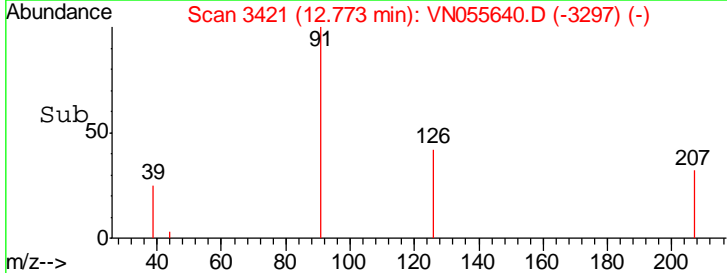
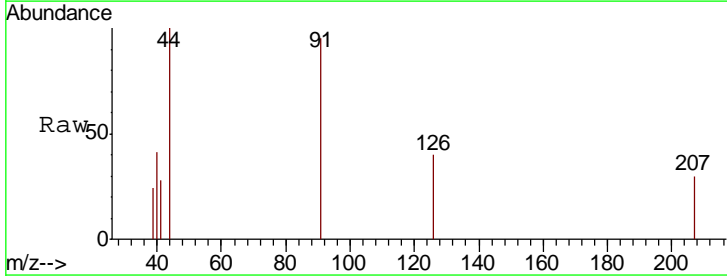
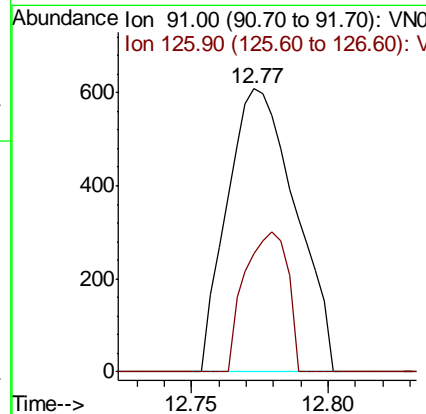
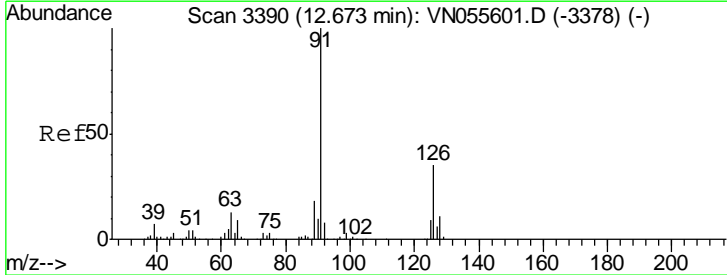
Instrument : MSVOA\_N  
 ClientSampled :

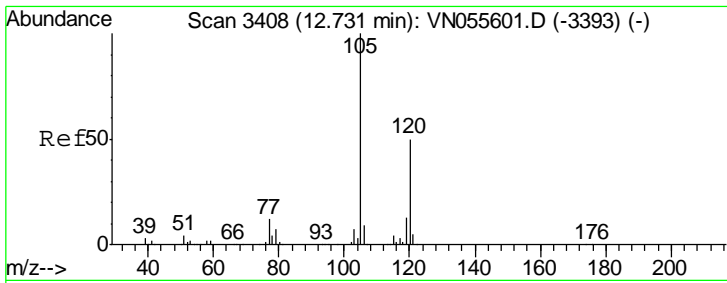
Tgt Ion: 75 Resp: 101481  
 Ion Ratio Lower Upper  
 75 100  
 77 1.1 0.0 0.0#



#79  
 2-Chlorotoluene  
 Concen: Below Cal  
 RT: 12.77 min Scan# 3421  
 Delta R.T. 0.10 min  
 Lab File: VN055640.D  
 Acq: 18 May 2019 4:09

Tgt Ion: 91 Resp: 1058  
 Ion Ratio Lower Upper  
 91 100  
 126 31.0 17.8 53.4

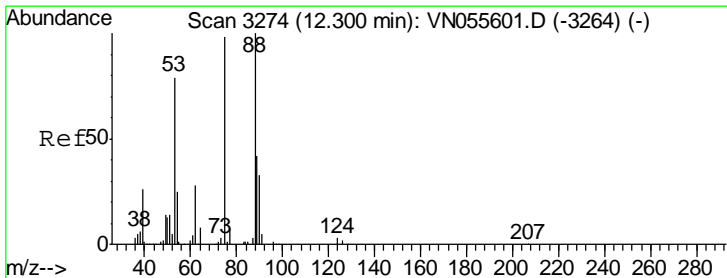
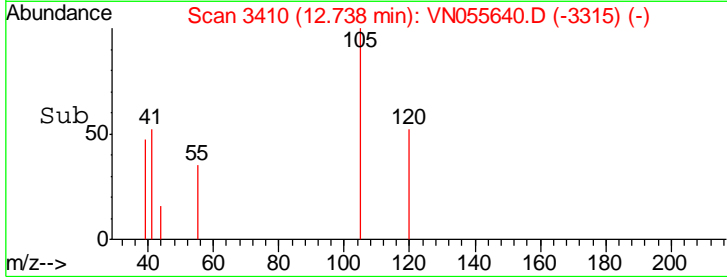
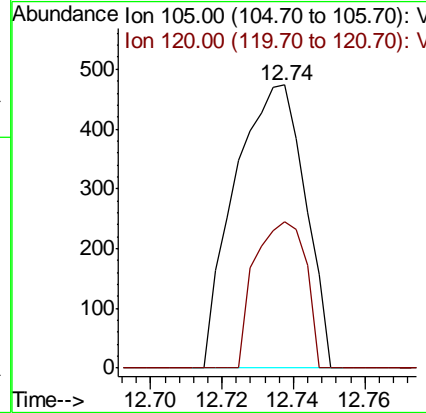
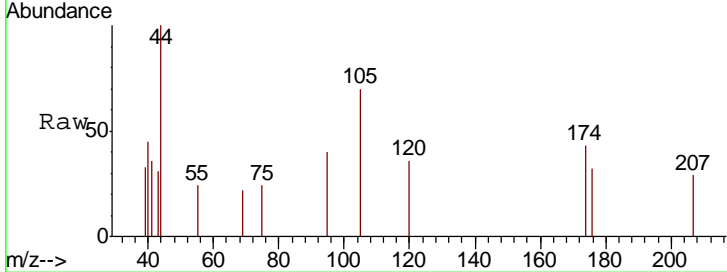




#80  
 1,3,5-Trimethylbenzene  
 Concen: Below Cal  
 RT: 12.74 min Scan# 3410  
 Delta R.T. 0.01 min  
 Lab File: VN055640.D  
 Acq: 18 May 2019 4:09

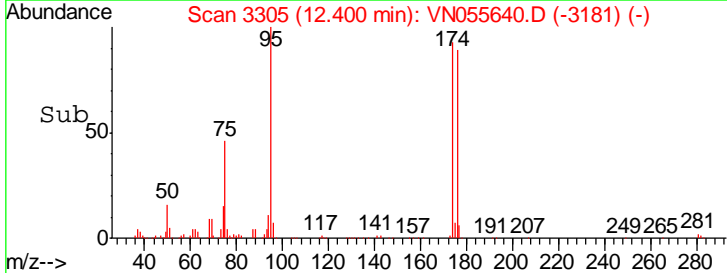
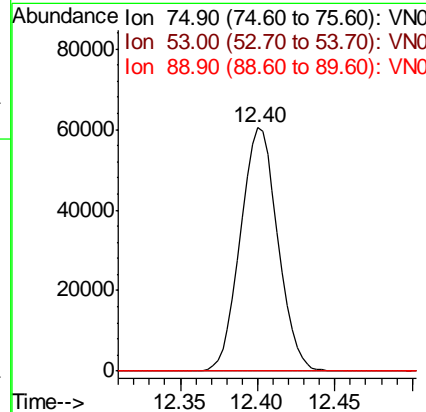
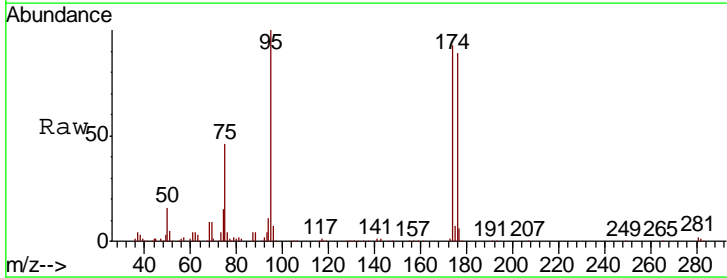
Instrument : MSVOA\_N  
 ClientSampled :

Tgt Ion: 105 Resp: 643  
 Ion Ratio Lower Upper  
 105 100  
 120 37.6 24.6 74.0

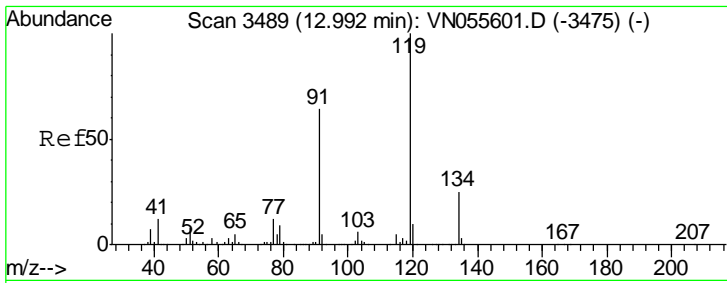


#81  
 trans-1,4-Dichloro-2-butene  
 Concen: 63.413 ug/l  
 RT: 12.40 min Scan# 3305  
 Delta R.T. 0.10 min  
 Lab File: VN055640.D  
 Acq: 18 May 2019 4:09

Tgt Ion: 75 Resp: 101481  
 Ion Ratio Lower Upper  
 75 100  
 53 0.0 65.1 97.7#  
 89 0.0 36.4 54.6#



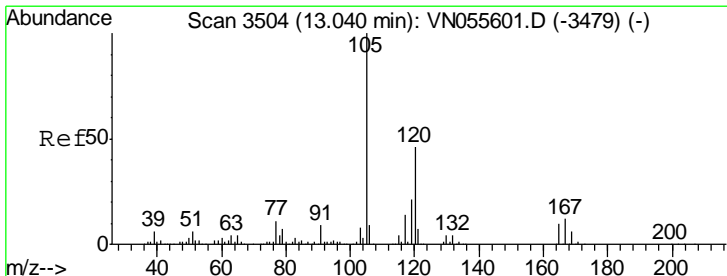
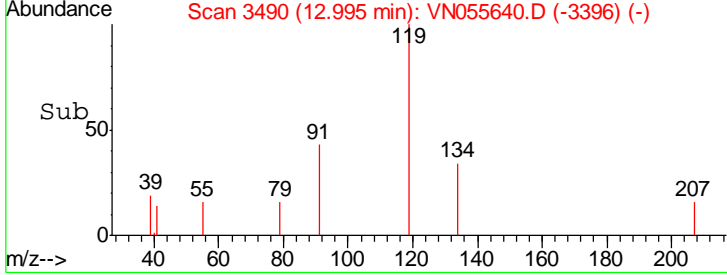
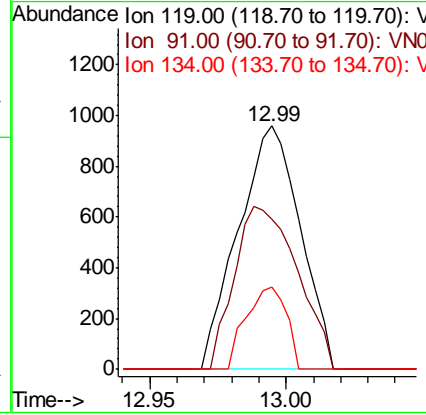
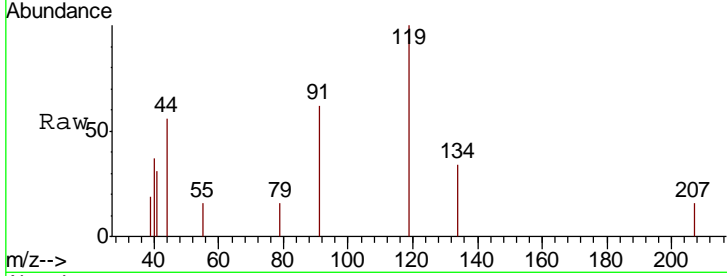




#83  
 tert-Butylbenzene  
 Concen: Below Cal  
 RT: 12.99 min Scan# 3490  
 Delta R.T. 0.00 min  
 Lab File: VN055640.D  
 Acq: 18 May 2019 4:09

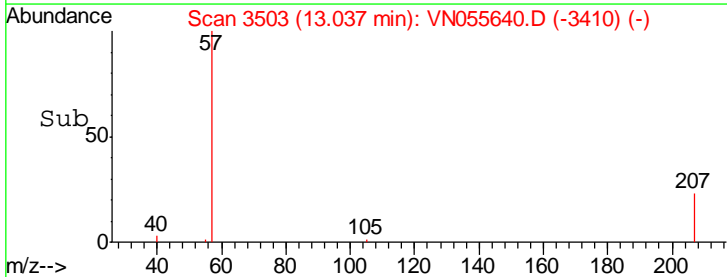
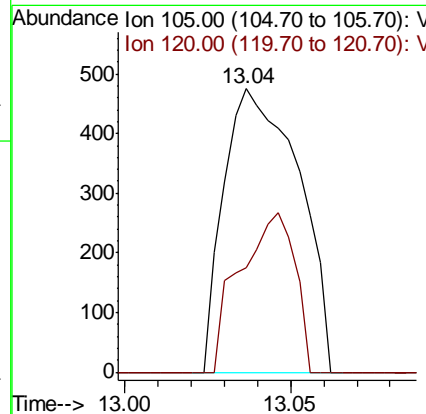
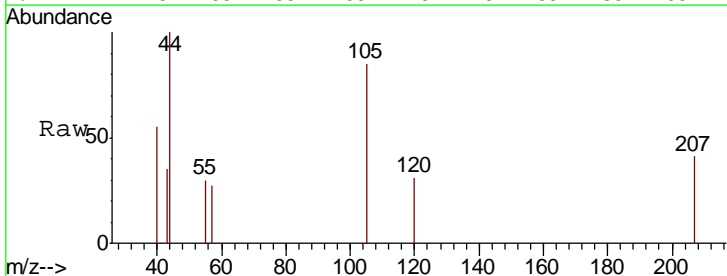
Instrument : MSVOA\_N  
 ClientSampled :

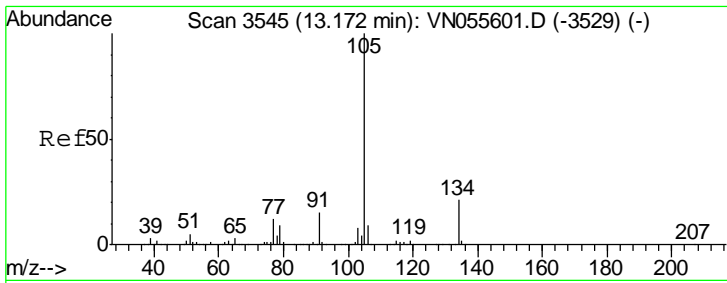
Tgt Ion	Resp	Lower	Upper
119	1513		
91	68.1	31.3	93.8
134	21.7	13.2	39.6



#84  
 1,2,4-Trimethylbenzene  
 Concen: Below Cal  
 RT: 13.04 min Scan# 3503  
 Delta R.T. -0.00 min  
 Lab File: VN055640.D  
 Acq: 18 May 2019 4:09

Tgt Ion	Resp	Lower	Upper
105	747		
120	41.1	23.1	69.2

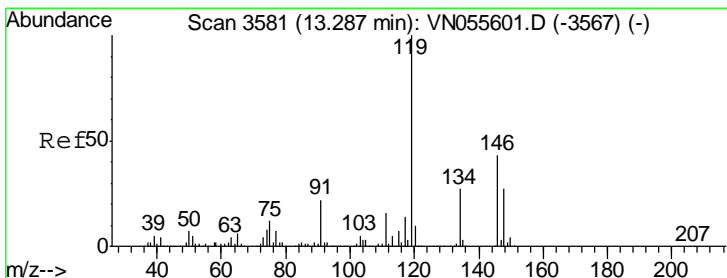
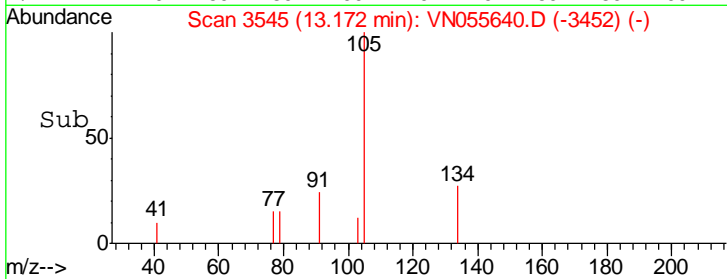
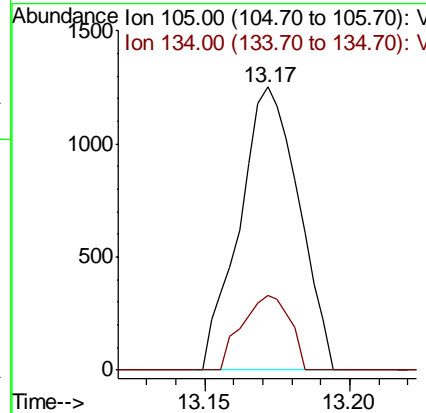
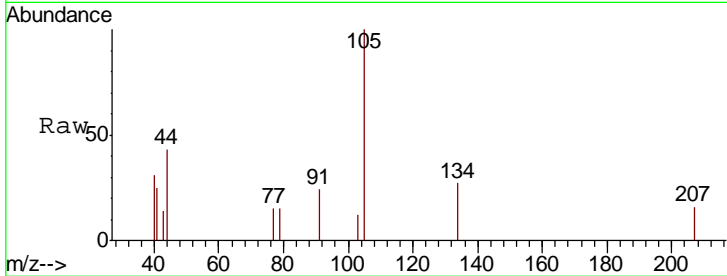




#85  
 sec-Butylbenzene  
 Concen: Below Cal  
 RT: 13.17 min Scan# 3545  
 Delta R.T. 0.00 min  
 Lab File: VN055640.D  
 Acq: 18 May 2019 4:09

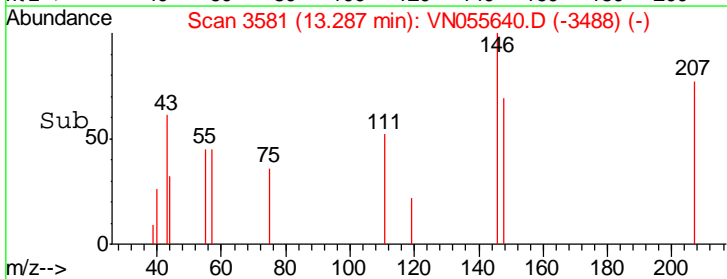
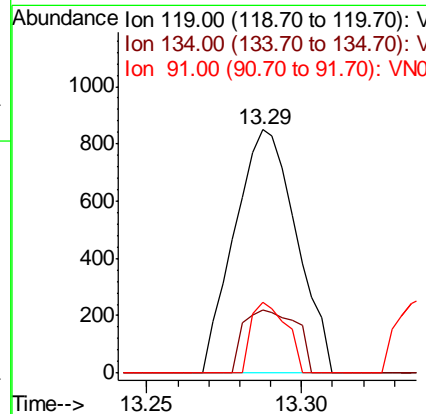
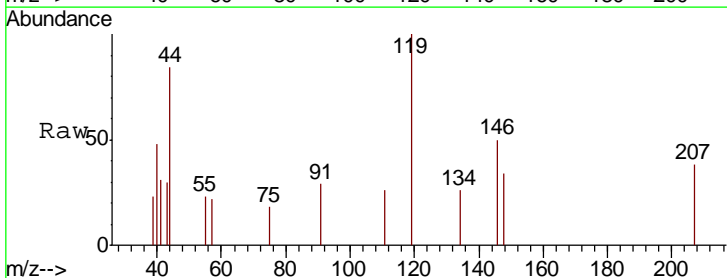
Instrument :  
 MSVOA\_N  
 ClientSampled :

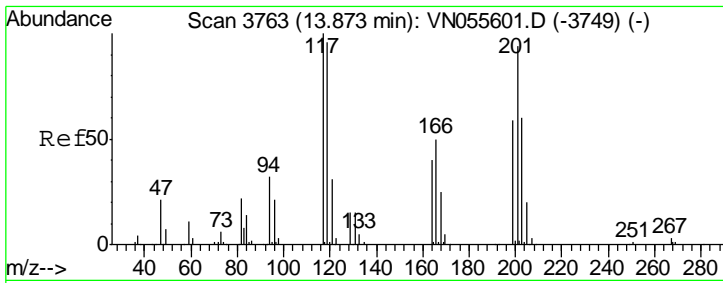
Tgt Ion: 105 Resp: 1781  
 Ion Ratio Lower Upper  
 105 100  
 134 21.2 10.3 30.9



#86  
 p-Isopropyltoluene  
 Concen: Below Cal  
 RT: 13.29 min Scan# 3581  
 Delta R.T. 0.00 min  
 Lab File: VN055640.D  
 Acq: 18 May 2019 4:09

Tgt Ion: 119 Resp: 1182  
 Ion Ratio Lower Upper  
 119 100  
 134 22.1 13.4 40.2  
 91 16.4 11.0 33.0

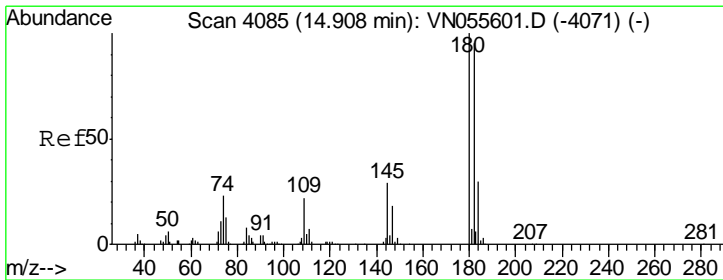
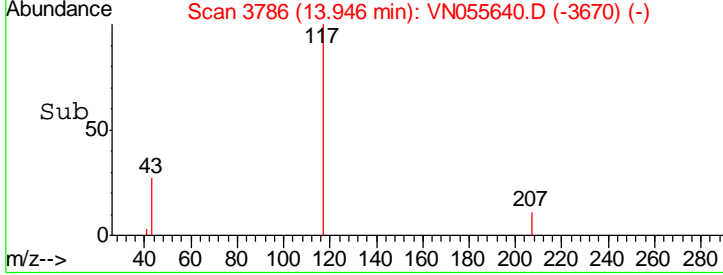
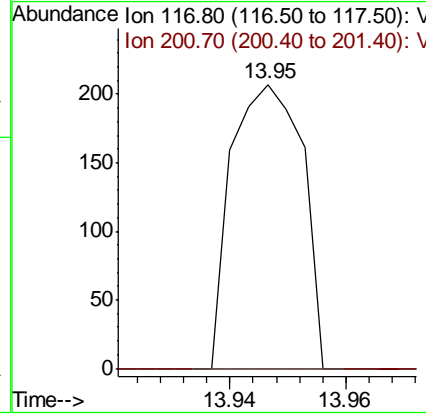
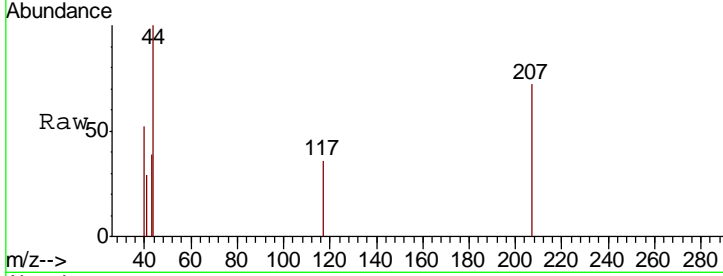




#90  
 Hexachloroethane  
 Concen: Below Cal  
 RT: 13.95 min Scan# 3786  
 Delta R.T. 0.07 min  
 Lab File: VN055640.D  
 Acq: 18 May 2019 4:09

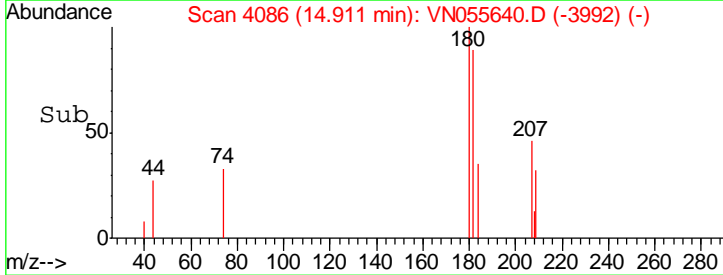
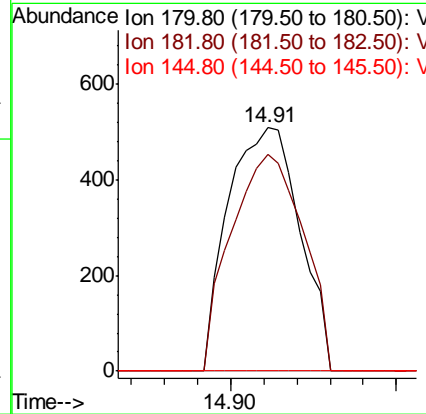
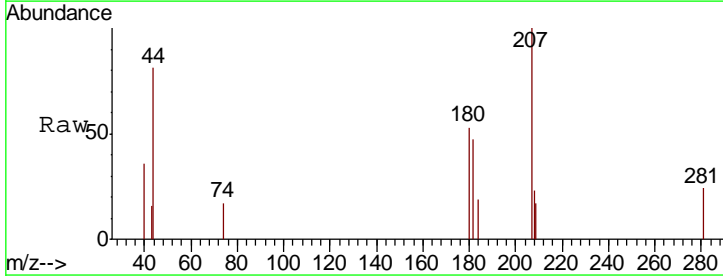
Instrument : MSVOA\_N  
 ClientSampled :

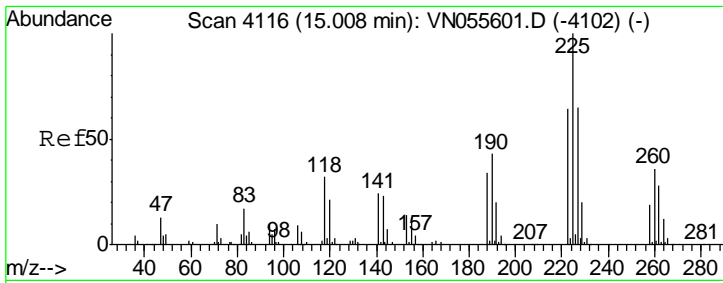
Tgt Ion:117 Resp: 175  
 Ion Ratio Lower Upper  
 117 100  
 201 0.0 47.1 141.3#



#93  
 1,2,4-Trichlorobenzene  
 Concen: 0.221 ug/l  
 RT: 14.91 min Scan# 4086  
 Delta R.T. 0.00 min  
 Lab File: VN055640.D  
 Acq: 18 May 2019 4:09

Tgt Ion:180 Resp: 767  
 Ion Ratio Lower Upper  
 180 100  
 182 89.6 47.9 143.6  
 145 0.0 14.3 42.9#

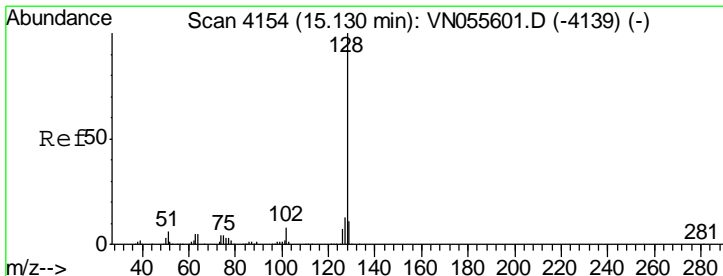
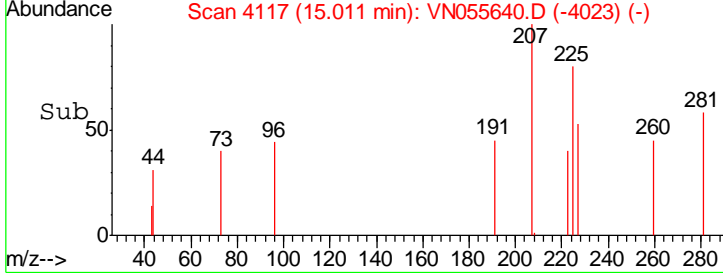
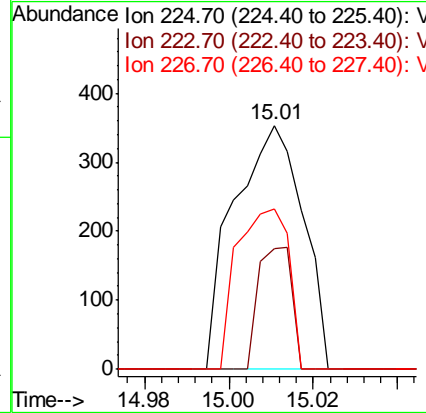
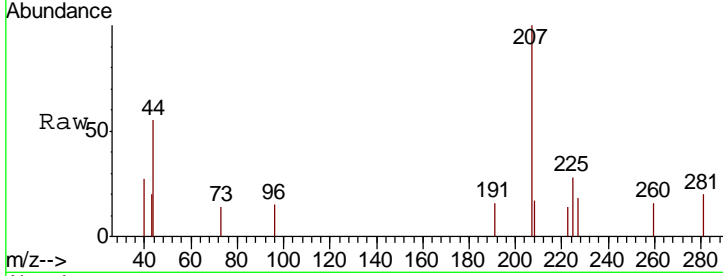




#94  
 Hexachlorobutadiene  
 Concen: Below Cal  
 RT: 15.01 min Scan# 4117  
 Delta R.T. 0.00 min  
 Lab File: VN055640.D  
 Acq: 18 May 2019 4:09

Instrument :  
 MSVOA\_N  
 ClientSampled :

Tgt Ion	Resp	Lower	Upper
225	403		
223	24.3	31.6	94.7#
227	49.1	32.4	97.0



#95  
 Naphthalene  
 Concen: 1.983 ug/l  
 RT: 15.13 min Scan# 4155  
 Delta R.T. 0.00 min  
 Lab File: VN055640.D  
 Acq: 18 May 2019 4:09

Tgt Ion	Resp	Lower	Upper
128	2378		
127	6.1	10.2	15.4#
129	0.0	8.6	12.8#

