

Data Path : Z:\voasrv\HPCHEM1\MSVOA_N\Data\VN051821\
 Data File : VN067123.D
 Acq On : 18 May 2021 13:33
 Operator : JC/MD
 Sample : M2388-12DL 50X
 Misc : 5.00mL/MSVOA_N/WATER
 ALS Vial : 7 Sample Multiplier: 1

Instrument :
 MSVOA_N
 ClientSampleID :
 41769DL

Quant Time: May 19 02:48:25 2021
 Quant Method : Z:\voasrv\HPCHEM1\MSVOA_N\methods\82N051421W.M
 Quant Title : SW846 8260
 QLast Update : Tue May 18 04:00:15 2021
 Response via : Initial Calibration

Compound	R.T.	QIon	Response	Conc	Units	Dev(Min)

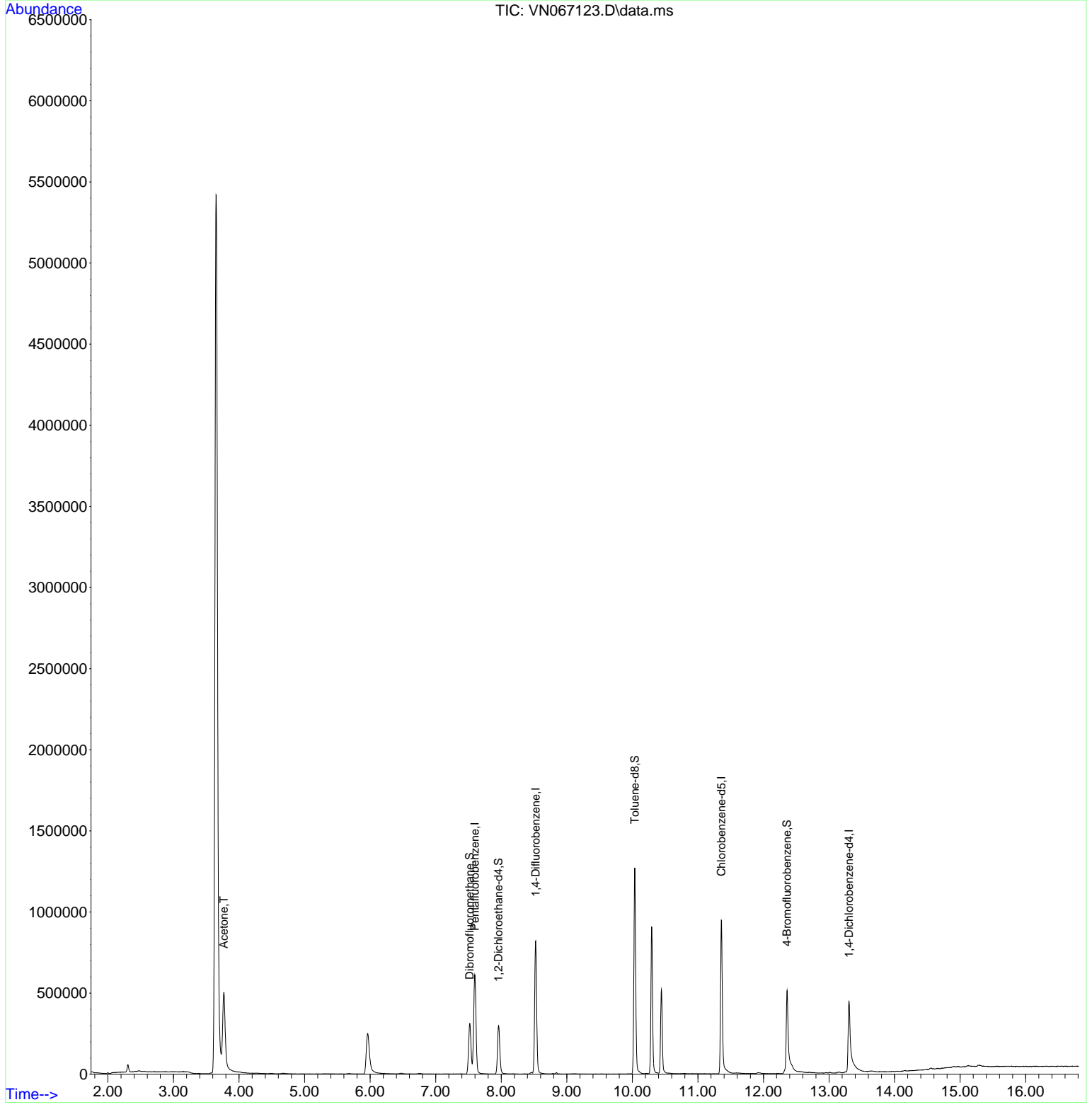
Internal Standards						
1) Pentafluorobenzene	7.597	168	601275	50.00	ug/l	0.00
34) 1,4-Difluorobenzene	8.525	114	825745	50.00	ug/l	0.00
63) Chlorobenzene-d5	11.360	117	681688	50.00	ug/l	0.00
72) 1,4-Dichlorobenzene-d4	13.304	152	238424	50.00	ug/l	0.00
System Monitoring Compounds						
33) 1,2-Dichloroethane-d4	7.959	65	265631	40.89	ug/l	0.00
Spiked Amount	50.000	Range 61 - 141	Recovery =	81.78%		
35) Dibromofluoromethane	7.519	113	254787	46.99	ug/l	0.00
Spiked Amount	50.000	Range 69 - 133	Recovery =	93.98%		
50) Toluene-d8	10.038	98	964530	46.94	ug/l	0.00
Spiked Amount	50.000	Range 65 - 126	Recovery =	93.88%		
62) 4-Bromofluorobenzene	12.360	95	268773	39.05	ug/l	0.00
Spiked Amount	50.000	Range 58 - 135	Recovery =	78.10%		
Target Compounds						
16) Acetone	3.770	43	771607	382.20	ug/l #	Qvalue 86

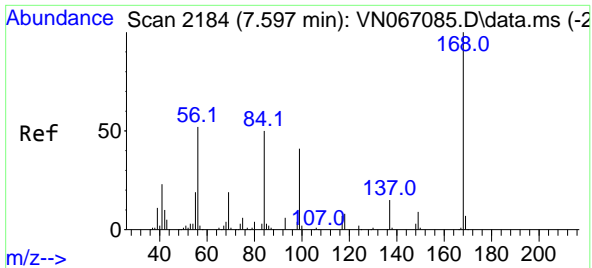
(#) = qualifier out of range (m) = manual integration (+) = signals summed

Data Path : Z:\voasrv\HPCHEM1\MSVOA_N\Data\VN051821\
 Data File : VN067123.D
 Acq On : 18 May 2021 13:33
 Operator : JC/MD
 Sample : M2388-12DL 50X
 Misc : 5.00mL/MSVOA_N/WATER
 ALS Vial : 7 Sample Multiplier: 1

Instrument :
 MSVOA_N
ClientSampleID :
 41769DL

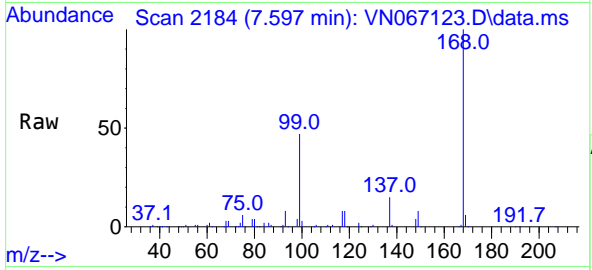
Quant Time: May 19 02:48:25 2021
 Quant Method : Z:\voasrv\HPCHEM1\MSVOA_N\methods\82N051421W.M
 Quant Title : SW846 8260
 QLast Update : Tue May 18 04:00:15 2021
 Response via : Initial Calibration



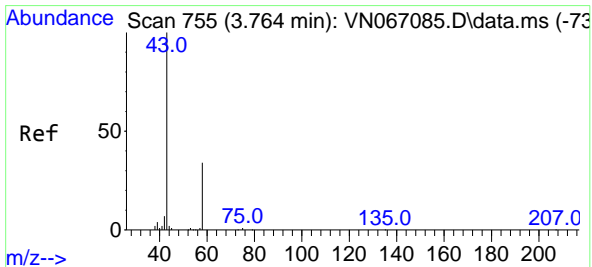
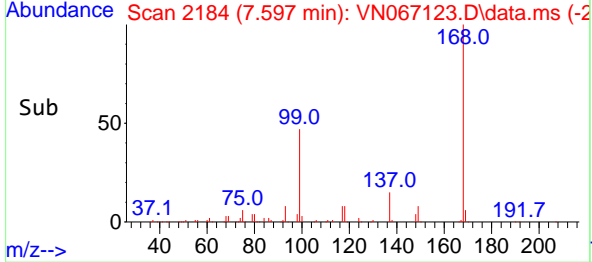
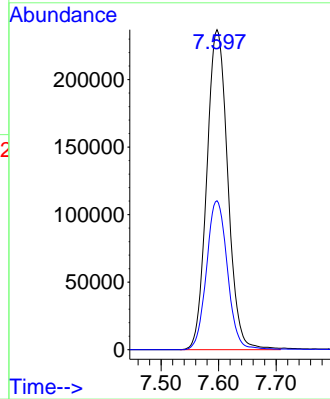


#1
 Pentafluorobenzene
 Concen: 50.00 ug/l
 RT: 7.597 min Scan# 2184
 Delta R.T. 0.000 min
 Lab File: VN067123.D
 Acq: 18 May 2021 13:33

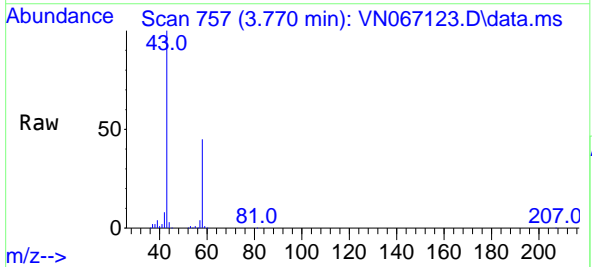
Instrument :
 MSVOA_N
 ClientSampled :
 41769DL



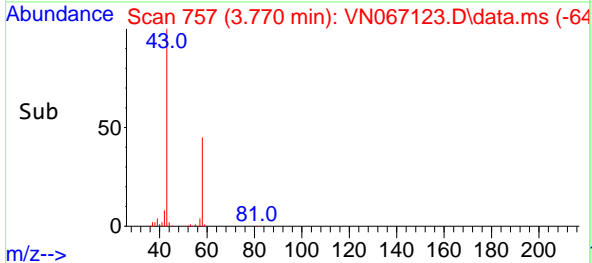
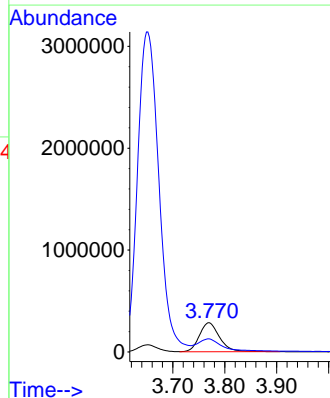
Tgt Ion:168 Resp: 601275
 Ion Ratio Lower Upper
 168 100
 99 46.6 38.5 57.7

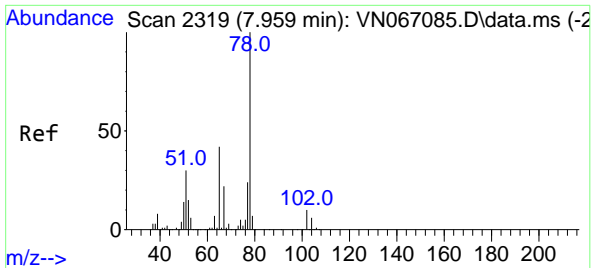


#16
 Acetone
 Concen: 382.20 ug/l
 RT: 3.770 min Scan# 757
 Delta R.T. 0.006 min
 Lab File: VN067123.D
 Acq: 18 May 2021 13:33



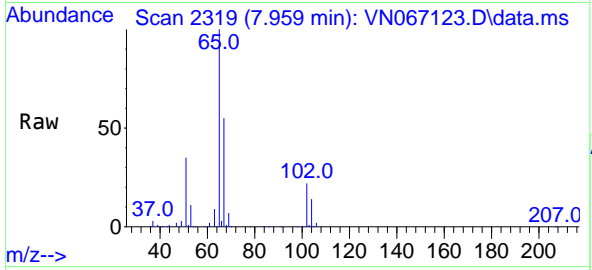
Tgt Ion: 43 Resp: 771607
 Ion Ratio Lower Upper
 43 100
 58 42.1 27.2 40.8#



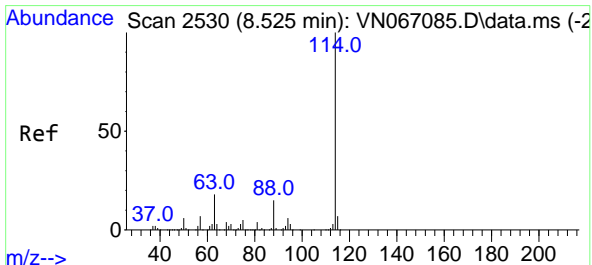
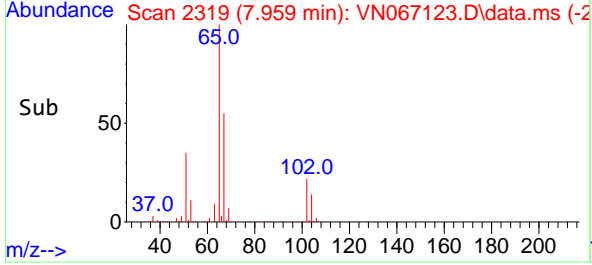
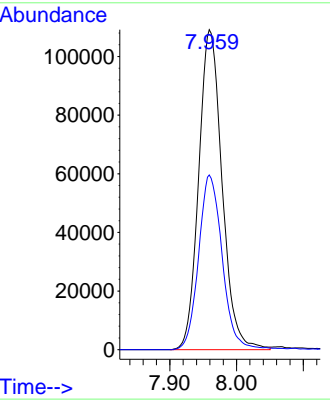


#33
 1,2-Dichloroethane-d4
 Concen: 40.89 ug/l
 RT: 7.959 min Scan# 2319
 Delta R.T. 0.000 min
 Lab File: VN067123.D
 Acq: 18 May 2021 13:33

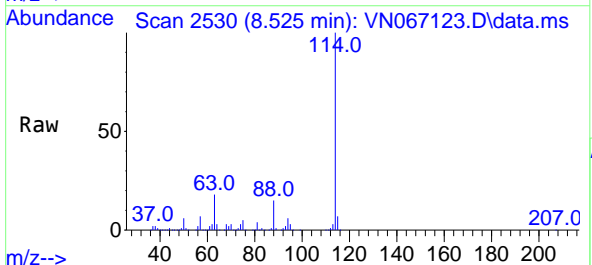
Instrument :
 MSVOA_N
ClientSampled :
 41769DL



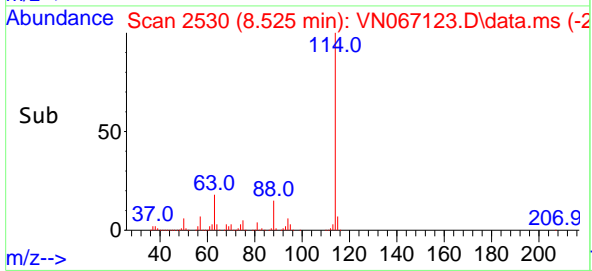
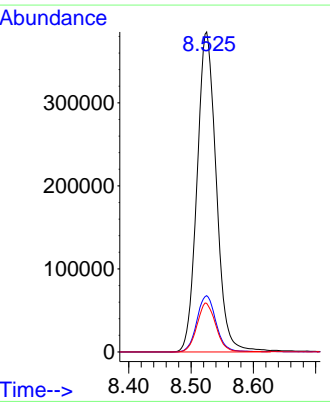
Tgt Ion: 65 Resp: 265631
 Ion Ratio Lower Upper
 65 100
 67 55.2 0.0 110.4

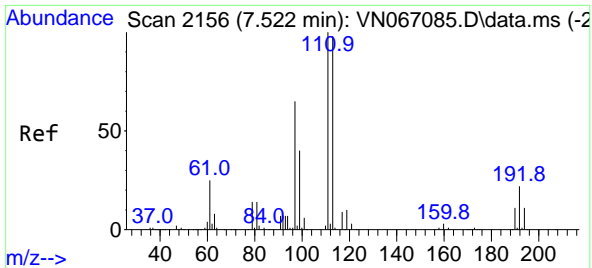


#34
 1,4-Difluorobenzene
 Concen: 50.00 ug/l
 RT: 8.525 min Scan# 2530
 Delta R.T. -0.000 min
 Lab File: VN067123.D
 Acq: 18 May 2021 13:33



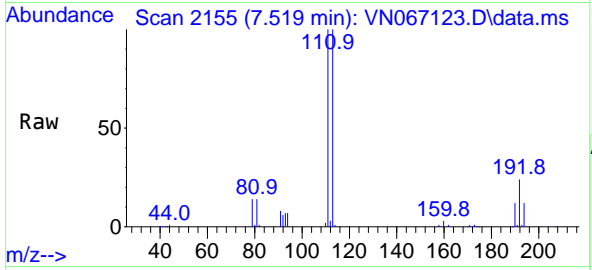
Tgt Ion: 114 Resp: 825745
 Ion Ratio Lower Upper
 114 100
 63 17.6 0.0 35.8
 88 15.2 0.0 30.4



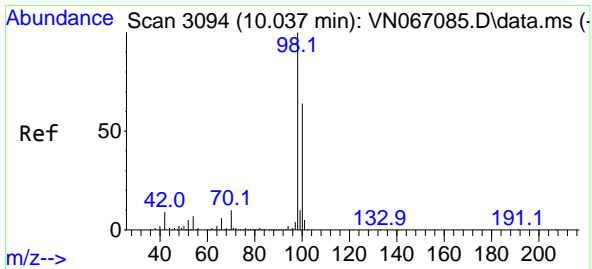
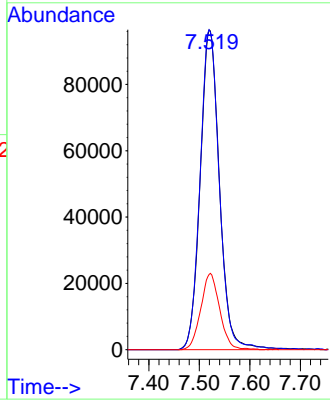
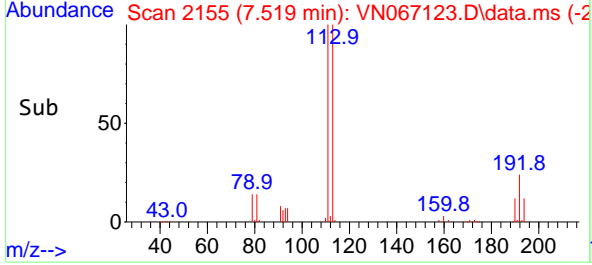


#35
 Dibromofluoromethane
 Concen: 46.99 ug/l
 RT: 7.519 min Scan# 2155
 Delta R.T. -0.003 min
 Lab File: VN067123.D
 Acq: 18 May 2021 13:33

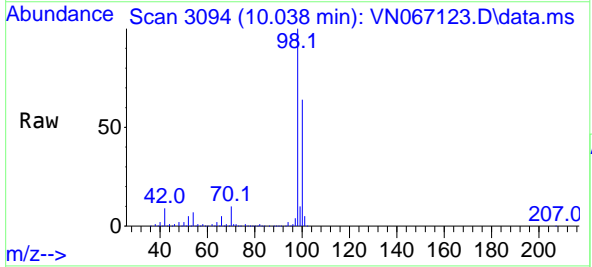
Instrument :
 MSVOA_N
ClientSampled :
 41769DL



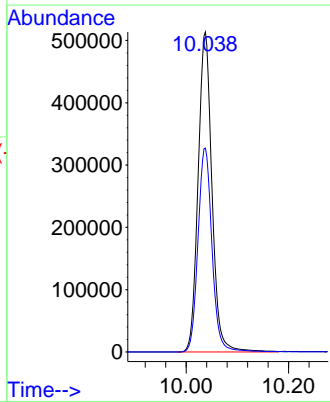
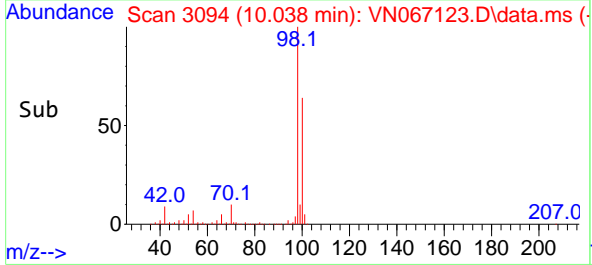
Tgt Ion:113 Resp: 254787
 Ion Ratio Lower Upper
 113 100
 111 99.2 82.6 124.0
 192 23.3 18.2 27.4

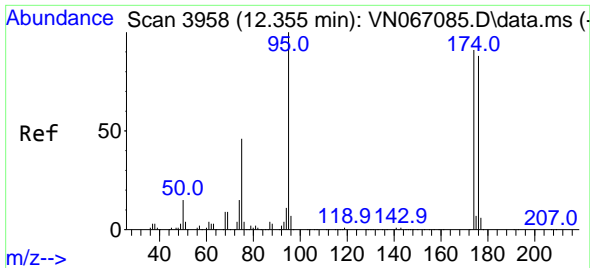


#50
 Toluene-d8
 Concen: 46.94 ug/l
 RT: 10.038 min Scan# 3094
 Delta R.T. 0.001 min
 Lab File: VN067123.D
 Acq: 18 May 2021 13:33



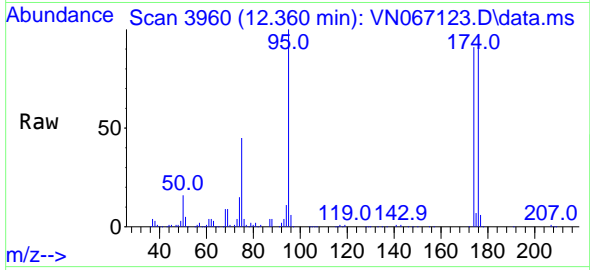
Tgt Ion: 98 Resp: 964530
 Ion Ratio Lower Upper
 98 100
 100 64.3 51.8 77.8





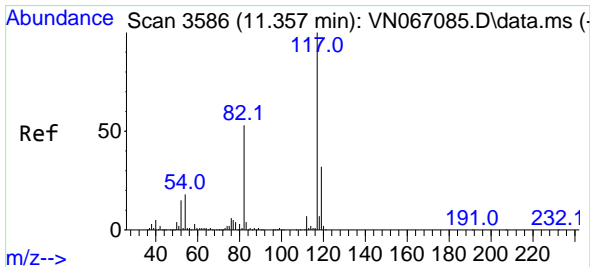
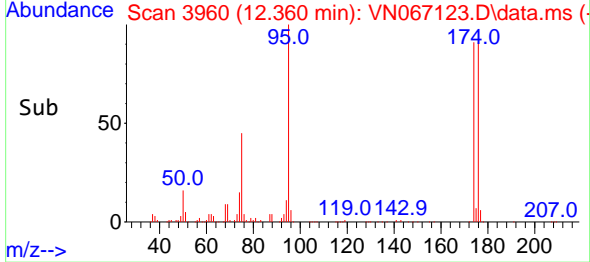
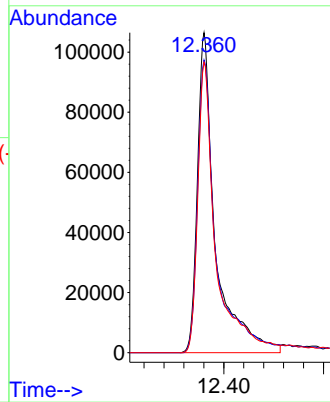
#62
 4-Bromofluorobenzene
 Concen: 39.05 ug/l
 RT: 12.360 min Scan# 3960
 Delta R.T. 0.005 min
 Lab File: VN067123.D
 Acq: 18 May 2021 13:33

Instrument :
 MSVOA_N
 ClientSampled :
 41769DL

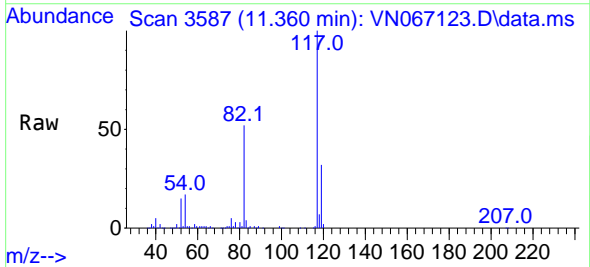


Tgt Ion: 95 Resp: 268773

Ion	Ratio	Lower	Upper
95	100		
174	93.0	0.0	182.8
176	89.2	0.0	176.6

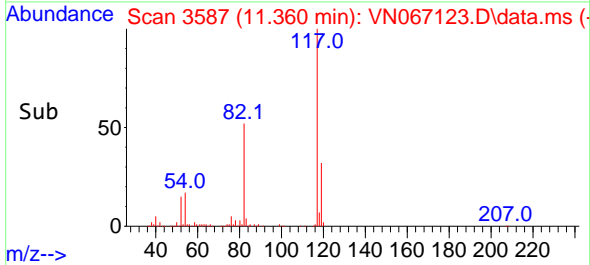
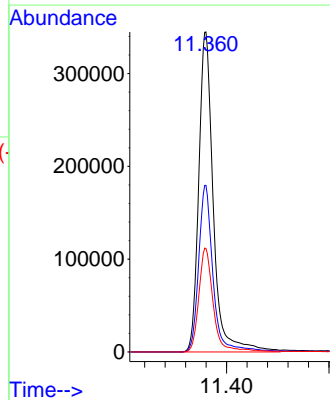


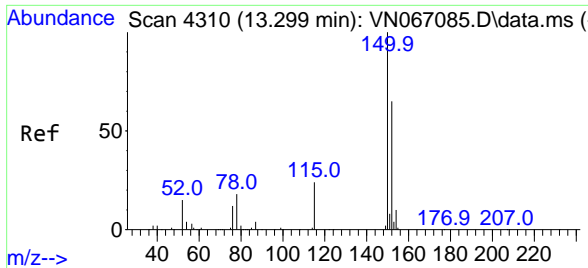
#63
 Chlorobenzene-d5
 Concen: 50.00 ug/l
 RT: 11.360 min Scan# 3587
 Delta R.T. 0.003 min
 Lab File: VN067123.D
 Acq: 18 May 2021 13:33



Tgt Ion: 117 Resp: 681688

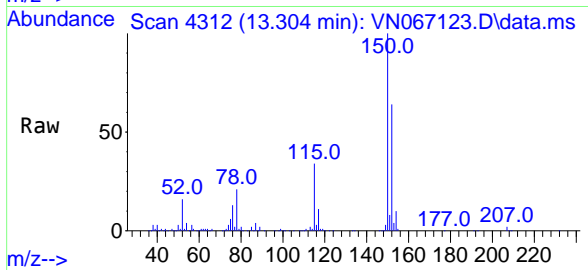
Ion	Ratio	Lower	Upper
117	100		
82	52.0	42.2	63.2
119	32.4	25.8	38.6





#72
 1,4-Dichlorobenzene-d4
 Concen: 50.00 ug/l
 RT: 13.304 min Scan# 4312
 Delta R.T. 0.005 min
 Lab File: VN067123.D
 Acq: 18 May 2021 13:33

Instrument :
 MSVOA_N
 ClientSampled :
 41769DL



Tgt Ion:152 Resp: 238424
 Ion Ratio Lower Upper
 152 100
 115 51.7 27.0 80.8
 150 159.4 0.0 350.2

