

Data Path : Z:\VOASRV\HPCHEM1\MSVOA N\DATA\VN051920\
 Data File : VN061493.D
 Acq On : 19 May 2020 19:04
 Operator : JC/MD
 Sample : L2645-02DL 10X
 Misc : 5.00mL/MSVOA N/WATER
 ALS Vial : 20 Sample Multiplier: 1

Instrument :
 MSVOA_N
 ClientSampled :
 MW-3DL

Quant Time: May 20 03:00:44 2020
 Quant Method : Z:\VOASRV\HPCHEM1\MSVOA_N\METHODS\82N051820W.M
 Quant Title : SW846 8260
 QLast Update : Mon May 18 13:09:55 2020
 Response via : Initial Calibration

Internal Standards	R.T.	QIon	Response	Conc	Units	Dev(Min)
1) Pentafluorobenzene	7.63	168	280783	50.00	ug/l	0.00
34) 1,4-Difluorobenzene	8.55	114	516390	50.00	ug/l	0.00
63) Chlorobenzene-d5	11.38	117	503818	50.00	ug/l	0.00
72) 1,4-Dichlorobenzene-d4	13.32	152	225119	50.00	ug/l	0.00

System Monitoring Compounds

33) 1,2-Dichloroethane-d4	7.99	65	197061	47.03	ug/l	0.00
Spiked Amount	50.000		Recovery	=	94.06%	
35) Dibromofluoromethane	7.55	113	148490	54.89	ug/l	0.00
Spiked Amount	50.000		Recovery	=	109.78%	
50) Toluene-d8	10.06	98	640815	51.07	ug/l	0.00
Spiked Amount	50.000		Recovery	=	102.14%	
62) 4-Bromofluorobenzene	12.38	95	251715	53.70	ug/l	0.00
Spiked Amount	50.000		Recovery	=	107.40%	

Target Compounds

					Qvalue	
5) Bromomethane	2.56	94	152	Below Cal	#	30
11) Tert butyl alcohol	4.73	59	9191	19.035	ug/l #	73
13) Acrolein	3.54	56	69	Below Cal	#	16
15) Acrylonitrile	5.00	53	2679	1.873	ug/l #	39
16) Acetone	3.75	43	3550	Below Cal	#	62
17) Carbon Disulfide	4.00	76	1391	Below Cal	#	75
18) Methyl Acetate	4.48	43	22209	6.803	ug/l #	49
19) Methyl tert-butyl Ether	4.99	73	34603	3.168	ug/l #	1
20) Methylene Chloride	4.50	84	909	0.264	ug/l #	67
25) 2-Butanone	6.78	43	2516	1.319	ug/l #	85
27) cis-1,2-Dichloroethene	6.77	96	787	0.201	ug/l #	74
28) Bromochloromethane	7.33	49	6547	2.512	ug/l #	13
29) Tetrahydrofuran	7.18	42	259	0.205	ug/l #	29
30) Chloroform	7.33	83	83487	13.020	ug/l	96
31) Cyclohexane	7.61	56	33539	3.434	ug/l #	86
36) 1,1-Dichloropropene	7.63	75	23735	4.916	ug/l #	49
38) Carbon Tetrachloride	7.62	117	29684	6.676	ug/l #	16
39) Methylcyclohexane	9.05	83	26131	4.431	ug/l	97
40) Benzene	8.00	78	62285	4.280	ug/l	100
43) Isopropyl Acetate	8.10	43	2595	0.340	ug/l #	52
51) 4-Methyl-2-Pentanone	9.96	43	2504	0.602	ug/l #	86
52) Toluene	10.12	92	36183	3.873	ug/l	99
59) 2-Hexanone	10.73	43	947	0.315	ug/l	97
67) Ethyl Benzene	11.48	91	1229489	65.558	ug/l	100
68) m/p-Xylenes	11.60	106	388106	54.520	ug/l	99
69) o-Xylene	11.92	106	16835	2.444	ug/l	95
71) Bromoform	12.09	173	99	2.053	ug/l #	29
73) Isopropylbenzene	12.22	105	81948	4.534	ug/l	99
76) 1,2,3-Trichloropropane	12.38	75	129232	26.753	ug/l #	100
78) n-propylbenzene	12.57	91	253674	12.319	ug/l	99
79) 2-Chlorotoluene	12.66	91	32212	2.647	ug/l #	43
80) 1,3,5-Trimethylbenzene	12.71	105	135921	9.185	ug/l	99
81) trans-1,4-Dichloro-2-buten	12.38	75	129232	70.971	ug/l #	12
82) 4-Chlorotoluene	12.71	91	15957	1.266	ug/l #	43

Data Path : Z:\VOASRV\HPCHEM1\MSVOA N\DATA\VN051920\
 Data File : VN061493.D
 Acq On : 19 May 2020 19:04
 Operator : JC/MD
 Sample : L2645-02DL 10X
 Misc : 5.00mL/MSVOA N/WATER
 ALS Vial : 20 Sample Multiplier: 1

Instrument :
 MSVOA_N
 ClientSampleId :
 MW-3DL

Quant Time: May 20 03:00:44 2020
 Quant Method : Z:\VOASRV\HPCHEM1\MSVOA_N\METHODS\82N051820W.M
 Quant Title : SW846 8260
 QLast Update : Mon May 18 13:09:55 2020
 Response via : Initial Calibration

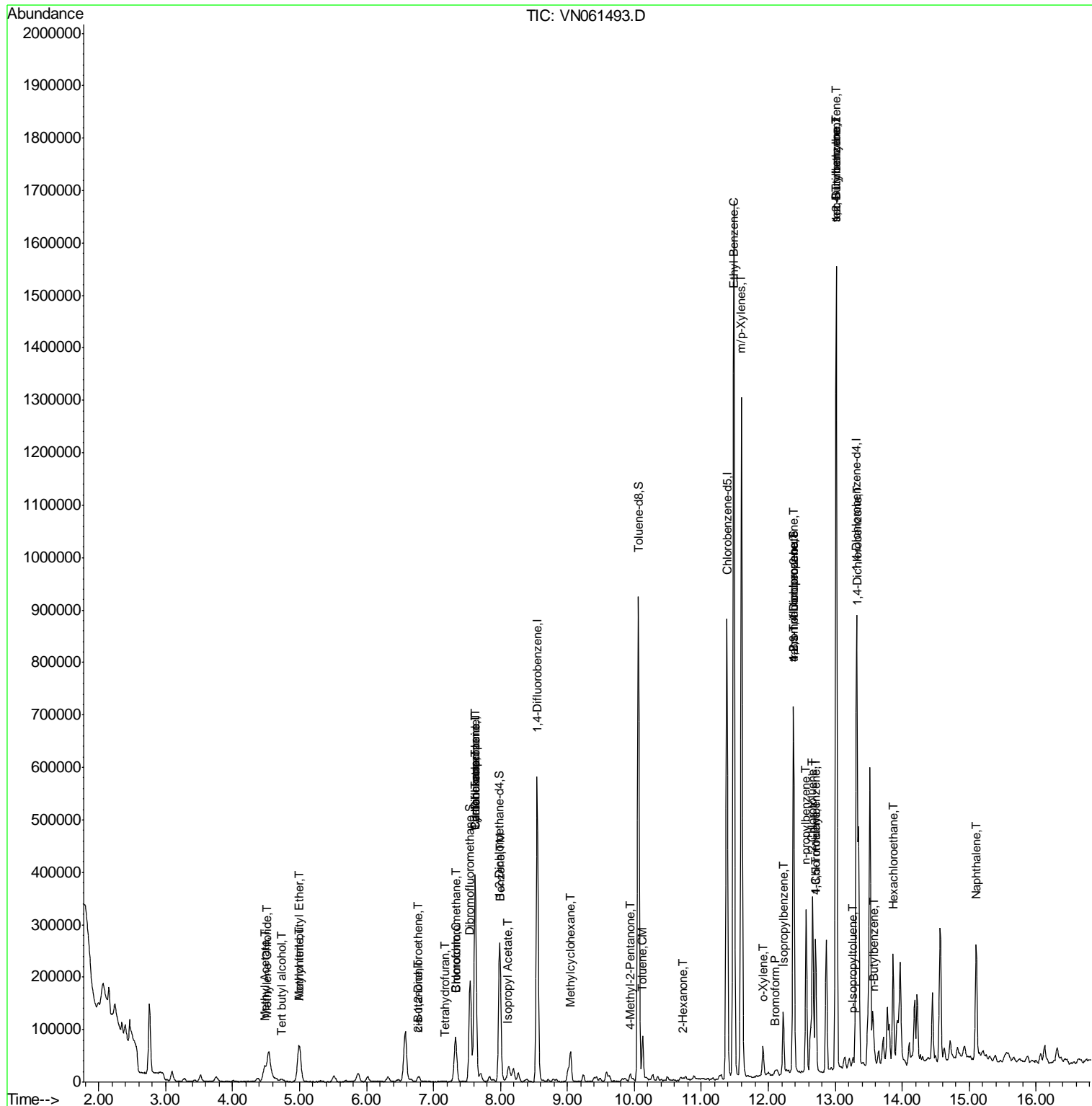
Internal Standards	R.T.	QIon	Response	Conc	Units	Dev(Min)
83) tert-Butylbenzene	13.01	119	102749	8.106	ug/l #	65
84) 1,2,4-Trimethylbenzene	13.01	105	864030	58.344	ug/l	99
85) sec-Butylbenzene	13.01	105	864030	50.411	ug/l #	57
86) p-Isopropyltoluene	13.26	119	6229	0.409	ug/l #	69
88) 1,4-Dichlorobenzene	13.33	146	1844	0.257	ug/l #	1
89) n-Butylbenzene	13.59	91	9639	0.697	ug/l #	67
90) Hexachloroethane	13.86	117	10189	4.940	ug/l #	17
95) Naphthalene	15.10	128	188019	15.841	ug/l	99

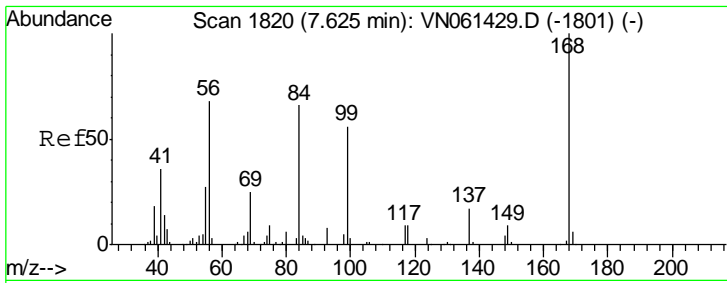
(#) = qualifier out of range (m) = manual integration (+) = signals summed

Data Path : Z:\VOASRV\HPCHEM1\MSVOA N\DATA\VN051920\
 Data File : VN061493.D
 Acq On : 19 May 2020 19:04
 Operator : JC/MD
 Sample : L2645-02DL 10X
 Misc : 5.00mL/MSVOA N/WATER
 ALS Vial : 20 Sample Multiplier: 1

Instrument :
 MSVOA_N
 Client Sampled :
 MW-3DL

Quant Time: May 20 03:00:44 2020
 Quant Method : Z:\VOASRV\HPCHEM1\MSVOA_N\METHODS\82N051820W.M
 Quant Title : SW846 8260
 QLast Update : Mon May 18 13:09:55 2020
 Response via : Initial Calibration

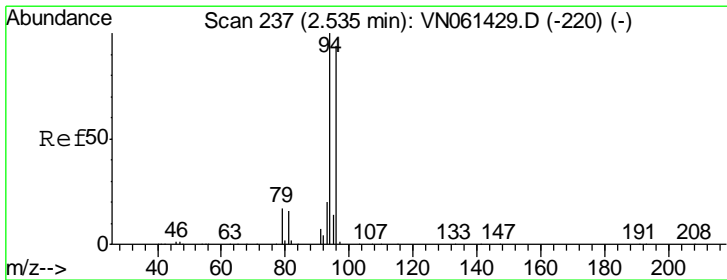
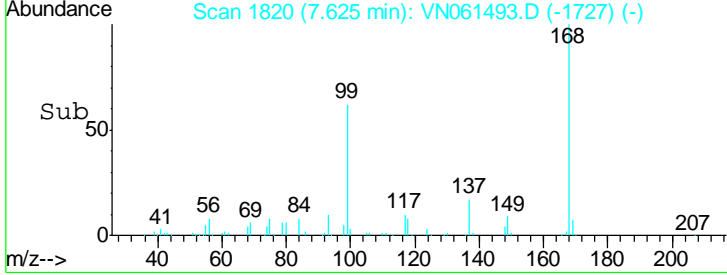
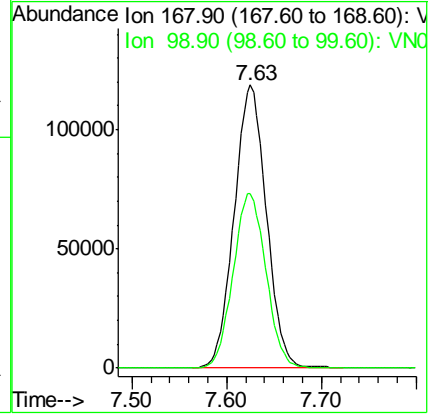
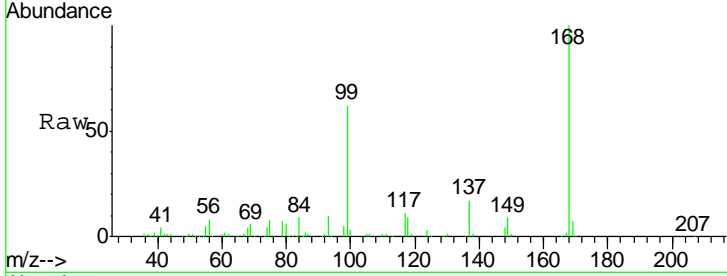




#1
 Pentafluorobenzene
 Concen: 50.000 ug/l
 RT: 7.63 min Scan# 1820
 Delta R.T. -0.00 min
 Lab File: VN061493.D
 Acq: 19 May 2020 19:04

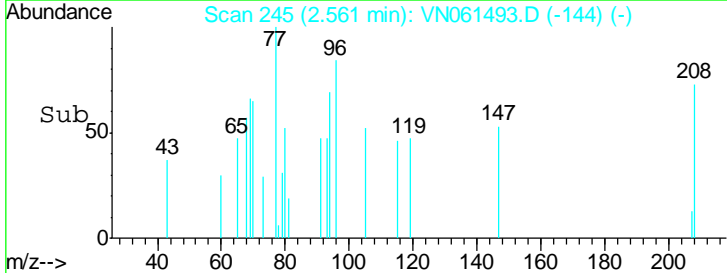
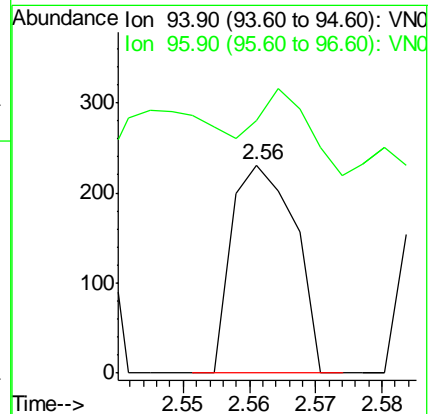
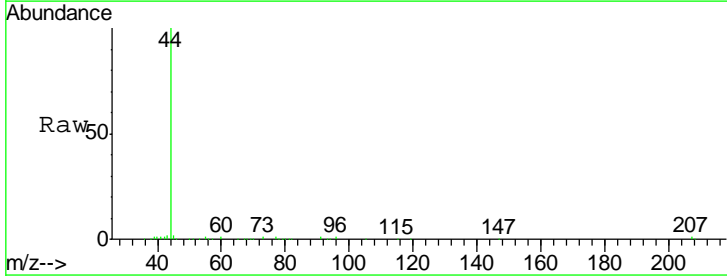
Instrument :
 MSVOA_N
 ClientSampled :
 MW-3DL

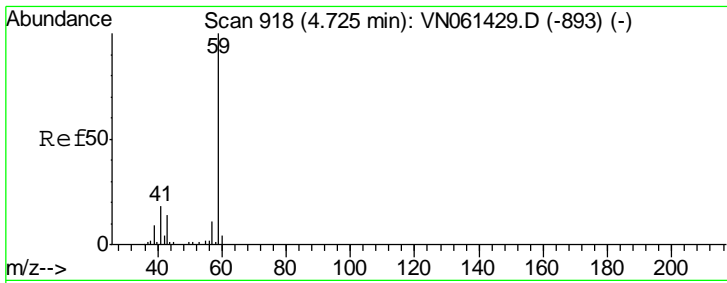
Tgt Ion	Resp	Lower	Upper
168	100		
99	61.8	51.1	76.7



#5
 Bromomethane
 Concen: Below Cal
 RT: 2.56 min Scan# 245
 Delta R.T. 0.03 min
 Lab File: VN061493.D
 Acq: 19 May 2020 19:04

Tgt Ion	Resp	Lower	Upper
94	100		
96	26.4	74.9	112.3#

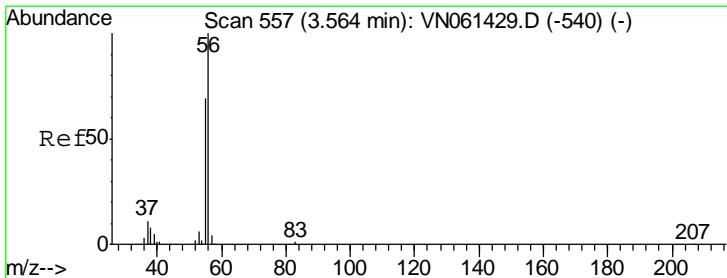
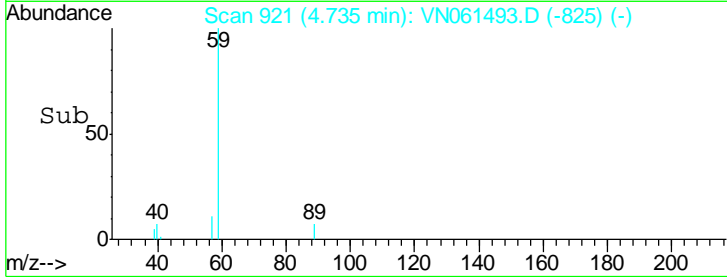
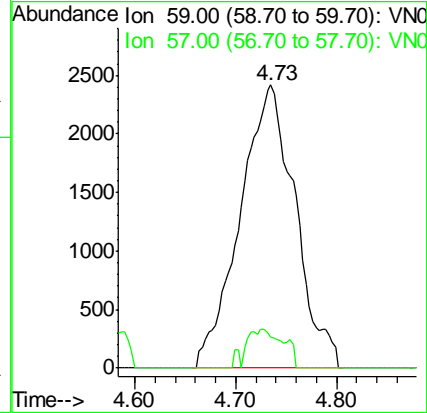
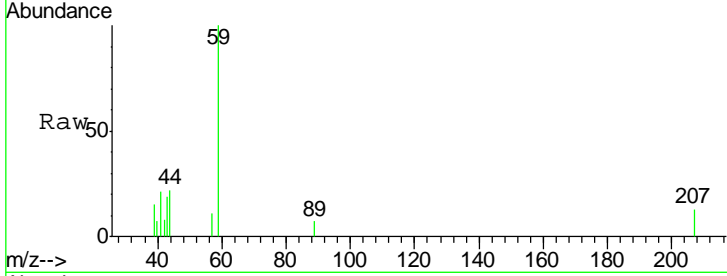




#11
 Tert butyl alcohol
 Concen: 19.035 ug/l
 RT: 4.73 min Scan# 921
 Delta R.T. 0.01 min
 Lab File: VN061493.D
 Acq: 19 May 2020 19:04

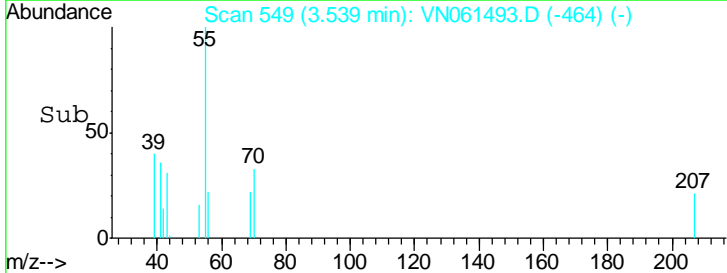
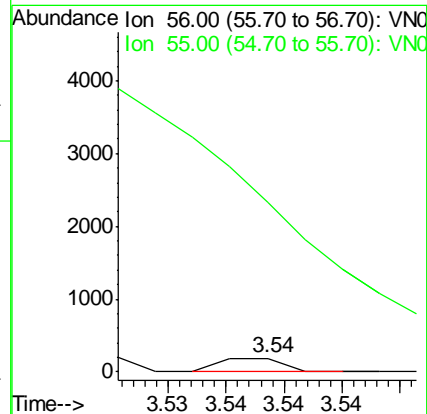
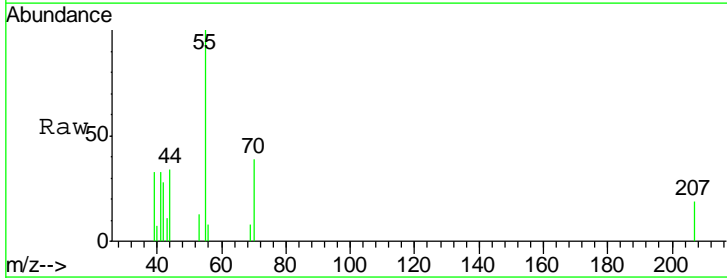
Instrument :
 MSVOA_N
 ClientSampled :
 MW-3DL

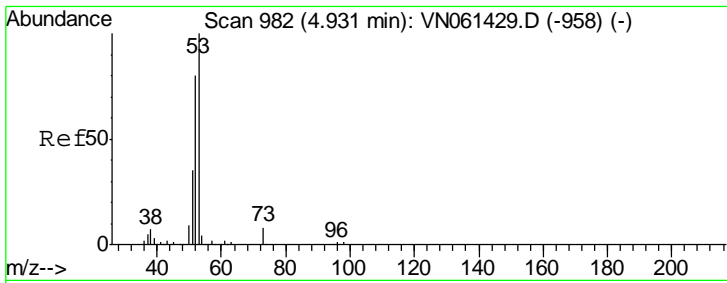
Tgt Ion: 59 Resp: 9191
 Ion Ratio Lower Upper
 59 100
 57 0.0 8.2 12.2#



#13
 Acrolein
 Concen: Below Cal
 RT: 3.54 min Scan# 549
 Delta R.T. -0.03 min
 Lab File: VN061493.D
 Acq: 19 May 2020 19:04

Tgt Ion: 56 Resp: 69
 Ion Ratio Lower Upper
 56 100
 55 0.0 54.8 82.2#

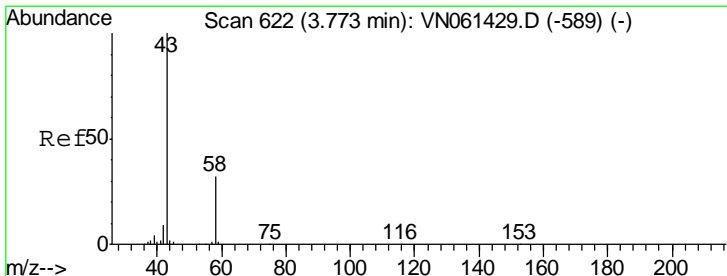
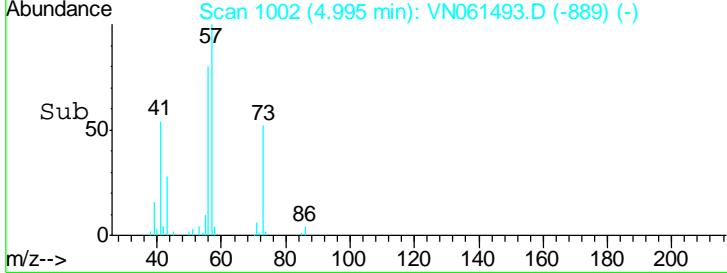
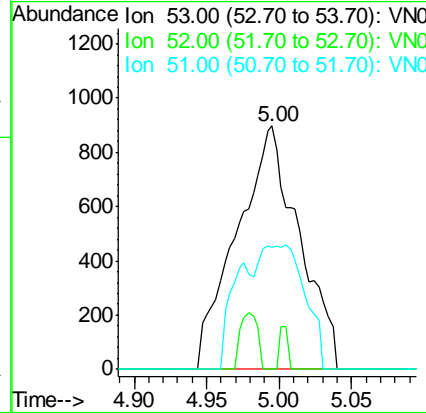
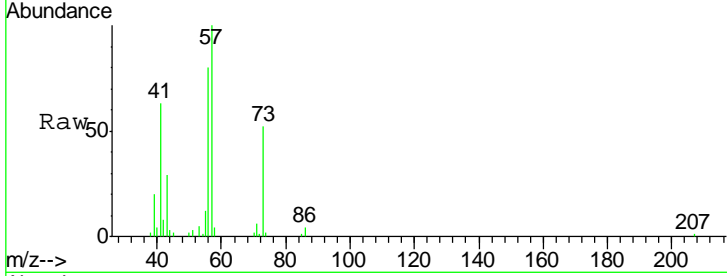




#15
 Acrylonitrile
 Concen: 1.873 ug/l
 RT: 5.00 min Scan# 1002
 Delta R.T. 0.06 min
 Lab File: VN061493.D
 Acq: 19 May 2020 19:04

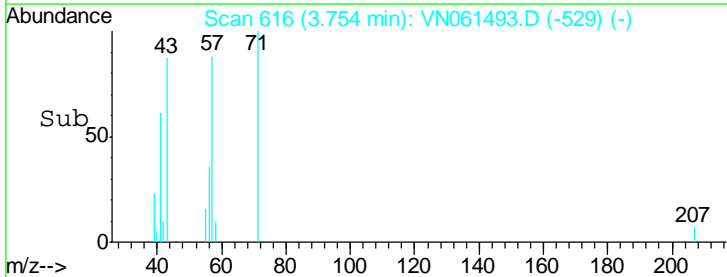
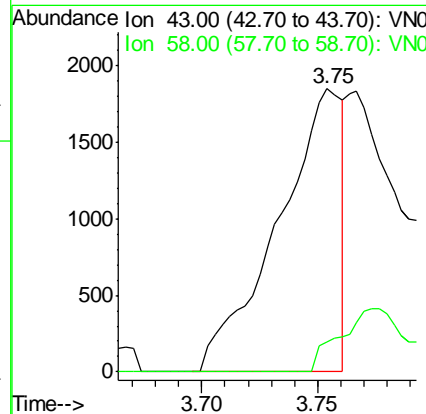
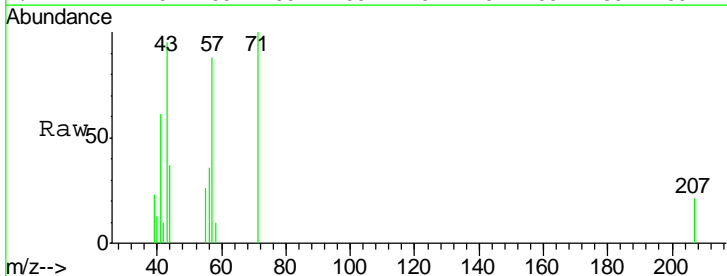
Instrument :
 MSVOA_N
ClientSampled :
 MW-3DL

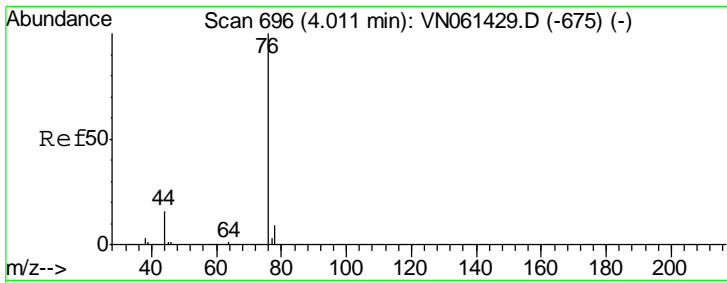
Tgt Ion	Resp	Lower	Upper
53	100		
52	2.3	64.7	97.1#
51	37.2	29.5	44.3



#16
 Acetone
 Concen: Below Cal
 RT: 3.75 min Scan# 616
 Delta R.T. -0.02 min
 Lab File: VN061493.D
 Acq: 19 May 2020 19:04

Tgt Ion	Resp	Lower	Upper
43	100		
58	10.7	25.6	38.4#

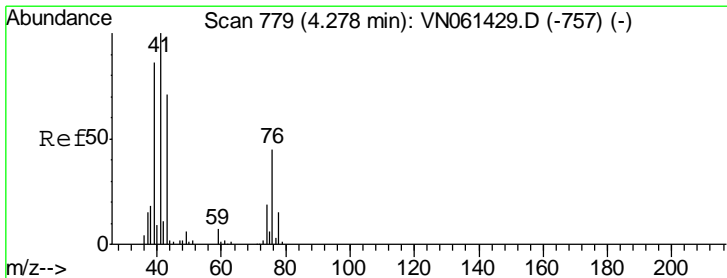
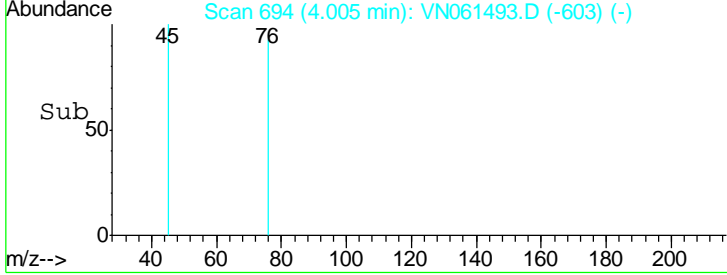
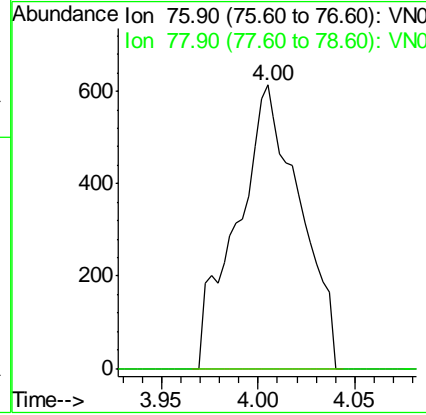
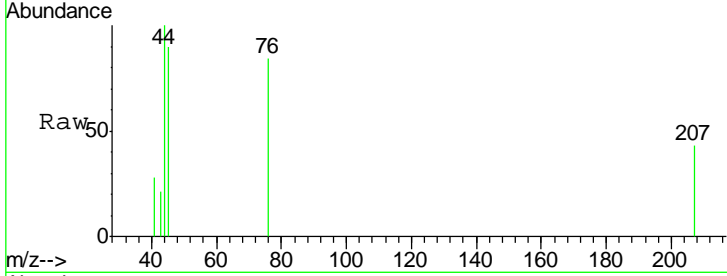




#17
 Carbon Disulfide
 Concen: Below Cal
 RT: 4.00 min Scan# 694
 Delta R.T. -0.01 min
 Lab File: VN061493.D
 Acq: 19 May 2020 19:04

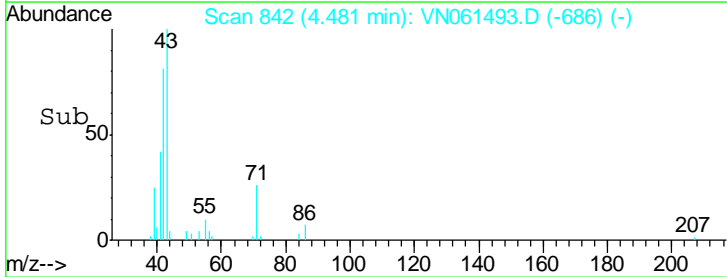
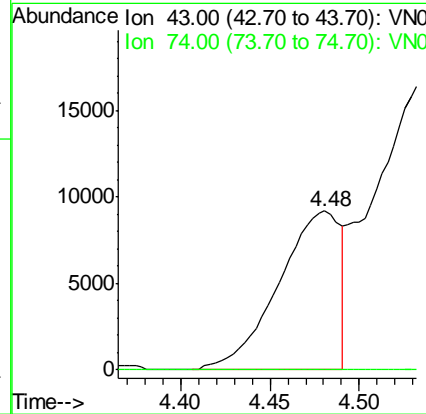
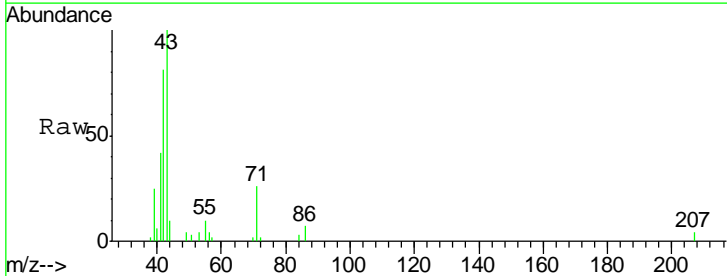
Instrument :
 MSVOA_N
 ClientSampled :
 MW-3DL

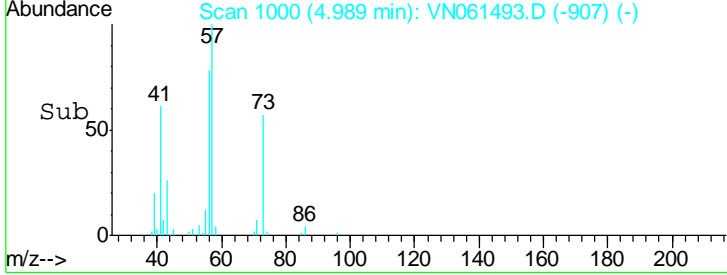
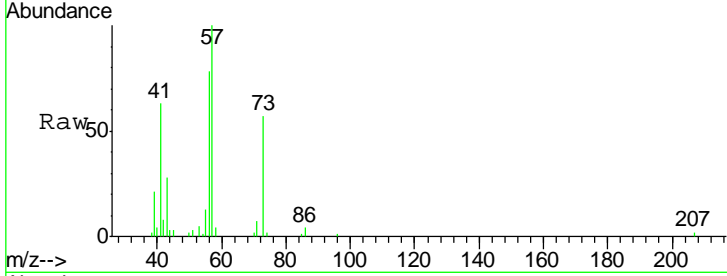
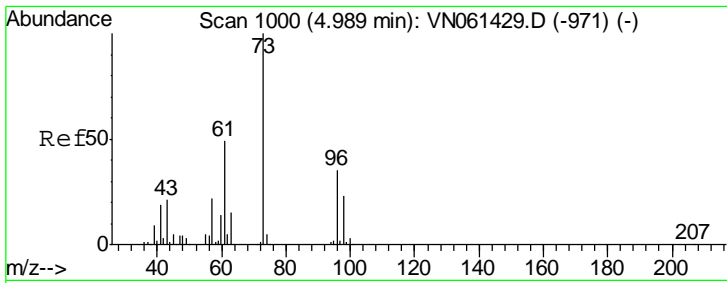
Tgt Ion: 76 Resp: 1391
 Ion Ratio Lower Upper
 76 100
 78 0.0 7.4 11.0#



#18
 Methyl Acetate
 Concen: 6.803 ug/l
 RT: 4.48 min Scan# 842
 Delta R.T. 0.20 min
 Lab File: VN061493.D
 Acq: 19 May 2020 19:04

Tgt Ion: 43 Resp: 22209
 Ion Ratio Lower Upper
 43 100
 74 0.0 20.8 31.2#

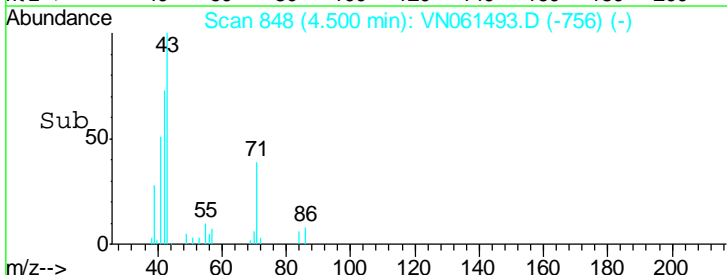
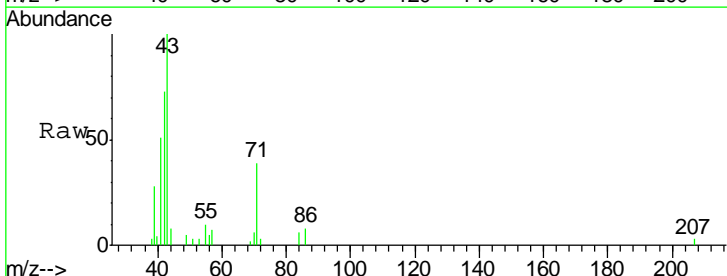
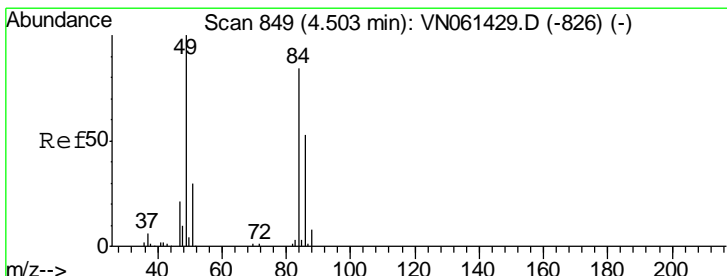
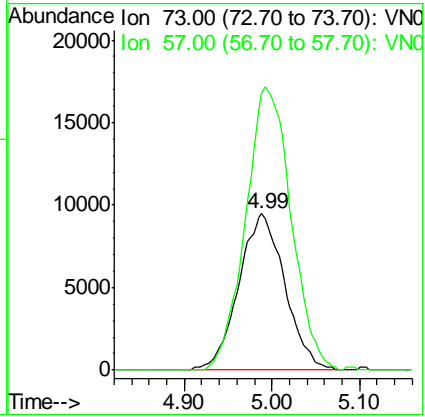




#19
 Methyl tert-butyl Ether
 Concen: 3.168 ug/l
 RT: 4.99 min Scan# 1000
 Delta R.T. -0.00 min
 Lab File: VN061493.D
 Acq: 19 May 2020 19:04

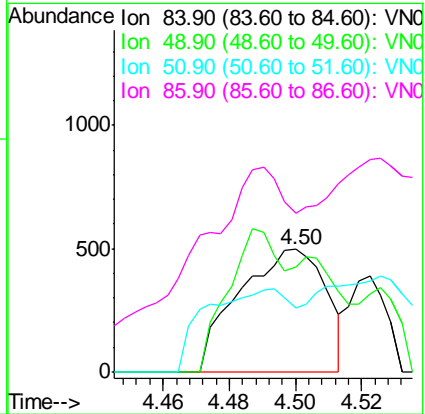
Instrument :
 MSVOA_N
 ClientSampled :
 MW-3DL

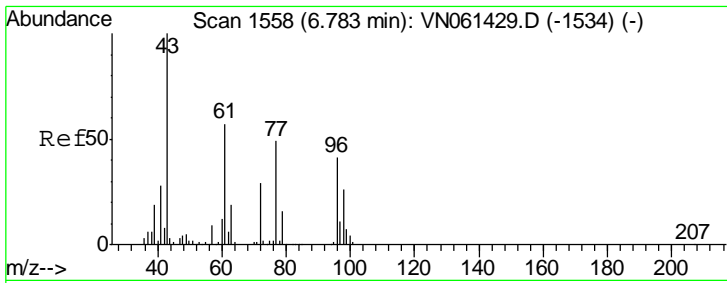
Tgt Ion	Resp	Lower	Upper
73	100		
57	176.7	17.4	26.0#



#20
 Methylene Chloride
 Concen: 0.264 ug/l
 RT: 4.50 min Scan# 848
 Delta R.T. -0.00 min
 Lab File: VN061493.D
 Acq: 19 May 2020 19:04

Tgt Ion	Resp	Lower	Upper
84	100		
49	85.7	95.3	142.9#
51	15.5	29.0	43.6#
86	34.5	50.2	75.2#

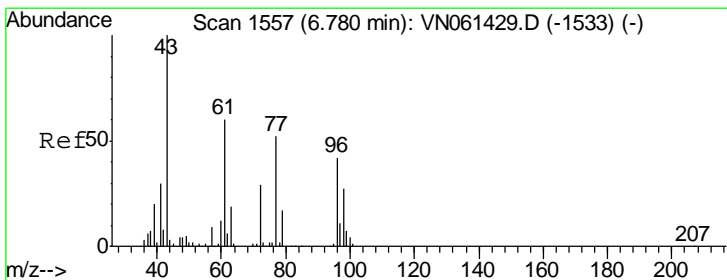
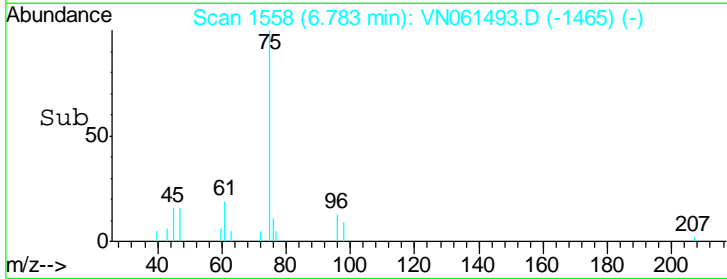
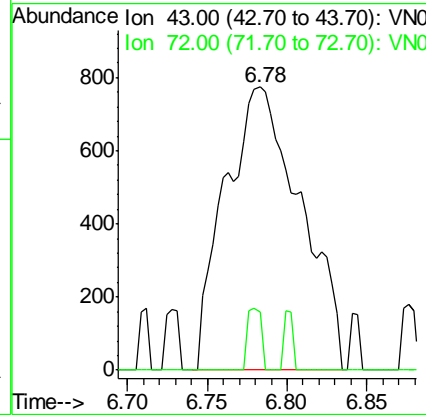
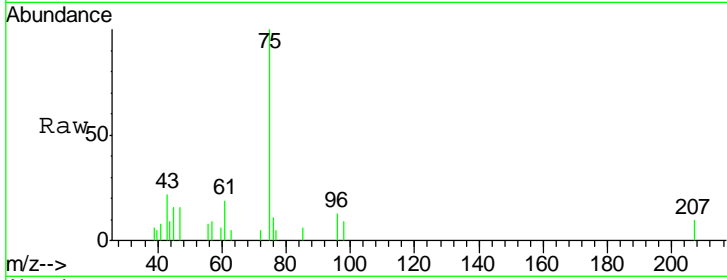




#25
 2-Butanone
 Concen: 1.319 ug/l
 RT: 6.78 min Scan# 1558
 Delta R.T. -0.00 min
 Lab File: VN061493.D
 Acq: 19 May 2020 19:04

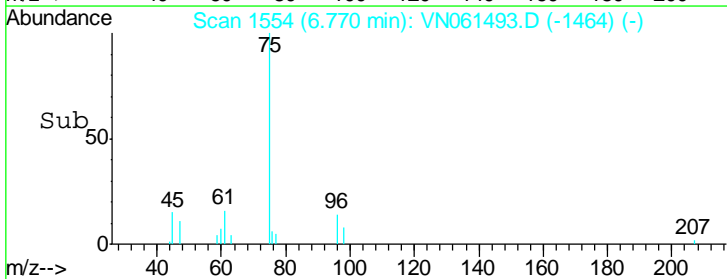
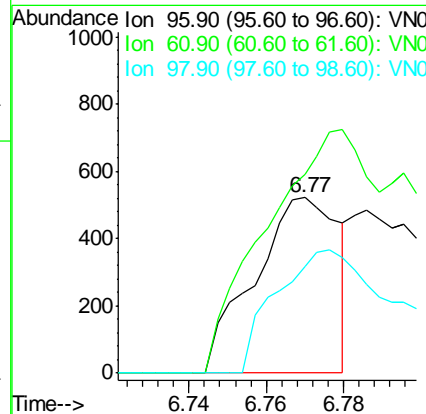
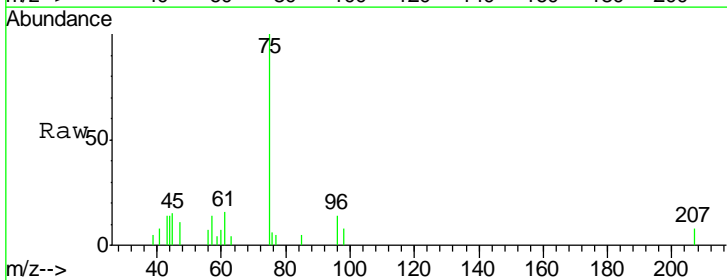
Instrument :
 MSVOA_N
 ClientSampled :
 MW-3DL

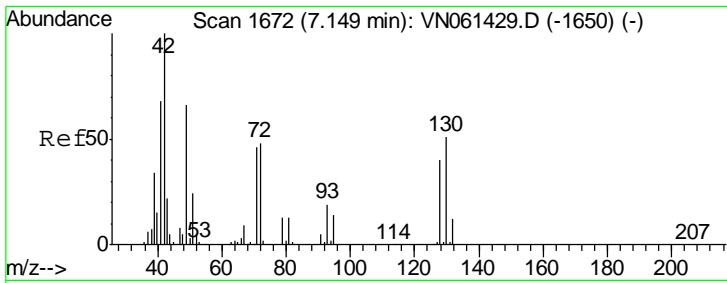
Tgt Ion: 43 Resp: 2516
 Ion Ratio Lower Upper
 43 100
 72 20.7 23.0 34.6#



#27
 cis-1,2-Dichloroethene
 Concen: 0.201 ug/l
 RT: 6.77 min Scan# 1554
 Delta R.T. -0.01 min
 Lab File: VN061493.D
 Acq: 19 May 2020 19:04

Tgt Ion: 96 Resp: 787
 Ion Ratio Lower Upper
 96 100
 61 173.6 0.0 294.2
 98 94.5 0.0 128.2

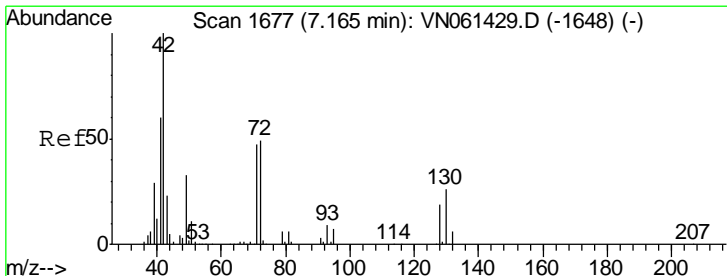
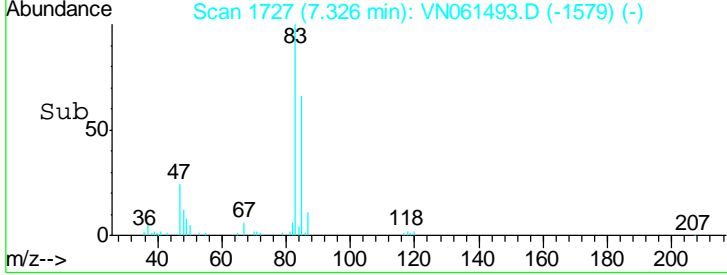
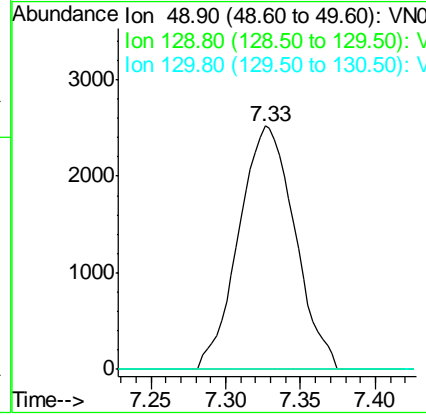
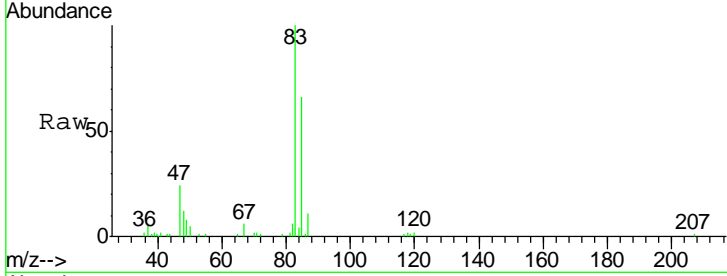




#28
 Bromochloromethane
 Concen: 2.512 ug/l
 RT: 7.33 min Scan# 1727
 Delta R.T. 0.18 min
 Lab File: VN061493.D
 Acq: 19 May 2020 19:04

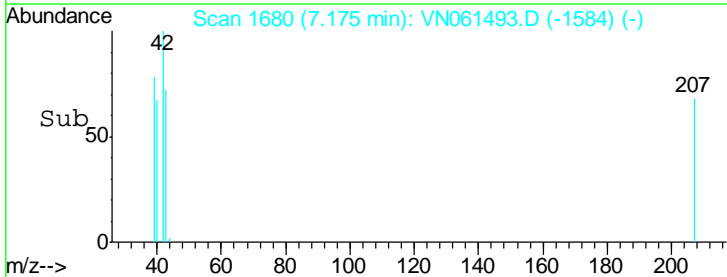
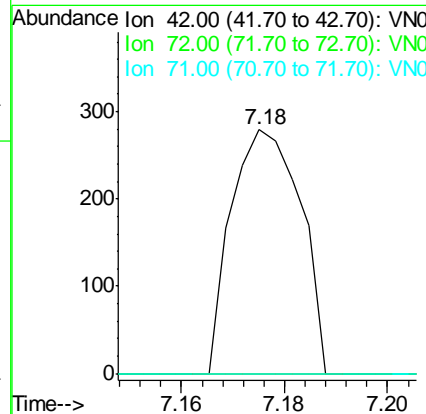
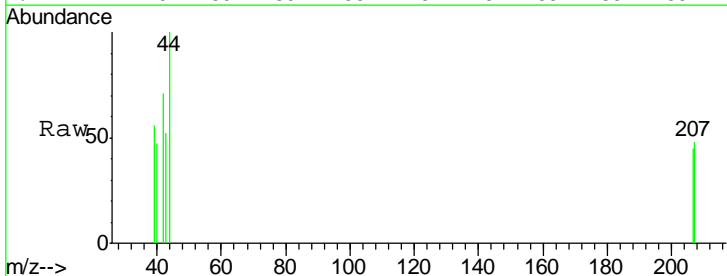
Instrument : MSVOA_N
 ClientSampled : MW-3DL

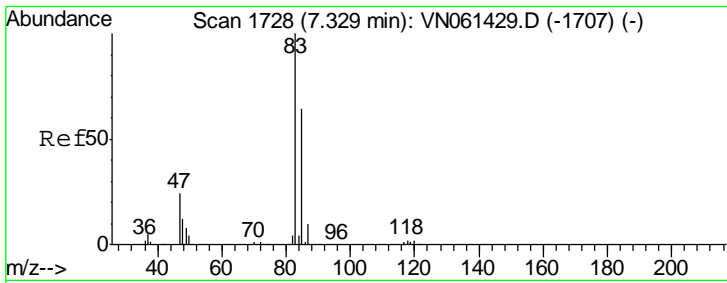
Tgt Ion	Resp	Lower	Upper
49	100		
129	0.0	0.0	4.6
130	0.0	62.2	93.2#



#29
 Tetrahydrofuran
 Concen: 0.205 ug/l
 RT: 7.18 min Scan# 1680
 Delta R.T. 0.01 min
 Lab File: VN061493.D
 Acq: 19 May 2020 19:04

Tgt Ion	Resp	Lower	Upper
42	100		
72	0.0	39.0	58.6#
71	0.0	36.9	55.3#

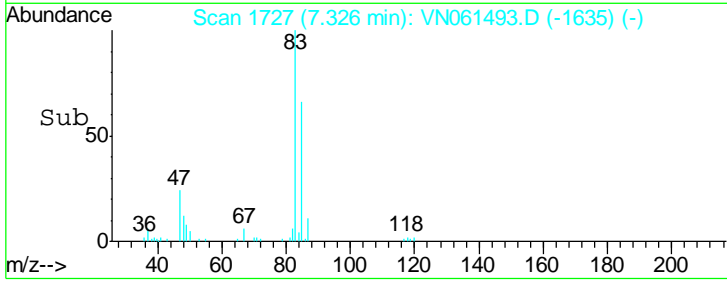
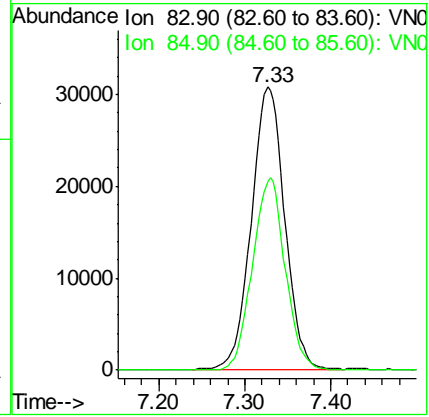
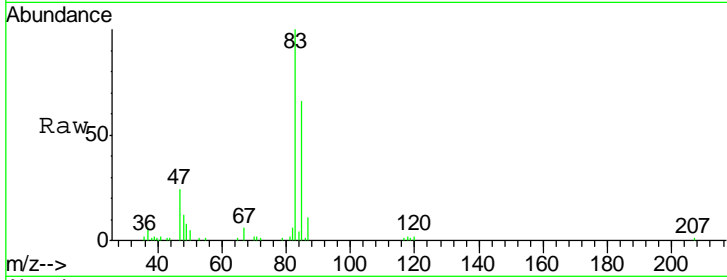




#30
 Chloroform
 Concen: 13.020 ug/l
 RT: 7.33 min Scan# 1727
 Delta R.T. -0.00 min
 Lab File: VN061493.D
 Acq: 19 May 2020 19:04

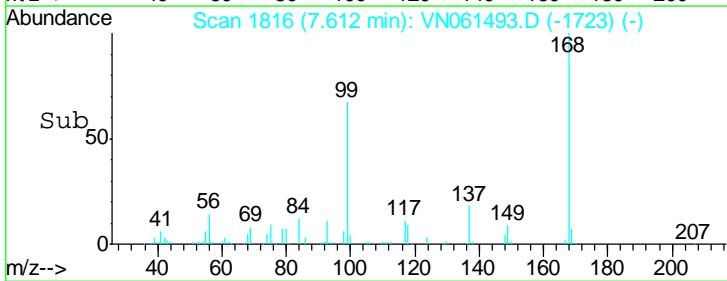
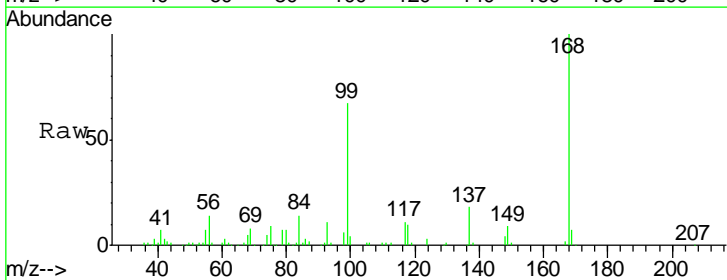
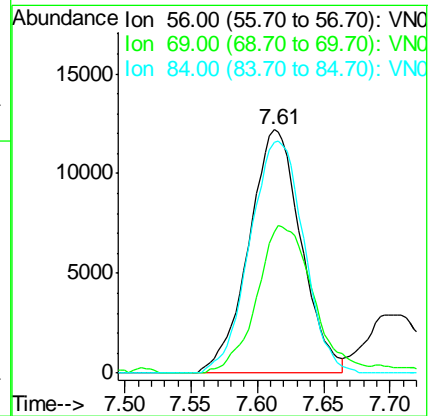
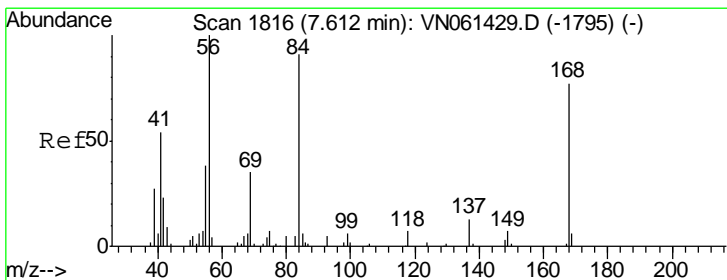
Instrument :
 MSVOA_N
ClientSampled :
 MW-3DL

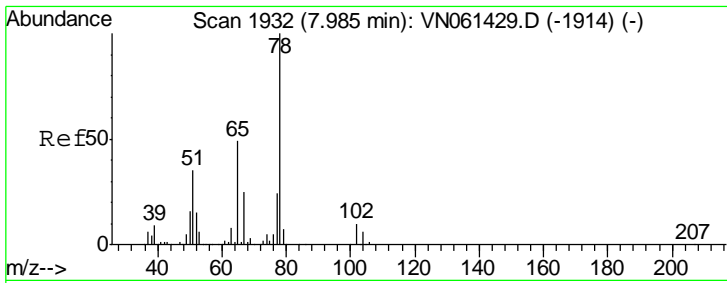
Tgt Ion	Resp	Lower	Upper
83	100		
85	66.5	51.0	76.4



#31
 Cyclohexane
 Concen: 3.434 ug/l
 RT: 7.61 min Scan# 1816
 Delta R.T. 0.00 min
 Lab File: VN061493.D
 Acq: 19 May 2020 19:04

Tgt Ion	Resp	Lower	Upper
56	100		
69	58.2	27.8	41.6#
84	94.6	72.7	109.1

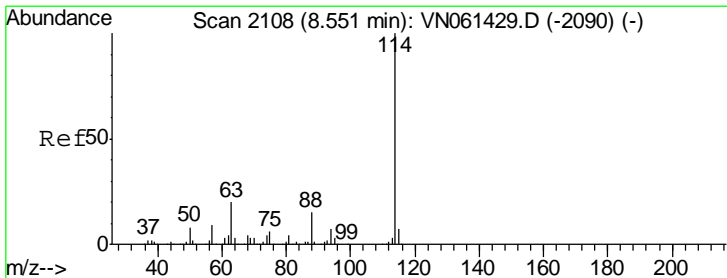
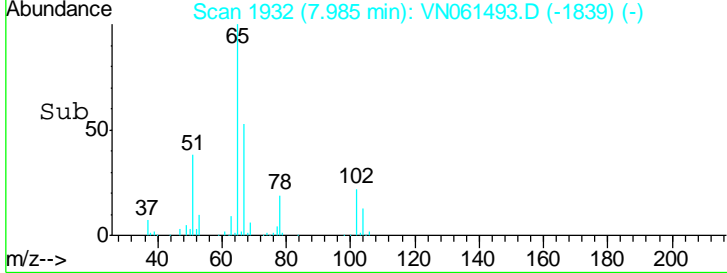
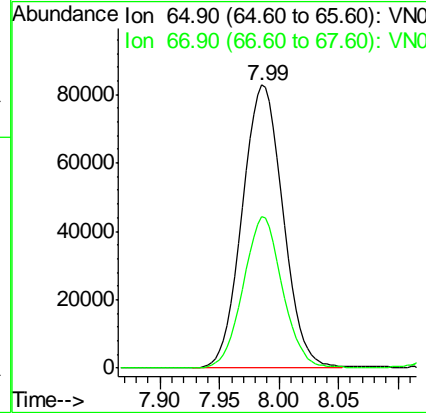
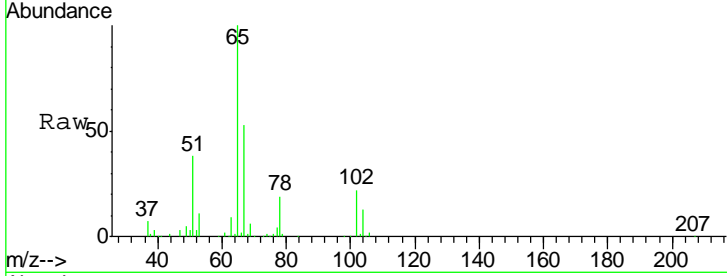




#33
 1,2-Dichloroethane-d4
 Concen: 47.025 ug/l
 RT: 7.99 min Scan# 1932
 Delta R.T. -0.00 min
 Lab File: VN061493.D
 Acq: 19 May 2020 19:04

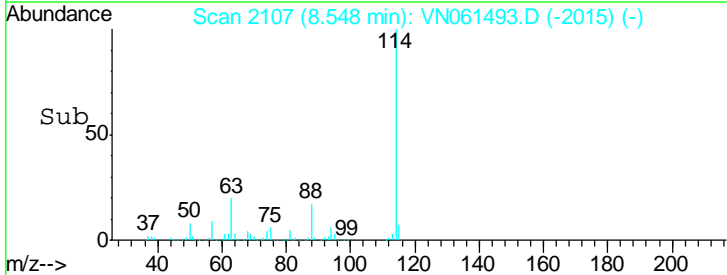
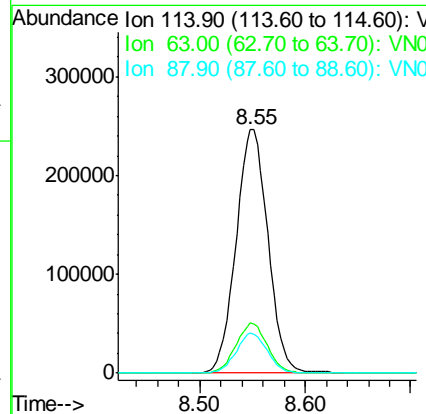
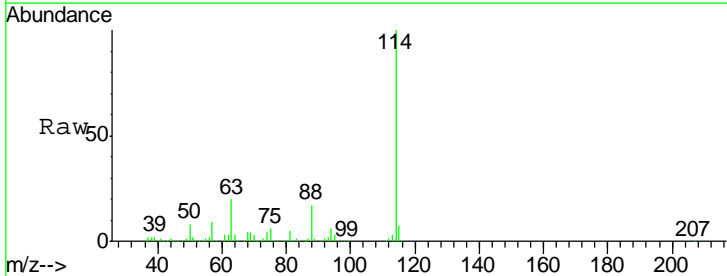
Instrument :
 MSVOA_N
ClientSampled :
 MW-3DL

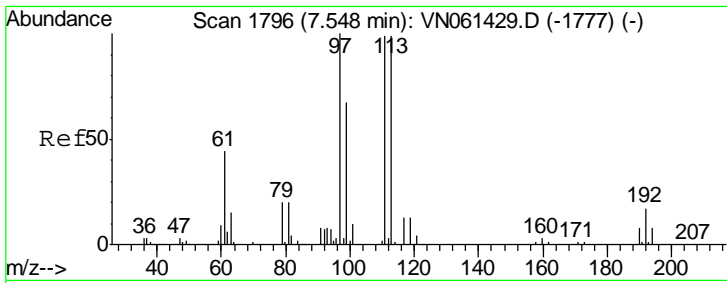
Tgt Ion	Resp	Lower	Upper
65	197061		
65	100		
67	51.3	0.0	101.4



#34
 1,4-Difluorobenzene
 Concen: 50.000 ug/l
 RT: 8.55 min Scan# 2107
 Delta R.T. -0.00 min
 Lab File: VN061493.D
 Acq: 19 May 2020 19:04

Tgt Ion	Resp	Lower	Upper
114	516390		
114	100		
63	20.5	0.0	40.8
88	16.5	0.0	30.8

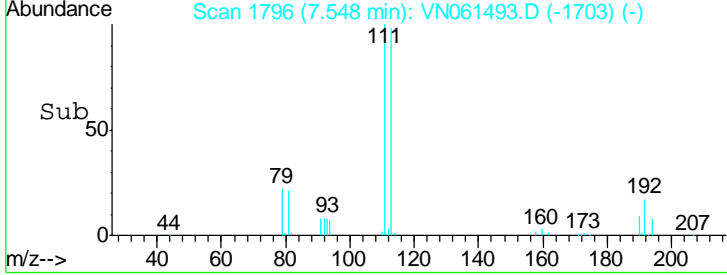
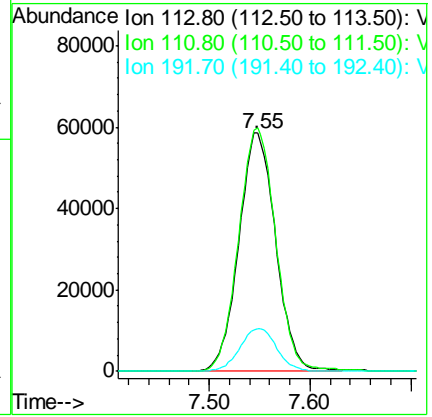
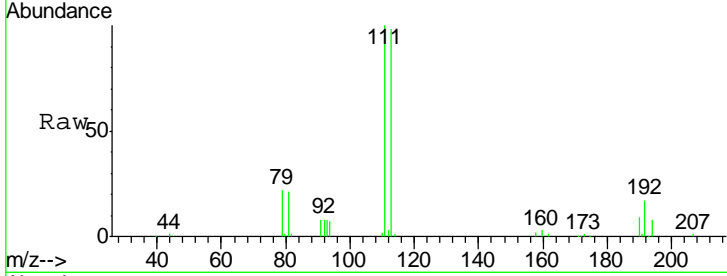




#35
 Dibromofluoromethane
 Concen: 54.890 ug/l
 RT: 7.55 min Scan# 1796
 Delta R.T. -0.00 min
 Lab File: VN061493.D
 Acq: 19 May 2020 19:04

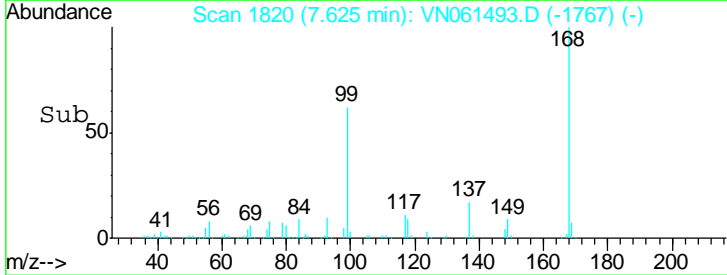
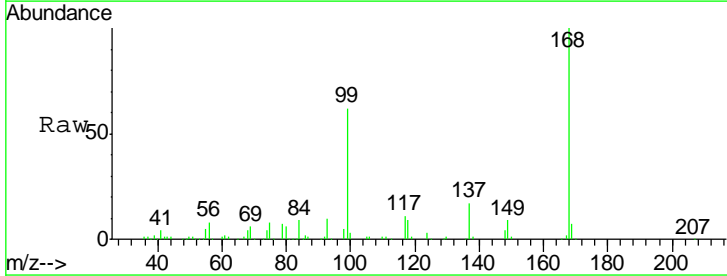
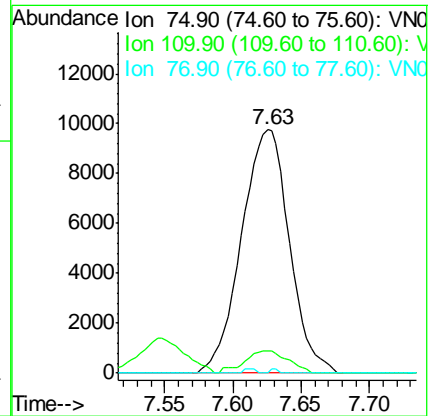
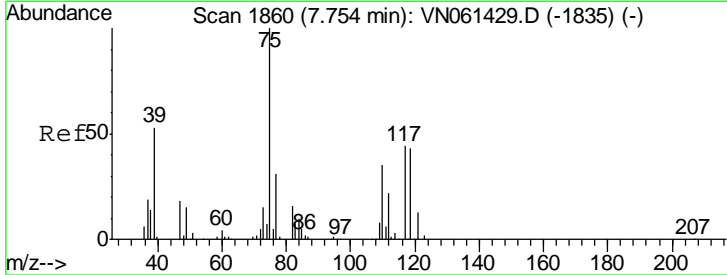
Instrument : MSVOA_N
 ClientSampled : MW-3DL

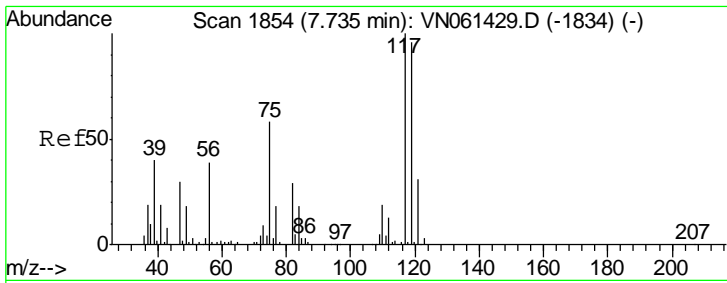
Tgt Ion	Resp	Lower	Upper
113	148490		
111	102.2	80.6	121.0
192	17.9	13.2	19.8



#36
 1,1-Dichloropropene
 Concen: 4.916 ug/l
 RT: 7.63 min Scan# 1820
 Delta R.T. -0.13 min
 Lab File: VN061493.D
 Acq: 19 May 2020 19:04

Tgt Ion	Resp	Lower	Upper
75	23735		
110	8.3	17.3	51.9#
77	0.0	24.9	37.3#

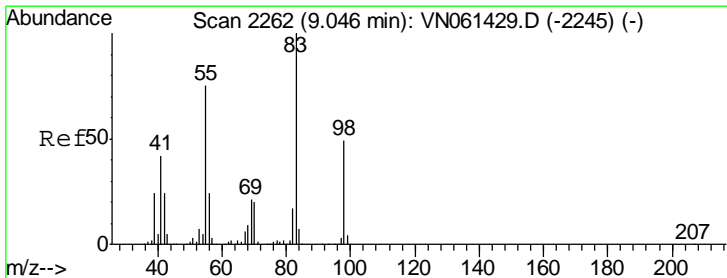
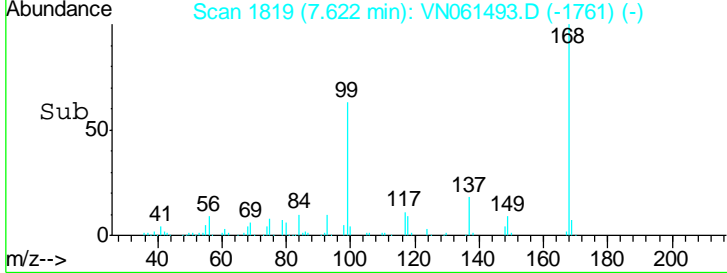
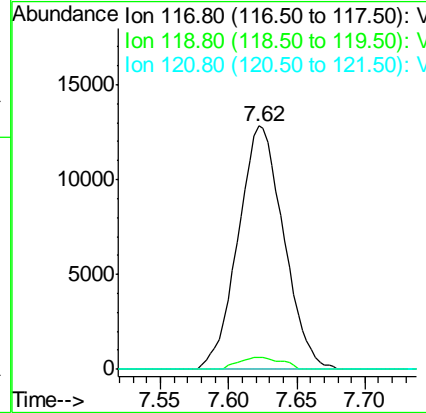
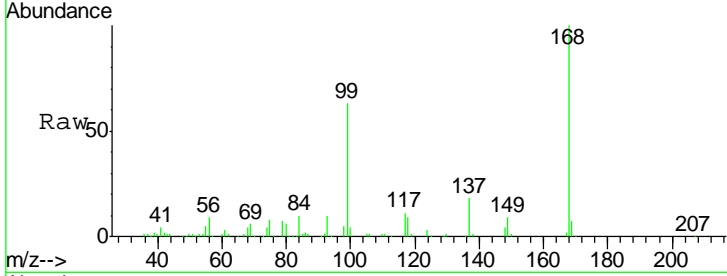




#38
 Carbon Tetrachloride
 Concen: 6.676 ug/l
 RT: 7.62 min Scan# 1819
 Delta R.T. -0.11 min
 Lab File: VN061493.D
 Acq: 19 May 2020 19:04

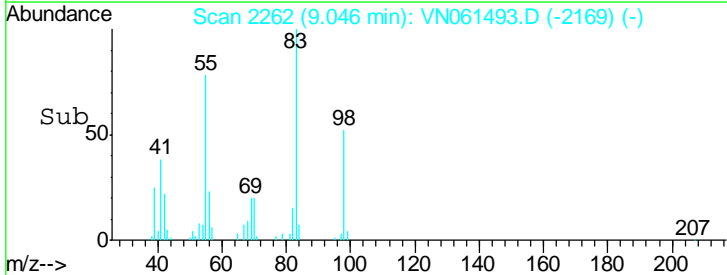
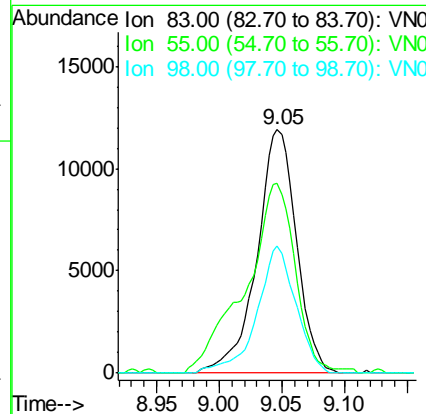
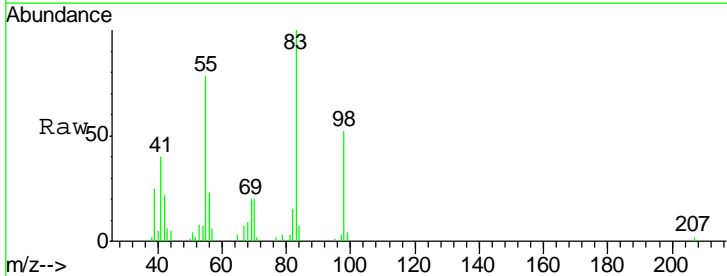
Instrument :
 MSVOA_N
 ClientSampled :
 MW-3DL

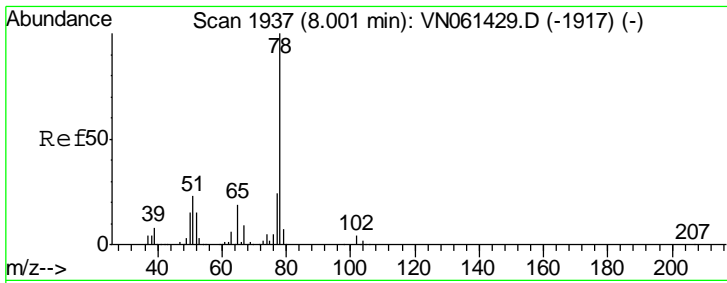
Tgt Ion	Resp	Lower	Upper
117	100		
119	4.9	77.0	115.6#
121	0.0	24.7	37.1#



#39
 Methylcyclohexane
 Concen: 4.431 ug/l
 RT: 9.05 min Scan# 2262
 Delta R.T. -0.00 min
 Lab File: VN061493.D
 Acq: 19 May 2020 19:04

Tgt Ion	Resp	Lower	Upper
83	100		
55	76.0	59.7	89.5
98	52.2	38.9	58.3

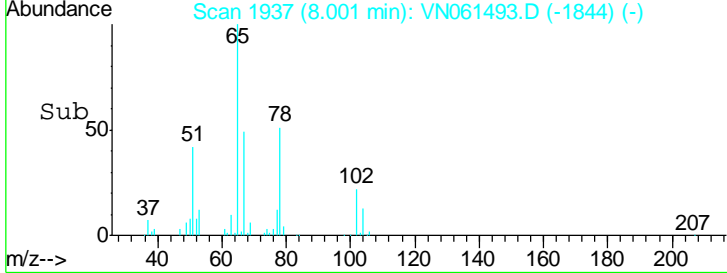
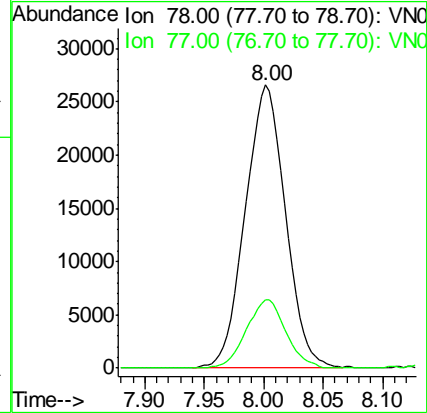
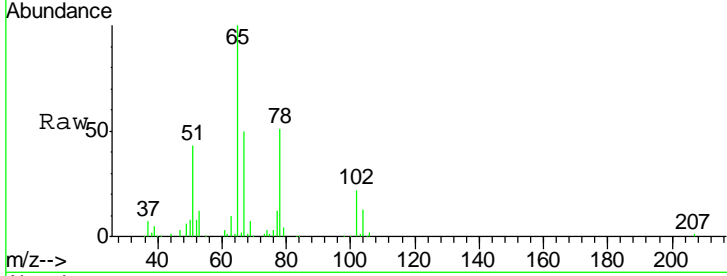




#40
Benzene
Concen: 4.280 ug/l
RT: 8.00 min Scan# 1937
Delta R.T. -0.00 min
Lab File: VN061493.D
Acq: 19 May 2020 19:04

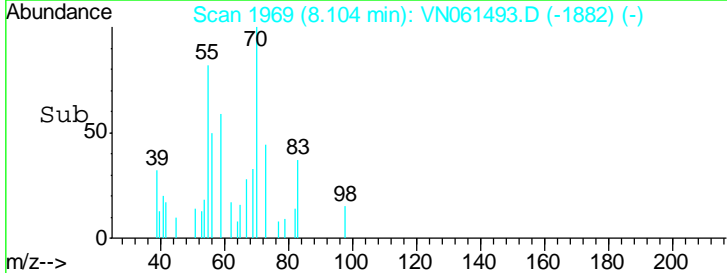
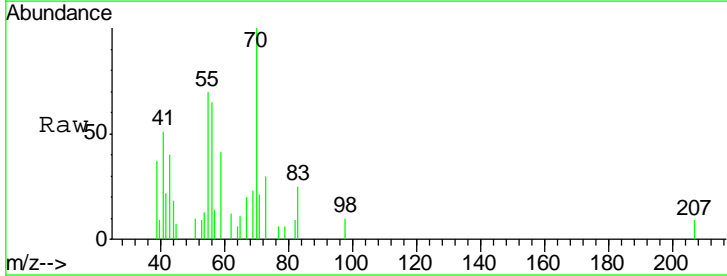
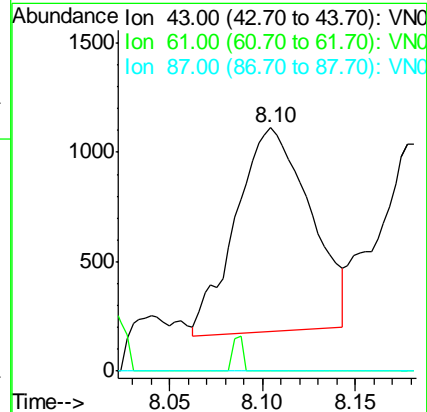
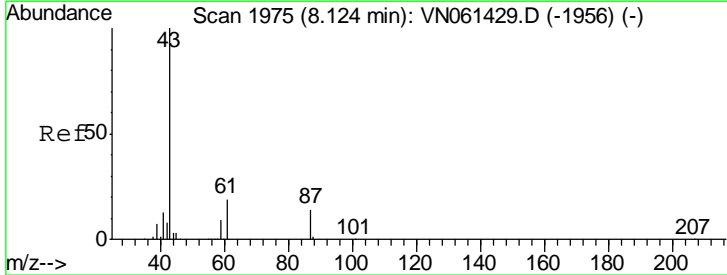
Instrument :
MSVOA_N
ClientSampled :
MW-3DL

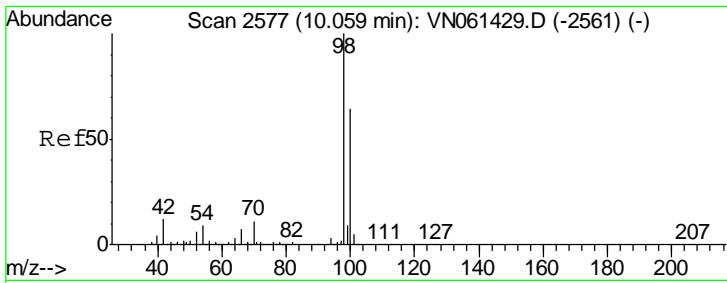
Tgt Ion	Resp	Lower	Upper
78	100		
77	24.1	19.1	28.7



#43
Isopropyl Acetate
Concen: 0.340 ug/l
RT: 8.10 min Scan# 1969
Delta R.T. -0.02 min
Lab File: VN061493.D
Acq: 19 May 2020 19:04

Tgt Ion	Resp	Lower	Upper
43	100		
61	0.0	23.0	34.4#
87	0.0	11.6	17.4#

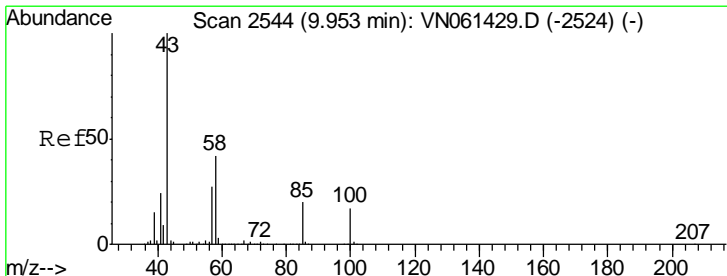
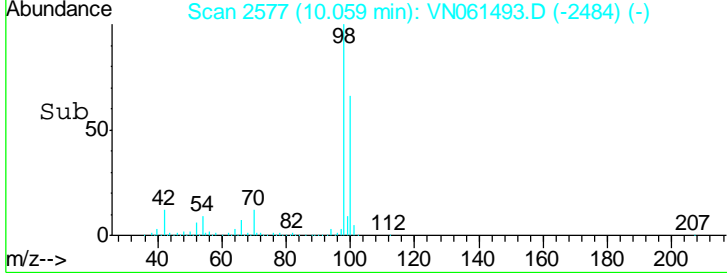
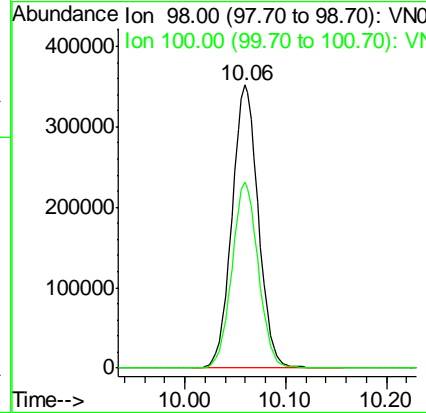
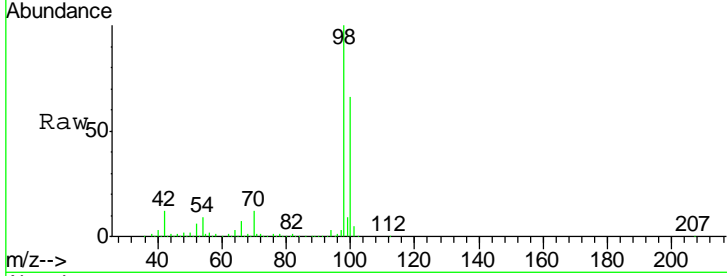




#50
 Toluene-d8
 Concen: 51.071 ug/l
 RT: 10.06 min Scan# 2577
 Delta R.T. -0.00 min
 Lab File: VN061493.D
 Acq: 19 May 2020 19:04

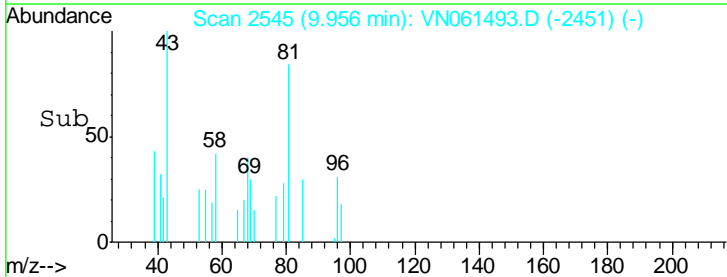
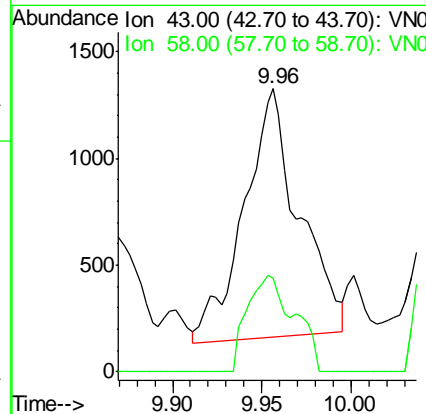
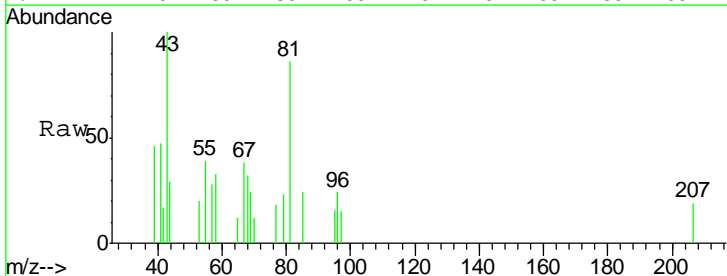
Instrument :
 MSVOA_N
 ClientSampled :
 MW-3DL

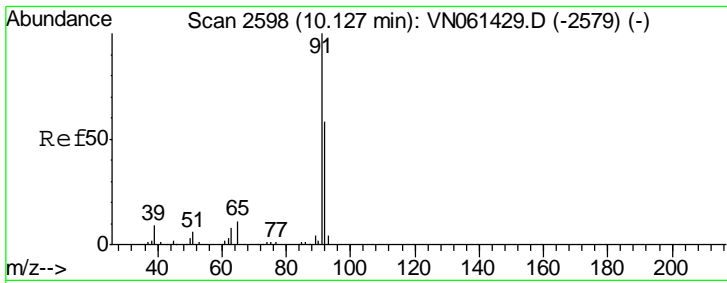
Tgt Ion: 98 Resp: 640815
 Ion Ratio Lower Upper
 98 100
 100 65.7 51.8 77.8



#51
 4-Methyl-2-Pentanone
 Concen: 0.602 ug/l
 RT: 9.96 min Scan# 2545
 Delta R.T. 0.00 min
 Lab File: VN061493.D
 Acq: 19 May 2020 19:04

Tgt Ion: 43 Resp: 2504
 Ion Ratio Lower Upper
 43 100
 58 33.3 33.4 50.2#

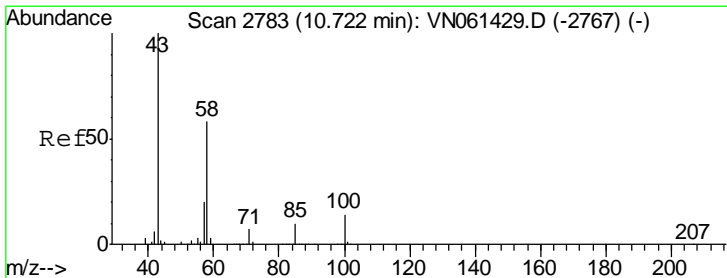
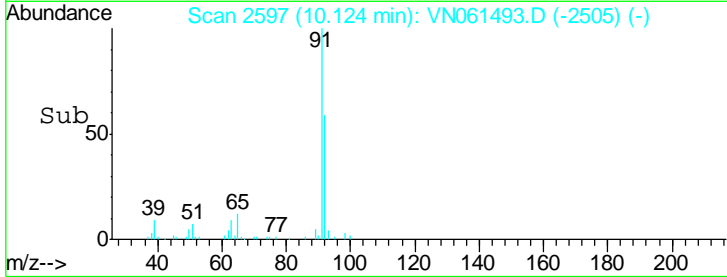
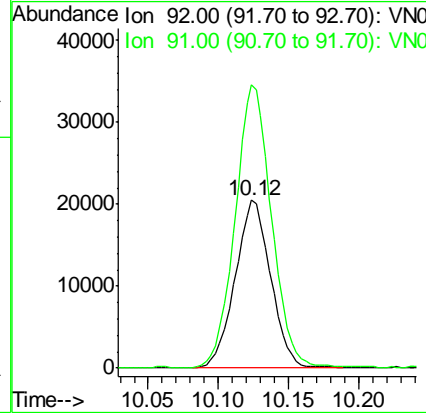
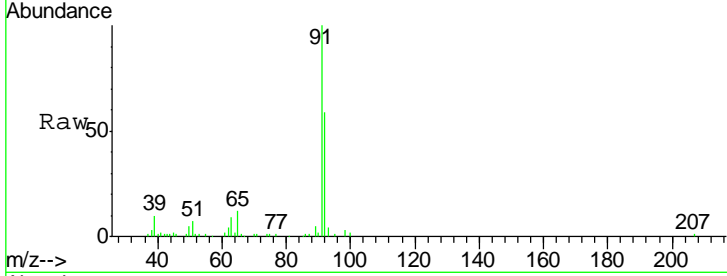




#52
 Toluene
 Concen: 3.873 ug/l
 RT: 10.12 min Scan# 2597
 Delta R.T. -0.00 min
 Lab File: VN061493.D
 Acq: 19 May 2020 19:04

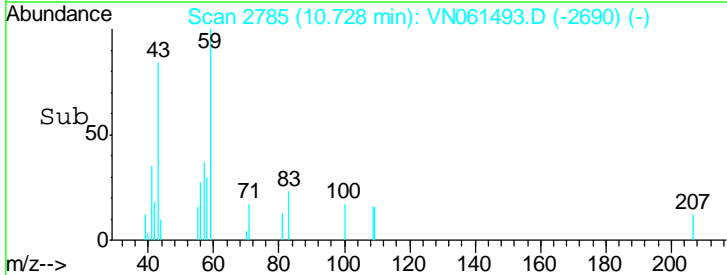
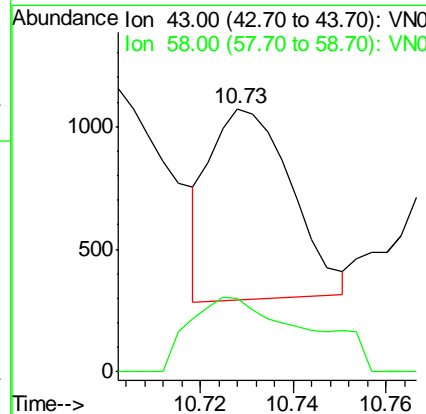
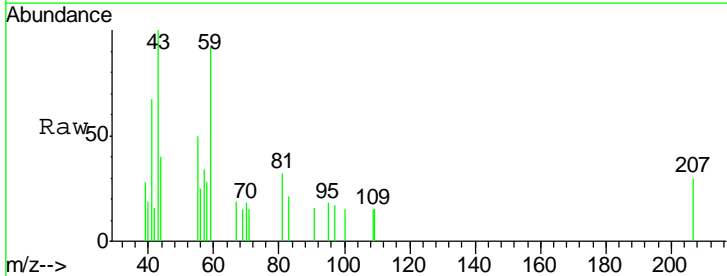
Instrument :
 MSVOA_N
 ClientSampled :
 MW-3DL

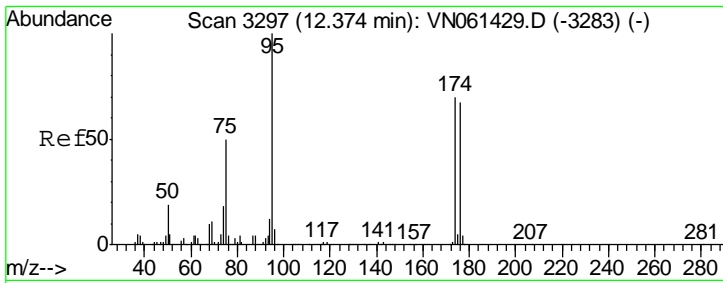
Tgt Ion: 92 Resp: 36183
 Ion Ratio Lower Upper
 92 100
 91 173.3 138.0 207.0



#59
 2-Hexanone
 Concen: 0.315 ug/l
 RT: 10.73 min Scan# 2785
 Delta R.T. 0.01 min
 Lab File: VN061493.D
 Acq: 19 May 2020 19:04

Tgt Ion: 43 Resp: 947
 Ion Ratio Lower Upper
 43 100
 58 56.5 29.2 87.6

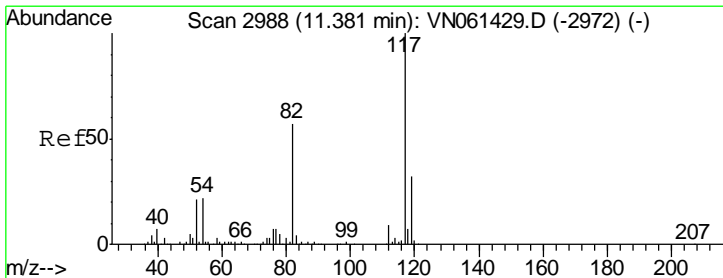
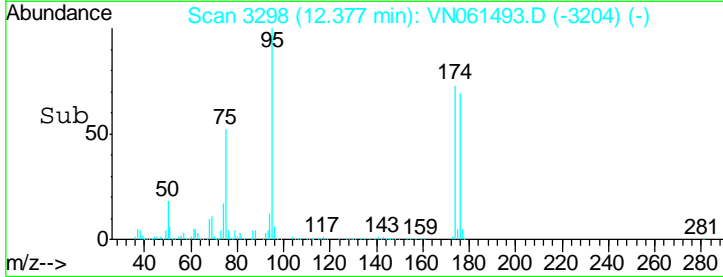
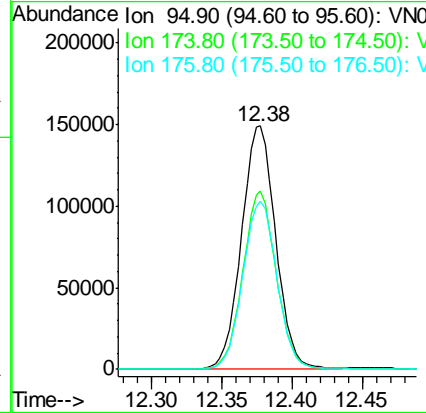
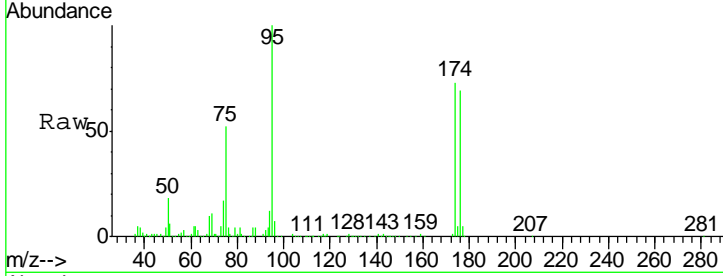




#62
 4-Bromofluorobenzene
 Concen: 53.695 ug/l
 RT: 12.38 min Scan# 3298
 Delta R.T. 0.00 min
 Lab File: VN061493.D
 Acq: 19 May 2020 19:04

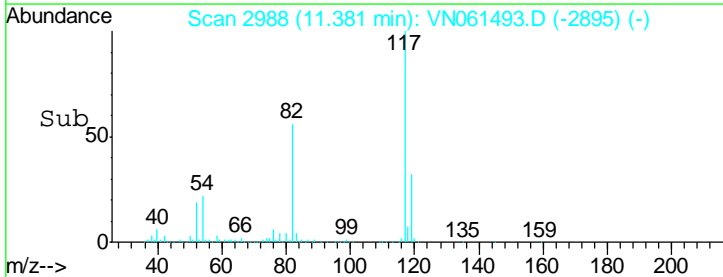
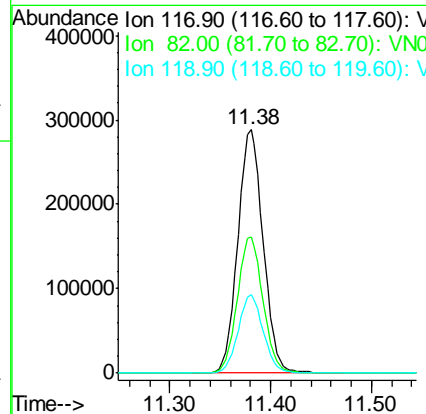
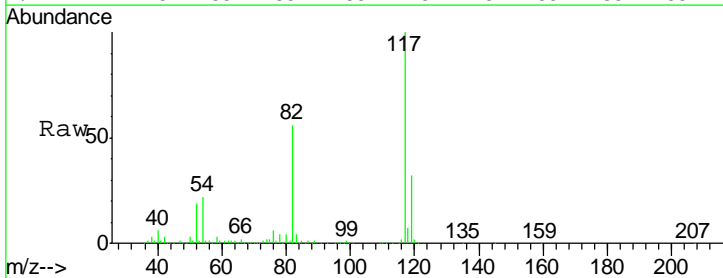
Instrument :
 MSVOA_N
 ClientSampled :
 MW-3DL

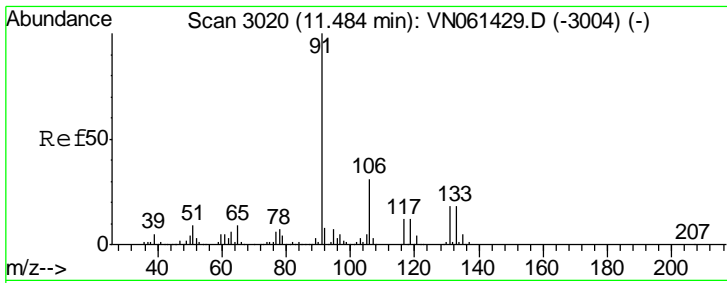
Tgt Ion	Resp	Lower	Upper
95	251715		
174	71.6	0.0	141.2
176	69.6	0.0	137.6



#63
 Chlorobenzene-d5
 Concen: 50.000 ug/l
 RT: 11.38 min Scan# 2988
 Delta R.T. -0.00 min
 Lab File: VN061493.D
 Acq: 19 May 2020 19:04

Tgt Ion	Resp	Lower	Upper
117	503818		
82	55.9	45.2	67.8
119	32.0	25.3	37.9

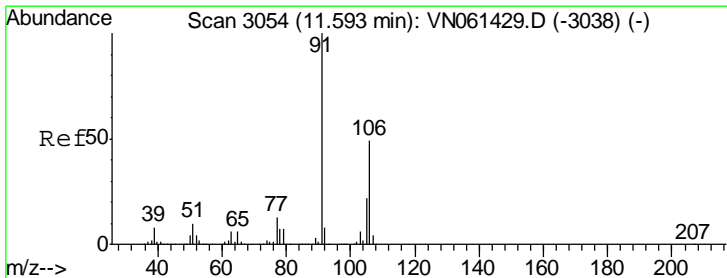
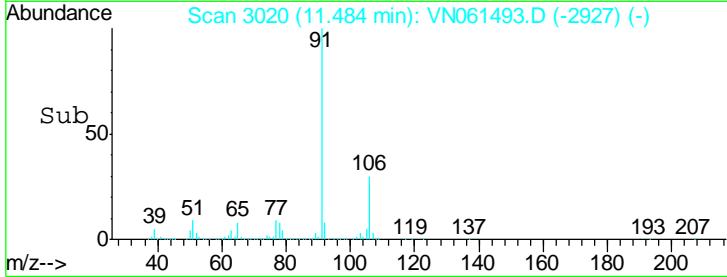
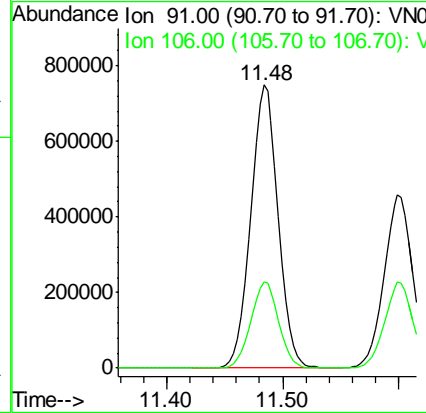
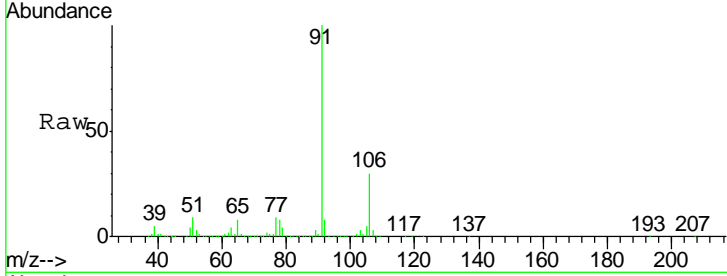




#67
 Ethyl Benzene
 Concen: 65.558 ug/l
 RT: 11.48 min Scan# 3020
 Delta R.T. -0.00 min
 Lab File: VN061493.D
 Acq: 19 May 2020 19:04

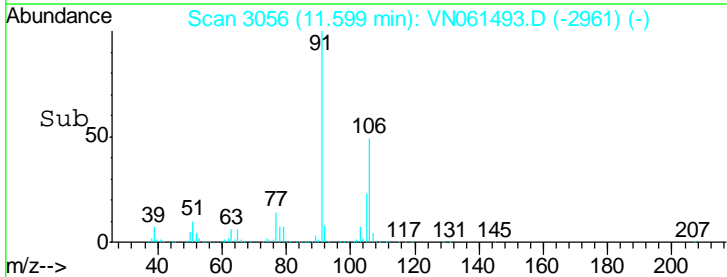
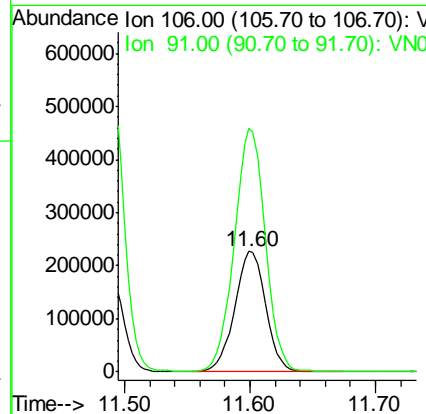
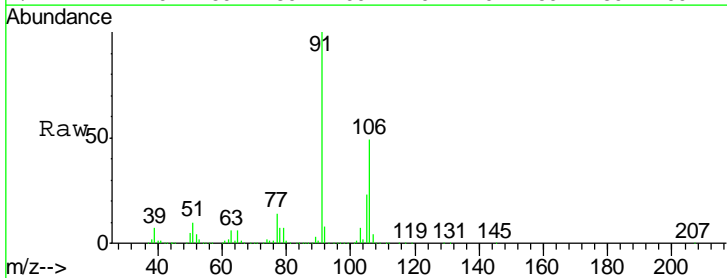
Instrument :
 MSVOA_N
 ClientSampled :
 MW-3DL

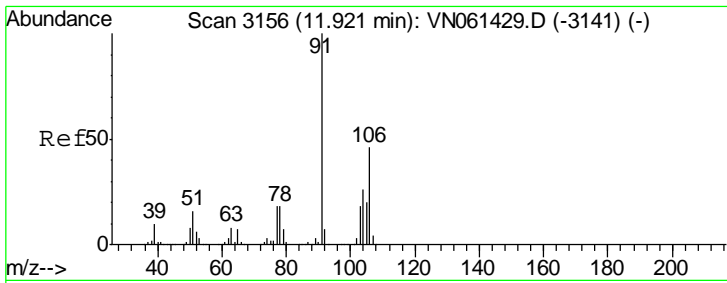
Tgt Ion: 91 Resp: 1229489
 Ion Ratio Lower Upper
 91 100
 106 30.5 24.6 36.8



#68
 m/p-Xylenes
 Concen: 54.520 ug/l
 RT: 11.60 min Scan# 3056
 Delta R.T. 0.01 min
 Lab File: VN061493.D
 Acq: 19 May 2020 19:04

Tgt Ion: 106 Resp: 388106
 Ion Ratio Lower Upper
 106 100
 91 203.0 163.0 244.6

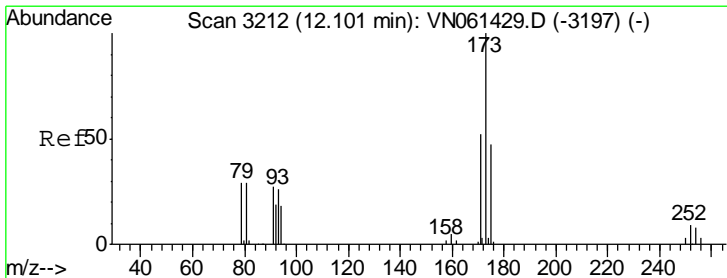
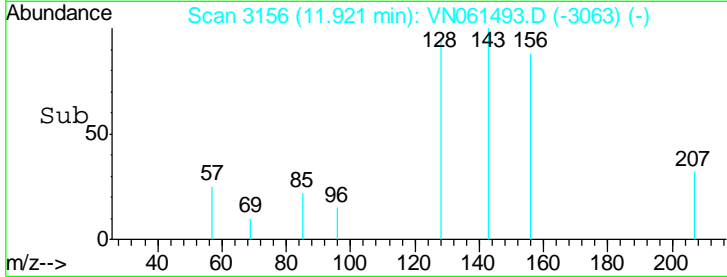
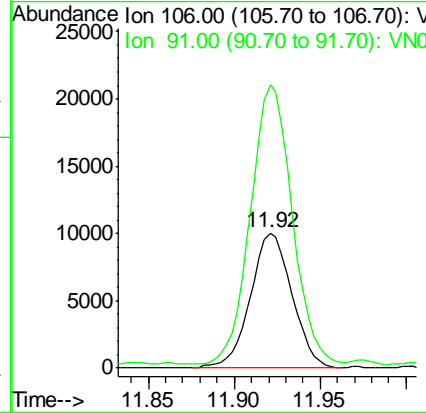
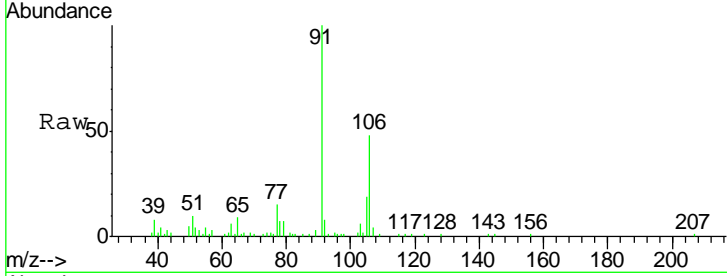




#69
 o-Xylene
 Concen: 2.444 ug/l
 RT: 11.92 min Scan# 3156
 Delta R.T. -0.00 min
 Lab File: VN061493.D
 Acq: 19 May 2020 19:04

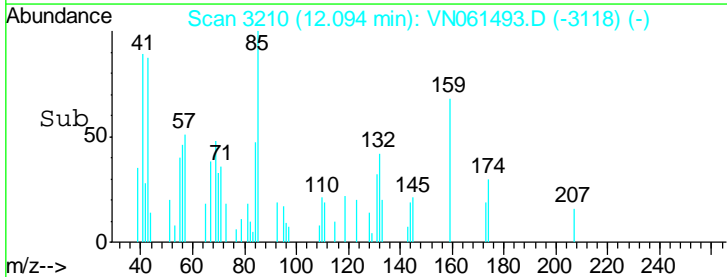
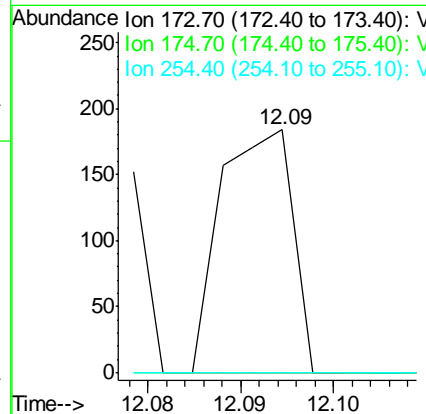
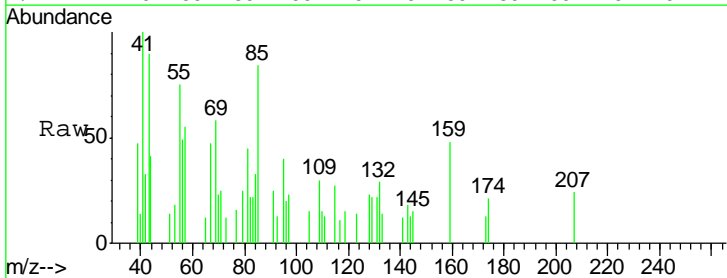
Instrument :
 MSVOA_N
 ClientSampled :
 MW-3DL

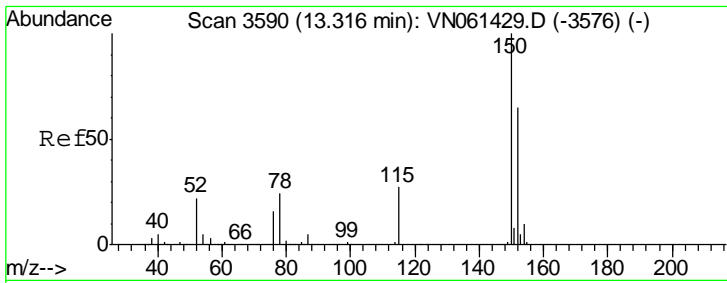
Tgt Ion:106 Resp: 16835
 Ion Ratio Lower Upper
 106 100
 91 207.2 107.9 323.7



#71
 Bromoform
 Concen: 2.053 ug/l
 RT: 12.09 min Scan# 3210
 Delta R.T. -0.01 min
 Lab File: VN061493.D
 Acq: 19 May 2020 19:04

Tgt Ion:173 Resp: 99
 Ion Ratio Lower Upper
 173 100
 175 0.0 23.9 71.8#
 254 0.0 0.0 0.0

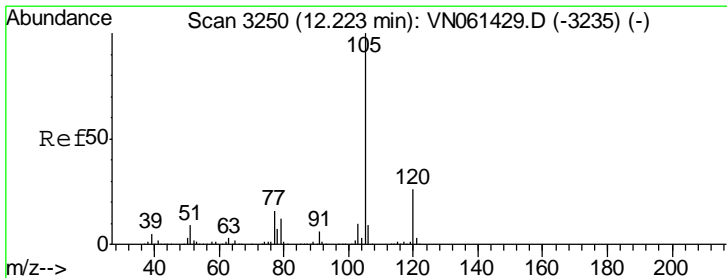
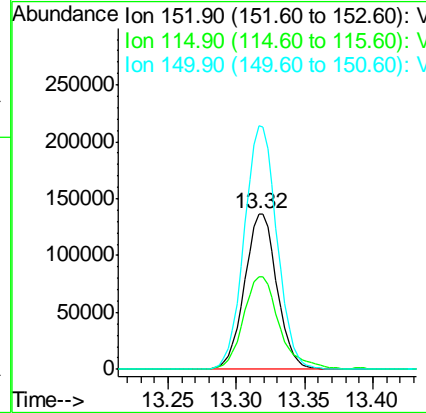
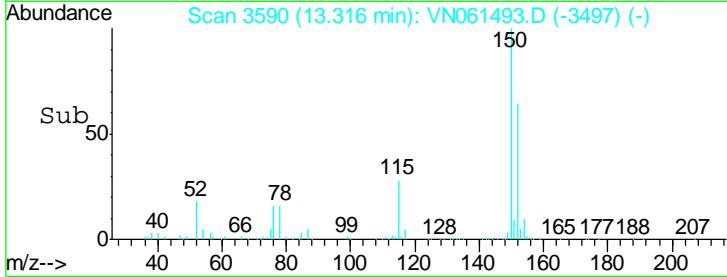
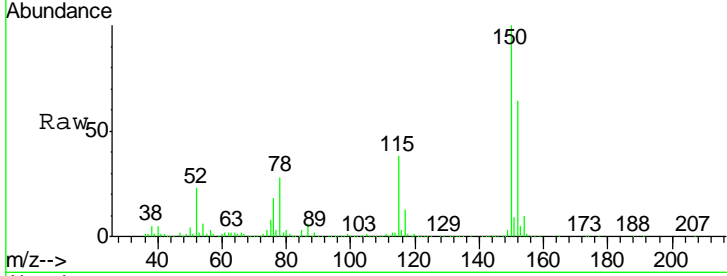




#72
 1,4-Dichlorobenzene-d4
 Concen: 50.000 ug/l
 RT: 13.32 min Scan# 3590
 Delta R.T. -0.00 min
 Lab File: VN061493.D
 Acq: 19 May 2020 19:04

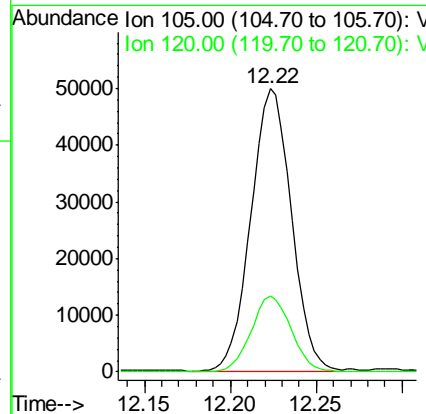
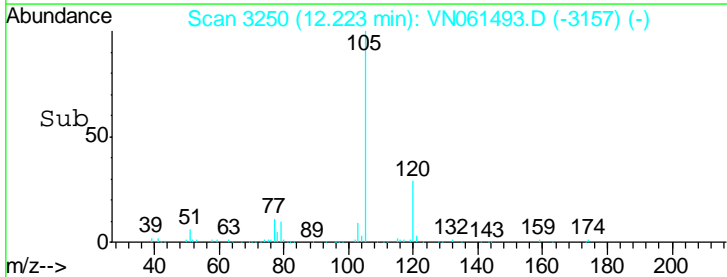
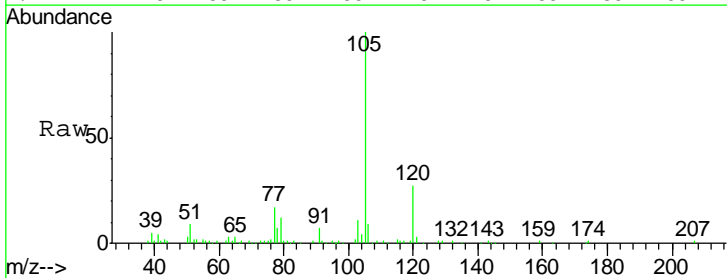
Instrument :
 MSVOA_N
 ClientSampled :
 MW-3DL

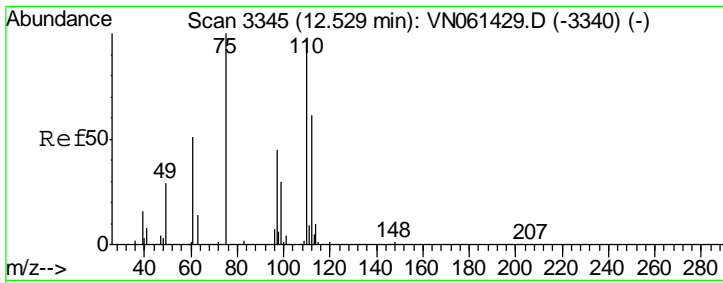
Tgt Ion	Resp	Lower	Upper
152	100		
115	65.0	30.9	92.5
150	158.5	0.0	349.2



#73
 Isopropylbenzene
 Concen: 4.534 ug/l
 RT: 12.22 min Scan# 3250
 Delta R.T. -0.00 min
 Lab File: VN061493.D
 Acq: 19 May 2020 19:04

Tgt Ion	Resp	Lower	Upper
105	100		
120	26.4	13.0	39.0

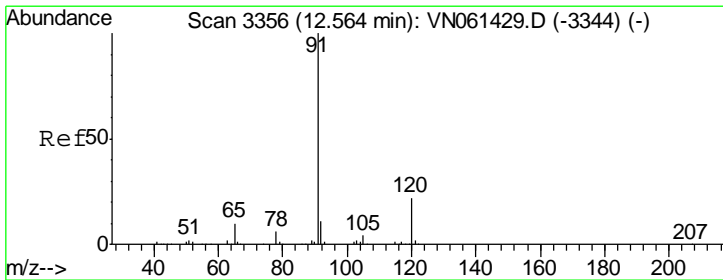
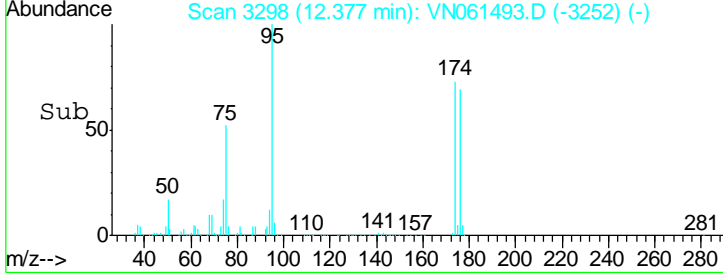
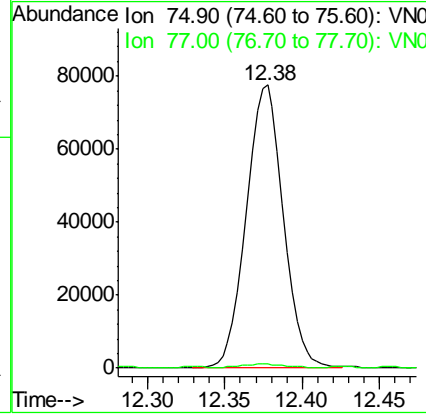
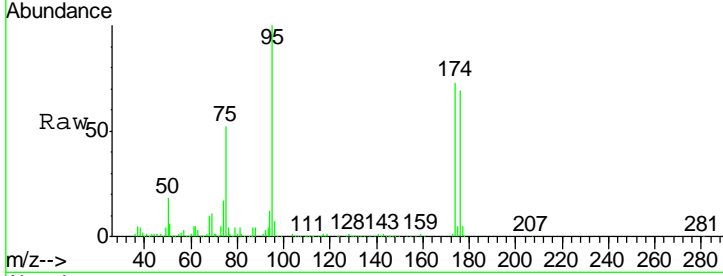




#76
 1,2,3-Trichloropropane
 Concen: 26.753 ug/l
 RT: 12.38 min Scan# 3298
 Delta R.T. -0.15 min
 Lab File: VN061493.D
 Acq: 19 May 2020 19:04

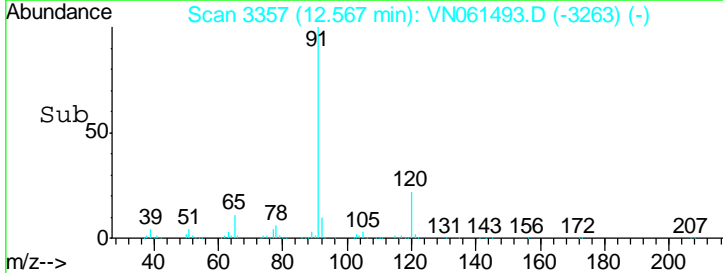
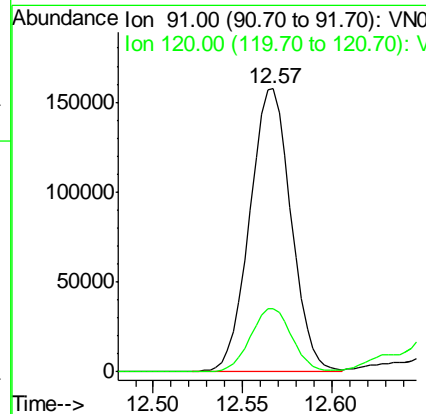
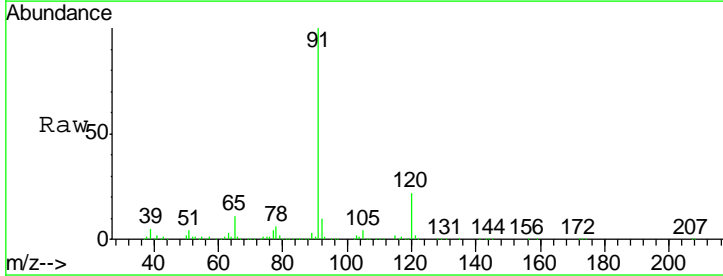
Instrument :
 MSVOA_N
 ClientSampled :
 MW-3DL

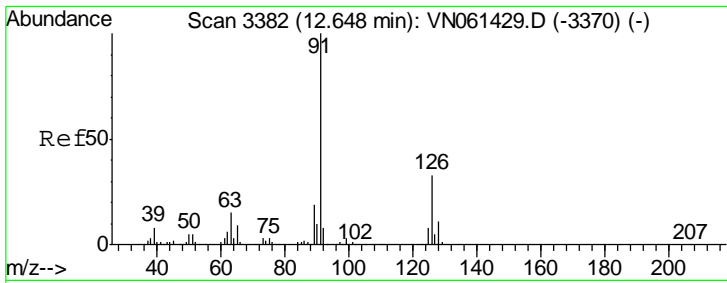
Tgt Ion: 75 Resp: 129232
 Ion Ratio Lower Upper
 75 100
 77 1.4 0.0 0.0#



#78
 n-propylbenzene
 Concen: 12.319 ug/l
 RT: 12.57 min Scan# 3357
 Delta R.T. 0.00 min
 Lab File: VN061493.D
 Acq: 19 May 2020 19:04

Tgt Ion: 91 Resp: 253674
 Ion Ratio Lower Upper
 91 100
 120 22.7 11.2 33.6

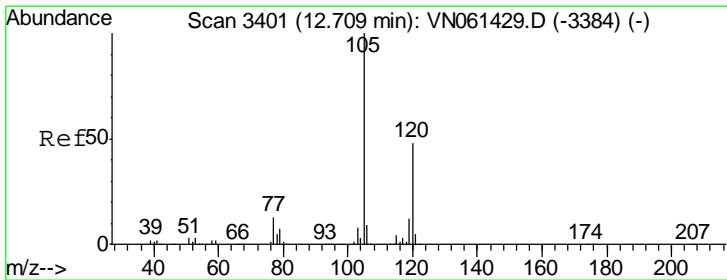
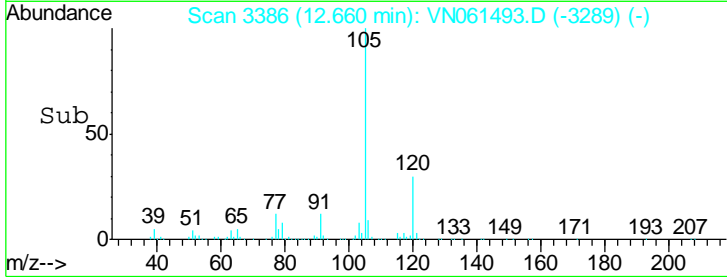
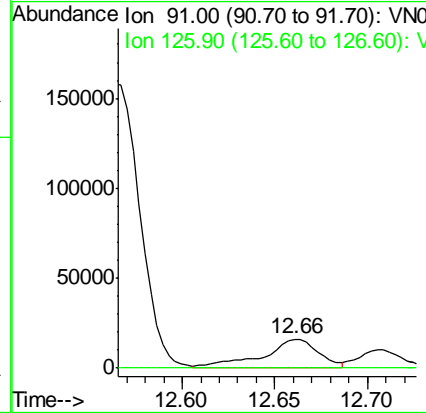
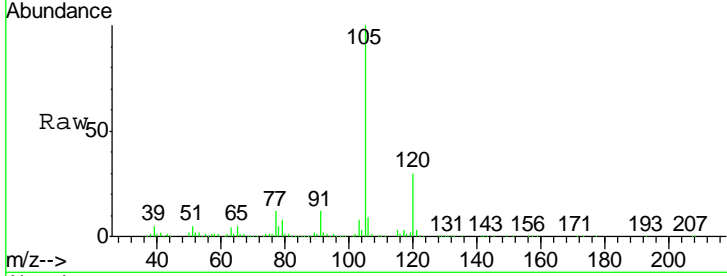




#79
 2-Chlorotoluene
 Concen: 2.647 ug/l
 RT: 12.66 min Scan# 3386
 Delta R.T. 0.01 min
 Lab File: VN061493.D
 Acq: 19 May 2020 19:04

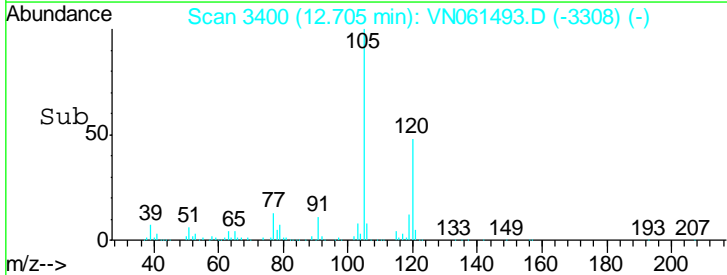
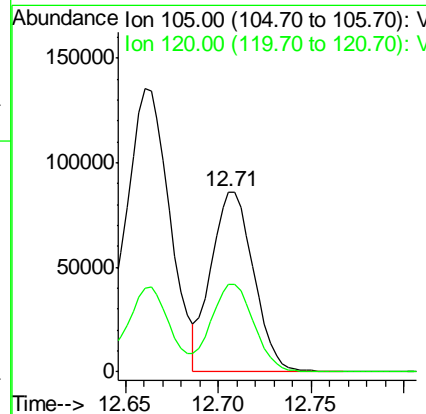
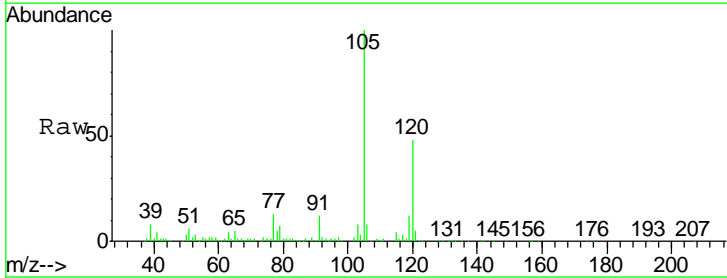
Instrument :
 MSVOA_N
 ClientSampled :
 MW-3DL

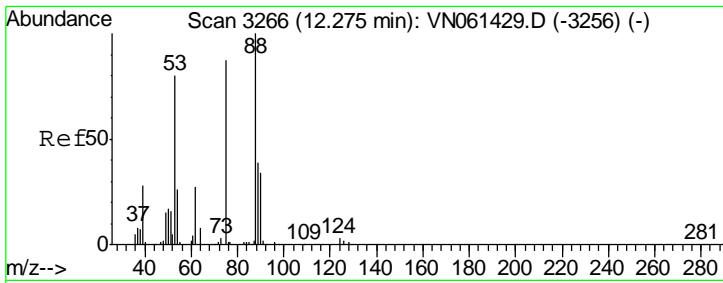
Tgt Ion: 91 Resp: 32212
 Ion Ratio Lower Upper
 91 100
 126 0.7 16.3 48.9#



#80
 1,3,5-Trimethylbenzene
 Concen: 9.185 ug/l
 RT: 12.71 min Scan# 3400
 Delta R.T. -0.00 min
 Lab File: VN061493.D
 Acq: 19 May 2020 19:04

Tgt Ion: 105 Resp: 135921
 Ion Ratio Lower Upper
 105 100
 120 49.0 24.1 72.4

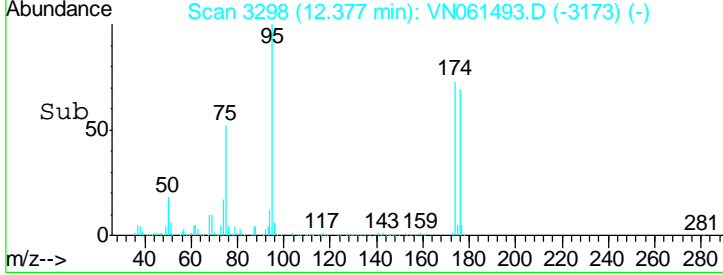
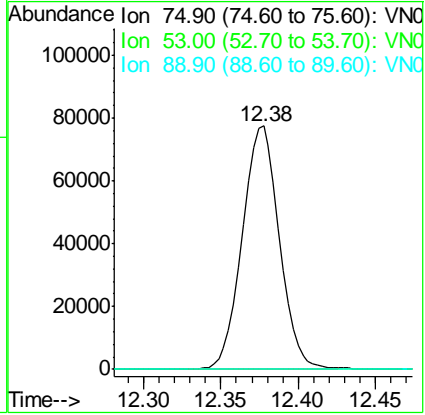
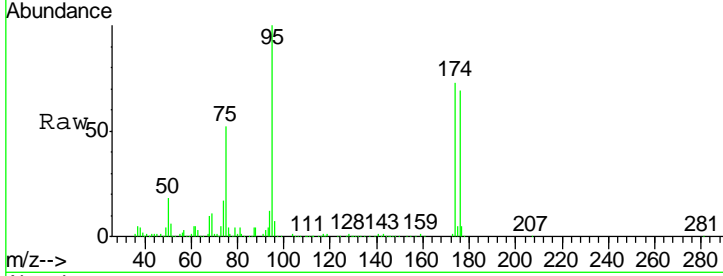




#81
 trans-1,4-Dichloro-2-butene
 Concen: 70.971 ug/l
 RT: 12.38 min Scan# 3298
 Delta R.T. 0.10 min
 Lab File: VN061493.D
 Acq: 19 May 2020 19:04

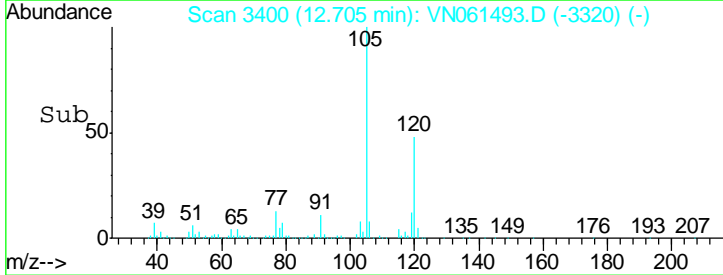
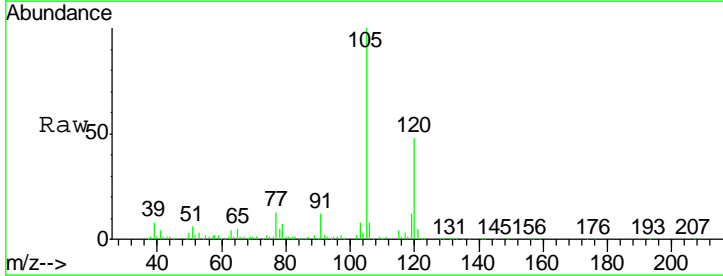
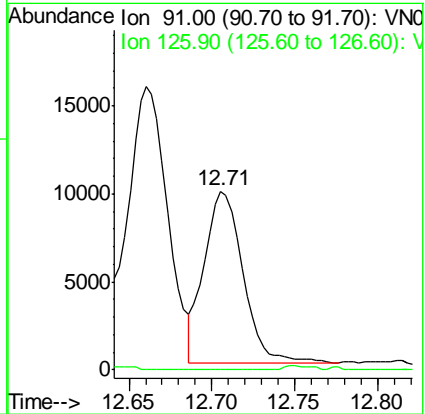
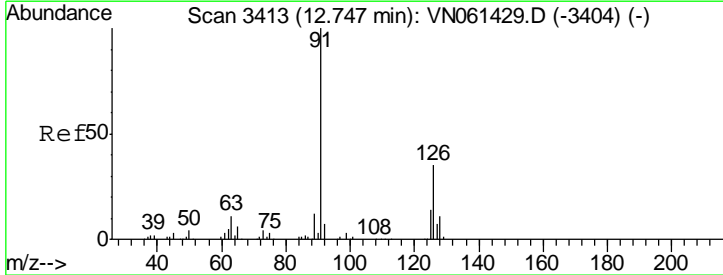
Instrument : MSVOA_N
 Client Sampled : MW-3DL

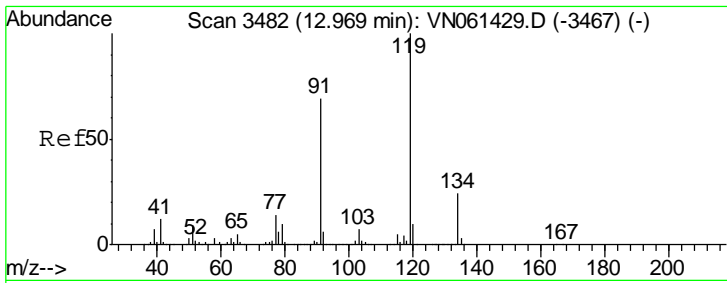
Tgt Ion	Resp	Lower	Upper
75	100		
53	0.3	75.2	112.8#
89	0.0	38.2	57.4#



#82
 4-Chlorotoluene
 Concen: 1.266 ug/l
 RT: 12.71 min Scan# 3400
 Delta R.T. -0.04 min
 Lab File: VN061493.D
 Acq: 19 May 2020 19:04

Tgt Ion	Resp	Lower	Upper
91	100		
126	0.0	16.1	48.2#

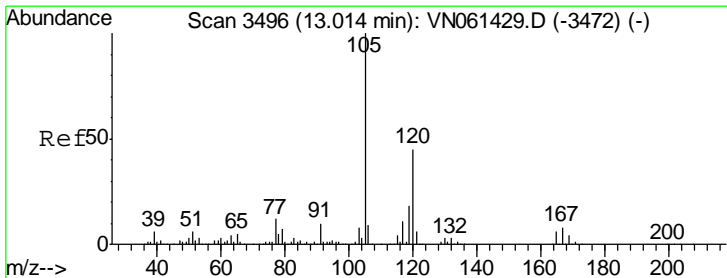
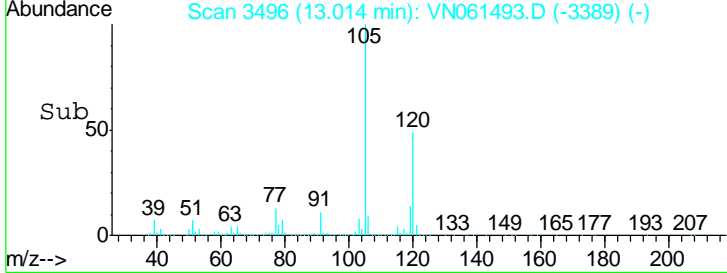
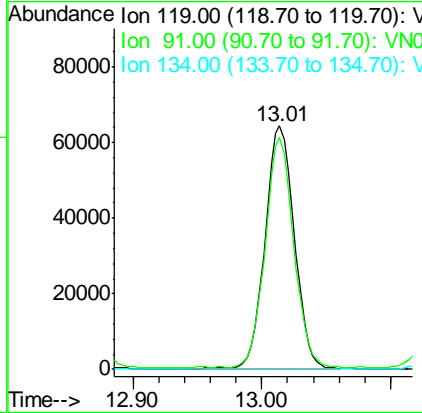
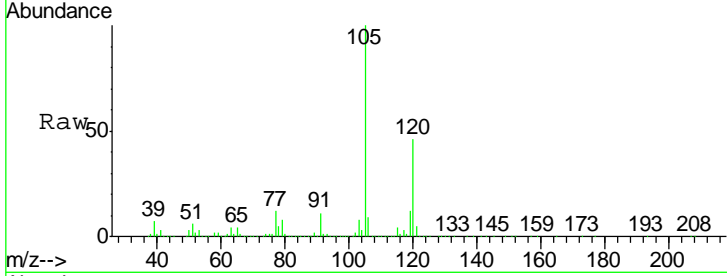




#83
 tert-Butylbenzene
 Concen: 8.106 ug/l
 RT: 13.01 min Scan# 3496
 Delta R.T. 0.04 min
 Lab File: VN061493.D
 Acq: 19 May 2020 19:04

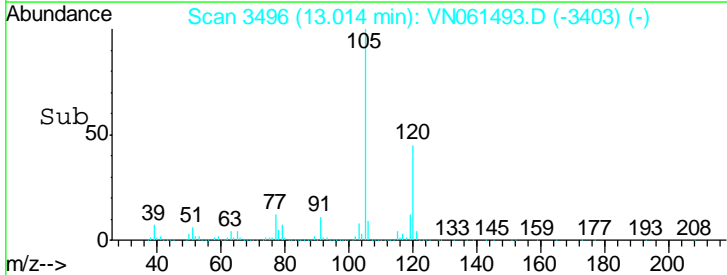
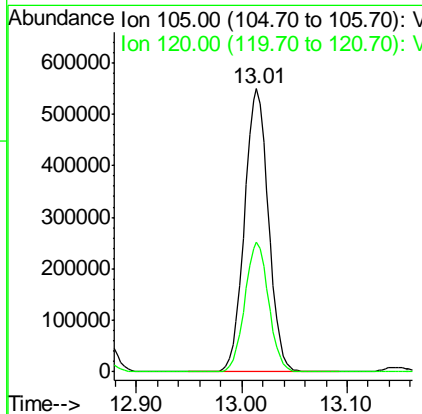
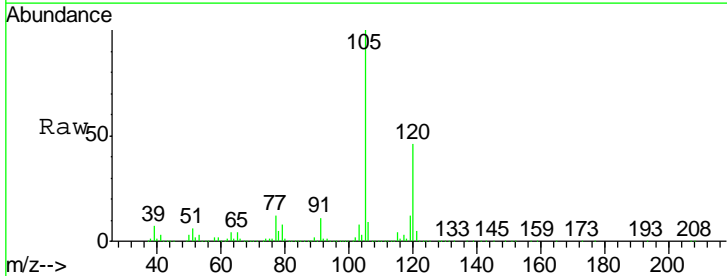
Instrument : MSVOA_N
 ClientSampled : MW-3DL

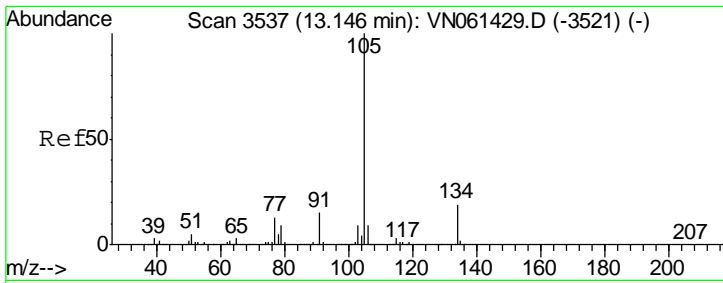
Tgt Ion	Resp	Lower	Upper
119	102749		
91	100	33.7	101.0
134	0.0	12.8	38.3#



#84
 1,2,4-Trimethylbenzene
 Concen: 58.344 ug/l
 RT: 13.01 min Scan# 3496
 Delta R.T. -0.00 min
 Lab File: VN061493.D
 Acq: 19 May 2020 19:04

Tgt Ion	Resp	Lower	Upper
105	864030		
120	100	22.4	67.3

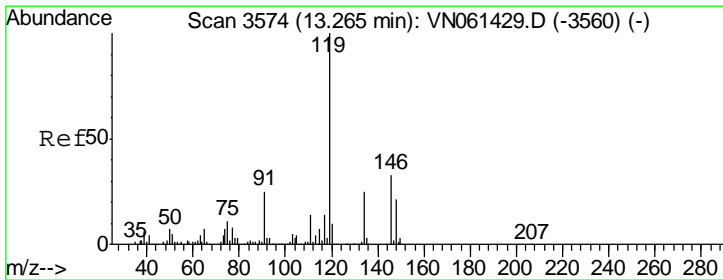
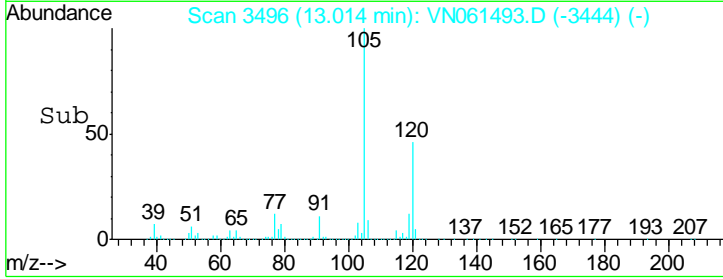
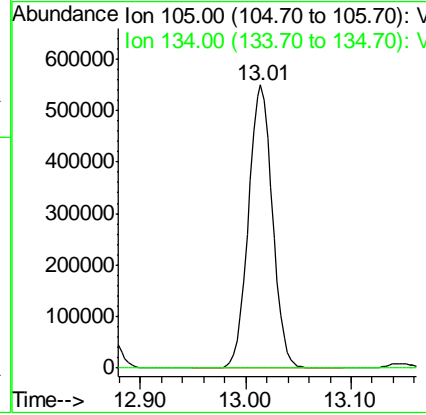
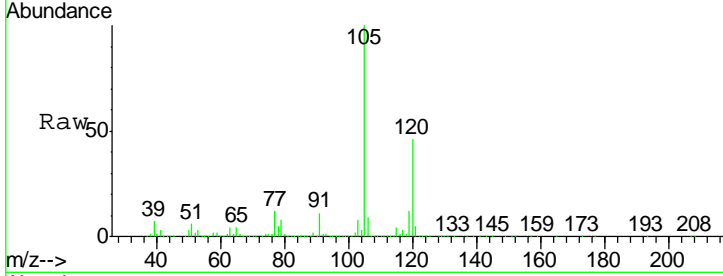




#85
 sec-Butylbenzene
 Concen: 50.411 ug/l
 RT: 13.01 min Scan# 3496
 Delta R.T. -0.13 min
 Lab File: VN061493.D
 Acq: 19 May 2020 19:04

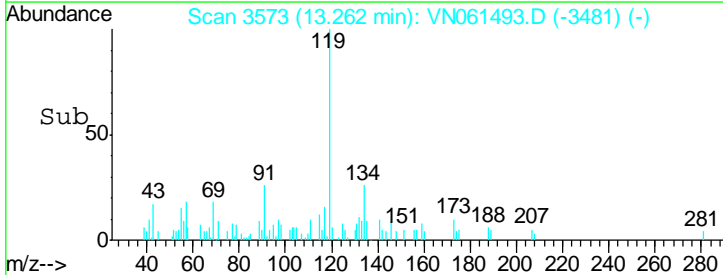
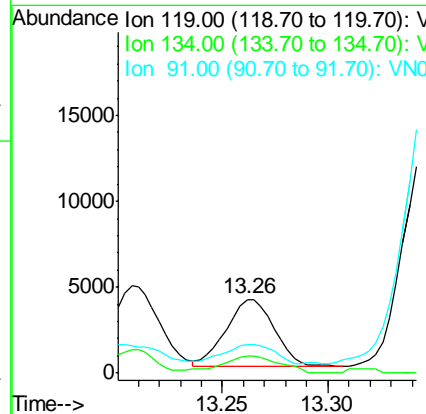
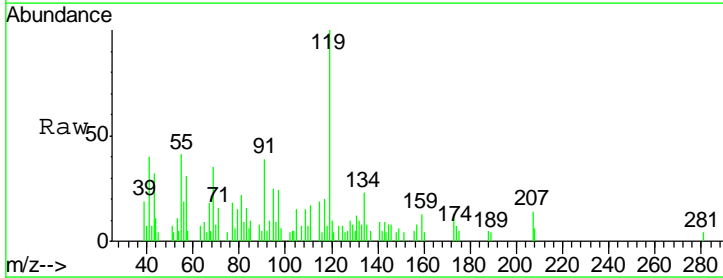
Instrument :
 MSVOA_N
 ClientSampled :
 MW-3DL

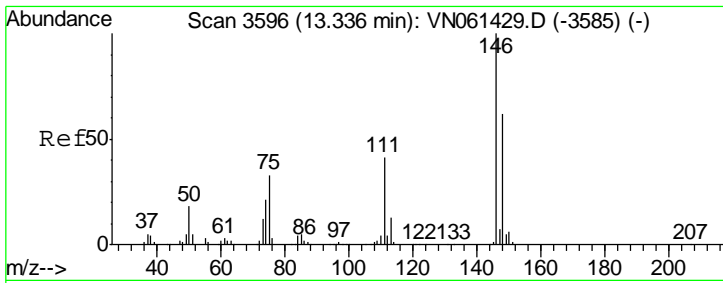
Tgt Ion	Resp	Lower	Upper
105	100		
134	0.0	9.8	29.5#



#86
 p-Isopropyltoluene
 Concen: 0.409 ug/l
 RT: 13.26 min Scan# 3573
 Delta R.T. -0.00 min
 Lab File: VN061493.D
 Acq: 19 May 2020 19:04

Tgt Ion	Resp	Lower	Upper
119	100		
134	31.2	12.7	38.1
91	0.0	12.6	37.6#

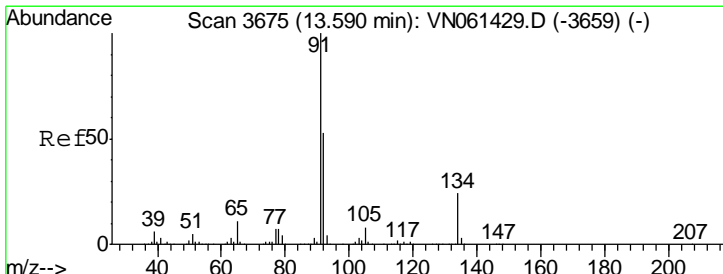
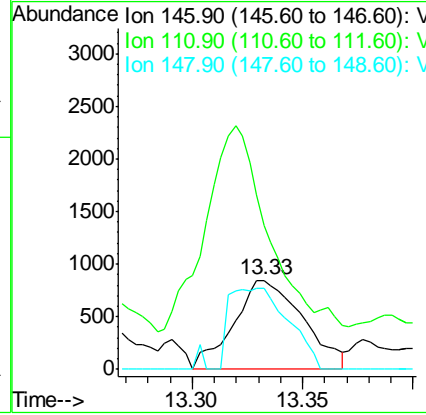
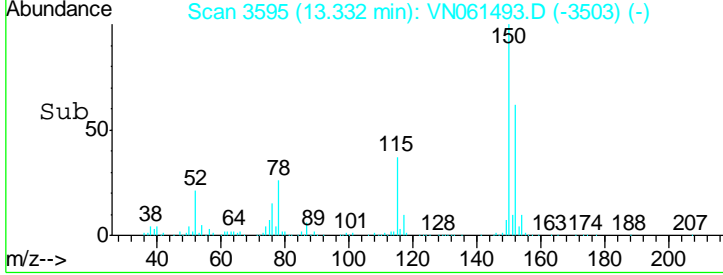
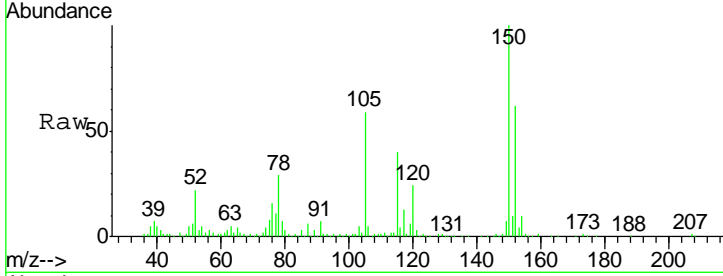




#88
 1,4-Dichlorobenzene
 Concen: 0.257 ug/l
 RT: 13.33 min Scan# 3595
 Delta R.T. -0.00 min
 Lab File: VN061493.D
 Acq: 19 May 2020 19:04

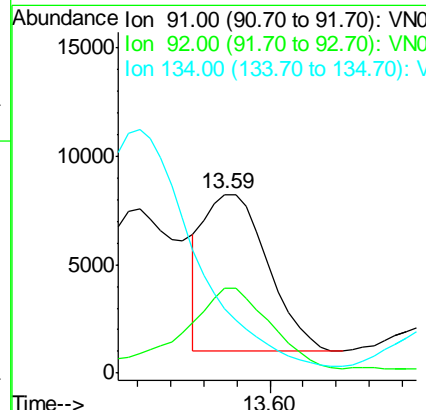
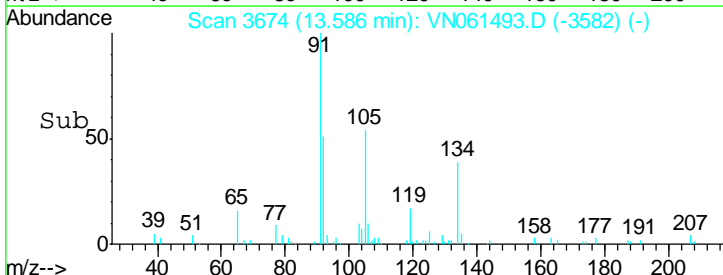
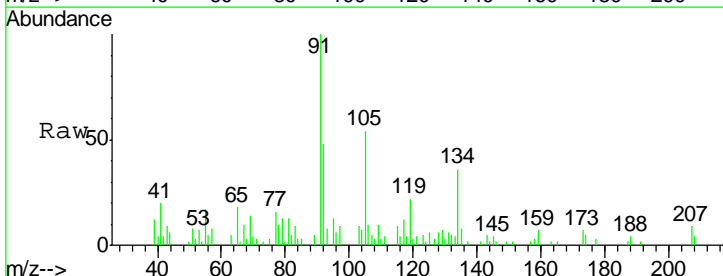
Instrument :
 MSVOA_N
 ClientSampled :
 MW-3DL

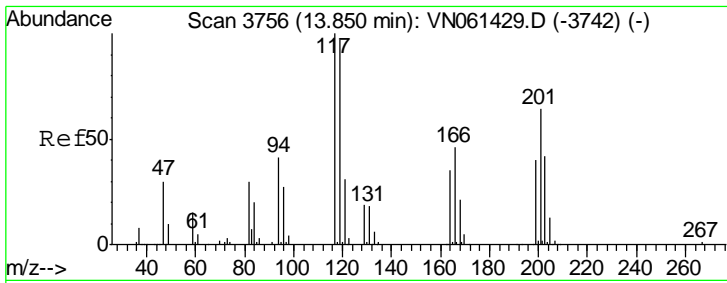
Tgt Ion	Resp	Lower	Upper
146	1844		
111	208.4	20.8	62.5#
148	77.7	31.6	94.8



#89
 n-Butylbenzene
 Concen: 0.697 ug/l
 RT: 13.59 min Scan# 3674
 Delta R.T. -0.00 min
 Lab File: VN061493.D
 Acq: 19 May 2020 19:04

Tgt Ion	Resp	Lower	Upper
91	9639		
92	71.9	26.8	80.3
134	0.0	12.4	37.4#

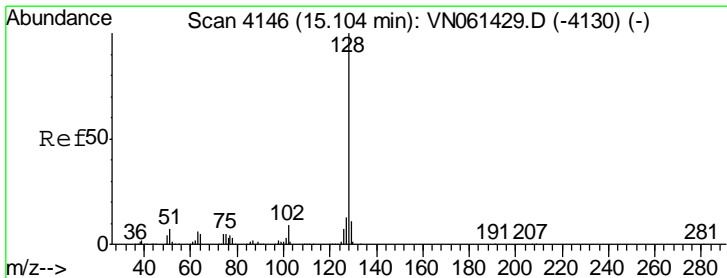
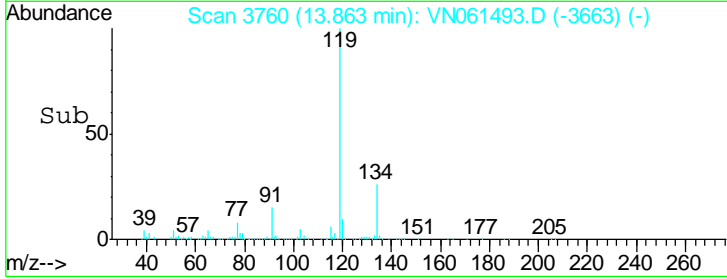
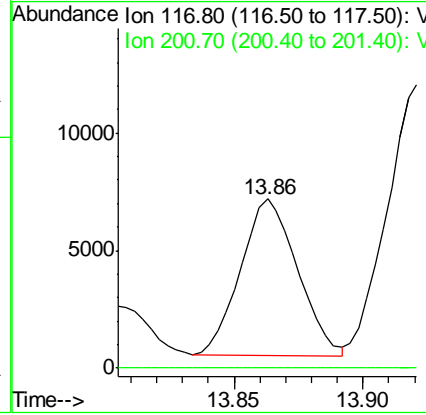
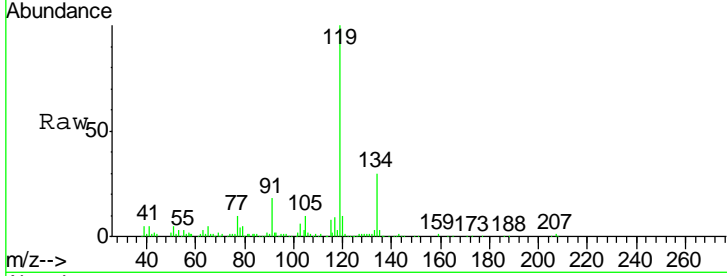




#90
 Hexachloroethane
 Concen: 4.940 ug/l
 RT: 13.86 min Scan# 3760
 Delta R.T. 0.01 min
 Lab File: VN061493.D
 Acq: 19 May 2020 19:04

Instrument :
 MSVOA_N
 ClientSampled :
 MW-3DL

Tgt Ion:117 Resp: 10189
 Ion Ratio Lower Upper
 117 100
 201 0.0 32.9 98.7#



#95
 Naphthalene
 Concen: 15.841 ug/l
 RT: 15.10 min Scan# 4146
 Delta R.T. -0.00 min
 Lab File: VN061493.D
 Acq: 19 May 2020 19:04

Tgt Ion:128 Resp: 188019
 Ion Ratio Lower Upper
 128 100
 127 13.1 10.1 15.1
 129 11.0 8.6 13.0

