

Data Path : Z:\VOASRV\HPCHEM1\MSVOA N\DATA\VN051920\
 Data File : VN061494.D
 Acq On : 19 May 2020 19:27
 Operator : JC/MD
 Sample : L2645-04DL 20X
 Misc : 5.00mL/MSVOA N/WATER
 ALS Vial : 21 Sample Multiplier: 1

Instrument :
 MSVOA_N
 ClientSampled :
 MW-2DL

Quant Time: May 20 14:35:33 2020
 Quant Method : Z:\VOASRV\HPCHEM1\MSVOA_N\METHODS\82N051820W.M
 Quant Title : SW846 8260
 QLast Update : Mon May 18 13:09:55 2020
 Response via : Initial Calibration

Internal Standards	R.T.	QIon	Response	Conc	Units	Dev(Min)
1) Pentafluorobenzene	7.63	168	299969	50.00	ug/l	0.00
34) 1,4-Difluorobenzene	8.55	114	556061	50.00	ug/l	0.00
63) Chlorobenzene-d5	11.38	117	548435	50.00	ug/l	0.00
72) 1,4-Dichlorobenzene-d4	13.32	152	257400	50.00	ug/l	0.00

System Monitoring Compounds

33) 1,2-Dichloroethane-d4	7.99	65	205931	46.00	ug/l	0.00
Spiked Amount	50.000		Recovery	=	92.00%	
35) Dibromofluoromethane	7.55	113	154507	53.04	ug/l	0.00
Spiked Amount	50.000		Recovery	=	106.08%	
50) Toluene-d8	10.06	98	684688	50.67	ug/l	0.00
Spiked Amount	50.000		Recovery	=	101.34%	
62) 4-Bromofluorobenzene	12.38	95	281680	55.80	ug/l	0.00
Spiked Amount	50.000		Recovery	=	111.60%	

Target Compounds

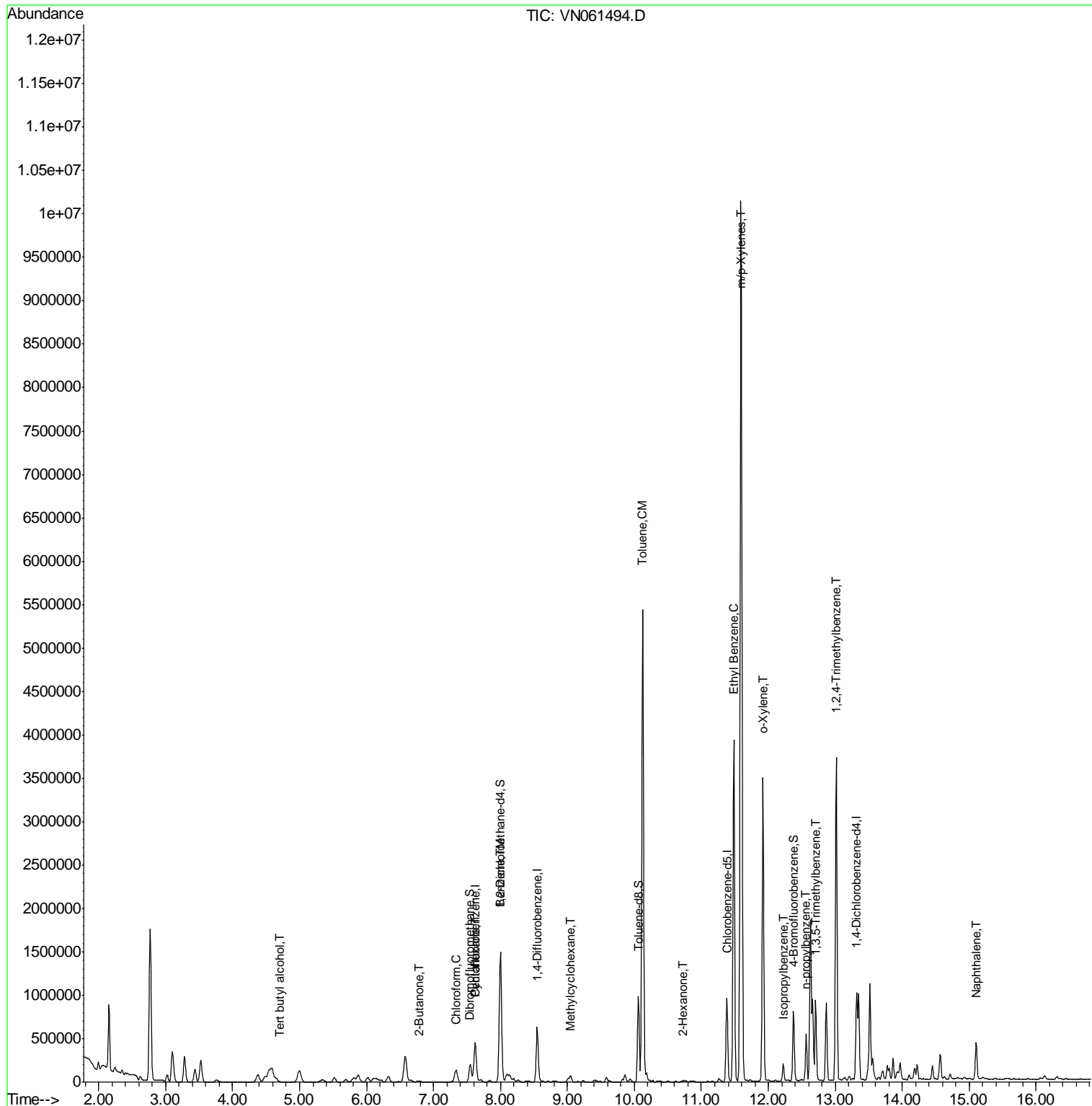
						Qvalue
11) Tert butyl alcohol	4.72	59	8199	15.894	ug/l #	73
25) 2-Butanone	6.79	43	11791	5.785	ug/l	99
30) Chloroform	7.33	83	98982	14.449	ug/l	97
31) Cyclohexane	7.62	56	64194	8.658	ug/l #	89
39) Methylcyclohexane	9.05	83	32847	5.172	ug/l	98
40) Benzene	8.00	78	1481935	94.578	ug/l	99
52) Toluene	10.12	92	2624128	260.858	ug/l	90
59) 2-Hexanone	10.73	43	5279	1.629	ug/l	95
67) Ethyl Benzene	11.48	91	2934229	143.730	ug/l	95
68) m/p-Xylenes	11.59	106	3721671	480.282	ug/l #	73
69) o-Xylene	11.92	106	1011686	134.914	ug/l	96
73) Isopropylbenzene	12.22	105	133224	6.447	ug/l	98
78) n-propylbenzene	12.56	91	444072	18.861	ug/l	98
80) 1,3,5-Trimethylbenzene	12.71	105	513942	30.376	ug/l	98
84) 1,2,4-Trimethylbenzene	13.01	105	2108473	124.520	ug/l	98
95) Naphthalene	15.10	128	363765	26.805	ug/l	99

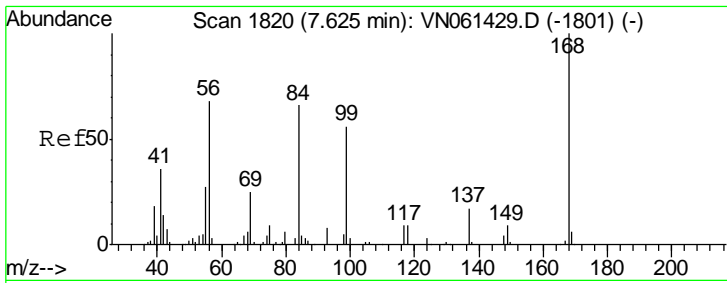
(#) = qualifier out of range (m) = manual integration (+) = signals summed

Data Path : Z:\VOASRV\HPCHEM1\MSVOA N\DATA\VN051920\
 Data File : VN061494.D
 Acq On : 19 May 2020 19:27
 Operator : JC/MD
 Sample : L2645-04DL 20X
 Misc : 5.00mL/MSVOA N/WATER
 ALS Vial : 21 Sample Multiplier: 1

Instrument :
 MSVOA_N
 ClientSampled :
 MW-2DL

Quant Time: May 20 14:35:33 2020
 Quant Method : Z:\VOASRV\HPCHEM1\MSVOA_N\METHODS\82N051820W.M
 Quant Title : SW846 8260
 QLast Update : Mon May 18 13:09:55 2020
 Response via : Initial Calibration

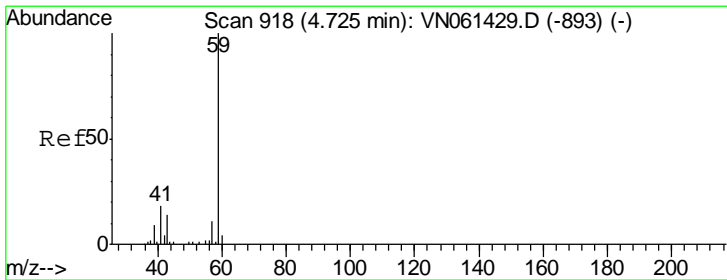
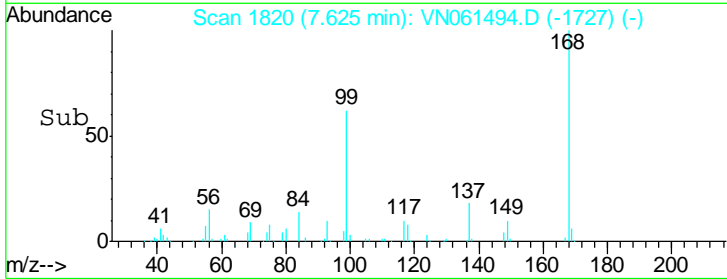
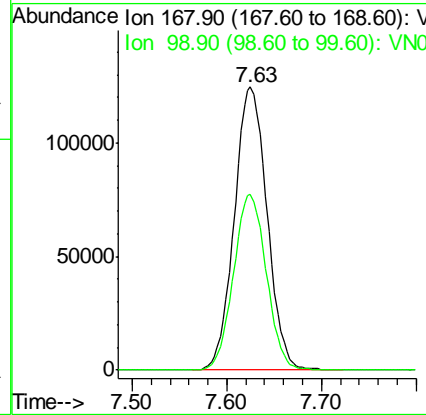
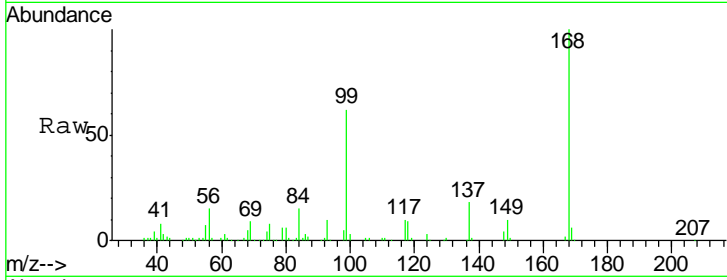




#1
 Pentafluorobenzene
 Concen: 50.000 ug/l
 RT: 7.63 min Scan# 1820
 Delta R.T. -0.00 min
 Lab File: VN061494.D
 Acq: 19 May 2020 19:27

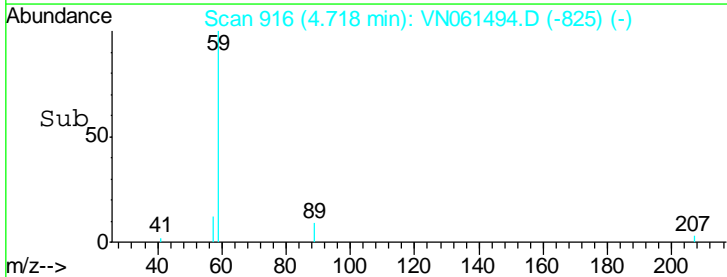
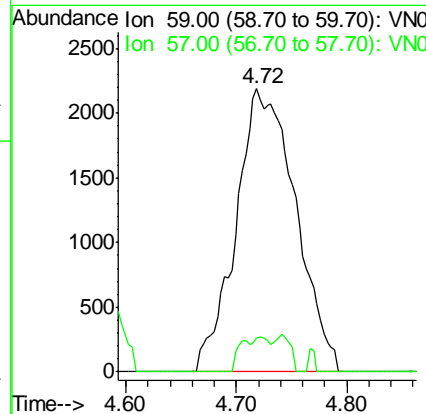
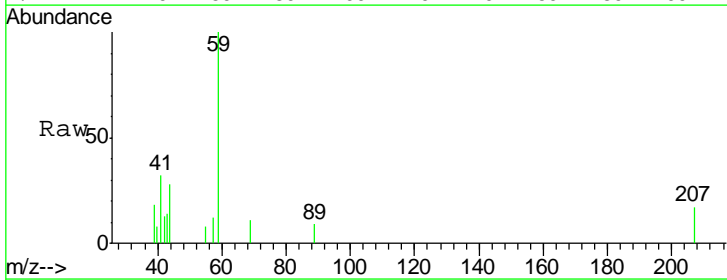
Instrument :
 MSVOA_N
 ClientSampled :
 MW-2DL

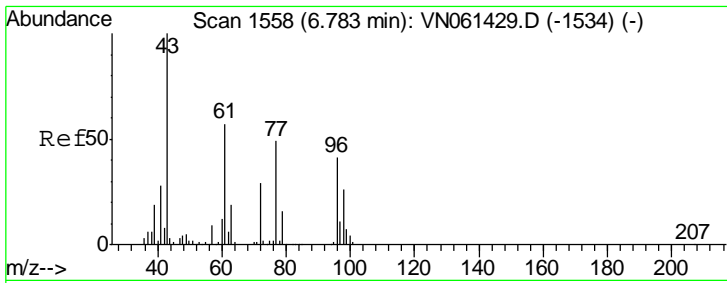
Tgt Ion: 168 Resp: 299969
 Ion Ratio Lower Upper
 168 100
 99 62.0 51.1 76.7



#11
 Tert butyl alcohol
 Concen: 15.894 ug/l
 RT: 4.72 min Scan# 916
 Delta R.T. -0.01 min
 Lab File: VN061494.D
 Acq: 19 May 2020 19:27

Tgt Ion: 59 Resp: 8199
 Ion Ratio Lower Upper
 59 100
 57 0.0 8.2 12.2#

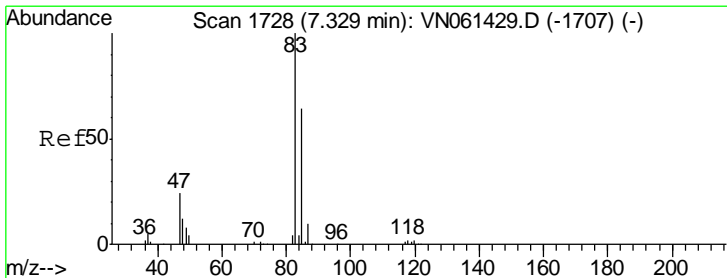
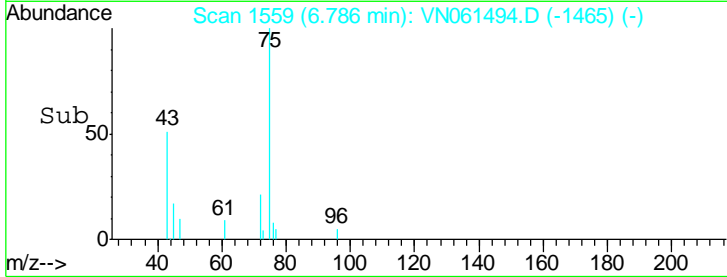
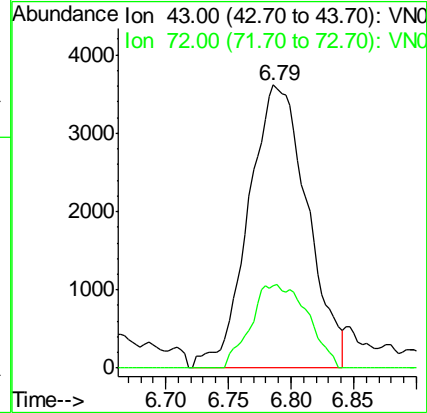
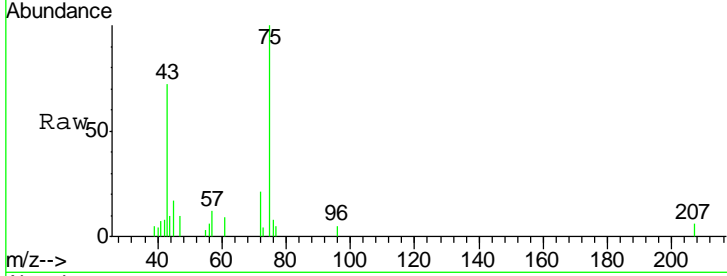




#25
 2-Butanone
 Concen: 5.785 ug/l
 RT: 6.79 min Scan# 1559
 Delta R.T. 0.00 min
 Lab File: VN061494.D
 Acq: 19 May 2020 19:27

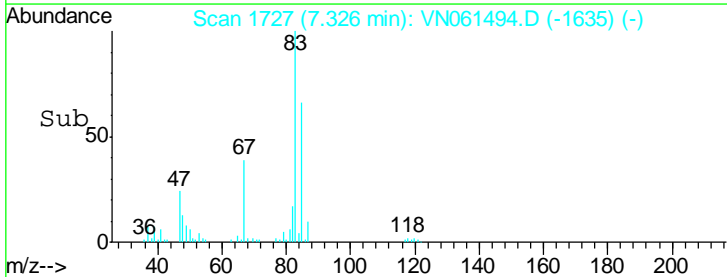
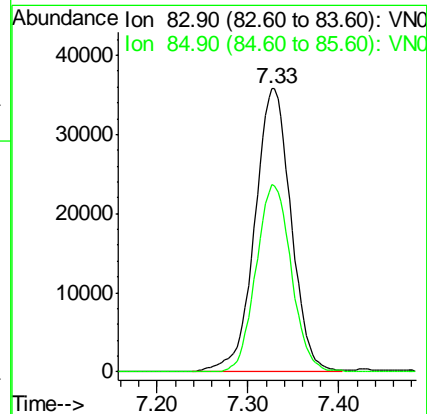
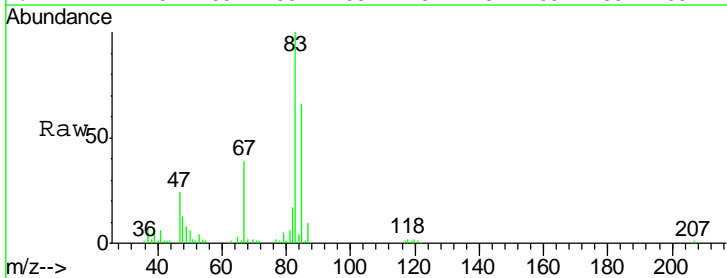
Instrument :
 MSVOA_N
 ClientSampled :
 MW-2DL

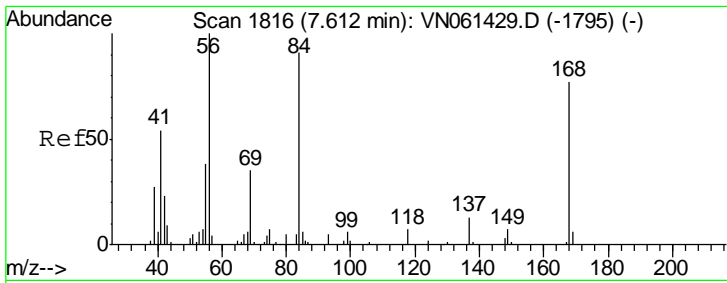
Tgt Ion: 43 Resp: 11791
 Ion Ratio Lower Upper
 43 100
 72 29.3 23.0 34.6



#30
 Chloroform
 Concen: 14.449 ug/l
 RT: 7.33 min Scan# 1727
 Delta R.T. -0.00 min
 Lab File: VN061494.D
 Acq: 19 May 2020 19:27

Tgt Ion: 83 Resp: 98982
 Ion Ratio Lower Upper
 83 100
 85 66.0 51.0 76.4

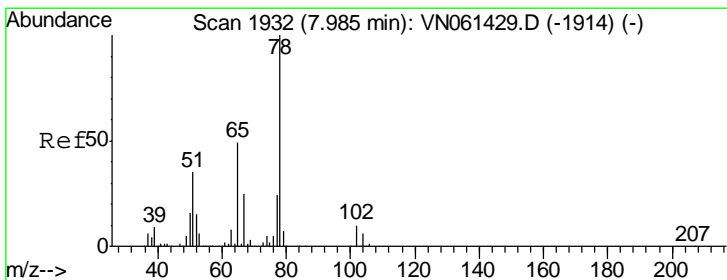
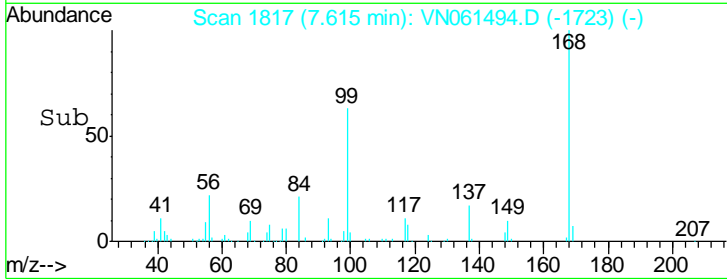
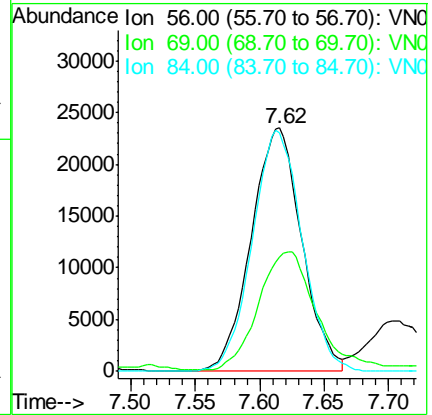
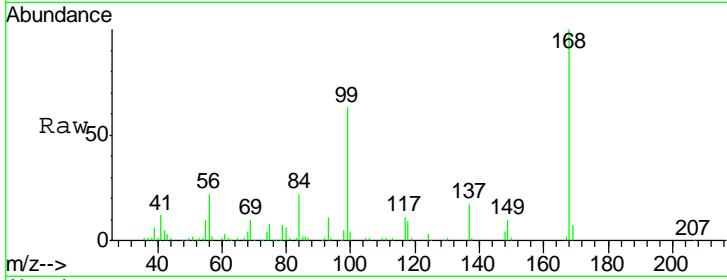




#31
 Cyclohexane
 Concen: 8.658 ug/l
 RT: 7.62 min Scan# 1817
 Delta R.T. 0.00 min
 Lab File: VN061494.D
 Acq: 19 May 2020 19:27

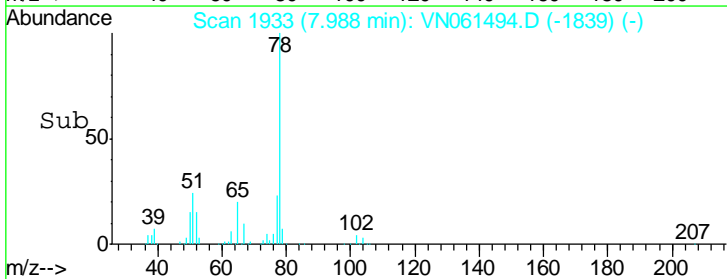
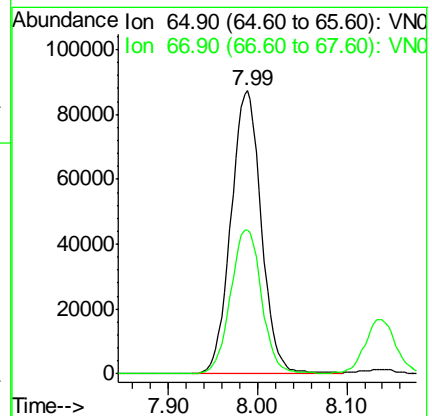
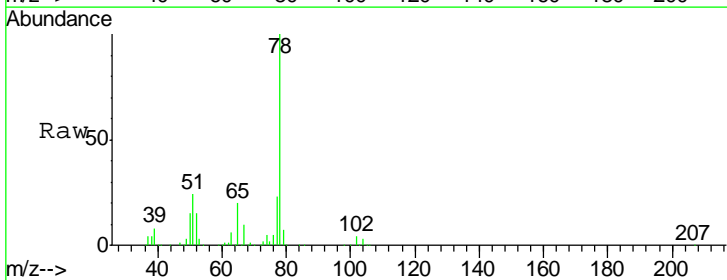
Instrument :
 MSVOA_N
 ClientSampled :
 MW-2DL

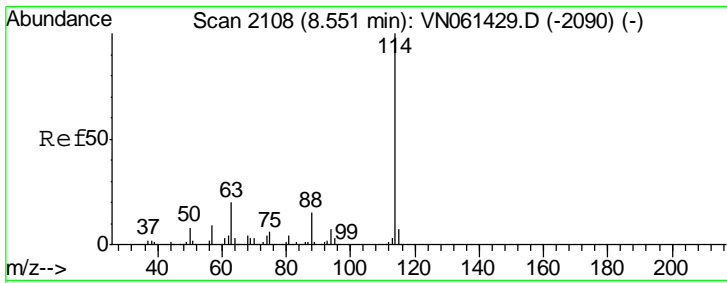
Tgt Ion	Resp	Lower	Upper
56	100		
69	46.3	27.8	41.6#
84	98.1	72.7	109.1



#33
 1,2-Dichloroethane-d4
 Concen: 45.999 ug/l
 RT: 7.99 min Scan# 1933
 Delta R.T. 0.00 min
 Lab File: VN061494.D
 Acq: 19 May 2020 19:27

Tgt Ion	Resp	Lower	Upper
65	100		
67	52.1	0.0	101.4

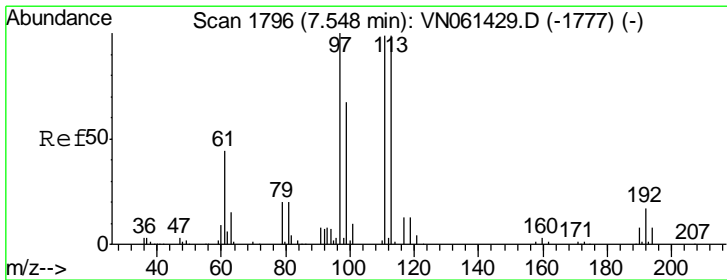
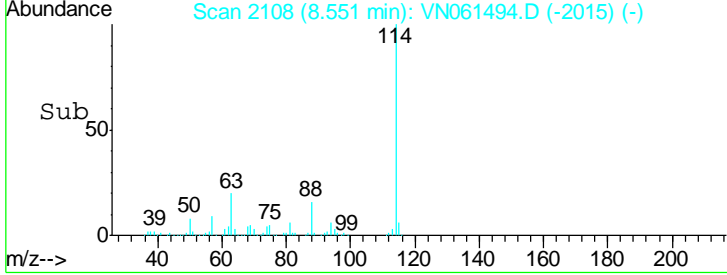
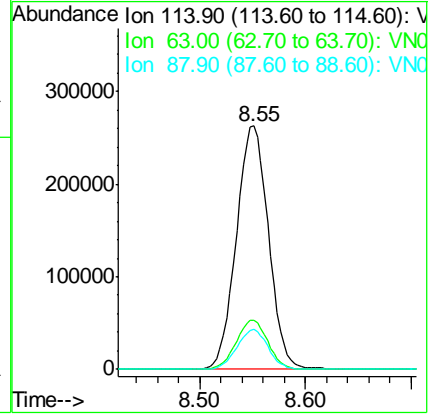
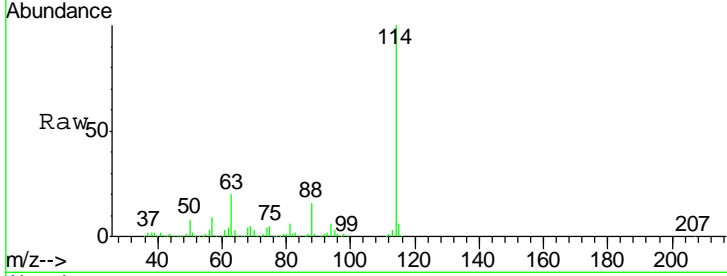




#34
 1,4-Difluorobenzene
 Concen: 50.000 ug/l
 RT: 8.55 min Scan# 2108
 Delta R.T. -0.00 min
 Lab File: VN061494.D
 Acq: 19 May 2020 19:27

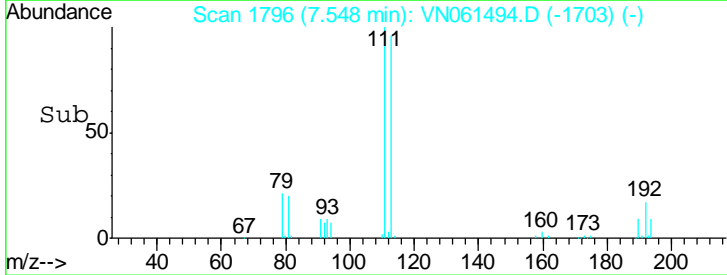
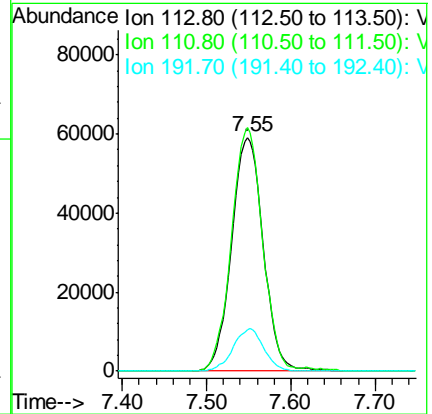
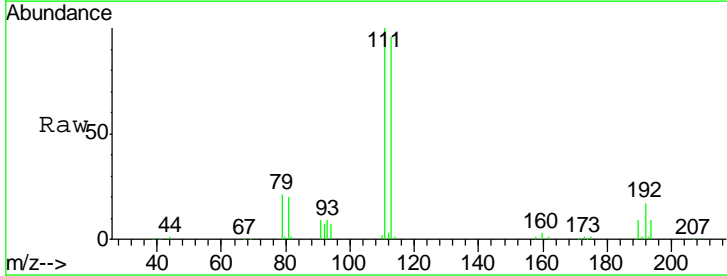
Instrument :
 MSVOA_N
 ClientSampled :
 MW-2DL

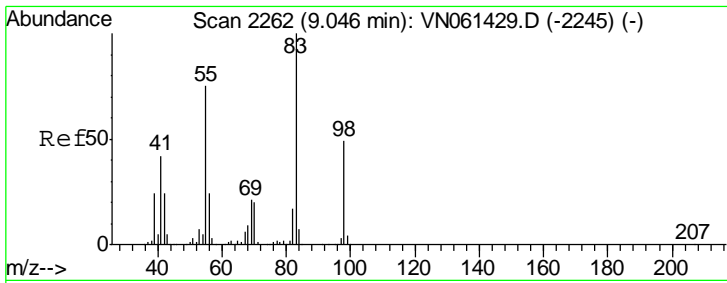
Tgt Ion	Resp	Lower	Upper
114	100		
63	20.3	0.0	40.8
88	16.2	0.0	30.8



#35
 Dibromofluoromethane
 Concen: 53.040 ug/l
 RT: 7.55 min Scan# 1796
 Delta R.T. -0.00 min
 Lab File: VN061494.D
 Acq: 19 May 2020 19:27

Tgt Ion	Resp	Lower	Upper
113	100		
111	102.1	80.6	121.0
192	17.5	13.2	19.8

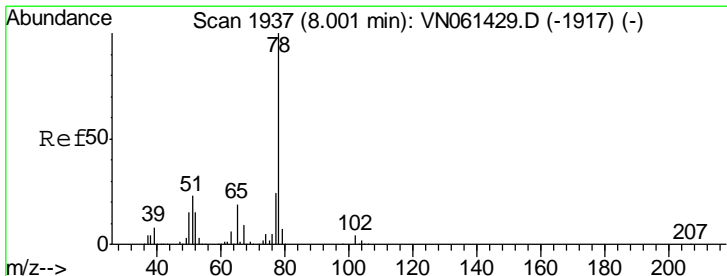
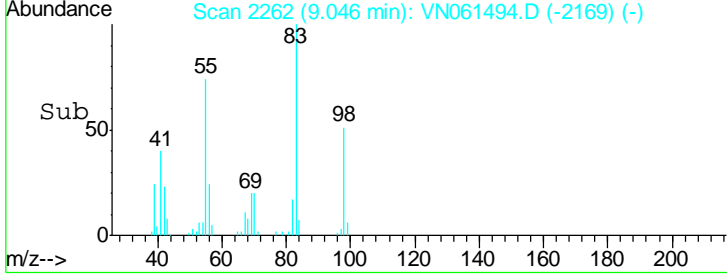
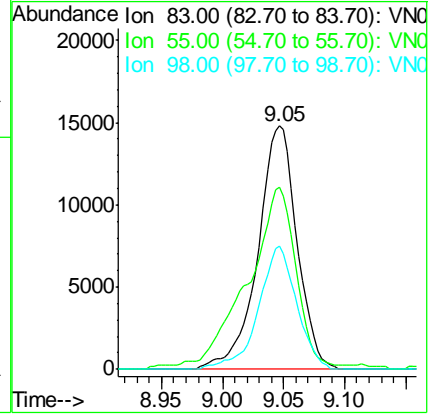
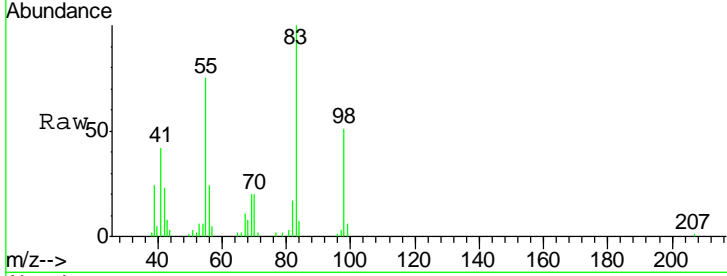




#39
 Methylcyclohexane
 Concen: 5.172 ug/l
 RT: 9.05 min Scan# 2262
 Delta R.T. -0.00 min
 Lab File: VN061494.D
 Acq: 19 May 2020 19:27

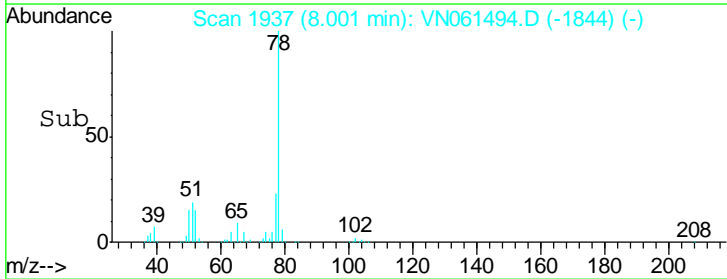
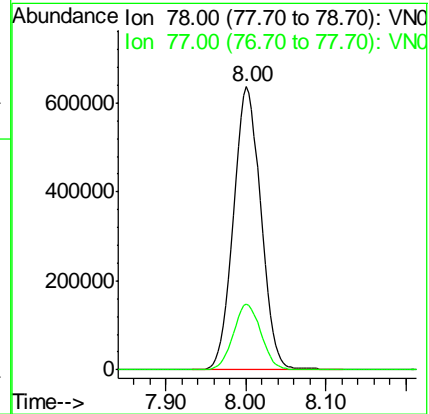
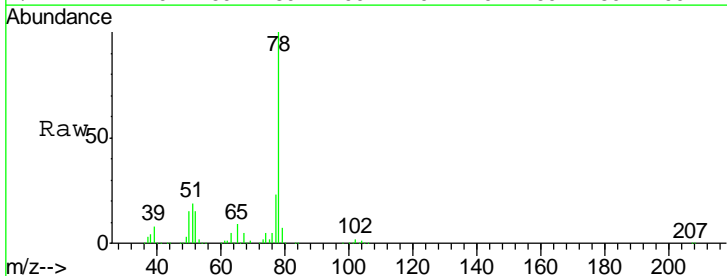
Instrument :
 MSVOA_N
 ClientSampled :
 MW-2DL

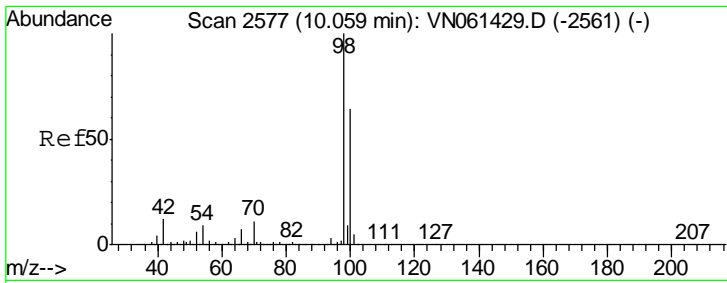
Tgt Ion	Resp	Lower	Upper
83	100		
55	73.0	59.7	89.5
98	50.8	38.9	58.3



#40
 Benzene
 Concen: 94.578 ug/l
 RT: 8.00 min Scan# 1937
 Delta R.T. -0.00 min
 Lab File: VN061494.D
 Acq: 19 May 2020 19:27

Tgt Ion	Resp	Lower	Upper
78	100		
77	23.3	19.1	28.7

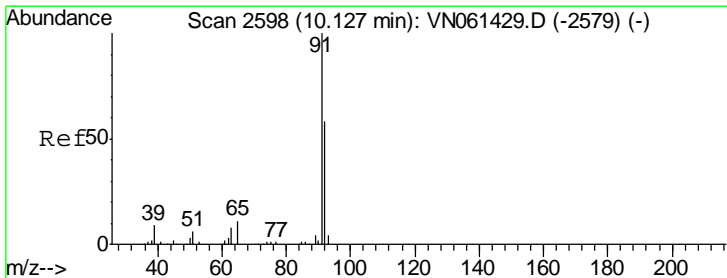
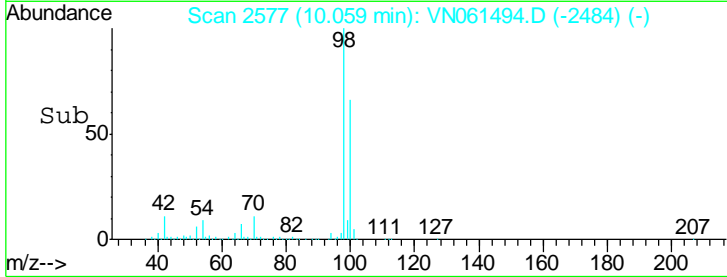
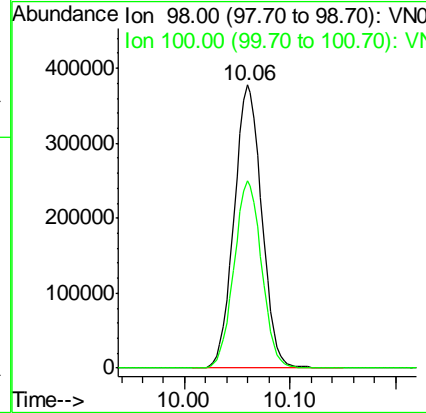
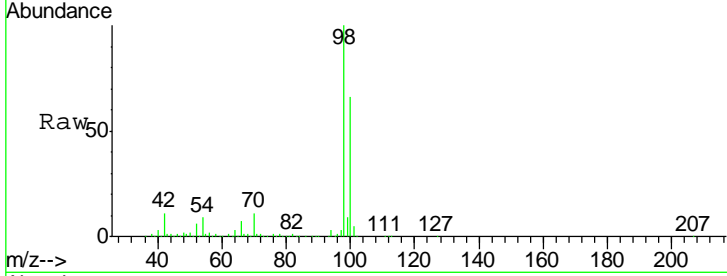




#50
 Toluene-d8
 Concen: 50.675 ug/l
 RT: 10.06 min Scan# 2577
 Delta R.T. -0.00 min
 Lab File: VN061494.D
 Acq: 19 May 2020 19:27

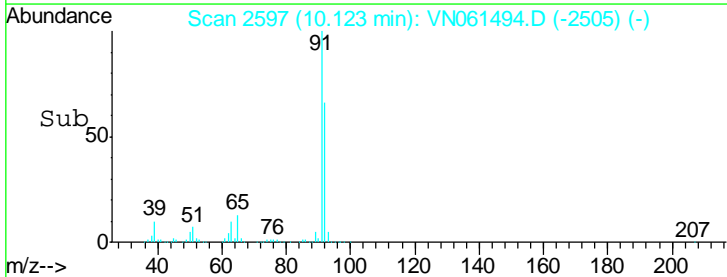
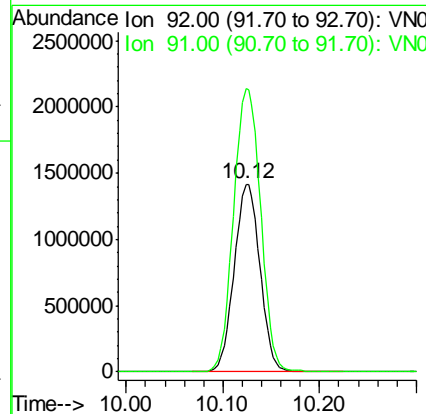
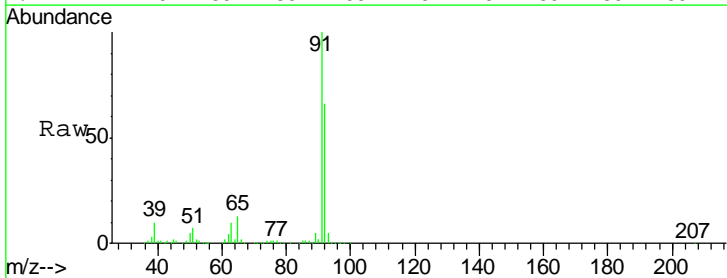
Instrument :
 MSVOA_N
 ClientSampled :
 MW-2DL

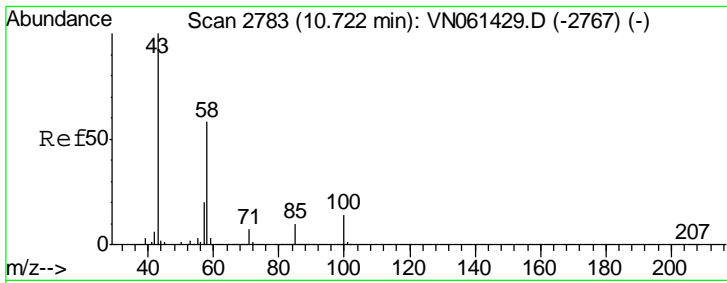
Tgt Ion: 98 Resp: 684688
 Ion Ratio Lower Upper
 98 100
 100 66.0 51.8 77.8



#52
 Toluene
 Concen: 260.858 ug/l
 RT: 10.12 min Scan# 2597
 Delta R.T. -0.00 min
 Lab File: VN061494.D
 Acq: 19 May 2020 19:27

Tgt Ion: 92 Resp: 2624128
 Ion Ratio Lower Upper
 92 100
 91 158.9 138.0 207.0

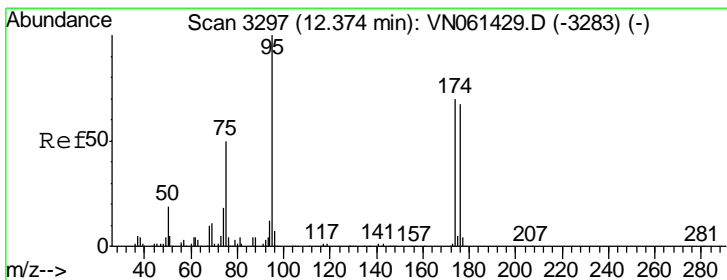
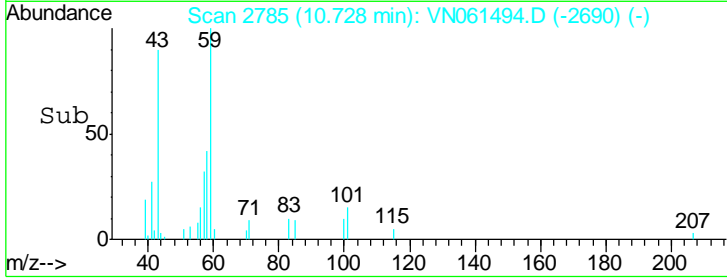
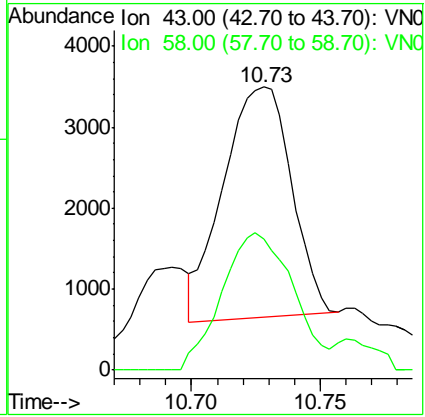
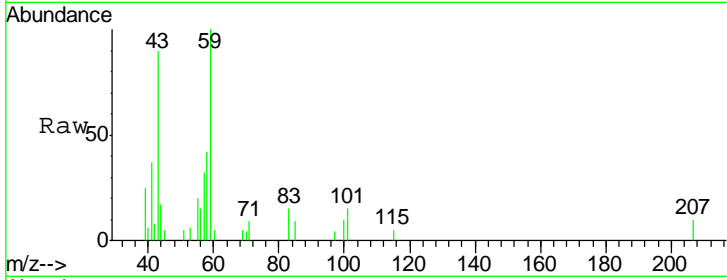




#59
 2-Hexanone
 Concen: 1.629 ug/l
 RT: 10.73 min Scan# 2785
 Delta R.T. 0.01 min
 Lab File: VN061494.D
 Acq: 19 May 2020 19:27

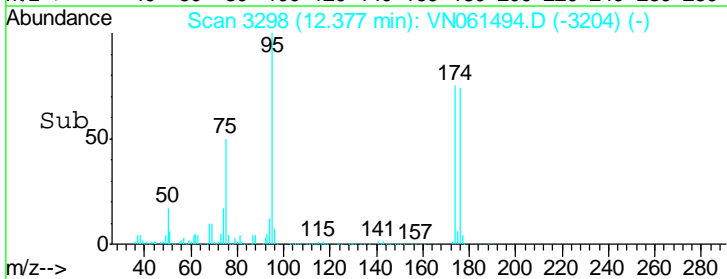
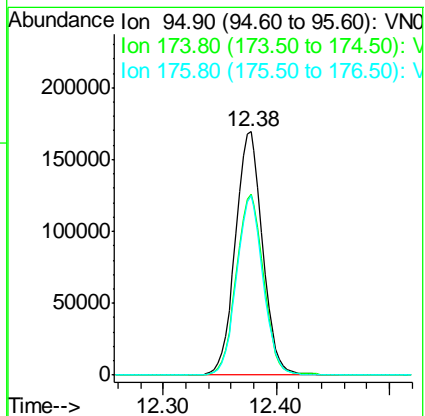
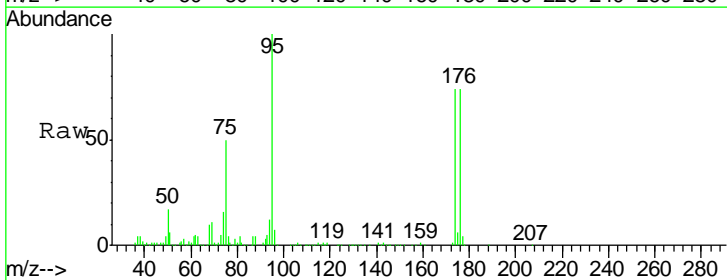
Instrument : MSVOA_N
 ClientSampled : MW-2DL

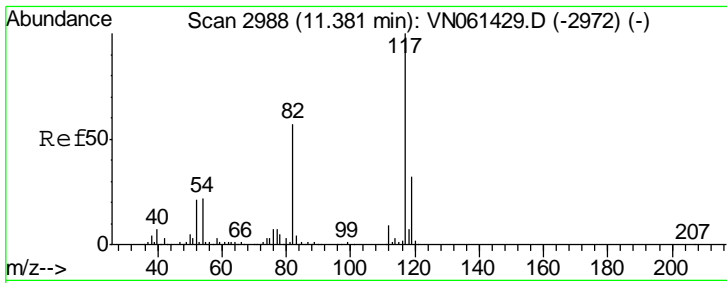
Tgt Ion: 43 Resp: 5279
 Ion Ratio Lower Upper
 43 100
 58 62.0 29.2 87.6



#62
 4-Bromofluorobenzene
 Concen: 55.801 ug/l
 RT: 12.38 min Scan# 3298
 Delta R.T. 0.00 min
 Lab File: VN061494.D
 Acq: 19 May 2020 19:27

Tgt Ion: 95 Resp: 281680
 Ion Ratio Lower Upper
 95 100
 174 74.2 0.0 141.2
 176 72.3 0.0 137.6

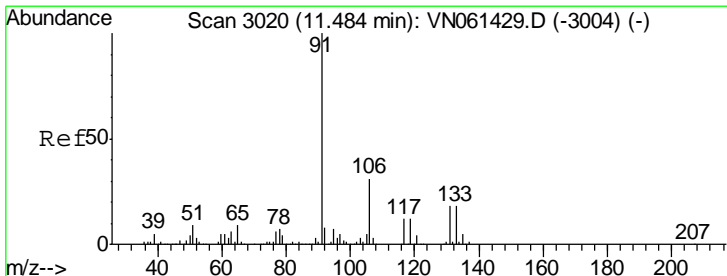
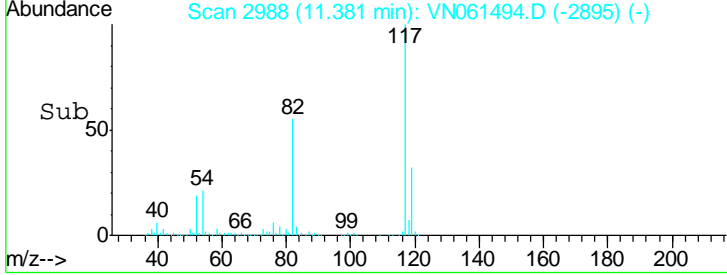
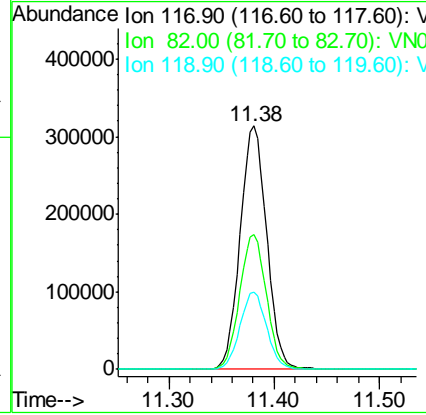
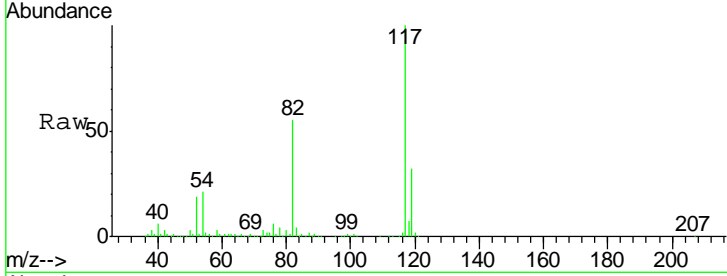




#63
 Chlorobenzene-d5
 Concen: 50.000 ug/l
 RT: 11.38 min Scan# 2988
 Delta R.T. -0.00 min
 Lab File: VN061494.D
 Acq: 19 May 2020 19:27

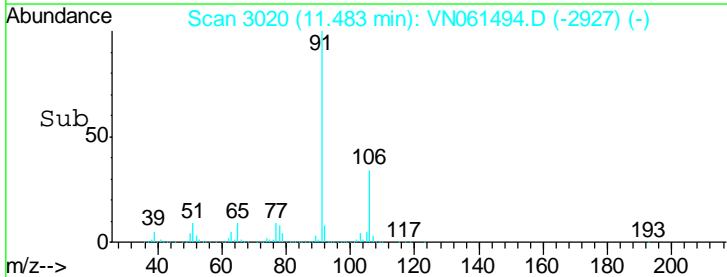
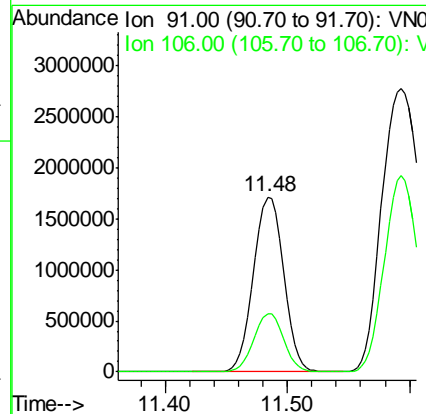
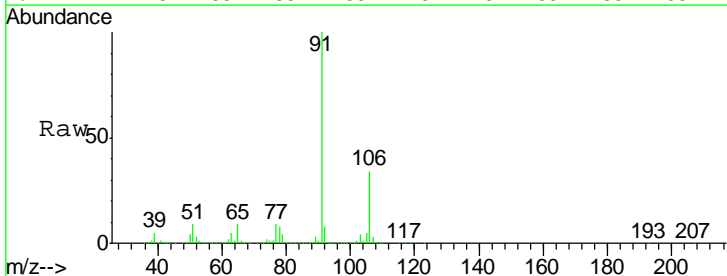
Instrument :
 MSVOA_N
 ClientSampled :
 MW-2DL

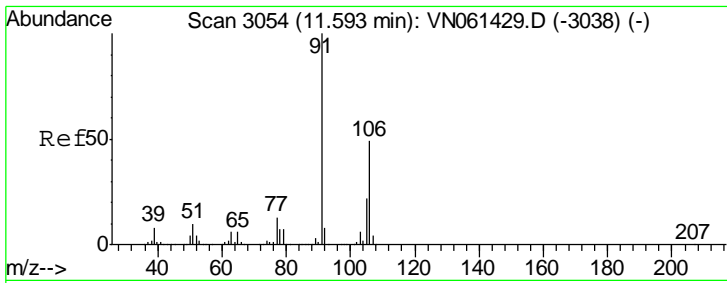
Tgt Ion	Resp	Lower	Upper
117	548435		
82	100	45.2	67.8
119	31.8	25.3	37.9



#67
 Ethyl Benzene
 Concen: 143.730 ug/l
 RT: 11.48 min Scan# 3020
 Delta R.T. -0.00 min
 Lab File: VN061494.D
 Acq: 19 May 2020 19:27

Tgt Ion	Resp	Lower	Upper
91	2934229		
106	100	24.6	36.8

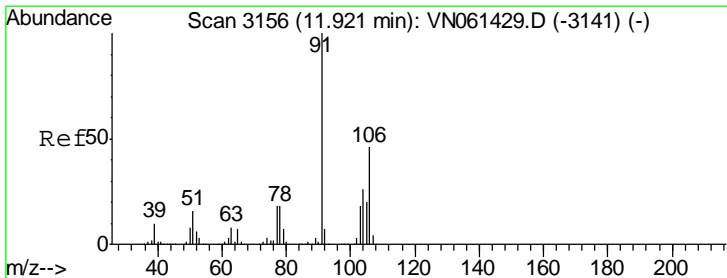
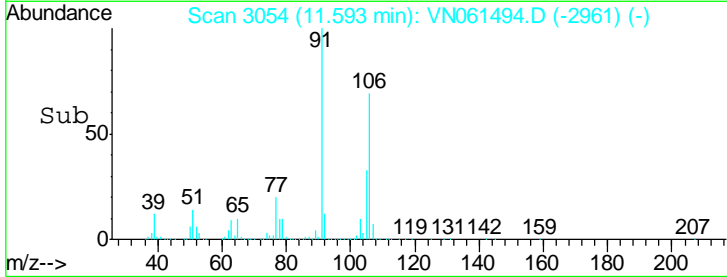
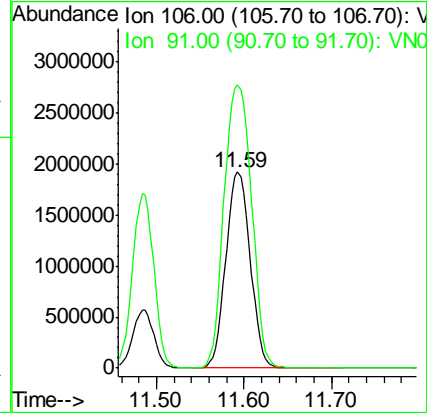
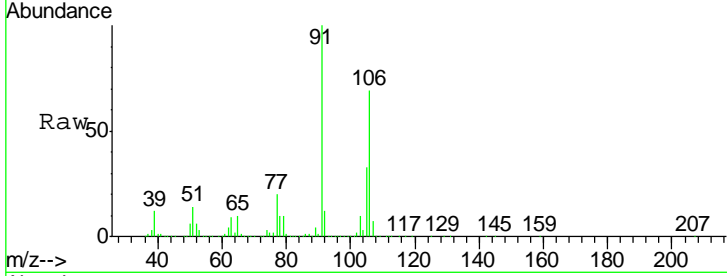




#68
 m/p-Xylenes
 Concen: 480.282 ug/l
 RT: 11.59 min Scan# 3054
 Delta R.T. -0.00 min
 Lab File: VN061494.D
 Acq: 19 May 2020 19:27

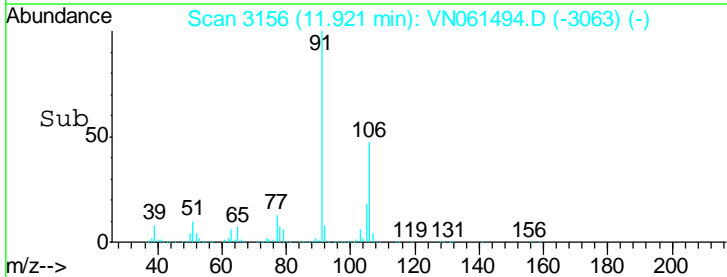
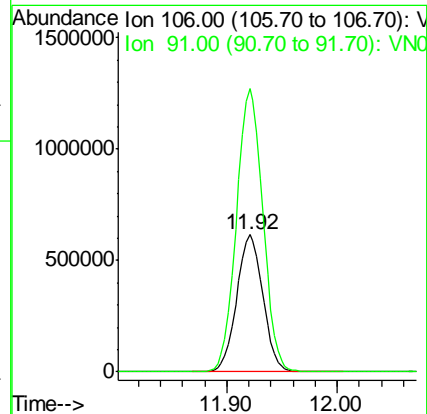
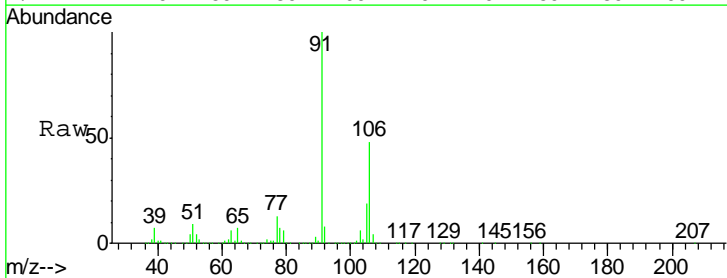
Instrument :
 MSVOA_N
 ClientSampled :
 MW-2DL

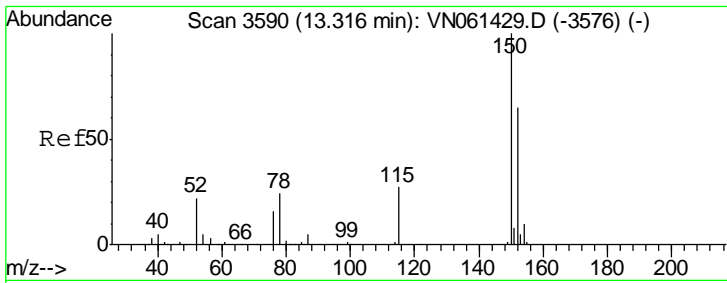
Tgt Ion:106 Resp: 3721671
 Ion Ratio Lower Upper
 106 100
 91 163.0 163.0 244.6#



#69
 o-Xylene
 Concen: 134.914 ug/l
 RT: 11.92 min Scan# 3156
 Delta R.T. -0.00 min
 Lab File: VN061494.D
 Acq: 19 May 2020 19:27

Tgt Ion:106 Resp: 1011686
 Ion Ratio Lower Upper
 106 100
 91 209.1 107.9 323.7

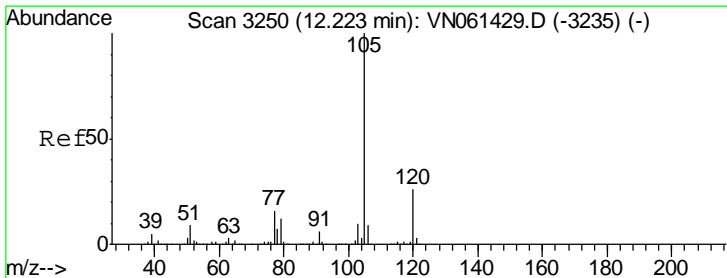
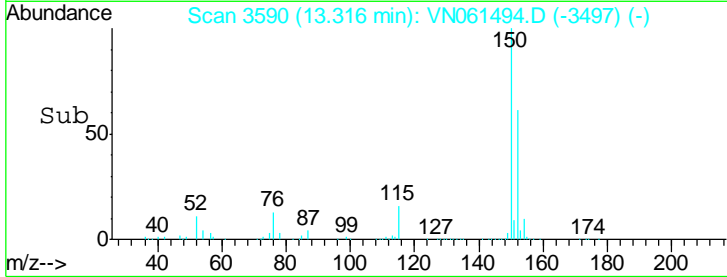
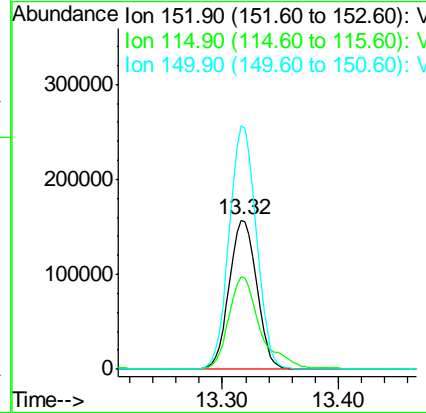
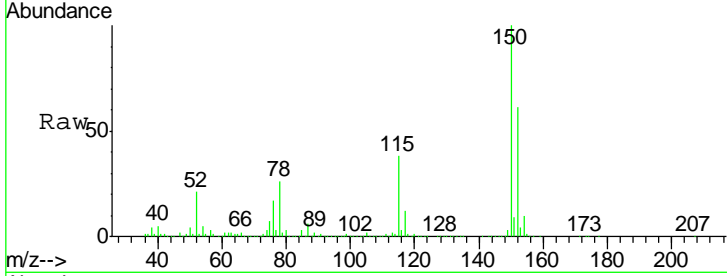




#72
 1,4-Dichlorobenzene-d4
 Concen: 50.000 ug/l
 RT: 13.32 min Scan# 3590
 Delta R.T. -0.00 min
 Lab File: VN061494.D
 Acq: 19 May 2020 19:27

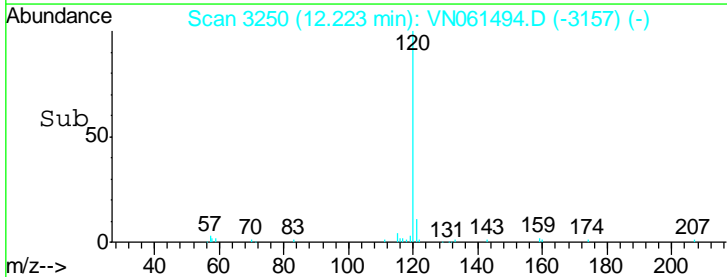
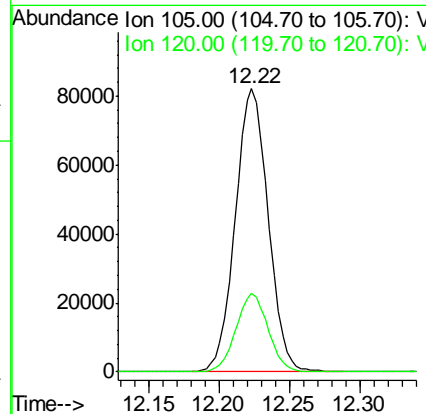
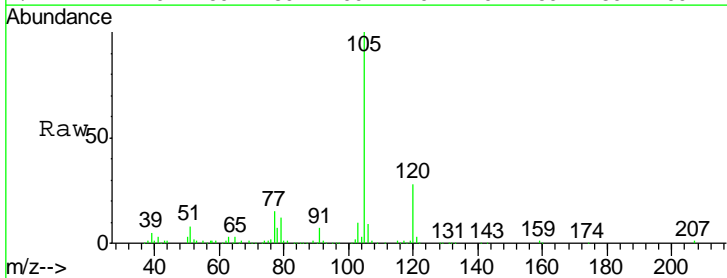
Instrument :
 MSVOA_N
 ClientSampled :
 MW-2DL

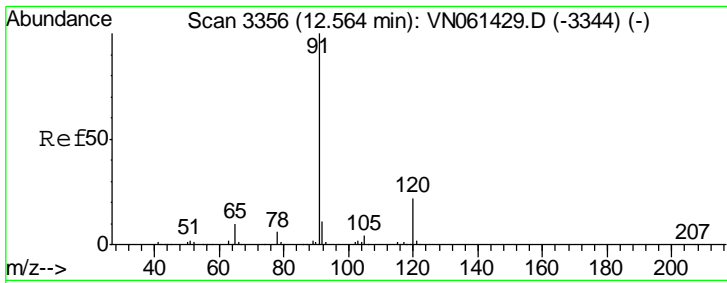
Tgt Ion	Resp	Lower	Upper
152	100		
115	69.7	30.9	92.5
150	161.2	0.0	349.2



#73
 Isopropylbenzene
 Concen: 6.447 ug/l
 RT: 12.22 min Scan# 3250
 Delta R.T. -0.00 min
 Lab File: VN061494.D
 Acq: 19 May 2020 19:27

Tgt Ion	Resp	Lower	Upper
105	100		
120	27.1	13.0	39.0

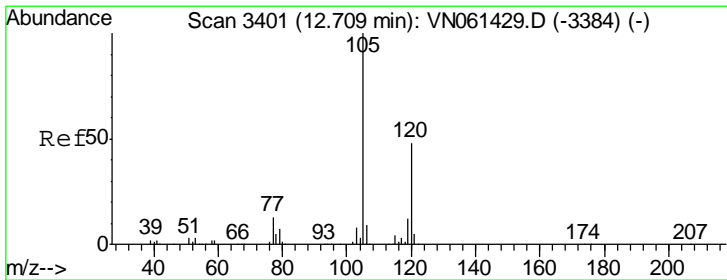
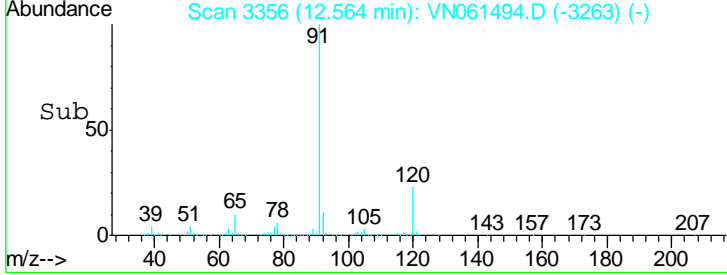
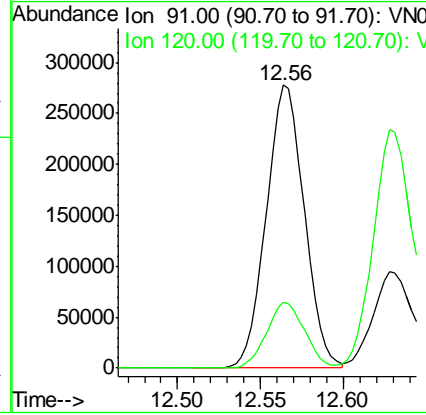
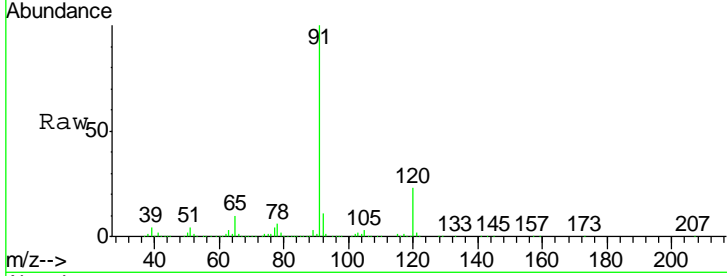




#78
 n-propylbenzene
 Concen: 18.861 ug/l
 RT: 12.56 min Scan# 3356
 Delta R.T. -0.00 min
 Lab File: VN061494.D
 Acq: 19 May 2020 19:27

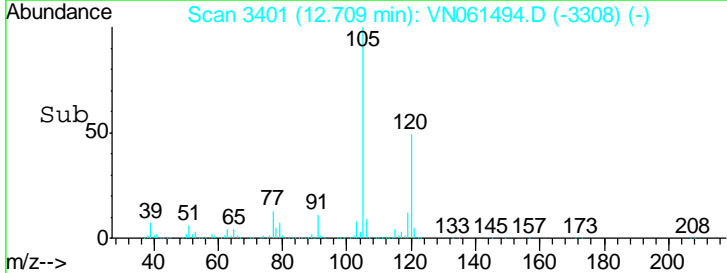
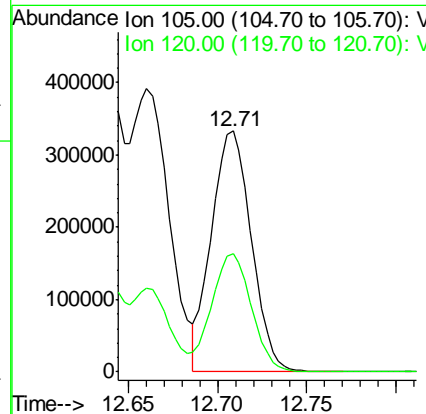
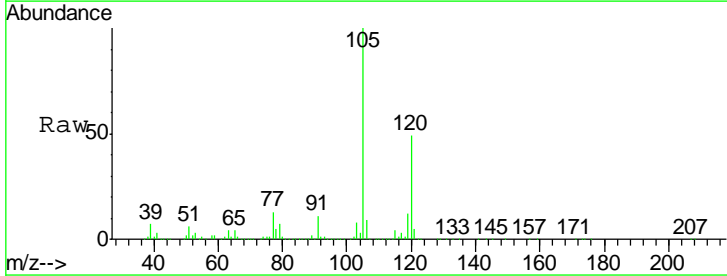
Instrument :
 MSVOA_N
 ClientSampled :
 MW-2DL

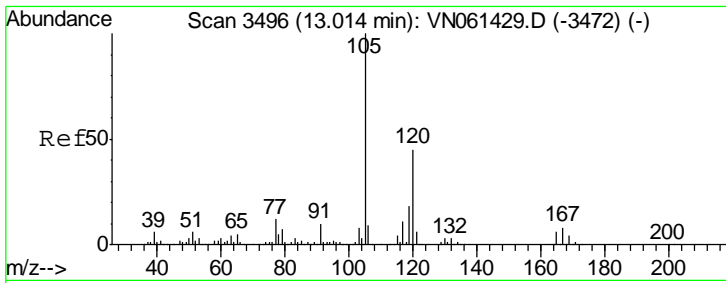
Tgt Ion	Resp	Lower	Upper
91	100		
120	23.4	11.2	33.6



#80
 1,3,5-Trimethylbenzene
 Concen: 30.376 ug/l
 RT: 12.71 min Scan# 3401
 Delta R.T. -0.00 min
 Lab File: VN061494.D
 Acq: 19 May 2020 19:27

Tgt Ion	Resp	Lower	Upper
105	100		
120	49.5	24.1	72.4

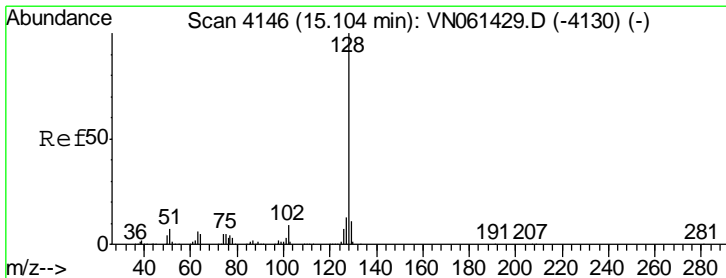
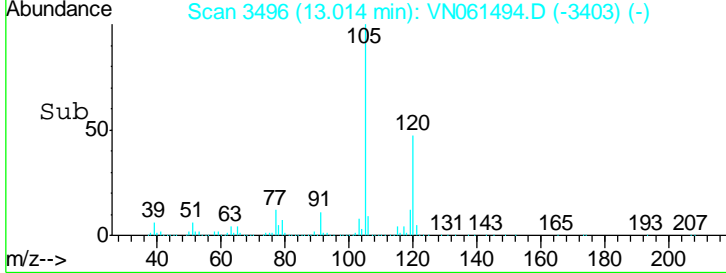
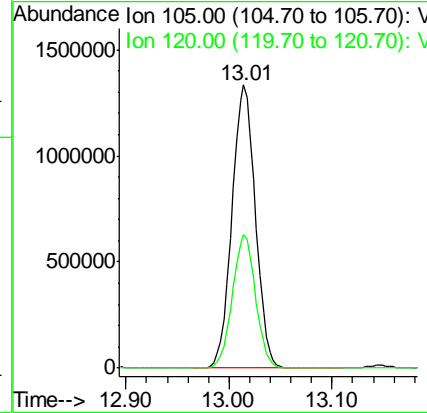
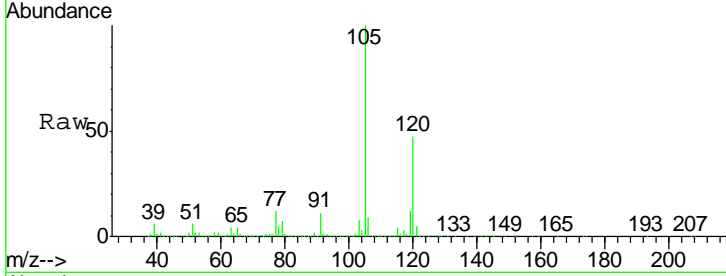




#84
 1,2,4-Trimethylbenzene
 Concen: 124.520 ug/l
 RT: 13.01 min Scan# 3496
 Delta R.T. -0.00 min
 Lab File: VN061494.D
 Acq: 19 May 2020 19:27

Instrument :
 MSVOA_N
 ClientSampled :
 MW-2DL

Tgt Ion:105 Resp: 2108473
 Ion Ratio Lower Upper
 105 100
 120 46.5 22.4 67.3



#95
 Naphthalene
 Concen: 26.805 ug/l
 RT: 15.10 min Scan# 4146
 Delta R.T. -0.00 min
 Lab File: VN061494.D
 Acq: 19 May 2020 19:27

Tgt Ion:128 Resp: 363765
 Ion Ratio Lower Upper
 128 100
 127 13.2 10.1 15.1
 129 10.9 8.6 13.0

