

Data Path : Z:\voasrv\HPCHEM1\MSVOA_N\Data\VN051925\
 Data File : VN086685.D
 Acq On : 19 May 2025 13:26
 Operator : JC\MD
 Sample : PB168034ZHE#02
 Misc : 5.0mL/MSVOA_N/WATER
 ALS Vial : 9 Sample Multiplier: 1

Instrument :
 MSVOA_N
 ClientSampleId :
 PB168034ZHE#02

Quant Time: May 20 03:18:04 2025
 Quant Method : Z:\voasrv\HPCHEM1\MSVOA_N\methods\82N051625W.M
 Quant Title : SW846 8260
 QLast Update : Sat May 17 00:46:13 2025
 Response via : Initial Calibration

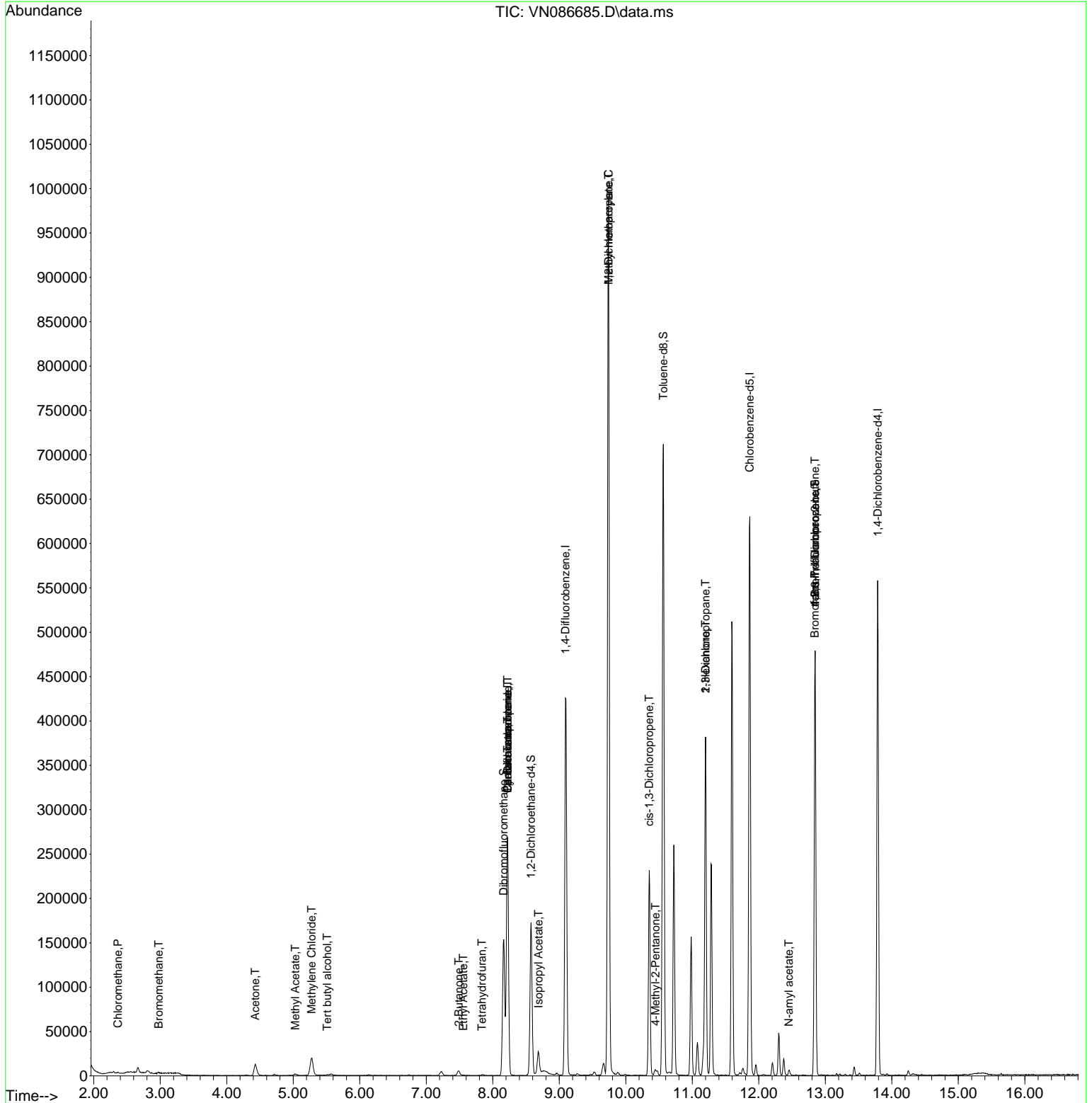
| Compound | R.T. | QIon | Response | Conc Units | Dev(Min) |
|-------------------------------|--------|----------------|----------|---------------|----------|
| Internal Standards | | | | | |
| 1) Pentafluorobenzene | 8.224 | 168 | 203542 | 50.000 ug/l | 0.00 |
| 34) 1,4-Difluorobenzene | 9.094 | 114 | 387838 | 50.000 ug/l | 0.00 |
| 63) Chlorobenzene-d5 | 11.865 | 117 | 379048 | 50.000 ug/l | 0.00 |
| 72) 1,4-Dichlorobenzene-d4 | 13.788 | 152 | 155368 | 50.000 ug/l | 0.00 |
| System Monitoring Compounds | | | | | |
| 33) 1,2-Dichloroethane-d4 | 8.577 | 65 | 141560 | 50.331 ug/l | 0.00 |
| Spiked Amount | 50.000 | Range 74 - 125 | Recovery | = 100.660% | |
| 35) Dibromofluoromethane | 8.165 | 113 | 115538 | 50.022 ug/l | 0.00 |
| Spiked Amount | 50.000 | Range 75 - 124 | Recovery | = 100.040% | |
| 50) Toluene-d8 | 10.565 | 98 | 504636 | 52.722 ug/l | 0.00 |
| Spiked Amount | 50.000 | Range 86 - 113 | Recovery | = 105.440% | |
| 62) 4-Bromofluorobenzene | 12.847 | 95 | 181407 | 53.675 ug/l | 0.00 |
| Spiked Amount | 50.000 | Range 77 - 121 | Recovery | = 107.360% | |
| Target Compounds | | | | | |
| | | | | | Qvalue |
| 3) Chloromethane | 2.365 | 50 | 1023 | 0.308 ug/l | 90 |
| 5) Bromomethane | 2.977 | 94 | 554 | 0.322 ug/l | 81 |
| 11) Tert butyl alcohol | 5.512 | 59 | 1248 | 2.436 ug/l # | 73 |
| 16) Acetone | 4.430 | 43 | 24847 | 23.617 ug/l | 97 |
| 18) Methyl Acetate | 5.030 | 43 | 3327 | 1.130 ug/l # | 89 |
| 20) Methylene Chloride | 5.277 | 84 | 16796 | 6.050 ug/l | 96 |
| 25) 2-Butanone | 7.489 | 43 | 9778 | 6.014 ug/l | 91 |
| 29) Tetrahydrofuran | 7.836 | 42 | 996 | 0.939 ug/l # | 46 |
| 31) Cyclohexane | 8.224 | 56 | 4258 | 1.009 ug/l # | 1 |
| 36) 1,1-Dichloropropene | 8.224 | 75 | 16611 | 4.876 ug/l # | 50 |
| 37) Ethyl Acetate | 7.559 | 43 | 807 | 0.234 ug/l # | 67 |
| 38) Carbon Tetrachloride | 8.224 | 117 | 20018 | 5.963 ug/l # | 15 |
| 43) Isopropyl Acetate | 8.688 | 43 | 34085 | 4.940 ug/l # | 86 |
| 45) 1,2-Dichloropropane | 9.741 | 63 | 1286 | 0.487 ug/l # | 42 |
| 48) Methyl methacrylate | 9.741 | 41 | 86575 | 32.383 ug/l # | 37 |
| 51) 4-Methyl-2-Pentanone | 10.447 | 43 | 4684 | 1.346 ug/l | 87 |
| 54) cis-1,3-Dichloropropene | 10.353 | 75 | 44881 | 10.579 ug/l # | 57 |
| 57) 1,3-Dichloropropane | 11.200 | 76 | 4121 | 0.928 ug/l # | 42 |
| 59) 2-Hexanone | 11.200 | 43 | 76554 | 30.131 ug/l # | 42 |
| 71) Bromoform | 12.841 | 173 | 904 | 0.474 ug/l # | 1 |
| 74) N-amyl acetate | 12.453 | 43 | 5035 | 1.004 ug/l # | 41 |
| 76) 1,2,3-Trichloropropane | 12.847 | 75 | 87767 | 24.978 ug/l # | 1 |
| 81) trans-1,4-Dichloro-2-b... | 12.847 | 75 | 87767 | 63.036 ug/l # | 15 |

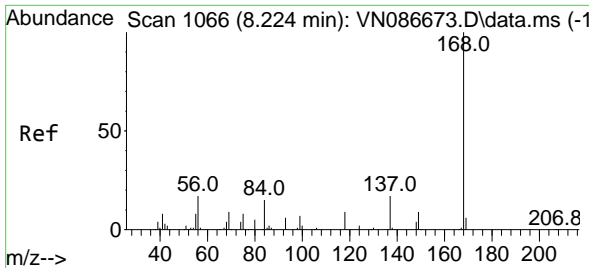
(#) = qualifier out of range (m) = manual integration (+) = signals summed

Data Path : Z:\voasrv\HPCHEM1\MSVOA_N\Data\VN051925\
 Data File : VN086685.D
 Acq On : 19 May 2025 13:26
 Operator : JC\MD
 Sample : PB168034ZHE#02
 Misc : 5.0mL/MSVOA_N/WATER
 ALS Vial : 9 Sample Multiplier: 1

Instrument :
 MSVOA_N
 ClientSampleId :
 PB168034ZHE#02

Quant Time: May 20 03:18:04 2025
 Quant Method : Z:\voasrv\HPCHEM1\MSVOA_N\methods\82N051625W.M
 Quant Title : SW846 8260
 QLast Update : Sat May 17 00:46:13 2025
 Response via : Initial Calibration

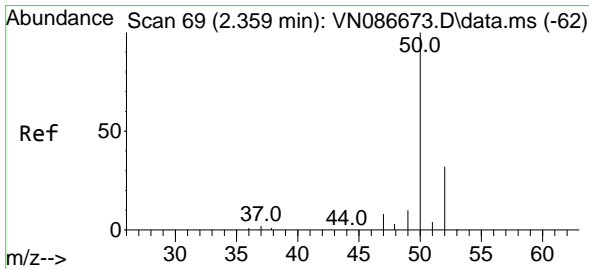
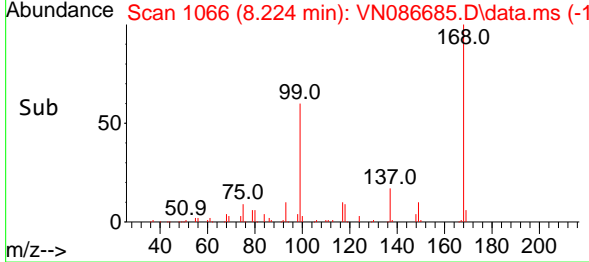
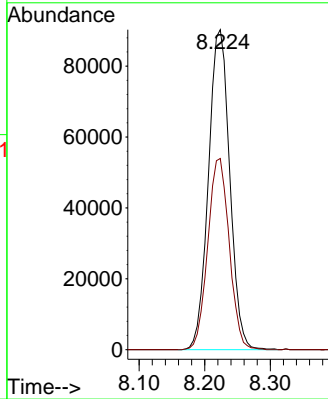
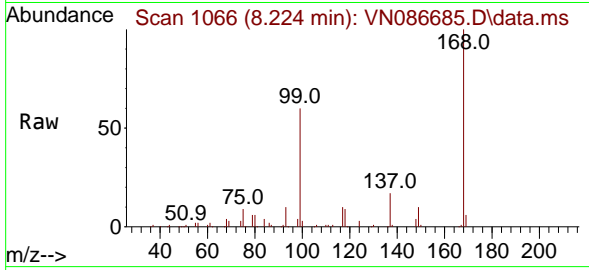




#1
 Pentafluorobenzene
 Concen: 50.000 ug/l
 RT: 8.224 min Scan# 10
 Delta R.T. -0.000 min
 Lab File: VN086685.D
 Acq: 19 May 2025 13:26

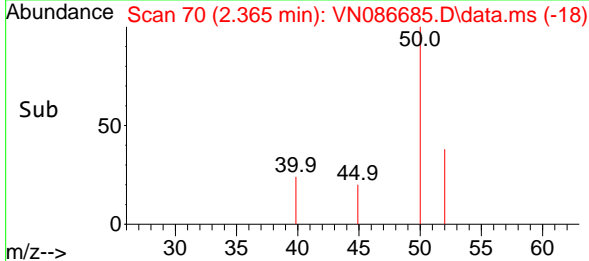
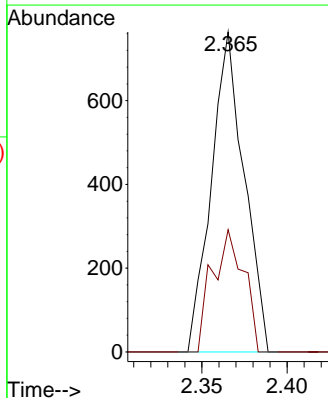
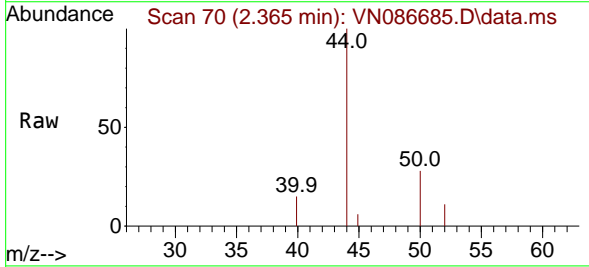
Instrument : MSVOA_N
 ClientSampleId : PB168034ZHE#02

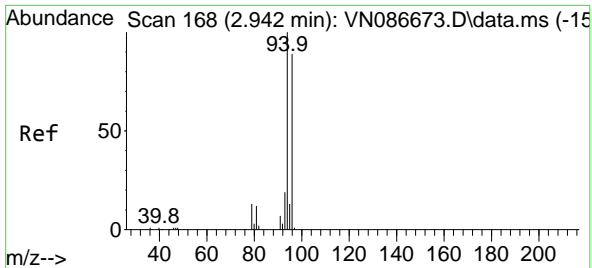
Tgt Ion:168 Resp: 203542
 Ion Ratio Lower Upper
 168 100
 99 59.8 47.0 70.4



#3
 Chloromethane
 Concen: 0.308 ug/l
 RT: 2.365 min Scan# 70
 Delta R.T. 0.006 min
 Lab File: VN086685.D
 Acq: 19 May 2025 13:26

Tgt Ion: 50 Resp: 1023
 Ion Ratio Lower Upper
 50 100
 52 38.2 25.9 38.9

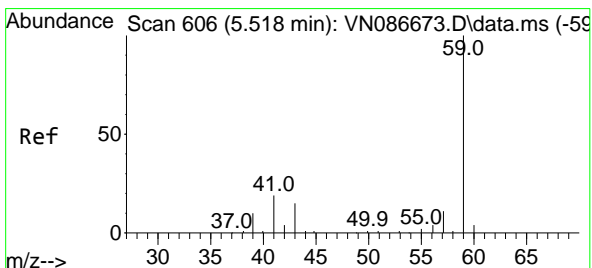
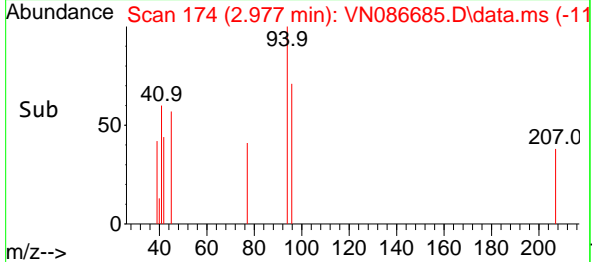
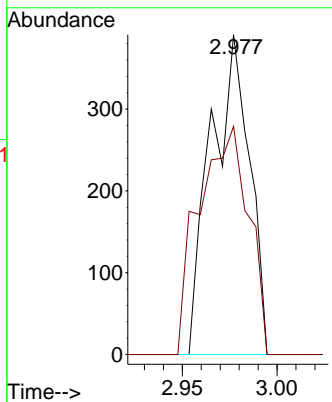
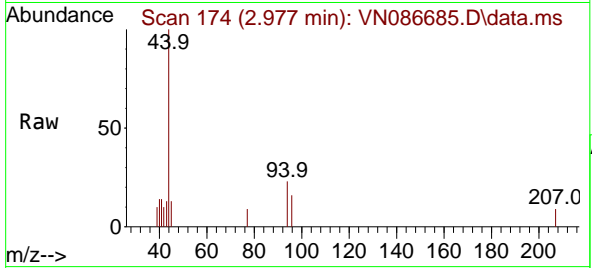




#5
 Bromomethane
 Concen: 0.322 ug/l
 RT: 2.977 min Scan# 11
 Delta R.T. 0.035 min
 Lab File: VN086685.D
 Acq: 19 May 2025 13:26

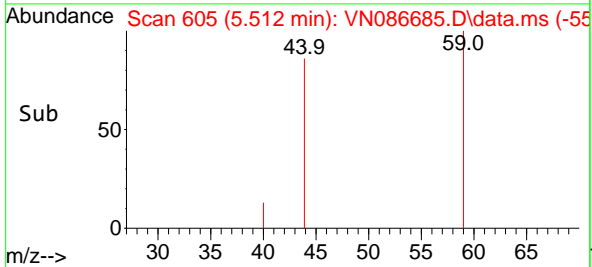
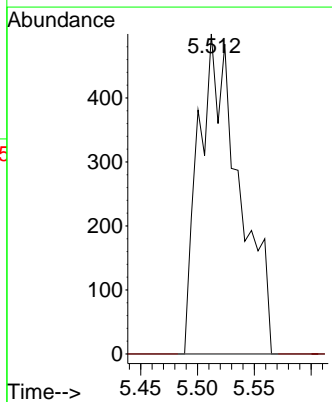
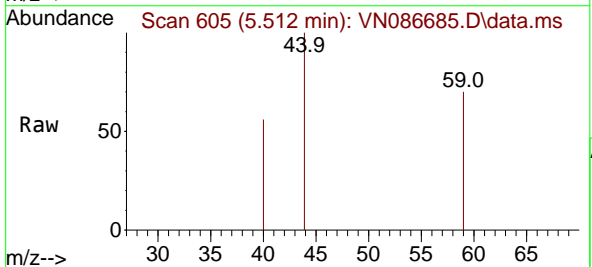
Instrument :
 MSVOA_N
 ClientSampleId :
 PB168034ZHE#02

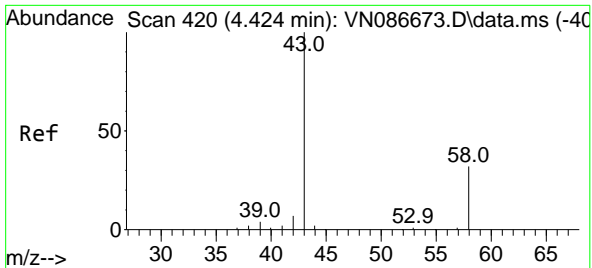
Tgt Ion: 94 Resp: 554
 Ion Ratio Lower Upper
 94 100
 96 71.4 71.2 106.8



#11
 Tert butyl alcohol
 Concen: 2.436 ug/l
 RT: 5.512 min Scan# 605
 Delta R.T. -0.006 min
 Lab File: VN086685.D
 Acq: 19 May 2025 13:26

Tgt Ion: 59 Resp: 1248
 Ion Ratio Lower Upper
 59 100
 57 0.0 8.2 12.2#

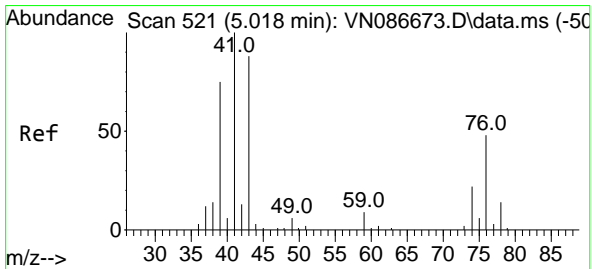
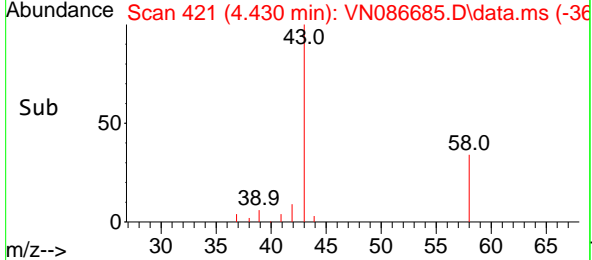
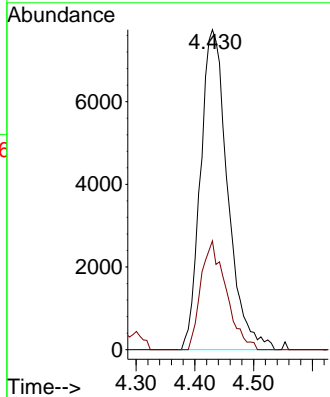
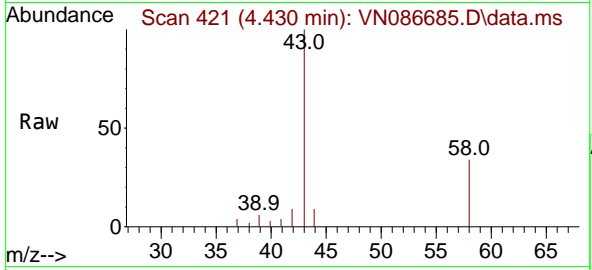




#16
 Acetone
 Concen: 23.617 ug/l
 RT: 4.430 min Scan# 41
 Delta R.T. 0.006 min
 Lab File: VN086685.D
 Acq: 19 May 2025 13:26

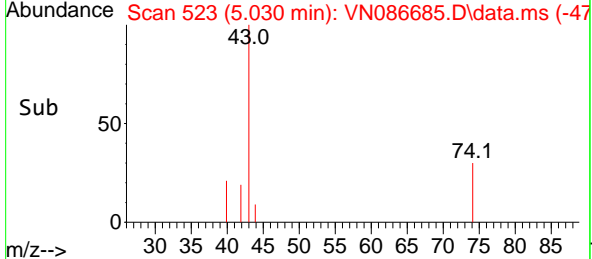
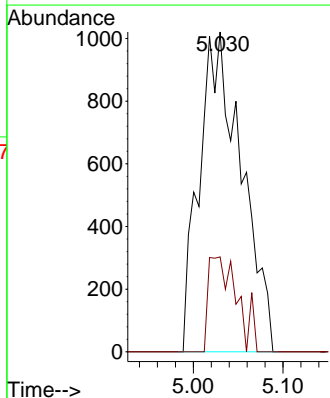
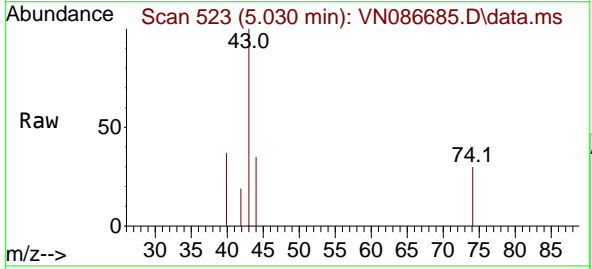
Instrument : MSVOA_N
 ClientSampleId : PB168034ZHE#02

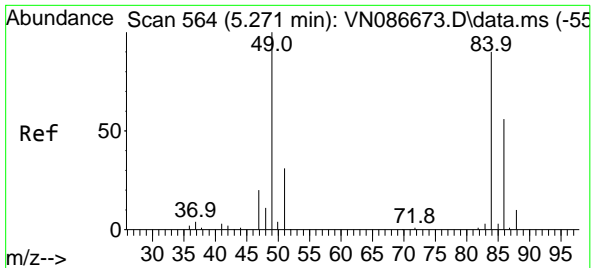
Tgt Ion: 43 Resp: 24847
 Ion Ratio Lower Upper
 43 100
 58 34.0 25.8 38.6



#18
 Methyl Acetate
 Concen: 1.130 ug/l
 RT: 5.030 min Scan# 523
 Delta R.T. 0.012 min
 Lab File: VN086685.D
 Acq: 19 May 2025 13:26

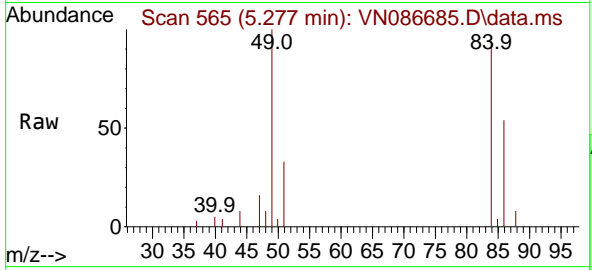
Tgt Ion: 43 Resp: 3327
 Ion Ratio Lower Upper
 43 100
 74 20.3 20.5 30.7#





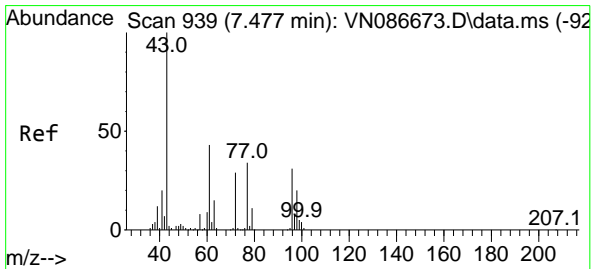
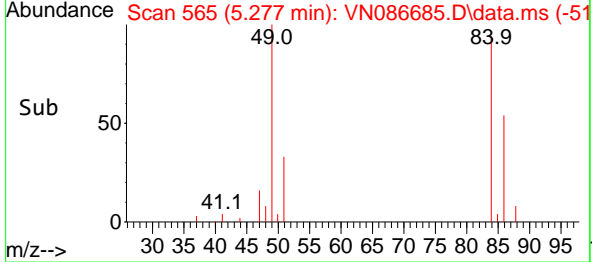
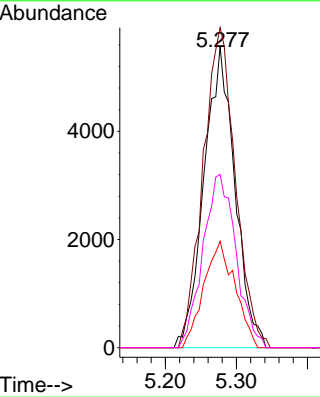
#20
 Methylene Chloride
 Concen: 6.050 ug/l
 RT: 5.277 min Scan# 501
 Delta R.T. 0.006 min
 Lab File: VN086685.D
 Acq: 19 May 2025 13:26

Instrument : MSVOA_N
 ClientSampleId : PB168034ZHE#02

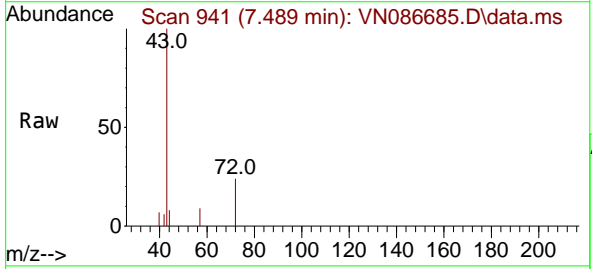


Tgt Ion: 84 Resp: 16796

| Ion | Ratio | Lower | Upper |
|-----|-------|-------|-------|
| 84 | 100 | | |
| 49 | 106.2 | 88.8 | 133.2 |
| 51 | 35.3 | 27.8 | 41.6 |
| 86 | 57.5 | 49.8 | 74.6 |

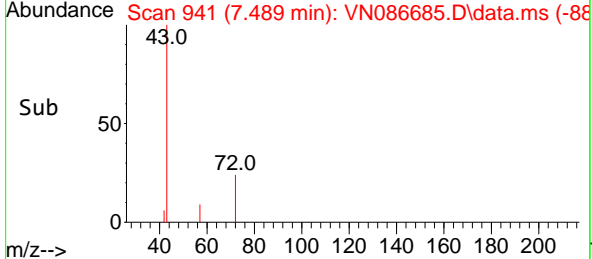
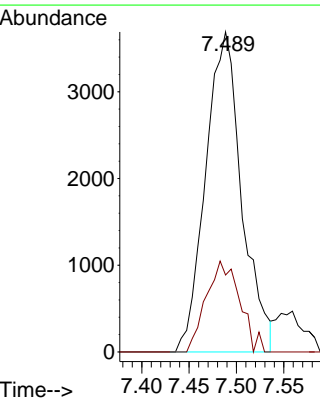


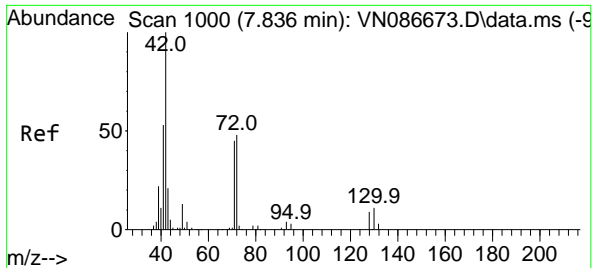
#25
 2-Butanone
 Concen: 6.014 ug/l
 RT: 7.489 min Scan# 941
 Delta R.T. 0.012 min
 Lab File: VN086685.D
 Acq: 19 May 2025 13:26



Tgt Ion: 43 Resp: 9778

| Ion | Ratio | Lower | Upper |
|-----|-------|-------|-------|
| 43 | 100 | | |
| 72 | 24.1 | 23.1 | 34.7 |

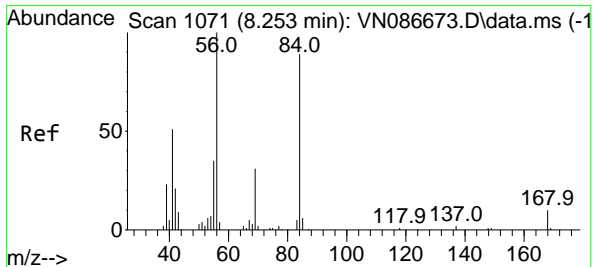
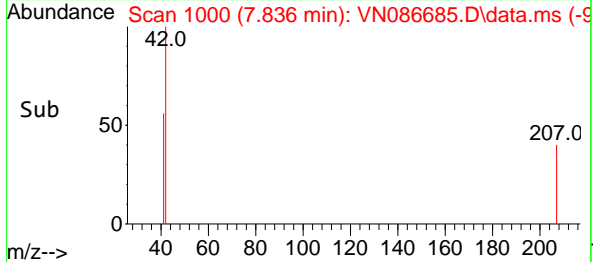
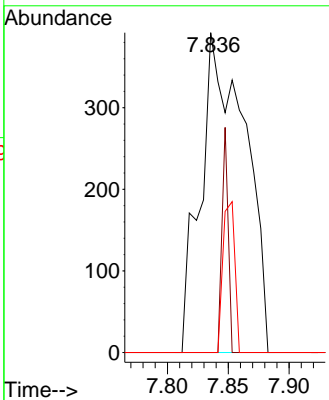
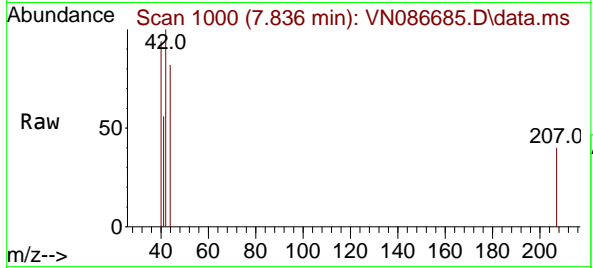




#29
 Tetrahydrofuran
 Concen: 0.939 ug/l
 RT: 7.836 min Scan# 1066
 Delta R.T. 0.000 min
 Lab File: VN086685.D
 Acq: 19 May 2025 13:26

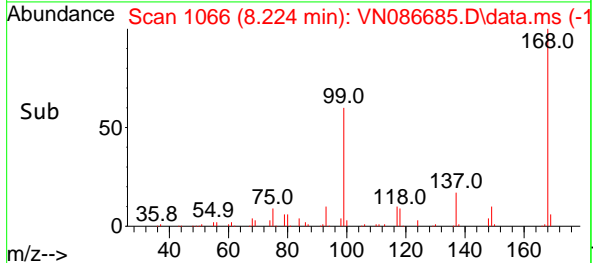
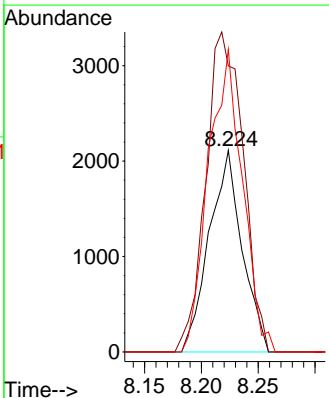
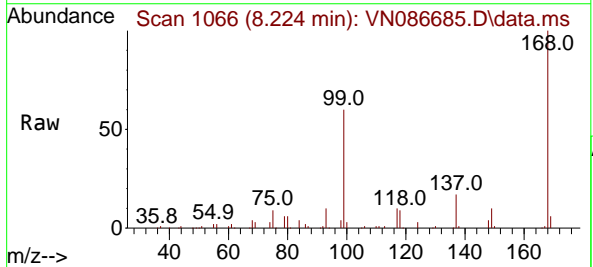
Instrument : MSVOA_N
 ClientSampleId : PB168034ZHE#02

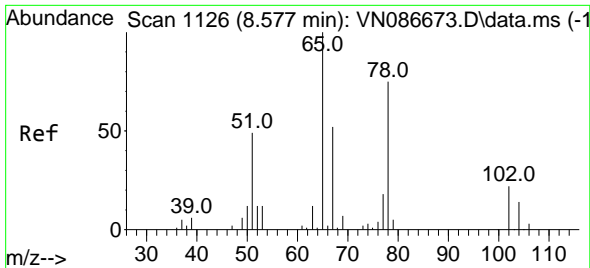
| Tgt Ion | Resp | Lower | Upper |
|---------|------|-------|-------|
| 42 | 100 | | |
| 72 | 9.7 | 38.7 | 58.1# |
| 71 | 12.7 | 36.2 | 54.4# |



#31
 Cyclohexane
 Concen: 1.009 ug/l
 RT: 8.224 min Scan# 1066
 Delta R.T. -0.029 min
 Lab File: VN086685.D
 Acq: 19 May 2025 13:26

| Tgt Ion | Resp | Lower | Upper |
|---------|-------|-------|--------|
| 56 | 100 | | |
| 69 | 142.0 | 25.0 | 37.6# |
| 84 | 150.1 | 71.0 | 106.4# |

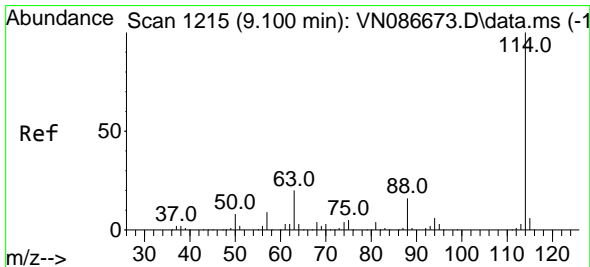
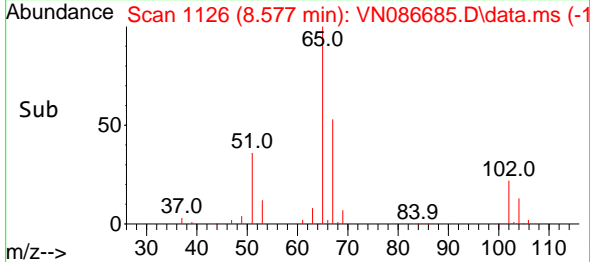
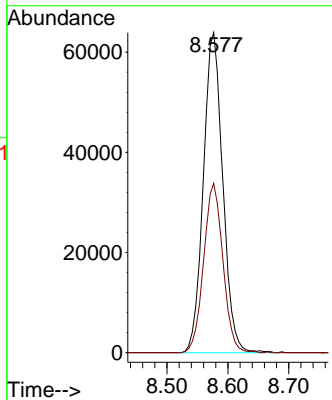
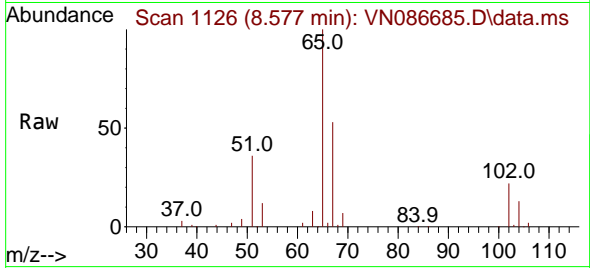




#33
 1,2-Dichloroethane-d4
 Concen: 50.331 ug/l
 RT: 8.577 min Scan# 1126
 Delta R.T. -0.000 min
 Lab File: VN086685.D
 Acq: 19 May 2025 13:26

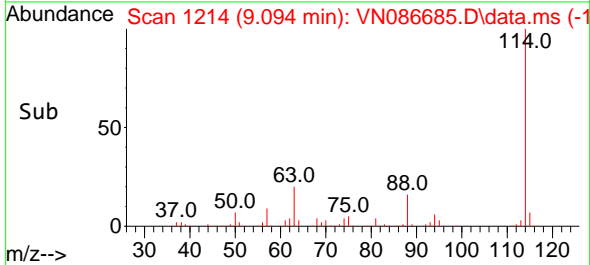
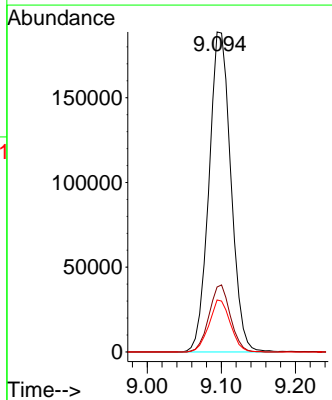
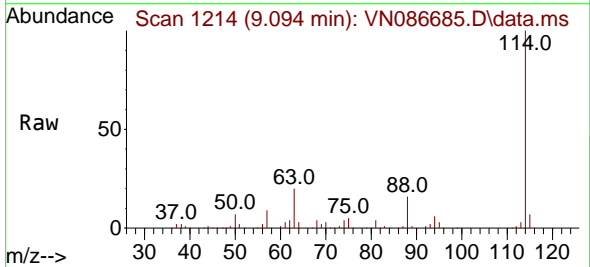
Instrument : MSVOA_N
 ClientSampleId : PB168034ZHE#02

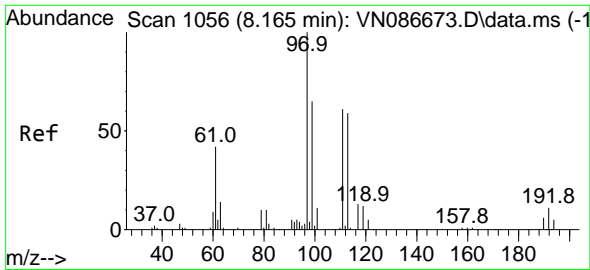
Tgt Ion: 65 Resp: 141560
 Ion Ratio Lower Upper
 65 100
 67 52.6 0.0 106.4



#34
 1,4-Difluorobenzene
 Concen: 50.000 ug/l
 RT: 9.094 min Scan# 1214
 Delta R.T. -0.006 min
 Lab File: VN086685.D
 Acq: 19 May 2025 13:26

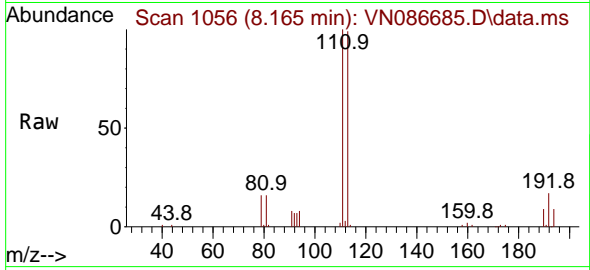
Tgt Ion:114 Resp: 387838
 Ion Ratio Lower Upper
 114 100
 63 20.3 0.0 40.2
 88 16.3 0.0 31.2



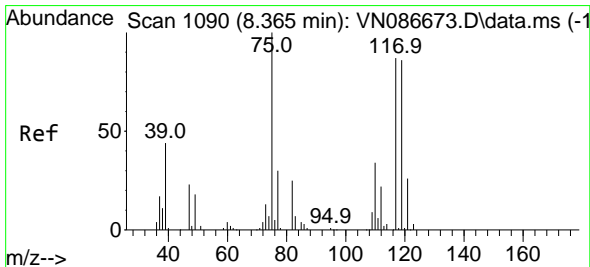
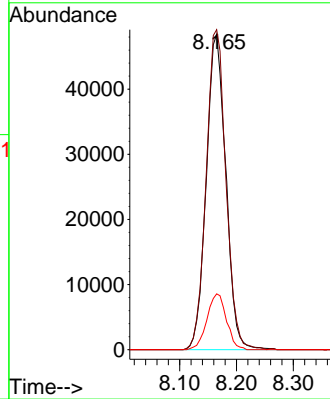
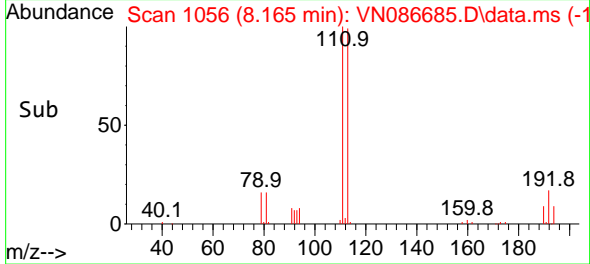


#35
 Dibromofluoromethane
 Concen: 50.022 ug/l
 RT: 8.165 min Scan# 1056
 Delta R.T. -0.000 min
 Lab File: VN086685.D
 Acq: 19 May 2025 13:26

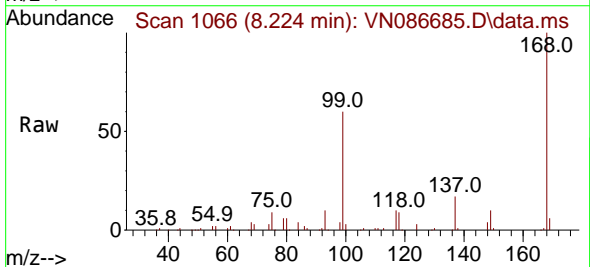
Instrument : MSVOA_N
 ClientSampleId : PB168034ZHE#02



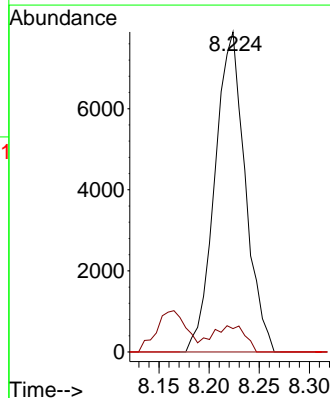
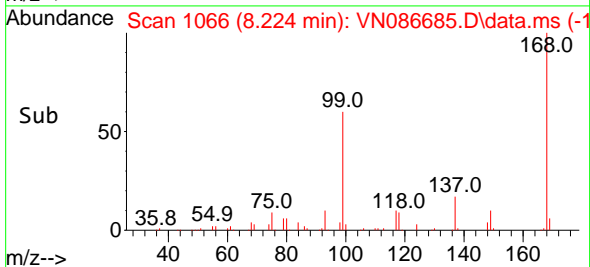
Tgt Ion:113 Resp: 115538
 Ion Ratio Lower Upper
 113 100
 111 102.4 82.2 123.2
 192 17.6 13.8 20.8

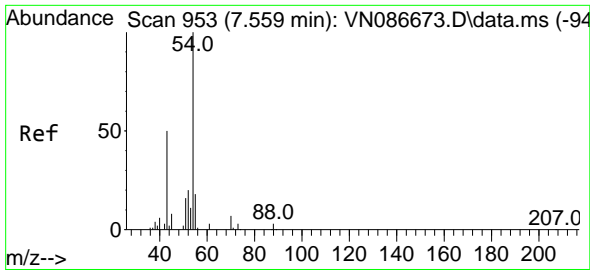


#36
 1,1-Dichloropropene
 Concen: 4.876 ug/l
 RT: 8.224 min Scan# 1066
 Delta R.T. -0.141 min
 Lab File: VN086685.D
 Acq: 19 May 2025 13:26



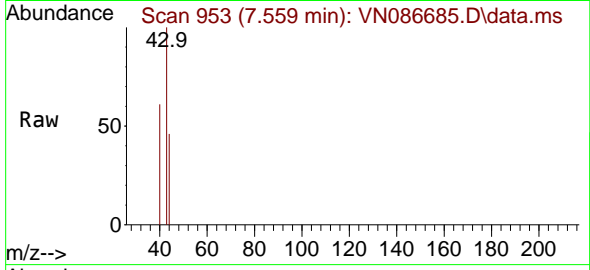
Tgt Ion: 75 Resp: 16611
 Ion Ratio Lower Upper
 75 100
 110 9.0 17.5 52.5#
 77 0.0 25.1 37.7#



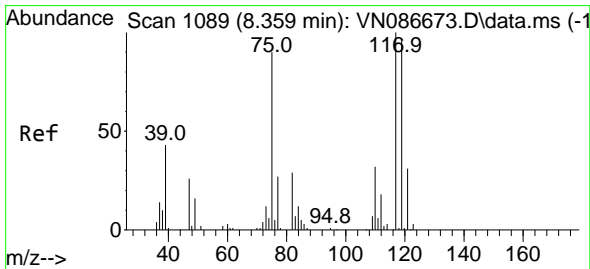
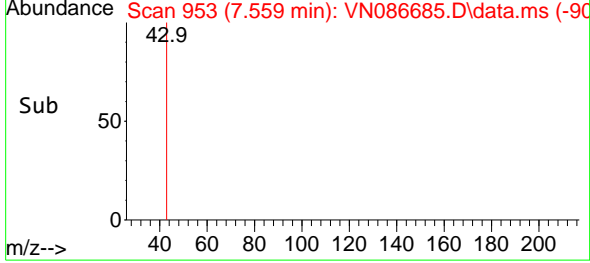
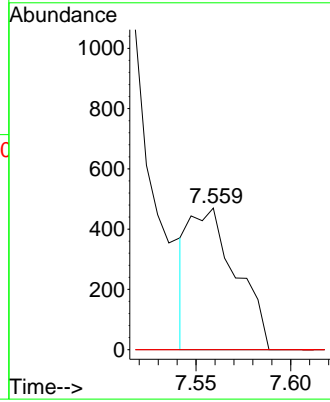


#37
 Ethyl Acetate
 Concen: 0.234 ug/l
 RT: 7.559 min Scan# 91
 Delta R.T. 0.000 min
 Lab File: VN086685.D
 Acq: 19 May 2025 13:26

Instrument :
 MSVOA_N
 ClientSampleId :
 PB168034ZHE#02

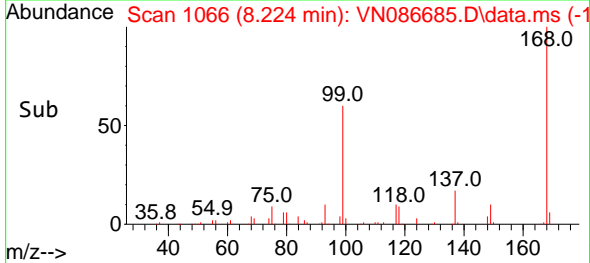
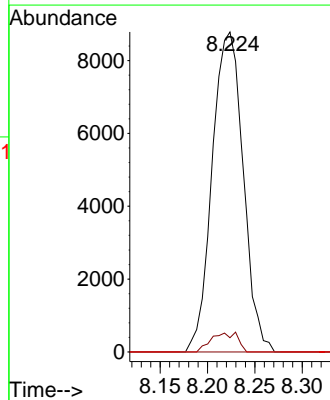
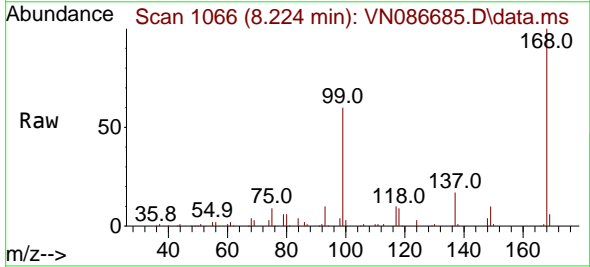


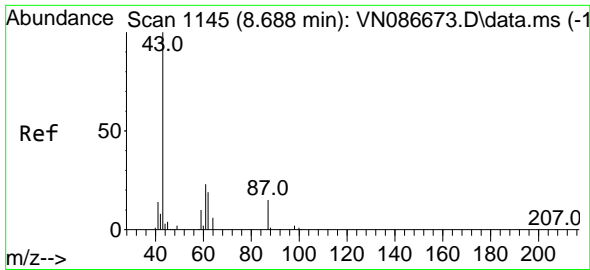
| Tgt Ion | Resp | Lower | Upper |
|---------|------|-------|-------|
| 43 | 100 | | |
| 61 | 0.0 | 11.6 | 17.4# |
| 70 | 0.0 | 9.4 | 14.0# |



#38
 Carbon Tetrachloride
 Concen: 5.963 ug/l
 RT: 8.224 min Scan# 1066
 Delta R.T. -0.135 min
 Lab File: VN086685.D
 Acq: 19 May 2025 13:26

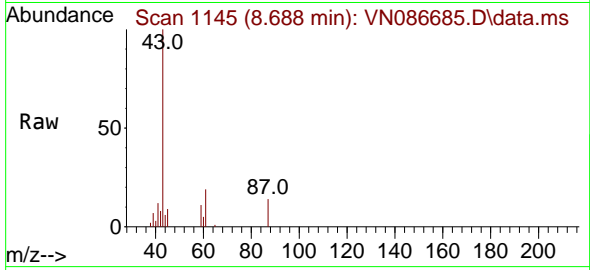
| Tgt Ion | Resp | Lower | Upper |
|---------|------|-------|--------|
| 117 | 100 | | |
| 119 | 4.5 | 77.0 | 115.6# |
| 121 | 0.0 | 25.0 | 37.6# |



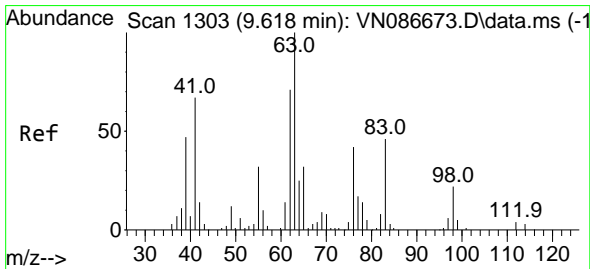
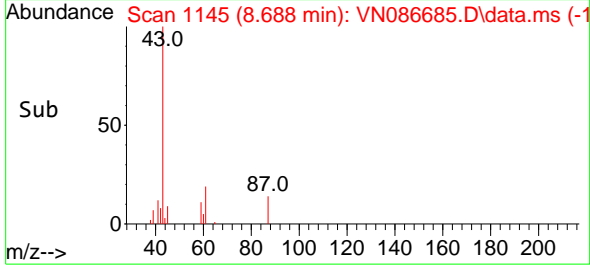
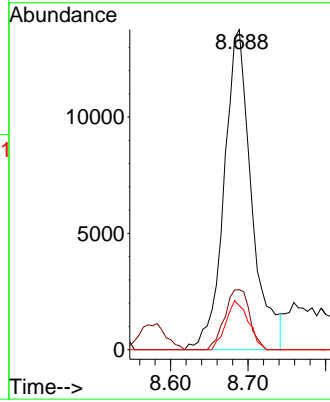


#43
 Isopropyl Acetate
 Concen: 4.940 ug/l
 RT: 8.688 min Scan# 1145
 Delta R.T. 0.000 min
 Lab File: VN086685.D
 Acq: 19 May 2025 13:26

Instrument : MSVOA_N
 ClientSampleId : PB168034ZHE#02

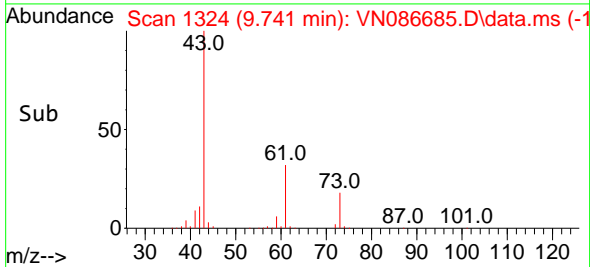
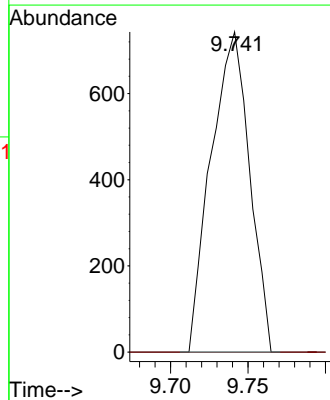
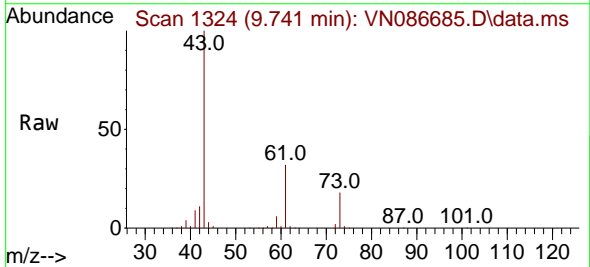


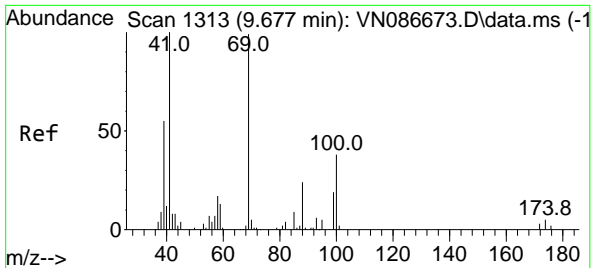
Tgt Ion: 43 Resp: 34085
 Ion Ratio Lower Upper
 43 100
 61 17.0 21.4 32.2#
 87 12.5 11.1 16.7



#45
 1,2-Dichloropropane
 Concen: 0.487 ug/l
 RT: 9.741 min Scan# 1324
 Delta R.T. 0.123 min
 Lab File: VN086685.D
 Acq: 19 May 2025 13:26

Tgt Ion: 63 Resp: 1286
 Ion Ratio Lower Upper
 63 100
 65 0.0 25.8 38.6#

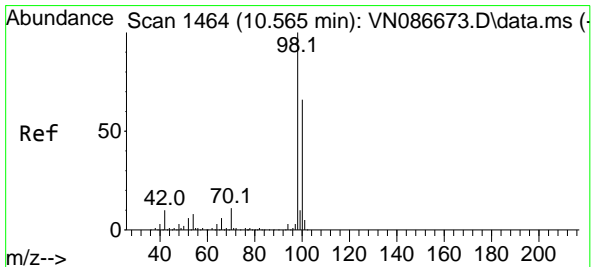
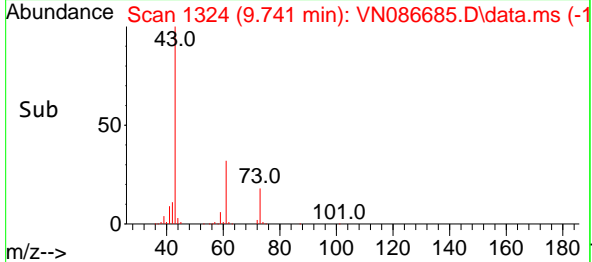
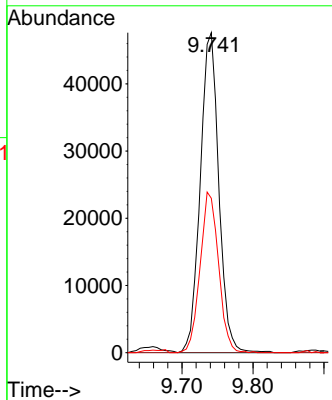
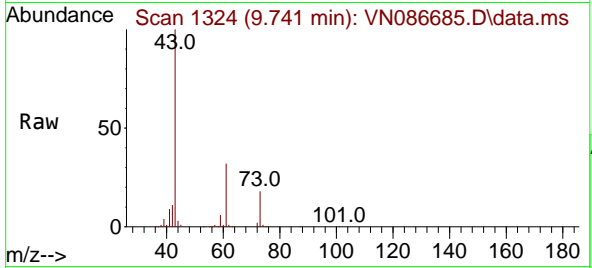




#48
 Methyl methacrylate
 Concen: 32.383 ug/l
 RT: 9.741 min Scan# 11
 Delta R.T. 0.065 min
 Lab File: VN086685.D
 Acq: 19 May 2025 13:26

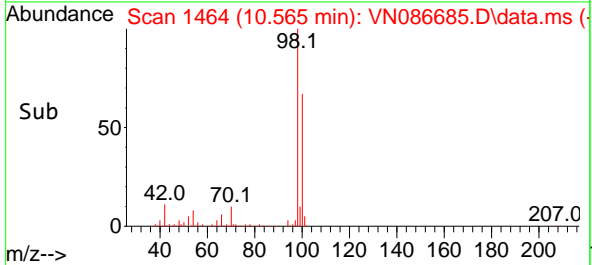
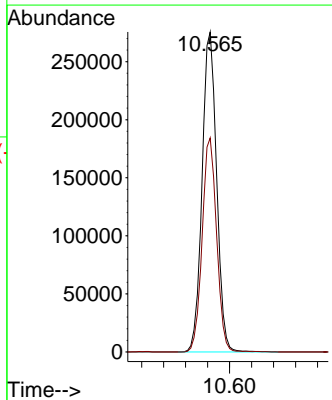
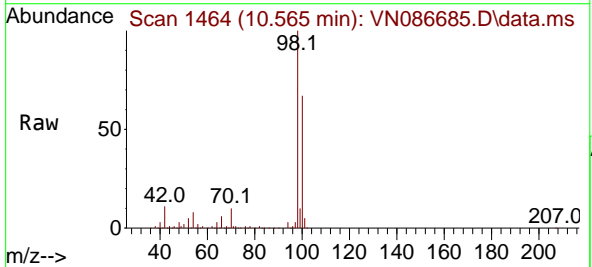
Instrument :
 MSVOA_N
 ClientSampleId :
 PB168034ZHE#02

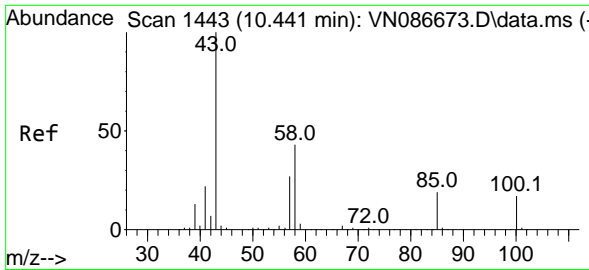
Tgt Ion: 41 Resp: 86575
 Ion Ratio Lower Upper
 41 100
 69 0.0 74.1 111.1#
 39 50.0 44.1 66.1



#50
 Toluene-d8
 Concen: 52.722 ug/l
 RT: 10.565 min Scan# 1464
 Delta R.T. 0.000 min
 Lab File: VN086685.D
 Acq: 19 May 2025 13:26

Tgt Ion: 98 Resp: 504636
 Ion Ratio Lower Upper
 98 100
 100 66.5 52.9 79.3

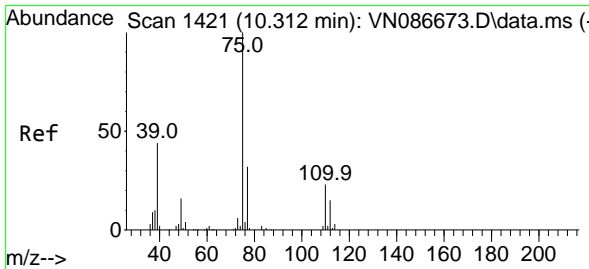
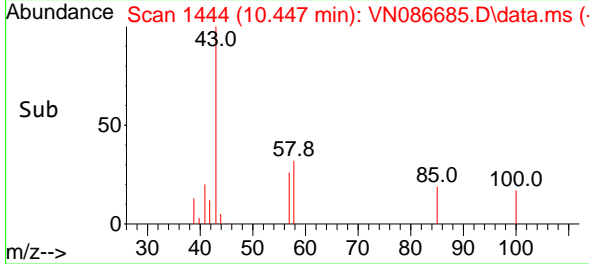
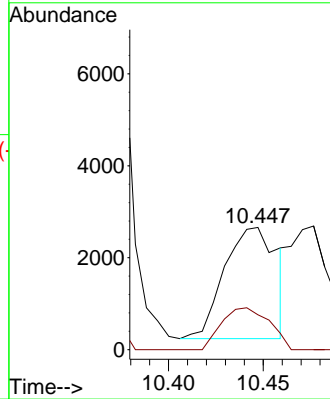
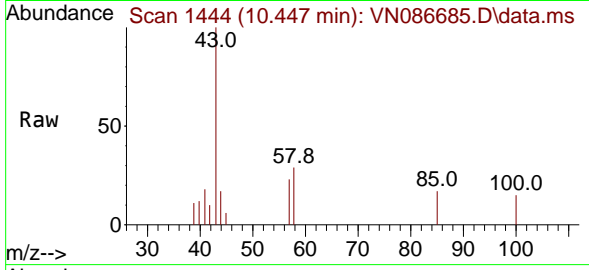




#51
 4-Methyl-2-Pentanone
 Concen: 1.346 ug/l
 RT: 10.447 min Scan# 1444
 Delta R.T. 0.006 min
 Lab File: VN086685.D
 Acq: 19 May 2025 13:26

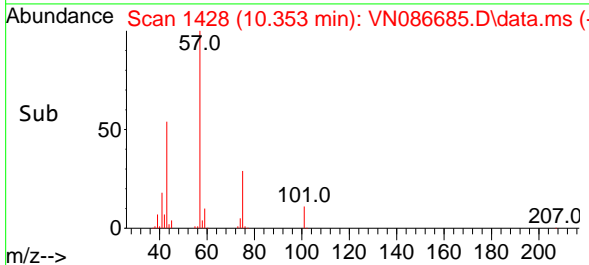
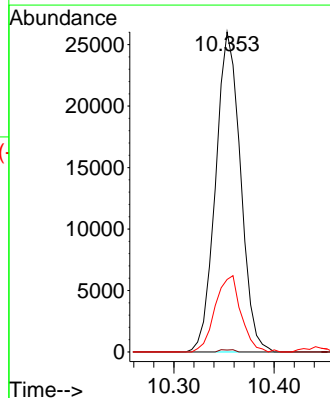
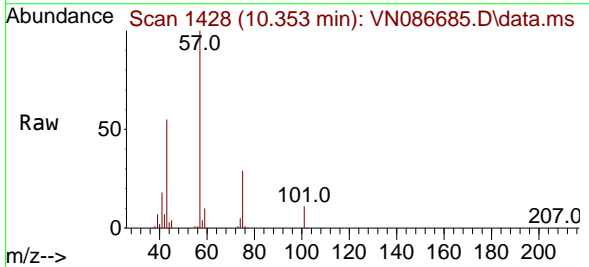
Instrument : MSVOA_N
 ClientSampleId : PB168034ZHE#02

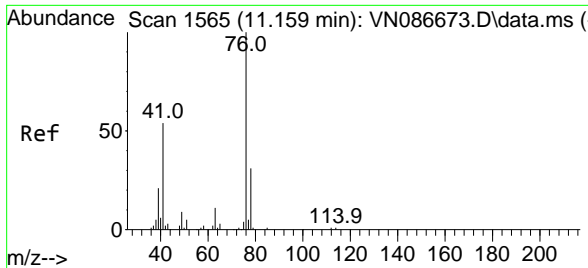
Tgt Ion: 43 Resp: 4684
 Ion Ratio Lower Upper
 43 100
 58 34.3 33.9 50.9



#54
 cis-1,3-Dichloropropene
 Concen: 10.579 ug/l
 RT: 10.353 min Scan# 1428
 Delta R.T. 0.041 min
 Lab File: VN086685.D
 Acq: 19 May 2025 13:26

Tgt Ion: 75 Resp: 44881
 Ion Ratio Lower Upper
 75 100
 77 0.6 25.3 37.9#
 39 22.7 35.2 52.8#

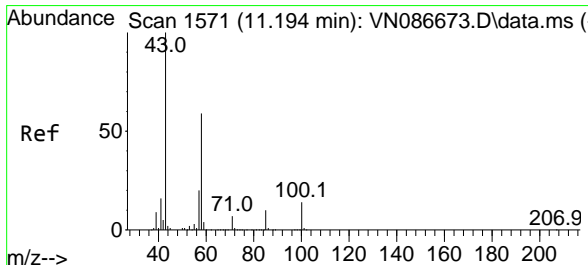
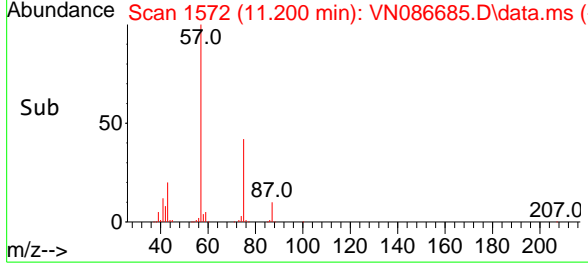
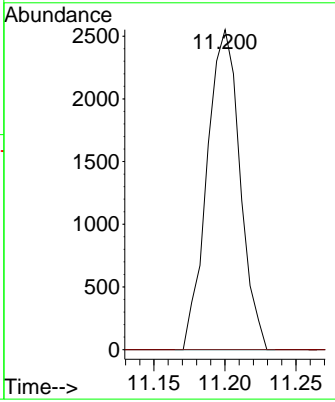
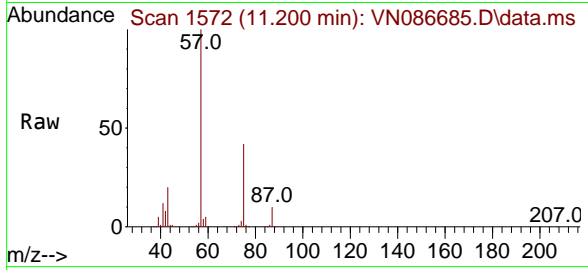




#57
 1,3-Dichloropropane
 Concen: 0.928 ug/l
 RT: 11.200 min Scan# 1572
 Delta R.T. 0.041 min
 Lab File: VN086685.D
 Acq: 19 May 2025 13:26

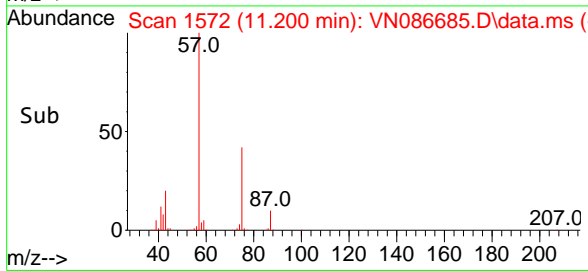
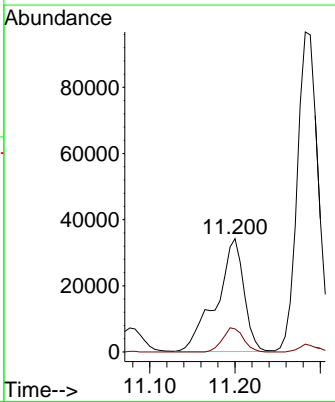
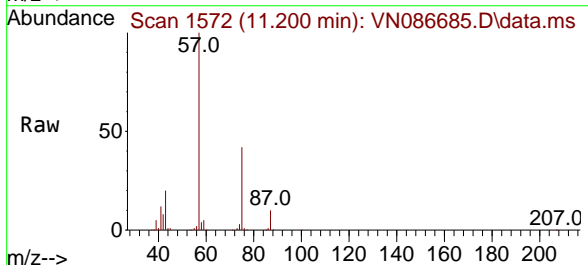
Instrument : MSVOA_N
 ClientSampleId : PB168034ZHE#02

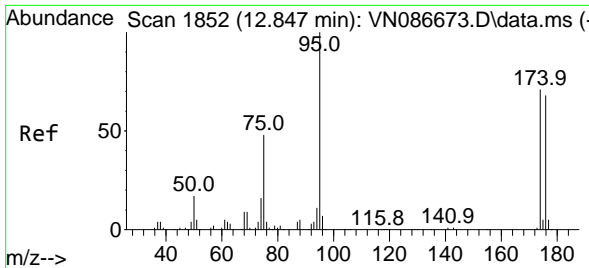
Tgt Ion: 76 Resp: 4121
 Ion Ratio Lower Upper
 76 100
 78 0.0 25.8 38.8#



#59
 2-Hexanone
 Concen: 30.131 ug/l
 RT: 11.200 min Scan# 1572
 Delta R.T. 0.006 min
 Lab File: VN086685.D
 Acq: 19 May 2025 13:26

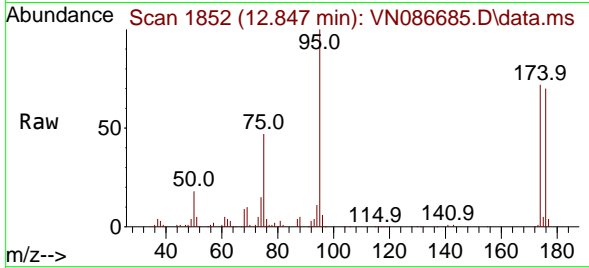
Tgt Ion: 43 Resp: 76554
 Ion Ratio Lower Upper
 43 100
 58 16.2 29.8 89.5#



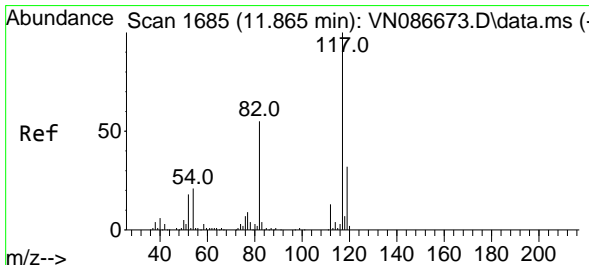
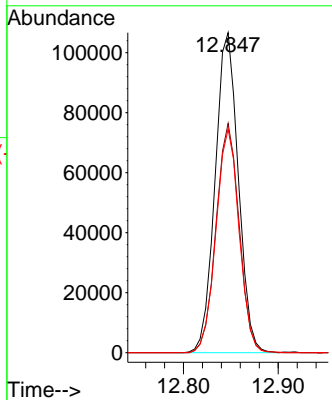
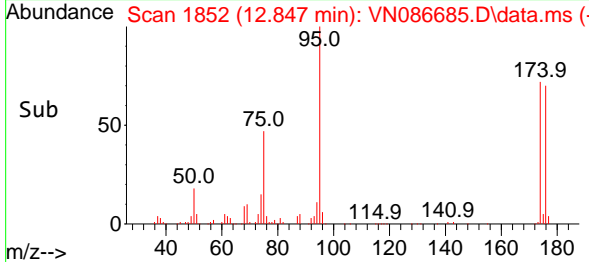


#62
 4-Bromofluorobenzene
 Concen: 53.675 ug/l
 RT: 12.847 min Scan# 1852
 Delta R.T. -0.000 min
 Lab File: VN086685.D
 Acq: 19 May 2025 13:26

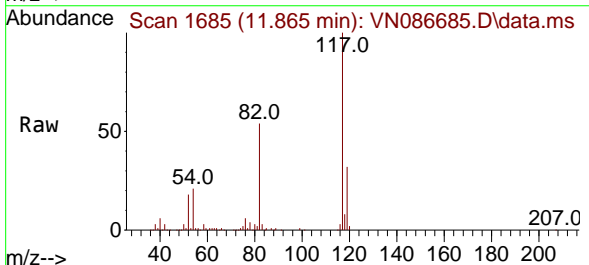
Instrument : MSVOA_N
 ClientSampleId : PB168034ZHE#02



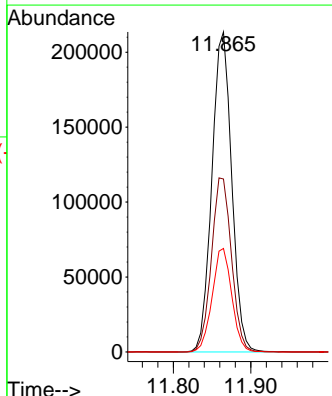
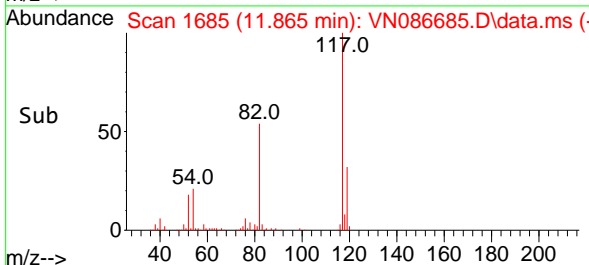
Tgt Ion: 95 Resp: 181407
 Ion Ratio Lower Upper
 95 100
 174 71.2 0.0 145.4
 176 69.5 0.0 137.8

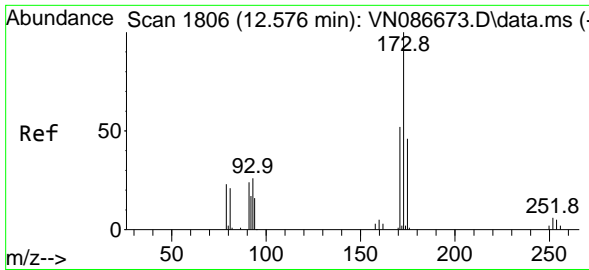


#63
 Chlorobenzene-d5
 Concen: 50.000 ug/l
 RT: 11.865 min Scan# 1685
 Delta R.T. 0.000 min
 Lab File: VN086685.D
 Acq: 19 May 2025 13:26



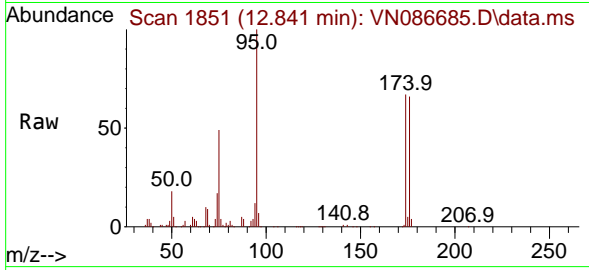
Tgt Ion: 117 Resp: 379048
 Ion Ratio Lower Upper
 117 100
 82 54.1 44.2 66.2
 119 32.4 25.4 38.2



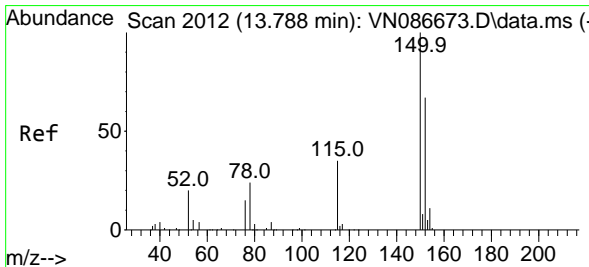
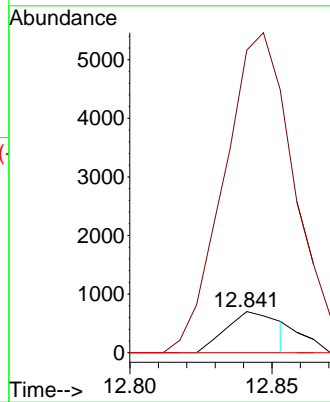
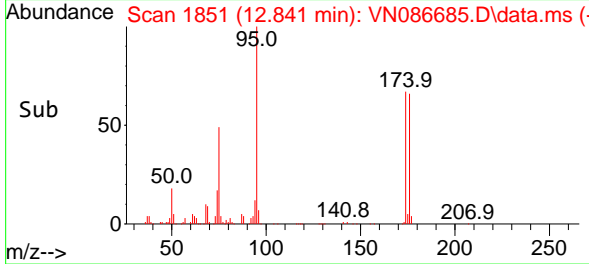


#71
 Bromoform
 Concen: 0.474 ug/l
 RT: 12.841 min Scan# 1806
 Delta R.T. 0.265 min
 Lab File: VN086685.D
 Acq: 19 May 2025 13:26

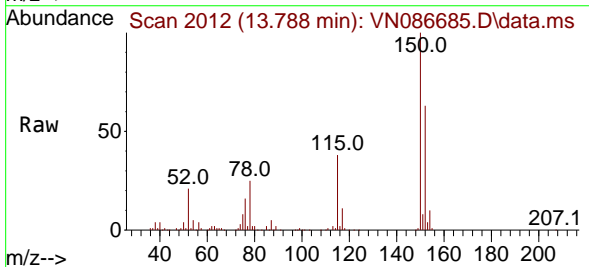
Instrument :
 MSVOA_N
 ClientSampleId :
 PB168034ZHE#02



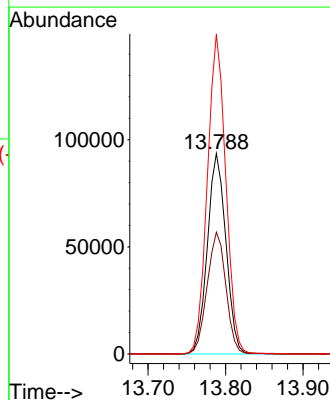
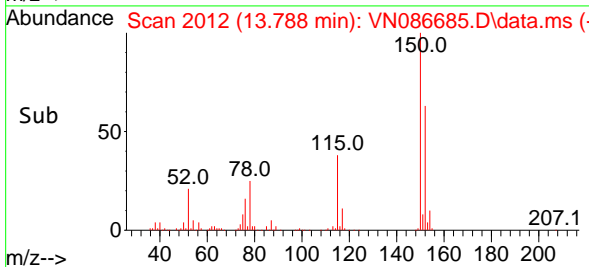
Tgt Ion:173 Resp: 904
 Ion Ratio Lower Upper
 173 100
 175 850.2 23.4 70.2#
 254 0.0 0.0 0.0

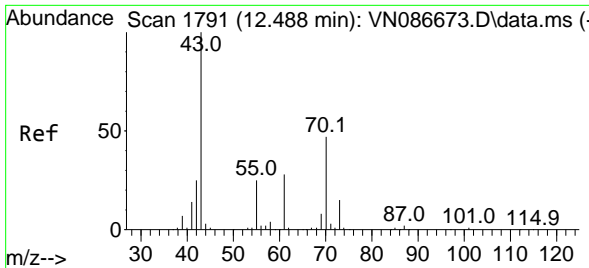


#72
 1,4-Dichlorobenzene-d4
 Concen: 50.000 ug/l
 RT: 13.788 min Scan# 2012
 Delta R.T. -0.000 min
 Lab File: VN086685.D
 Acq: 19 May 2025 13:26



Tgt Ion:152 Resp: 155368
 Ion Ratio Lower Upper
 152 100
 115 61.5 30.0 90.1
 150 158.5 0.0 347.8



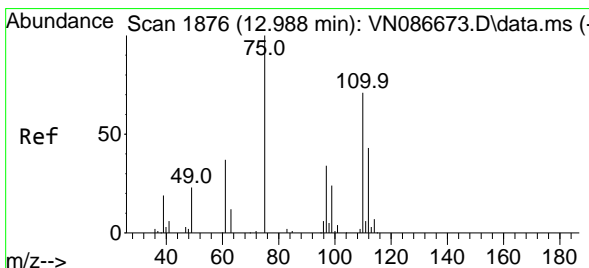
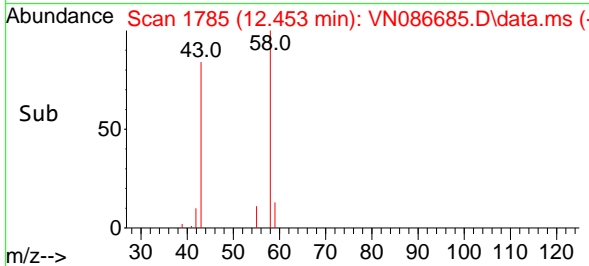
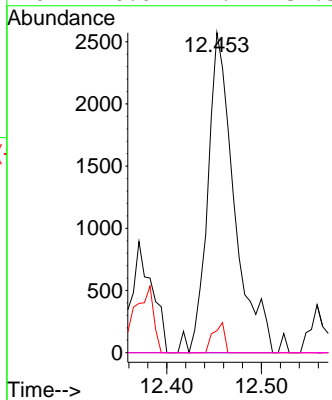
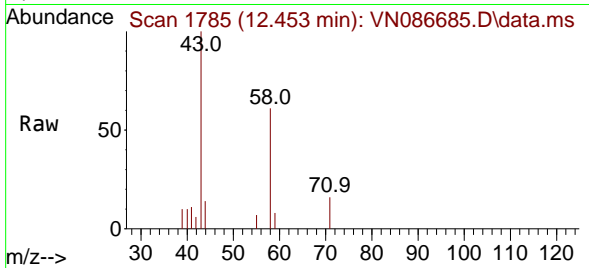


#74
 N-amy1 acetate
 Concen: 1.004 ug/l
 RT: 12.453 min Scan# 11
 Delta R.T. -0.035 min
 Lab File: VN086685.D
 Acq: 19 May 2025 13:26

Instrument : MSVOA_N
 ClientSampleId : PB168034ZHE#02

Tgt Ion: 43 Resp: 5035

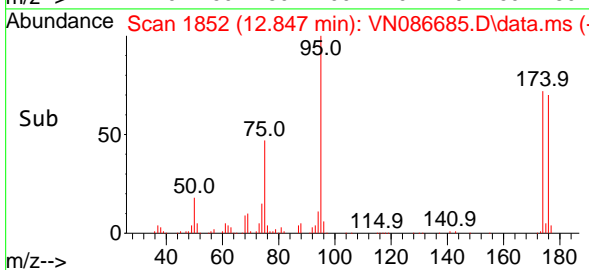
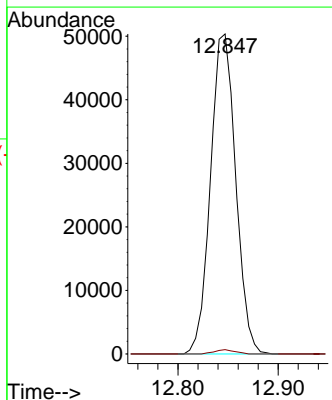
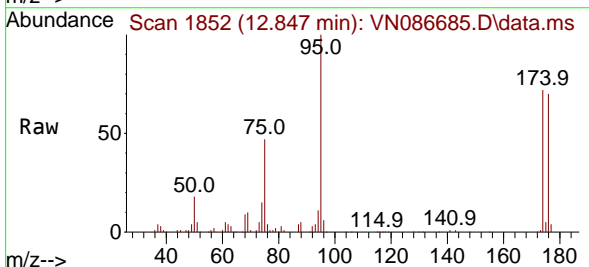
| Ion | Ratio | Lower | Upper |
|-----|-------|-------|-------|
| 43 | 100 | | |
| 70 | 0.0 | 37.9 | 56.9# |
| 55 | 4.0 | 20.5 | 30.7# |
| 61 | 0.0 | 21.7 | 32.5# |

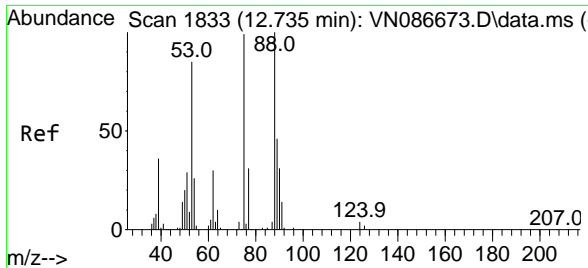


#76
 1,2,3-Trichloropropane
 Concen: 24.978 ug/l
 RT: 12.847 min Scan# 1852
 Delta R.T. -0.141 min
 Lab File: VN086685.D
 Acq: 19 May 2025 13:26

Tgt Ion: 75 Resp: 87767

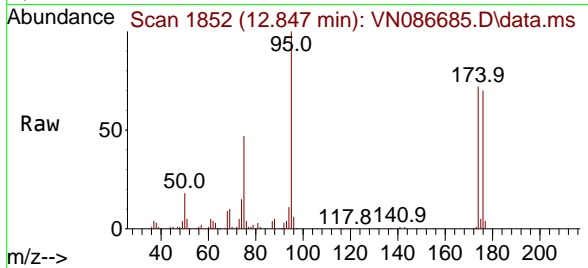
| Ion | Ratio | Lower | Upper |
|-----|-------|-------|--------|
| 75 | 100 | | |
| 77 | 1.1 | 96.0 | 288.1# |





#81
 trans-1,4-Dichloro-2-butene
 Concen: 63.036 ug/l
 RT: 12.847 min Scan# 11
 Delta R.T. 0.112 min
 Lab File: VN086685.D
 Acq: 19 May 2025 13:26

Instrument :
 MSVOA_N
 ClientSampleId :
 PB168034ZHE#02



Tgt Ion: 75 Resp: 87767
 Ion Ratio Lower Upper
 75 100
 53 0.0 70.4 105.6#
 89 0.0 32.4 48.6#

