

Data Path : Z:\voasrv\HPCHEM1\MSVOA\_N\Data\VN051925\  
 Data File : VN086686.D  
 Acq On : 19 May 2025 13:51  
 Operator : JC\MD  
 Sample : PB168034ZHE#03  
 Misc : 5.0mL/MSVOA\_N/WATER  
 ALS Vial : 10 Sample Multiplier: 1

Instrument :  
 MSVOA\_N  
 ClientSampleId :  
 PB168034ZHE#03

Quant Time: May 20 03:18:28 2025  
 Quant Method : Z:\voasrv\HPCHEM1\MSVOA\_N\methods\82N051625W.M  
 Quant Title : SW846 8260  
 QLast Update : Sat May 17 00:46:13 2025  
 Response via : Initial Calibration

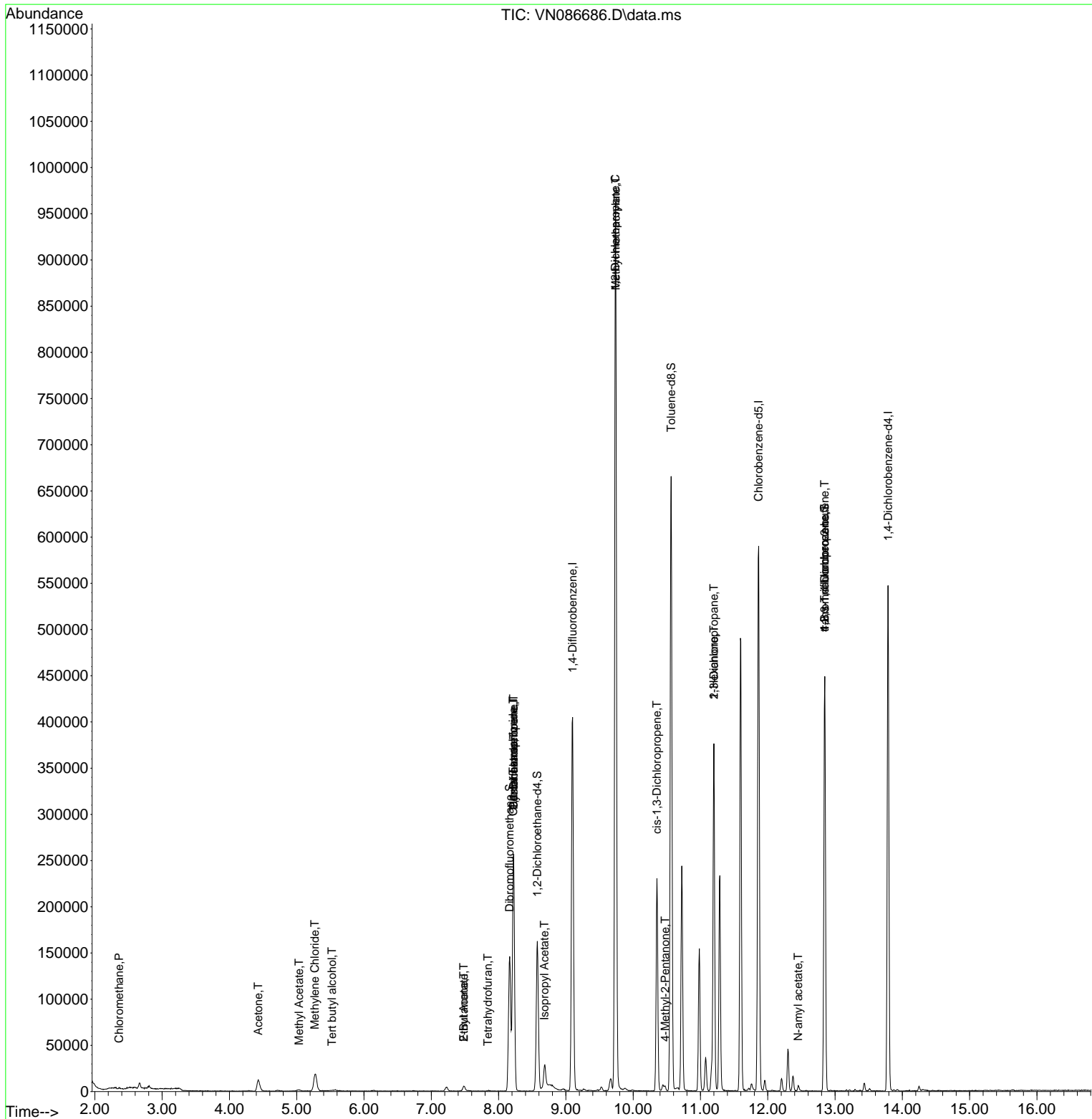
Compound	R.T.	QIon	Response	Conc	Units	Dev(Min)
-----						
Internal Standards						
1) Pentafluorobenzene	8.224	168	195052	50.000	ug/l	0.00
34) 1,4-Difluorobenzene	9.100	114	367470	50.000	ug/l	0.00
63) Chlorobenzene-d5	11.865	117	361093	50.000	ug/l	0.00
72) 1,4-Dichlorobenzene-d4	13.788	152	151576	50.000	ug/l	0.00
System Monitoring Compounds						
33) 1,2-Dichloroethane-d4	8.577	65	133578	49.560	ug/l	0.00
Spiked Amount	50.000	Range 74 - 125	Recovery	=	99.120%	
35) Dibromofluoromethane	8.165	113	109684	50.120	ug/l	0.00
Spiked Amount	50.000	Range 75 - 124	Recovery	=	100.240%	
50) Toluene-d8	10.565	98	479827	52.909	ug/l	0.00
Spiked Amount	50.000	Range 86 - 113	Recovery	=	105.820%	
62) 4-Bromofluorobenzene	12.847	95	170145	53.134	ug/l	0.00
Spiked Amount	50.000	Range 77 - 121	Recovery	=	106.260%	
Target Compounds						
						Qvalue
3) Chloromethane	2.359	50	1051	0.330	ug/l #	86
11) Tert butyl alcohol	5.524	59	562	1.145	ug/l #	73
16) Acetone	4.430	43	23817	23.623	ug/l	100
18) Methyl Acetate	5.036	43	3462	1.227	ug/l #	75
20) Methylene Chloride	5.271	84	16035	6.027	ug/l	95
25) 2-Butanone	7.483	43	9846	6.320	ug/l	99
29) Tetrahydrofuran	7.841	42	785	0.772	ug/l #	35
31) Cyclohexane	8.224	56	3804	0.940	ug/l #	1
36) 1,1-Dichloropropene	8.224	75	14984	4.642	ug/l #	49
37) Ethyl Acetate	7.483	43	9846	3.020	ug/l #	67
38) Carbon Tetrachloride	8.218	117	19445	6.114	ug/l #	16
43) Isopropyl Acetate	8.682	43	37698	5.767	ug/l #	83
45) 1,2-Dichloropropane	9.735	63	1179	0.471	ug/l #	42
48) Methyl methacrylate	9.741	41	84015	33.168	ug/l #	37
51) 4-Methyl-2-Pentanone	10.477	43	4066	1.233	ug/l #	33
54) cis-1,3-Dichloropropene	10.353	75	44509	11.073	ug/l #	59
57) 1,3-Dichloropropane	11.200	76	3957	0.941	ug/l #	42
59) 2-Hexanone	11.200	43	75384	31.315	ug/l #	43
74) N-amyl acetate	12.453	43	4730	0.967	ug/l #	41
76) 1,2,3-Trichloropropane	12.847	75	83424	24.336	ug/l #	1
81) trans-1,4-Dichloro-2-b...	12.847	75	83424	61.415	ug/l #	15
-----						

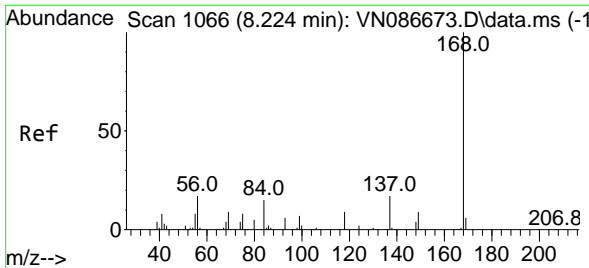
(#) = qualifier out of range (m) = manual integration (+) = signals summed

Data Path : Z:\voasrv\HPCHEM1\MSVOA\_N\Data\VN051925\  
 Data File : VN086686.D  
 Acq On : 19 May 2025 13:51  
 Operator : JC\MD  
 Sample : PB168034ZHE#03  
 Misc : 5.0mL/MSVOA\_N/WATER  
 ALS Vial : 10 Sample Multiplier: 1

Instrument :  
 MSVOA\_N  
 ClientSampleId :  
 PB168034ZHE#03

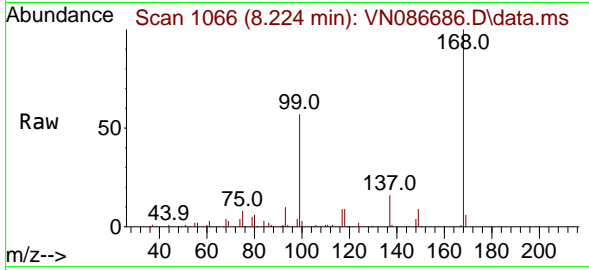
Quant Time: May 20 03:18:28 2025  
 Quant Method : Z:\voasrv\HPCHEM1\MSVOA\_N\methods\82N051625W.M  
 Quant Title : SW846 8260  
 QLast Update : Sat May 17 00:46:13 2025  
 Response via : Initial Calibration



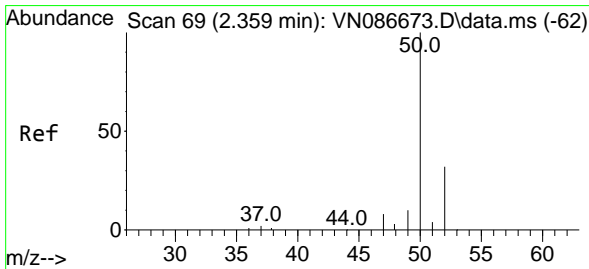
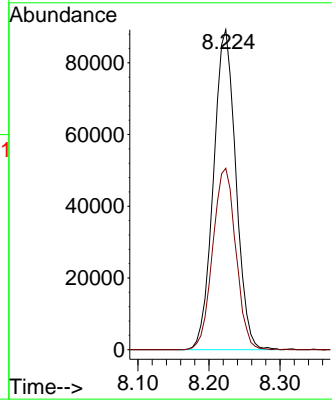
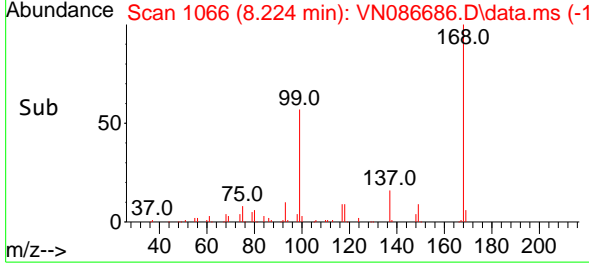


#1  
 Pentafluorobenzene  
 Concen: 50.000 ug/l  
 RT: 8.224 min Scan# 1066  
 Delta R.T. -0.000 min  
 Lab File: VN086686.D  
 Acq: 19 May 2025 13:51

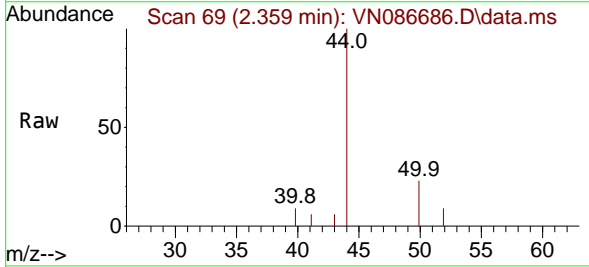
Instrument : MSVOA\_N  
 ClientSampleId : PB168034ZHE#03



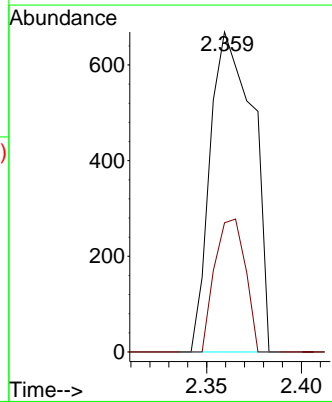
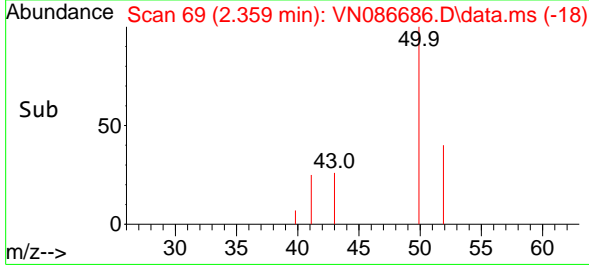
Tgt Ion:168 Resp: 195052  
 Ion Ratio Lower Upper  
 168 100  
 99 56.7 47.0 70.4

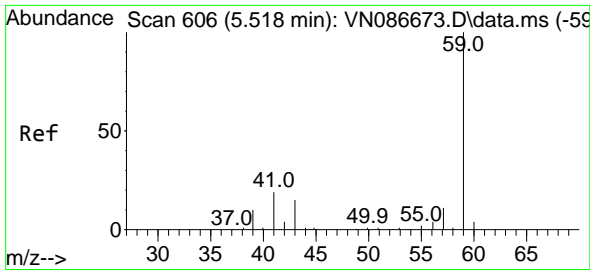


#3  
 Chloromethane  
 Concen: 0.330 ug/l  
 RT: 2.359 min Scan# 69  
 Delta R.T. -0.000 min  
 Lab File: VN086686.D  
 Acq: 19 May 2025 13:51



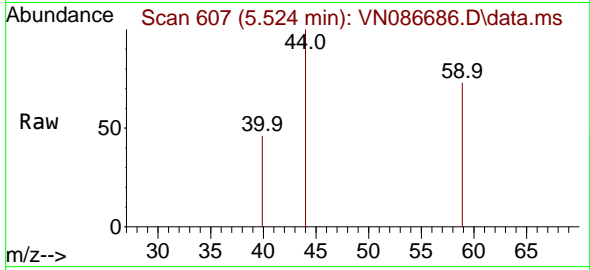
Tgt Ion: 50 Resp: 1051  
 Ion Ratio Lower Upper  
 50 100  
 52 40.4 25.9 38.9#



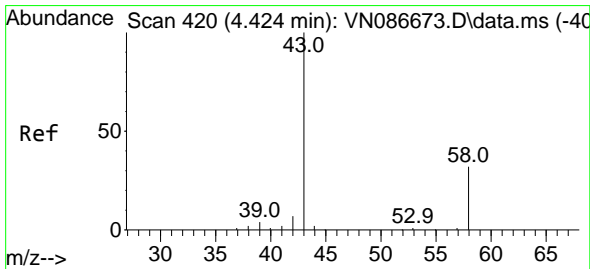
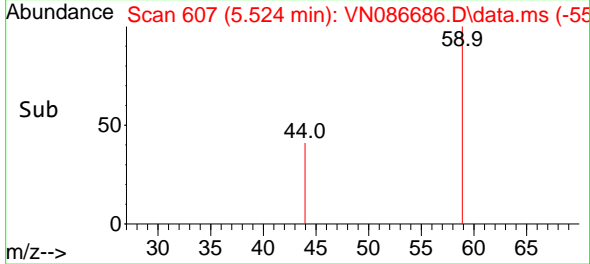
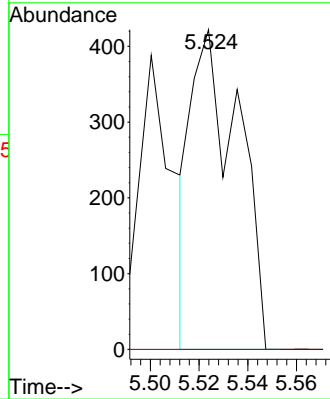


#11  
 Tert butyl alcohol  
 Concen: 1.145 ug/l  
 RT: 5.524 min Scan# 607  
 Delta R.T. 0.006 min  
 Lab File: VN086686.D  
 Acq: 19 May 2025 13:51

Instrument : MSVOA\_N  
 ClientSampleId : PB168034ZHE#03

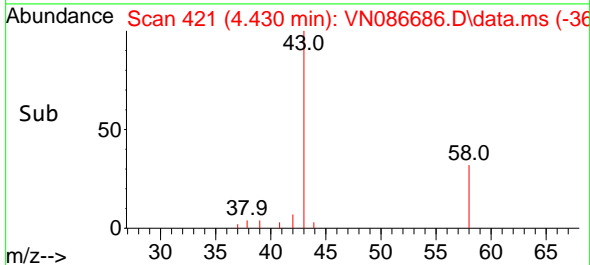
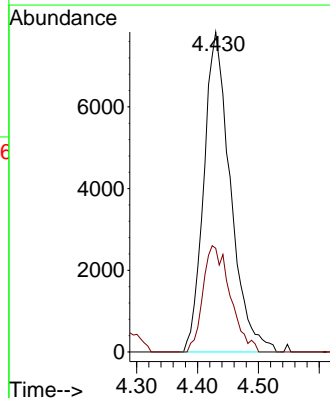
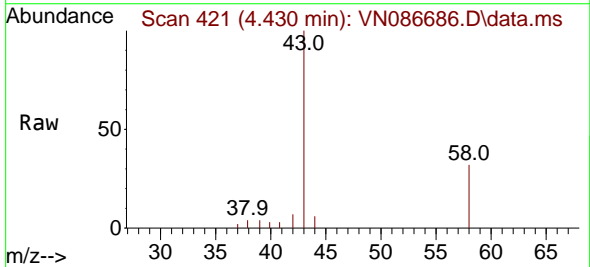


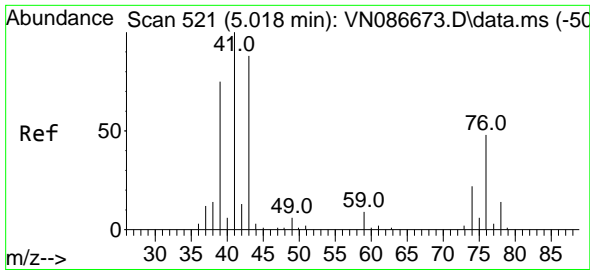
Tgt Ion: 59 Resp: 562  
 Ion Ratio Lower Upper  
 59 100  
 57 0.0 8.2 12.2#



#16  
 Acetone  
 Concen: 23.623 ug/l  
 RT: 4.430 min Scan# 421  
 Delta R.T. 0.006 min  
 Lab File: VN086686.D  
 Acq: 19 May 2025 13:51

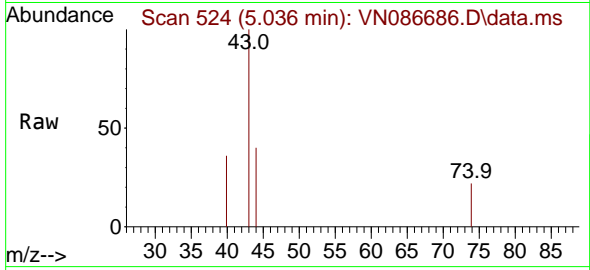
Tgt Ion: 43 Resp: 23817  
 Ion Ratio Lower Upper  
 43 100  
 58 32.4 25.8 38.6



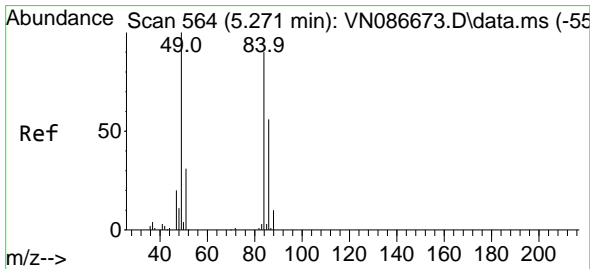
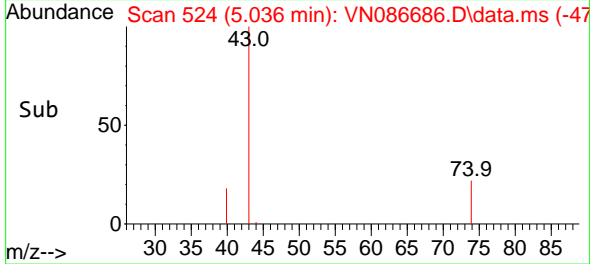
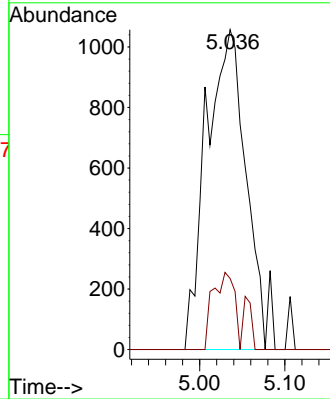


#18  
 Methyl Acetate  
 Concen: 1.227 ug/l  
 RT: 5.036 min Scan# 51  
 Delta R.T. 0.018 min  
 Lab File: VN086686.D  
 Acq: 19 May 2025 13:51

Instrument : MSVOA\_N  
 ClientSampleId : PB168034ZHE#03

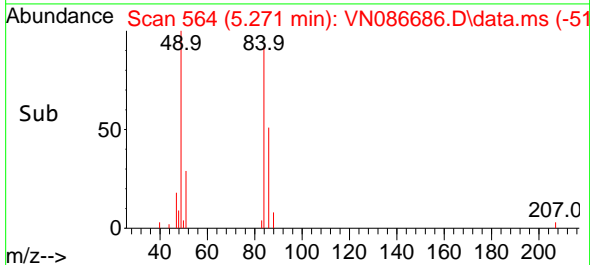
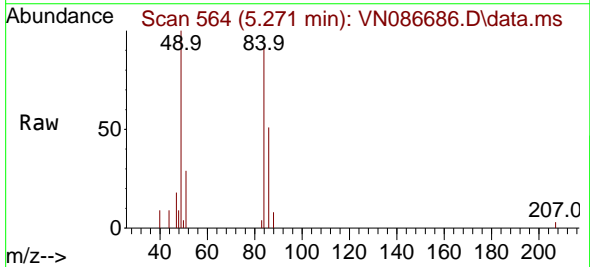
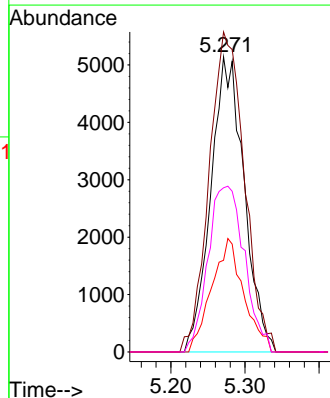


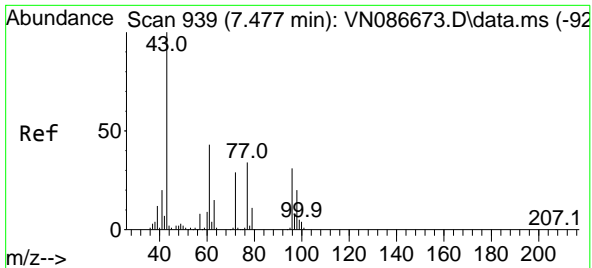
Tgt Ion: 43 Resp: 3462  
 Ion Ratio Lower Upper  
 43 100  
 74 12.9 20.5 30.7#



#20  
 Methylene Chloride  
 Concen: 6.027 ug/l  
 RT: 5.271 min Scan# 564  
 Delta R.T. -0.000 min  
 Lab File: VN086686.D  
 Acq: 19 May 2025 13:51

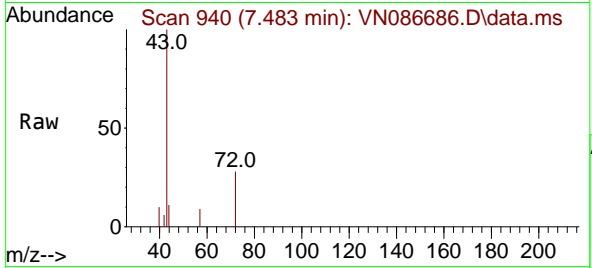
Tgt Ion: 84 Resp: 16035  
 Ion Ratio Lower Upper  
 84 100  
 49 108.4 88.8 133.2  
 51 31.1 27.8 41.6  
 86 55.6 49.8 74.6



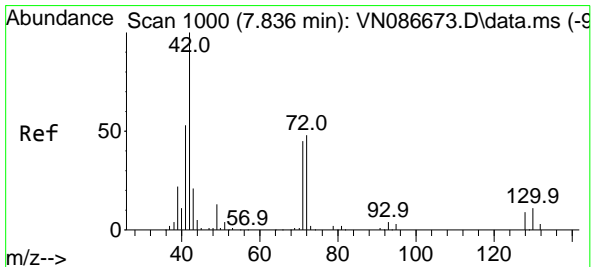
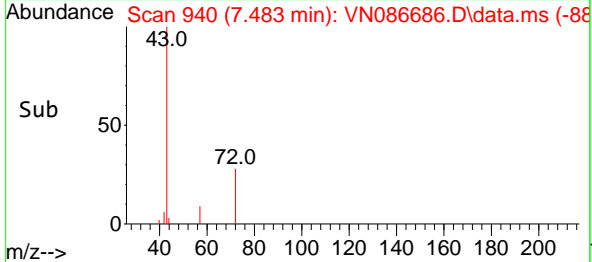
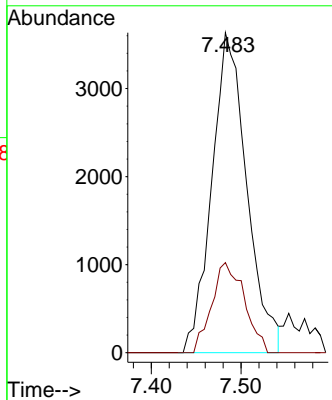


#25  
 2-Butanone  
 Concen: 6.320 ug/l  
 RT: 7.483 min Scan# 940  
 Delta R.T. 0.006 min  
 Lab File: VN086686.D  
 Acq: 19 May 2025 13:51

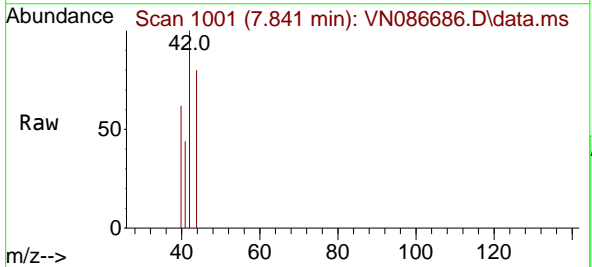
Instrument : MSVOA\_N  
 ClientSampleId : PB168034ZHE#03



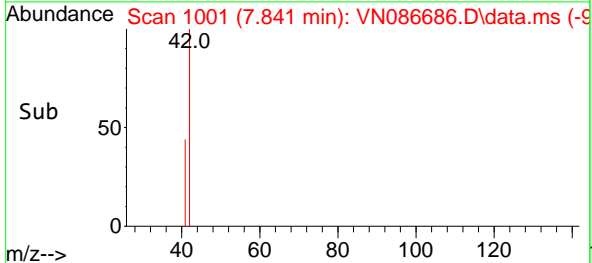
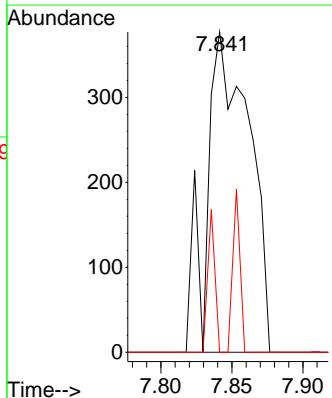
Tgt Ion: 43 Resp: 9846  
 Ion Ratio Lower Upper  
 43 100  
 72 28.1 23.1 34.7

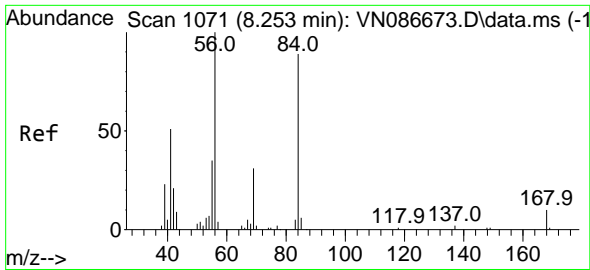


#29  
 Tetrahydrofuran  
 Concen: 0.772 ug/l  
 RT: 7.841 min Scan# 1001  
 Delta R.T. 0.006 min  
 Lab File: VN086686.D  
 Acq: 19 May 2025 13:51



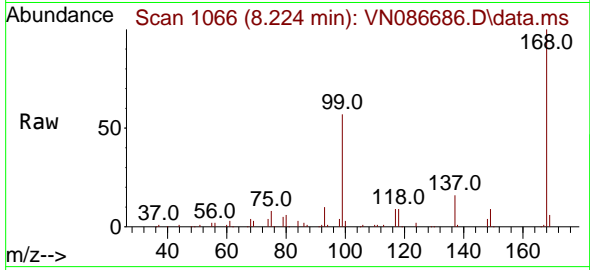
Tgt Ion: 42 Resp: 785  
 Ion Ratio Lower Upper  
 42 100  
 72 0.0 38.7 58.1#  
 71 7.5 36.2 54.4#



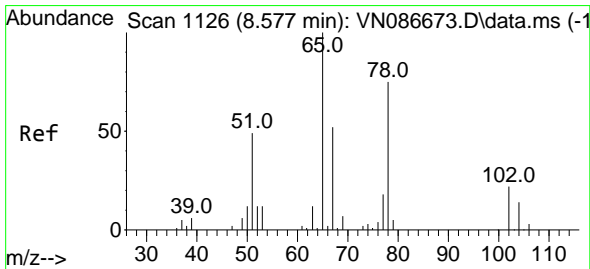
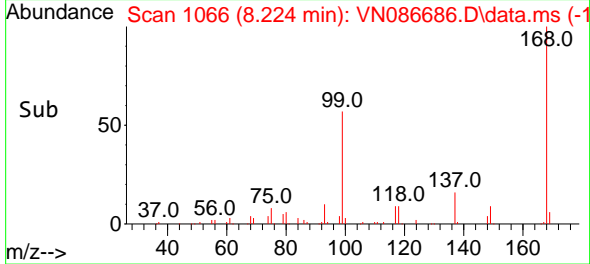
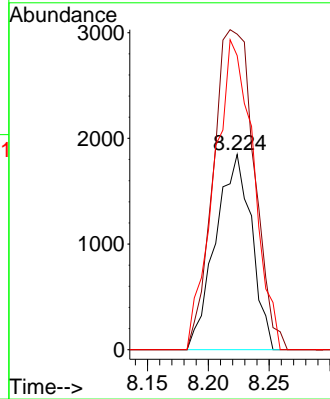


#31  
 Cyclohexane  
 Concen: 0.940 ug/l  
 RT: 8.224 min Scan# 1066  
 Delta R.T. -0.030 min  
 Lab File: VN086686.D  
 Acq: 19 May 2025 13:51

Instrument : MSVOA\_N  
 ClientSampleId : PB168034ZHE#03

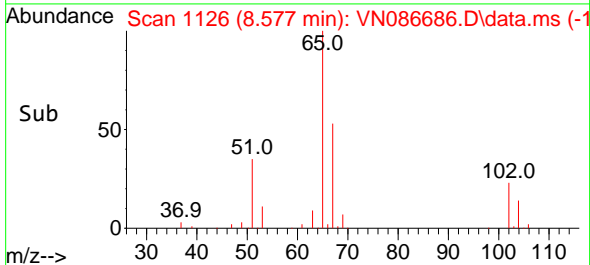
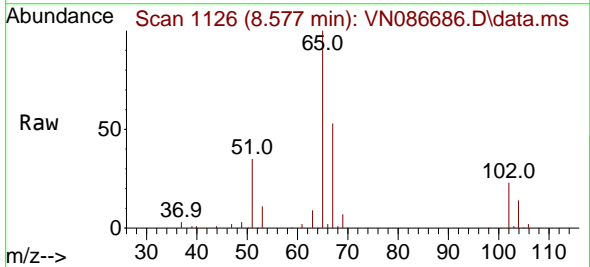
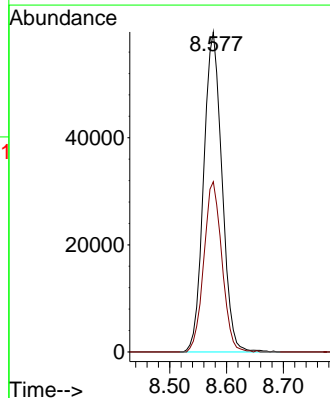


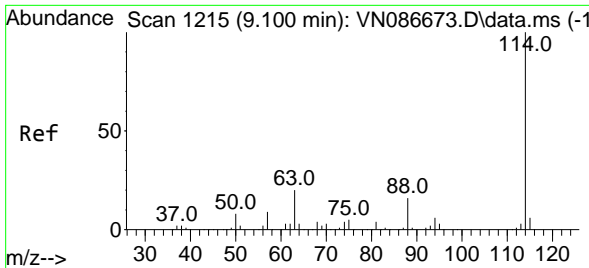
Tgt Ion: 56 Resp: 3804  
 Ion Ratio Lower Upper  
 56 100  
 69 161.6 25.0 37.6#  
 84 150.6 71.0 106.4#



#33  
 1,2-Dichloroethane-d4  
 Concen: 49.560 ug/l  
 RT: 8.577 min Scan# 1126  
 Delta R.T. -0.000 min  
 Lab File: VN086686.D  
 Acq: 19 May 2025 13:51

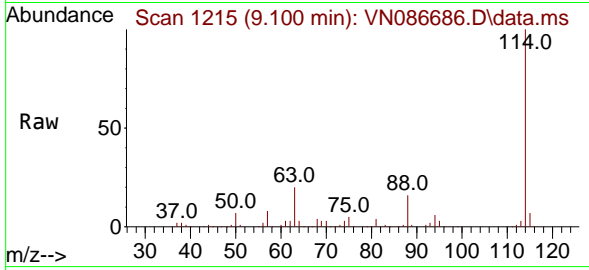
Tgt Ion: 65 Resp: 133578  
 Ion Ratio Lower Upper  
 65 100  
 67 52.5 0.0 106.4



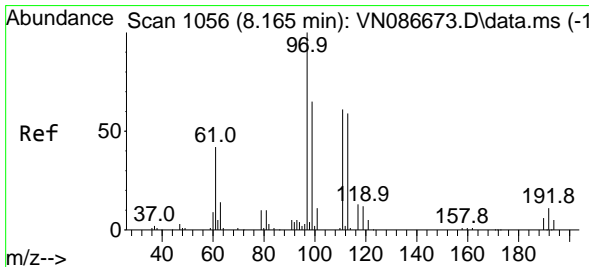
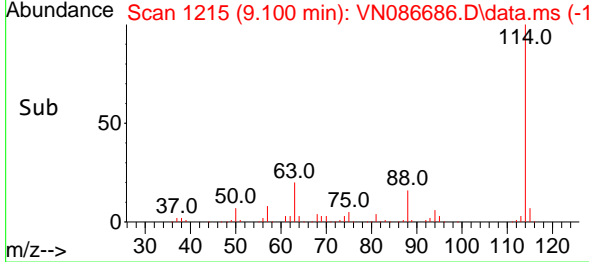
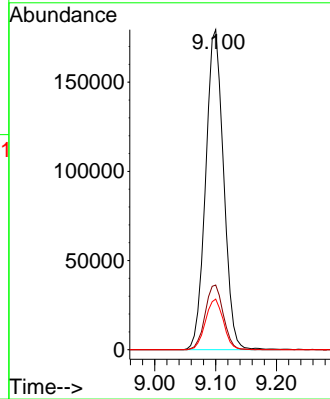


#34  
 1,4-Difluorobenzene  
 Concen: 50.000 ug/l  
 RT: 9.100 min Scan# 11  
 Delta R.T. -0.000 min  
 Lab File: VN086686.D  
 Acq: 19 May 2025 13:51

Instrument : MSVOA\_N  
 ClientSampleId : PB168034ZHE#03

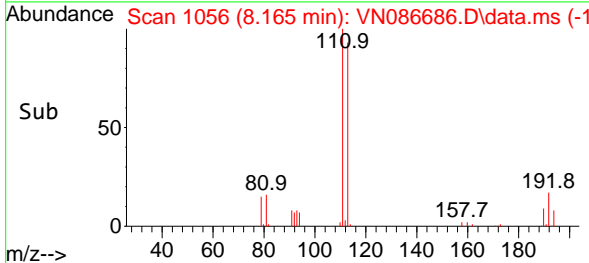
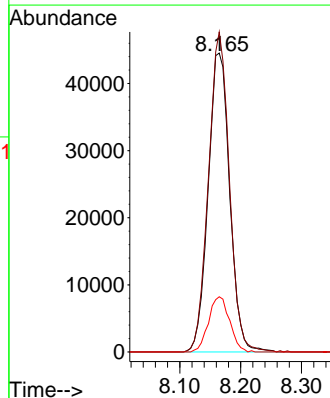
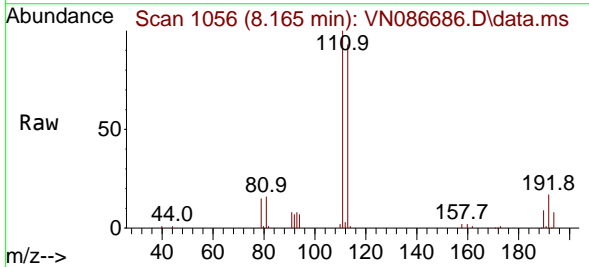


Tgt Ion:114 Resp: 367470  
 Ion Ratio Lower Upper  
 114 100  
 63 20.2 0.0 40.2  
 88 15.8 0.0 31.2

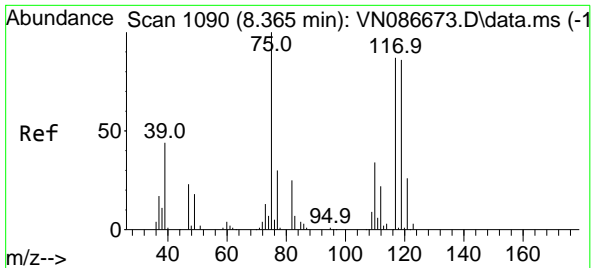


#35  
 Dibromofluoromethane  
 Concen: 50.120 ug/l  
 RT: 8.165 min Scan# 1056  
 Delta R.T. -0.000 min  
 Lab File: VN086686.D  
 Acq: 19 May 2025 13:51

Tgt Ion:113 Resp: 109684  
 Ion Ratio Lower Upper  
 113 100  
 111 103.6 82.2 123.2  
 192 18.0 13.8 20.8



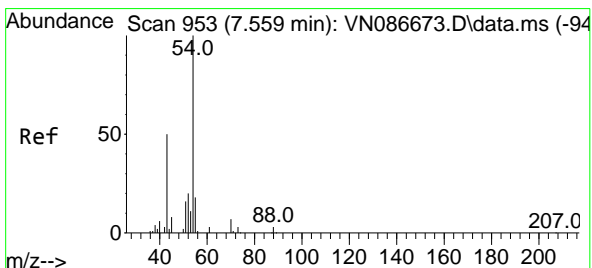
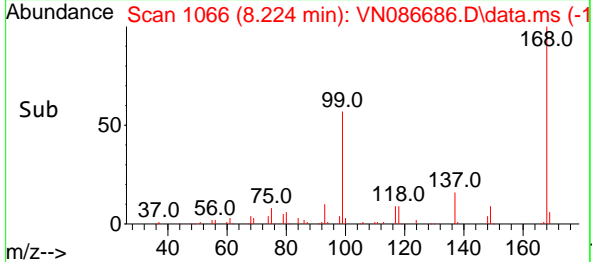
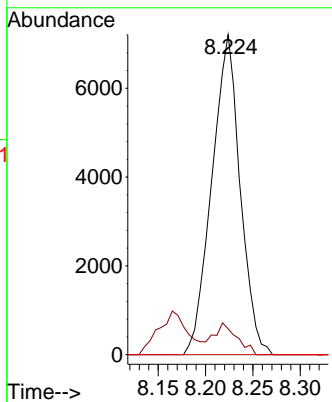
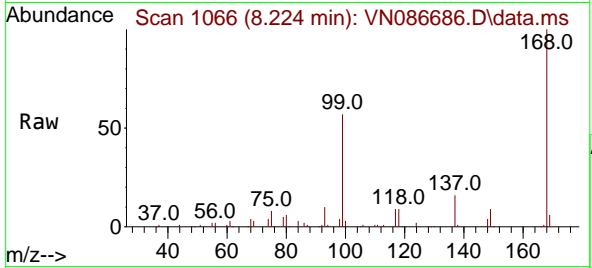




#36  
 1,1-Dichloropropene  
 Concen: 4.642 ug/l  
 RT: 8.224 min Scan# 1066  
 Delta R.T. -0.141 min  
 Lab File: VN086686.D  
 Acq: 19 May 2025 13:51

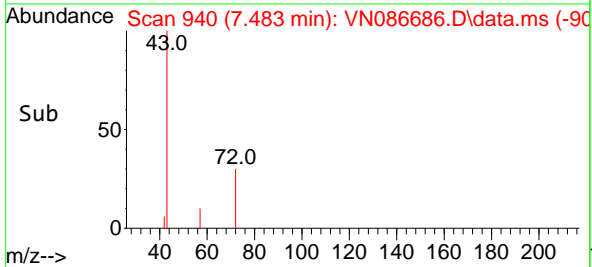
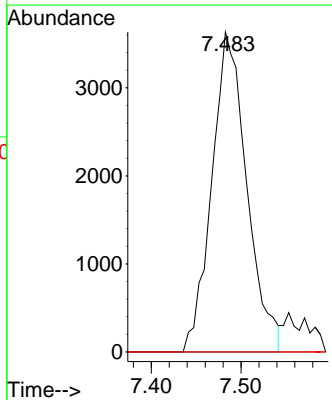
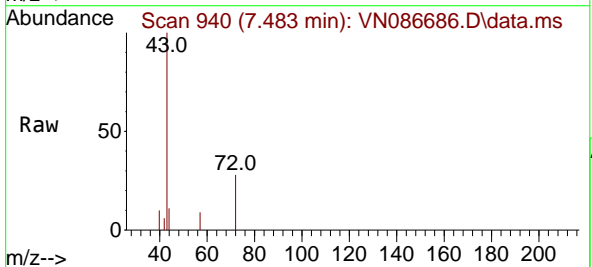
Instrument : MSVOA\_N  
 ClientSampleId : PB168034ZHE#03

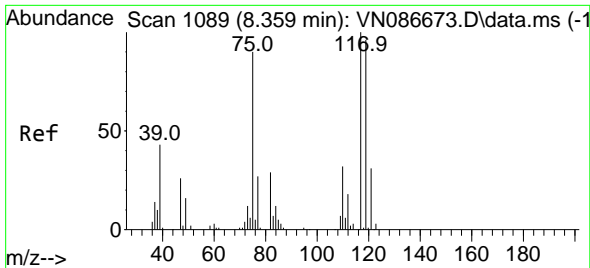
Tgt Ion	Resp	Lower	Upper
75	14984		
75	100		
110	7.9	17.5	52.5#
77	0.0	25.1	37.7#



#37  
 Ethyl Acetate  
 Concen: 3.020 ug/l  
 RT: 7.483 min Scan# 940  
 Delta R.T. -0.077 min  
 Lab File: VN086686.D  
 Acq: 19 May 2025 13:51

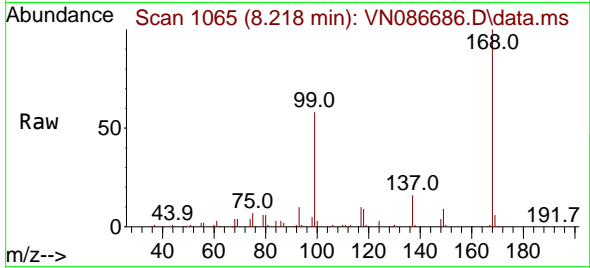
Tgt Ion	Resp	Lower	Upper
43	9846		
43	100		
61	0.0	11.6	17.4#
70	0.0	9.4	14.0#



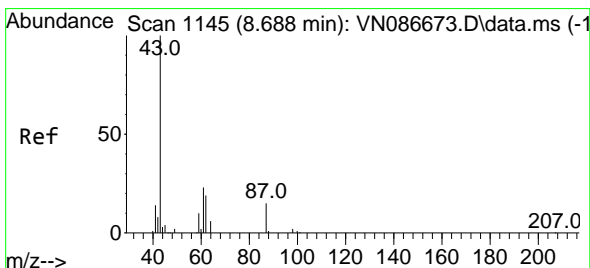
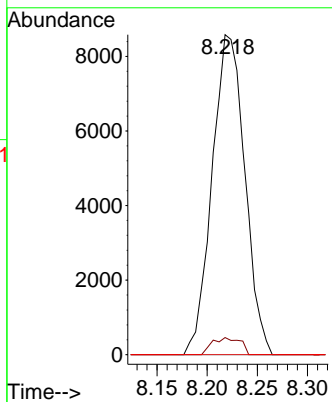
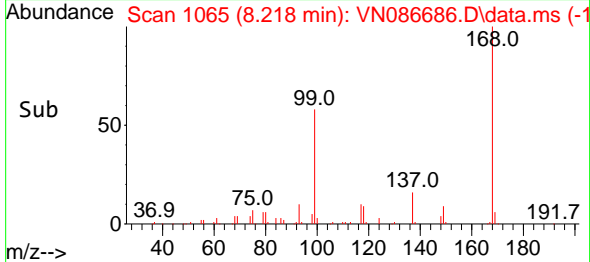


#38  
 Carbon Tetrachloride  
 Concen: 6.114 ug/l  
 RT: 8.218 min Scan# 1065  
 Delta R.T. -0.141 min  
 Lab File: VN086686.D  
 Acq: 19 May 2025 13:51

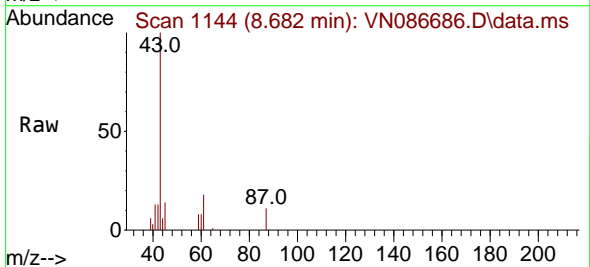
Instrument : MSVOA\_N  
 ClientSampleId : PB168034ZHE#03



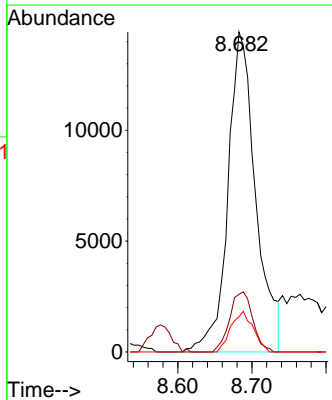
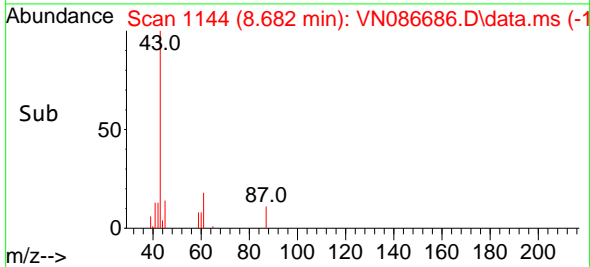
Tgt Ion: 117 Resp: 19445  
 Ion Ratio Lower Upper  
 117 100  
 119 5.4 77.0 115.6#  
 121 0.0 25.0 37.6#

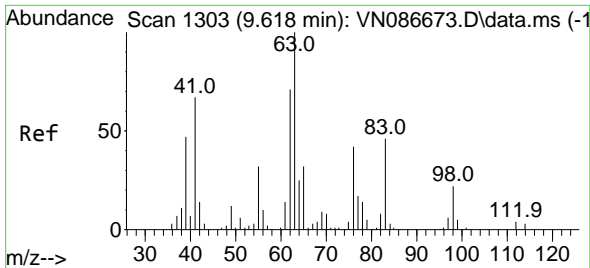


#43  
 Isopropyl Acetate  
 Concen: 5.767 ug/l  
 RT: 8.682 min Scan# 1144  
 Delta R.T. -0.006 min  
 Lab File: VN086686.D  
 Acq: 19 May 2025 13:51



Tgt Ion: 43 Resp: 37698  
 Ion Ratio Lower Upper  
 43 100  
 61 15.6 21.4 32.2#  
 87 10.1 11.1 16.7#

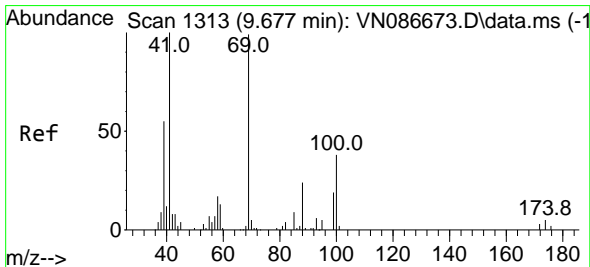
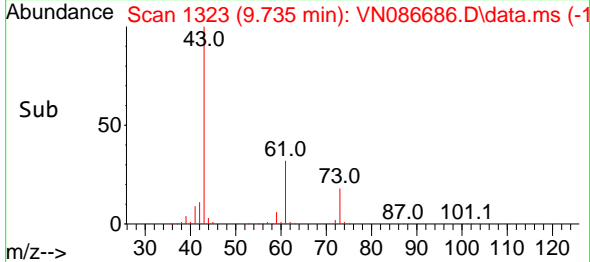
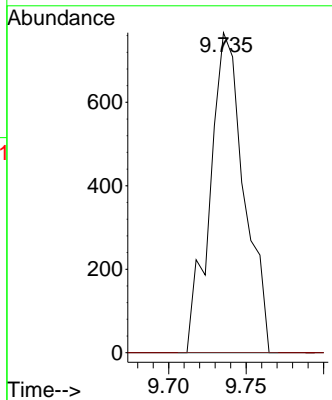
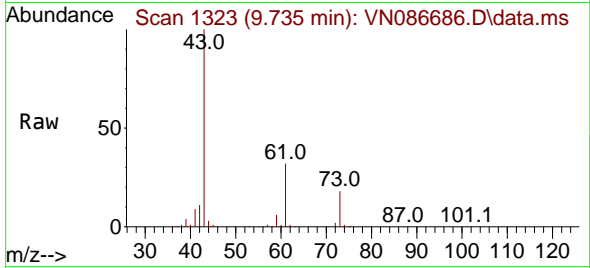




#45  
 1,2-Dichloropropane  
 Concen: 0.471 ug/l  
 RT: 9.735 min Scan# 1179  
 Delta R.T. 0.118 min  
 Lab File: VN086686.D  
 Acq: 19 May 2025 13:51

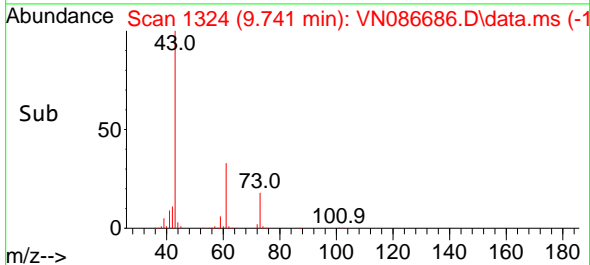
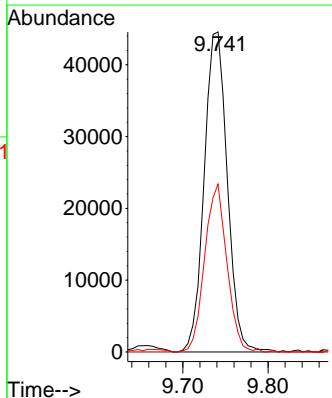
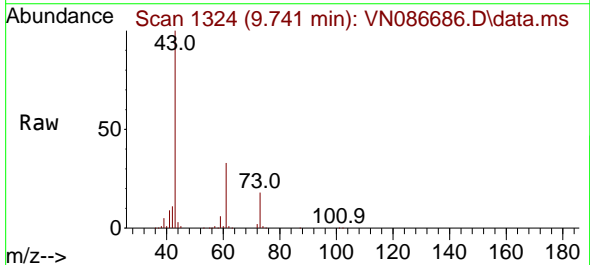
Instrument : MSVOA\_N  
 ClientSampleId : PB168034ZHE#03

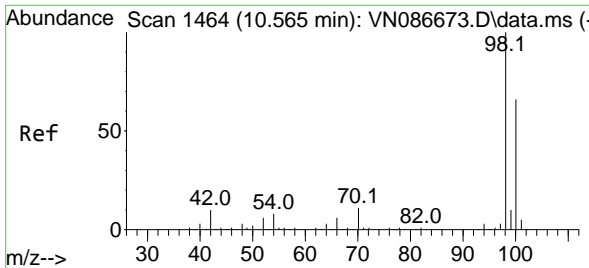
Tgt Ion: 63 Resp: 1179  
 Ion Ratio Lower Upper  
 63 100  
 65 0.0 25.8 38.6#



#48  
 Methyl methacrylate  
 Concen: 33.168 ug/l  
 RT: 9.741 min Scan# 1324  
 Delta R.T. 0.065 min  
 Lab File: VN086686.D  
 Acq: 19 May 2025 13:51

Tgt Ion: 41 Resp: 84015  
 Ion Ratio Lower Upper  
 41 100  
 69 0.0 74.1 111.1#  
 39 50.4 44.1 66.1

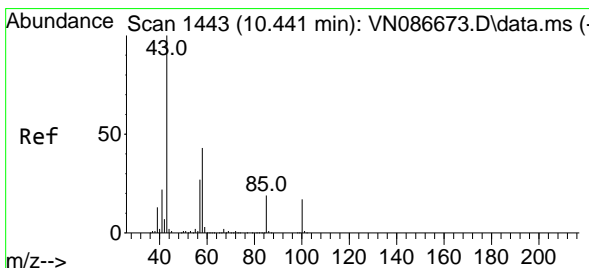
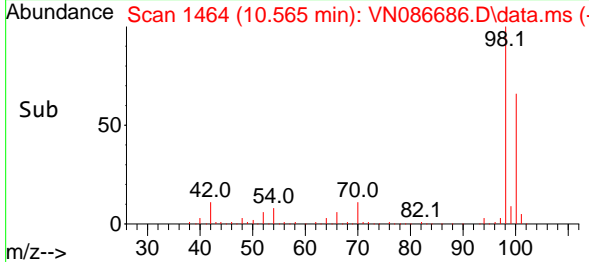
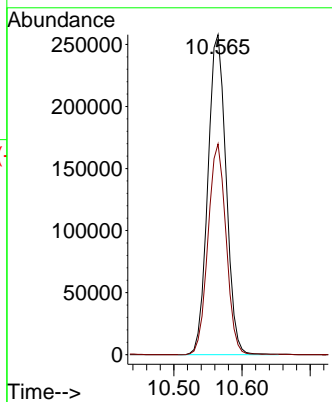
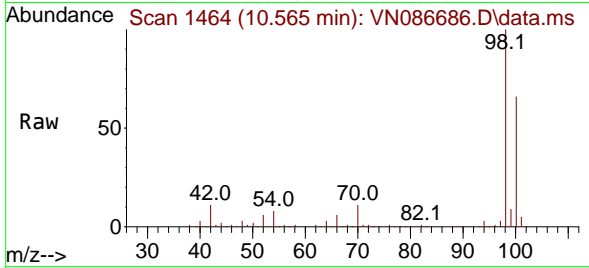




#50  
 Toluene-d8  
 Concen: 52.909 ug/l  
 RT: 10.565 min Scan# 1464  
 Delta R.T. -0.000 min  
 Lab File: VN086686.D  
 Acq: 19 May 2025 13:51

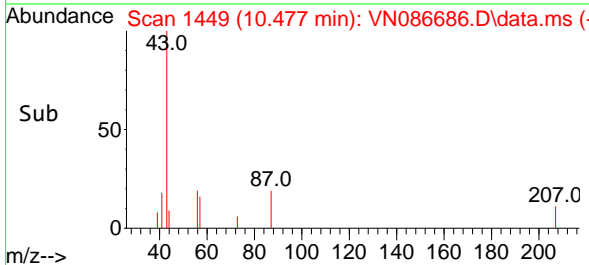
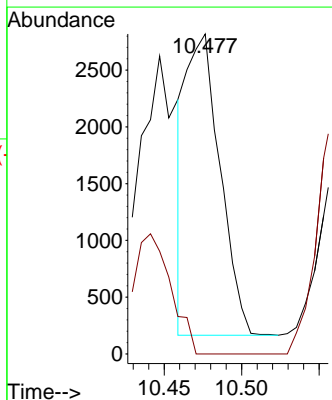
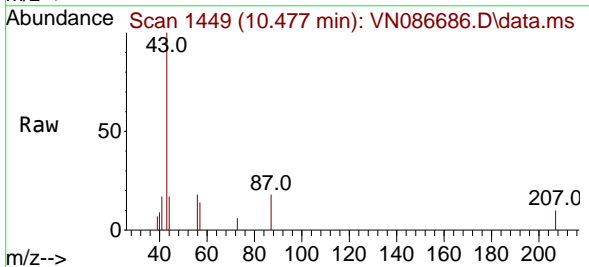
Instrument : MSVOA\_N  
 ClientSampleId : PB168034ZHE#03

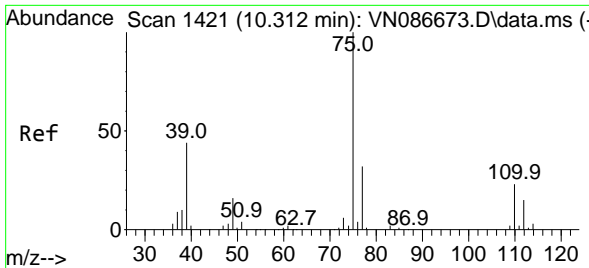
Tgt Ion: 98 Resp: 479827  
 Ion Ratio Lower Upper  
 98 100  
 100 65.3 52.9 79.3



#51  
 4-Methyl-2-Pentanone  
 Concen: 1.233 ug/l  
 RT: 10.477 min Scan# 1449  
 Delta R.T. 0.035 min  
 Lab File: VN086686.D  
 Acq: 19 May 2025 13:51

Tgt Ion: 43 Resp: 4066  
 Ion Ratio Lower Upper  
 43 100  
 58 0.0 33.9 50.9#

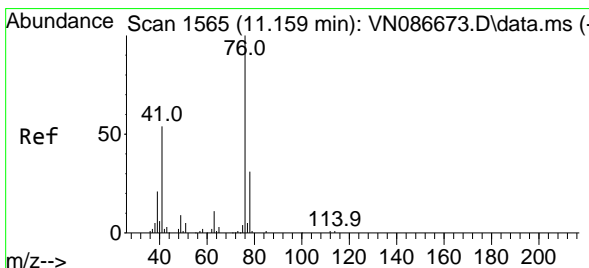
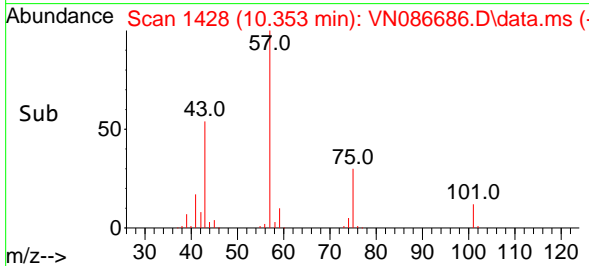
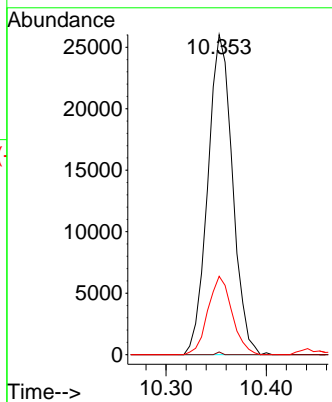
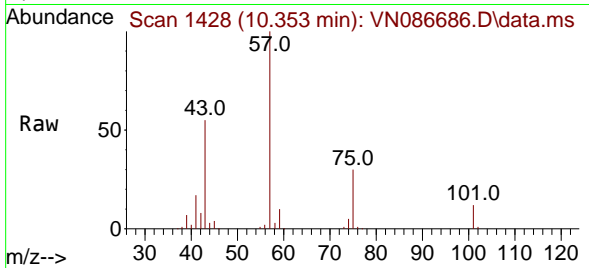




#54  
 cis-1,3-Dichloropropene  
 Concen: 11.073 ug/l  
 RT: 10.353 min Scan# 1428  
 Delta R.T. 0.041 min  
 Lab File: VN086686.D  
 Acq: 19 May 2025 13:51

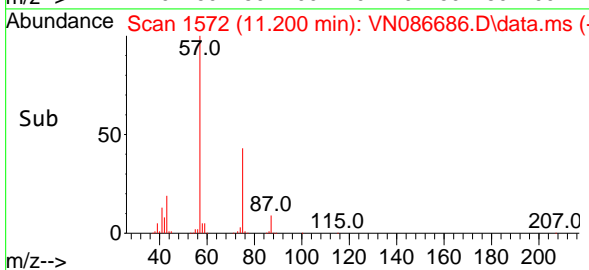
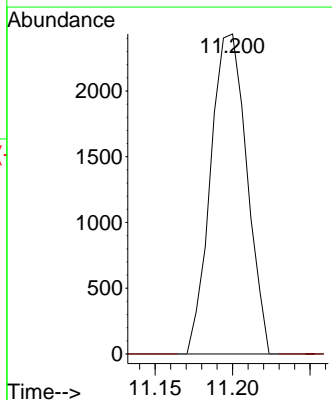
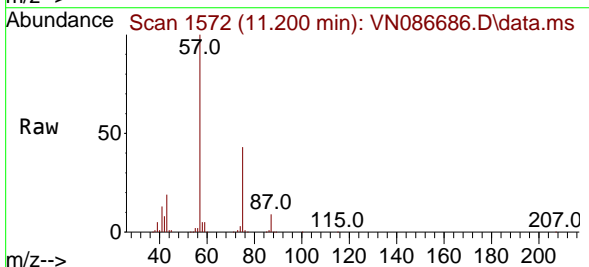
Instrument : MSVOA\_N  
 ClientSampleId : PB168034ZHE#03

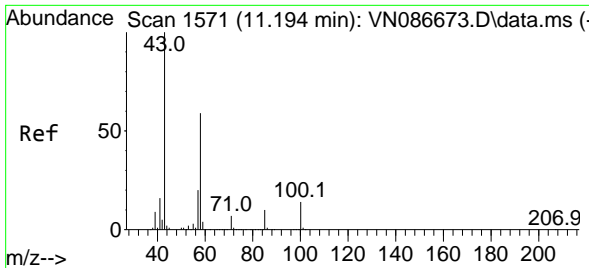
Tgt Ion	Resp	Lower	Upper
75	44509		
77	100	0.8	25.3
39	24.5	35.2	52.8#



#57  
 1,3-Dichloropropane  
 Concen: 0.941 ug/l  
 RT: 11.200 min Scan# 1572  
 Delta R.T. 0.041 min  
 Lab File: VN086686.D  
 Acq: 19 May 2025 13:51

Tgt Ion	Resp	Lower	Upper
76	3957		
78	100	0.0	25.8
			38.8#

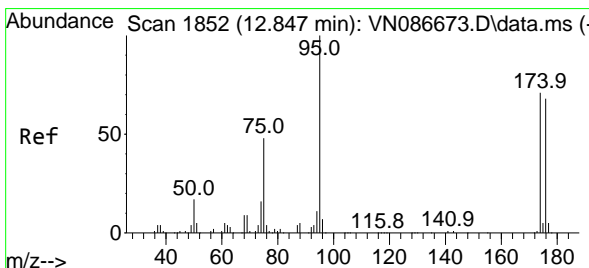
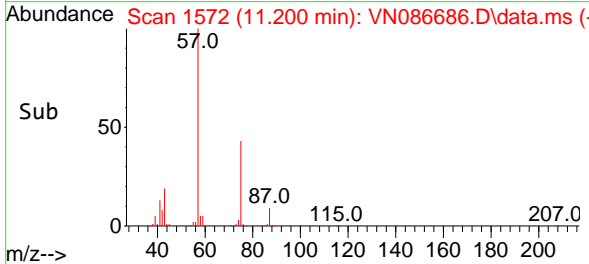
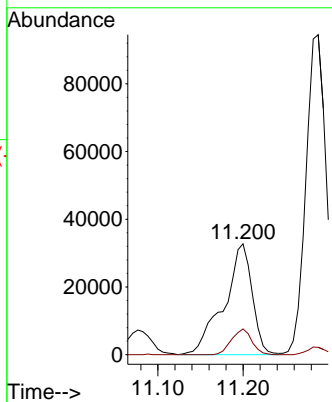
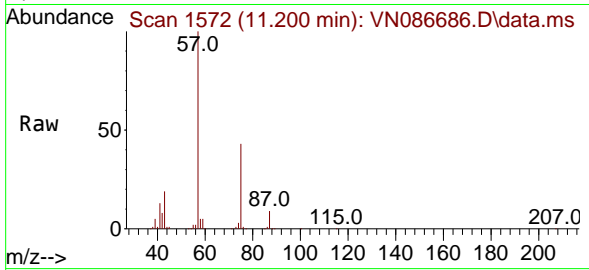




#59  
 2-Hexanone  
 Concen: 31.315 ug/l  
 RT: 11.200 min Scan# 111  
 Delta R.T. 0.006 min  
 Lab File: VN086686.D  
 Acq: 19 May 2025 13:51

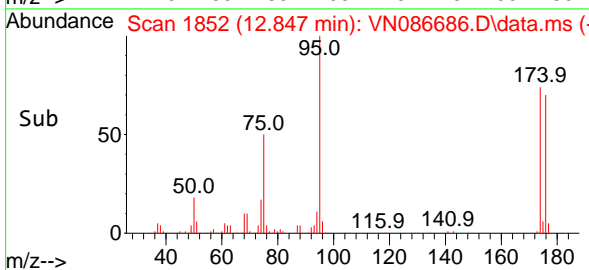
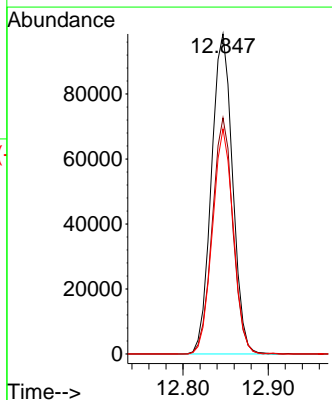
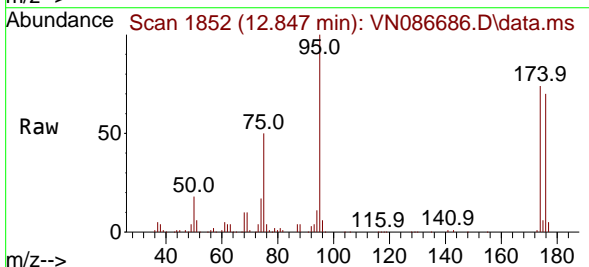
Instrument : MSVOA\_N  
 ClientSampleId : PB168034ZHE#03

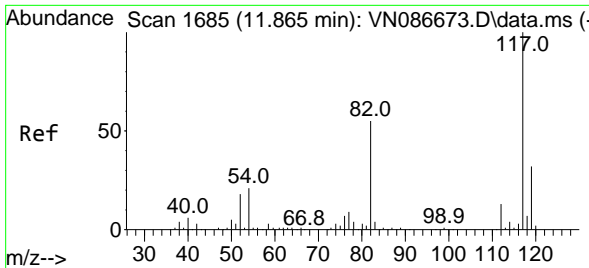
Tgt Ion: 43 Resp: 75384  
 Ion Ratio Lower Upper  
 43 100  
 58 16.6 29.8 89.5#



#62  
 4-Bromofluorobenzene  
 Concen: 53.134 ug/l  
 RT: 12.847 min Scan# 1852  
 Delta R.T. -0.000 min  
 Lab File: VN086686.D  
 Acq: 19 May 2025 13:51

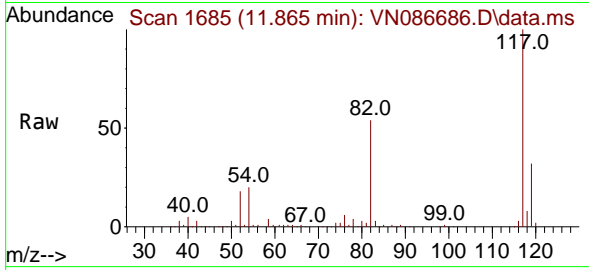
Tgt Ion: 95 Resp: 170145  
 Ion Ratio Lower Upper  
 95 100  
 174 72.0 0.0 145.4  
 176 69.2 0.0 137.8



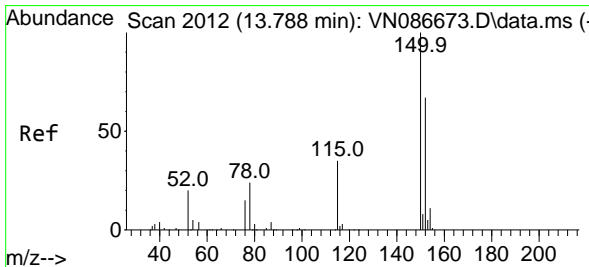
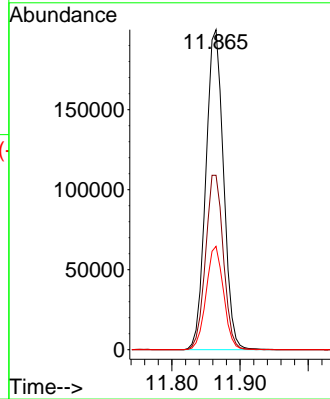
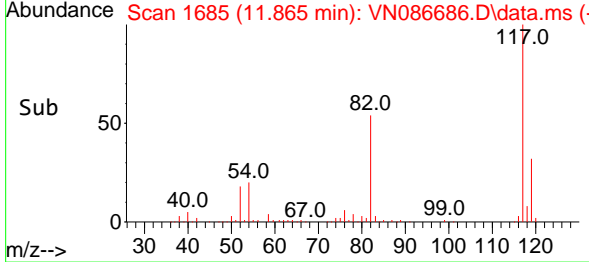


#63  
 Chlorobenzene-d5  
 Concen: 50.000 ug/l  
 RT: 11.865 min Scan# 117  
 Delta R.T. -0.000 min  
 Lab File: VN086686.D  
 Acq: 19 May 2025 13:51

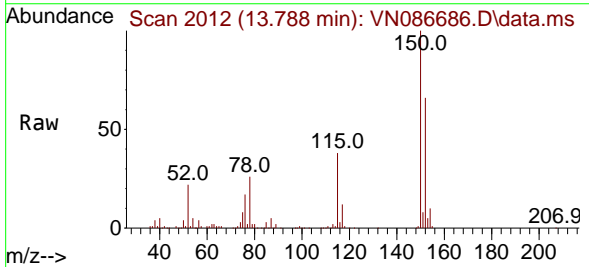
Instrument : MSVOA\_N  
 ClientSampleId : PB168034ZHE#03



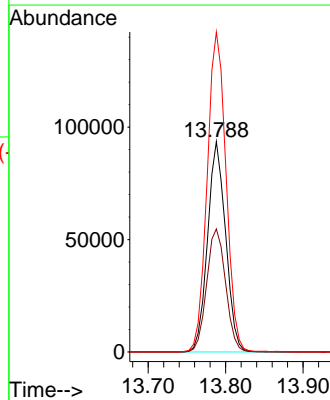
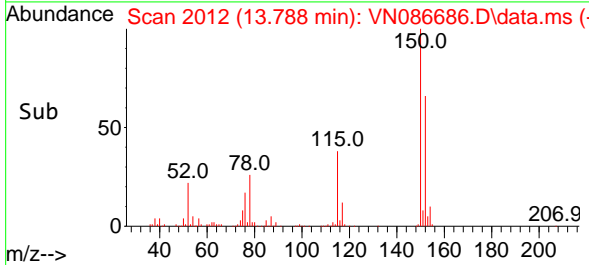
Tgt Ion:117 Resp: 361093  
 Ion Ratio Lower Upper  
 117 100  
 82 54.5 44.2 66.2  
 119 32.3 25.4 38.2

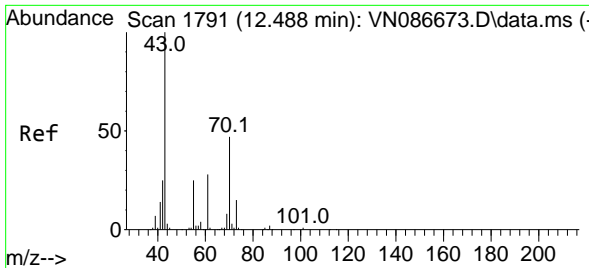


#72  
 1,4-Dichlorobenzene-d4  
 Concen: 50.000 ug/l  
 RT: 13.788 min Scan# 2012  
 Delta R.T. -0.000 min  
 Lab File: VN086686.D  
 Acq: 19 May 2025 13:51



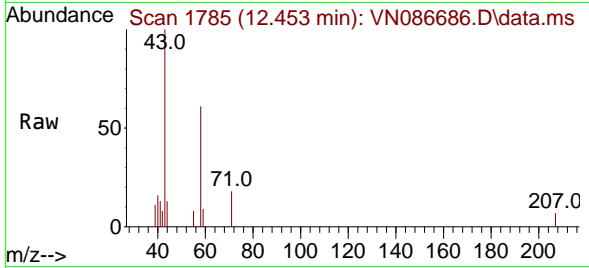
Tgt Ion:152 Resp: 151576  
 Ion Ratio Lower Upper  
 152 100  
 115 61.3 30.0 90.1  
 150 158.3 0.0 347.8





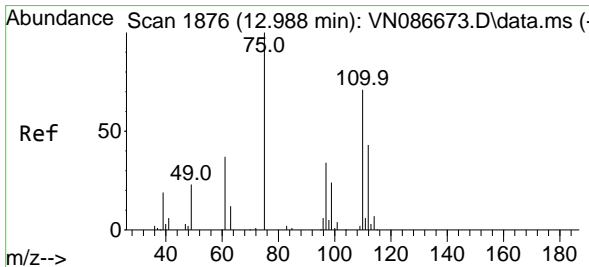
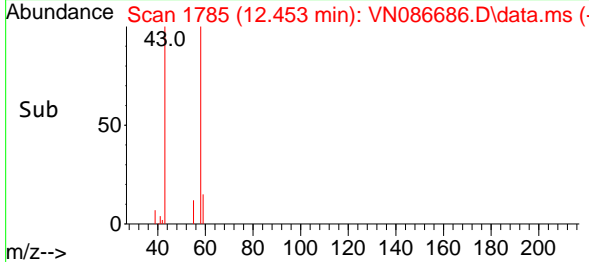
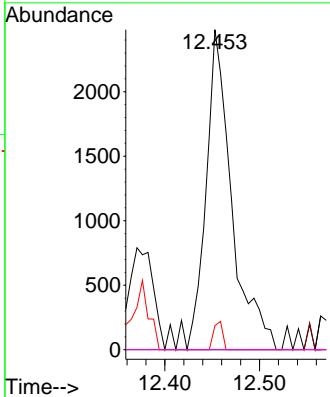
#74  
 N-amy1 acetate  
 Concen: 0.967 ug/l  
 RT: 12.453 min Scan# 11  
 Delta R.T. -0.035 min  
 Lab File: VN086686.D  
 Acq: 19 May 2025 13:51

Instrument : MSVOA\_N  
 ClientSampleId : PB168034ZHE#03



Tgt Ion: 43 Resp: 4730

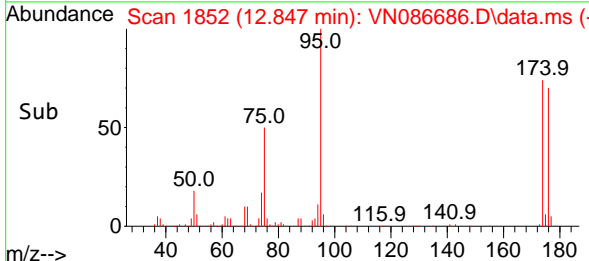
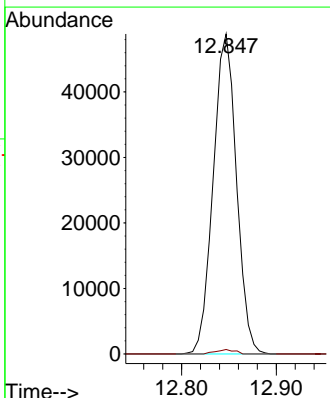
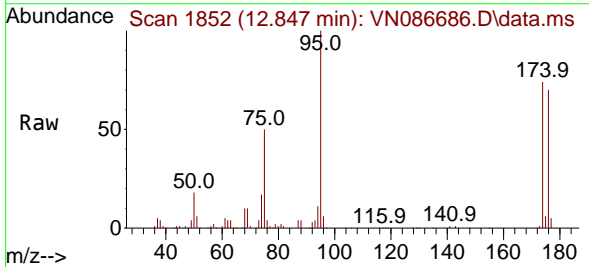
Ion	Ratio	Lower	Upper
43	100		
70	0.0	37.9	56.9#
55	3.0	20.5	30.7#
61	0.0	21.7	32.5#



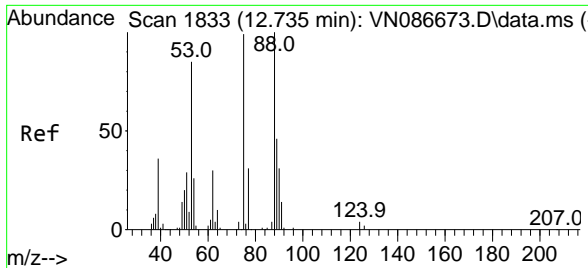
#76  
 1,2,3-Trichloropropane  
 Concen: 24.336 ug/l  
 RT: 12.847 min Scan# 1852  
 Delta R.T. -0.141 min  
 Lab File: VN086686.D  
 Acq: 19 May 2025 13:51

Tgt Ion: 75 Resp: 83424

Ion	Ratio	Lower	Upper
75	100		
77	1.1	96.0	288.1#

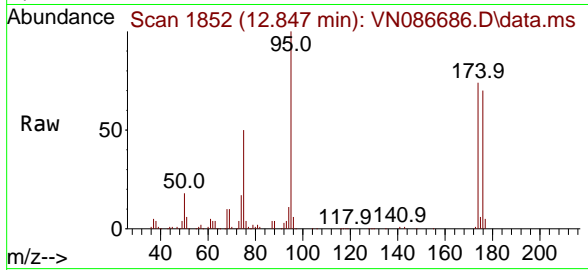






#81  
 trans-1,4-Dichloro-2-butene  
 Concen: 61.415 ug/l  
 RT: 12.847 min Scan# 11  
 Delta R.T. 0.112 min  
 Lab File: VN086686.D  
 Acq: 19 May 2025 13:51

Instrument : MSVOA\_N  
 ClientSampleId : PB168034ZHE#03



Tgt Ion: 75 Resp: 83424

Ion	Ratio	Lower	Upper
75	100		
53	0.0	70.4	105.6#
89	0.0	32.4	48.6#

