

Data Path : Z:\VOASRV\HPCHEM1\MSVOA N\DATA\VN052020\
 Data File : VN061511.D
 Acq On : 20 May 2020 19:24
 Operator : JC/MD
 Sample : PB129002TB
 Misc : 5.00mL/MSVOA N/WATER
 ALS Vial : 14 Sample Multiplier: 1

Instrument :
 MSVOA_N
 ClientSampleId :
 PB129002TB

Quant Time: May 21 08:05:19 2020
 Quant Method : Z:\VOASRV\HPCHEM1\MSVOA_N\METHODS\82N051820W.M
 Quant Title : SW846 8260
 QLast Update : Mon May 18 13:09:55 2020
 Response via : Initial Calibration

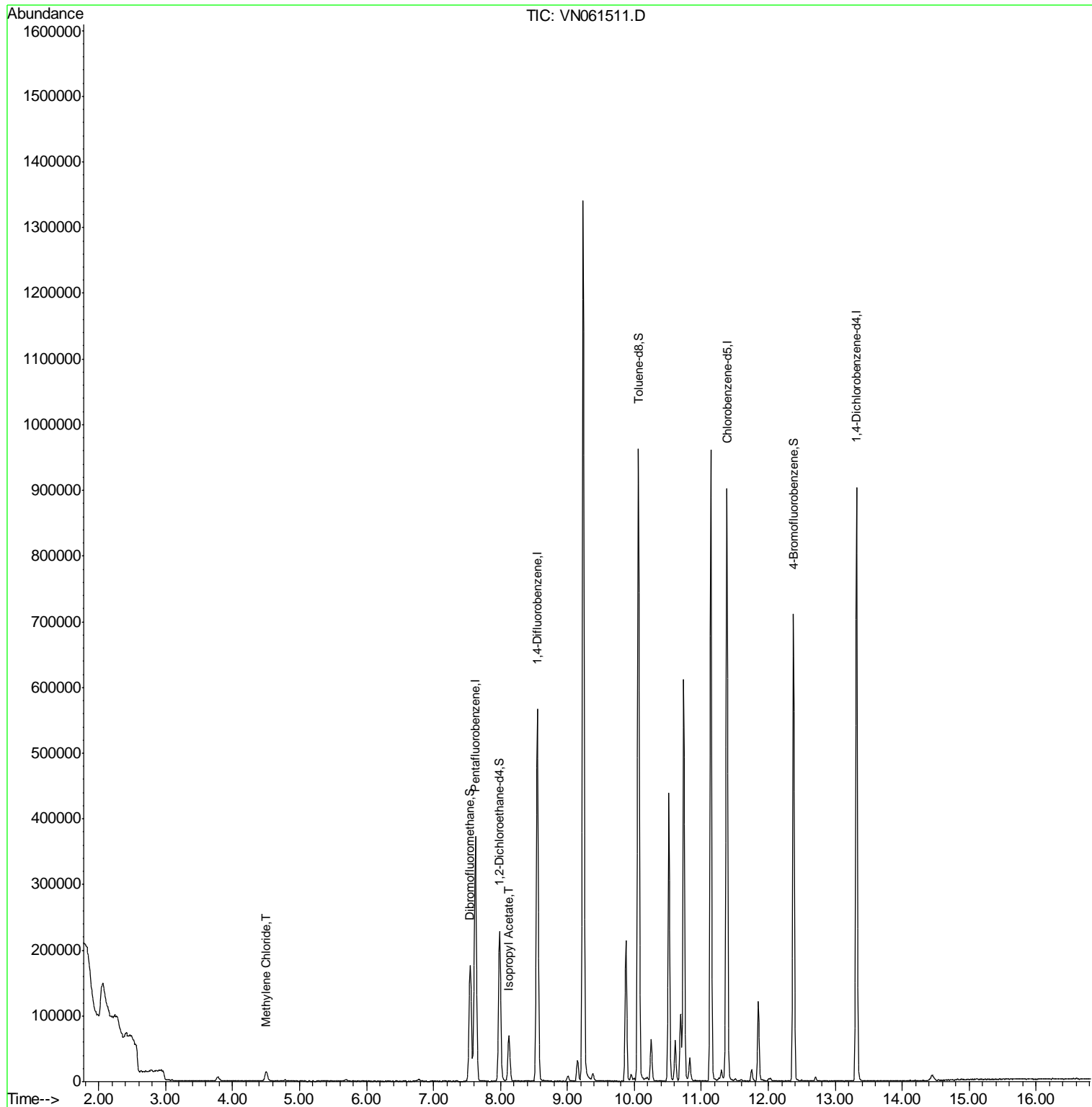
Internal Standards	R.T.	QIon	Response	Conc	Units	Dev(Min)
1) Pentafluorobenzene	7.63	168	289296	50.00	ug/l	0.00
34) 1,4-Difluorobenzene	8.55	114	529778	50.00	ug/l	0.00
63) Chlorobenzene-d5	11.38	117	533709	50.00	ug/l	0.00
72) 1,4-Dichlorobenzene-d4	13.32	152	237998	50.00	ug/l	0.00
System Monitoring Compounds						
33) 1,2-Dichloroethane-d4	7.99	65	197732	45.80	ug/l	0.00
Spiked Amount	50.000		Recovery	=	91.60%	
35) Dibromofluoromethane	7.55	113	136871	49.32	ug/l	0.00
Spiked Amount	50.000		Recovery	=	98.64%	
50) Toluene-d8	10.06	98	668401	51.92	ug/l	0.00
Spiked Amount	50.000		Recovery	=	103.84%	
62) 4-Bromofluorobenzene	12.38	95	259495	53.96	ug/l	0.00
Spiked Amount	50.000		Recovery	=	107.92%	
Target Compounds						
20) Methylene Chloride	4.50	84	11261	3.174	ug/l	93
43) Isopropyl Acetate	8.13	43	80994	10.337	ug/l #	91

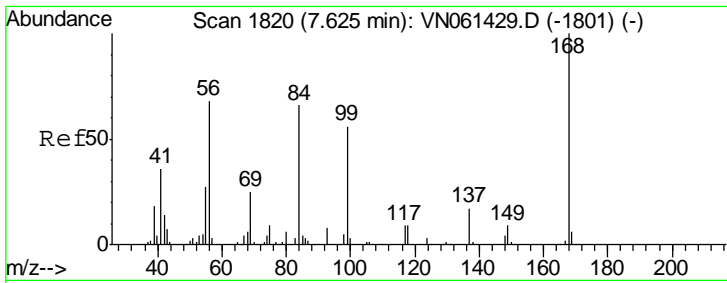
(#) = qualifier out of range (m) = manual integration (+) = signals summed

Data Path : Z:\VOASRV\HPCHEM1\MSVOA N\DATA\VN052020\
 Data File : VN061511.D
 Acq On : 20 May 2020 19:24
 Operator : JC/MD
 Sample : PB129002TB
 Misc : 5.00mL/MSVOA N/WATER
 ALS Vial : 14 Sample Multiplier: 1

Instrument :
 MSVOA_N
 ClientSampleId :
 PB129002TB

Quant Time: May 21 08:05:19 2020
 Quant Method : Z:\VOASRV\HPCHEM1\MSVOA_N\METHODS\82N051820W.M
 Quant Title : SW846 8260
 QLast Update : Mon May 18 13:09:55 2020
 Response via : Initial Calibration

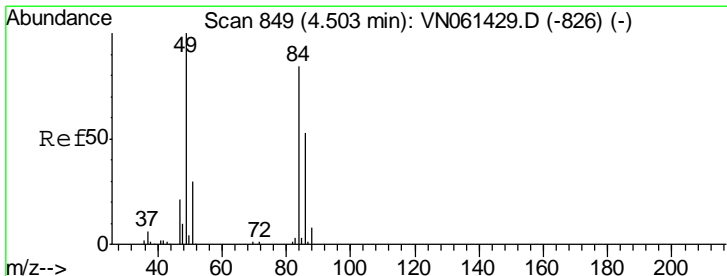
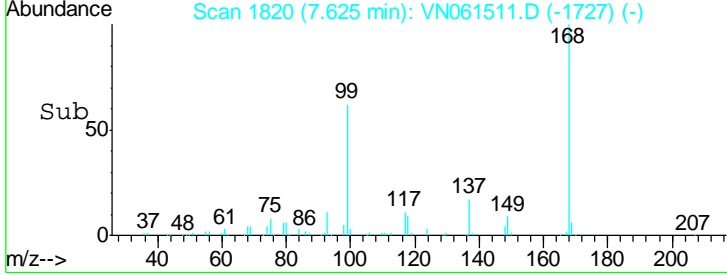
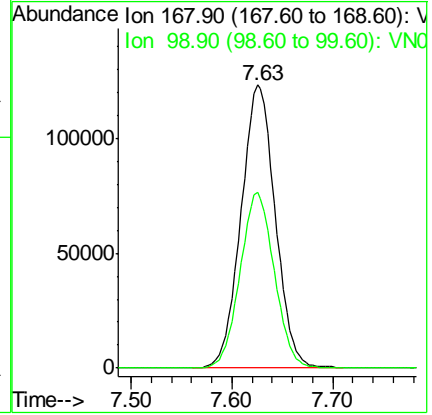
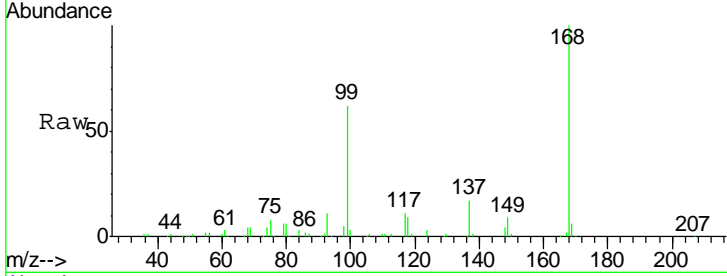




#1
 Pentafluorobenzene
 Concen: 50.000 ug/l
 RT: 7.63 min Scan# 1820
 Delta R.T. 0.00 min
 Lab File: VN061511.D
 Acq: 20 May 2020 19:24

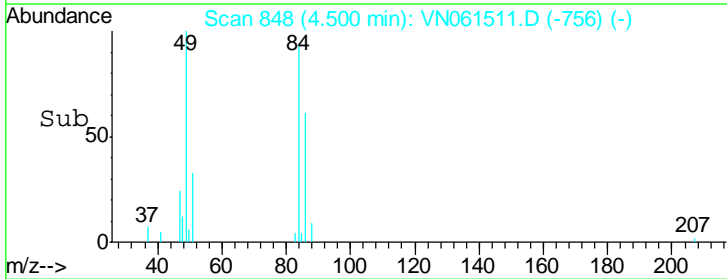
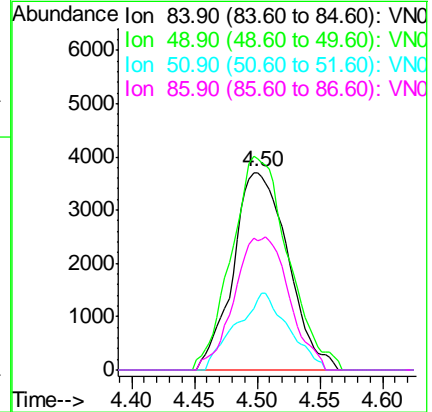
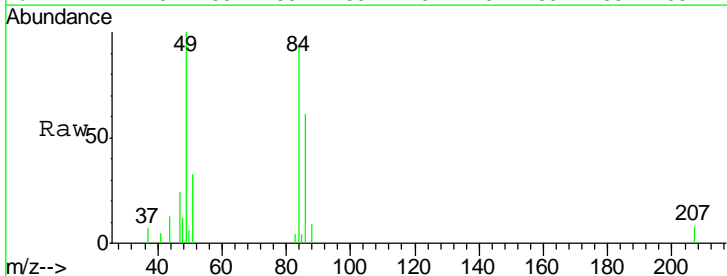
Instrument : MSVOA_N
 ClientSampled : PB129002TB

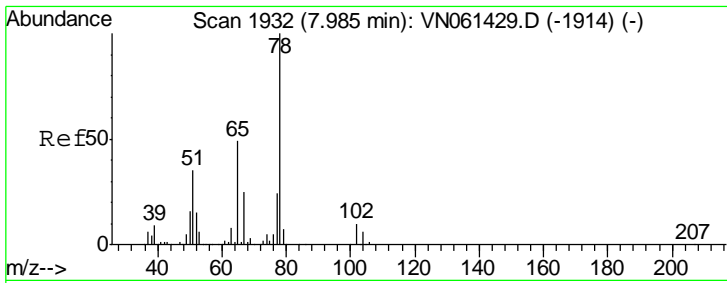
Tgt Ion	Resp	Lower	Upper
168	100		
99	62.2	51.1	76.7



#20
 Methylene Chloride
 Concen: 3.174 ug/l
 RT: 4.50 min Scan# 848
 Delta R.T. -0.00 min
 Lab File: VN061511.D
 Acq: 20 May 2020 19:24

Tgt Ion	Resp	Lower	Upper
84	100		
49	107.0	95.3	142.9
51	35.6	29.0	43.6
86	65.6	50.2	75.2

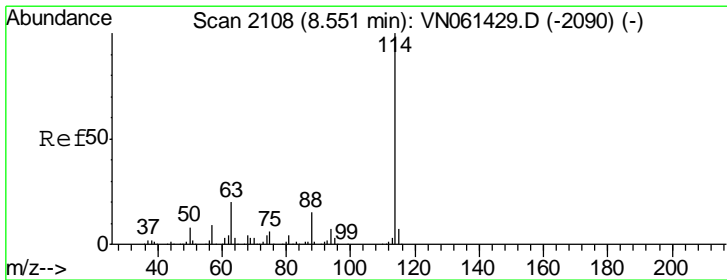
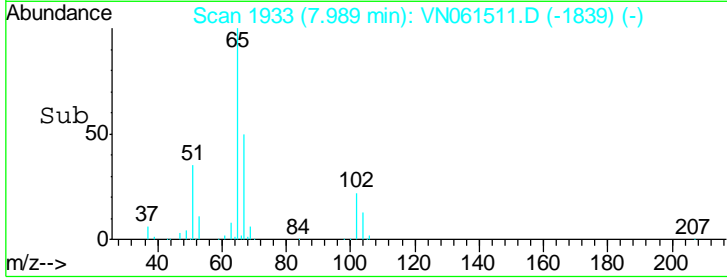
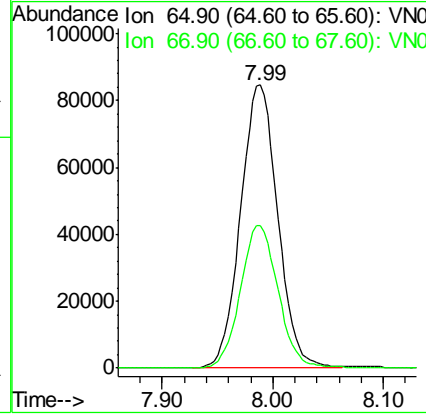
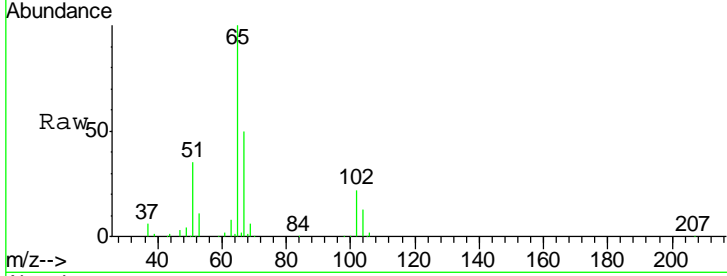




#33
 1,2-Dichloroethane-d4
 Concen: 45.797 ug/l
 RT: 7.99 min Scan# 1933
 Delta R.T. 0.00 min
 Lab File: VN061511.D
 Acq: 20 May 2020 19:24

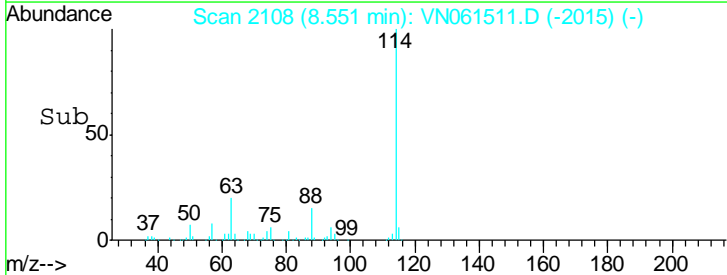
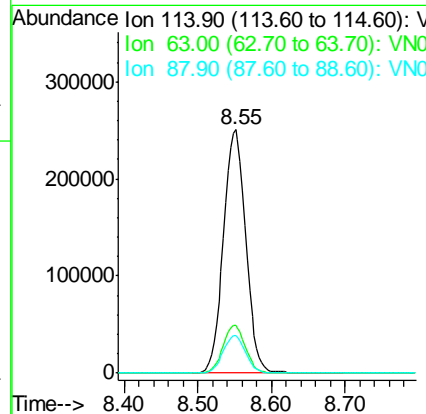
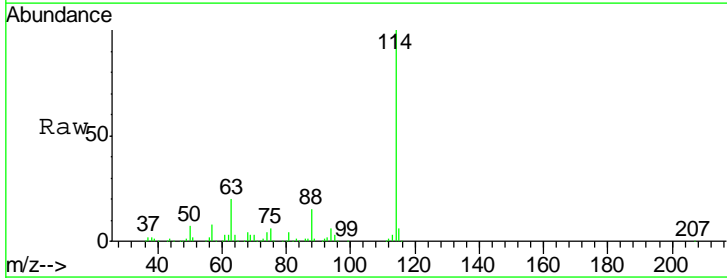
Instrument :
 MSVOA_N
 ClientSampled :
 PB129002TB

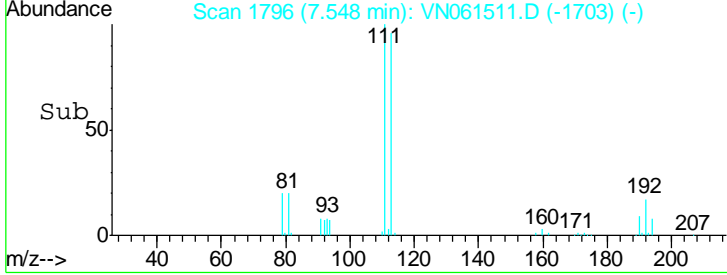
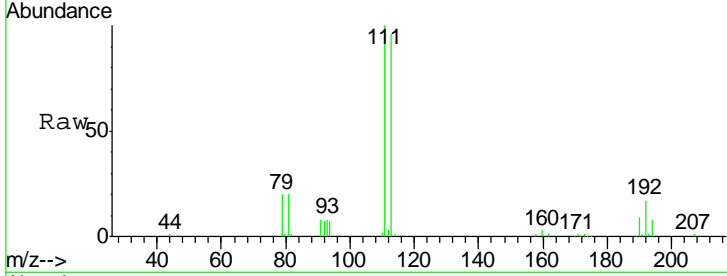
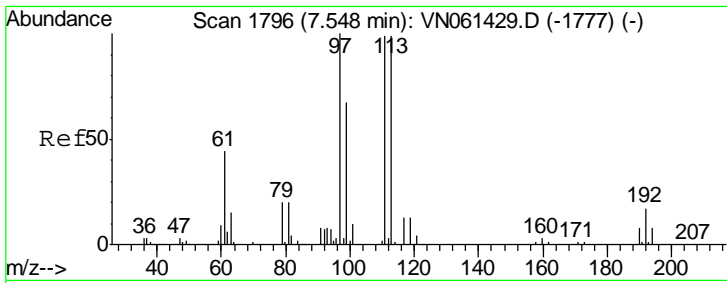
Tgt Ion: 65 Resp: 197732
 Ion Ratio Lower Upper
 65 100
 67 50.9 0.0 101.4



#34
 1,4-Difluorobenzene
 Concen: 50.000 ug/l
 RT: 8.55 min Scan# 2108
 Delta R.T. 0.00 min
 Lab File: VN061511.D
 Acq: 20 May 2020 19:24

Tgt Ion: 114 Resp: 529778
 Ion Ratio Lower Upper
 114 100
 63 19.7 0.0 40.8
 88 15.4 0.0 30.8

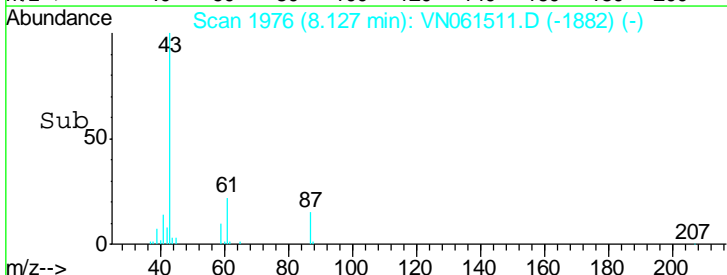
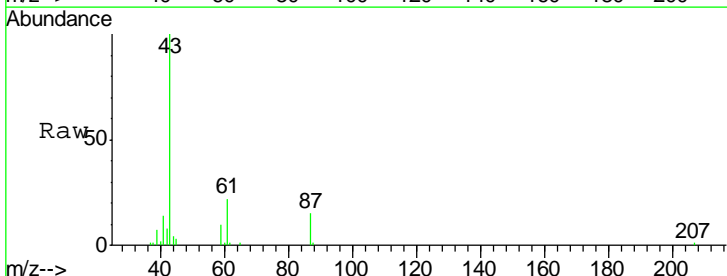
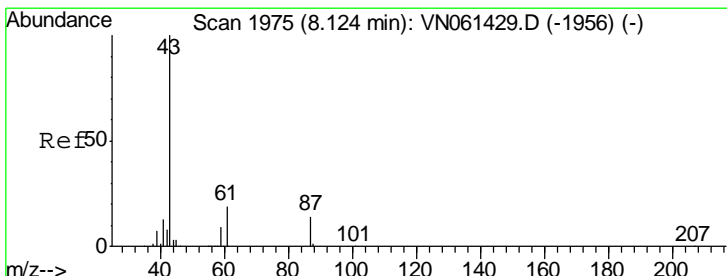
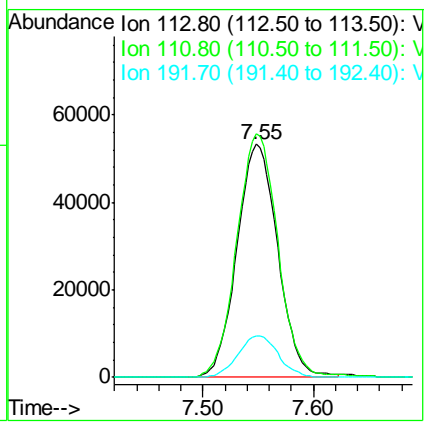




#35
 Dibromofluoromethane
 Concen: 49.316 ug/l
 RT: 7.55 min Scan# 1796
 Delta R.T. 0.00 min
 Lab File: VN061511.D
 Acq: 20 May 2020 19:24

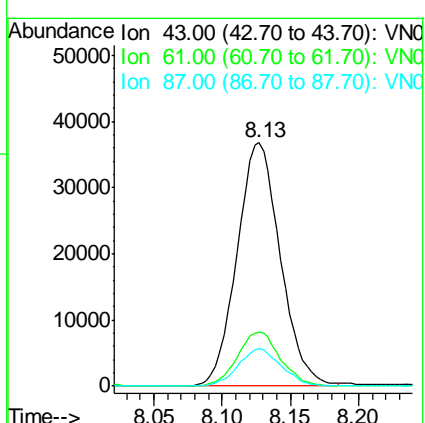
Instrument : MSVOA_N
 ClientSampled : PB129002TB

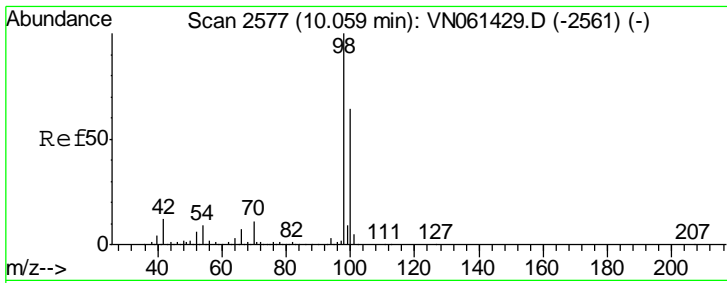
Tgt Ion	Resp	Lower	Upper
113	136871		
111	104.7	80.6	121.0
192	17.8	13.2	19.8



#43
 Isopropyl Acetate
 Concen: 10.337 ug/l
 RT: 8.13 min Scan# 1976
 Delta R.T. 0.00 min
 Lab File: VN061511.D
 Acq: 20 May 2020 19:24

Tgt Ion	Resp	Lower	Upper
43	80994		
61	21.9	23.0	34.4#
87	15.1	11.6	17.4

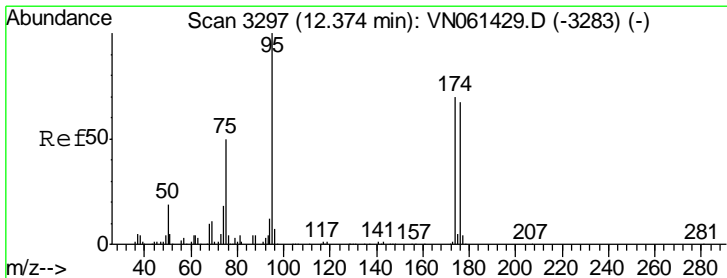
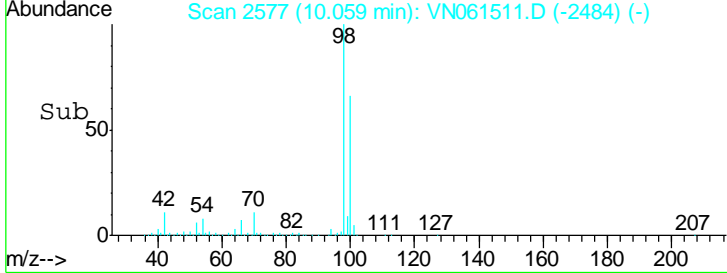
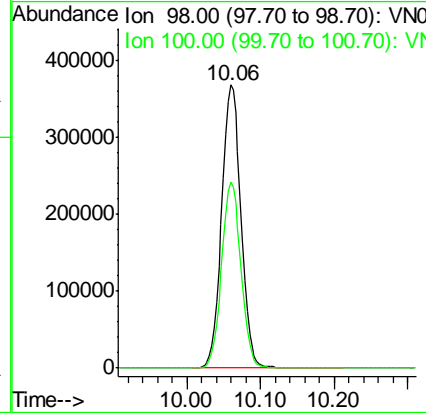
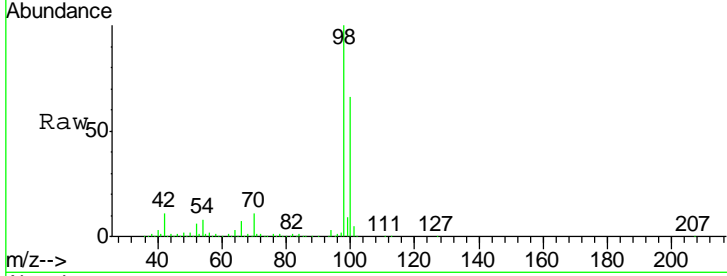




#50
 Toluene-d8
 Concen: 51.924 ug/l
 RT: 10.06 min Scan# 2577
 Delta R.T. 0.00 min
 Lab File: VN061511.D
 Acq: 20 May 2020 19:24

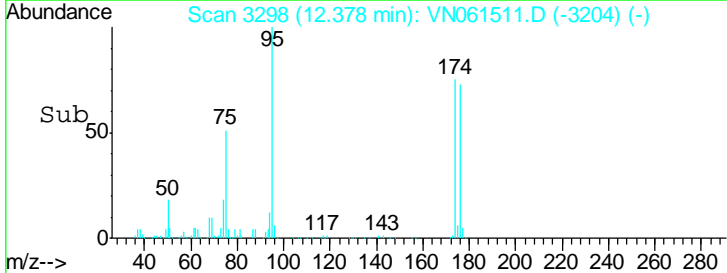
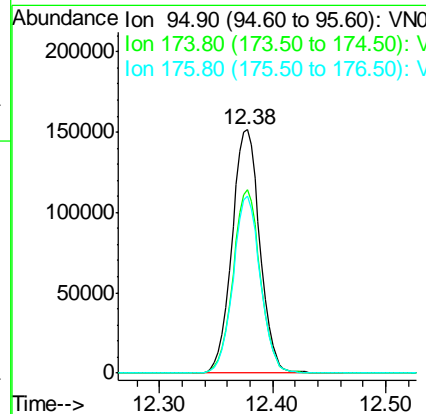
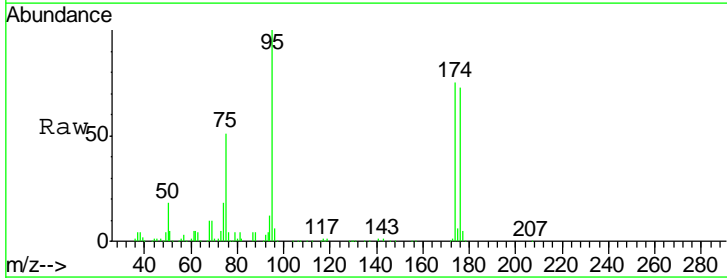
Instrument :
 MSVOA_N
 ClientSampled :
 PB129002TB

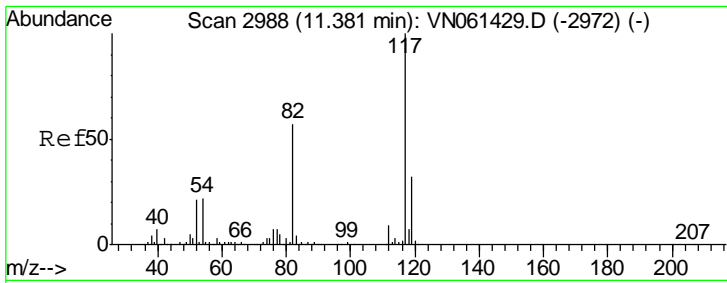
Tgt Ion	Resp	Lower	Upper
98	100		
100	65.7	51.8	77.8



#62
 4-Bromofluorobenzene
 Concen: 53.956 ug/l
 RT: 12.38 min Scan# 3298
 Delta R.T. 0.00 min
 Lab File: VN061511.D
 Acq: 20 May 2020 19:24

Tgt Ion	Resp	Lower	Upper
95	100		
174	73.7	0.0	141.2
176	71.0	0.0	137.6

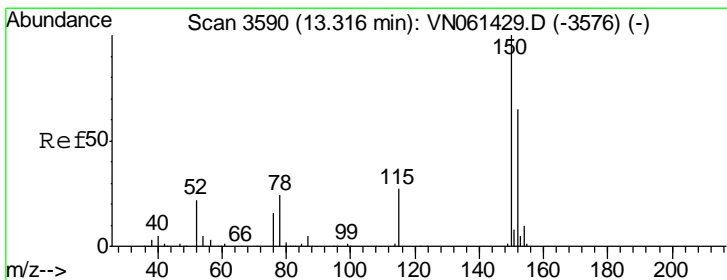
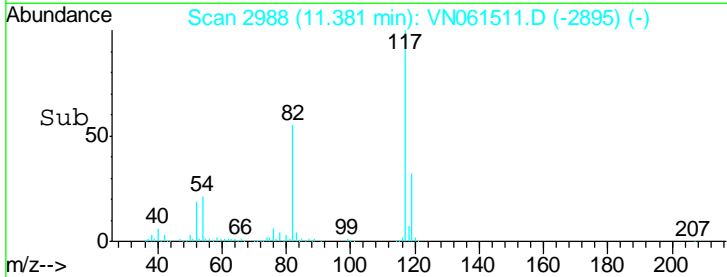
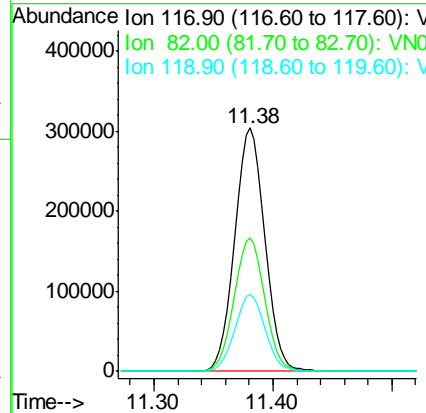
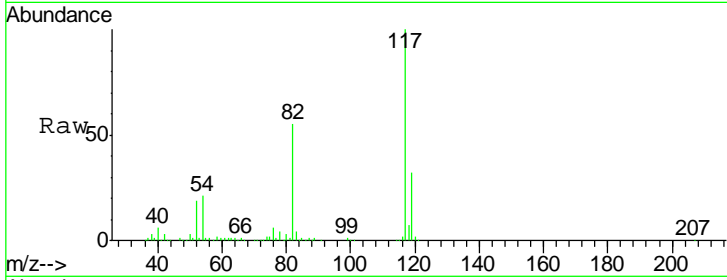




#63
 Chlorobenzene-d5
 Concen: 50.000 ug/l
 RT: 11.38 min Scan# 2988
 Delta R.T. 0.00 min
 Lab File: VN061511.D
 Acq: 20 May 2020 19:24

Instrument :
 MSVOA_N
 ClientSampled :
 PB129002TB

Tgt Ion	Resp	Lower	Upper
117	100		
82	55.0	45.2	67.8
119	31.7	25.3	37.9



#72
 1,4-Dichlorobenzene-d4
 Concen: 50.000 ug/l
 RT: 13.32 min Scan# 3591
 Delta R.T. 0.00 min
 Lab File: VN061511.D
 Acq: 20 May 2020 19:24

Tgt Ion	Resp	Lower	Upper
152	100		
115	61.2	30.9	92.5
150	157.2	0.0	349.2

