

Data Path : Z:\voasrv\HPCHEM1\MSVOA_N\Data\VN052124\
 Data File : VN082264.D
 Acq On : 22 May 2024 01:33
 Operator : JC\MD
 Sample : P2494-04 40X
 Misc : 5.07g/10mL/100uL/5.00mL/MSVOA_N/MEOH
 ALS Vial : 39 Sample Multiplier: 1

Instrument :
 MSVOA_N
 ClientSampleId :
 4

Integration Parameters: RTEINT.P

Integrator: RTE
 Smoothing : ON Filtering: 5
 Sampling : 1 Min Area: 3 % of largest Peak
 Start Thrs: 0.2 Max Peaks: 100
 Stop Thrs : 0 Peak Location: TOP

If leading or trailing edge < 100 prefer < Baseline drop else tangent >
 Peak separation: 5

Method : Z:\voasrv\HPCHEM1\MSVOA_N\methods\82N051524W.M
 Title : SW846 8260

Signal : TIC: VN082264.D\data.ms

peak #	R.T. min	first scan	max scan	last scan	PK TY	peak height	corr. area	corr. % max.	% of total
1	8.171	1045	1057	1061	rBV	138726	332585	5.29%	1.456%
2	8.224	1061	1066	1080	rVB	252443	585670	9.32%	2.563%
3	8.582	1116	1127	1138	rBV2	172071	437869	6.96%	1.916%
4	9.100	1207	1215	1226	rBV	385740	785020	12.49%	3.436%
5	10.570	1456	1465	1471	rBV	586779	1118743	17.79%	4.896%
6	10.635	1471	1476	1484	rVB	111103	202879	3.23%	0.888%
7	11.865	1678	1685	1695	rBV	550332	988388	15.72%	4.326%
8	11.965	1696	1702	1708	rVV	45513	74746	1.19%	0.327%
9	12.070	1712	1720	1732	rVV	247472	471554	7.50%	2.064%
10	12.400	1763	1776	1784	rBV	247843	469032	7.46%	2.053%
11	12.600	1795	1810	1812	rBV8	24292	82319	1.31%	0.360%
12	12.853	1847	1853	1862	rVB	446145	770364	12.25%	3.372%
13	13.100	1889	1895	1902	rBV	100672	221191	3.52%	0.968%
14	13.176	1902	1908	1915	rVB2	218354	421373	6.70%	1.844%
15	13.335	1921	1935	1942	rBV3	91489	283565	4.51%	1.241%
16	13.482	1951	1960	1965	rBV	360199	594711	9.46%	2.603%
17	13.529	1965	1968	1973	rVB3	50119	74823	1.19%	0.327%
18	13.676	1973	1993	2007	rBV10	121209	673190	10.71%	2.946%
19	13.794	2007	2013	2022	rBV2	553756	1207660	19.21%	5.285%
20	14.017	2033	2051	2058	rBV5	218407	835687	13.29%	3.657%
21	14.106	2061	2066	2073	rVV3	188867	392246	6.24%	1.717%
22	14.176	2073	2078	2084	rVB2	268255	450107	7.16%	1.970%
23	14.247	2086	2090	2092	rBV	44904	64906	1.03%	0.284%
24	14.329	2100	2104	2109	rVB	54457	85130	1.35%	0.373%
25	14.441	2117	2123	2127	rBV2	66830	131841	2.10%	0.577%
26	14.576	2143	2146	2150	rVB4	60098	94367	1.50%	0.413%
27	14.629	2150	2155	2157	rBV2	71720	105557	1.68%	0.462%
28	14.658	2157	2160	2163	rVV3	81023	129296	2.06%	0.566%
29	14.694	2163	2166	2170	rVB	104014	135203	2.15%	0.592%
30	14.794	2177	2183	2187	rBV5	43091	93462	1.49%	0.409%
31	14.847	2188	2192	2201	rVB9	39062	111503	1.77%	0.488%
32	14.958	2202	2211	2218	rVB4	122723	246822	3.93%	1.080%
33	15.041	2218	2225	2233	rBV4	152259	457588	7.28%	2.003%
34	15.211	2249	2254	2260	rVB2	72915	139975	2.23%	0.613%
35	15.317	2267	2272	2281	rVV4	54703	139758	2.22%	0.612%
36	15.435	2287	2292	2299	rVB4	58304	129613	2.06%	0.567%

Data Path : Z:\voasrv\HPCHEM1\MSVOA_N\Data\VN052124\
Data File : VN082264.D
Acq On : 22 May 2024 01:33
Operator : JC\MD
Sample : P2494-04 40X
Misc : 5.07g/10mL/100uL/5.00mL/MSVOA_N/MEOH
ALS Vial : 39 Sample Multiplier: 1

Instrument :
MSVOA_N
ClientSampleId :
4

Integration Parameters: RTEINT.P

Integrator: RTE

Smoothing : ON

Sampling : 1

Start Thrs: 0.2

Stop Thrs : 0

Filtering: 5

Min Area: 3 % of largest Peak

Max Peaks: 100

Peak Location: TOP

If leading or trailing edge < 100 prefer < Baseline drop else tangent >

Peak separation: 5

Method : Z:\voasrv\HPCHEM1\MSVOA_N\methods\82N051524W.M

Title : SW846 8260

37	15.641	2315	2327	2338	rBV	3223713	6287257	100.00%	27.517%
38	15.747	2339	2345	2350	rVB3	78521	152036	2.42%	0.665%
39	15.941	2370	2378	2386	rBV7	46876	151275	2.41%	0.662%
40	16.494	2466	2472	2478	rBV5	29265	66660	1.06%	0.292%
41	16.717	2503	2510	2513	rBV2	42833	95505	1.52%	0.418%
42	16.782	2513	2521	2522	rBV	1652708	2557408	40.68%	11.193%

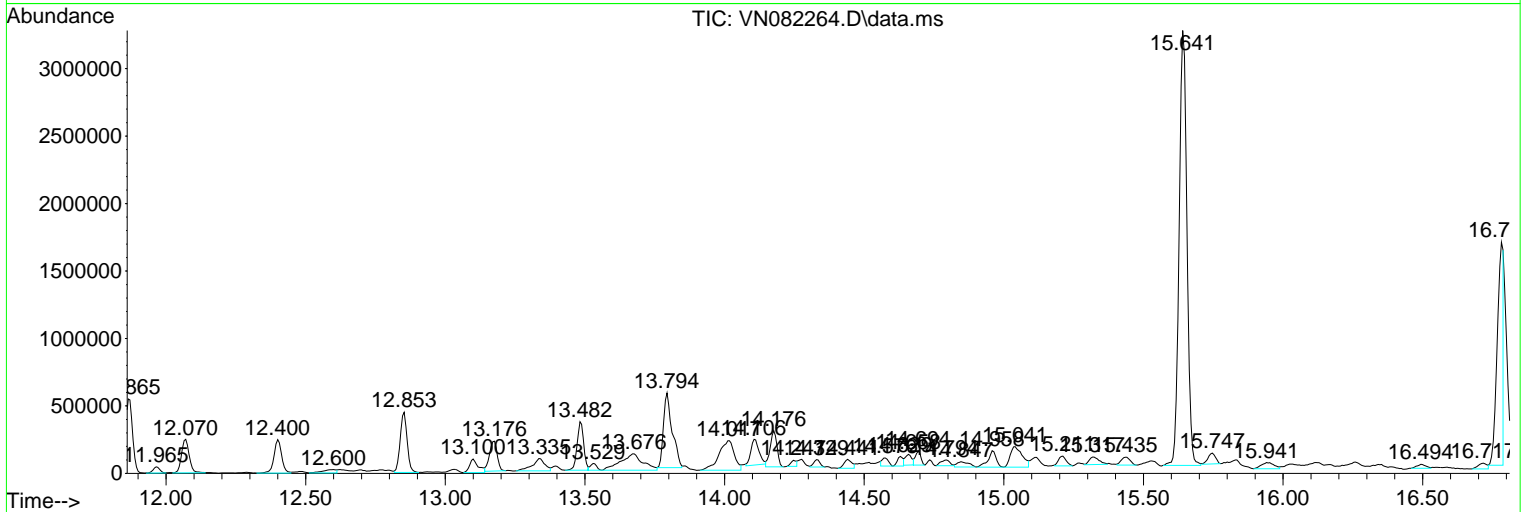
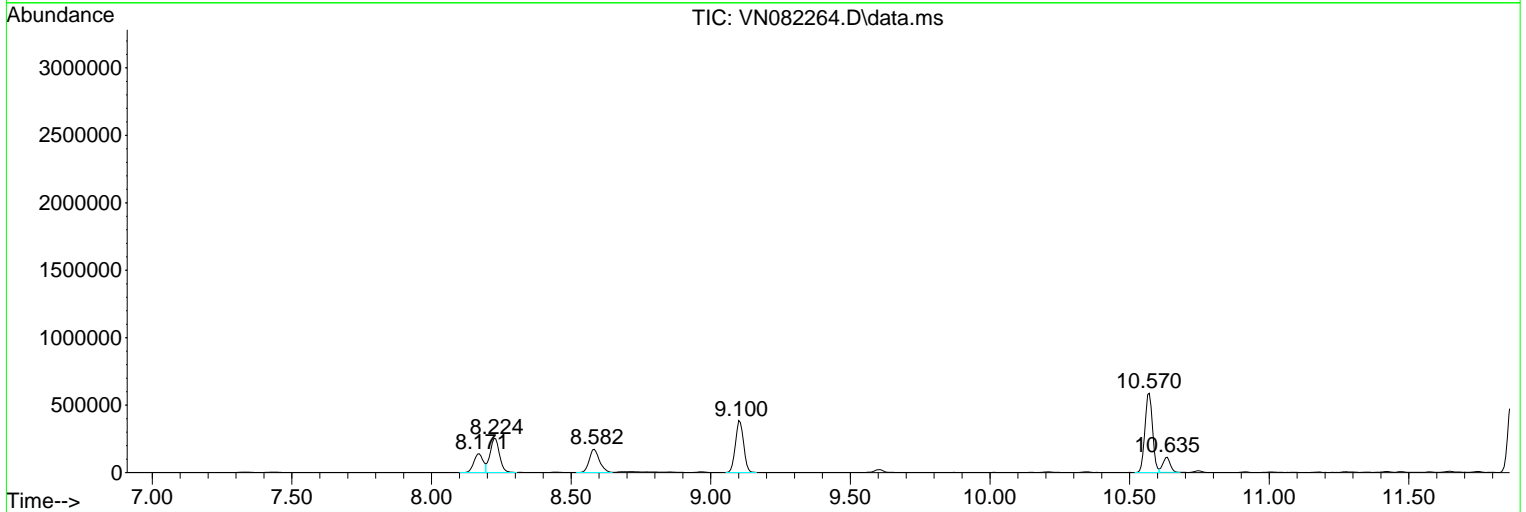
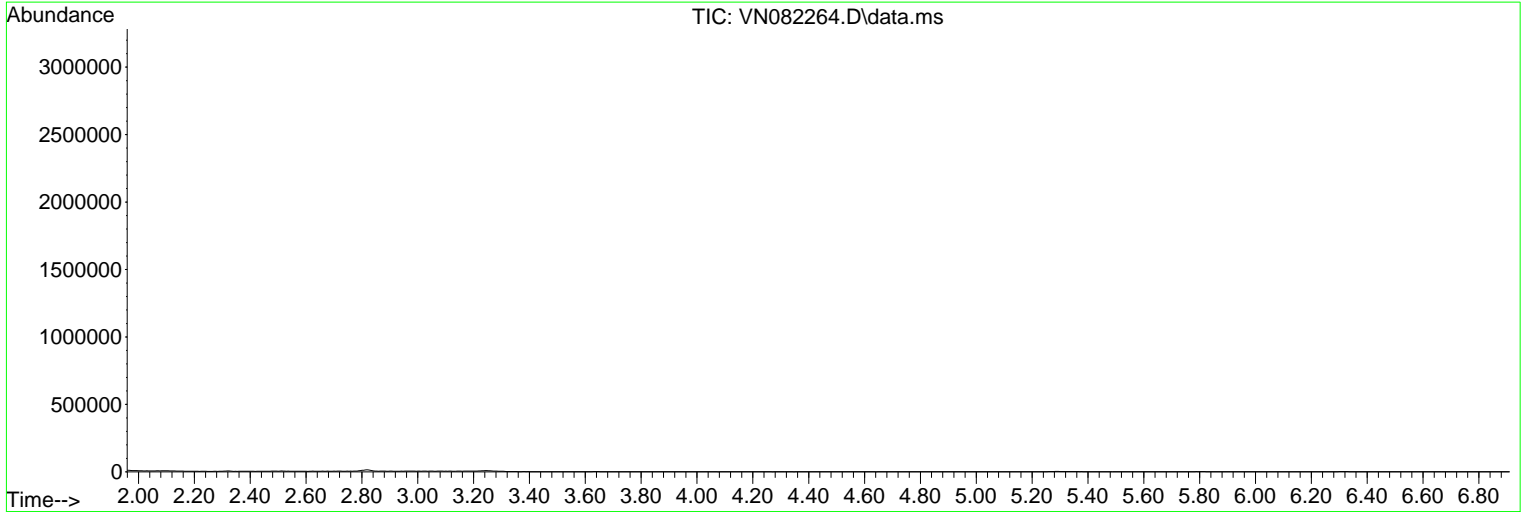
Sum of corrected areas: 22848884

Data Path : Z:\voasrv\HPCHEM1\MSVOA_N\Data\VN052124\
 Data File : VN082264.D
 Acq On : 22 May 2024 01:33
 Operator : JC\MD
 Sample : P2494-04 40X
 Misc : 5.07g/10mL/100uL/5.00mL/MSVOA_N/MEOH
 ALS Vial : 39 Sample Multiplier: 1

Instrument :
 MSVOA_N
 ClientSampleId :
 4

Quant Method : Z:\voasrv\HPCHEM1\MSVOA_N\methods\82N051524W.M
 Quant Title : SW846 8260

TIC Library : C:\Database\NIST20.L
 TIC Integration Parameters: LSCINT.P



Data Path : Z:\voasrv\HPCHEM1\MSVOA_N\Data\VN052124\
 Data File : VN082264.D
 Acq On : 22 May 2024 01:33
 Operator : JC\MD
 Sample : P2494-04 40X
 Misc : 5.07g/10mL/100uL/5.00mL/MSVOA_N/MEOH
 ALS Vial : 39 Sample Multiplier: 1

Instrument :
 MSVOA_N
 ClientSampleId :
 4

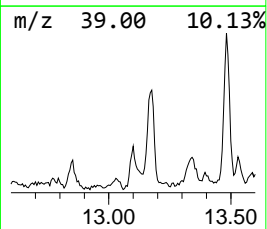
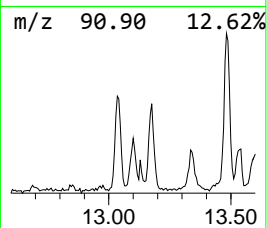
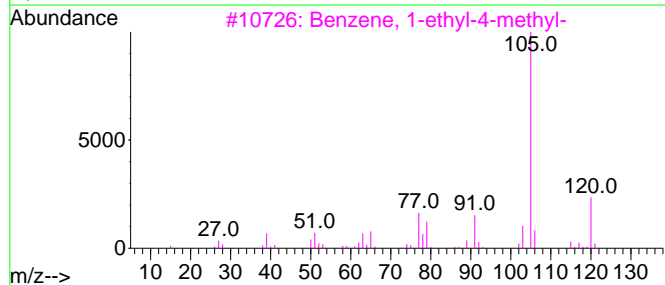
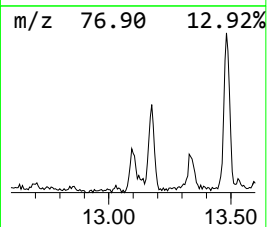
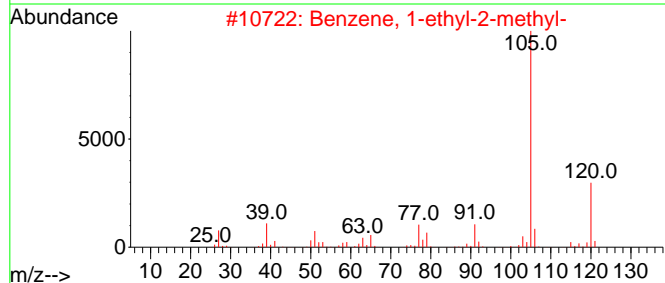
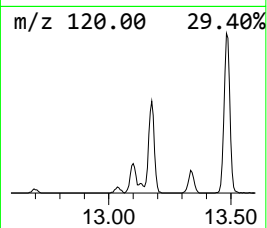
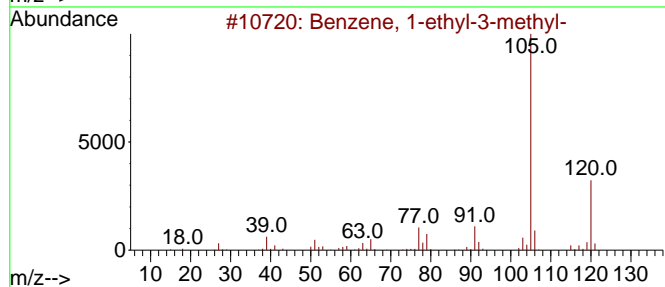
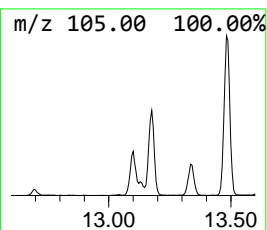
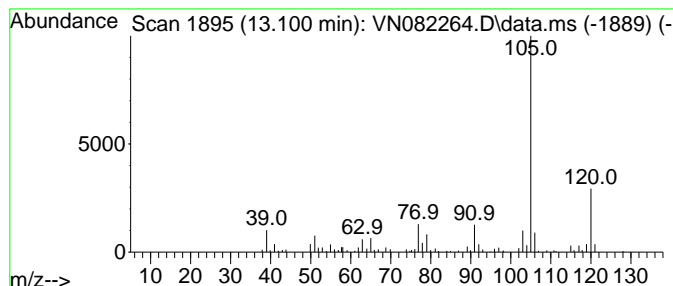
Quant Method : Z:\voasrv\HPCHEM1\MSVOA_N\methods\82N051524W.M
 Quant Title : SW846 8260

TIC Library : C:\Database\NIST20.L
 TIC Integration Parameters: LSCINT.P

 Peak Number 1 Benzene, 1-ethyl-3-methyl- Concentration Rank 9

R.T.	EstConc	Area	Relative to ISTD	R.T.
13.100	9.16 ug/l	221191	1,4-Dichlorobenzene-d4	13.794

Hit#	of	5	Tentative ID	MW	MolForm	CAS#	Qual
1			Benzene, 1-ethyl-3-methyl-	120	C9H12	000620-14-4	97
2			Benzene, 1-ethyl-2-methyl-	120	C9H12	000611-14-3	95
3			Benzene, 1-ethyl-4-methyl-	120	C9H12	000622-96-8	95
4			Mesitylene	120	C9H12	000108-67-8	91
5			Benzene, 1,2,4-trimethyl-	120	C9H12	000095-63-6	91



Data Path : Z:\voasrv\HPCHEM1\MSVOA_N\Data\VN052124\
 Data File : VN082264.D
 Acq On : 22 May 2024 01:33
 Operator : JC\MD
 Sample : P2494-04 40X
 Misc : 5.07g/10mL/100uL/5.00mL/MSVOA_N/MEOH
 ALS Vial : 39 Sample Multiplier: 1

Instrument :
 MSVOA_N
 ClientSampleId :
 4

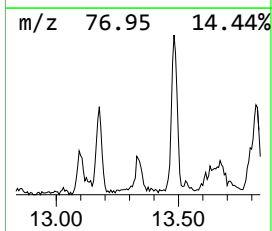
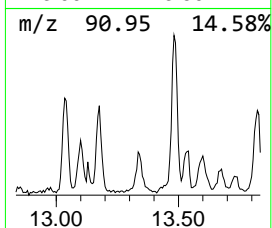
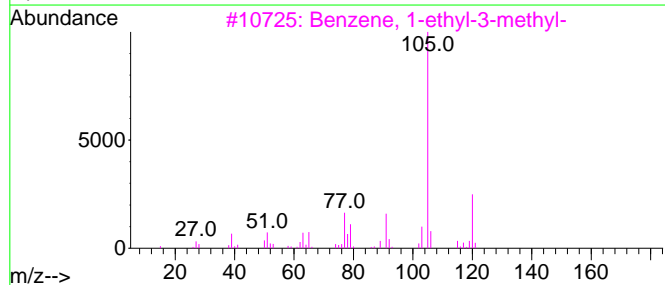
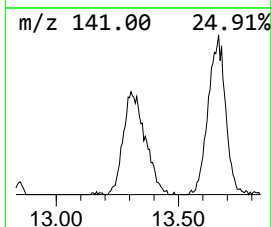
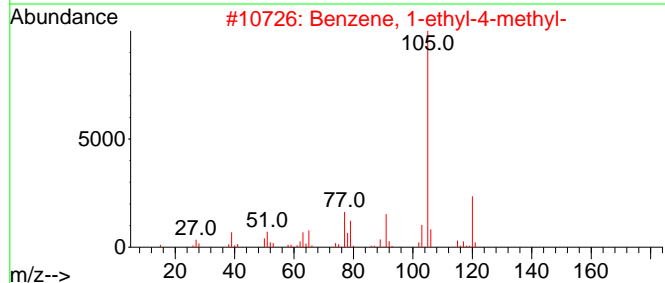
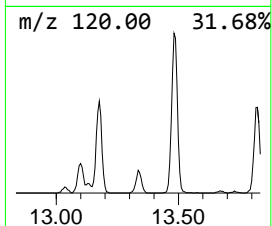
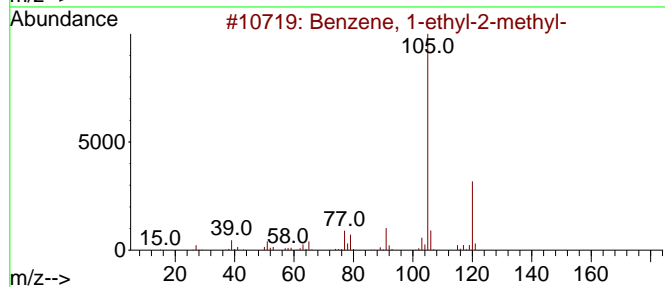
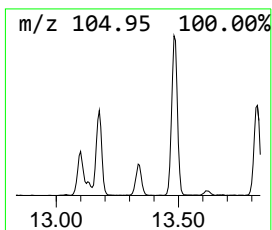
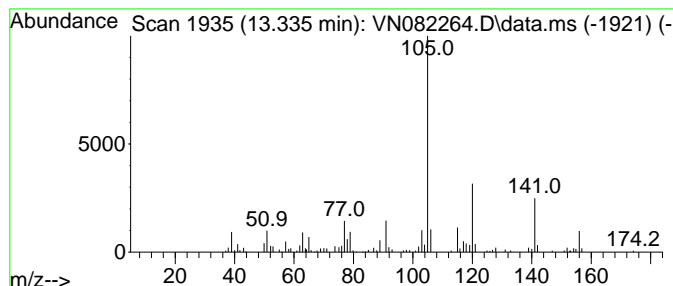
Quant Method : Z:\voasrv\HPCHEM1\MSVOA_N\methods\82N051524W.M
 Quant Title : SW846 8260

TIC Library : C:\Database\NIST20.L
 TIC Integration Parameters: LSCINT.P

 Peak Number 2 Benzene, 1-ethyl-2-methyl- Concentration Rank 7

R.T.	EstConc	Area	Relative to ISTD	R.T.
13.335	11.74 ug/l	283565	1,4-Dichlorobenzene-d4	13.794

Hit#	of 5	Tentative ID	MW	MolForm	CAS#	Qual
1		Benzene, 1-ethyl-2-methyl-	120	C9H12	000611-14-3	90
2		Benzene, 1-ethyl-4-methyl-	120	C9H12	000622-96-8	78
3		Benzene, 1-ethyl-3-methyl-	120	C9H12	000620-14-4	60
4		Benzene, 1,2,3-trimethyl-	120	C9H12	000526-73-8	60
5		Mesitylene	120	C9H12	000108-67-8	53



Data Path : Z:\voasrv\HPCHEM1\MSVOA_N\Data\VN052124\
 Data File : VN082264.D
 Acq On : 22 May 2024 01:33
 Operator : JC\MD
 Sample : P2494-04 40X
 Misc : 5.07g/10mL/100uL/5.00mL/MSVOA_N/MEOH
 ALS Vial : 39 Sample Multiplier: 1

Instrument :
 MSVOA_N
 ClientSampleId :
 4

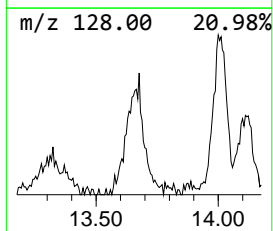
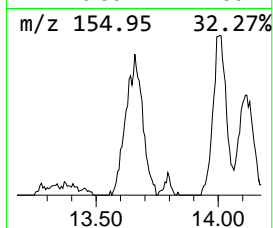
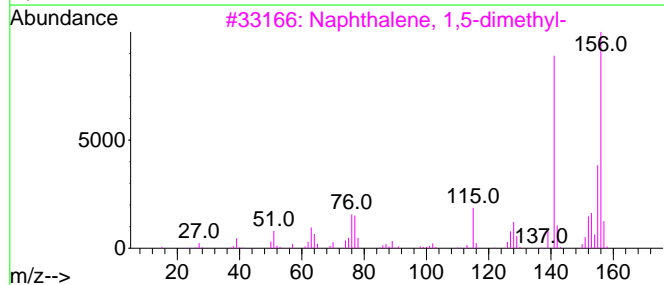
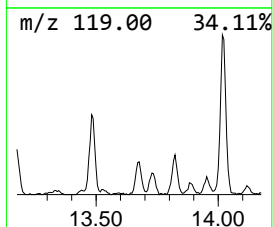
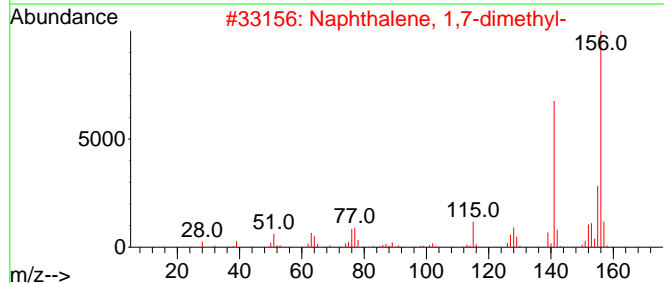
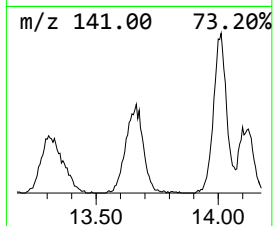
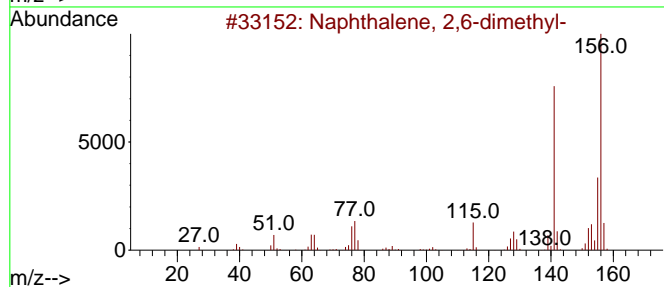
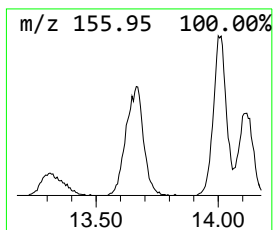
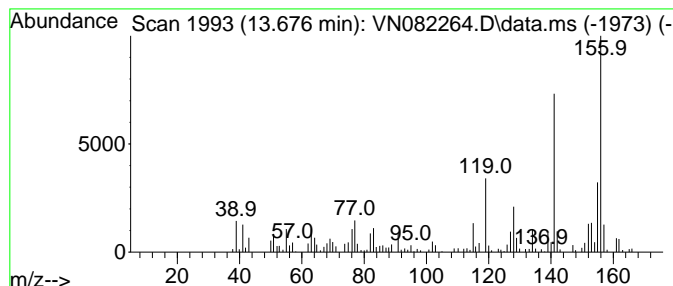
Quant Method : Z:\voasrv\HPCHEM1\MSVOA_N\methods\82N051524W.M
 Quant Title : SW846 8260

TIC Library : C:\Database\NIST20.L
 TIC Integration Parameters: LSCINT.P

 Peak Number 3 Naphthalene, 2,6-dimethyl- Concentration Rank 3

R.T.	EstConc	Area	Relative to ISTD	R.T.
13.676	27.87 ug/l	673190	1,4-Dichlorobenzene-d4	13.794

Hit#	of	5	Tentative ID	MW	MolForm	CAS#	Qual
1			Naphthalene, 2,6-dimethyl-	156	C12H12	000581-42-0	97
2			Naphthalene, 1,7-dimethyl-	156	C12H12	000575-37-1	96
3			Naphthalene, 1,5-dimethyl-	156	C12H12	000571-61-9	96
4			Naphthalene, 1,6-dimethyl-	156	C12H12	000575-43-9	96
5			Naphthalene, 2,3-dimethyl-	156	C12H12	000581-40-8	96



Data Path : Z:\voasrv\HPCHEM1\MSVOA_N\Data\VN052124\
 Data File : VN082264.D
 Acq On : 22 May 2024 01:33
 Operator : JC\MD
 Sample : P2494-04 40X
 Misc : 5.07g/10mL/100uL/5.00mL/MSVOA_N/MEOH
 ALS Vial : 39 Sample Multiplier: 1

Instrument :
 MSVOA_N
 ClientSampleId :
 4

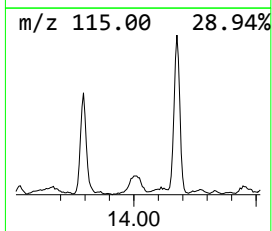
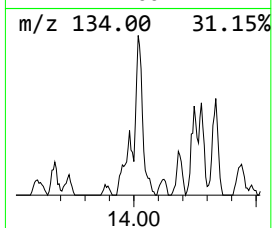
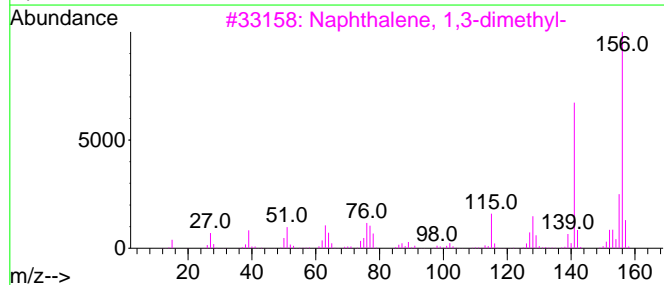
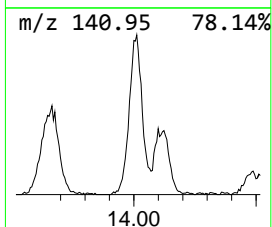
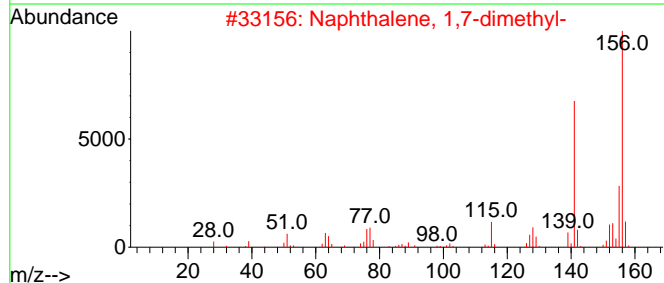
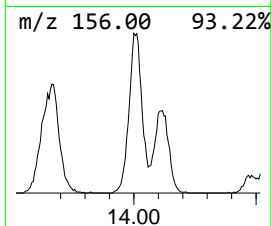
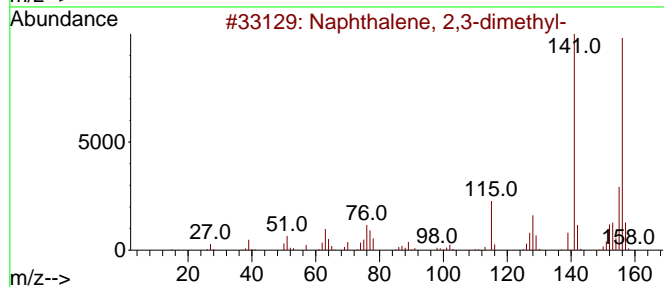
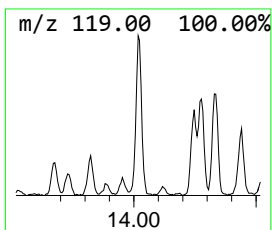
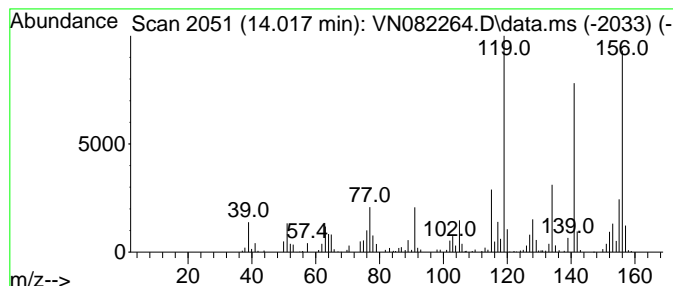
Quant Method : Z:\voasrv\HPCHEM1\MSVOA_N\methods\82N051524W.M
 Quant Title : SW846 8260

TIC Library : C:\Database\NIST20.L
 TIC Integration Parameters: LSCINT.P

 Peak Number 4 Naphthalene, 2,3-dimethyl- Concentration Rank 2

R.T.	EstConc	Area	Relative to ISTD	R.T.
14.017	34.60 ug/l	835687	1,4-Dichlorobenzene-d4	13.794

Hit#	of	5	Tentative ID	MW	MolForm	CAS#	Qual
1			Naphthalene, 2,3-dimethyl-	156	C12H12	000581-40-8	96
2			Naphthalene, 1,7-dimethyl-	156	C12H12	000575-37-1	96
3			Naphthalene, 1,3-dimethyl-	156	C12H12	000575-41-7	96
4			Naphthalene, 1,2-dimethyl-	156	C12H12	000573-98-8	96
5			Naphthalene, 1,5-dimethyl-	156	C12H12	000571-61-9	95



Data Path : Z:\voasrv\HPCHEM1\MSVOA_N\Data\VN052124\
 Data File : VN082264.D
 Acq On : 22 May 2024 01:33
 Operator : JC\MD
 Sample : P2494-04 40X
 Misc : 5.07g/10mL/100uL/5.00mL/MSVOA_N/MEOH
 ALS Vial : 39 Sample Multiplier: 1

Instrument :
 MSVOA_N
 ClientSampleId :
 4

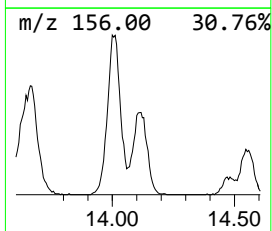
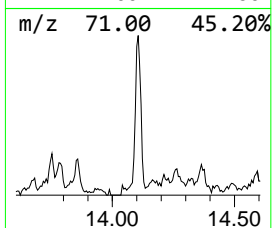
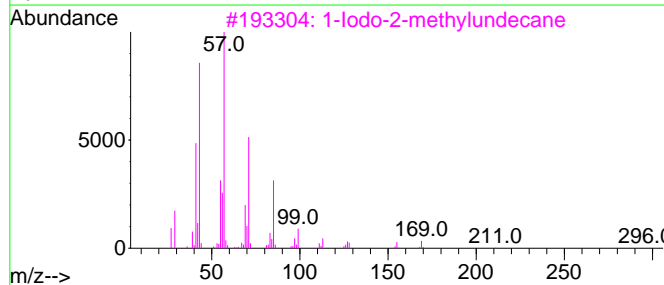
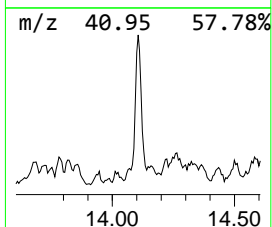
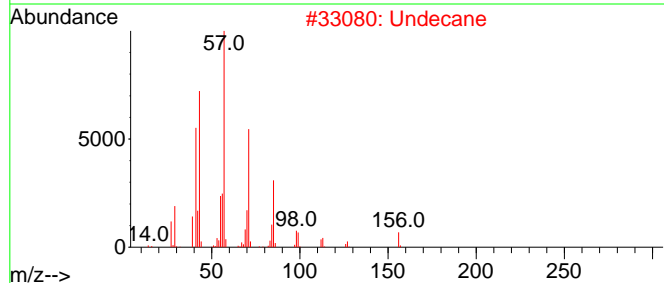
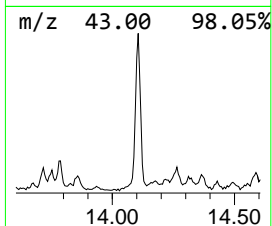
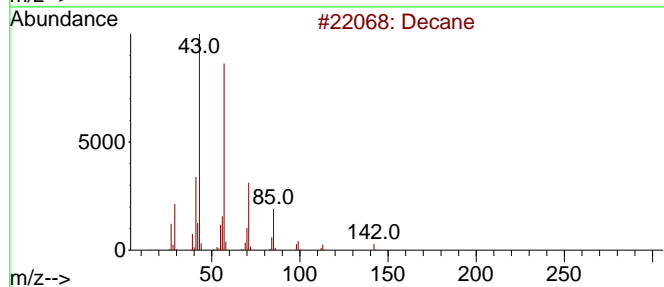
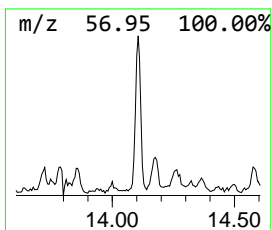
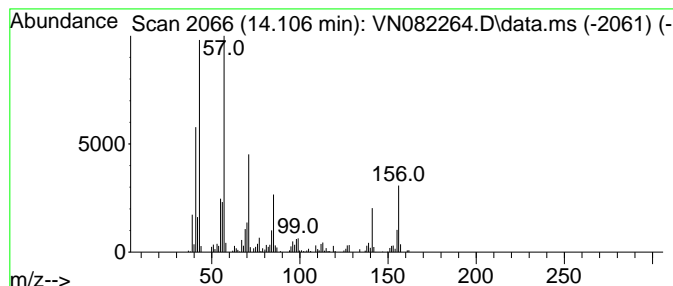
Quant Method : Z:\voasrv\HPCHEM1\MSVOA_N\methods\82N051524W.M
 Quant Title : SW846 8260

TIC Library : C:\Database\NIST20.L
 TIC Integration Parameters: LSCINT.P

 Peak Number 5 Decane Concentration Rank 6

R.T.	EstConc	Area	Relative to ISTD	R.T.
14.105	16.24 ug/l	392246	1,4-Dichlorobenzene-d4	13.794

Hit#	of	5	Tentative ID	MW	MolForm	CAS#	Qual
1			Decane	142	C10H22	000124-18-5	83
2			Undecane	156	C11H24	001120-21-4	52
3			1-Iodo-2-methylundecane	296	C12H25I	073105-67-6	49
4			Tridecane	184	C13H28	000629-50-5	49
5			Borane, diethyl(decyloxy)-	226	C14H31BO	1000152-34-3	47



Data Path : Z:\voasrv\HPCHEM1\MSVOA_N\Data\VN052124\
 Data File : VN082264.D
 Acq On : 22 May 2024 01:33
 Operator : JC\MD
 Sample : P2494-04 40X
 Misc : 5.07g/10mL/100uL/5.00mL/MSVOA_N/MEOH
 ALS Vial : 39 Sample Multiplier: 1

Instrument :
 MSVOA_N
 ClientSampleId :
 4

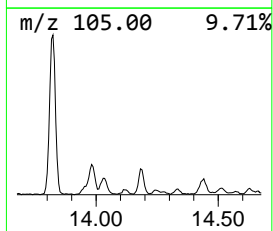
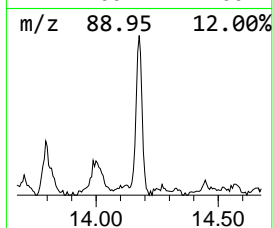
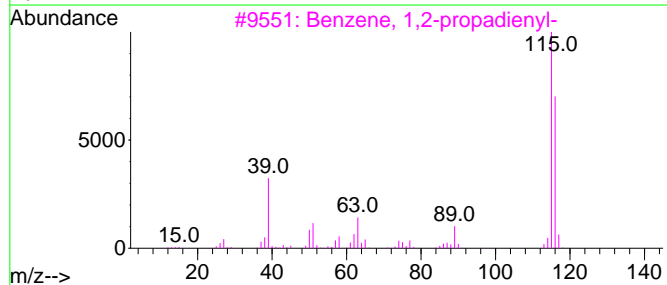
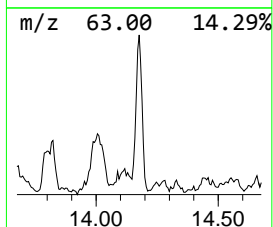
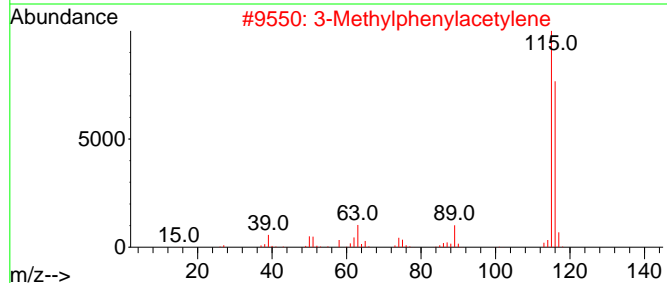
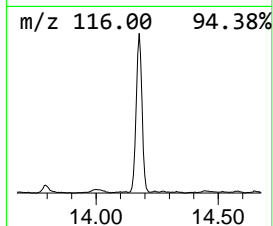
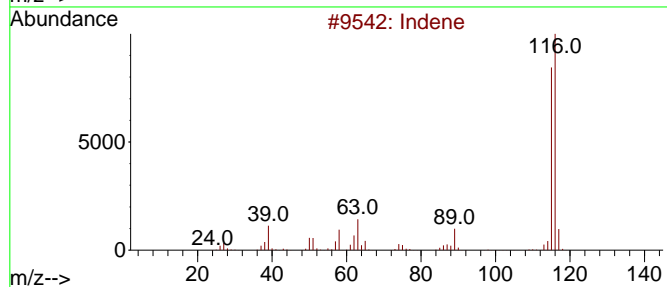
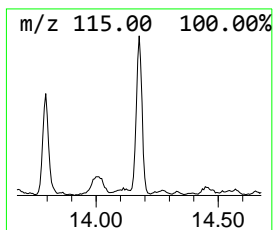
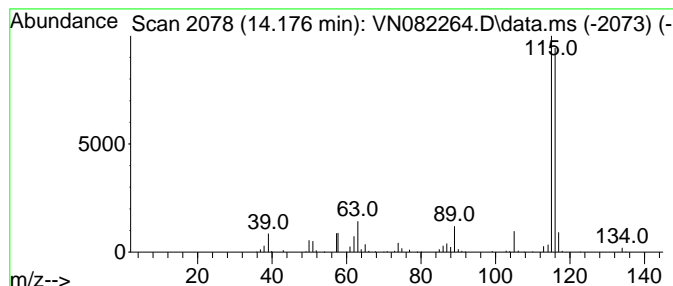
Quant Method : Z:\voasrv\HPCHEM1\MSVOA_N\methods\82N051524W.M
 Quant Title : SW846 8260

TIC Library : C:\Database\NIST0.L
 TIC Integration Parameters: LSCINT.P

 Peak Number 6 Indene Concentration Rank 5

R.T.	EstConc	Area	Relative to ISTD	R.T.
14.176	18.64 ug/l	450107	1,4-Dichlorobenzene-d4	13.794

Hit#	of	Tentative ID	MW	MolForm	CAS#	Qual
1	5	Indene	116	C9H8	000095-13-6	96
2		3-Methylphenylacetylene	116	C9H8	000766-82-5	95
3		Benzene, 1,2-propadienyl-	116	C9H8	002327-99-3	90
4		Benzene, 1-propynyl-	116	C9H8	000673-32-5	90
5		Benzene, 1-ethynyl-4-methyl-	116	C9H8	000766-97-2	87



Data Path : Z:\voasrv\HPCHEM1\MSVOA_N\Data\VN052124\
 Data File : VN082264.D
 Acq On : 22 May 2024 01:33
 Operator : JC\MD
 Sample : P2494-04 40X
 Misc : 5.07g/10mL/100uL/5.00mL/MSVOA_N/MEOH
 ALS Vial : 39 Sample Multiplier: 1

Instrument :
 MSVOA_N
 ClientSampleId :
 4

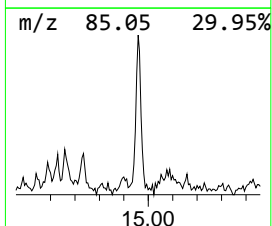
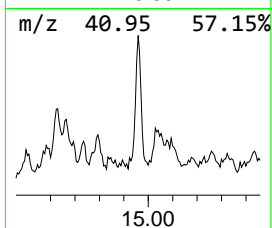
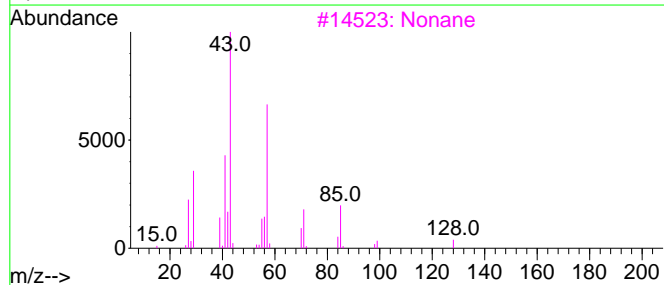
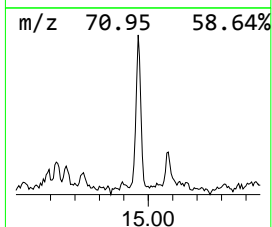
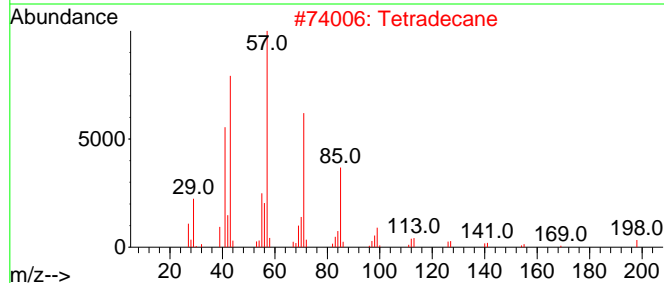
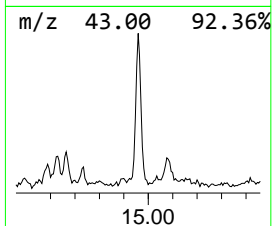
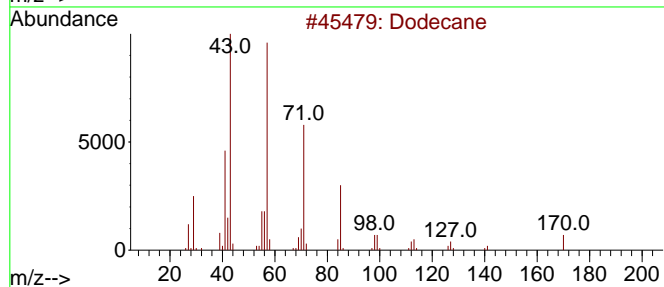
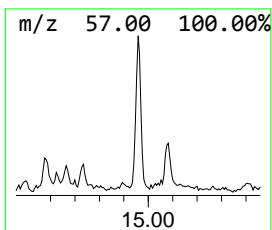
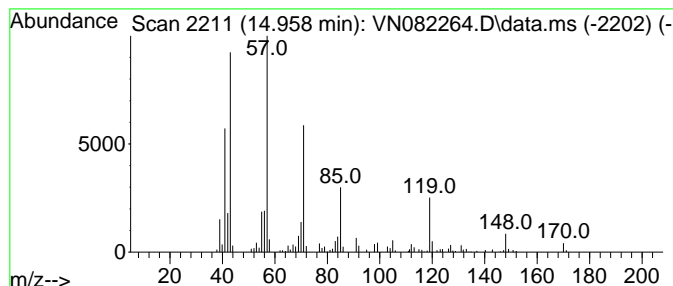
Quant Method : Z:\voasrv\HPCHEM1\MSVOA_N\methods\82N051524W.M
 Quant Title : SW846 8260

TIC Library : C:\Database\NIST0.L
 TIC Integration Parameters: LSCINT.P

 Peak Number 7 Dodecane Concentration Rank 8

R.T.	EstConc	Area	Relative to ISTD	R.T.
14.958	10.22 ug/l	246822	1,4-Dichlorobenzene-d4	13.794

Hit#	of 5	Tentative ID	MW	MolForm	CAS#	Qual
1		Dodecane	170	C12H26	000112-40-3	68
2		Tetradecane	198	C14H30	000629-59-4	59
3		Nonane	128	C9H20	000111-84-2	49
4		Dodecane, 2,6,10-trimethyl-	212	C15H32	003891-98-3	47
5		Decane, 2,3,6-trimethyl-	184	C13H28	062238-12-4	47



Data Path : Z:\voasrv\HPCHEM1\MSVOA_N\Data\VN052124\
 Data File : VN082264.D
 Acq On : 22 May 2024 01:33
 Operator : JC\MD
 Sample : P2494-04 40X
 Misc : 5.07g/10mL/100uL/5.00mL/MSVOA_N/MEOH
 ALS Vial : 39 Sample Multiplier: 1

Instrument :
 MSVOA_N
 ClientSampleId :
 4

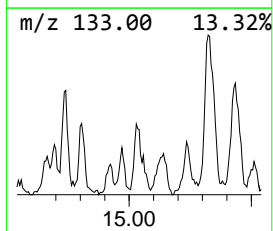
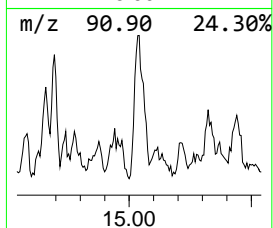
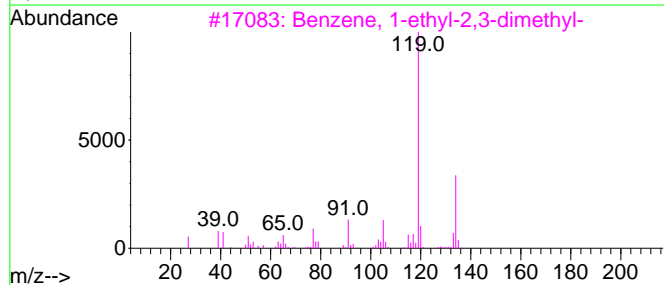
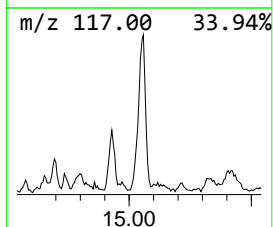
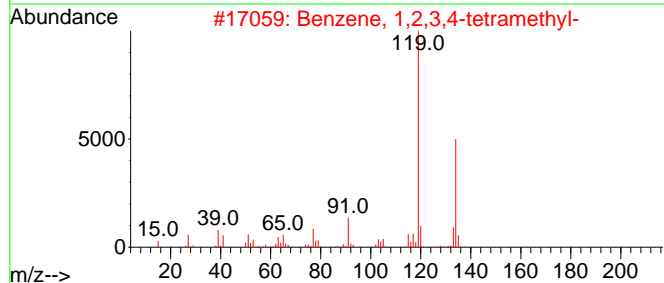
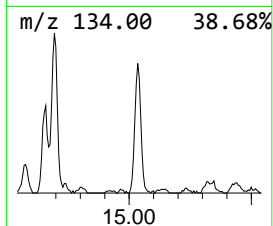
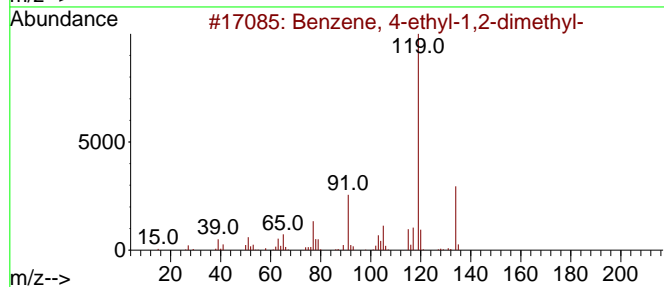
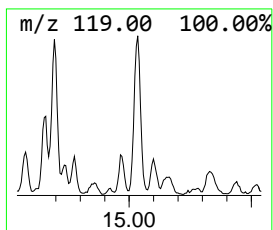
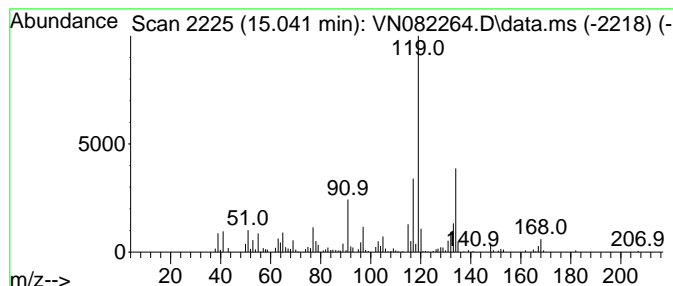
Quant Method : Z:\voasrv\HPCHEM1\MSVOA_N\methods\82N051524W.M
 Quant Title : SW846 8260

TIC Library : C:\Database\NIST20.L
 TIC Integration Parameters: LSCINT.P

 Peak Number 8 Benzene, 4-ethyl-1,2-dimethyl- Concentration Rank 4

R.T.	EstConc	Area	Relative to ISTD	R.T.
15.041	18.95 ug/l	457588	1,4-Dichlorobenzene-d4	13.794

Hit#	of 5	Tentative ID	MW	MolForm	CAS#	Qual
1		Benzene, 4-ethyl-1,2-dimethyl-	134	C10H14	000934-80-5	92
2		Benzene, 1,2,3,4-tetramethyl-	134	C10H14	000488-23-3	76
3		Benzene, 1-ethyl-2,3-dimethyl-	134	C10H14	000933-98-2	76
4		Benzene, 1,2,3,5-tetramethyl-	134	C10H14	000527-53-7	76
5		o-Cymene	134	C10H14	000527-84-4	76



Data Path : Z:\voasrv\HPCHEM1\MSVOA_N\Data\VN052124\
 Data File : VN082264.D
 Acq On : 22 May 2024 01:33
 Operator : JC\MD
 Sample : P2494-04 40X
 Misc : 5.07g/10mL/100uL/5.00mL/MSVOA_N/MEOH
 ALS Vial : 39 Sample Multiplier: 1

Instrument :
 MSVOA_N
 ClientSampleId :
 4

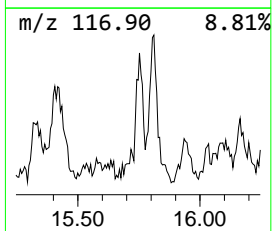
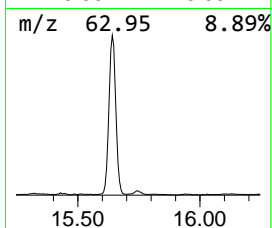
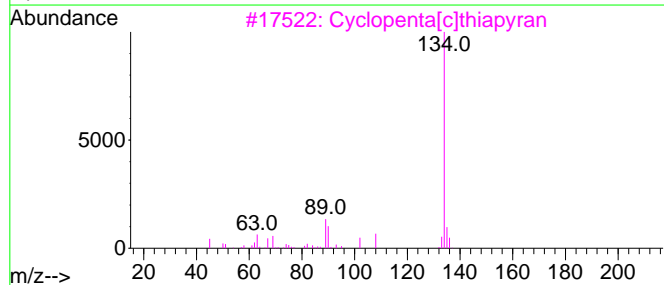
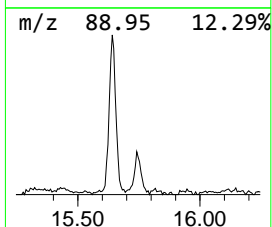
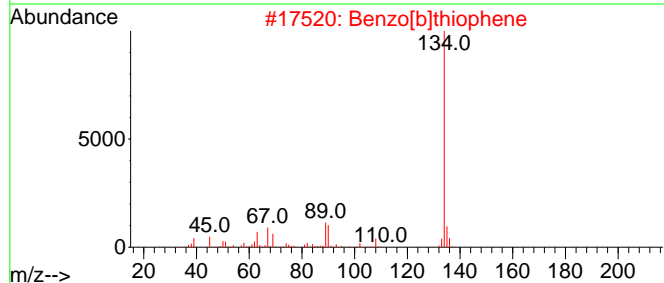
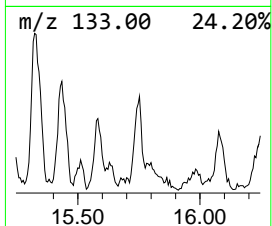
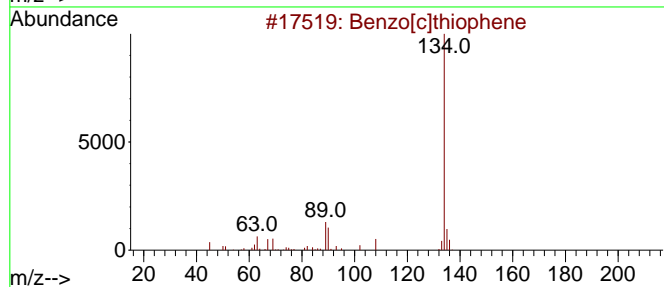
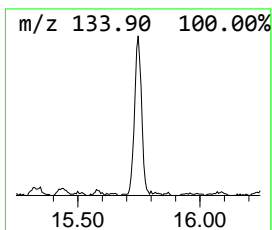
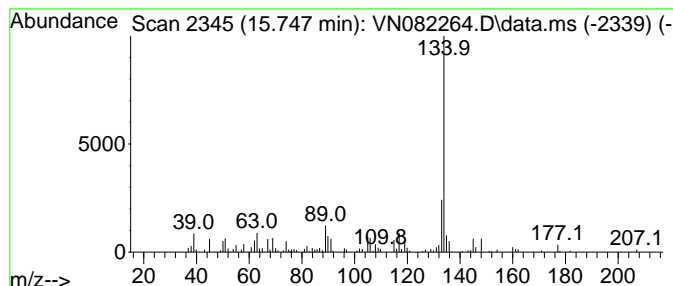
Quant Method : Z:\voasrv\HPCHEM1\MSVOA_N\methods\82N051524W.M
 Quant Title : SW846 8260

TIC Library : C:\Database\NIST20.L
 TIC Integration Parameters: LSCINT.P

 Peak Number 9 Benzo[c]thiophene Concentration Rank 10

R.T.	EstConc	Area	Relative to ISTD	R.T.
15.747	6.29 ug/l	152036	1,4-Dichlorobenzene-d4	13.794

Hit#	of	5	Tentative ID	MW	MolForm	CAS#	Qual
1			Benzo[c]thiophene	134	C8H6S	000270-82-6	70
2			Benzo[b]thiophene	134	C8H6S	000095-15-8	70
3			Cyclopenta[c]thiapyran	134	C8H6S	000270-63-3	70
4			Phenol, 4-(2-propenyl)-, acetate	176	C11H12O2	061499-22-7	50
5			[1]Benzothieno[2',3':3,4]cyclobu...	246	C13H10O3S	034002-19-2	50



Data Path : Z:\voasrv\HPCHEM1\MSVOA_N\Data\VN052124\
 Data File : VN082264.D
 Acq On : 22 May 2024 01:33
 Operator : JC\MD
 Sample : P2494-04 40X
 Misc : 5.07g/10mL/100uL/5.00mL/MSVOA_N/MEOH
 ALS Vial : 39 Sample Multiplier: 1

Instrument :
 MSVOA_N
 ClientSampleId :
 4

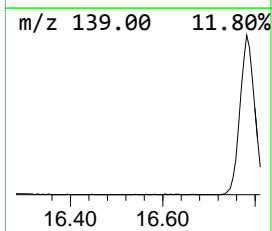
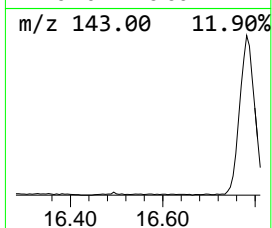
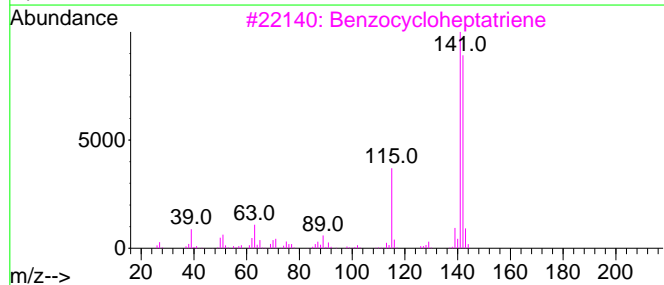
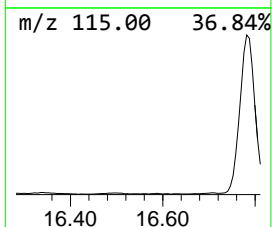
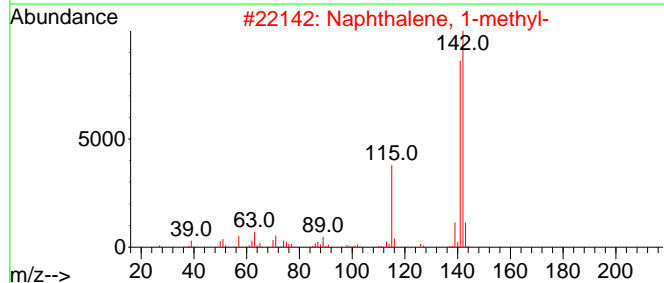
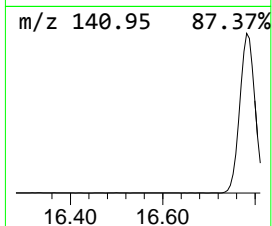
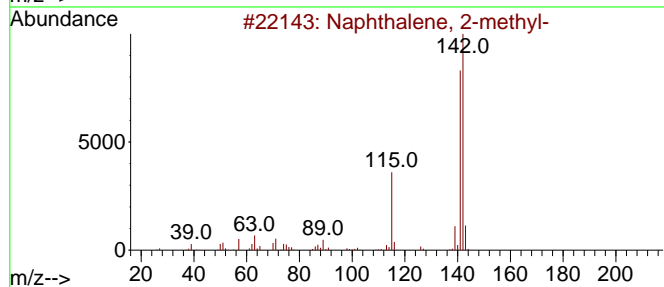
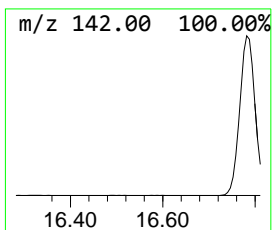
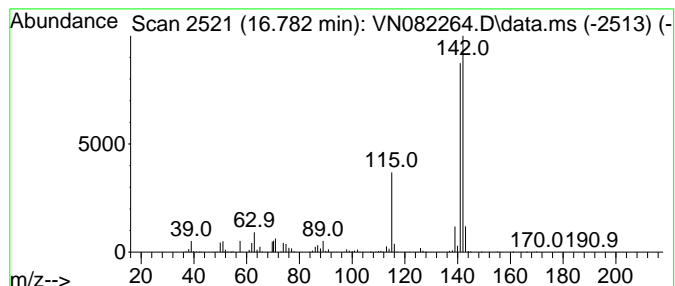
Quant Method : Z:\voasrv\HPCHEM1\MSVOA_N\methods\82N051524W.M
 Quant Title : SW846 8260

TIC Library : C:\Database\NIST20.L
 TIC Integration Parameters: LSCINT.P

 Peak Number 10 Naphthalene, 2-methyl- Concentration Rank 1

R.T.	EstConc	Area	Relative to ISTD	R.T.
16.782	105.88 ug/l	2557410	1,4-Dichlorobenzene-d4	13.794

Hit#	of 5	Tentative ID	MW	MolForm	CAS#	Qual
1		Naphthalene, 2-methyl-	142	C11H10	000091-57-6	96
2		Naphthalene, 1-methyl-	142	C11H10	000090-12-0	96
3		Benzocycloheptatriene	142	C11H10	000264-09-5	91
4		1,4-Methanonaphthalene, 1,4-dihy...	142	C11H10	004453-90-1	90
5		1H-Indene, 1-ethylidene-	142	C11H10	002471-83-2	72



Data Path : Z:\voasrv\HPCHEM1\MSVOA_N\Data\VN052124\
Data File : VN082264.D
Acq On : 22 May 2024 01:33
Operator : JC\MD
Sample : P2494-04 40X
Misc : 5.07g/10mL/100uL/5.00mL/MSVOA_N/MEOH
ALS Vial : 39 Sample Multiplier: 1

Instrument :
MSVOA_N
ClientSampleId :
4

Quant Method : Z:\voasrv\HPCHEM1\MSVOA_N\methods\82N051524W.M
Quant Title : SW846 8260

TIC Library : C:\Database\NIST20.L
TIC Integration Parameters: LSCINT.P

TIC Top Hit name	RT	EstConc	Units	Response	--Internal Standard--			
					#	RT	Resp	Conc
Benzene, 1-ethy...	13.100	9.2	ug/l	221191	4	13.794	1207660	50.0
Benzene, 1-ethy...	13.335	11.7	ug/l	283565	4	13.794	1207660	50.0
Naphthalene, 2,...	13.676	27.9	ug/l	673190	4	13.794	1207660	50.0
Naphthalene, 2,...	14.017	34.6	ug/l	835687	4	13.794	1207660	50.0
Decane	14.105	16.2	ug/l	392246	4	13.794	1207660	50.0
Indene	14.176	18.6	ug/l	450107	4	13.794	1207660	50.0
Dodecane	14.958	10.2	ug/l	246822	4	13.794	1207660	50.0
Benzene, 4-ethy...	15.041	18.9	ug/l	457588	4	13.794	1207660	50.0
Benzo[c]thiophene	15.747	6.3	ug/l	152036	4	13.794	1207660	50.0
Naphthalene, 2-...	16.782	105.9	ug/l	2557410	4	13.794	1207660	50.0