

Data Path : Z:\VOASRV\HPCHEM1\MSVOA_N\DATA\VN052419\
 Data File : VN055783.D
 Acq On : 24 May 2019 9:52
 Operator : JC/SP
 Sample : VN0524WBL01
 Misc : 5.00mL/MSVOA_N/WATER
 ALS Vial : 4 Sample Multiplier: 1

Instrument :
 MSVOA_N
 ClientSampleId :
 VN0524WBL01

Quant Time: May 24 12:59:38 2019
 Quant Method : Z:\VOASRV\HPCHEM1\MSVOA_N\METHODS\624N052219W.M
 Quant Title : METHOD 624 VOLATILE ORGANIC ANALYSIS
 QLast Update : Thu May 23 05:54:54 2019
 Response via : Initial Calibration

Internal Standards	R.T.	QIon	Response	Conc	Units	Dev(Min)
1) Bromochloromethane	7.19	128	60767	30.00	ug/l	0.00
28) 1,4-Difluorobenzene	8.58	114	321898	30.00	ug/l	0.00
57) Chlorobenzene-d5	11.41	117	255104	30.00	ug/l	0.00

System Monitoring Compounds

27) 1,2-Dichloroethane-d4	8.03	65	113557	28.59	ug/l	0.00
Spiked Amount	30.000	Range	50 - 169	Recovery	=	95.30%
60) 4-Bromofluorobenzene	12.40	95	93880	23.66	ug/l	0.00
Spiked Amount	30.000	Range	56 - 143	Recovery	=	78.87%
63) Toluene-d8	10.09	98	370452	31.78	ug/l	0.00
Spiked Amount	30.000	Range	66 - 137	Recovery	=	105.93%

Target Compounds

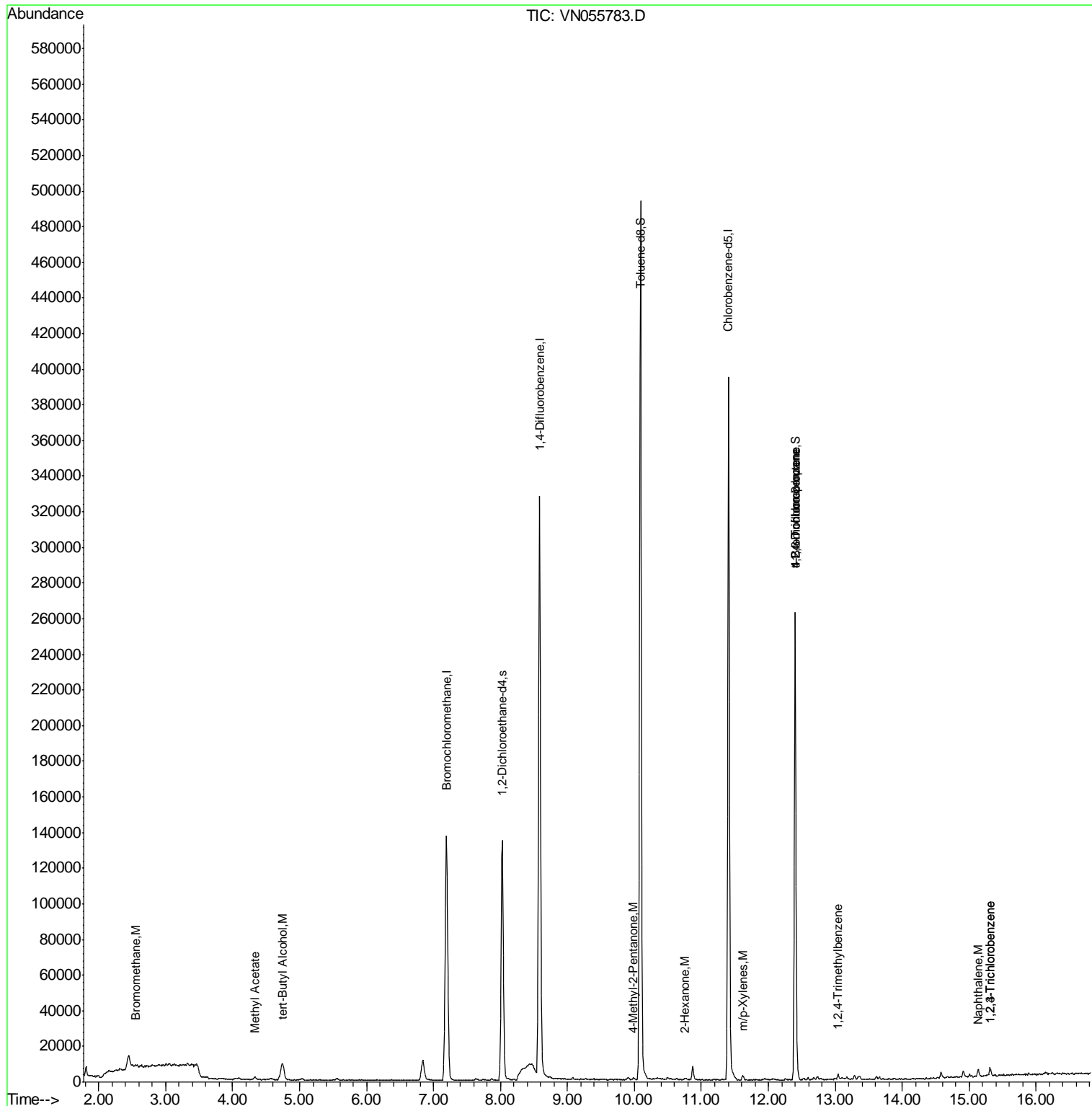
					Qvalue	
5) Bromomethane	2.57	94	460	0.203	ug/l #	25
12) Methyl Acetate	4.32	43	1024	0.261	ug/l #	51
23) tert-Butyl Alcohol	4.74	59	9046	11.517	ug/l #	100
58) 4-Methyl-2-Pentanone	9.99	43	1784	0.422	ug/l #	52
59) 2-Hexanone	10.76	43	1575	0.522	ug/l #	60
67) m/p-Xylenes	11.62	106	1254	0.220	ug/l	94
72) 1,2,3-Trichloropropane	12.40	75	42951	10.999	ug/l	1
77) t-1,4-Dichloro-2-butene	12.40	75	42951	27.691	ug/l #	17
80) 1,2,4-Trimethylbenzene	13.04	105	2722	0.225	ug/l	88
89) 1,2,4-Trichlorobenzene	15.31	180	2230	0.671	ug/l	98
91) Naphthalene	15.13	128	4846	0.534	ug/l #	93
92) 1,2,3-Trichlorobenzene	15.31	180	2230	0.642	ug/l	99

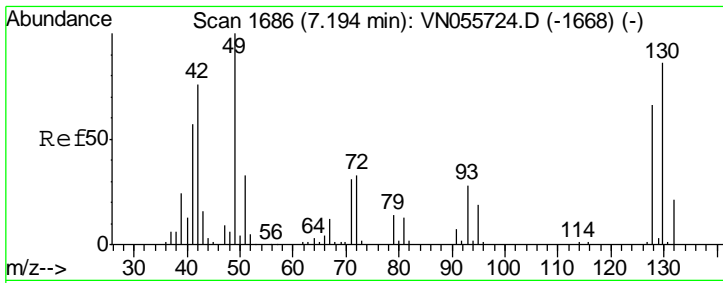
(#) = qualifier out of range (m) = manual integration (+) = signals summed

Data Path : Z:\VOASRV\HPCHEM1\MSVOA_N\DATA\VN052419\
 Data File : VN055783.D
 Acq On : 24 May 2019 9:52
 Operator : JC/SP
 Sample : VN0524WBL01
 Misc : 5.00mL/MSVOA_N/WATER
 ALS Vial : 4 Sample Multiplier: 1

Instrument :
 MSVOA_N
 ClientSampleId :
 VN0524WBL01

Quant Time: May 24 12:59:38 2019
 Quant Method : Z:\VOASRV\HPCHEM1\MSVOA_N\METHODS\624N052219W.M
 Quant Title : METHOD 624 VOLATILE ORGANIC ANALYSIS
 QLast Update : Thu May 23 05:54:54 2019
 Response via : Initial Calibration

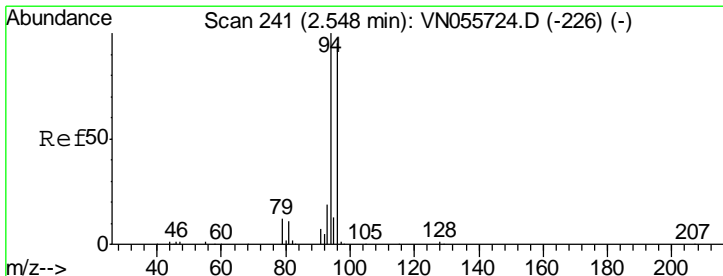
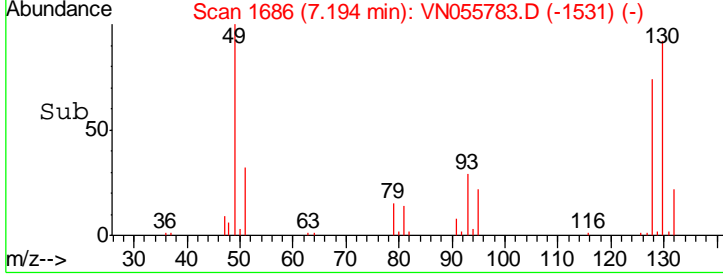
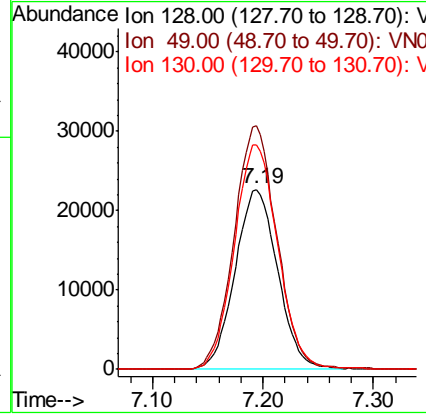
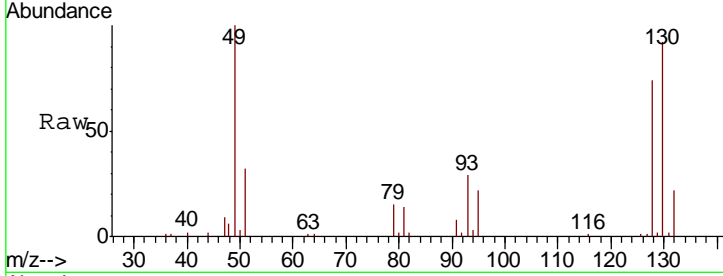




#1
 Bromochloromethane
 Concen: 30.000 ug/l
 RT: 7.19 min Scan# 1686
 Delta R.T. -0.00 min
 Lab File: VN055783.D
 Acq: 24 May 2019 9:52

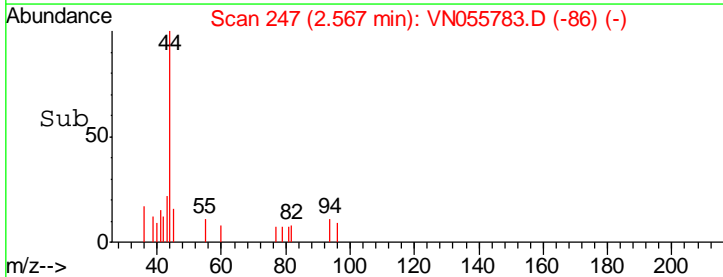
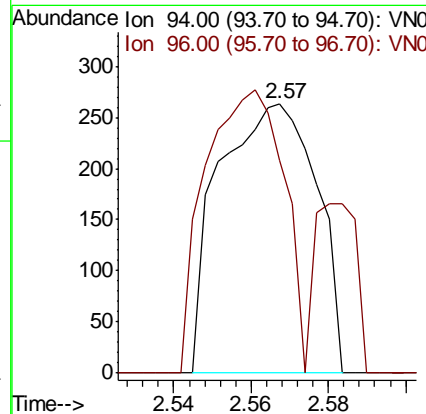
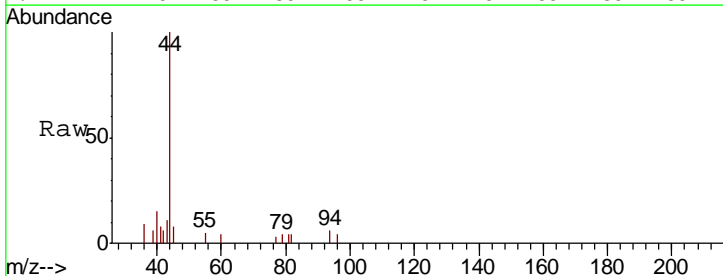
Instrument :
 MSVOA_N
 ClientSampled :
 VN0524WBL01

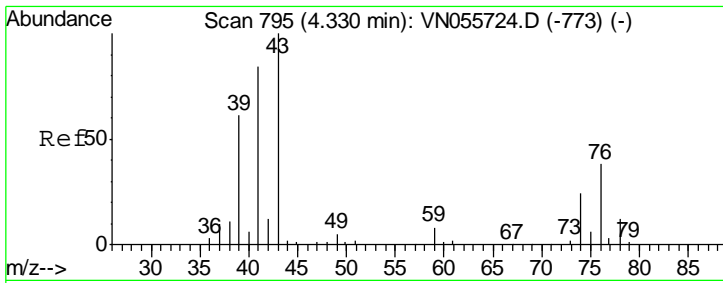
Tgt Ion	Resp	Lower	Upper
128	60767		
49	136.0	0.0	383.2
130	127.6	0.0	326.3



#5
 Bromomethane
 Concen: 0.203 ug/l
 RT: 2.57 min Scan# 247
 Delta R.T. 0.02 min
 Lab File: VN055783.D
 Acq: 24 May 2019 9:52

Tgt Ion	Resp	Lower	Upper
94	460		
94	100		
96	21.6	75.8	113.8#

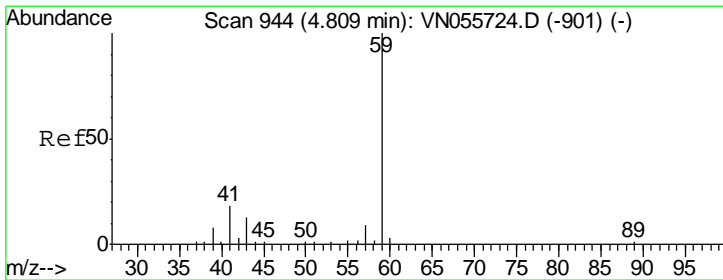
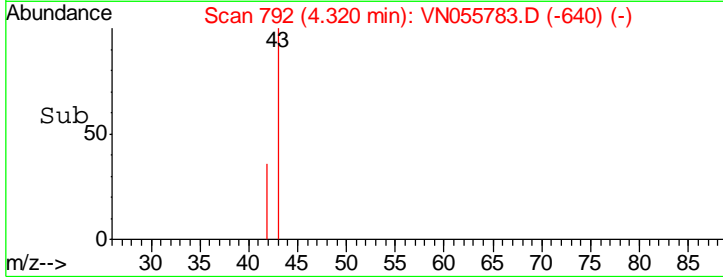
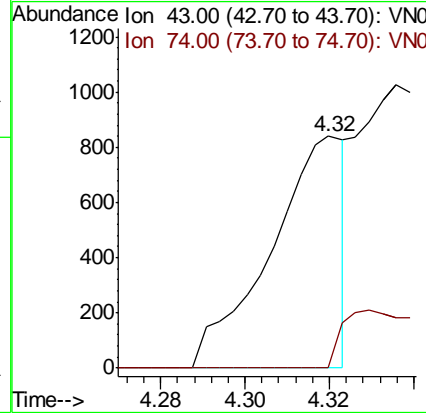
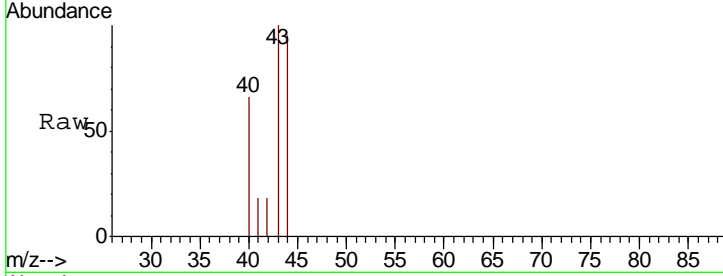




#12
 Methyl Acetate
 Concen: 0.261 ug/l
 RT: 4.32 min Scan# 792
 Delta R.T. -0.01 min
 Lab File: VN055783.D
 Acq: 24 May 2019 9:52

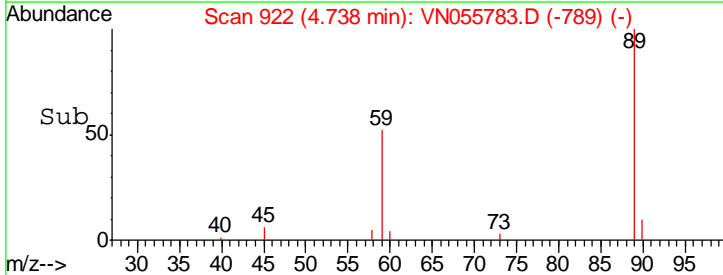
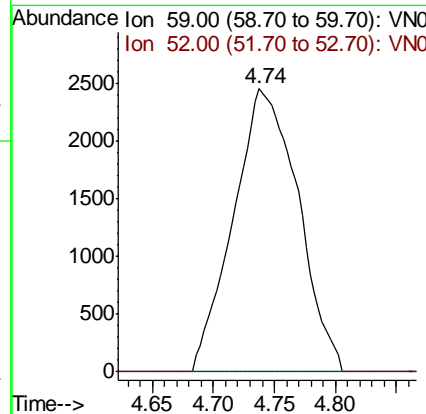
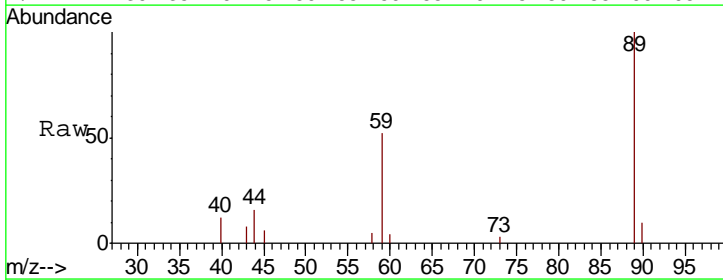
Instrument :
 MSVOA_N
 ClientSampled :
 VN0524WBL01

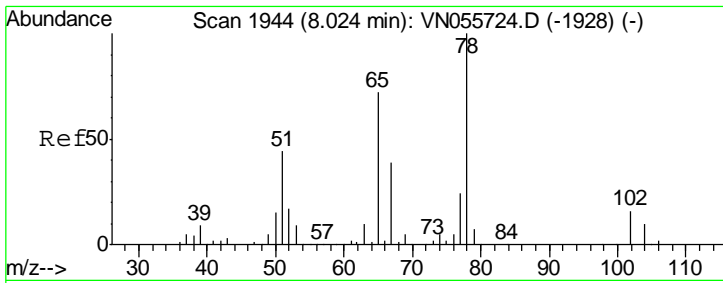
Tgt Ion: 43 Resp: 1024
 Ion Ratio Lower Upper
 43 100
 74 0.0 19.2 28.8#



#23
 tert-Butyl Alcohol
 Concen: 11.517 ug/l
 RT: 4.74 min Scan# 922
 Delta R.T. -0.07 min
 Lab File: VN055783.D
 Acq: 24 May 2019 9:52

Tgt Ion: 59 Resp: 9046
 Ion Ratio Lower Upper
 59 100
 52 0.0 0.0 0.0

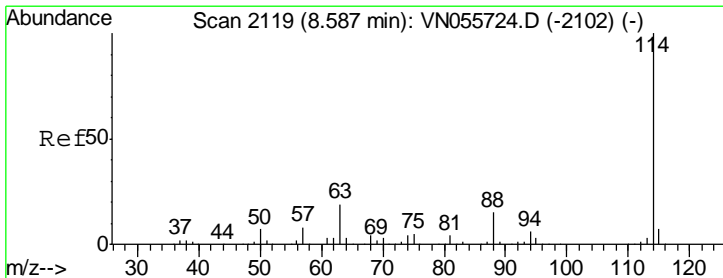
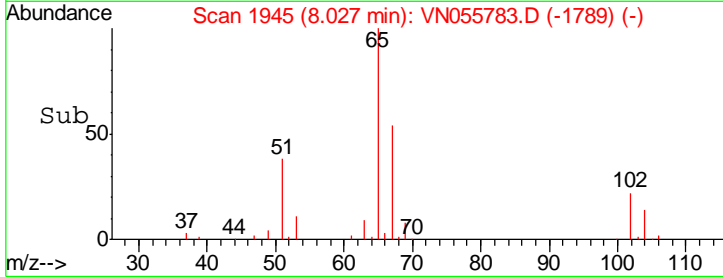
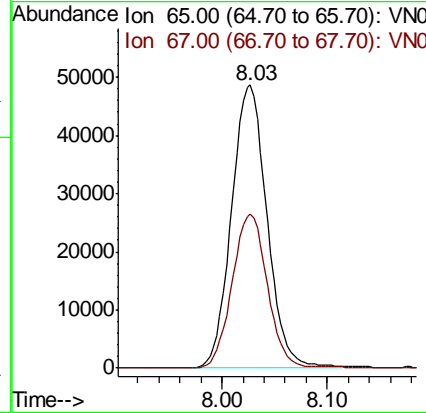
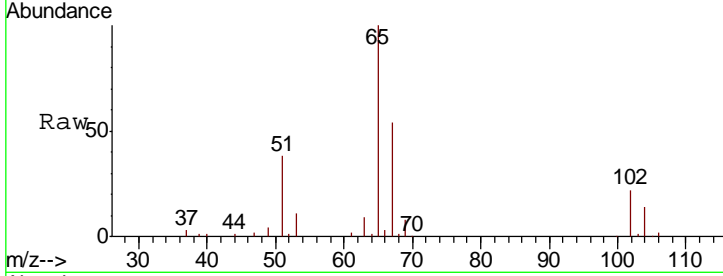




#27
 1,2-Dichloroethane-d4
 Concen: 28.590 ug/l
 RT: 8.03 min Scan# 1945
 Delta R.T. 0.00 min
 Lab File: VN055783.D
 Acq: 24 May 2019 9:52

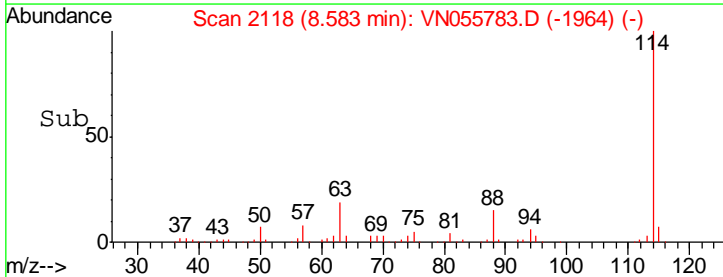
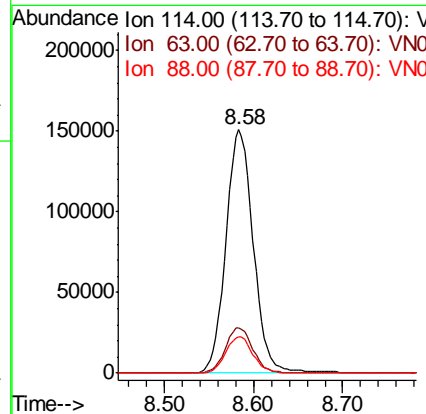
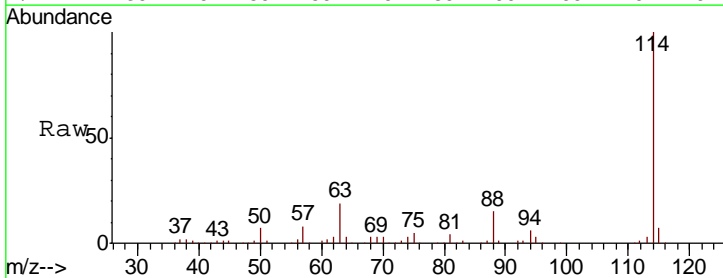
Instrument :
 MSVOA_N
 ClientSampleID :
 VN0524WBL01

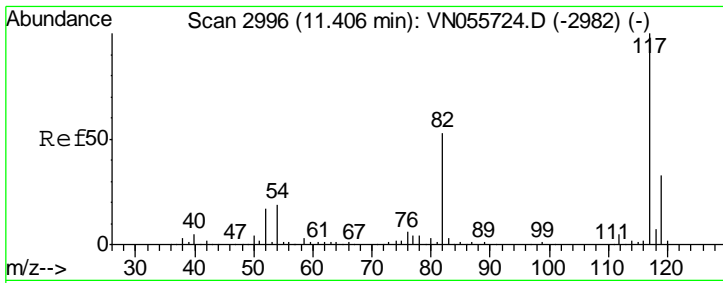
Tgt Ion: 65 Resp: 113557
 Ion Ratio Lower Upper
 65 100
 67 54.2 43.5 65.3



#28
 1,4-Difluorobenzene
 Concen: 30.000 ug/l
 RT: 8.58 min Scan# 2118
 Delta R.T. -0.00 min
 Lab File: VN055783.D
 Acq: 24 May 2019 9:52

Tgt Ion: 114 Resp: 321898
 Ion Ratio Lower Upper
 114 100
 63 18.5 15.6 23.4
 88 14.7 12.3 18.5



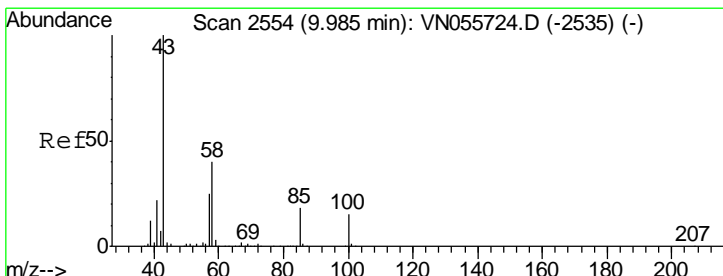
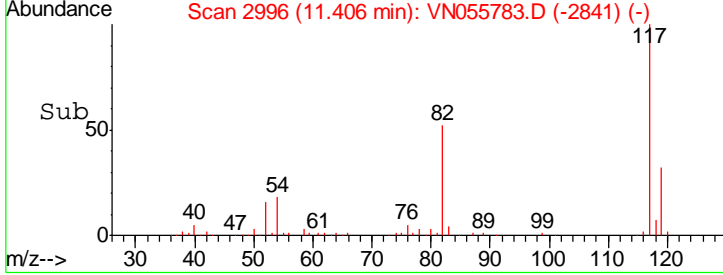
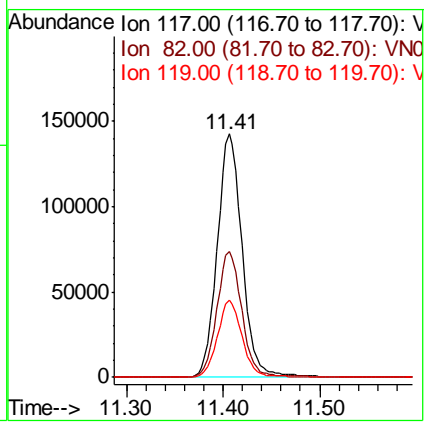
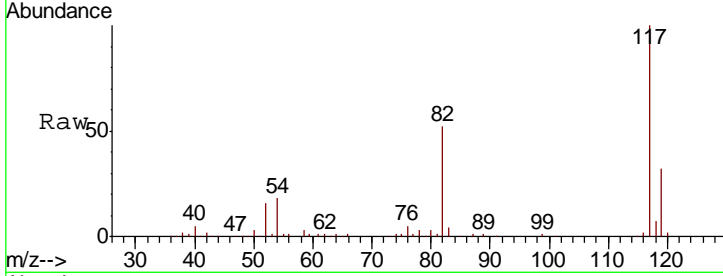


#57
 Chlorobenzene-d5
 Concen: 30.000 ug/l
 RT: 11.41 min Scan# 2996
 Delta R.T. -0.00 min
 Lab File: VN055783.D
 Acq: 24 May 2019 9:52

Instrument : MSVOA_N
 ClientSampled : VN0524WBL01

Tgt Ion: 117 Resp: 255104

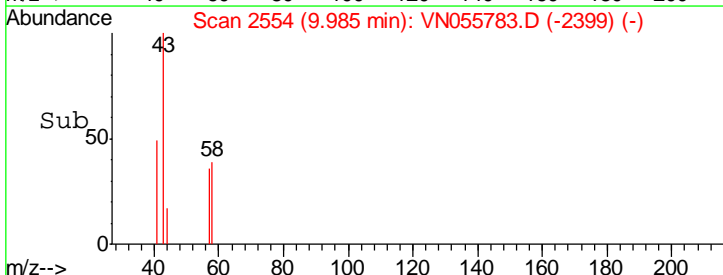
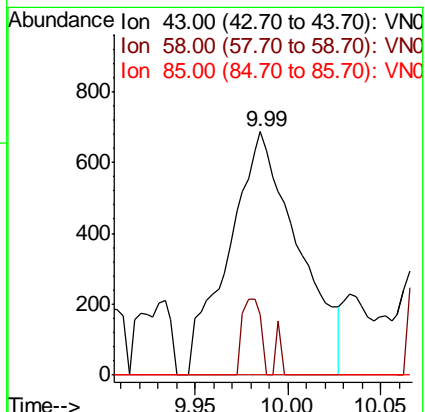
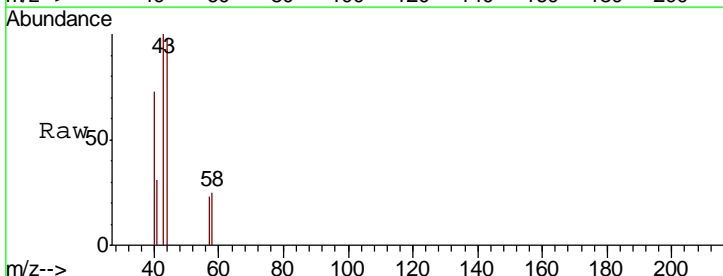
Ion	Ratio	Lower	Upper
117	100		
82	51.8	42.6	64.0
119	31.5	25.9	38.9

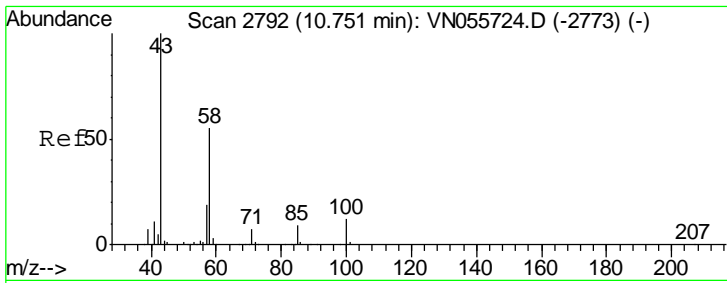


#58
 4-Methyl-2-Pentanone
 Concen: 0.422 ug/l
 RT: 9.99 min Scan# 2554
 Delta R.T. -0.00 min
 Lab File: VN055783.D
 Acq: 24 May 2019 9:52

Tgt Ion: 43 Resp: 1784

Ion	Ratio	Lower	Upper
43	100		
58	8.4	31.7	47.5#
85	0.0	14.5	21.7#

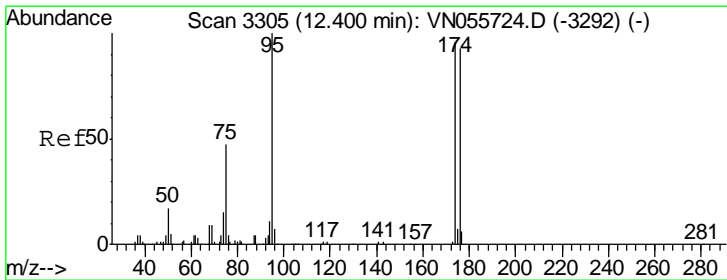
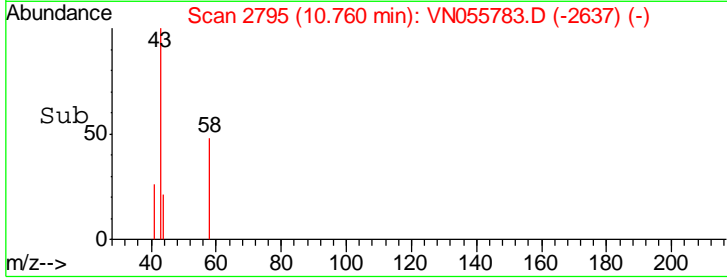
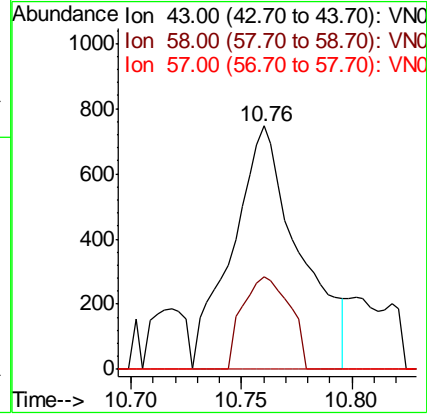
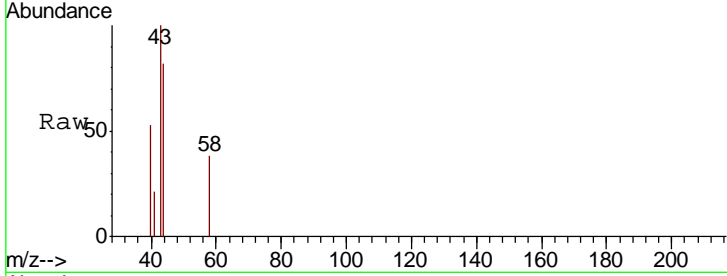




#59
 2-Hexanone
 Concen: 0.522 ug/l
 RT: 10.76 min Scan# 2795
 Delta R.T. 0.01 min
 Lab File: VN055783.D
 Acq: 24 May 2019 9:52

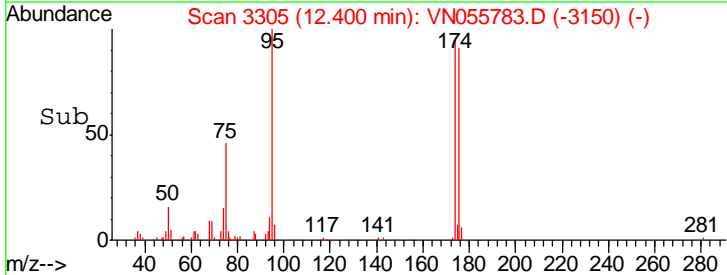
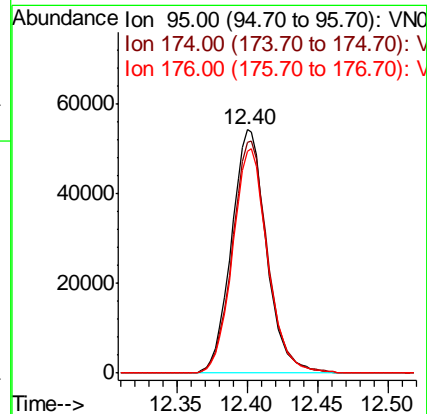
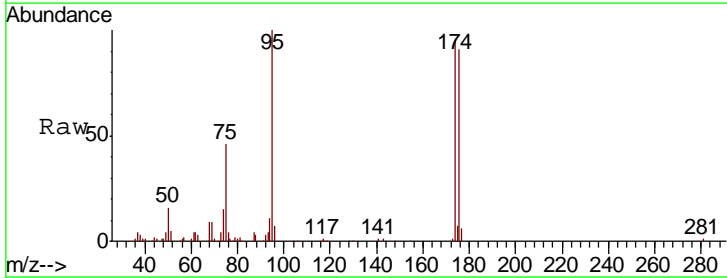
Instrument :
 MSVOA_N
 ClientSampled :
 VN0524WBL01

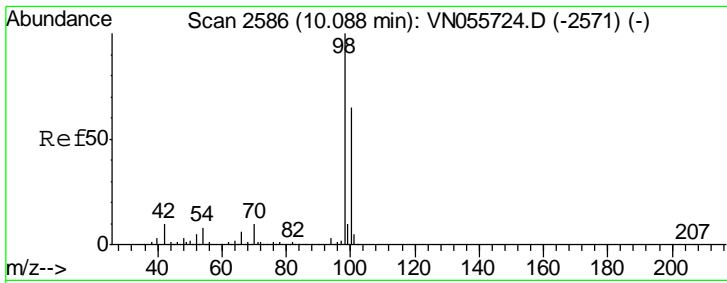
Tgt Ion	Resp	Lower	Upper
43	1575		
58	27.0	44.8	67.2#
57	0.0	15.3	22.9#



#60
 4-Bromofluorobenzene
 Concen: 23.657 ug/l
 RT: 12.40 min Scan# 3305
 Delta R.T. -0.00 min
 Lab File: VN055783.D
 Acq: 24 May 2019 9:52

Tgt Ion	Resp	Lower	Upper
95	93880		
174	96.3	75.7	113.5
176	92.5	74.1	111.1

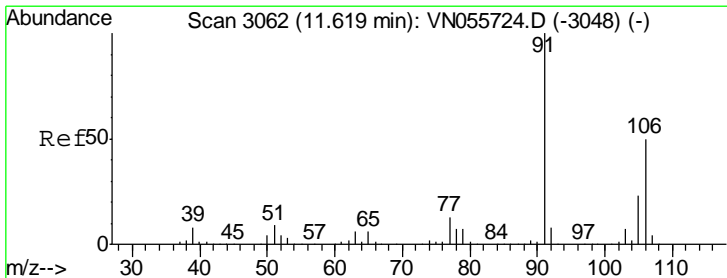
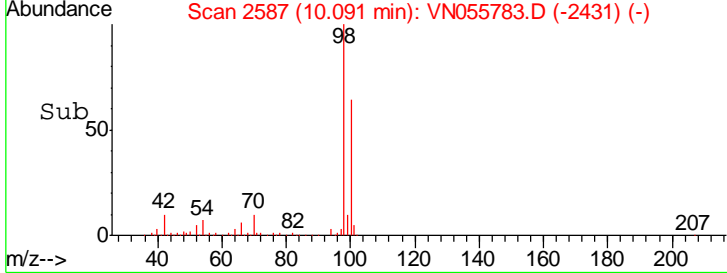
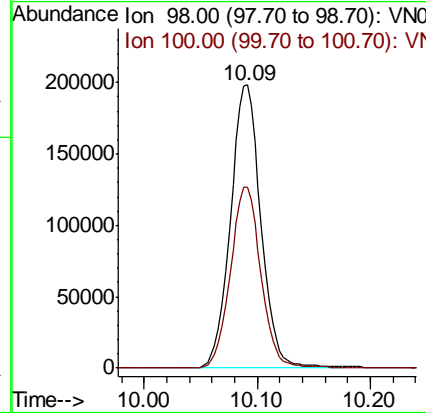
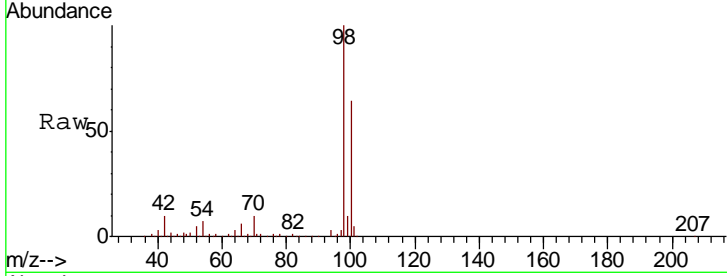




#63
 Toluene-d8
 Concen: 31.777 ug/l
 RT: 10.09 min Scan# 2587
 Delta R.T. 0.00 min
 Lab File: VN055783.D
 Acq: 24 May 2019 9:52

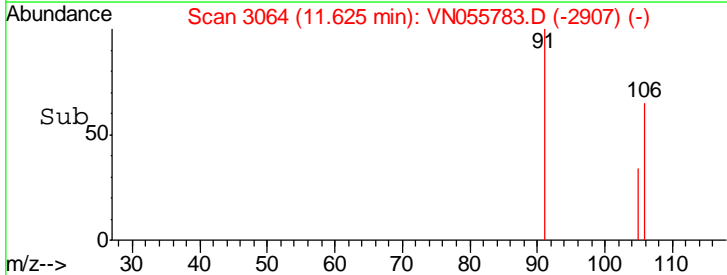
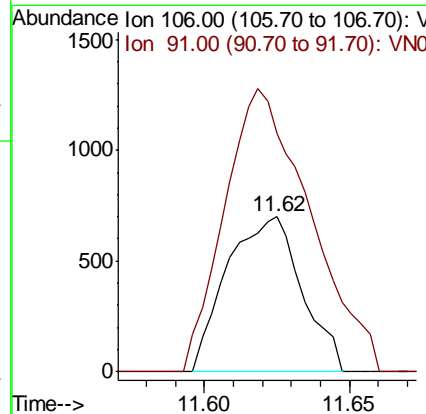
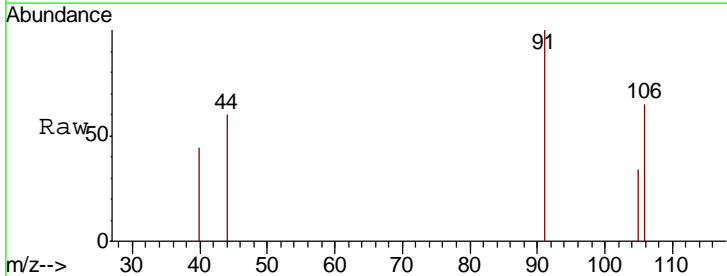
Instrument : MSVOA_N
 ClientSampled : VN0524WBL01

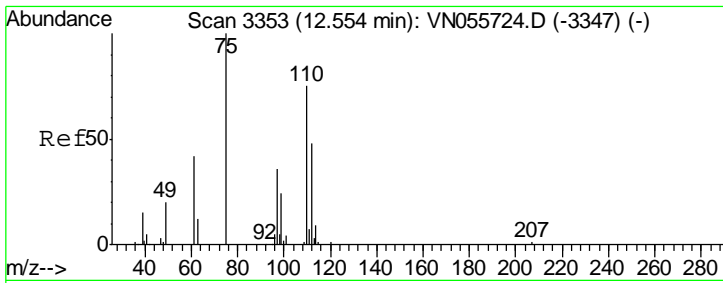
Tgt Ion: 98 Resp: 370452
 Ion Ratio Lower Upper
 98 100
 100 64.2 51.6 77.4



#67
 m/p-Xylenes
 Concen: 0.220 ug/l
 RT: 11.62 min Scan# 3064
 Delta R.T. 0.01 min
 Lab File: VN055783.D
 Acq: 24 May 2019 9:52

Tgt Ion: 106 Resp: 1254
 Ion Ratio Lower Upper
 106 100
 91 208.9 159.5 239.3

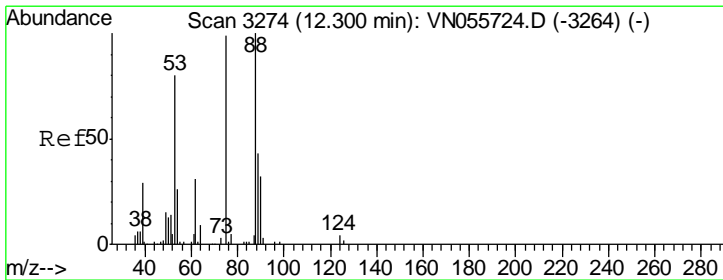
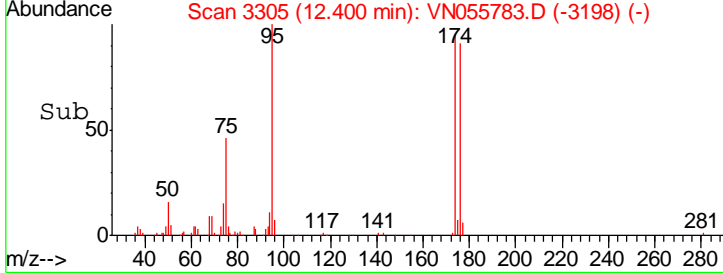
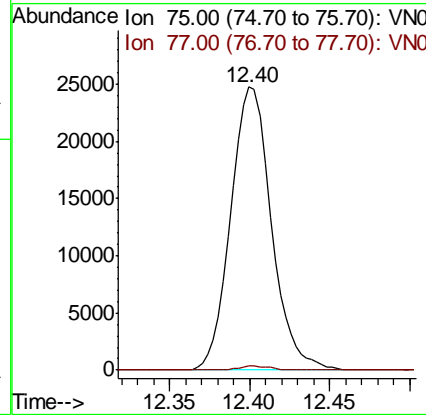
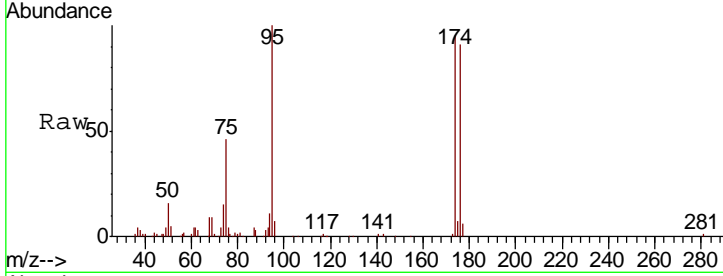




#72
 1,2,3-Trichloropropane
 Concen: 10.999 ug/l
 RT: 12.40 min Scan# 3305
 Delta R.T. -0.15 min
 Lab File: VN055783.D
 Acq: 24 May 2019 9:52

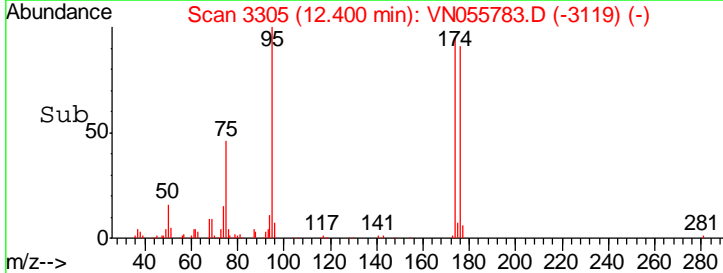
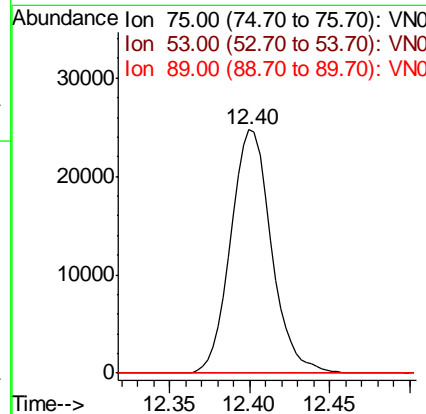
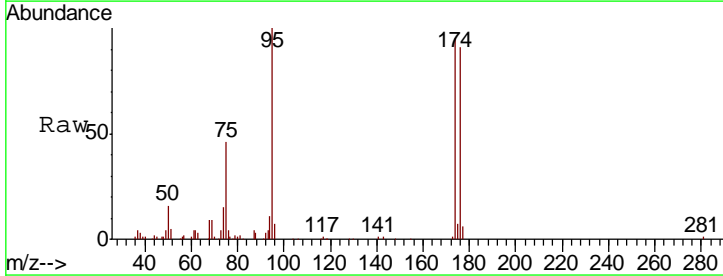
Instrument : MSVOA_N
 ClientSampled : VN0524WBL01

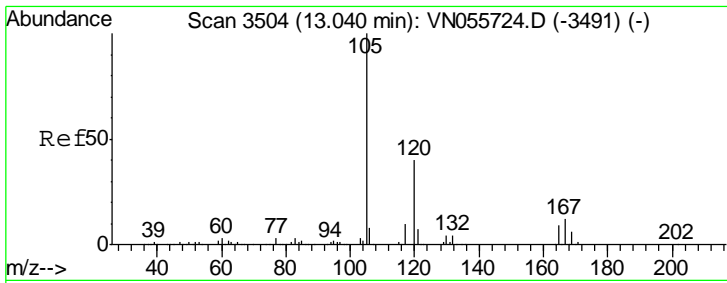
Tgt Ion	Resp	Lower	Upper
75	100		
77	1.1	0.0	349.8



#77
 t-1,4-Dichloro-2-butene
 Concen: 27.691 ug/l
 RT: 12.40 min Scan# 3305
 Delta R.T. 0.10 min
 Lab File: VN055783.D
 Acq: 24 May 2019 9:52

Tgt Ion	Resp	Lower	Upper
75	100		
53	0.0	40.1	120.3#
89	0.0	22.6	67.8#

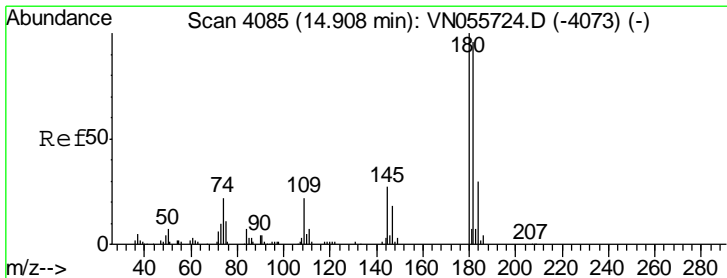
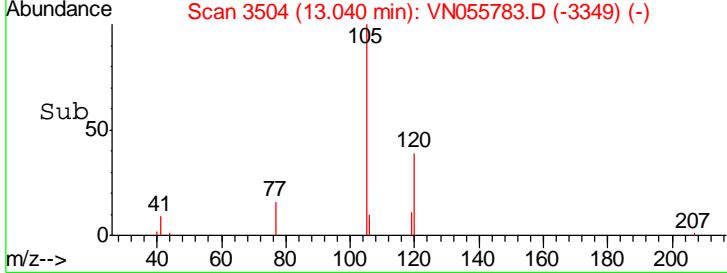
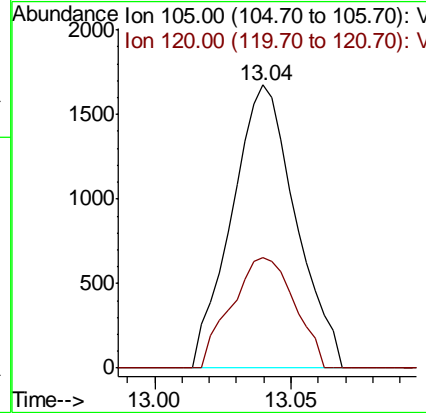
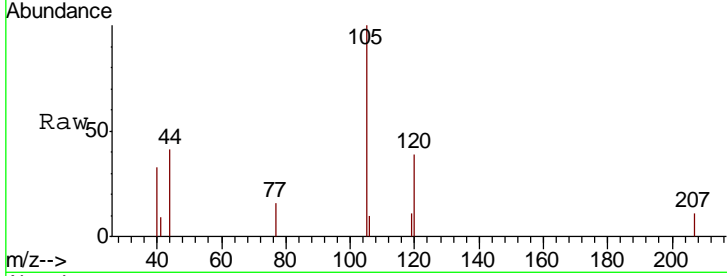




#80
 1,2,4-Trimethylbenzene
 Concen: 0.225 ug/l
 RT: 13.04 min Scan# 3504
 Delta R.T. -0.00 min
 Lab File: VN055783.D
 Acq: 24 May 2019 9:52

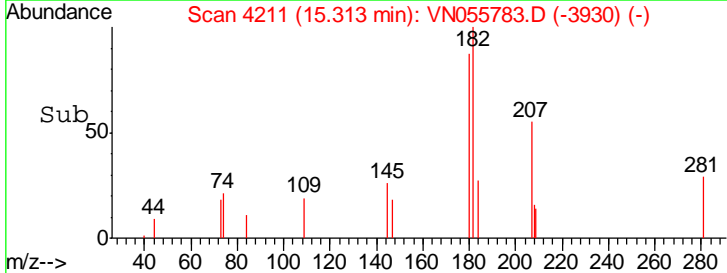
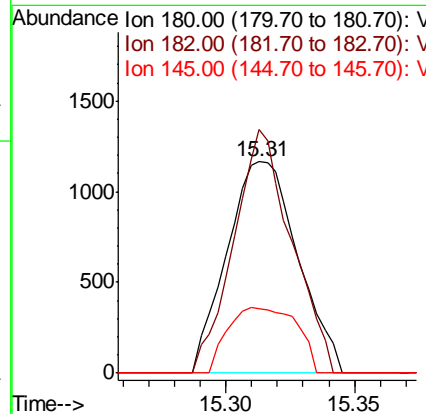
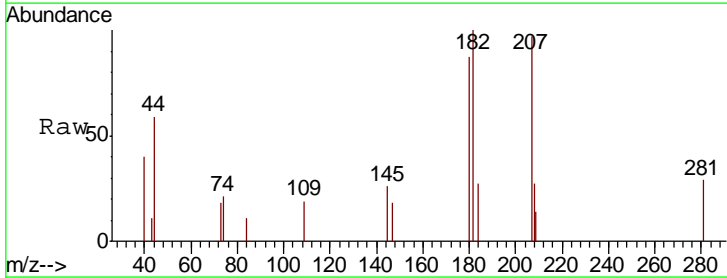
Instrument :
 MSVOA_N
 ClientSampled :
 VN0524WBL01

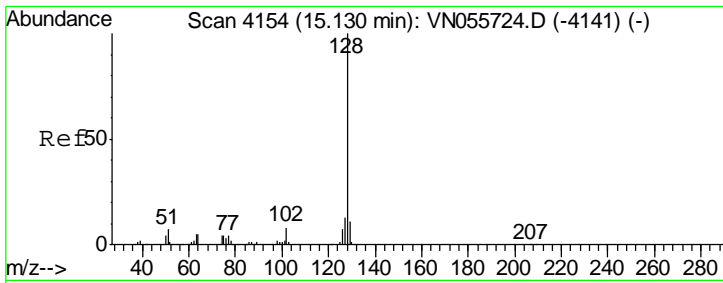
Tgt Ion:105 Resp: 2722
 Ion Ratio Lower Upper
 105 100
 120 38.5 0.0 93.6



#89
 1,2,4-Trichlorobenzene
 Concen: 0.671 ug/l
 RT: 15.31 min Scan# 4211
 Delta R.T. 0.40 min
 Lab File: VN055783.D
 Acq: 24 May 2019 9:52

Tgt Ion:180 Resp: 2230
 Ion Ratio Lower Upper
 180 100
 182 94.1 76.1 114.1
 145 30.1 21.8 32.8

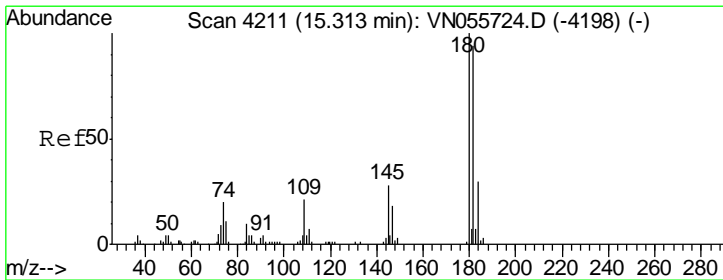
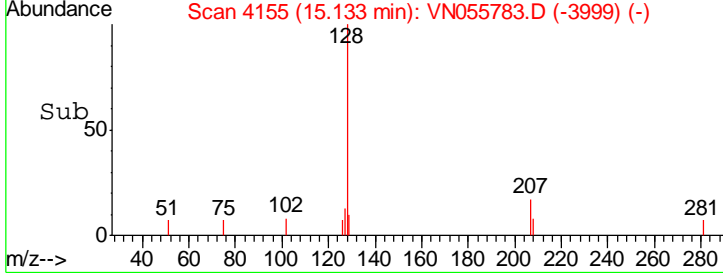
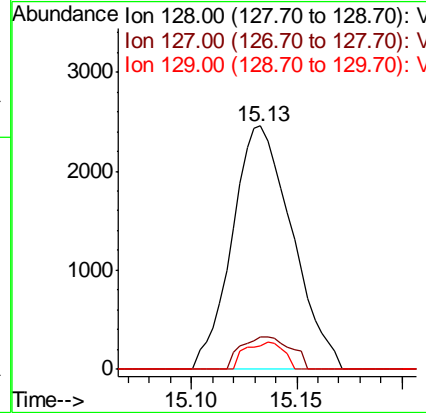
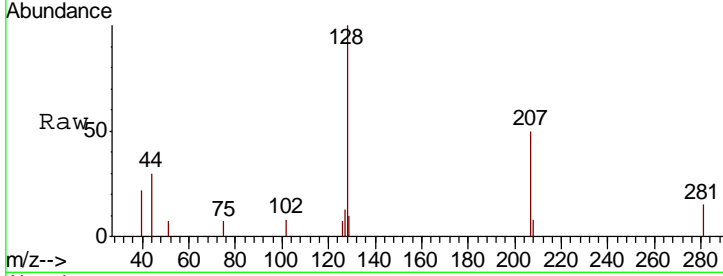




#91
 Naphthalene
 Concen: 0.534 ug/l
 RT: 15.13 min Scan# 4155
 Delta R.T. 0.00 min
 Lab File: VN055783.D
 Acq: 24 May 2019 9:52

Instrument : MSVOA_N
 ClientSampled : VN0524WBL01

Tgt Ion	Resp	Lower	Upper
128	100		
127	11.1	10.0	15.0
129	7.1	8.7	13.1#



#92
 1,2,3-Trichlorobenzene
 Concen: 0.642 ug/l
 RT: 15.31 min Scan# 4211
 Delta R.T. -0.00 min
 Lab File: VN055783.D
 Acq: 24 May 2019 9:52

Tgt Ion	Resp	Lower	Upper
180	100		
182	94.1	0.0	188.6
145	30.1	0.0	56.8

