

Data Path : Z:\VOASRV\HPCHEM1\MSVOA N\DATA\VN052419\
 Data File : VN055786.D
 Acq On : 24 May 2019 11:07
 Operator : JC/SP
 Sample : K2968-01
 Misc : 5.00mL/MSVOA N/WATER
 ALS Vial : 7 Sample Multiplier: 1

Instrument :
 MSVOA_N
 ClientSampleId :
 EFFL-5B

Quant Time: May 24 13:04:38 2019
 Quant Method : Z:\VOASRV\HPCHEM1\MSVOA N\METHODS\624N052219W.M
 Quant Title : METHOD 624 VOLATILE ORGANIC ANALYSIS
 QLast Update : Thu May 23 05:54:54 2019
 Response via : Initial Calibration

Internal Standards	R.T.	QIon	Response	Conc	Units	Dev(Min)
1) Bromochloromethane	7.19	128	60384	30.00	ug/l	0.00
28) 1,4-Difluorobenzene	8.59	114	322307	30.00	ug/l	0.00
57) Chlorobenzene-d5	11.41	117	259967	30.00	ug/l	0.00

System Monitoring Compounds

27) 1,2-Dichloroethane-d4	8.03	65	115527	29.27	ug/l	0.00
Spiked Amount	30.000	Range	50 - 169	Recovery	=	97.57%
60) 4-Bromofluorobenzene	12.40	95	101585	25.12	ug/l	0.00
Spiked Amount	30.000	Range	56 - 143	Recovery	=	83.73%
63) Toluene-d8	10.09	98	373622	31.45	ug/l	0.00
Spiked Amount	30.000	Range	66 - 137	Recovery	=	104.83%

Target Compounds

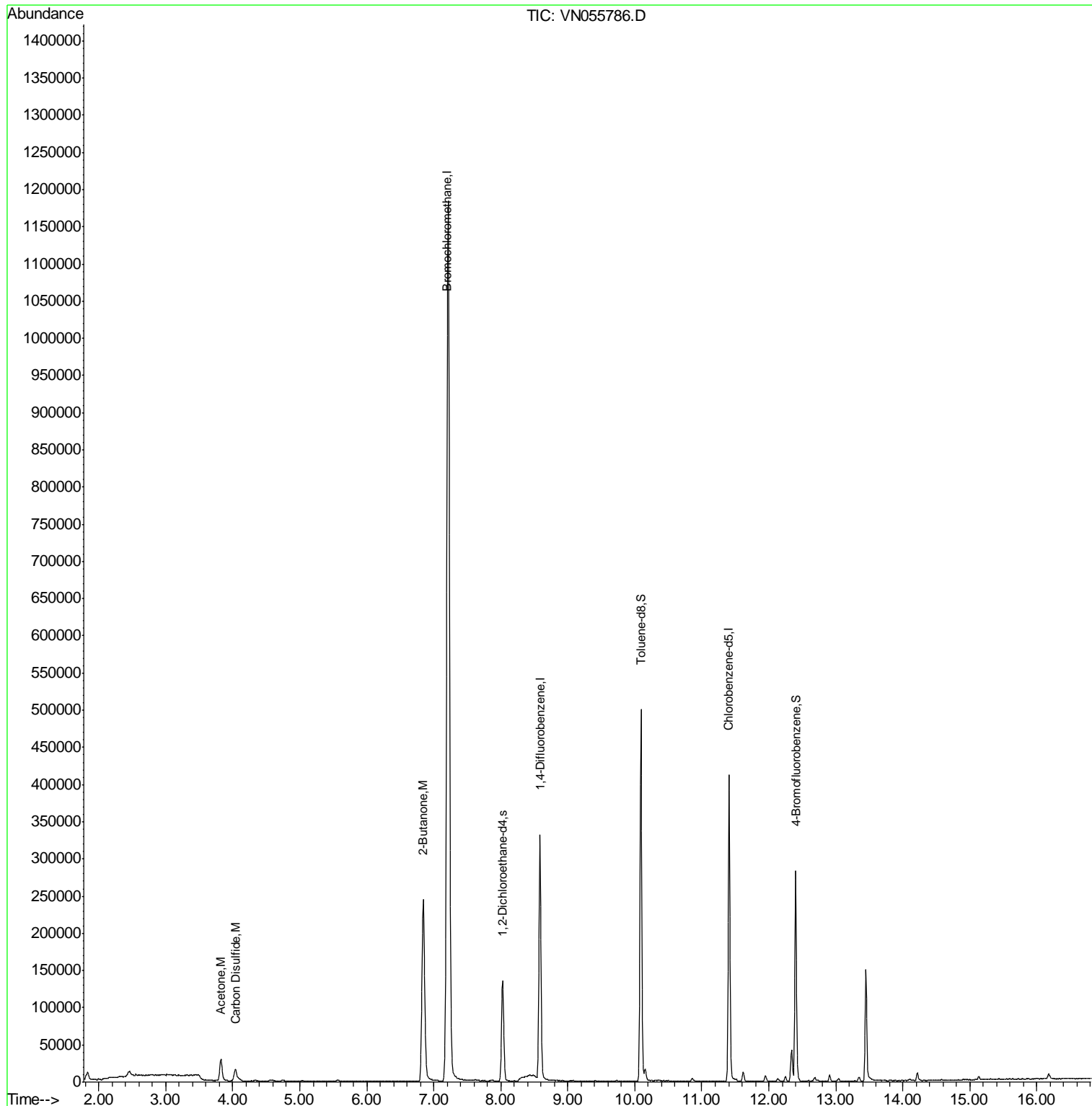
					Ovalue
15) Acetone	3.82	58	16103	29.175	ug/l 90
16) Carbon Disulfide	4.04	76	33865	3.706	ug/l 100
30) 2-Butanone	6.84	43	449904	187.077	ug/l 100

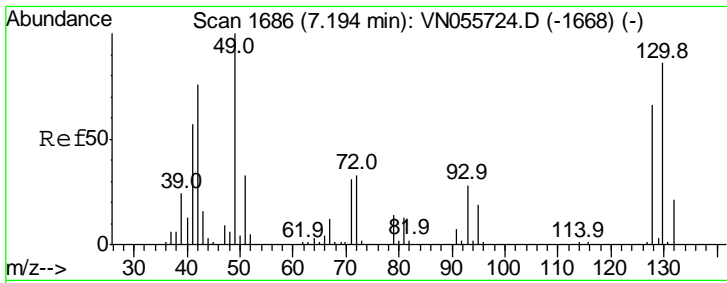
(#) = qualifier out of range (m) = manual integration (+) = signals summed

Data Path : Z:\VOASRV\HPCHEM1\MSVOA N\DATA\VN052419\
Data File : VN055786.D
Acq On : 24 May 2019 11:07
Operator : JC/SP
Sample : K2968-01
Misc : 5.00mL/MSVOA N/WATER
ALS Vial : 7 Sample Multiplier: 1

Instrument :
MSVOA_N
ClientSampleId :
EFFL-5B

Quant Time: May 24 13:04:38 2019
Quant Method : Z:\VOASRV\HPCHEM1\MSVOA N\METHODS\624N052219W.M
Quant Title : METHOD 624 VOLATILE ORGANIC ANALYSIS
QLast Update : Thu May 23 05:54:54 2019
Response via : Initial Calibration

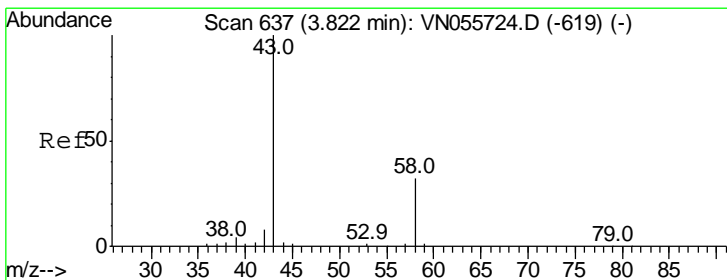
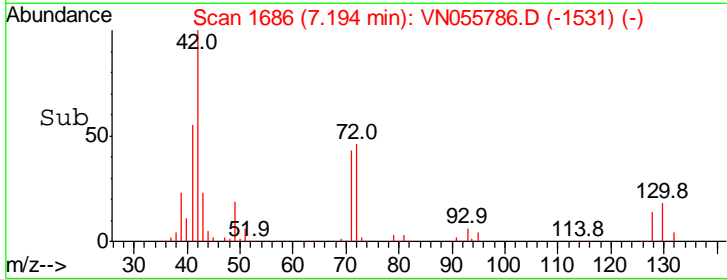
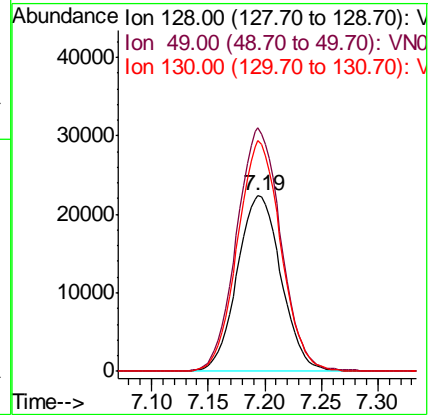
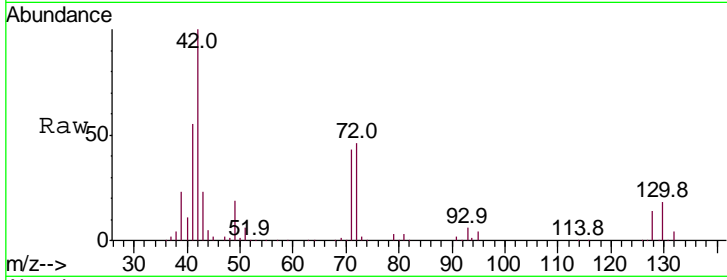




#1
 Bromochloromethane
 Concen: 30.000 ug/l
 RT: 7.19 min Scan# 1686
 Delta R.T. -0.00 min
 Lab File: VN055786.D
 Acq: 24 May 2019 11:07

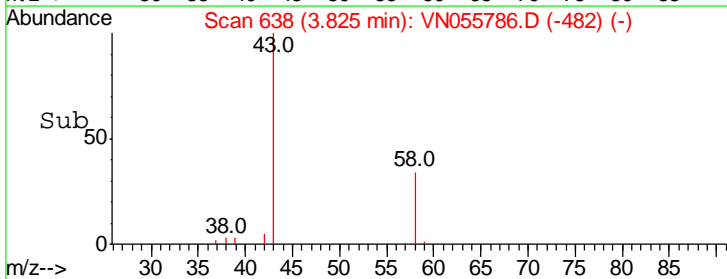
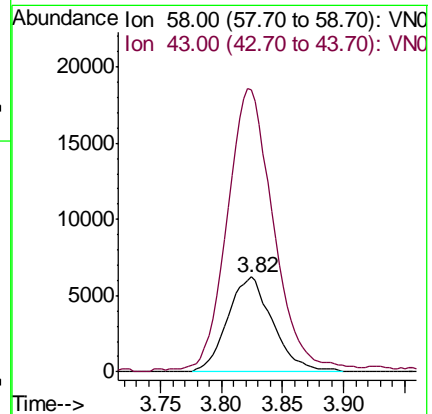
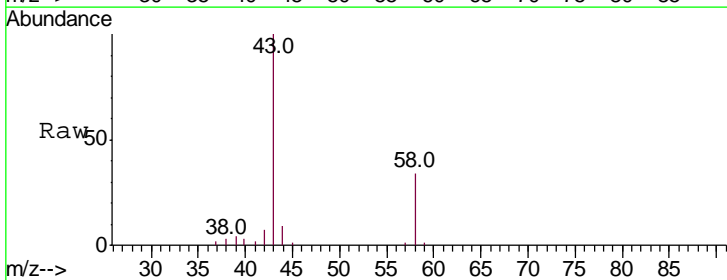
Instrument :
 MSVOA_N
 ClientSampled :
 EFFL-5B

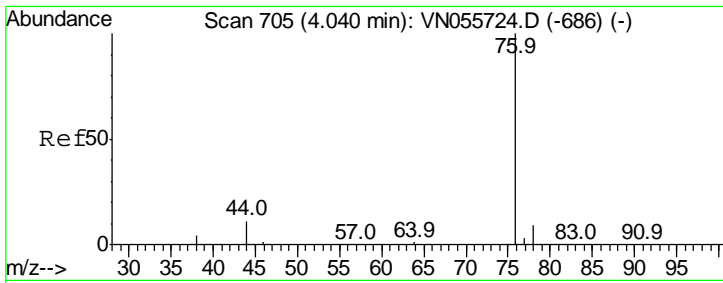
Tgt Ion	Resp	Lower	Upper
128	60384		
49	139.6	0.0	383.2
130	129.8	0.0	326.3



#15
 Acetone
 Concen: 29.175 ug/l
 RT: 3.82 min Scan# 638
 Delta R.T. 0.00 min
 Lab File: VN055786.D
 Acq: 24 May 2019 11:07

Tgt Ion	Resp	Lower	Upper
58	16103		
43	290.9	248.8	373.2

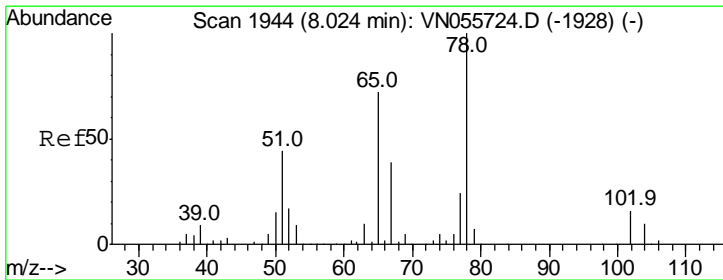
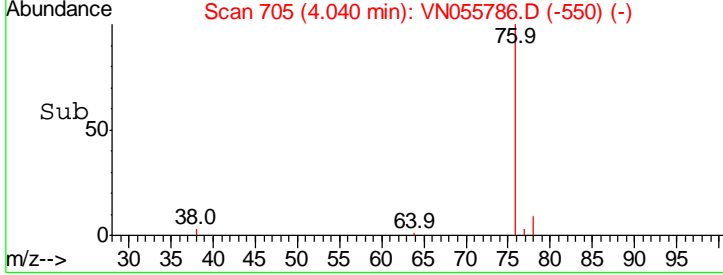
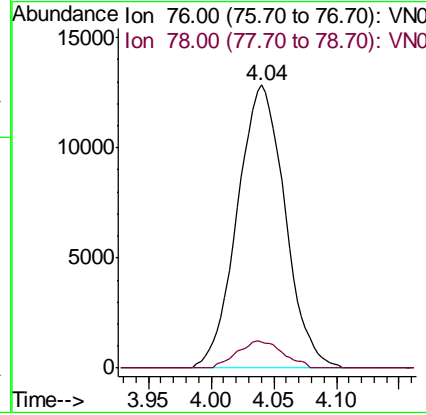
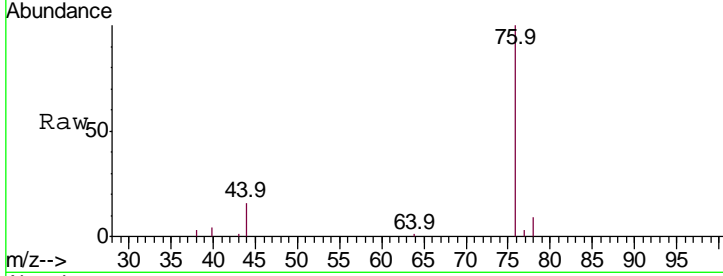




#16
 Carbon Disulfide
 Concen: 3.706 ug/l
 RT: 4.04 min Scan# 705
 Delta R.T. -0.00 min
 Lab File: VN055786.D
 Acq: 24 May 2019 11:07

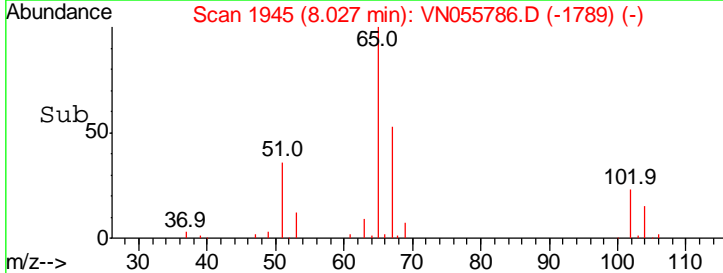
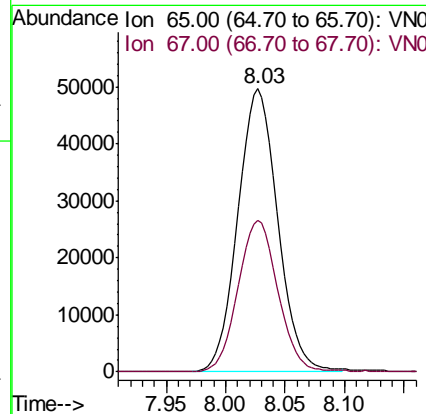
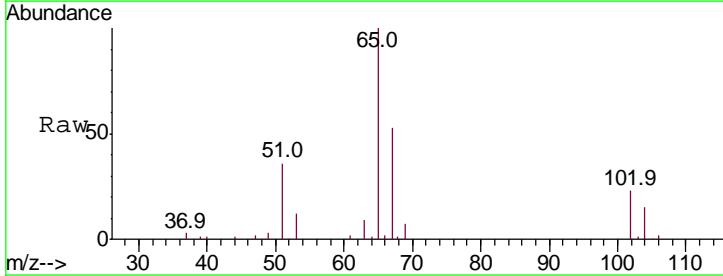
Instrument :
 MSVOA_N
ClientSampled :
 EFFL-5B

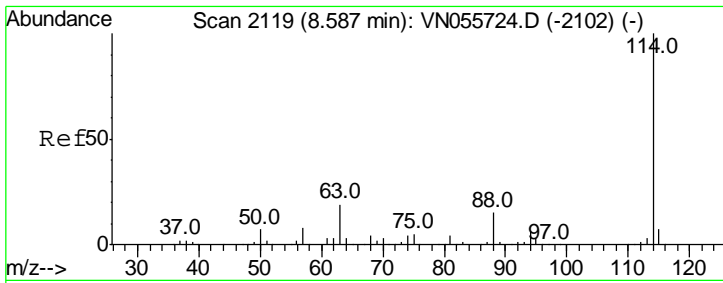
Tgt Ion	Resp	Lower	Upper
76	100		
78	9.4	7.4	11.0



#27
 1,2-Dichloroethane-d4
 Concen: 29.270 ug/l
 RT: 8.03 min Scan# 1945
 Delta R.T. 0.00 min
 Lab File: VN055786.D
 Acq: 24 May 2019 11:07

Tgt Ion	Resp	Lower	Upper
65	100		
67	53.2	43.5	65.3

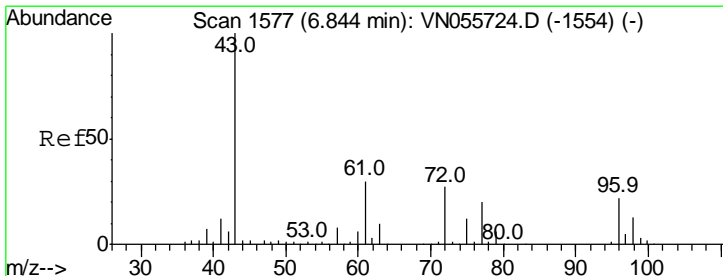
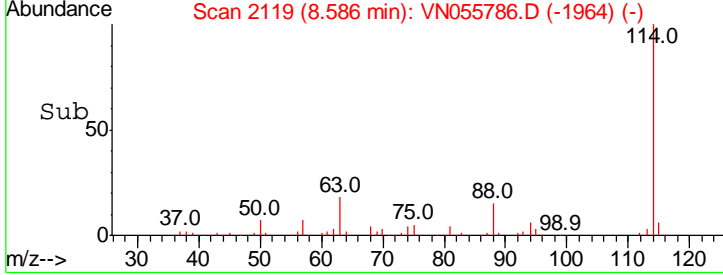
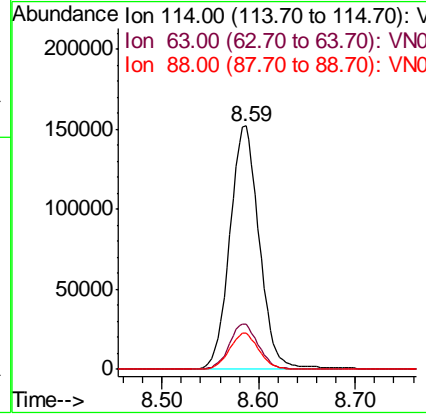
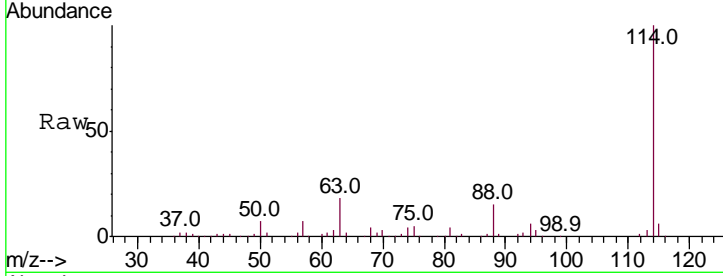




#28
 1,4-Difluorobenzene
 Concen: 30.000 ug/l
 RT: 8.59 min Scan# 2119
 Delta R.T. -0.00 min
 Lab File: VN055786.D
 Acq: 24 May 2019 11:07

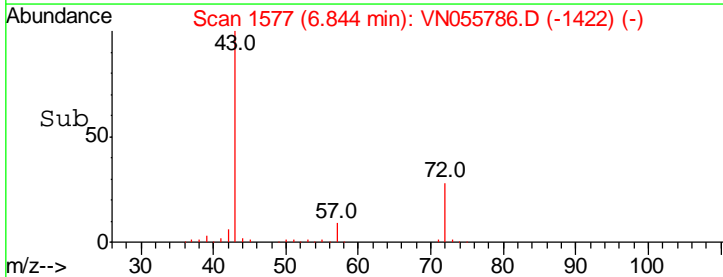
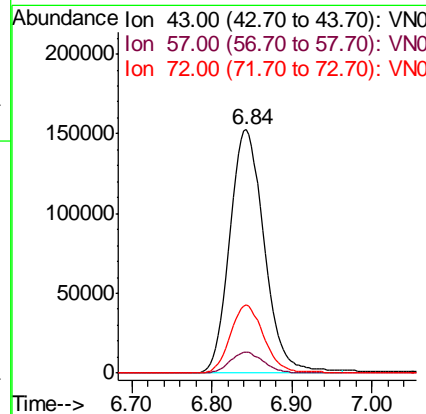
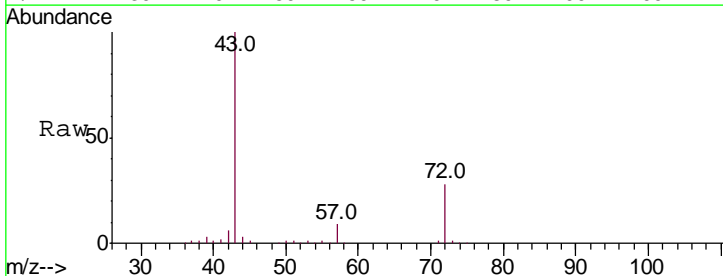
Instrument :
 MSVOA_N
 ClientSampled :
 EFFL-5B

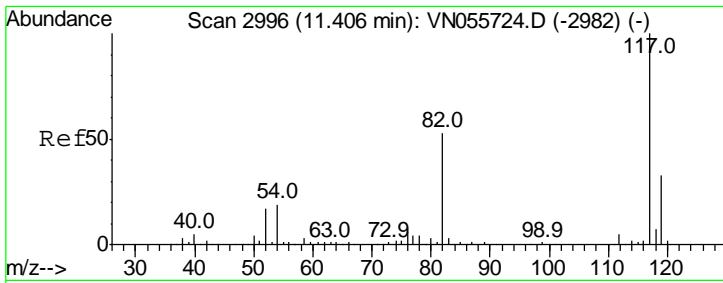
Tgt Ion	Resp	Lower	Upper
114	100		
63	18.5	15.6	23.4
88	15.0	12.3	18.5



#30
 2-Butanone
 Concen: 187.077 ug/l
 RT: 6.84 min Scan# 1577
 Delta R.T. -0.00 min
 Lab File: VN055786.D
 Acq: 24 May 2019 11:07

Tgt Ion	Resp	Lower	Upper
43	100		
57	8.3	6.6	10.0
72	27.1	21.7	32.5

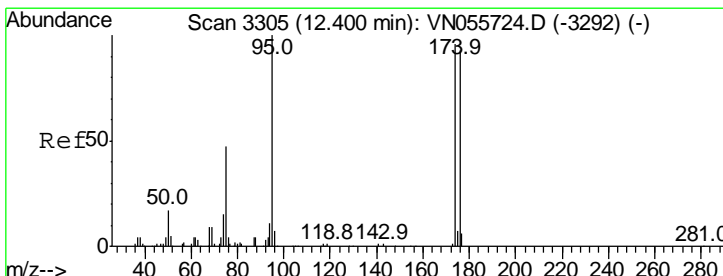
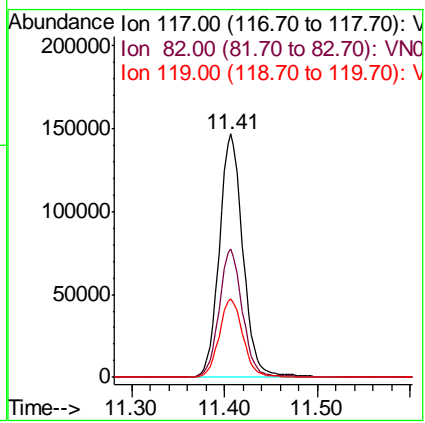
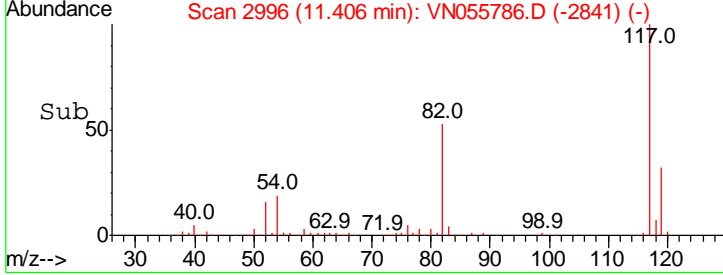
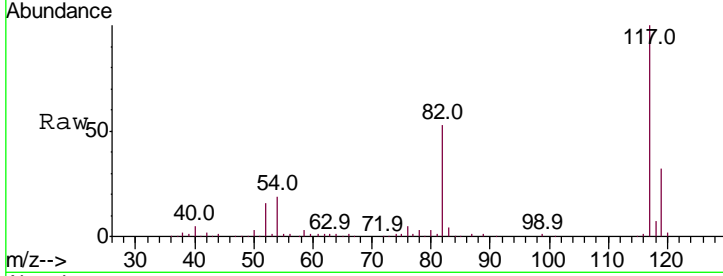




#57
 Chlorobenzene-d5
 Concen: 30.000 ug/l
 RT: 11.41 min Scan# 2996
 Delta R.T. -0.00 min
 Lab File: VN055786.D
 Acq: 24 May 2019 11:07

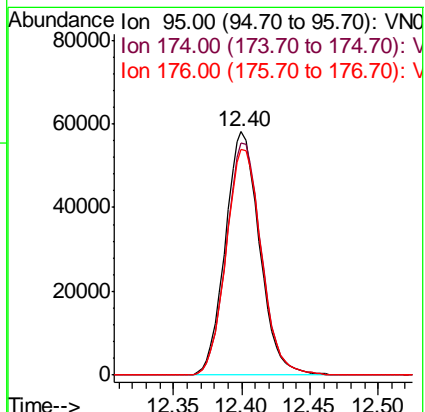
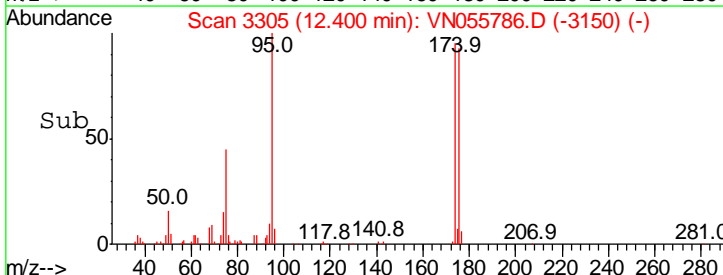
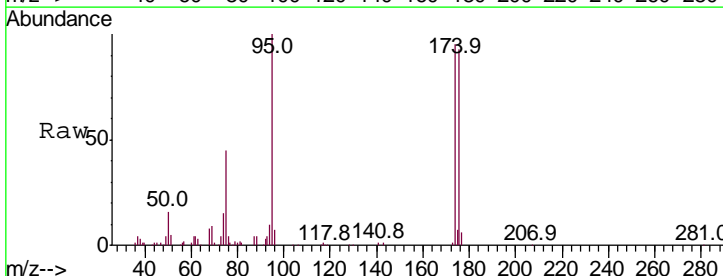
Instrument : MSVOA_N
 ClientSampled : EFFL-5B

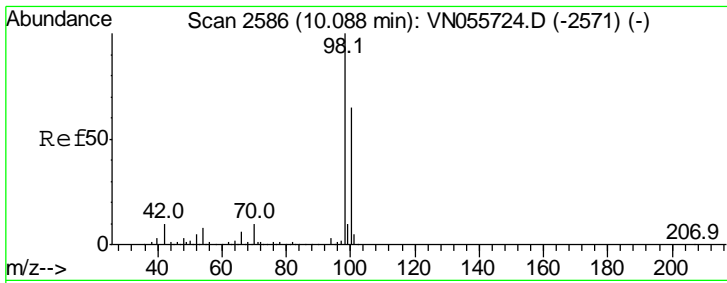
Tgt Ion	Resp	Lower	Upper
117	100		
82	51.7	42.6	64.0
119	32.5	25.9	38.9



#60
 4-Bromofluorobenzene
 Concen: 25.119 ug/l
 RT: 12.40 min Scan# 3305
 Delta R.T. -0.00 min
 Lab File: VN055786.D
 Acq: 24 May 2019 11:07

Tgt Ion	Resp	Lower	Upper
95	100		
174	97.2	75.7	113.5
176	95.5	74.1	111.1





#63
 Toluene-d8
 Concen: 31.449 ug/l
 RT: 10.09 min Scan# 2586
 Delta R.T. -0.00 min
 Lab File: VN055786.D
 Acq: 24 May 2019 11:07

Instrument :
 MSVOA_N
 ClientSampled :
 EFFL-5B

Tot Ion	98	Resp	373622
Ion	Ratio	Lower	Upper
98	100		
100	64.2	51.6	77.4

