

Data Path : Z:\VOASRV\HPCHEM1\MSVOA N\DATA\VN052419\
 Data File : VN055825.D
 Acq On : 25 May 2019 4:14
 Operator : JC/SP
 Sample : K3037-05
 Misc : 5.00mL/MSVOA N/WATER
 ALS Vial : 48 Sample Multiplier: 1

Instrument :
 MSVOA_N
 ClientSampleId :
 MW5-R1-1

Integration Parameters: RTEINT.P

Integrator: RTE
 Smoothing : ON Filtering: 5
 Sampling : 1 Min Area: 3 % of largest Peak
 Start Thrs: 0.2 Max Peaks: 100
 Stop Thrs : 0 Peak Location: TOP

If leading or trailing edge < 100 prefer < Baseline drop else tangent >
 Peak separation: 5

Method : Z:\VOASRV\HPCHEM1\MSVOA_N\METHODS\82N052319W.M
 Title : SW846 8260

Signal : TIC

peak #	R.T. min	first scan	max scan	last scan	PK TY	peak height	corr. area	corr. % max.	% of total
1	1.986	56	66	82	rBV	254209	341604	6.59%	1.943%
2	4.085	694	719	738	rBV	19278	56884	1.10%	0.323%
3	6.828	1553	1572	1597	rBV2	44181	129659	2.50%	0.737%
4	7.590	1790	1809	1820	rBV	237254	586452	11.31%	3.335%
5	7.664	1820	1832	1855	rVB	443683	1044481	20.14%	5.940%
6	8.027	1928	1945	1969	rBV2	231888	541085	10.43%	3.077%
7	8.584	2103	2118	2161	rVB	598491	1296198	24.99%	7.371%
8	10.092	2568	2587	2596	rBV	938769	1746495	33.67%	9.932%
9	10.156	2596	2607	2648	rVB	1412565	2724785	52.54%	15.496%
10	10.632	2740	2755	2804	rVB	2835038	5186427	100.00%	29.495%
11	11.407	2980	2996	3025	rBV	861574	1525411	29.41%	8.675%
12	12.400	3292	3305	3331	rBV	673017	1152880	22.23%	6.556%
13	13.342	3585	3598	3617	rBV	664627	1104464	21.30%	6.281%
14	13.451	3621	3632	3655	rBV	83722	147470	2.84%	0.839%

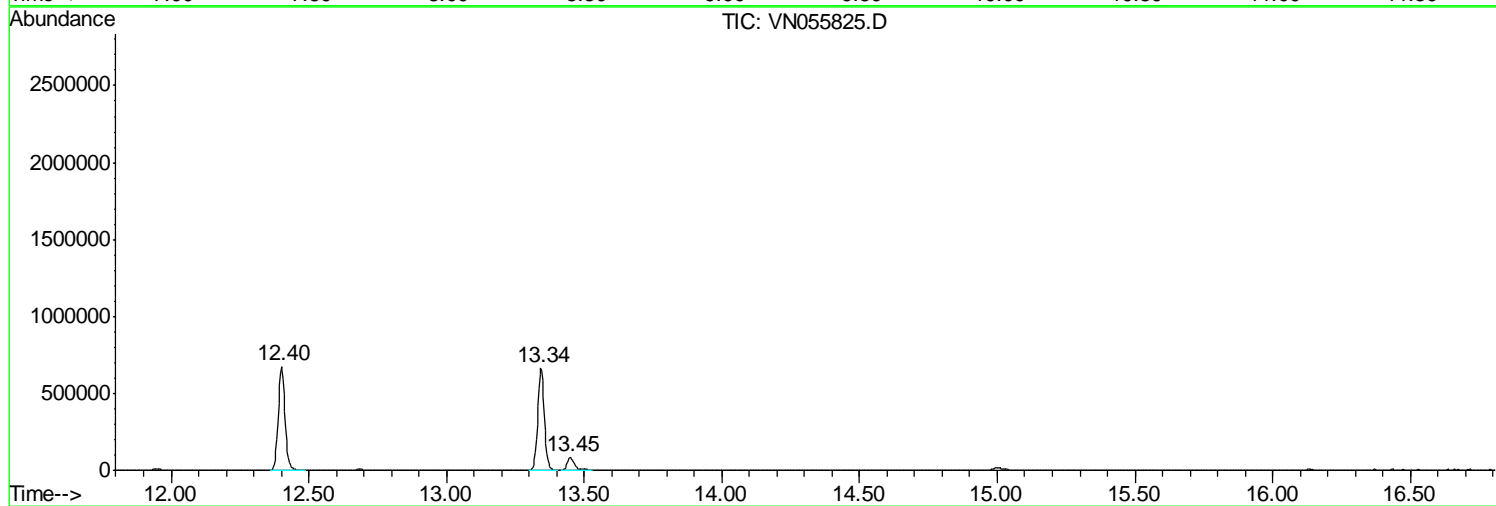
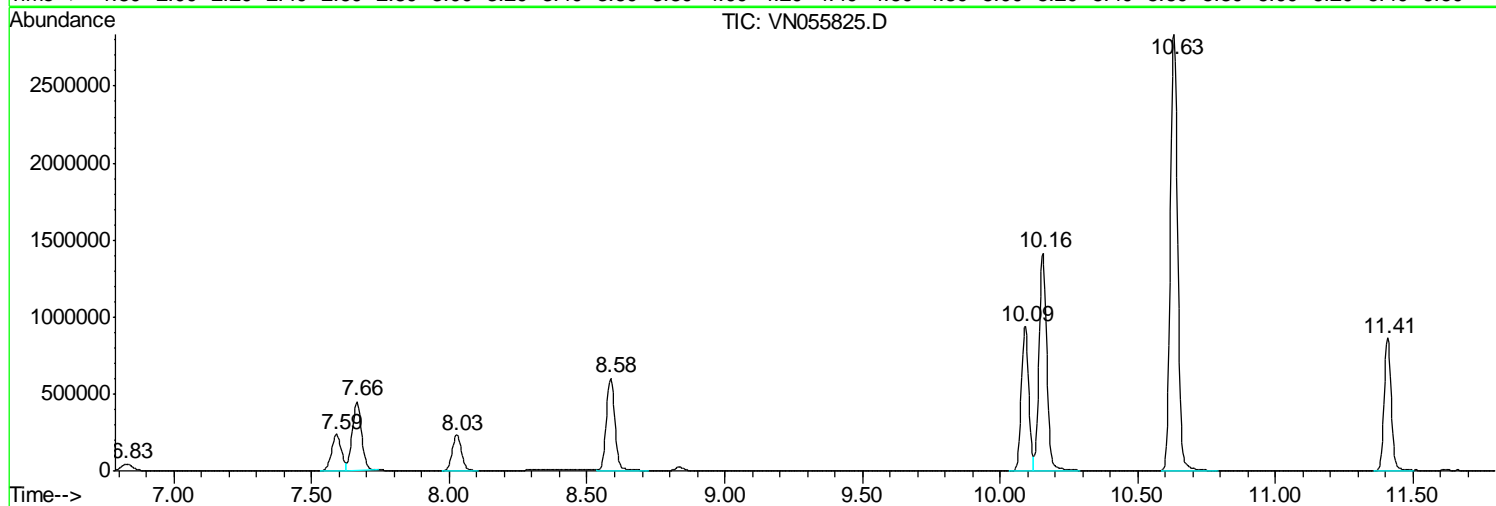
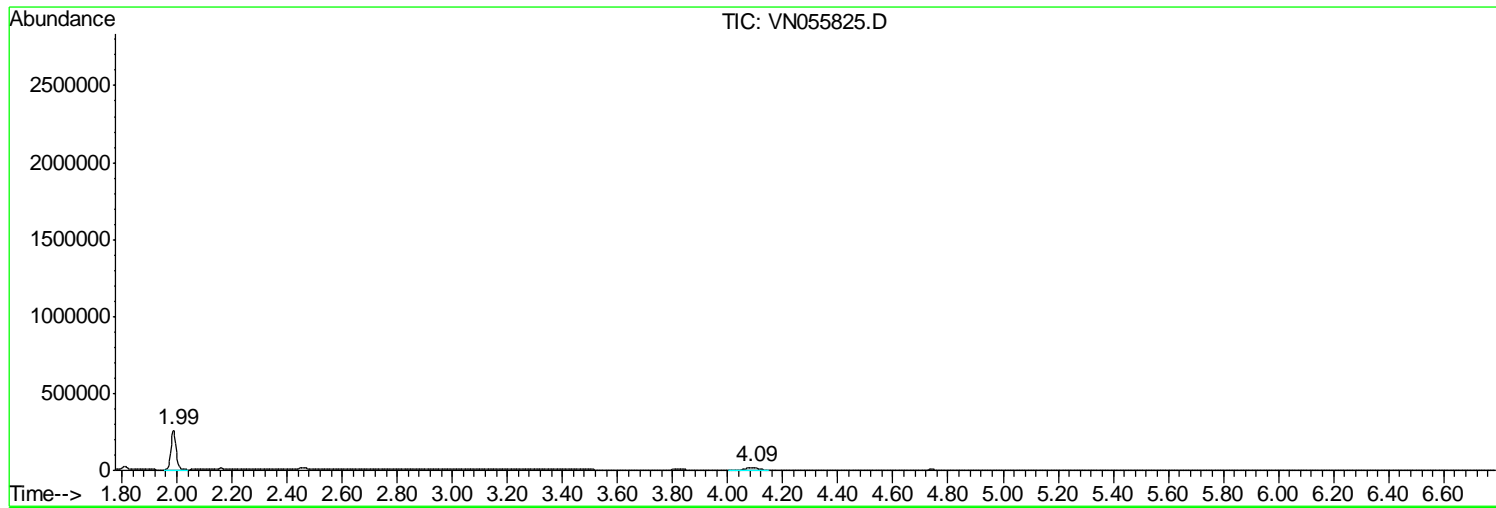
Sum of corrected areas: 17584295

Data Path : Z:\VOASRV\HPCHEM1\MSVOA N\DATA\VN052419\
Data File : VN055825.D
Acq On : 25 May 2019 4:14
Operator : JC/SP
Sample : K3037-05
Misc : 5.00mL/MSVOA N/WATER
ALS Vial : 48 Sample Multiplier: 1

Instrument :
MSVOA_N
ClientSampled :
MW5-R1-1

Quant Method : Z:\VOASRV\HPCHEM1\MSVOA_N\METHODS\82N052319W.M
Quant Title : SW846 8260

TIC Library : C:\DATABASE\NIST11.L
TIC Integration Parameters: LSCINT.P



Data Path : Z:\VOASRV\HPCHEM1\MSVOA N\DATA\VN052419\
 Data File : VN055825.D
 Acq On : 25 May 2019 4:14
 Operator : JC/SP
 Sample : K3037-05
 Misc : 5.00mL/MSVOA N/WATER
 ALS Vial : 48 Sample Multiplier: 1

Instrument :
 MSVOA_N
 ClientSampled :
 MW5-R1-1

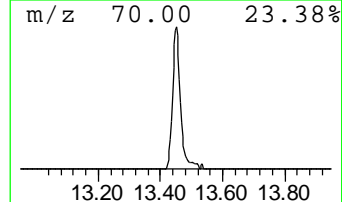
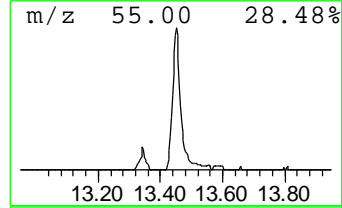
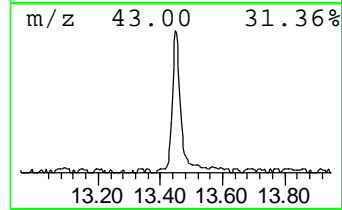
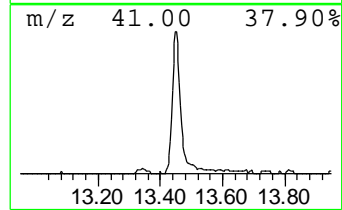
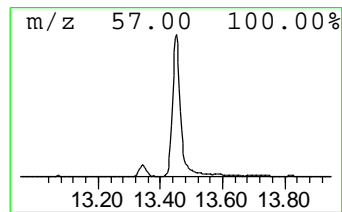
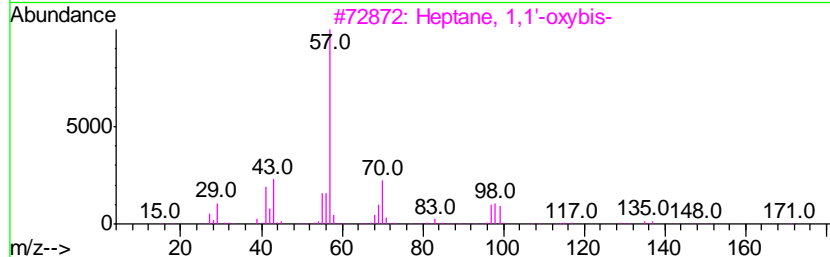
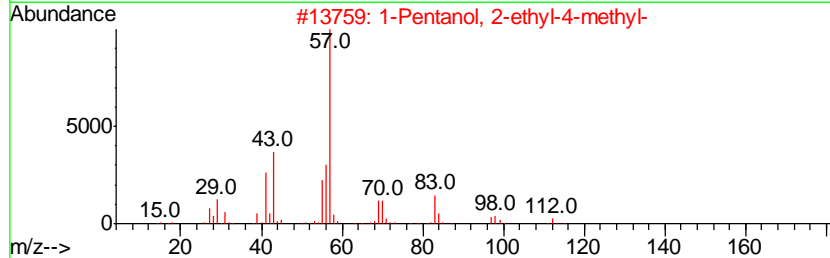
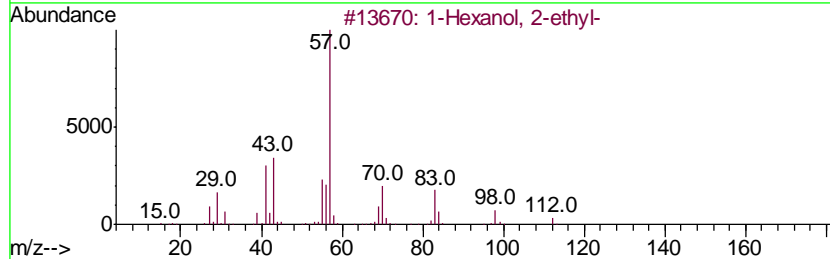
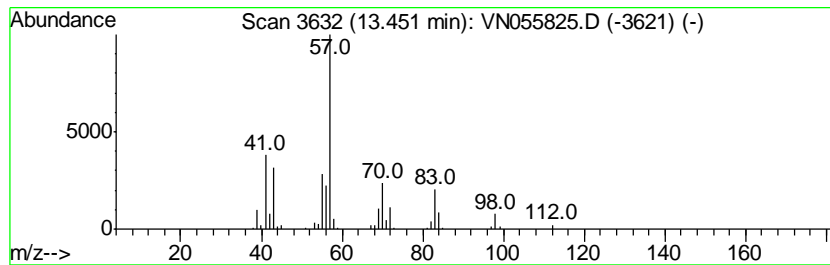
Quant Method : Z:\VOASRV\HPCHEM1\MSVOA_N\METHODS\82N052319W.M
 Quant Title : SW846 8260

TIC Library : C:\DATABASE\NIST11.L
 TIC Integration Parameters: LSCINT.P

 Peak Number 2 1-Hexanol, 2-ethyl- Concentration Rank 2

R.T.	EstConc	Area	Relative to ISTD	R.T.
13.45	6.68 ug/l	147470	1,4-Dichlorobenzene-d4	13.34

Hit#	of	Tentative ID	MW	MolForm	CAS#	Qual
1	5	1-Hexanol, 2-ethyl-	130	C8H18O	000104-76-7	78
2		1-Pentanol, 2-ethyl-4-methyl-	130	C8H18O	000106-67-2	50
3		Heptane, 1,1'-oxybis-	214	C14H30O	000629-64-1	43
4		2-Propyl-1-pentanol	130	C8H18O	058175-57-8	43
5		2-Ethyl-1-hexanol, methyl ether	144	C9H20O	1000365-10-2	43



Data Path : Z:\VOASRV\HPCHEM1\MSVOA_N\DATA\VN052419\
Data File : VN055825.D
Acq On : 25 May 2019 4:14
Operator : JC/SP
Sample : K3037-05
Misc : 5.00mL/MSVOA_N/WATER
ALS Vial : 48 Sample Multiplier: 1

Instrument :
MSVOA_N
ClientSampleId :
MW5-R1-1

Quant Method : Z:\VOASRV\HPCHEM1\MSVOA_N\METHODS\82N052319W.M
Quant Title : SW846 8260

TIC Library : C:\DATABASE\NIST11.L
TIC Integration Parameters: LSCINT.P

TIC Top Hit name	RT	EstConc	Units	Response	--Internal Standard--			
					#	RT	Resp	Conc
1-Hexanol, 2-ethyl-	13.45	6.7	ug/l	147470	4	13.34	1104460	50.0