

Data Path : Z:\voasrv\HPCHEM1\MSVOA_N\Data\VN052422\
 Data File : VN072599.D
 Acq On : 24 May 2022 20:30
 Operator : JC\MD
 Sample : N2990-20
 Misc : 5.0mL/MSVOA_N/WATER
 ALS Vial : 19 Sample Multiplier: 1

Instrument :
 MSVOA_N
 ClientSampleId :
 RB-220517

Integration Parameters: RTEINT.P

Integrator: RTE

Smoothing : ON

Filtering: 5

Sampling : 1

Min Area: 3 % of largest Peak

Start Thrs: 0.2

Max Peaks: 100

Stop Thrs : 0

Peak Location: TOP

If leading or trailing edge < 100 prefer < Baseline drop else tangent >

Peak separation: 5

Method : Z:\voasrv\HPCHEM1\MSVOA_N\methods\82N052422W.M

Title : SW846 8260

Signal : TIC: VN072599.D\data.ms

peak #	R.T. min	first scan	max scan	last scan	PK TY	peak height	corr. area	corr. % max.	% of total
1	2.234	35	42	49	rBV4	4161	10518	1.07%	0.202%
2	2.775	124	134	138	rVB6	6202	18205	1.85%	0.350%
3	7.681	961	968	979	rBV4	4733	13206	1.34%	0.254%
4	8.016	1014	1025	1030	rBV2	118154	278203	28.27%	5.347%
5	8.081	1030	1036	1047	rVB2	196971	449490	45.67%	8.639%
6	8.434	1087	1096	1110	rBV	115871	256817	26.10%	4.936%
7	8.963	1177	1186	1200	rBV	318816	652968	66.35%	12.550%
8	10.439	1429	1437	1449	rBV	525010	959030	97.45%	18.433%
9	10.828	1495	1503	1515	rBV2	5447	17503	1.78%	0.336%
10	11.739	1650	1658	1671	rVB	565406	984138	100.00%	18.915%
11	12.727	1817	1826	1836	rBV	449274	744676	75.67%	14.313%
12	13.669	1978	1986	2001	rBV	496594	818097	83.13%	15.724%

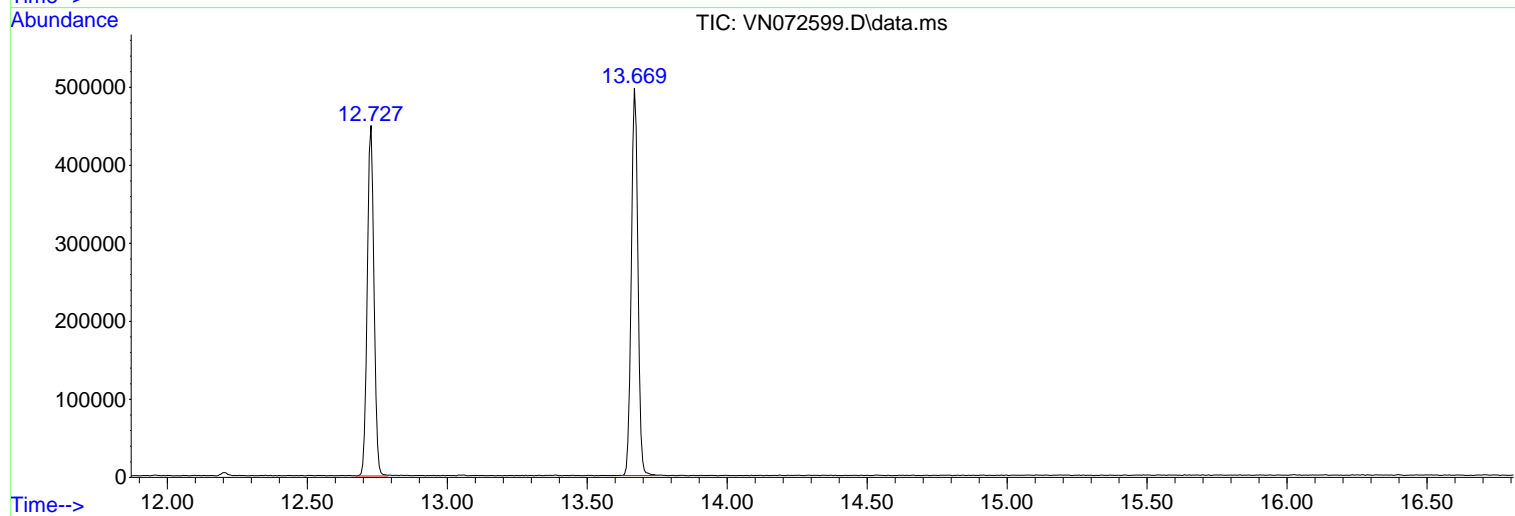
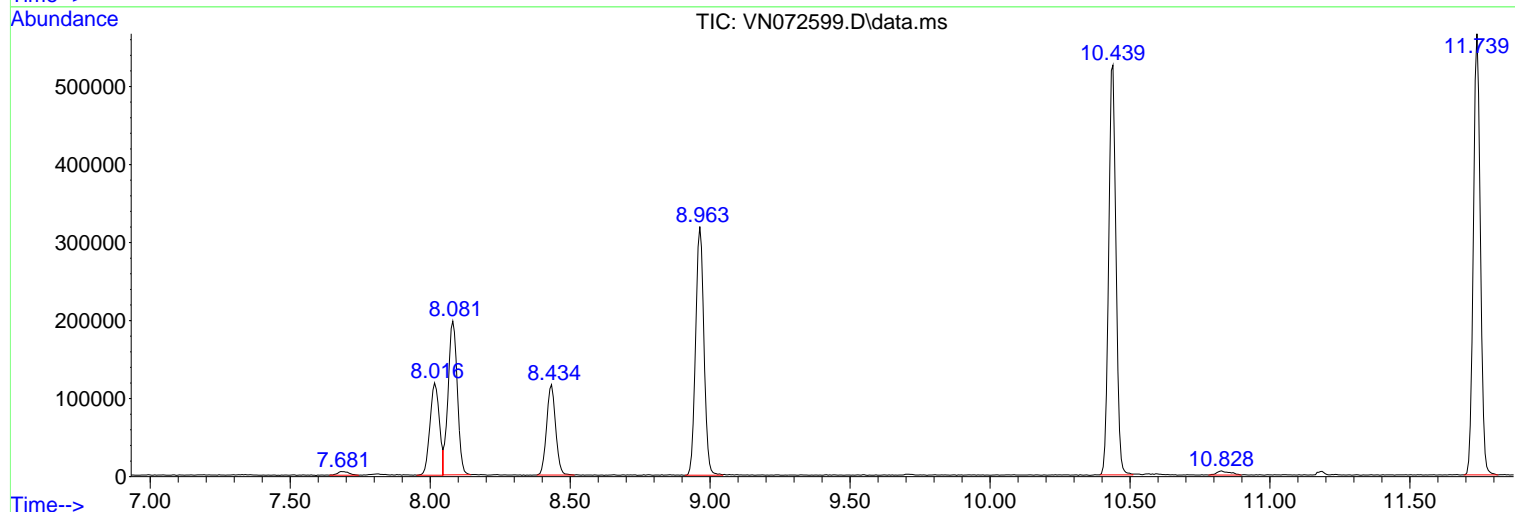
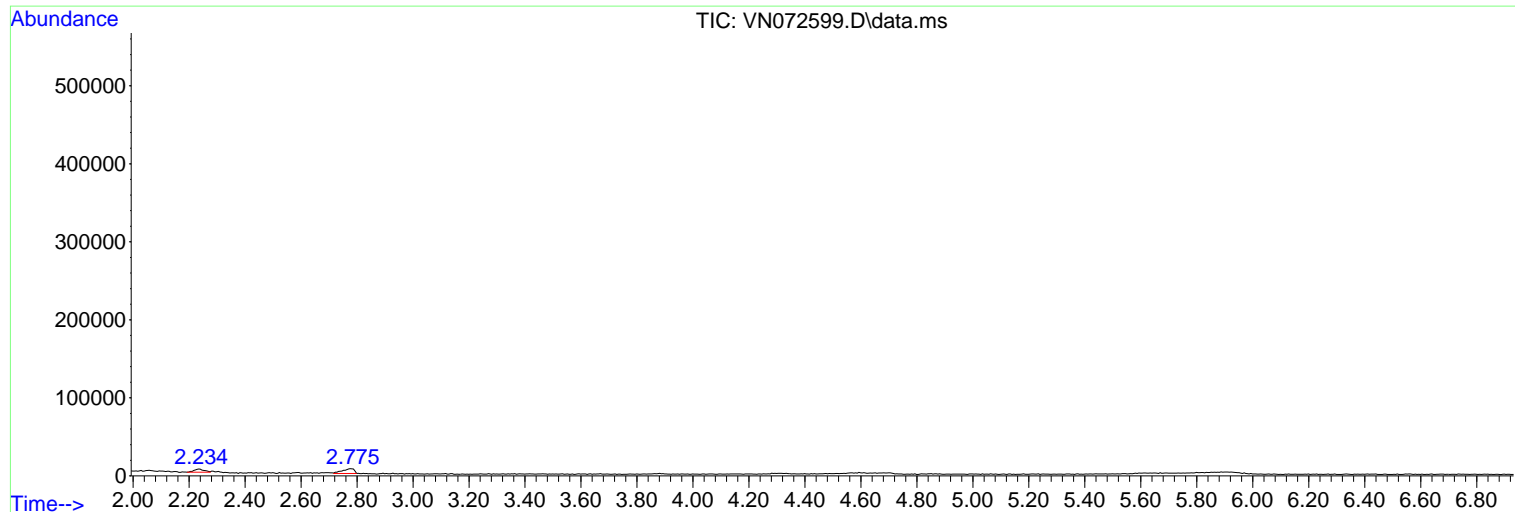
Sum of corrected areas: 5202851

Data Path : Z:\voasrv\HPCHEM1\MSVOA_N\Data\VN052422\
 Data File : VN072599.D
 Acq On : 24 May 2022 20:30
 Operator : JC\MD
 Sample : N2990-20
 Misc : 5.0mL/MSVOA_N/WATER
 ALS Vial : 19 Sample Multiplier: 1

Instrument :
 MSVOA_N
 ClientSampleId :
 RB-220517

Quant Method : Z:\voasrv\HPCHEM1\MSVOA_N\methods\82N052422W.M
 Quant Title : SW846 8260

TIC Library : C:\Database\NIST20.L
 TIC Integration Parameters: LSCINT.P



Library Search Compound Report

Data Path : Z:\voasrv\HPCHEM1\MSVOA_N\Data\VN052422\
Data File : VN072599.D
Acq On : 24 May 2022 20:30
Operator : JC\MD
Sample : N2990-20
Misc : 5.0mL/MSVOA_N/WATER
ALS Vial : 19 Sample Multiplier: 1

Instrument :
MSVOA_N
ClientSampleId :
RB-220517

Quant Method : Z:\voasrv\HPCHEM1\MSVOA_N\methods\82N052422W.M
Quant Title : SW846 8260

TIC Library : C:\Database\NIST20.L
TIC Integration Parameters: LSCINT.P

No Library Search Compounds Detected

Data Path : Z:\voasrv\HPCHEM1\MSVOA_N\Data\VN052422\
Data File : VN072599.D
Acq On : 24 May 2022 20:30
Operator : JC\MD
Sample : N2990-20
Misc : 5.0mL/MSVOA_N/WATER
ALS Vial : 19 Sample Multiplier: 1

Instrument :
MSVOA_N
ClientSampleId :
RB-220517

Quant Method : Z:\voasrv\HPCHEM1\MSVOA_N\methods\82N052422W.M
Quant Title : SW846 8260

TIC Library : C:\Database\NIST20.L
TIC Integration Parameters: LSCINT.P

TIC Top Hit name	RT	EstConc	Units	Response	--Internal Standard--		
					#	RT	Resp Conc
