

Data Path : Z:\voasrv\HPCHEM1\MSVOA\_N\Data\VN052623\  
 Data File : VN077926.D  
 Acq On : 26 May 2023 14:41  
 Operator : JC\MD  
 Sample : 02924-03  
 Misc : 5.0mL/MSVOA\_N/WATER  
 ALS Vial : 10 Sample Multiplier: 1

Instrument :  
 MSVOA\_N  
 ClientSampleId :  
 001-002-003-3

Quant Time: May 29 00:29:09 2023  
 Quant Method : Z:\voasrv\HPCHEM1\MSVOA\_N\methods\82N051523W.M  
 Quant Title : SW846 8260  
 QLast Update : Tue May 16 04:07:42 2023  
 Response via : Initial Calibration

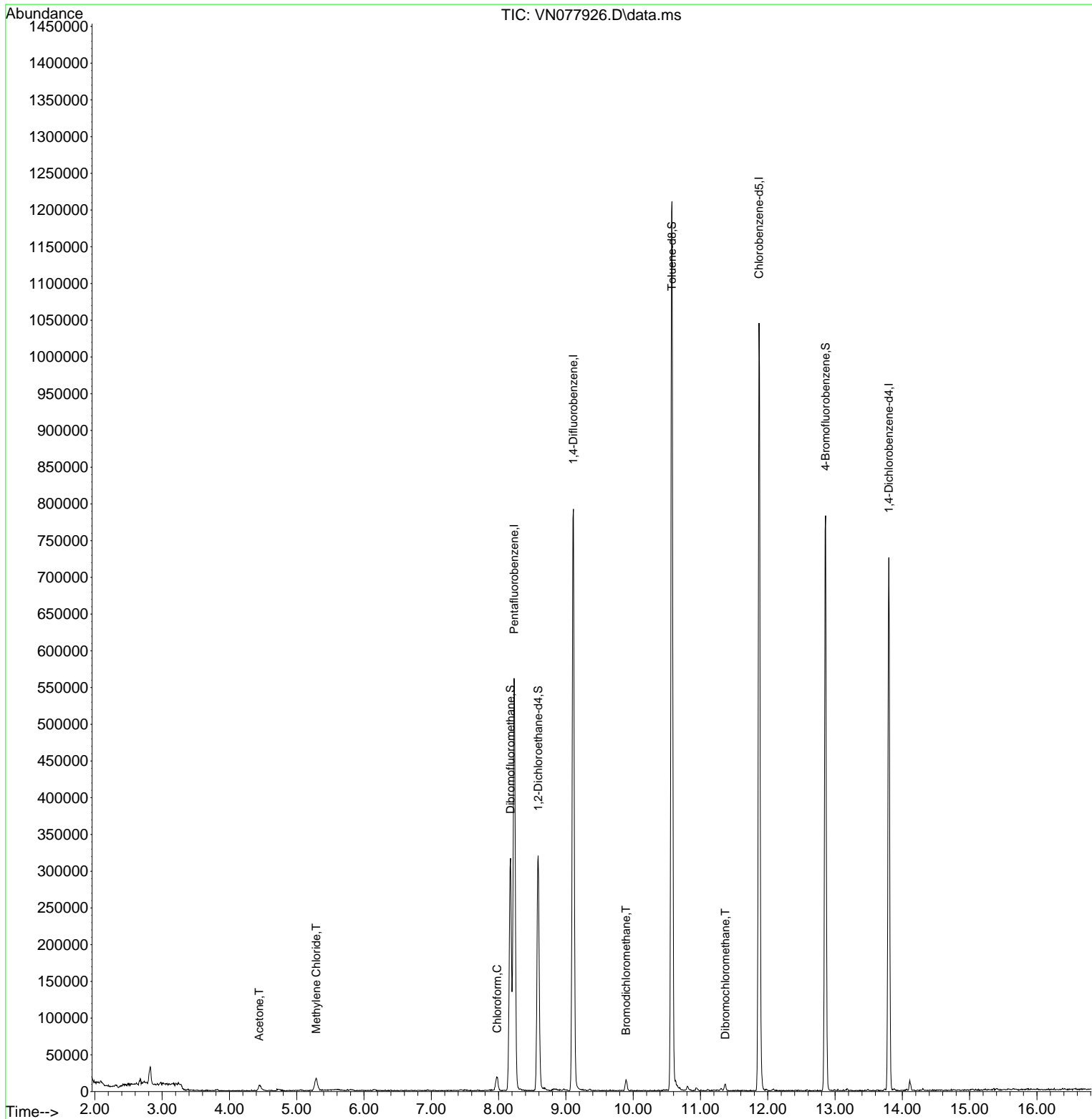
Compound	R.T.	QIon	Response	Conc	Units	Dev(Min)
-----						
Internal Standards						
1) Pentafluorobenzene	8.230	168	397747	50.000	ug/l	0.00
34) 1,4-Difluorobenzene	9.112	114	716655	50.000	ug/l	0.00
63) Chlorobenzene-d5	11.871	117	627331	50.000	ug/l	0.00
72) 1,4-Dichlorobenzene-d4	13.800	152	200469	50.000	ug/l	0.00
System Monitoring Compounds						
33) 1,2-Dichloroethane-d4	8.588	65	271081	45.550	ug/l	0.00
Spiked Amount	50.000	Range	74 - 125	Recovery	=	91.100%
35) Dibromofluoromethane	8.177	113	228379	48.870	ug/l	0.00
Spiked Amount	50.000	Range	75 - 124	Recovery	=	97.740%
50) Toluene-d8	10.576	98	901028	50.092	ug/l	0.00
Spiked Amount	50.000	Range	86 - 113	Recovery	=	100.180%
62) 4-Bromofluorobenzene	12.859	95	285679	44.969	ug/l	0.00
Spiked Amount	50.000	Range	83 - 123	Recovery	=	89.940%
Target Compounds						
						Qvalue
16) Acetone	4.442	43	13592	7.259	ug/l	91
20) Methylene Chloride	5.289	84	13181	0.759	ug/l	96
30) Chloroform	7.977	83	19230	1.981	ug/l	99
47) Bromodichloromethane	9.894	83	10566	1.499	ug/l #	93
60) Dibromochloromethane	11.371	129	4725	0.918	ug/l	93
-----						

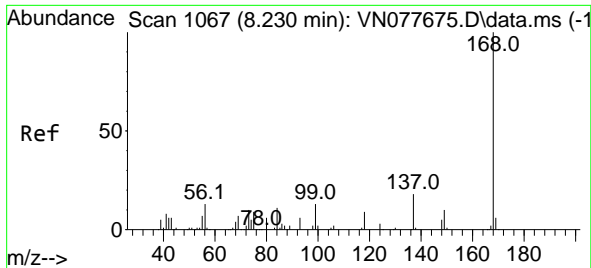
(#) = qualifier out of range (m) = manual integration (+) = signals summed

Data Path : Z:\voasrv\HPCHEM1\MSVOA\_N\Data\VN052623\  
 Data File : VN077926.D  
 Acq On : 26 May 2023 14:41  
 Operator : JC\MD  
 Sample : 02924-03  
 Misc : 5.0mL/MSVOA\_N/WATER  
 ALS Vial : 10 Sample Multiplier: 1

Instrument :  
 MSVOA\_N  
 ClientSampleId :  
 001-002-003-3

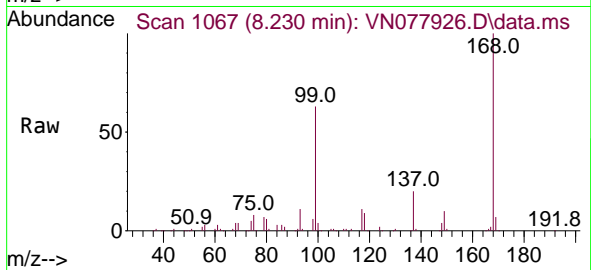
Quant Time: May 29 00:29:09 2023  
 Quant Method : Z:\voasrv\HPCHEM1\MSVOA\_N\methods\82N051523W.M  
 Quant Title : SW846 8260  
 QLast Update : Tue May 16 04:07:42 2023  
 Response via : Initial Calibration



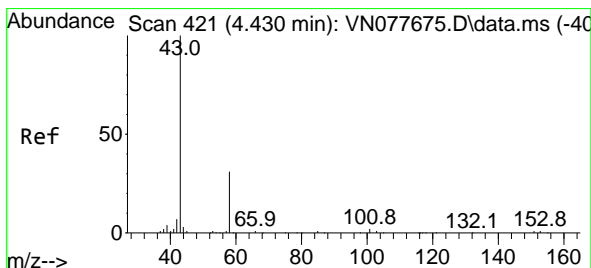
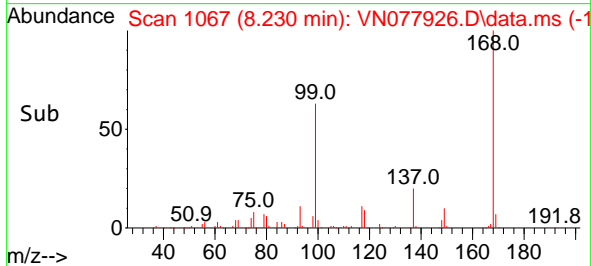
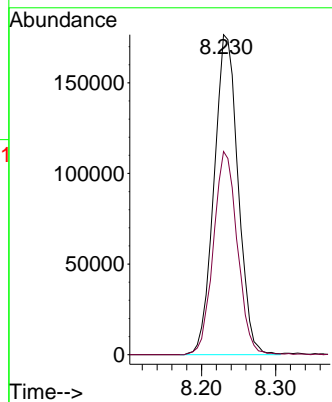


#1  
 Pentafluorobenzene  
 Concen: 50.000 ug/l  
 RT: 8.230 min Scan# 1067  
 Delta R.T. -0.000 min  
 Lab File: VN077926.D  
 Acq: 26 May 2023 14:41

Instrument :  
 MSVOA\_N  
 ClientSampleId :  
 001-002-003-3

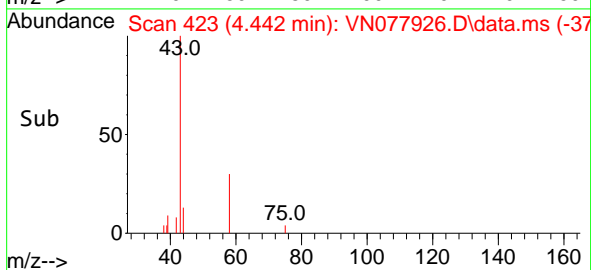
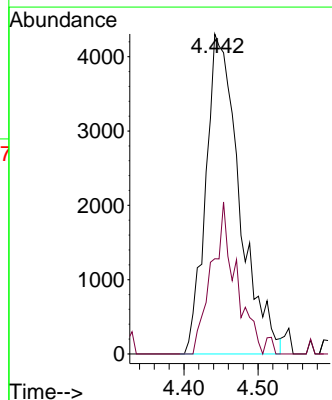
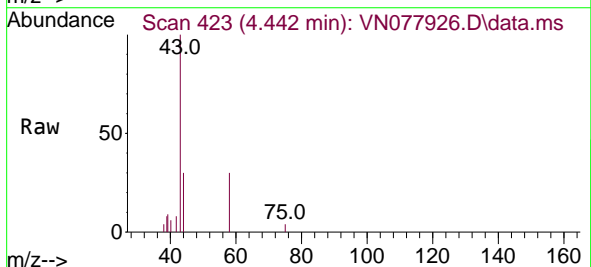


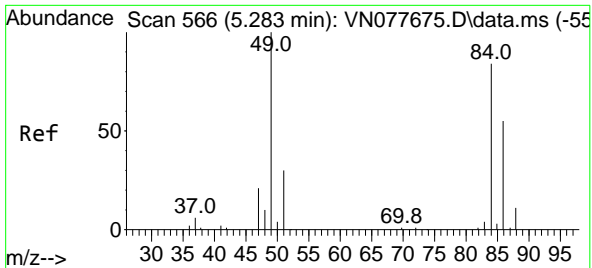
Tgt Ion:168 Resp: 397747  
 Ion Ratio Lower Upper  
 168 100  
 99 63.5 53.0 79.6



#16  
 Acetone  
 Concen: 7.259 ug/l  
 RT: 4.442 min Scan# 423  
 Delta R.T. 0.012 min  
 Lab File: VN077926.D  
 Acq: 26 May 2023 14:41

Tgt Ion: 43 Resp: 13592  
 Ion Ratio Lower Upper  
 43 100  
 58 29.8 28.0 42.0

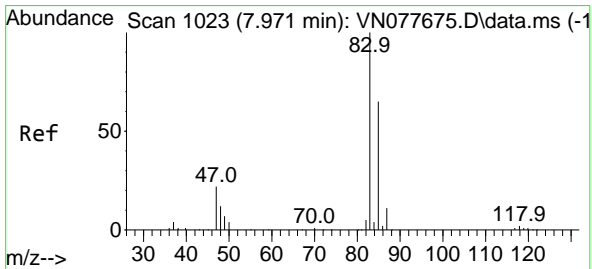
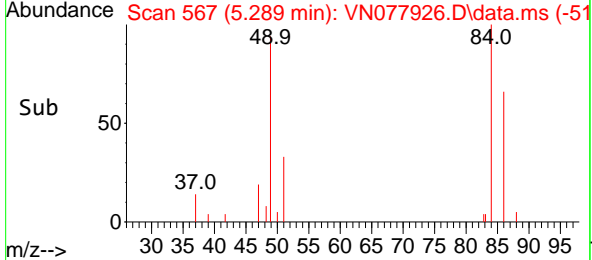
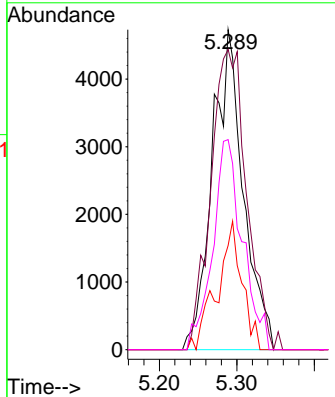
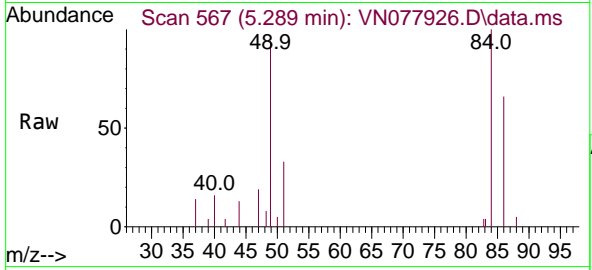




#20  
 Methylene Chloride  
 Concen: 0.759 ug/l  
 RT: 5.289 min Scan# 50  
 Delta R.T. 0.006 min  
 Lab File: VN077926.D  
 Acq: 26 May 2023 14:41

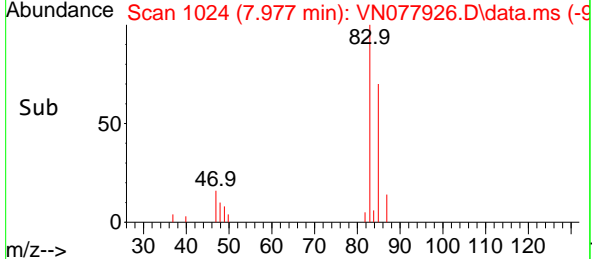
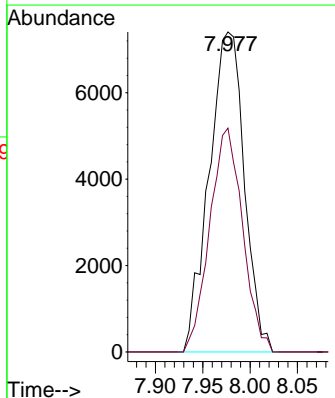
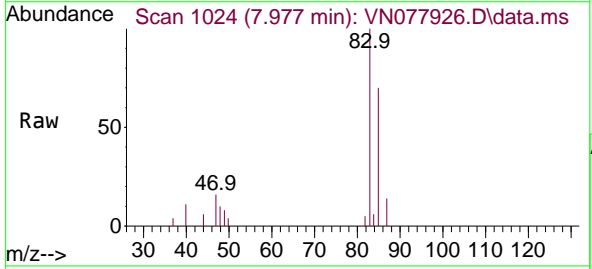
Instrument : MSVOA\_N  
 ClientSampleId : 001-002-003-3

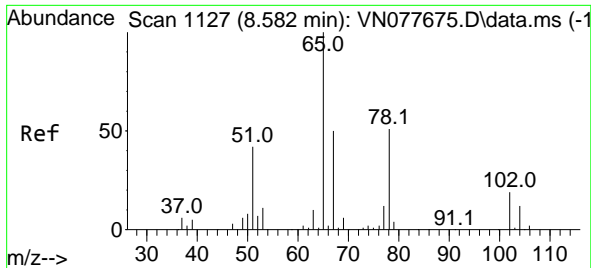
Tgt Ion	Resp	Lower	Upper
84	13181		
84	100		
49	93.8	79.7	119.5
51	32.6	25.2	37.8
86	65.7	53.3	79.9



#30  
 Chloroform  
 Concen: 1.981 ug/l  
 RT: 7.977 min Scan# 1024  
 Delta R.T. 0.006 min  
 Lab File: VN077926.D  
 Acq: 26 May 2023 14:41

Tgt Ion	Resp	Lower	Upper
83	19230		
83	100		
85	70.0	55.4	83.0

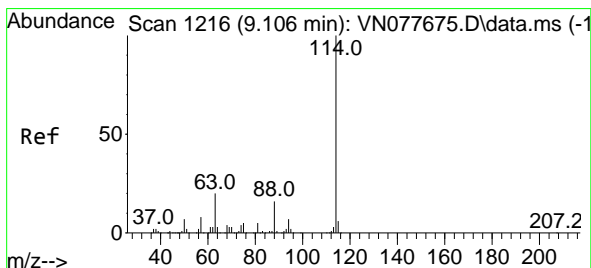
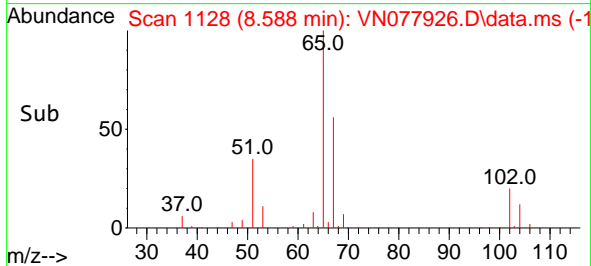
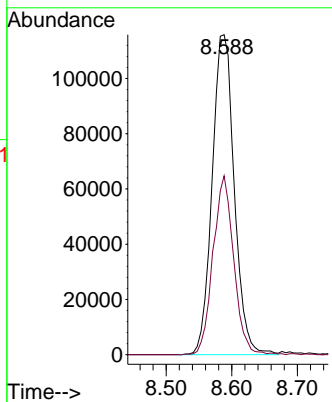
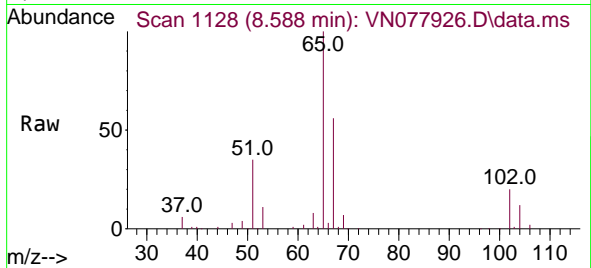




#33  
 1,2-Dichloroethane-d4  
 Concen: 45.550 ug/l  
 RT: 8.588 min Scan# 1127  
 Delta R.T. 0.006 min  
 Lab File: VN077926.D  
 Acq: 26 May 2023 14:41

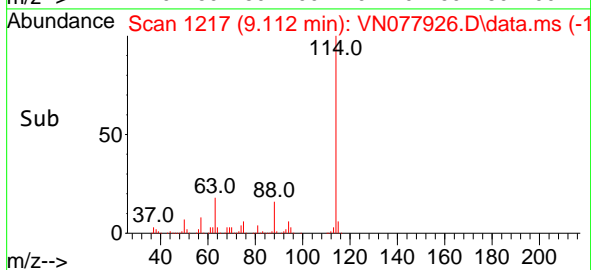
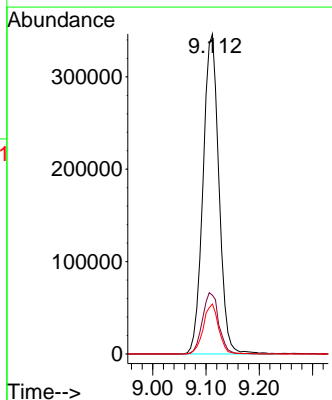
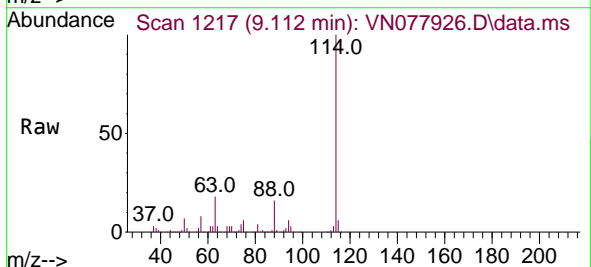
Instrument : MSVOA\_N  
 ClientSampleId : 001-002-003-3

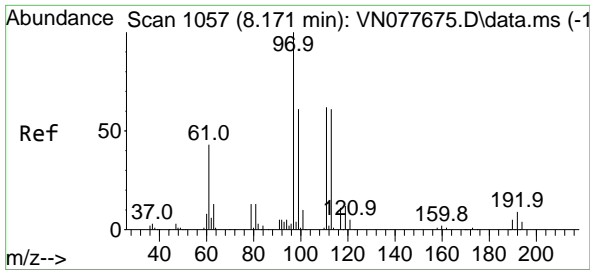
Tgt Ion: 65 Resp: 271081  
 Ion Ratio Lower Upper  
 65 100  
 67 52.3 0.0 106.6



#34  
 1,4-Difluorobenzene  
 Concen: 50.000 ug/l  
 RT: 9.112 min Scan# 1217  
 Delta R.T. 0.006 min  
 Lab File: VN077926.D  
 Acq: 26 May 2023 14:41

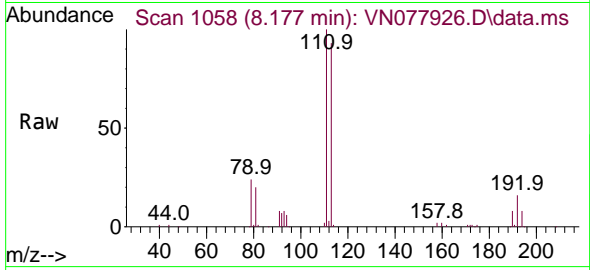
Tgt Ion: 114 Resp: 716655  
 Ion Ratio Lower Upper  
 114 100  
 63 18.4 0.0 36.4  
 88 15.6 0.0 30.6



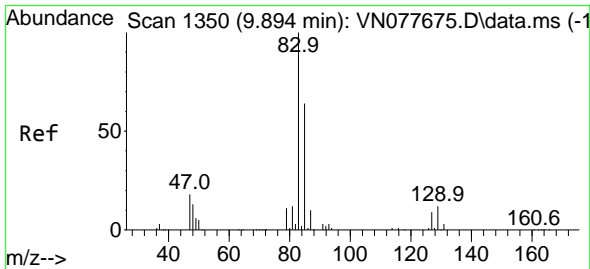
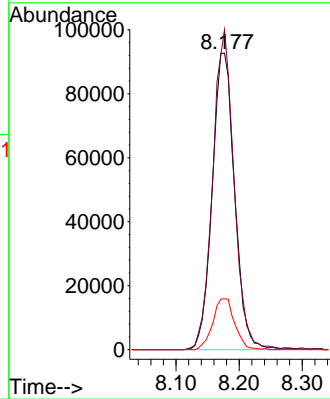
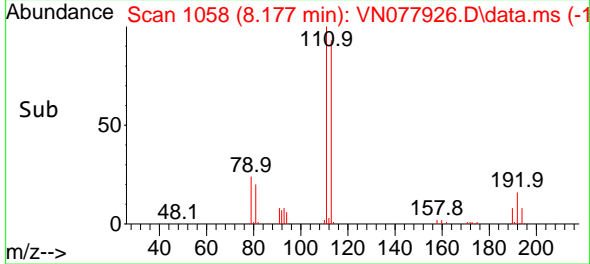


#35  
 Dibromofluoromethane  
 Concen: 48.870 ug/l  
 RT: 8.177 min Scan# 1058  
 Delta R.T. 0.006 min  
 Lab File: VN077926.D  
 Acq: 26 May 2023 14:41

Instrument : MSVOA\_N  
 ClientSampleId : 001-002-003-3

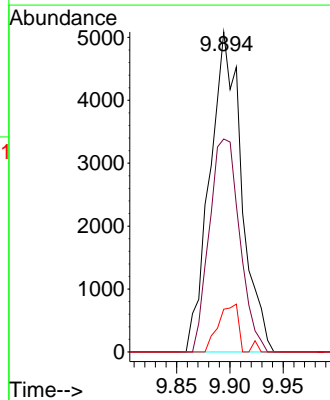
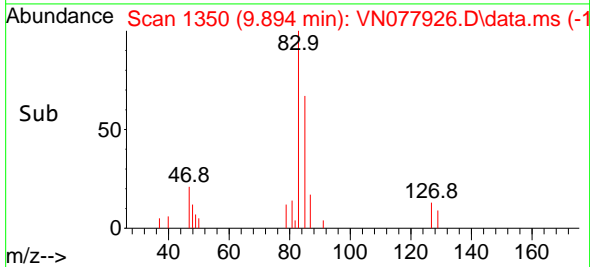
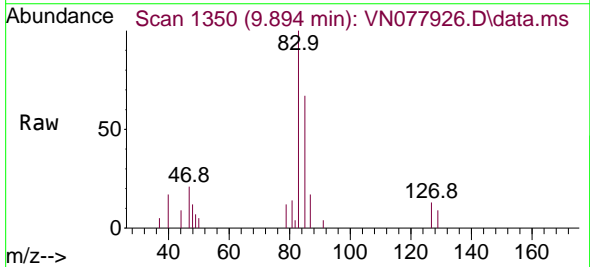


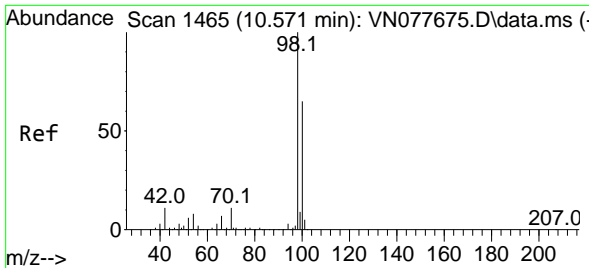
Tgt Ion:113 Resp: 228379  
 Ion Ratio Lower Upper  
 113 100  
 111 102.8 82.6 123.8  
 192 16.9 12.7 19.1



#47  
 Bromodichloromethane  
 Concen: 1.499 ug/l  
 RT: 9.894 min Scan# 1350  
 Delta R.T. 0.000 min  
 Lab File: VN077926.D  
 Acq: 26 May 2023 14:41

Tgt Ion: 83 Resp: 10566  
 Ion Ratio Lower Upper  
 83 100  
 85 66.5 49.6 74.4  
 127 13.3 7.0 10.6#

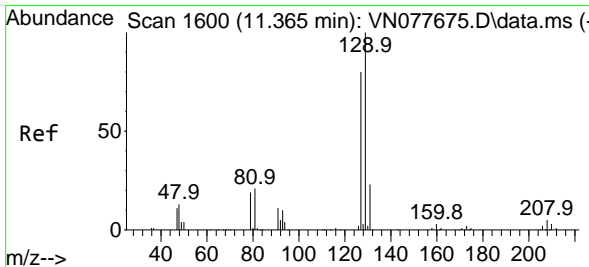
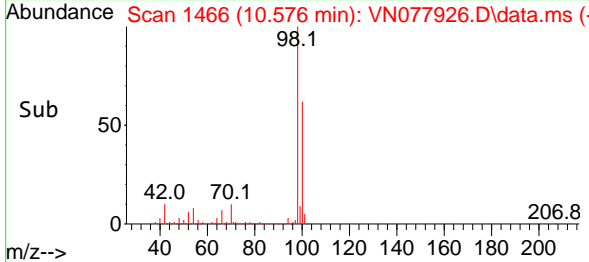
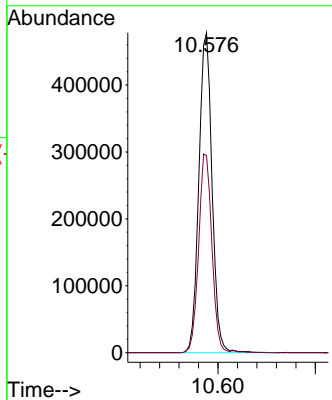
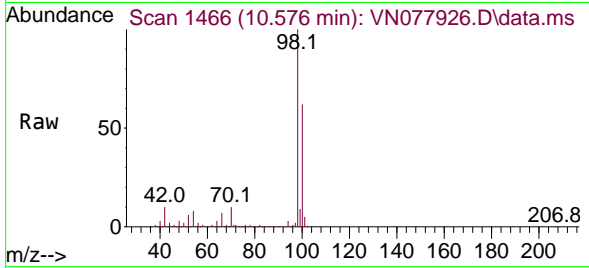




#50  
 Toluene-d8  
 Concen: 50.092 ug/l  
 RT: 10.576 min Scan# 1465  
 Delta R.T. 0.005 min  
 Lab File: VN077926.D  
 Acq: 26 May 2023 14:41

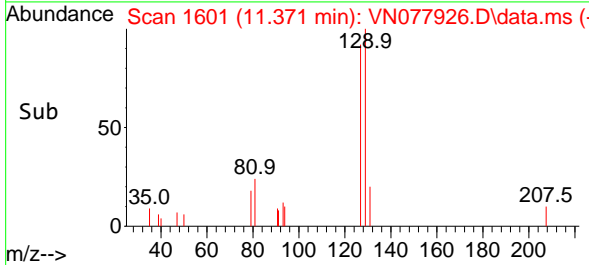
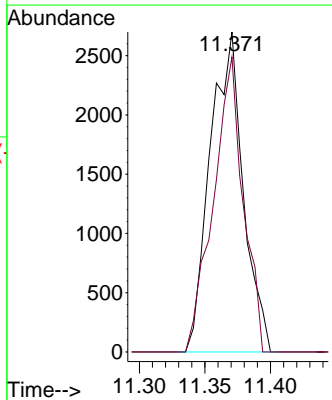
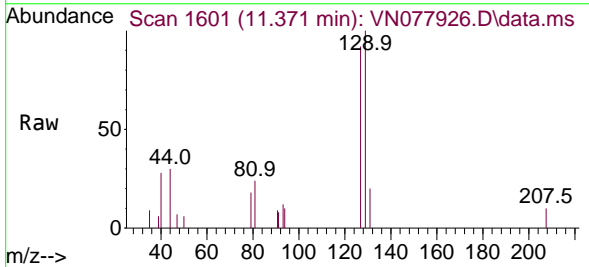
**Instrument :** MSVOA\_N  
**ClientSampleId :** 001-002-003-3

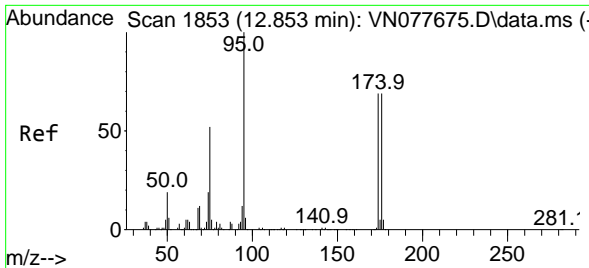
Tgt Ion: 98 Resp: 901028  
 Ion Ratio Lower Upper  
 98 100  
 100 62.6 52.0 78.0



#60  
 Dibromochloromethane  
 Concen: 0.918 ug/l  
 RT: 11.371 min Scan# 1601  
 Delta R.T. 0.006 min  
 Lab File: VN077926.D  
 Acq: 26 May 2023 14:41

Tgt Ion: 129 Resp: 4725  
 Ion Ratio Lower Upper  
 129 100  
 127 83.3 38.6 116.0



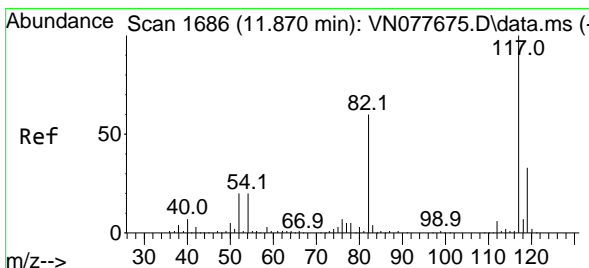
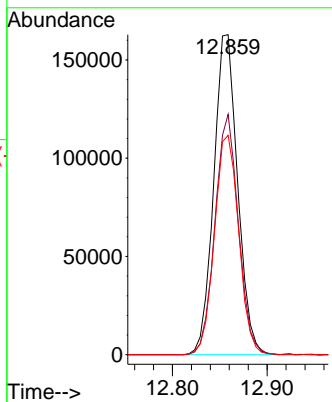
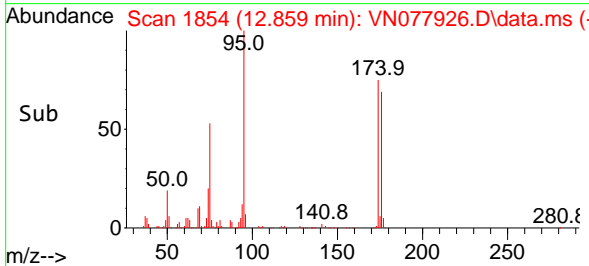
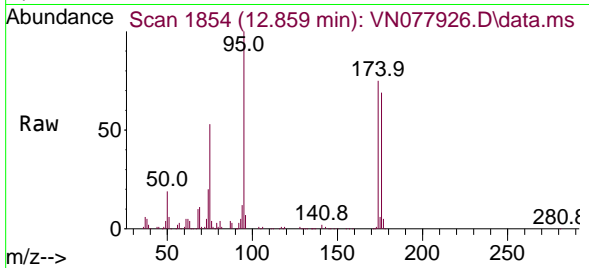


#62  
 4-Bromofluorobenzene  
 Concen: 44.969 ug/l  
 RT: 12.859 min Scan# 1854  
 Delta R.T. 0.006 min  
 Lab File: VN077926.D  
 Acq: 26 May 2023 14:41

Instrument : MSVOA\_N  
 ClientSampleId : 001-002-003-3

Tgt Ion: 95 Resp: 285679

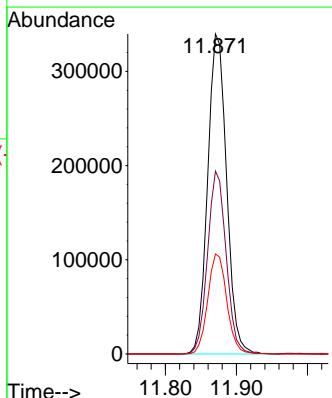
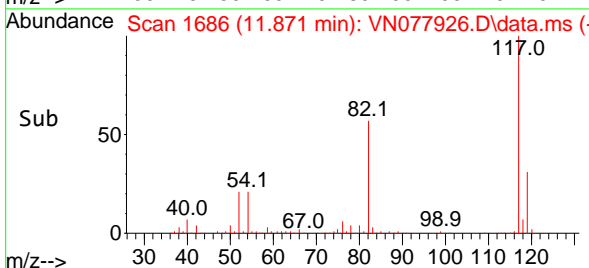
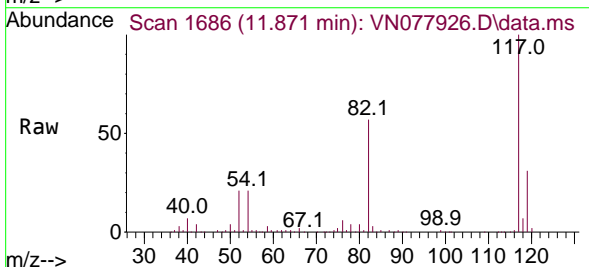
Ion	Ratio	Lower	Upper
95	100		
174	73.5	0.0	143.8
176	69.5	0.0	135.8



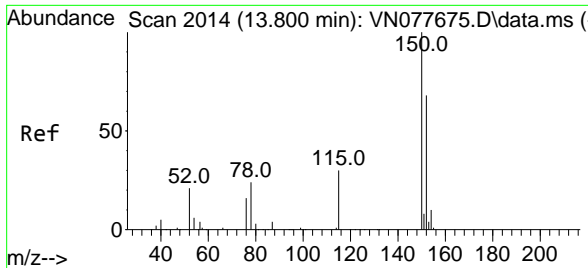
#63  
 Chlorobenzene-d5  
 Concen: 50.000 ug/l  
 RT: 11.871 min Scan# 1686  
 Delta R.T. 0.001 min  
 Lab File: VN077926.D  
 Acq: 26 May 2023 14:41

Tgt Ion: 117 Resp: 627331

Ion	Ratio	Lower	Upper
117	100		
82	57.2	44.0	66.0
119	31.2	25.6	38.4

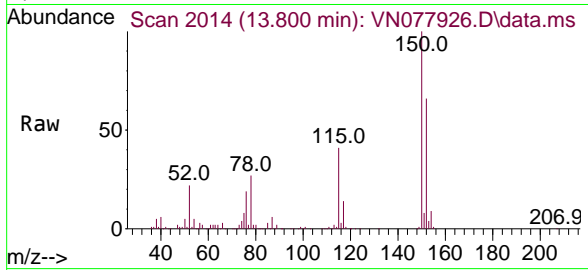






#72  
 1,4-Dichlorobenzene-d4  
 Concen: 50.000 ug/l  
 RT: 13.800 min Scan# 20  
 Delta R.T. -0.000 min  
 Lab File: VN077926.D  
 Acq: 26 May 2023 14:41

Instrument :  
 MSVOA\_N  
 ClientSampleId :  
 001-002-003-3



Tgt Ion:152 Resp: 200469

Ion	Ratio	Lower	Upper
152	100		
115	62.0	32.3	96.8
150	154.5	0.0	355.8

