

Data Path : Z:\voasrv\HPCHEM1\MSVOA_N\Data\VN052824\
 Data File : VN082344.D
 Acq On : 28 May 2024 14:05
 Operator : JC\MD
 Sample : P2562-01RE
 Misc : 5.0mL/MSVOA_N/WATER
 ALS Vial : 9 Sample Multiplier: 1

Instrument :
 MSVOA_N
 ClientSampleId :
 FIELD-BLANK

Quant Time: May 29 06:49:59 2024
 Quant Method : Z:\voasrv\HPCHEM1\MSVOA_N\methods\82N051524W.M
 Quant Title : SW846 8260
 QLast Update : Thu May 16 05:21:06 2024
 Response via : Initial Calibration

Compound	R.T.	QIon	Response	Conc	Units	Dev(Min)

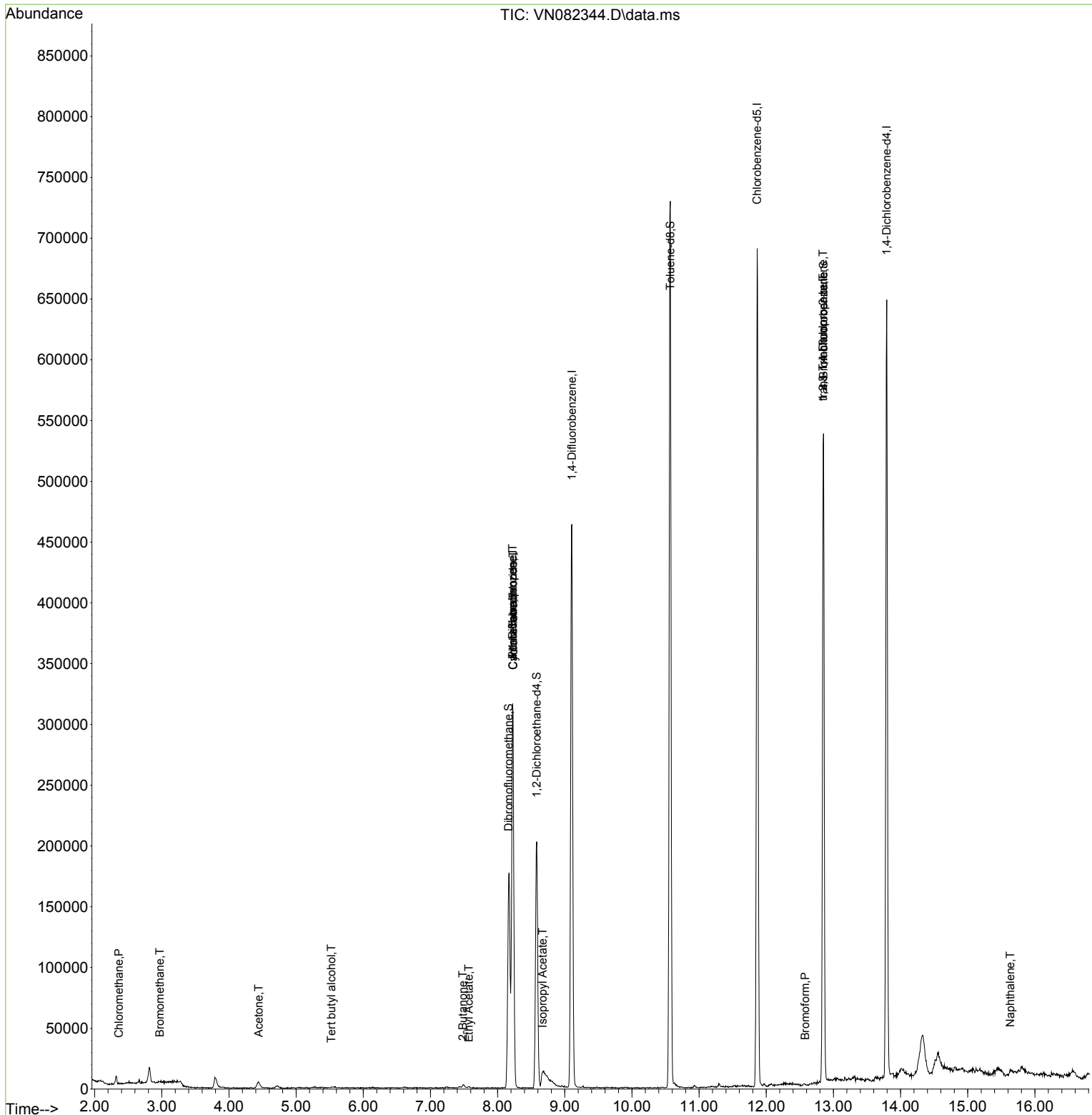
Internal Standards						
1) Pentafluorobenzene	8.224	168	221171	50.000	ug/l	0.00
34) 1,4-Difluorobenzene	9.106	114	386826	50.000	ug/l	0.00
63) Chlorobenzene-d5	11.865	117	366210	50.000	ug/l	0.00
72) 1,4-Dichlorobenzene-d4	13.794	152	160039	50.000	ug/l	0.00
System Monitoring Compounds						
33) 1,2-Dichloroethane-d4	8.582	65	170026	48.685	ug/l	0.00
Spiked Amount	50.000	Range 74 - 125	Recovery	=	97.380%	
35) Dibromofluoromethane	8.165	113	123512	51.905	ug/l	0.00
Spiked Amount	50.000	Range 75 - 124	Recovery	=	103.820%	
50) Toluene-d8	10.570	98	485837	53.253	ug/l	0.00
Spiked Amount	50.000	Range 86 - 113	Recovery	=	106.500%	
62) 4-Bromofluorobenzene	12.853	95	175884	54.014	ug/l	0.00
Spiked Amount	50.000	Range 64 - 133	Recovery	=	108.020%	
Target Compounds						
						Qvalue
3) Chloromethane	2.359	50	1249	0.346	ug/l #	82
5) Bromomethane	2.971	94	1165	0.597	ug/l #	78
11) Tert butyl alcohol	5.524	59	411	0.733	ug/l #	71
16) Acetone	4.441	43	10183	7.108	ug/l	94
25) 2-Butanone	7.482	43	4287	1.974	ug/l #	76
31) Cyclohexane	8.229	56	6239	1.119	ug/l #	57
36) 1,1-Dichloropropene	8.224	75	19493	4.884	ug/l #	49
37) Ethyl Acetate	7.571	43	2172	0.486	ug/l #	71
38) Carbon Tetrachloride	8.229	117	24684	6.101	ug/l #	16
43) Isopropyl Acetate	8.671	43	9578	1.210	ug/l #	52
71) Bromoform	12.582	173	140	0.766	ug/l #	28
76) 1,2,3-Trichloropropane	12.847	75	103729	30.794	ug/l #	1
81) trans-1,4-Dichloro-2-b...	12.847	75	103729	72.027	ug/l #	13
95) Naphthalene	15.635	128	2945	0.323	ug/l	97

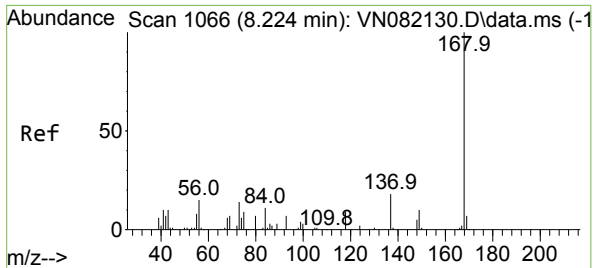
(#) = qualifier out of range (m) = manual integration (+) = signals summed

Data Path : Z:\voasrv\HPCHEM1\MSVOA_N\Data\VN052824\
 Data File : VN082344.D
 Acq On : 28 May 2024 14:05
 Operator : JC\MD
 Sample : P2562-01RE
 Misc : 5.0mL/MSVOA_N/WATER
 ALS Vial : 9 Sample Multiplier: 1

Instrument :
 MSVOA_N
 ClientSampleId :
 FIELD-BLANK

Quant Time: May 29 06:49:59 2024
 Quant Method : Z:\voasrv\HPCHEM1\MSVOA_N\methods\82N051524W.M
 Quant Title : SW846 8260
 QLast Update : Thu May 16 05:21:06 2024
 Response via : Initial Calibration

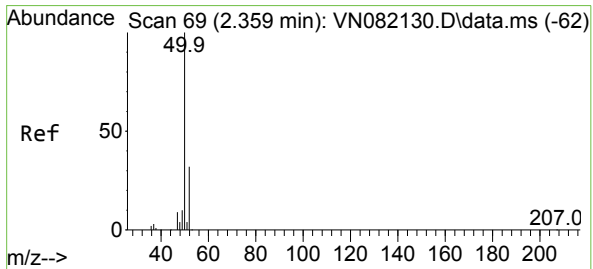
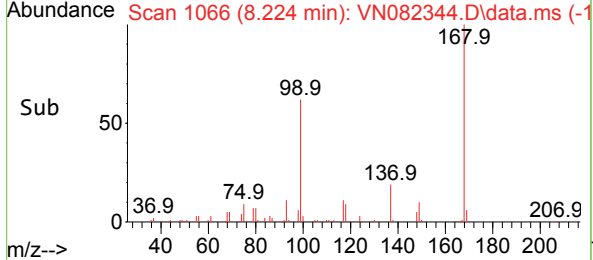
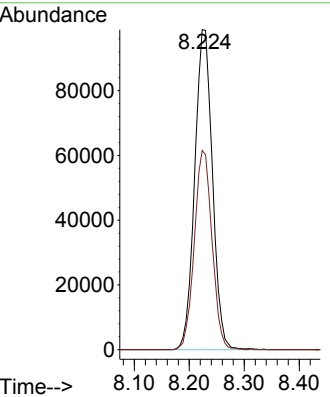
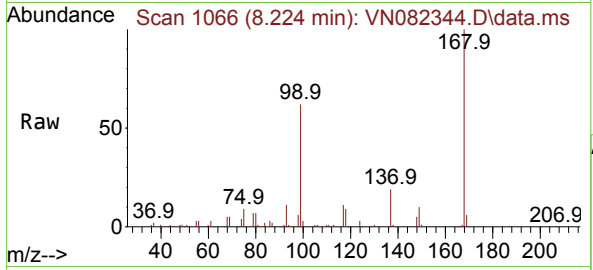




#1
 Pentafluorobenzene
 Concen: 50.000 ug/l
 RT: 8.224 min Scan# 10
 Delta R.T. -0.000 min
 Lab File: VN082344.D
 Acq: 28 May 2024 14:05

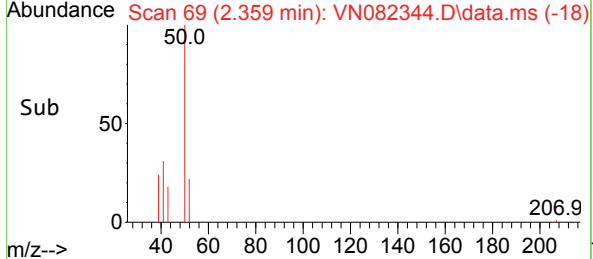
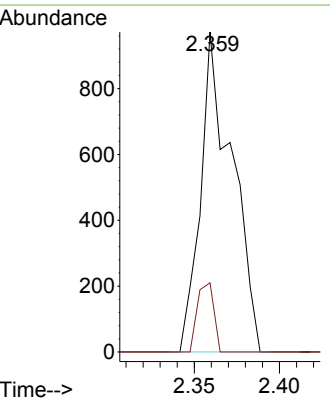
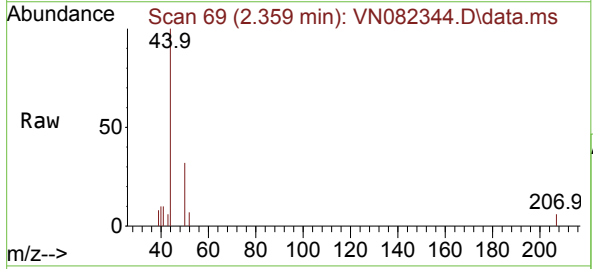
Instrument : MSVOA_N
 ClientSampleId : FIELD-BLANK

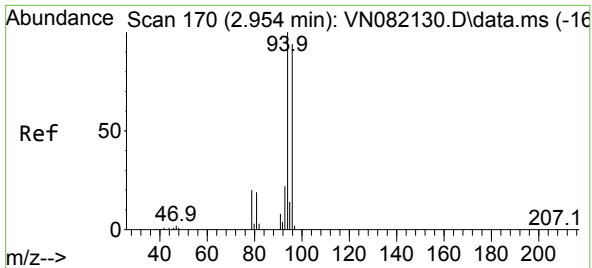
Tgt Ion:168 Resp: 221171
 Ion Ratio Lower Upper
 168 100
 99 62.2 48.2 72.4



#3
 Chloromethane
 Concen: 0.346 ug/l
 RT: 2.359 min Scan# 69
 Delta R.T. -0.000 min
 Lab File: VN082344.D
 Acq: 28 May 2024 14:05

Tgt Ion: 50 Resp: 1249
 Ion Ratio Lower Upper
 50 100
 52 21.6 25.5 38.3#

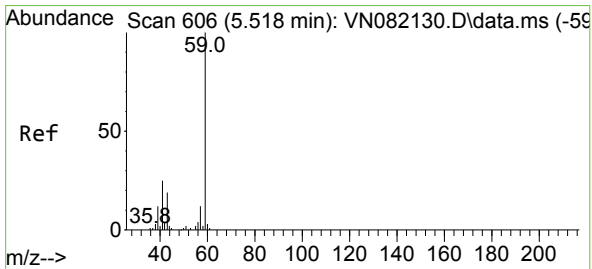
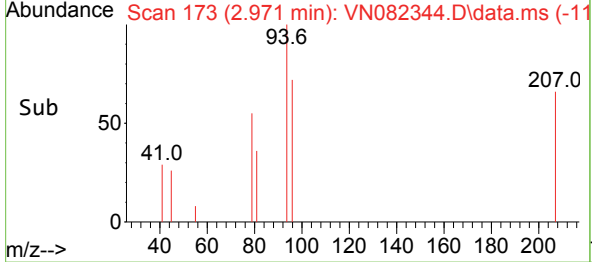
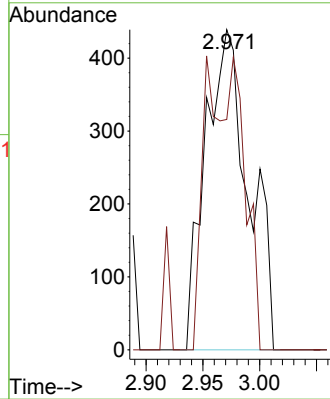
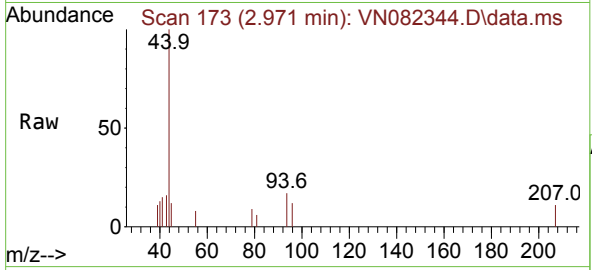




#5
 Bromomethane
 Concen: 0.597 ug/l
 RT: 2.971 min Scan# 11
 Delta R.T. 0.017 min
 Lab File: VN082344.D
 Acq: 28 May 2024 14:05

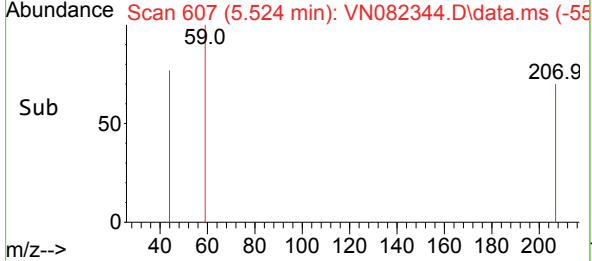
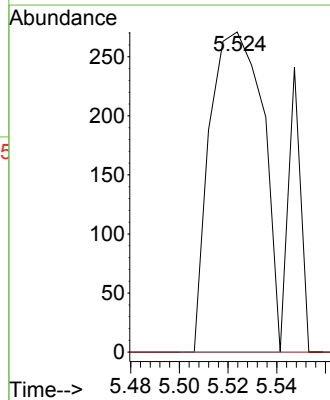
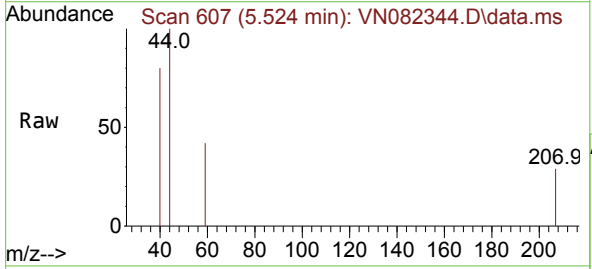
Instrument : MSVOA_N
 ClientSampleId : FIELD-BLANK

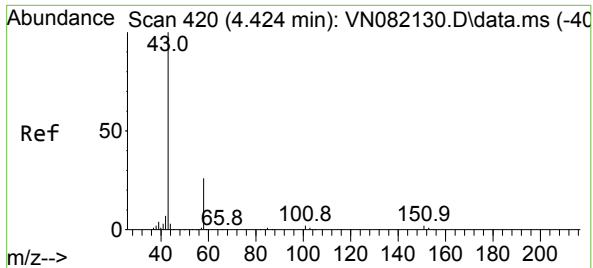
Tgt Ion: 94 Resp: 1165
 Ion Ratio Lower Upper
 94 100
 96 72.0 74.8 112.2#



#11
 Tert butyl alcohol
 Concen: 0.733 ug/l
 RT: 5.524 min Scan# 607
 Delta R.T. 0.006 min
 Lab File: VN082344.D
 Acq: 28 May 2024 14:05

Tgt Ion: 59 Resp: 411
 Ion Ratio Lower Upper
 59 100
 57 0.0 8.9 13.3#

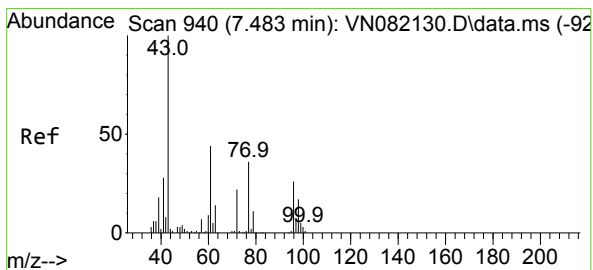
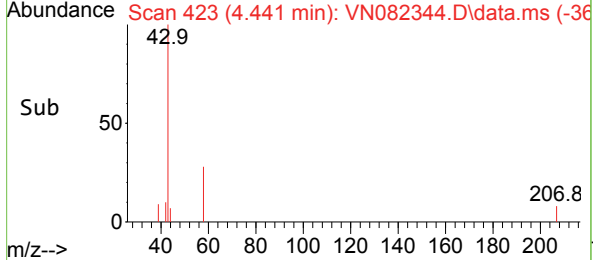
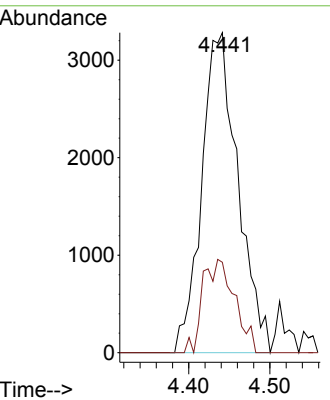
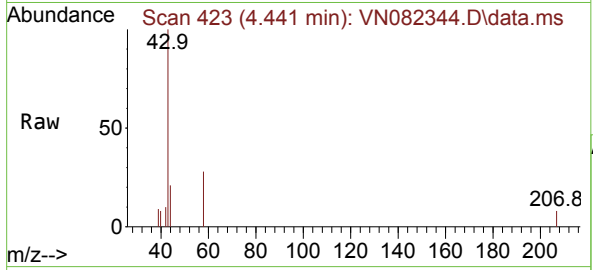




#16
 Acetone
 Concen: 7.108 ug/l
 RT: 4.441 min Scan# 41
 Delta R.T. 0.017 min
 Lab File: VN082344.D
 Acq: 28 May 2024 14:05

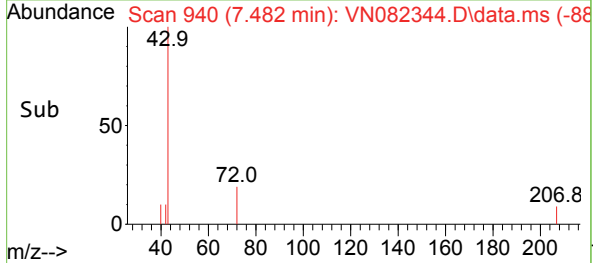
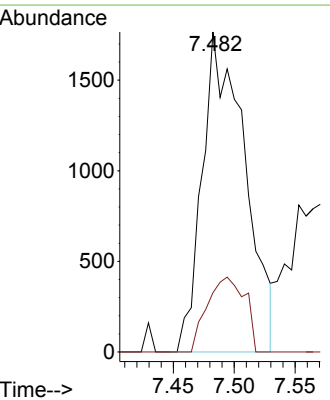
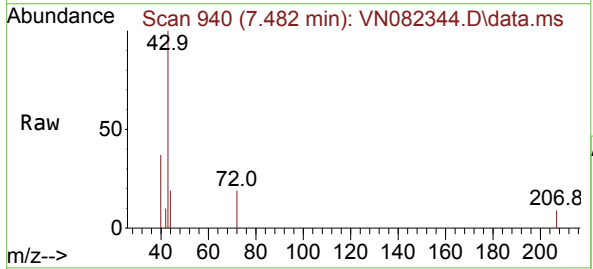
Instrument : MSVOA_N
 ClientSampleId : FIELD-BLANK

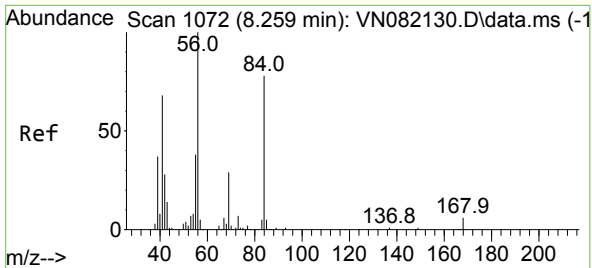
Tgt Ion: 43 Resp: 10183
 Ion Ratio Lower Upper
 43 100
 58 28.2 25.2 37.8



#25
 2-Butanone
 Concen: 1.974 ug/l
 RT: 7.482 min Scan# 940
 Delta R.T. -0.000 min
 Lab File: VN082344.D
 Acq: 28 May 2024 14:05

Tgt Ion: 43 Resp: 4287
 Ion Ratio Lower Upper
 43 100
 72 18.5 25.3 37.9#



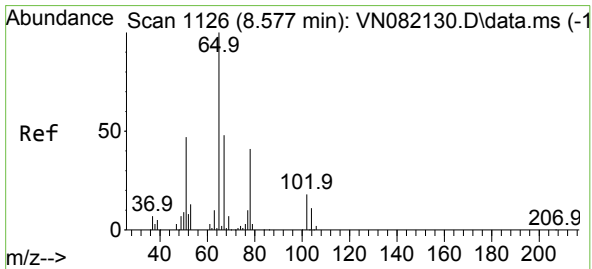
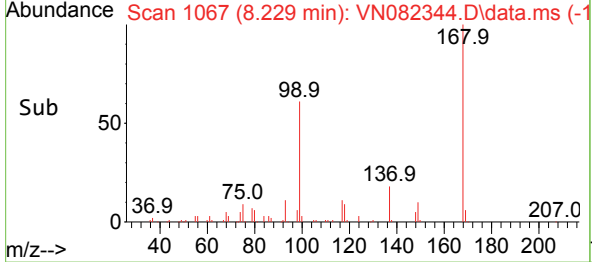
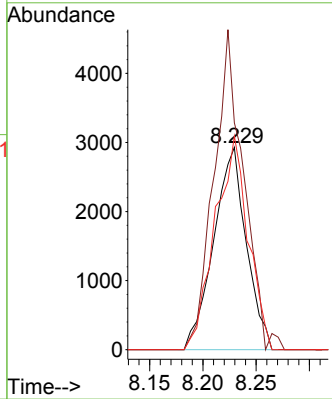
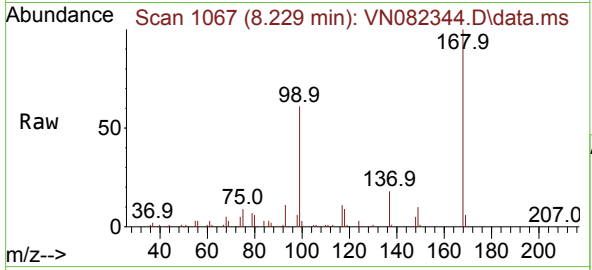


#31
 Cyclohexane
 Concen: 1.119 ug/l
 RT: 8.229 min Scan# 1072
 Delta R.T. -0.030 min
 Lab File: VN082344.D
 Acq: 28 May 2024 14:05

Instrument : MSVOA_N
 ClientSampleId : FIELD-BLANK

Tgt Ion: 56 Resp: 6239

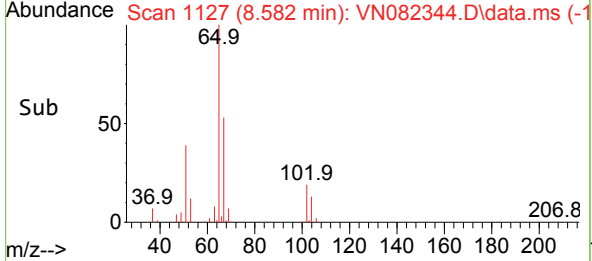
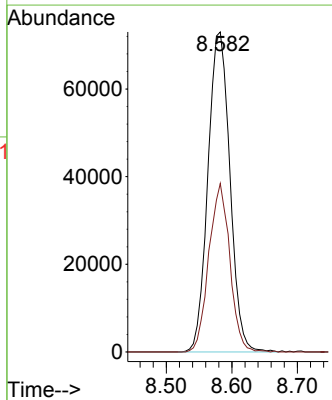
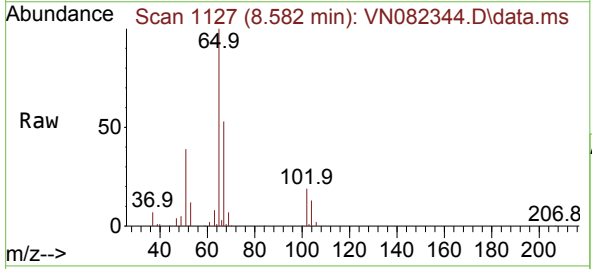
Ion	Ratio	Lower	Upper
56	100		
69	112.2	24.4	36.6#
84	105.6	77.0	115.4

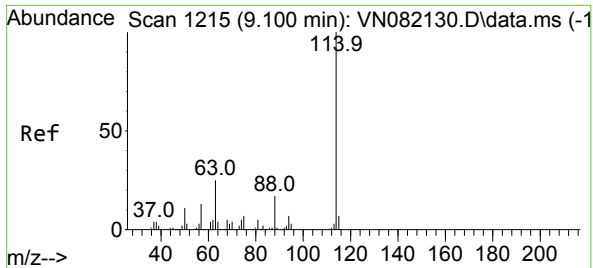


#33
 1,2-Dichloroethane-d4
 Concen: 48.685 ug/l
 RT: 8.582 min Scan# 1127
 Delta R.T. 0.006 min
 Lab File: VN082344.D
 Acq: 28 May 2024 14:05

Tgt Ion: 65 Resp: 170026

Ion	Ratio	Lower	Upper
65	100		
67	50.2	0.0	103.0



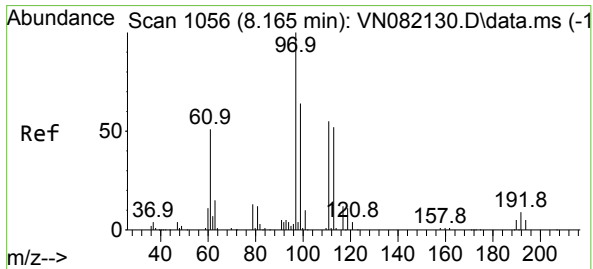
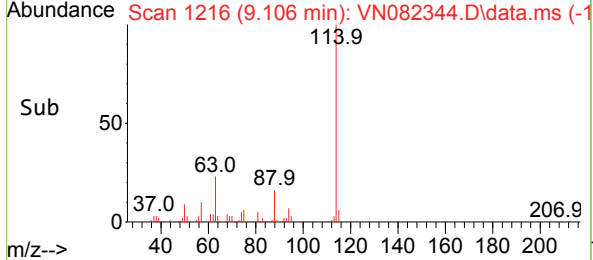
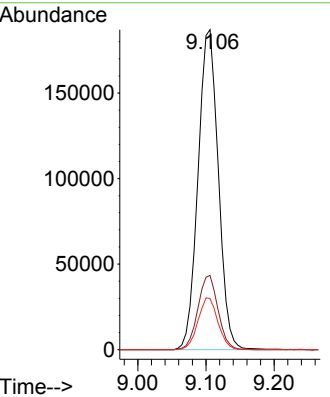
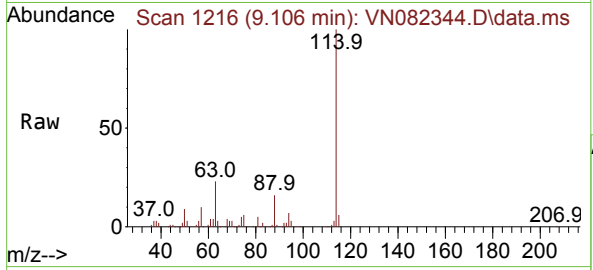


#34
 1,4-Difluorobenzene
 Concen: 50.000 ug/l
 RT: 9.106 min Scan# 11
 Delta R.T. 0.006 min
 Lab File: VN082344.D
 Acq: 28 May 2024 14:05

Instrument : MSVOA_N
 ClientSampleId : FIELD-BLANK

Tgt Ion:114 Resp: 386826

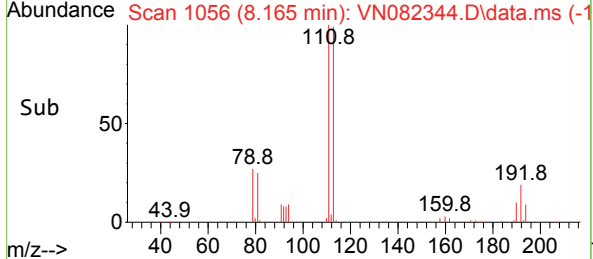
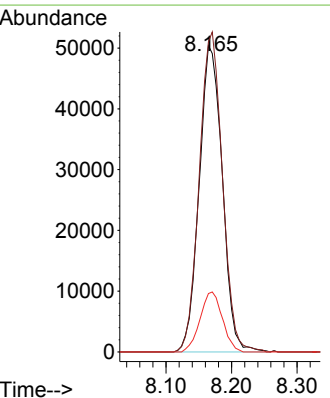
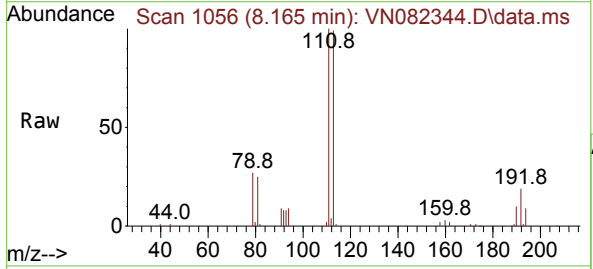
Ion	Ratio	Lower	Upper
114	100		
63	23.2	0.0	41.0
88	15.9	0.0	31.4

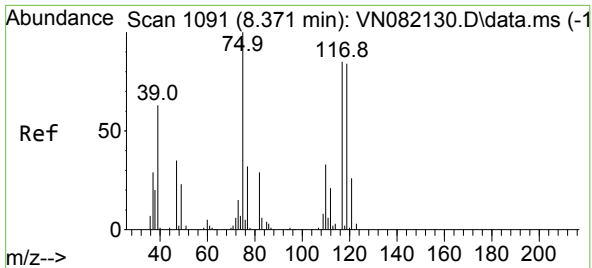


#35
 Dibromofluoromethane
 Concen: 51.905 ug/l
 RT: 8.165 min Scan# 1056
 Delta R.T. -0.000 min
 Lab File: VN082344.D
 Acq: 28 May 2024 14:05

Tgt Ion:113 Resp: 123512

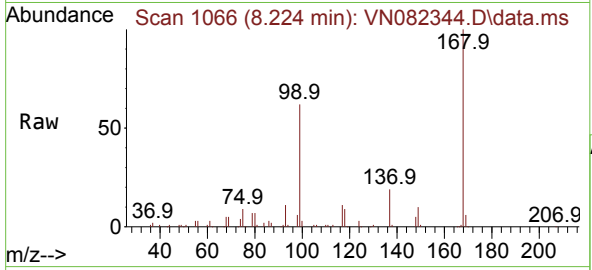
Ion	Ratio	Lower	Upper
113	100		
111	104.3	83.4	125.2
192	18.9	14.0	21.0



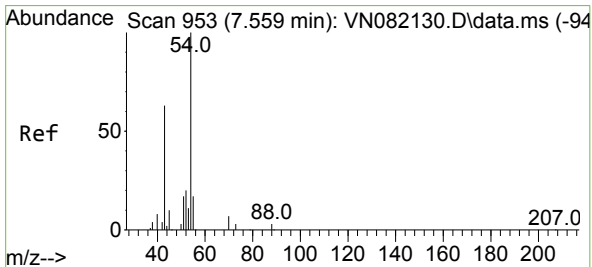
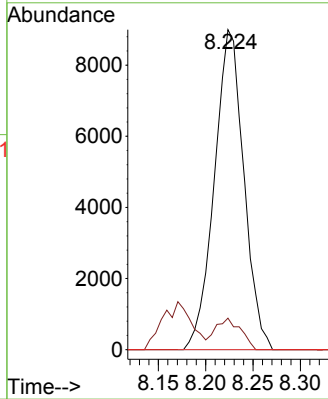
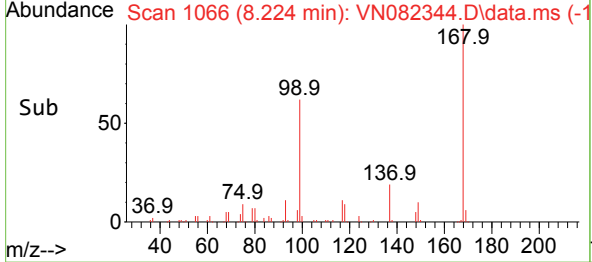


#36
 1,1-Dichloropropene
 Concen: 4.884 ug/l
 RT: 8.224 min Scan# 1066
 Delta R.T. -0.147 min
 Lab File: VN082344.D
 Acq: 28 May 2024 14:05

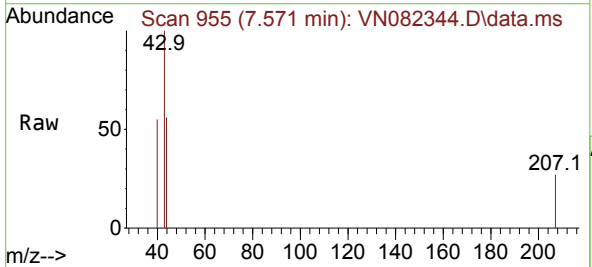
Instrument : MSVOA_N
 ClientSampleId : FIELD-BLANK



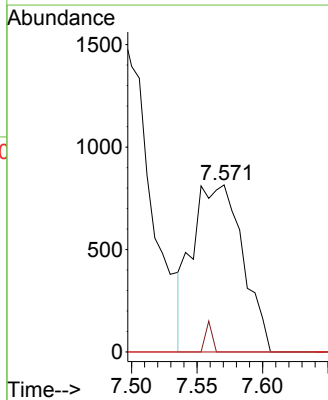
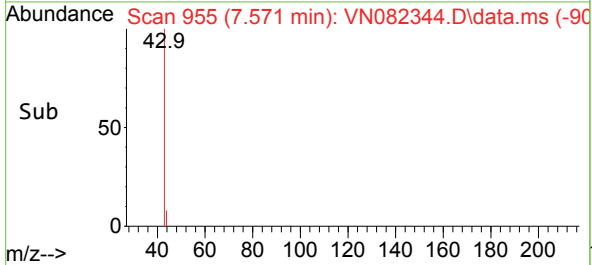
Tgt Ion	Resp	Lower	Upper
75	19493		
75	100		
110	8.5	17.8	53.5#
77	0.0	25.0	37.4#

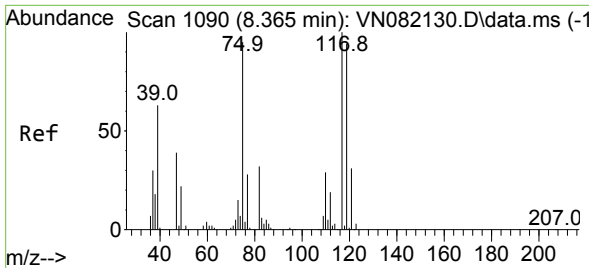


#37
 Ethyl Acetate
 Concen: 0.486 ug/l
 RT: 7.571 min Scan# 955
 Delta R.T. 0.012 min
 Lab File: VN082344.D
 Acq: 28 May 2024 14:05



Tgt Ion	Resp	Lower	Upper
43	2172		
43	100		
61	2.4	11.3	16.9#
70	0.0	8.7	13.1#



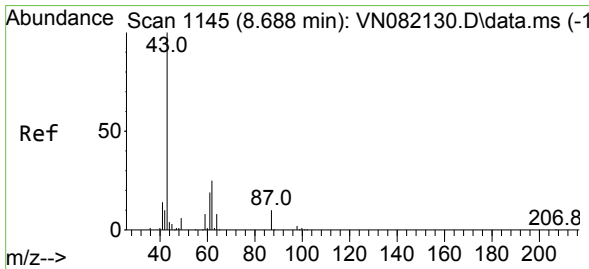
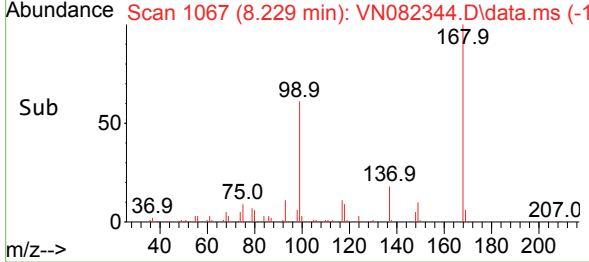
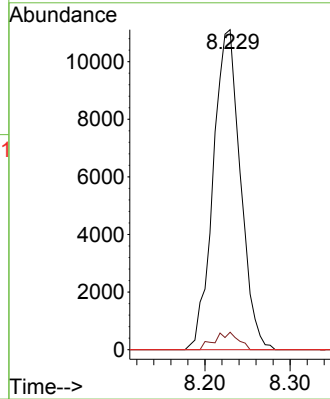
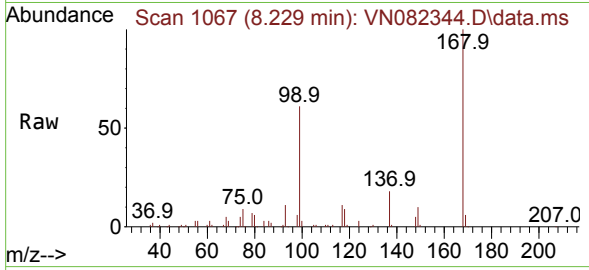


#38
 Carbon Tetrachloride
 Concen: 6.101 ug/l
 RT: 8.229 min Scan# 1067
 Delta R.T. -0.135 min
 Lab File: VN082344.D
 Acq: 28 May 2024 14:05

Instrument : MSVOA_N
 ClientSampleId : FIELD-BLANK

Tgt Ion:117 Resp: 24684

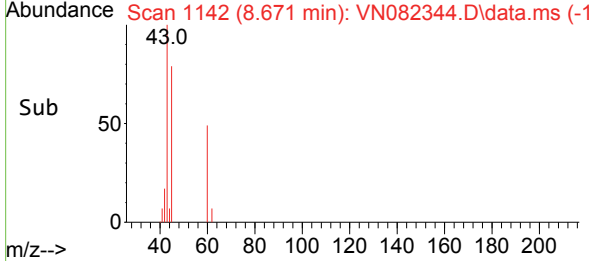
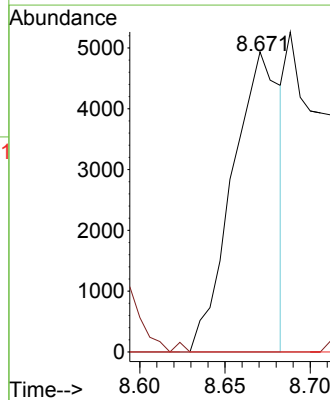
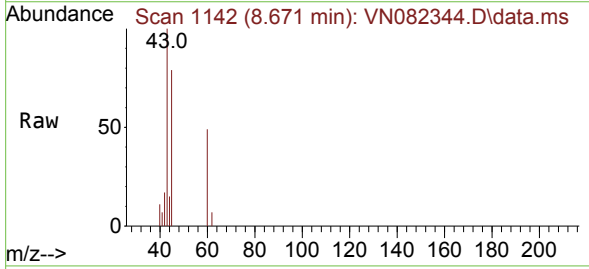
Ion	Ratio	Lower	Upper
117	100		
119	5.4	76.5	114.7#
121	0.0	23.9	35.9#

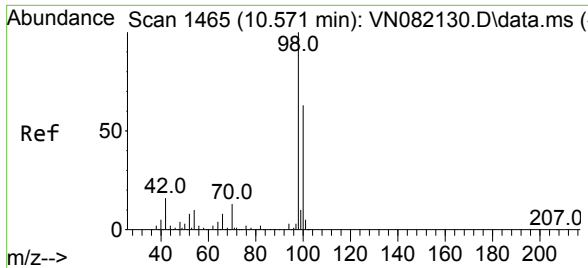


#43
 Isopropyl Acetate
 Concen: 1.210 ug/l
 RT: 8.671 min Scan# 1142
 Delta R.T. -0.018 min
 Lab File: VN082344.D
 Acq: 28 May 2024 14:05

Tgt Ion: 43 Resp: 9578

Ion	Ratio	Lower	Upper
43	100		
61	0.0	22.8	34.2#
87	0.0	12.0	18.0#

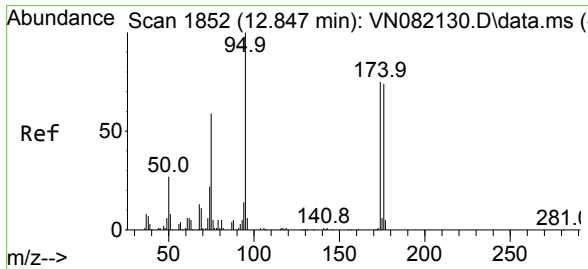
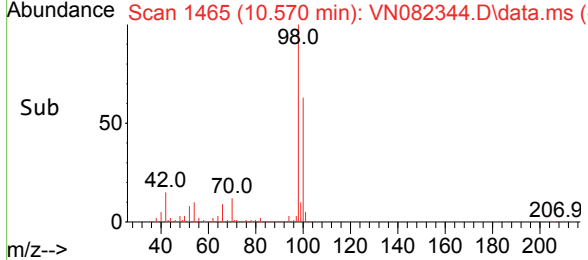
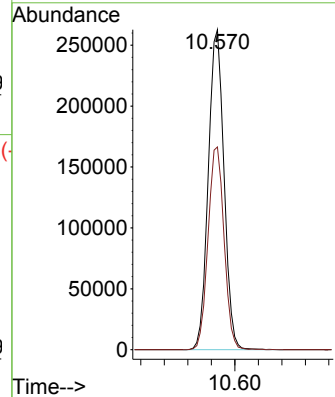
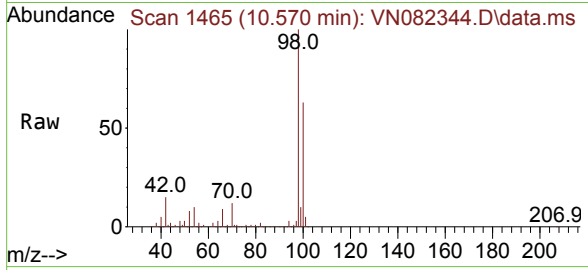




#50
 Toluene-d8
 Concen: 53.253 ug/l
 RT: 10.570 min Scan# 1465
 Delta R.T. -0.000 min
 Lab File: VN082344.D
 Acq: 28 May 2024 14:05

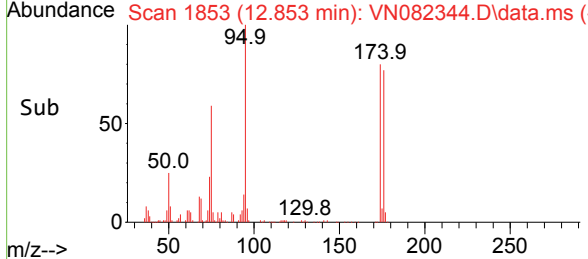
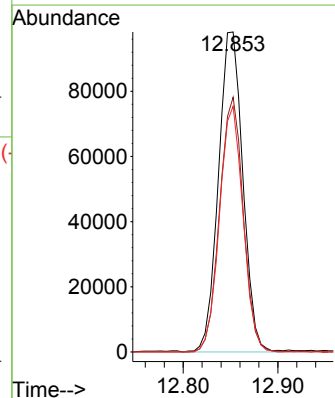
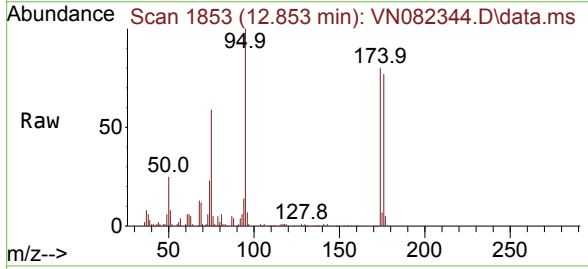
Instrument : MSVOA_N
 ClientSampleId : FIELD-BLANK

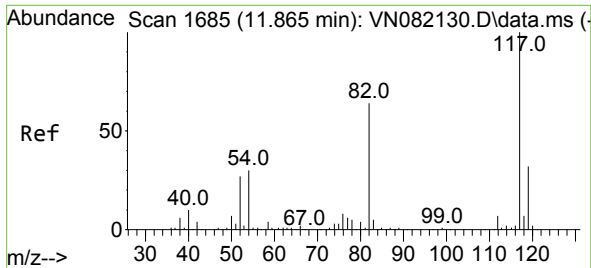
Tgt Ion: 98 Resp: 485837
 Ion Ratio Lower Upper
 98 100
 100 64.6 51.8 77.6



#62
 4-Bromofluorobenzene
 Concen: 54.014 ug/l
 RT: 12.853 min Scan# 1853
 Delta R.T. 0.006 min
 Lab File: VN082344.D
 Acq: 28 May 2024 14:05

Tgt Ion: 95 Resp: 175884
 Ion Ratio Lower Upper
 95 100
 174 77.0 0.0 160.6
 176 73.9 0.0 152.8





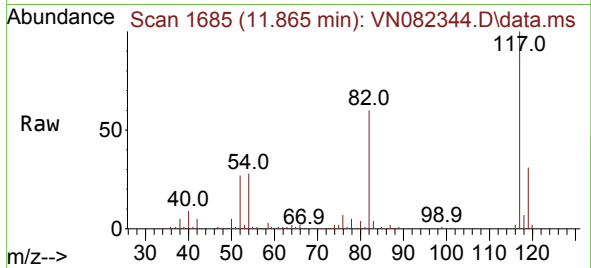
#63
 Chlorobenzene-d5
 Concen: 50.000 ug/l
 RT: 11.865 min Scan# 117
 Delta R.T. -0.000 min
 Lab File: VN082344.D
 Acq: 28 May 2024 14:05

Instrument :

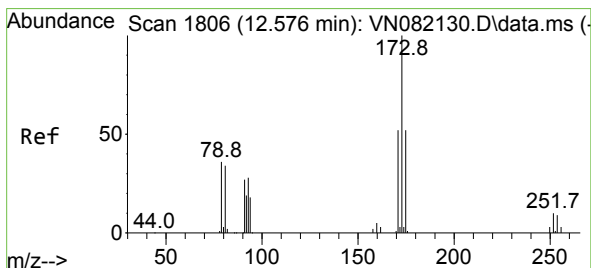
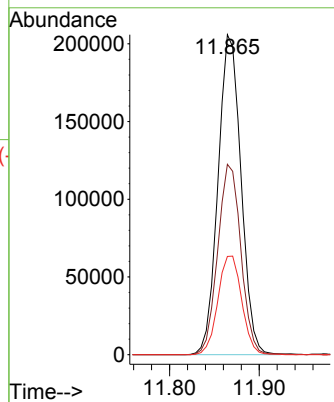
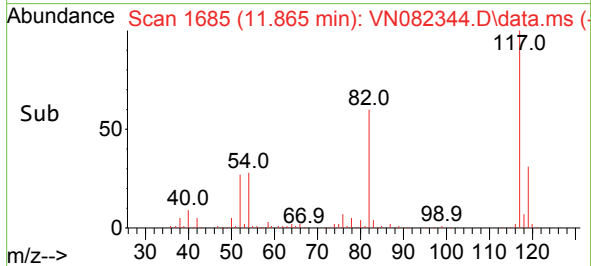
MSVOA_N

ClientSampleId :

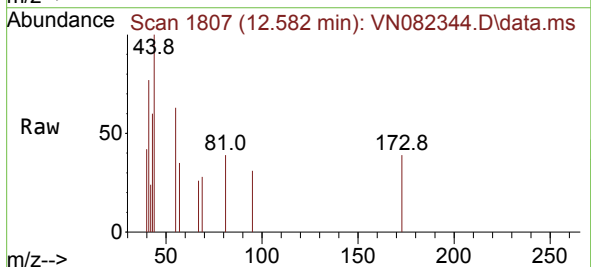
FIELD-BLANK



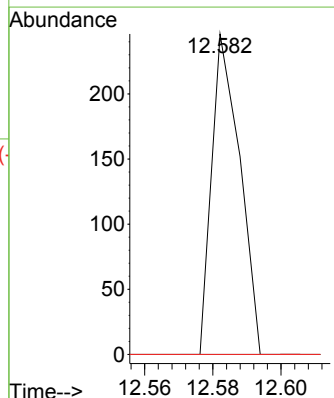
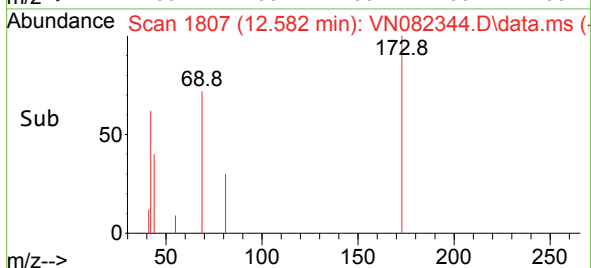
Tgt Ion:117 Resp: 366210
 Ion Ratio Lower Upper
 117 100
 82 59.5 44.6 66.8
 119 30.7 25.9 38.9

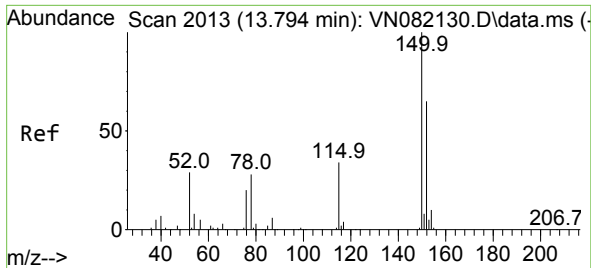


#71
 Bromoform
 Concen: 0.766 ug/l
 RT: 12.582 min Scan# 1807
 Delta R.T. 0.006 min
 Lab File: VN082344.D
 Acq: 28 May 2024 14:05



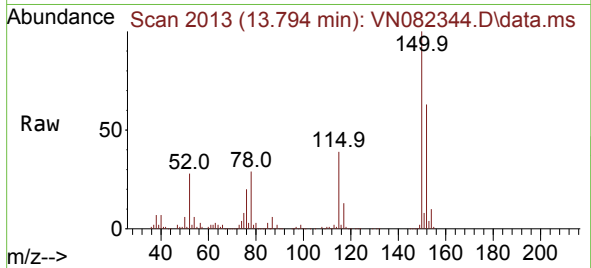
Tgt Ion:173 Resp: 140
 Ion Ratio Lower Upper
 173 100
 175 0.0 24.6 74.0#
 254 0.0 0.0 0.0



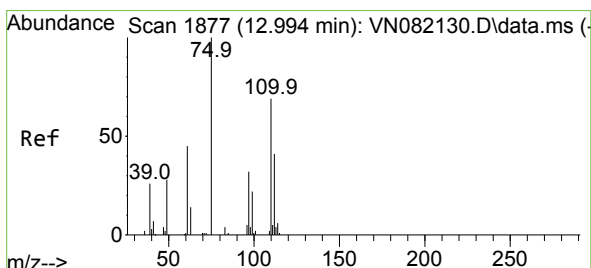
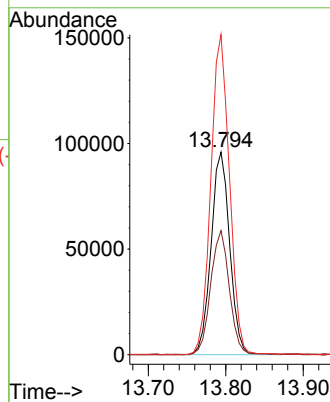
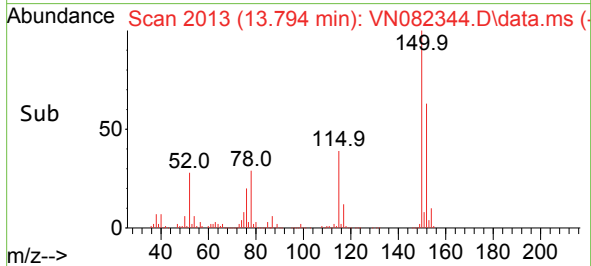


#72
 1,4-Dichlorobenzene-d4
 Concen: 50.000 ug/l
 RT: 13.794 min Scan# 2013
 Delta R.T. -0.000 min
 Lab File: VN082344.D
 Acq: 28 May 2024 14:05

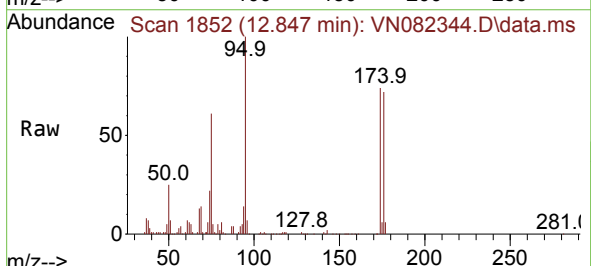
Instrument : MSVOA_N
 ClientSampleId : FIELD-BLANK



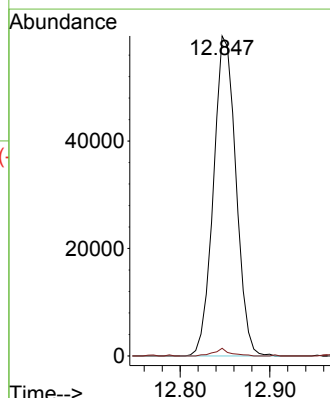
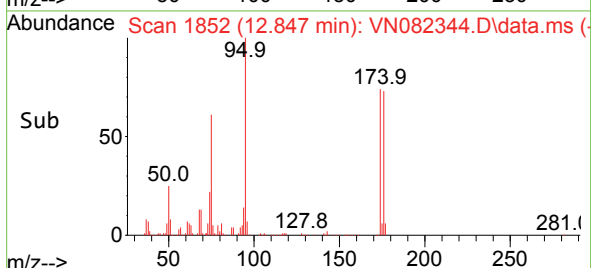
Tgt Ion:152 Resp: 160039
 Ion Ratio Lower Upper
 152 100
 115 60.8 30.4 91.3
 150 158.1 0.0 353.2

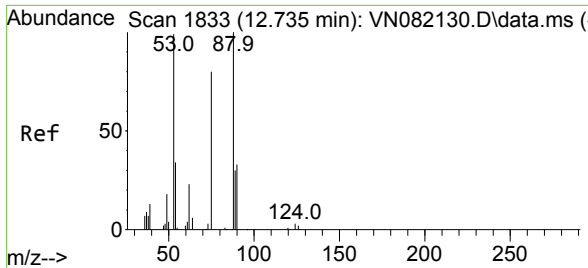


#76
 1,2,3-Trichloropropane
 Concen: 30.794 ug/l
 RT: 12.847 min Scan# 1852
 Delta R.T. -0.147 min
 Lab File: VN082344.D
 Acq: 28 May 2024 14:05



Tgt Ion: 75 Resp: 103729
 Ion Ratio Lower Upper
 75 100
 77 1.7 90.5 271.3#



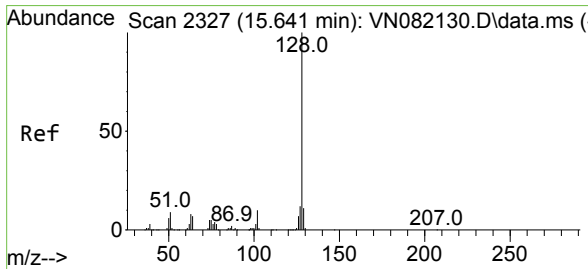
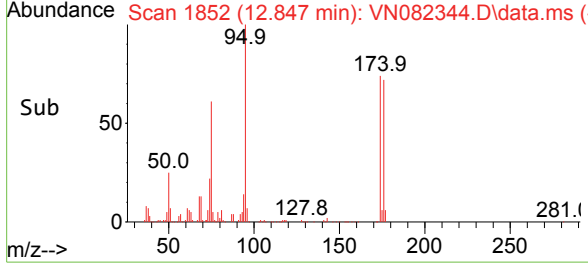
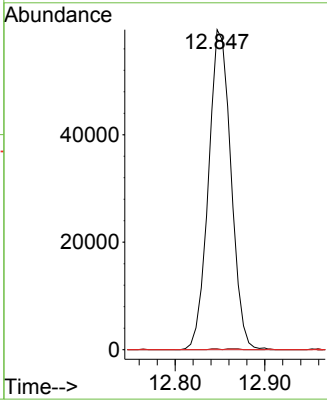
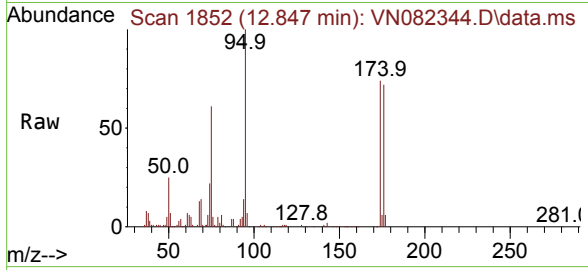


#81
 trans-1,4-Dichloro-2-butene
 Concen: 72.027 ug/l
 RT: 12.847 min Scan# 1833
 Delta R.T. 0.112 min
 Lab File: VN082344.D
 Acq: 28 May 2024 14:05

Instrument : MSVOA_N
 ClientSampleId : FIELD-BLANK

Tgt Ion: 75 Resp: 103729

Ion	Ratio	Lower	Upper
75	100		
53	0.1	72.9	109.3#
89	0.0	39.1	58.7#



#95
 Naphthalene
 Concen: 0.323 ug/l
 RT: 15.635 min Scan# 2326
 Delta R.T. -0.006 min
 Lab File: VN082344.D
 Acq: 28 May 2024 14:05

Tgt Ion: 128 Resp: 2945

Ion	Ratio	Lower	Upper
128	100		
127	10.9	10.1	15.1
129	10.5	8.9	13.3

