

Data Path : Z:\voasrv\HPCHEM1\MSVOA\_N\Data\VN052824\  
 Data File : VN082356.D  
 Acq On : 28 May 2024 18:56  
 Operator : JC\MD  
 Sample : P2609-03 50X  
 Misc : 5.0mL/MSVOA\_N/WATER  
 ALS Vial : 21 Sample Multiplier: 1

Instrument :  
 MSVOA\_N  
 ClientSampleId :  
 420

Integration Parameters: RTEINT.P

Integrator: RTE  
 Smoothing : ON Filtering: 5  
 Sampling : 1 Min Area: 3 % of largest Peak  
 Start Thrs: 0.2 Max Peaks: 100  
 Stop Thrs : 0 Peak Location: TOP

If leading or trailing edge < 100 prefer < Baseline drop else tangent >  
 Peak separation: 5

Method : Z:\voasrv\HPCHEM1\MSVOA\_N\methods\82N051524W.M  
 Title : SW846 8260

Signal : TIC: VN082356.D\data.ms

peak #	R.T. min	first scan	max scan	last scan	PK TY	peak height	corr. area	corr. % max.	% of total
1	2.812	138	146	151	rBV4	6846	14314	1.18%	0.221%
2	7.435	923	932	941	rBV2	13231	35109	2.90%	0.541%
3	8.171	1047	1057	1061	rBV	161779	378379	31.30%	5.831%
4	8.224	1061	1066	1079	rVB	273813	617720	51.10%	9.520%
5	8.582	1117	1127	1136	rBV	182294	419010	34.66%	6.457%
6	8.671	1136	1142	1144	rBV5	12179	24643	2.04%	0.380%
7	9.106	1207	1216	1228	rVB	422960	868159	71.81%	13.379%
8	10.571	1457	1465	1474	rBV	658864	1208933	100.00%	18.631%
9	11.865	1678	1685	1697	rBV	600278	1093948	90.49%	16.859%
10	12.853	1845	1853	1862	rBV	484770	834420	69.02%	12.859%
11	13.794	2006	2013	2024	rBV	578623	975994	80.73%	15.041%
12	15.594	2312	2319	2326	rVB2	9953	18220	1.51%	0.281%

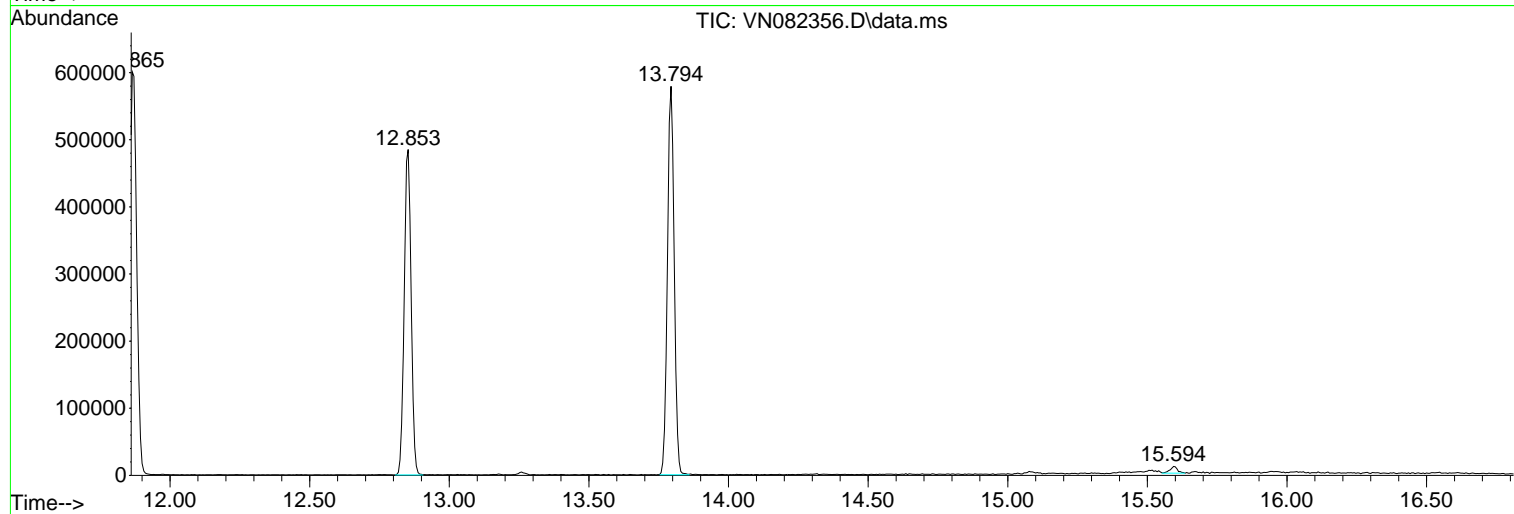
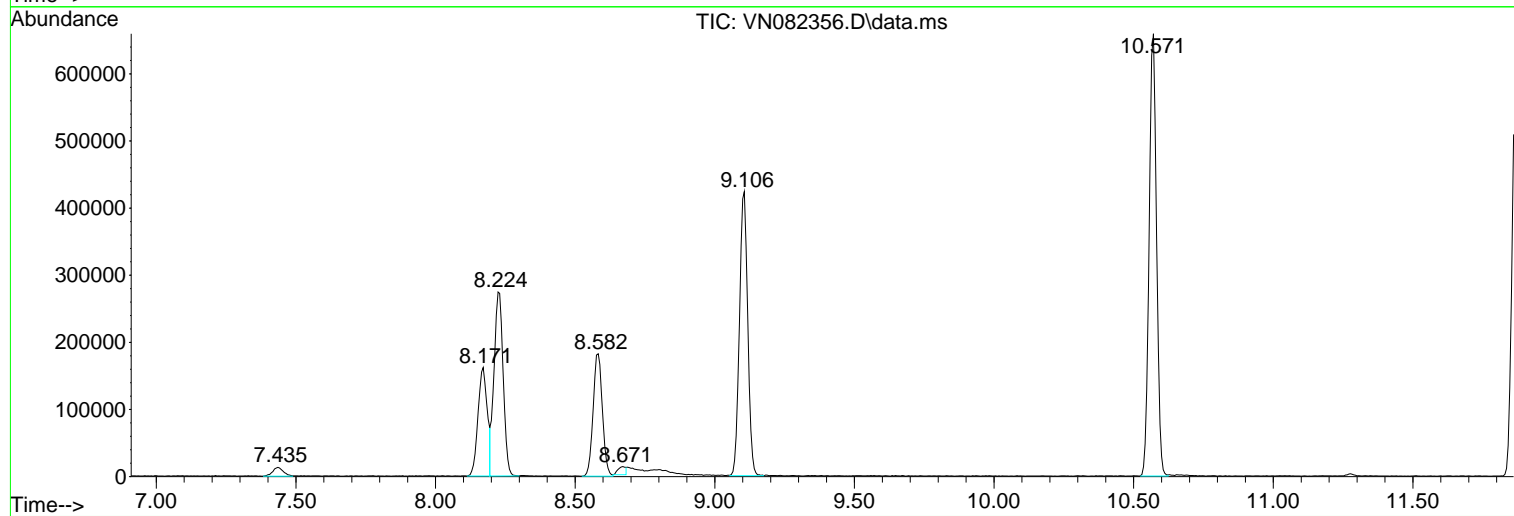
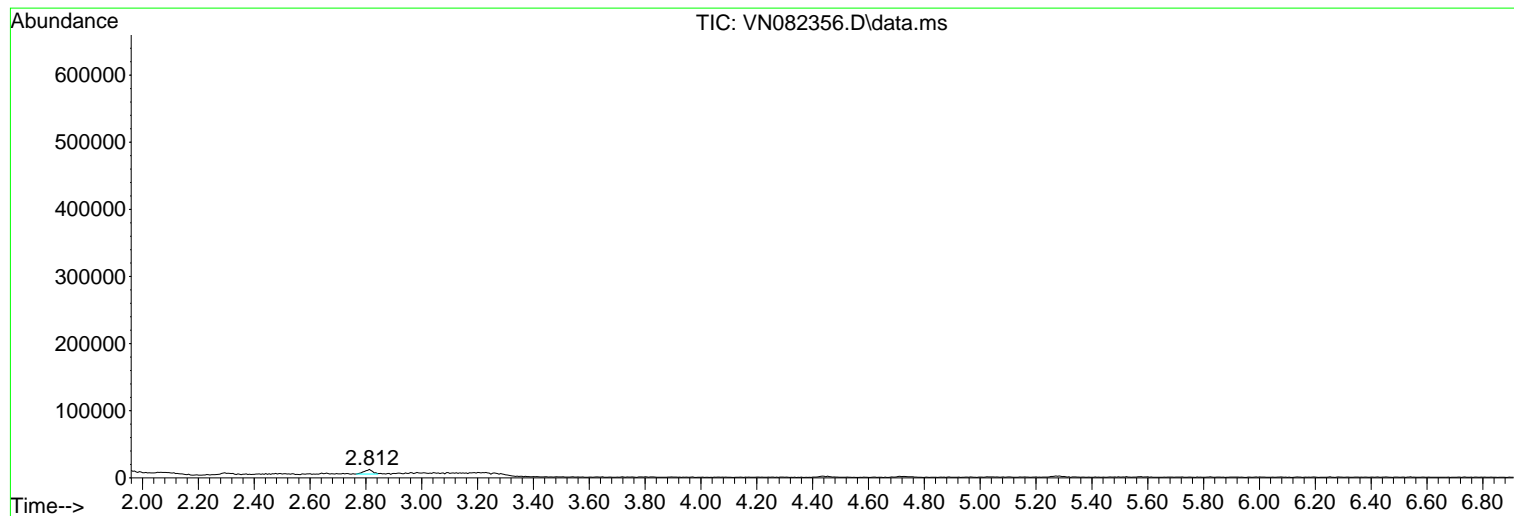
Sum of corrected areas: 6488849

Data Path : Z:\voasrv\HPCHEM1\MSVOA\_N\Data\VN052824\  
Data File : VN082356.D  
Acq On : 28 May 2024 18:56  
Operator : JC\MD  
Sample : P2609-03 50X  
Misc : 5.0mL/MSVOA\_N/WATER  
ALS Vial : 21 Sample Multiplier: 1

Instrument :  
MSVOA\_N  
ClientSampleId :  
420

Quant Method : Z:\voasrv\HPCHEM1\MSVOA\_N\methods\82N051524W.M  
Quant Title : SW846 8260

TIC Library : C:\Database\NIST20.L  
TIC Integration Parameters: LSCINT.P



Library Search Compound Report

Data Path : Z:\voasrv\HPCHEM1\MSVOA\_N\Data\VN052824\  
Data File : VN082356.D  
Acq On : 28 May 2024 18:56  
Operator : JC\MD  
Sample : P2609-03 50X  
Misc : 5.0mL/MSVOA\_N/WATER  
ALS Vial : 21 Sample Multiplier: 1

Instrument :  
MSVOA\_N  
ClientSampleId :  
420

Quant Method : Z:\voasrv\HPCHEM1\MSVOA\_N\methods\82N051524W.M  
Quant Title : SW846 8260

TIC Library : C:\Database\NIST20.L  
TIC Integration Parameters: LSCINT.P

No Library Search Compounds Detected

\*\*\*\*\*

Data Path : Z:\voasrv\HPCHEM1\MSVOA\_N\Data\VN052824\  
Data File : VN082356.D  
Acq On : 28 May 2024 18:56  
Operator : JC\MD  
Sample : P2609-03 50X  
Misc : 5.0mL/MSVOA\_N/WATER  
ALS Vial : 21 Sample Multiplier: 1

Instrument :  
MSVOA\_N  
ClientSampleId :  
420

Quant Method : Z:\voasrv\HPCHEM1\MSVOA\_N\methods\82N051524W.M  
Quant Title : SW846 8260

TIC Library : C:\Database\NIST20.L  
TIC Integration Parameters: LSCINT.P

TIC Top Hit name	RT	EstConc	Units	Response	--Internal Standard--			
					#	RT	Resp	Conc

---