

Data Path : Z:\voasrv\HPCHEM1\MSVOA_N\Data\VN052924\
 Data File : VN082369.D
 Acq On : 29 May 2024 14:40
 Operator : JC\MD
 Sample : P2636-01
 Misc : 5.0mL/MSVOA_N/WATER
 ALS Vial : 10 Sample Multiplier: 1

Instrument :
 MSVOA_N
 ClientSampleId :
 TOTE-COMP

Integration Parameters: RTEINT.P
 Integrator: RTE
 Smoothing : ON Filtering: 5
 Sampling : 1 Min Area: 3 % of largest Peak
 Start Thrs: 0.2 Max Peaks: 100
 Stop Thrs : 0 Peak Location: TOP

If leading or trailing edge < 100 prefer < Baseline drop else tangent >
 Peak separation: 5

Method : Z:\voasrv\HPCHEM1\MSVOA_N\methods\82N051524W.M
 Title : SW846 8260

Signal : TIC: VN082369.D\data.ms

peak #	R.T. min	first scan	max scan	last scan	PK TY	peak height	corr. area	corr. % max.	% of total
1	2.665	117	121	128	rVB	10551	17979	1.54%	0.289%
2	8.171	1044	1057	1061	rBV	152997	368614	31.65%	5.935%
3	8.224	1061	1066	1077	rVB	267733	591394	50.77%	9.522%
4	8.577	1118	1126	1141	rBV	176974	408204	35.05%	6.572%
5	9.100	1207	1215	1224	rBV	405637	827149	71.01%	13.318%
6	10.565	1456	1464	1473	rBV	626354	1164797	100.00%	18.754%
7	11.865	1676	1685	1693	rBV	590919	1047147	89.90%	16.860%
8	11.941	1693	1698	1709	rVB	25636	43065	3.70%	0.693%
9	12.853	1844	1853	1862	rBV	456446	787932	67.65%	12.686%
10	13.794	2005	2013	2021	rBV	545653	937086	80.45%	15.088%
11	16.429	2452	2461	2467	rBV8	6810	17550	1.51%	0.283%

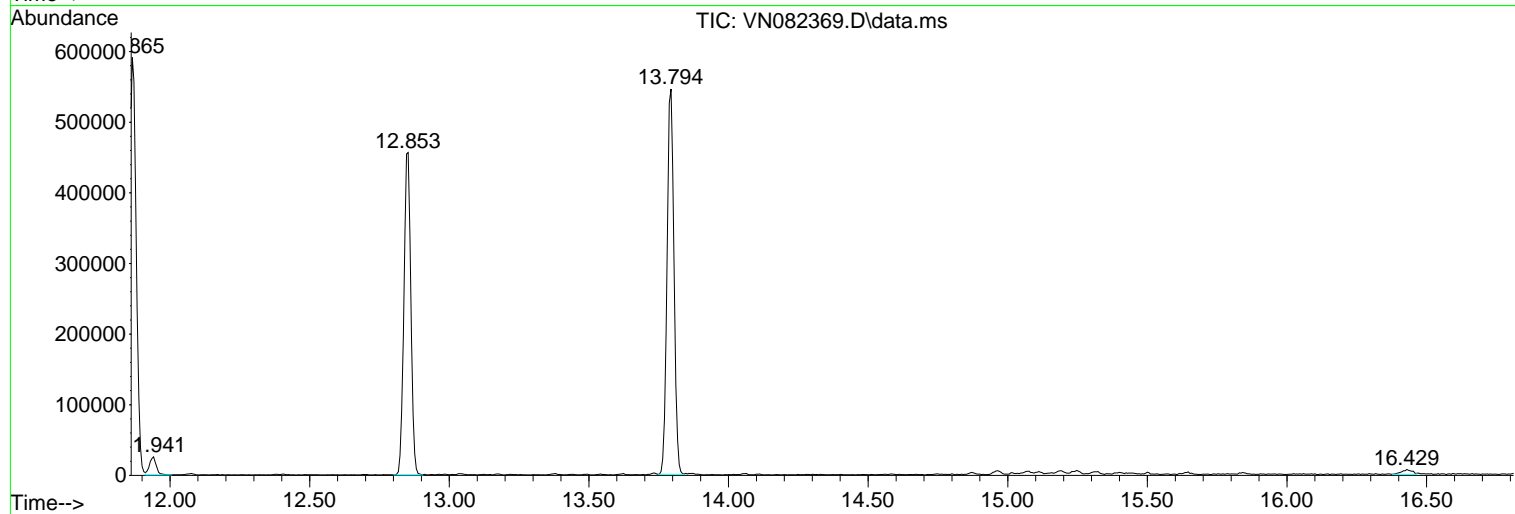
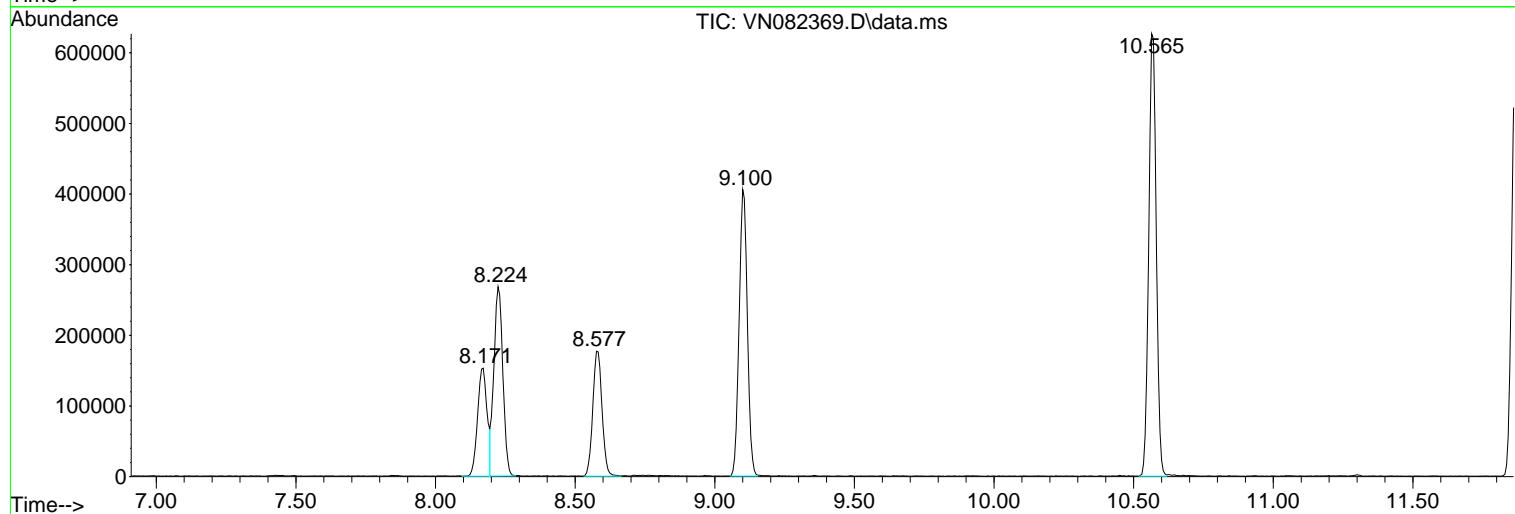
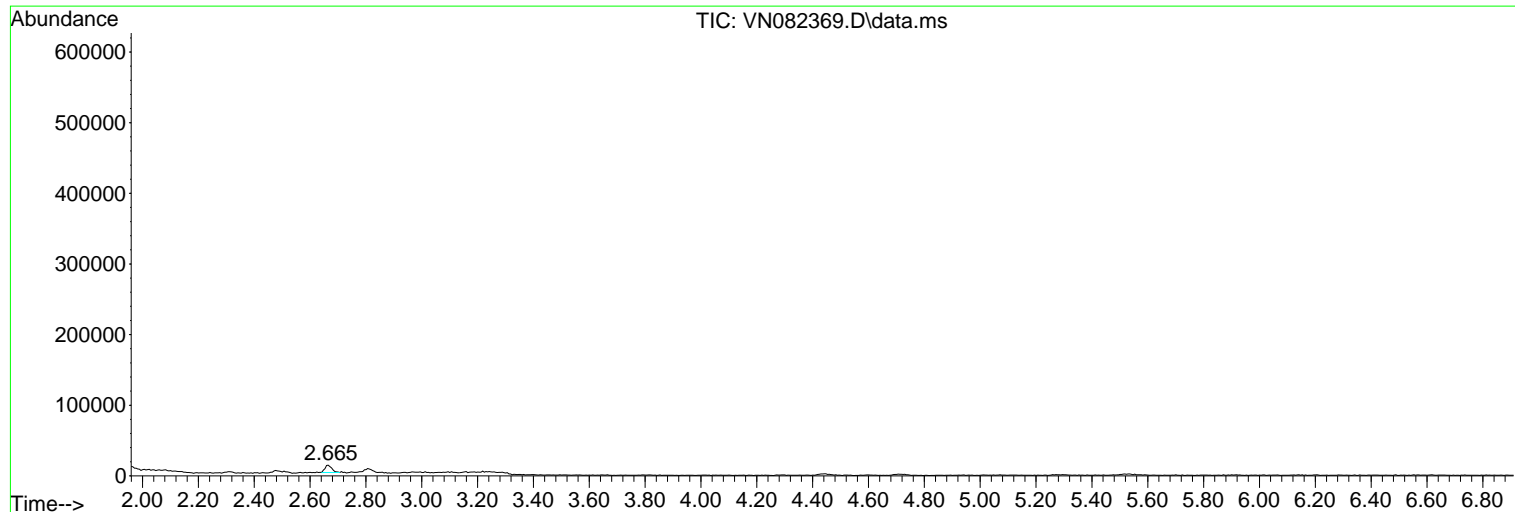
Sum of corrected areas: 6210917

Data Path : Z:\voasrv\HPCHEM1\MSVOA_N\Data\VN052924\
 Data File : VN082369.D
 Acq On : 29 May 2024 14:40
 Operator : JC\MD
 Sample : P2636-01
 Misc : 5.0mL/MSVOA_N/WATER
 ALS Vial : 10 Sample Multiplier: 1

Instrument :
 MSVOA_N
 ClientSampleId :
 TOTE-COMP

Quant Method : Z:\voasrv\HPCHEM1\MSVOA_N\methods\82N051524W.M
 Quant Title : SW846 8260

TIC Library : C:\Database\NIST20.L
 TIC Integration Parameters: LSCINT.P



Library Search Compound Report

Data Path : Z:\voasrv\HPCHEM1\MSVOA_N\Data\VN052924\
Data File : VN082369.D
Acq On : 29 May 2024 14:40
Operator : JC\MD
Sample : P2636-01
Misc : 5.0mL/MSVOA_N/WATER
ALS Vial : 10 Sample Multiplier: 1

Instrument :
MSVOA_N
ClientSampleId :
TOTE-COMP

Quant Method : Z:\voasrv\HPCHEM1\MSVOA_N\methods\82N051524W.M
Quant Title : SW846 8260

TIC Library : C:\Database\NIST20.L
TIC Integration Parameters: LSCINT.P

No Library Search Compounds Detected

Data Path : Z:\voasrv\HPCHEM1\MSVOA_N\Data\VN052924\
Data File : VN082369.D
Acq On : 29 May 2024 14:40
Operator : JC\MD
Sample : P2636-01
Misc : 5.0mL/MSVOA_N/WATER
ALS Vial : 10 Sample Multiplier: 1

Instrument :
MSVOA_N
ClientSampleId :
TOTE-COMP

Quant Method : Z:\voasrv\HPCHEM1\MSVOA_N\methods\82N051524W.M
Quant Title : SW846 8260

TIC Library : C:\Database\NIST20.L
TIC Integration Parameters: LSCINT.P

TIC Top Hit name	RT	EstConc	Units	Response	--Internal Standard--		
					#	RT	Resp Conc
