

Data Path : Z:\VOASRV\HPCHEM1\MSVOA N\DATA\VN053019\
 Data File : VN055896.D
 Acq On : 30 May 2019 13:23
 Operator : JC/SP
 Sample : K3090-10
 Misc : 5.00mL/MSVOA N/WATER
 ALS Vial : 10 Sample Multiplier: 1

Instrument :
 MSVOA_N
 ClientSampled :
 TP-4-D

Quant Time: May 31 04:57:40 2019
 Quant Method : Z:\VOASRV\HPCHEM1\MSVOA_N\METHODS\82N052319W.M
 Quant Title : SW846 8260
 QLast Update : Fri May 24 06:41:54 2019
 Response via : Initial Calibration

Internal Standards	R.T.	QIon	Response	Conc	Units	Dev(Min)
1) Pentafluorobenzene	7.66	168	354262	50.00	ug/l	0.00
34) 1,4-Difluorobenzene	8.58	114	536072	50.00	ug/l	0.00
63) Chlorobenzene-d5	11.41	117	497737	50.00	ug/l	0.00
72) 1,4-Dichlorobenzene-d4	13.34	152	176567	50.00	ug/l	0.00

System Monitoring Compounds

33) 1,2-Dichloroethane-d4	8.03	65	183060	50.04	ug/l	0.00
Spiked Amount				50.000		
Recovery				=	100.08%	
35) Dibromofluoromethane	7.59	113	158155	46.66	ug/l	0.00
Spiked Amount				50.000		
Recovery				=	93.32%	
50) Toluene-d8	10.09	98	643252	49.48	ug/l	0.00
Spiked Amount				50.000		
Recovery				=	98.96%	
62) 4-Bromofluorobenzene	12.40	95	213090	47.80	ug/l	0.00
Spiked Amount				50.000		
Recovery				=	95.60%	

Target Compounds

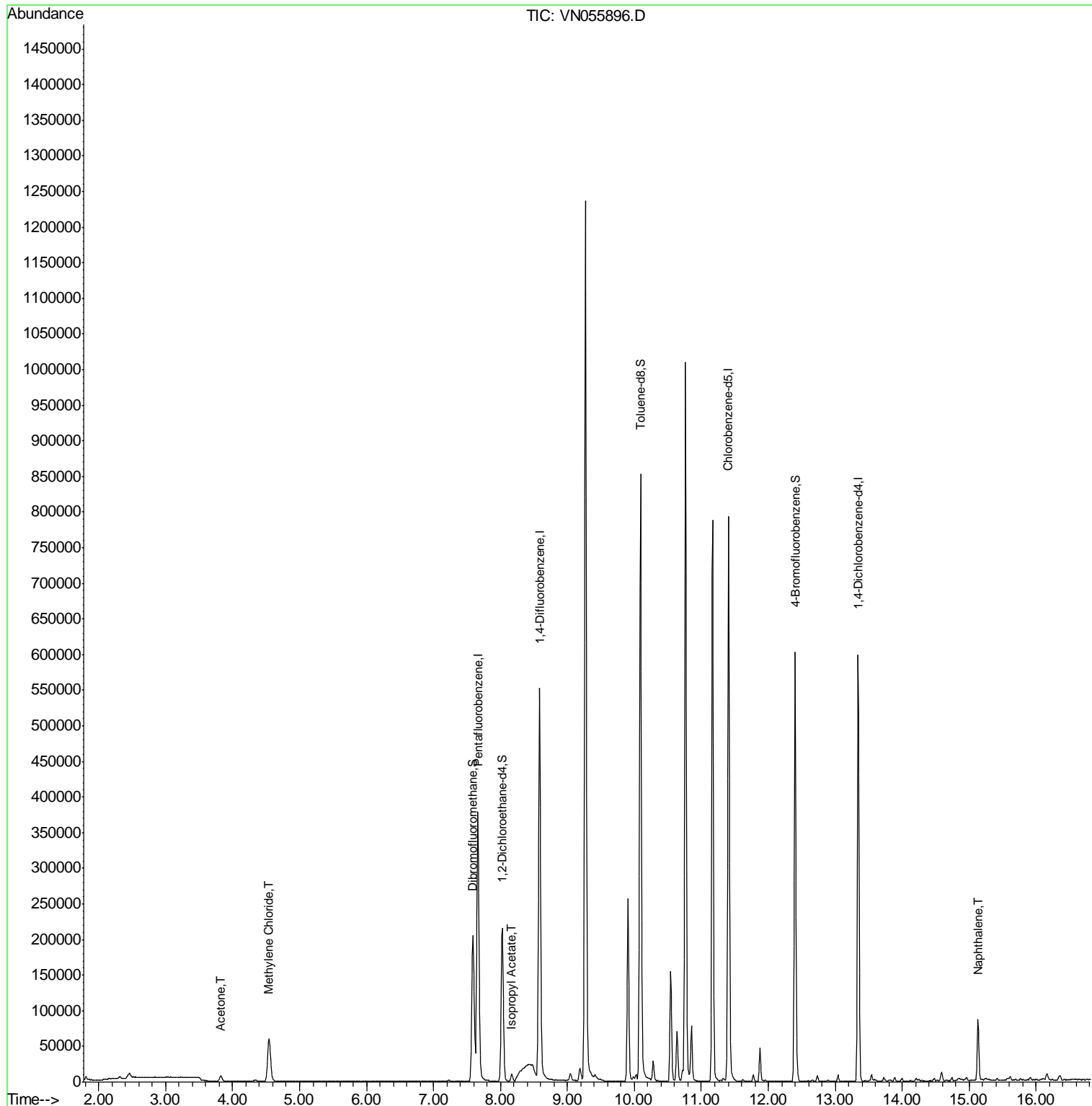
					Qvalue
16) Acetone	3.82	43	13230	8.227	ug/l 100
20) Methylene Chloride	4.54	84	49163	14.116	ug/l 99
43) Isopropyl Acetate	8.17	43	11995	1.581	ug/l # 89
95) Naphthalene	15.13	128	78408	9.600	ug/l 99

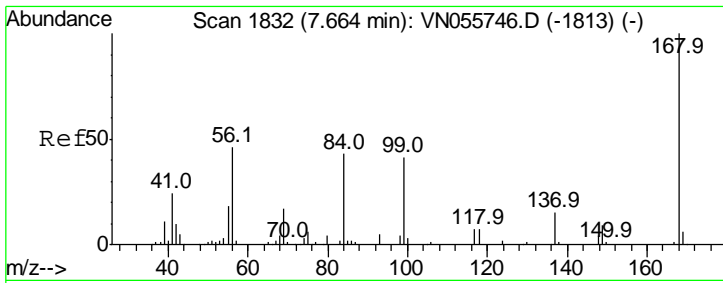
(#) = qualifier out of range (m) = manual integration (+) = signals summed

Data Path : Z:\VOASRV\HPCHEM1\MSVOA N\DATA\VN053019\
 Data File : VN055896.D
 Acq On : 30 May 2019 13:23
 Operator : JC/SP
 Sample : K3090-10
 Misc : 5.00mL/MSVOA N/WATER
 ALS Vial : 10 Sample Multiplier: 1

Instrument :
 MSVOA_N
 ClientSampled :
 TP-4-D

Quant Time: May 31 04:57:40 2019
 Quant Method : Z:\VOASRV\HPCHEM1\MSVOA_N\METHODS\82N052319W.M
 Quant Title : SW846 8260
 QLast Update : Fri May 24 06:41:54 2019
 Response via : Initial Calibration

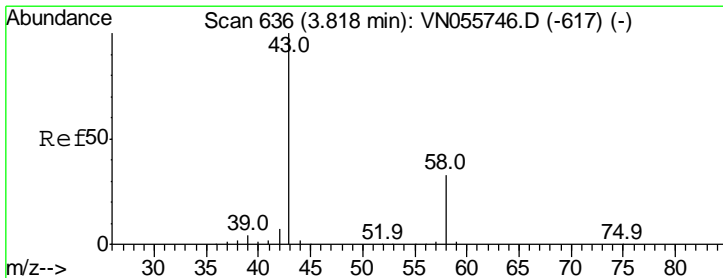
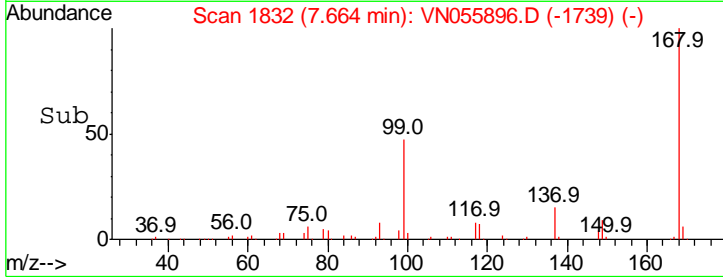
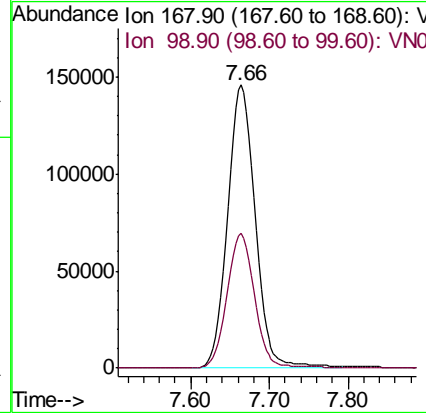
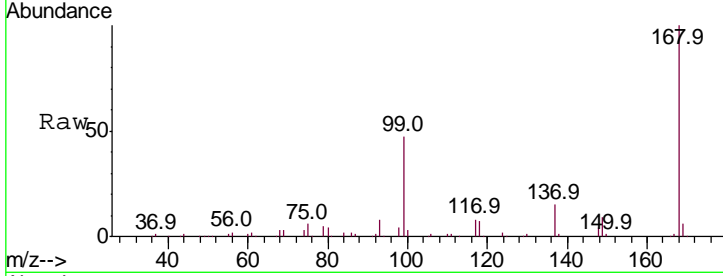




#1
 Pentafluorobenzene
 Concen: 50.000 ug/l
 RT: 7.66 min Scan# 1832
 Delta R.T. 0.00 min
 Lab File: VN055896.D
 Acq: 30 May 2019 13:23

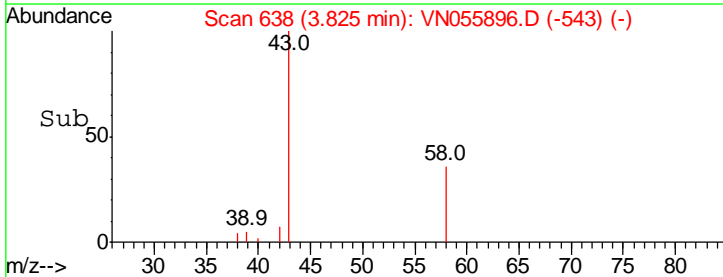
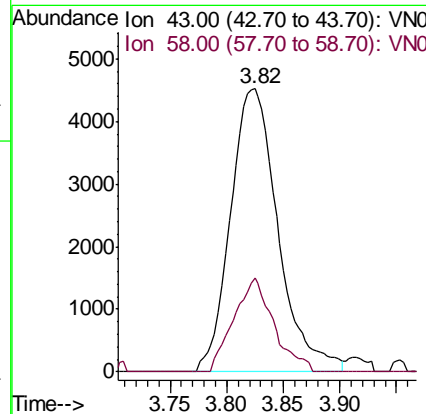
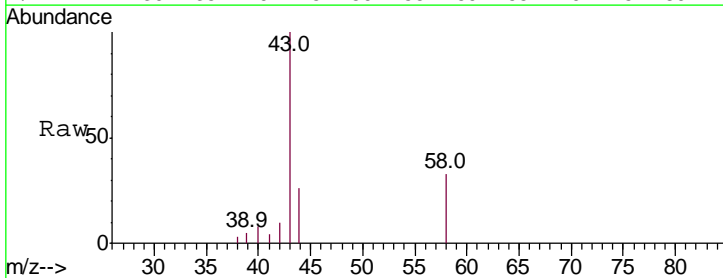
Instrument : MSVOA_N
 ClientSampled : TP-4-D

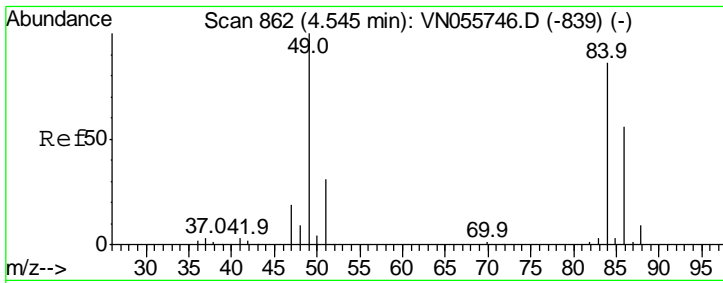
Tgt Ion: 168 Resp: 354262
 Ion Ratio Lower Upper
 168 100
 99 47.5 37.2 55.8



#16
 Acetone
 Concen: 8.227 ug/l
 RT: 3.82 min Scan# 638
 Delta R.T. 0.01 min
 Lab File: VN055896.D
 Acq: 30 May 2019 13:23

Tgt Ion: 43 Resp: 13230
 Ion Ratio Lower Upper
 43 100
 58 33.1 26.6 39.8

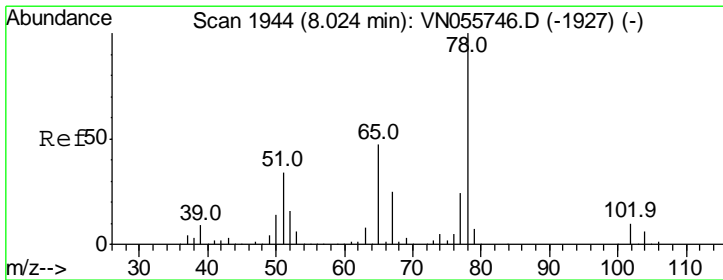
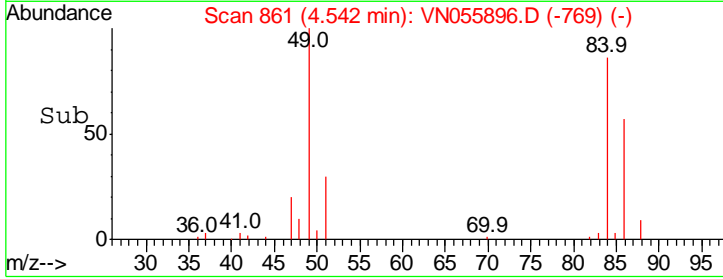
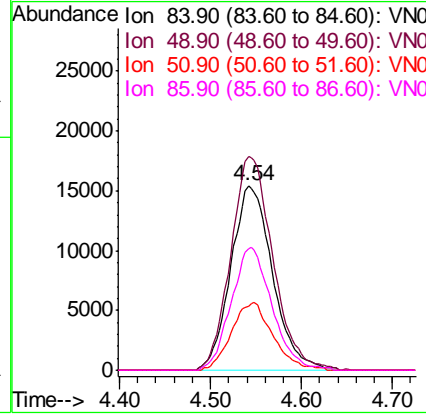
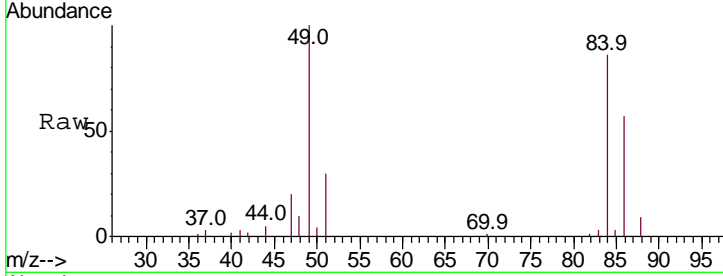




#20
 Methylene Chloride
 Concen: 14.116 ug/l
 RT: 4.54 min Scan# 861
 Delta R.T. -0.00 min
 Lab File: VN055896.D
 Acq: 30 May 2019 13:23

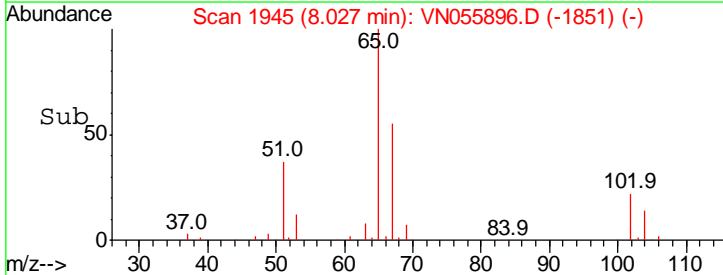
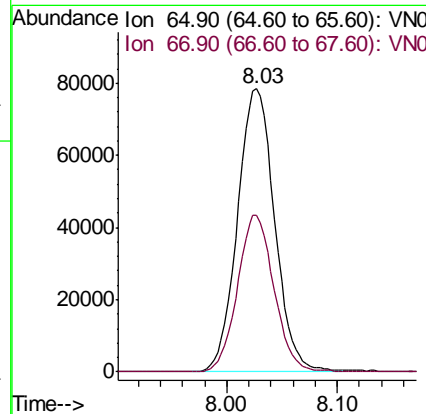
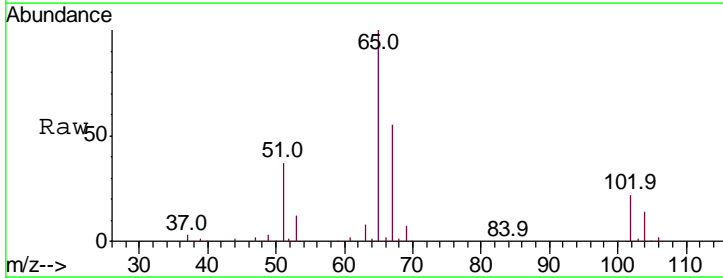
Instrument :
 MSVOA_N
 ClientSampled :
 TP-4-D

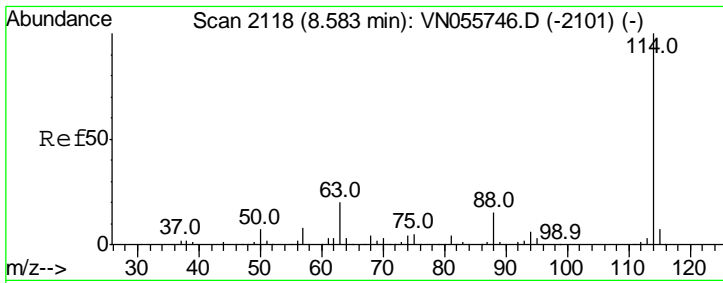
Tgt Ion	Resp	Lower	Upper
84	100		
49	115.9	93.5	140.3
51	34.5	28.6	43.0
86	65.9	52.6	79.0



#33
 1,2-Dichloroethane-d4
 Concen: 50.036 ug/l
 RT: 8.03 min Scan# 1945
 Delta R.T. 0.00 min
 Lab File: VN055896.D
 Acq: 30 May 2019 13:23

Tgt Ion	Resp	Lower	Upper
65	100		
67	54.3	0.0	109.2

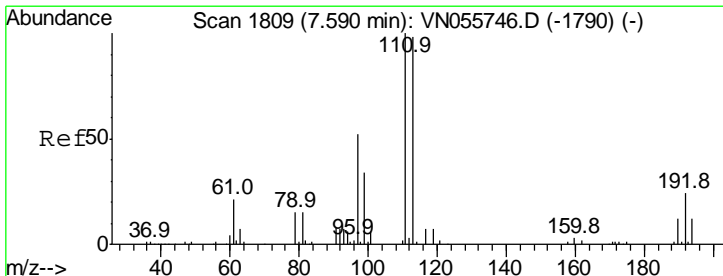
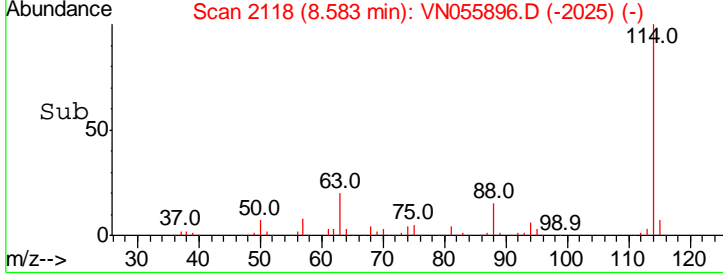
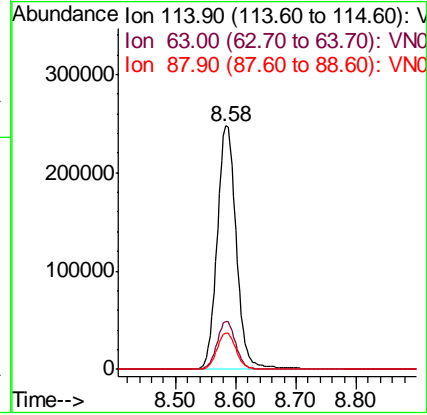
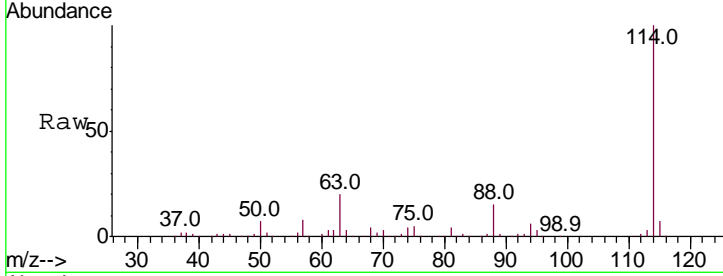




#34
 1,4-Difluorobenzene
 Concen: 50.000 ug/l
 RT: 8.58 min Scan# 2118
 Delta R.T. 0.00 min
 Lab File: VN055896.D
 Acq: 30 May 2019 13:23

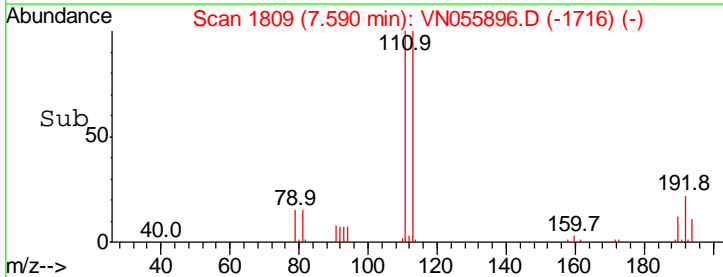
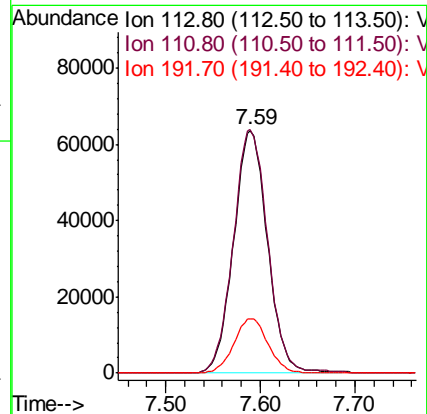
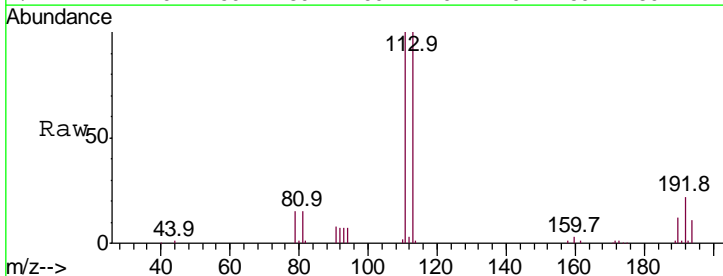
Instrument :
 MSVOA_N
 ClientSampled :
 TP-4-D

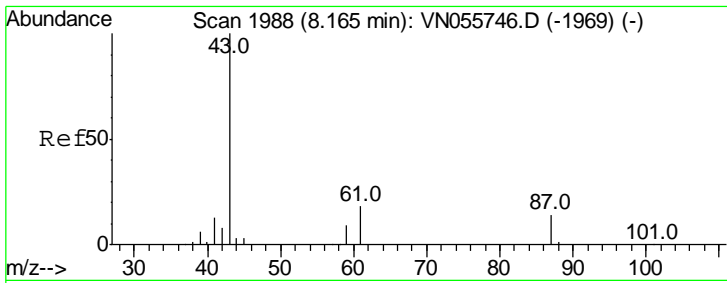
Tgt Ion	Resp	Lower	Upper
114	100		
63	19.9	0.0	39.2
88	15.1	0.0	31.0



#35
 Dibromofluoromethane
 Concen: 46.664 ug/l
 RT: 7.59 min Scan# 1809
 Delta R.T. 0.00 min
 Lab File: VN055896.D
 Acq: 30 May 2019 13:23

Tgt Ion	Resp	Lower	Upper
113	100		
111	102.3	81.9	122.9
192	22.5	19.5	29.3

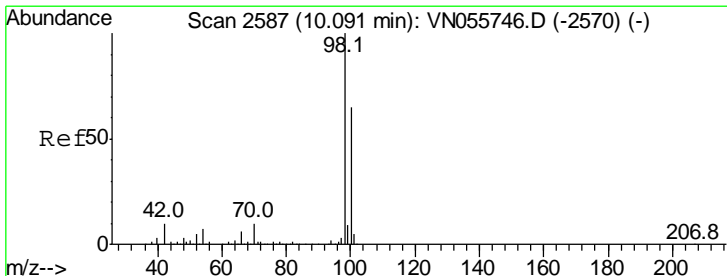
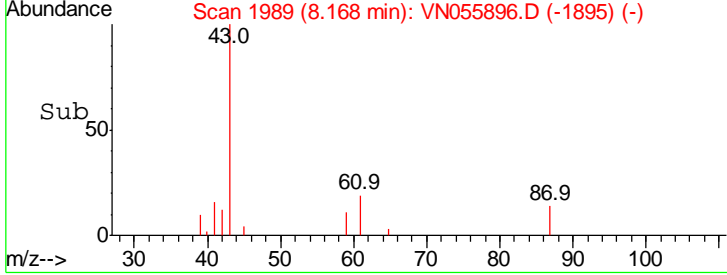
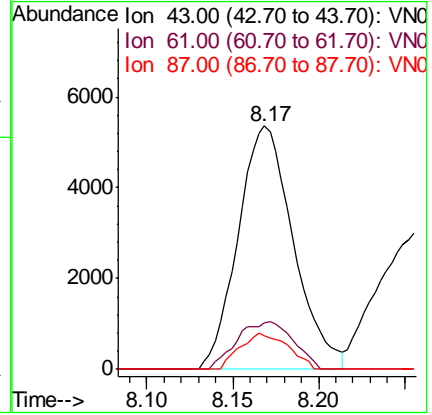
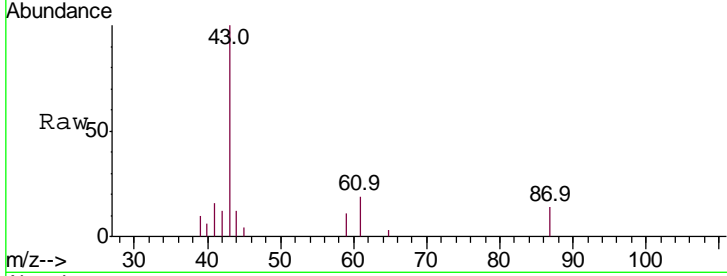




#43
 Isopropyl Acetate
 Concen: 1.581 ug/l
 RT: 8.17 min Scan# 1989
 Delta R.T. 0.00 min
 Lab File: VN055896.D
 Acq: 30 May 2019 13:23

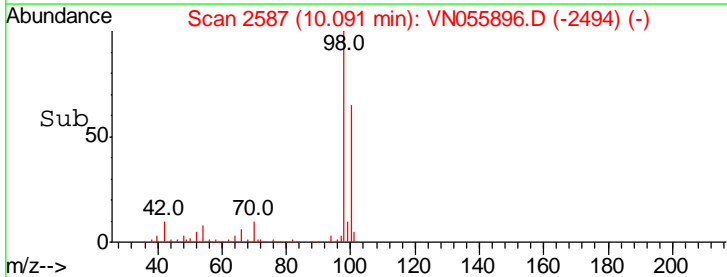
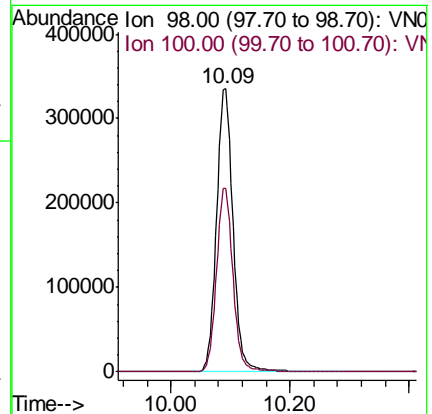
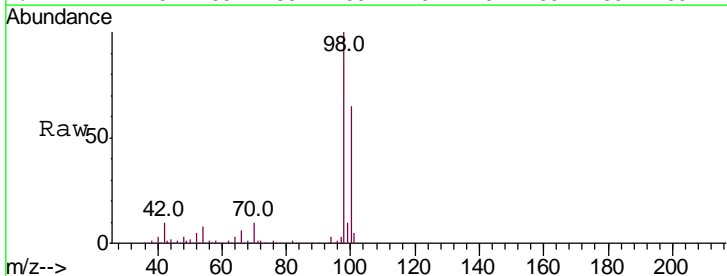
Instrument :
 MSVOA_N
 ClientSampled :
 TP-4-D

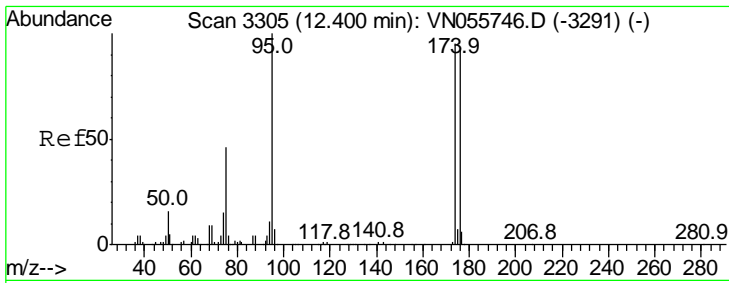
Tgt Ion	Resp	Lower	Upper
43	11995		
61	19.9	22.2	33.4#
87	12.9	11.4	17.2



#50
 Toluene-d8
 Concen: 49.478 ug/l
 RT: 10.09 min Scan# 2587
 Delta R.T. 0.00 min
 Lab File: VN055896.D
 Acq: 30 May 2019 13:23

Tgt Ion	Resp	Lower	Upper
98	643252		
100	64.8	51.9	77.9

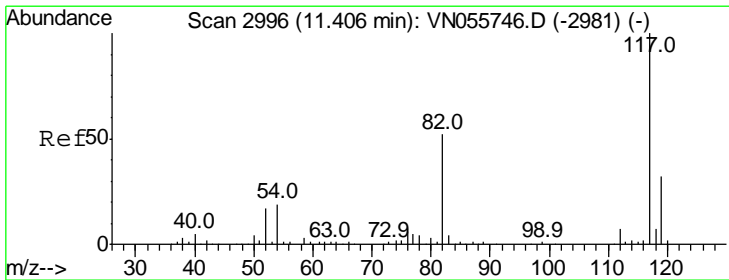
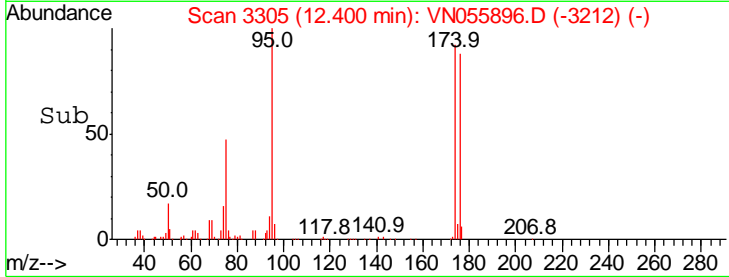
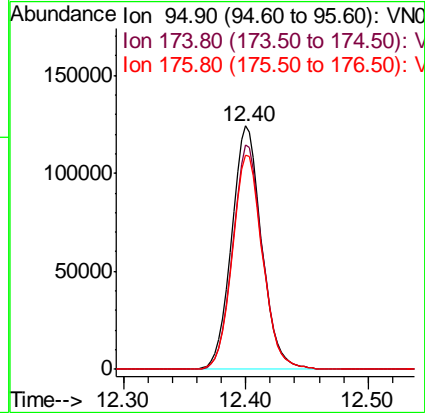
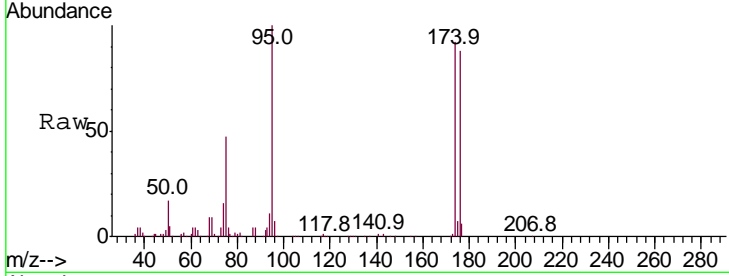




#62
 4-Bromofluorobenzene
 Concen: 47.801 ug/l
 RT: 12.40 min Scan# 3305
 Delta R.T. 0.00 min
 Lab File: VN055896.D
 Acq: 30 May 2019 13:23

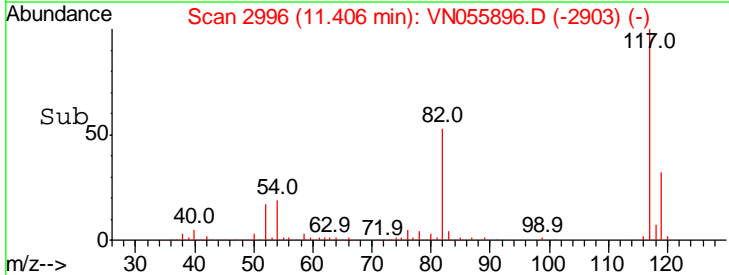
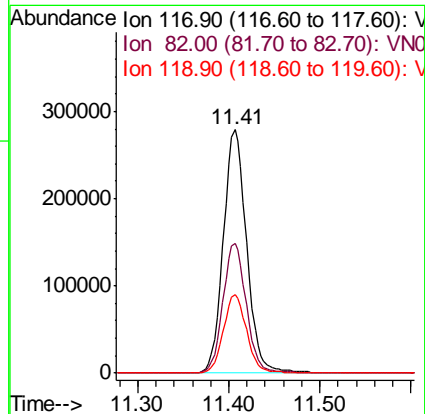
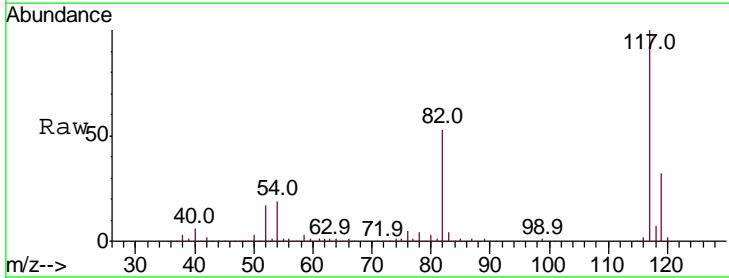
Instrument :
 MSVOA_N
 ClientSampled :
 TP-4-D

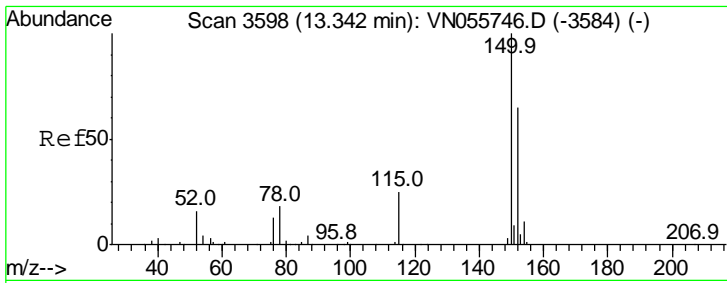
Tgt Ion	Resp	Lower	Upper
95	100		
174	91.2	0.0	191.0
176	88.4	0.0	185.2



#63
 Chlorobenzene-d5
 Concen: 50.000 ug/l
 RT: 11.41 min Scan# 2996
 Delta R.T. 0.00 min
 Lab File: VN055896.D
 Acq: 30 May 2019 13:23

Tgt Ion	Resp	Lower	Upper
117	100		
82	53.4	41.8	62.8
119	32.2	25.4	38.0

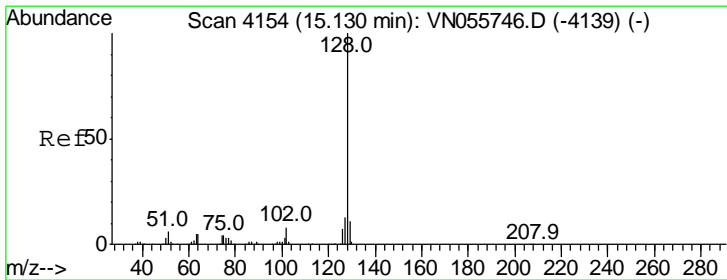
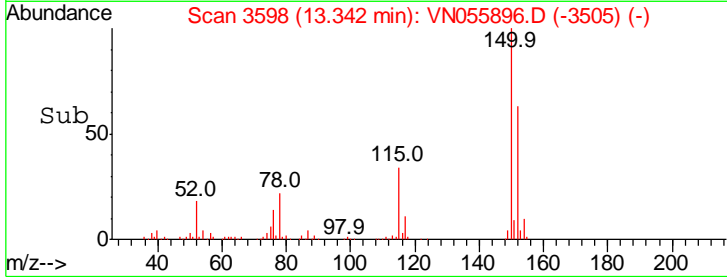
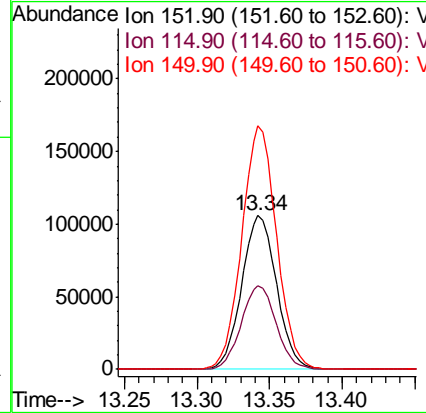
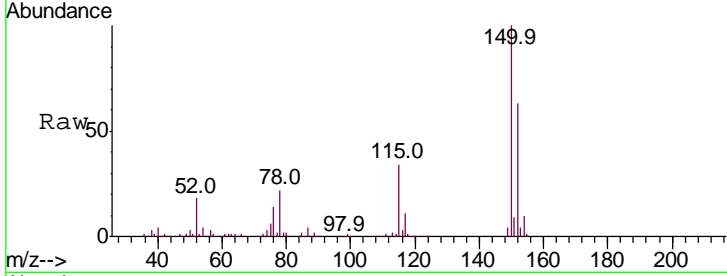




#72
 1,4-Dichlorobenzene-d4
 Concen: 50.000 ug/l
 RT: 13.34 min Scan# 3598
 Delta R.T. 0.00 min
 Lab File: VN055896.D
 Acq: 30 May 2019 13:23

Instrument :
 MSVOA_N
 ClientSampled :
 TP-4-D

Tgt Ion	Resp	Lower	Upper
152	176567		
115	54.6	27.0	81.0
150	158.0	0.0	343.2



#95
 Naphthalene
 Concen: 9.600 ug/l
 RT: 15.13 min Scan# 4155
 Delta R.T. 0.00 min
 Lab File: VN055896.D
 Acq: 30 May 2019 13:23

Tgt Ion	Resp	Lower	Upper
128	78408		
127	12.4	10.3	15.5
129	11.1	8.7	13.1

