

Data Path : Z:\VOASRV\HPCHEM1\MSVOA N\DATA\VN053119\
 Data File : VN055927.D
 Acq On : 31 May 2019 18:29
 Operator : JC/SP
 Sample : K3129-20
 Misc : 5.00mL/MSVOA N/WATER
 ALS Vial : 22 Sample Multiplier: 1

Instrument :
 MSVOA_N
 ClientSampleId :
 LF012RW042-190529

Quant Time: Jun 01 03:37:28 2019
 Quant Method : Z:\VOASRV\HPCHEM1\MSVOA_N\METHODS\82N052319W.M
 Quant Title : SW846 8260
 QLast Update : Fri May 24 06:41:54 2019
 Response via : Initial Calibration

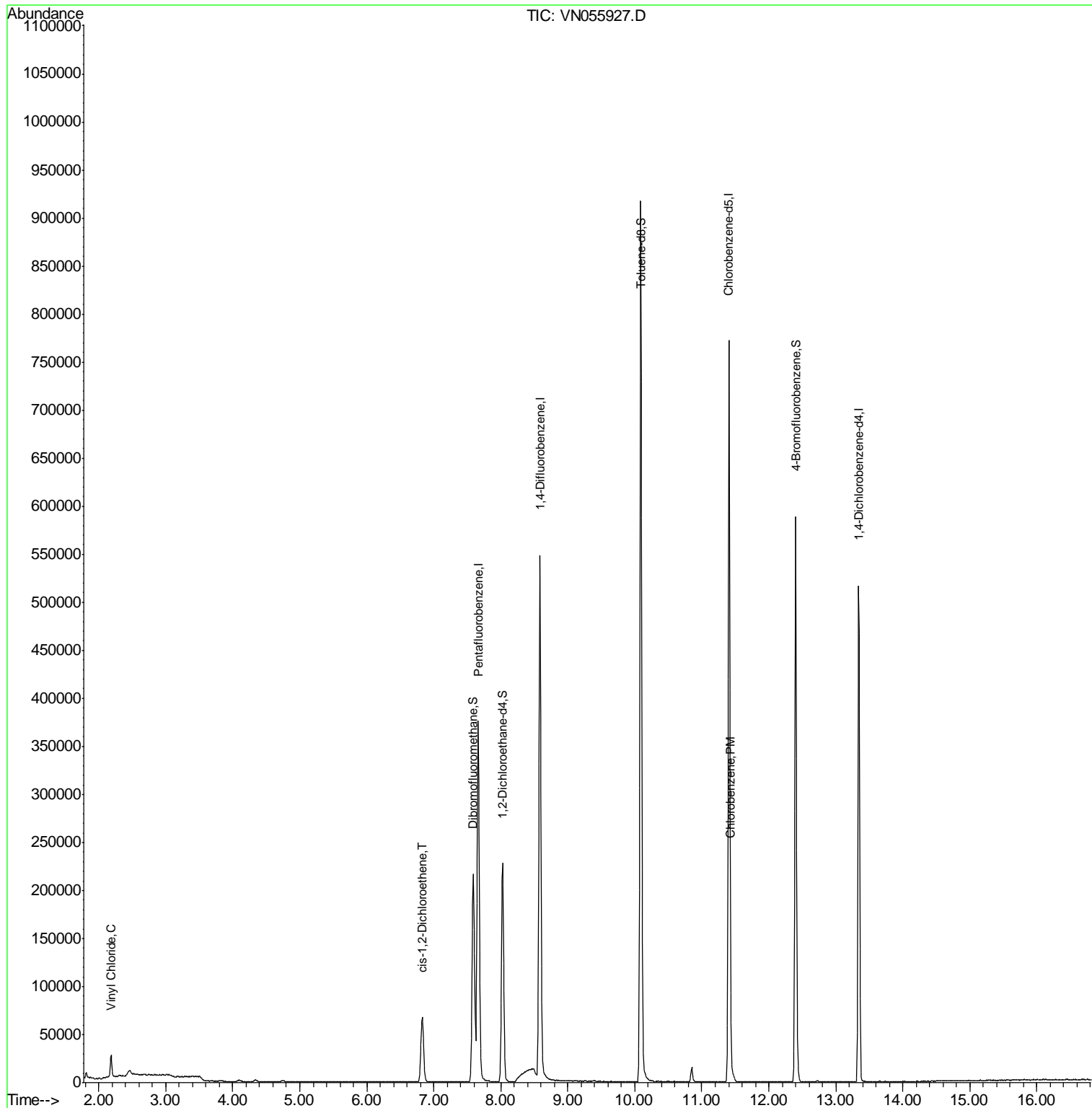
Internal Standards	R.T.	QIon	Response	Conc	Units	Dev(Min)
1) Pentafluorobenzene	7.66	168	353181	50.00	ug/l	0.00
34) 1,4-Difluorobenzene	8.59	114	533886	50.00	ug/l	0.00
63) Chlorobenzene-d5	11.41	117	489527	50.00	ug/l	0.00
72) 1,4-Dichlorobenzene-d4	13.34	152	157082	50.00	ug/l	0.00
System Monitoring Compounds						
33) 1,2-Dichloroethane-d4	8.03	65	193969	53.18	ug/l	0.00
Spiked Amount	50.000		Recovery	=	106.36%	
35) Dibromofluoromethane	7.59	113	168007	49.77	ug/l	0.00
Spiked Amount	50.000		Recovery	=	99.54%	
50) Toluene-d8	10.09	98	681339	52.62	ug/l	0.00
Spiked Amount	50.000		Recovery	=	105.24%	
62) 4-Bromofluorobenzene	12.40	95	213661	48.13	ug/l	0.00
Spiked Amount	50.000		Recovery	=	96.26%	
Target Compounds						
4) Vinyl Chloride	2.18	62	20688	5.824	ug/l	99
27) cis-1,2-Dichloroethene	6.83	96	46595	12.376	ug/l	89
65) Chlorobenzene	11.44	112	5277	0.538	ug/l	97

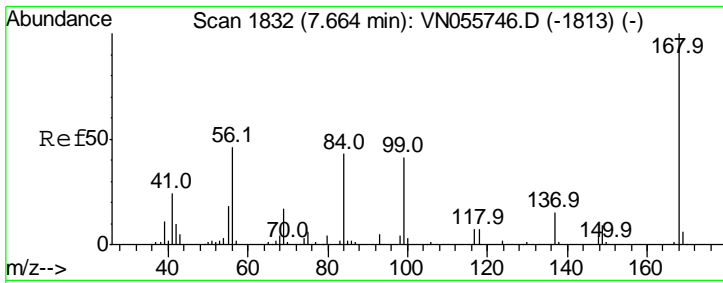
(#) = qualifier out of range (m) = manual integration (+) = signals summed

Data Path : Z:\VOASRV\HPCHEM1\MSVOA N\DATA\VN053119\
Data File : VN055927.D
Acq On : 31 May 2019 18:29
Operator : JC/SP
Sample : K3129-20
Misc : 5.00mL/MSVOA N/WATER
ALS Vial : 22 Sample Multiplier: 1

Instrument :
MSVOA_N
ClientSampleId :
LF012RW042-190529

Quant Time: Jun 01 03:37:28 2019
Quant Method : Z:\VOASRV\HPCHEM1\MSVOA_N\METHODS\82N052319W.M
Quant Title : SW846 8260
QLast Update : Fri May 24 06:41:54 2019
Response via : Initial Calibration

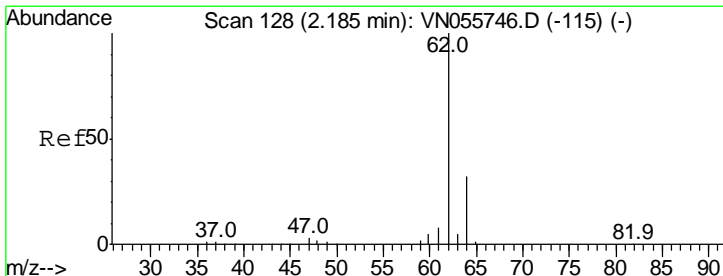
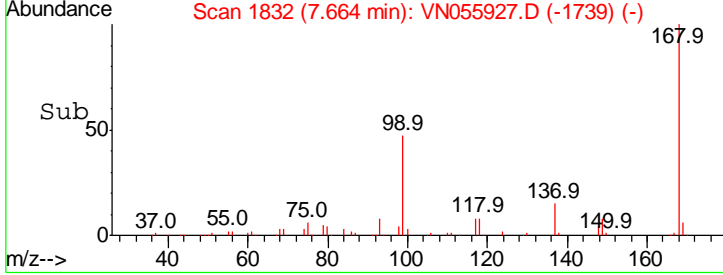
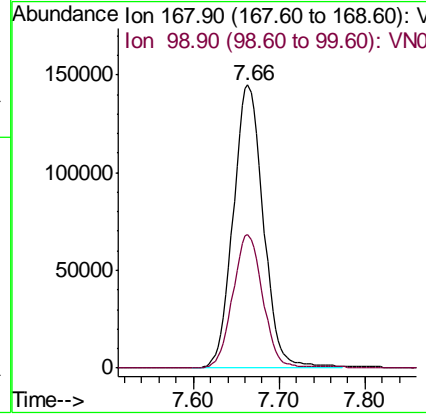
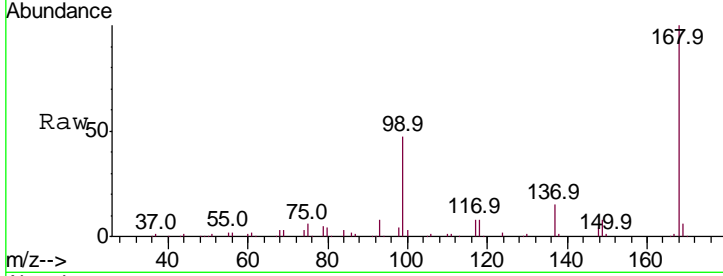




#1
 Pentafluorobenzene
 Concen: 50.000 ug/l
 RT: 7.66 min Scan# 1832
 Delta R.T. 0.00 min
 Lab File: VN055927.D
 Acq: 31 May 2019 18:29

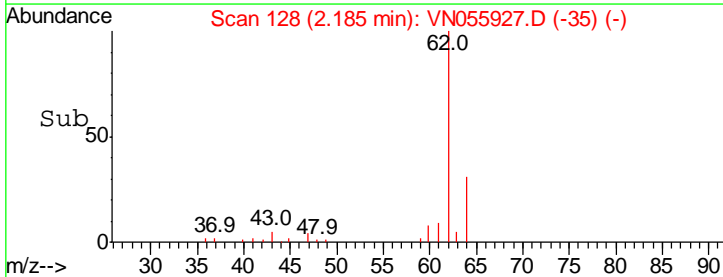
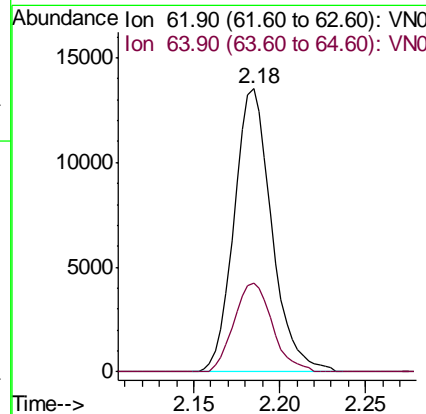
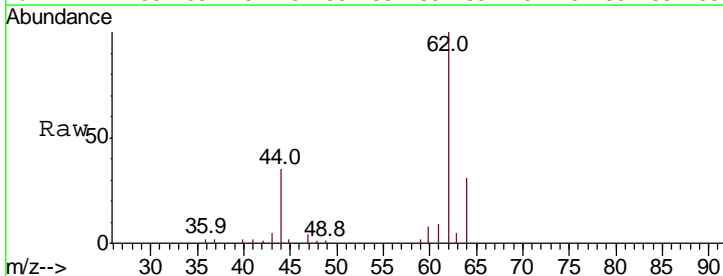
Instrument :
 MSVOA_N
 ClientSampled :
 LF012RW042-190529

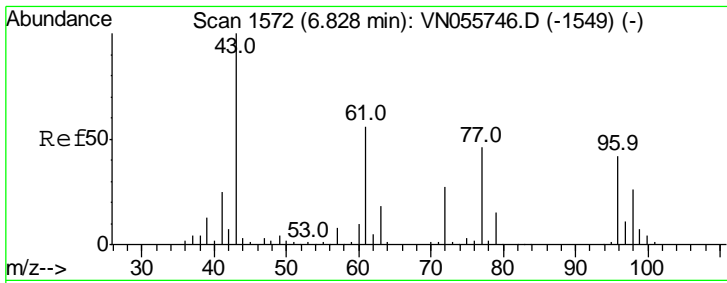
Tgt Ion	Resp	Lower	Upper
168	100		
99	47.1	37.2	55.8



#4
 Vinyl Chloride
 Concen: 5.824 ug/l
 RT: 2.18 min Scan# 128
 Delta R.T. 0.00 min
 Lab File: VN055927.D
 Acq: 31 May 2019 18:29

Tgt Ion	Resp	Lower	Upper
62	100		
64	31.4	25.6	38.4

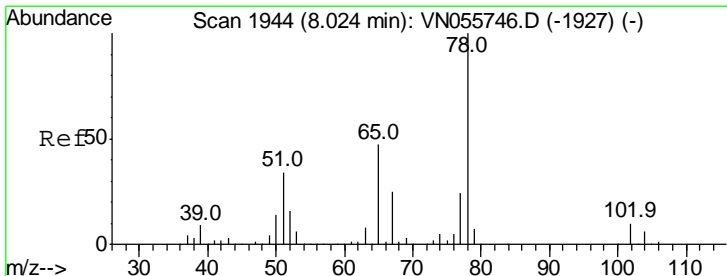
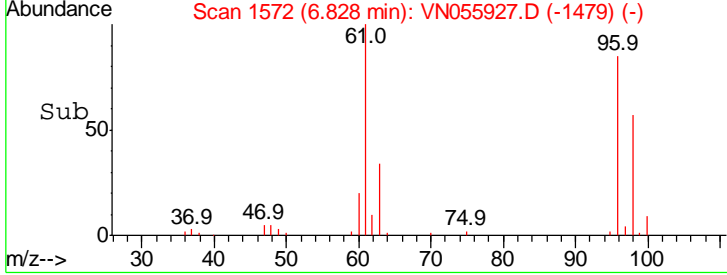
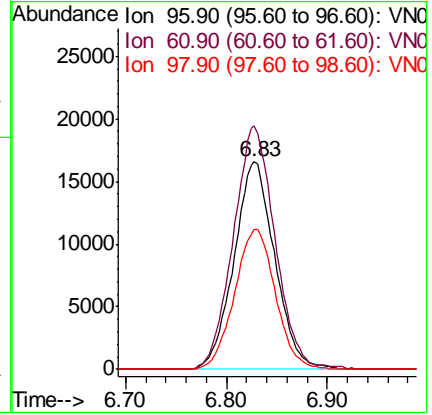
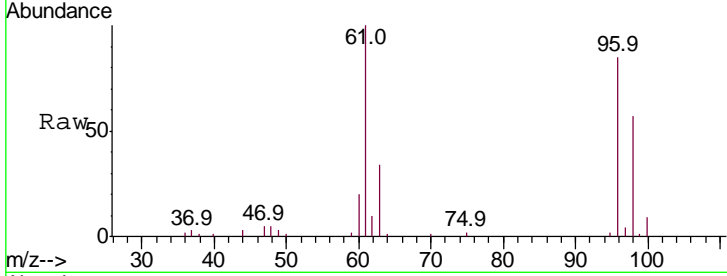




#27
 cis-1,2-Dichloroethene
 Concen: 12.376 ug/l
 RT: 6.83 min Scan# 1572
 Delta R.T. 0.00 min
 Lab File: VN055927.D
 Acq: 31 May 2019 18:29

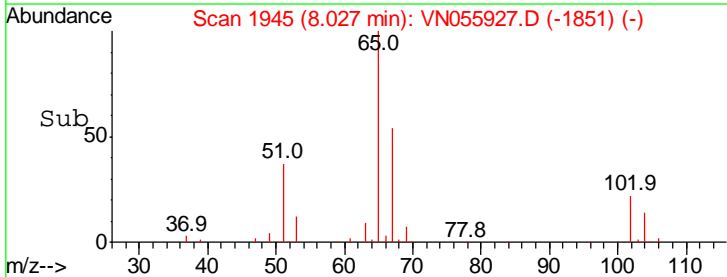
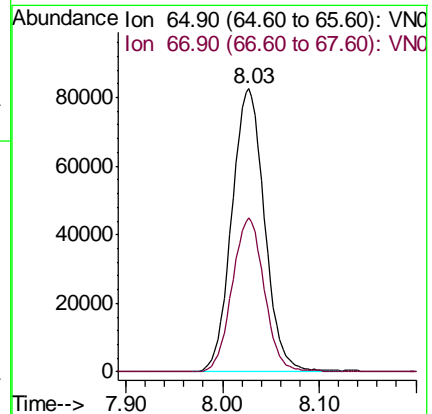
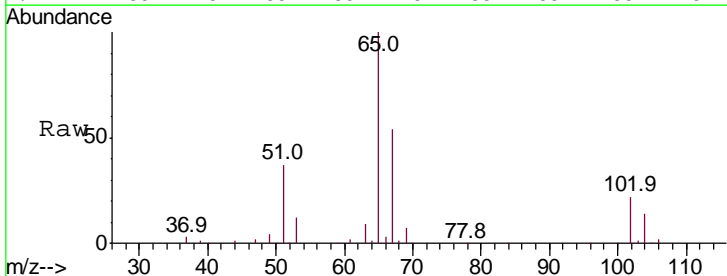
Instrument :
 MSVOA_N
ClientSampled :
 LF012RW042-190529

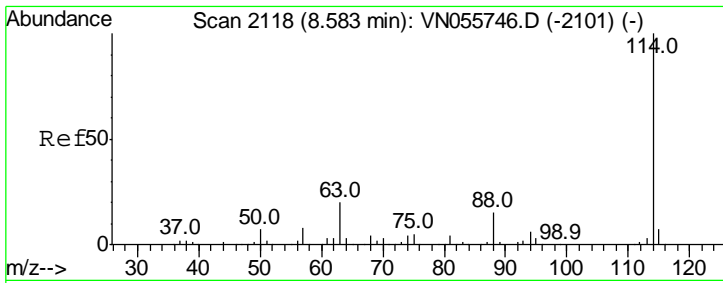
Tgt Ion	Resp	Lower	Upper
96	46595		
96	100		
61	120.0	0.0	275.8
98	67.6	0.0	128.4



#33
 1,2-Dichloroethane-d4
 Concen: 53.180 ug/l
 RT: 8.03 min Scan# 1945
 Delta R.T. 0.00 min
 Lab File: VN055927.D
 Acq: 31 May 2019 18:29

Tgt Ion	Resp	Lower	Upper
65	193969		
65	100		
67	53.6	0.0	109.2

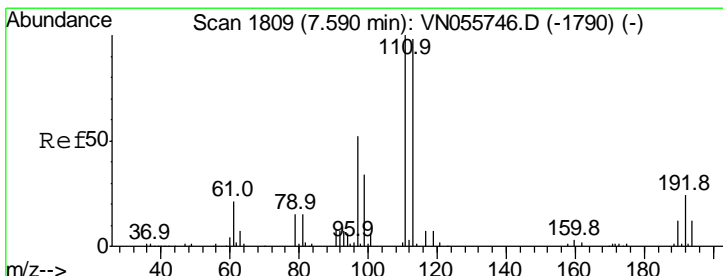
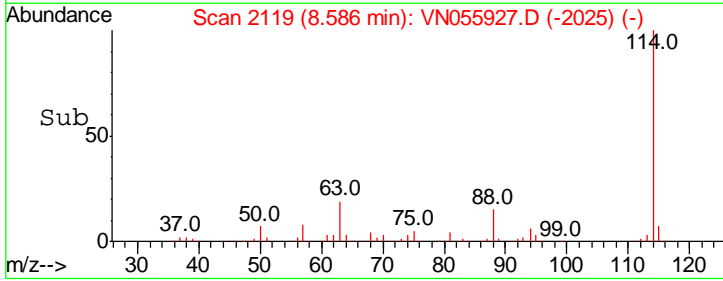
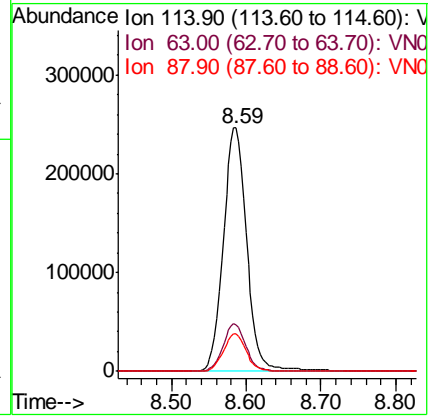
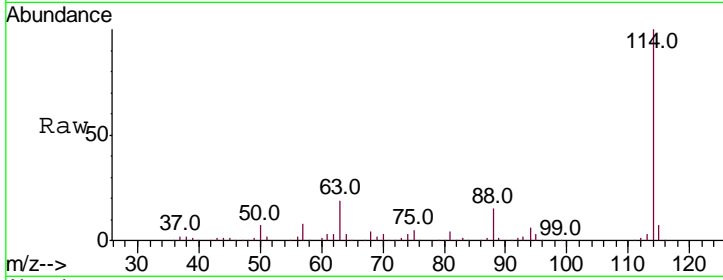




#34
 1,4-Difluorobenzene
 Concen: 50.000 ug/l
 RT: 8.59 min Scan# 2119
 Delta R.T. 0.00 min
 Lab File: VN055927.D
 Acq: 31 May 2019 18:29

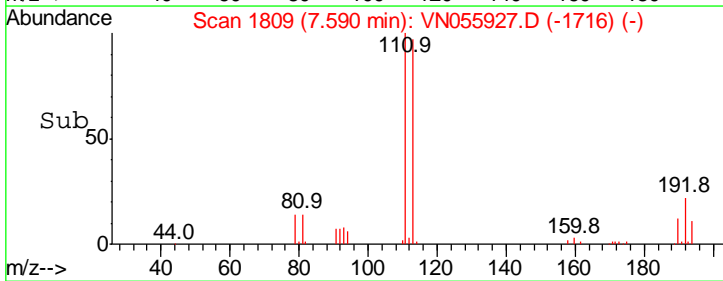
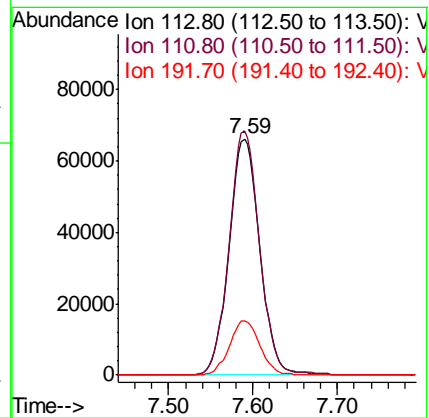
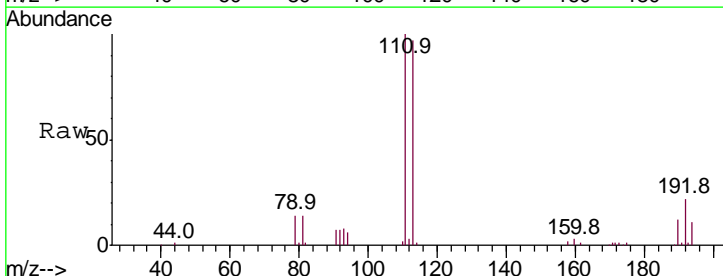
Instrument :
 MSVOA_N
 ClientSampleId :
 LF012RW042-190529

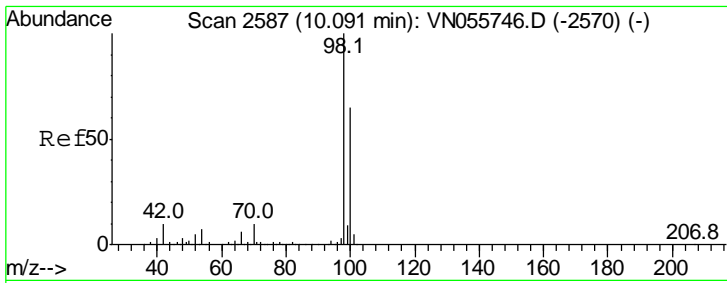
Tgt Ion	Resp	Lower	Upper
114	100		
63	19.4	0.0	39.2
88	15.5	0.0	31.0



#35
 Dibromofluoromethane
 Concen: 49.774 ug/l
 RT: 7.59 min Scan# 1809
 Delta R.T. 0.00 min
 Lab File: VN055927.D
 Acq: 31 May 2019 18:29

Tgt Ion	Resp	Lower	Upper
113	100		
111	102.4	81.9	122.9
192	22.8	19.5	29.3

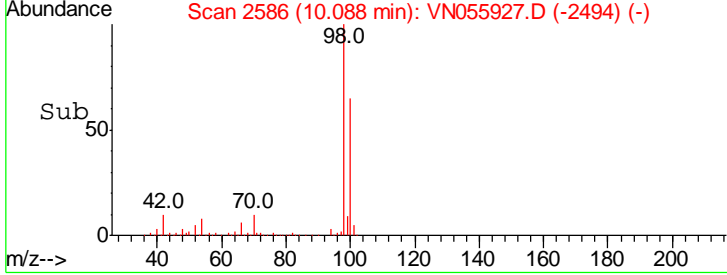
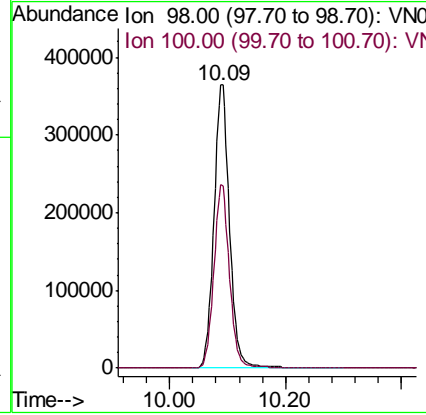
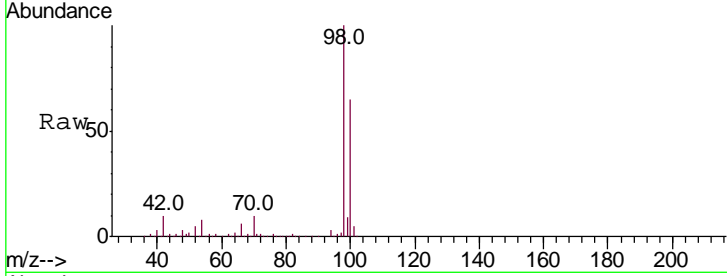




#50
 Toluene-d8
 Concen: 52.622 ug/l
 RT: 10.09 min Scan# 2586
 Delta R.T. -0.00 min
 Lab File: VN055927.D
 Acq: 31 May 2019 18:29

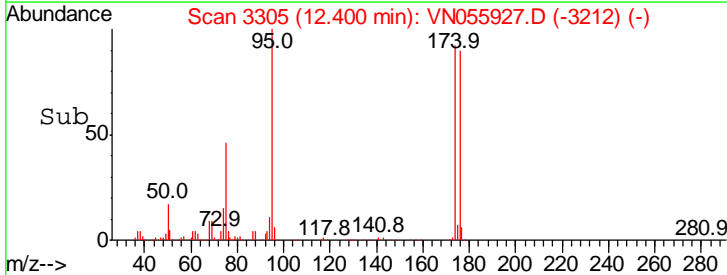
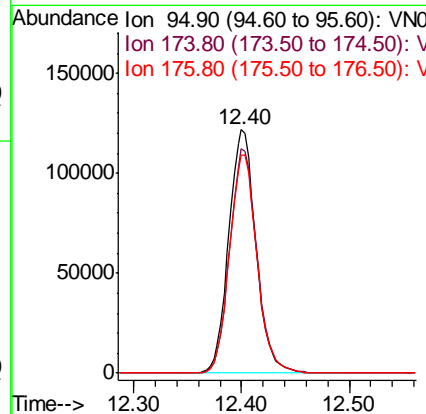
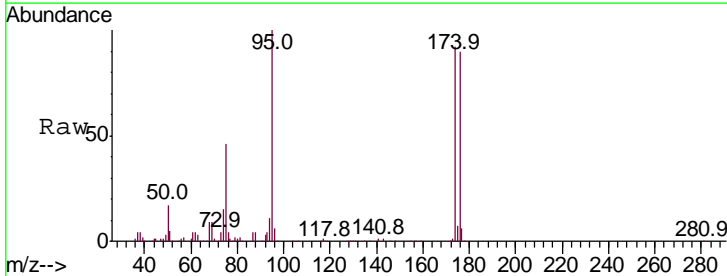
Instrument : MSVOA_N
 ClientSampled : LF012RW042-190529

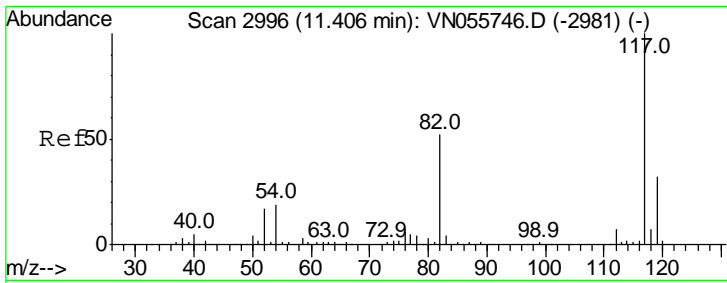
Tgt Ion	Resp	Lower	Upper
98	100		
100	64.6	51.9	77.9



#62
 4-Bromofluorobenzene
 Concen: 48.126 ug/l
 RT: 12.40 min Scan# 3305
 Delta R.T. 0.00 min
 Lab File: VN055927.D
 Acq: 31 May 2019 18:29

Tgt Ion	Resp	Lower	Upper
95	100		
174	92.2	0.0	191.0
176	89.9	0.0	185.2

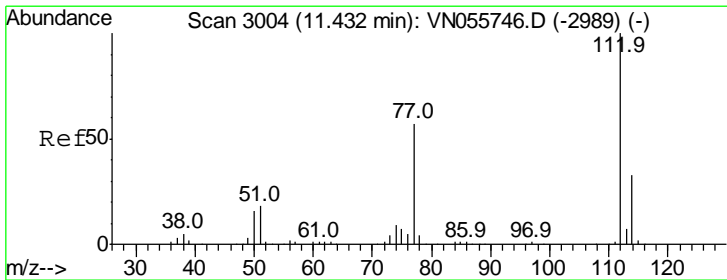
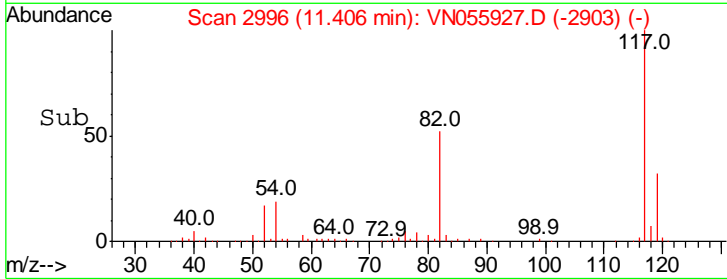
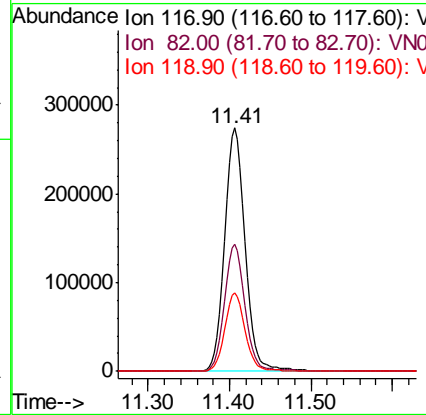
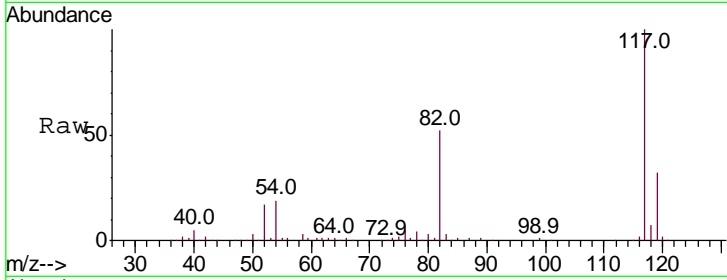




#63
 Chlorobenzene-d5
 Concen: 50.000 ug/l
 RT: 11.41 min Scan# 2996
 Delta R.T. 0.00 min
 Lab File: VN055927.D
 Acq: 31 May 2019 18:29

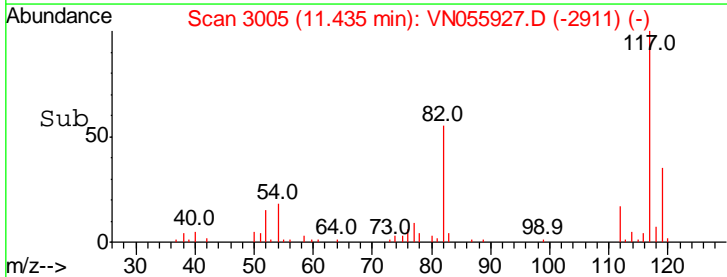
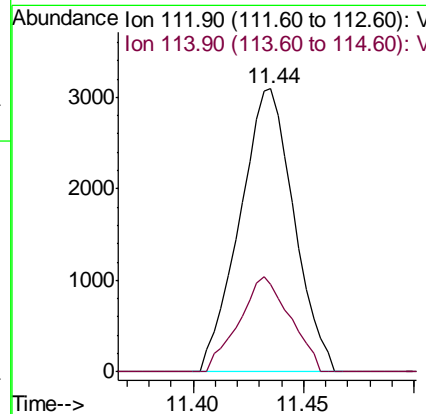
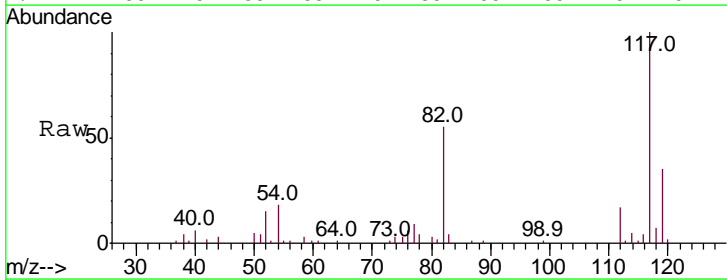
Instrument : MSVOA_N
 ClientSampled : LF012RW042-190529

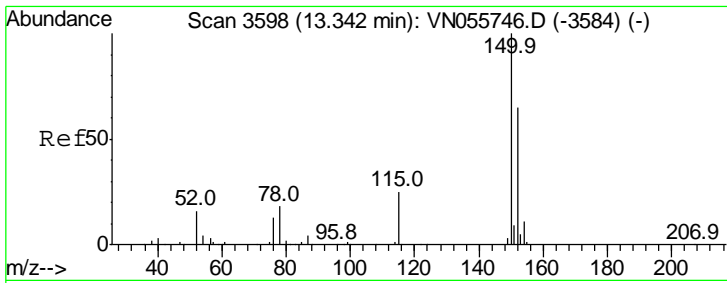
Tgt Ion	Resp	Lower	Upper
117	100		
82	52.2	41.8	62.8
119	32.1	25.4	38.0



#65
 Chlorobenzene
 Concen: 0.538 ug/l
 RT: 11.44 min Scan# 3005
 Delta R.T. 0.00 min
 Lab File: VN055927.D
 Acq: 31 May 2019 18:29

Tgt Ion	Resp	Lower	Upper
112	100		
114	31.1	26.2	39.4





#72
 1,4-Dichlorobenzene-d4
 Concen: 50.000 ug/l
 RT: 13.34 min Scan# 3598
 Delta R.T. 0.00 min
 Lab File: VN055927.D
 Acq: 31 May 2019 18:29

Instrument : MSVOA_N
 ClientSampleId : LF012RW042-190529

Tot Ion	Resp	Lower	Upper
152	157082		
152	100		
115	53.2	27.0	81.0
150	157.2	0.0	343.2

