

Data Path : Z:\VOASRV\HPCHEM1\MSVOA N\DATA\VN060320\
 Data File : VN061628.D
 Acq On : 3 Jun 2020 10:54
 Operator : JC/MD
 Sample : VN0603WBL01
 Misc : 5.00mL/MSVOA N/WATER
 ALS Vial : 3 Sample Multiplier: 1

Instrument :
 MSVOA_N
 ClientSampled :
 VN0603WBL01

Quant Time: Jun 04 07:43:29 2020
 Quant Method : Z:\VOASRV\HPCHEM1\MSVOA_N\METHODS\82N052820W.M
 Quant Title : SW846 8260
 QLast Update : Fri May 29 02:14:10 2020
 Response via : Initial Calibration

Internal Standards	R.T.	QIon	Response	Conc	Units	Dev(Min)
1) Pentafluorobenzene	7.62	168	279849	50.00	ug/l	0.00
34) 1,4-Difluorobenzene	8.55	114	476101	50.00	ug/l	0.00
63) Chlorobenzene-d5	11.38	117	441439	50.00	ug/l	0.00
72) 1,4-Dichlorobenzene-d4	13.32	152	179416	50.00	ug/l	0.00

System Monitoring Compounds	R.T.	QIon	Response	Conc	Units	Dev(Min)
33) 1,2-Dichloroethane-d4	7.99	65	156494	46.94	ug/l	0.00
Spiked Amount				50.000		
Recovery						= 93.88%
35) Dibromofluoromethane	7.55	113	131887	54.61	ug/l	0.00
Spiked Amount				50.000		
Recovery						= 109.22%
50) Toluene-d8	10.06	98	554814	49.57	ug/l	0.00
Spiked Amount				50.000		
Recovery						= 99.14%
62) 4-Bromofluorobenzene	12.38	95	191762	46.96	ug/l	0.00
Spiked Amount				50.000		
Recovery						= 93.92%

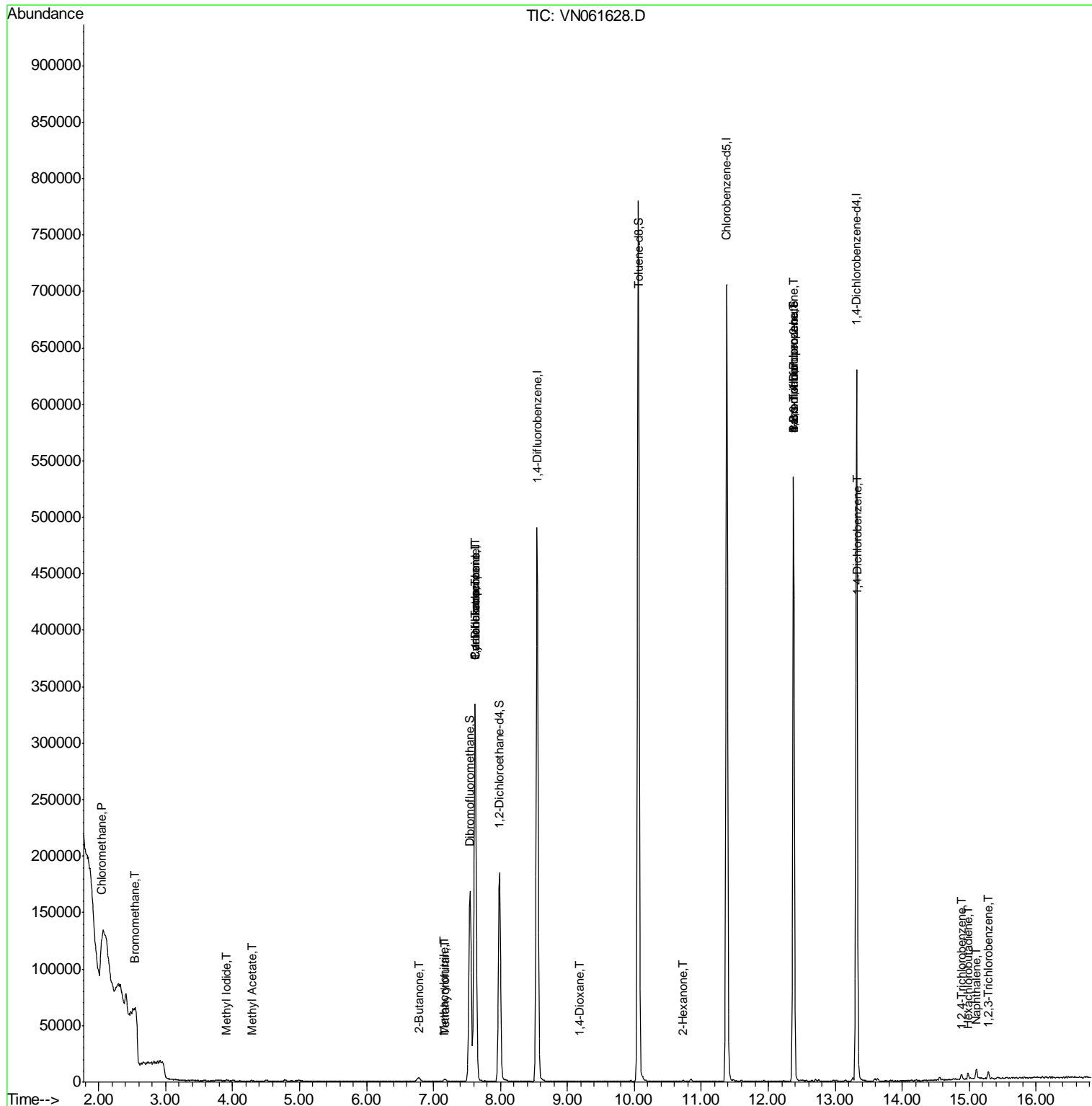
Target Compounds	R.T.	QIon	Response	Conc	Units	Qvalue
3) Chloromethane	2.04	50	2252	0.660	ug/l #	81
5) Bromomethane	2.54	94	1852	0.690	ug/l	95
10) Methyl Iodide	3.91	142	1804	0.486	ug/l #	62
16) Acetone	3.78	43	1457	Below Cal		99
18) Methyl Acetate	4.28	43	1328	0.440	ug/l #	55
20) Methylene Chloride	4.48	84	226	Below Cal	#	48
25) 2-Butanone	6.79	43	373	0.236	ug/l #	42
29) Tetrahydrofuran	7.16	42	673	0.646	ug/l #	42
31) Cyclohexane	7.62	56	5282	1.124	ug/l #	37
36) 1,1-Dichloropropene	7.62	75	20073	4.763	ug/l #	48
38) Carbon Tetrachloride	7.62	117	27038	6.651	ug/l #	15
41) Methacrylonitrile	7.16	41	809	0.520	ug/l #	15
49) 1,4-Dioxane	9.18	88	109	2.561	ug/l #	29
59) 2-Hexanone	10.72	43	975	0.394	ug/l	64
71) Bromoform	12.38	173	1528	0.580	ug/l #	1
76) 1,2,3-Trichloropropane	12.38	75	91967	28.189	ug/l #	100
81) trans-1,4-Dichloro-2-buten	12.38	75	91967	72.088	ug/l #	15
88) 1,4-Dichlorobenzene	13.34	146	1436	0.238	ug/l #	1
93) 1,2,4-Trichlorobenzene	14.89	180	2070	0.626	ug/l	86
94) Hexachlorobutadiene	14.98	225	1172	0.831	ug/l	87
95) Naphthalene	15.11	128	8854	0.879	ug/l	97
96) 1,2,3-Trichlorobenzene	15.29	180	2153	0.662	ug/l	89

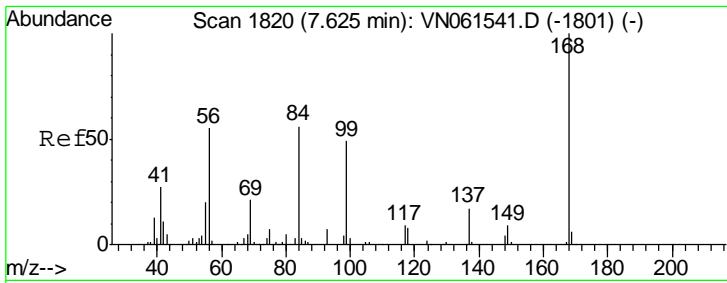
(#) = qualifier out of range (m) = manual integration (+) = signals summed

Data Path : Z:\VOASRV\HPCHEM1\MSVOA N\DATA\VN060320\
 Data File : VN061628.D
 Acq On : 3 Jun 2020 10:54
 Operator : JC/MD
 Sample : VN0603WBL01
 Misc : 5.00mL/MSVOA N/WATER
 ALS Vial : 3 Sample Multiplier: 1

Instrument :
 MSVOA_N
 Client Sampled :
 VN0603WBL01

Quant Time: Jun 04 07:43:29 2020
 Quant Method : Z:\VOASRV\HPCHEM1\MSVOA_N\METHODS\82N052820W.M
 Quant Title : SW846 8260
 QLast Update : Fri May 29 02:14:10 2020
 Response via : Initial Calibration

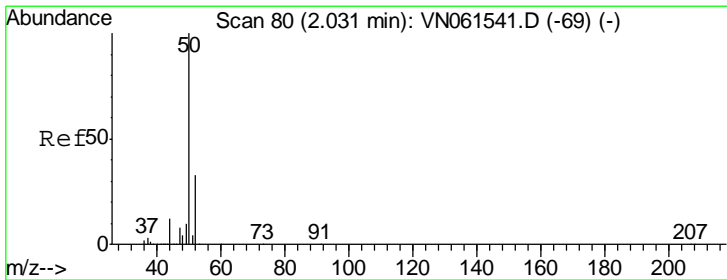
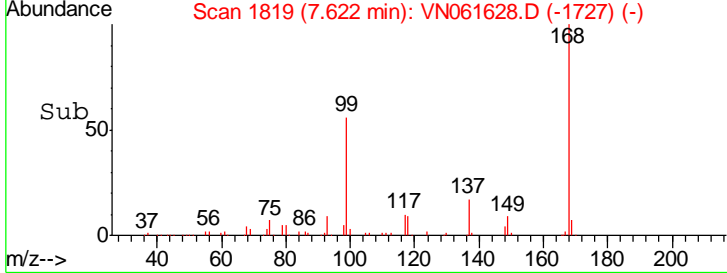
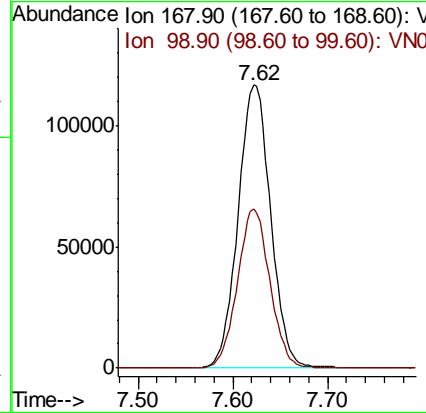
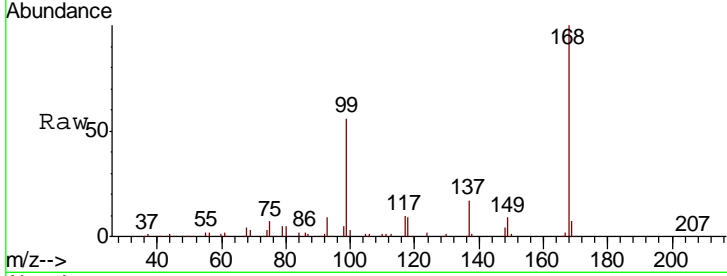




#1
 Pentafluorobenzene
 Concen: 50.000 ug/l
 RT: 7.62 min Scan# 1819
 Delta R.T. -0.00 min
 Lab File: VN061628.D
 Acq: 3 Jun 2020 10:54

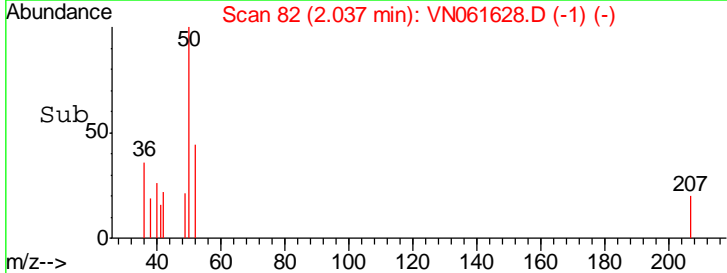
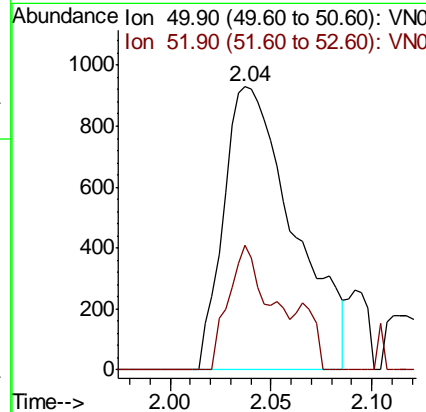
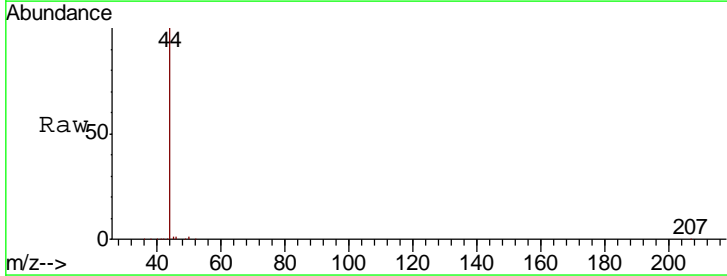
Instrument :
 MSVOA_N
 ClientSampled :
 VN0603WBL01

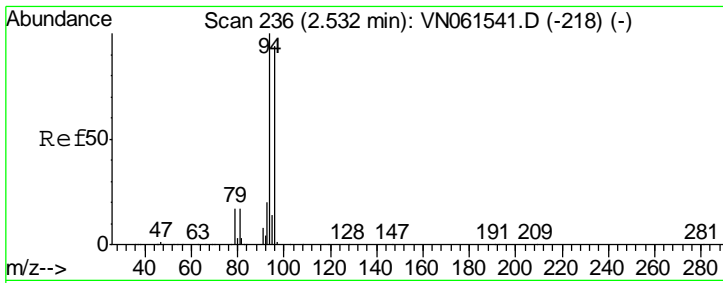
Tgt Ion: 168 Resp: 279849
 Ion Ratio Lower Upper
 168 100
 99 56.3 45.0 67.4



#3
 Chloromethane
 Concen: 0.660 ug/l
 RT: 2.04 min Scan# 82
 Delta R.T. 0.01 min
 Lab File: VN061628.D
 Acq: 3 Jun 2020 10:54

Tgt Ion: 50 Resp: 2252
 Ion Ratio Lower Upper
 50 100
 52 44.0 26.7 40.1#

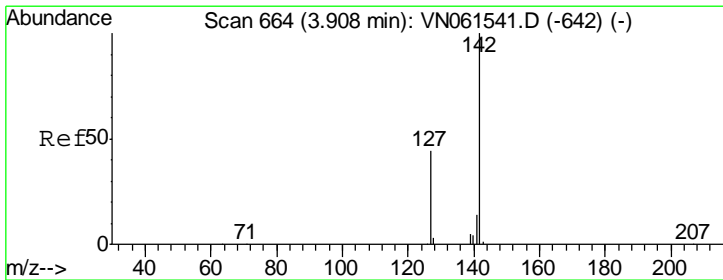
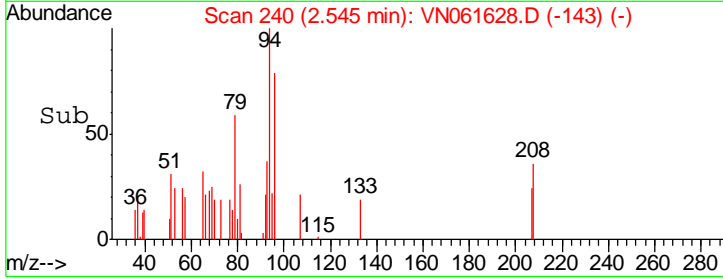
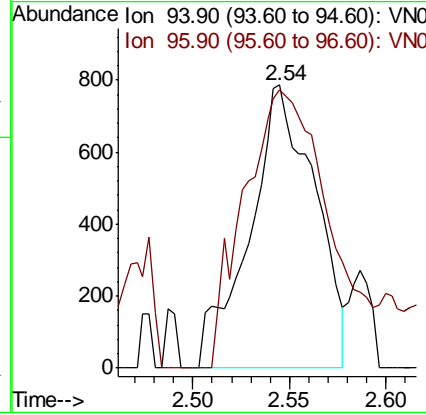
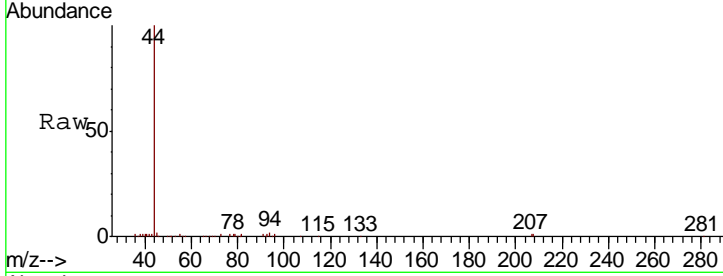




#5
 Bromomethane
 Concen: 0.690 ug/l
 RT: 2.54 min Scan# 240
 Delta R.T. 0.01 min
 Lab File: VN061628.D
 Acq: 3 Jun 2020 10:54

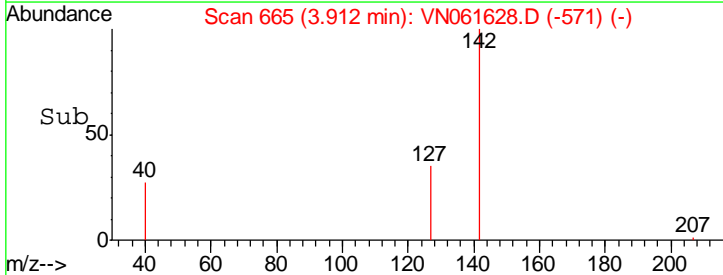
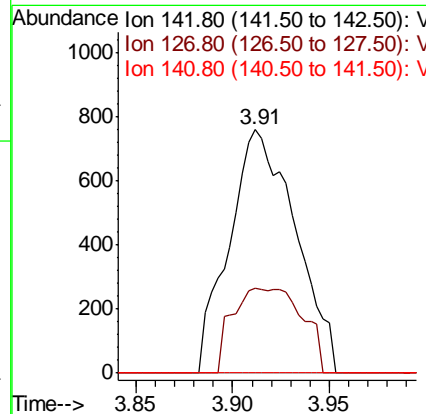
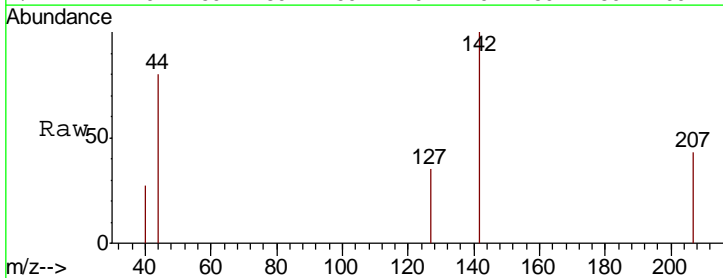
Instrument :
 MSVOA_N
 ClientSampled :
 VN0603WBL01

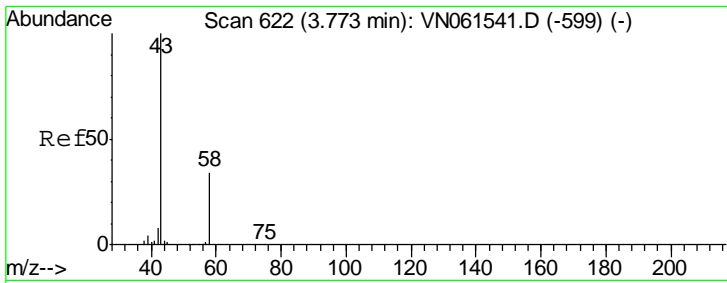
Tgt Ion: 94 Resp: 1852
 Ion Ratio Lower Upper
 94 100
 96 98.5 74.8 112.2



#10
 Methyl Iodide
 Concen: 0.486 ug/l
 RT: 3.91 min Scan# 665
 Delta R.T. 0.00 min
 Lab File: VN061628.D
 Acq: 3 Jun 2020 10:54

Tgt Ion: 142 Resp: 1804
 Ion Ratio Lower Upper
 142 100
 127 19.3 35.5 53.3#
 141 0.0 11.5 17.3#

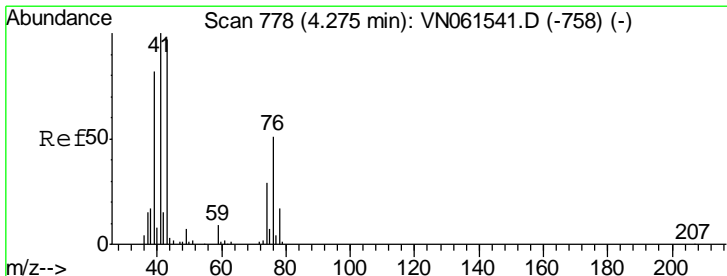
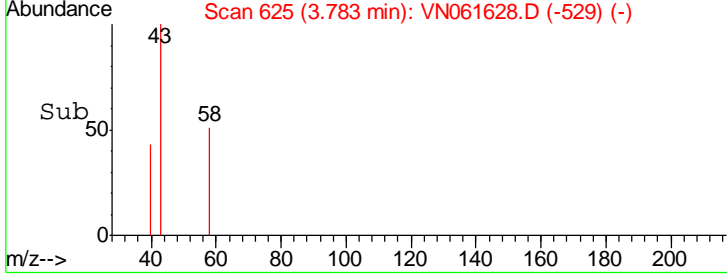
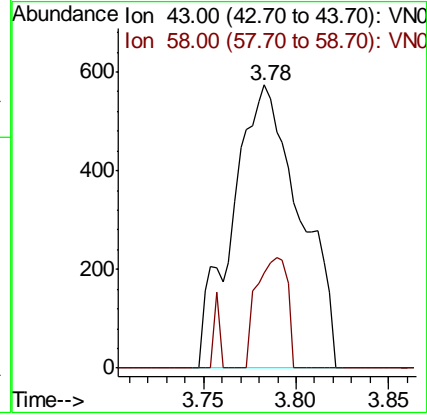
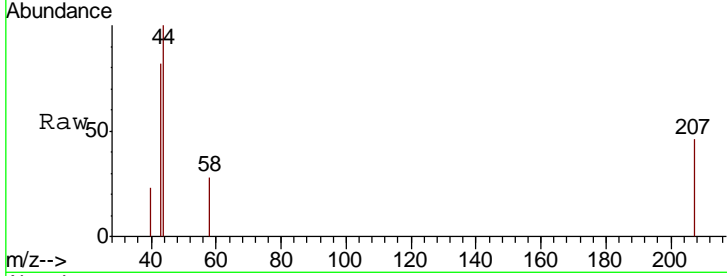




#16
 Acetone
 Concen: Below Cal
 RT: 3.78 min Scan# 625
 Delta R.T. 0.01 min
 Lab File: VN061628.D
 Acq: 3 Jun 2020 10:54

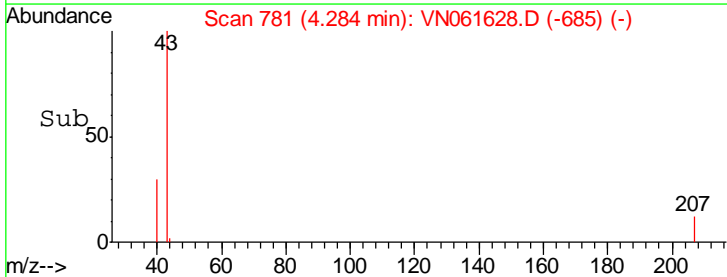
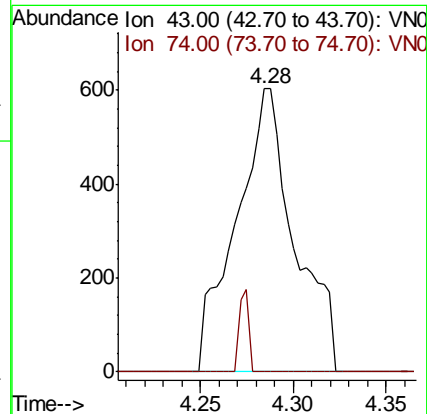
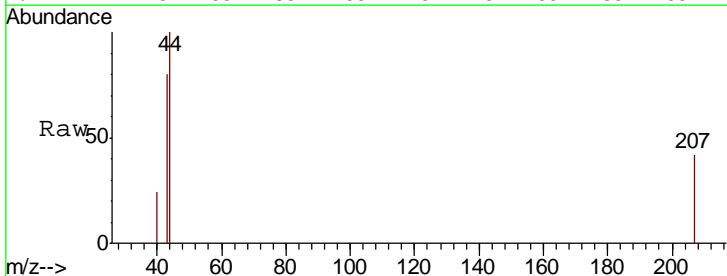
Instrument :
 MSVOA_N
ClientSampled :
 VN0603WBL01

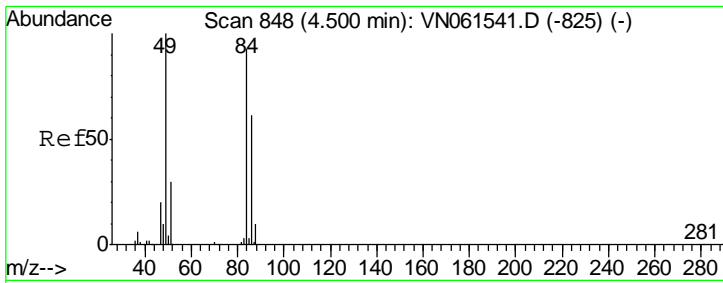
Tgt Ion	Resp	Lower	Upper
43	1457		
58	33.5	27.2	40.8



#18
 Methyl Acetate
 Concen: 0.440 ug/l
 RT: 4.28 min Scan# 781
 Delta R.T. 0.01 min
 Lab File: VN061628.D
 Acq: 3 Jun 2020 10:54

Tgt Ion	Resp	Lower	Upper
43	1328		
74	4.8	23.2	34.8#

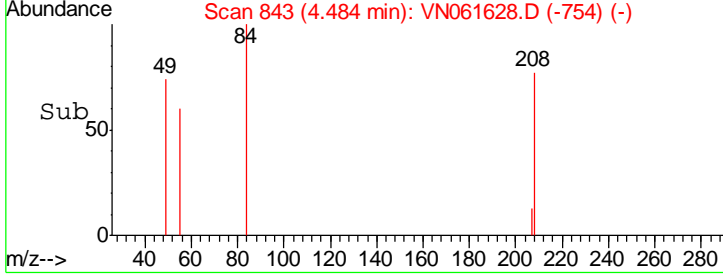
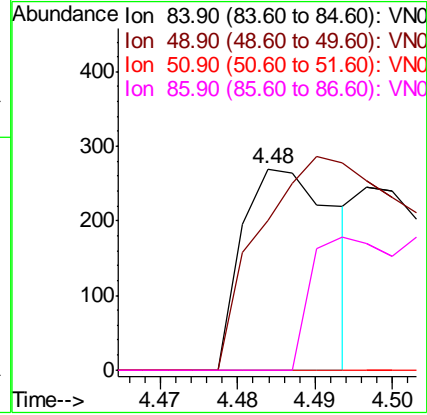
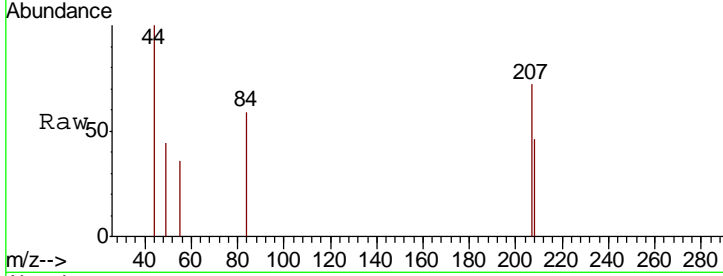




#20
 Methylene Chloride
 Concen: Below Cal
 RT: 4.48 min Scan# 843
 Delta R.T. -0.02 min
 Lab File: VN061628.D
 Acq: 3 Jun 2020 10:54

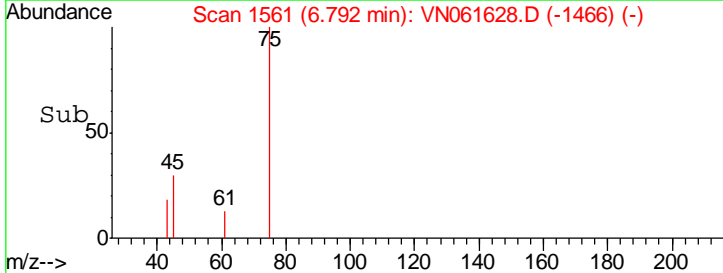
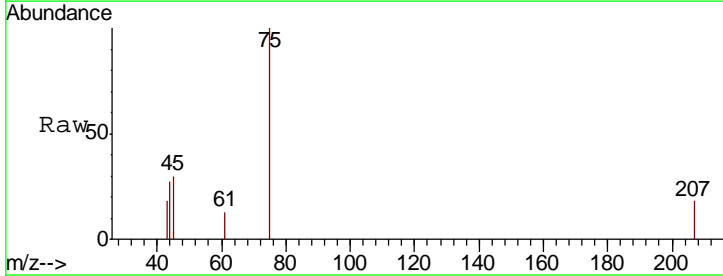
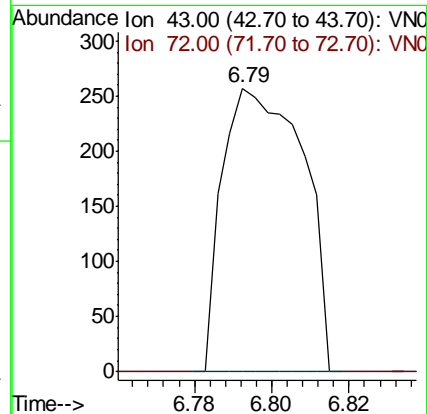
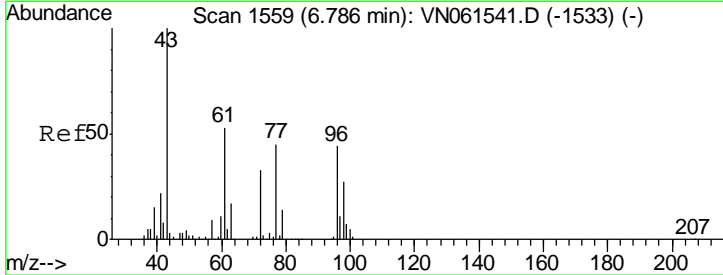
Instrument : MSVOA_N
 ClientSampled : VN0603WBL01

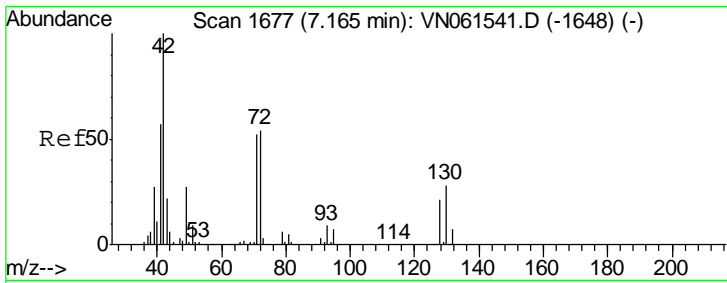
Tgt Ion	Resp	Lower	Upper
84	100		
49	74.1	85.8	128.8#
51	0.0	26.2	39.2#
86	0.0	52.6	78.8#



#25
 2-Butanone
 Concen: 0.236 ug/l
 RT: 6.79 min Scan# 1561
 Delta R.T. 0.01 min
 Lab File: VN061628.D
 Acq: 3 Jun 2020 10:54

Tgt Ion	Resp	Lower	Upper
43	100		
72	0.0	26.0	39.0#

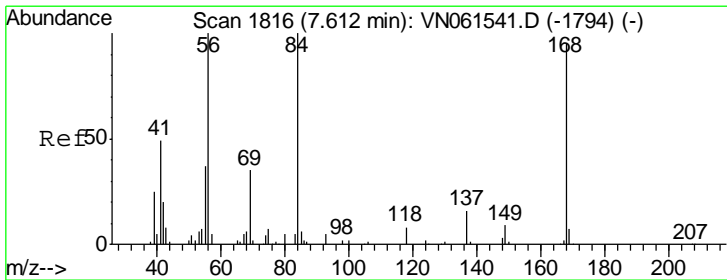
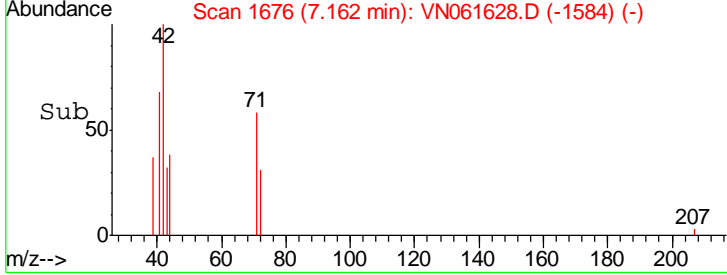
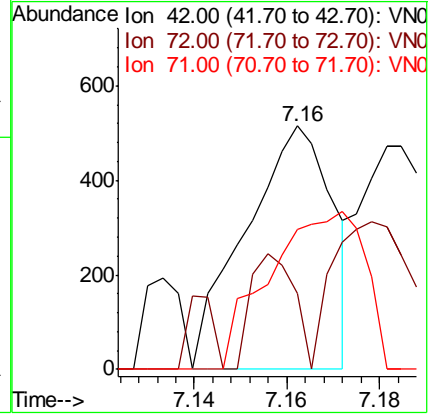
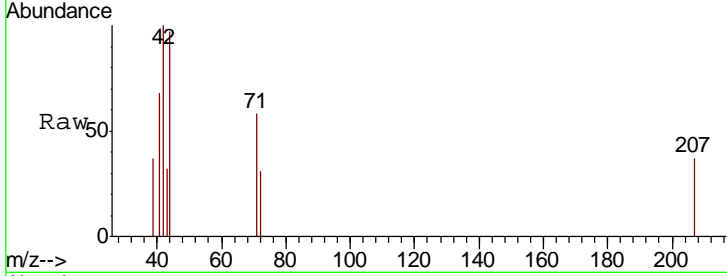




#29
 Tetrahydrofuran
 Concen: 0.646 ug/l
 RT: 7.16 min Scan# 1676
 Delta R.T. -0.00 min
 Lab File: VN061628.D
 Acq: 3 Jun 2020 10:54

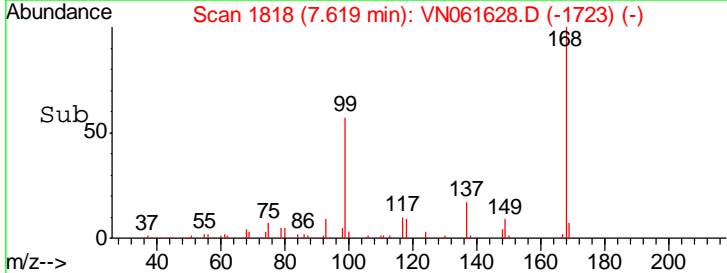
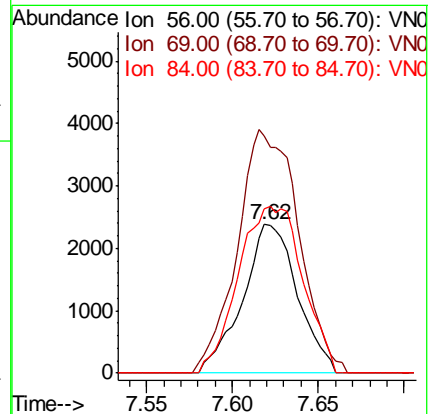
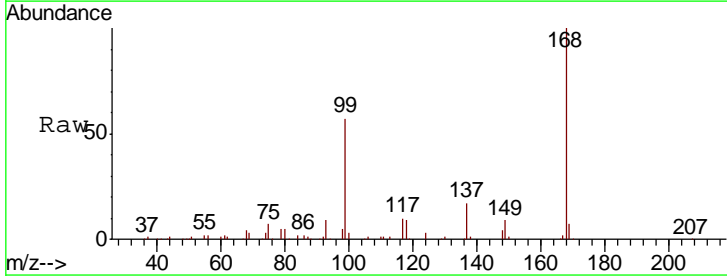
Instrument :
 MSVOA_N
 ClientSampled :
 VN0603WBL01

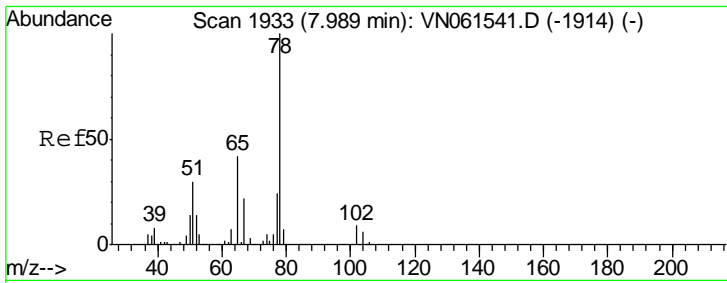
Tgt Ion	Resp	Lower	Upper
42	100		
72	23.8	43.6	65.4#
71	0.0	41.2	61.8#



#31
 Cyclohexane
 Concen: 1.124 ug/l
 RT: 7.62 min Scan# 1818
 Delta R.T. 0.01 min
 Lab File: VN061628.D
 Acq: 3 Jun 2020 10:54

Tgt Ion	Resp	Lower	Upper
56	100		
69	159.8	27.8	41.8#
84	110.1	79.9	119.9

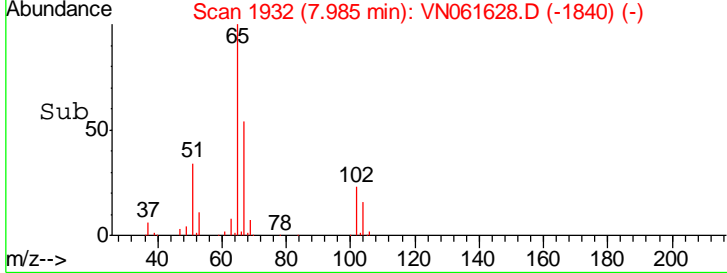
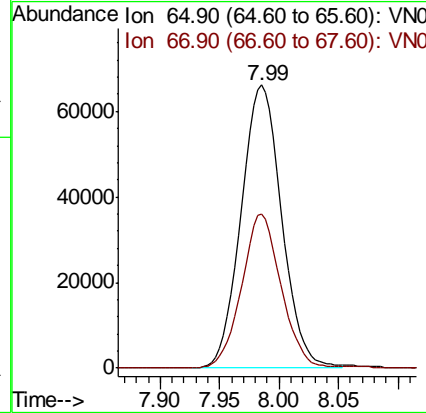
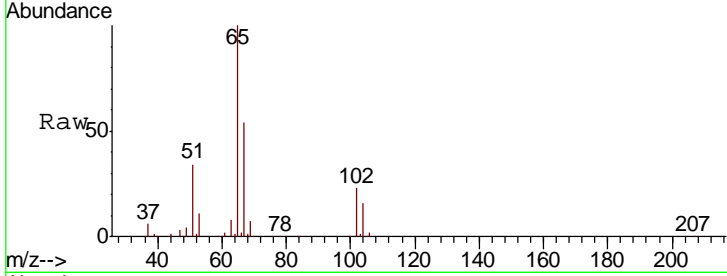




#33
 1,2-Dichloroethane-d4
 Concen: 46.936 ug/l
 RT: 7.99 min Scan# 1932
 Delta R.T. -0.00 min
 Lab File: VN061628.D
 Acq: 3 Jun 2020 10:54

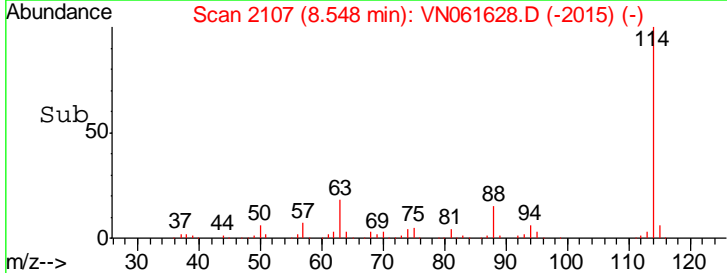
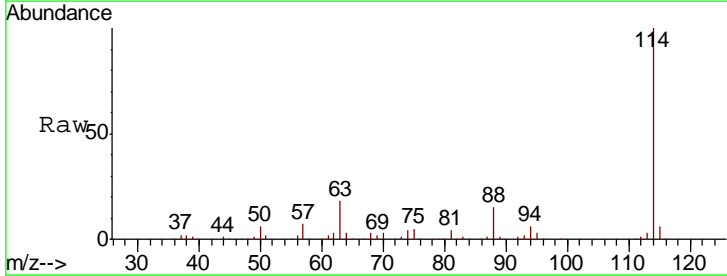
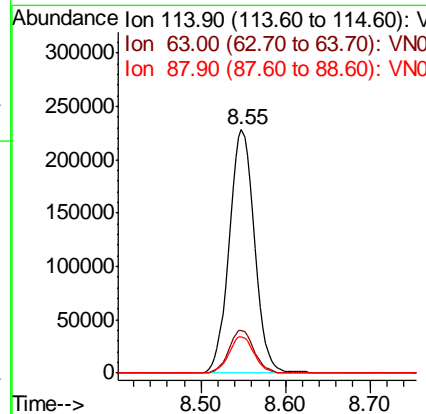
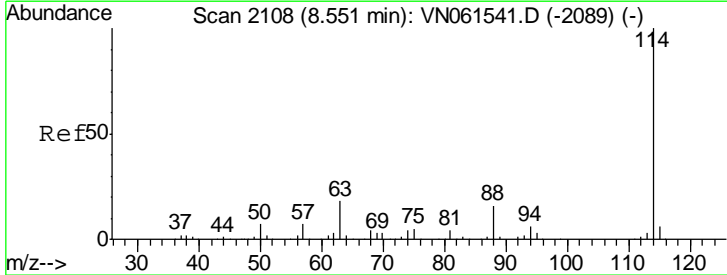
Instrument : MSVOA_N
 ClientSampled : VN0603WBL01

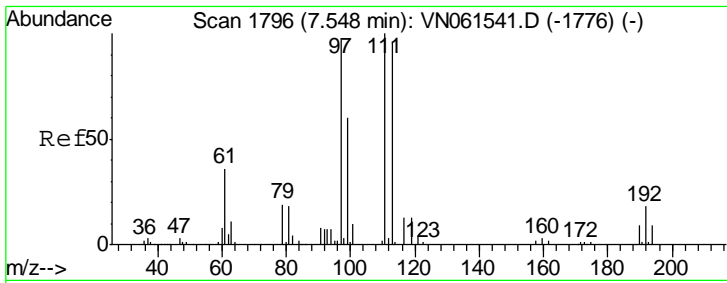
Tgt Ion	Resp	Lower	Upper
65	156494		
67	52.7	0.0	104.8



#34
 1,4-Difluorobenzene
 Concen: 50.000 ug/l
 RT: 8.55 min Scan# 2107
 Delta R.T. -0.00 min
 Lab File: VN061628.D
 Acq: 3 Jun 2020 10:54

Tgt Ion	Resp	Lower	Upper
114	476101		
63	17.6	0.0	35.8
88	14.9	0.0	31.0

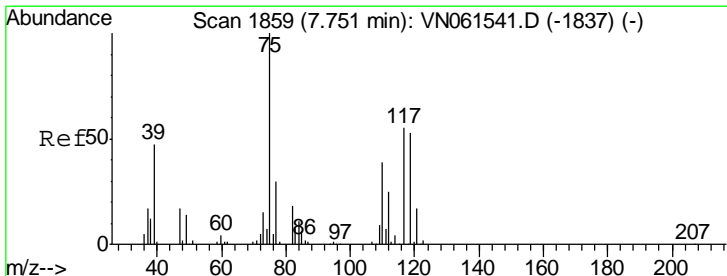
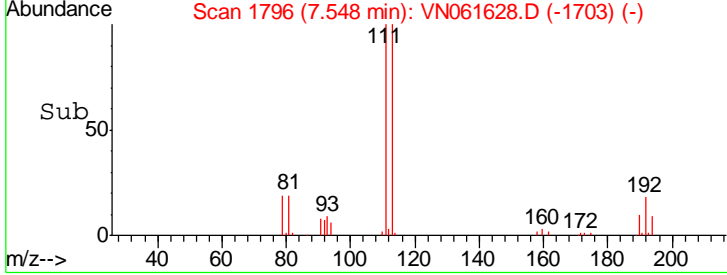
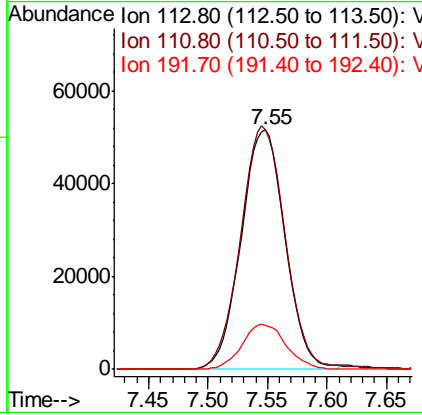
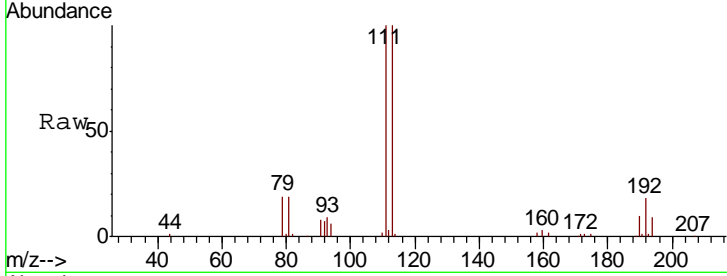




#35
 Dibromofluoromethane
 Concen: 54.608 ug/l
 RT: 7.55 min Scan# 1796
 Delta R.T. 0.00 min
 Lab File: VN061628.D
 Acq: 3 Jun 2020 10:54

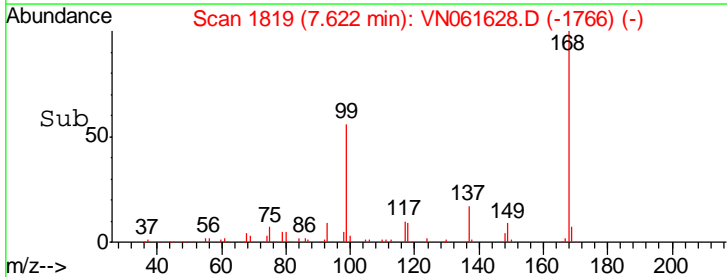
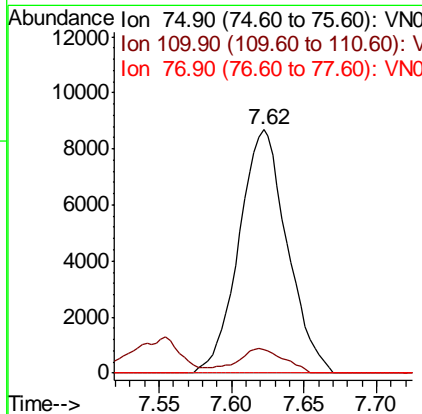
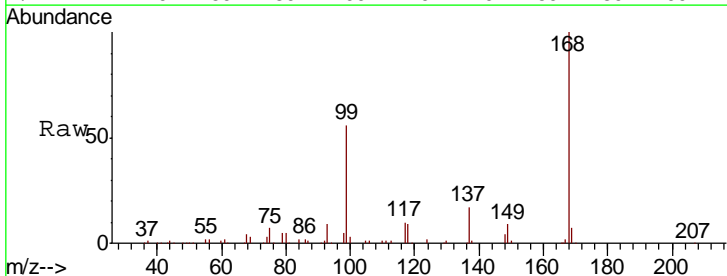
Instrument : MSVOA_N
 ClientSampled : VN0603WBL01

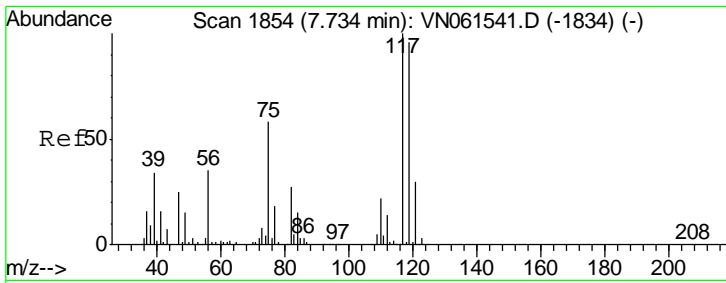
Tgt Ion	Resp	Lower	Upper
113	100		
111	102.8	83.4	125.0
192	19.0	15.4	23.2



#36
 1,1-Dichloropropene
 Concen: 4.763 ug/l
 RT: 7.62 min Scan# 1819
 Delta R.T. -0.13 min
 Lab File: VN061628.D
 Acq: 3 Jun 2020 10:54

Tgt Ion	Resp	Lower	Upper
75	100		
110	9.5	19.5	58.5#
77	0.0	24.7	37.1#

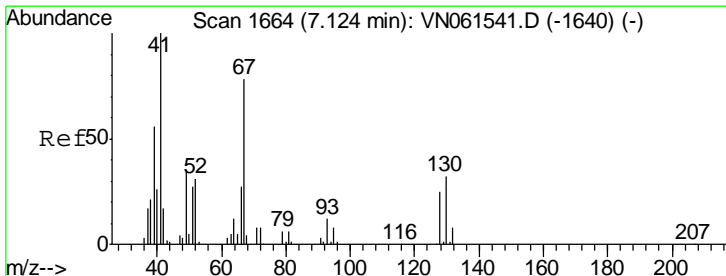
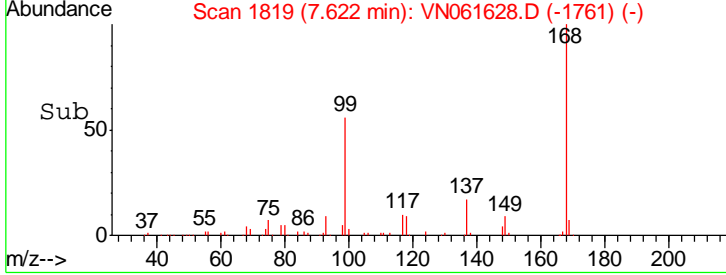
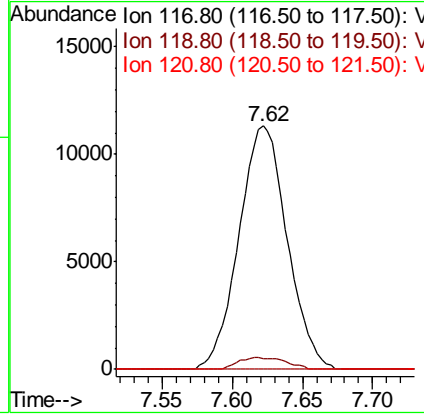
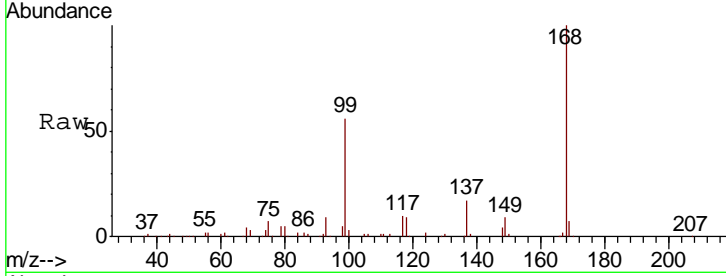




#38
 Carbon Tetrachloride
 Concen: 6.651 ug/l
 RT: 7.62 min Scan# 1819
 Delta R.T. -0.11 min
 Lab File: VN061628.D
 Acq: 3 Jun 2020 10:54

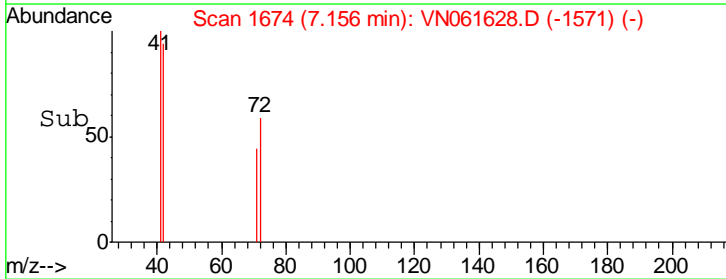
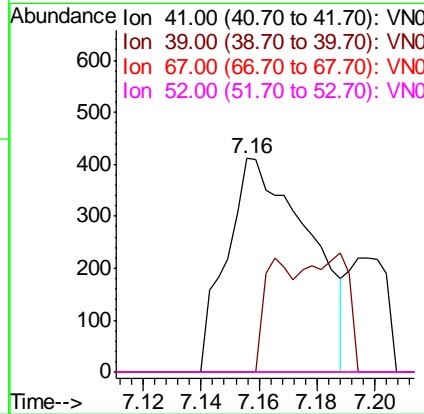
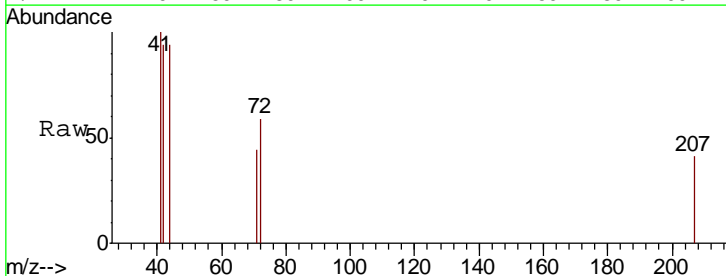
Instrument : MSVOA_N
 ClientSampled : VN0603WBL01

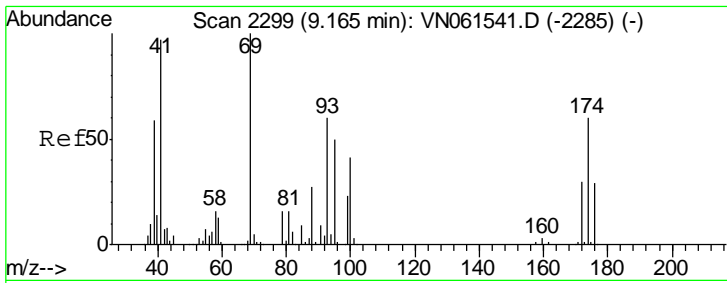
Tgt Ion	Resp	Lower	Upper
117	100		
119	4.2	76.5	114.7#
121	0.0	24.1	36.1#



#41
 Methacrylonitrile
 Concen: 0.520 ug/l
 RT: 7.16 min Scan# 1674
 Delta R.T. 0.03 min
 Lab File: VN061628.D
 Acq: 3 Jun 2020 10:54

Tgt Ion	Resp	Lower	Upper
41	100		
39	18.8	53.8	80.6#
67	0.0	91.1	136.7#
52	0.0	36.0	54.0#

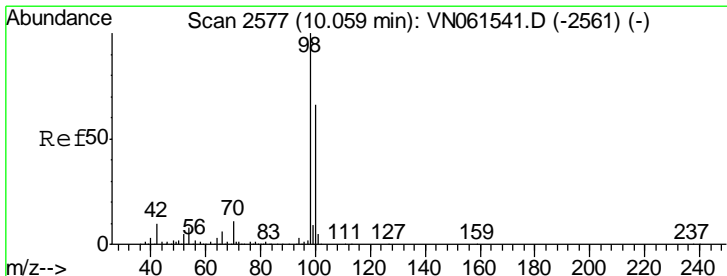
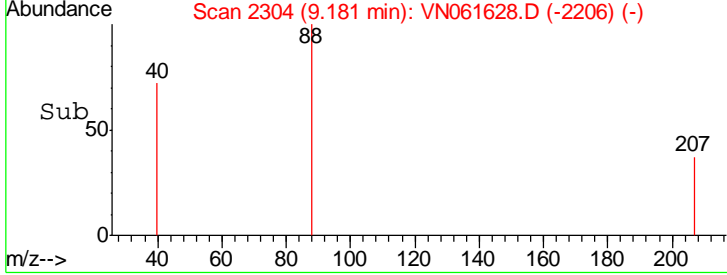
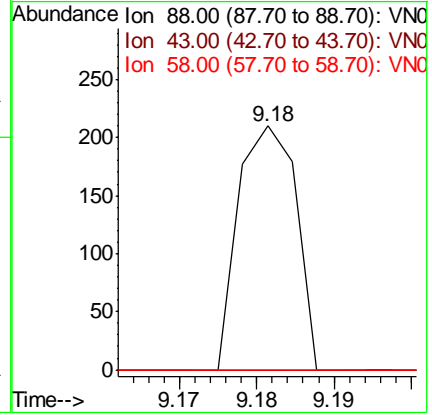
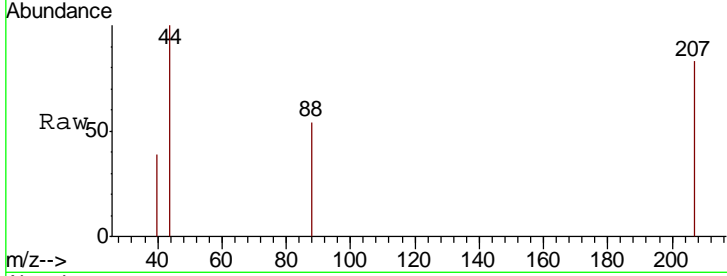




#49
 1,4-Dioxane
 Concen: 2.561 ug/l
 RT: 9.18 min Scan# 2304
 Delta R.T. 0.02 min
 Lab File: VN061628.D
 Acq: 3 Jun 2020 10:54

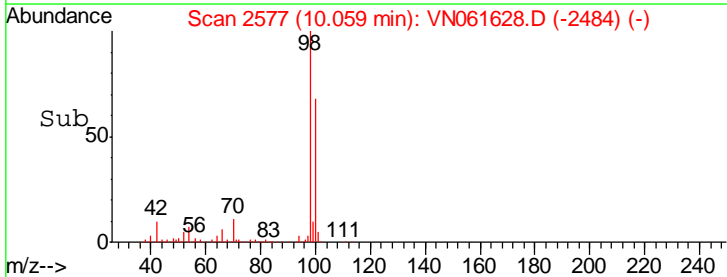
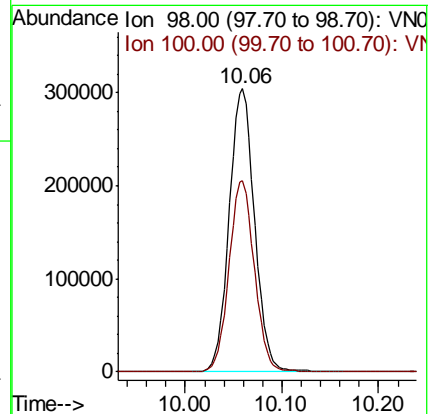
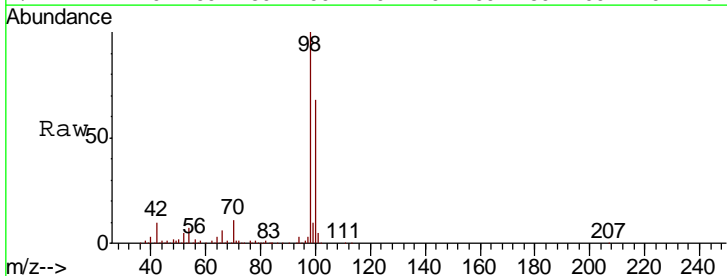
Instrument :
 MSVOA_N
 ClientSampled :
 VN0603WBL01

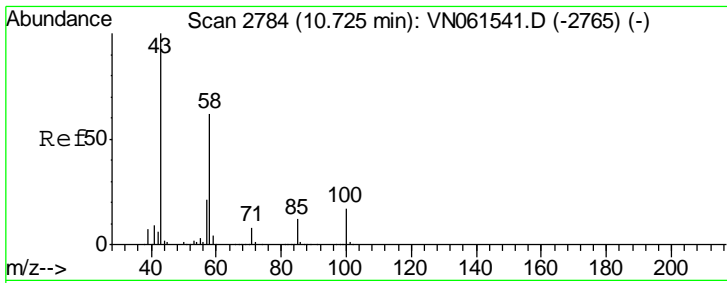
Tgt Ion	Resp	Lower	Upper
88	109		
88	100		
43	0.0	23.1	34.7#
58	0.0	48.3	72.5#



#50
 Toluene-d8
 Concen: 49.571 ug/l
 RT: 10.06 min Scan# 2577
 Delta R.T. 0.00 min
 Lab File: VN061628.D
 Acq: 3 Jun 2020 10:54

Tgt Ion	Resp	Lower	Upper
98	554814		
98	100		
100	67.6	52.8	79.2

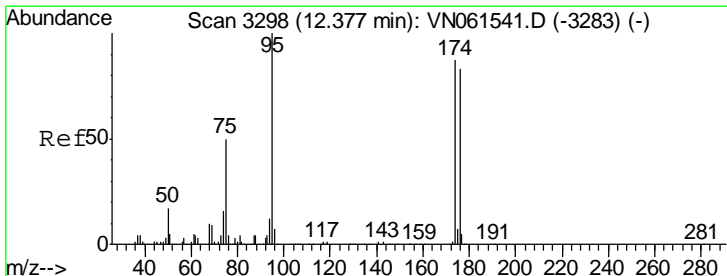
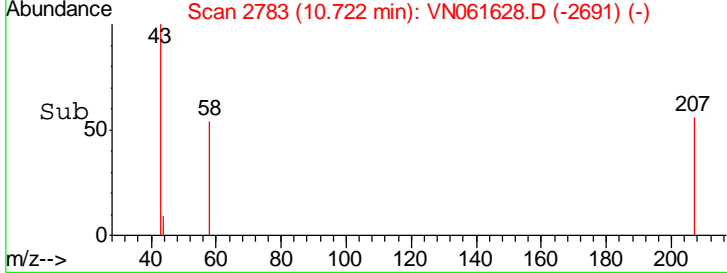
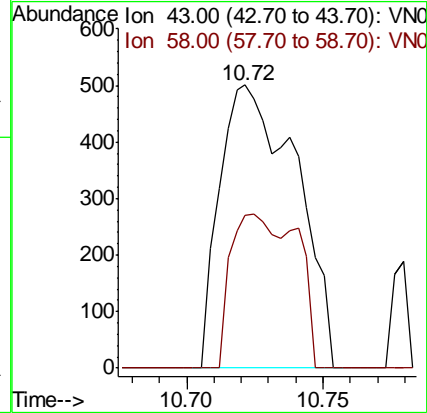
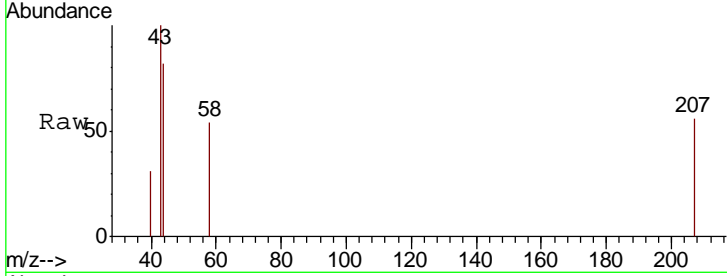




#59
 2-Hexanone
 Concen: 0.394 ug/l
 RT: 10.72 min Scan# 2783
 Delta R.T. -0.00 min
 Lab File: VN061628.D
 Acq: 3 Jun 2020 10:54

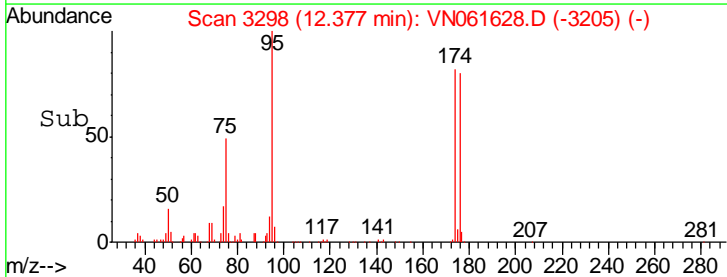
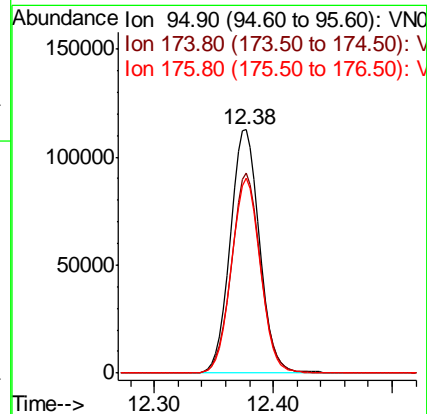
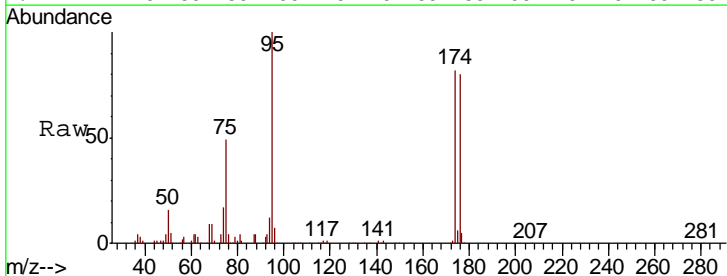
Instrument :
 MSVOA_N
 ClientSampled :
 VN0603WBL01

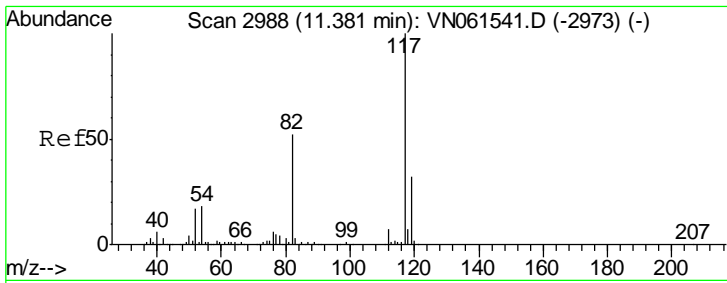
Tgt Ion	Resp	Lower	Upper
43	100		
58	33.7	30.7	92.1



#62
 4-Bromofluorobenzene
 Concen: 46.962 ug/l
 RT: 12.38 min Scan# 3298
 Delta R.T. 0.00 min
 Lab File: VN061628.D
 Acq: 3 Jun 2020 10:54

Tgt Ion	Resp	Lower	Upper
95	100		
174	81.8	0.0	172.8
176	79.3	0.0	164.8

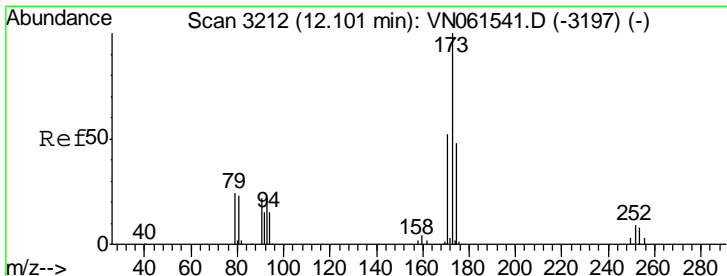
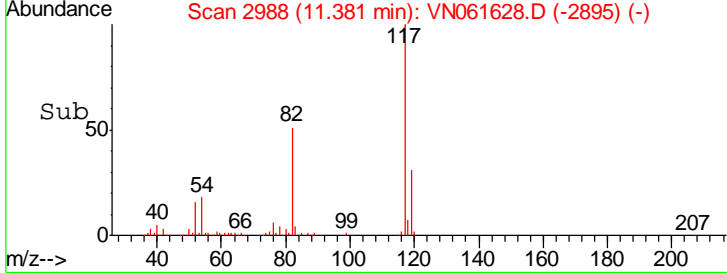
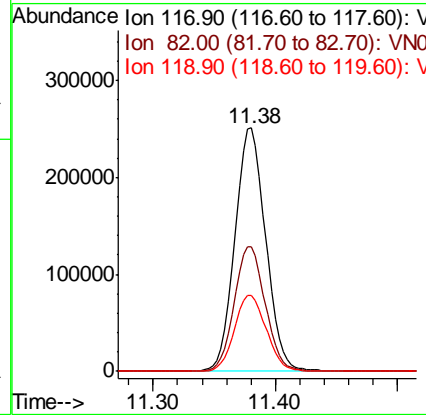
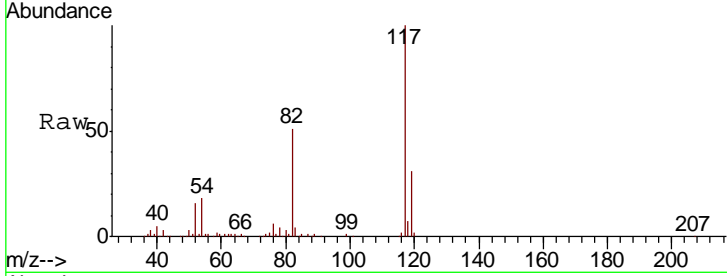




#63
 Chlorobenzene-d5
 Concen: 50.000 ug/l
 RT: 11.38 min Scan# 2988
 Delta R.T. 0.00 min
 Lab File: VN061628.D
 Acq: 3 Jun 2020 10:54

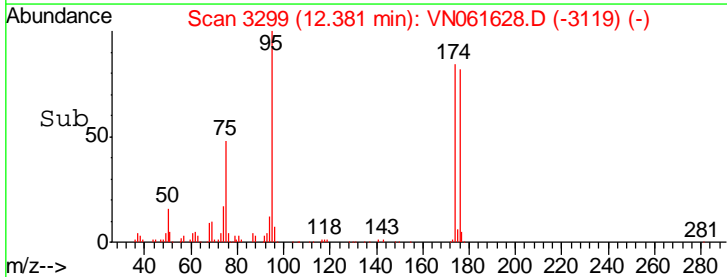
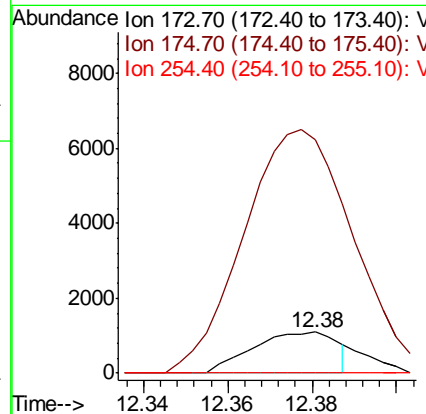
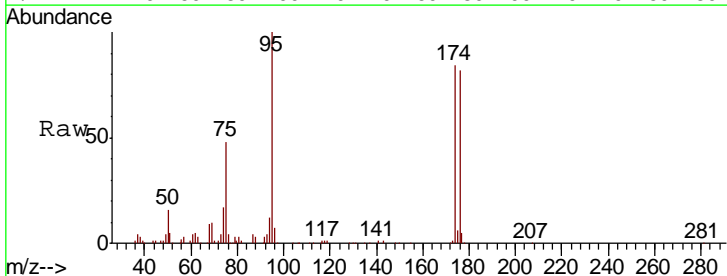
Instrument :
 MSVOA_N
 ClientSampled :
 VN0603WBL01

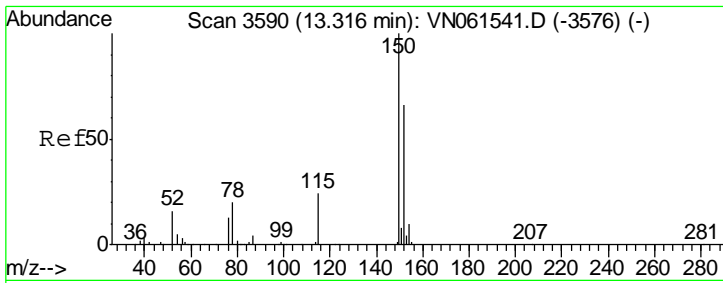
Tgt Ion	Resp	Lower	Upper
117	441439		
82	51.4	41.5	62.3
119	31.2	25.6	38.4



#71
 Bromoform
 Concen: 0.580 ug/l
 RT: 12.38 min Scan# 3299
 Delta R.T. 0.28 min
 Lab File: VN061628.D
 Acq: 3 Jun 2020 10:54

Tgt Ion	Resp	Lower	Upper
173	1528		
175	641.9	24.4	73.2#
254	0.0	0.0	0.0

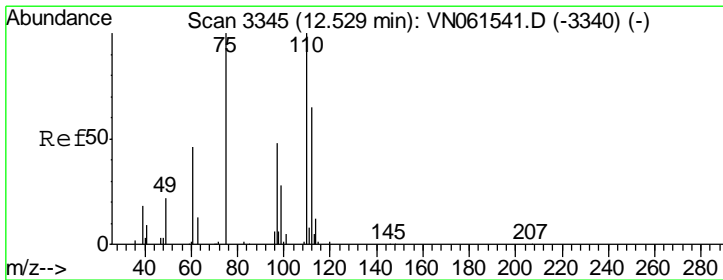
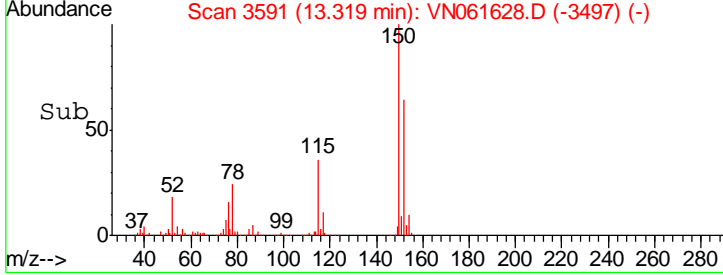
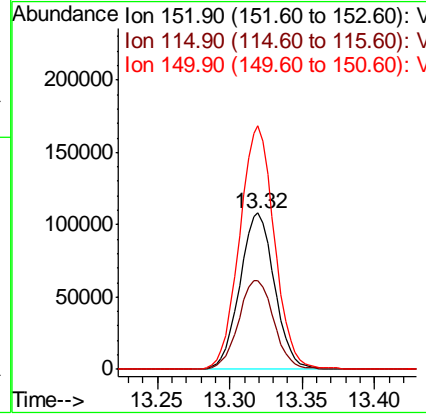
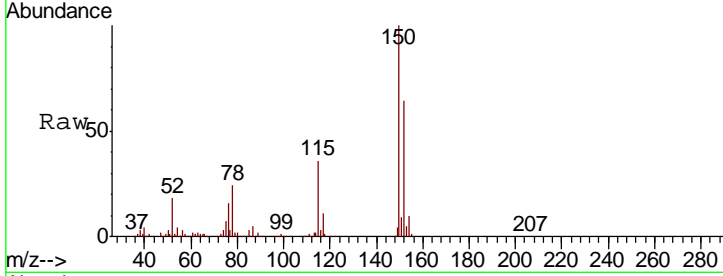




#72
 1,4-Dichlorobenzene-d4
 Concen: 50.000 ug/l
 RT: 13.32 min Scan# 3591
 Delta R.T. 0.00 min
 Lab File: VN061628.D
 Acq: 3 Jun 2020 10:54

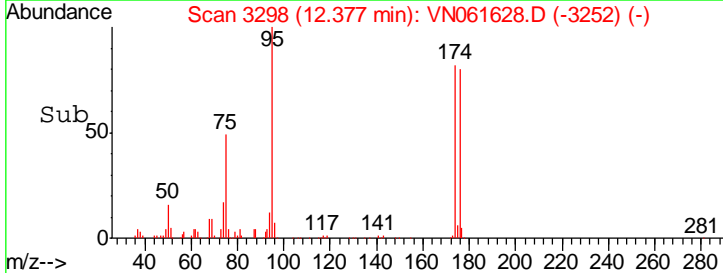
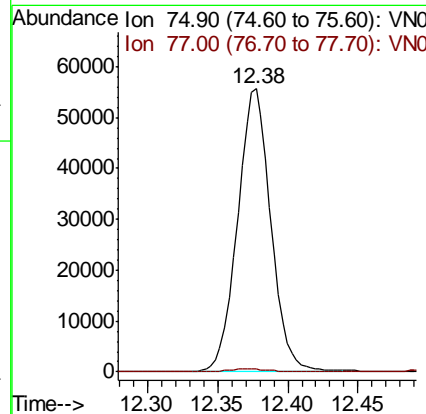
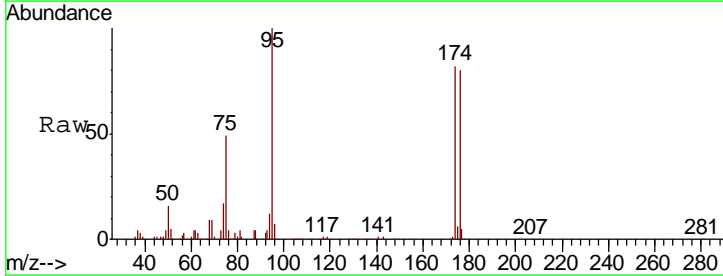
Instrument : MSVOA_N
 ClientSampled : VN0603WBL01

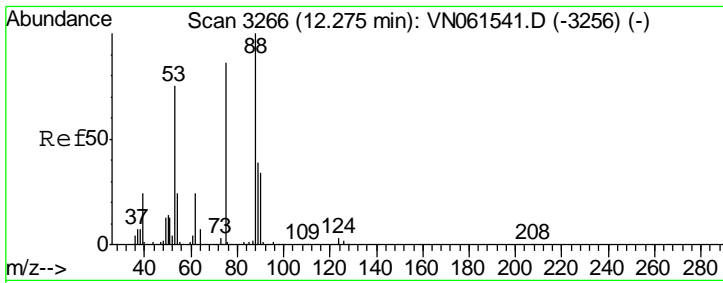
Tgt Ion	Resp	Lower	Upper
152	100		
115	58.2	28.0	84.0
150	157.3	0.0	344.0



#76
 1,2,3-Trichloropropane
 Concen: 28.189 ug/l
 RT: 12.38 min Scan# 3298
 Delta R.T. -0.15 min
 Lab File: VN061628.D
 Acq: 3 Jun 2020 10:54

Tgt Ion	Resp	Lower	Upper
75	100		
77	1.1	0.0	0.0#

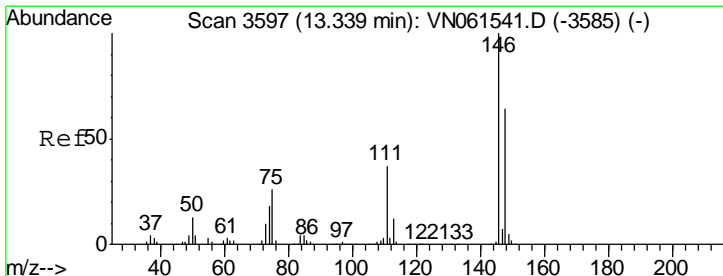
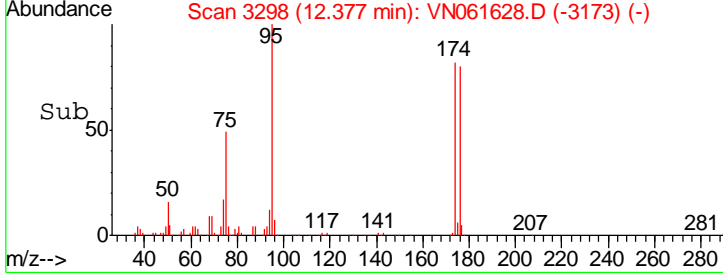
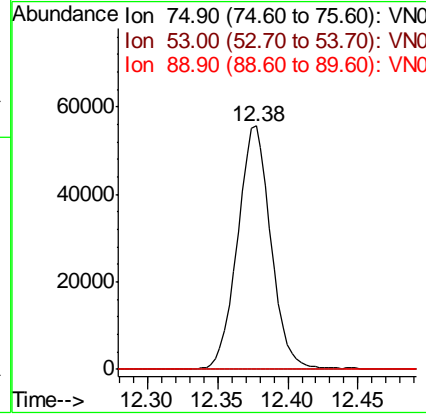
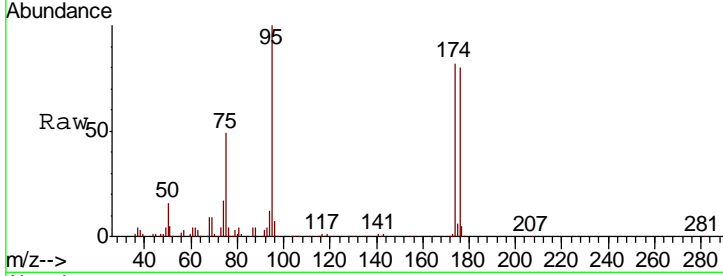




#81
 trans-1,4-Dichloro-2-butene
 Concen: 72.088 ug/l
 RT: 12.38 min Scan# 3298
 Delta R.T. 0.10 min
 Lab File: VN061628.D
 Acq: 3 Jun 2020 10:54

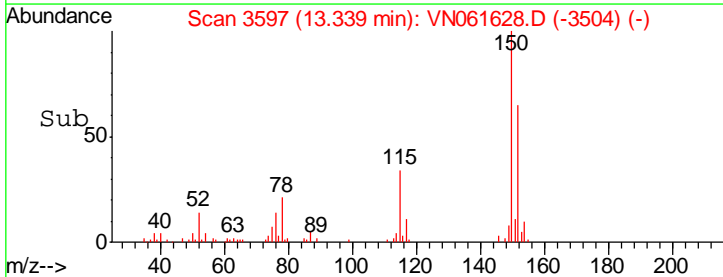
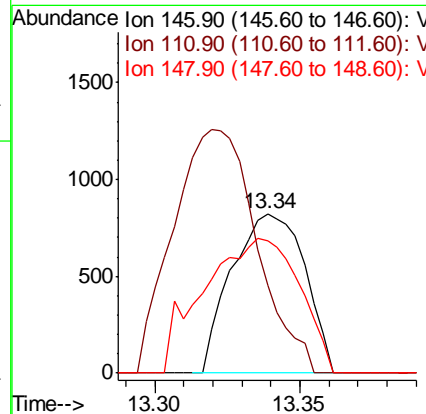
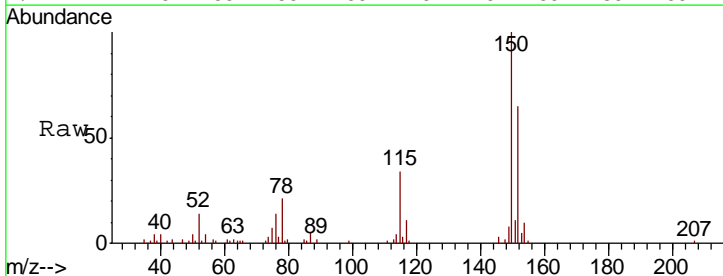
Instrument : MSVOA_N
 ClientSampled : VN0603WBL01

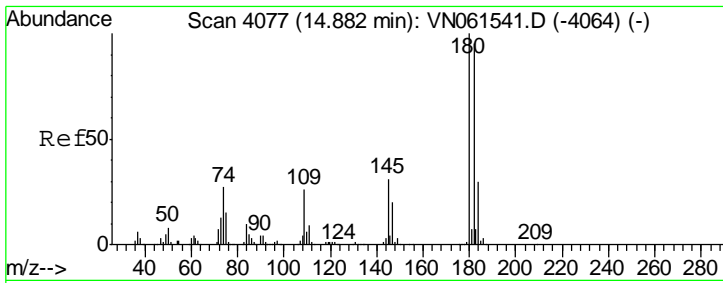
Tgt Ion	Resp	Lower	Upper
75	100		
53	0.0	67.8	101.8#
89	0.0	37.1	55.7#



#88
 1,4-Dichlorobenzene
 Concen: 0.238 ug/l
 RT: 13.34 min Scan# 3597
 Delta R.T. 0.00 min
 Lab File: VN061628.D
 Acq: 3 Jun 2020 10:54

Tgt Ion	Resp	Lower	Upper
146	100		
111	174.7	18.9	56.9#
148	111.2	31.8	95.3#

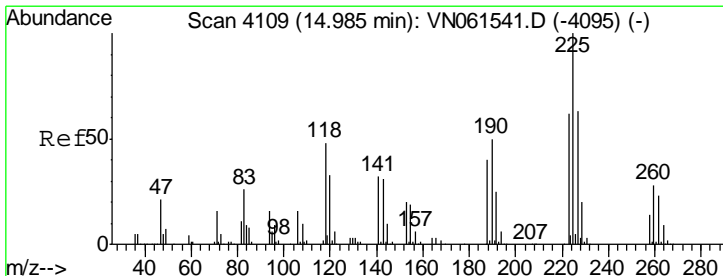
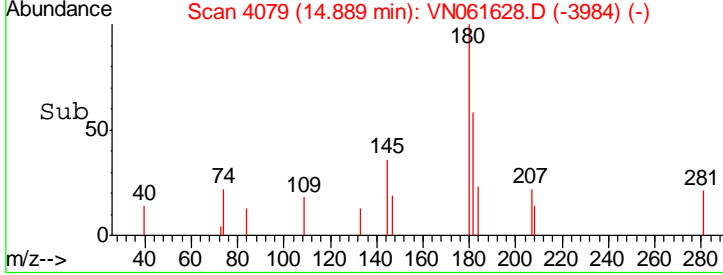
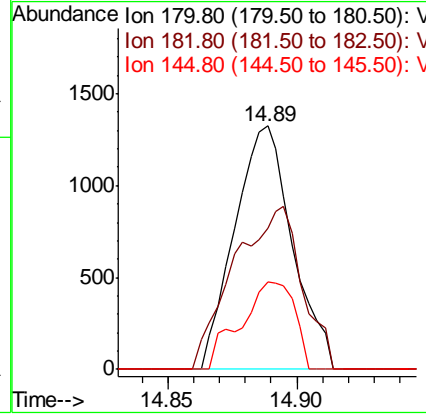
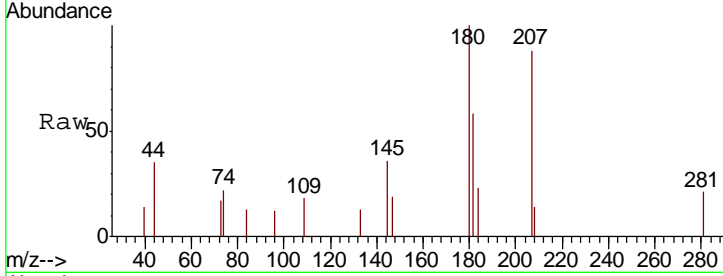




#93
 1,2,4-Trichlorobenzene
 Concen: 0.626 ug/l
 RT: 14.89 min Scan# 4079
 Delta R.T. 0.01 min
 Lab File: VN061628.D
 Acq: 3 Jun 2020 10:54

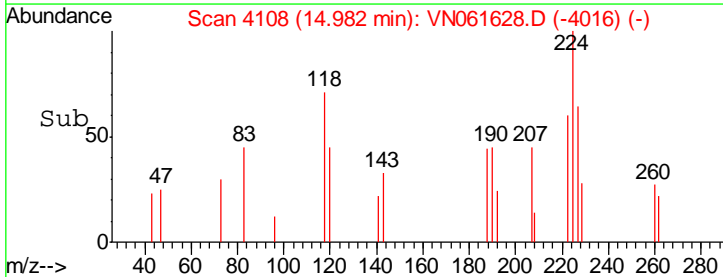
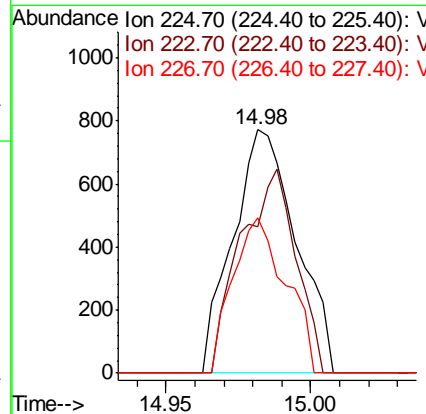
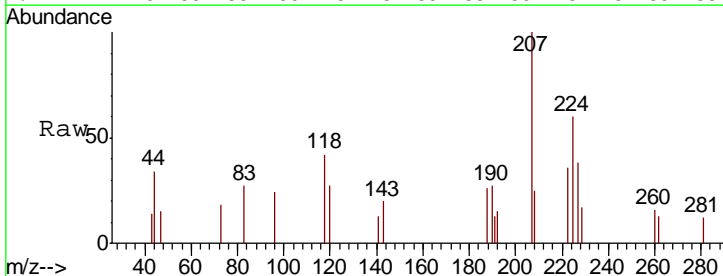
Instrument : MSVOA_N
 ClientSampled : VN0603WBL01

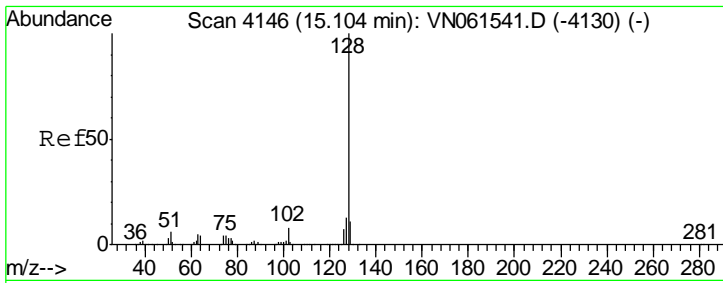
Tgt Ion	Resp	Lower	Upper
180	2070		
182	78.6	47.8	143.3
145	33.5	15.5	46.5



#94
 Hexachlorobutadiene
 Concen: 0.831 ug/l
 RT: 14.98 min Scan# 4108
 Delta R.T. -0.00 min
 Lab File: VN061628.D
 Acq: 3 Jun 2020 10:54

Tgt Ion	Resp	Lower	Upper
225	1172		
223	73.0	31.9	95.5
227	53.4	31.9	95.9

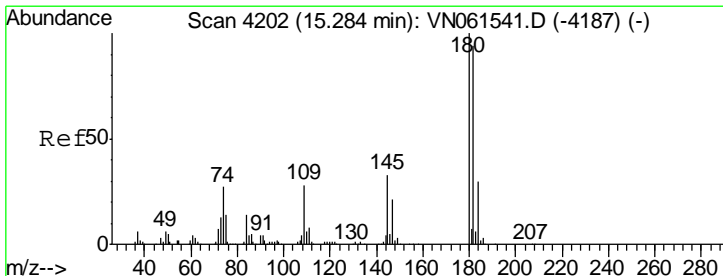
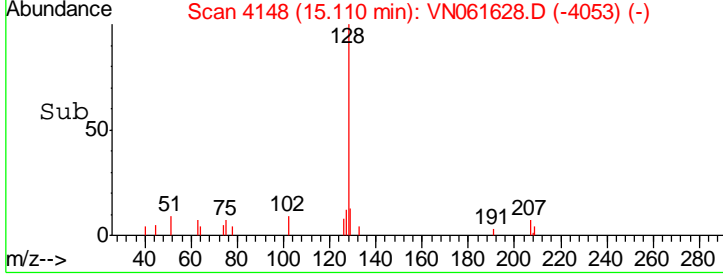
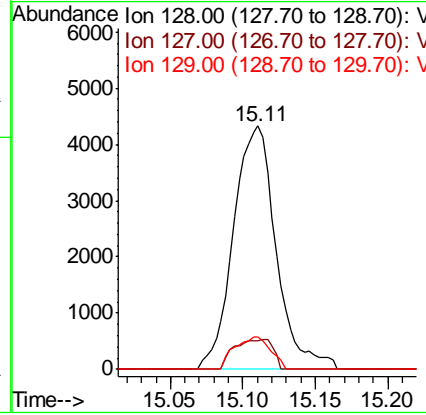
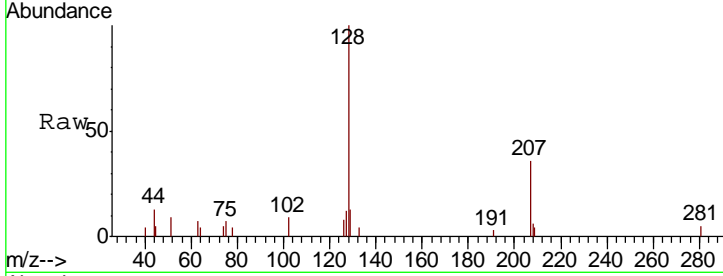




#95
 Naphthalene
 Concen: 0.879 ug/l
 RT: 15.11 min Scan# 4148
 Delta R.T. 0.01 min
 Lab File: VN061628.D
 Acq: 3 Jun 2020 10:54

Instrument : MSVOA_N
 ClientSampled : VN0603WBL01

Tgt Ion	Resp	Lower	Upper
128	100		
127	11.0	10.0	15.0
129	11.2	8.5	12.7



#96
 1,2,3-Trichlorobenzene
 Concen: 0.662 ug/l
 RT: 15.29 min Scan# 4204
 Delta R.T. 0.01 min
 Lab File: VN061628.D
 Acq: 3 Jun 2020 10:54

Tgt Ion	Resp	Lower	Upper
180	100		
182	100.6	47.1	141.3
145	18.5	16.3	48.9

